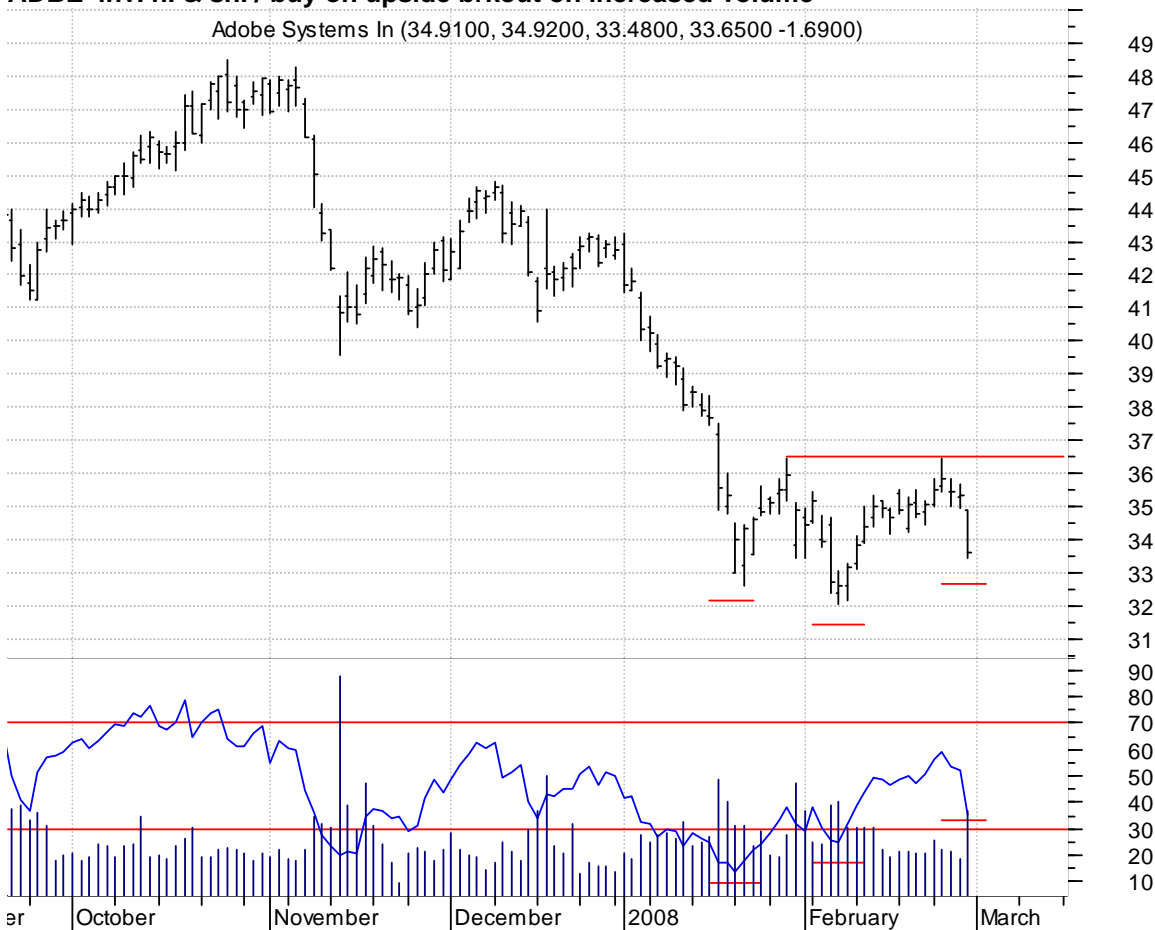


ADBE inv. h. & sh. / buy on upside brkout on increased volume

Adobe Systems In (34.9100, 34.9200, 33.4800, 33.6500 -1.6900)



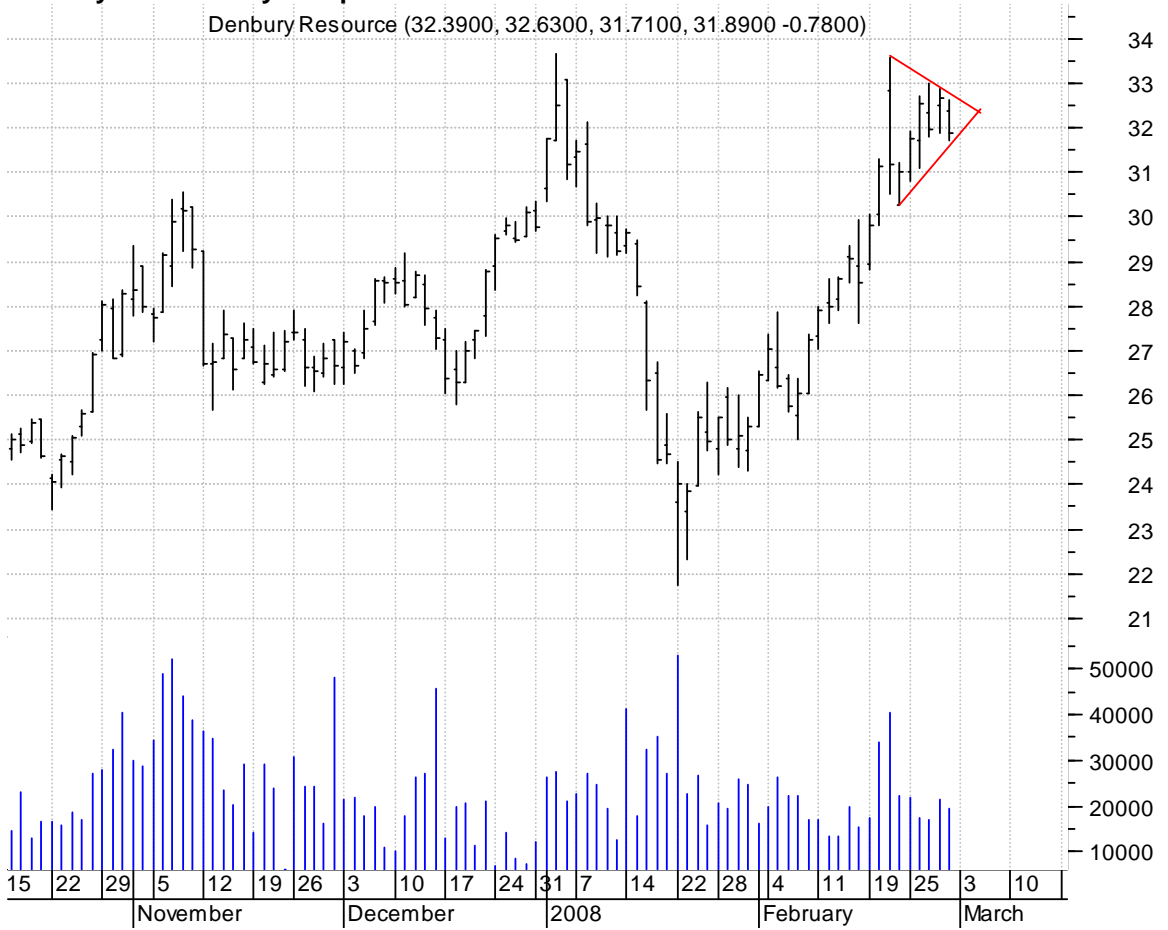
DISH symm. tri. / buy on upside brkout on increased volume

Echostar Communi (30.2300, 30.2500, 29.4900, 29.6500 -0.8900)



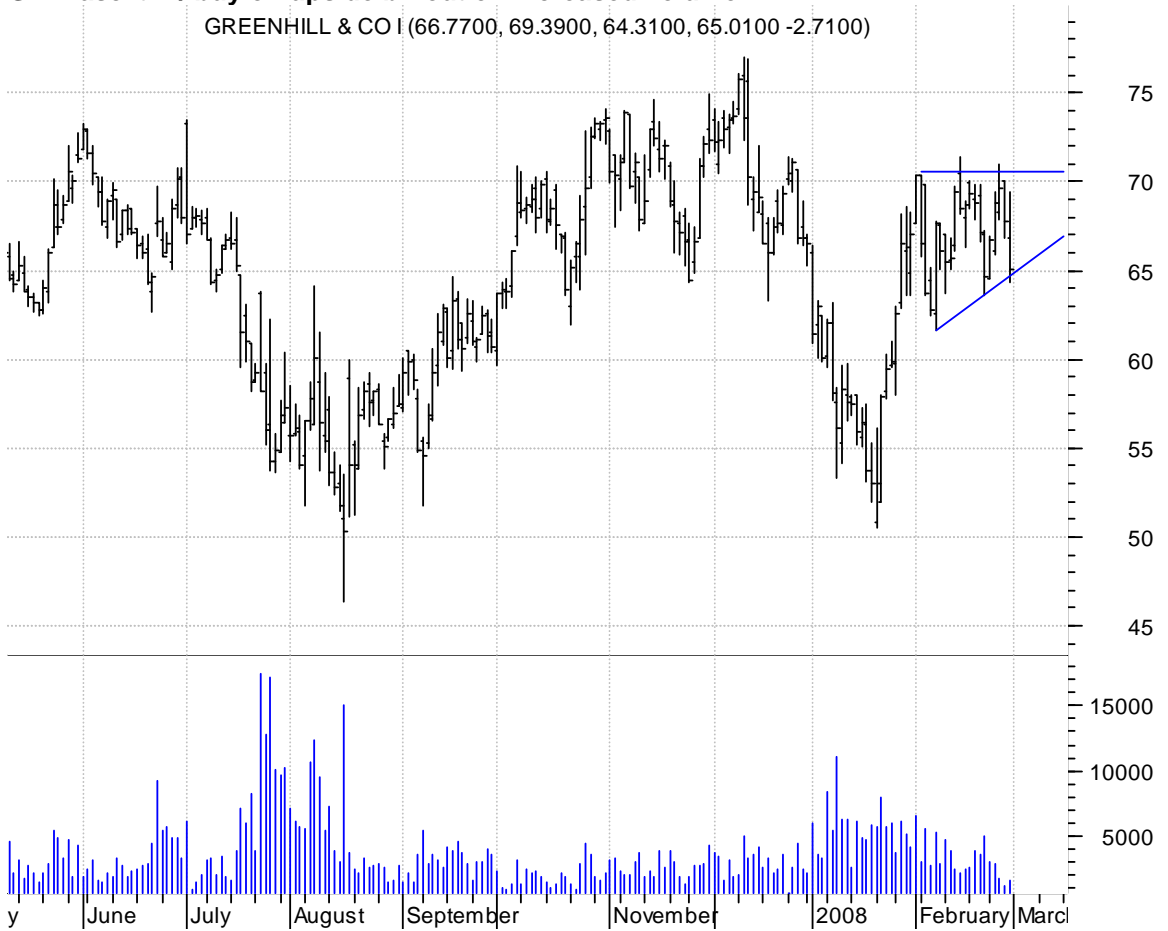
DNR symm. tri. / buy on upside breakout on increased volume

Denbury Resource (32.3900, 32.6300, 31.7100, 31.8900 -0.7800)



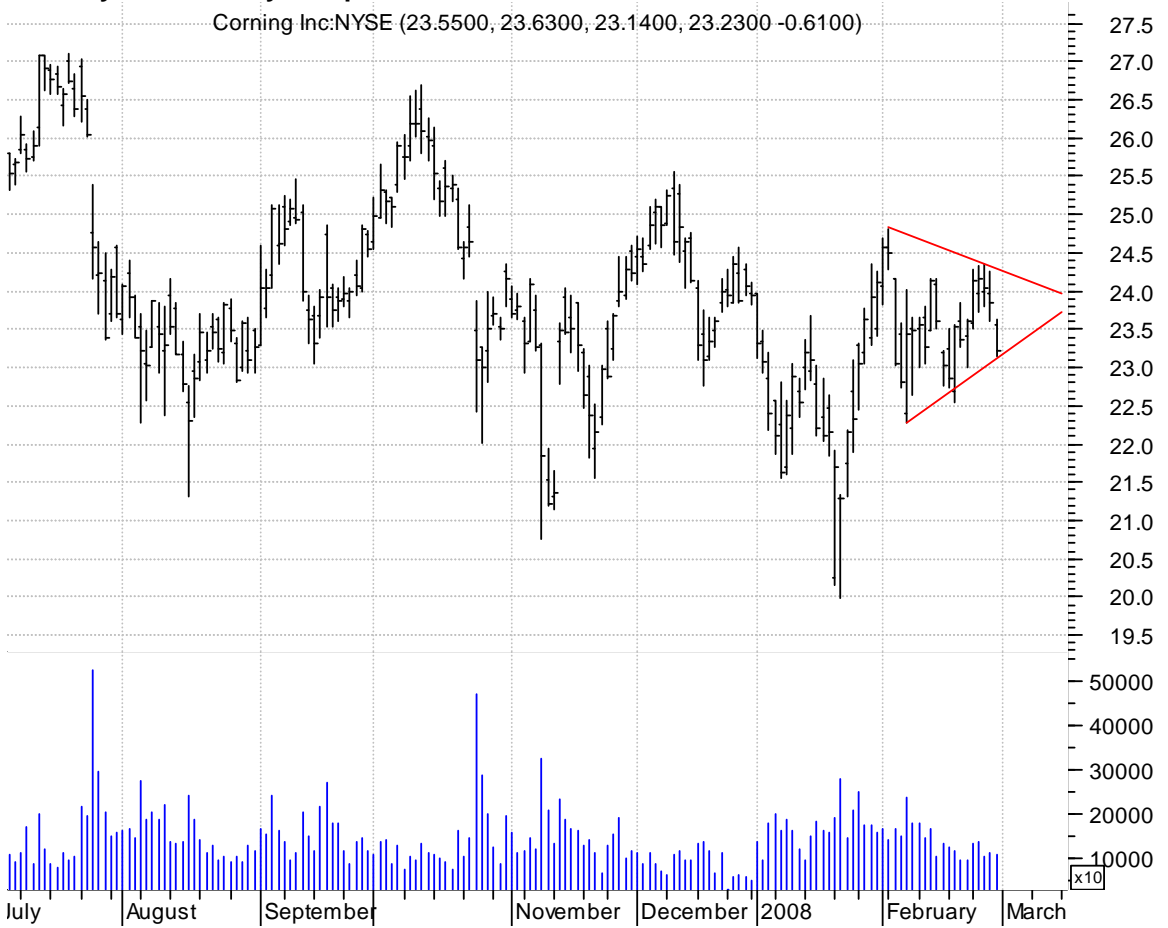
GHL asc. tri. / buy on upside breakout on increased volume

GREENHILL & CO I (66.7700, 69.3900, 64.3100, 65.0100 -2.7100)



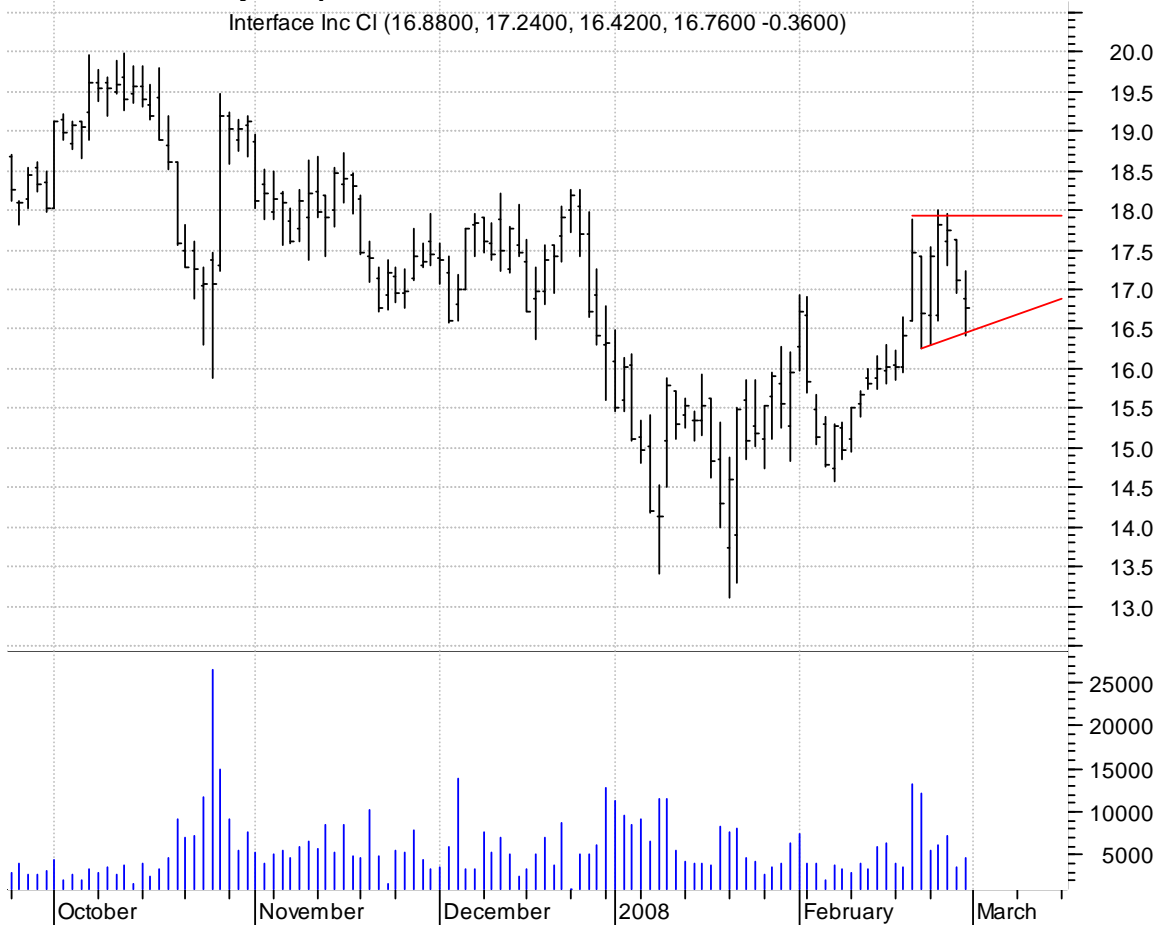
GLW symm. tri. / buy on upside brkout on increased volume

Corning Inc:NYSE (23.5500, 23.6300, 23.1400, 23.2300 -0.6100)



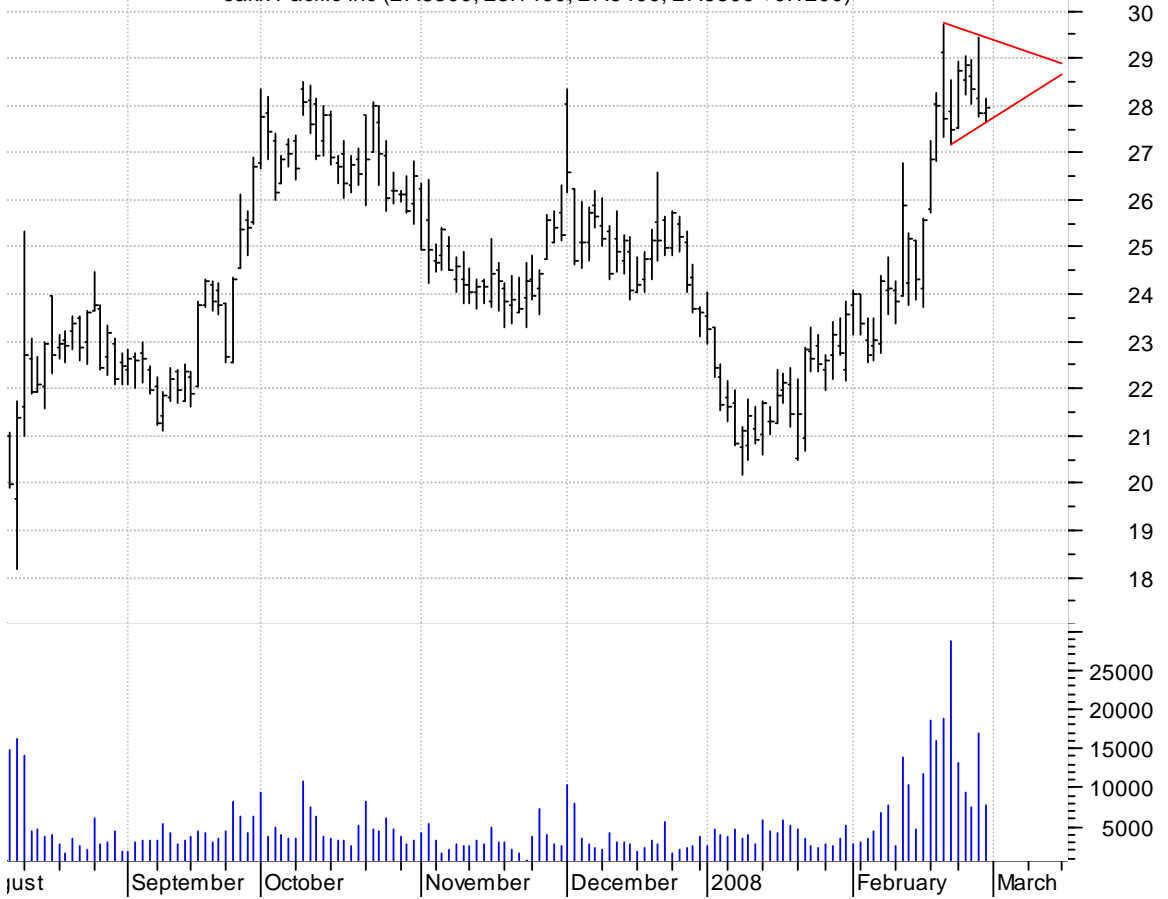
IFSIA asc. tri. / buy on upside brkout on increased volume

Interface Inc Cl (16.8800, 17.2400, 16.4200, 16.7600 -0.3600)



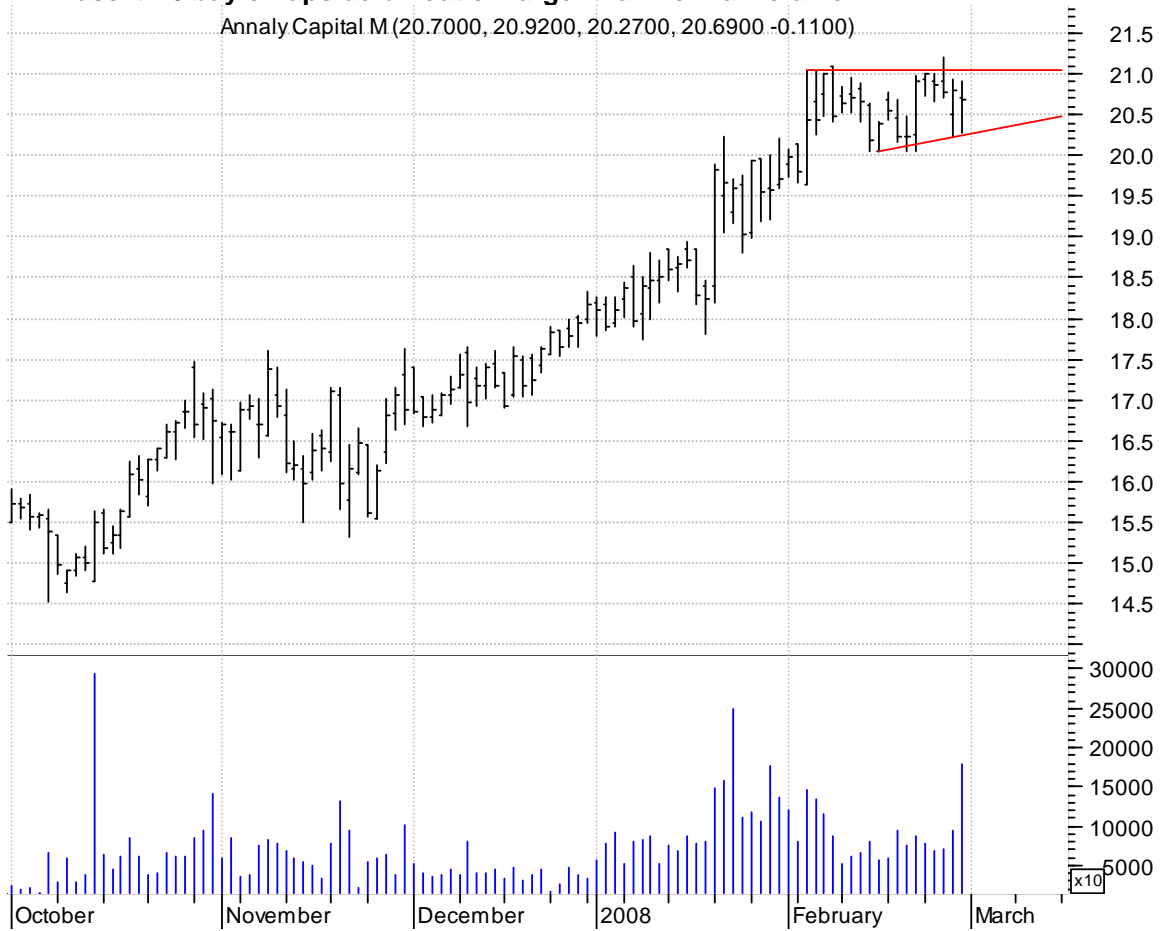
JAKK symm. tri. preceded by 'pole-like' move / buy on upside brkout on increased volume

Jakk Pacific Inc (27.8300, 28.1400, 27.6400, 27.9500 +0.1200)



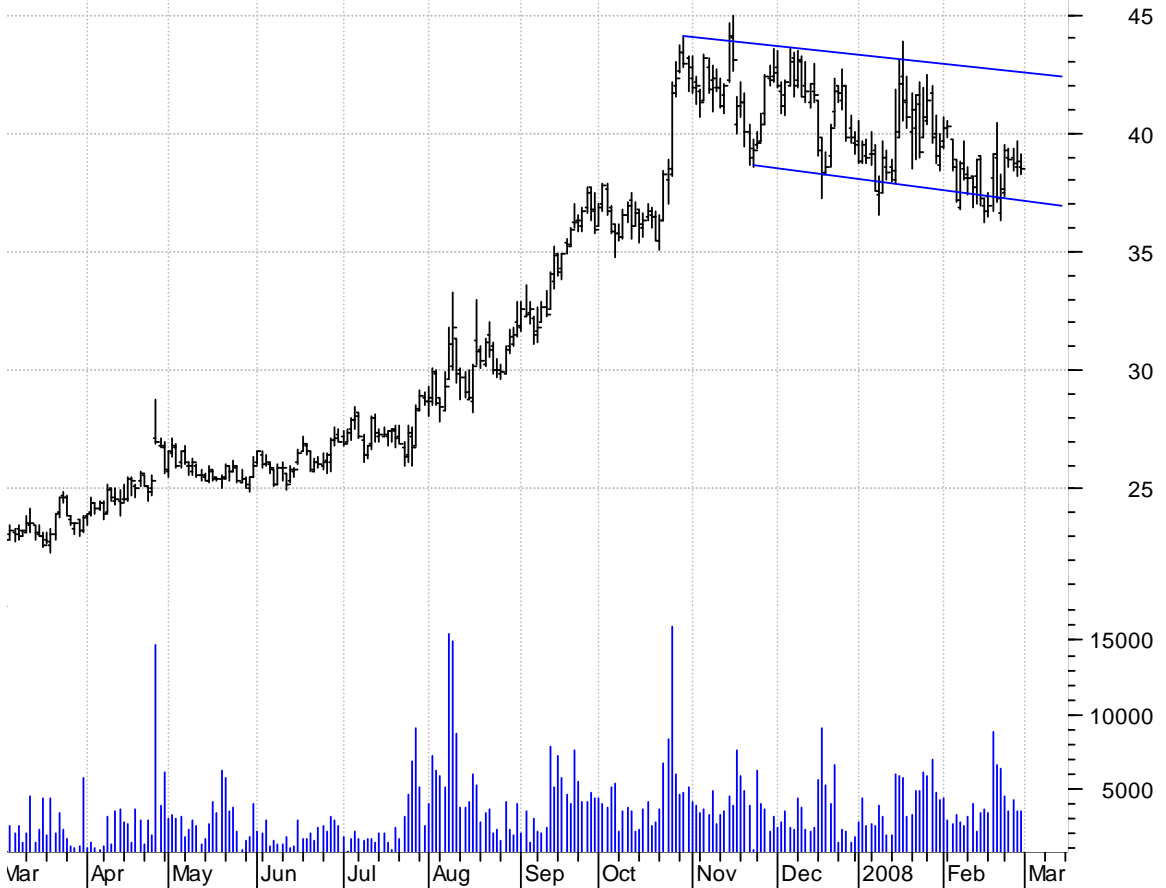
NLY asc. tri. / buy on upside brkout on larger than normal volume

Annaly Capital M (20.7000, 20.9200, 20.2700, 20.6900 -0.1100)



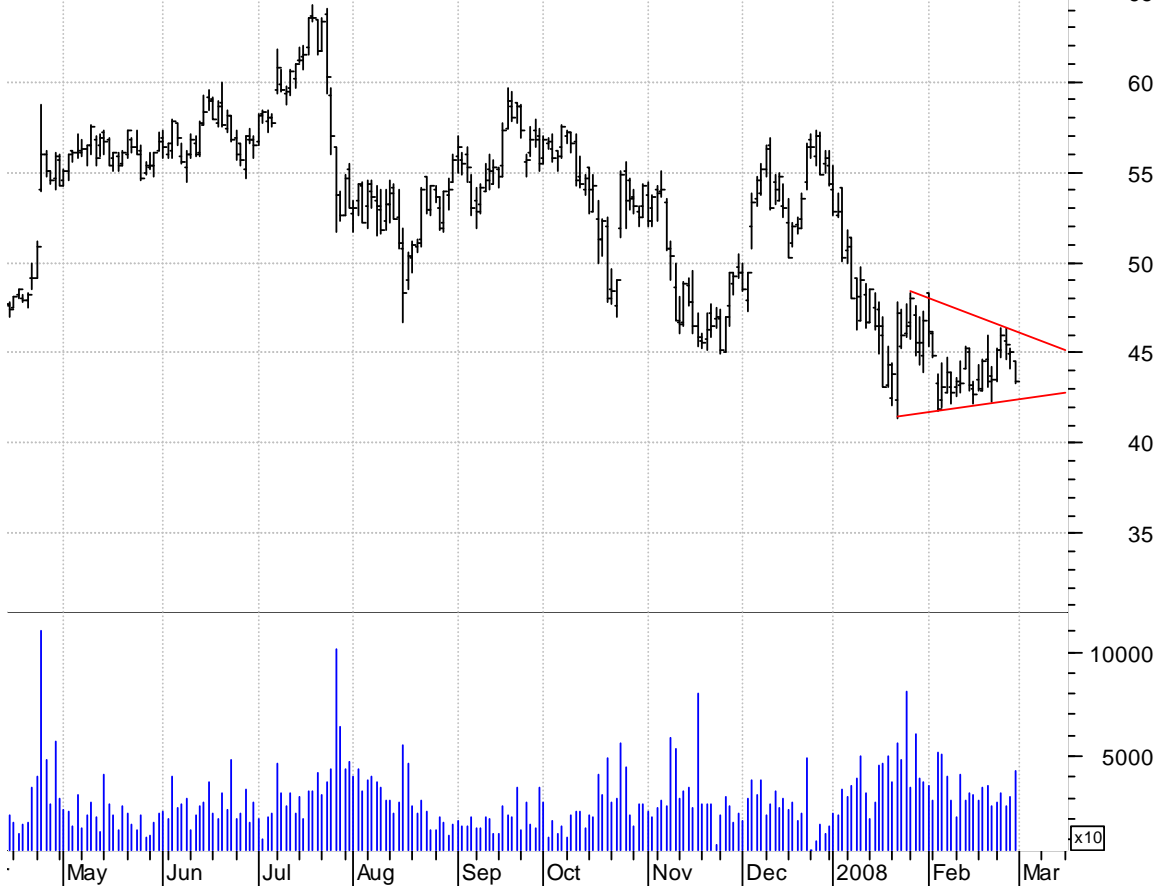
NUVA bullish flagging / buy on upside brkout on increased volume

NUVASIVE INC:OTC (38.5700, 39.1600, 38.2400, 38.5400 -0.2800)



PCAR symm. tri. / sell on downside brkout on increased volume

PACCAR Inc:OTC (44.5600, 44.5600, 43.3100, 43.3800 -1.6400)



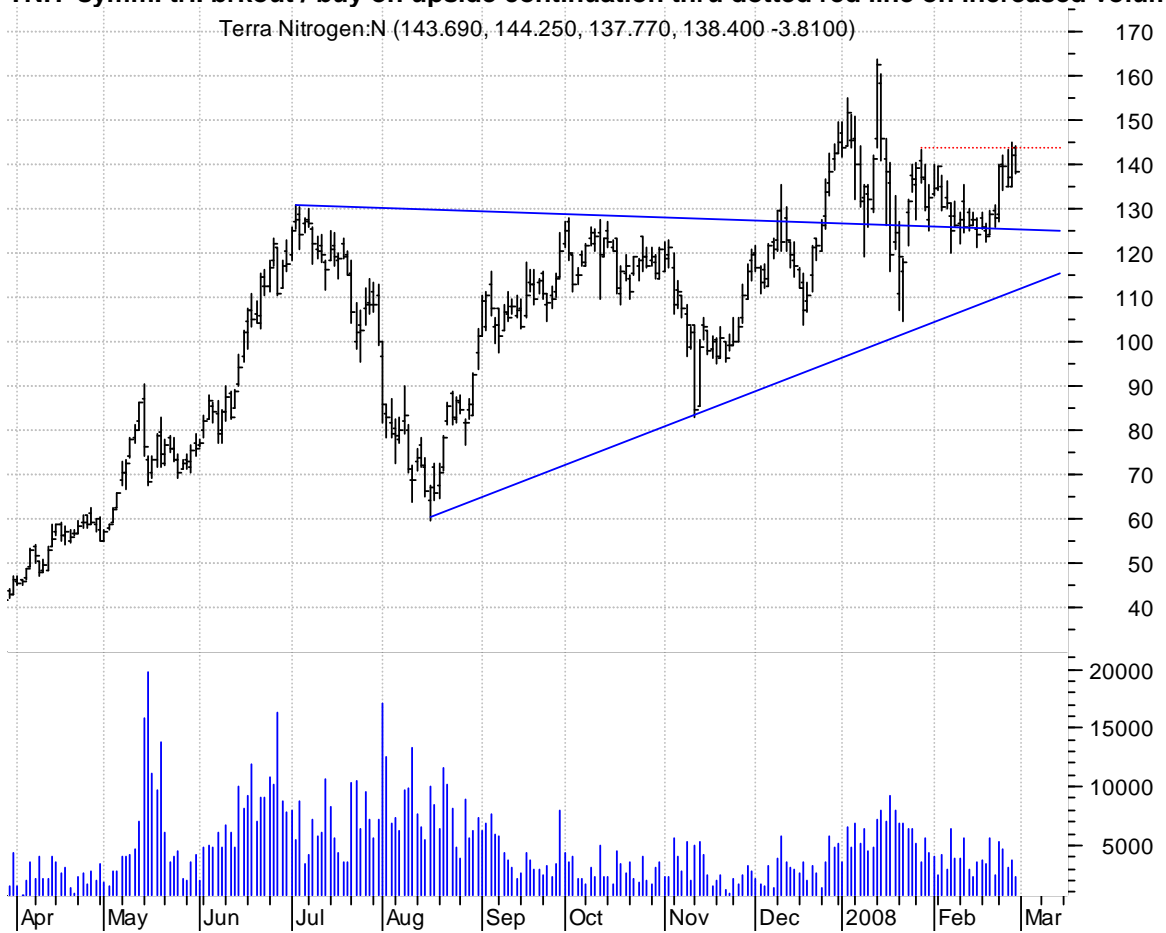
QRCP inv. h. & sh. / buy on upside breakout on increased volume

Quest Resource C (7.0300, 7.2400, 6.9200, 7.1000 +0.0300)



TNH symm. tri. breakout / buy on upside continuation thru dotted red line on increased volume

Terra Nitrogen:N (143.690, 144.250, 137.770, 138.400 -3.8100)



VIVO symm. tri. brkout / buy on upside continuation thru dotted red line on increased volume



chartpatterns.com

Chart Pattern Analysis for Timing the Markets

KMatras@aol.com