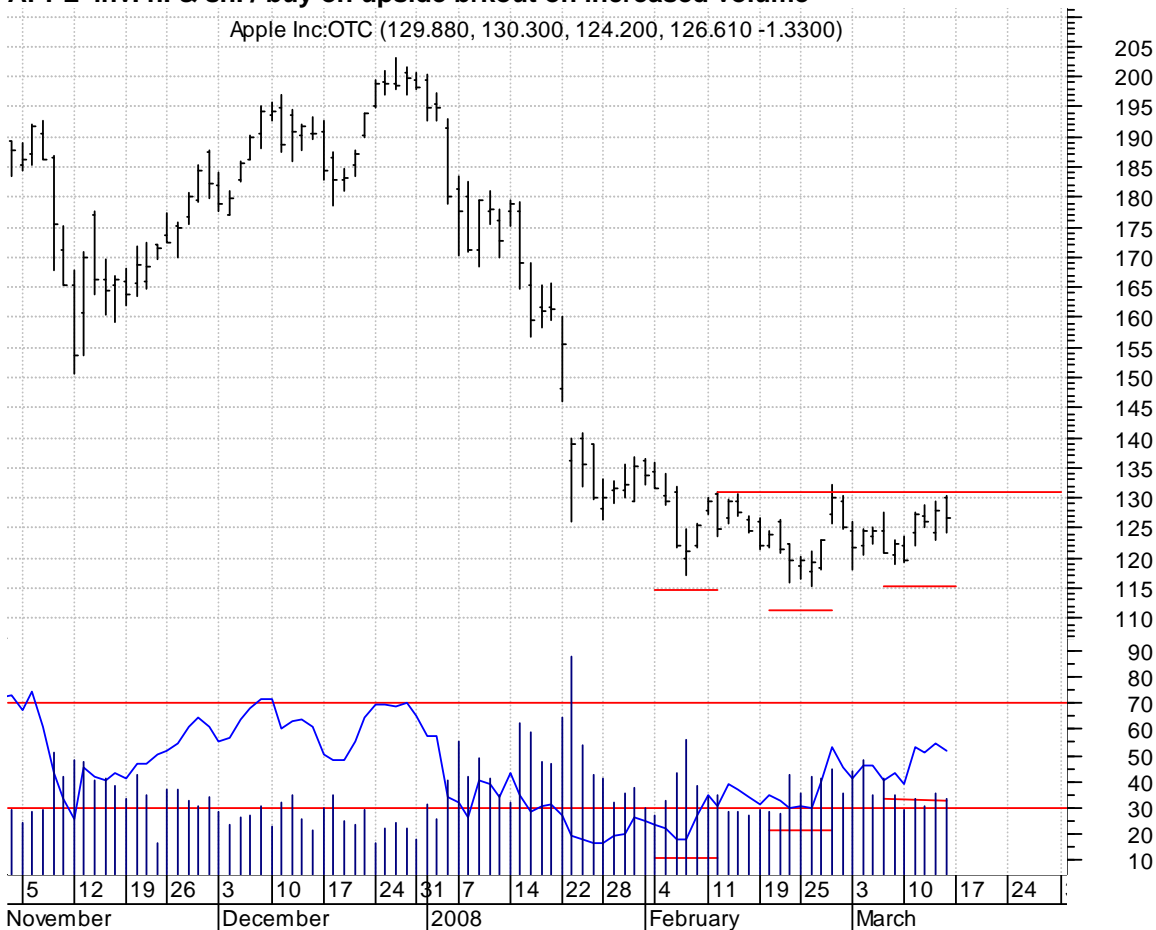


APPL inv. h. & sh. / buy on upside breakout on increased volume

Apple Inc:OTC (129.880, 130.300, 124.200, 126.610 -1.3300)



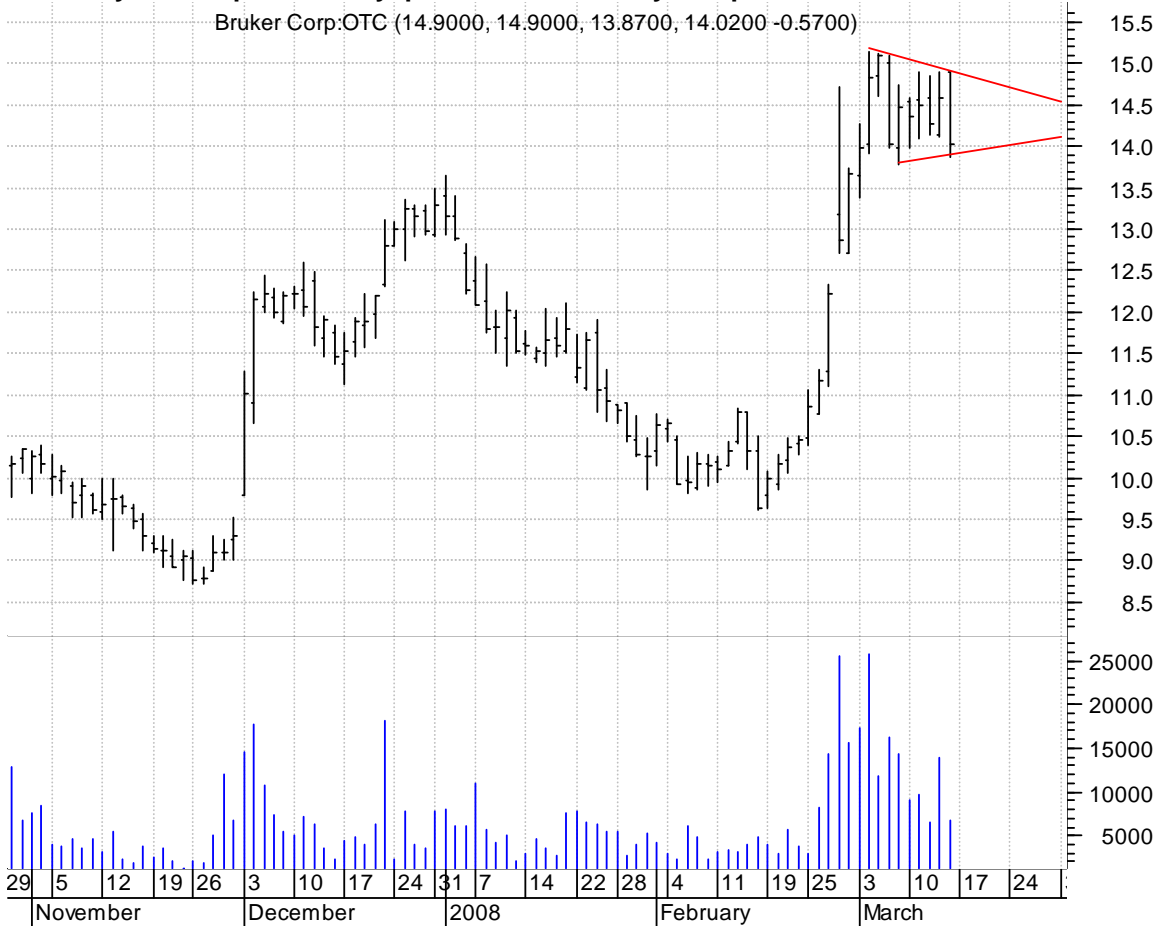
BIG asc. tri. / buy on upside breakout on increased volume

Big Lots Inc:NYS (21.2300, 21.4100, 19.8600, 20.4000 -0.6200)



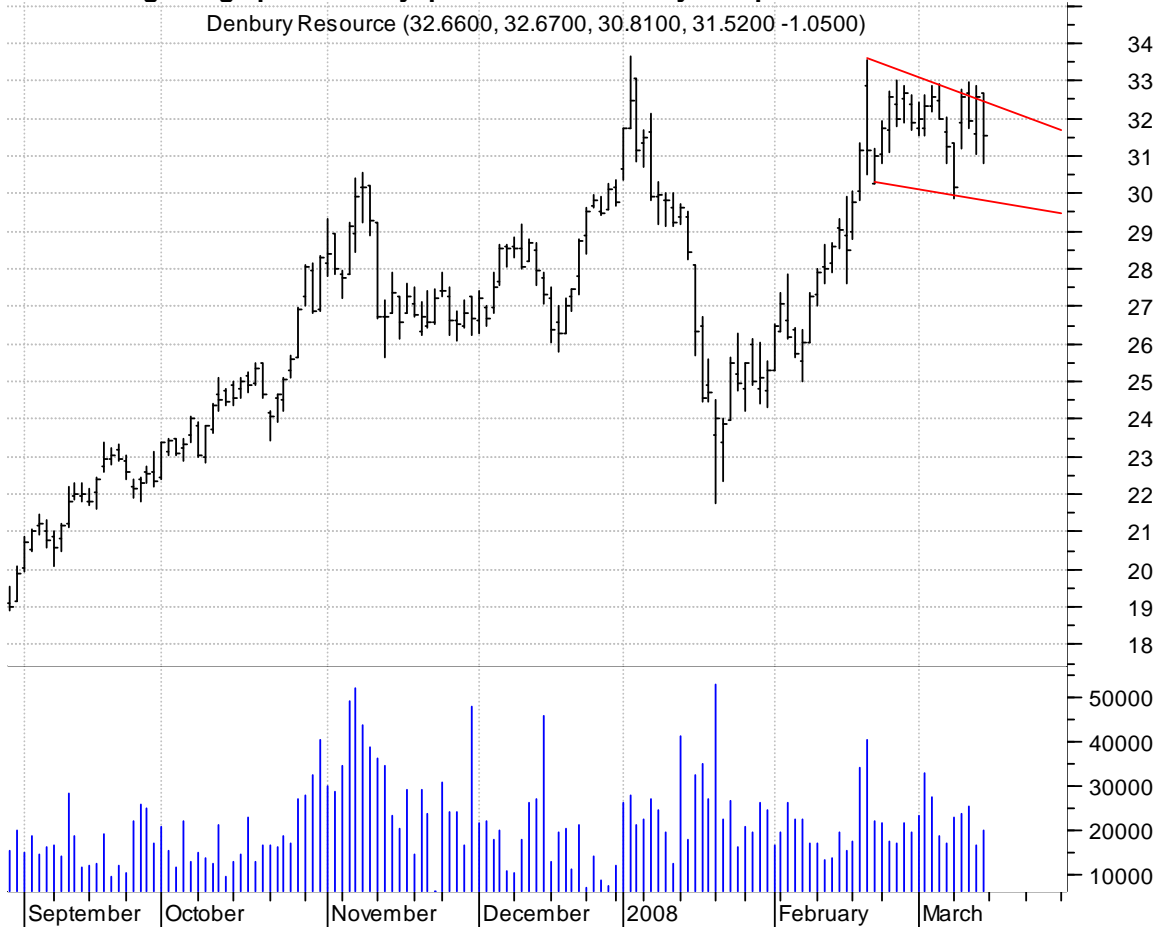
BRKR symm. tri. preceded by 'pole-like' move / buy on upside breakout on increased volume

Braker Corp.OTC (14.9000, 14.9000, 13.8700, 14.0200 -0.5700)

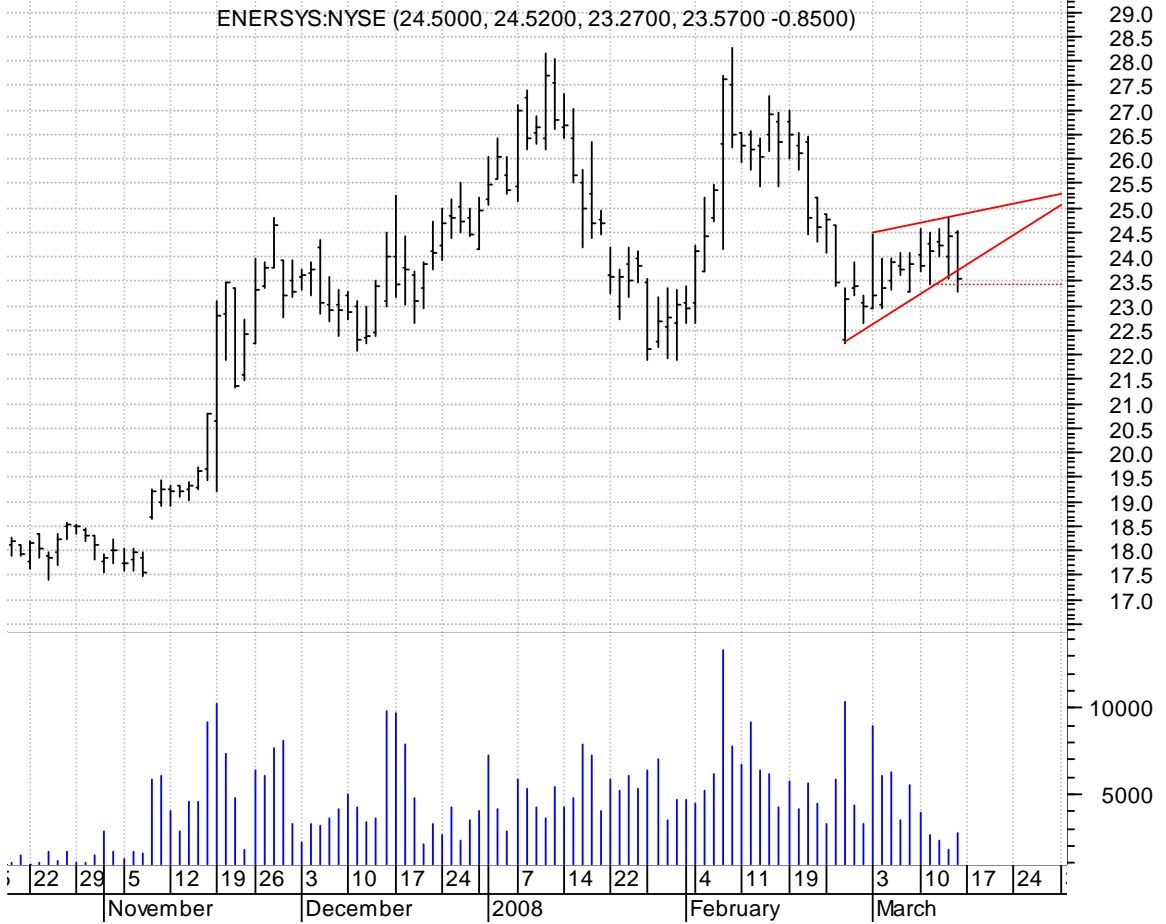


DNR falling wedge preceded by 'pole-like' move / buy on upside breakout on increased volume

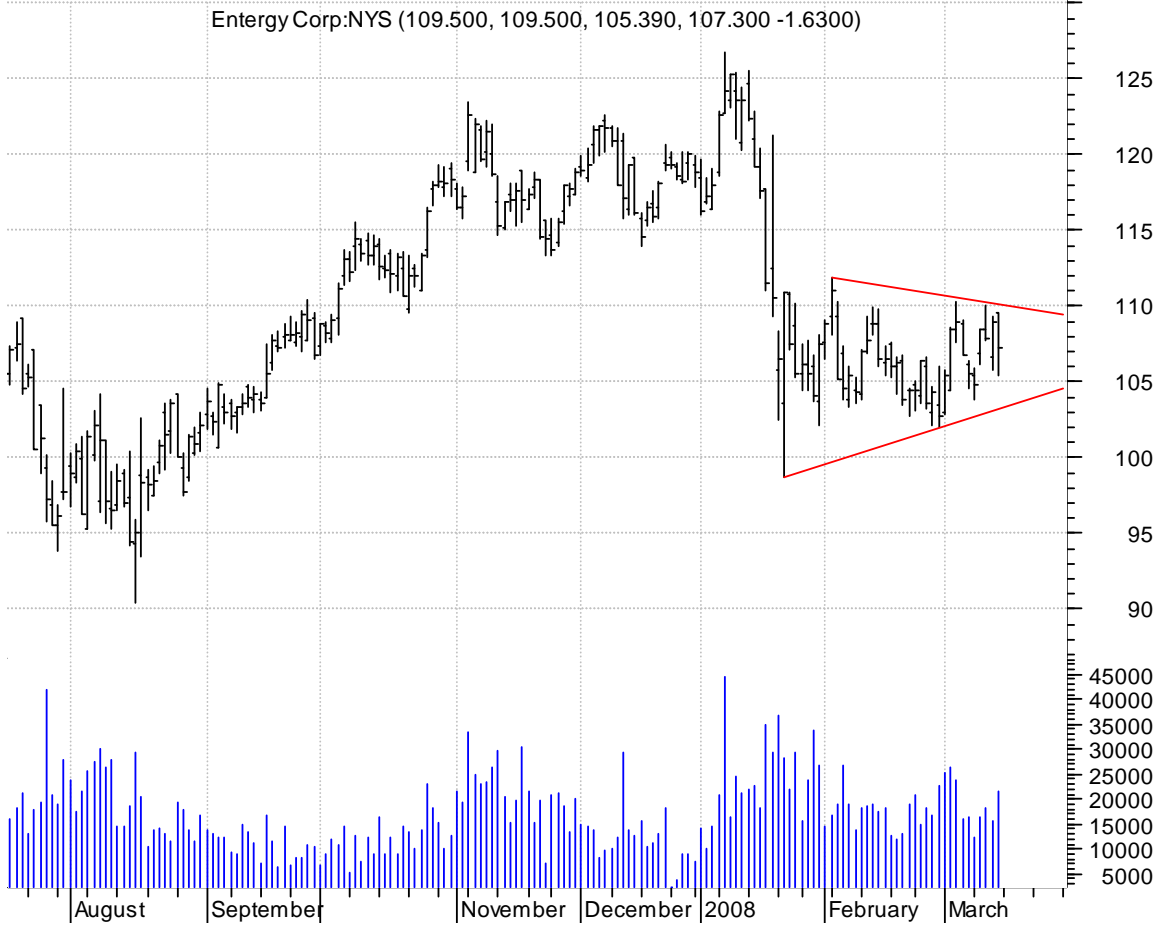
Denbury Resource (32.6600, 32.6700, 30.8100, 31.5200 -1.0500)



ENS rising wedge / sell on downside brkout thru dotted red line on increased volume

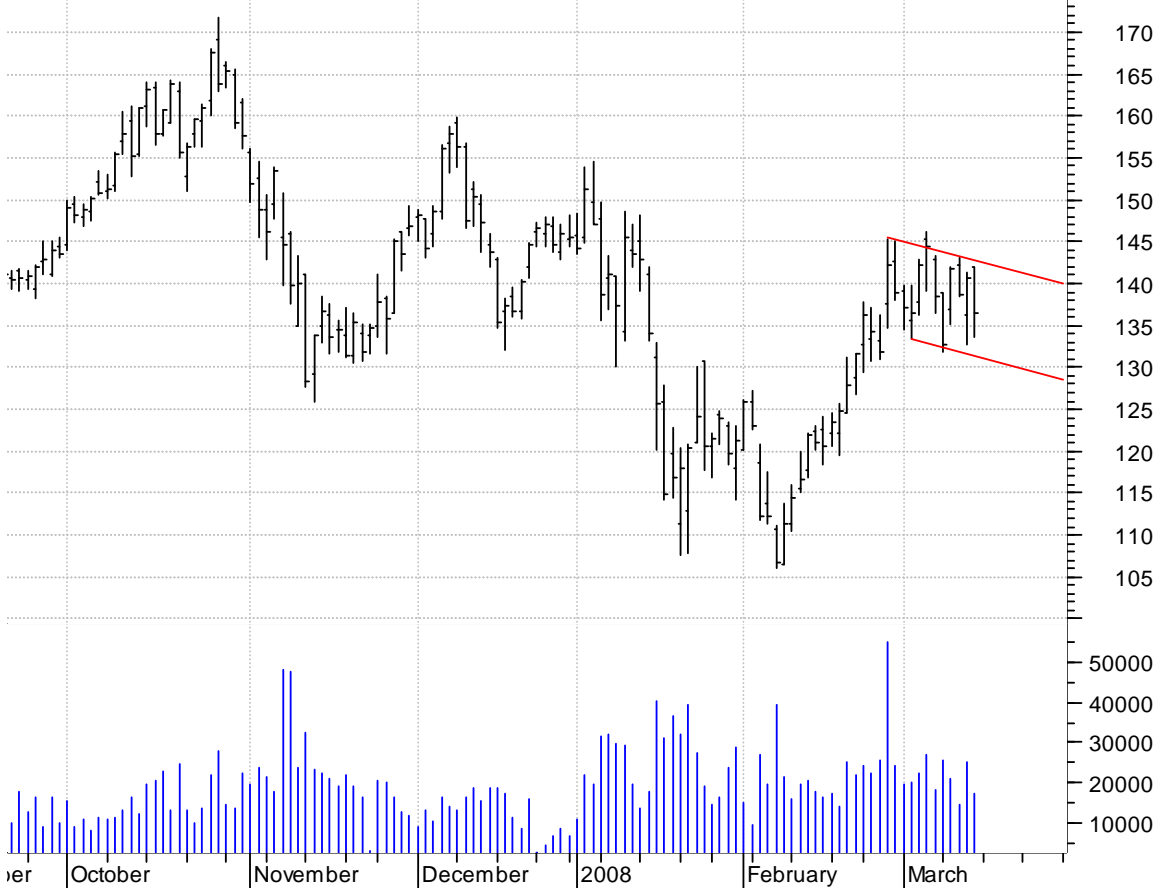


ETR symm. tri. preceded by 'pole-like' move / sell on downside brkout on increased volume



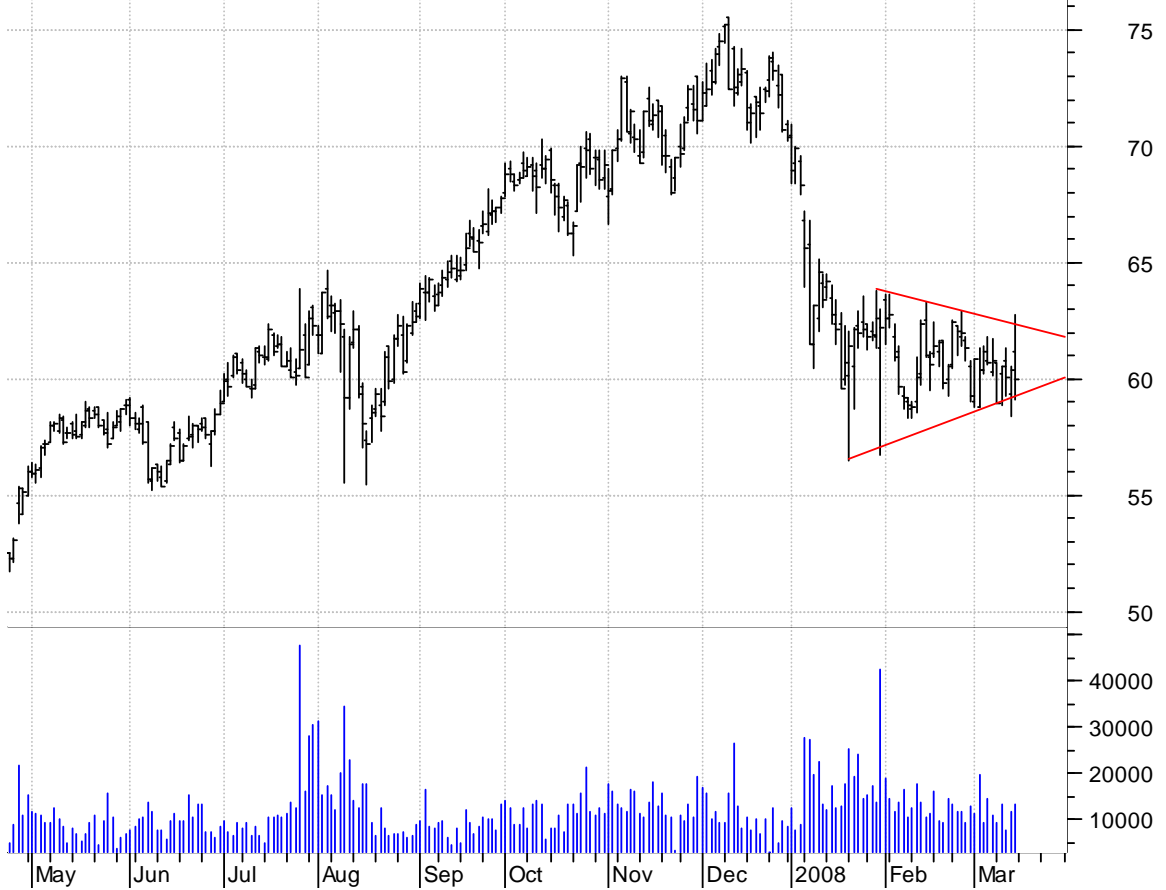
FLR bullish flagging / buy on upside brkout on increased volume

FLUOR CP:NYSE (141.950, 141.950, 133.630, 136.540 -4.0900)



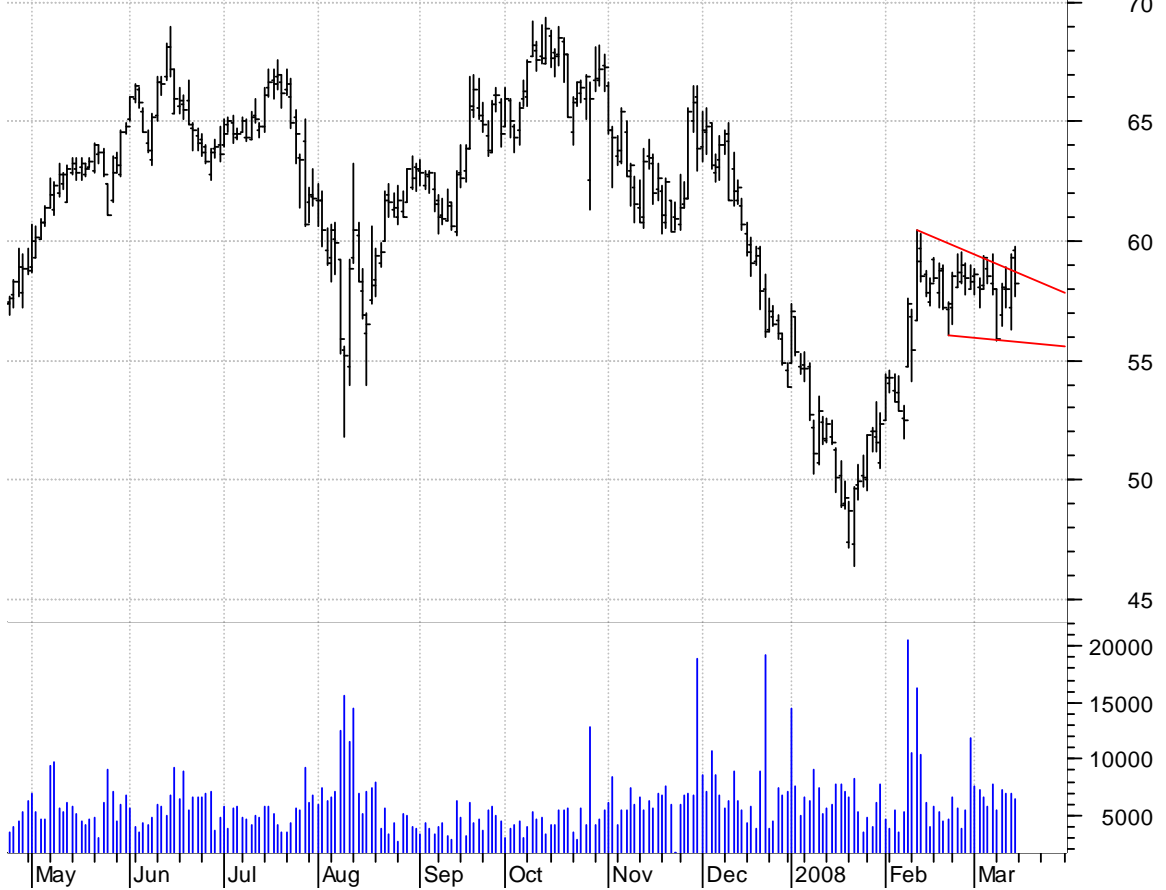
GR symm. tri. preceded by 'pole-like' move / buy on downside brkout on increased volume

Goodrich Corp:NY (61.1900, 62.7200, 59.1400, 59.9600 -0.4000)



LZ falling wedge / buy on upside brkout on increased volume

Lubrizon Corp (t 59.6000, 59.7300, 57.6500, 58.2100 -1.1100)



MON symm. tri. / buy on upside brkout on increased volume

MONSANTO CO:NYSE (111.760, 112.170, 105.870, 108.790 -1.2200)



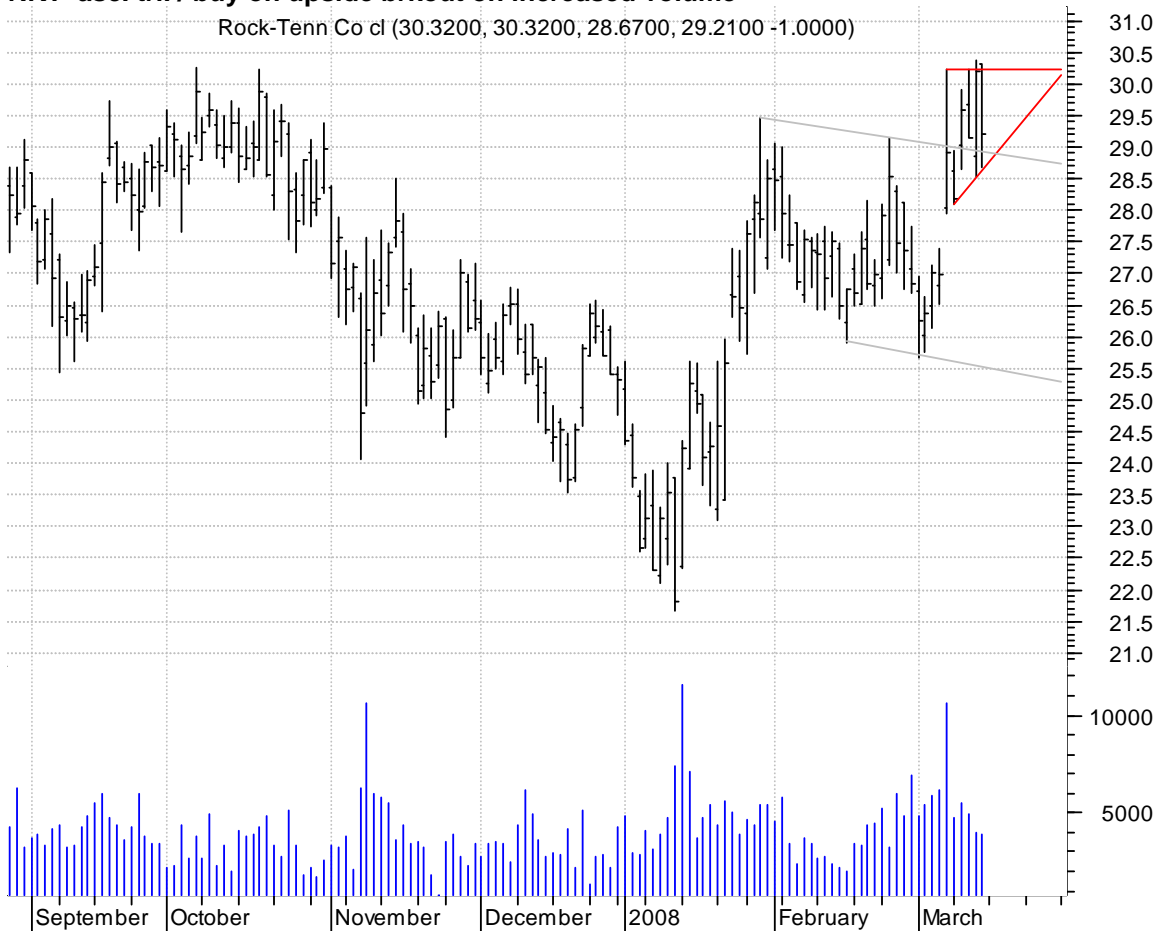
OME symm. tri. preceded by 'pole-like' move / buy on upside brkout on increased volume

Omega Protein Co (12.4000, 12.4000, 11.6800, 12.1000 -0.2100)



RKT asc. tri. / buy on upside brkout on increased volume

Rock-Tenn Co cl (30.3200, 30.3200, 28.6700, 29.2100 -1.0000)



SPW sloppy desc. tri. / sell on downside brkout on increased volume

SPX Cp:NYSE (106.070, 106.070, 100.500, 102.240 -2.8700)



TUP bullish flagging / buy on upside brkout on increased volume

Tupperware Brand (36.8800, 36.9300, 35.1100, 35.4500 -1.0000)



XRTX asc. tri. / buy on upside brkout on increased volume

XYRATEX LTD:OTC (18.4800, 18.6300, 17.3200, 17.9200 -0.5500)



chartpatterns.com

Chart Pattern Analysis for Timing the Markets

KMatras@aol.com