

**ADS symm. tri. / buy on upside brkout thru dotted red line on increased volume**



**BABY symm. tri. / buy on upside brkout on larger than normal volume**



**BCR asc. tri. / buy on upside brkout on increased volume**

Bard (C.R.) Inc: (94.0800, 94.4300, 92.6300, 93.9800 +0.000)



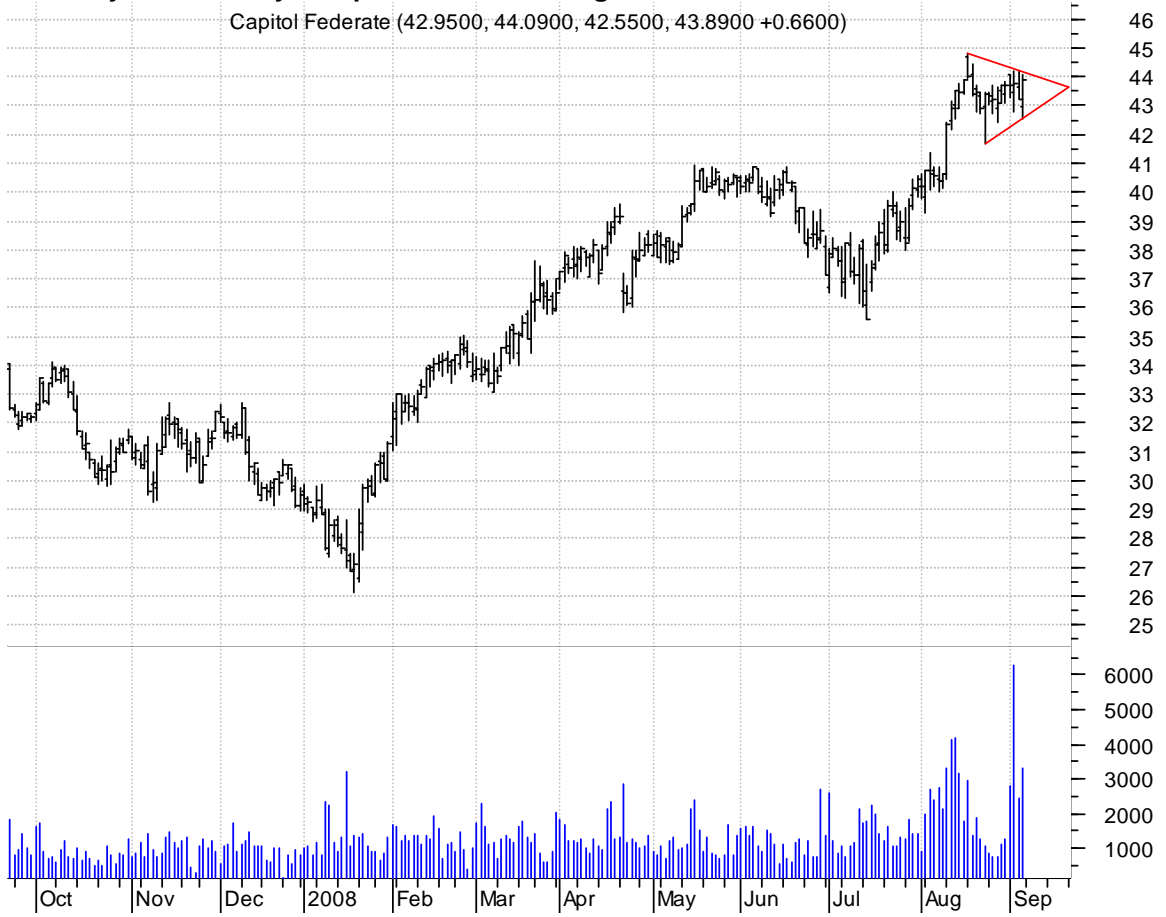
**BIG asc. tri. / buy on upside brkout on increased volume**

Big Lots Inc:NYS (30.0000, 30.9800, 29.9000, 30.9000 +0.6800)



**CFFN symm. tri. / buy on upside brkout on larger than normal volume**

Capitol Federate (42.9500, 44.0900, 42.5500, 43.8900 +0.6600)



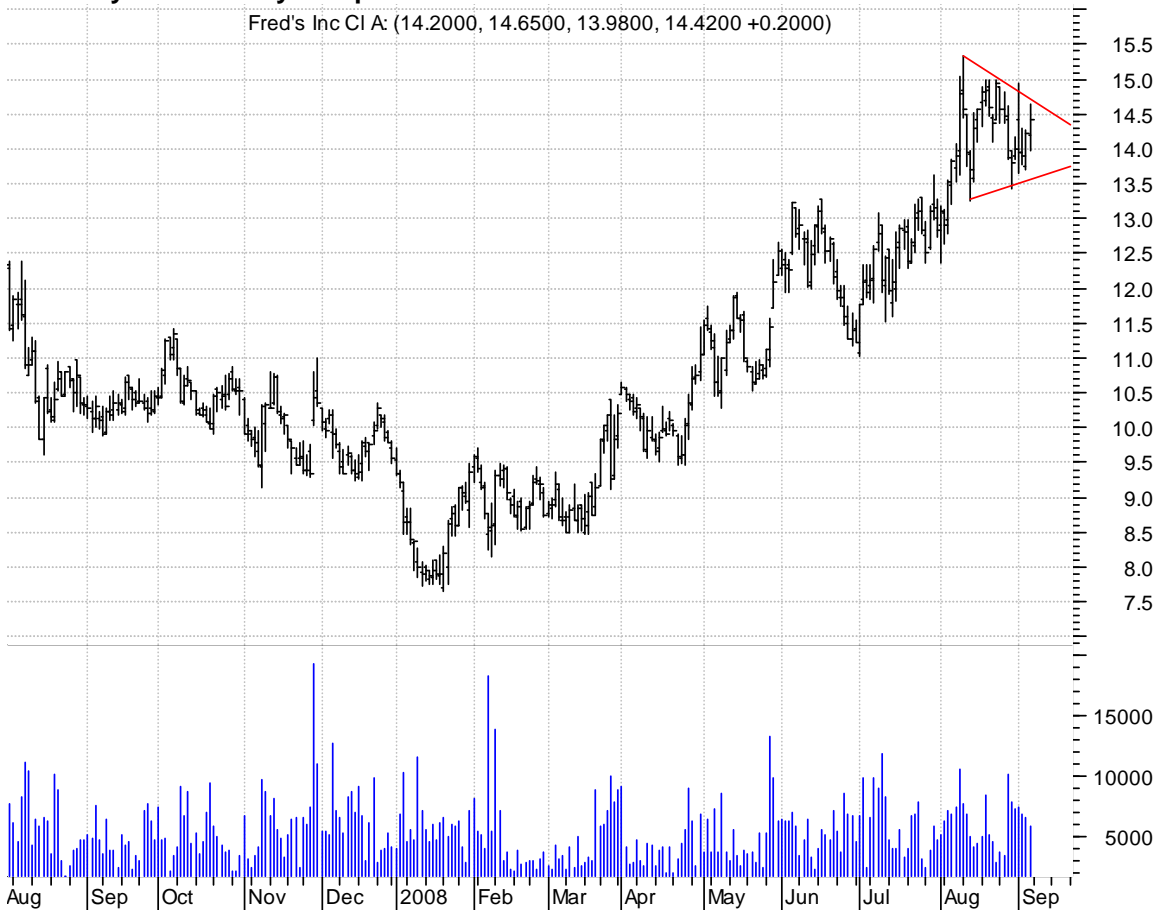
**DRIV asc. tri. / buy on upside brkout on increased volume**

Digital River In (43.3000, 43.9700, 43.0500, 43.8000 +0.1300)



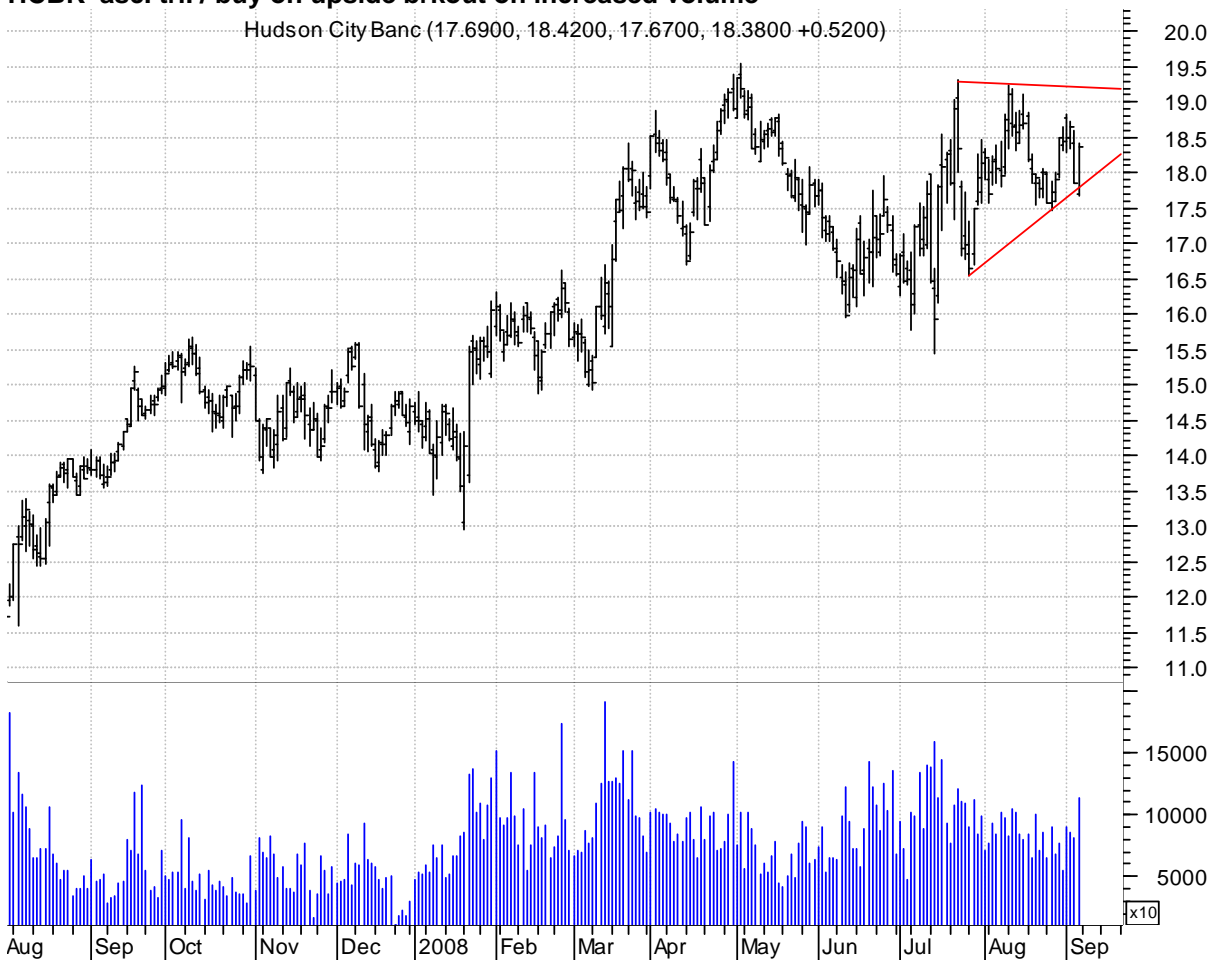
### FRED symm. tri. / buy on upside breakout on increased volume

Fred's Inc CI A: (14.2000, 14.6500, 13.9800, 14.4200 +0.2000)



### HCBK asc. tri. / buy on upside breakout on increased volume

Hudson City Banc (17.6900, 18.4200, 17.6700, 18.3800 +0.5200)



**HEW falling wedge preceded by 'pole-like' move / buy on upside brkout on increased volume**

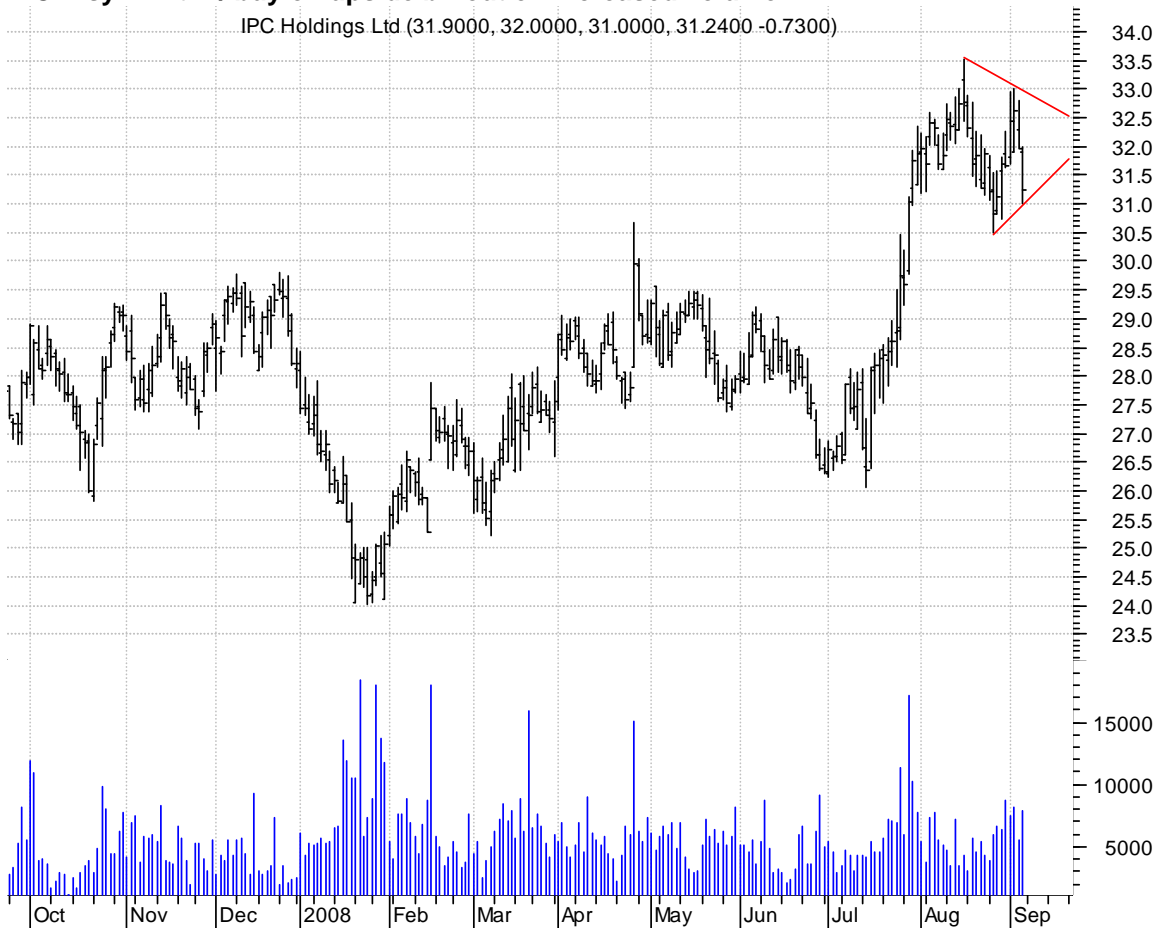


**HOKU symm. tri. / buy on upside brkout on increased volume**



**IPCR symm. tri. / buy on upside brkout on increased volume**

IPC Holdings Ltd (31.9000, 32.0000, 31.0000, 31.2400 -0.7300)



**KMP symm. tri. / buy on upside brkout on increased volume**

Kinder Morgan En (56.8100, 56.8300, 55.5100, 56.1400 -0.5000)



**LPNT symm. tri. preceded by 'pole-like' move / buy on upside brkout on increased volume**

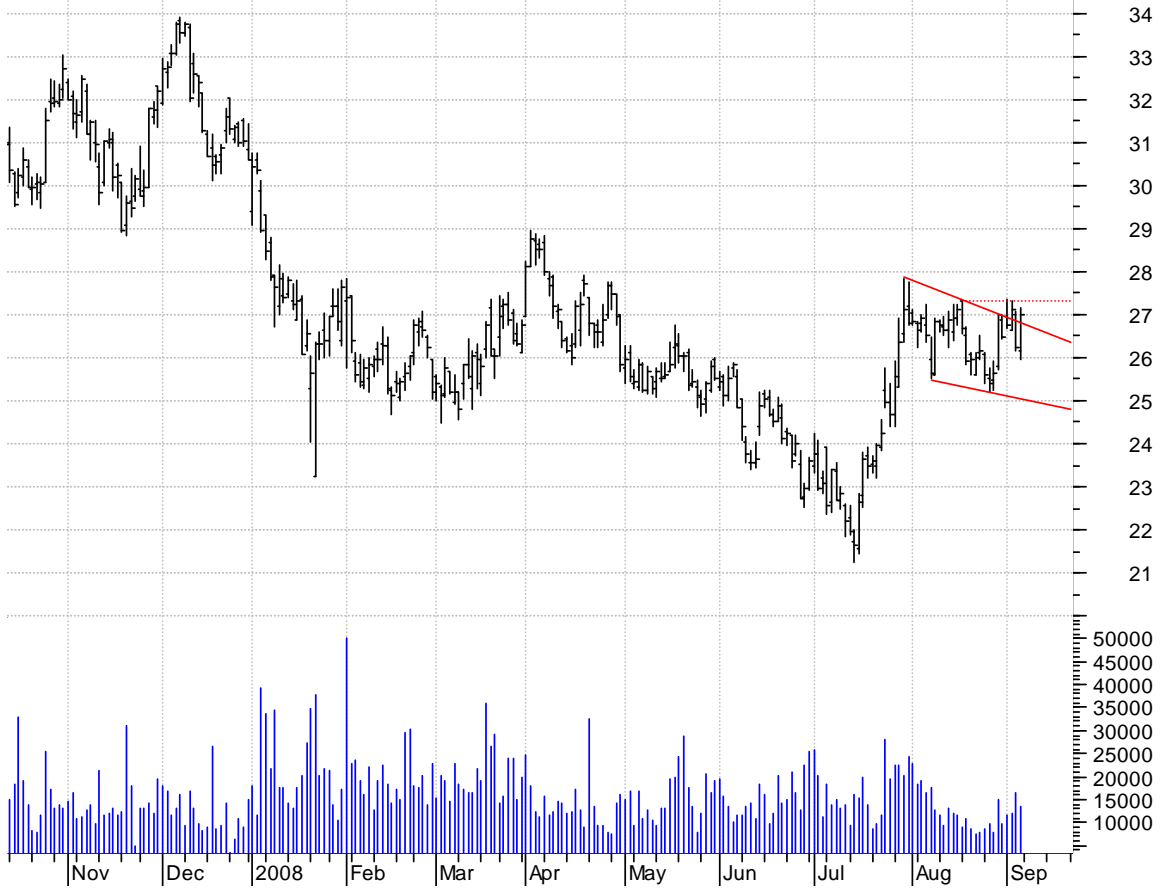


**LTM asc. tri. / buy on upside brkout on increased volume**



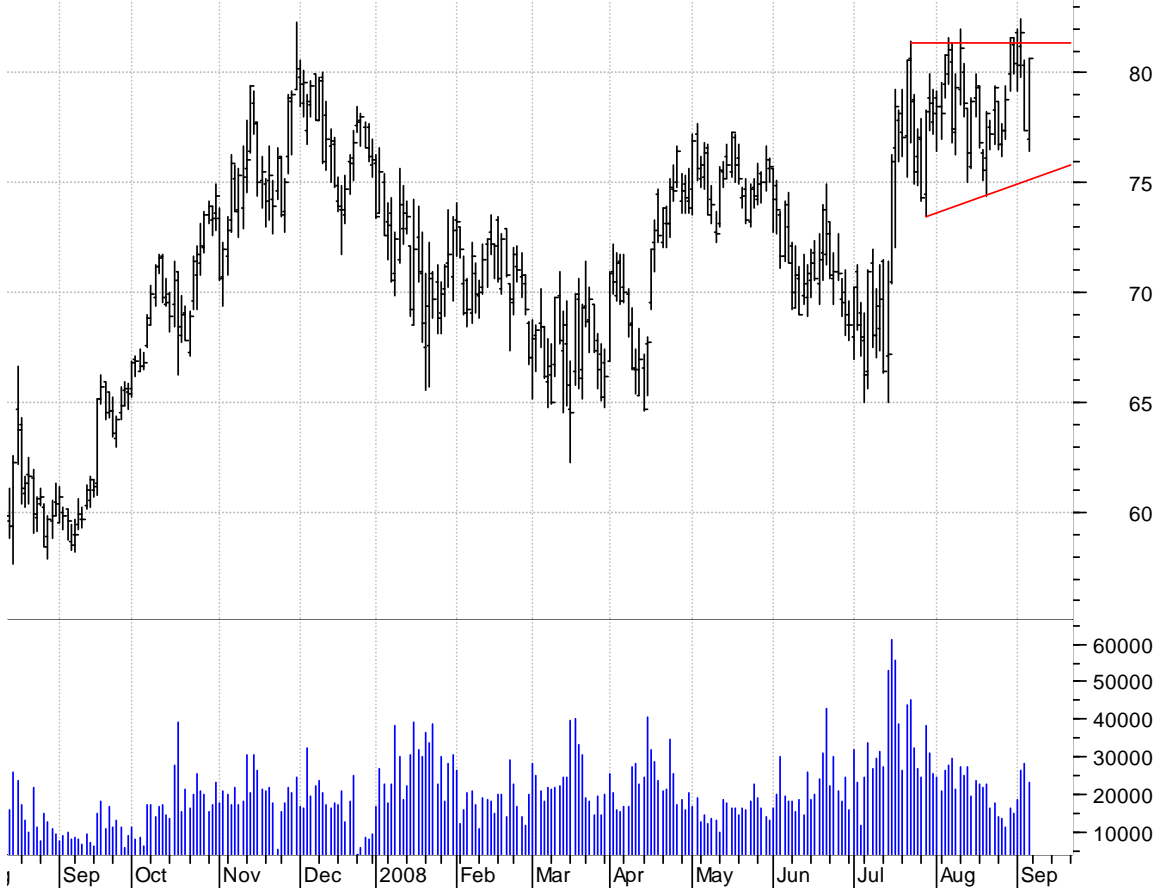
**MWV falling wedge / buy on upside brkout thru dotted red line on increased volume**

Meadwestvaco Cor (26.1400, 27.1700, 25.9600, 27.0000 +0.7500)



**NTRS asc. tri. preceded by 'pole-like' move / buy on upside brkout on increased volume**

Northern Trust C (77.0000, 80.6400, 76.4200, 80.6300 +3.2200)





**PKG asc. tri. / buy on upside brkout on increased volume**



**SUNH symm. tri. preceded by 'pole-like' move / buy on upside brkout on increased volume**



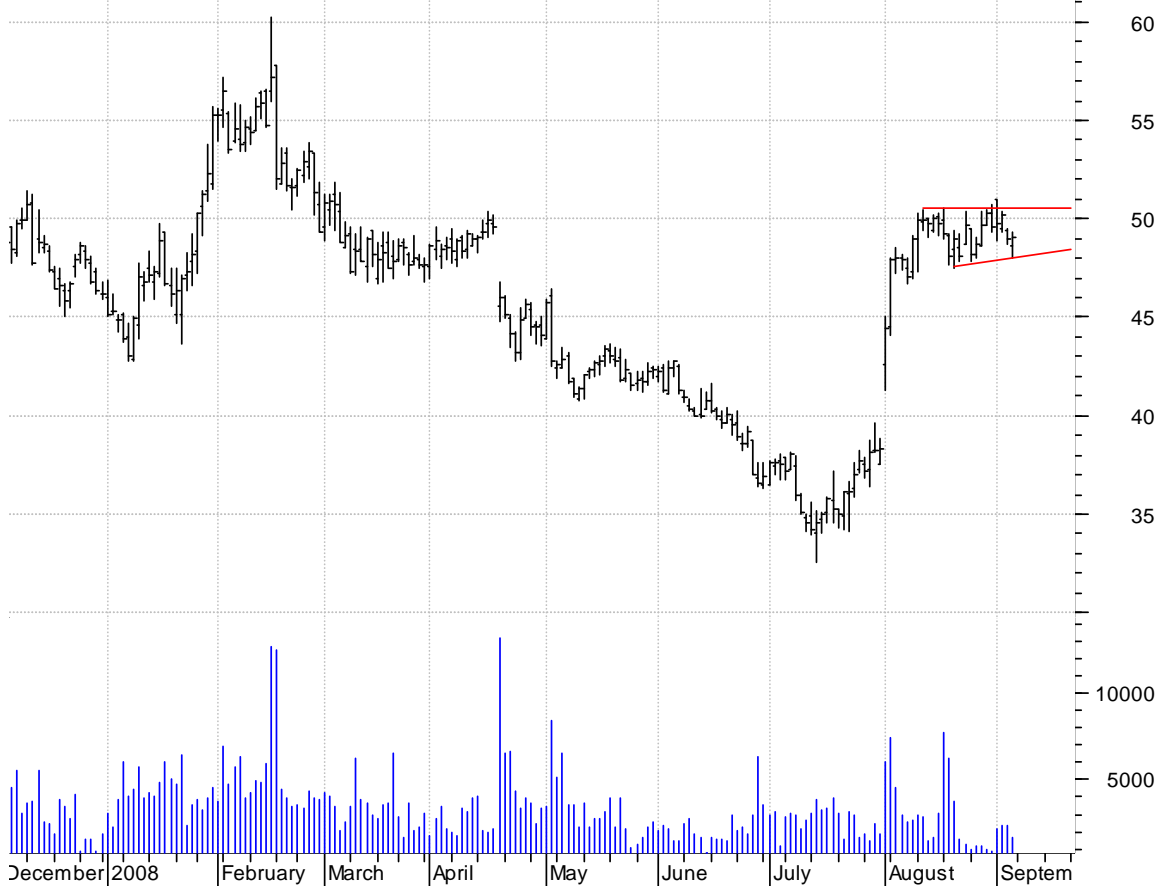
**TACT symm. tri. preceded by 'pole-like' move / buy on upside brkout on increased volume**

Transact Technol (12.6100, 13.2800, 11.9000, 13.0300 +0.2800)

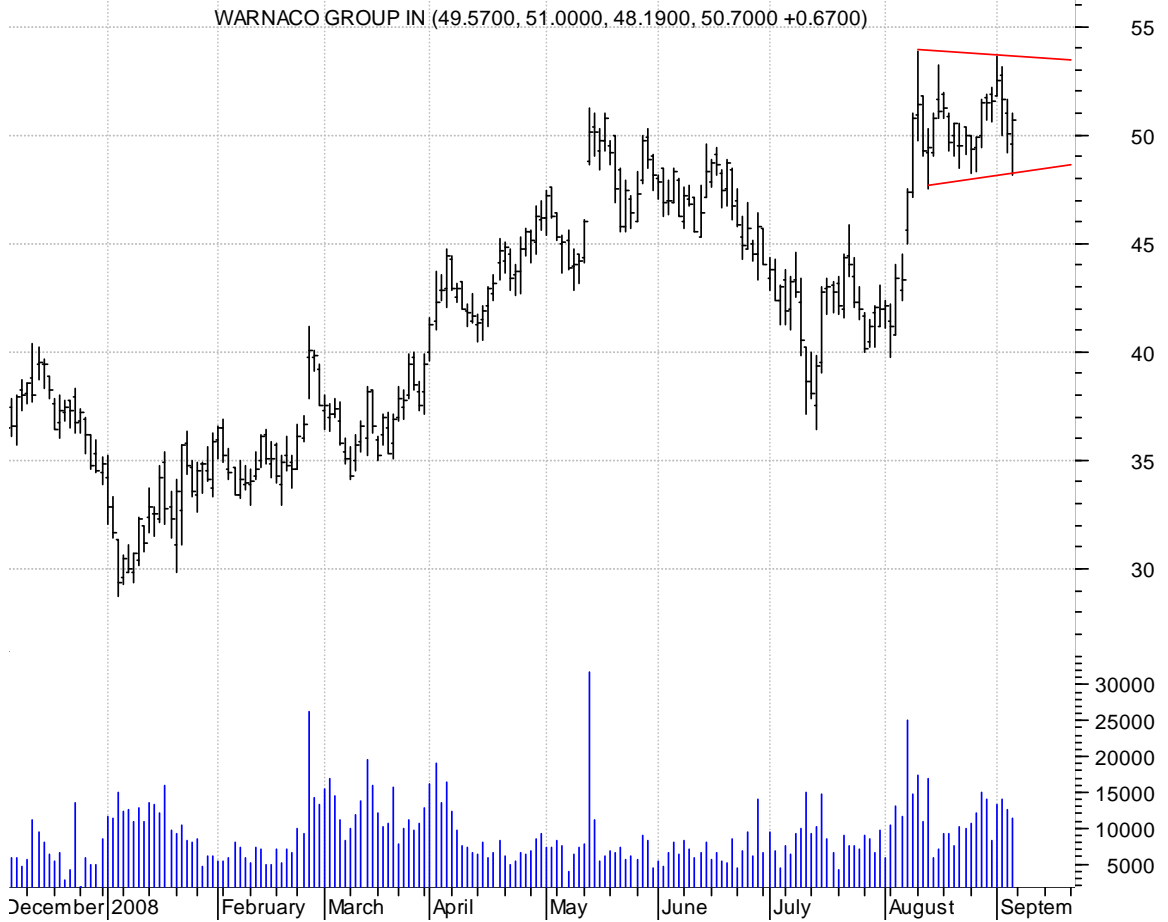


**USTR asc. tri. preceded by 'pole-like' move / buy on upside brkout on increased volume**

United Stationer (48.6600, 49.3100, 48.0300, 49.0700 +0.0800)



**WRC symm. tri. preceded by 'pole-like' move / buy on upside breakout on increased volume**



**chartpatterns.com**  
Chart Pattern Analysis for Timing the Markets

[KMatras@aol.com](mailto:KMatras@aol.com)