

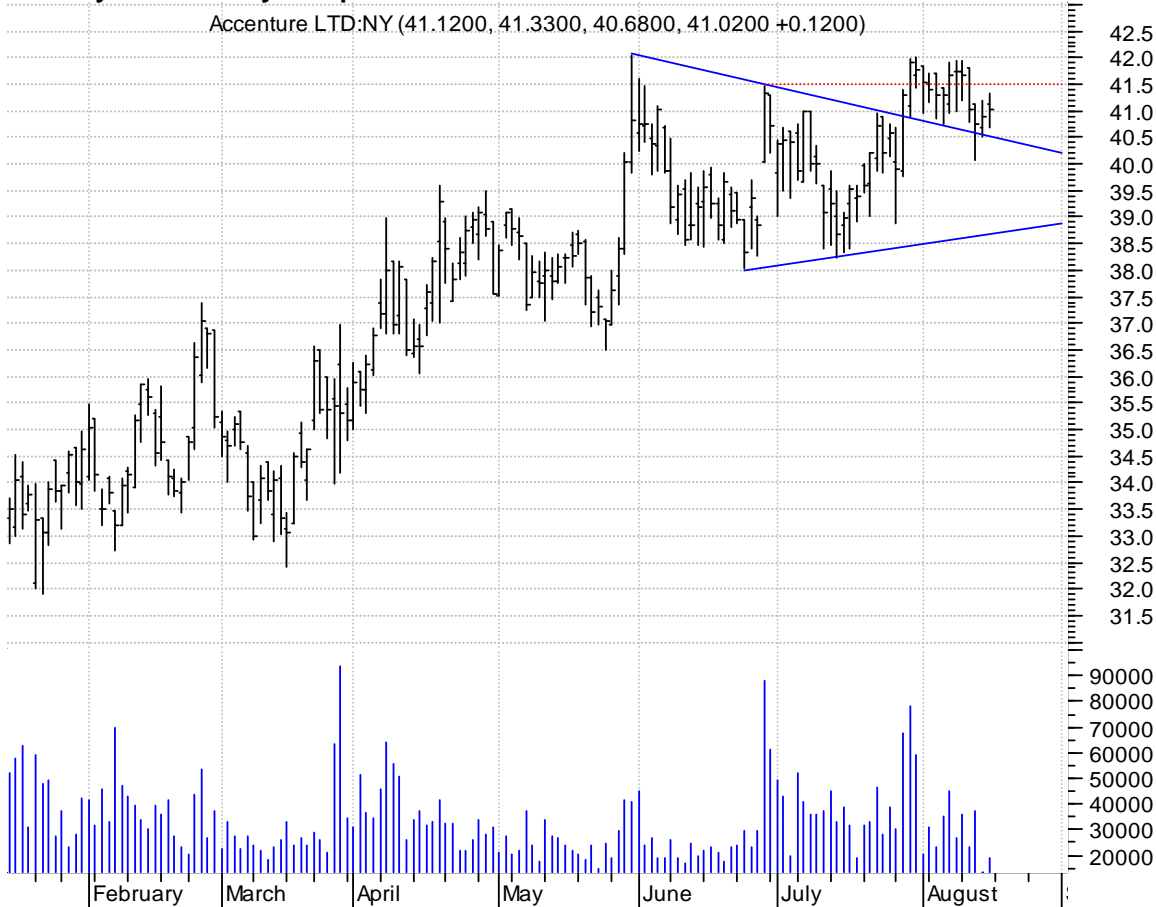
**ABI rectangle / buy on upside brkout on increased volume**

Applera Corp:NYS (36.7000, 36.8000, 36.3400, 36.6000 -0.0400)



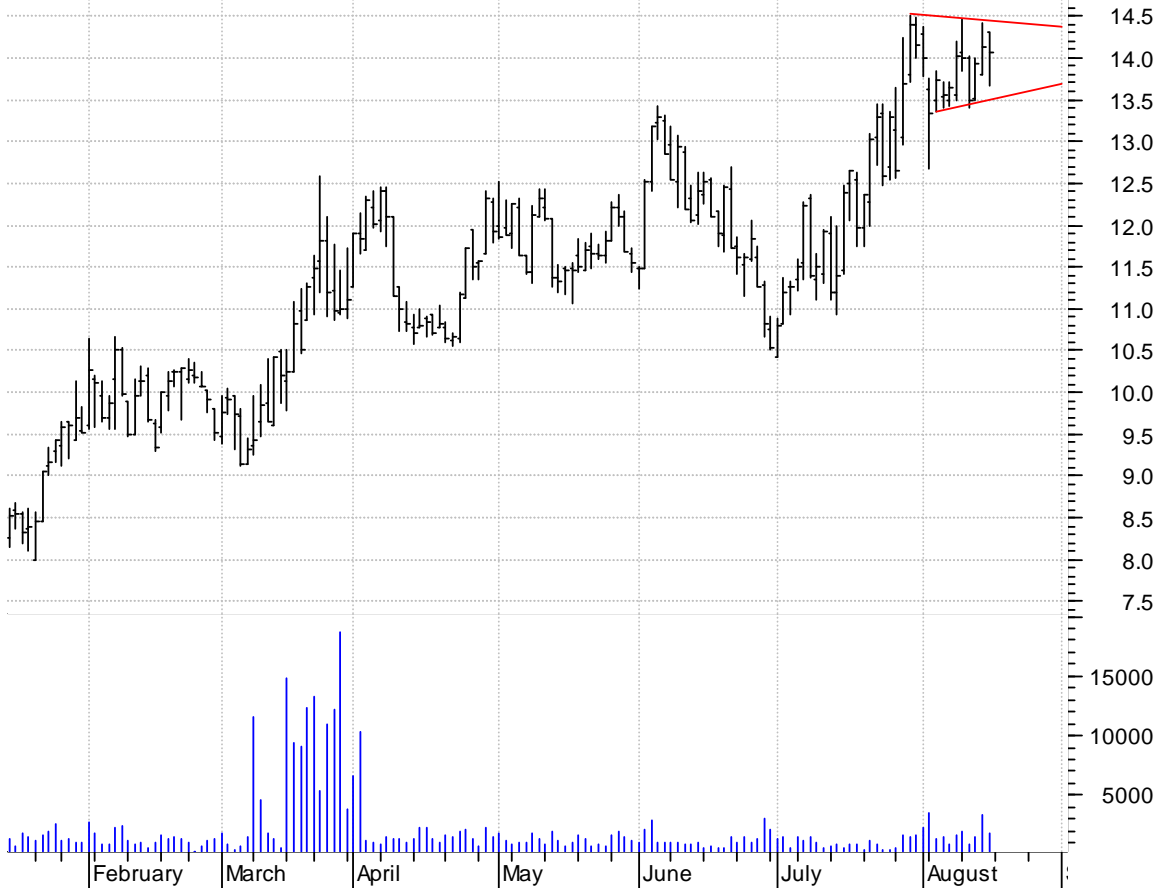
**ACN symm. tri. / buy on upside brkout thru dotted red line on increased volume**

Accenture LTD:NY (41.1200, 41.3300, 40.6800, 41.0200 +0.1200)



**AEC sloppy symm. tri. / buy on upside brkout on increased volume**

Associated Estat (14.3000, 14.3000, 13.6700, 14.0700 -0.0600)



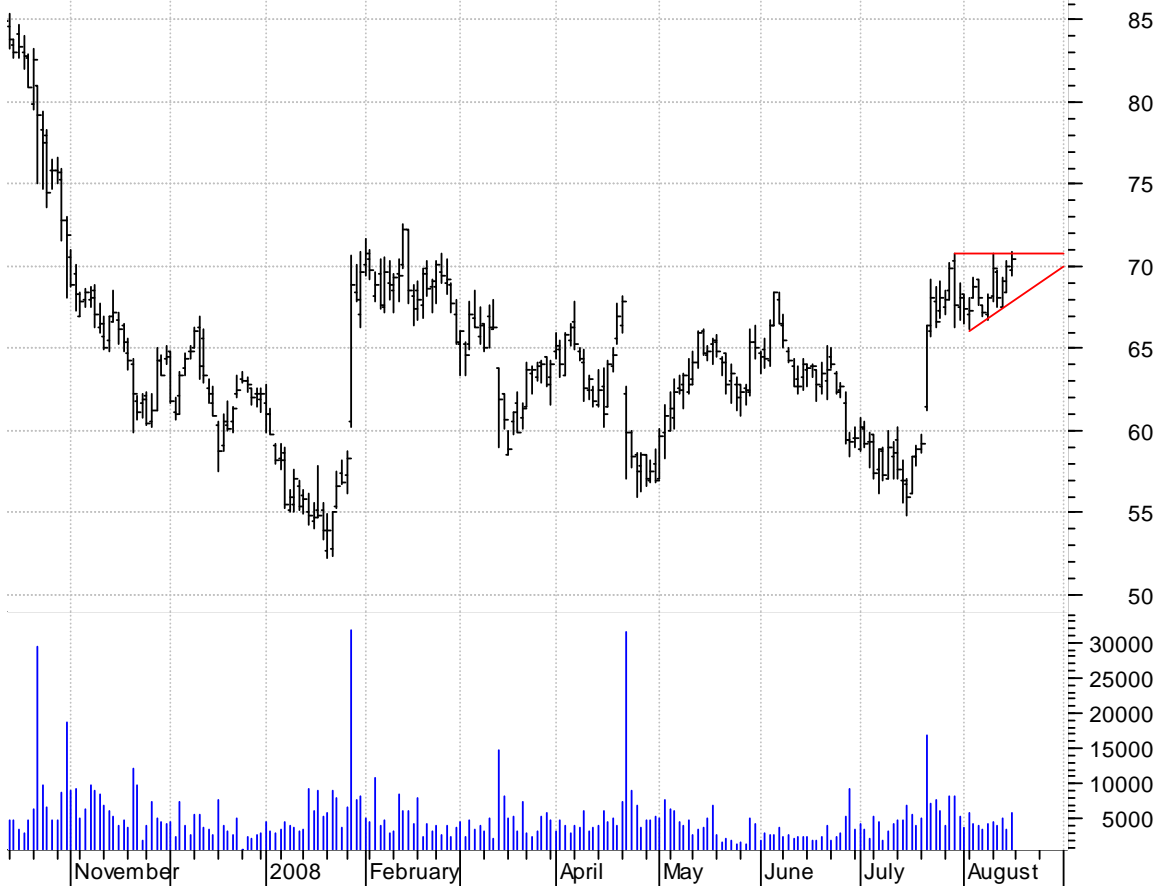
**AFSI symm. tri. / buy on upside brkout on increased volume**

AmTrust Financia (14.0300, 14.1100, 13.6100, 14.0500 +0.1500)



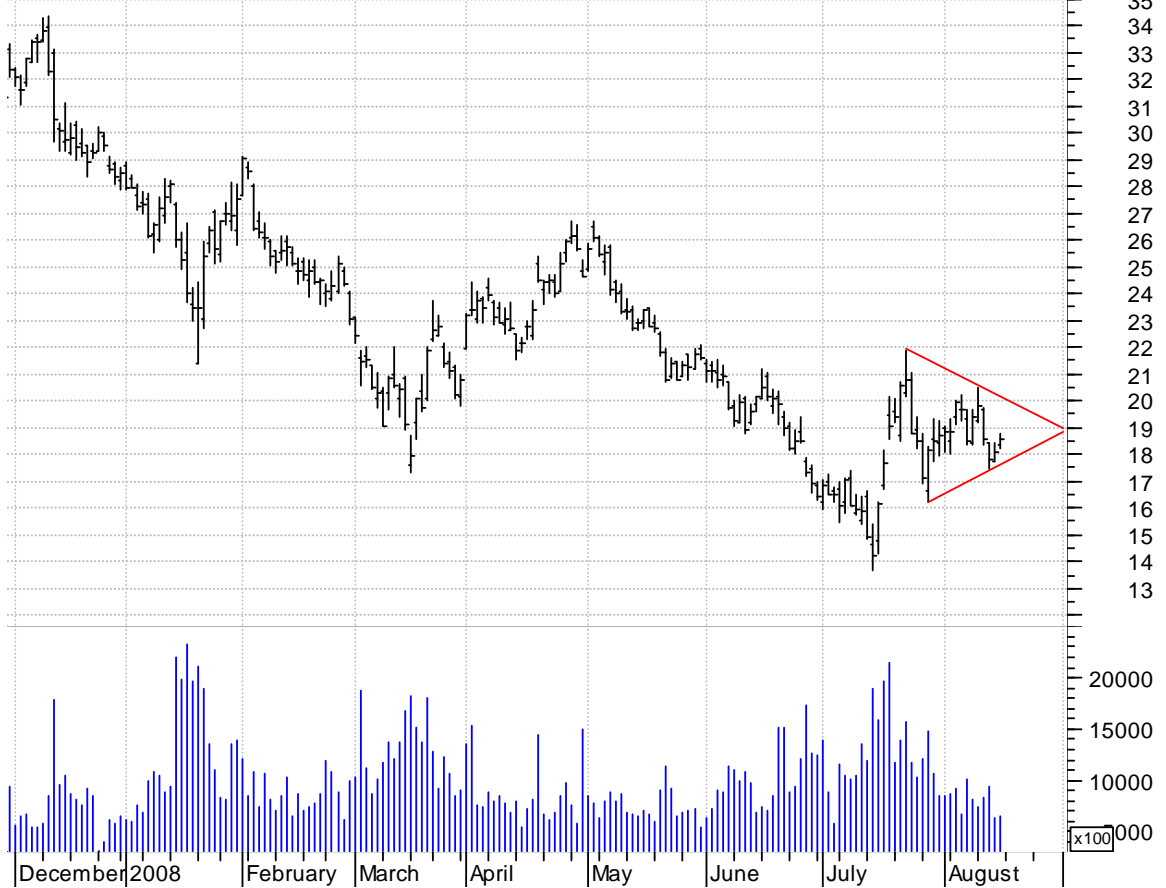
**AXE asc. tri. preceded by 'pole-like' move / buy on upside brkout on increased volume**

Anixter Intl:NYS (69.7700, 70.9400, 69.4300, 70.5000 +0.5200)

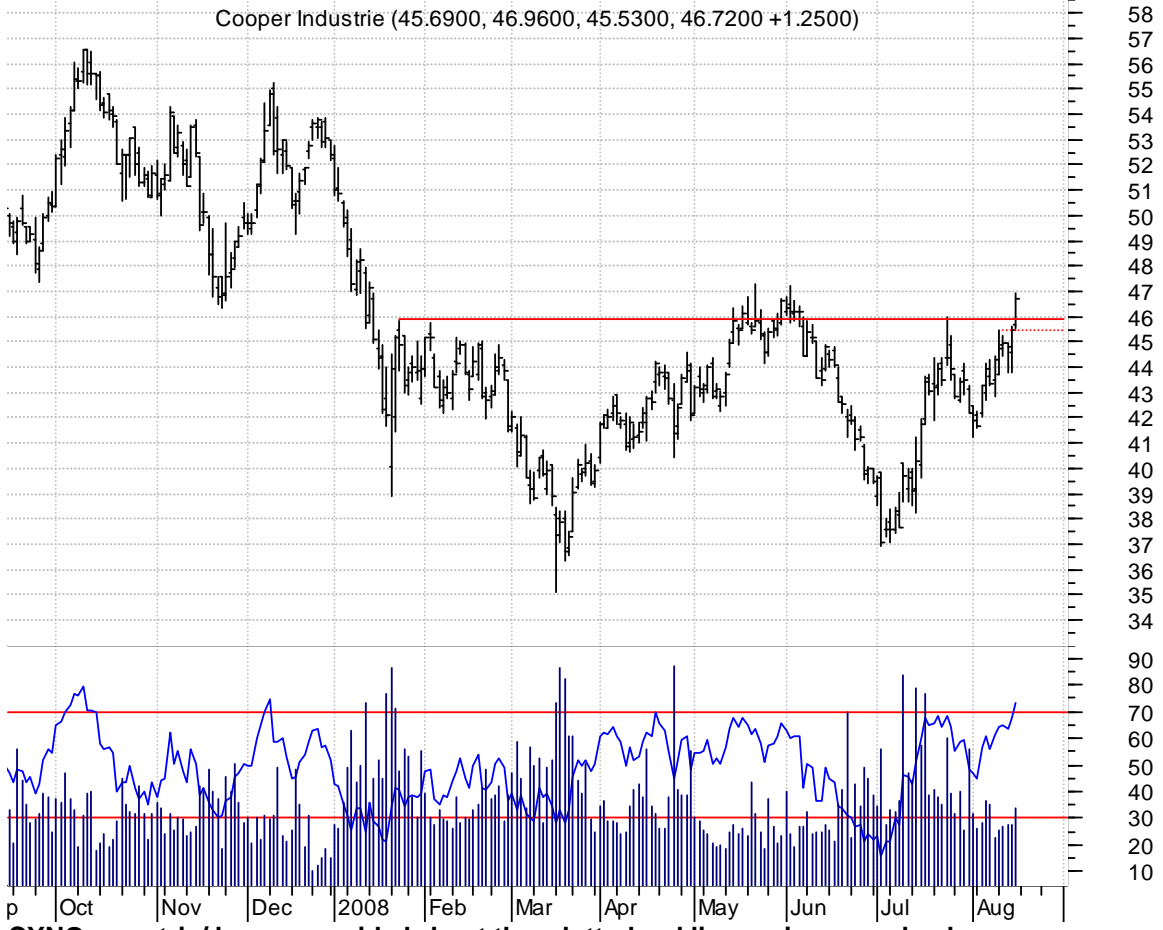


**C symm. tri. / buy on upside brkout on increased volume**

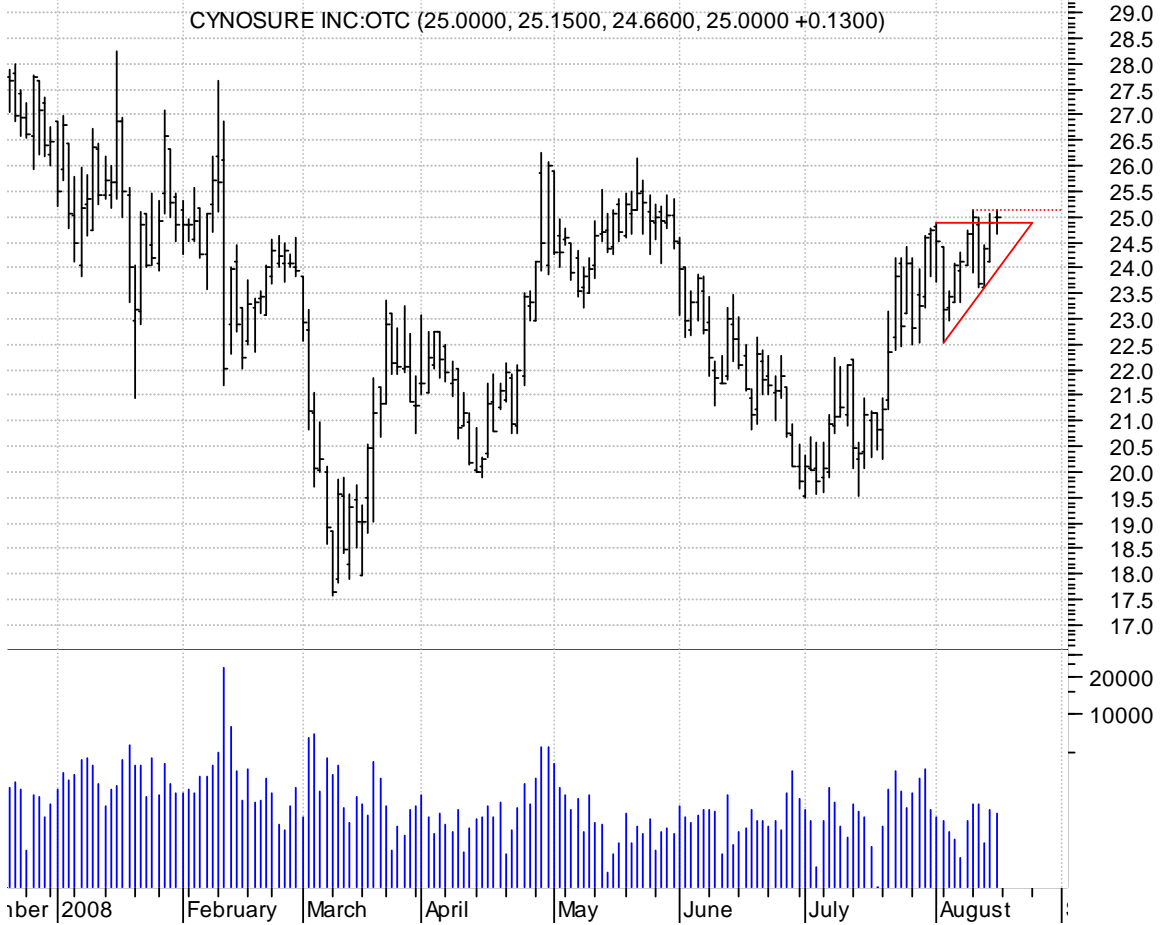
Citigroup Inc:NY (18.3600, 18.7500, 18.1900, 18.5500 +0.4700)



**CBE inv. h. & sh. / buy on upside continuation and use a move thru the dotted red line as a failure**

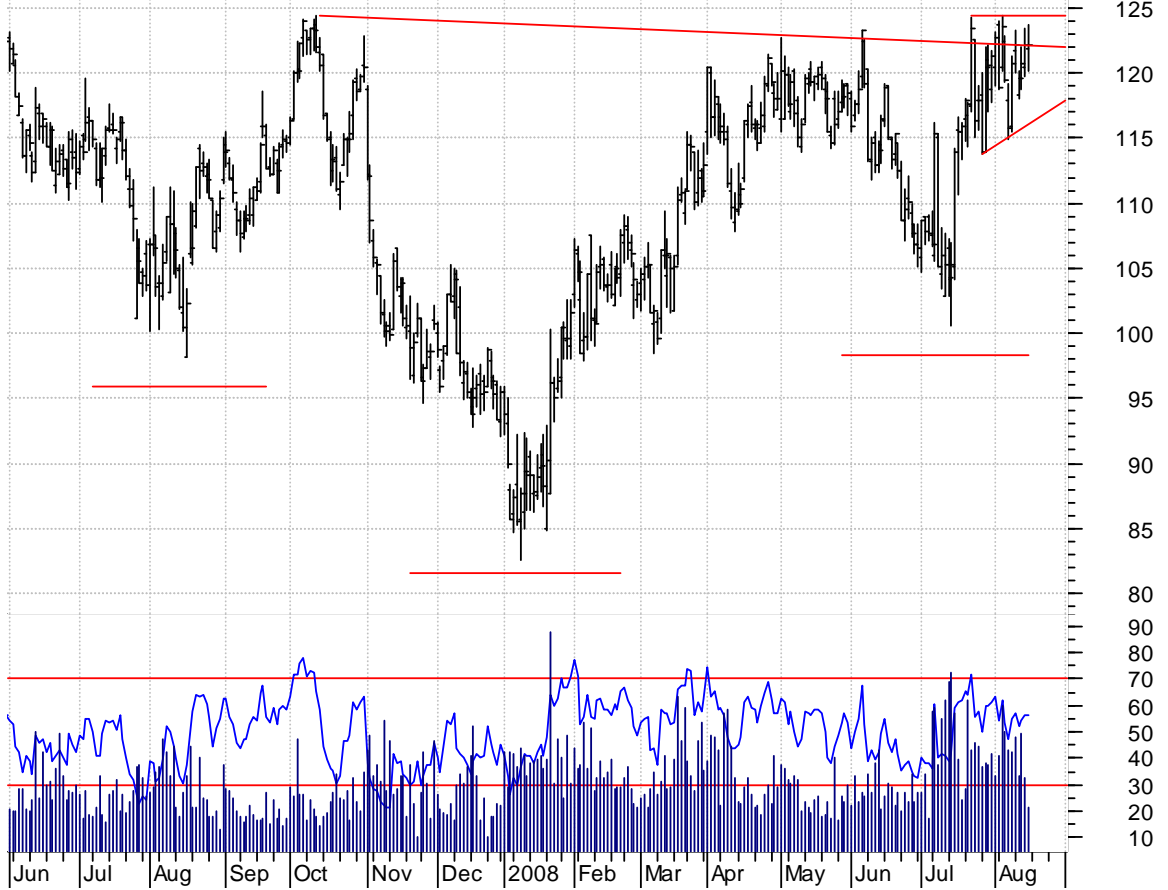


**CYNO asc. tri. / buy on upside breakout thru dotted red line on increased volume**



**ESS asc. tri. within larger inv. h. & sh. / buy on upside brkout on increased volume**

Essex Property T (121.850, 123.750, 120.130, 122.160 +0.0800)



**FINL symm. tri. / buy on upside brkout on increased volume**

Finish Line Inc: (10.7500, 10.8700, 10.4300, 10.7600 +0.0700)



**G bull pennant / buy on upside breakout on increased volume**

Genpact Ltd:NYSE (14.7700, 14.9100, 14.5200, 14.8900 +0.2500)



**GBCI symm. tri. preceded by 'pole-like' move / buy on upside breakout on increased volume**

Glacier Bancorp (23.1000, 23.2100, 22.4500, 23.0300 +0.2800)



**HAS asc. tri. / buy on upside brkout on increased volume**

Hasbro:NYSE (39.7400, 40.2900, 38.9500, 39.6900 +0.1300)



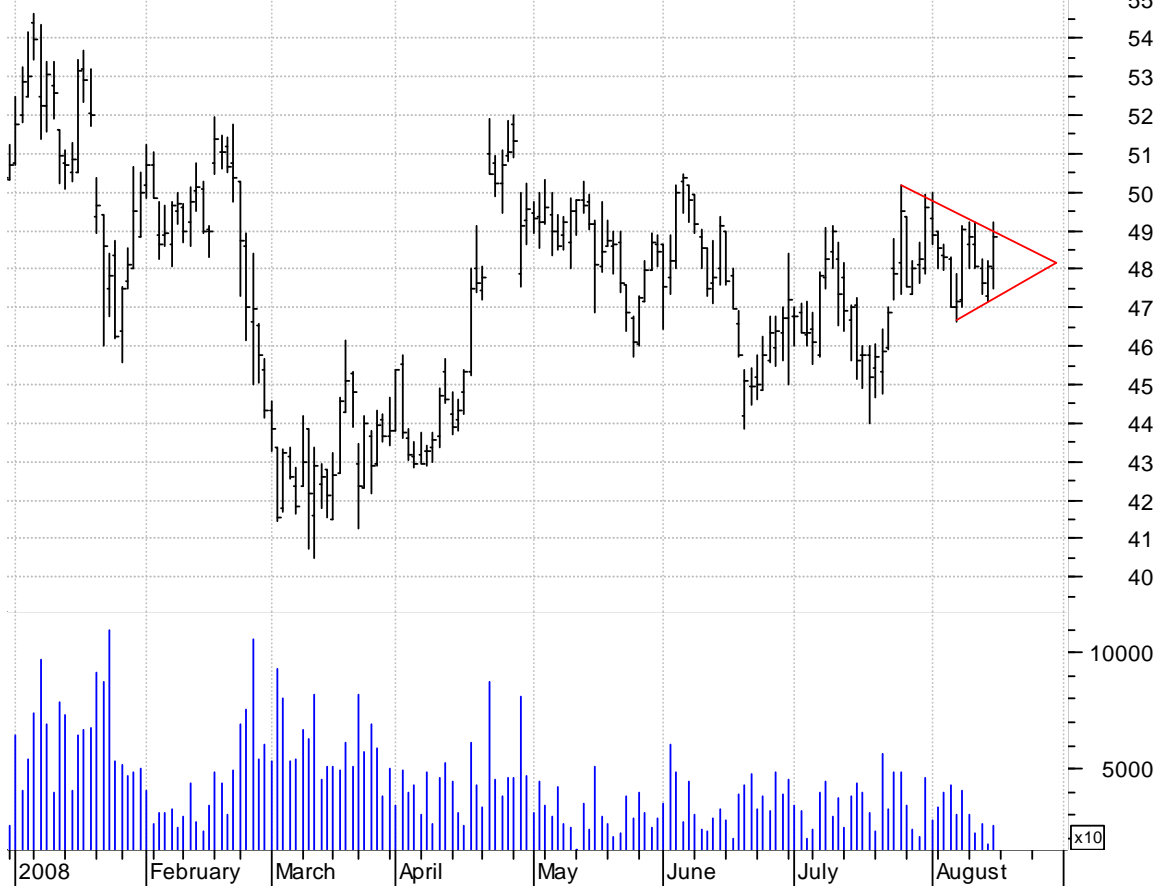
**LKQX symm. tri. preceded by 'pole-like' move / buy on upside breakout on increased volume**

LKQ CP:OTC (21.3200, 21.4600, 20.2600, 20.5100 -0.8900)



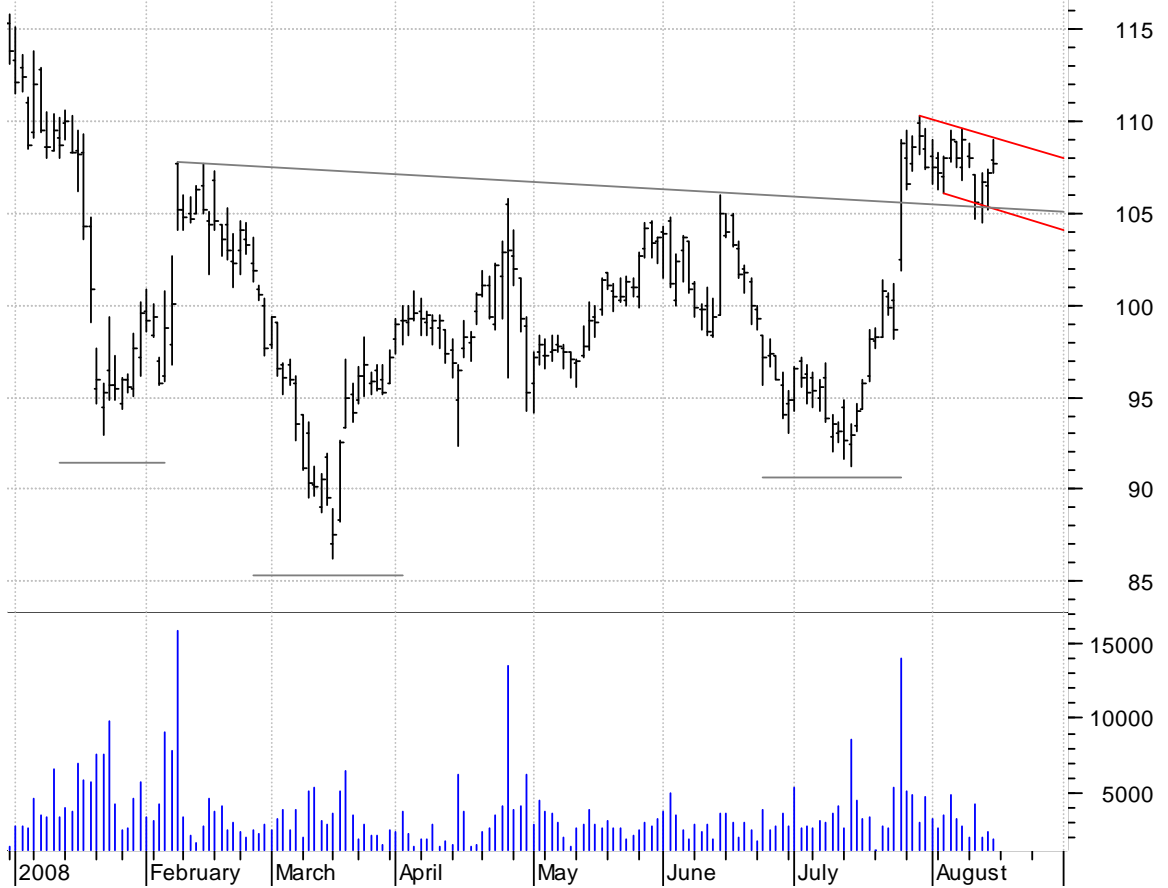
**MHS symm. tri. / buy on upside brkout on increased volume**

MEDCO HEALTH SOL (48.0000, 49.2200, 47.5100, 48.8300 +0.7800)



**MTD bullish flag / buy on upside brkout on increased volume**

Mettler Toledo I (107.850, 108.990, 107.210, 107.680 +0.4900)





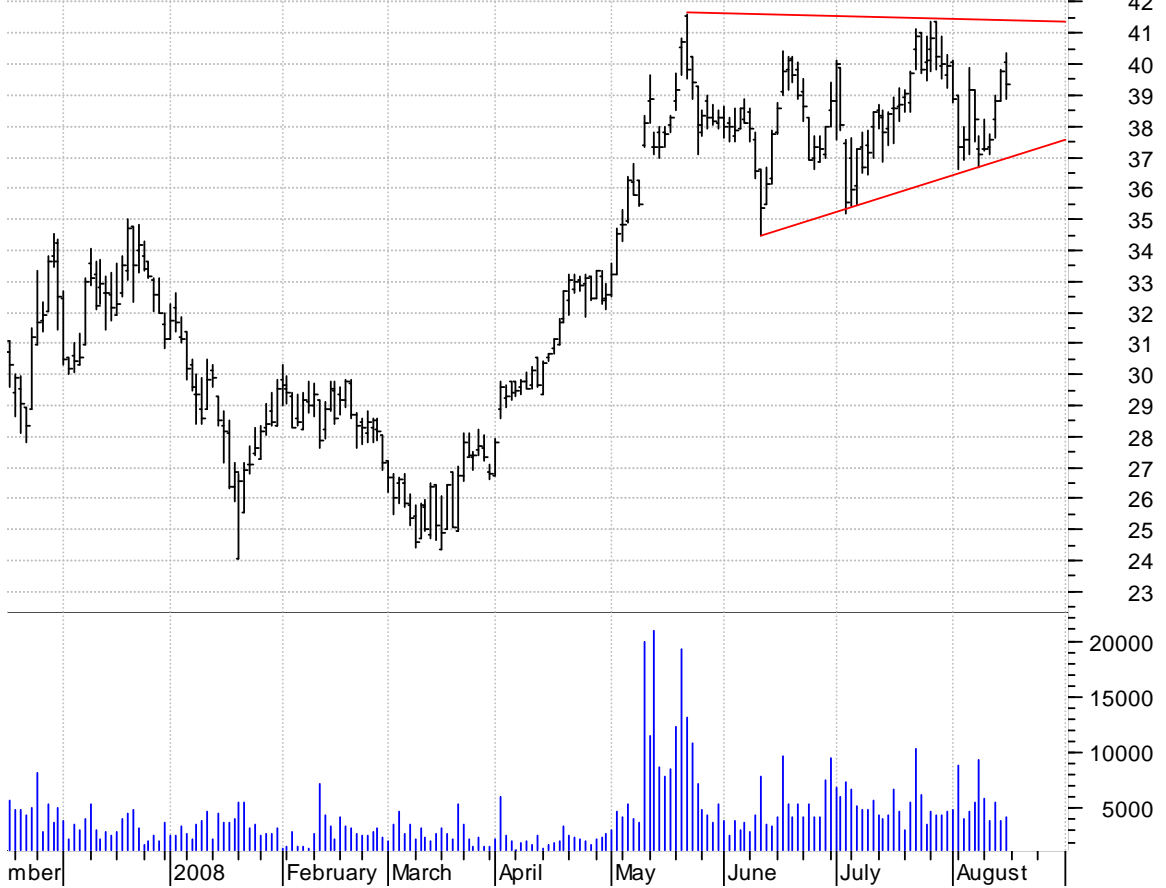
**MTG symm. tri. / buy on upside breakout on increased volume**

MGIC Investments (8.2500, 8.5800, 8.0300, 8.5700 +0.7700)



**NAT symm. tri. / buy on upside breakout on increased volume**

Nordic Amer Tank (40.0400, 40.3500, 38.8900, 39.3700 -0.4200)



**ODFL sloppy asc. tri. preceded by 'pole-like' move / buy on upside brkout on increased volume**



**PAS symm. tri. preceded by 'pole-like' move / buy on upside brkout on increased volume**



**PCX desc. tri. / sell on downside brkout on increased volume**

Patriot Coal Cor (53.0000, 53.4600, 49.5500, 52.6600 -1.3100)



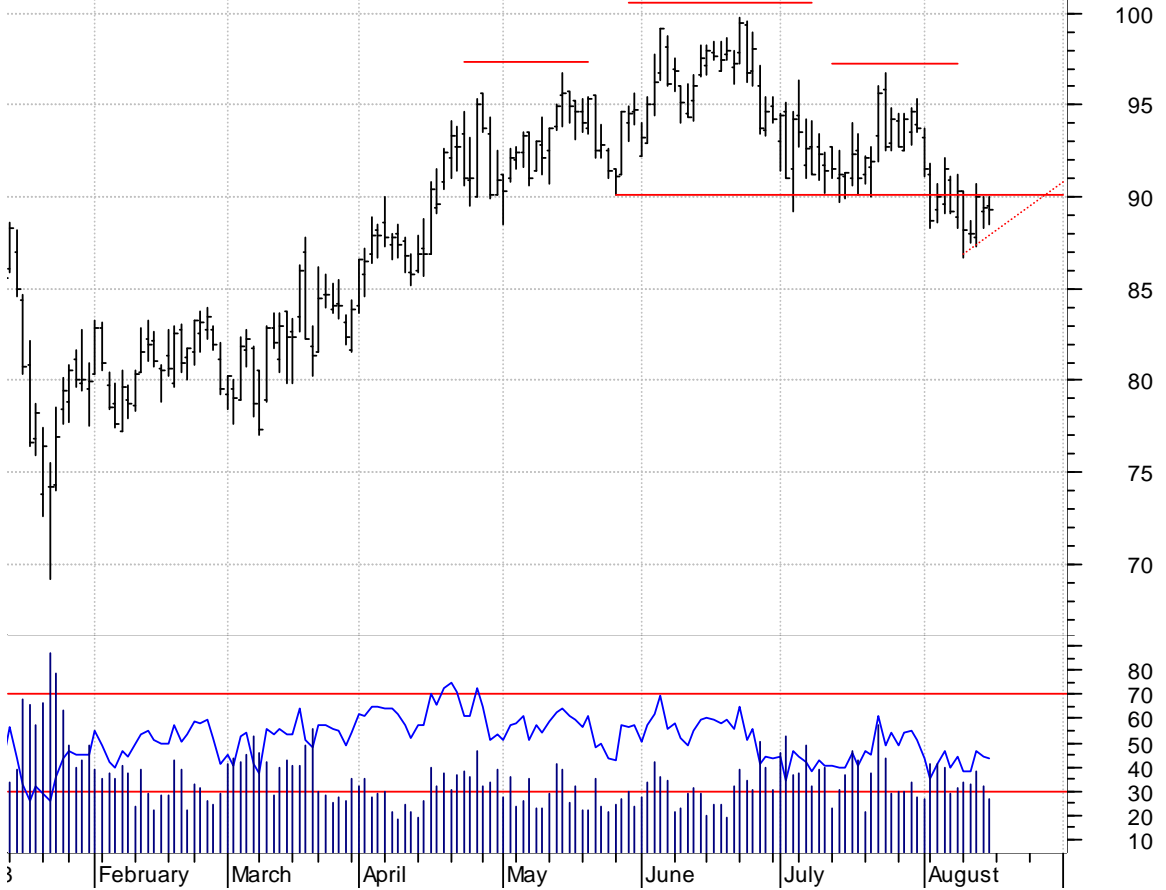
**PWR asc. tri. / buy on upside brkout on increased volume**

Quanta Services (34.0700, 34.2500, 33.0900, 33.3300 -0.6100)



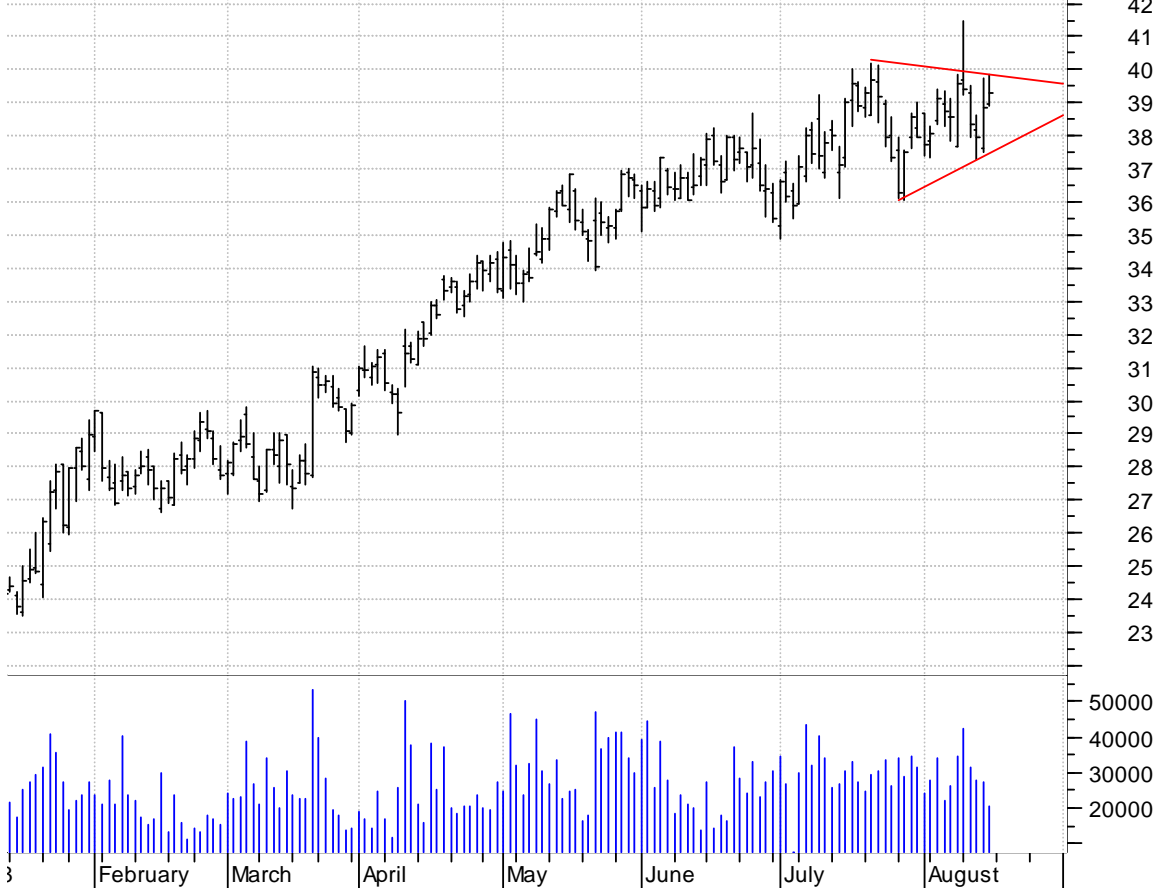
**PX h. & sh. / sell on downside brkout thru dotted red line on increased volume**

Praxair Inc:NYSE (89.4700, 90.0100, 88.4500, 89.2700 -0.1700)



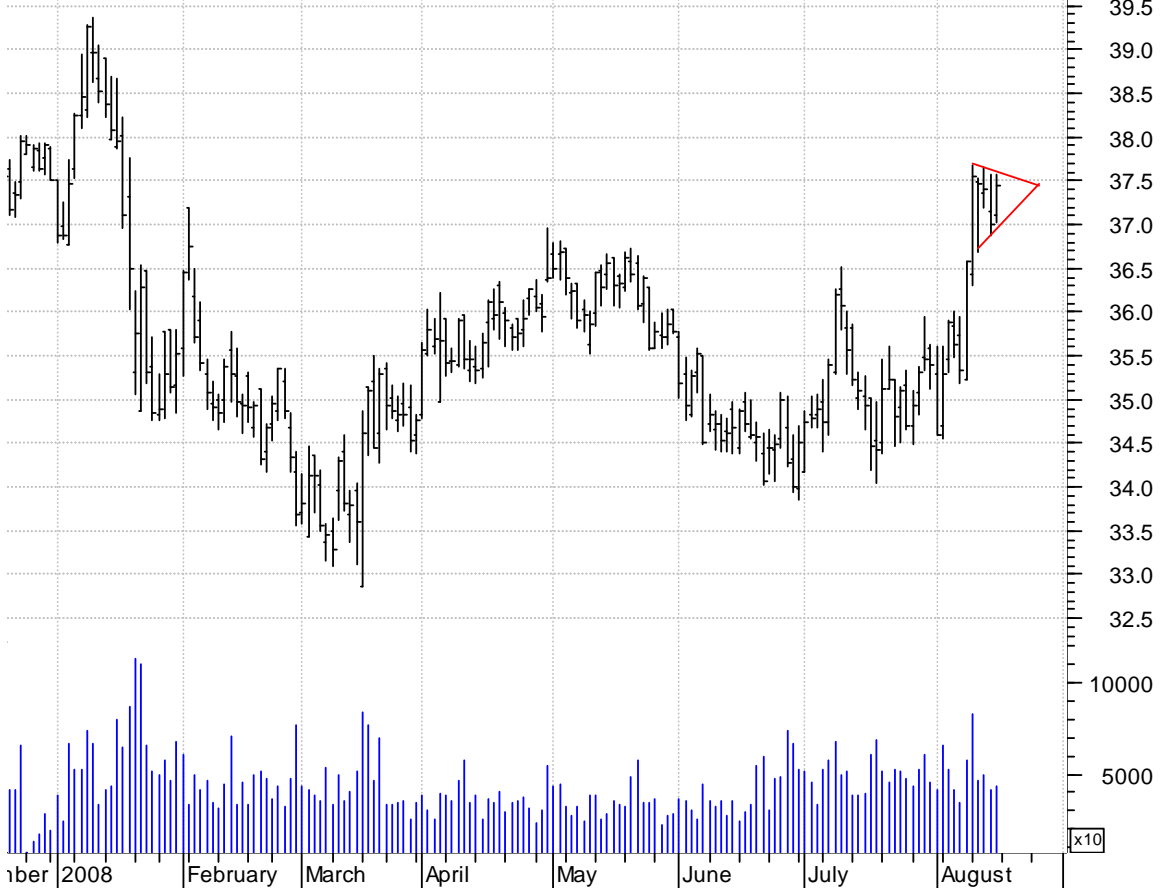
**ROST sloppy symm. tri. / buy on upside brkout on increased volume**

Ross Stores:OTC (38.9500, 39.8300, 38.9300, 39.3200 +0.4500)



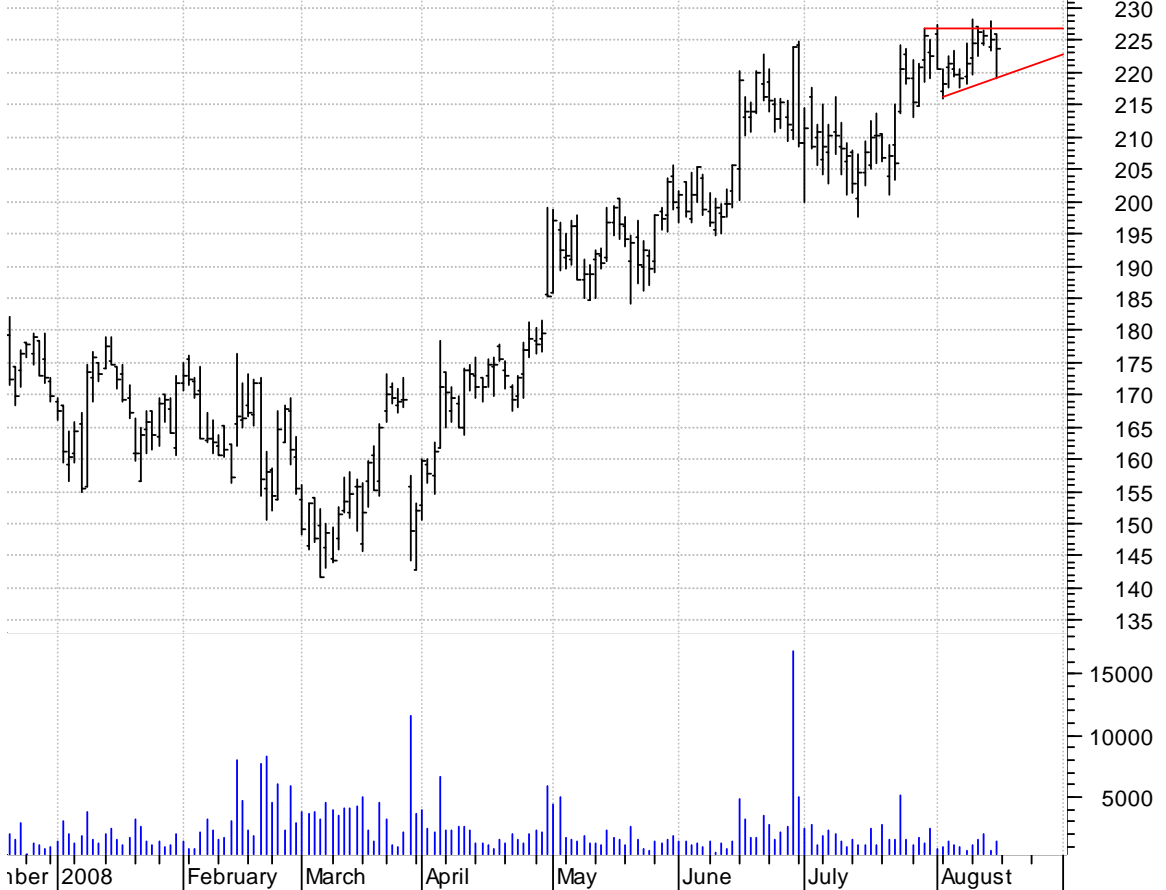
**SO bull pennant / buy on upside breakout on increased volume**

Southern Co.:NYSE (37.1000, 37.5800, 37.0300, 37.4400 +0.4400)



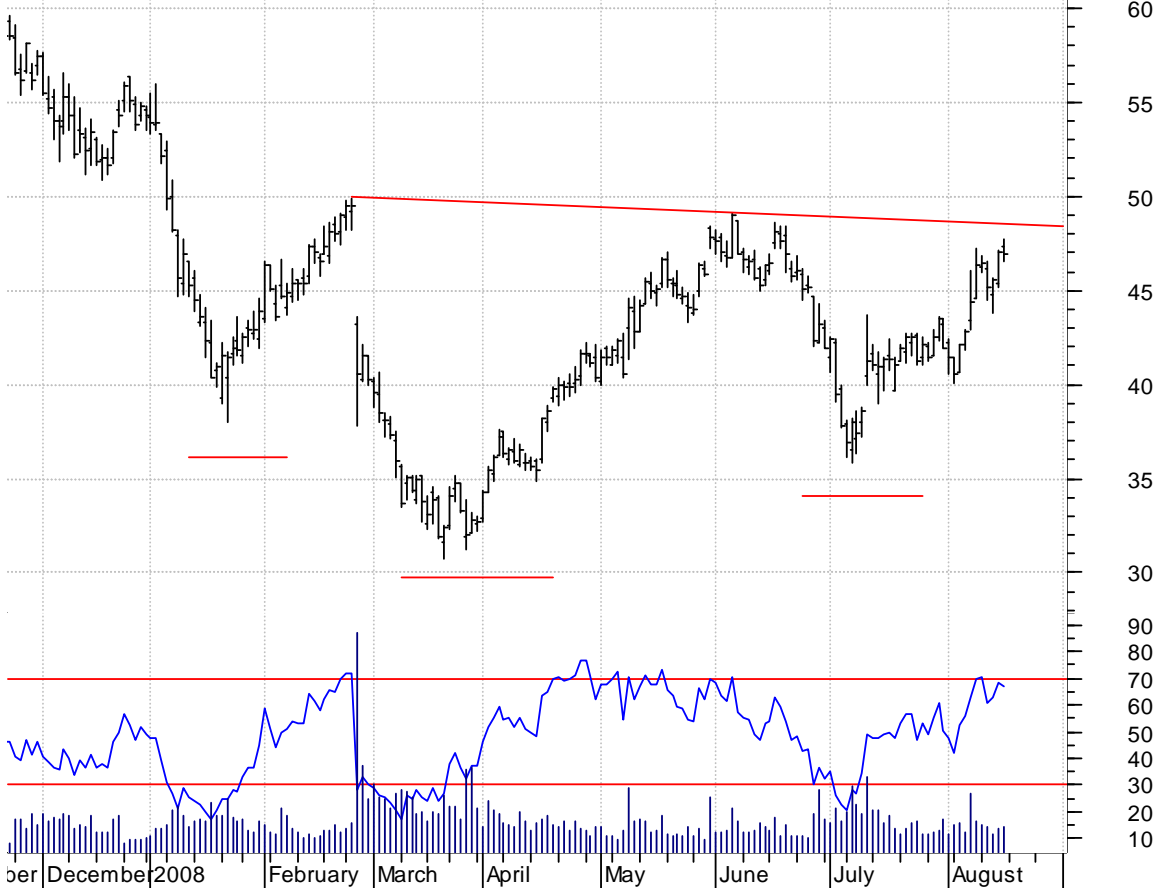
**STRA asc. tri. / buy on upside breakout on increased volume**

Strayer Educatio (225.990, 225.990, 219.140, 223.570 -1.7100)



**URS inv. h. & sh. / buy on upside breakout on increased volume**

URS Cp:NYSE (47.3700, 47.7500, 46.5600, 46.9100 -0.1300)



**USNA symm. tri. / buy on upside breakout on increased volume**

USANA Health Sci (34.4600, 35.0800, 33.1800, 34.5200 +0.7400)



**chartpatterns.com**  
Chart Pattern Analysis for Timing the Markets

[KMatras@aol.com](mailto:KMatras@aol.com)