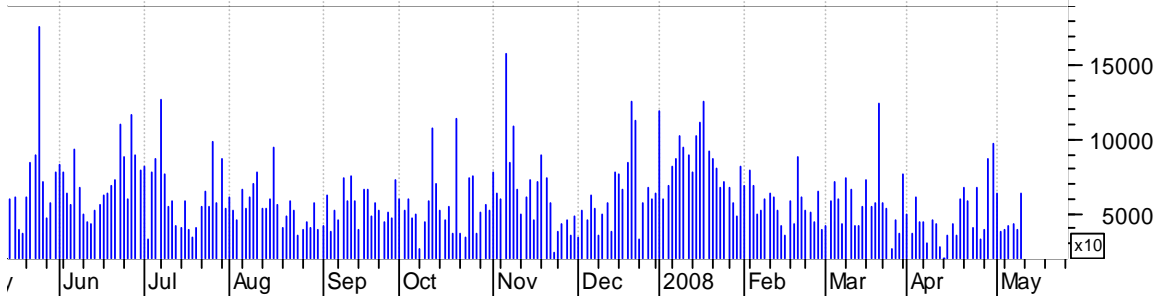


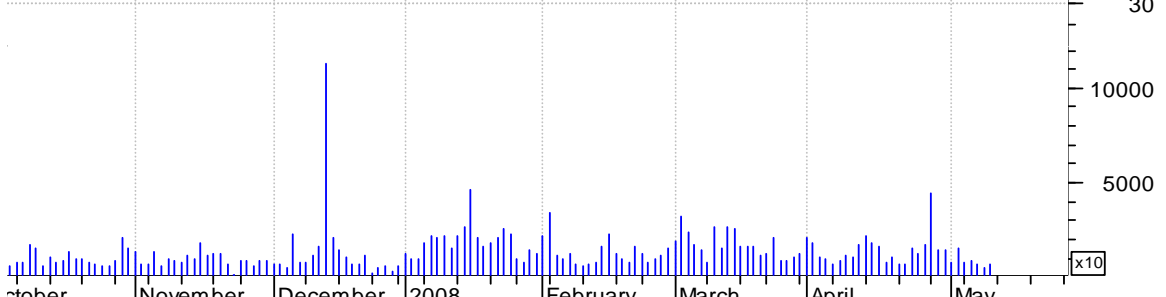
**ADM asc. tri. / buy on upside brkout on increased volume**

Archer-Daniels M (44.0200, 44.1300, 42.1700, 42.6800 -1.8800)



**BEAV symm. tri. / buy on upside brkout on increased volume**

BE Aerospace Inc (39.5100, 40.0000, 38.5100, 39.1700 -0.8700)



### CHKP bullish flag / buy on upside brkout on increased volume

Check Point Soft (23.4000, 24.2100, 23.3200, 24.0300 +0.4100)

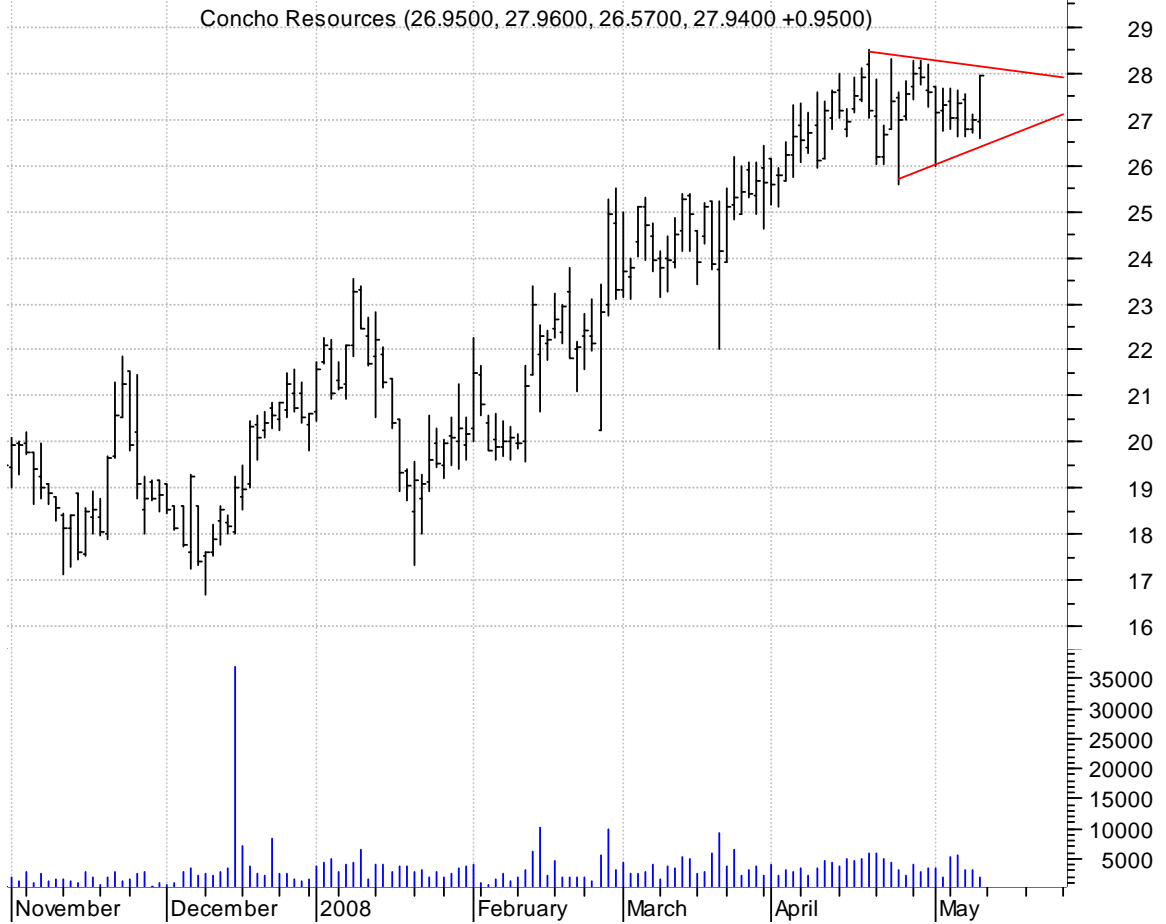


### COCO bullish flag / buy on upside brkout on increased volume

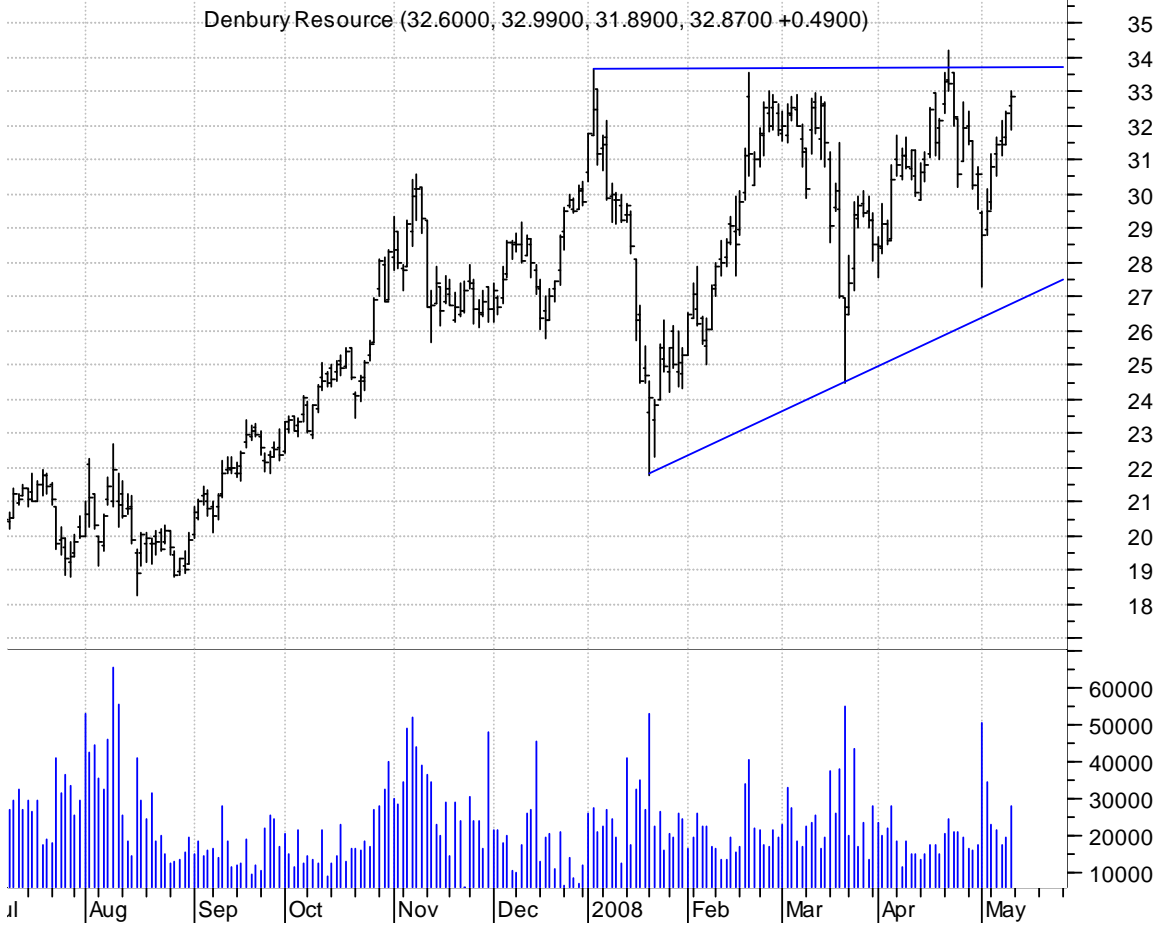
Corinthian Colle (11.2000, 11.5500, 11.0700, 11.4700 +0.4000)



**CXO symm. tri. / buy on upside breakout on increased volume**

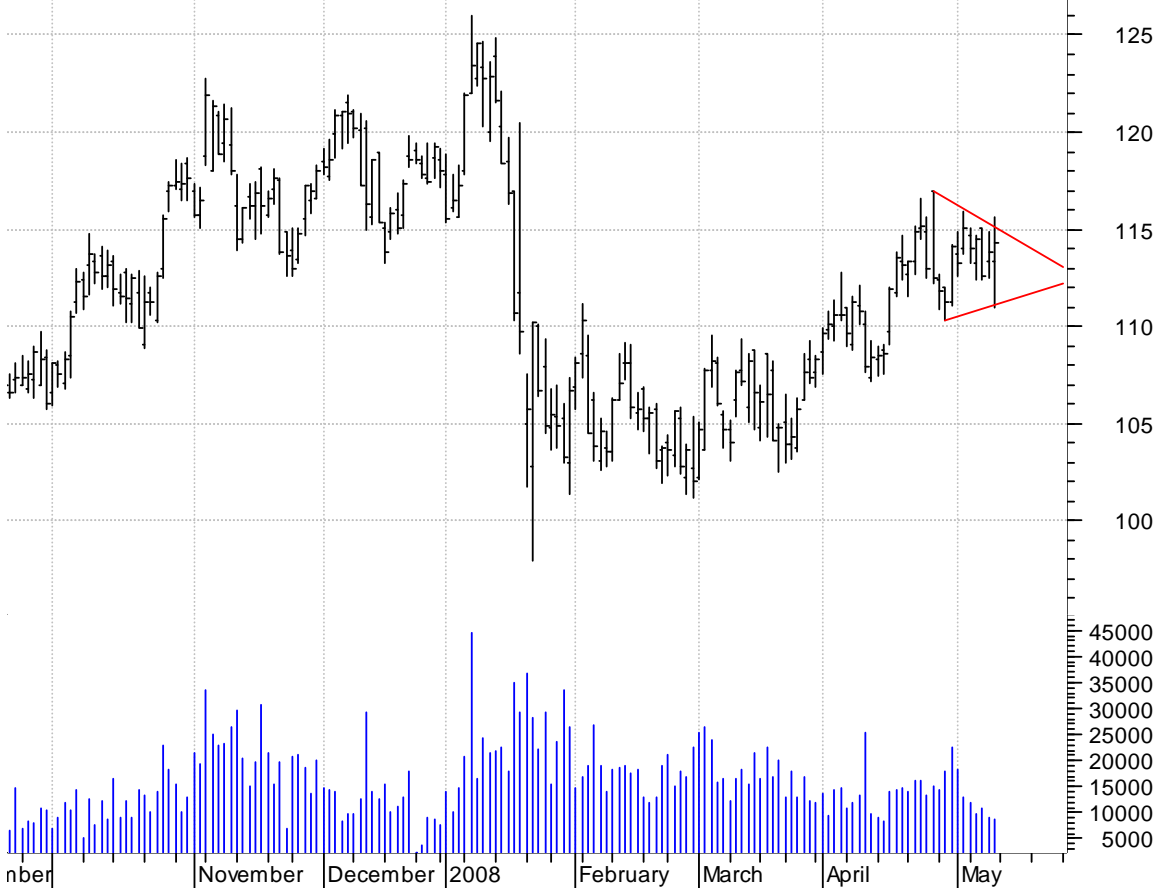


**DNR asc. tri. / buy on upside breakout on larger than normal volume**



**ETR symm. tri. / buy on upside breakout on increased volume**

Entergy Corp:NYS (113.370, 115.600, 110.970, 114.320 +0.520)



**GNTX asc. tri. preceded by 'pole-like' move / buy on upside breakout on increased volume**

Gentex Cp:OTC (18.7200, 18.9700, 18.6400, 18.7500 -0.1800)



**KEX asc. tri. / buy on upside brkout on increased volume**

Kirby Cp:NYSE (56.6500, 56.8900, 56.0000, 56.6800 +0.2400)



**LULU symm. tri. / buy on upside brkout on larger than normal volume**

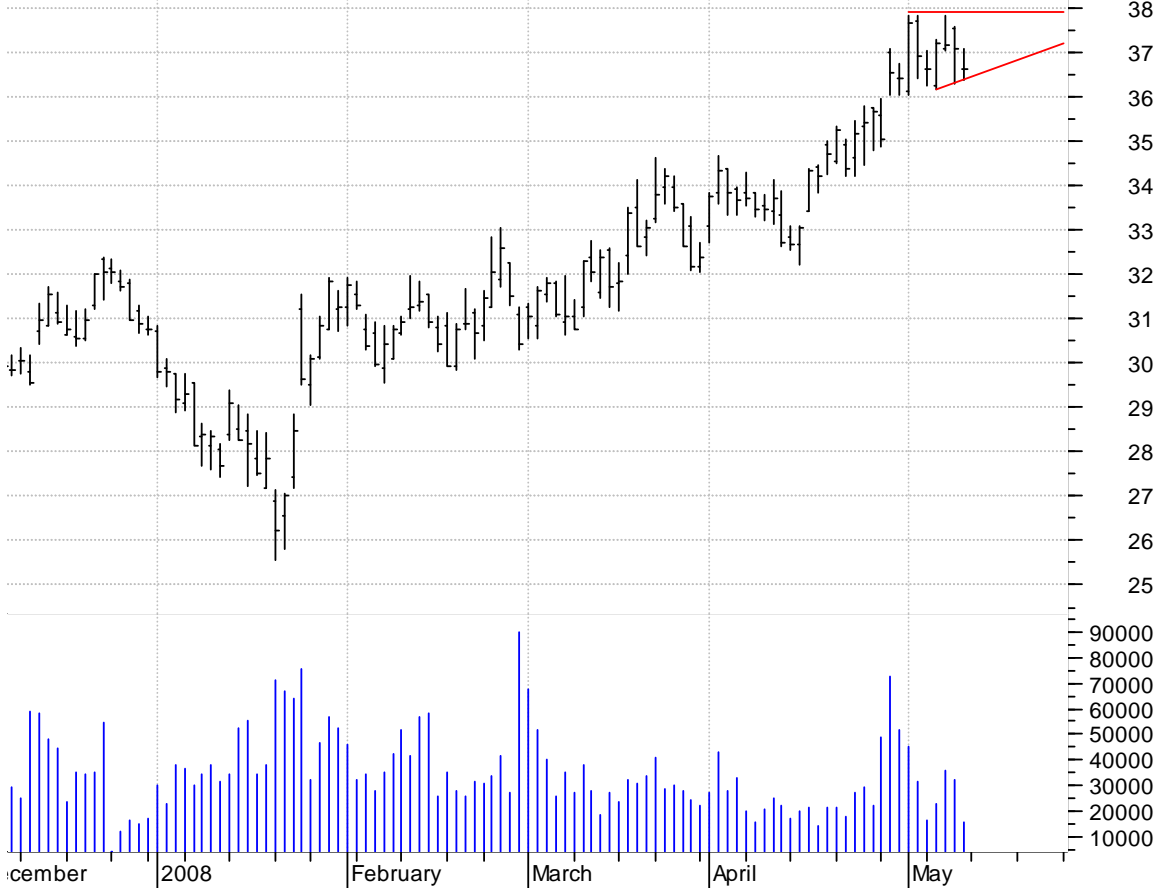
(there's also a bullish inverted head and shoulders -- can you see it in dotted grey?)

lululemon athlet (32.7000, 33.9000, 32.7000, 33.6500 +0.5000)



**MCHP asc. tri. / buy on upside brkout on increased volume**

Microchip Techno (36.6400, 37.0800, 36.3700, 36.6400 -0.4400)



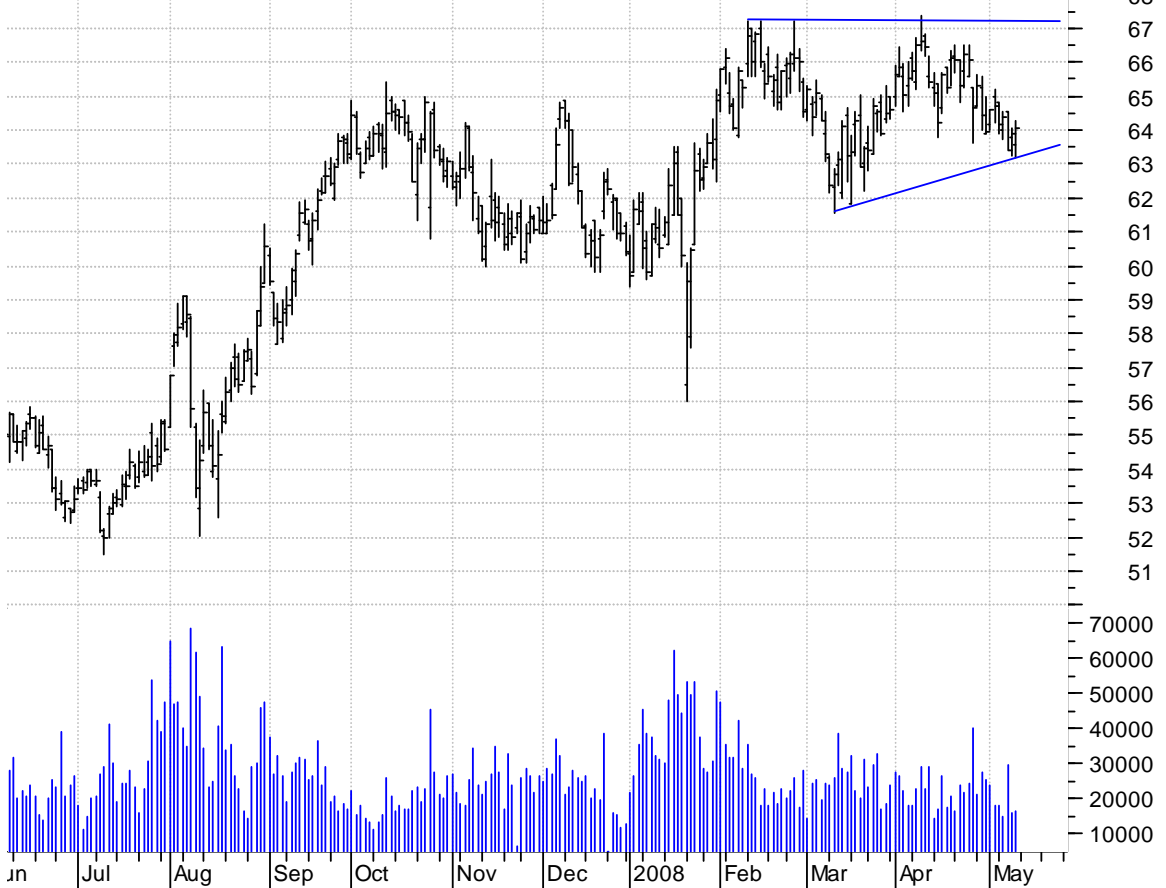
**PETM symm. tri. / buy on upside brkout on increased volume**

Petsmart Inc:OTC (22.8300, 23.5800, 22.8000, 23.2900 +0.1500)



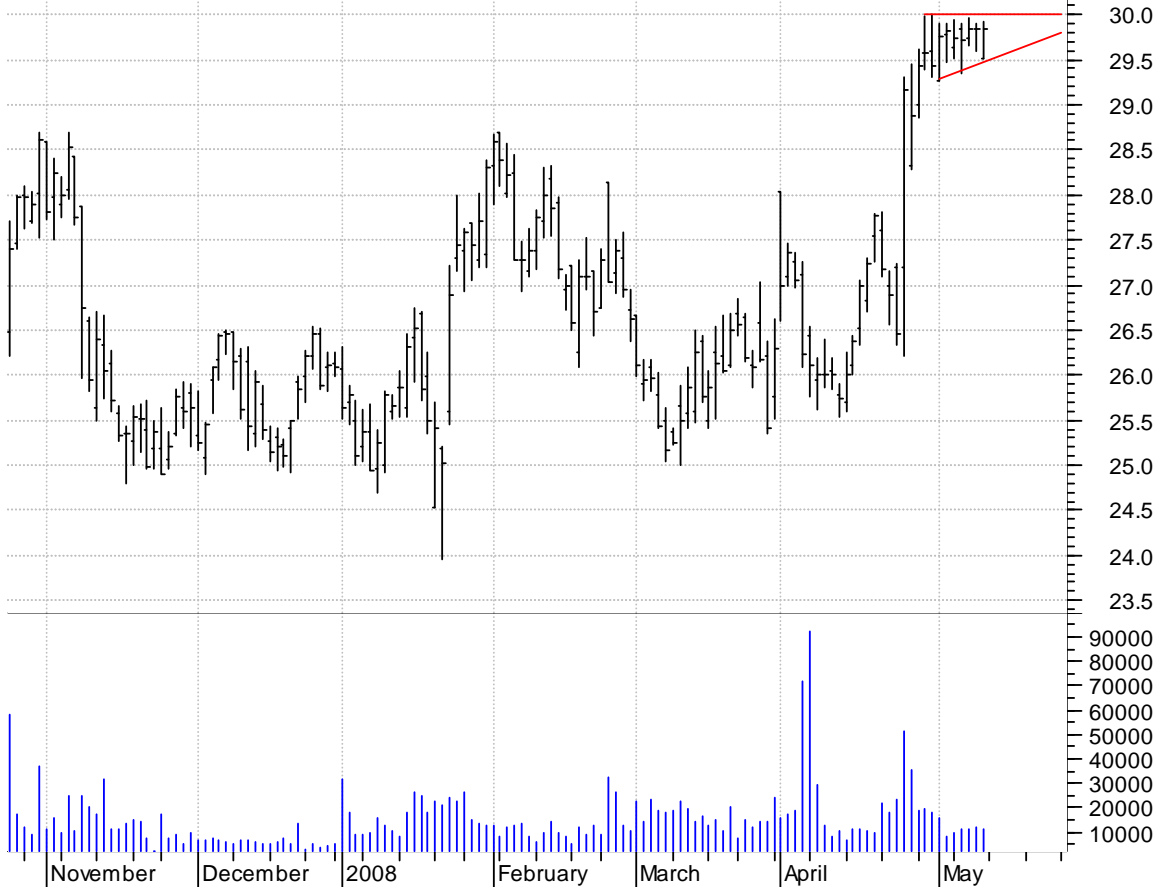
**RTN asc. tri. / buy on upside breakout on increased volume**

Raytheon Co Cl B (63.5500, 64.2500, 63.1600, 64.0500 +0.1400)



**SY asc. tri. preceded by 'pole-like' move / buy on upside breakout on increased volume**

Sybase:NYSE (29.5200, 29.9200, 29.5200, 29.8300 -0.0100)



**TESO bull pennant / buy on upside brkout on increased volume**

Tesco Corp:OTC (31.7000, 31.7000, 30.9400, 31.3500 -0.4100)



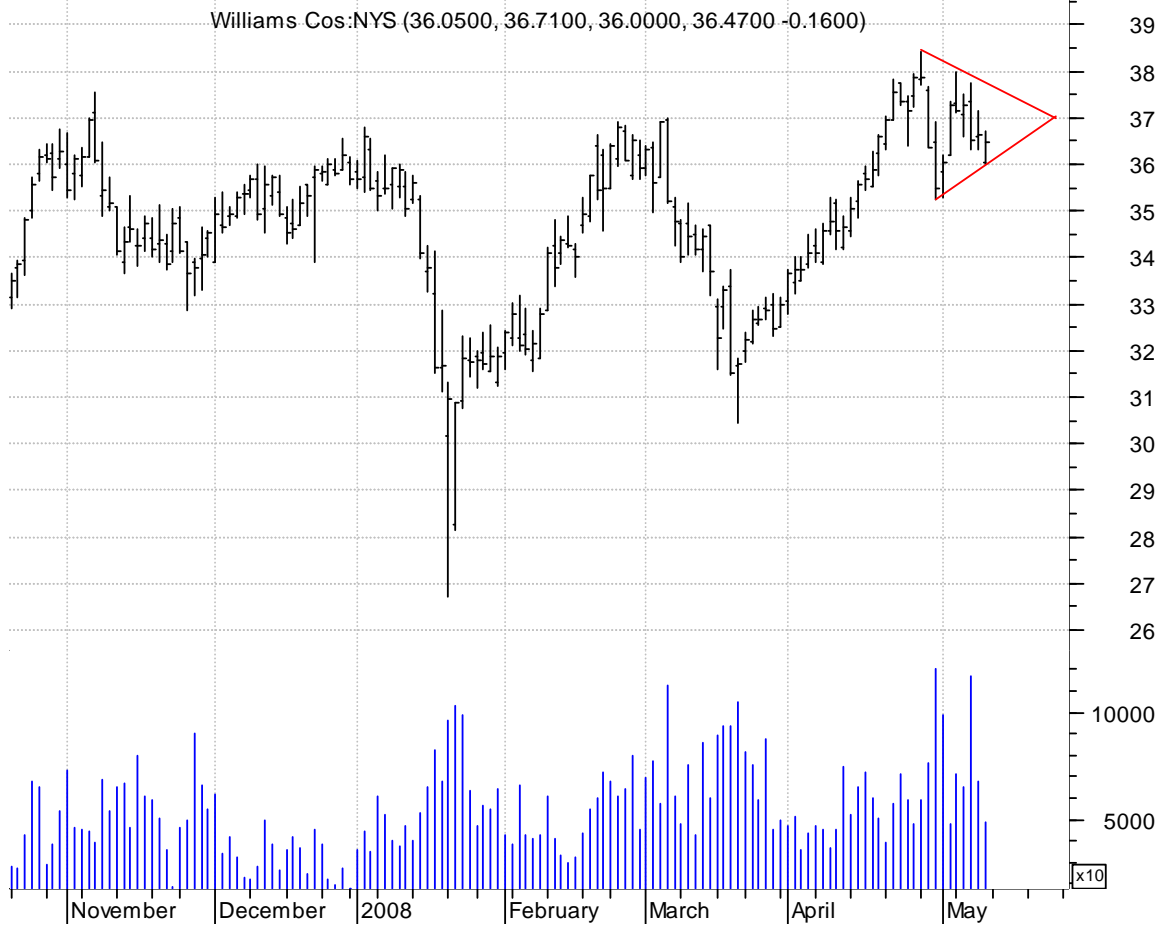
**TRMB falling wedge preceded by 'pole-like' move / buy on upside brkout on increased volume**

Trimble Navigati (33.2700, 33.6900, 32.7700, 33.2400 -0.3100)





### WMB symm. tri. / buy on upside breakout on increased volume



**chartpatterns.com**  
Chart Pattern Analysis for Timing the Markets

[KMatras@aol.com](mailto:KMatras@aol.com)