

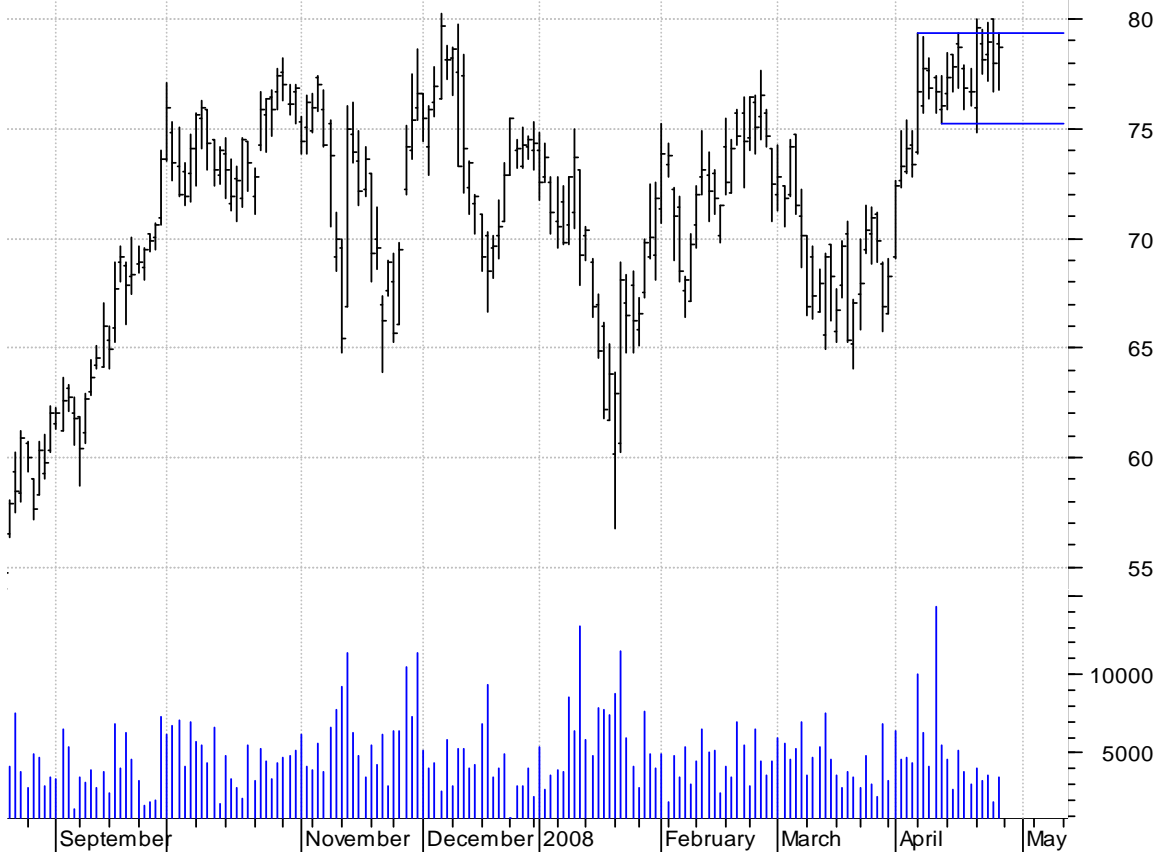
**ADM asc. tri. / buy on upside brkout on increased volume**

Archer-Daniels M (46.3100, 47.4400, 45.9800, 47.3100 +1.1800)



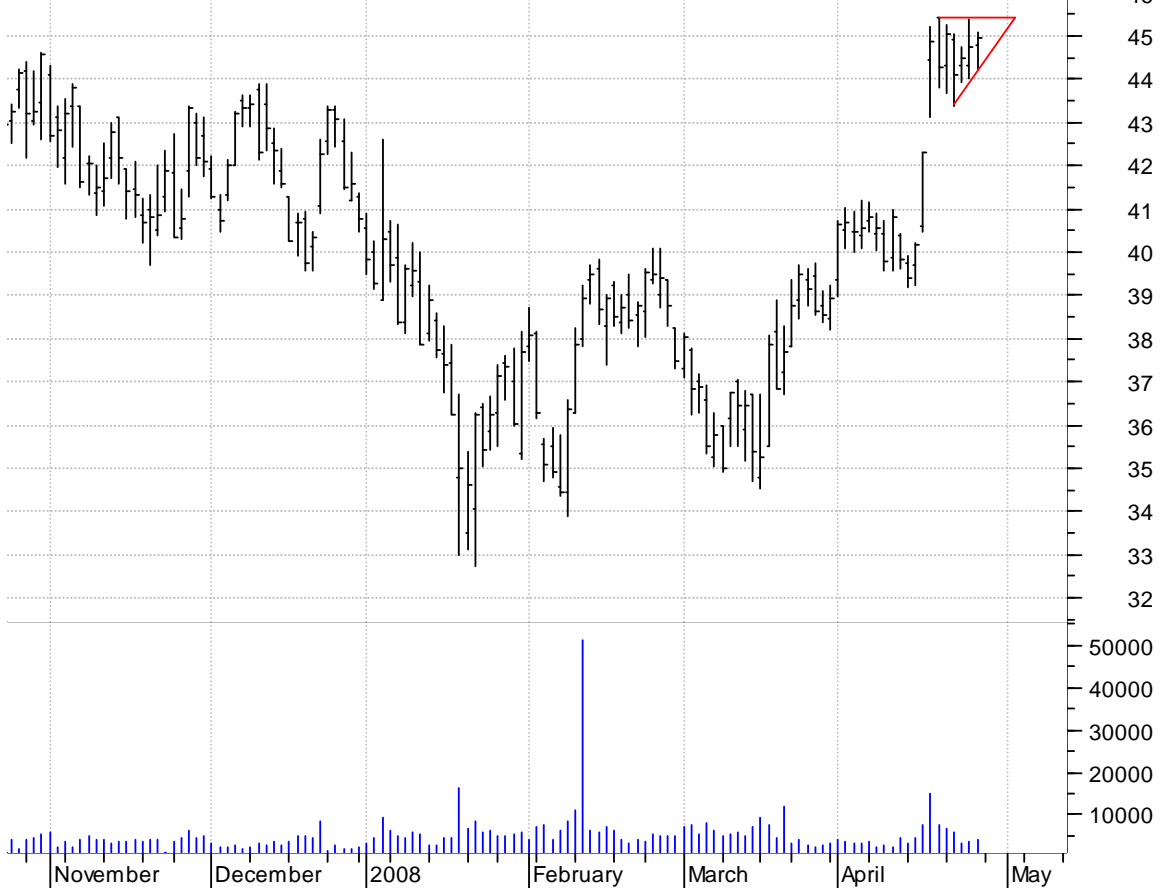
**ARA rectangle preceded by 'pole-like' move / buy on upside brkout on increased volume**

Aracruz Celulose (78.8500, 79.4000, 76.8000, 78.7200 +0.7500)



**ATR asc. tri. preceded by 'pole-like' move / buy on upside brkout on increased volume**

AptarGroup Inc:N (44.7800, 45.1000, 44.2200, 44.9500 +0.2000)

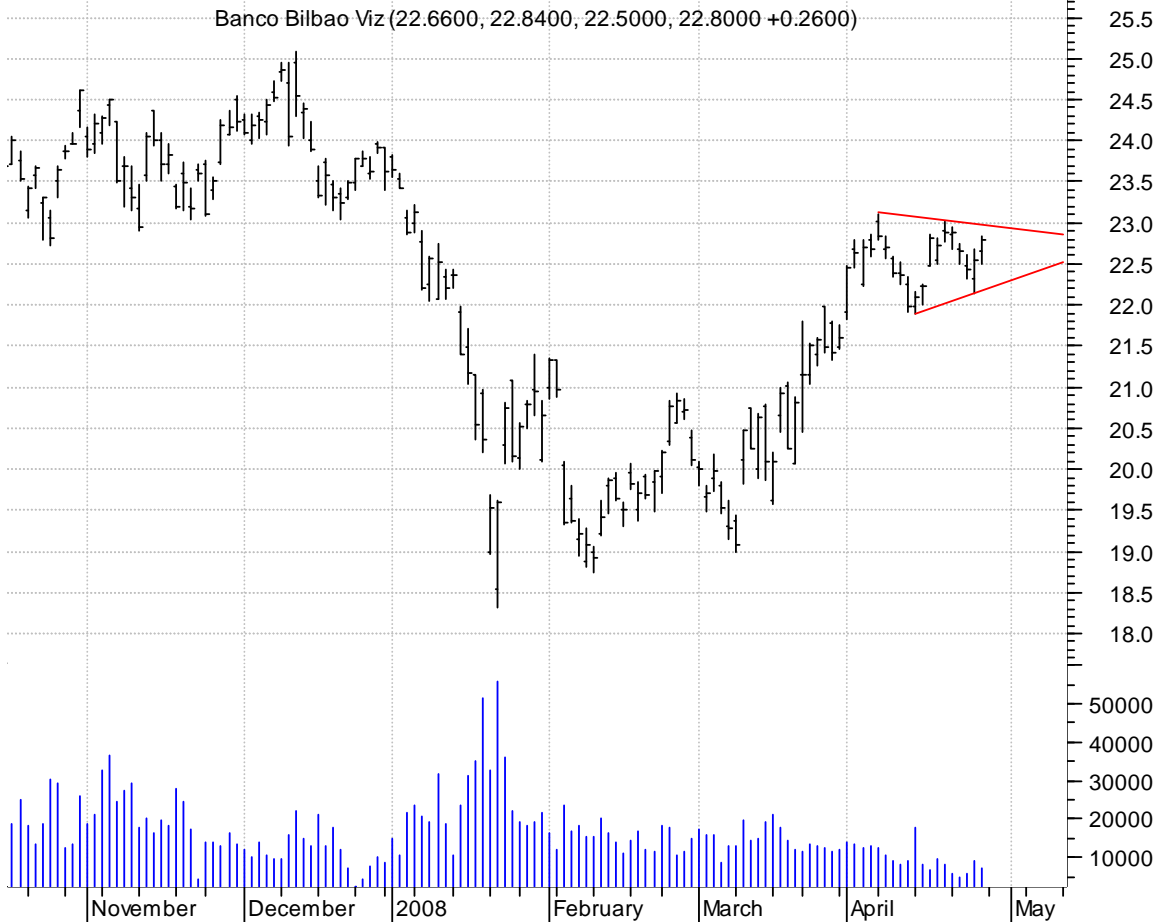


**BABY asc. tri. / buy on upside brkout on increased volume**

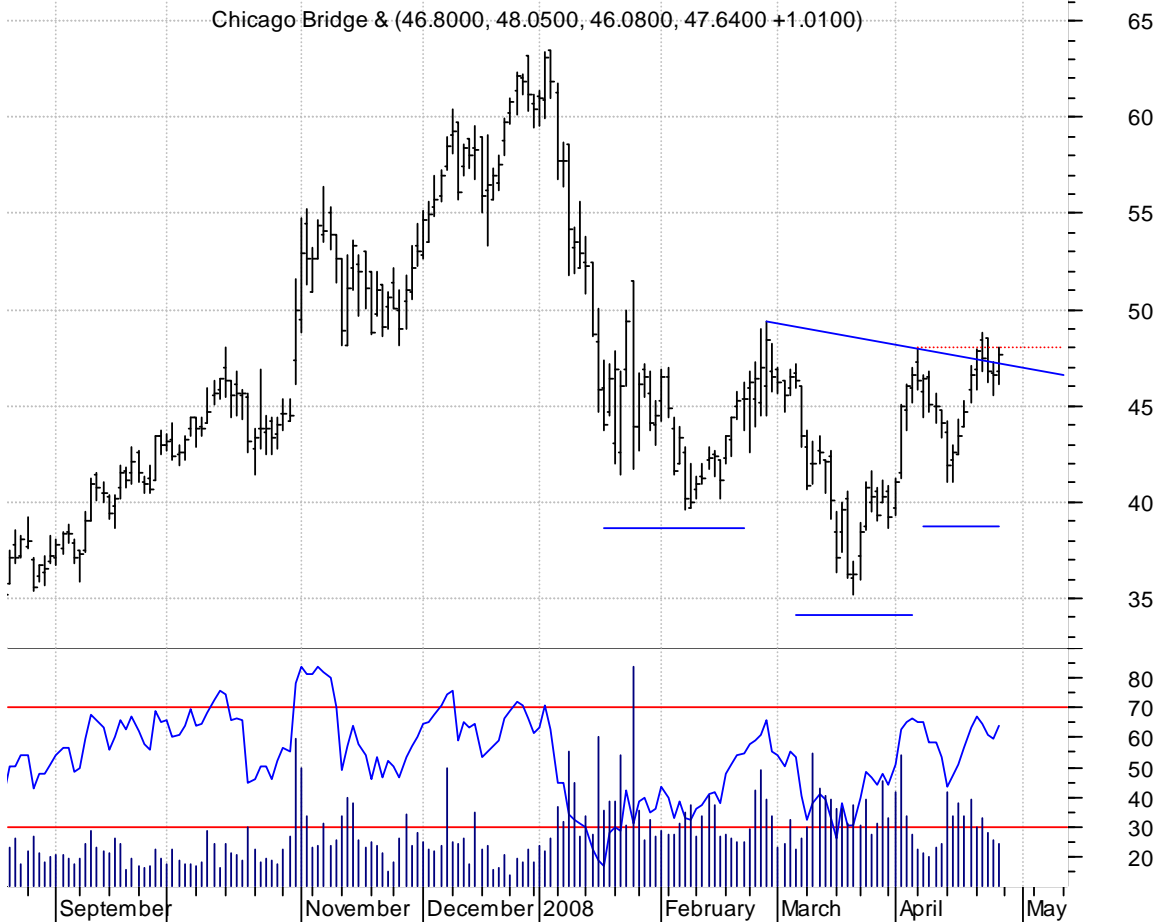
NATUS MEDICAL IN (19.3000, 19.6100, 19.0900, 19.1300 -0.2700)



**BBV symm. tri. / buy on upside brkout on increased volume**

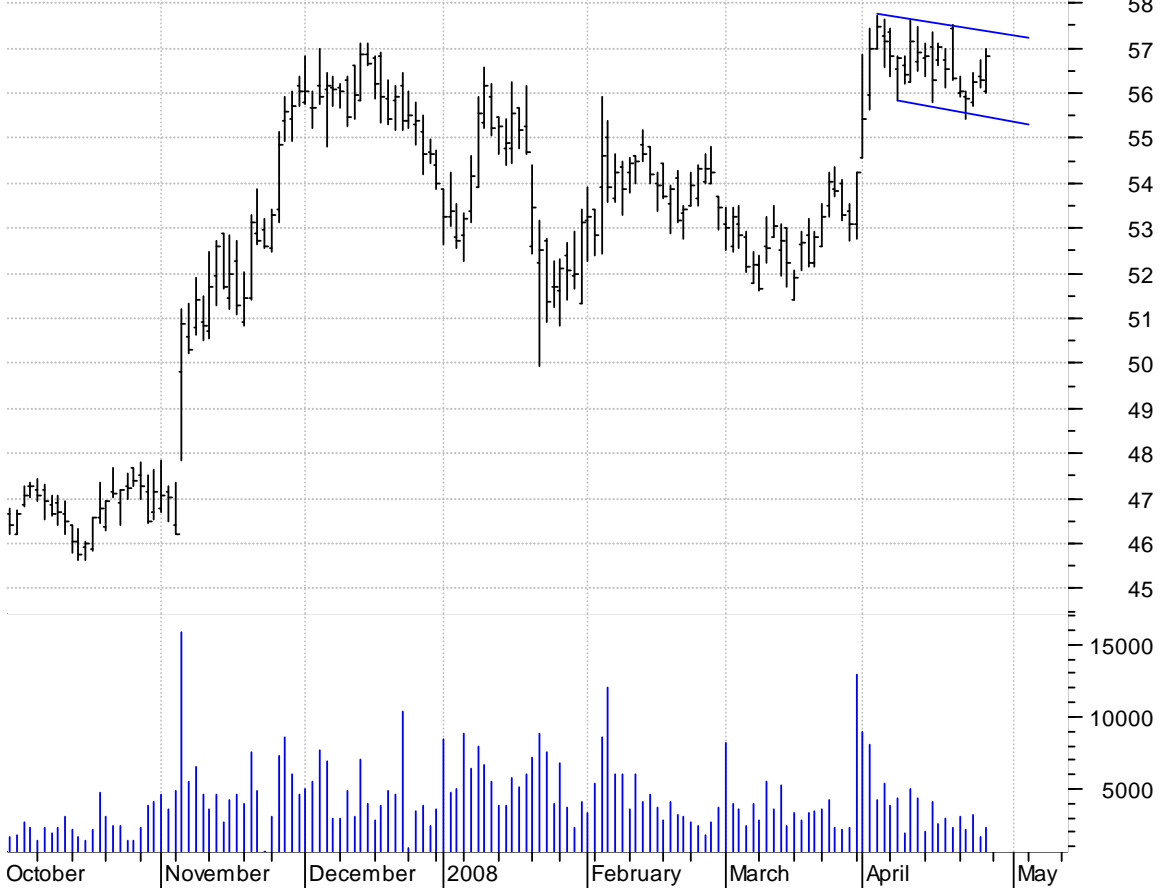


**CBI inverted head and shoulders / buy on upside brkout thru dotted red line on increased volume**



**CHD bull flag / buy on upside breakout on increased volume**

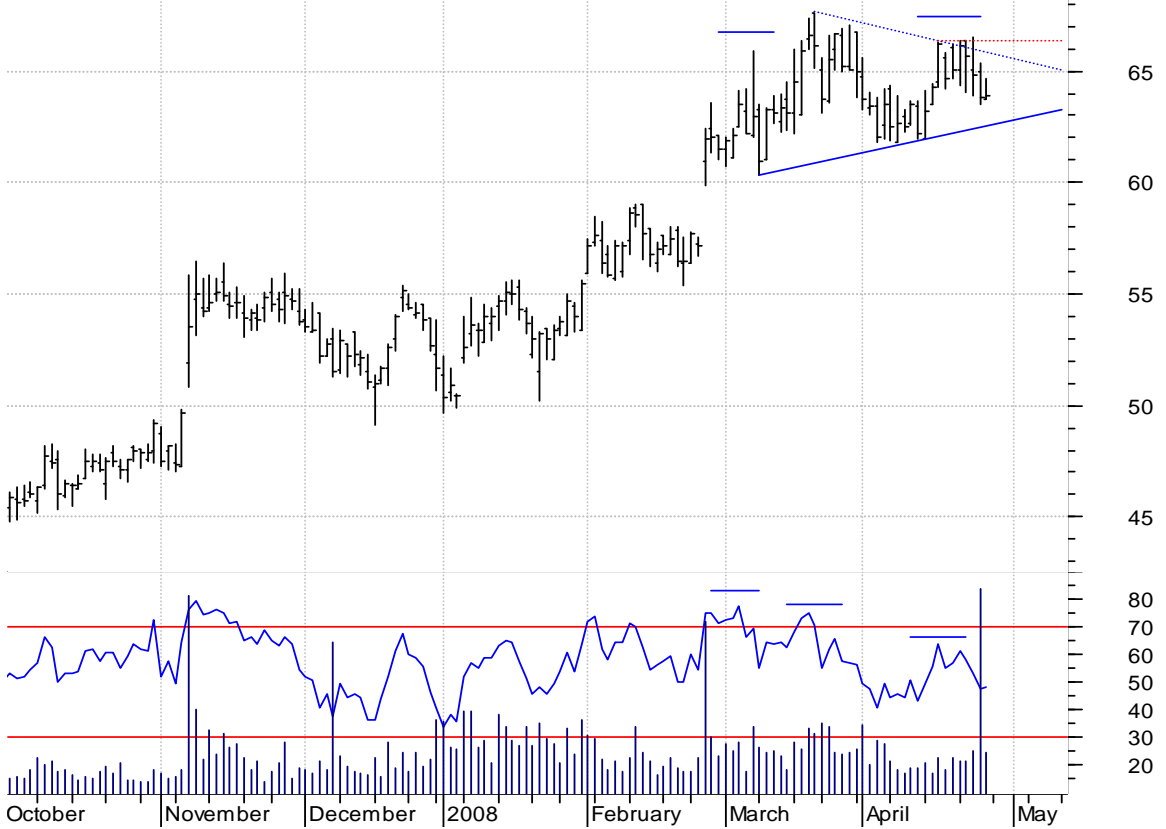
Church & Dwight (56.0300, 57.0000, 56.0000, 56.8300 +0.5400)



**CLHB head and shoulders / 1) sell on downside breakout or**

**2) buy on upside breakout thru dotted red line on increased volume  
(h. & sh. failures often times breakout sharply to the upside)**

Clean Harbors In (63.7600, 64.6400, 63.7500, 63.9000 +0.1000)



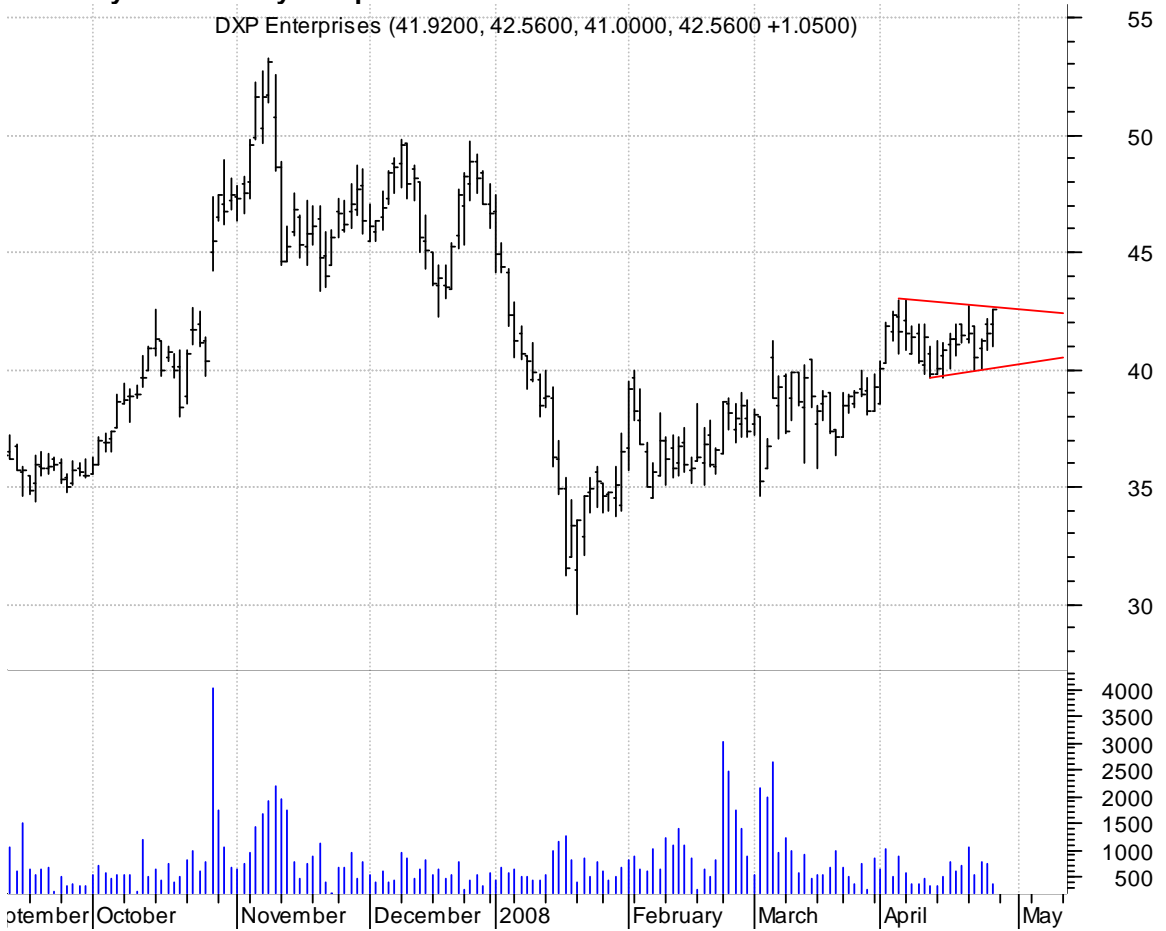
### CMCSA symm. tri. / buy on upside brkout on increased volume

Comcast Corp Cla (19.8800, 19.9000, 19.2800, 19.5300 -0.2500)

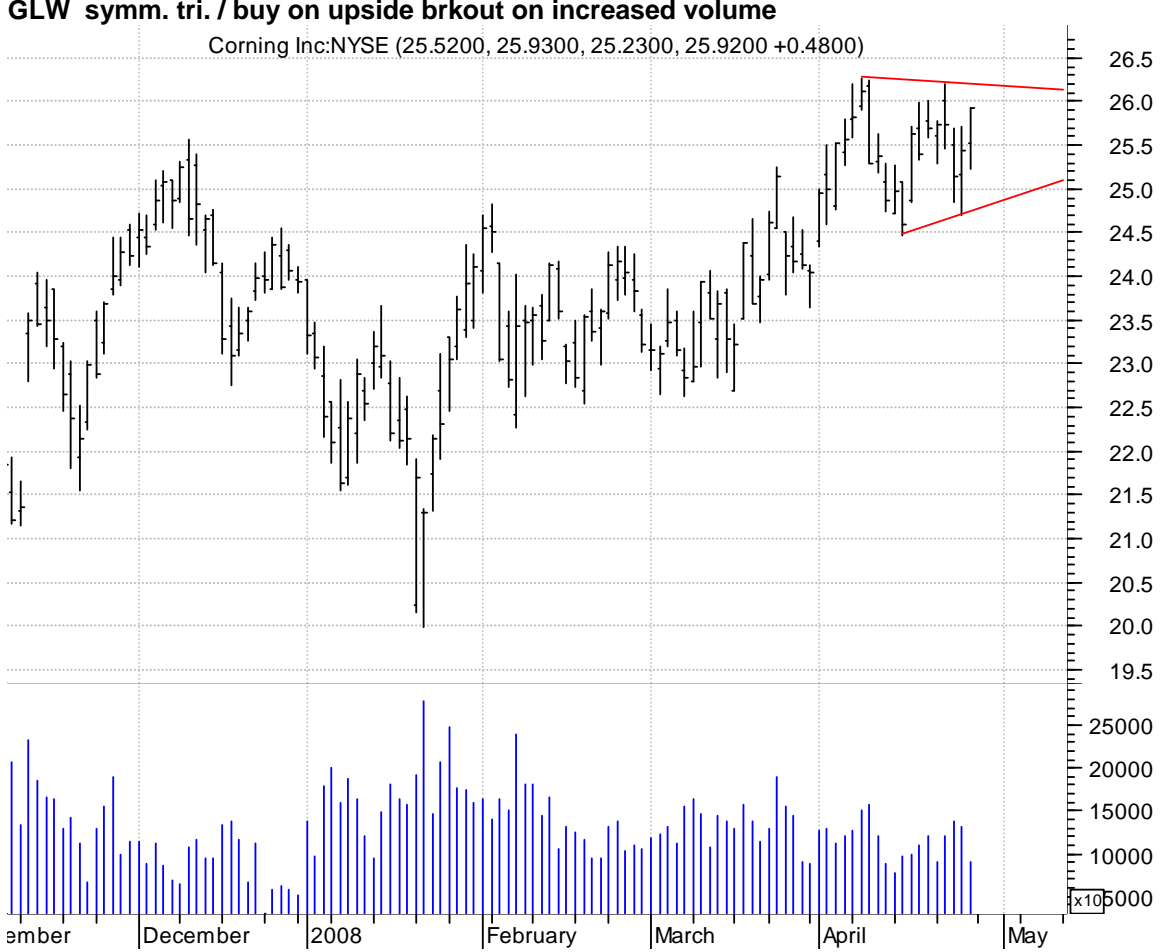
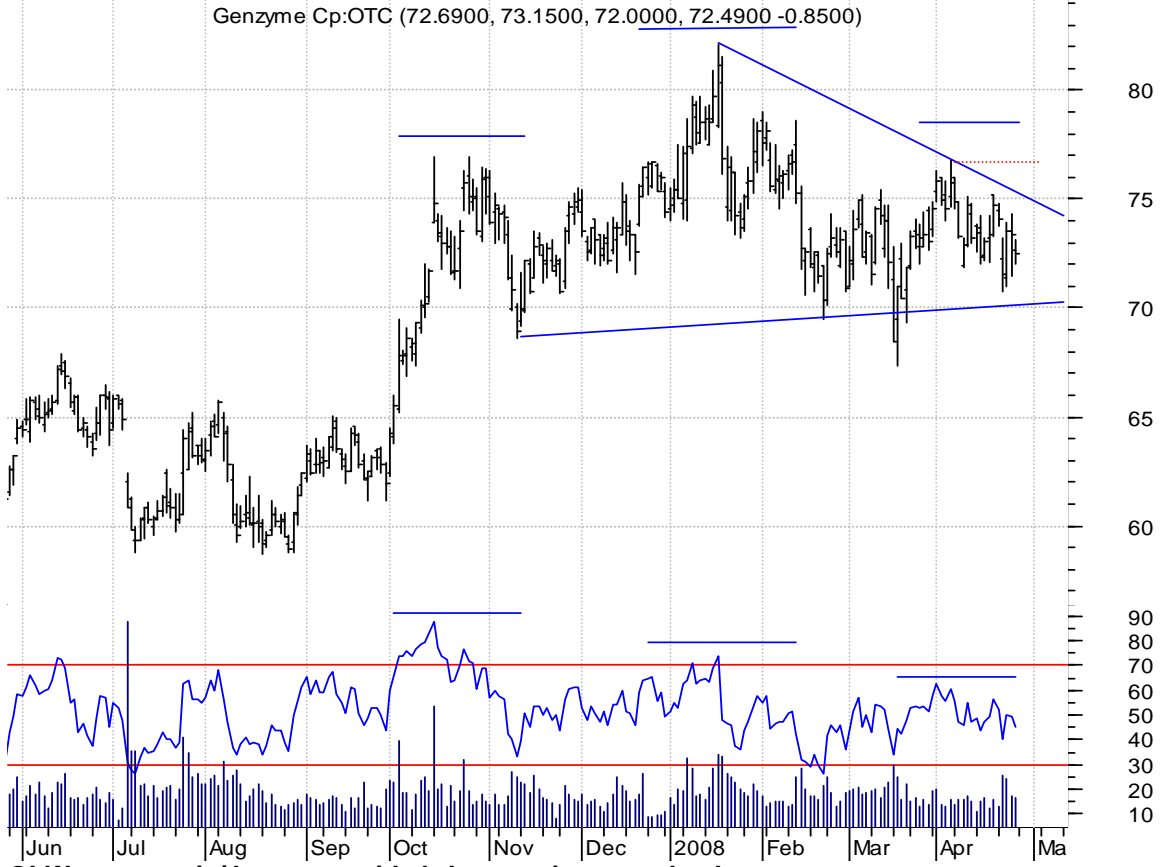


### DXPE symm. tri. / buy on upside brkout on increased volume

DXP Enterprises (41.9200, 42.5600, 41.0000, 42.5600 +1.0500)

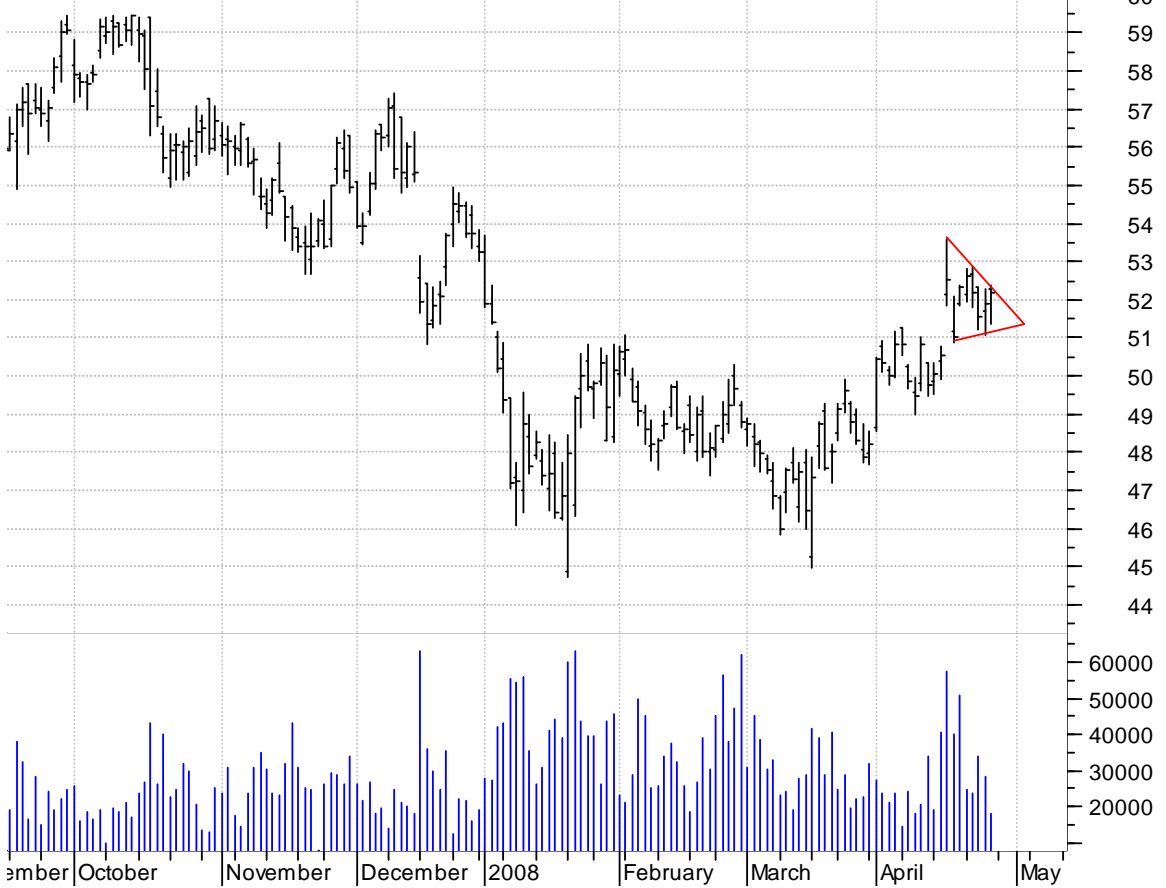


**GENZ head and shoulders / 1) sell on downside brkout or  
 2) buy on upside brkout thru dotted red line on increased volume  
 (h. & sh. failures often times breakout sharply to the upside)**



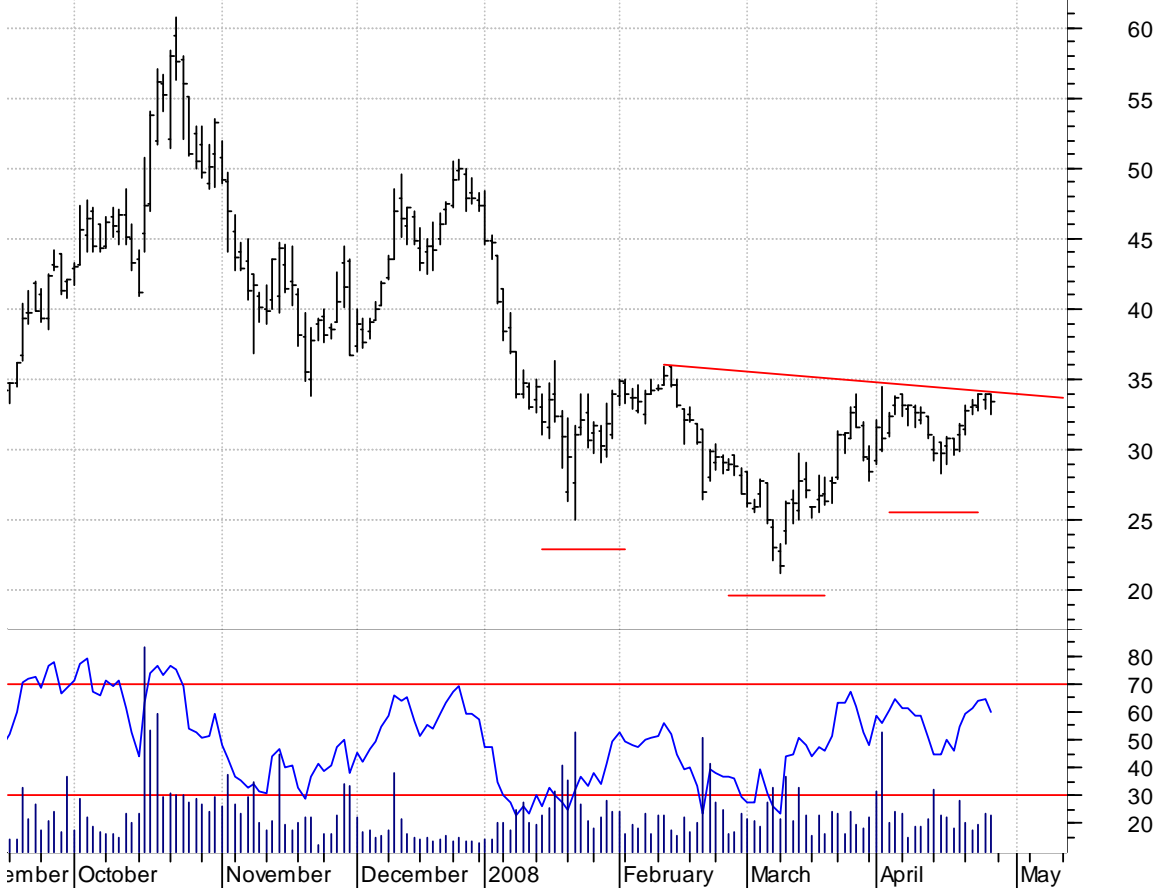
**ITW symm. tri. / buy on upside brkout on increased volume**

Illinois Tool Wo (52.2800, 52.3900, 51.3800, 52.2000 +0.2900)



**LULU inv. h. & sh. / buy on upside brkout on increased volume**

lululemon athlet (34.0000, 34.0000, 32.4600, 33.4600 -0.5400)



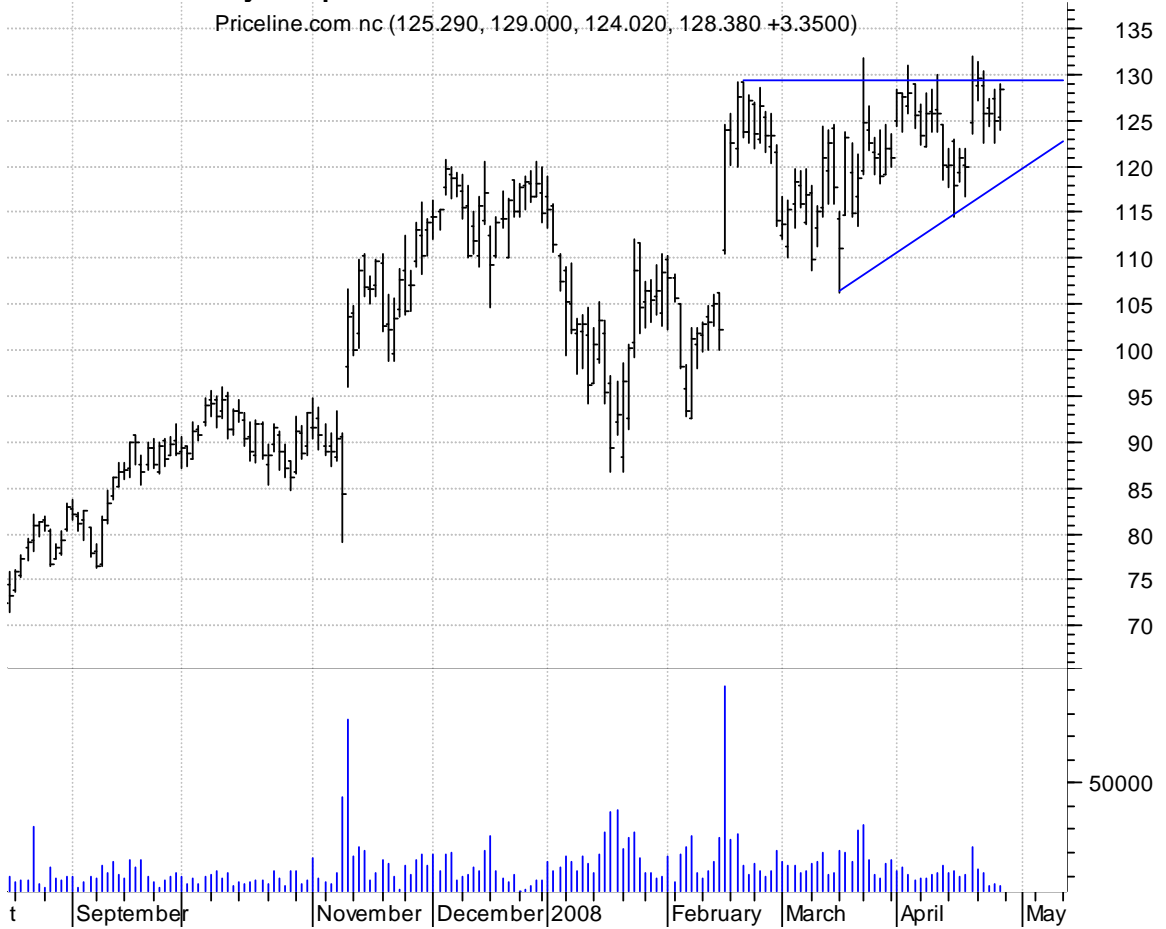
**OTEX symm. tri. / buy on upside brkout on increased volume**

Open Text Corp:O (32.8900, 33.8200, 32.1900, 33.0300 +0.0100)



**PCLN asc. tri. / buy on upside brkout on increased volume**

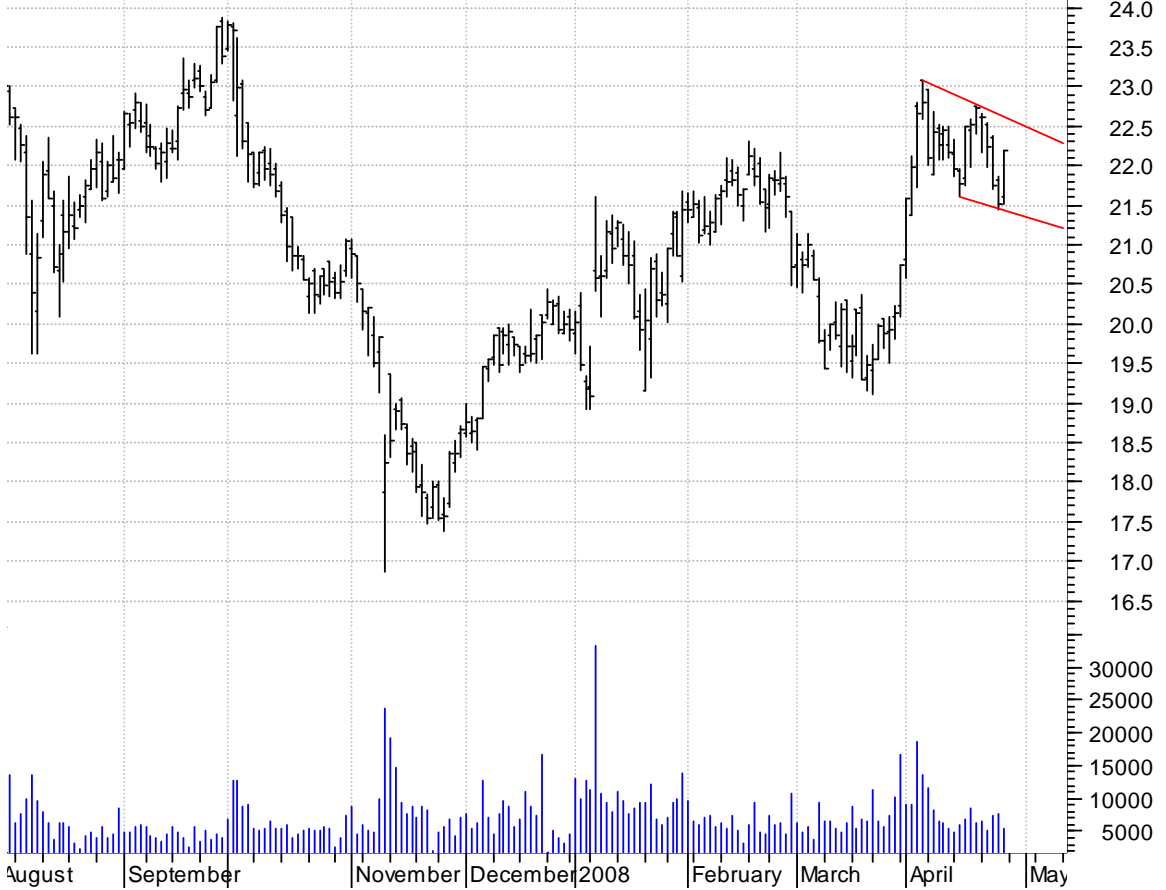
Priceline.com nc (125.290, 129.000, 124.020, 128.380 +3.3500)





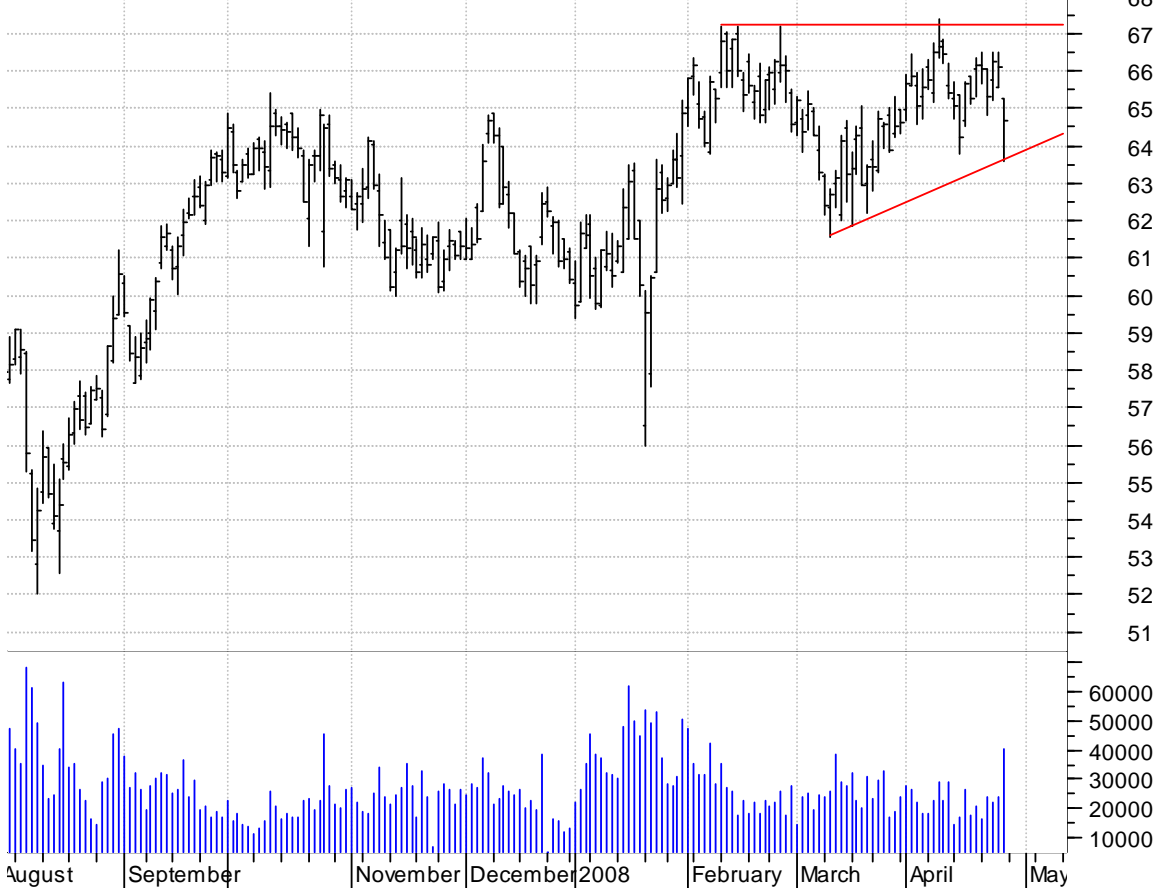
### RPM falling wedge preceded by 'pole-like' move / buy on upside breakout on increased volume

RPM Intl Inc:NYS (21.6200, 22.2000, 21.5200, 22.2000 +0.6900)



### RTN asc. tri. / buy on upside breakout on increased volume

Raytheon Co CI B (65.2500, 65.2800, 63.6000, 64.6700 -1.4200)



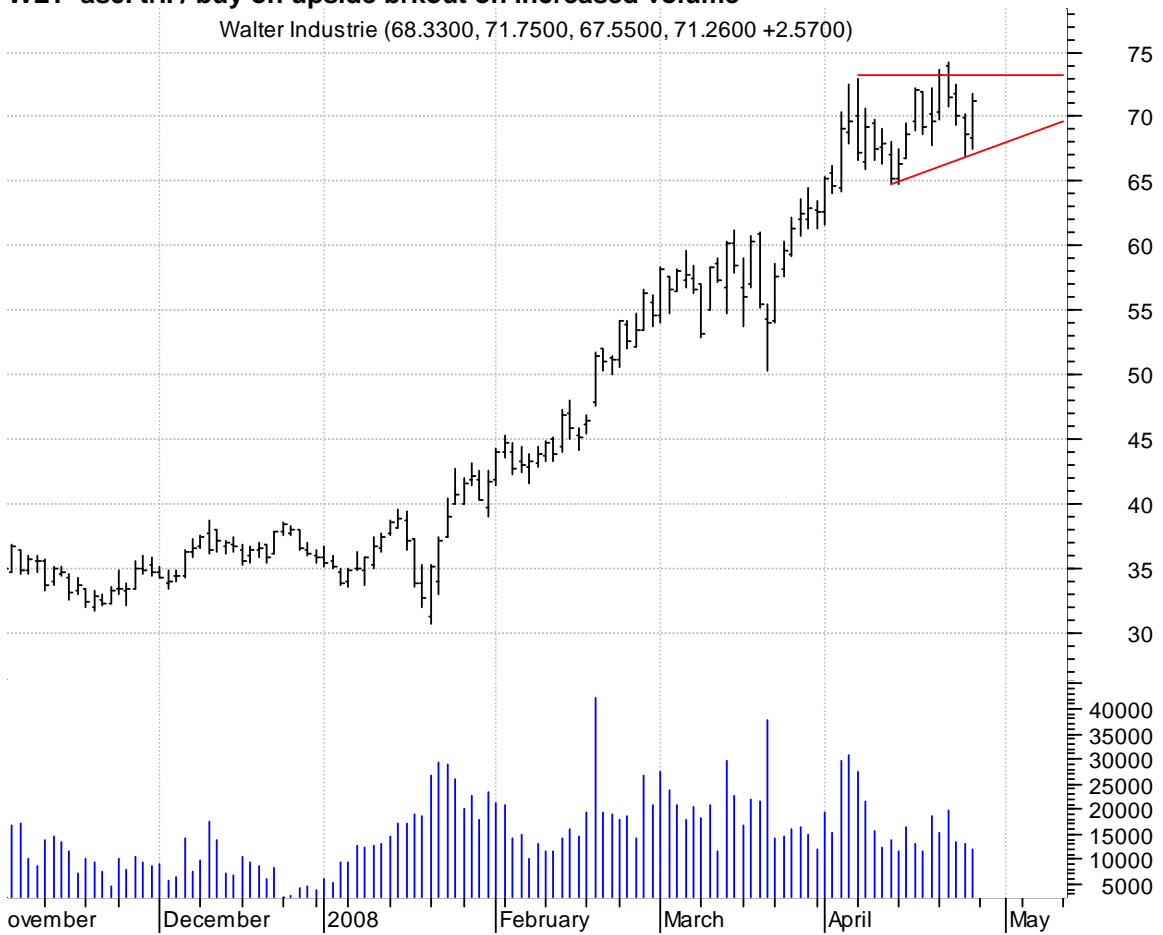
**SNY inv. h. & sh. / buy on upside brkout on increased volume**

SANOFI-AVENTIS A (39.5100, 39.7000, 39.3400, 39.5900 +0.4100)



**WLT asc. tri. / buy on upside brkout on increased volume**

Walter Industrie (68.3300, 71.7500, 67.5500, 71.2600 +2.5700)



**chartpatterns.com**  
Chart Pattern Analysis for Timing the Markets

[KMatras@aol.com](mailto:KMatras@aol.com)