

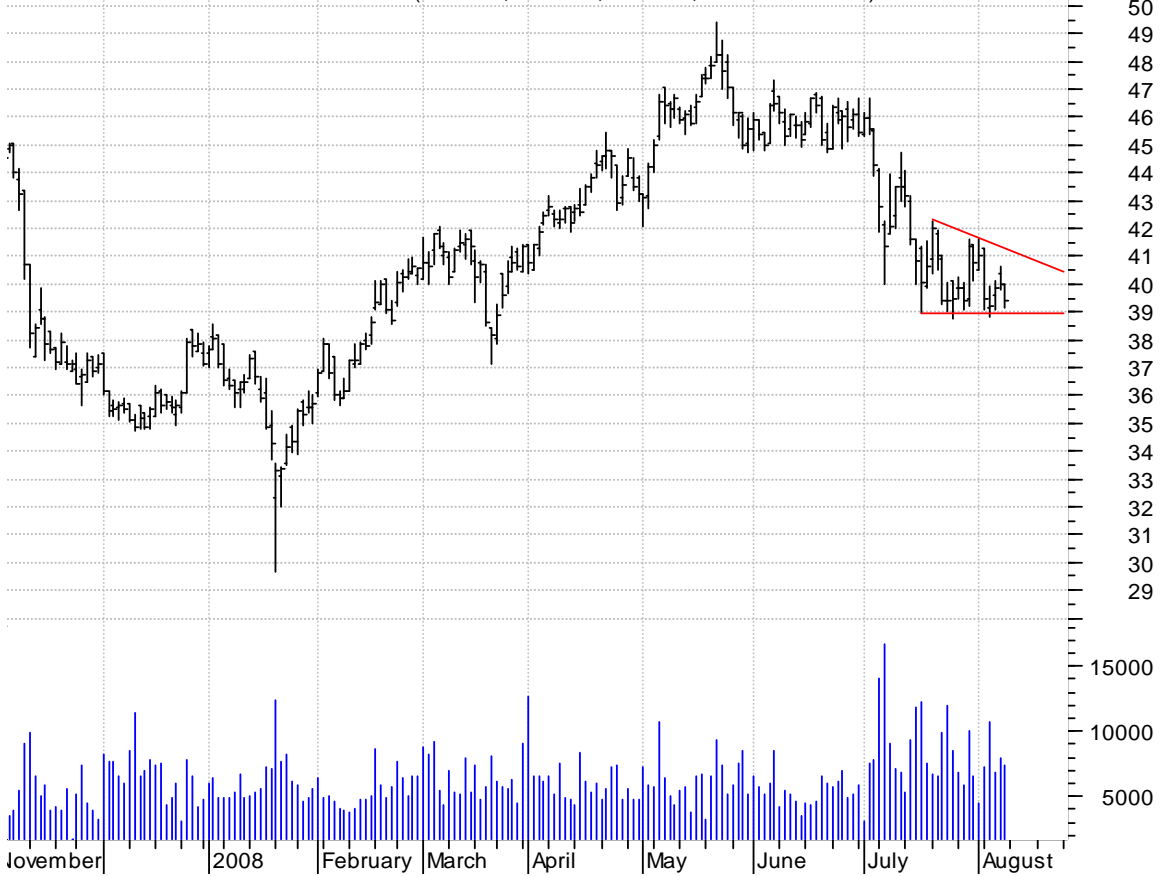
AMGN asc. tri. preceded by 'pole-like' move / buy on upside brkout on increased volume

Amgen Co:OTC (62.3800, 63.8000, 62.1800, 63.8000 +1.7600)



ERF desc. tri. / sell on downside brkout on increased volume

ENERPLUS RES FD (39.9900, 39.9900, 39.1700, 39.4000 -0.5900)



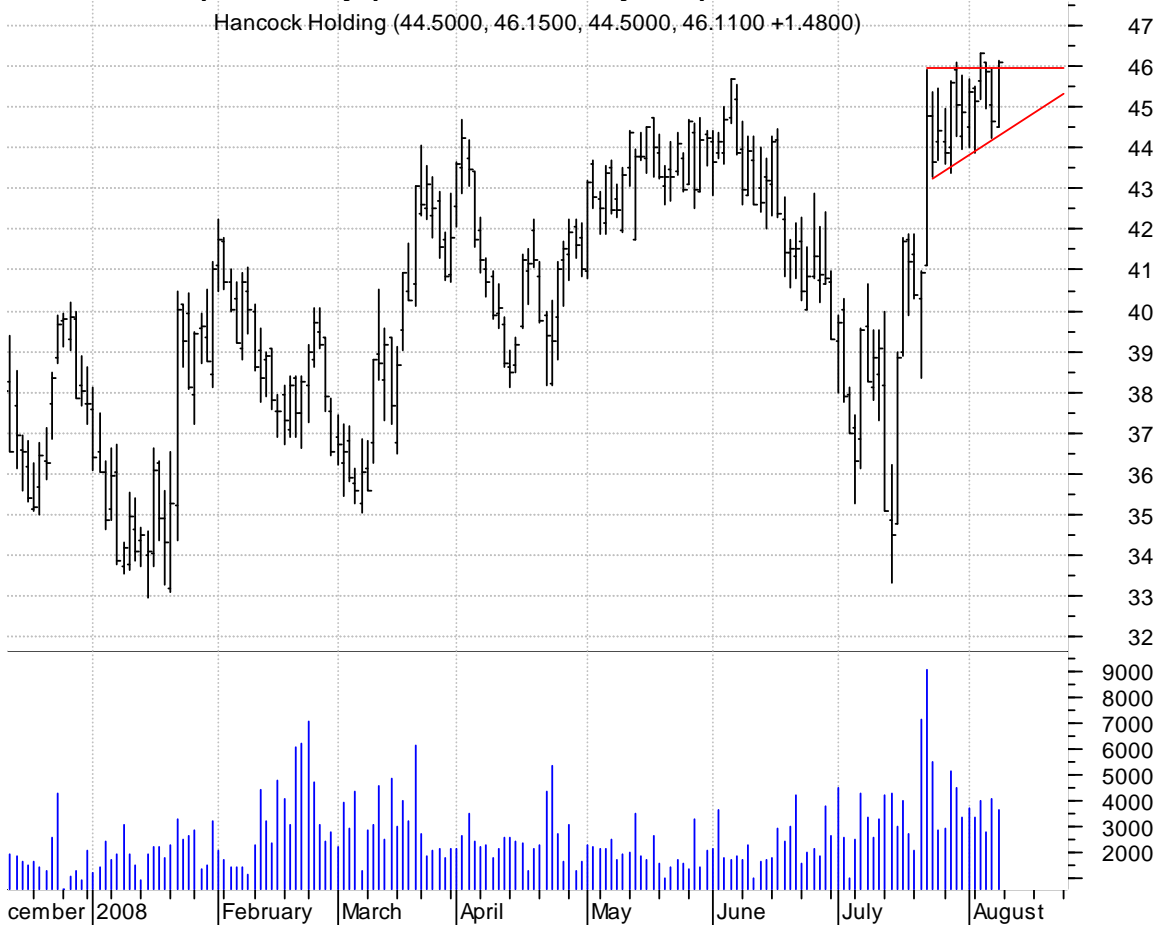
FINL symm. tri. / buy on upside breakout on increased volume

Finish Line Inc: (9.9900, 10.8100, 9.9900, 10.8100 +0.7200)



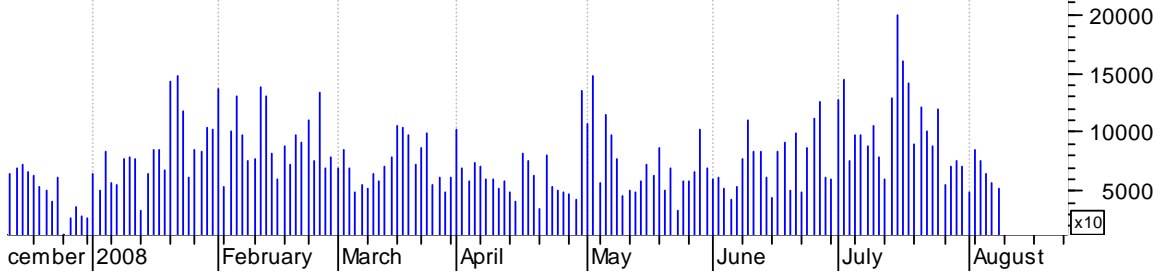
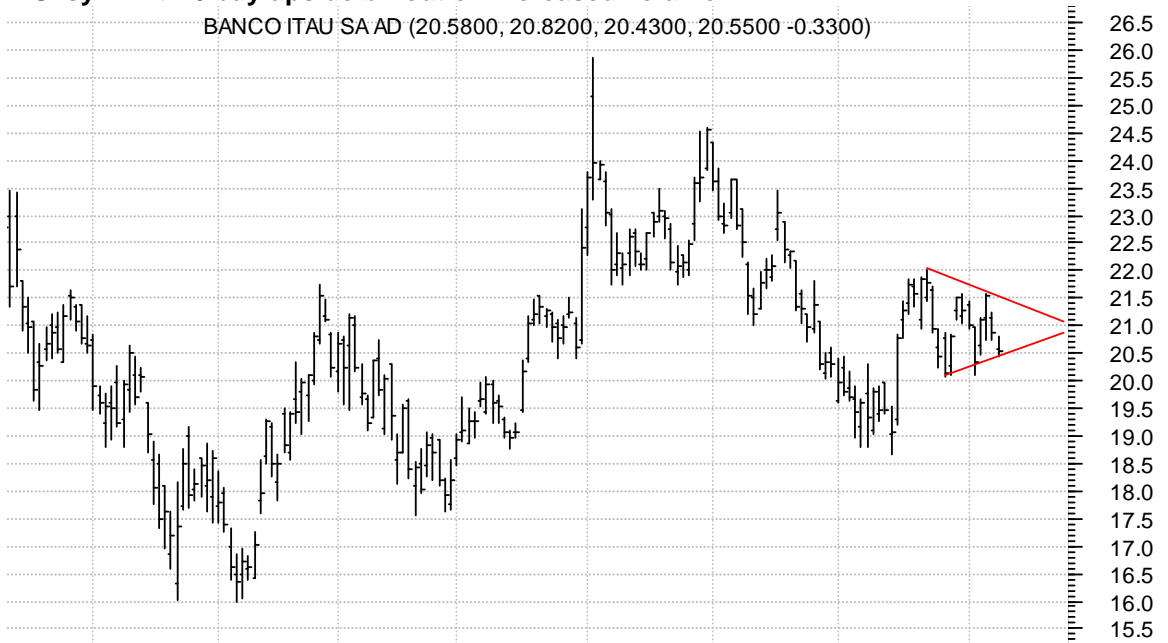
HBHC asc. tri. preceded by 'pole-like' move / buy on upside continuation on increased volume

Hancock Holding (44.5000, 46.1500, 44.5000, 46.1100 +1.4800)



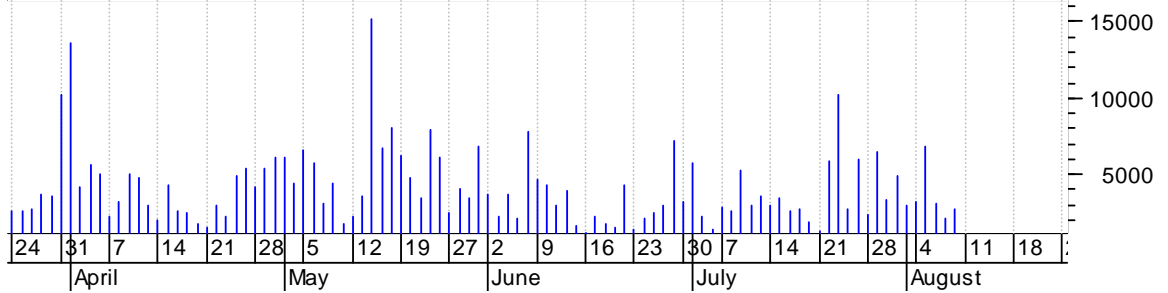
ITU symm. tri. / buy upside brkout on increased volume

BANCO ITAU SA AD (20.5800, 20.8200, 20.4300, 20.5500 -0.3300)



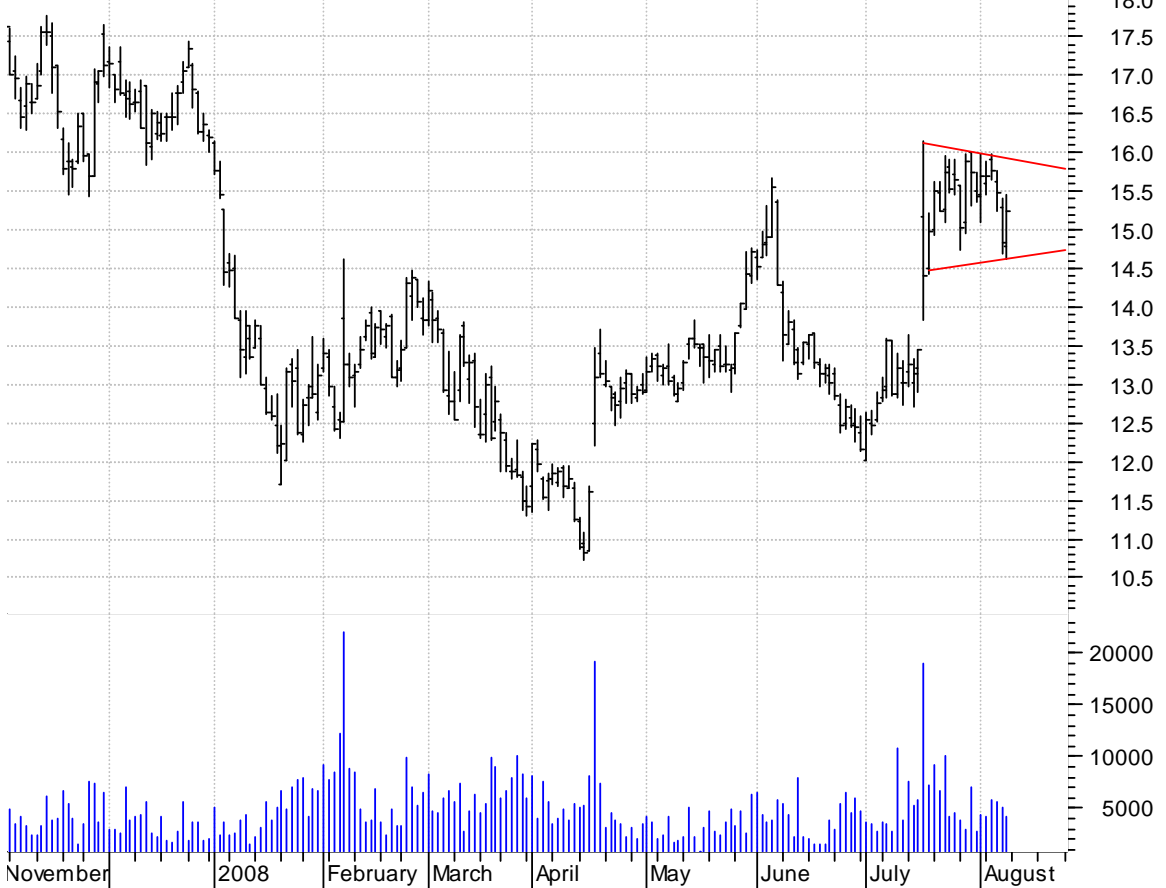
IWOV symm. tri. preceded by 'pole-like' move / buy on upside brkout on increased volume

Interwoven Inc:O (14.7900, 15.1800, 14.6700, 15.1600 +0.3500)



KNL symm. tri. preceded by 'pole-like' move / buy on upside brkout on increased volume

KNOLL INC:NYSE (14.7900, 15.4500, 14.6300, 15.2400 +0.4100)



LUFK symm. tri. preceded by 'pole-like' move / buy on upside brkout on increased volume

Lufkin Industrie (89.4800, 90.5500, 88.0100, 88.9100 -1.4000)



MCK falling wedge / buy on upside breakout on increased volume

Mc Kesson Corp:N (54.7900, 57.1500, 54.4500, 57.0200 +2.0700)



MTD bull pennant / buy on upside breakout on increased volume

Mettler Toledo I (107.430, 109.590, 106.750, 109.000 +1.0600)



NGLS falling wedge / buy on upside breakout on increased volume

Targa Resources (21.5000, 22.6000, 21.1400, 21.8000 +0.5700)



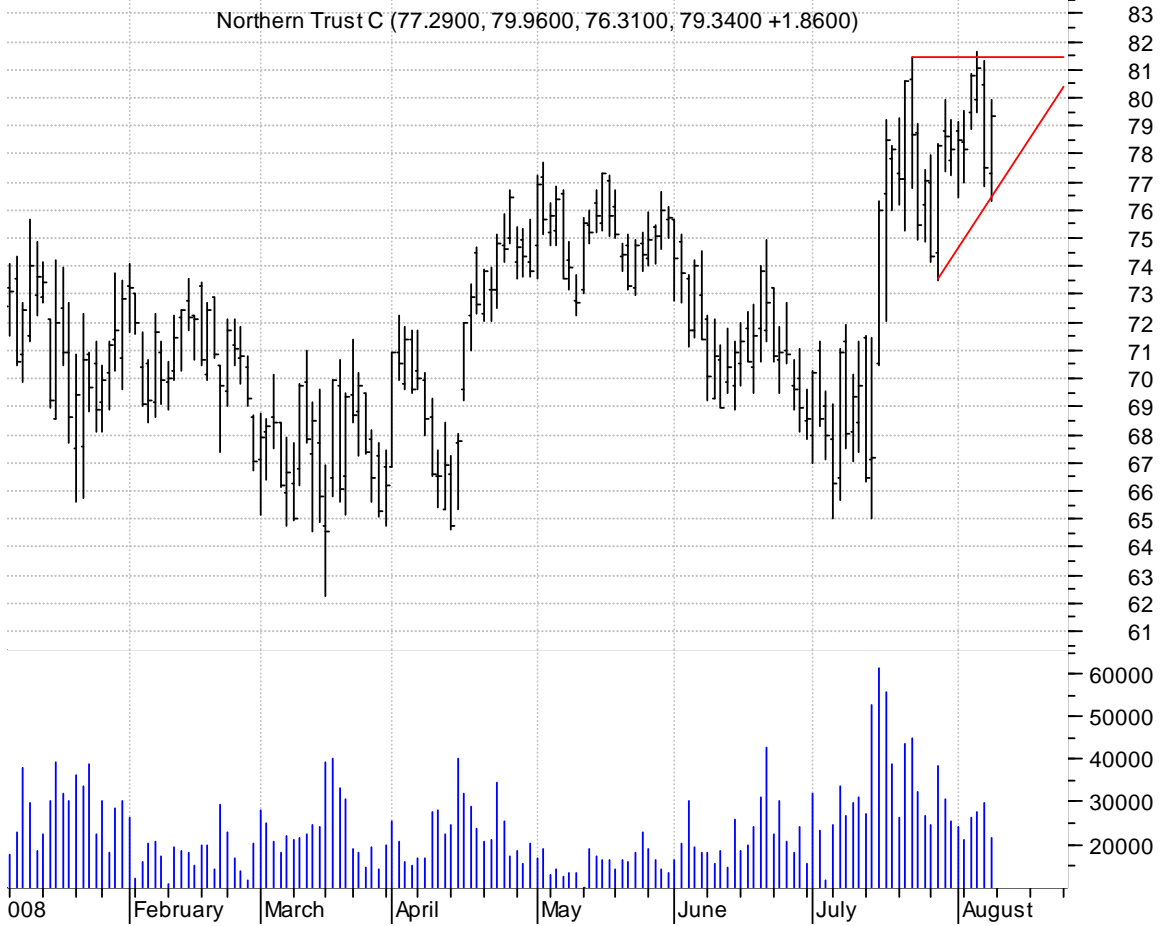
NIHD rising wedge / sell on downside breakout on increased volume

NII HOLDINGS INC (53.4800, 54.1200, 53.0200, 53.8900 +0.2300)



NTRS asc. tri. preceded by 'pole-like' move / buy on upside brkout on increased volume

Northern Trust C (77.2900, 79.9600, 76.3100, 79.3400 +1.8600)



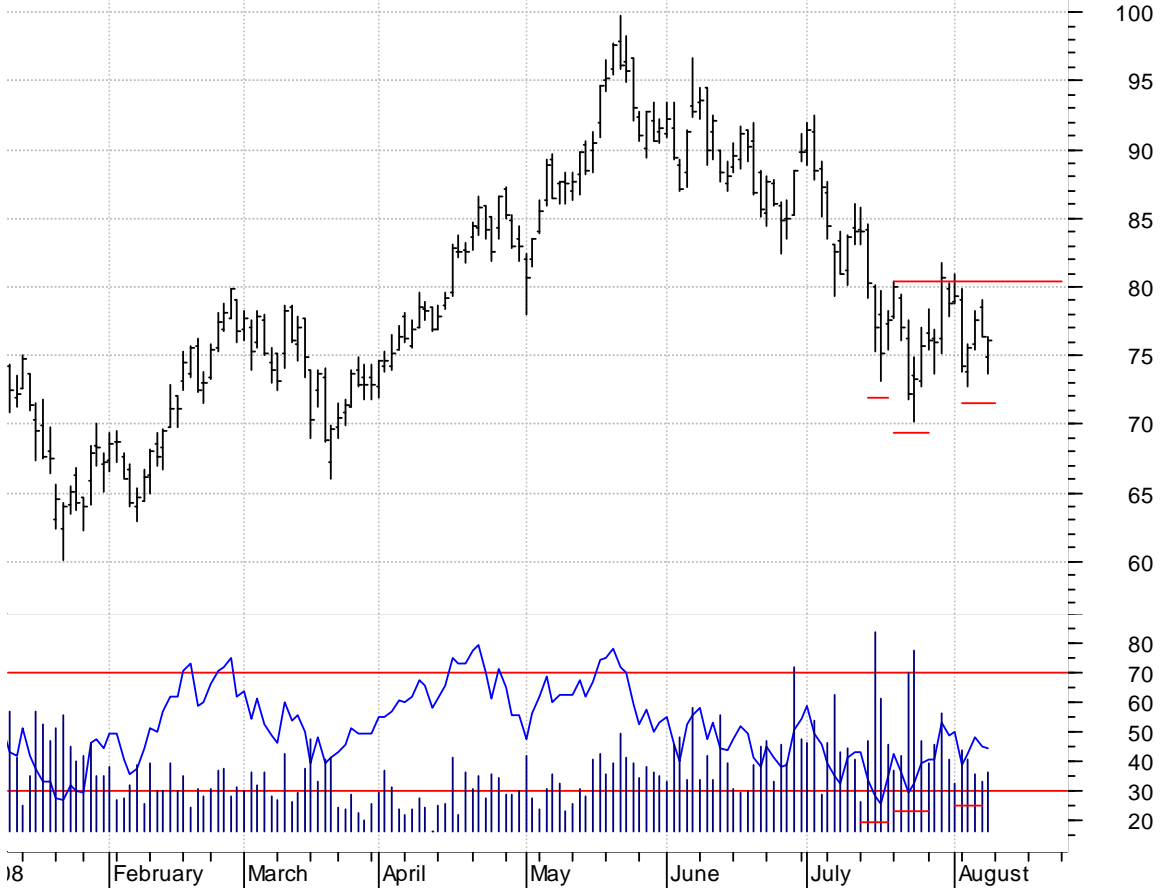
NWY symm. tri. / buy on upside brkout on increased volume

NEW YORK & CO IN (9.4000, 9.8300, 9.2800, 9.8300 +0.4500)



OXY inv. h. & sh. / buy on upside brkout on increased volume

Occidental Petro (74.9000, 76.3500, 73.6800, 76.0900 -0.2800)



PAS bullish pennant / buy on upside brkout on increased volume

PepsiAmericas In (23.5200, 24.3100, 23.4300, 24.3100 +0.8800)



PWRD asc. tri. / buy on upside breakout on increased volume

Perfect World Co (26.5000, 26.9500, 25.7500, 26.3000 -0.2800)



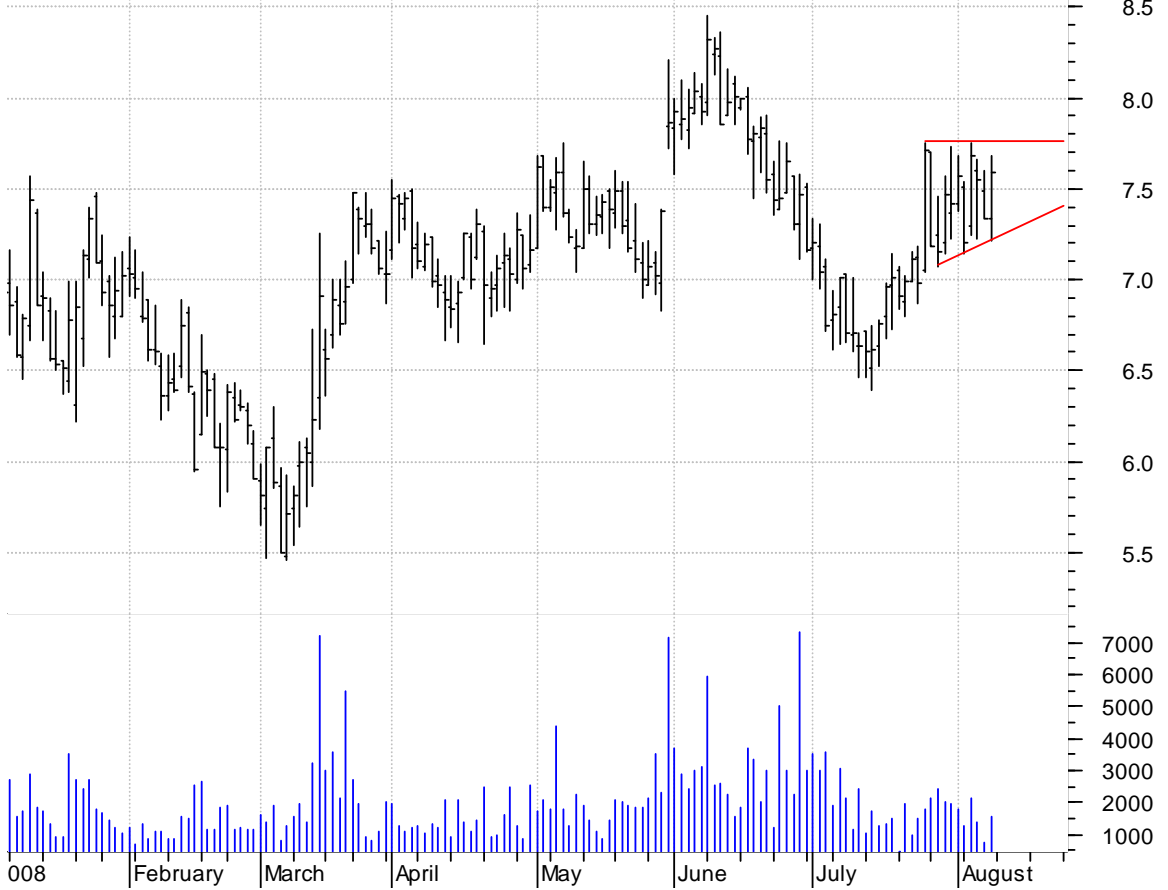
ROC symm. tri. preceded by 'pole-like' move / buy on upside breakout on increased volume

ROCKWOOD HOLDING (38.1000, 38.9200, 38.0300, 38.6900 +0.5400)



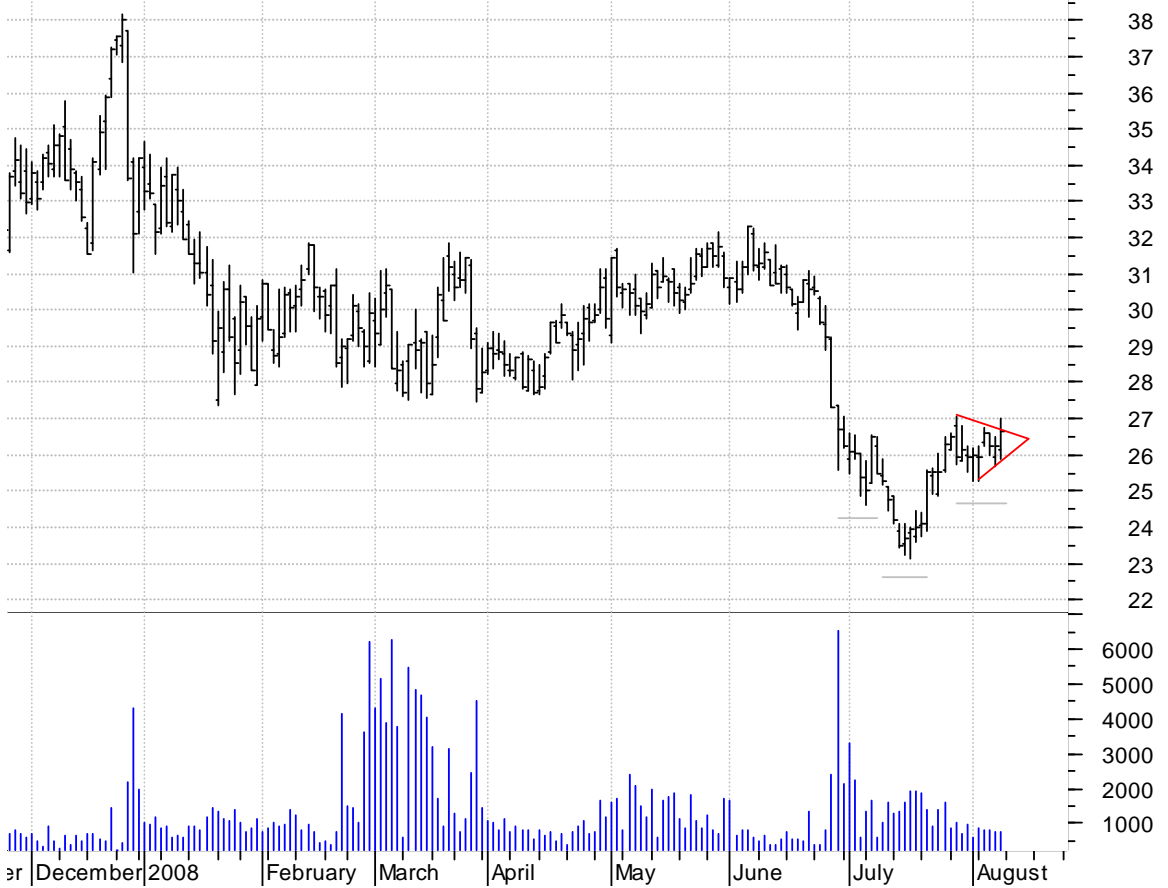
SEAC asc. tri. / buy on upside breakout on increased volume

Seachange Intl I (7.3400, 7.6800, 7.2100, 7.5900 +0.2500)



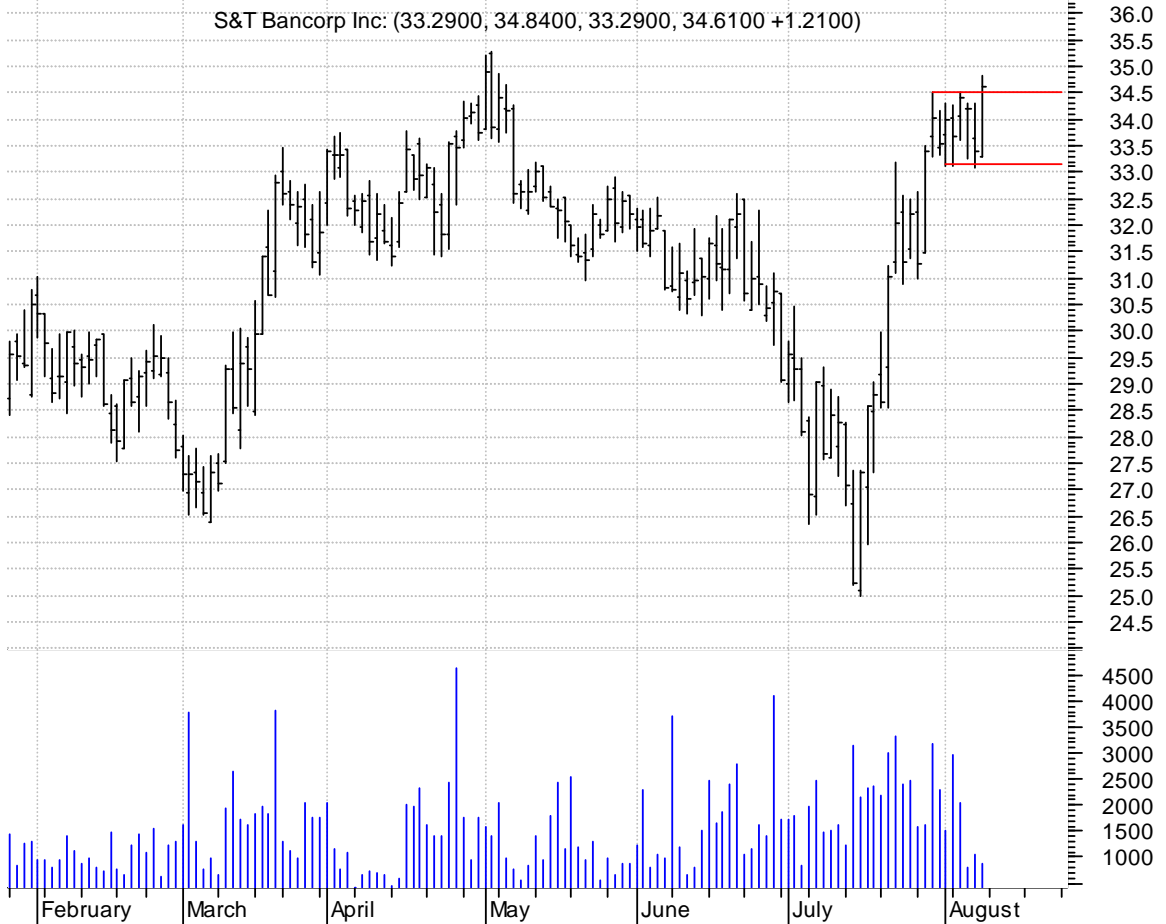
SJW / bull pennant (there's also an inv. h. & sh. in gray) / buy on upside breakout on increased volume

SJW Cp:NYSE (26.1500, 26.9900, 25.9000, 26.6400 +0.4100)



STBA rectangle preceded by 'pole-like' move / buy on upside brkout on increased volume

S&T Bancorp Inc: (33.2900, 34.8400, 33.2900, 34.6100 +1.2100)



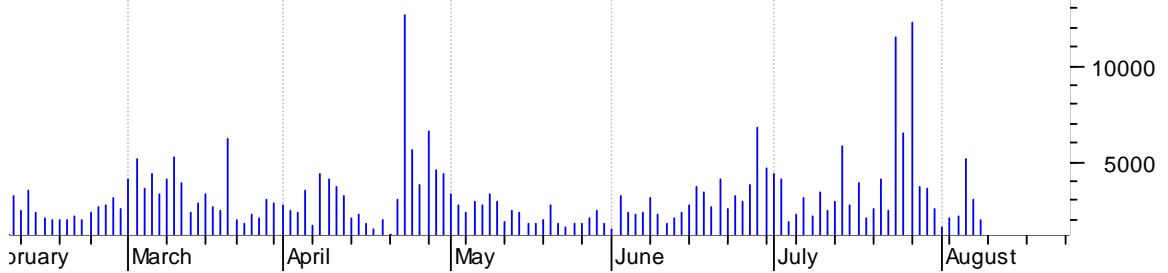
STEI asc. tri. preceded by 'pole-like' move / by on upside brkout on increased volume

Stewart Enterpri (9.1700, 9.2900, 9.0500, 9.2100 +0.0700)



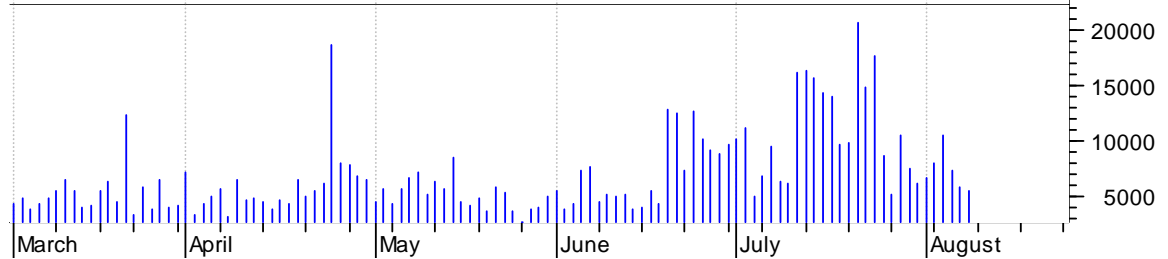
TDY bull pennant / buy on upside brkout on increased volume

Teledyne Technol (62.1700, 64.2000, 61.8600, 64.0800 +1.9100)



WAB bullish flagging / buy on upside brkout on increased volume

Wabtec:NYSE (54.1300, 56.7500, 54.1300, 55.8700 +1.1000)



WMGI symm. tri. / buy on upside brkout on increased volume

WRIGHT MEDICAL G (31.6000, 32.6000, 31.4100, 32.2000 +0.7500)



chartpatterns.com

Chart Pattern Analysis for Timing the Markets

KMatras@aol.com