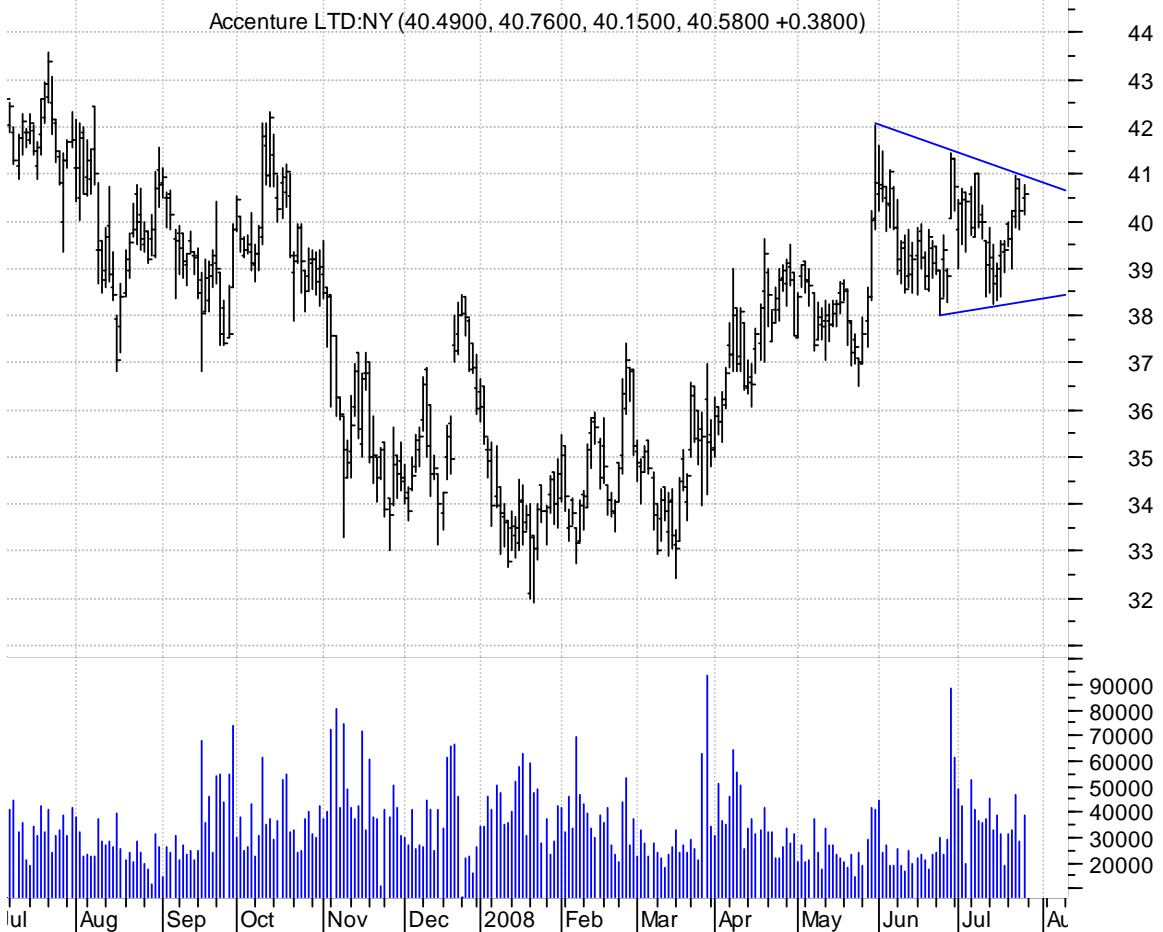


ACN symm. tri. / buy on upside brkout on increased volume

Accenture LTD:NY (40.4900, 40.7600, 40.1500, 40.5800 +0.3800)



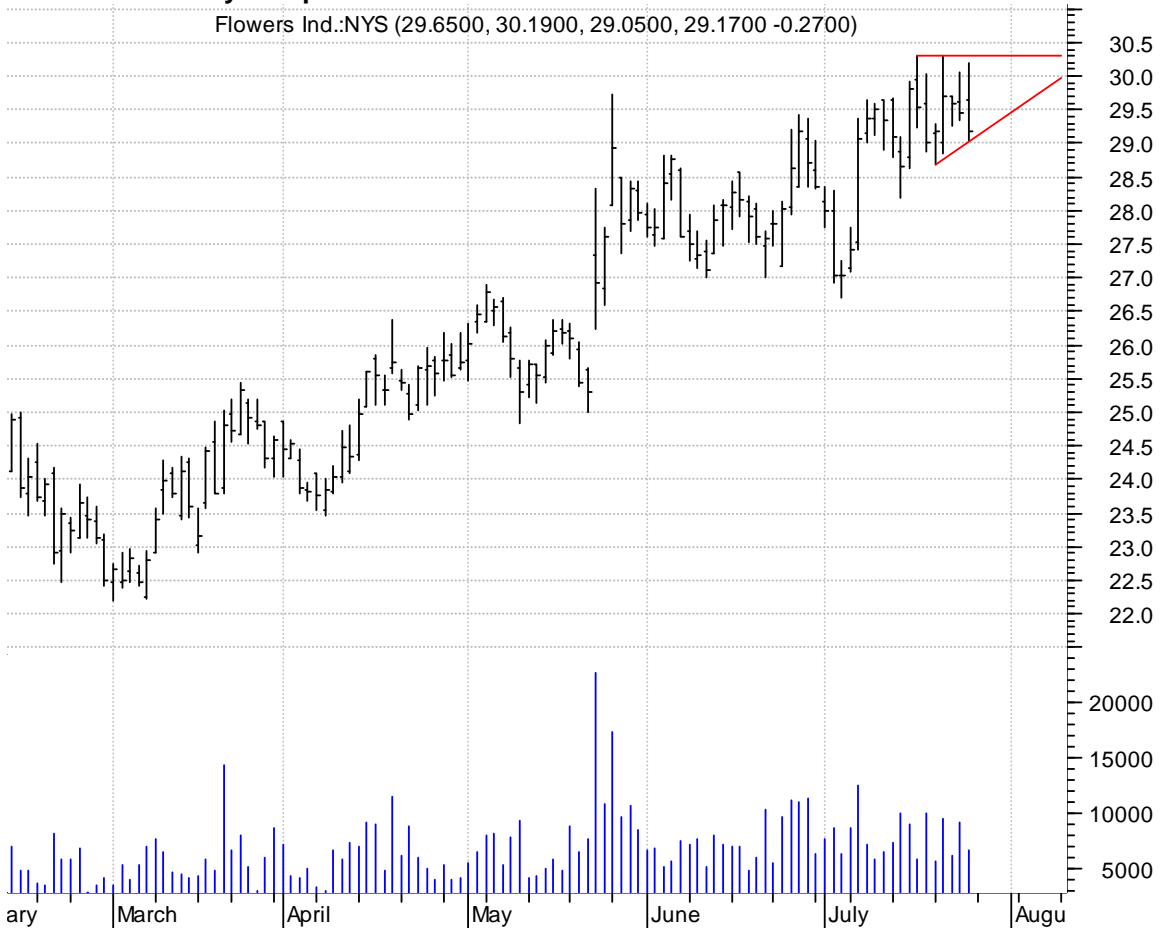
ALTR sloppy symm. tri. preceded by 'pole-like' move / buy on upside brkout on increased volume

Altera Corp:OTC (21.1900, 21.5600, 20.8100, 21.5300 +0.3900)



FLO asc. tri. / buy on upside breakout on increased volume

Flowers Ind.:NYS (29.6500, 30.1900, 29.0500, 29.1700 -0.2700)



GCO asc. tri. / buy on upside breakout on increased volume

Genesco Inc.:NYSE (29.8500, 30.5000, 28.9800, 29.5700 -0.0500)



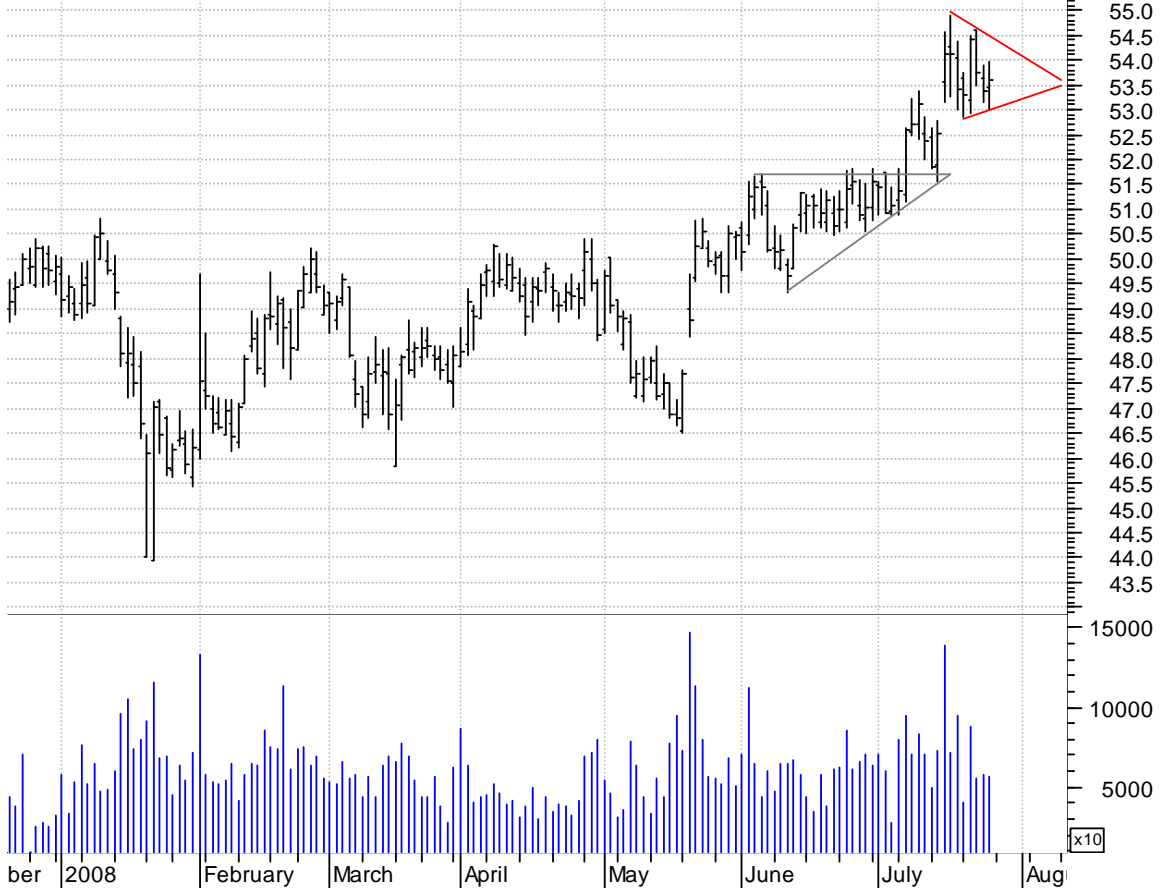
MASI symm. tri. brkout / buy on upside continuation thru dotted red line on increased volume

Masimo Corp:OTC (36.9800, 37.6100, 36.4400, 37.5700 +0.6800)



MDT symm. tri. preceded by 'pole-like' move / buy on upside brkout on increased volume

Medtronic Inc:NY (53.4500, 53.9800, 53.0000, 53.5900 +0.2100)



MTZ sloppy bull pennant / buy on upside brkout on increased volume

Mastec Inc:NYSE (12.4400, 12.6300, 12.1500, 12.4600 +0.1400)

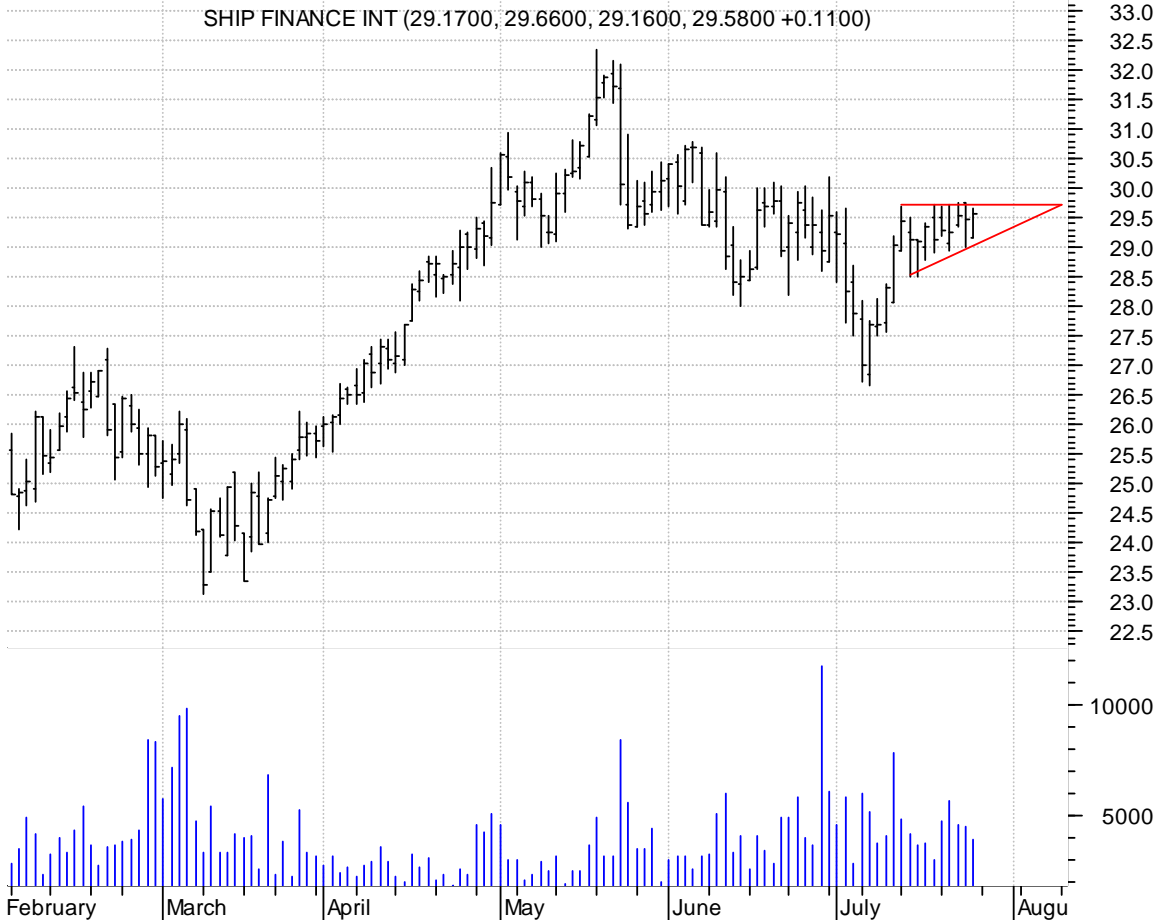


NAT symm. tri. brkout / buy on upside brkout thru dotted red line on increased volume

Nordic Amer Tank (40.0400, 40.8800, 39.4900, 40.1400 +0.3400)



SFL asc. tri. / buy on upside breakout on increased volume



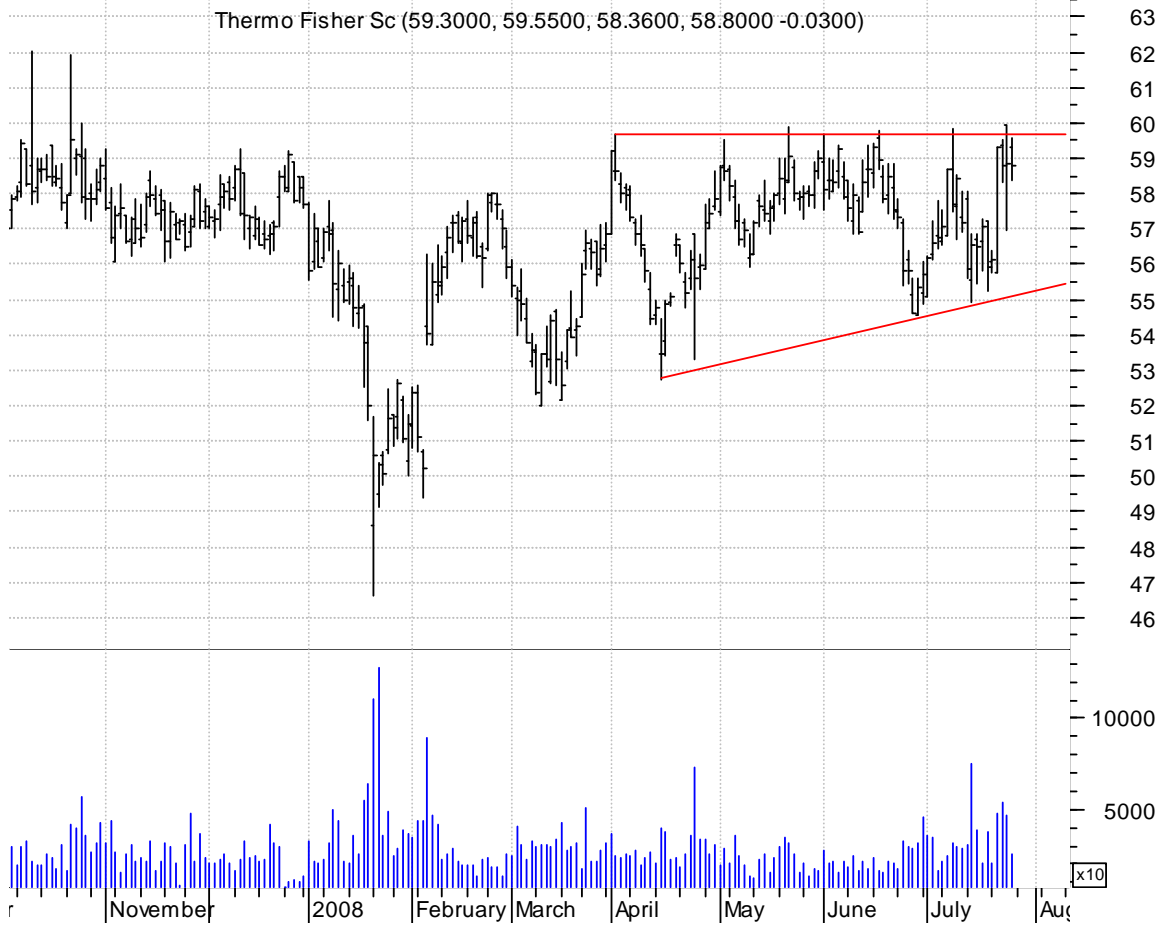
STJ falling wedge preceded by 'pole-like' move / buy on upside breakout on increased volume



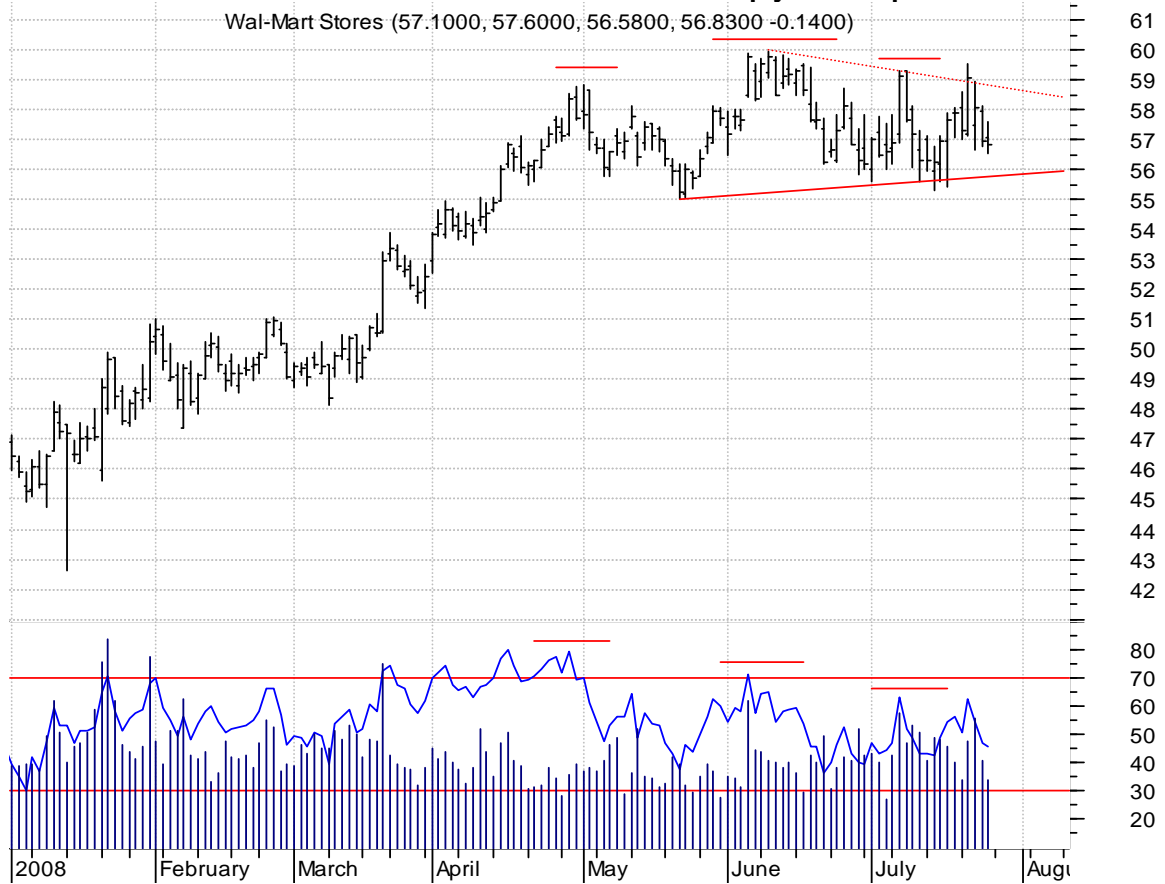
TBSI desc. tri. / sell on downside brkout on increased volume



TMO asc. tri. / buy on upside brkout on increased volume



**WMT h. & sh. 1) sell on downside brkout on increased volume or
2) buy on upside brkout thru dotted red line on increased volume
h. & sh. 'failures' often times breakout sharply to the upside**



chartpatterns.com

Chart Pattern Analysis for Timing the Markets

KMatras@aol.com