

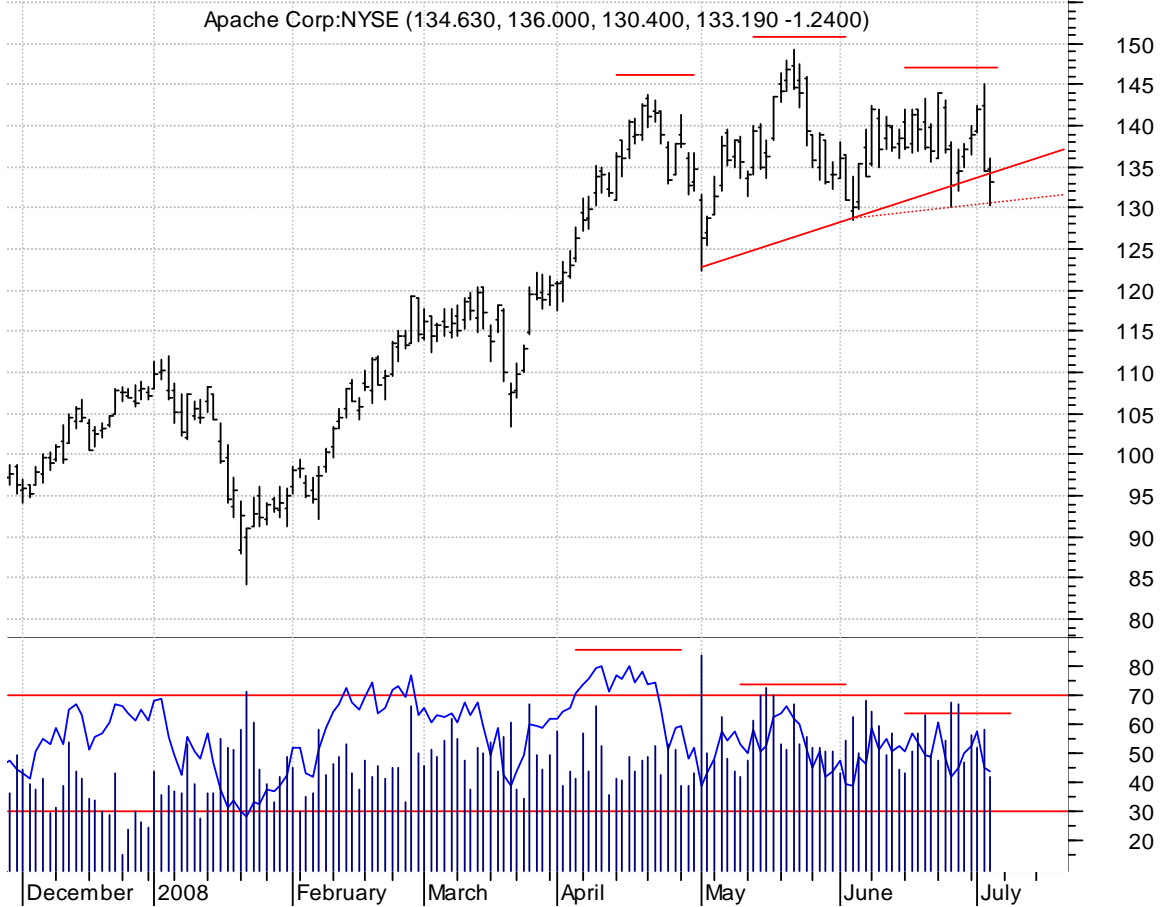
AFAM symm. tri. / buy on upside brkout on increased volume

Almost Family In (26.2500, 26.3600, 25.1100, 25.9300 -0.3200)



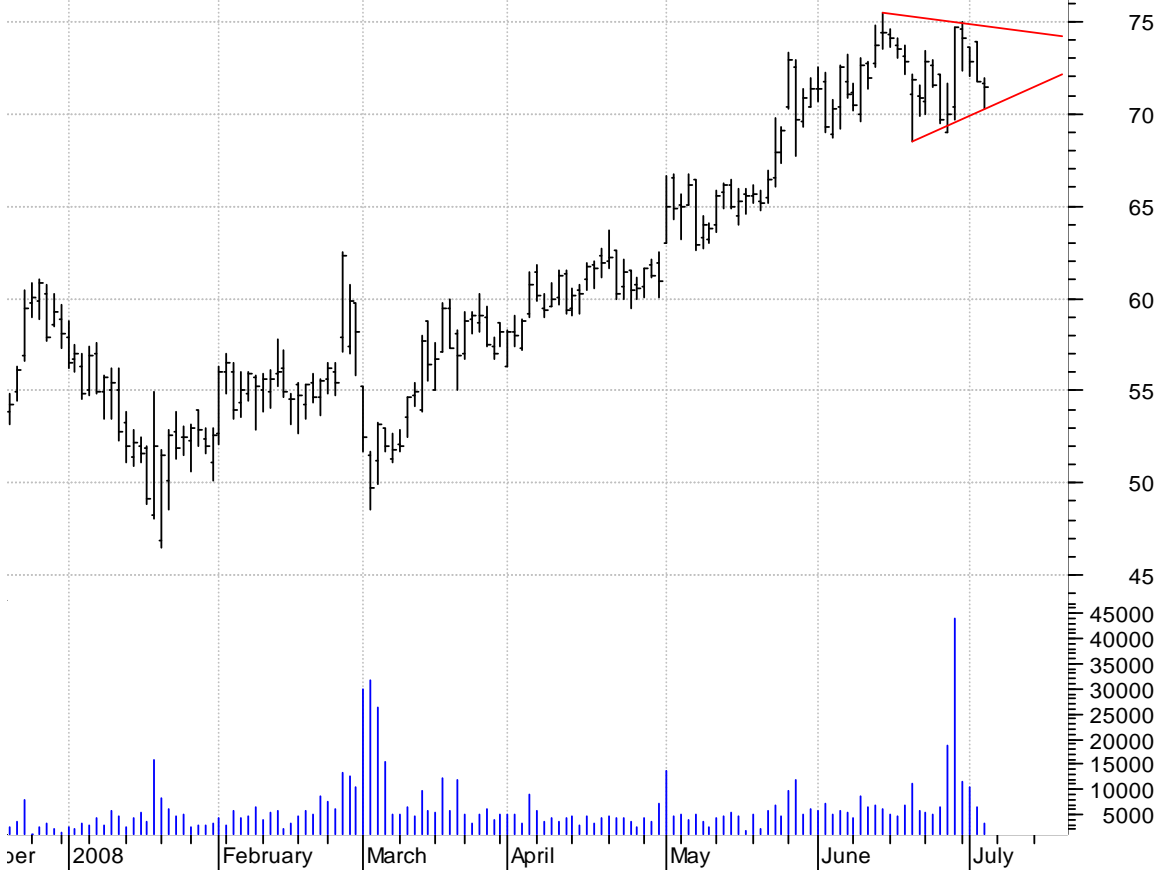
APA h. & sh. / sell on downside brkout thru dotted red line on larger than normal volume

Apache Corp:NYSE (134.630, 136.000, 130.400, 133.190 -1.2400)



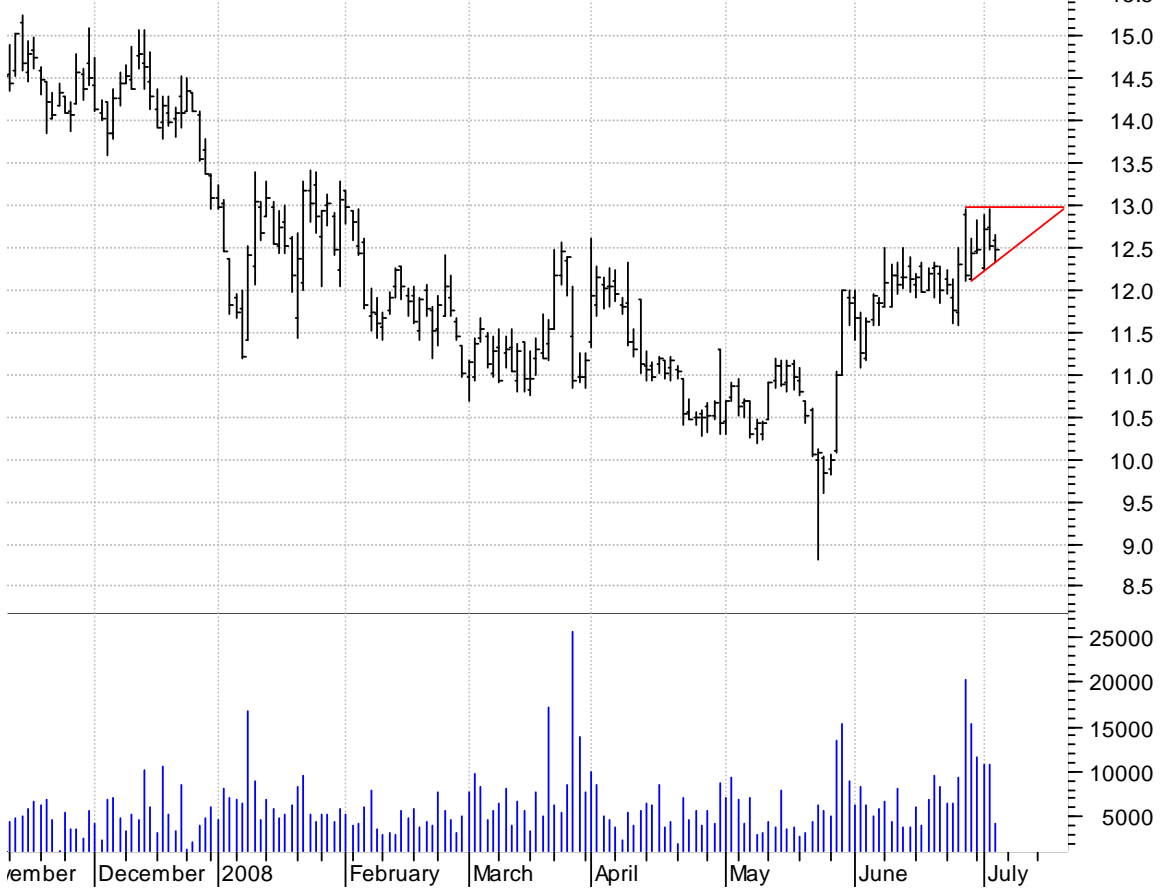
CEDC symm. tri. / buy on upside brkout on larger than normal volume

Central European (71.7000, 71.9600, 70.2400, 71.4500 -0.3500)



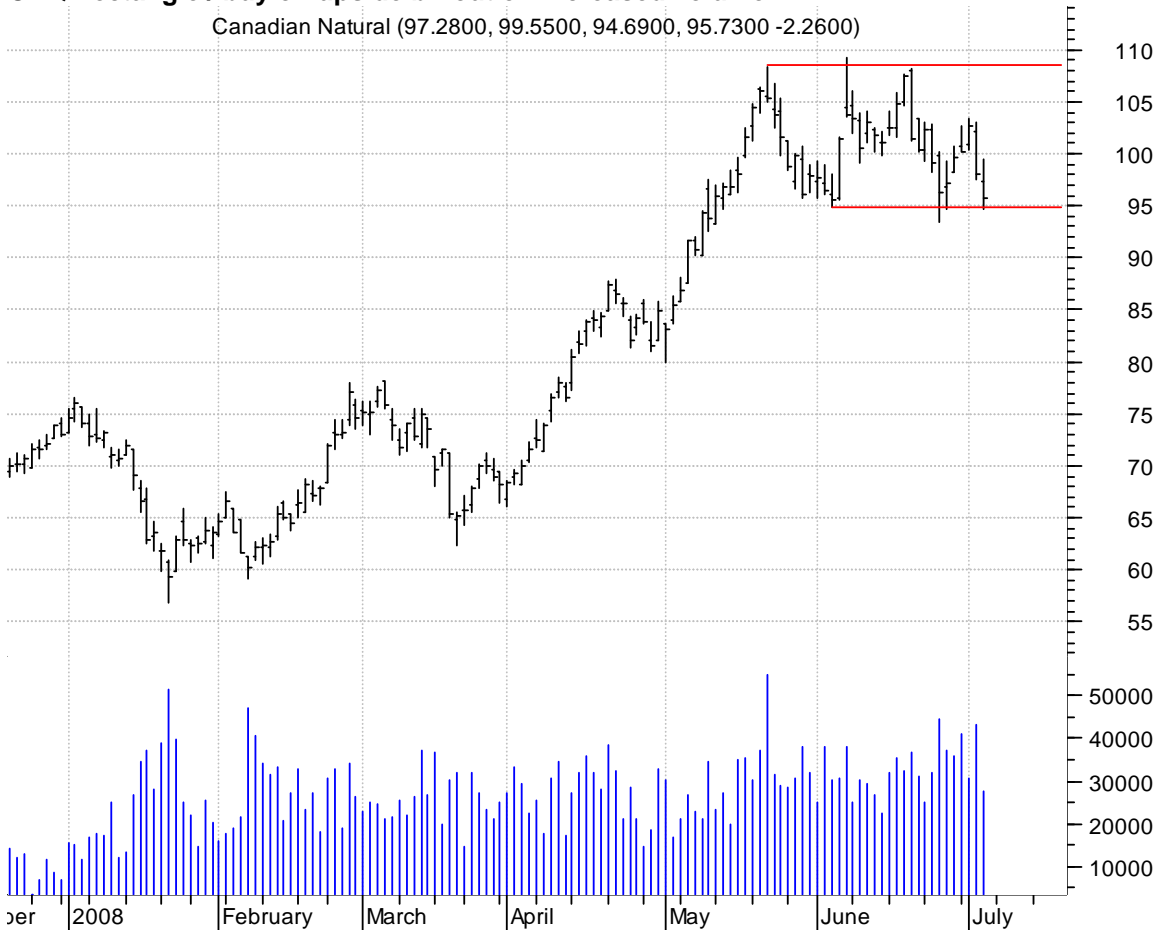
CKR asc. tri. / buy on upside brkout on increased volume

CKE Restaurants: (12.5800, 12.6500, 12.3200, 12.4800 -0.0400)



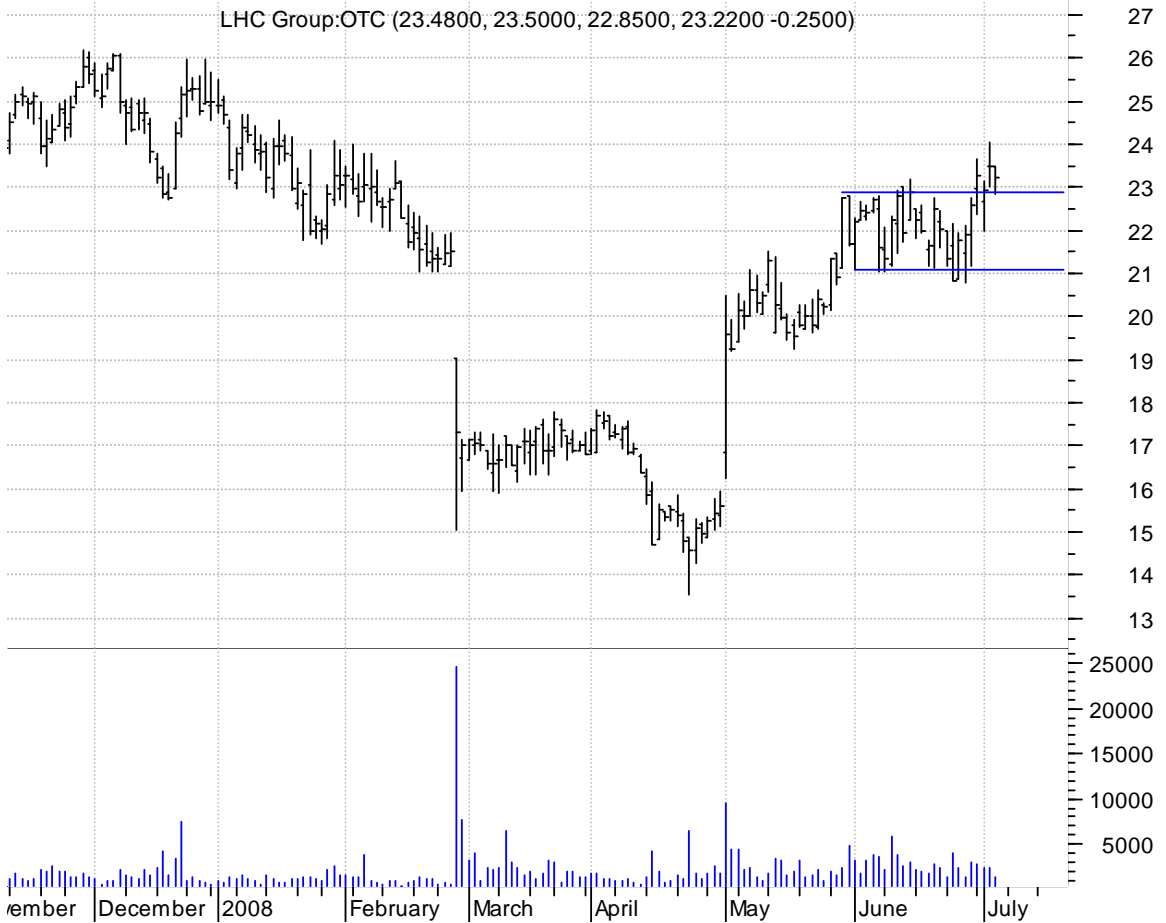
CNQ rectangle / buy on upside breakout on increased volume

Canadian Natural (97.2800, 99.5500, 94.6900, 95.7300 -2.2600)



LHCG rectangle breakout and retracement / buy on upside continuation on increased volume

LHC Group:OTC (23.4800, 23.5000, 22.8500, 23.2200 -0.2500)



LNCR symm. tri. / buy upside brkout on increased volume

Lincare Holdings (28.0000, 28.2000, 27.3100, 27.4300 -0.4100)



MASI symm. tri. / buy on upside brkout on larger than normal volume

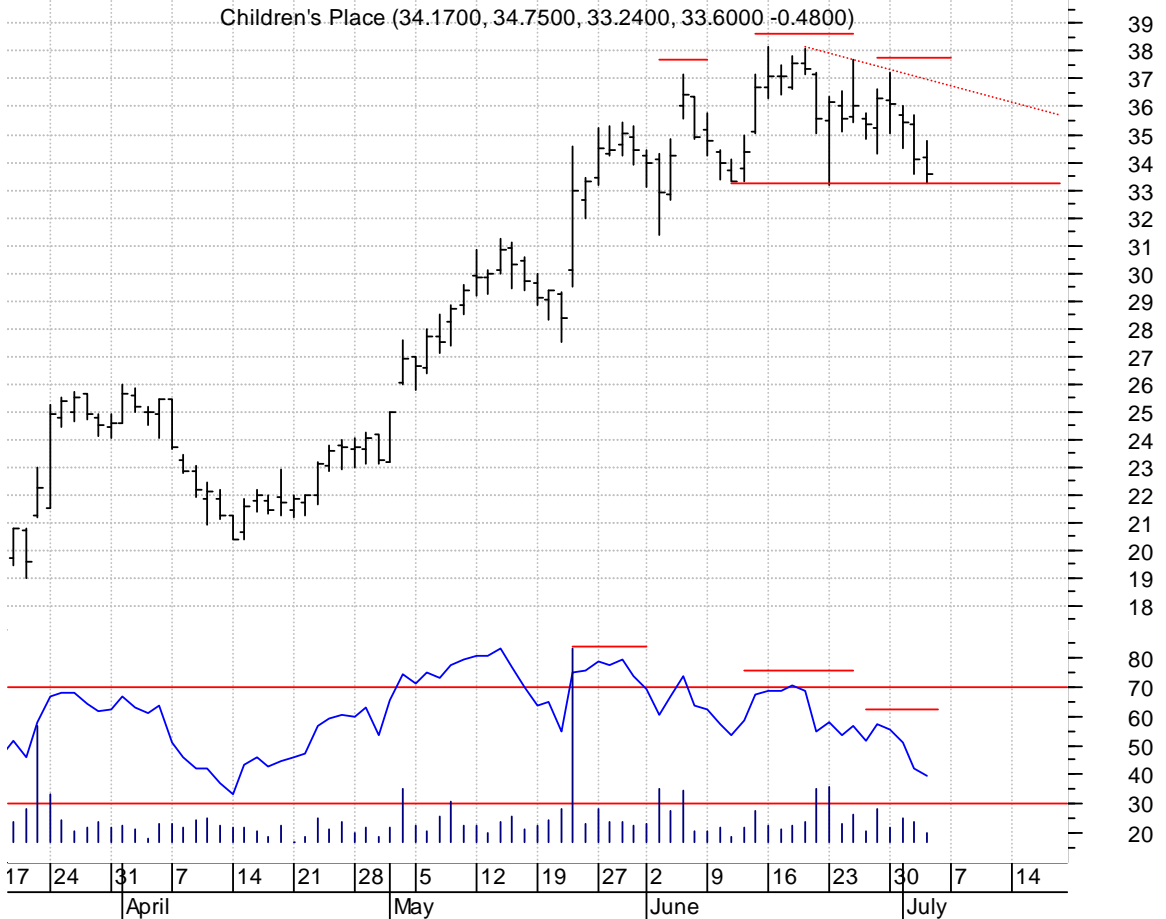
Masimo Corp:OTC (34.1300, 34.1300, 33.2600, 33.6400 -0.5400)



MRVL sloppy asc. tri. / buy on upside brkout on increased volume

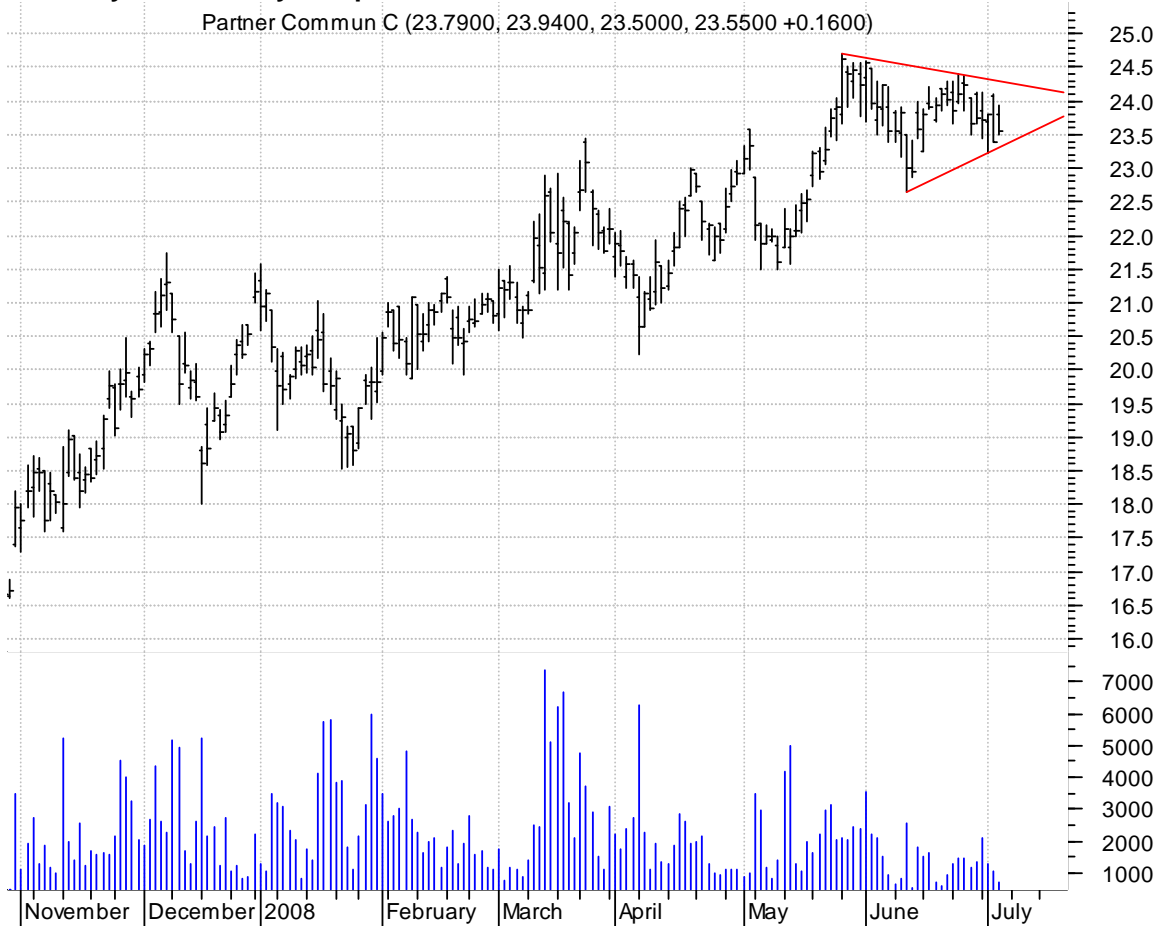


**PLCE h. & sh. 1) sell on downside brkout on increased volume or
2) buy on upside brkout thru dotted red line on increased volume
h. & sh. 'failures' often times breakout sharply to the upside**



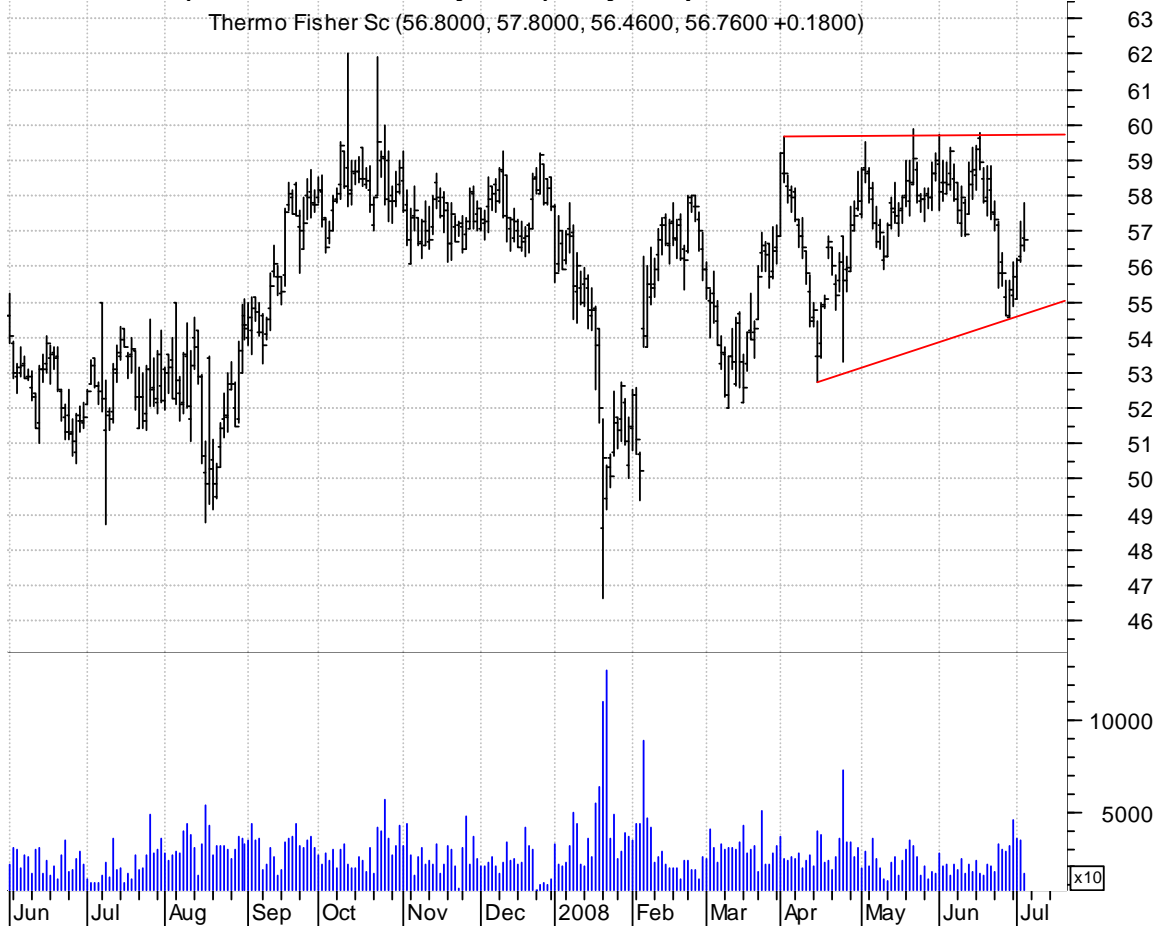
PTNR symm. tri. / buy on upside brkout on increased volume

Partner Commun C (23.7900, 23.9400, 23.5000, 23.5500 +0.1600)



TMO asc. tri. (seen also on a weekly chart) / buy on upside brkout on increased volume

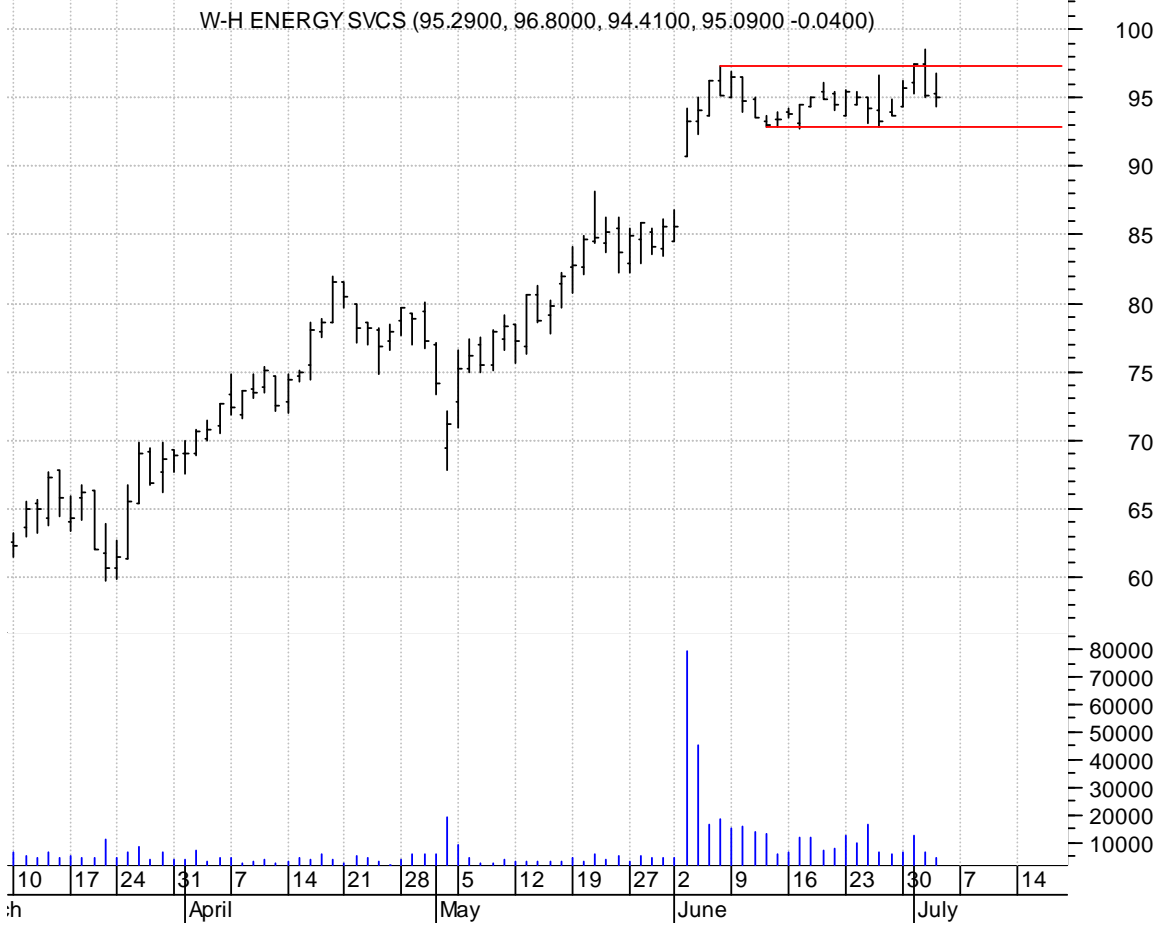
Thermo Fisher Sc (56.8000, 57.8000, 56.4600, 56.7600 +0.1800)



STO desc. tri. / sell on downside brkout on increased volume

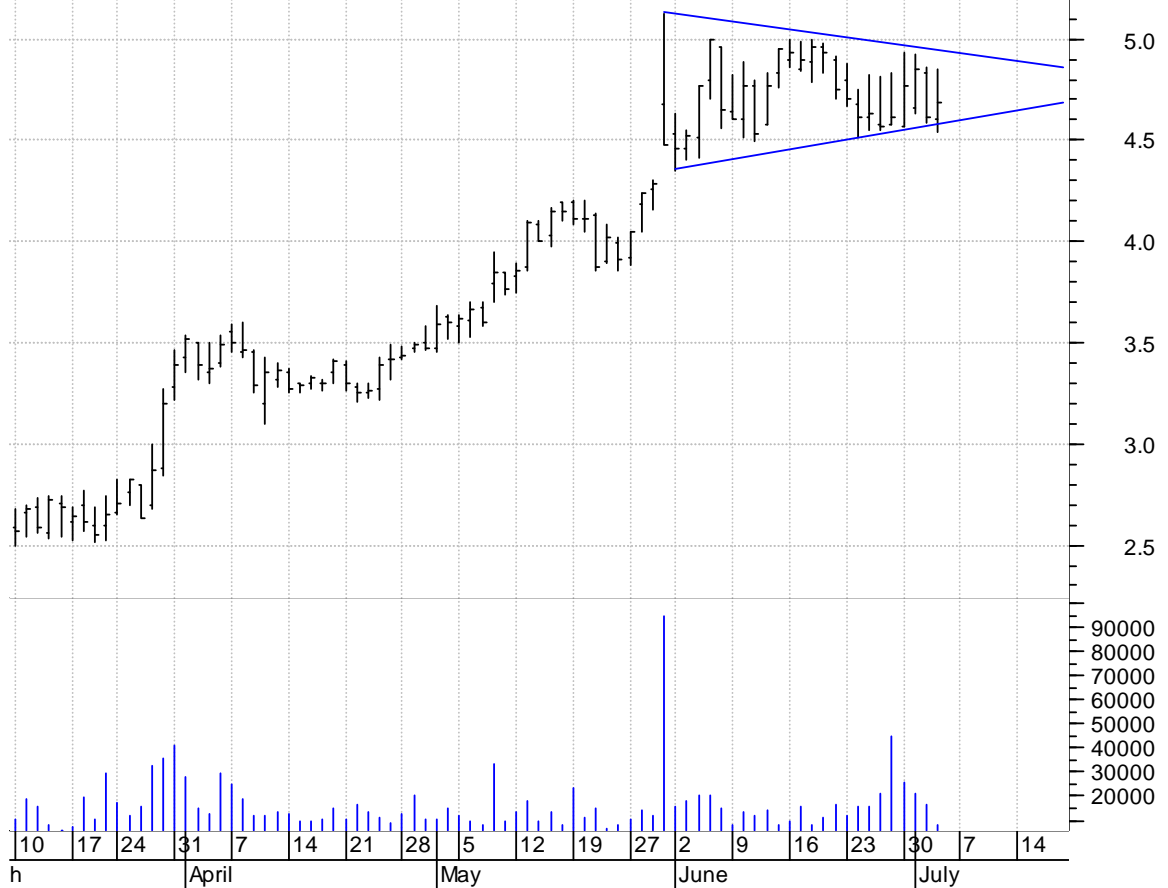


WHQ sloppy rectangle / buy on upside brkout on increased volume



WTSLA symm. tri. preceded by 'pole-like' move / buy on upside breakout on increased volume

Wet Seal Inc Cla (4.6000, 4.8500, 4.5400, 4.6900 +0.0800)



chartpatterns.com

Chart Pattern Analysis for Timing the Markets

KMatras@aol.com