

AA symm. tri. / buy on upside continuation (thru dotted red line) on increased volume



AAPL bullish pennant / buy on upside breakout thru dotted red line on increased volume



ABB bull pennant / buy on upside brkout on increased volume



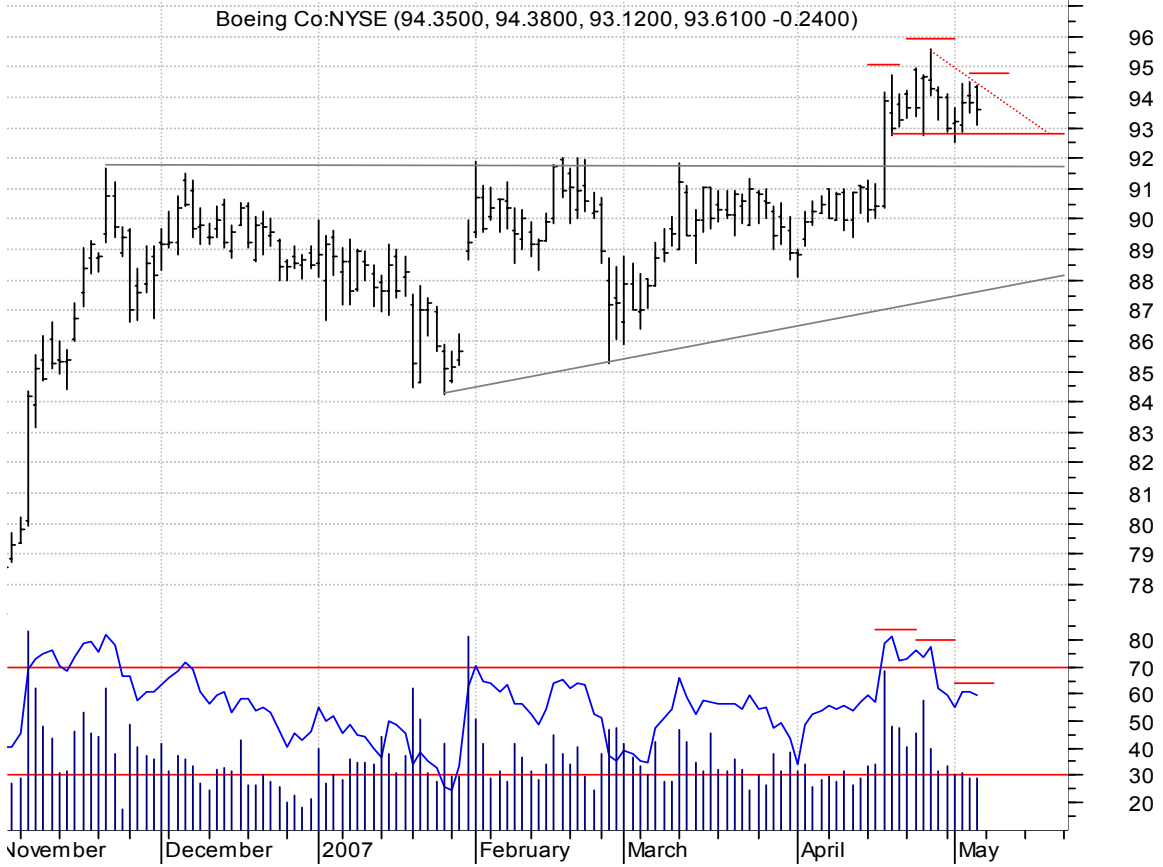
ALGN bull pennant / buy on upside brkout on increased volume



ALJ symm. tri. / buy on upside brkout on increased volume

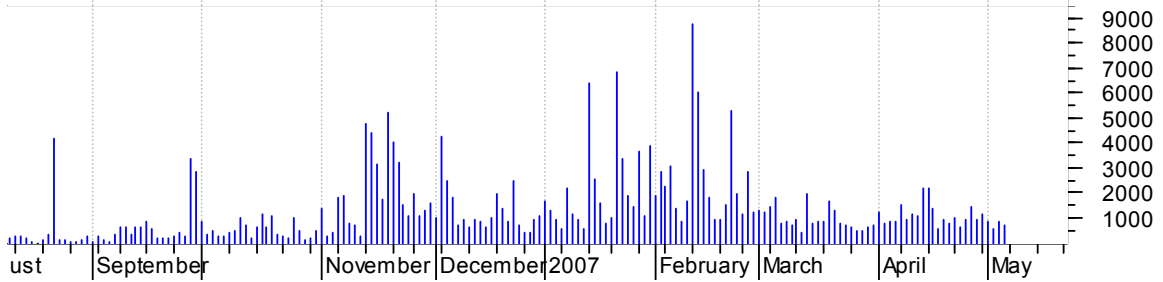


**BA h. & sh. / 1) sell on downside brkout on increased volume or
2) buy on upside brkout thru dotted red line on increased volume
(h. & sh. failures often times brkout sharply to the upside)**



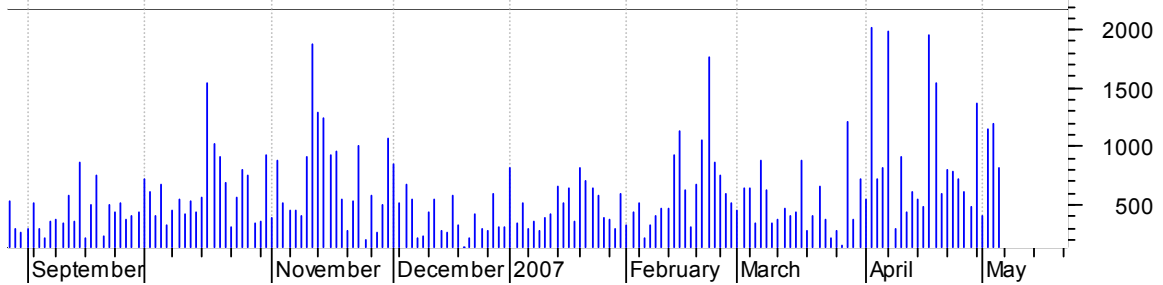
CHDX falling wedge / buy on upside brkout on increased volume

US-China Industr (20.5500, 20.6500, 20.0500, 20.1400 -0.2900)



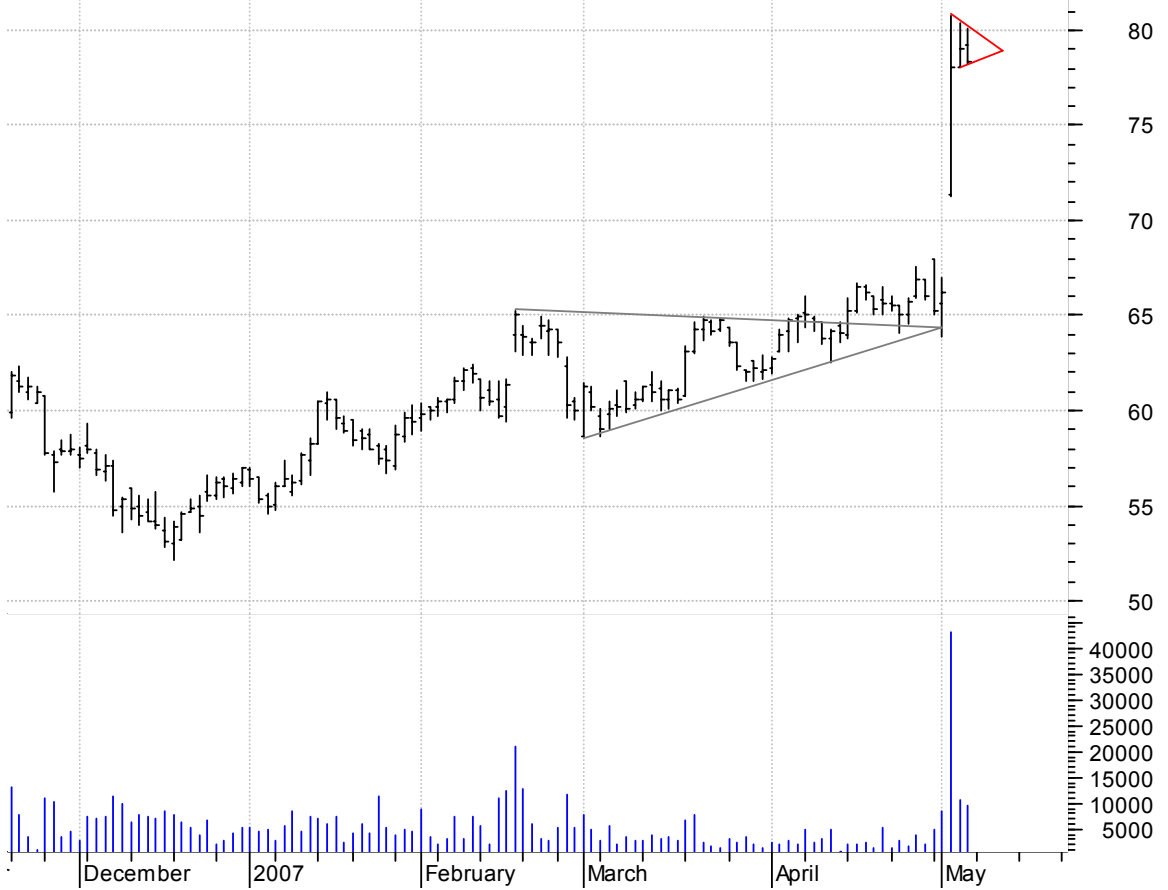
CIR symm. tri. / buy on upside brkout on increased volume

Circor Intl Inc: (37.1000, 37.2400, 36.0700, 36.5200 -0.4100)



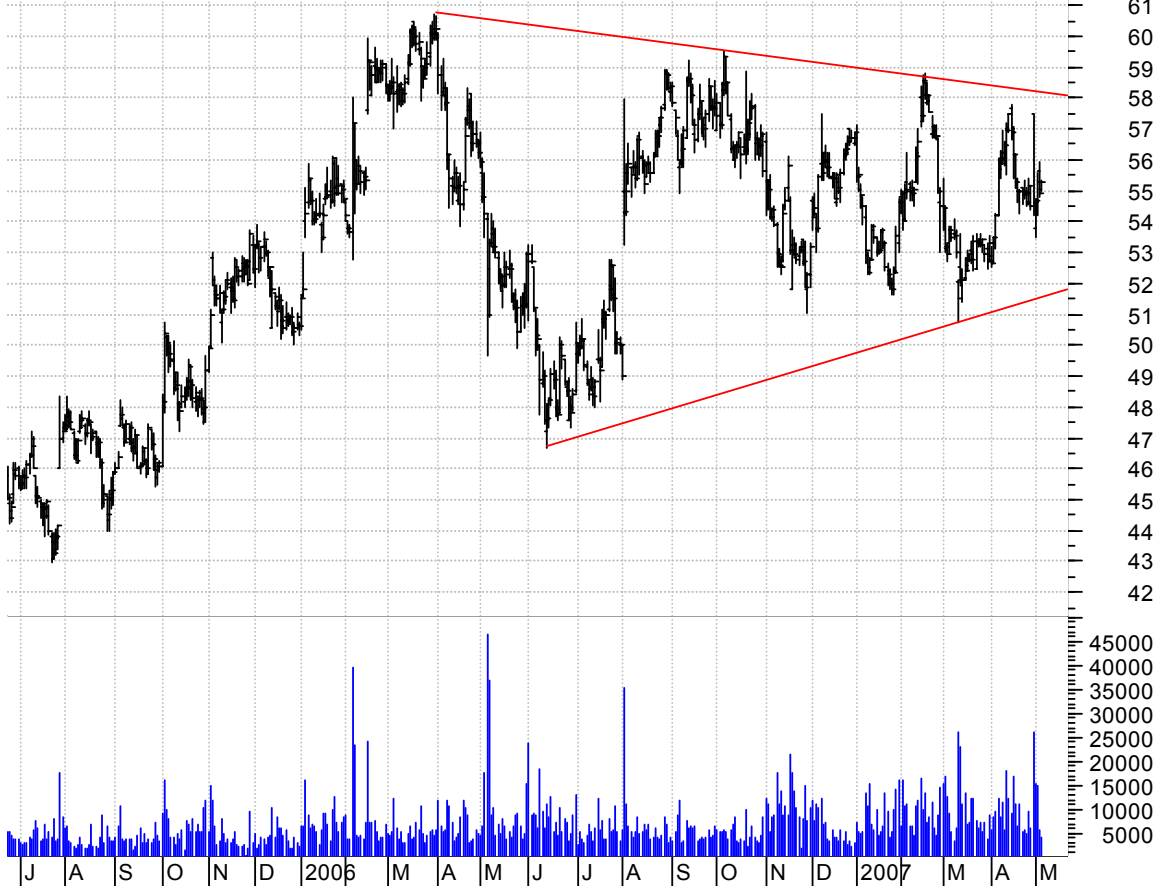
CMG bull pennant / buy on upside breakout on increased volume

CHIPOTLE MEXICAN (79.2400, 80.1000, 78.2600, 78.3700 -0.6400)



DVA symm. tri. / buy on upside breakout on increased volume

Davita Inc:NYSE (55.0500, 55.3300, 55.0000, 55.2500 +0.3600)



FNDT falling wedge / buy on upside breakout on increased volume

Fundtech Corp:OT (15.0000, 15.2900, 15.0000, 15.2500 +0.1500)



HC symm. tri. preceded by 'pole-like' move / buy on upside breakout on increased volume

Hanover Compress (22.6400, 22.7500, 22.3200, 22.5500 -0.0200)



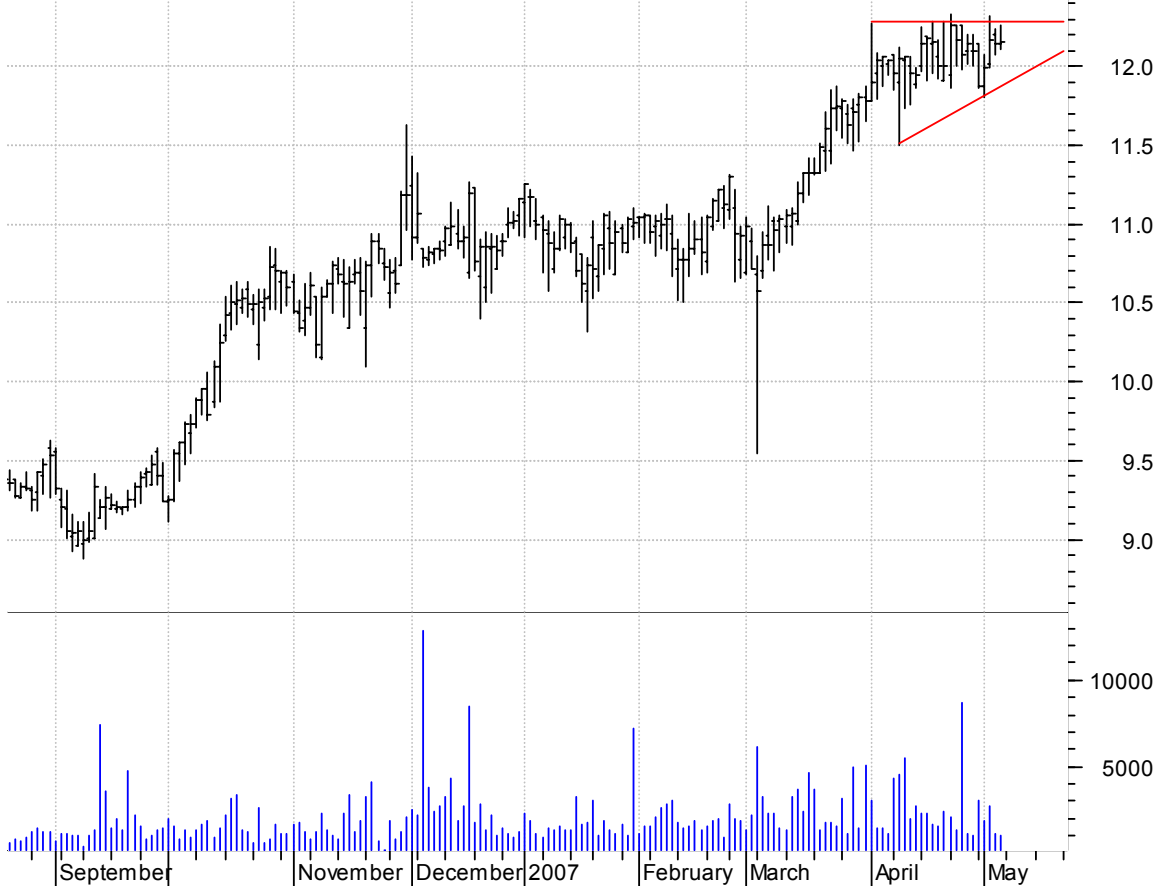
HMSY bullish flagging / buy on upside brkout on increased volume

HMS Management:O (21.4700, 22.8000, 20.8600, 22.3900 +0.9100)



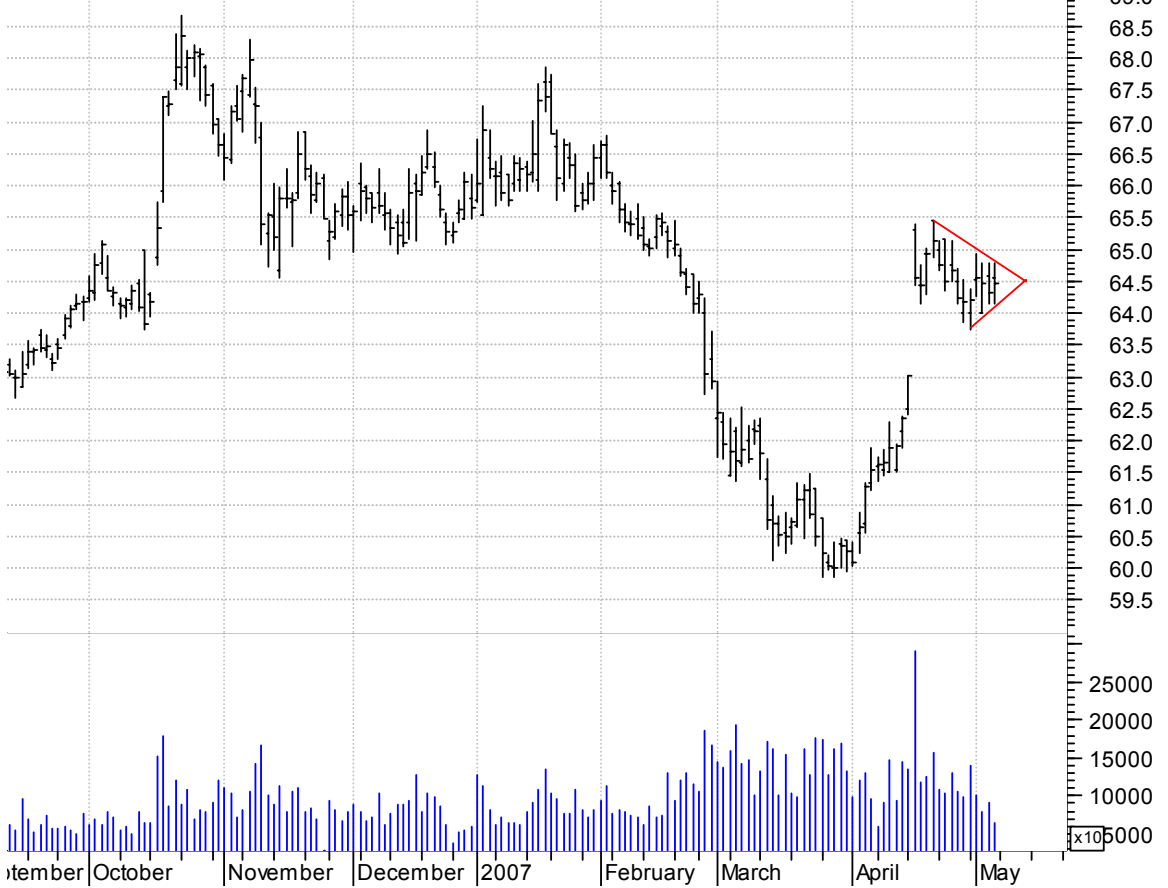
HT asc. tri. / buy on upside brkout on increased volume

Hersha Hospitali (12.1500, 12.2600, 12.1100, 12.1600 +0.0100)



JNJ symm. tri. preceded by 'pole-like' move / buy on upside brkout on increased volume

Johnson & Johnso (64.5600, 64.7900, 64.1600, 64.4800 +0.1600)



LH bull flag / buy on upside brkout on increased volume

Laboratory Corp (78.3000, 78.5000, 77.8600, 78.1400 +0.2600)



MO bullish flagging / buy on upside brkout on increased volume

Altria Group:NYS (70.0400, 70.1500, 69.0000, 69.3600 -0.4100)



MORN asc. tri. / buy on upside brkout on increased volume

MORNINGSTAR INC: (51.1300, 51.5400, 50.8800, 51.5400 +0.4200)



NWS symm. tri. / buy on upside breakout on increased volume

News Corp Ltd AD (23.4300, 23.6800, 23.4000, 23.5800 +0.1400)



NXTM sloppy asc. tri. / buy on upside breakout on increased volume

NXSTAGE MEDICAL (13.6100, 13.7000, 13.4300, 13.5900 +0.0400)



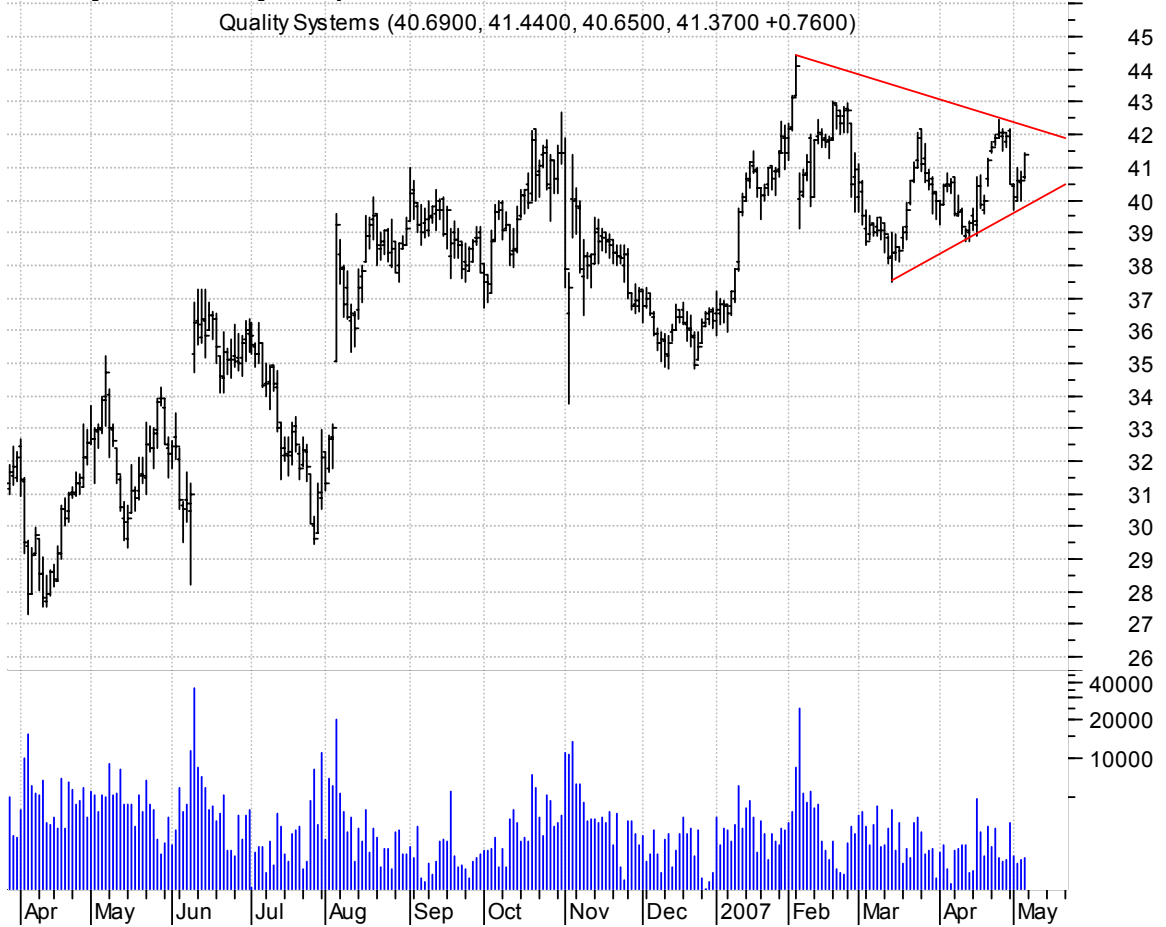
PLXS bullish pennant / buy on upside brkout thru dotted red line on increased volume

Plexus Cp:OTC (21.5200, 21.7200, 21.2100, 21.6800 +0.2700)



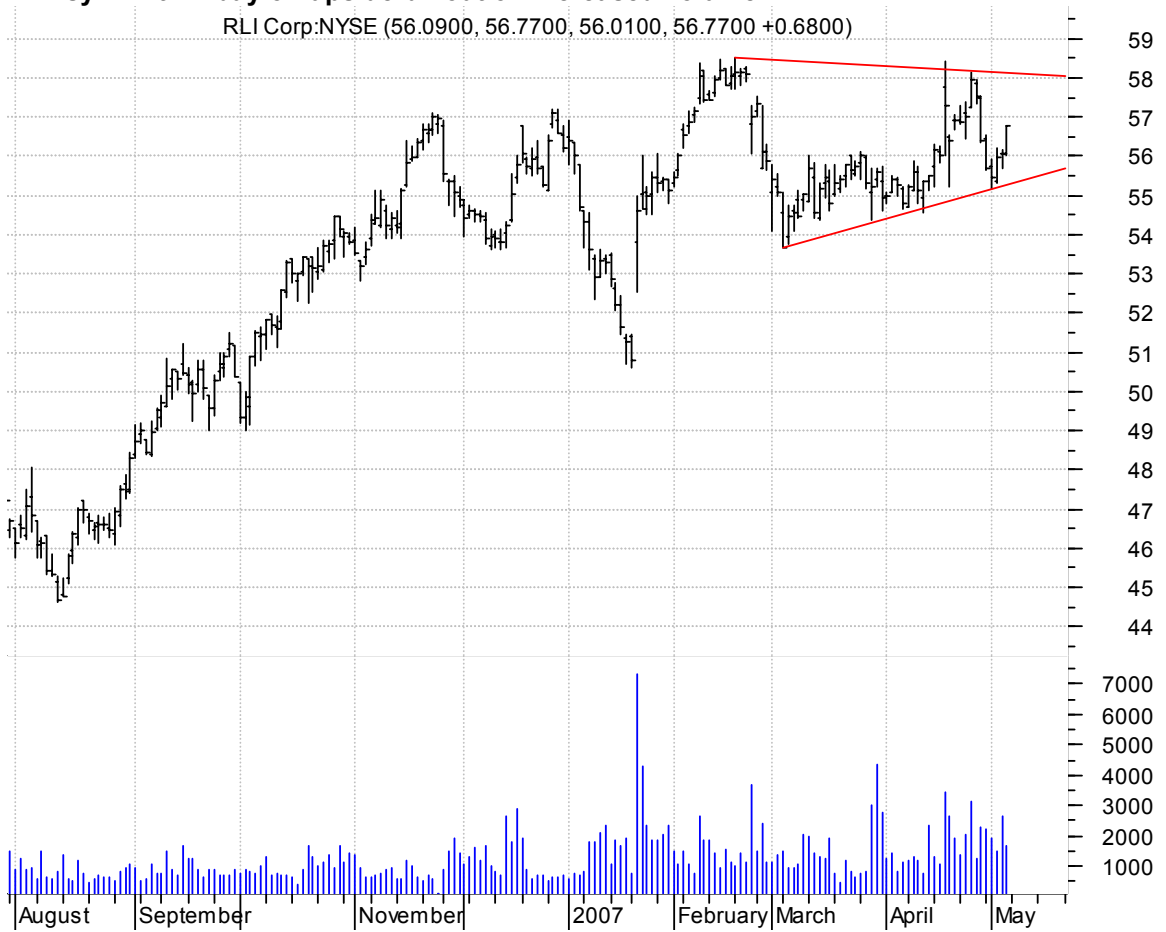
QSII symm. tri. / buy on upside brkout on increased volume

Quality Systems (40.6900, 41.4400, 40.6500, 41.3700 +0.7600)



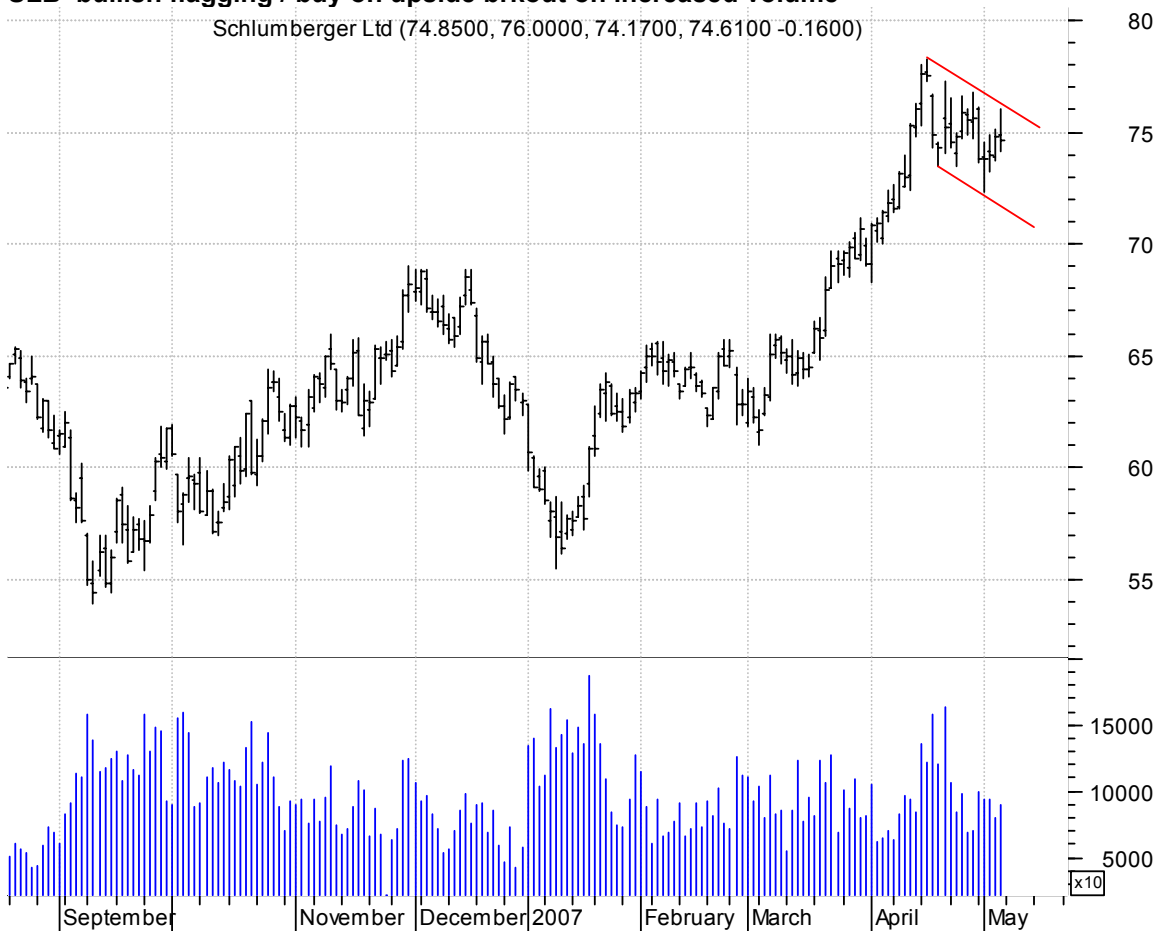
RLI symm. tri. / buy on upside breakout on increased volume

RLI Corp:NYSE (56.0900, 56.7700, 56.0100, 56.7700 +0.6800)



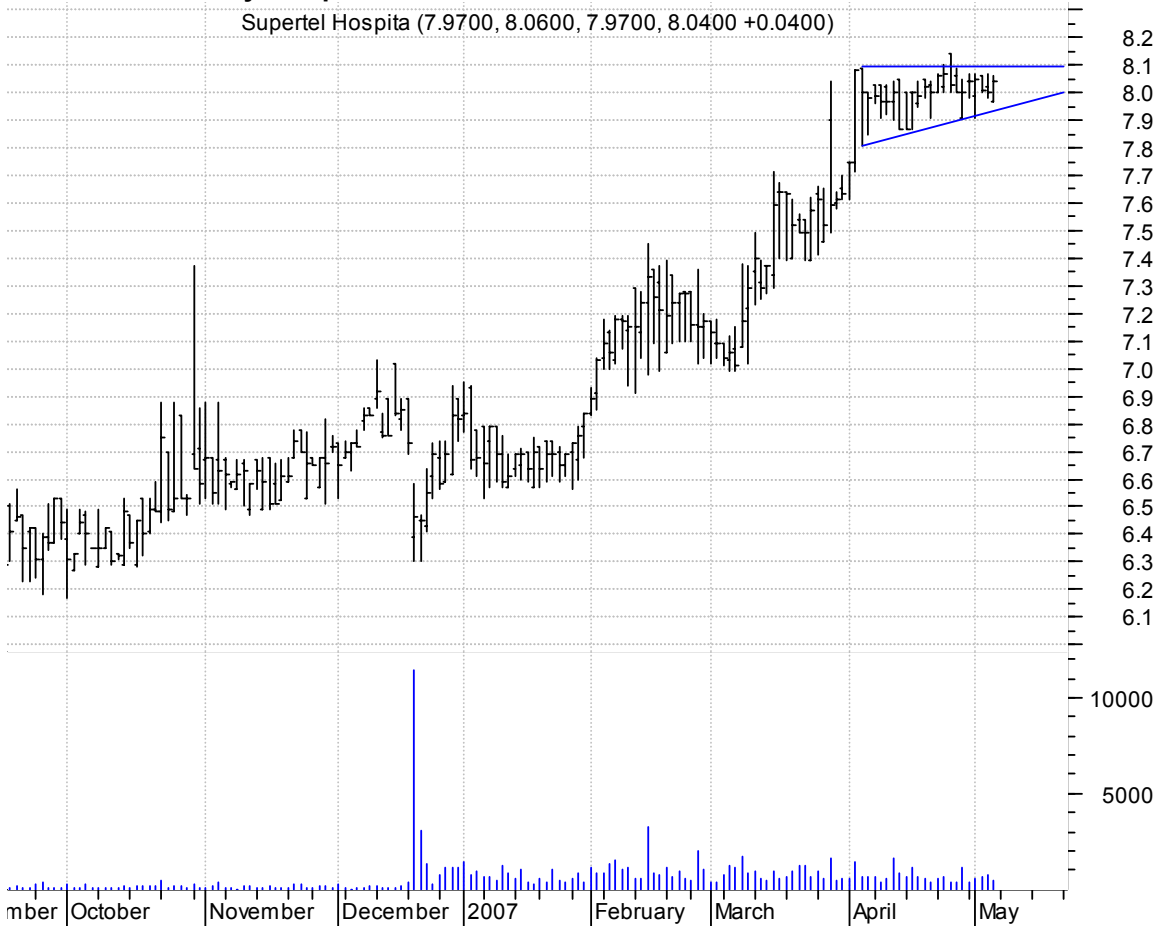
SLB bullish flagging / buy on upside breakout on increased volume

Schlumberger Ltd (74.8500, 76.0000, 74.1700, 74.6100 -0.1600)



SPPR asc. tri. / buy on upside brkout on increased volume

Supertel Hospita (7.9700, 8.0600, 7.9700, 8.0400 +0.0400)



SVLF symm. tri. / buy on upside brkout on increased volume

SILVERLEAF RESOR (5.0500, 5.0500, 4.8600, 5.0100 -0.0300)



TMO bull pennant / buy on upside brkout on increased volume

Thermo Fisher Sc (53.0100, 53.2000, 52.3500, 52.5400 -0.3600)



TU bullish flagging / buy on upside brkout on increased volume

TELUS CP NON VTG (54.7800, 55.4500, 54.7800, 55.3000 +0.9500)



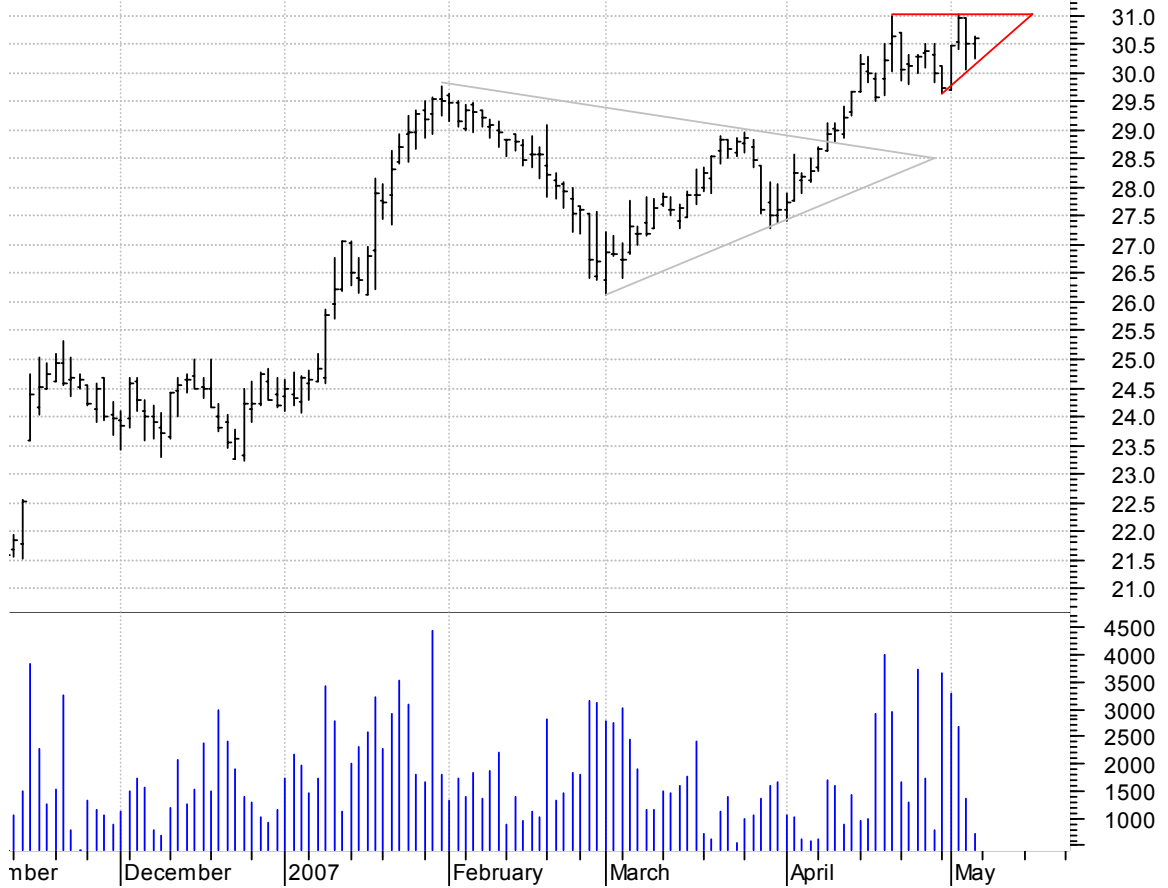
VDSI bull pennant / buy on upside brkout on increased volume

Vasco Data Secur (21.5000, 21.5400, 21.0600, 21.4000 +0.0100)



VIVO asc. tri. / buy on upside brkout on increased volume

Meridian Bioscie (30.5000, 30.6300, 30.2400, 30.6100 +0.1200)



VMI symm. tri. preceded by 'pole-like' move / buy on upside breakout on increased volume

Valmont Ind Inc: (64.1000, 64.3800, 63.4900, 64.2100 +0.0500)



chartpatterns.com
Chart Pattern Analysis for Timing the Markets

KMatras@aol.com