

**ACL falling wedge brkout / buy on upside continuation thru dotted red line on larger than norm. vol.**



**ARG bull flag / buy on upside brkout on increased volume**



**BDC asc. tri. / buy on upside brkout on increased volume**

Belden CDT:NYSE (56.6900, 57.1800, 56.2000, 56.9300 +0.1300)



**CDI symm. tri. preceded by 'pole-like' move / buy on upside brkout on increased volume**

CDI Corp:NYSE (32.3600, 32.4000, 31.8700, 32.2700 +0.0200)



**DGII symm. tri. / buy on upside brkout on increased volume**

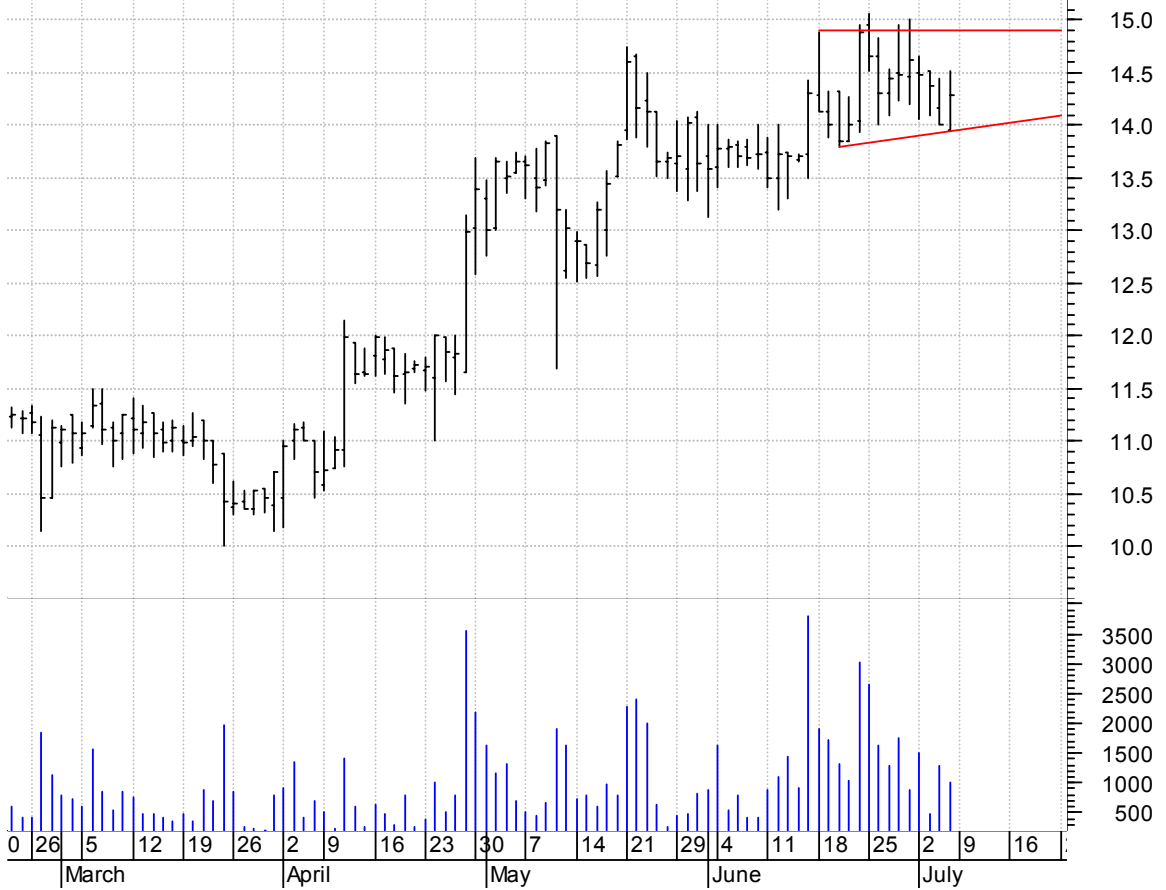


**EPG bull flag / buy on upside brkout on increased volume**



**GCOM sloppy asc. tri. / buy on upside brkout on increased volume**

Globecomm System (13.9600, 14.5200, 13.9600, 14.2900 +0.2900)



**IFSLA falling wedge preceded by 'pole-like' move / buy on upside brkout on increased volume**

Interface Inc Cl (18.8300, 19.1200, 18.7700, 18.9900 +0.1100)



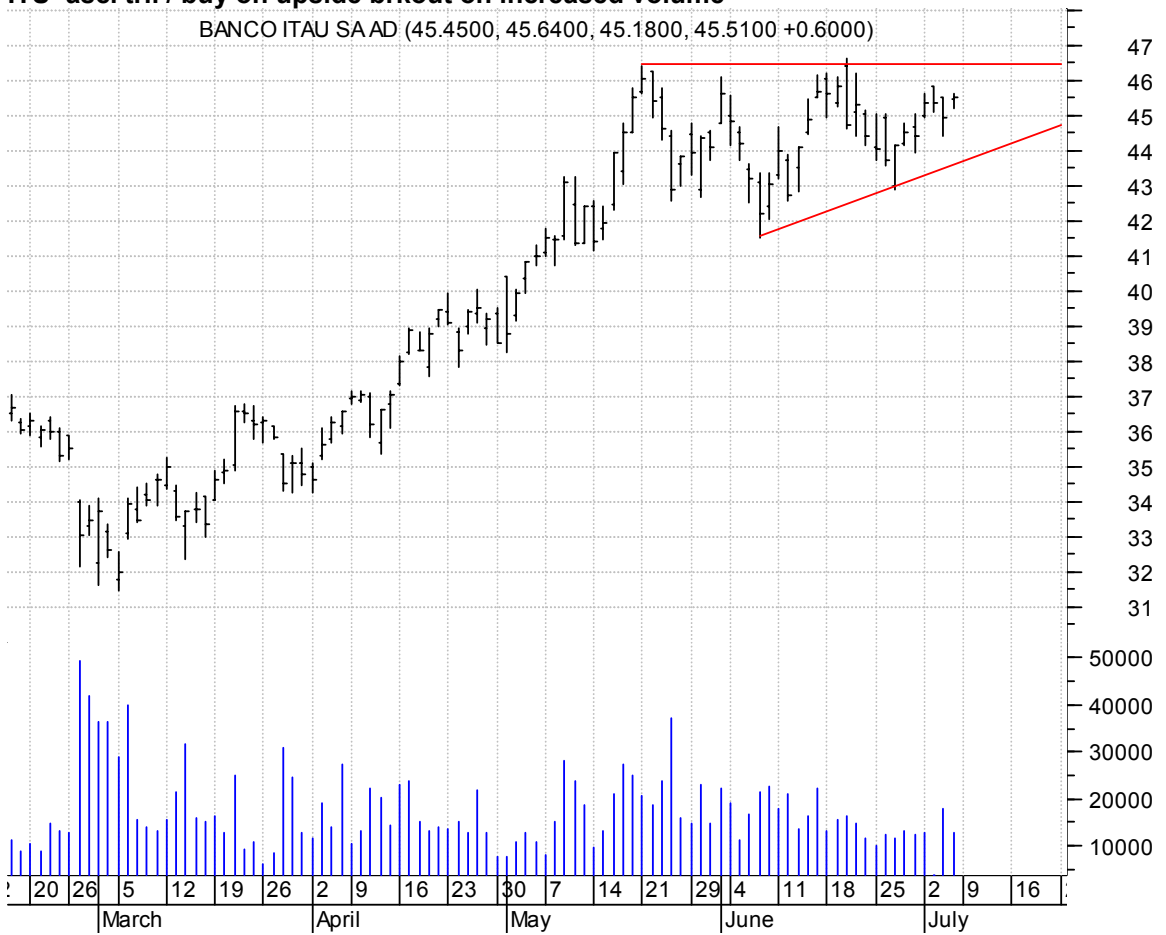
**ILMN symm. tri. / buy on upside brkout on increased volume**

ILLUMINA INC:OTC (41.9900, 42.0000, 41.6700, 41.7900 -0.0700)



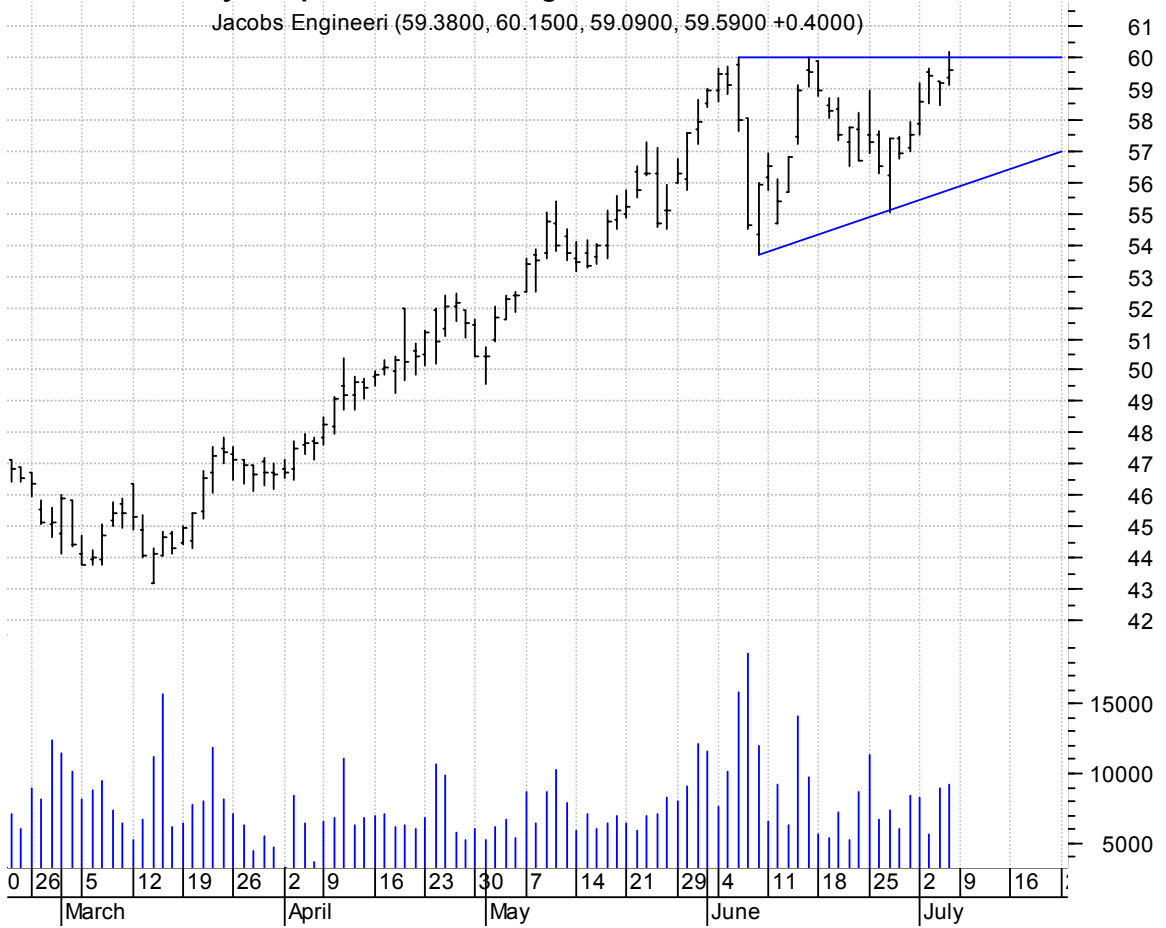
**ITU asc. tri. / buy on upside brkout on increased volume**

BANCO ITAU SAAD (45.4500, 45.6400, 45.1800, 45.5100 +0.6000)



**JEC asc. tri. / buy on upside breakout on larger than normal volume**

Jacobs Engineeri (59.3800, 60.1500, 59.0900, 59.5900 +0.4000)



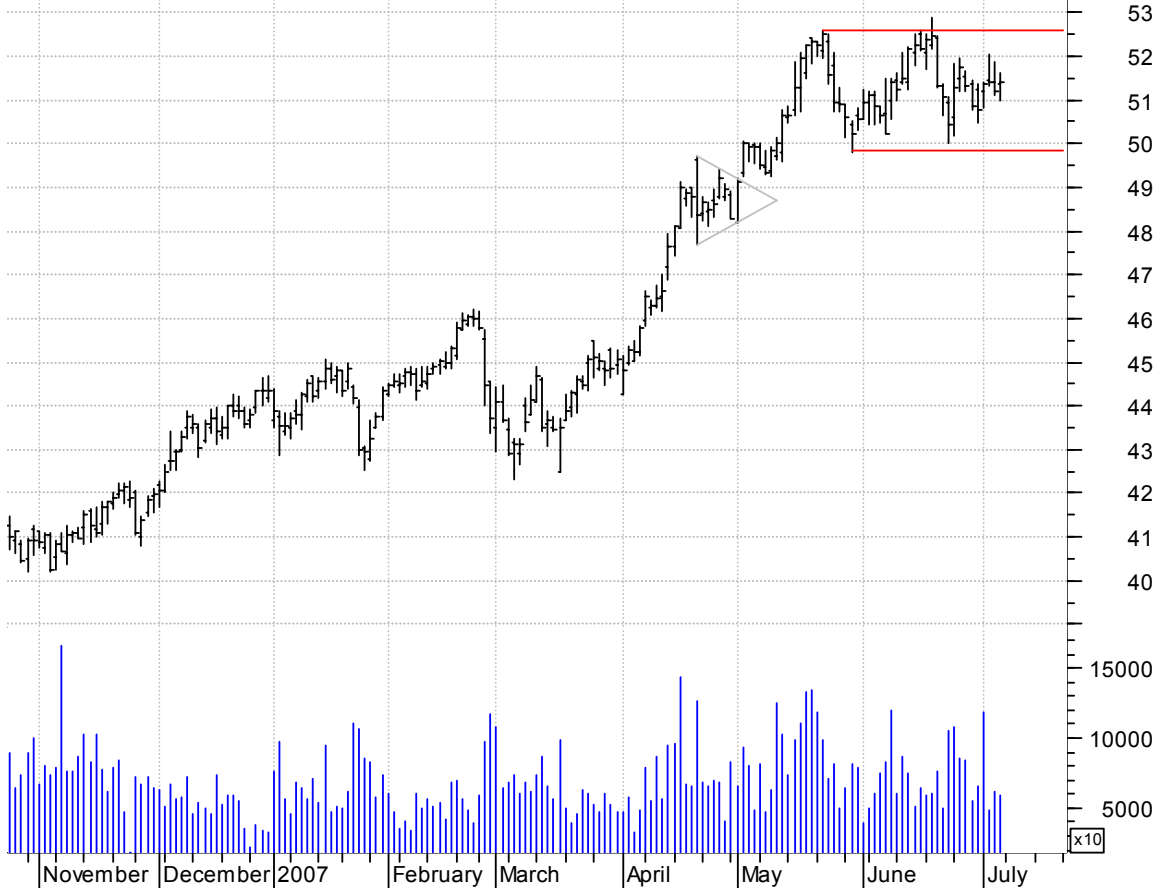
**KO bull flagging / buy on upside breakout on increased volume**

Coca Cola Co:NYS (52.5500, 52.6500, 52.3000, 52.6000 -0.0700)



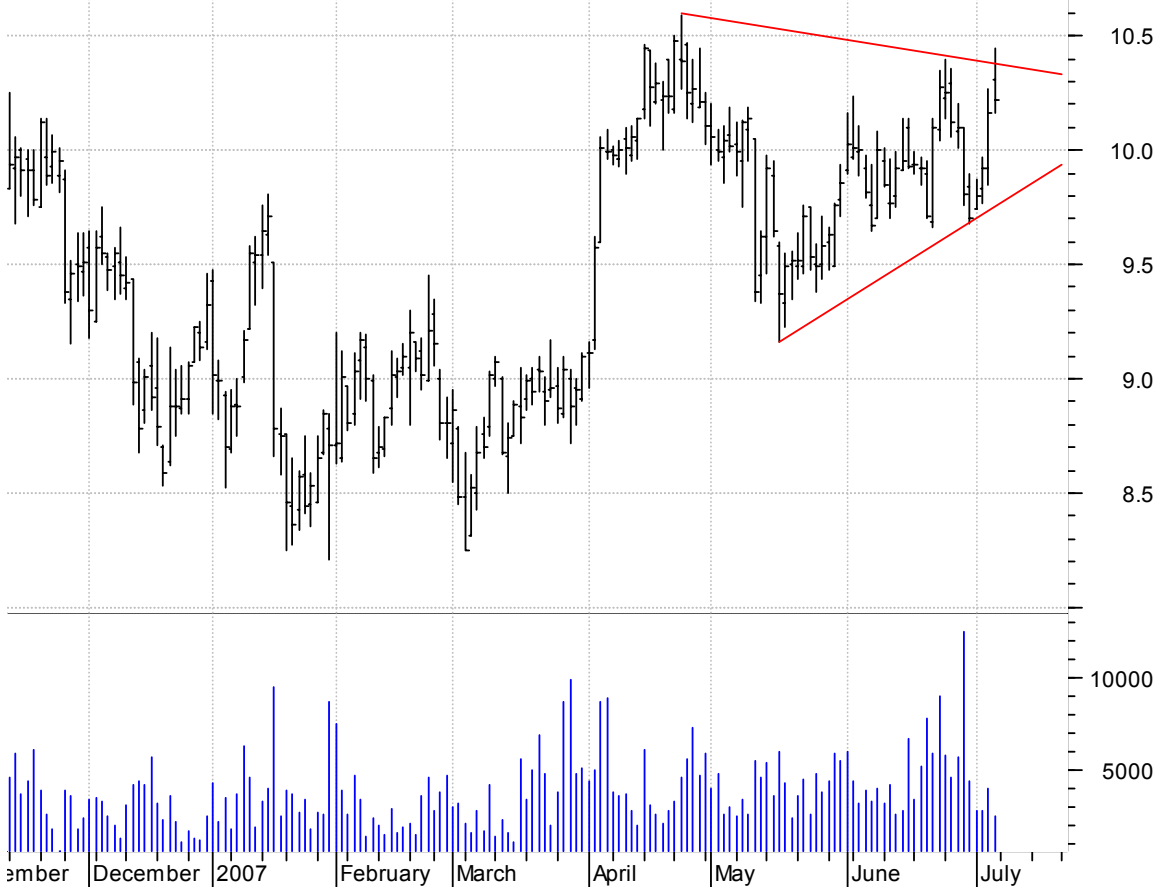
**MCD sloppy rectangle / buy on upside breakout on increased volume**

McDonalds Corp:N (51.3500, 51.6200, 51.0000, 51.4300 +0.2200)



**MTSN symm. tri. / buy on upside breakout on increased volume**

Mattson Technolo (10.3100, 10.4500, 10.1600, 10.2200 +0.0600)



**NTGR sloppy asc. tri. / buy on upside breakout on increased volume**

NETGEAR INC:OTC (37.4300, 37.4500, 36.8300, 36.9000 -0.4700)



**PLCM asc. tri. / buy on upside breakout on increased volume**

Polycom Inc:OTC (33.8100, 33.9000, 33.4100, 33.6600 -0.2700)





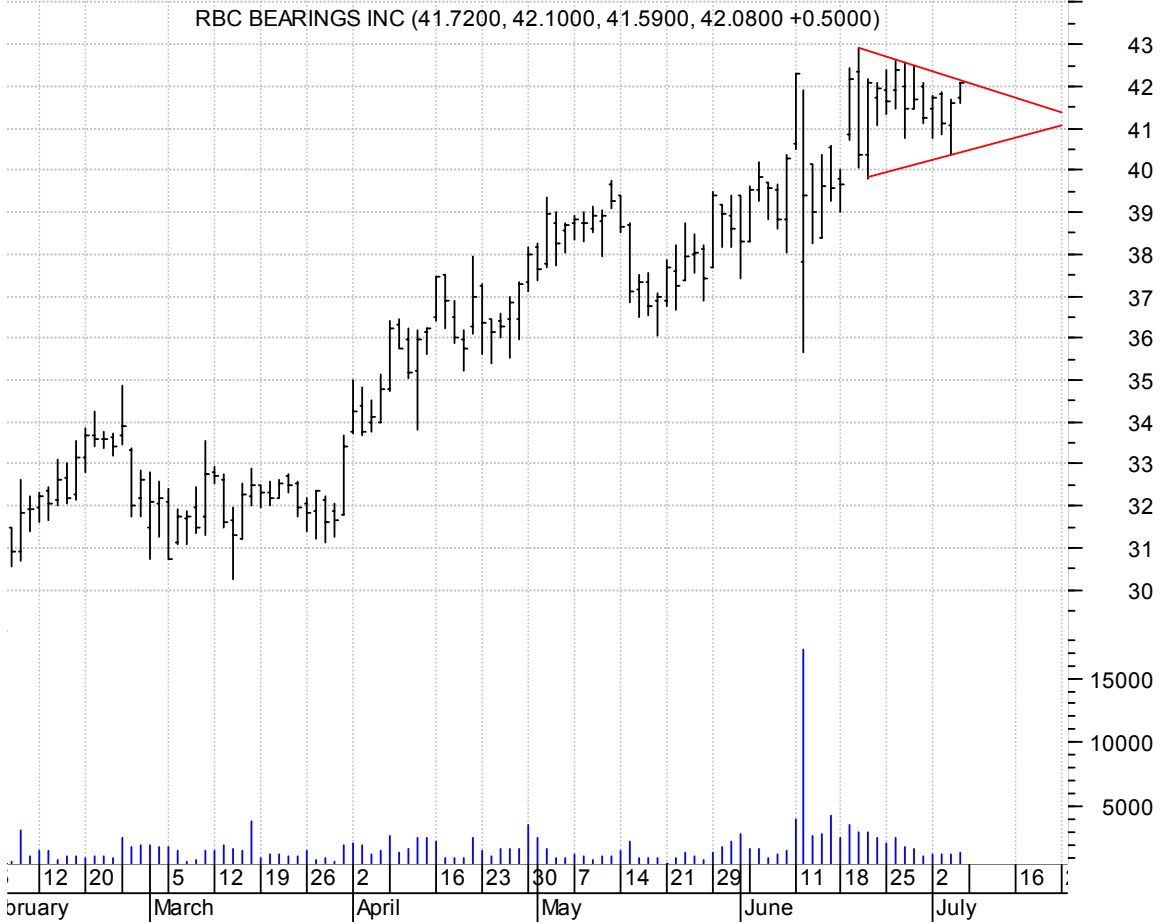
**QRCP symm. tri. preceded by 'pole-like' move / buy on upside brkout on increased volume**



**RCI symm. tri. / buy on upside brkout on increased volume**



**ROLL symm. tri. / buy on upside brkout on increased volume**



**SF symm. tri. preceded by 'pole-like' move / buy on upside brkout on larger than normal volume**



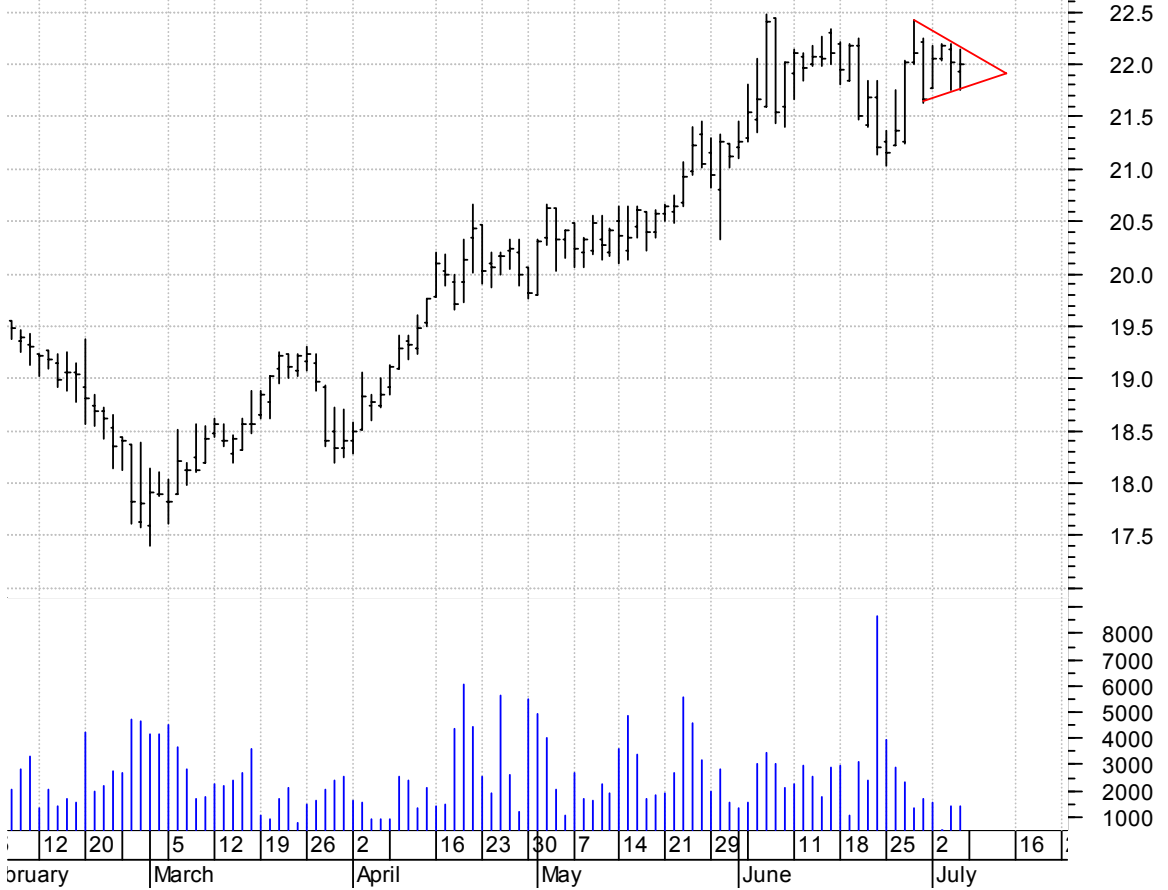
**SPN symm. tri. / buy on upside brkout on increased volume**

Superior Energy (40.4300, 40.4700, 40.0600, 40.2400 +0.1700)



**VIVO symm. tri. / buy on upside brkout on increased volume**

Meridian Bioscie (21.9300, 22.1400, 21.7500, 22.0000 -0.0200)



**chartpatterns.com**  
Chart Pattern Analysis for Timing the Markets

[KMatras@aol.com](mailto:KMatras@aol.com)