

AIR asc. tri. / buy on upside brkout on increased volume

AAR Corporation: (31.7900, 32.8900, 31.7800, 32.8300 +0.9600)

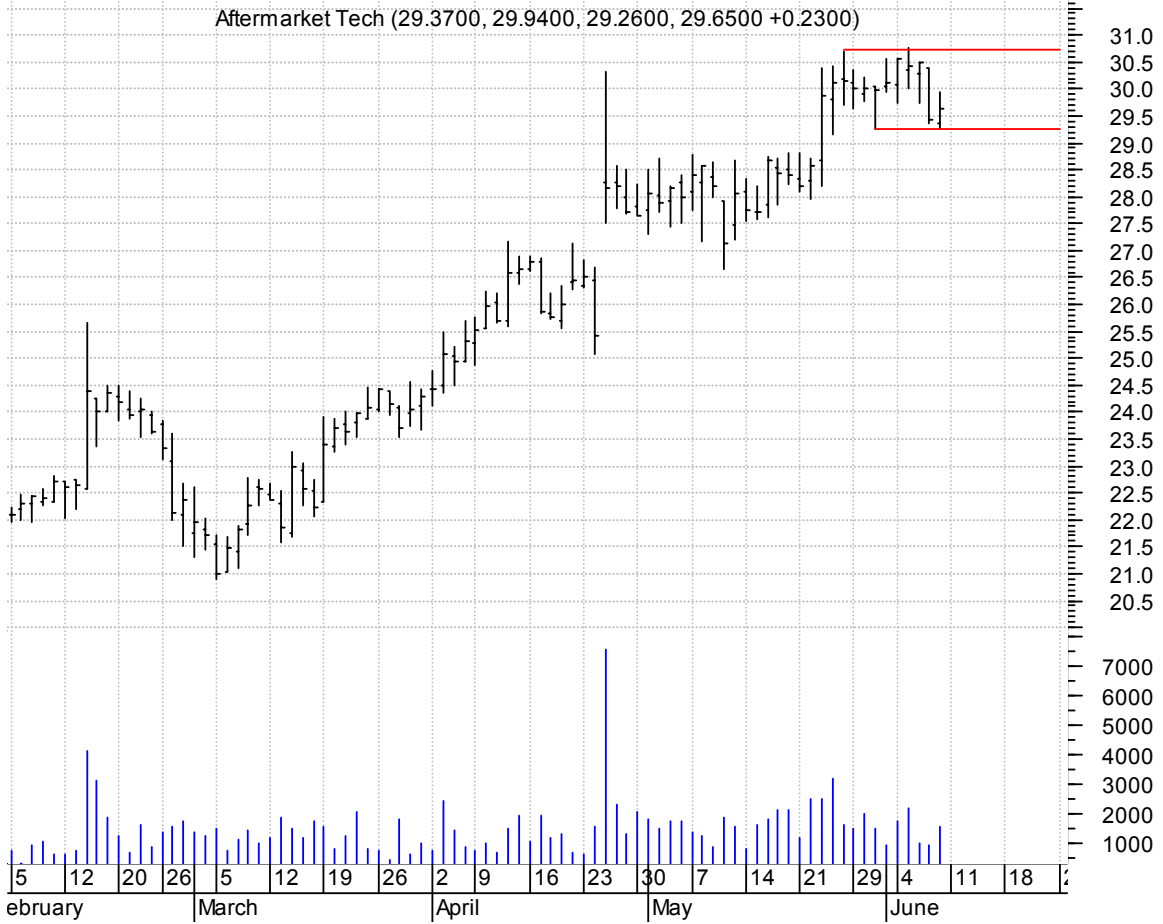


ASTE symm. tri. / buy on upside brkout on increased volume

Astec Ind Inc:OT (42.5500, 42.7400, 41.4000, 42.3500 -0.2100)



ATAC rectangle / buy on upside breakout on increased volume

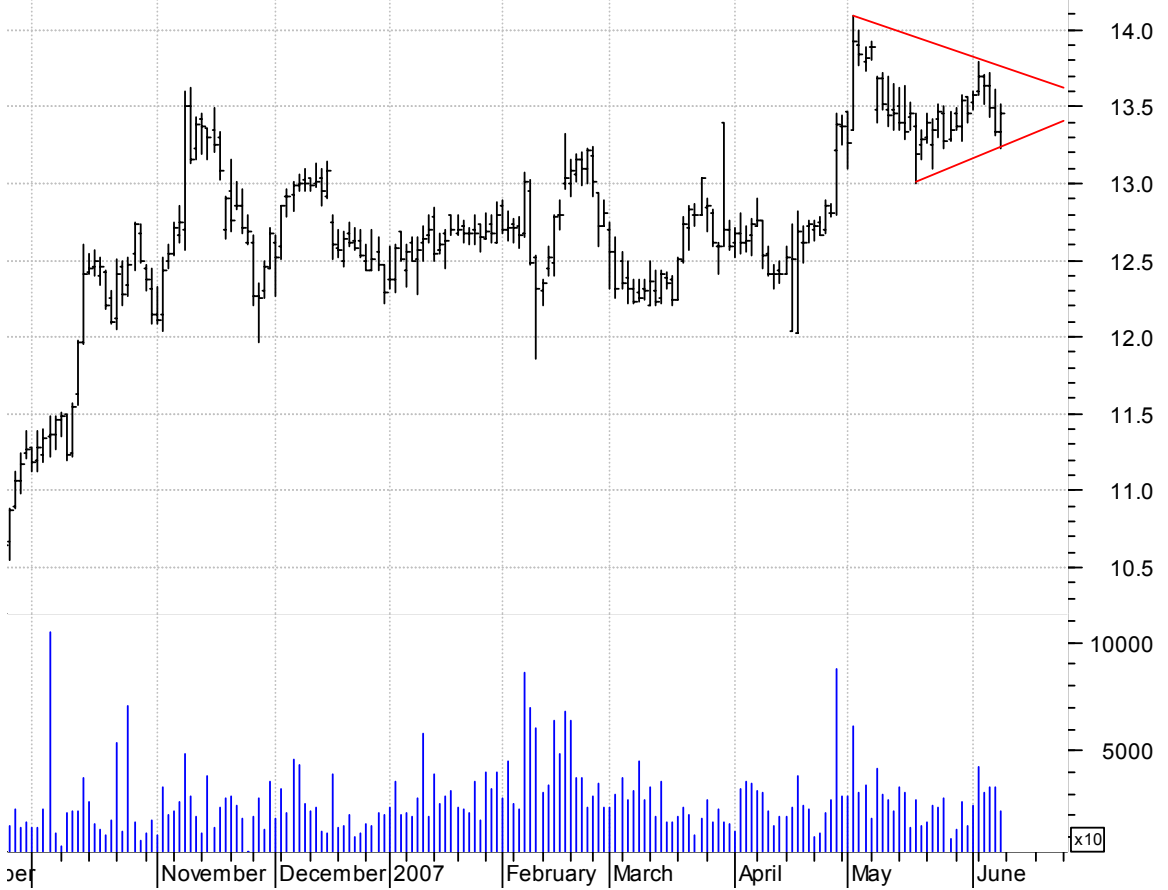


ATI symm. tri. / buy on upside breakout on increased volume



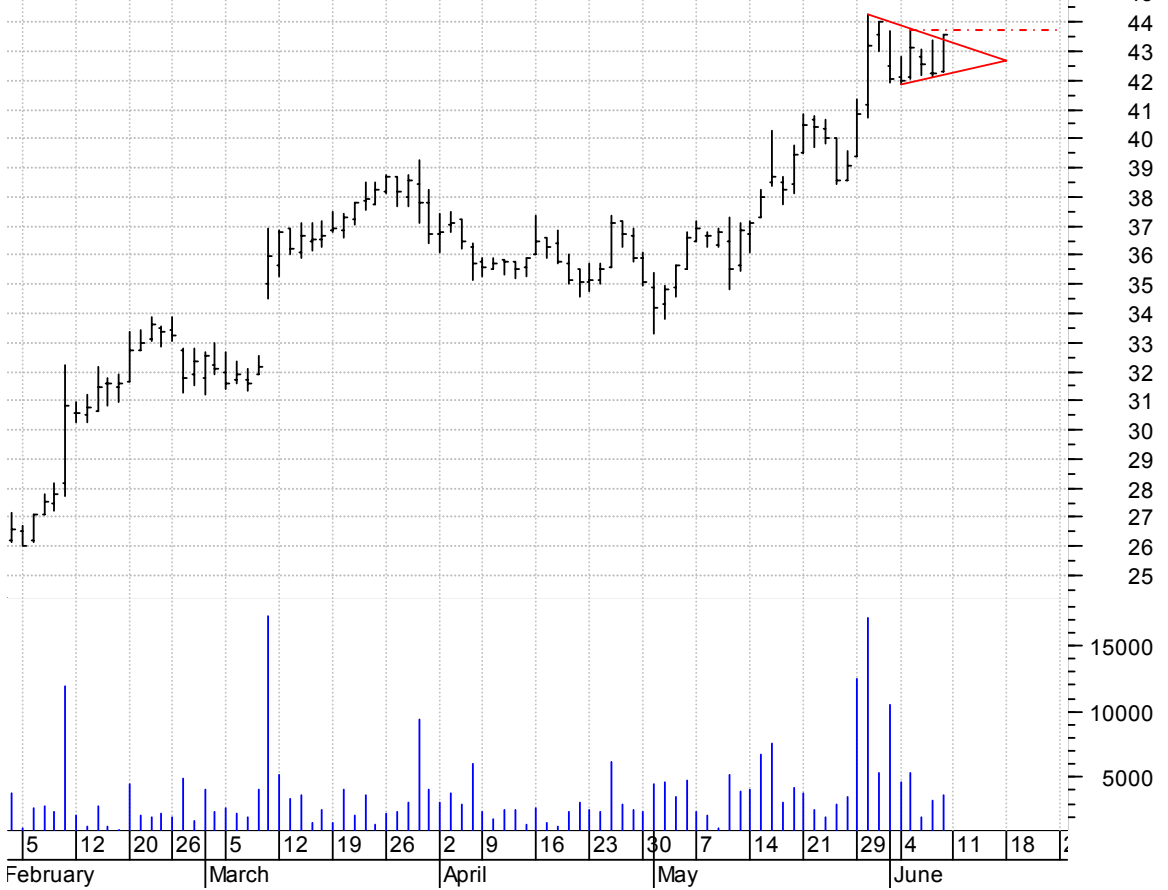
AW symm. tri. preceded by 'pole-like' move / buy on upside brkout on increased volume

Allied Waste Ind (13.3300, 13.5100, 13.2300, 13.4600 +0.1200)



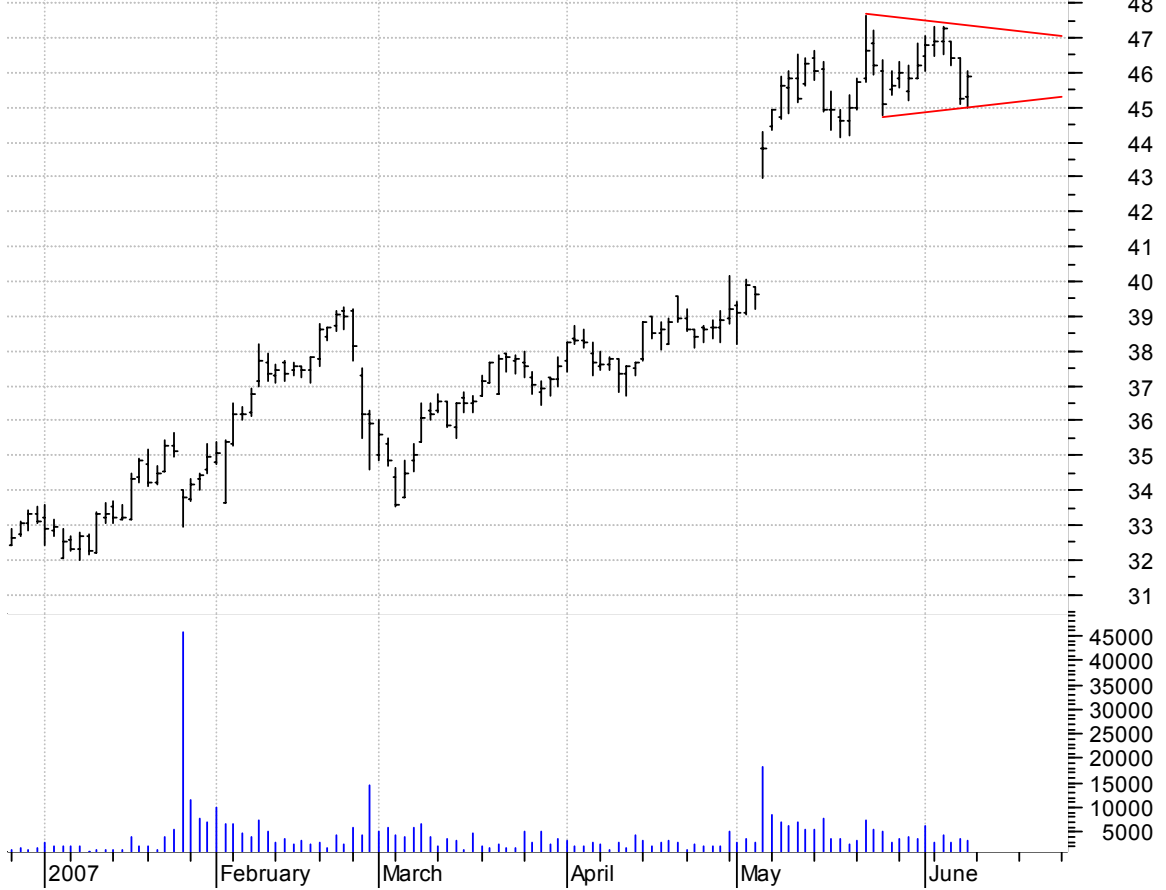
BSCI bull pennant / buy on upside brkout thru dotted red line increased volume

Blue Coat System (42.3000, 43.5700, 42.3000, 43.5600 +1.3200)



BEZ symm. tri. / buy on upside breakout on increased volume

Baldor Electric (45.3200, 46.0500, 45.0000, 45.8900 +0.6400)



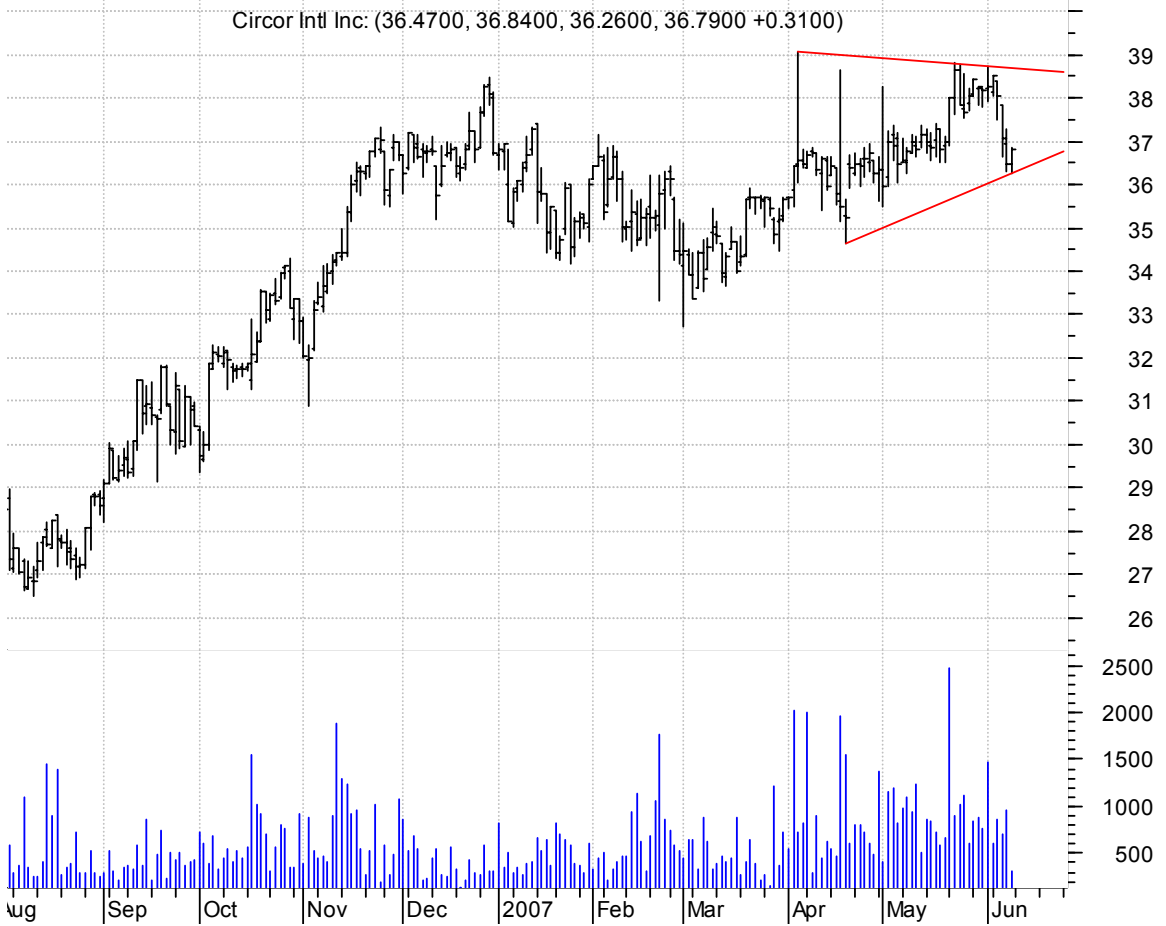
CCK symm. tri. / buy on upside breakout on increased volume

Crown Holdings:N (24.3500, 24.8100, 24.2600, 24.7100 +0.2500)



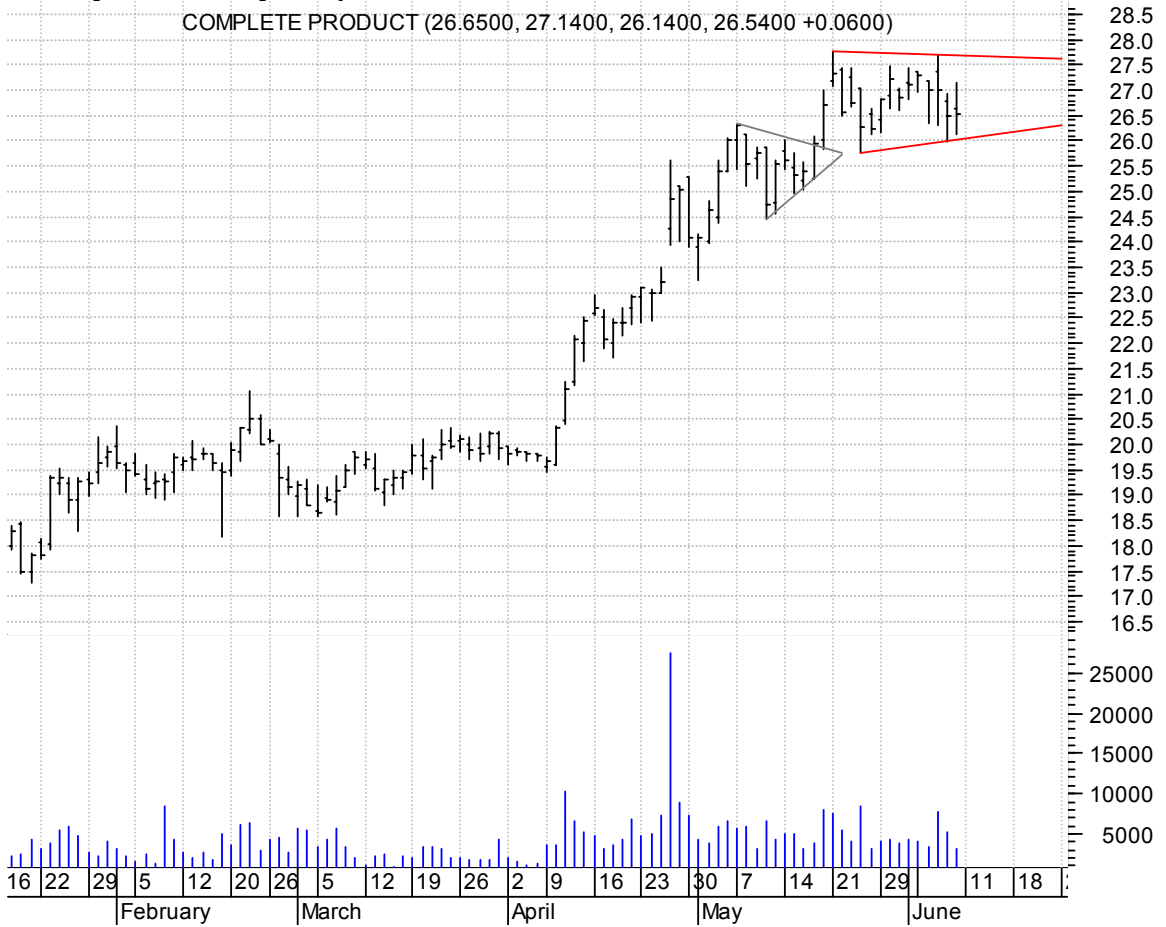
CIR symm. tri. / buy on upside brkout on increased volume

Circor Intl Inc: (36.4700, 36.8400, 36.2600, 36.7900 +0.3100)



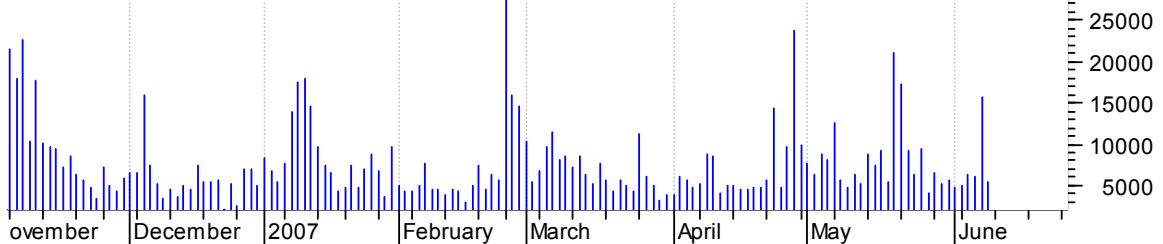
CPX symm. tri. / buy on upside brkout on increased volume

COMPLETE PRODUCT (26.6500, 27.1400, 26.1400, 26.5400 +0.0600)



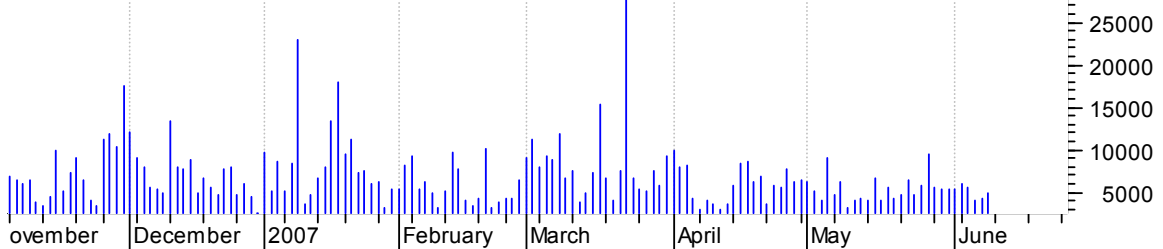
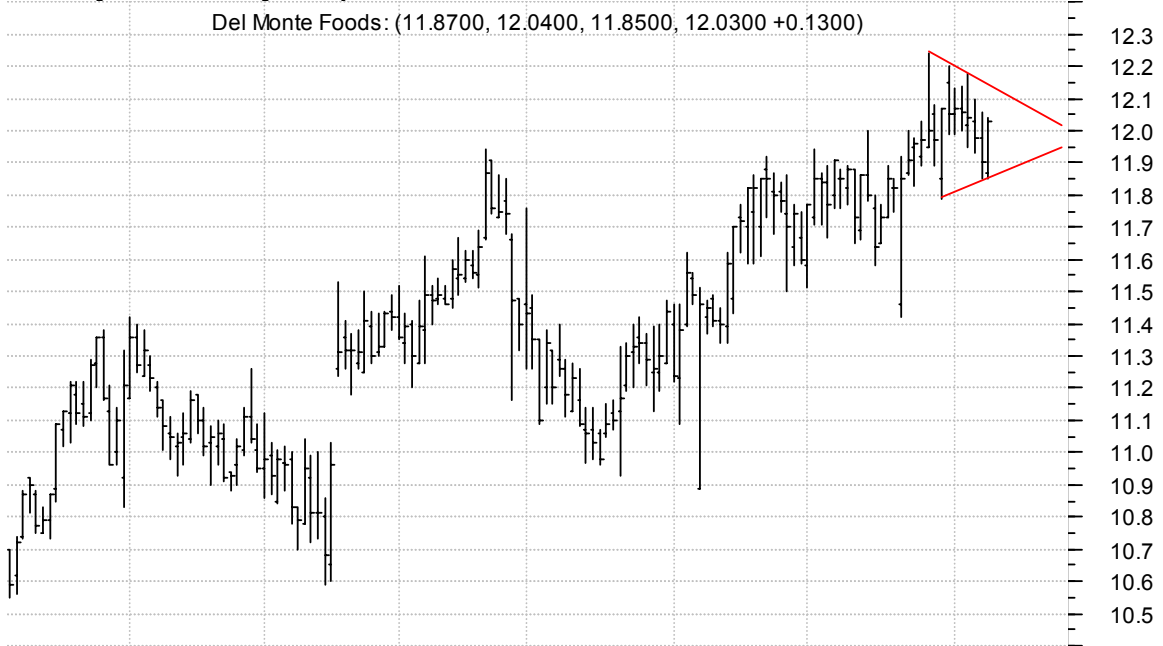
CRDN bullish flagging / buy on upside breakout on increased volume

Ceradyne Inc:OTC (64.3200, 66.4300, 64.1700, 66.3500 +1.7300)



DLM symm. tri. / buy on upside breakout on increased volume

Del Monte Foods: (11.8700, 12.0400, 11.8500, 12.0300 +0.1300)



FMCN asc. tri. preceded by 'pole-like' move / buy on upside brkout on increased volume

Focus Media Hldg (42.9000, 44.2300, 42.0000, 43.9200 +0.9800)



GEL rectangle preceded by 'pole-like' move / buy on upside brkout on increased volume

Genesis Energy L (31.4700, 34.1000, 31.2100, 33.3600 +1.3600)



HAYN symm. tri. / buy on upside breakout on increased volume

Haynes Internati (86.1400, 87.8100, 84.9100, 87.3800 +0.9300)



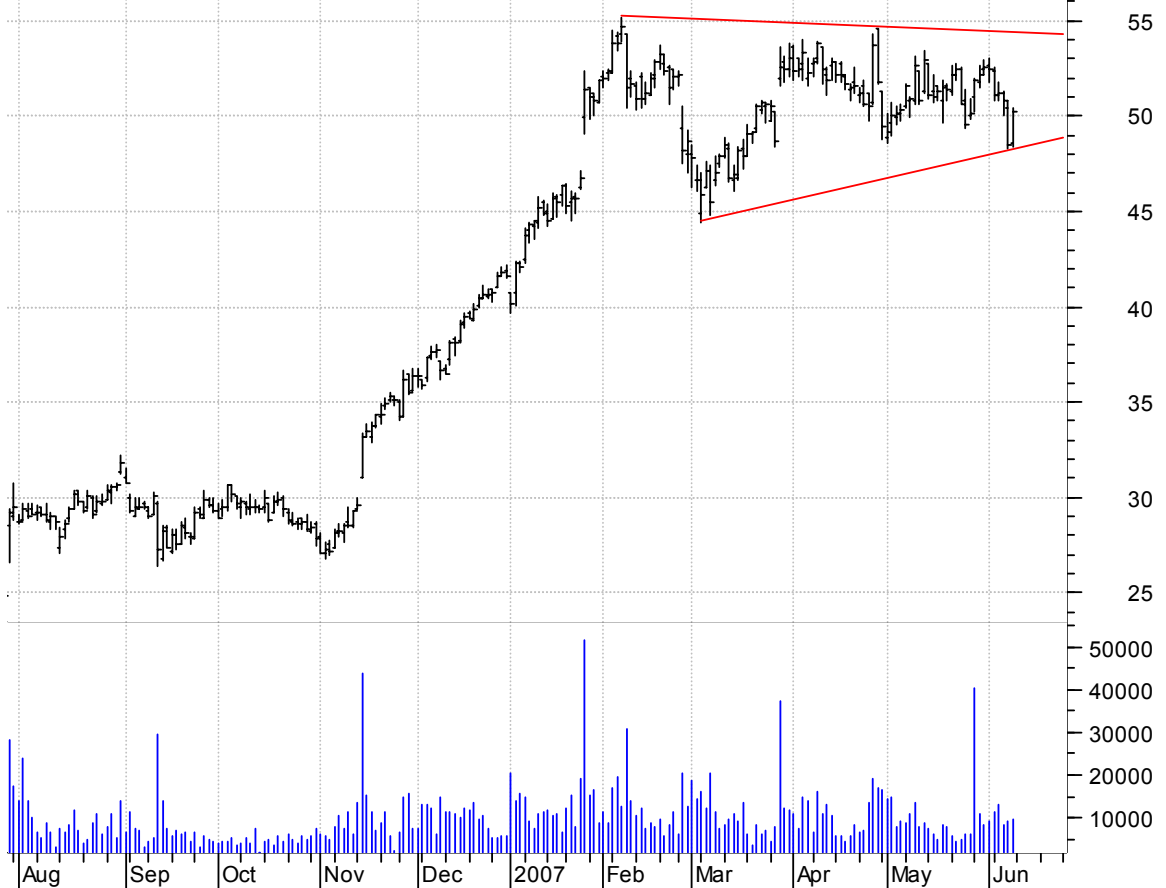
HHGP symm. tri. preceded by 'pole-like' move / buy on upside breakout on increased volume

HUDSON HIGHLAND (21.5000, 21.6800, 21.3000, 21.4700 -0.0300)



NTY symm. tri. preceded by 'pole-like' move / buy on upside breakout on increased volume

NBTY Inc.:NYSE (48.5500, 50.3900, 48.3800, 50.2000 +1.6900)



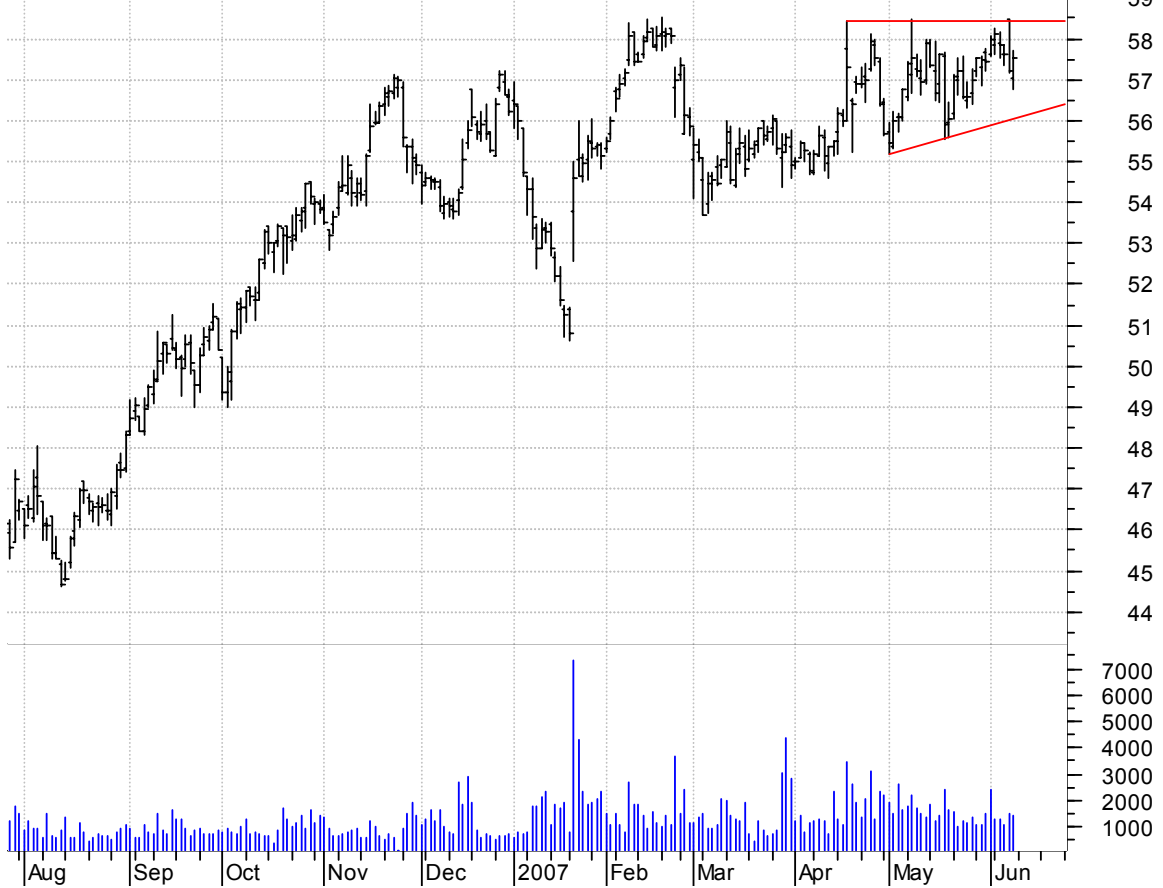
PRGX asc. tri. preceded by 'pole-like' move / buy on upside breakout on increased volume

PRG-Schultz Intl (15.4500, 15.7800, 15.2900, 15.6800 +0.2200)



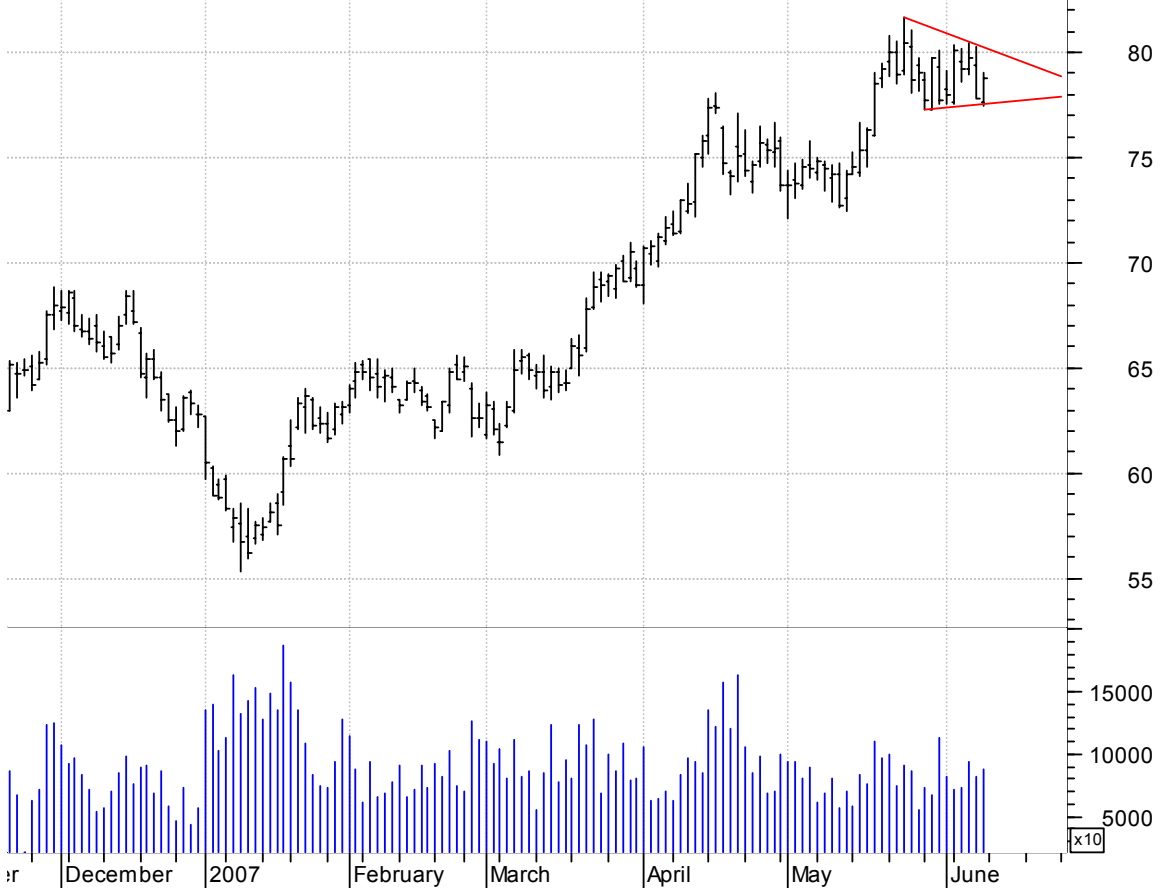
RLI asc. tri. / buy on upside brkout on increased volume

RLI Corp:NYSE (57.0500, 57.6900, 56.7500, 57.5300 +0.3100)



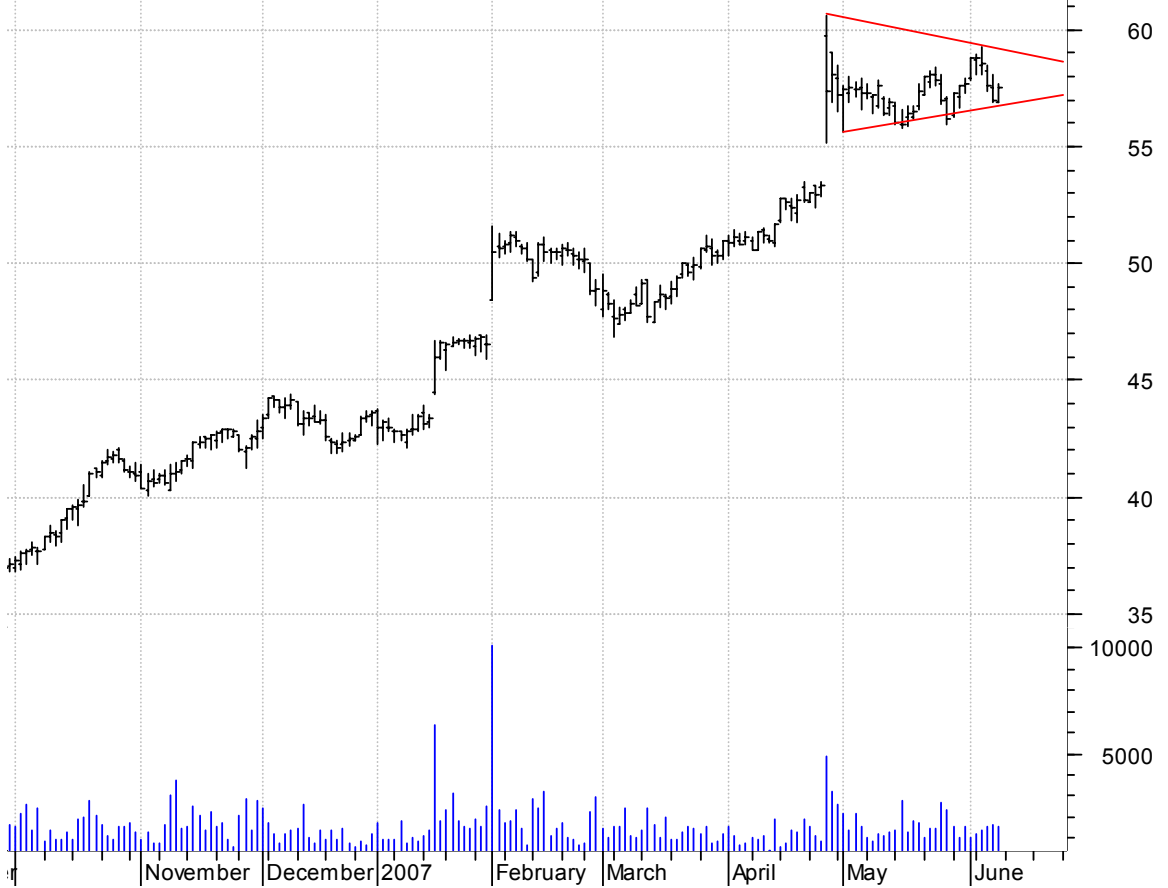
SLB symm. tri. / buy on upside brkout on increased volume

Schlumberger Ltd (77.6400, 79.0000, 77.4500, 78.7600 +0.9800)



SLGN symm. tri. preceded by 'pole-like' move / buy on upside brkout on increased volume

Silgan Holdings (56.9000, 57.6700, 56.8600, 57.5300 +0.5600)



SPH asc. tri. / buy on upside brkout on increased volume

Suburban Propane (47.1000, 47.4200, 46.7000, 47.3500 -0.2000)



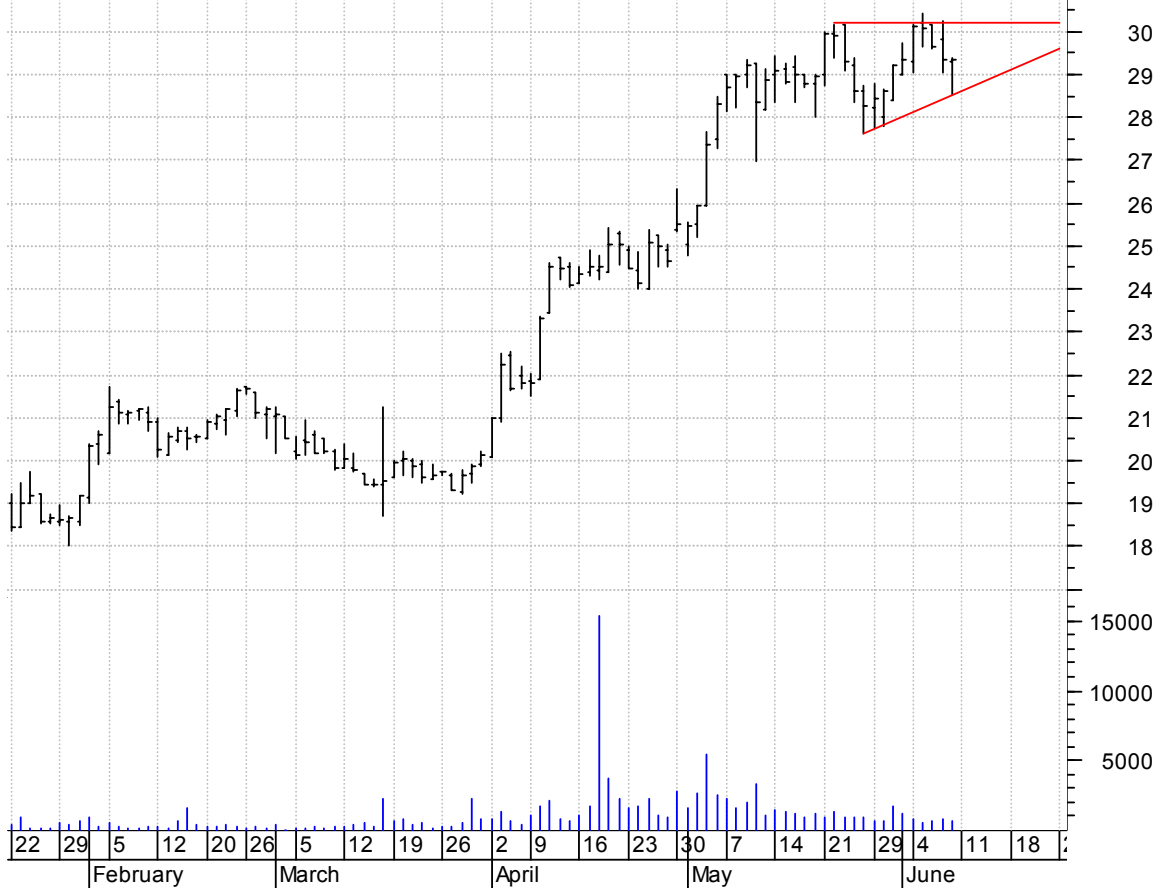
SWIR bull pennant / buy on upside brkout on increased volume

Sierra Wireless (24.0800, 24.3800, 23.5100, 24.3500 +0.6100)



TTEs asc. tri. / buy on upside brkout on increased volume

T-3 Energy Servi (29.3000, 29.3800, 28.5400, 29.3500 -0.0100)



TWI symm. tri. / buy on upside brkout on increased volume



UEIC symm. tri. / buy on upside brkout on increased volume



WHQ bullish flagging / buy on upside breakout on increased volume



chartpatterns.com
Chart Pattern Analysis for Timing the Markets

KMatras@aol.com