

ARII symm. tri. / buy on upside brkout on larger than normal volume

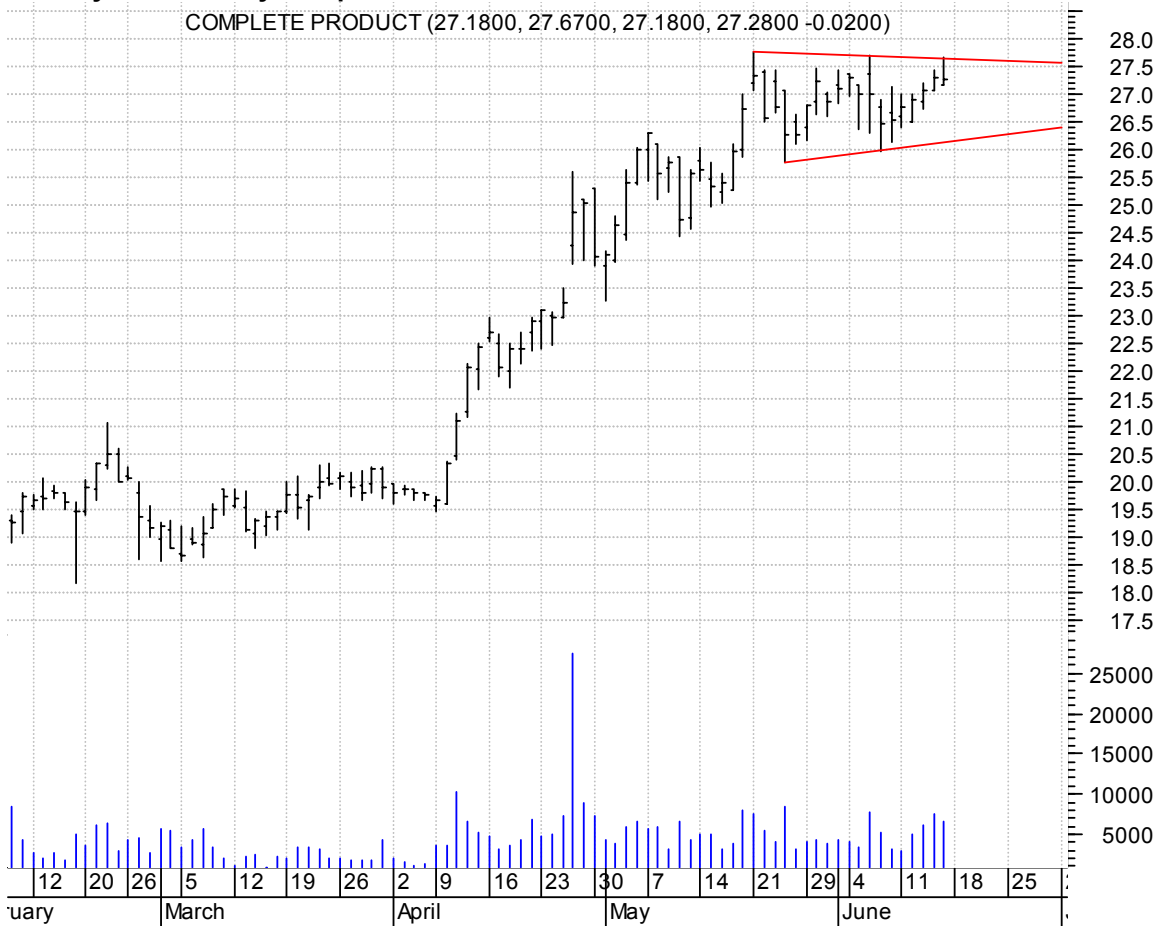


CLB sloppy symm. tri. / buy on upside brkout on increased volume



CPX symm. tri. / buy on upside brkout on increased volume

COMPLETE PRODUCT (27.1800, 27.6700, 27.1800, 27.2800 -0.0200)



FOSL sloppy asc. tri. / buy on upside brkout on increased volume

Fossil Inc.OTC (31.2100, 31.3600, 30.8200, 31.2400 +0.5900)



HDNG symm. tri. / buy on upside brkout on increased volume



HHGP symm. tri. preceded by 'pole-like' move / buy on upside brkout on larger than normal volume



HLEX rectangle / buy on upside breakout on increased volume

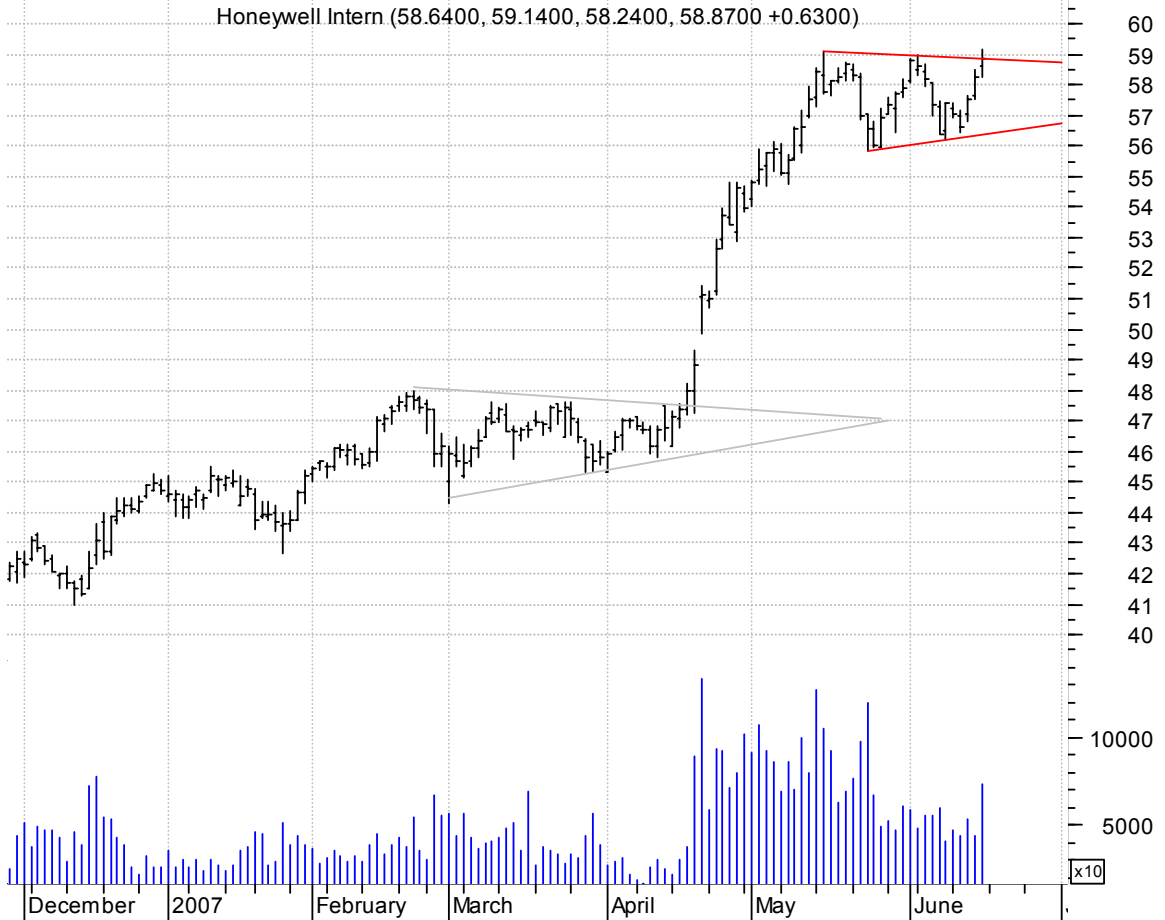


HMSY symm. tri. / buy on upside breakout on increased volume



HON symm. tri. preceded by 'pole-like' move / buy on upside breakout on larger than normal volume

Honeywell Intern (58.6400, 59.1400, 58.2400, 58.8700 +0.6300)



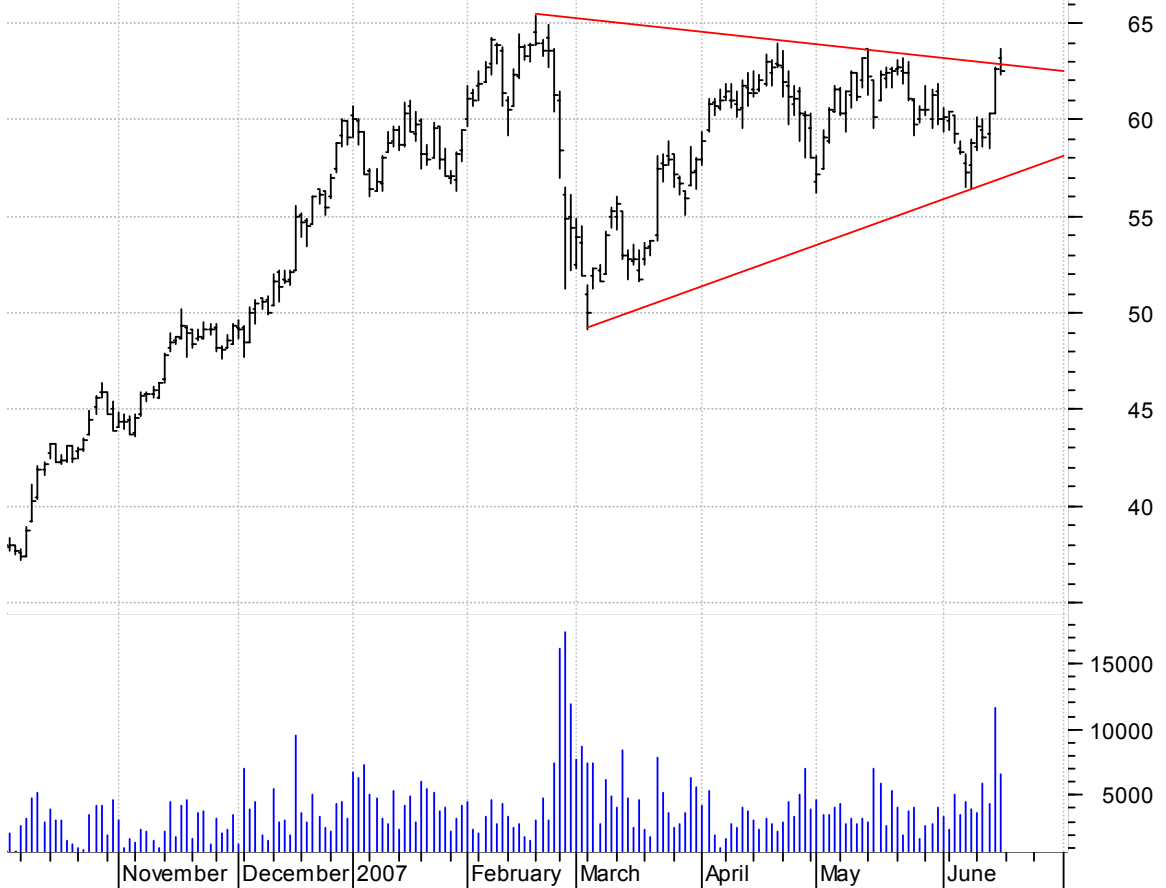
HURN symm. tri. / buy on upside breakout on larger than normal volume

HURON CONSULTING (69.5400, 69.5400, 66.8500, 67.7100 -1.0500)



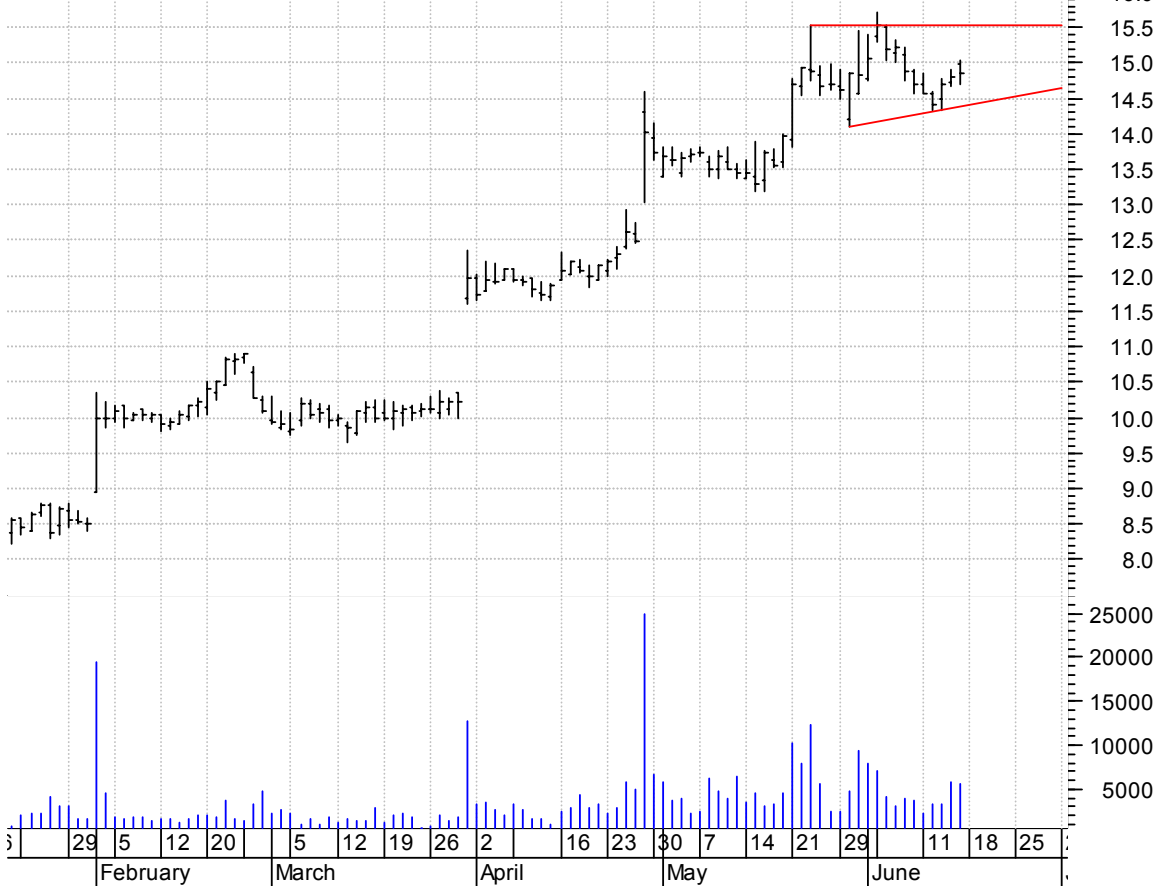
HXM symm. tri. / buy on upside brkout on larger than normal volume

HOMEX DEVELOPMEN (63.2300, 63.6600, 62.3300, 62.4900 -0.1000)



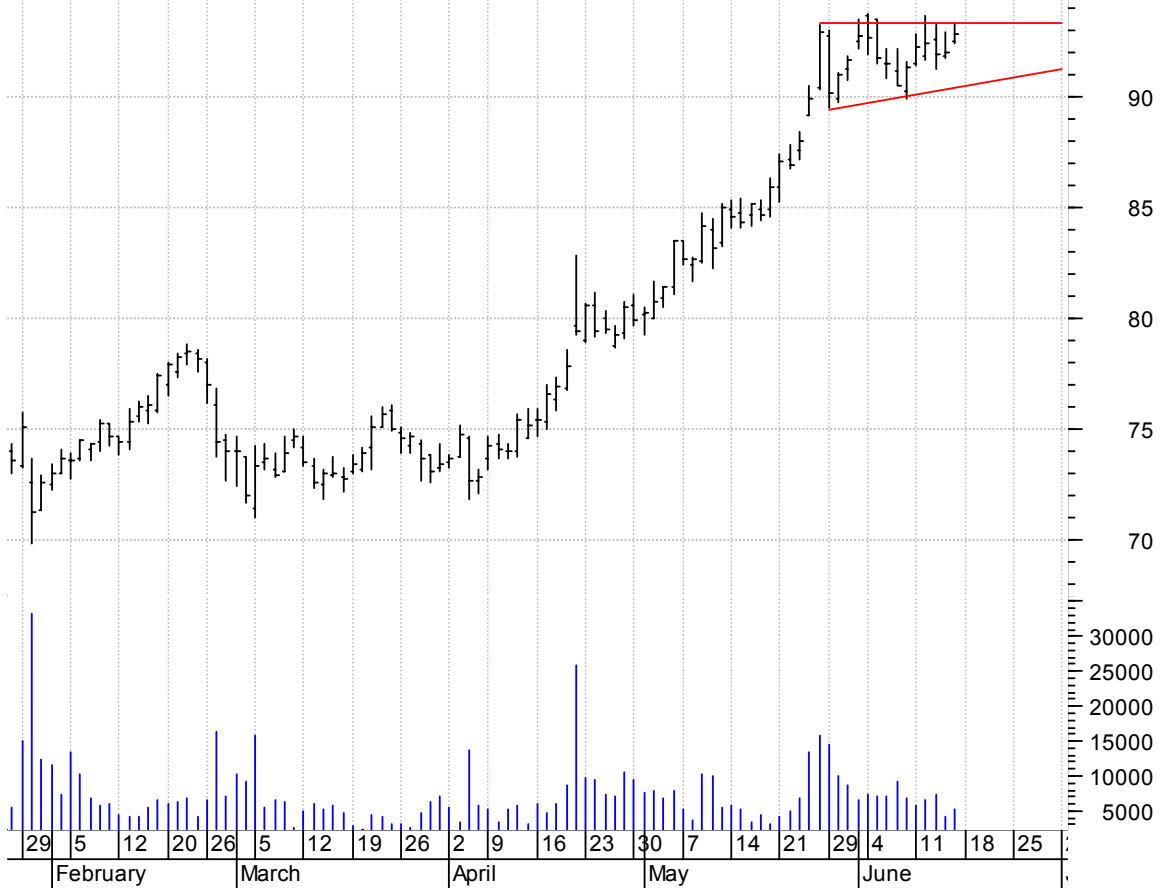
LAVA sloppy asc. tri. / buy on upside brkout on increased volume

MAGMA DESIGN AUT (14.9900, 15.0300, 14.7100, 14.8600 +0.0600)



MAN asc. tri. preceded by 'pole-like' move / buy on upside brkout on increased volume

Manpower Inc:NYS (92.5000, 93.3600, 92.4400, 92.8400 +0.8400)



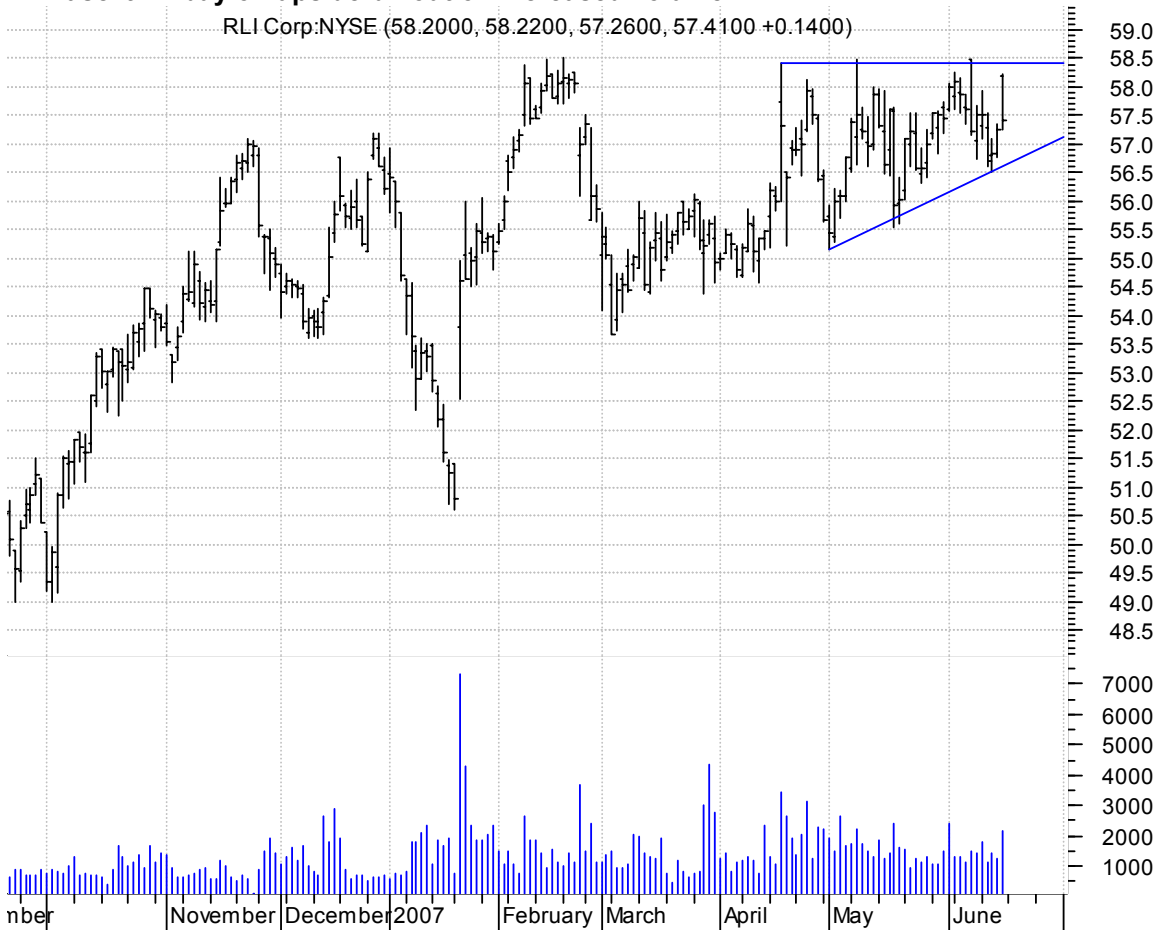
MTRX sloppy asc. tri. / buy on upside brkout on increased volume

Matrix Service C (26.1400, 26.8400, 26.1300, 26.5000 +0.9100)



RLI asc. tri. / buy on upside brkout on increased volume

RLI Corp:NYSE (58.2000, 58.2200, 57.2600, 57.4100 +0.1400)



SPH asc. tri. / buy on upside brkout on increased volume

Suburban Propane (48.5200, 48.7000, 48.2500, 48.3300 -0.2200)



VDSI symm. tri. / buy on upside brkout on increased volume



chartpatterns.com
Chart Pattern Analysis for Timing the Markets

KMatras@aol.com