

AMSF rectangle / buy on upside continuation thru dotted red line on increased volume



ARGN symm. tri. / buy on upside breakout on increased volume



AXTI symm. tri. / buy on upside brkout on increased volume

AXT Inc:OTC (4.6800, 4.7700, 4.6300, 4.7700 +0.0500)



CMC symm. tri. / buy on upside brkout on increased volume

Commercial Metal (27.5400, 27.8500, 26.3000, 26.5200 -1.1600)



HSCG sloppy asc. tri. / buy on upside brkout on increased volume

Health Care Serv (28.1900, 28.4100, 27.7200, 28.0100 -0.3700)



IGTE symm. tri. / buy on upside brkout on larger than normal volume

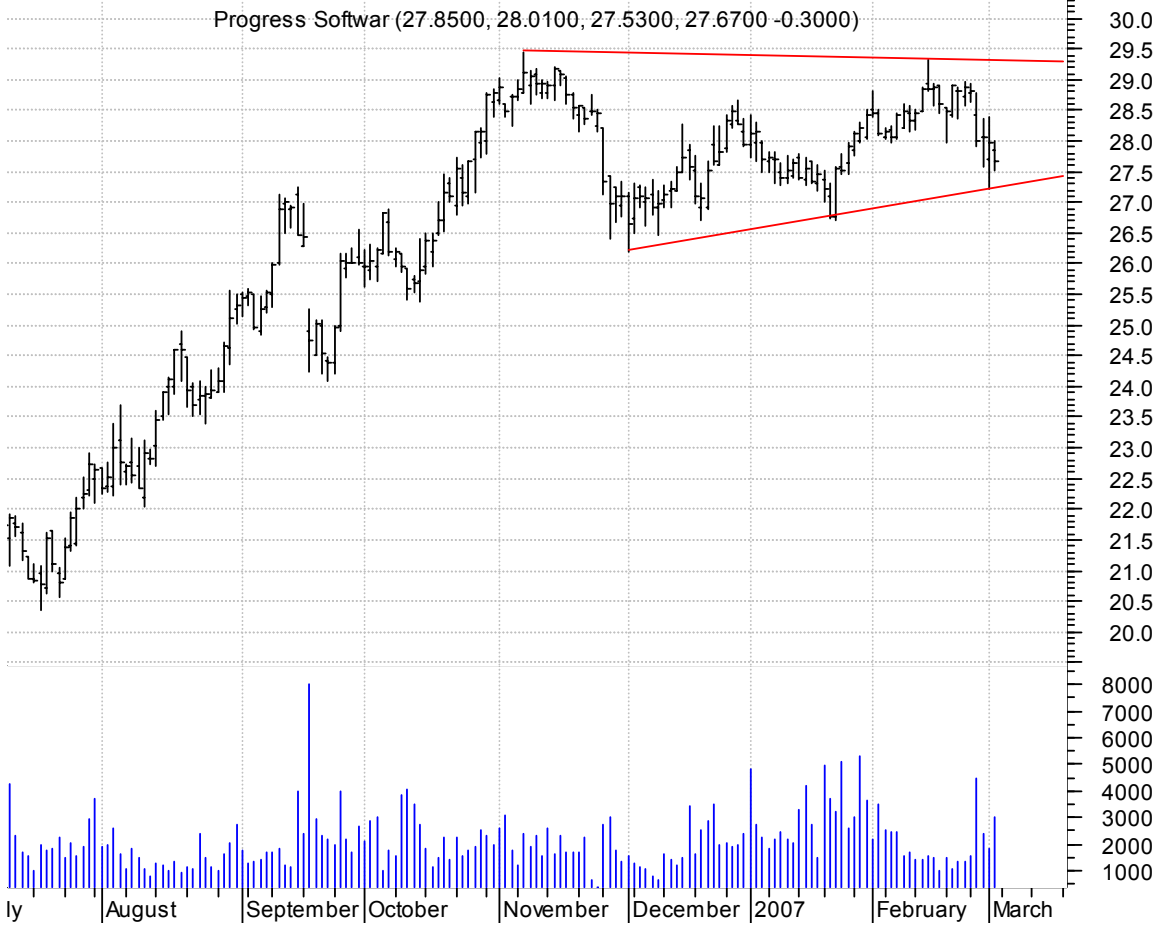
IGate Corp:OTC (7.1200, 7.1200, 6.7200, 6.7700 -0.4000)



NLC falling wedge preceded by 'pole-like' move / buy on upside brkout on increased volume

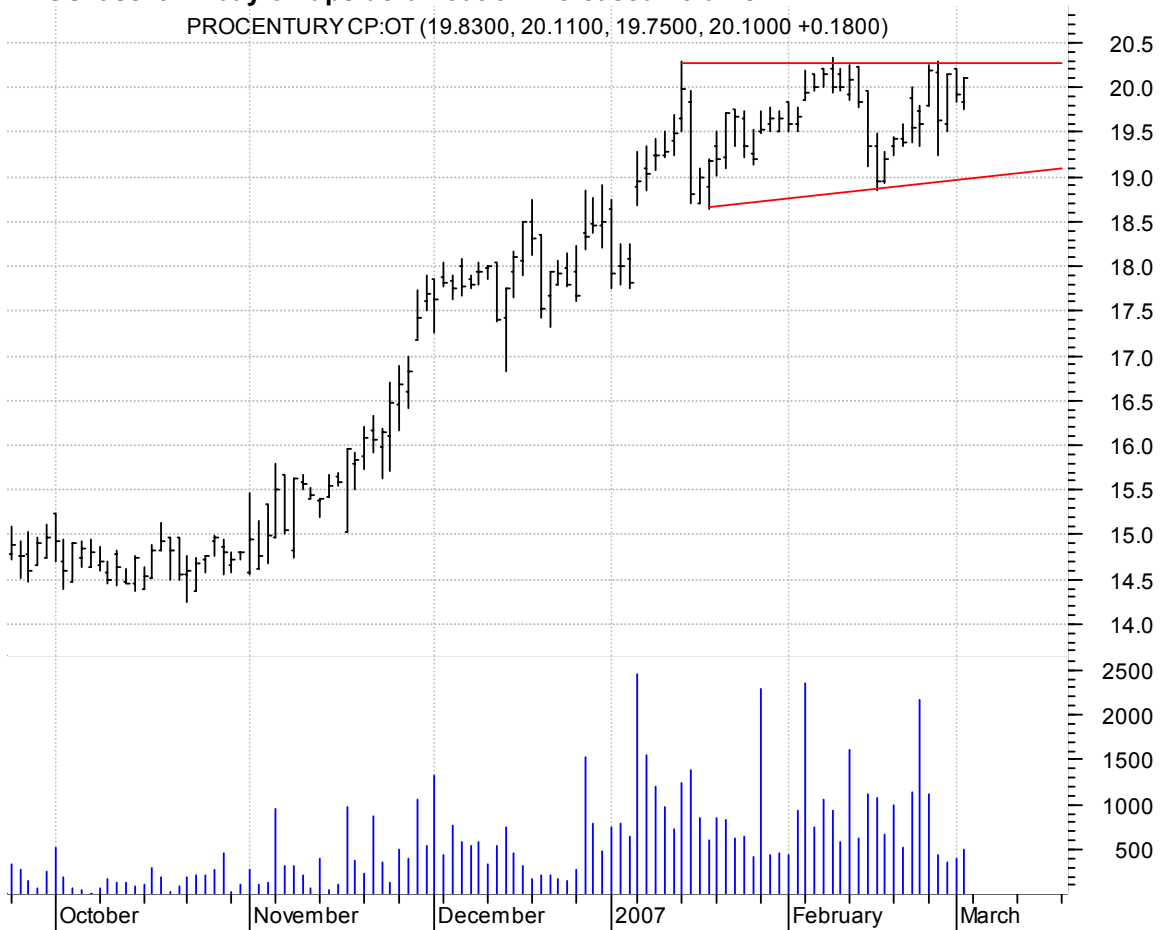


PRGS symm. tri. / buy on upside brkout on larger than normal volume



PROS asc. tri. / buy on upside brkout on increased volume

PROCENTURY CP:OT (19.8300, 20.1100, 19.7500, 20.1000 +0.1800)



PWR symm. tri. / buy on upside brkout on increased volume

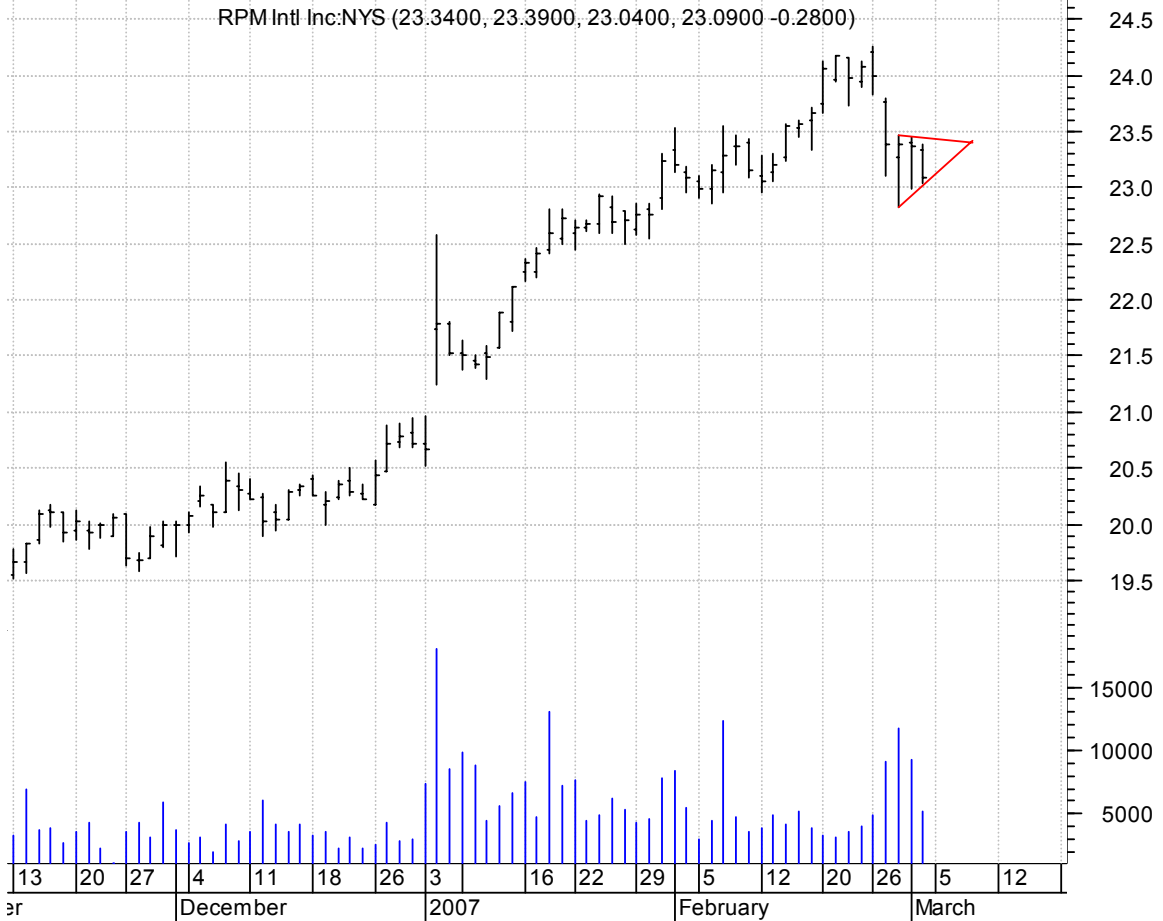
Quanta Services (23.3100, 23.4300, 22.3600, 22.3800 -1.0400)



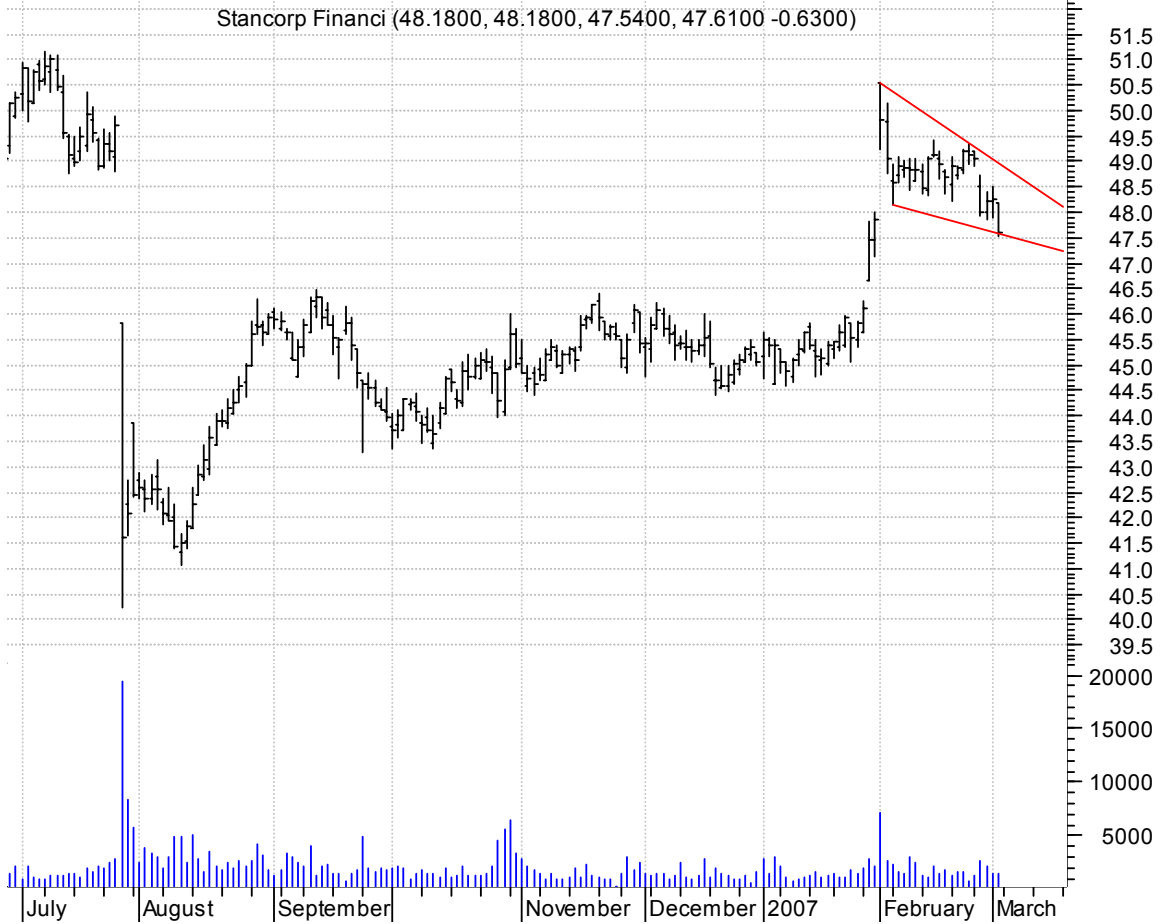
RJET sloppy symm. tri. (better seen on an intraday chart) / buy on upside brkout on increased volume



RPM bear pennant (better seen on an intraday chart) / sell on downside brkout on increased volume



SFG falling wedge preceded by 'pole-like' move / buy on upside brkout on increased volume



TSYS symm. tri. / buy on upside brkout on increased volume



chartpatterns.com
Chart Pattern Analysis for Timing the Markets

KMatras@aol.com