

**AAI symm. tri. / buy on upside breakout on increased volume**

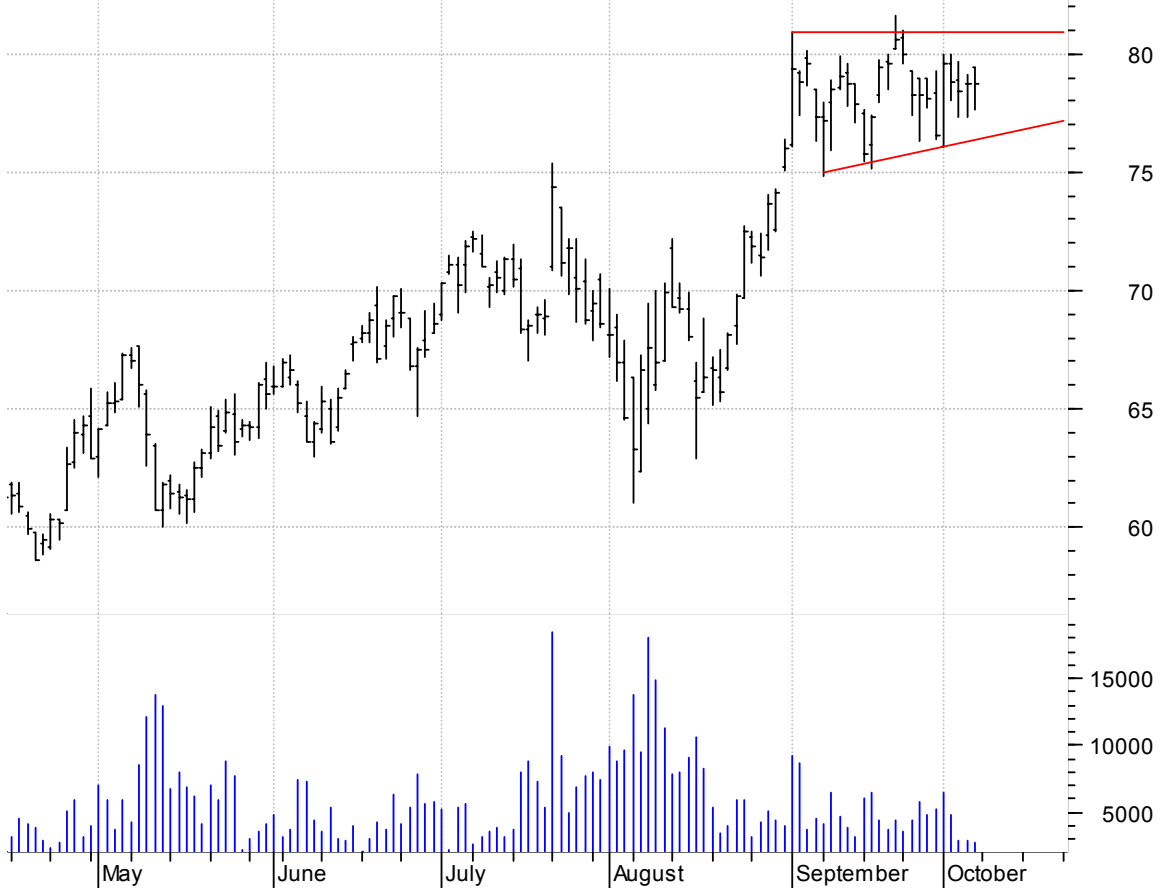


**ATNI symm. tri. / buy on upside breakout on increased volume**



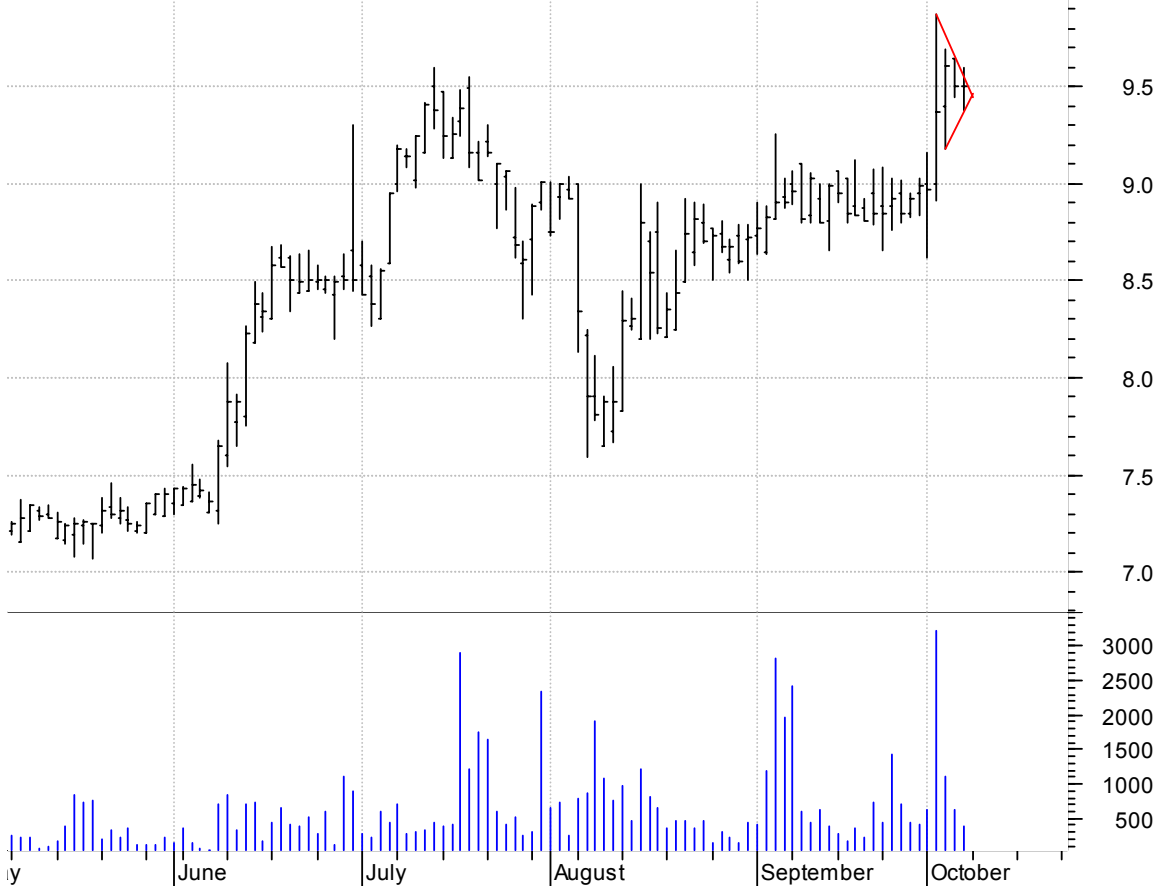
**ATW sloppy asc. tri. / buy on upside breakout on increased volume**

Atwood Oceanics (79.4500, 79.4500, 77.6400, 78.7100 +0.0100)



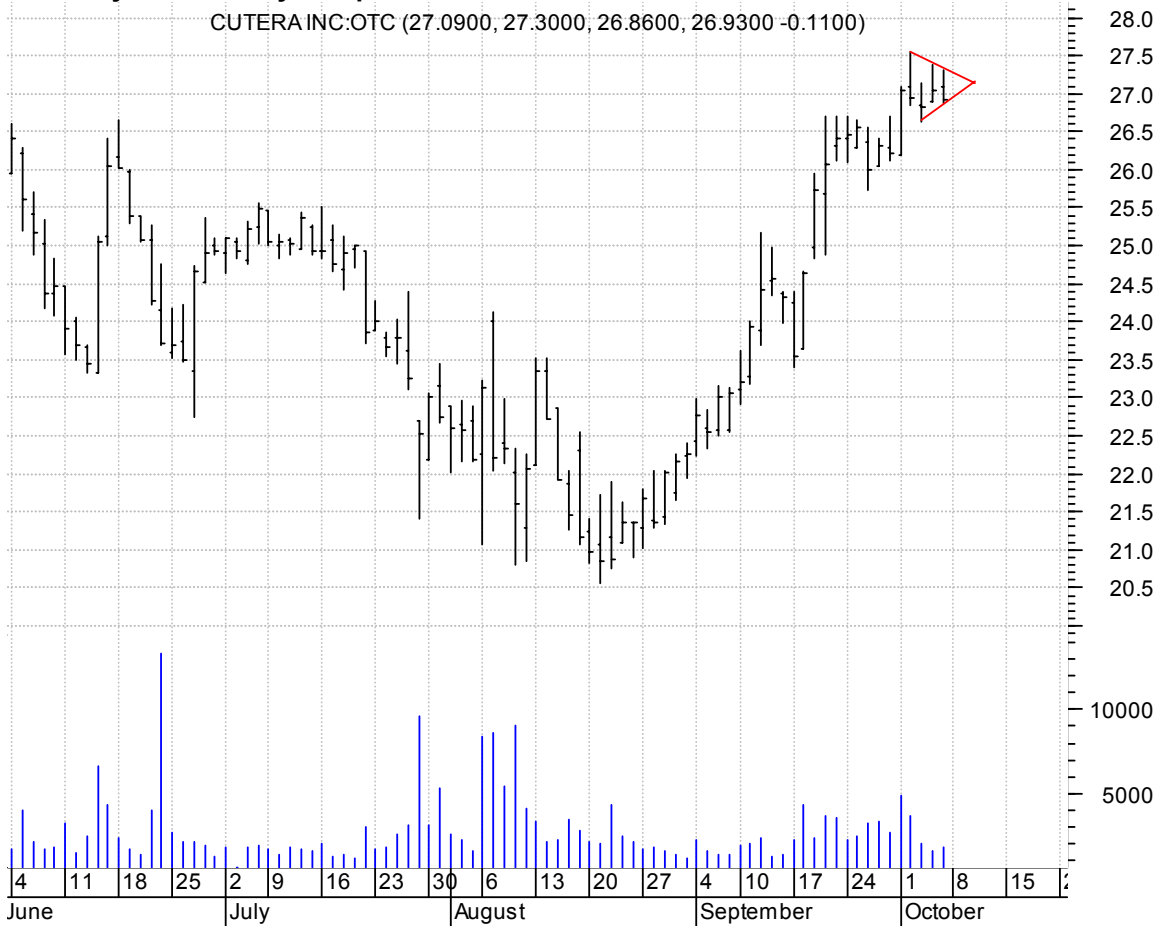
**CEVA symm. tri. preceded by 'pole-like' move / buy on upside breakout on increased volume**

Ceva Inc:OTC (9.5000, 9.6000, 9.3800, 9.5000 +0.0000)



**CUTR symm. tri. / buy on upside brkout on increased volume**

CUTERA INC:OTC (27.0900, 27.3000, 26.8600, 26.9300 -0.1100)



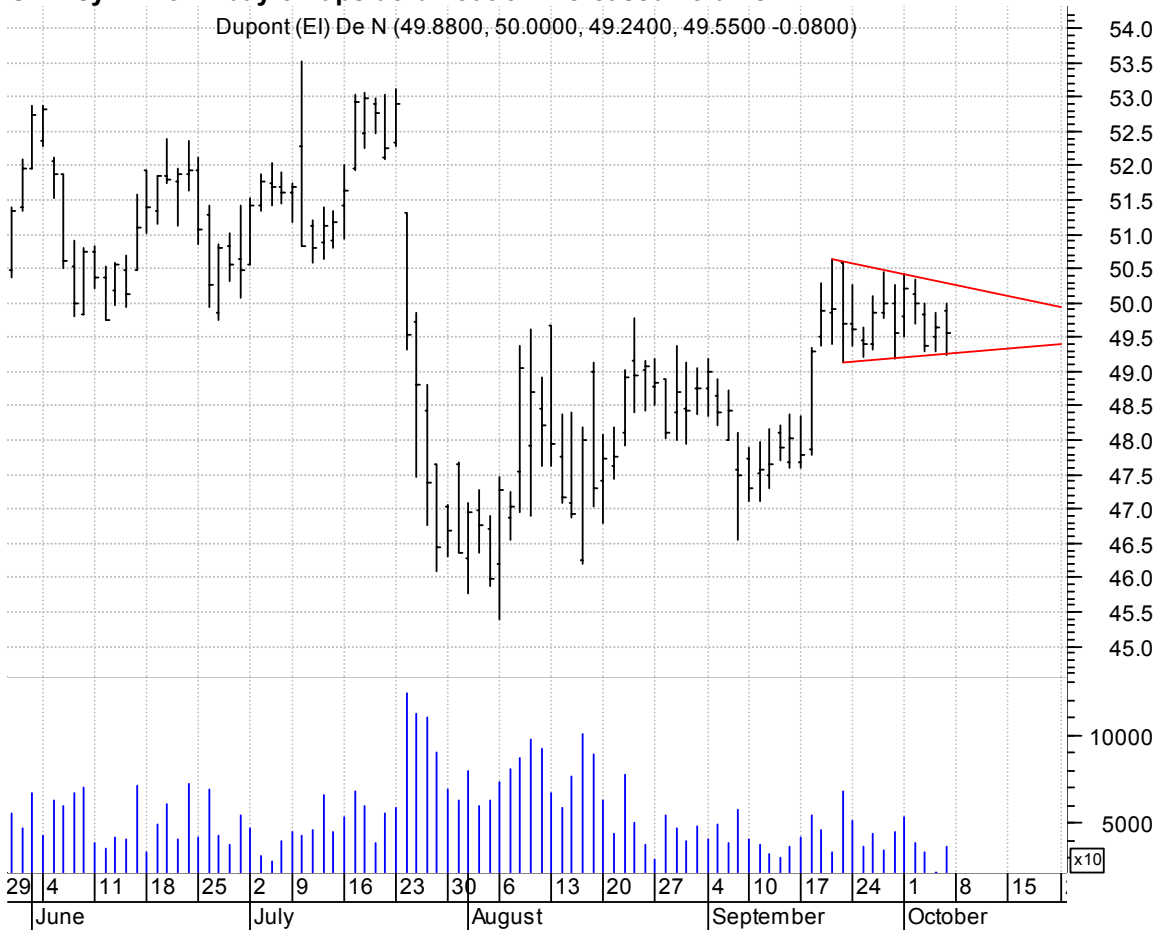
**FMCN bull pennant / buy on upside brkout on increased volume**

Focus Media Hldg (57.8000, 59.0700, 57.5000, 57.9000 +0.8900)



**GLT symm. tri. / buy on upside brkout on increased volume**

Dupont (El) De N (49.8800, 50.0000, 49.2400, 49.5500 -0.0800)



**HAYN symm. tri. / buy on upside brkout on increased volume**

Haynes Internati (87.2700, 87.8900, 85.3800, 86.7500 +0.7500)



**HDNG symm. tri. / buy on upside breakout on increased volume**

Hardinge Inc.:OTC (34.4700, 36.2200, 33.8500, 35.5900 +1.5500)



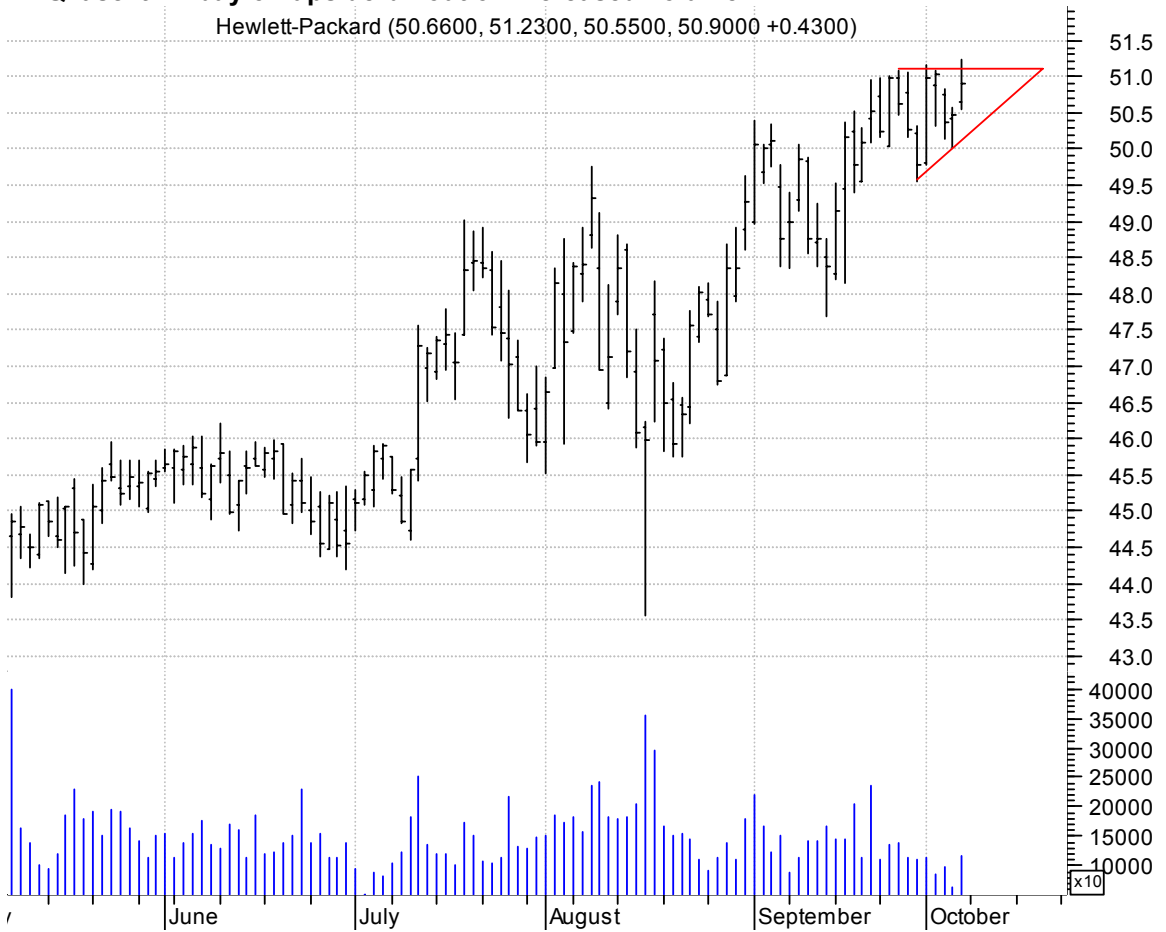
**HLS symm. tri. / buy on upside breakout on increased volume**

Healthsouth Corp (17.5000, 17.6900, 17.2500, 17.6700 +0.3500)



### HPQ asc. tri. / buy on upside brkout on increased volume

Hewlett-Packard (50.6600, 51.2300, 50.5500, 50.9000 +0.4300)



### IBM sloppy asc. tri. / buy on upside brkout on increased volume

Intl Business Ma (116.170, 116.710, 115.470, 116.300 +0.6100)



**INTC sloppy asc. tri. / buy on upside breakout on increased volume**

Intel Corp:OTC (25.8000, 25.9400, 25.4900, 25.5400 -0.0600)



**KNOL falling wedge / buy on upside breakout on increased volume**

KNOLOGY INC:OTC (16.7800, 17.3400, 16.6100, 17.0000 +0.4300)



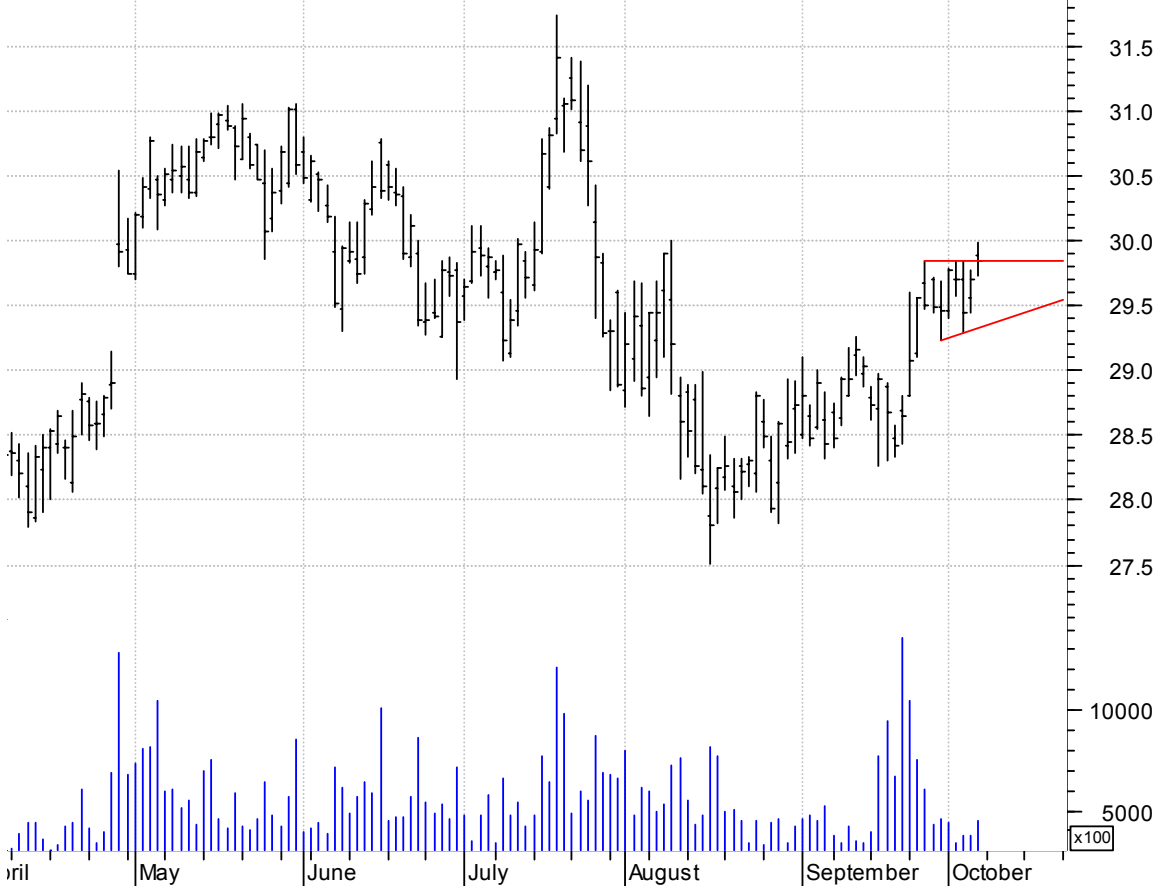
**LH symm. tri. / buy on upside brkout on increased volume**

Laboratory Corp (77.3500, 77.7600, 76.8500, 77.5700 +0.6200)



**MSFT asc. tri. / buy on upside brkout on increased volume**

Microsoft Corp:O (29.8900, 29.9900, 29.7300, 29.8400 +0.1300)





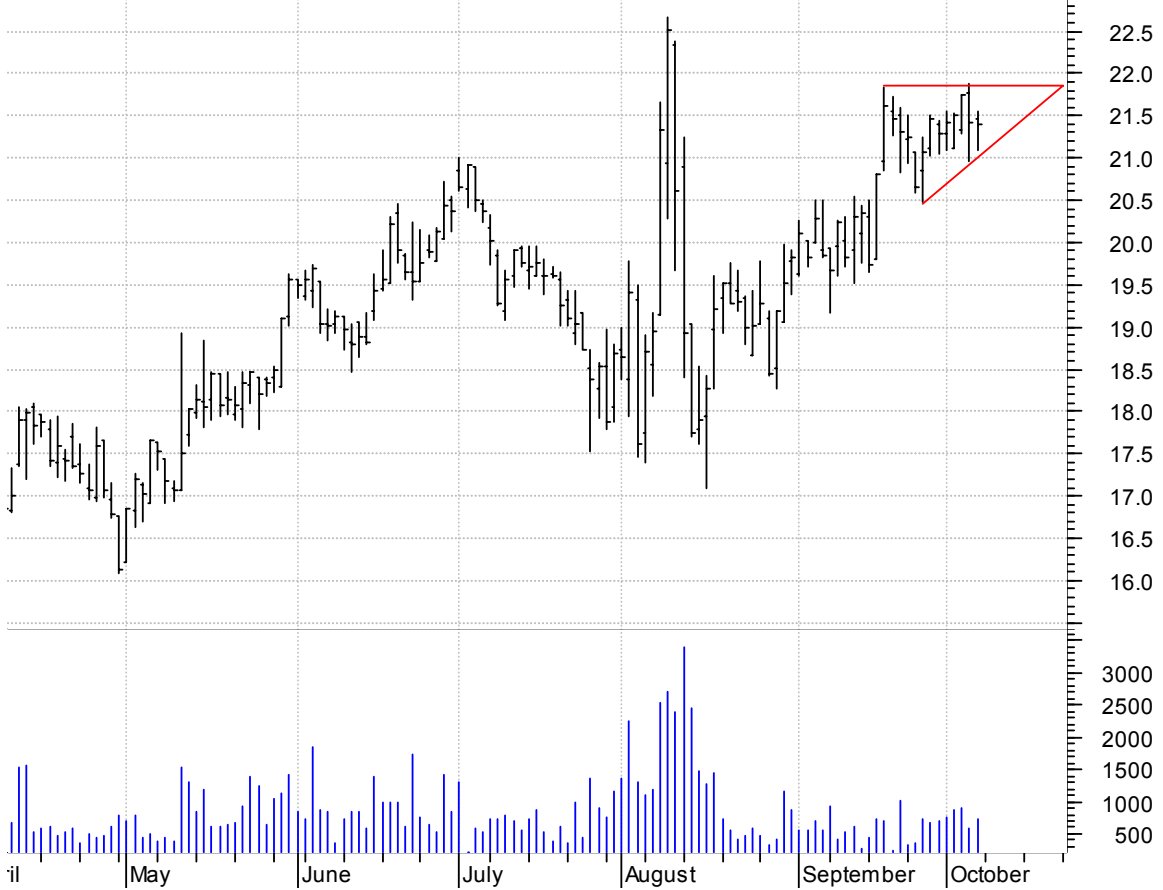
**MW symm. tri. / buy on upside breakout on increased volume**

Mens Wearhouse I (51.4500, 51.4800, 49.8200, 50.0000 -0.7500)



**NOBL asc. tri. / buy on upside breakout on increased volume**

Noble Intl Ltd:O (21.4700, 21.5400, 21.0900, 21.4000 -0.0200)



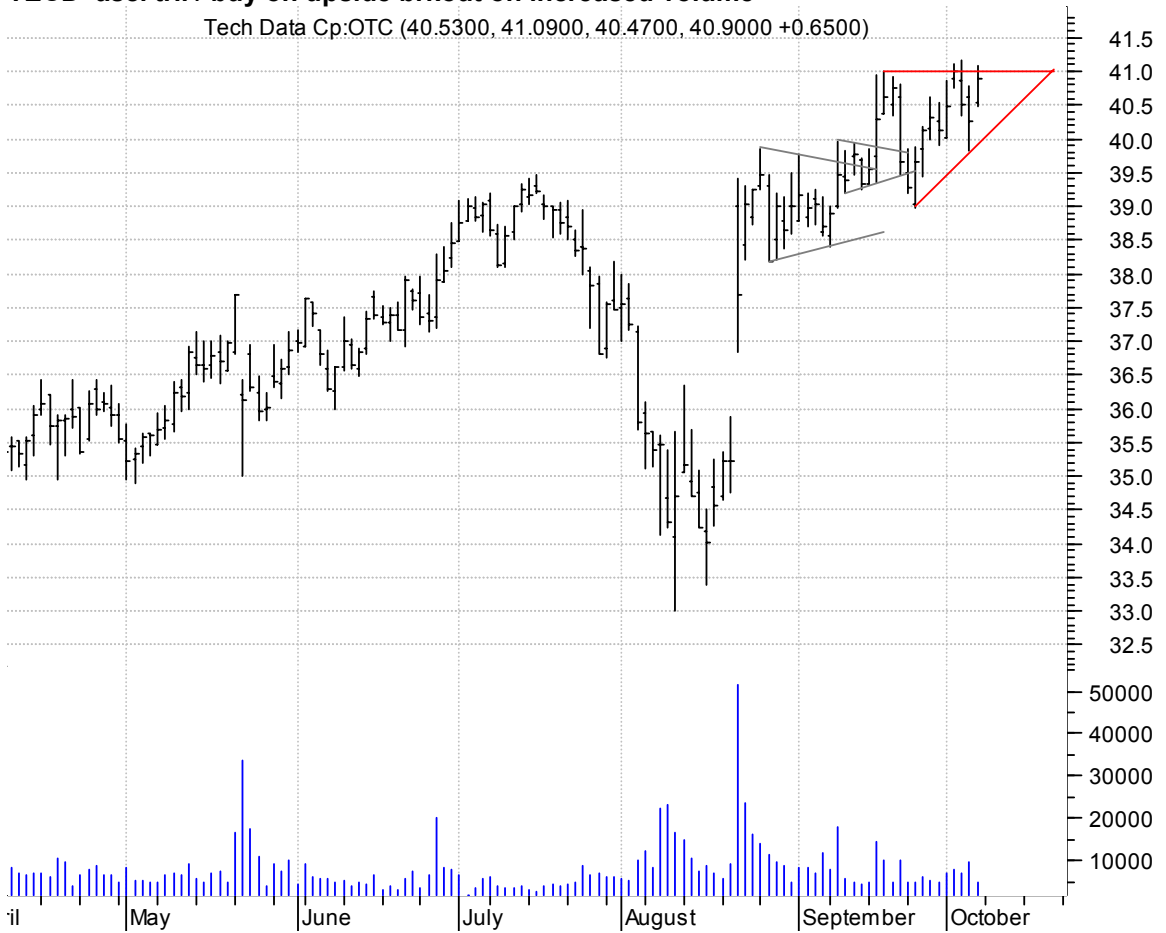
**RBN bull flag / buy on upside brkout on increased volume**

Robbins & Myers (58.3500, 59.7700, 58.0000, 59.4500 +1.6200)



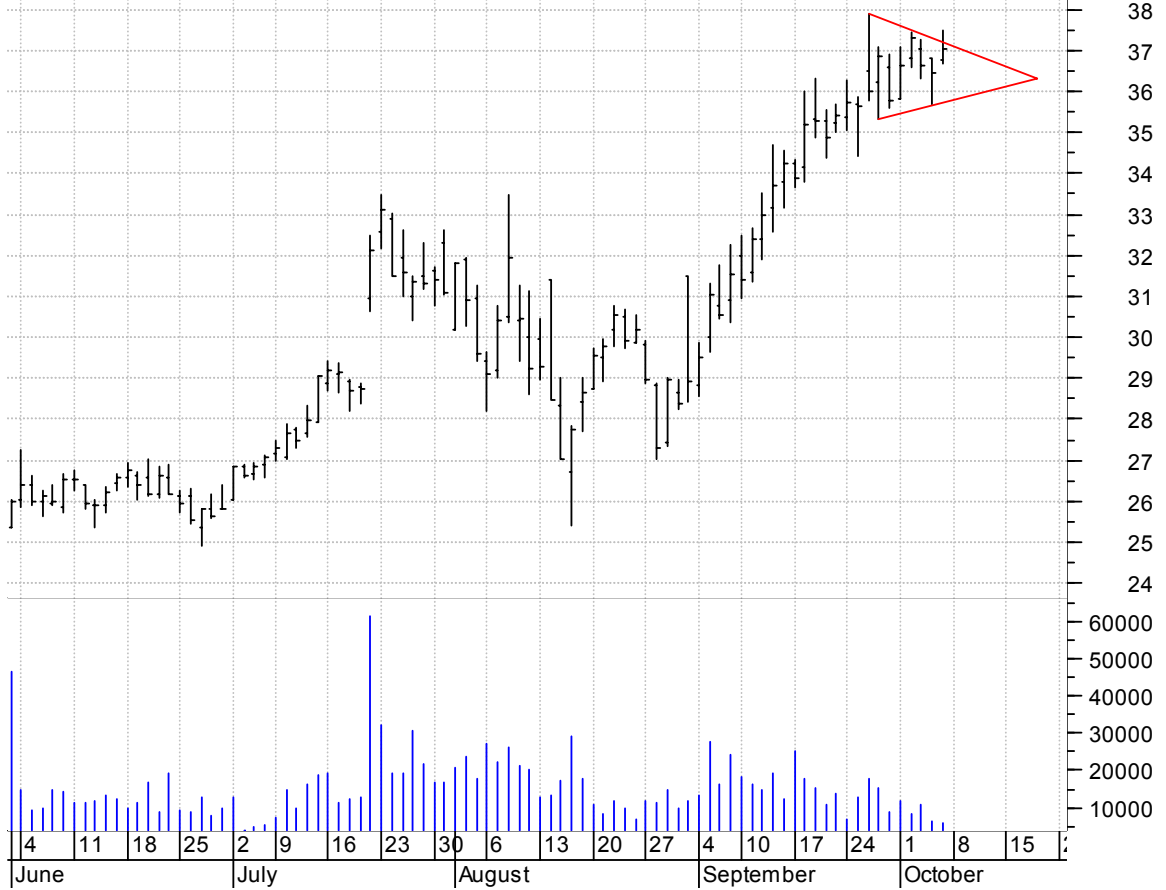
**TECD asc. tri. / buy on upside brkout on increased volume**

Tech Data Cp:OTC (40.5300, 41.0900, 40.4700, 40.9000 +0.6500)



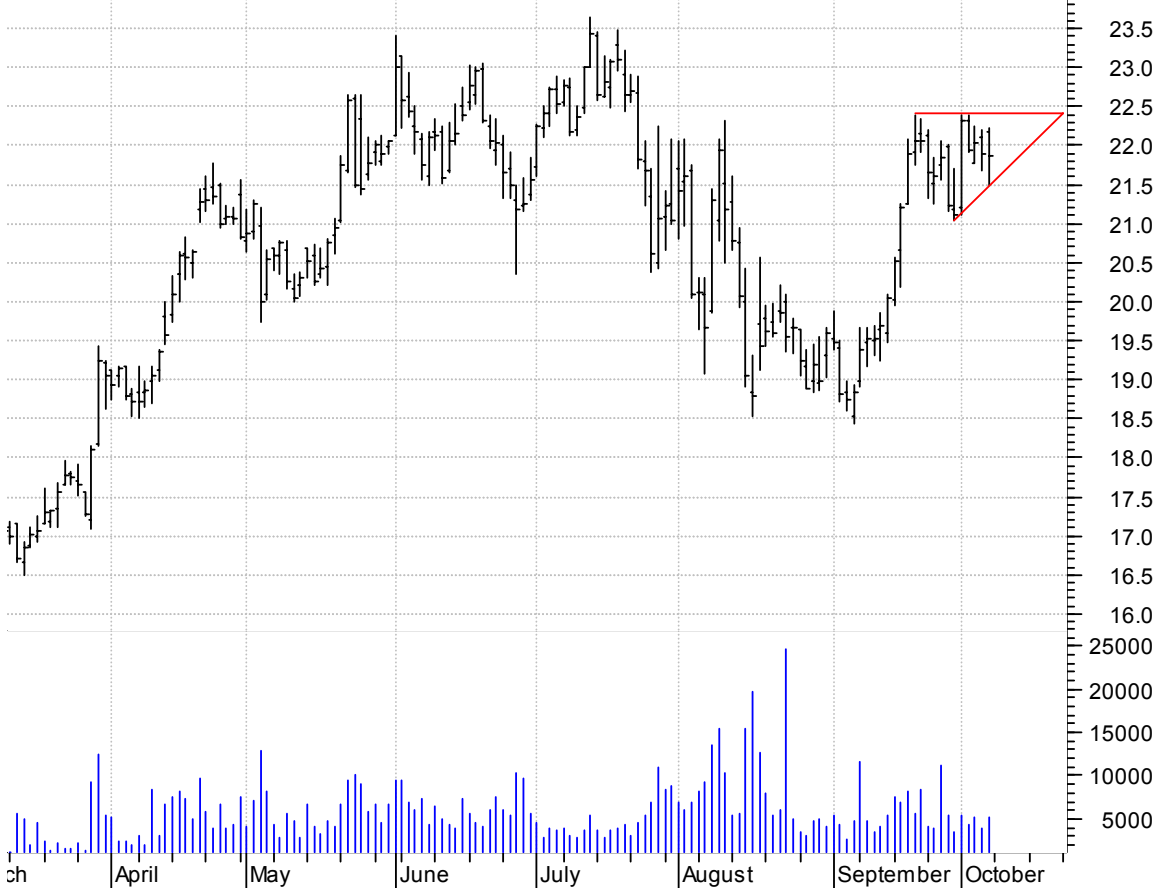
**TPX symm. tri. / buy on upside brkout on increased volume**

TEMPUR-PEDIC INT (36.7700, 37.5000, 36.6800, 37.0500 +0.5900)



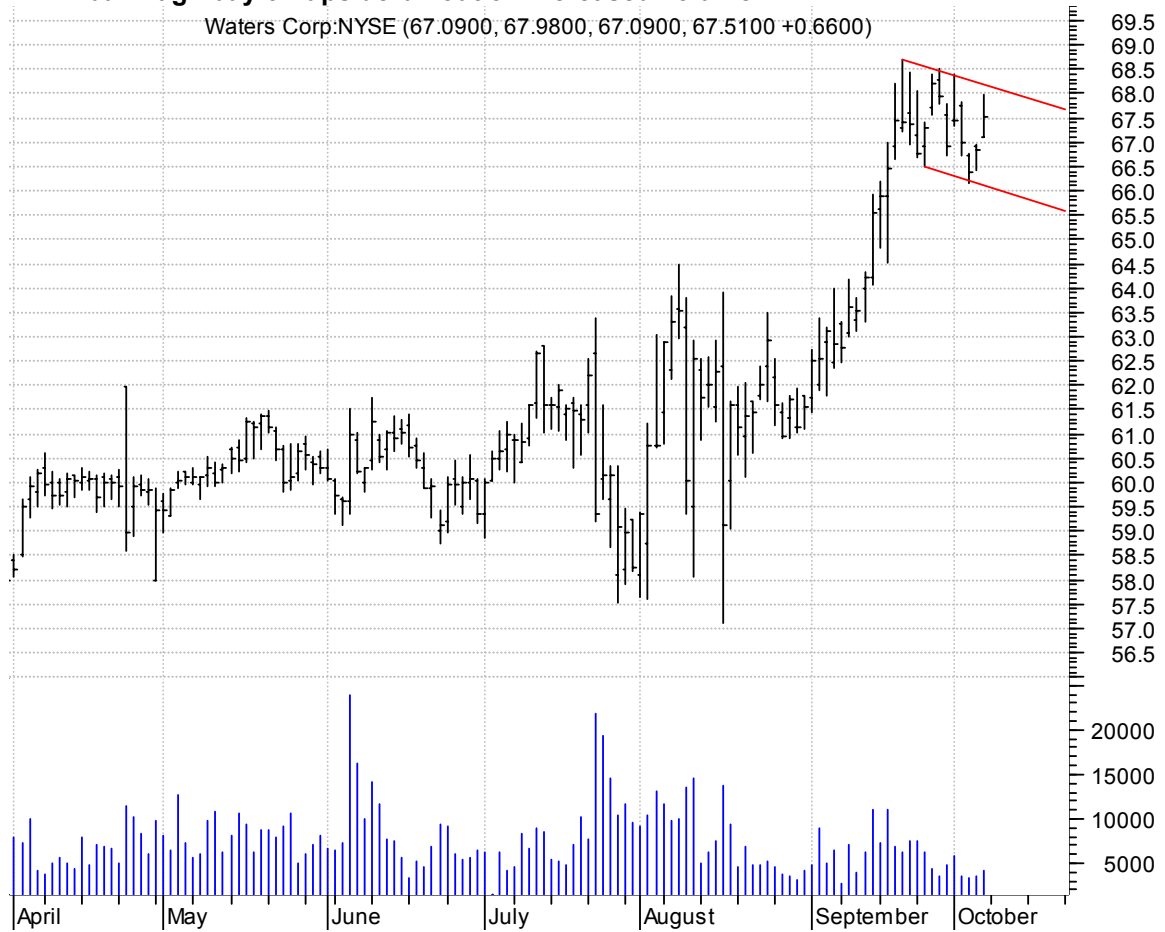
**TTEK asc. tri. / buy on upside brkout on increased volume**

Tetra Tech Inc:O (22.1800, 22.2200, 21.5000, 21.8600 -0.0400)



**WAT bull flag / buy on upside breakout on increased volume**

Waters Corp:NYSE (67.0900, 67.9800, 67.0900, 67.5100 +0.6600)



**WMGI sloppy symm. tri. (discounting spike day) / buy on upside breakout on increased volume**

WRIGHT MEDICAL G (27.6200, 27.9200, 27.2000, 27.7500 +0.3200)



**chartpatterns.com**  
Chart Pattern Analysis for Timing the Markets

[KMatras@aol.com](mailto:KMatras@aol.com)