

**ATNI falling wedge / buy on upside brkout on increased volume**

Atlantic Tele-Ne (35.6500, 36.8300, 35.6500, 36.4400 +0.9900)



**CASY symm. tri. / buy on upside brkout on increased volume**

Casey's General (28.8100, 29.0900, 28.5400, 28.9000 +0.0800)



**CEVA symm. tri. preceded by 'pole-like' move / buy on upside brkout on increased volume**

Ceva Inc:OTC (9.3200, 9.6000, 9.3200, 9.4600 -0.0400)



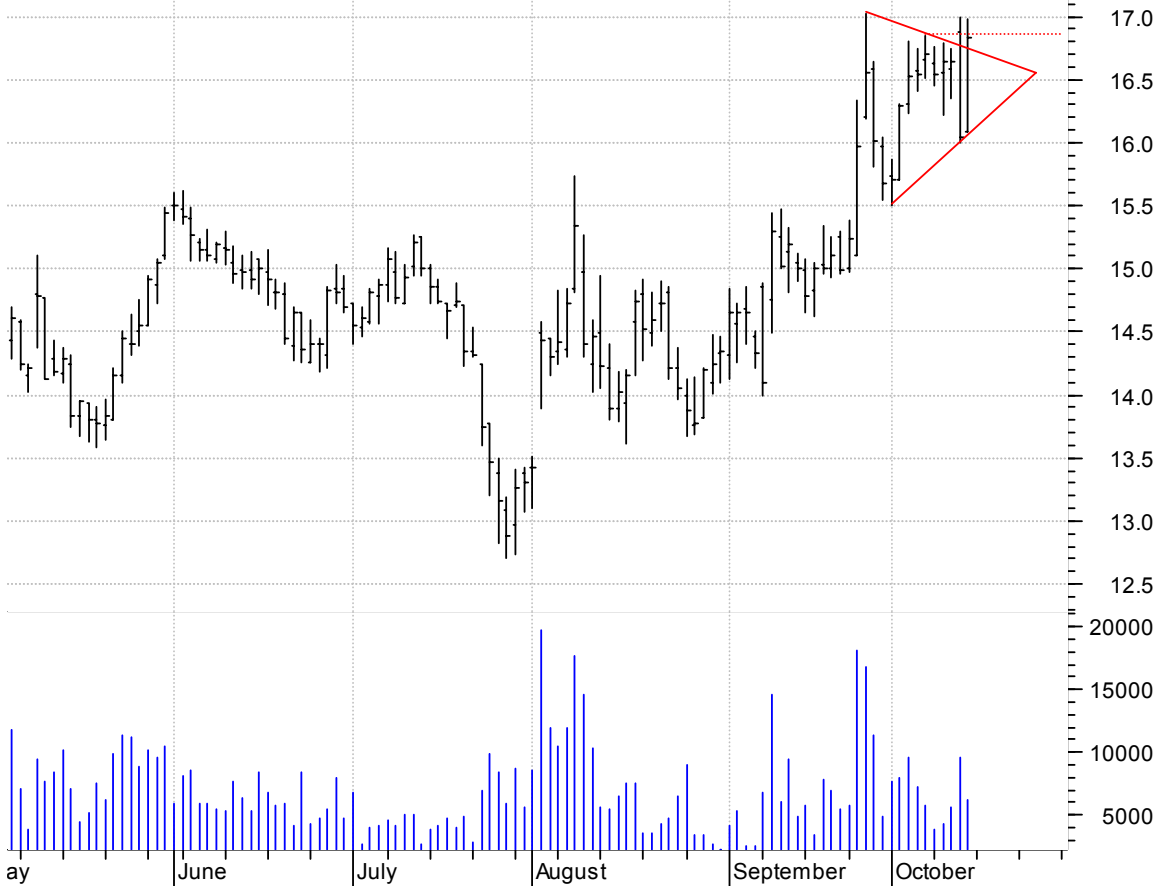
**CF symm. tri. / buy on upside brkout on increased volume**

CF INDUSTRIES HO (72.1000, 77.2800, 71.6700, 75.8000 +4.7300)



**COGT symm. tri. / buy on upside brkout thru dotted red line on increased volume**

COGENT INC:OTC (16.0900, 16.9800, 16.0900, 16.8300 +0.7900)



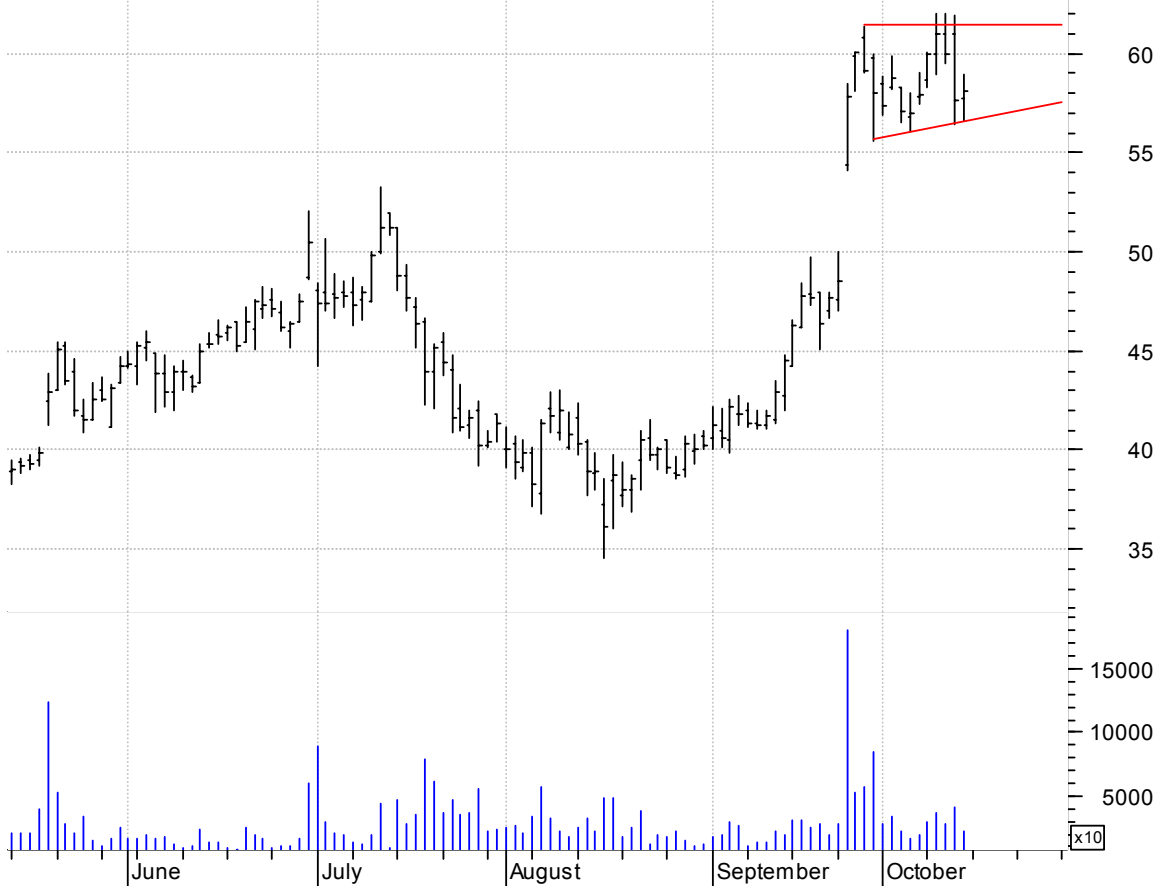
**ECLP sloppy symm. tri. / buy on upside brkout on increased volume**

Eclipsys Corp:OT (24.0000, 24.7000, 23.8800, 24.4500 +0.4400)



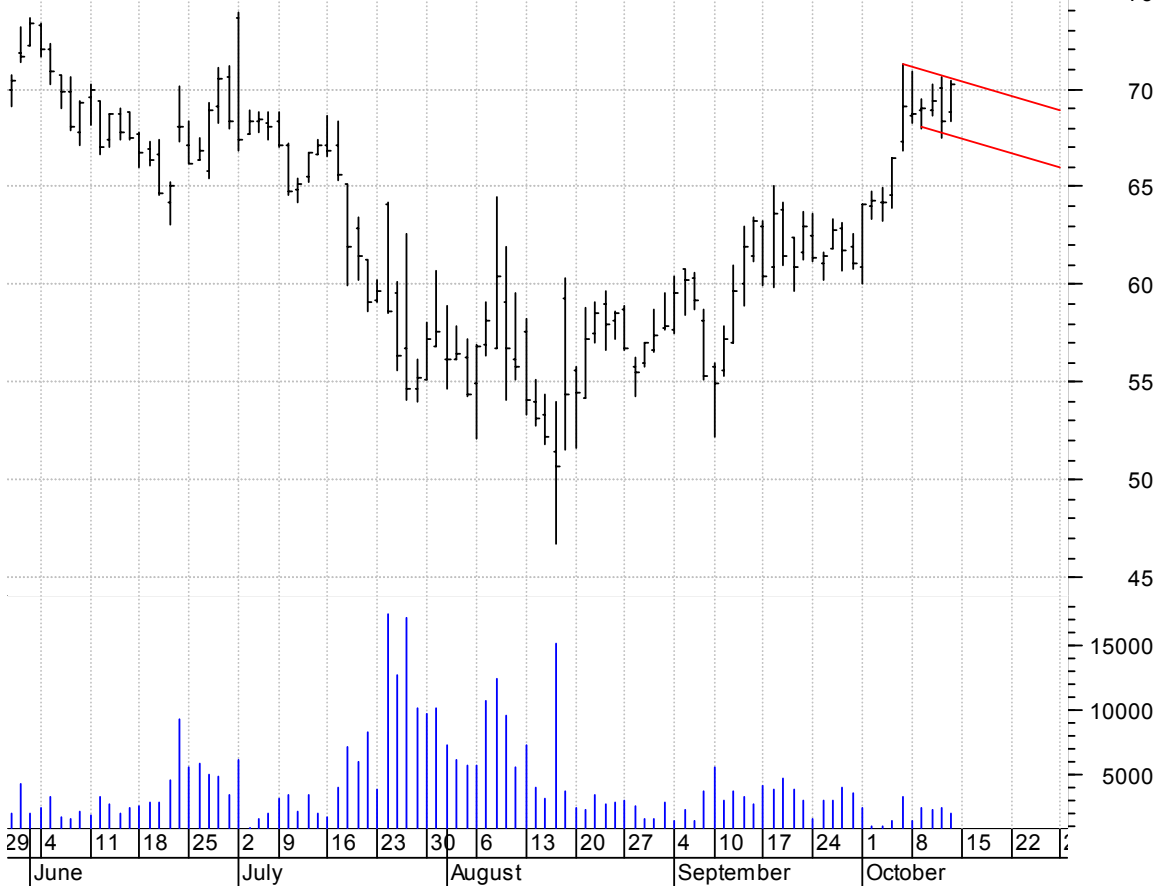
**FMCN sloppy asc. tri. preceded by 'pole-like' move / buy on upside brkout on increased volume**

Focus Media Hldg (57.7800, 58.9000, 56.6100, 58.1500 +0.5100)



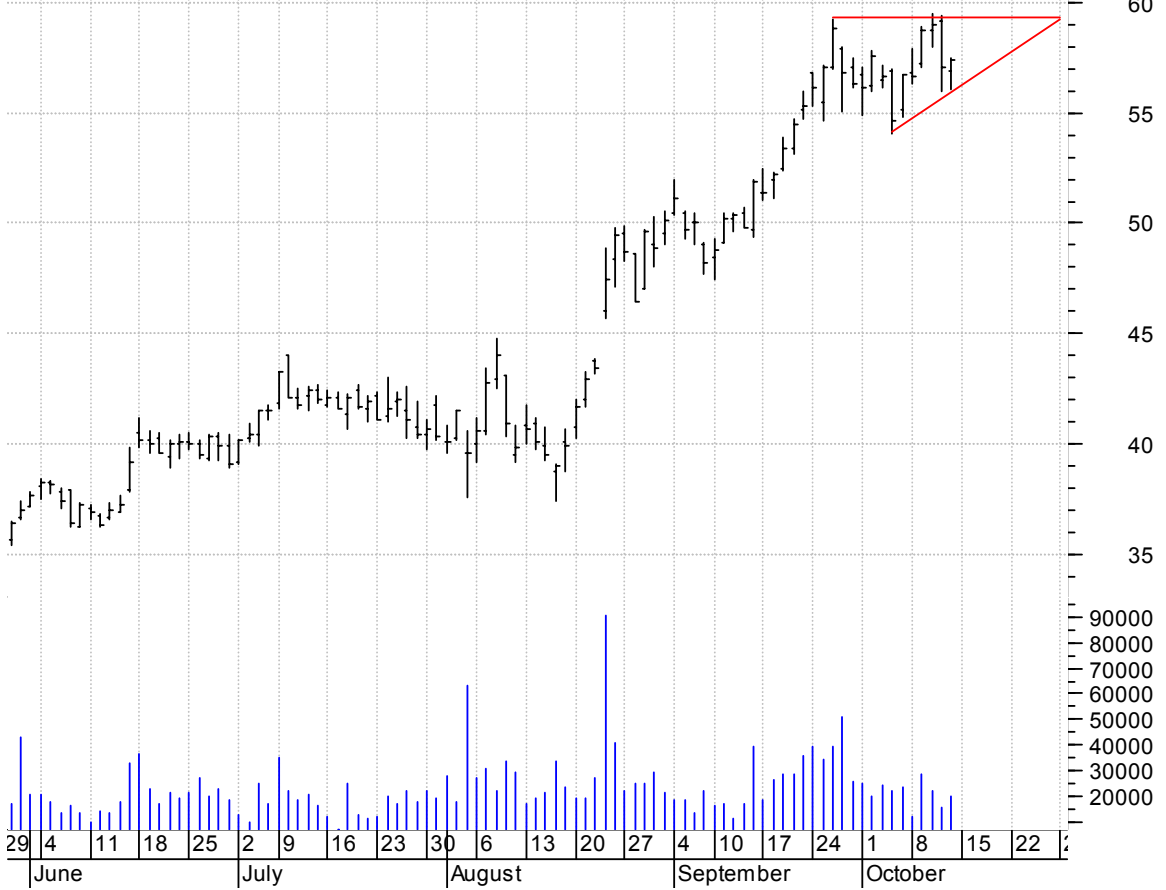
**GHL bull flag / buy on upside brkout on increased volume**

GREENHILL & CO I (68.8500, 70.4100, 68.3800, 70.2300 +1.8500)



**GME asc. tri. / buy on upside breakout on increased volume**

GAMESTOP CP:NYSE (56.9300, 57.4900, 56.0300, 57.4000 +0.3500)



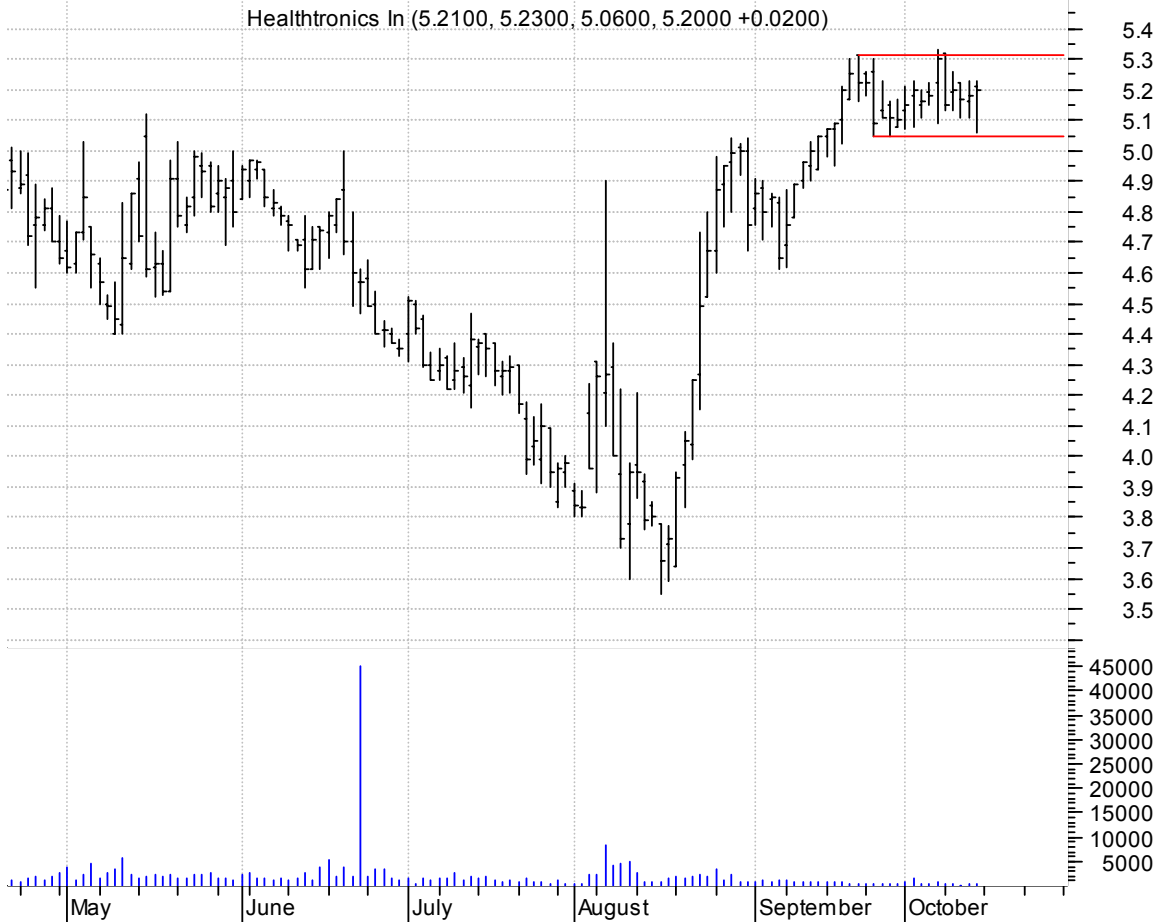
**HAYN symm. tri. / buy on upside breakout on increased volume**

Haynes Internati (87.0000, 87.0000, 83.7200, 85.0800 -2.9400)



**HTRN rectangle preceded by 'pole-like' move / buy on upside breakout on increased volume**

Healthtronics In (5.2100, 5.2300, 5.0600, 5.2000 +0.0200)



**IBM asc. tri. / buy on upside breakout on increased volume**

Intl Business Ma (118.500, 118.890, 117.280, 117.810 -0.2400)



**INTC asc. tri. / buy on upside breakout on increased volume**

Intel Corp.OTC (25.6000, 25.6800, 25.3300, 25.5500 +0.1200)



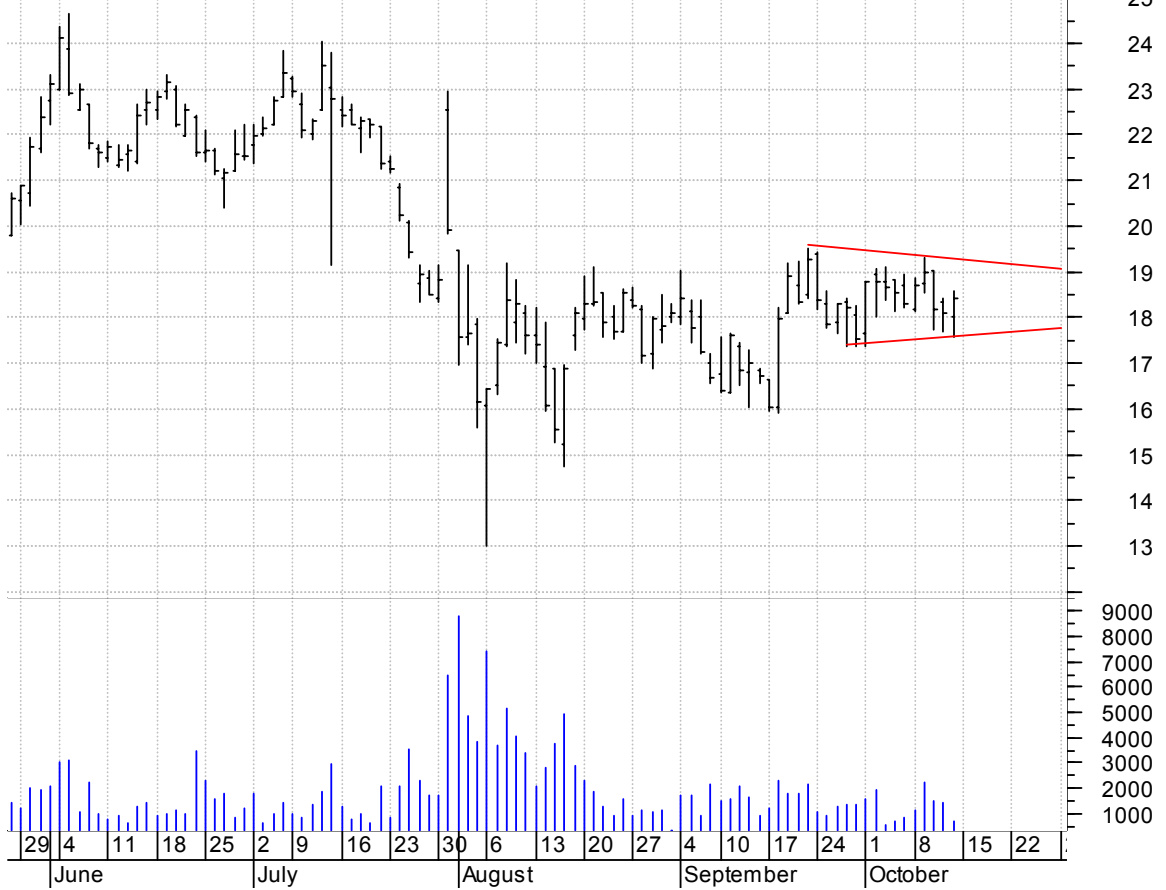
**IT symm. tri. / buy on upside breakout on increased volume**

Gartner Inc.NYSE (25.8800, 26.2900, 25.7700, 25.8600 +0.0500)



**LBY symm. tri. / buy on upside brkout on increased volume**

Libbey Inc:NYSE (18.0000, 18.5900, 17.5700, 18.4200 +0.3200)



**LH symm. tri. / buy on upside brkout on increased volume**

Laboratory Corp (77.2400, 78.0100, 77.2100, 77.9300 +0.6800)





**LTRE bull pennant / buy on upside brkout on increased volume**

Learning Tree In (19.5600, 20.5000, 19.5000, 20.1300 +0.5600)



**MERC symm. tri. / buy on upside brkout on increased volume**

Mercer Internati (9.7300, 9.9500, 9.6000, 9.9300 +0.1900)



**MRK falling wedge / buy on upside brkout on increased volume**

Merck & Co Inc:N (53.1900, 53.6800, 52.8000, 53.5100 +0.4700)



**MTZ asc. tri. / buy on upside brkout on increased volume**

Mastec Inc:NYSE (15.0200, 15.5400, 14.9500, 15.3600 +0.3300)



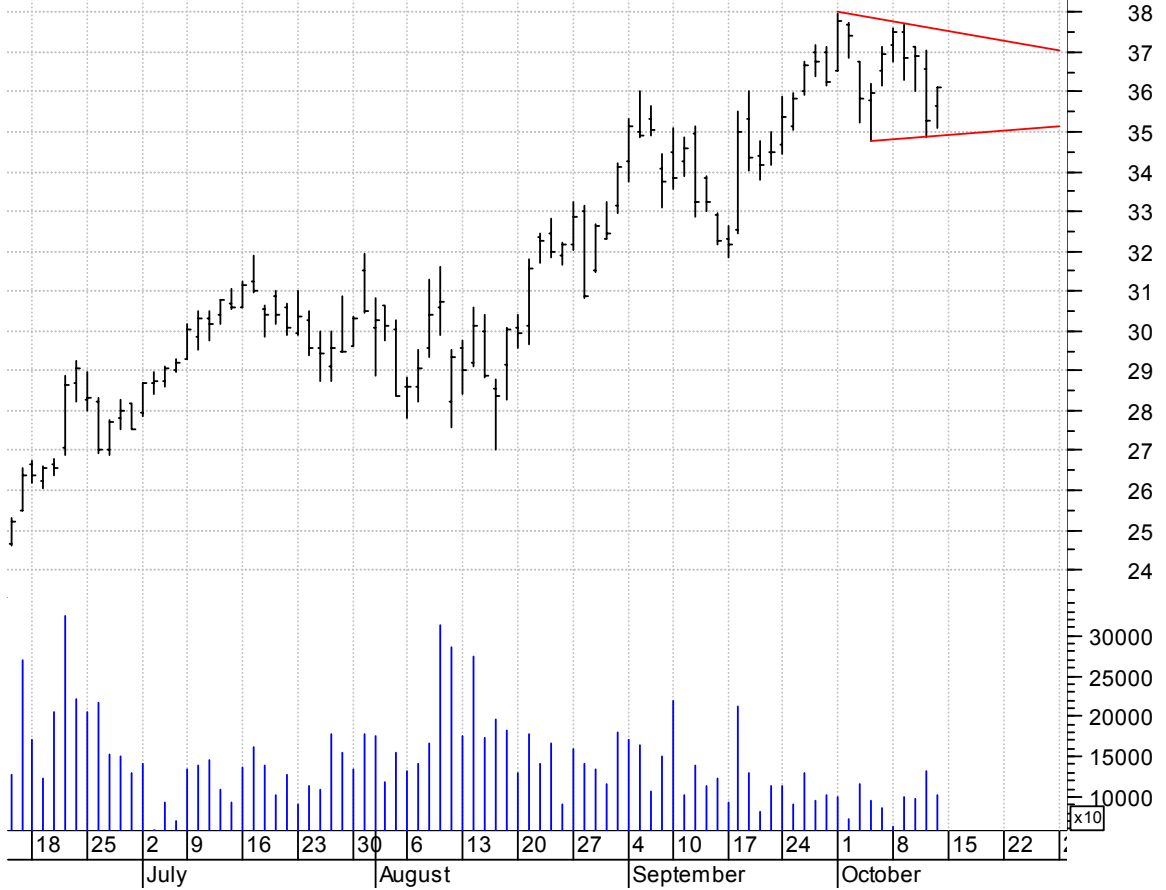
**NLY bullish flagging / buy on upside breakout on increased volume**

Annaly Capital M (15.1200, 15.9700, 15.1200, 15.8500 +0.5100)



**NVDA symm. tri. / buy on upside breakout on increased volume**

Nvidia Corp.OTC (35.6600, 36.1300, 35.1100, 36.1300 +0.8600)



**OME falling wedge preceded by 'pole-like' move / buy on upside brkout on increased volume**

Omega Protein Co (9.9500, 9.9500, 9.7800, 9.8200 -0.1800)



**ONXX asc. tri. preceded by 'pole-like' move / buy on upside brkout on increased volume**

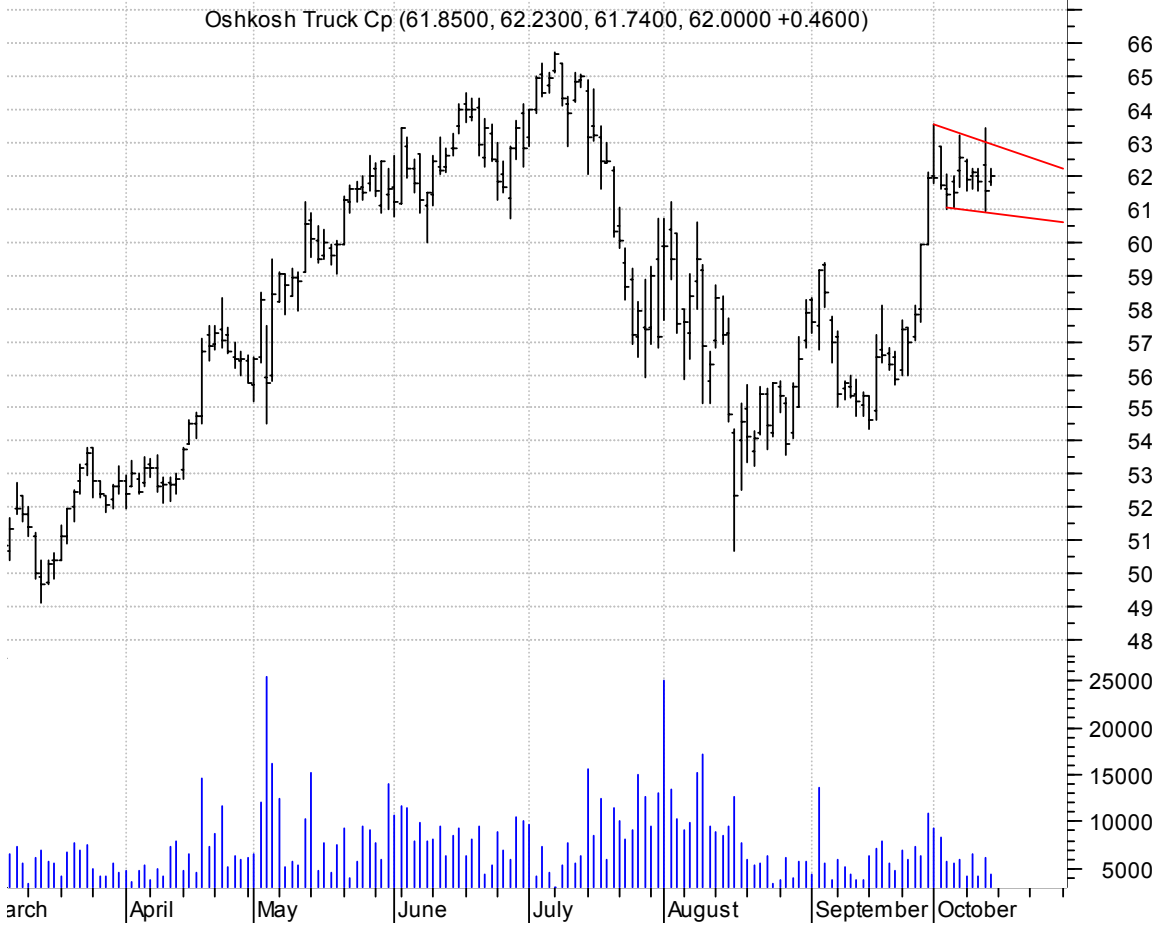
Onyx Pharmaceuti (42.2900, 43.1900, 41.8800, 42.2100 -0.1100)



**ORCC symm. tri. / buy on upside breakout on increased volume**

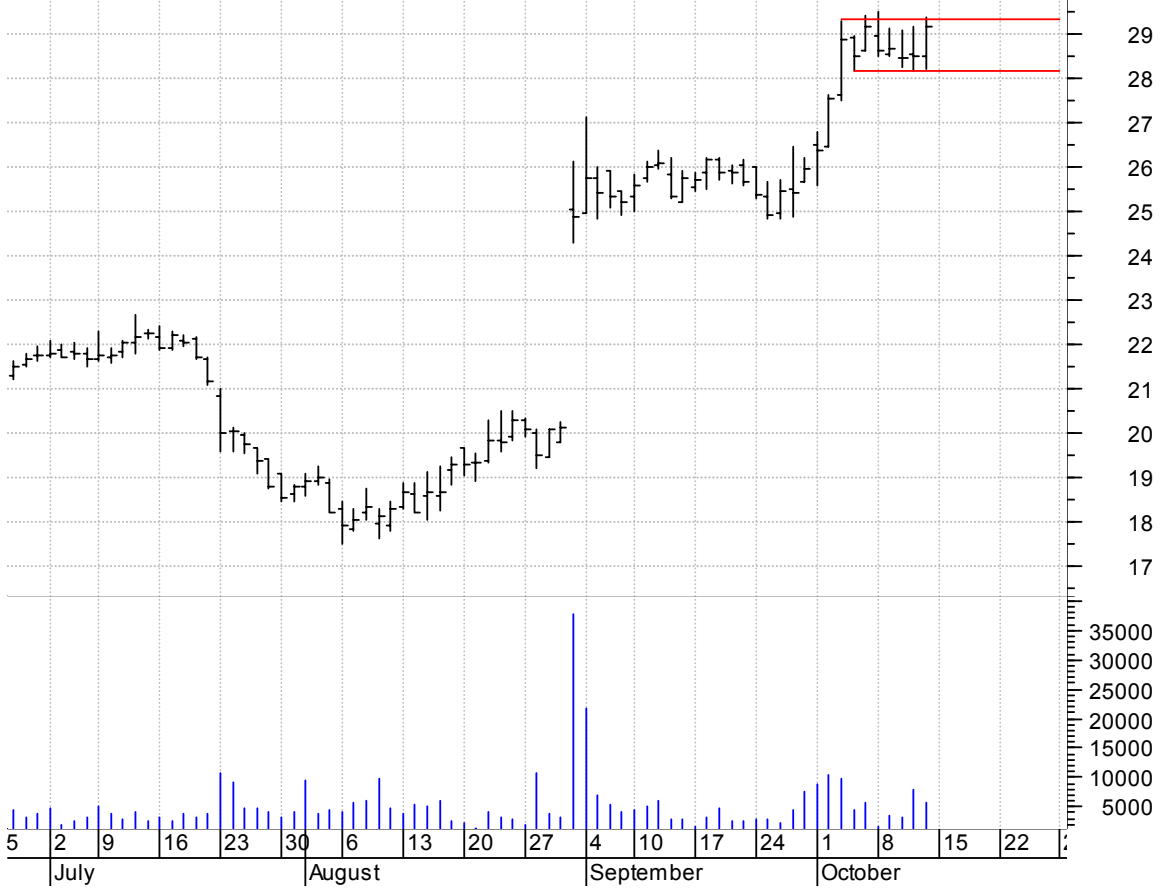


**OSK falling wedge preceded by 'pole-like' move / buy on upside breakout on increased volume**



**OTEX rectangle preceded by 'pole-like' move / buy on upside brkout on increased volume**

Open Text Corp:O (28.5100, 29.4000, 28.2100, 29.1900 +0.6900)



**RBN bull flag / buy on upside brkout thru dotted red line on larger than normal volume**

Robbins & Myers (55.4900, 59.7000, 54.1100, 59.7000 +4.0600)



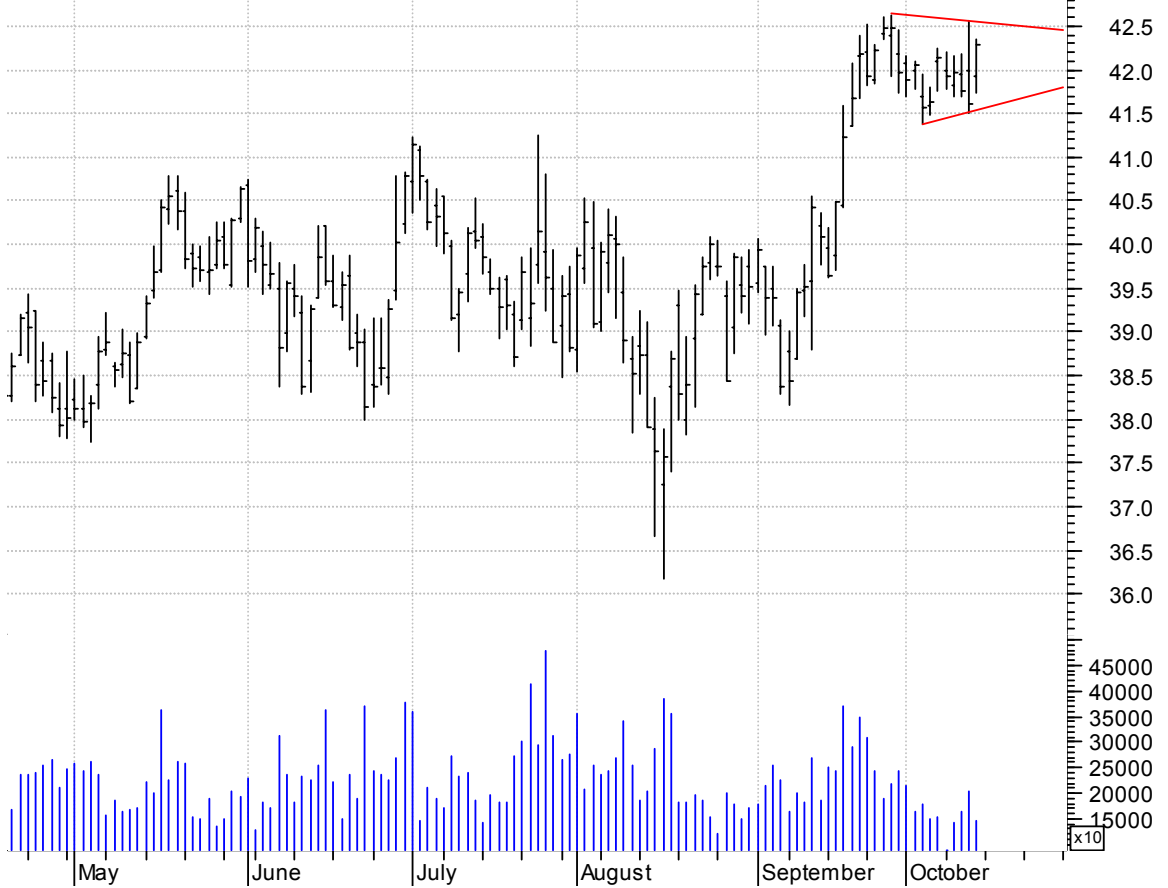
**SWKS symm. tri. / buy on upside brkout on increased volume**

Skyworks Solutio (8.8000, 9.0100, 8.8000, 8.9700 +0.1500)



**T symm. tri. preceded by 'pole-like' move / buy on upside brkout on increased volume**

AT&T Corp:NYSE (41.9300, 42.3500, 41.7400, 42.2900 +0.6800)



**TRIB symm. tri. / buy on upside brkout on increased volume**

Trinity Biotech (10.6600, 11.1100, 10.6600, 10.9100 +0.2100)



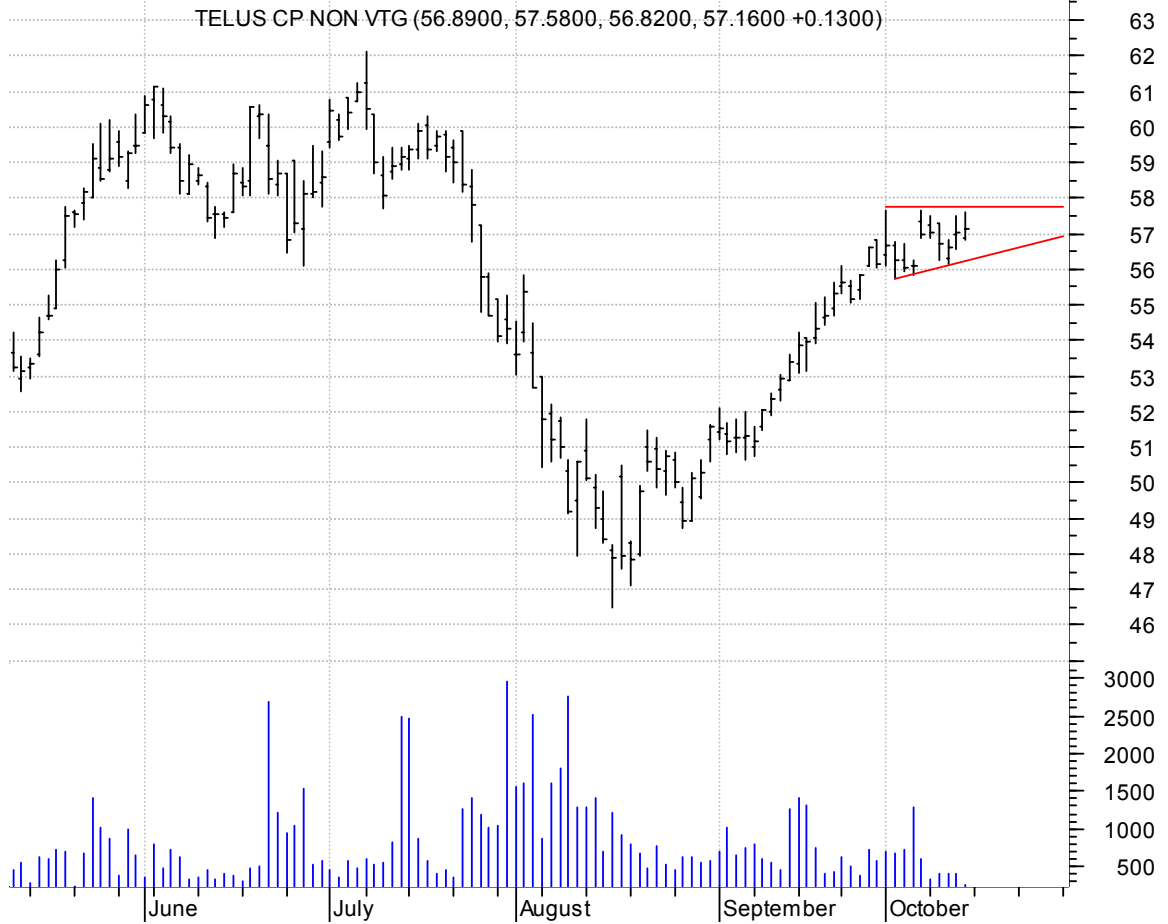
**TTEK asc. tri. / buy on upside brkout on increased volume**

Tetra Tech Inc:O (21.8900, 22.3500, 21.6100, 22.2100 +0.3100)





### TU asc. tri. / buy on upside breakout on increased volume



### TXCO asc. tri. / buy on upside breakout on increased volume



**UAUA symm. tri. / buy on upside brkout on increased volume**

UAL CORP:OTC (47.9500, 47.9700, 47.1000, 47.8200 +0.2100)



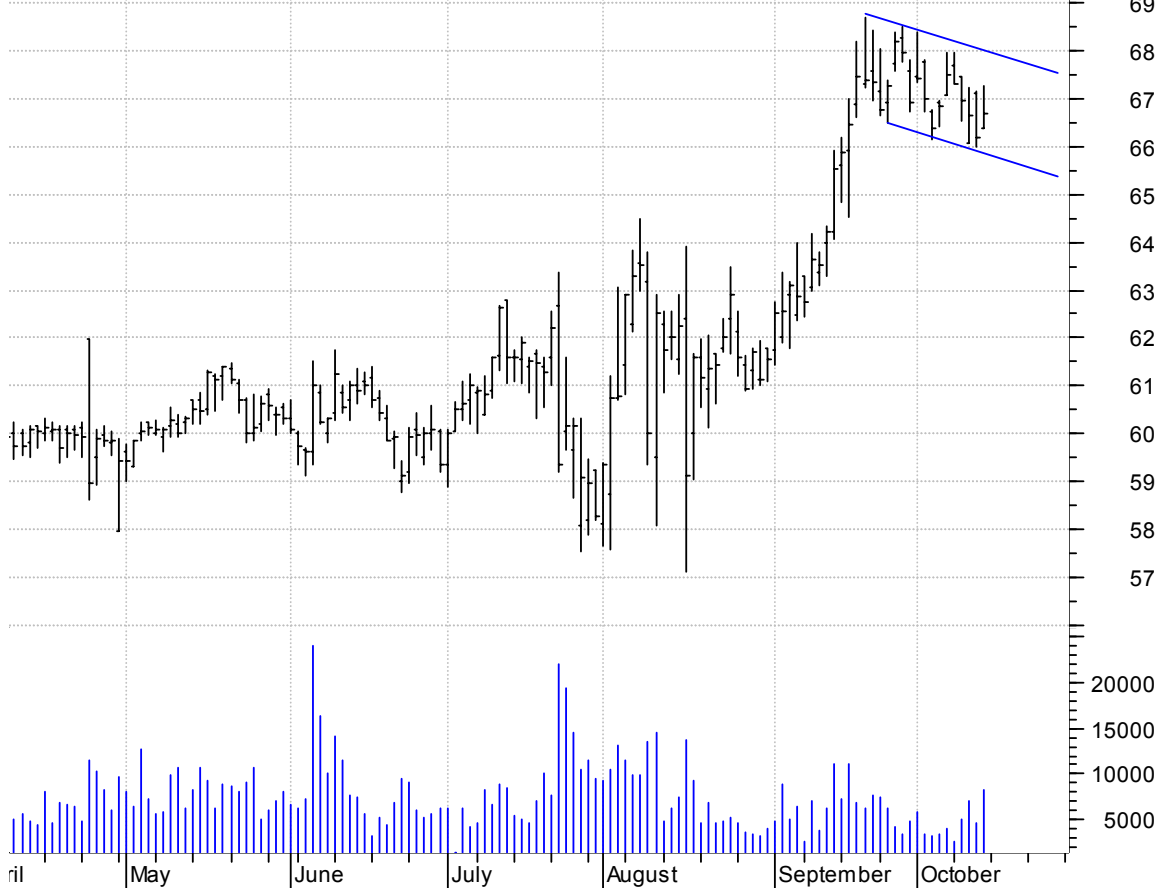
**UIL asc. tri. / buy on upside brkout on increased volume**

UIL Holdings Cor (32.7900, 33.7100, 32.7900, 33.3500 +0.5400)



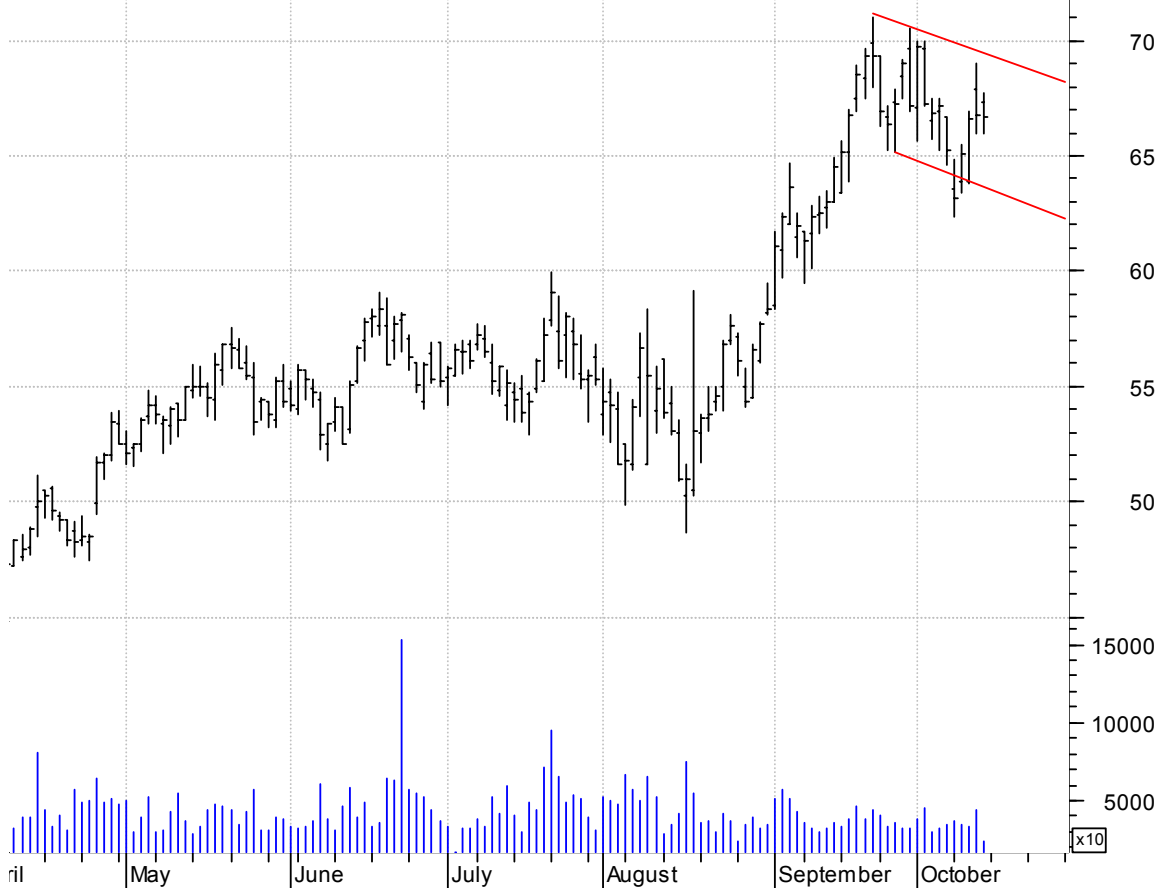
**WAT bull flag / buy on upside brkout on increased volume**

Waters Corp:NYSE (66.4000, 67.2700, 66.3700, 66.6900 +0.4900)



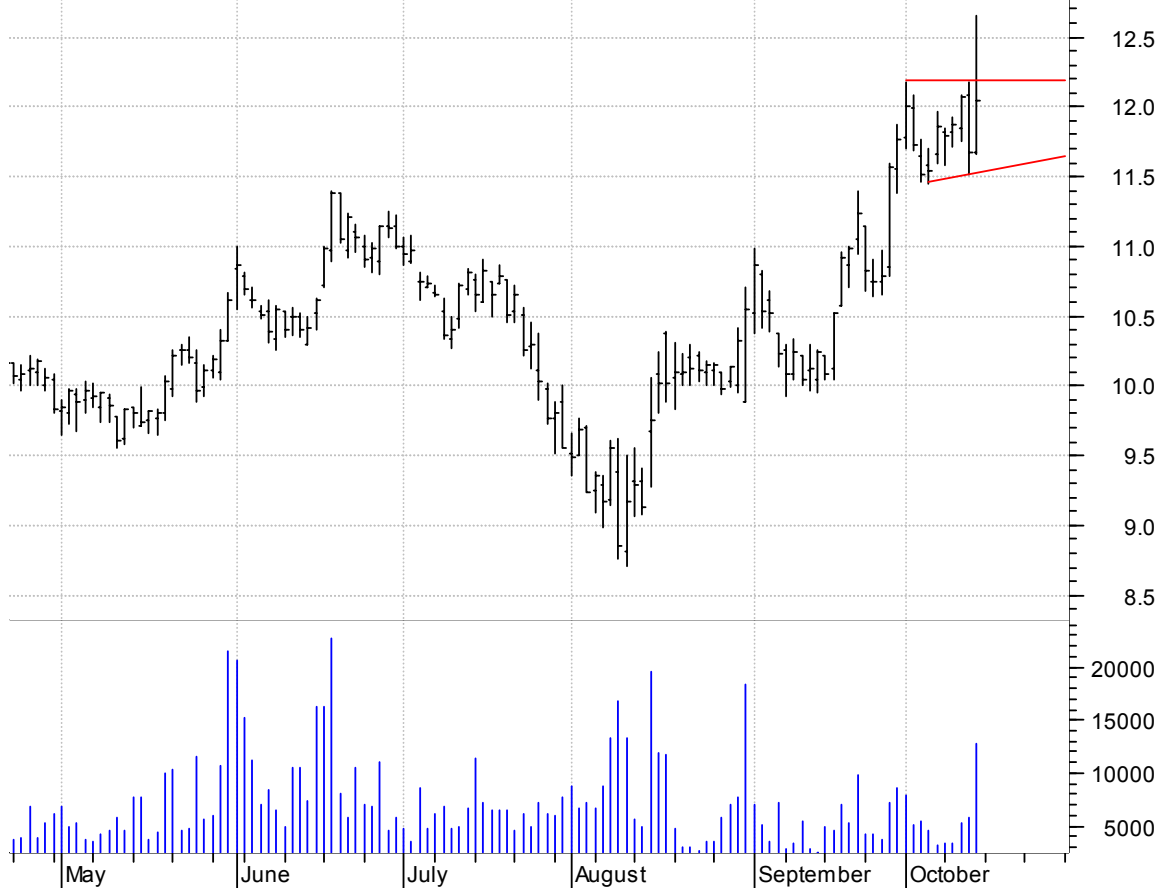
**WFT sloppy bull flag / buy on upside brkout on increased volume**

Weatherford Intl (67.3500, 67.7100, 65.9400, 66.7000 -0.0700)



**WIND sloppy asc. tri. preceded by 'pole-like' move / buy on upside brkout on lgr than normal volume**

Wind River Syste (11.6700, 12.6500, 11.6600, 12.0400 +0.3700)

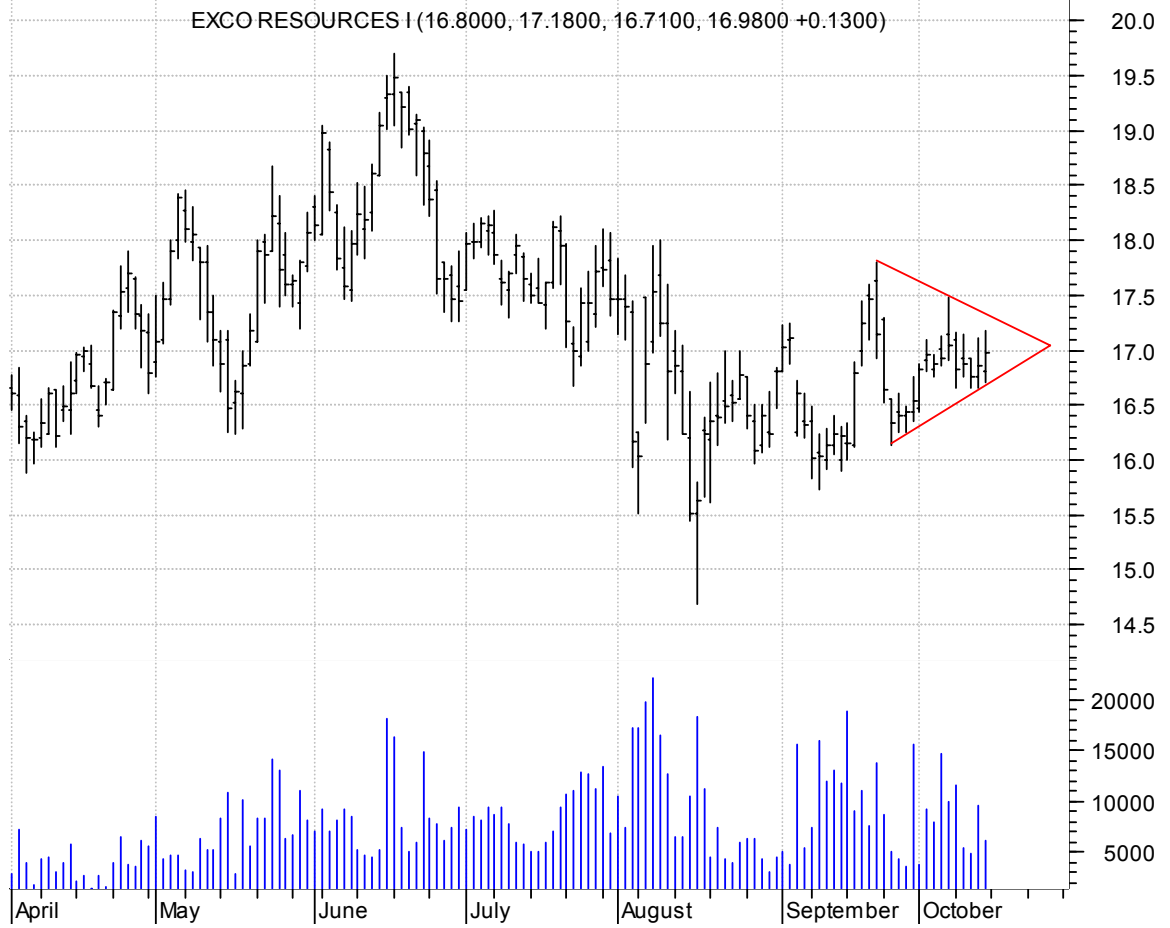


**WMGI sloppy asc. tri. / buy on upside brkout on increased volume**

WRIGHT MEDICAL G (27.5300, 28.0000, 27.3200, 27.3900 -0.0500)



**XCO symm. tri. / buy on upside brkout on increased volume**



**chartpatterns.com**  
Chart Pattern Analysis for Timing the Markets

[KMatras@aol.com](mailto:KMatras@aol.com)