

ALGN symm. tri. / buy on upside brkout on increased volume

ALIGN TECHNOLOGY (26.5700, 26.9900, 25.8000, 26.4800 -0.4500)



BLUD falling wedge preceded by 'pole-like' move / buy on upside brkout on increased volume

Immucor Inc:OTC (31.9800, 33.3500, 31.2300, 32.2400 -0.3100)



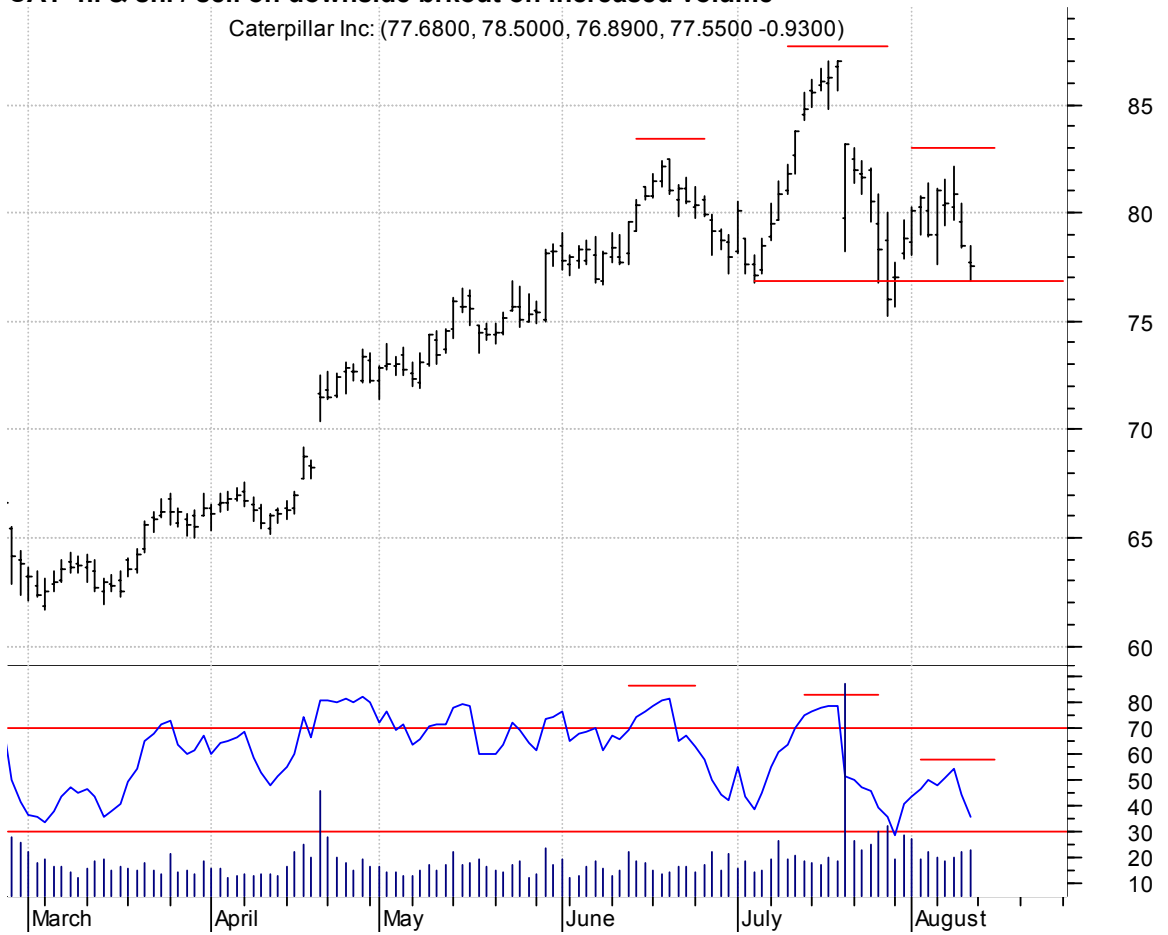
BRLC symm. tri. / buy on upside brkout on increased volume

SYNTAX-BRILLIAN (6.2900, 6.3200, 6.0200, 6.1800 -0.1800)



CAT h. & sh. / sell on downside brkout on increased volume

Caterpillar Inc: (77.6800, 78.5000, 76.8900, 77.5500 -0.9300)



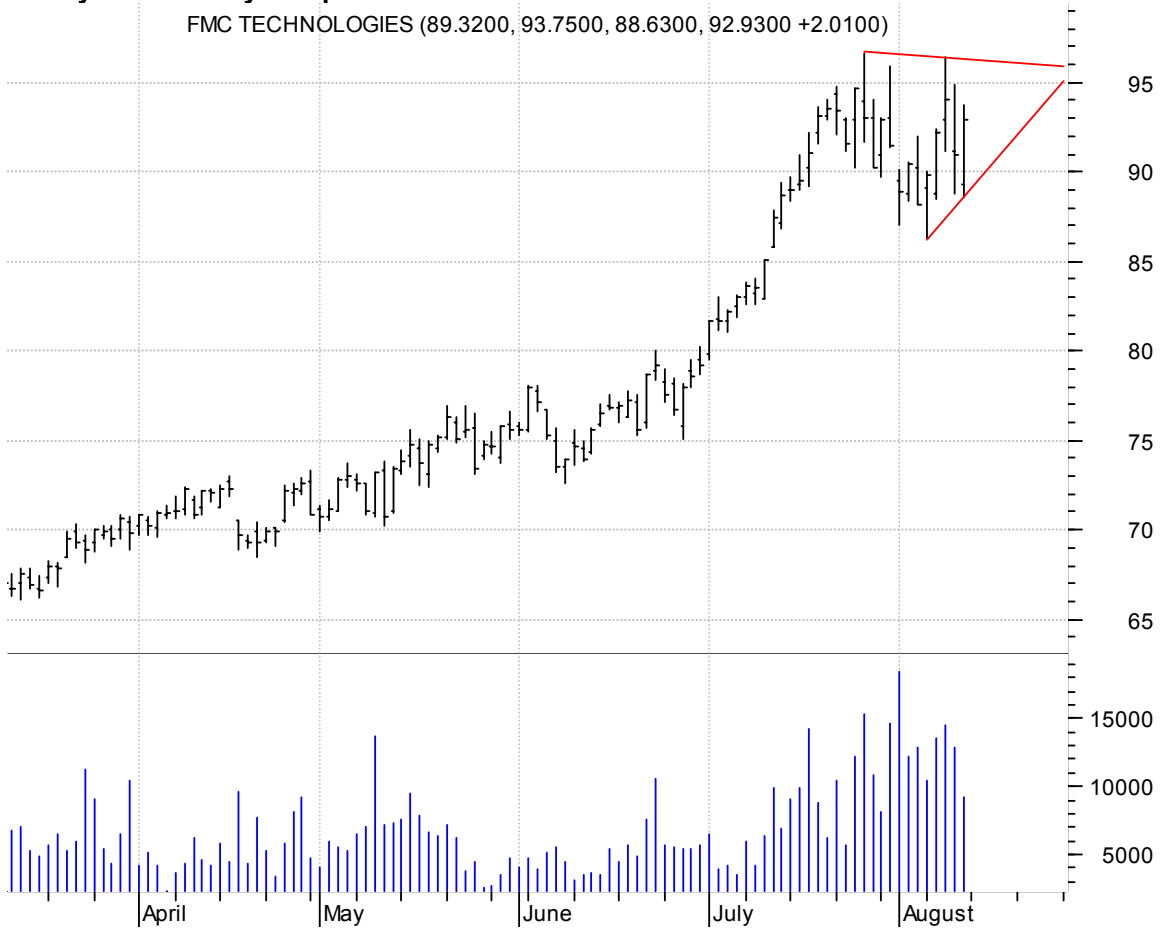
FLR asc. tri. / buy on upside breakout on larger than normal volume

FLUOR CP:NYSE (118.020, 123.000, 115.430, 121.000 +0.6800)



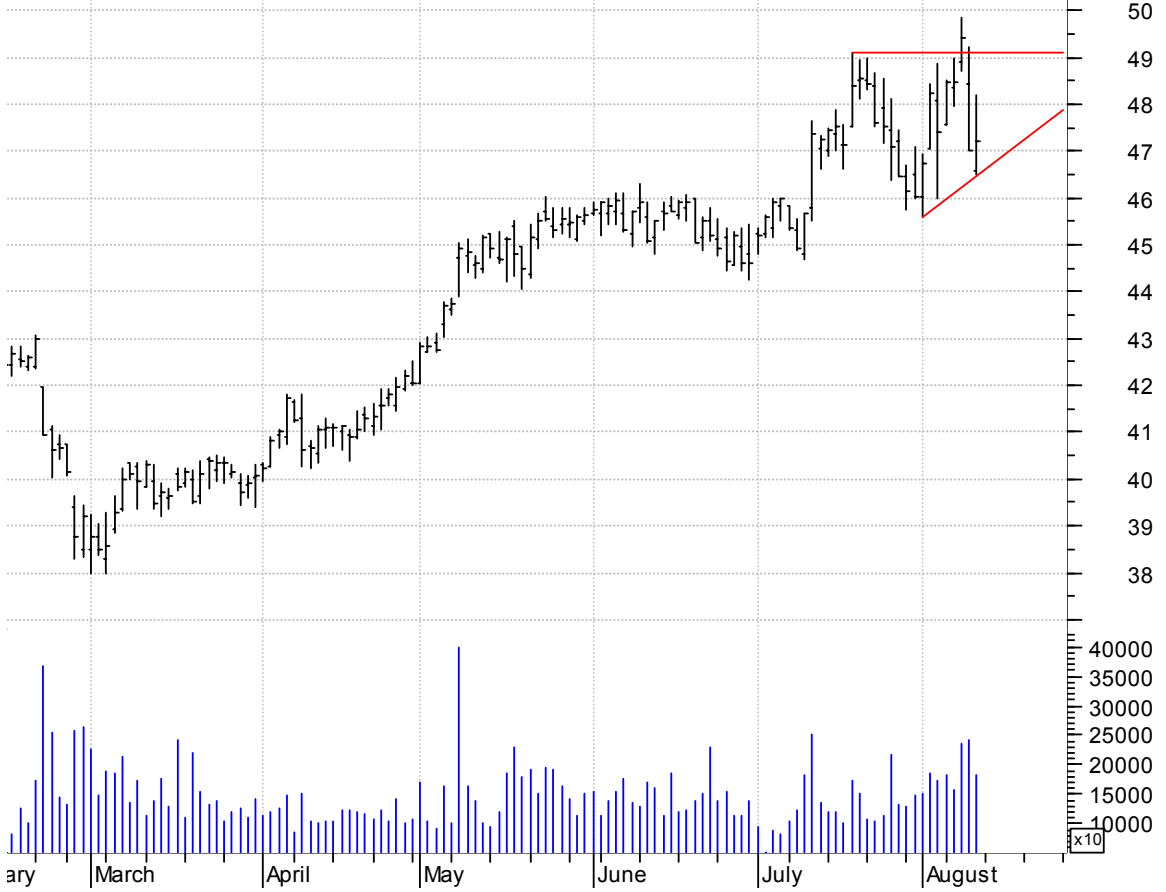
FTI symm. tri. / buy on upside breakout on increased volume

FMC TECHNOLOGIES (89.3200, 93.7500, 88.6300, 92.9300 +2.0100)



HPQ sloppy asc. tri. / buy on upside brkout on increased volume

Hewlett-Packard (46.5600, 48.1900, 46.4800, 47.2100 +0.1900)



MRK symm. tri. / buy on upside brkout on increased volume

Merck & Co Inc:N (51.4400, 51.7000, 50.0500, 50.8800 -0.5600)



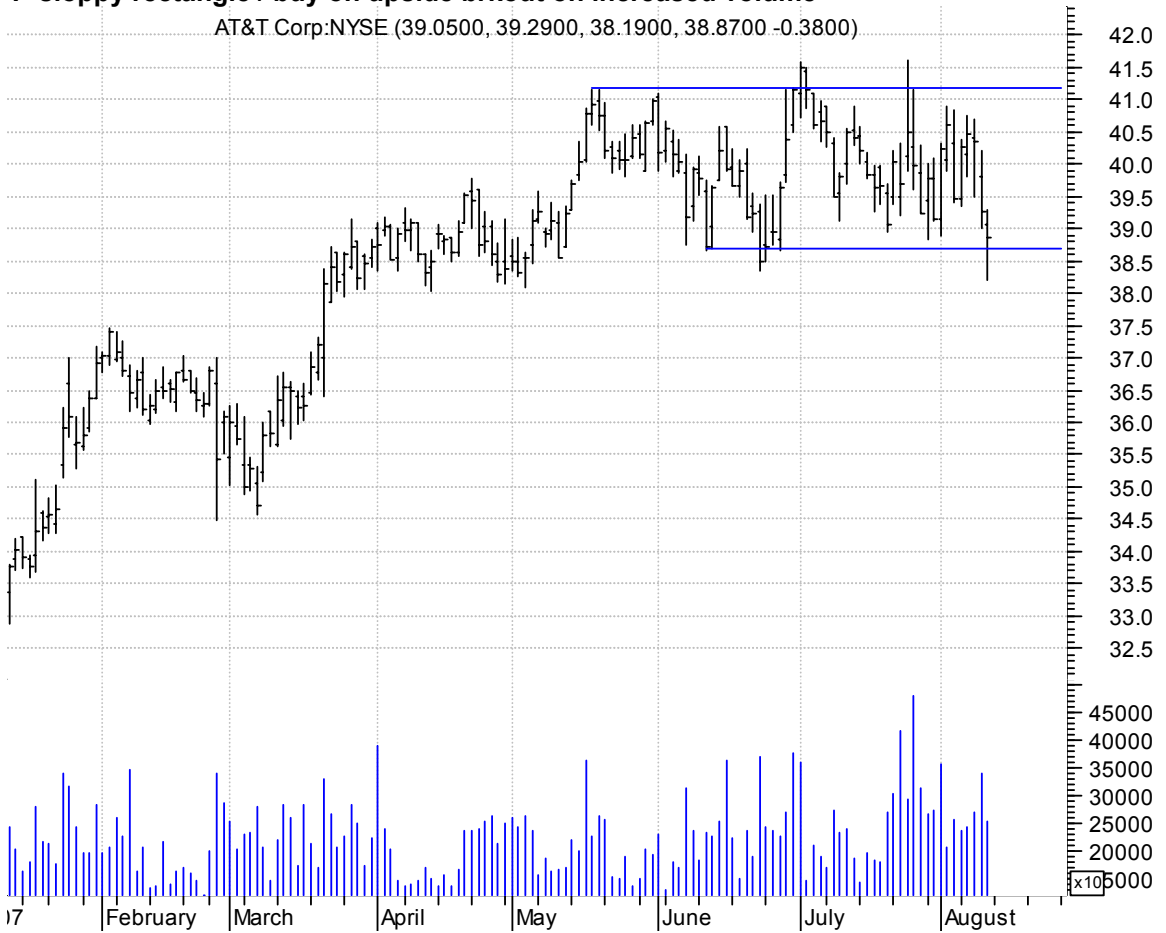
OMCL bullish flagging / buy on upside brkout on increased volume

OMNICELL INC:OTC (24.3200, 25.1300, 23.6600, 24.6000 +0.0400)



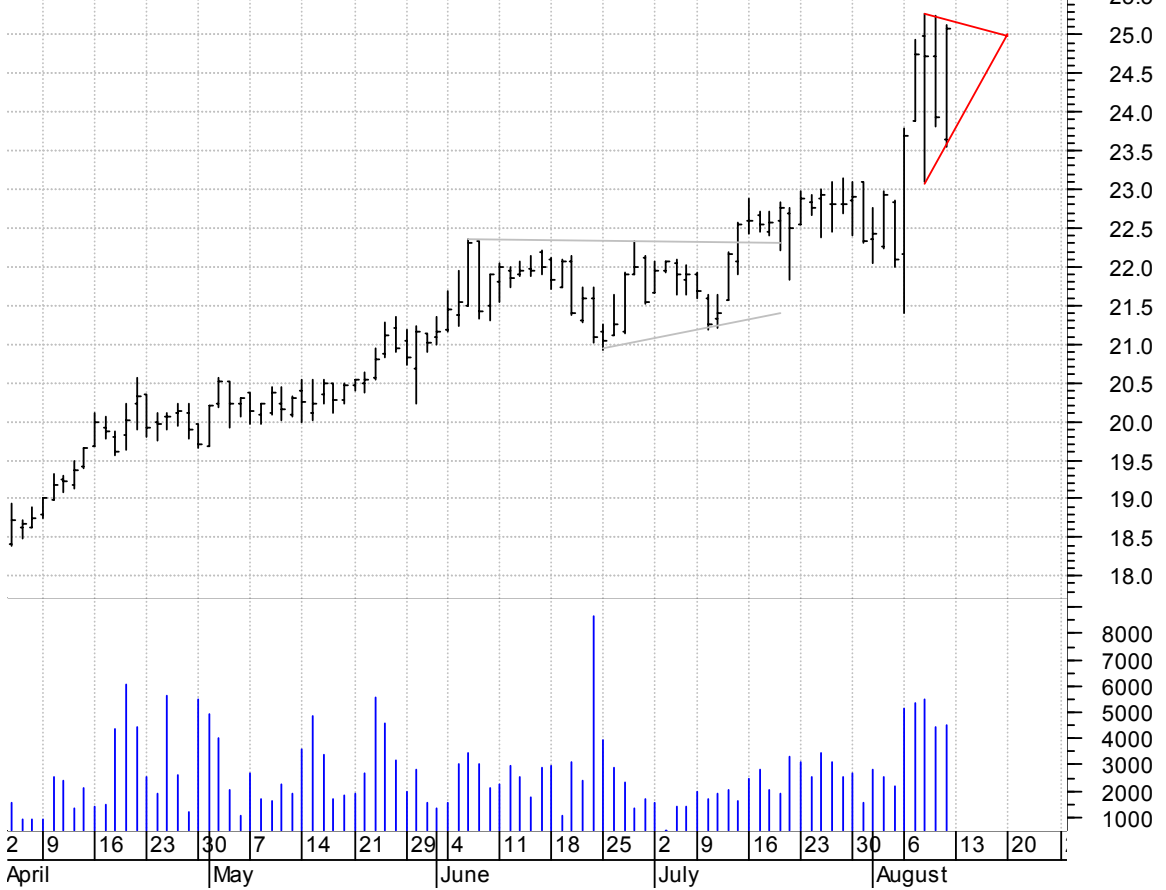
T sloppy rectangle / buy on upside brkout on increased volume

AT&T Corp:NYSE (39.0500, 39.2900, 38.1900, 38.8700 -0.3800)



VIVO symm. tri. preceded by 'pole-like' move / buy on upside breakout on increased volume

Meridian Bioscie (23.6400, 25.1200, 23.5500, 25.0900 +1.1500)



WOOF symm. tri. / buy on upside breakout on increased volume

VCA ANTECH INC:O (41.7100, 41.8700, 39.5400, 40.6500 -1.7000)



chartpatterns.com
Chart Pattern Analysis for Timing the Markets

KMatras@aol.com