

**ACL falling wedge / buy on upside brkout on increased volume**

ALCON INC:NYSE (136.500, 136.550, 134.530, 134.910 -0.0900)



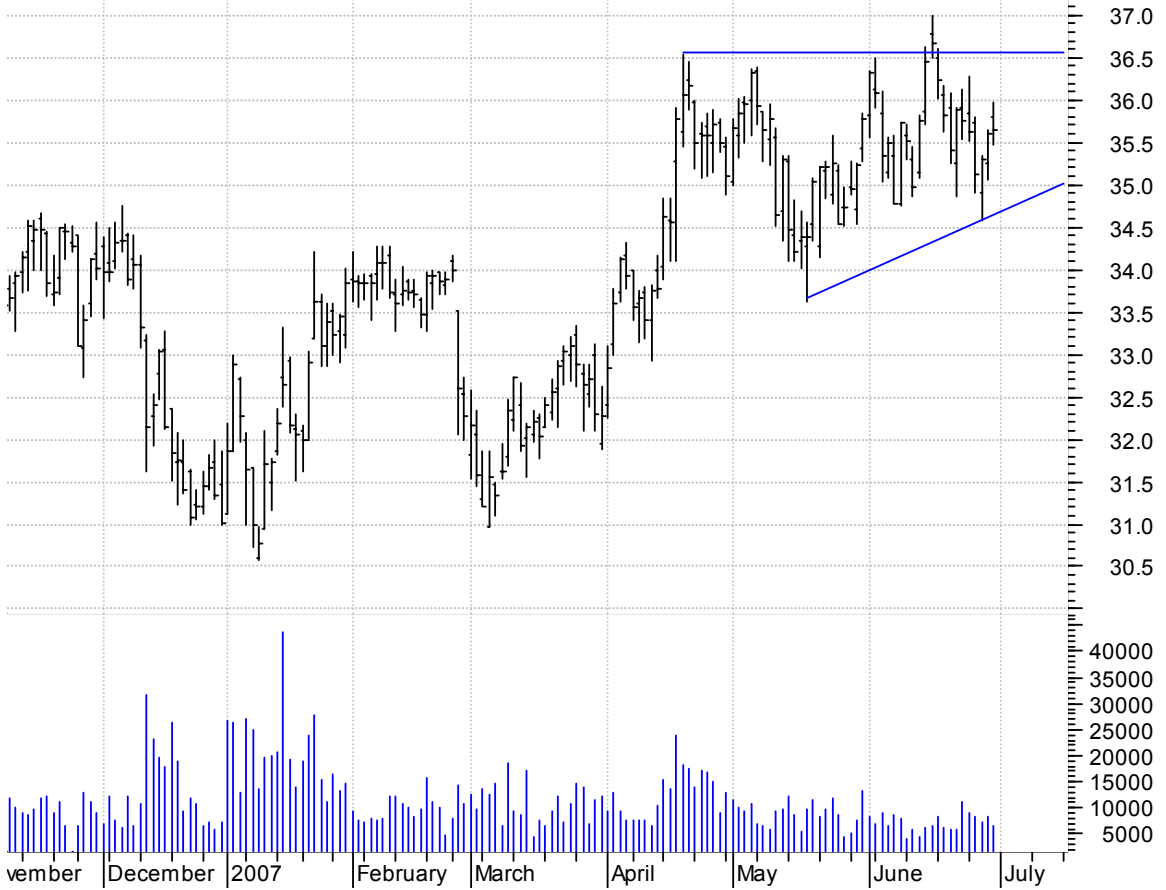
**AMX asc. tri. / buy on upside brkout on increased volume**

AMERICA MOVIL SA (62.2700, 62.9500, 61.1900, 61.9300 -0.2600)



**APH sloppy asc. tri. / buy on upside breakout on increased volume**

Amphenol Cp:NYSE (35.7900, 35.9800, 35.4700, 35.6500 +0.0500)



**ARG bull flag / buy on upside breakout on increased volume**

Airgas Inc:NYSE (47.5100, 48.2400, 47.5100, 47.9000 +0.5000)



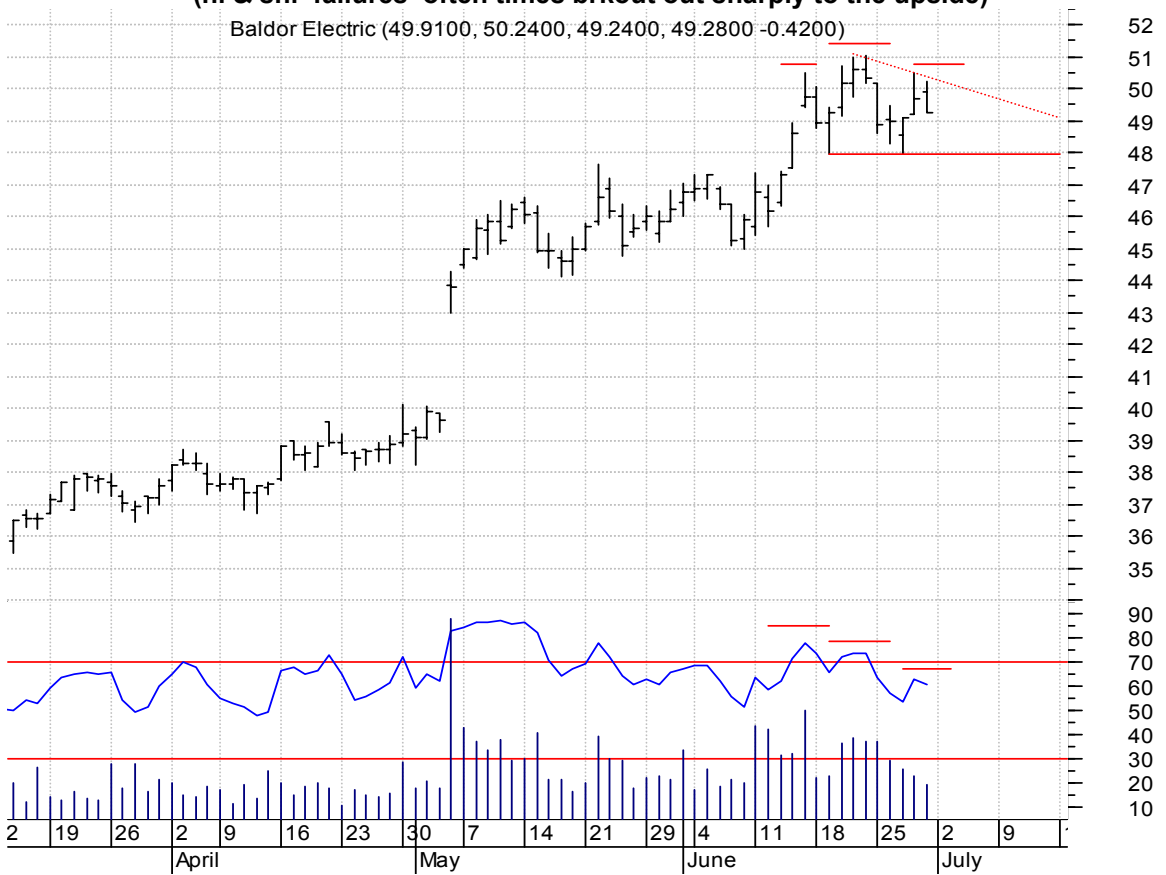
**BBBB asc. tri. / buy on upside brkout on larger than normal volume**

BLACKBOARD INC:O (42.2900, 43.7100, 41.7100, 42.1200 -0.1000)



**BEZ h. & sh. / sell on downside brkout on increased volume or  
buy on upside brkout on increased volume  
(h. & sh. 'failures' often times brkout out sharply to the upside)**

Baldor Electric (49.9100, 50.2400, 49.2400, 49.2800 -0.4200)



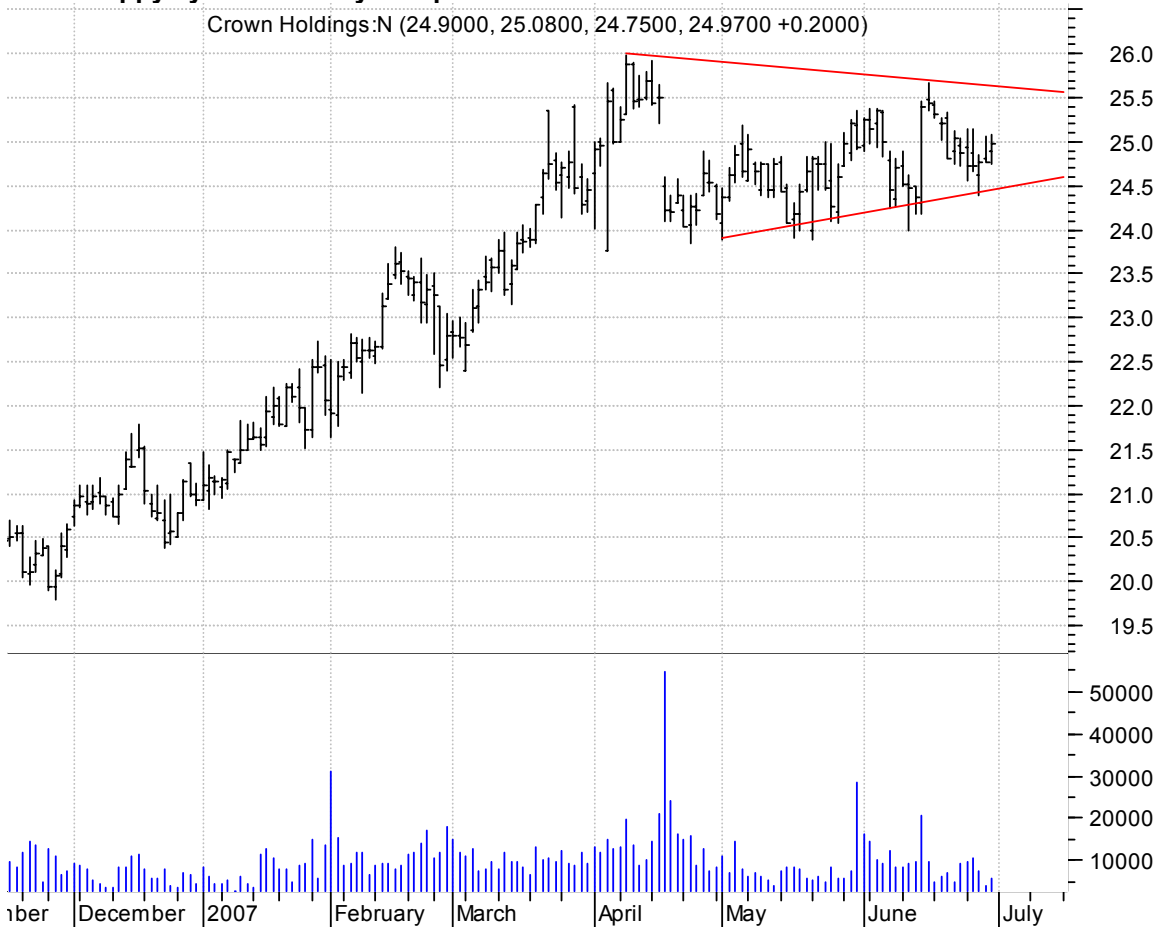
**CBE symm. tri. / buy on upside breakout on increased volume**

Cooper Industrie (57.4300, 57.5900, 56.7800, 57.0900 -0.3600)



**CCK sloppy symm. tri. / buy on upside breakout on increased volume**

Crown Holdings:N (24.9000, 25.0800, 24.7500, 24.9700 +0.2000)



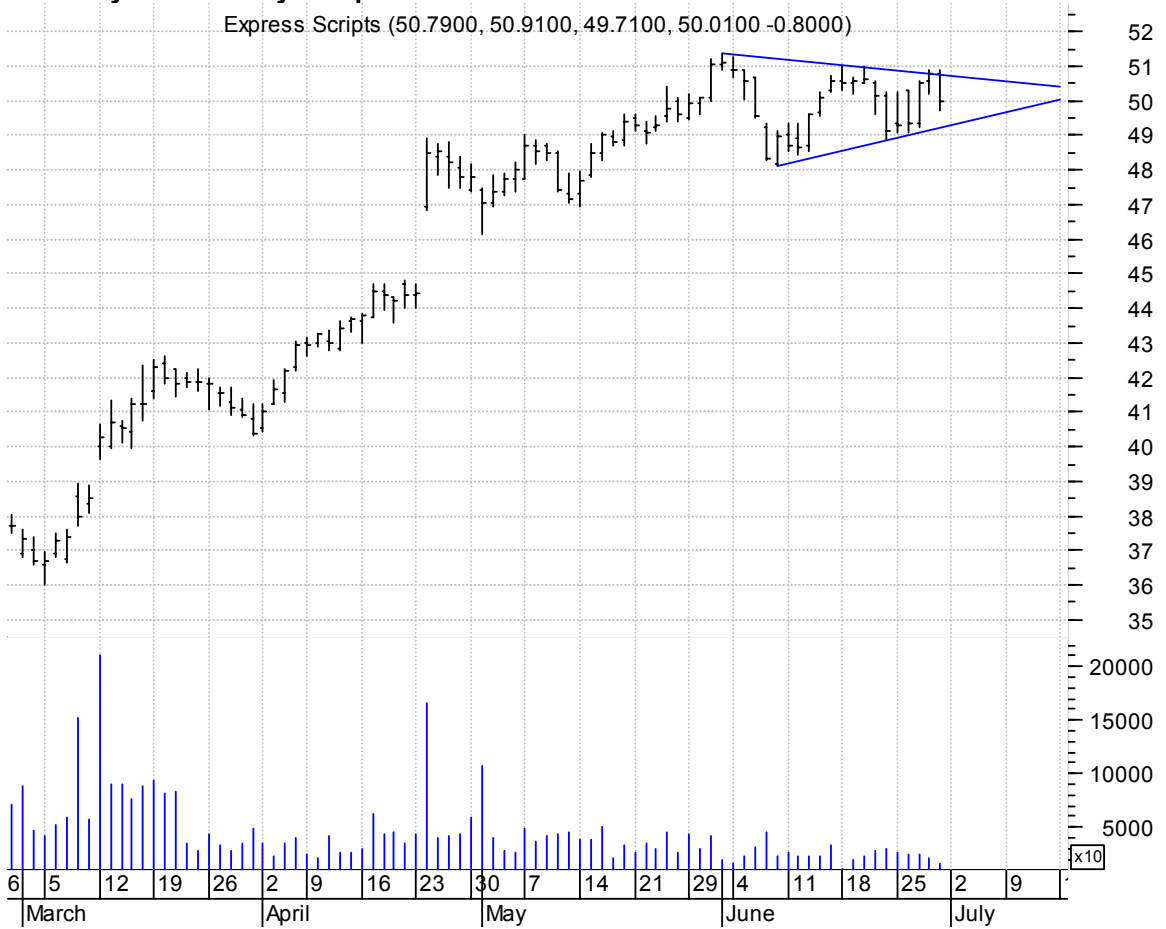
**CXW bullish flagging / buy on upside breakout on larger than normal volume**

Correction Cp of (63.2100, 64.2200, 62.8100, 63.1100 -0.1000)

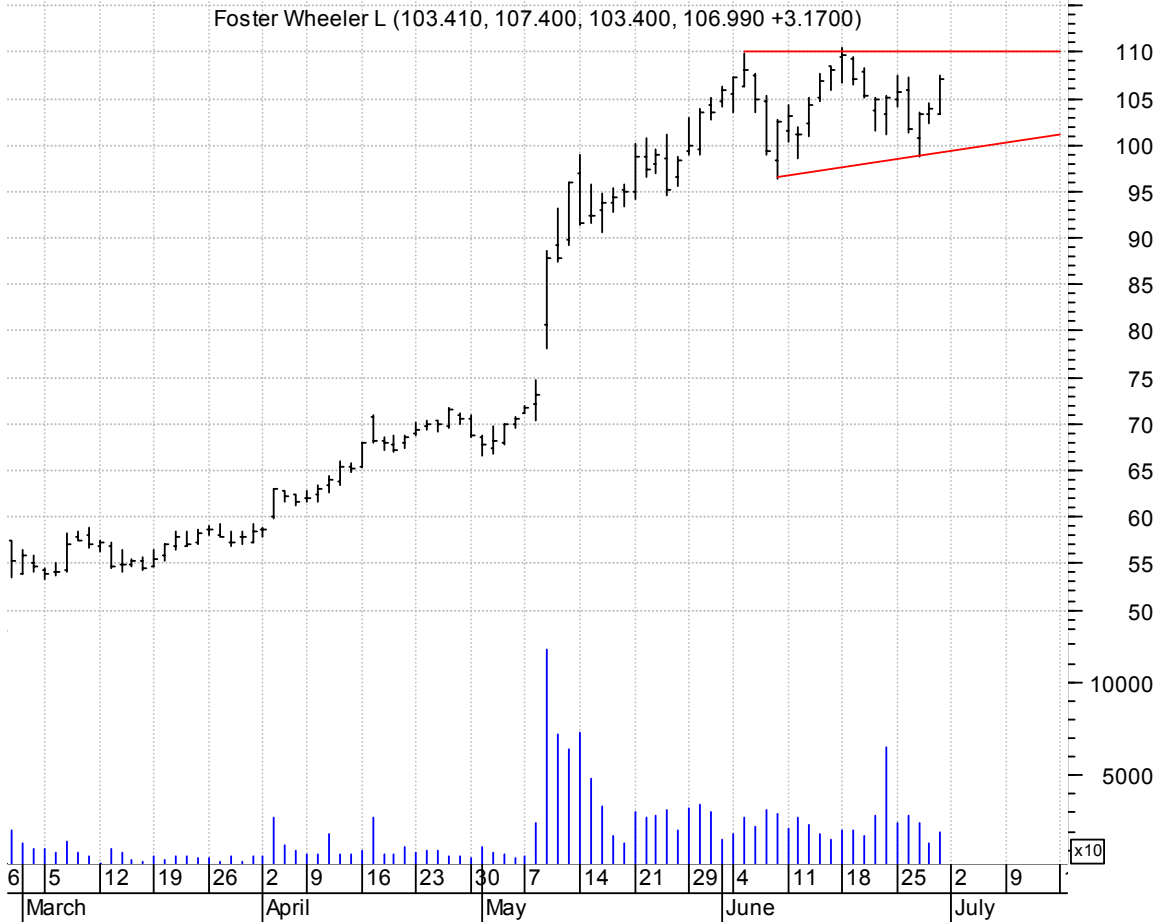


**ESRX symm. tri. / buy on upside breakout on increased volume**

Express Scripts (50.7900, 50.9100, 49.7100, 50.0100 -0.8000)



**FWLT asc. tri. / buy on upside brkout on increased volume**

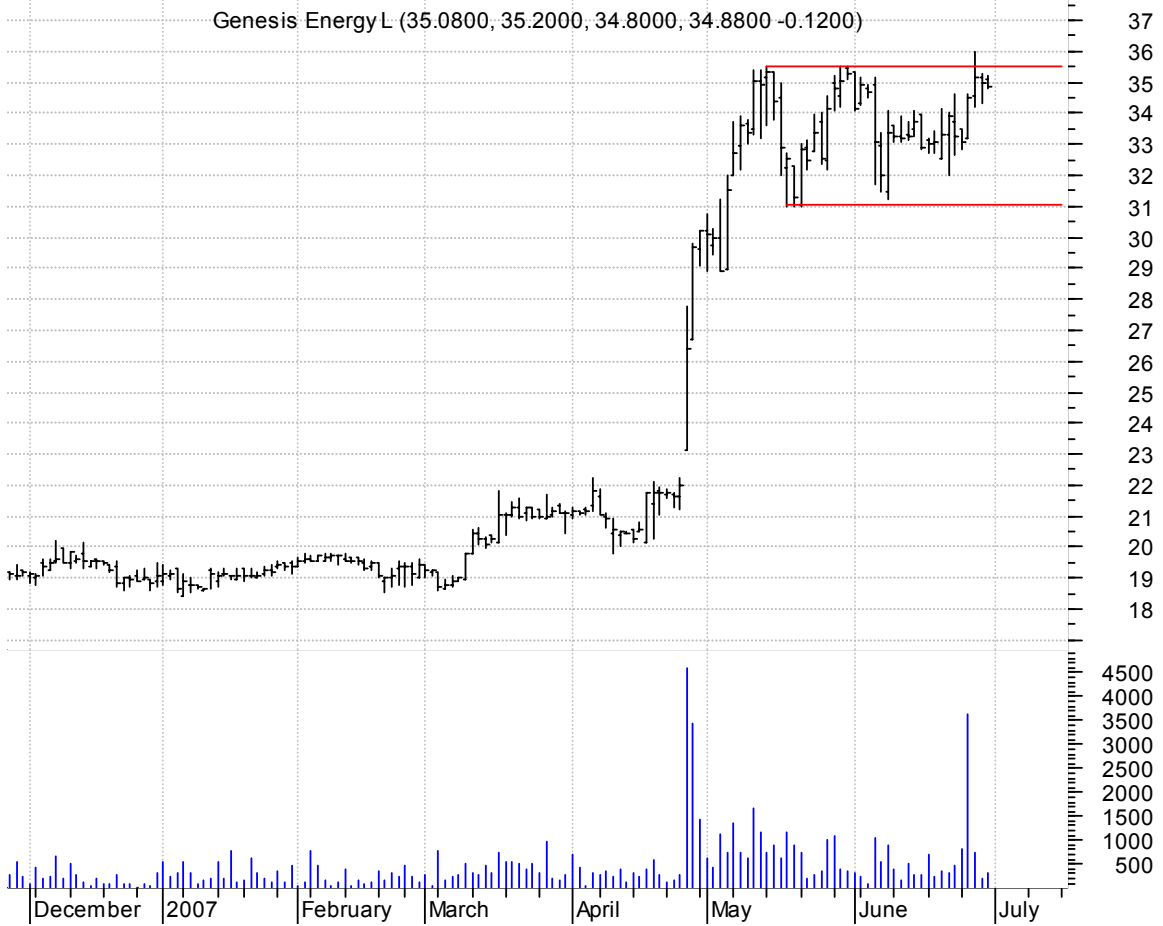


**GCOM asc. tri. / buy on upside brkout on increased volume**



**GEL rectangle preceded by 'pole-like' move / buy on upside breakout on increased volume**

Genesis Energy L (35.0800, 35.2000, 34.8000, 34.8800 -0.1200)



**HAYN bullish flagging / buy on upside breakout on increased volume**

Haynes Internati (86.1300, 86.8000, 84.3300, 84.4300 -1.5700)



**IMA sloppy symm. tri. / buy on upside brkout on increased volume**



**JEC asc. tri. / buy on upside brkout on increased volume**





**KO bullish flagging / buy on upside breakout on increased volume**

Coca Cola Co:NYS (52.8400, 52.9500, 51.9500, 52.3100 -0.3200)



**LDSH asc. tri. / buy on upside breakout on increased volume**

Ladish Co:OTC (42.6600, 43.6800, 42.6600, 43.0000 +0.2600)



**LNUX symm. tri. / buy on upside brkout on increased volume**

SourceForge:OTC (4.2500, 4.3300, 4.1500, 4.2200 -0.0200)



**MA bull flag / buy on upside brkout on increased volume**

MASTERCARD INCOR (166.090, 167.190, 163.740, 165.870 +1.2400)



**MMM symm. tri. / buy on upside brkout on increased volume**

3M Company:NYSE (87.1000, 87.8600, 86.2200, 86.7900 -0.0600)



**MMS asc. tri. / buy on upside brkout on increased volume**

Maximus Inc:NYSE (43.9800, 44.0900, 43.3500, 43.3800 -0.3800)



**MO bullish flagging / buy on upside brkout on increased volume**

Altria Group:NYS (70.0100, 70.5300, 69.5800, 70.1400 +0.2200)



**OSIS symm. tri. / buy on upside brkout on increased volume**

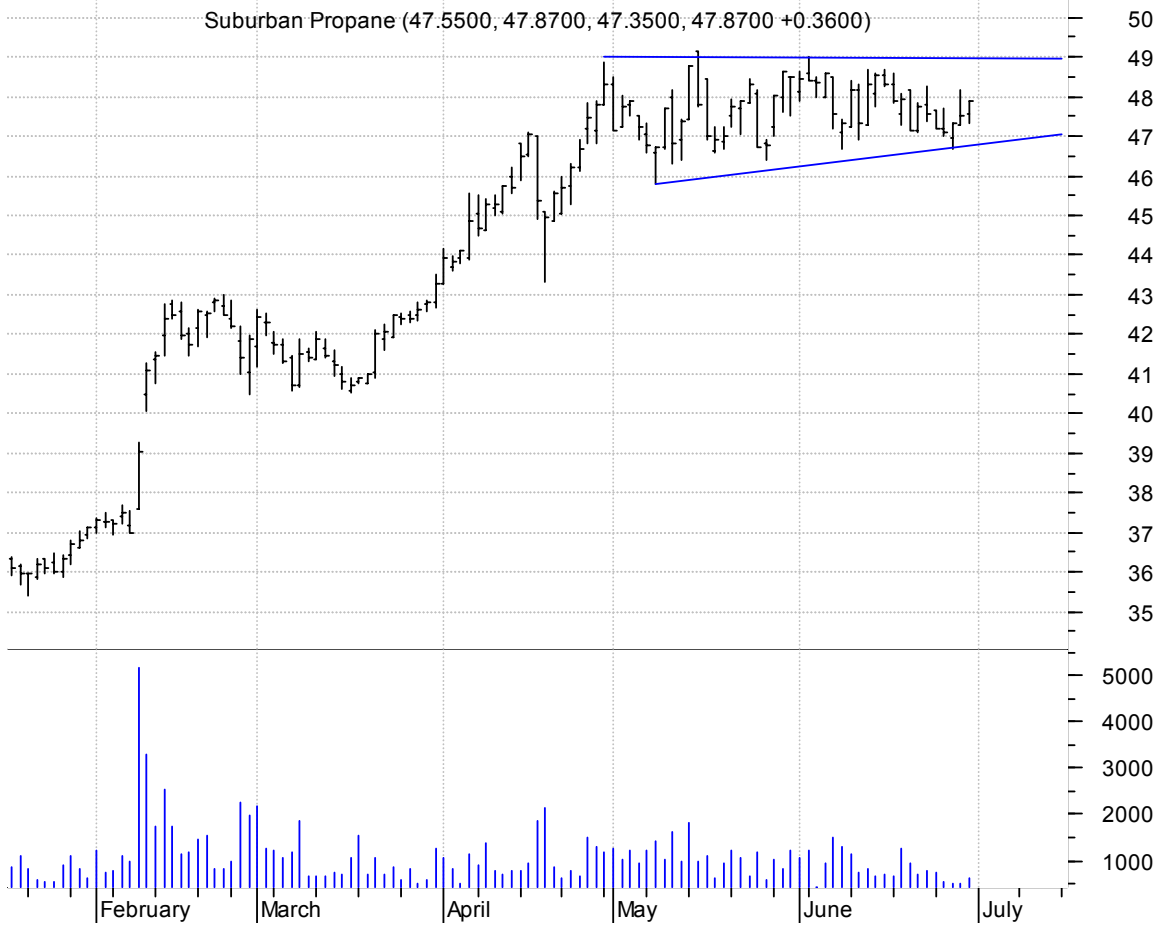
OSI Systems Inc: (27.5200, 27.9100, 27.0100, 27.3500 -0.1200)



**ROLL symm. tri. / buy on upside breakout on increased volume**



**SPH asc. tri. / buy on upside breakout on increased volume**



**SPN symm. tri. / buy on upside brkout on increased volume**

Superior Energy (39.6900, 40.4500, 39.5600, 39.9200 +0.5300)



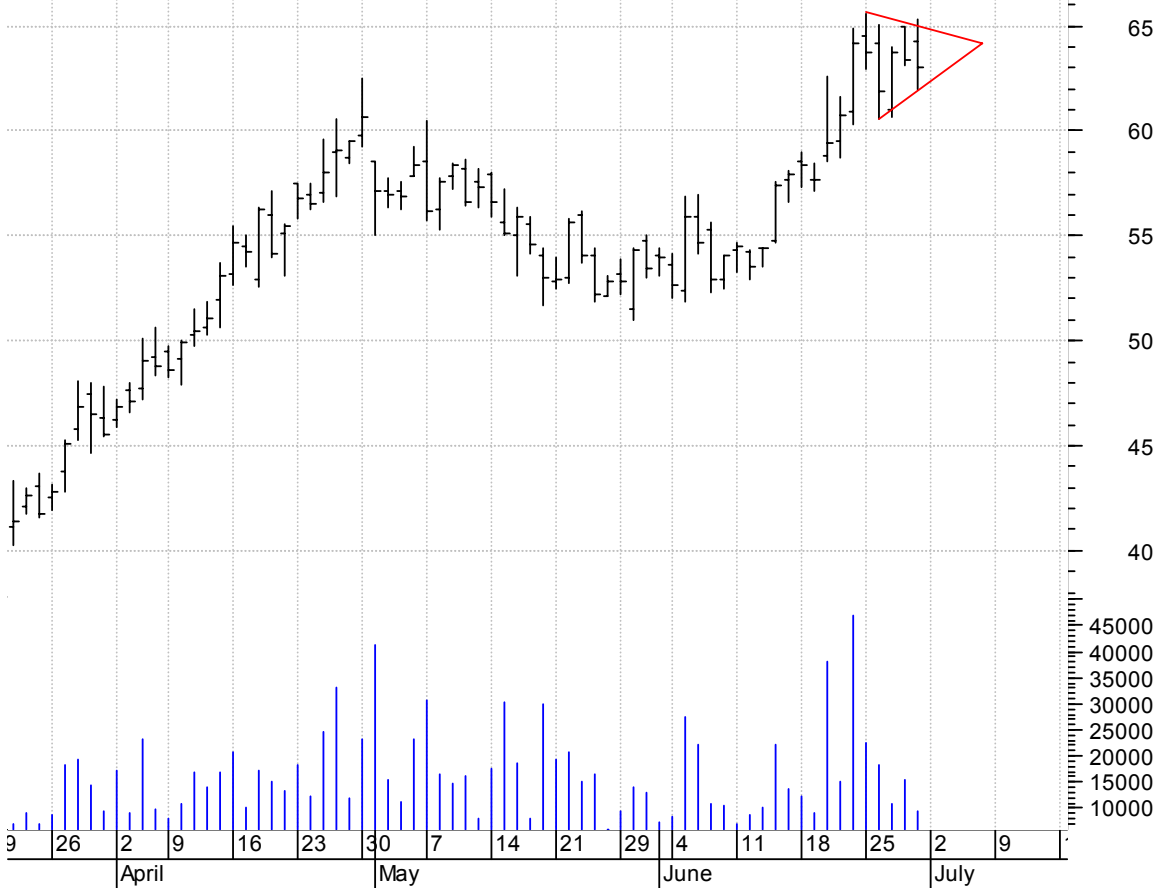
**SPSS symm. tri. / buy on upside brkout on increased volume**

SPSS Inc:OTC (43.5700, 44.3700, 43.3700, 44.1400 +0.8100)



**SPWR symm. tri. / buy on upside breakout on increased volume**

SUNPOWER CORPORA (64.2500, 65.2900, 62.0000, 63.0500 -0.3000)



**SVVS bullish flagging / buy on upside breakout on increased volume**

Sawis Cp:OTC (50.4900; 50.9900; 49.2800; 49.5100 -1.0300)



**TRAK asc. tri. / buy on upside brkout on increased volume**

DEALERTRACK HOLD (37.3100, 37.6900, 36.7500, 36.8400 -0.3900)



**TU bullish flagging / buy on upside brkout on increased volume**

TELUS CP NON VTG (58.8100, 59.6800, 58.1300, 58.9200 +0.3800)





**WYN symm. tri. / buy on upside brkout on increased volume**

Wyndham Worldwid (36.5000, 37.0900, 35.9700, 36.2600 -0.2100)



**XMSR inv. h. & sh. / buy on upside brkout on increased volume**

XM Satellite Rad (11.5700, 11.8700, 11.5100, 11.7700 +0.2100)



**chartpatterns.com**  
Chart Pattern Analysis for Timing the Markets

[KMatras@aol.com](mailto:KMatras@aol.com)