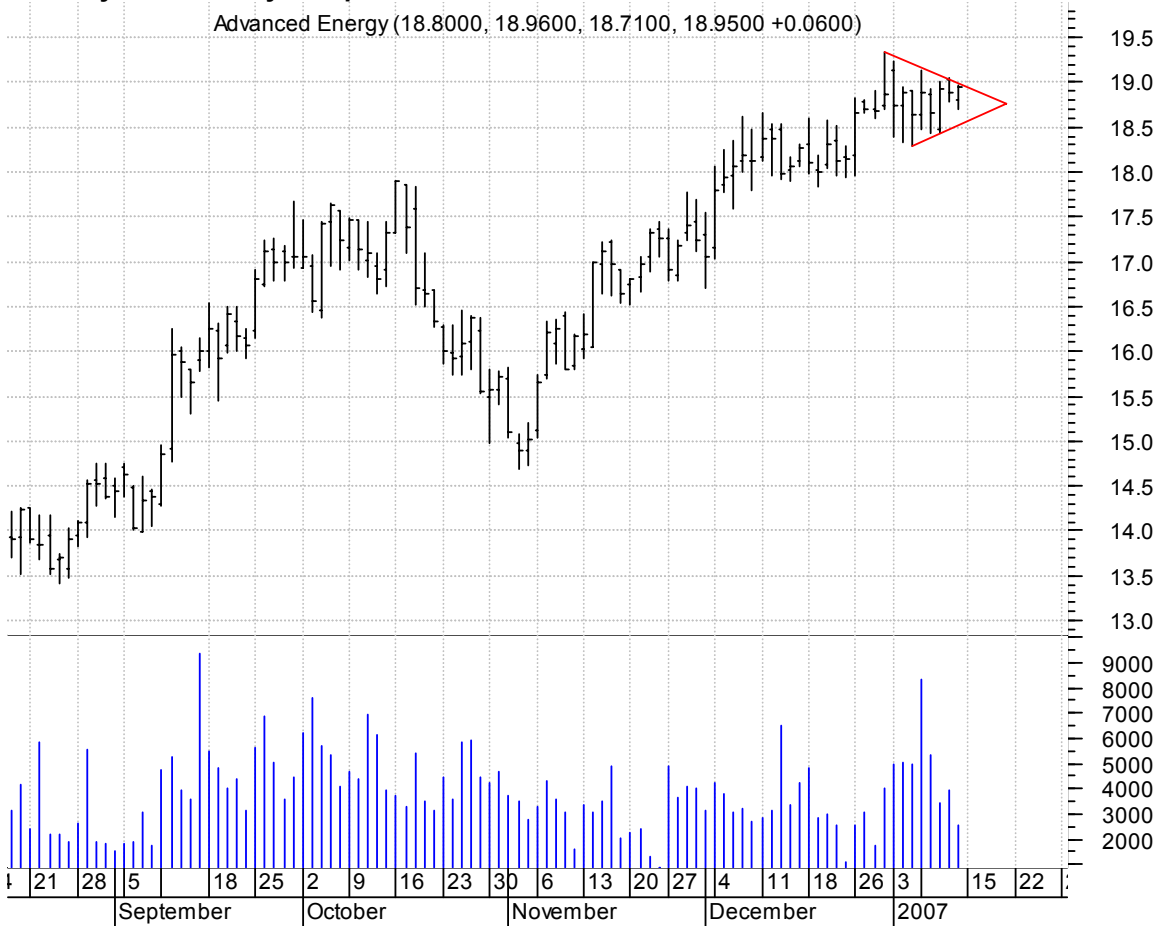


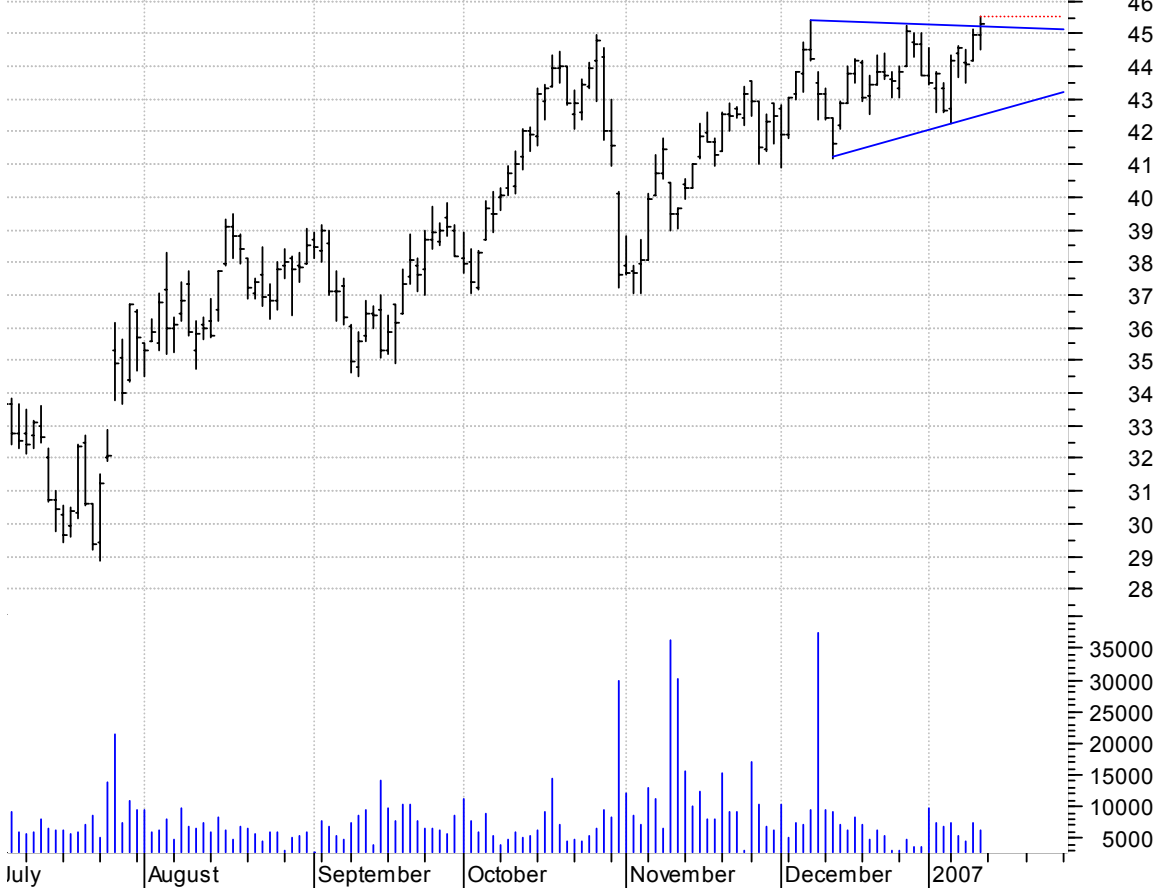
AEIS symm. tri. / buy on upside brkout on increased volume

Advanced Energy (18.8000, 18.9600, 18.7100, 18.9500 +0.0600)

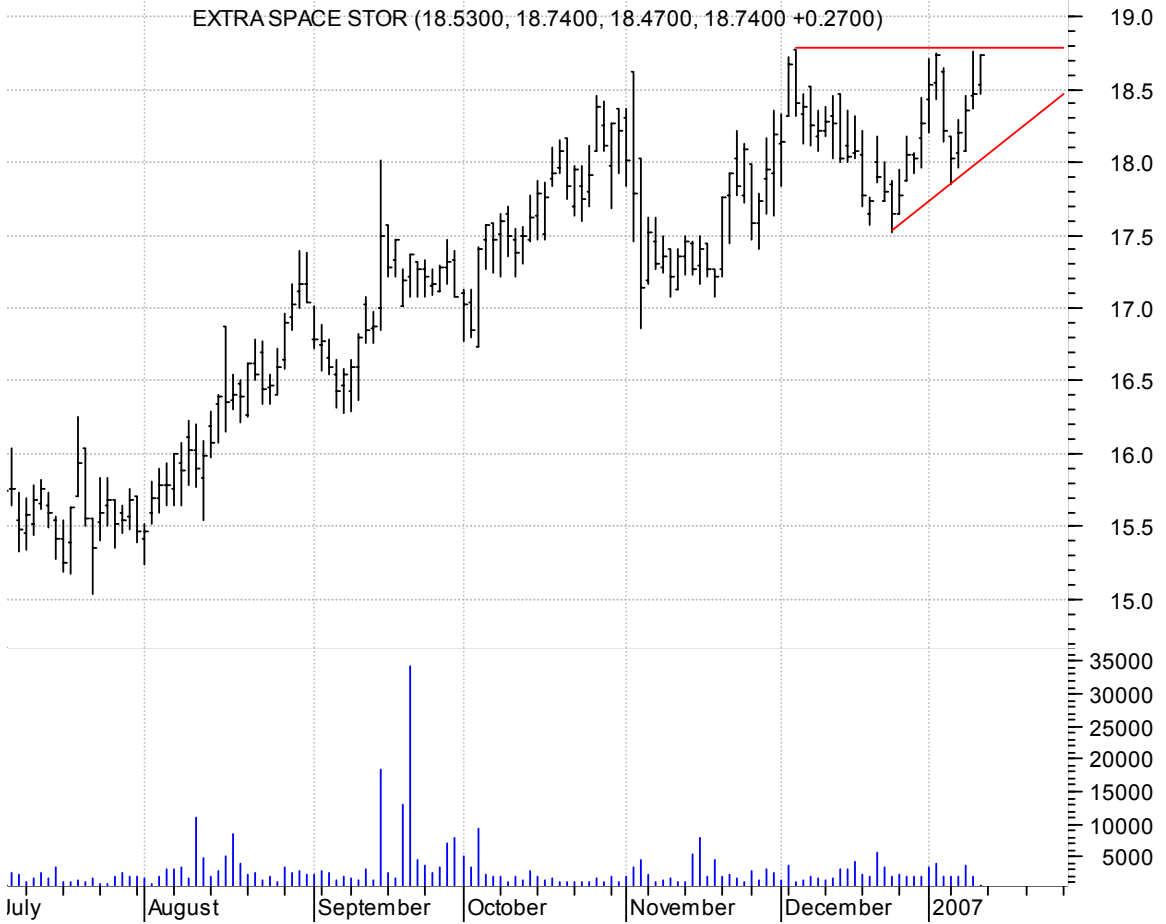


BGC symm. tri. brkout / buy on upside follow-thru (dotted red line) on increased volume

General Cable Co (44.9800, 45.5200, 44.4900, 45.3200 +0.3400)



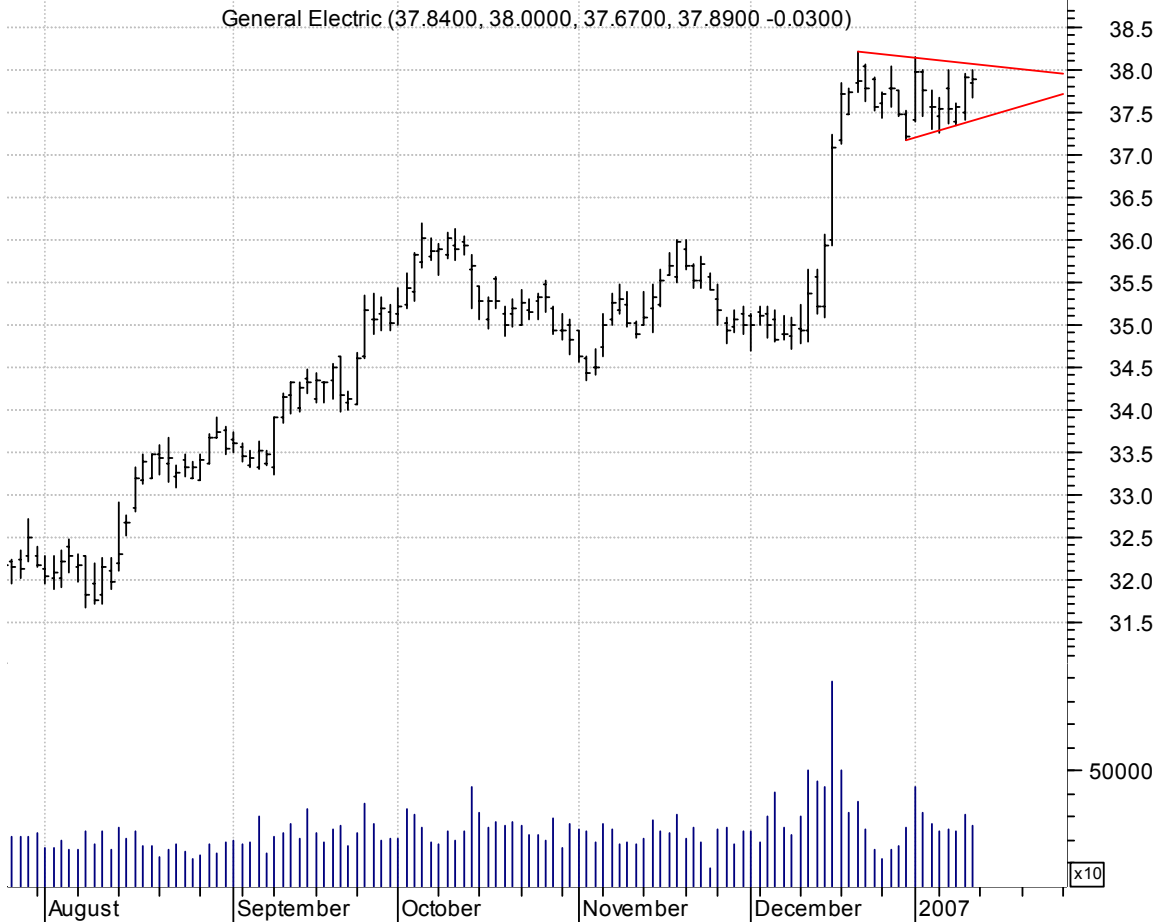
EXR asc. tri. / buy on upside bkout on increased volume



FEIC symm. tri. / buy on upside brkout on increased volume



GE symm. tri. preceded by 'pole-like' move / buy on upside brkout on increased volume



IBM symm. tri. / buy on upside brkout on increased volume



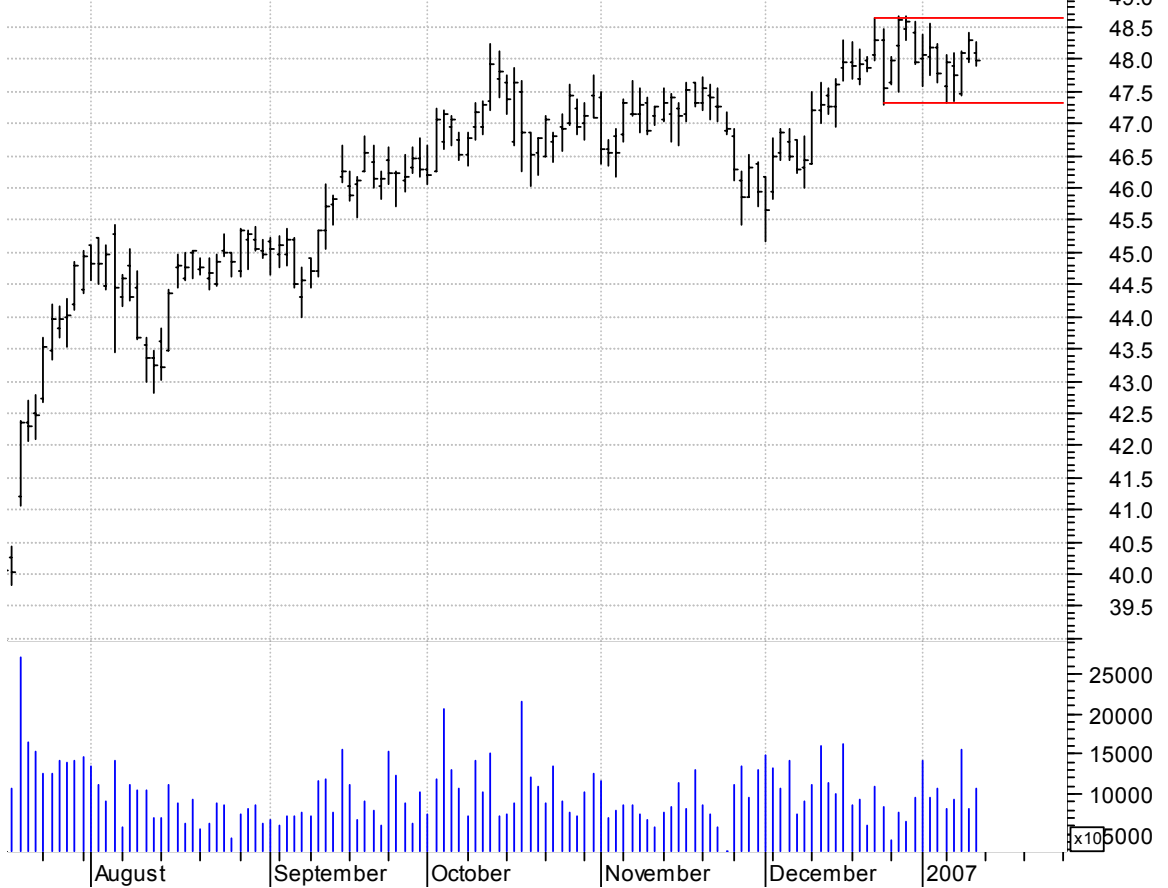
INTL sloppy symm. tri. / buy on upside brkout on increased volume

Inter-Tel Inc.:O (22.3700, 22.4400, 22.1400, 22.3000 -0.0200)



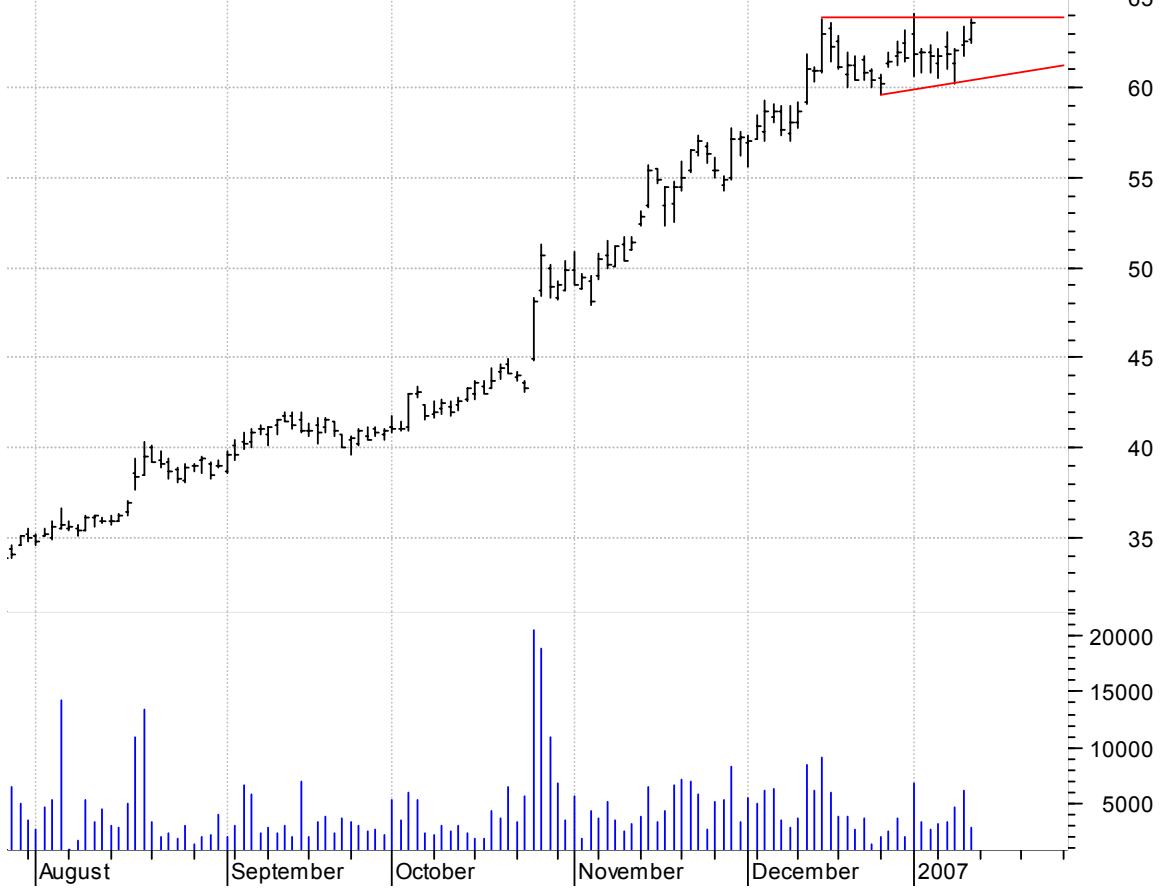
JPM rectangle / buy on upside brkout on increased volume

JP Morgan Chase (48.1000, 48.2600, 47.9000, 47.9900 -0.3200)



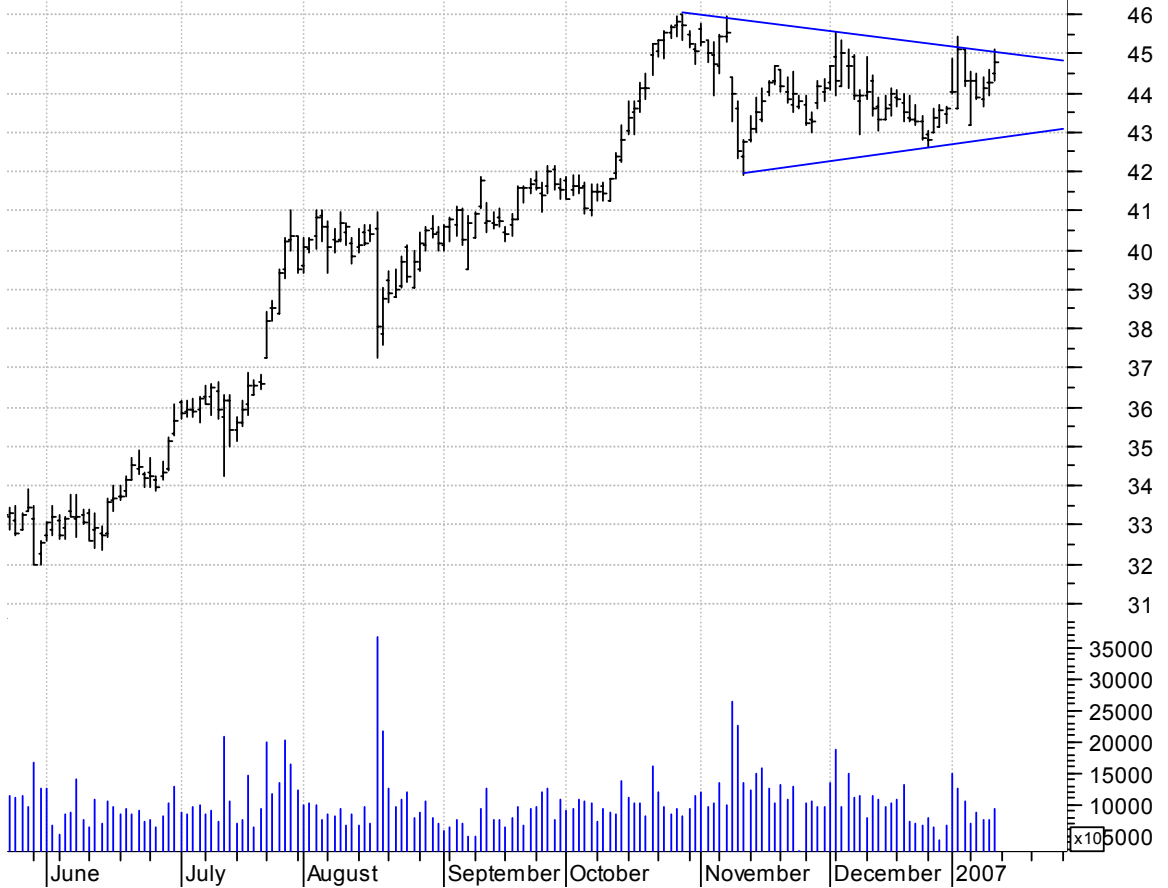
MICC asc. tri. / buy on upside brkout on increased volume

Millicom Inc:OTC (62.7100, 63.8000, 62.4500, 63.5900 +0.9700)



MRK symm. tri. / buy on upside brkout on increased volume

Merck & Co Inc:N (44.4800, 45.0900, 44.3200, 44.7900 +0.5300)



NICE sloppy asc. tri. / buy on upside brkout on increased volume

Nice-Systems Ltd (31.5400, 32.0000, 31.4500, 31.7800 -0.0500)



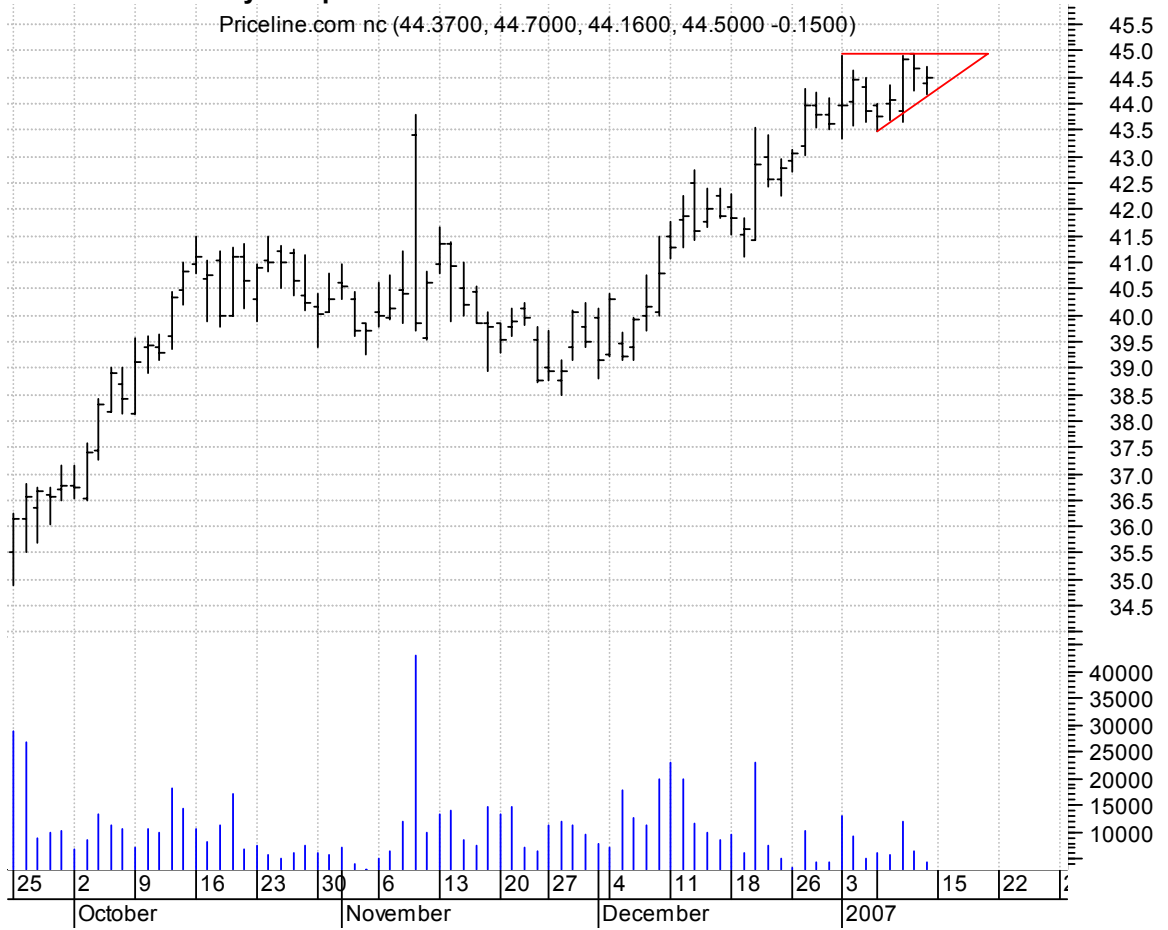
OMX falling wedge / buy on upside brkout on increased volume

OfficeMax Inc:NY (49.5100, 49.7200, 48.9100, 49.2000 -0.3000)



PCLN asc. tri. / buy on upside brkout on increased volume

Priceline.com nc (44.3700, 44.7000, 44.1600, 44.5000 -0.1500)



PTMK symm. tri. brkout / buy on upside brkout thru dotted red line on increased volume

PATHMARK STORES (11.2300, 11.4200, 11.2300, 11.3400 +0.1000)



SNUS symm. tri. / buy on upside brkout on increased volume

Sonus Pharmaceut (5.9300, 6.0300, 5.9300, 6.0000 +0.0600)



ZMH asc. tri. / buy on upside brkout on increased volume

ZIMMER HOLDINGS (78.4000, 79.5300, 78.4000, 78.6800 +0.1800)



VIP bull flag / buy on upside breakout on increased volume



chartpatterns.com
Chart Pattern Analysis for Timing the Markets

KMatras@aol.com