

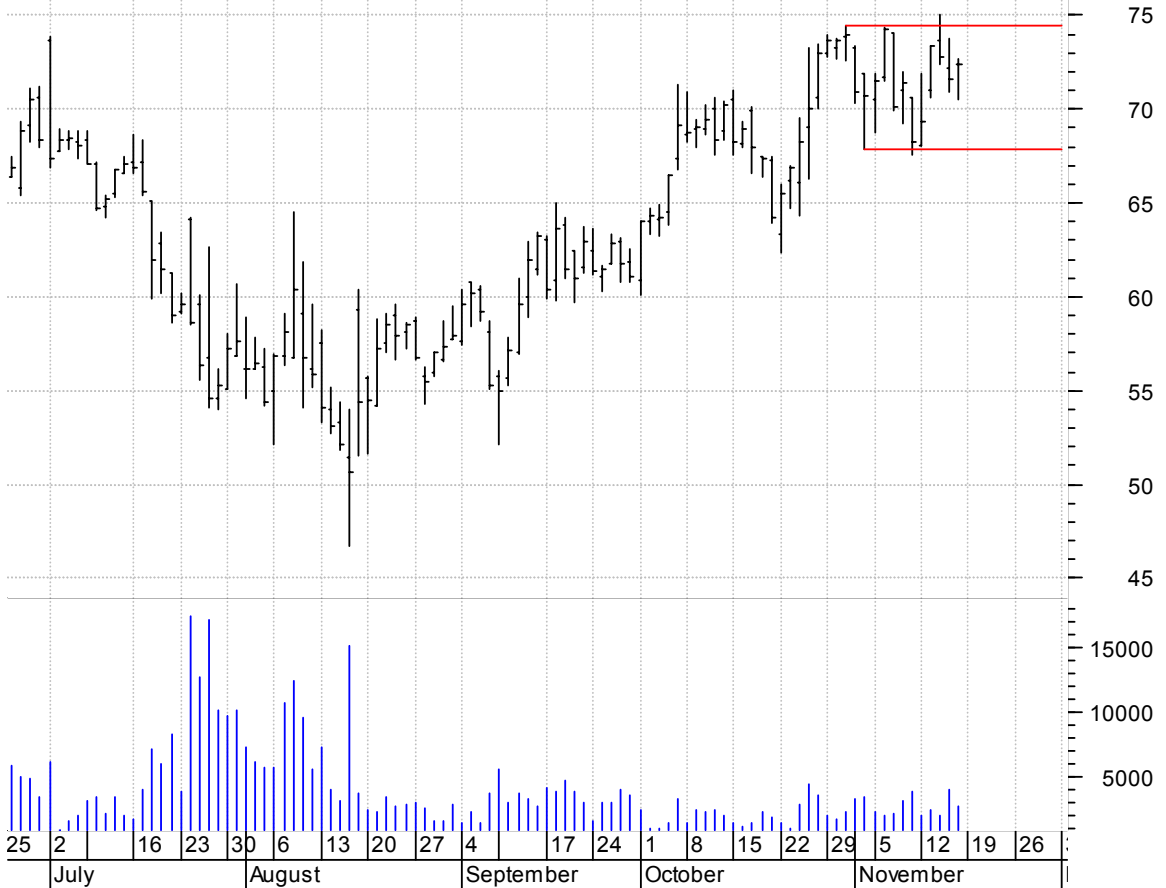
**ANSR asc. tri. preceded by 'pole-like' move / buy on upside brkout on increased volume**

Answerthink Inc: (4.2000, 4.2800, 3.9800, 4.2500 +0.0400)



**GHL rectangle / buy on upside brkout on increased volume**

GREENHILL & CO I (72.3500, 72.6700, 70.5000, 72.3900 +0.7600)



**HMSY symm. tri. / buy on upside brkout on increased volume**

HMS Management:O (30.4800, 30.4800, 29.5300, 30.4700 -0.0800)



**KCI symm. tri. (discounting spike day) / buy on upside brkout on increased volume**

KINETIC CONCEPTS (59.9800, 60.2800, 58.9600, 59.6700 -0.2300)



**LGCY symm. tri. / buy on upside brkout on increased volume**

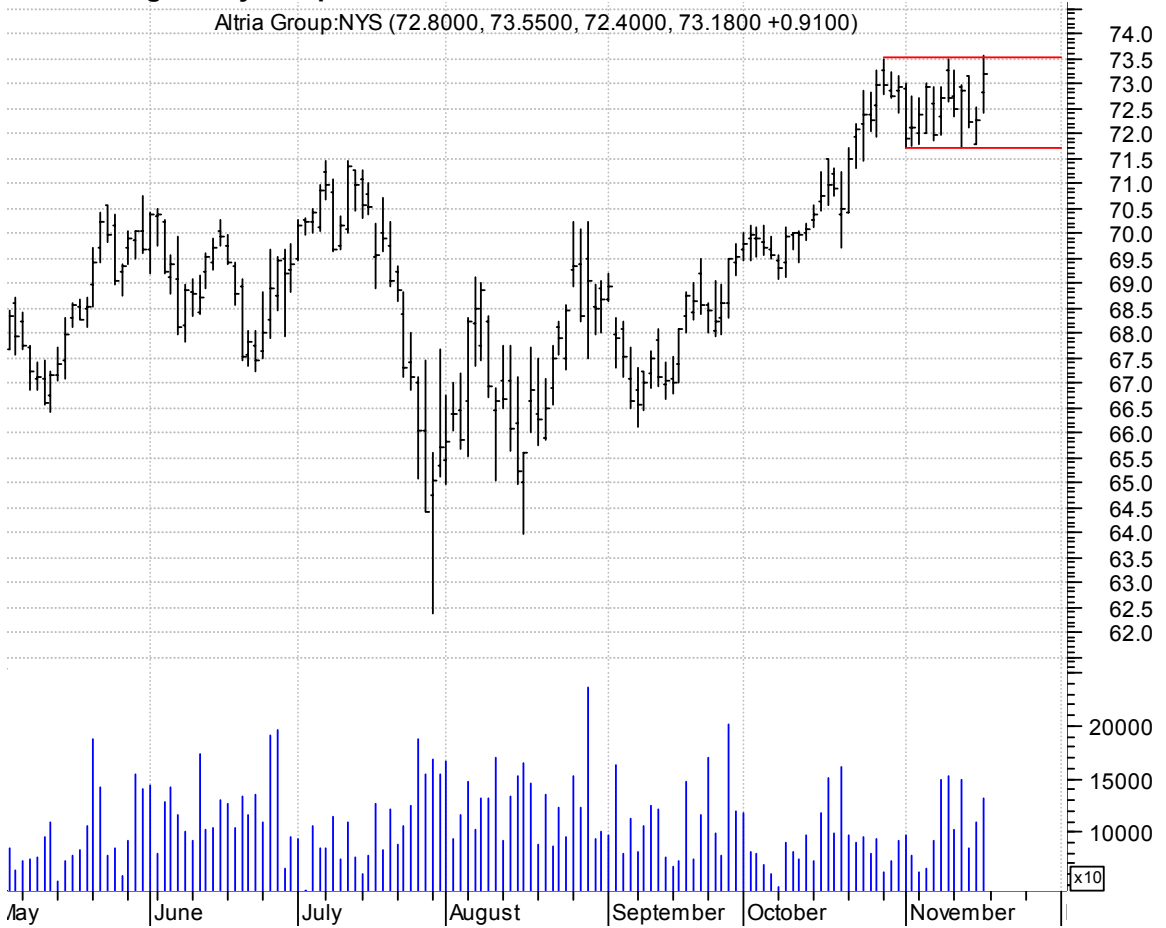


**MCRS bull flag / buy on upside brkout on increased volume**



**MO rectangle / buy on upside breakout on increased volume**

Altria Group:NYS (72.8000, 73.5500, 72.4000, 73.1800 +0.9100)



**MTRX asc. tri. preceded by 'pole-like' move / buy on upside breakout on increased volume**

Matrix Service C (27.6500, 28.1700, 26.6900, 27.9200 +0.4300)



**OTEX symm. tri. / buy on upside brkout on increased volume**



**SWIM symm. tri. / buy on upside brkout on increased volume**



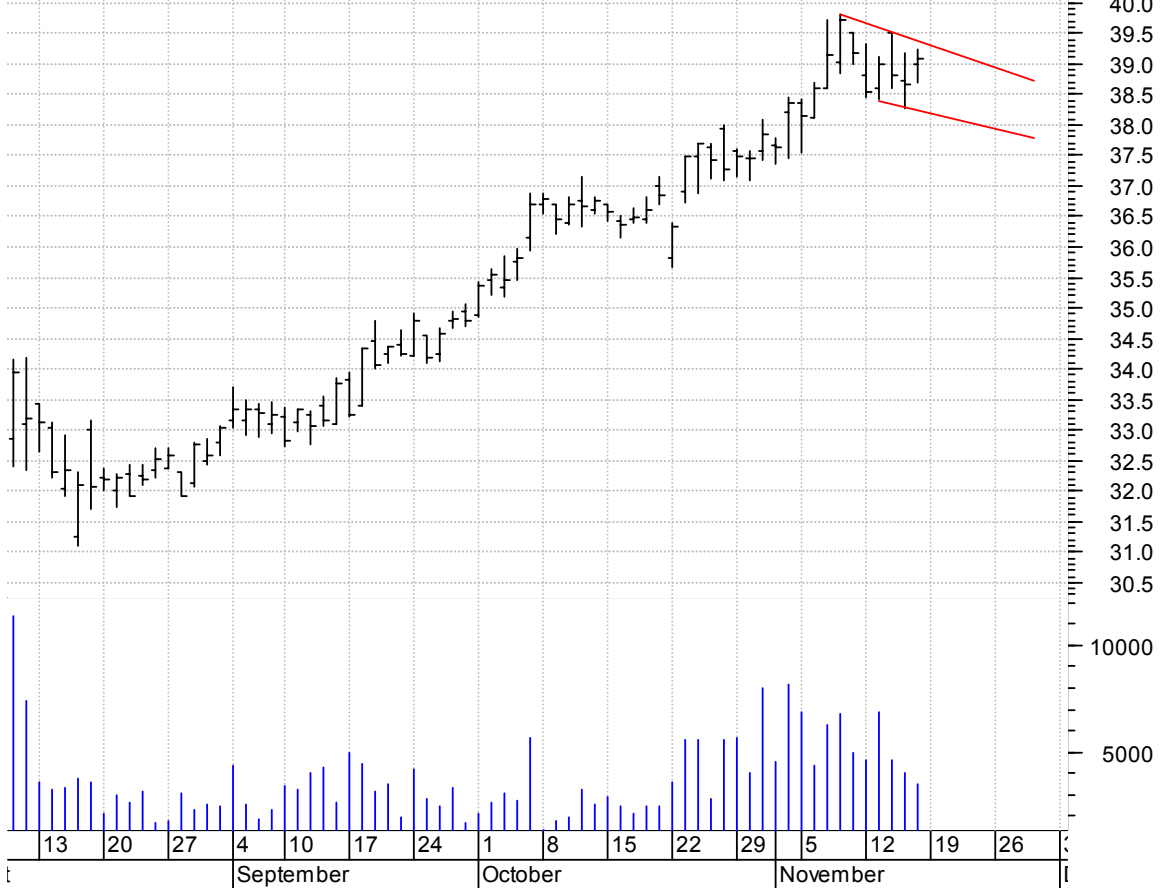
**SXE falling wedge preceded by 'pole-like' move / buy on upside breakout on increased volume**

Stanley Associat (29.8200, 31.4900, 29.4000, 31.3700 +1.6100)



**THI falling wedge / buy on upside breakout on increased volume**

TIM HORTONS INC: (39.0000, 39.2300, 38.6800, 39.0700 +0.4200)



**chartpatterns.com**  
Chart Pattern Analysis for Timing the Markets

[KMatras@aol.com](mailto:KMatras@aol.com)