

**AGR bullish flagging / buy on upside breakout on increased volume**

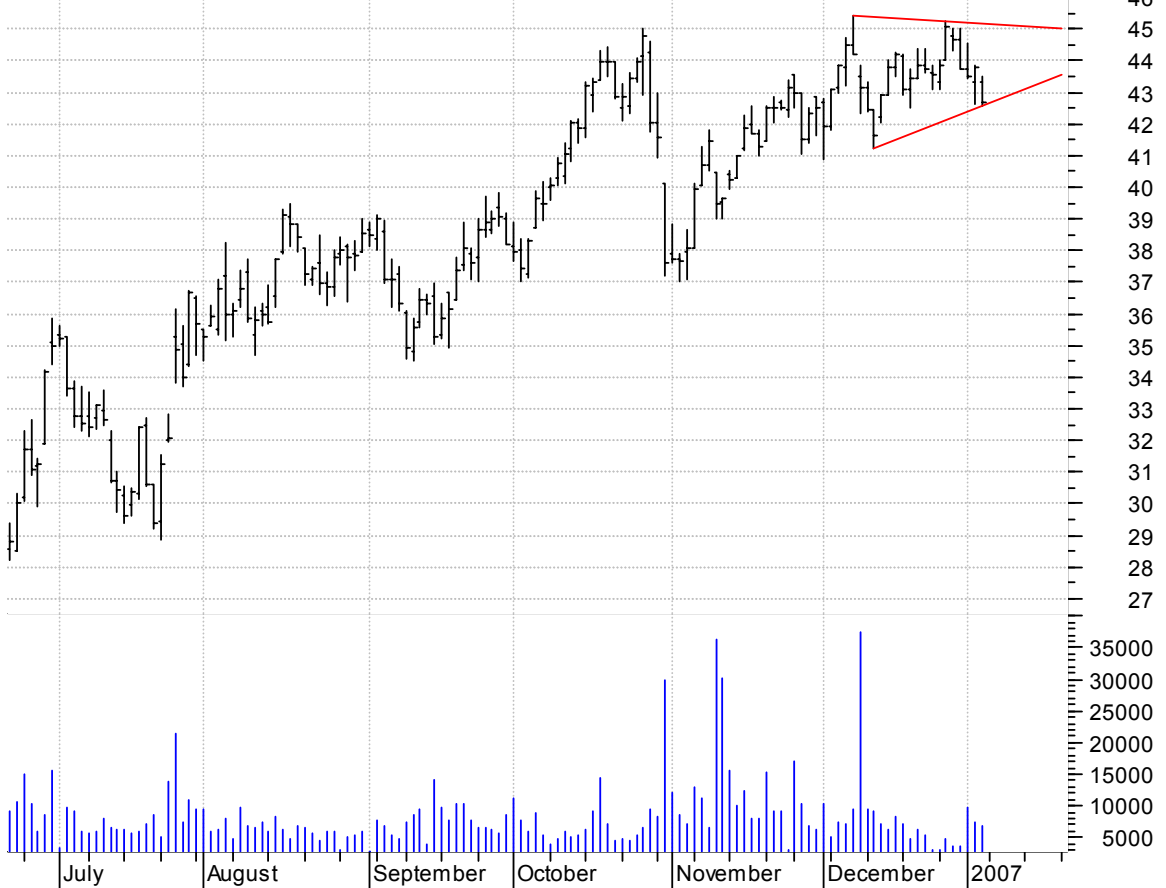


**ANDW symm. tri. / buy on upside breakout on increased volume**



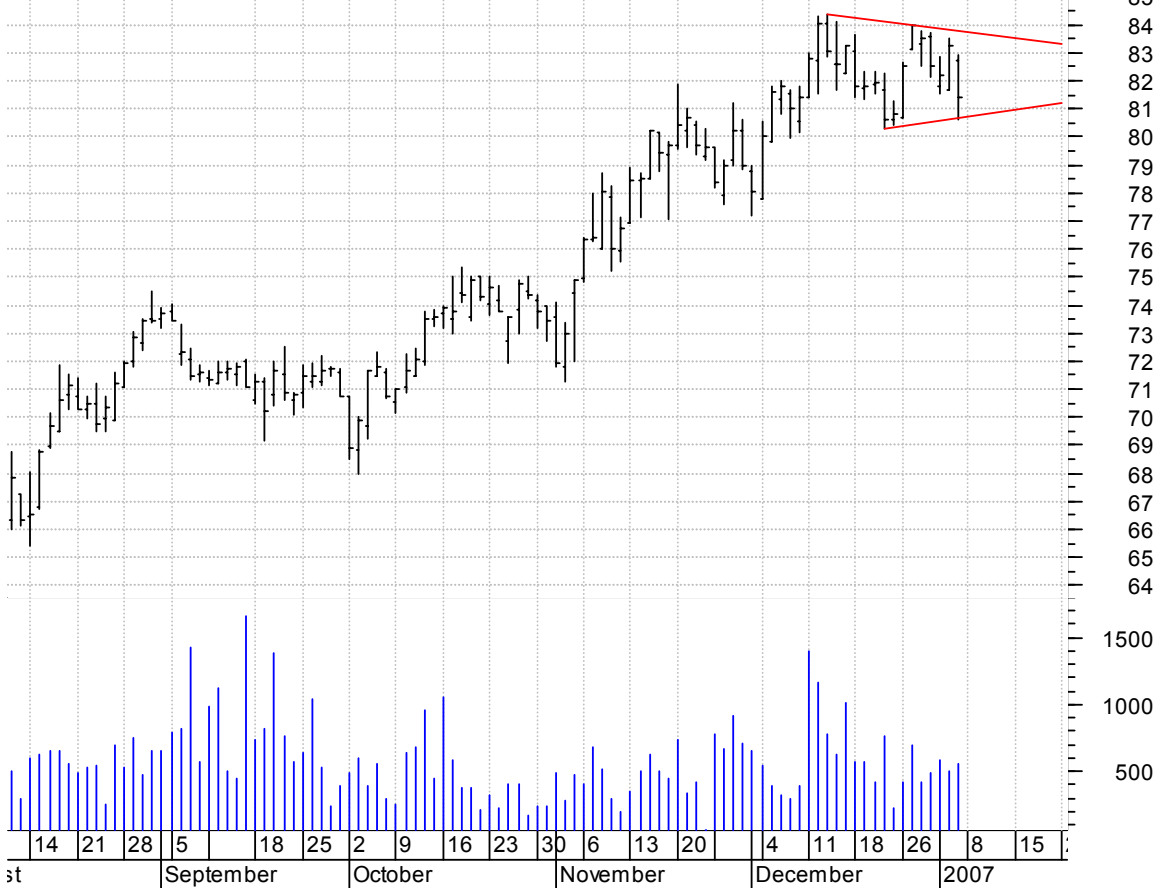
**BGC symm. tri. / buy on upside bkout on increased volume**

General Cable Co (43.3000, 43.4800, 42.5700, 42.6700 -1.1100)



**BIO symm. tri. / buy on upside brkout on increased volume**

Bio-Rad Laborato (82.7200, 82.9500, 80.6500, 81.4100 -1.8400)



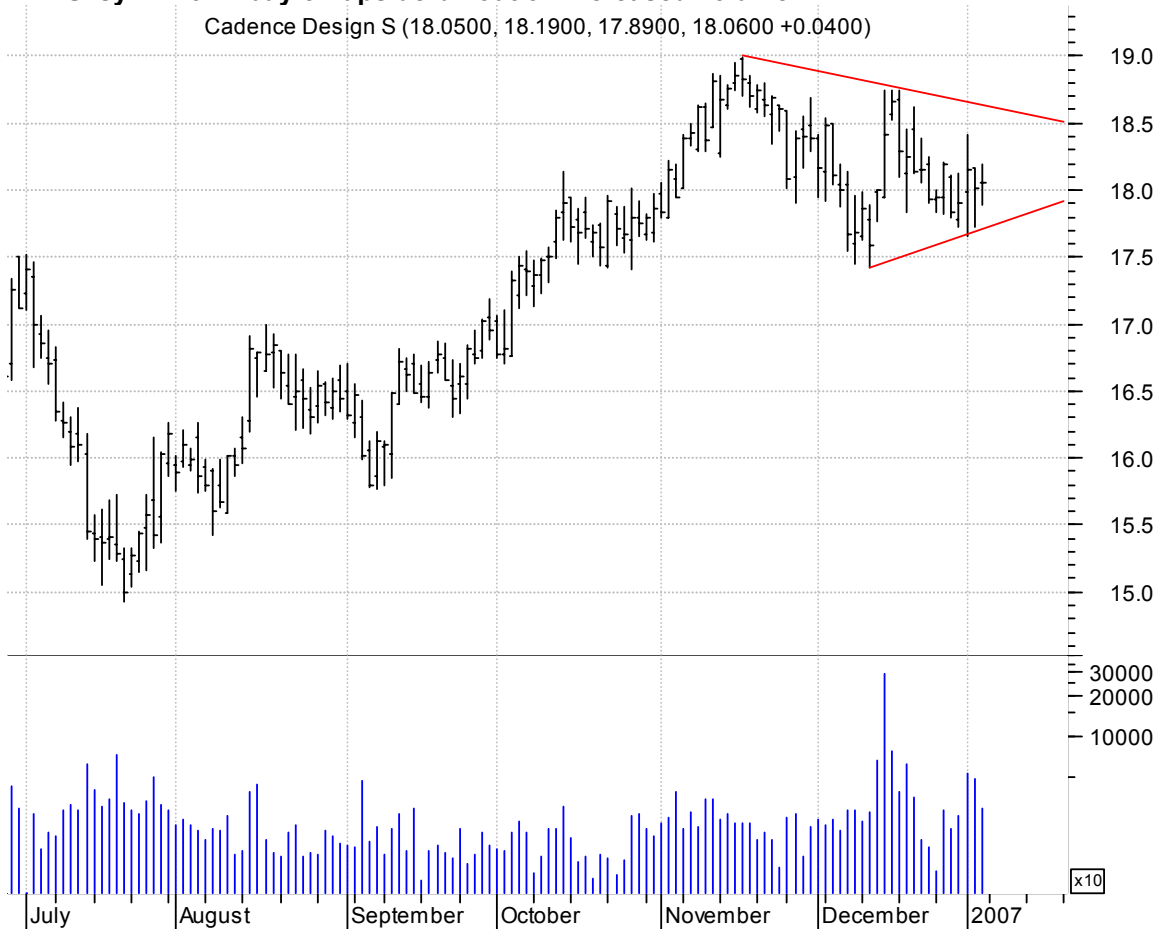
**CCK symm. tri. / buy on upside brkout on increased volume**

Crown Holdings:N (21.1400, 21.2100, 21.0000, 21.1400 -0.0400)



**CDNS symm. tri. / buy on upside brkout on increased volume**

Cadence Design S (18.0500, 18.1900, 17.8900, 18.0600 +0.0400)



**GAIA symm. tri. / buy on upside breakout on increased volume**

Gaiam Inc Cl A:O (13.6400, 13.7300, 12.9000, 13.1100 -0.6200)



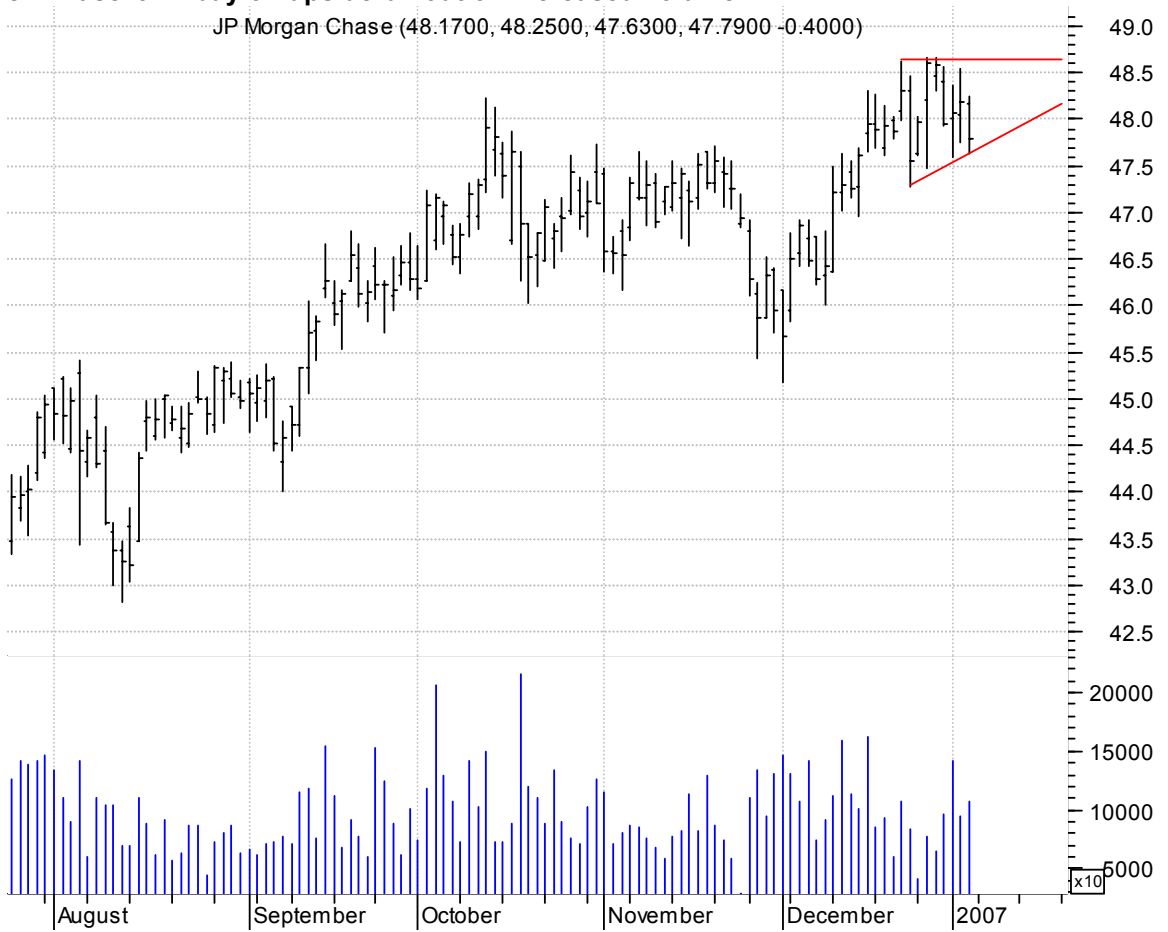
**INFY symm. tri. / buy on upside breakout thru dotted red line on increased volume**

Infosys Tech Ltd (55.0500, 55.5000, 54.6400, 55.1400 -0.2600)



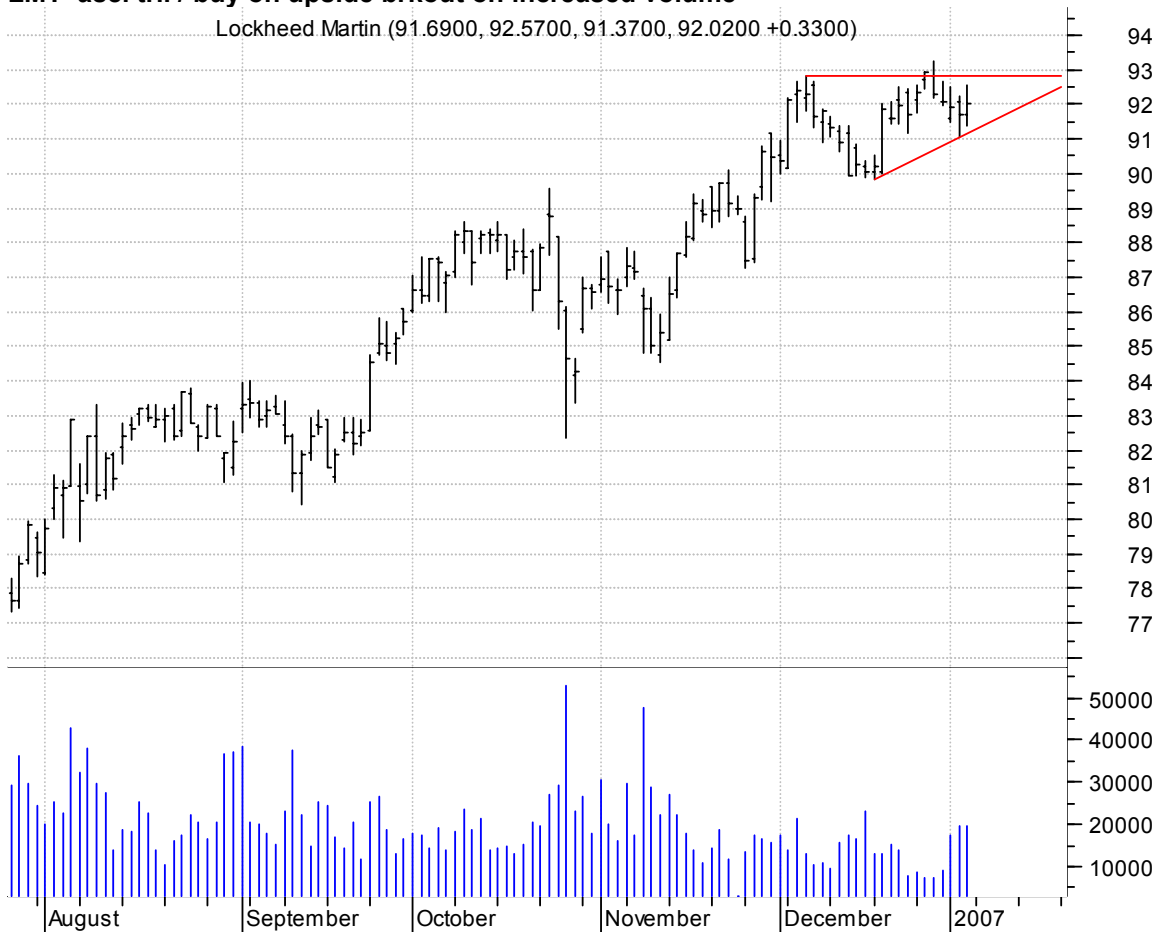
**JPM asc. tri. / buy on upside breakout on increased volume**

JP Morgan Chase (48.1700, 48.2500, 47.6300, 47.7900 -0.4000)



**LMT asc. tri. / buy on upside breakout on increased volume**

Lockheed Martin (91.6900, 92.5700, 91.3700, 92.0200 +0.3300)



**MICC asc. tri. / buy on upside breakout on increased volume**

Millicom Inc:OTC (62.0100, 62.3300, 60.8700, 61.7100 -0.2100)

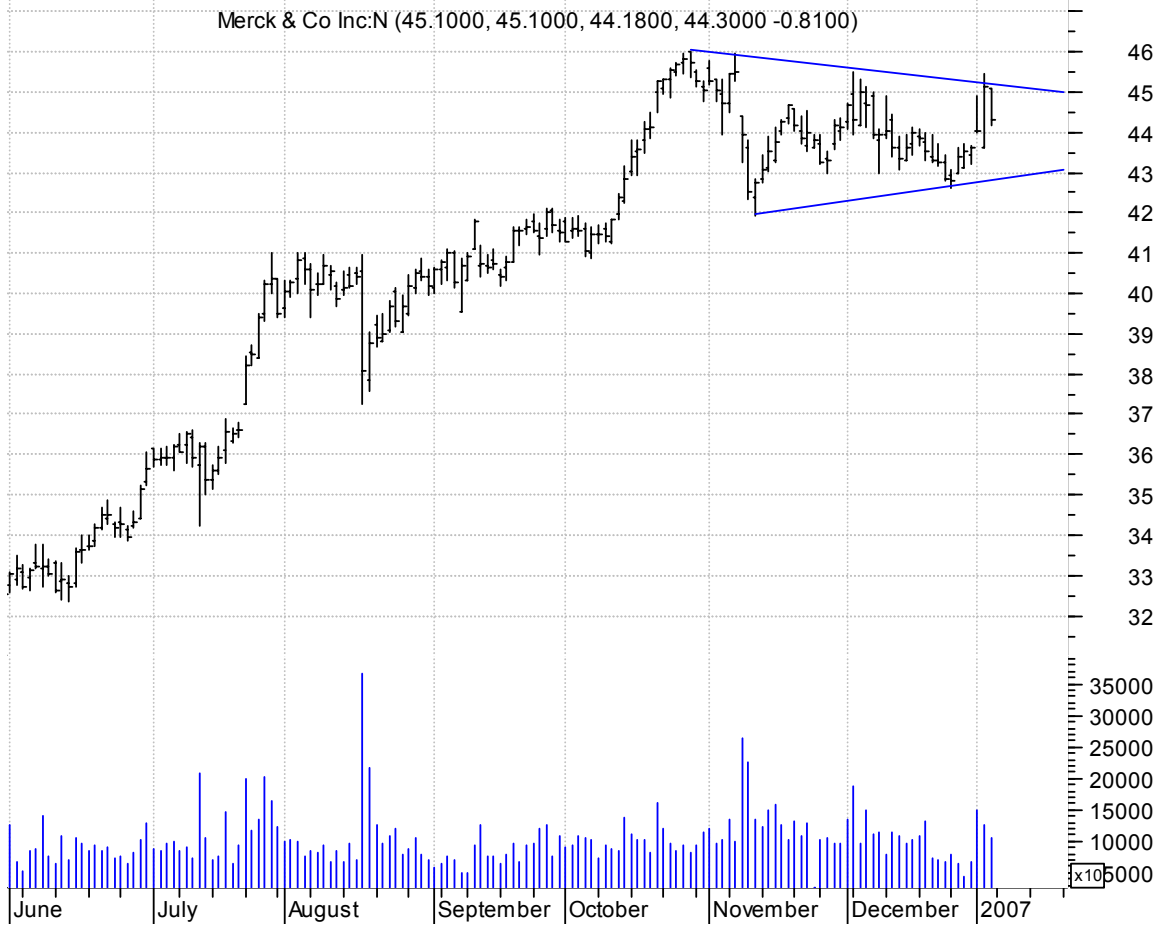


**MNST symm. tri. / buy on upside breakout on increased volume**

Monster Worldwid (47.4400, 47.4400, 46.5800, 46.8100 -0.3000)



**MRK symm. tri. / buy on upside breakout on increased volume**



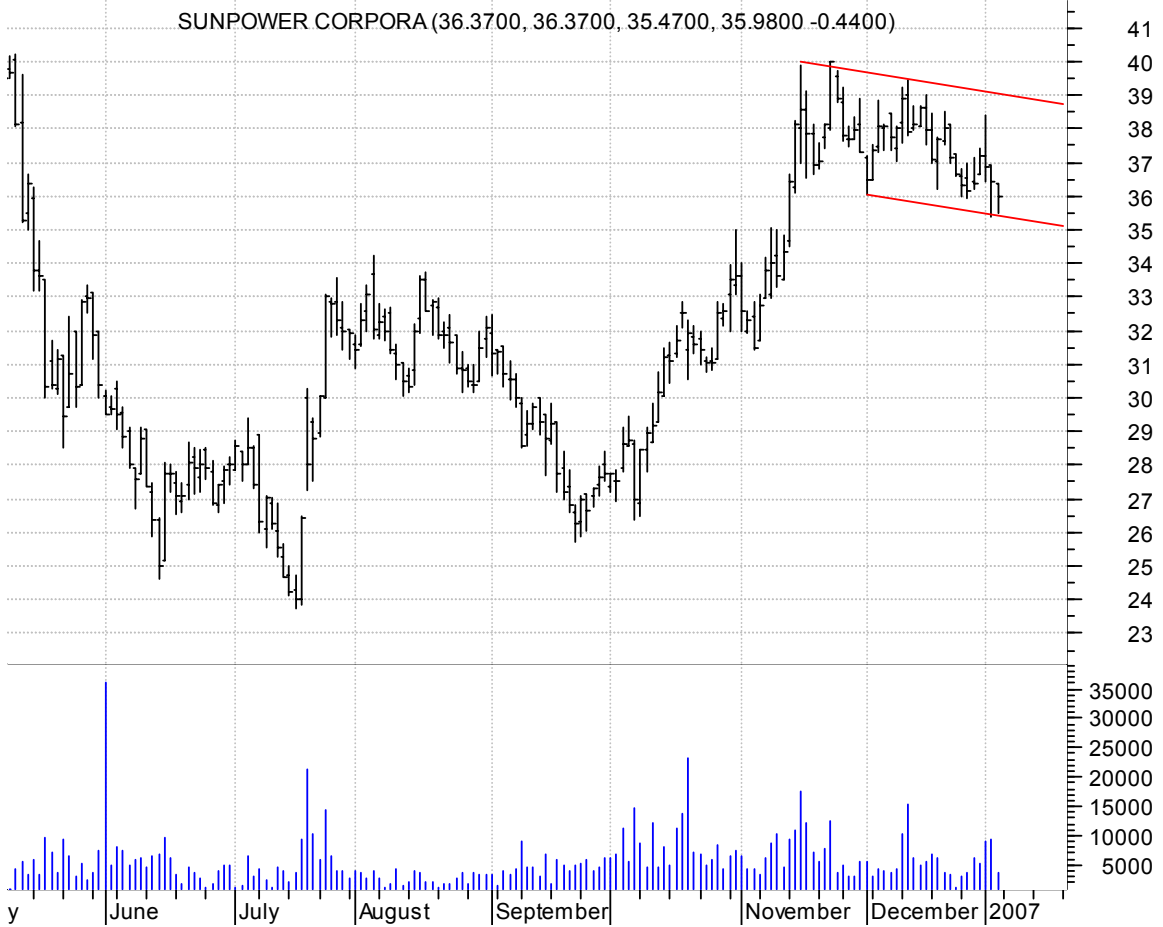
**ONNN bull pennant / buy on upside breakout on increased volume**



**PTMK symm. tri. / buy on upside breakout on increased volume**



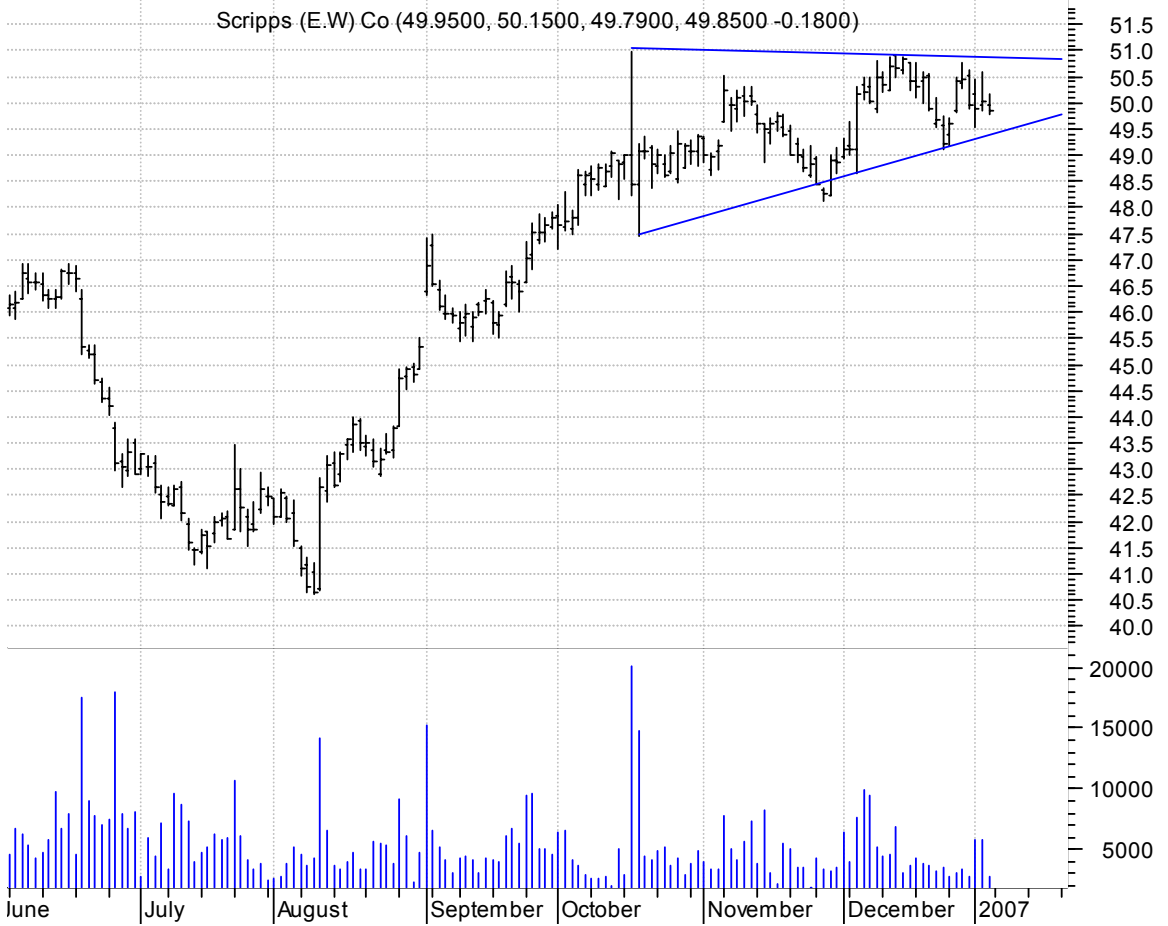
**SPWR bullish flagging / buy on upside breakout on increased volume**





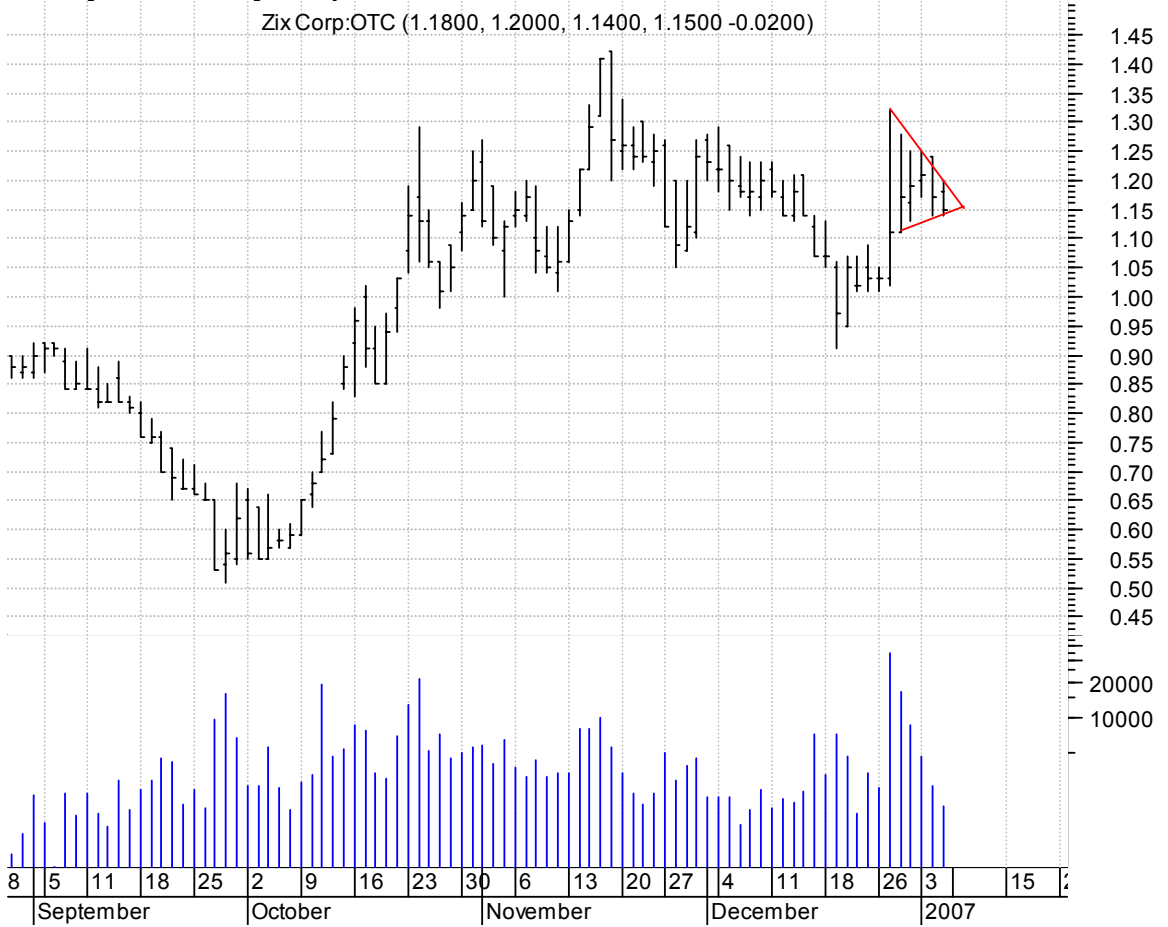
**SSP symm. tri. / buy on upside breakout on increased volume**

Scripps (E.W) Co (49.9500, 50.1500, 49.7900, 49.8500 -0.1800)



**ZIXI symm. tri. / buy on upside breakout on increased volume**

Zix Corp:OTC (1.1800, 1.2000, 1.1400, 1.1500 -0.0200)



**ZQK symm. tri. preceded by 'pole-like' move / buy on upside brkout on increased volume**

Quicksilver Inc: (15.6000, 15.6000, 15.2000, 15.3600 -0.2400)



**chartpatterns.com**  
Chart Pattern Analysis for Timing the Markets

[KMatras@aol.com](mailto:KMatras@aol.com)