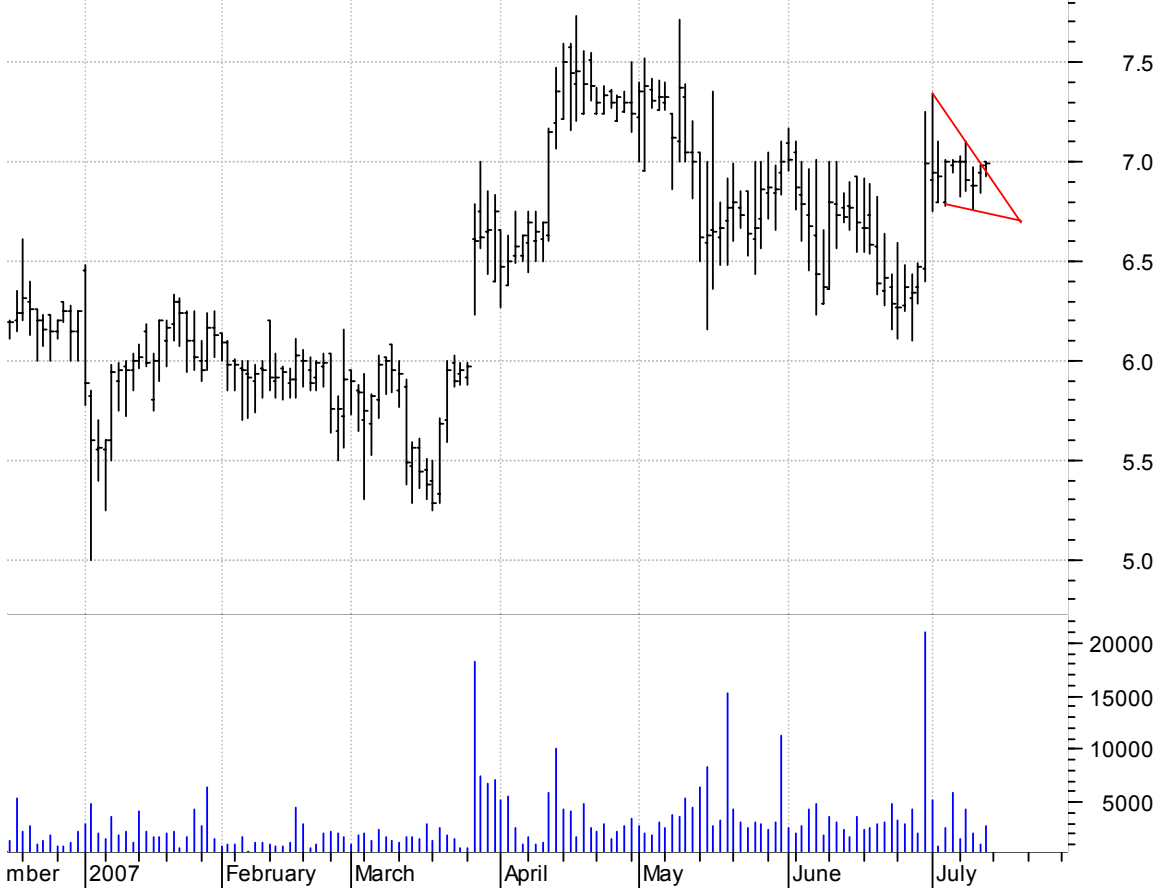


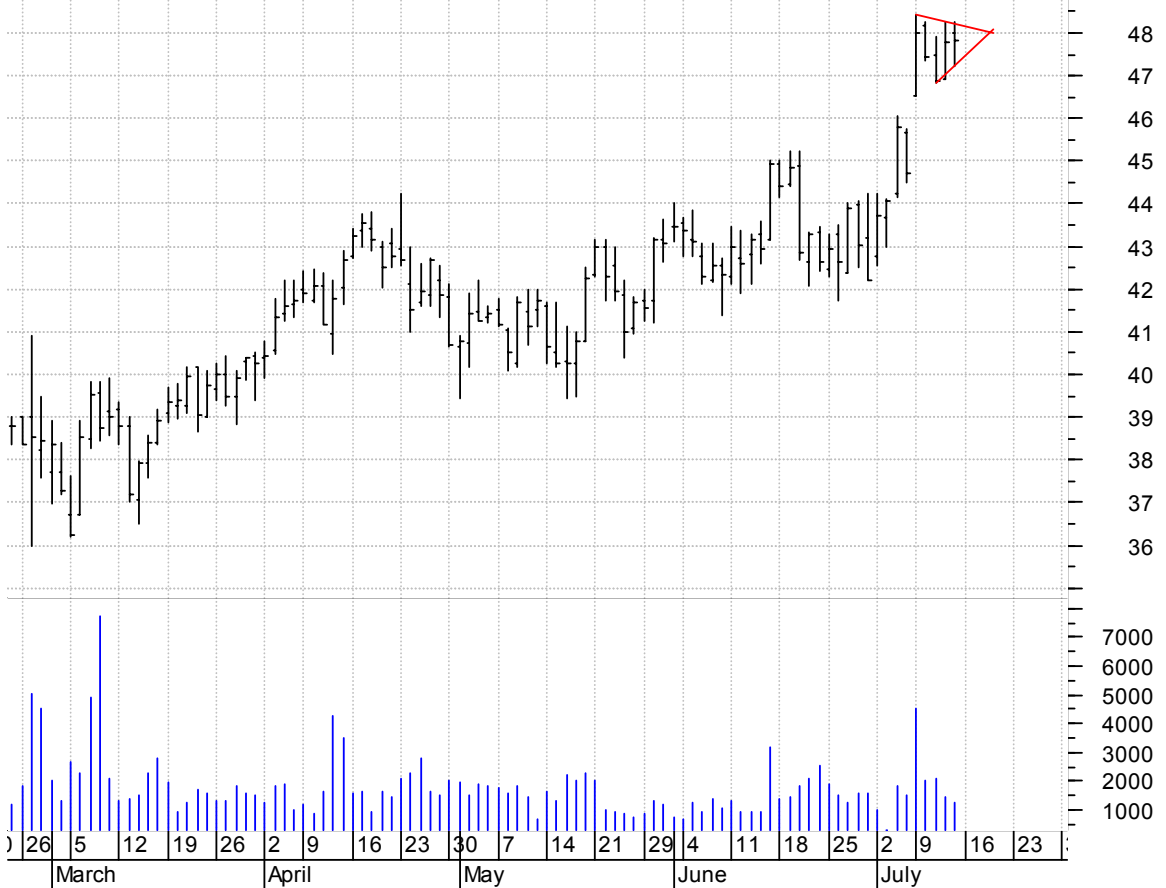
**AKRX falling wedge / buy on upside brkout on increased volume**

AKORN INC:OTC (7.0000, 7.0000, 6.9300, 6.9900 +0.0100)



**ASTE bull pennant / buy on upside brkout on increased volume**

Astec Ind Inc:OT (48.0000, 48.2700, 47.2200, 47.8300 +0.0300)



**ASTSF asc. tri. / buy on upside brkout on increased volume**

ASE Test Inc:OTC (14.8200, 14.9300, 14.2800, 14.6800 -0.1600)



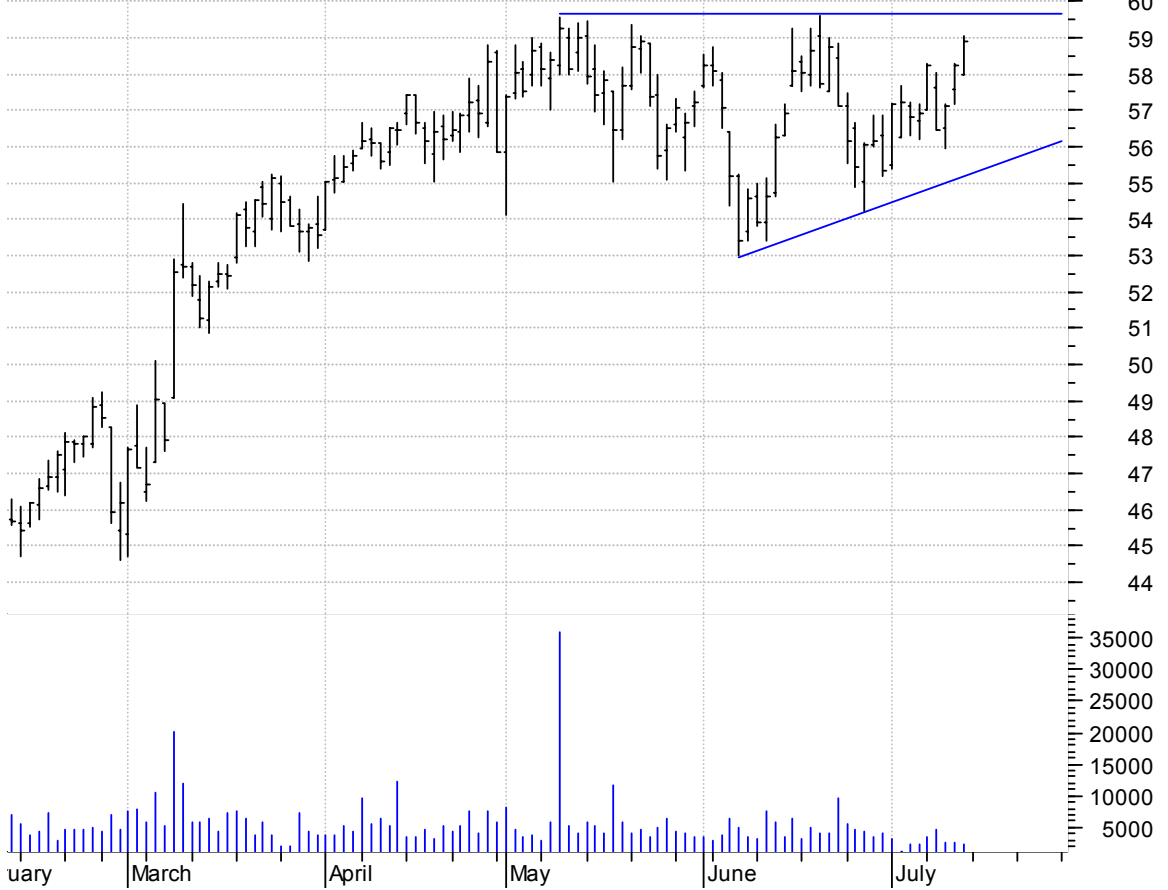
**AXTI bull pennant / buy on upside brkout on increased volume**

AXT Inc:OTC (4.6900, 4.7400, 4.6300, 4.7400 +0.0200)



**BDC asc. tri. / buy on upside brkout on increased volume**

Belden CDT:NYSE (58.0000, 59.0700, 57.9800, 58.8900 +0.6700)



**BFB symm. tri. / buy on upside brkout on increased volume**

Brown-Foreman CI (72.2700, 72.7200, 71.7300, 72.5500 +0.2800)



**CAMH symm. tri. / buy on upside breakout on increased volume**

Cambridge Heart (4.4000, 4.4000, 4.3000, 4.3300 -0.0700)

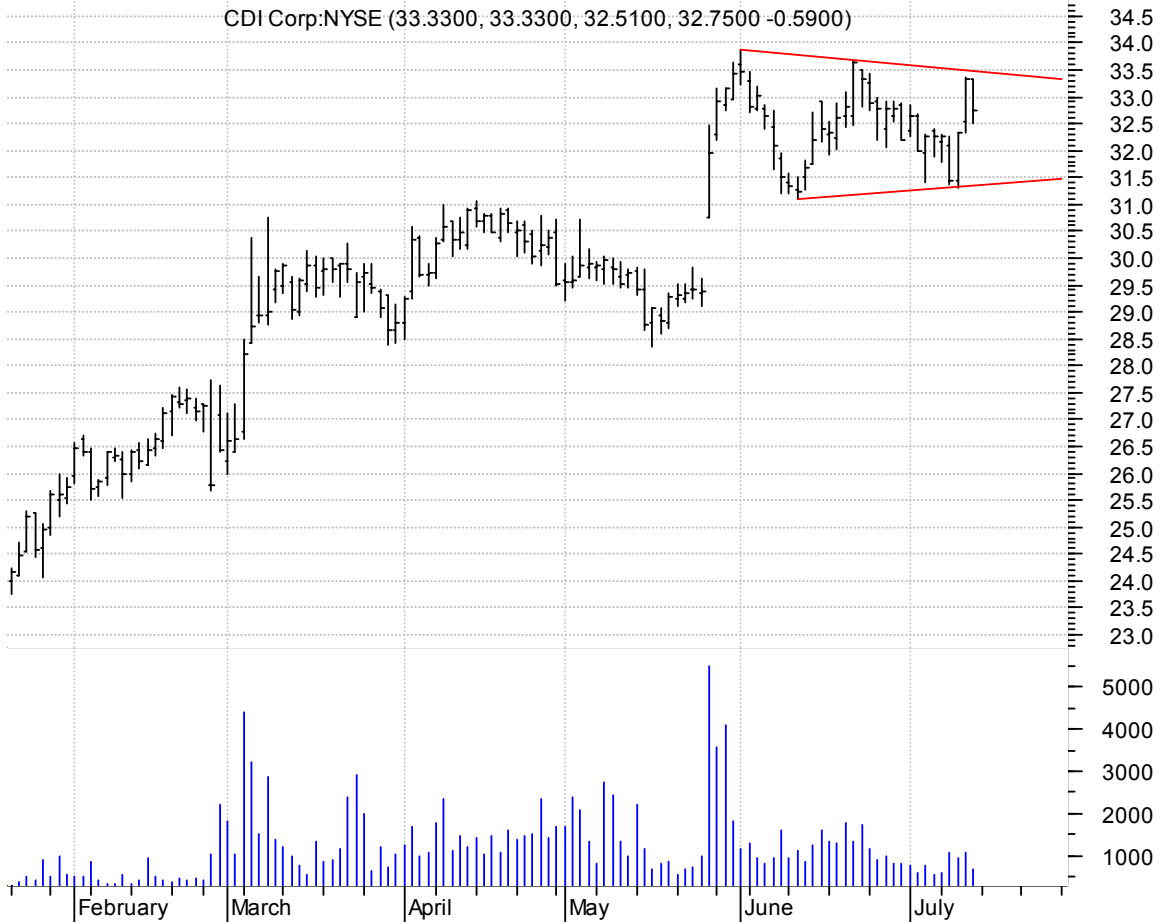


**CBEY symm. tri. / buy on upside breakout on increased volume**

Cbeyond Inc:OTC (39.4900, 40.0000, 38.7000, 39.7500 +0.2500)



**CDI symm. tri. / buy on upside breakout on increased volume**

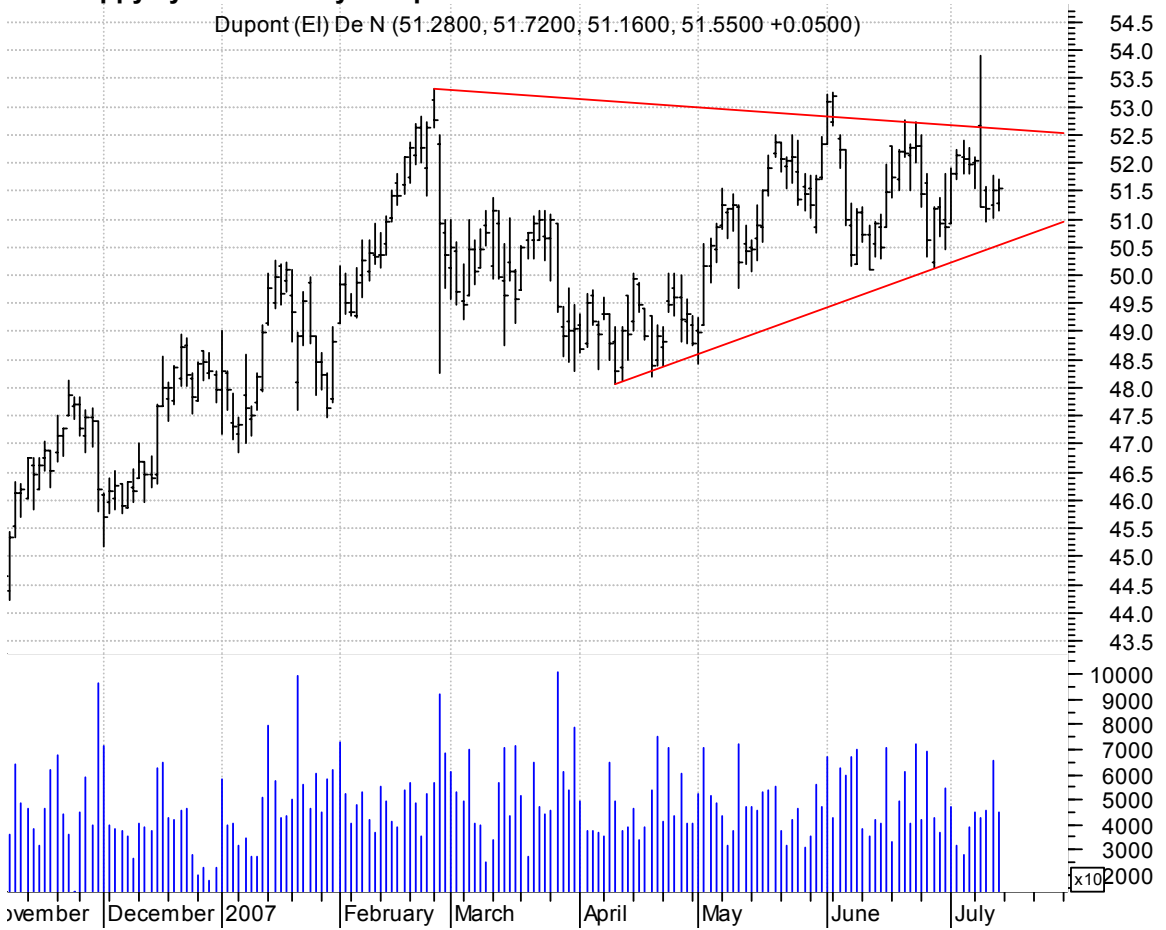


**CROX bull flag / buy on upside breakout on increased volume**



**DD sloppy symm. tri. / buy on upside breakout on increased volume**

Dupont (E) De N (51.2800, 51.7200, 51.1600, 51.5500 +0.0500)



**DGII falling wedge / buy on upside breakout on increased volume**

Digi Intl Inc:OT (15.0000, 15.1900, 14.7400, 14.7900 -0.2700)



**DKS symm. tri. / buy on upside brkout on increased volume**

DICK'S SPORTING (58.4000, 58.9000, 57.9000, 58.6900 +0.1100)



**DV symm. tri. / buy on upside brkout on increased volume**

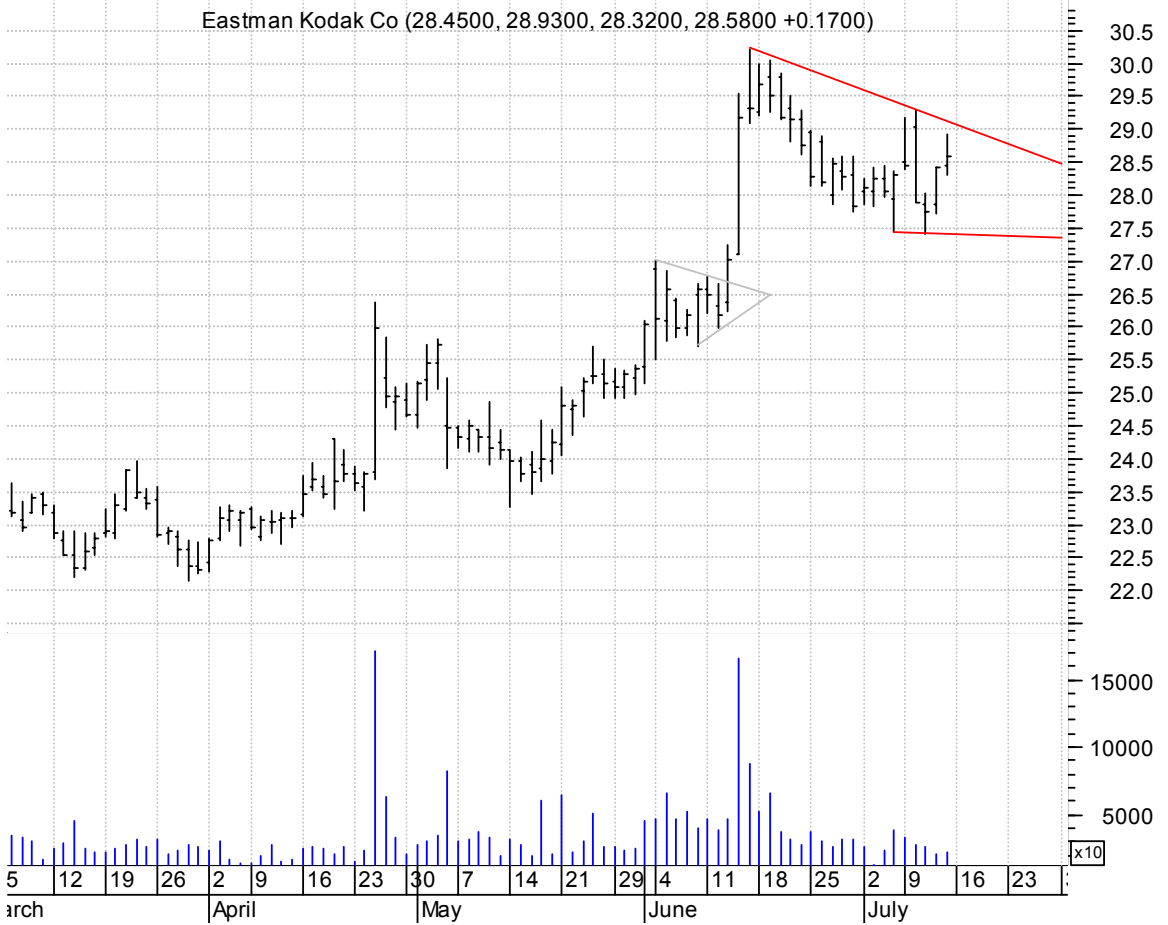
De Vry Inc:NYSE (34.9000, 35.1500, 34.7000, 35.0400 -0.0100)



**ECOL symm. tri. / buy on upside brkout on increased volume**



**EK falling wedge / buy on upside brkout on increased volume**





**ELGX symm. tri. / buy on upside brkout on increased volume**

Endologix Inc:OT (4.1400, 4.3000, 4.1400, 4.2500 +0.0900)



**ELON bull pennant / buy on upside brkout on increased volume**

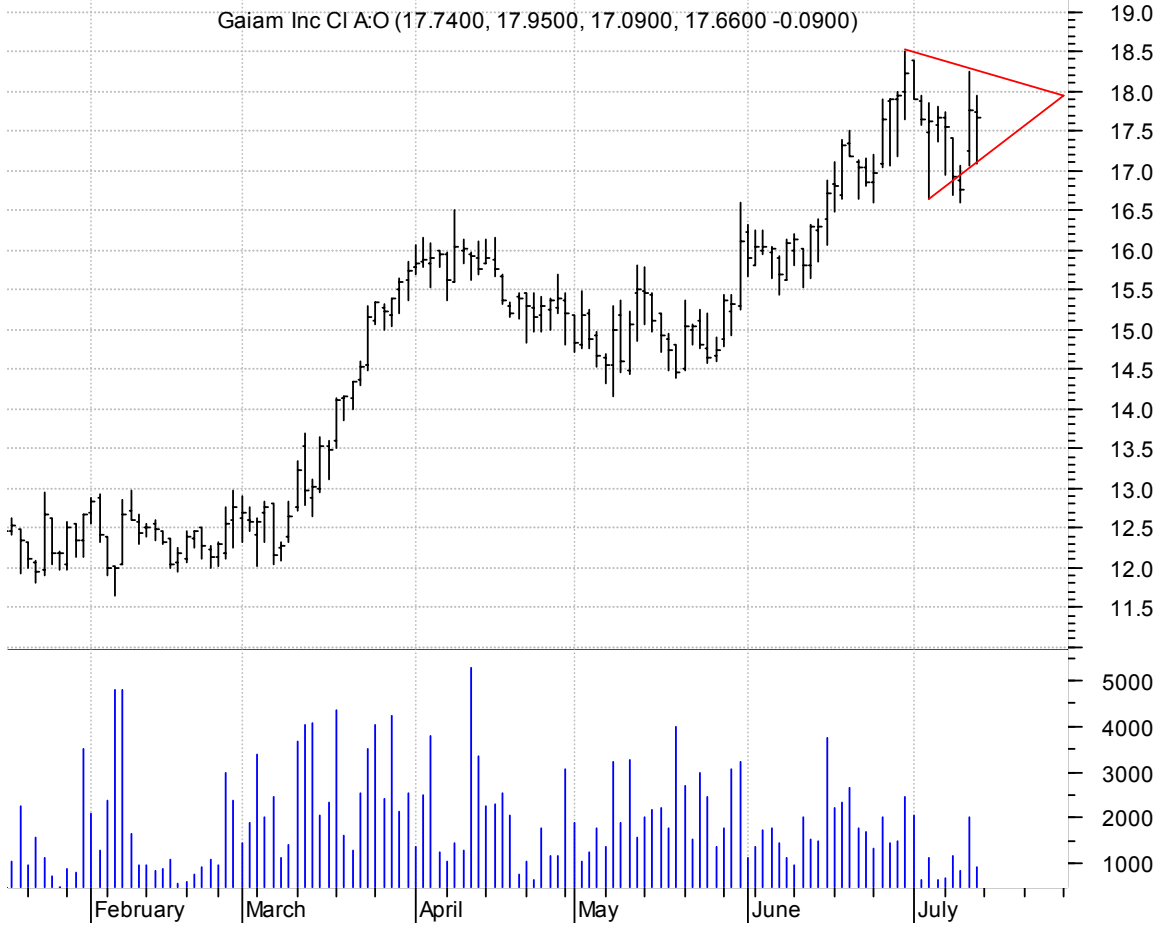
Echelon Corp:OTC (19.8800, 19.9800, 19.3300, 19.5500 -0.4500)



**EPG falling wedge preceded by 'pole-like' move / buy on upside brkout on larger than normal volume**

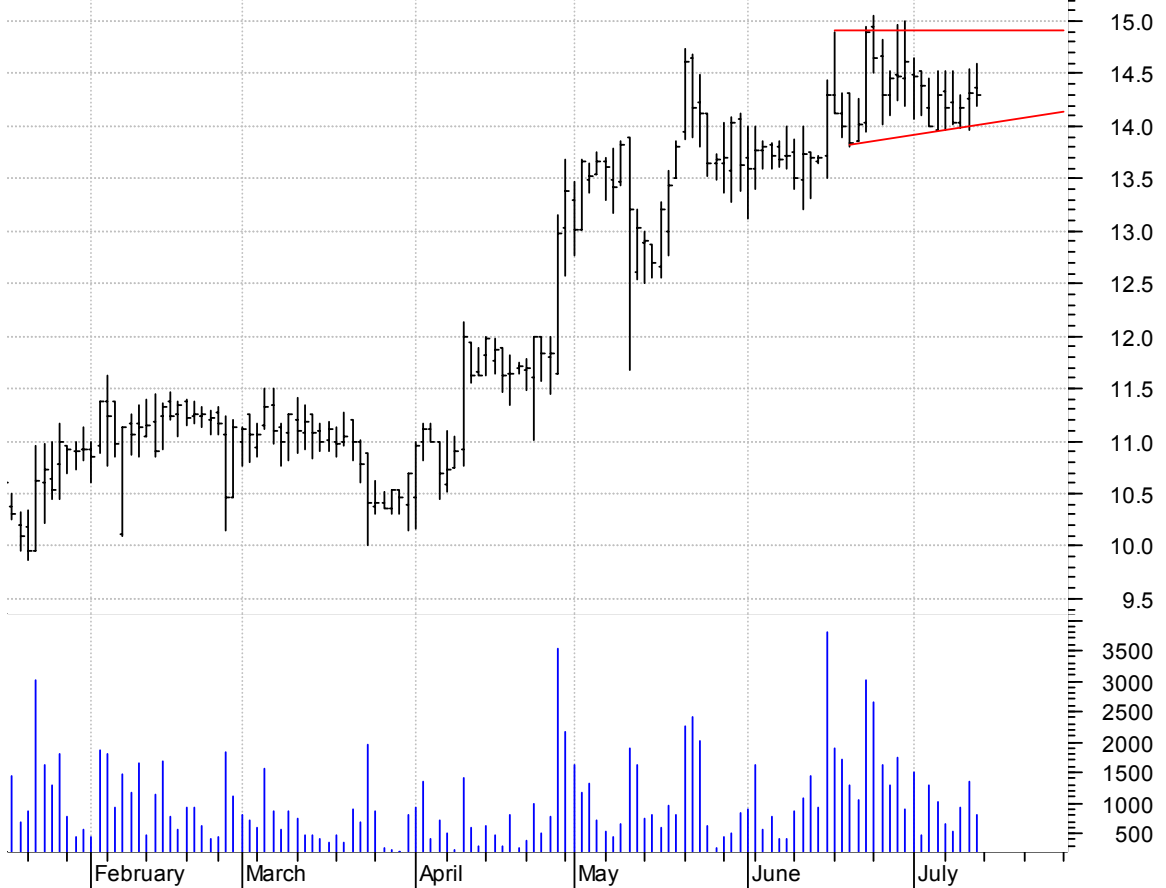


**GAIA sloppy symm. tri. / buy on upside brkout on increased volume**



**GCOM sloppy asc. tri. / buy on upside brkout on increased volume**

Globecomm System (14.3600, 14.6000, 14.1900, 14.2900 -0.0200)

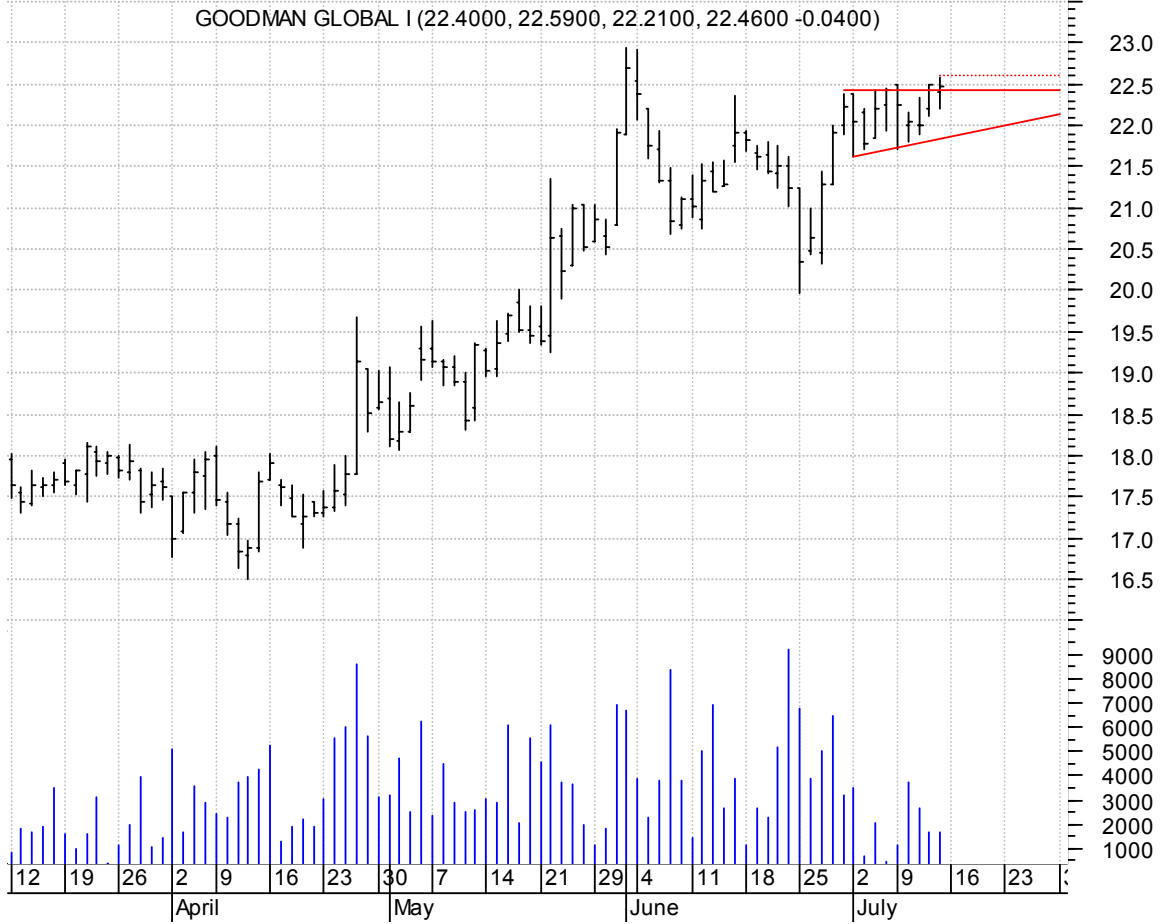


**GEL rectangle preceded by 'pole-like' move / buy on upside brkout on increased volume**

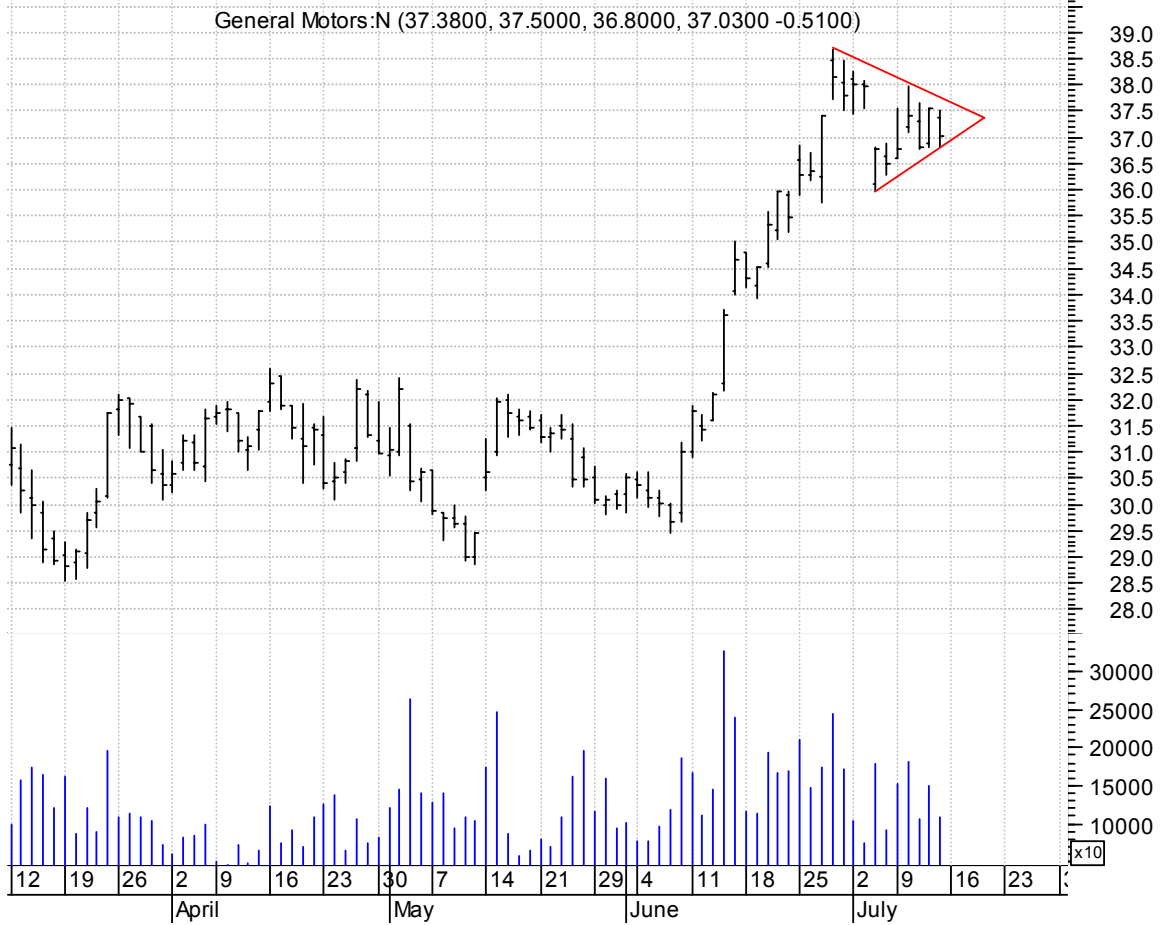
Genesis Energy L (37.2000, 37.2000, 36.5000, 36.9100 -0.0900)



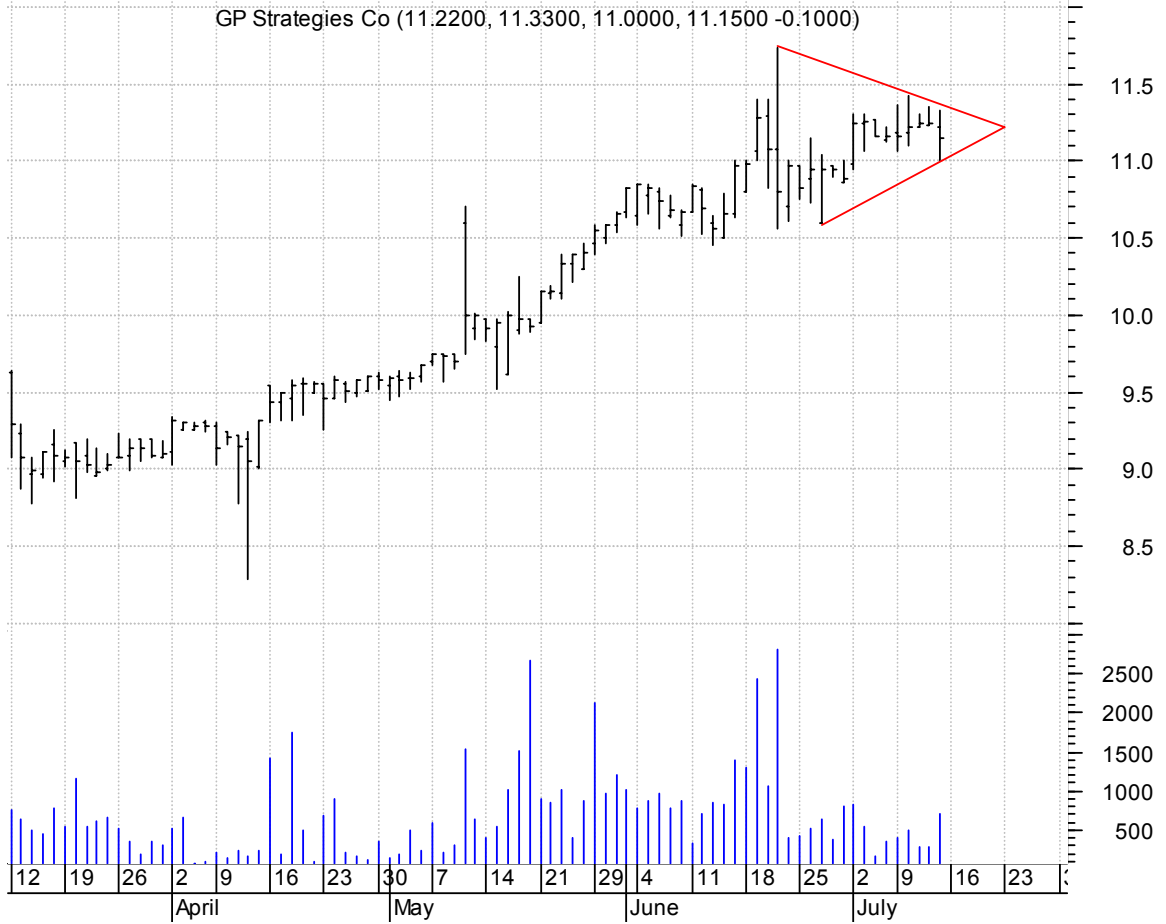
**GGL sloppy asc. tri. breakout / buy on upside continuation thru dotted red line on increased volume**



**GM symm tri. preceded by 'pole-like' move / buy on upside breakout on increased volume**



### GPX symm. tri. / buy on upside breakout on increased volume



### GSOL bull flag / buy on upside breakout on increased volume



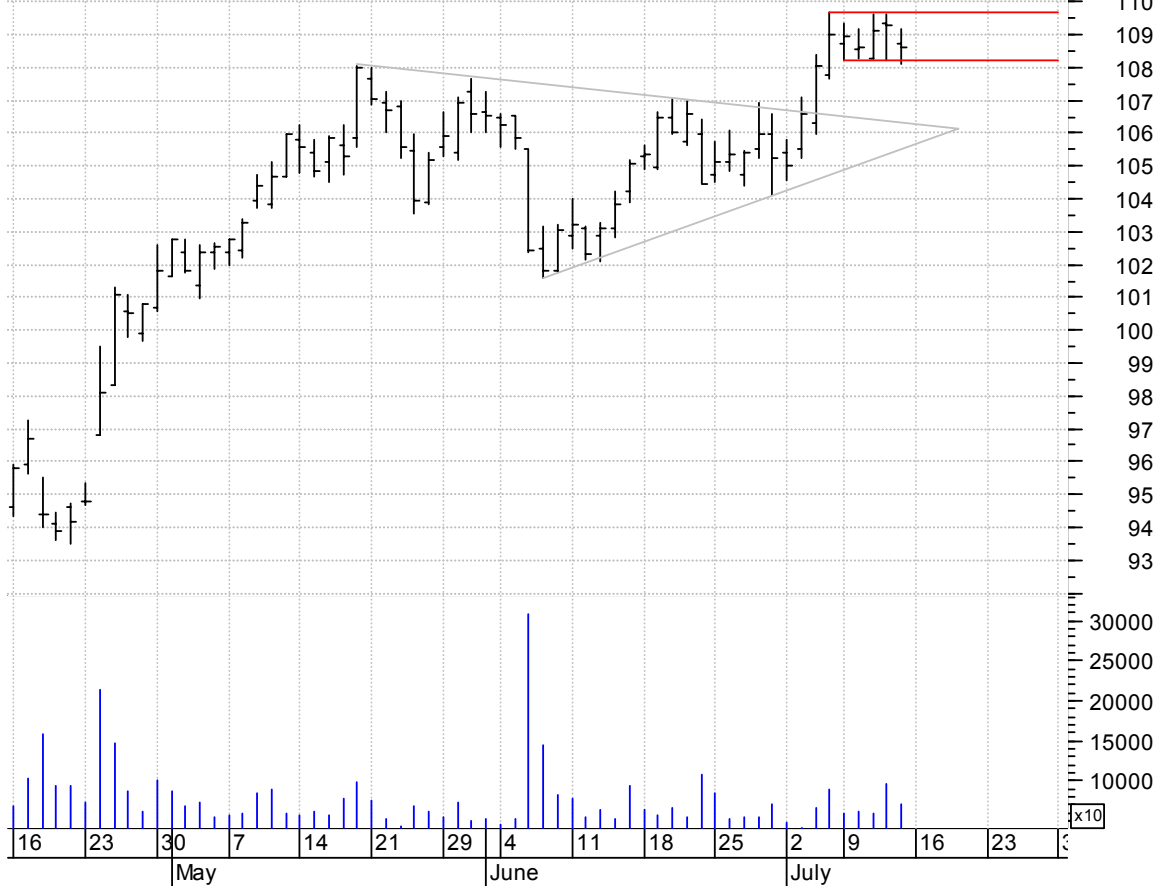
**HXM symm. tri. / buy on upside brkout on increased volume**

HOMEX DEVELOPMEN (62.4000, 62.6000, 61.8400, 62.3700 +0.1800)

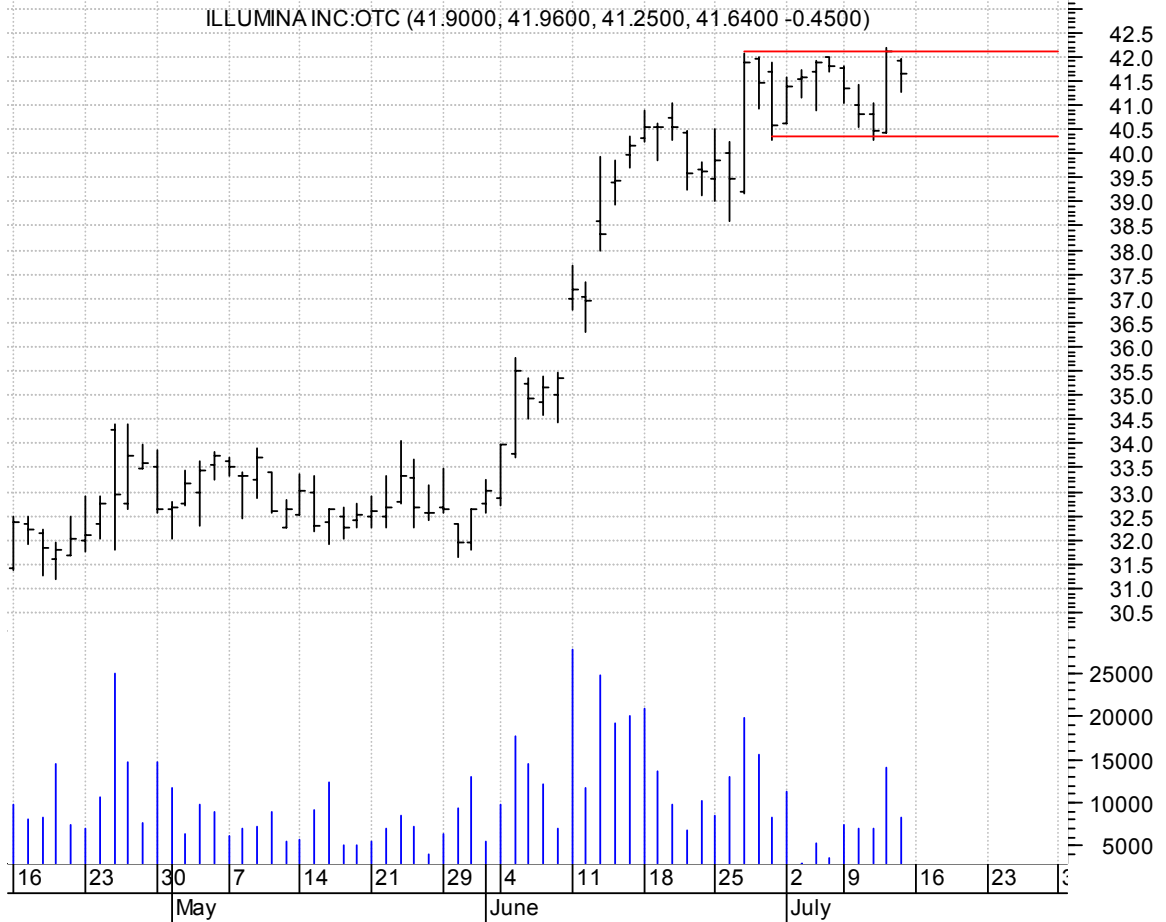


**IBM rectangle preceded by 'pole-like' move / buy on upside brkout on increased volume**

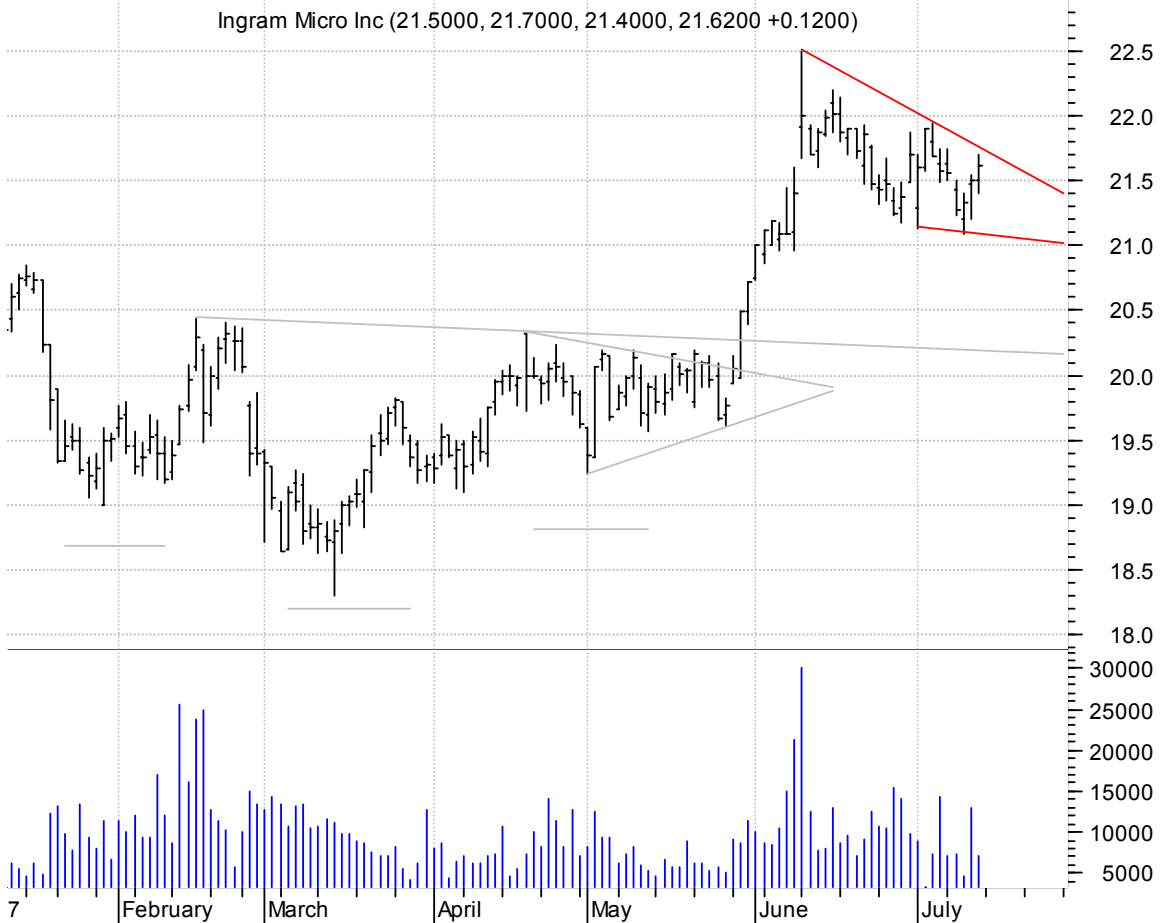
Intl Business Ma (108.750, 109.200, 108.100, 108.600 -0.6800)



**ILMN rectangle / buy on upside breakout on increased volume**



**IM falling wedge preceded by 'pole-like' move / buy on upside breakout on increased volume**



**JDAS symm. tri. / buy on upside brkout on increased volume**



**LWAY bull pennant / buy on upside brkout on increased volume**

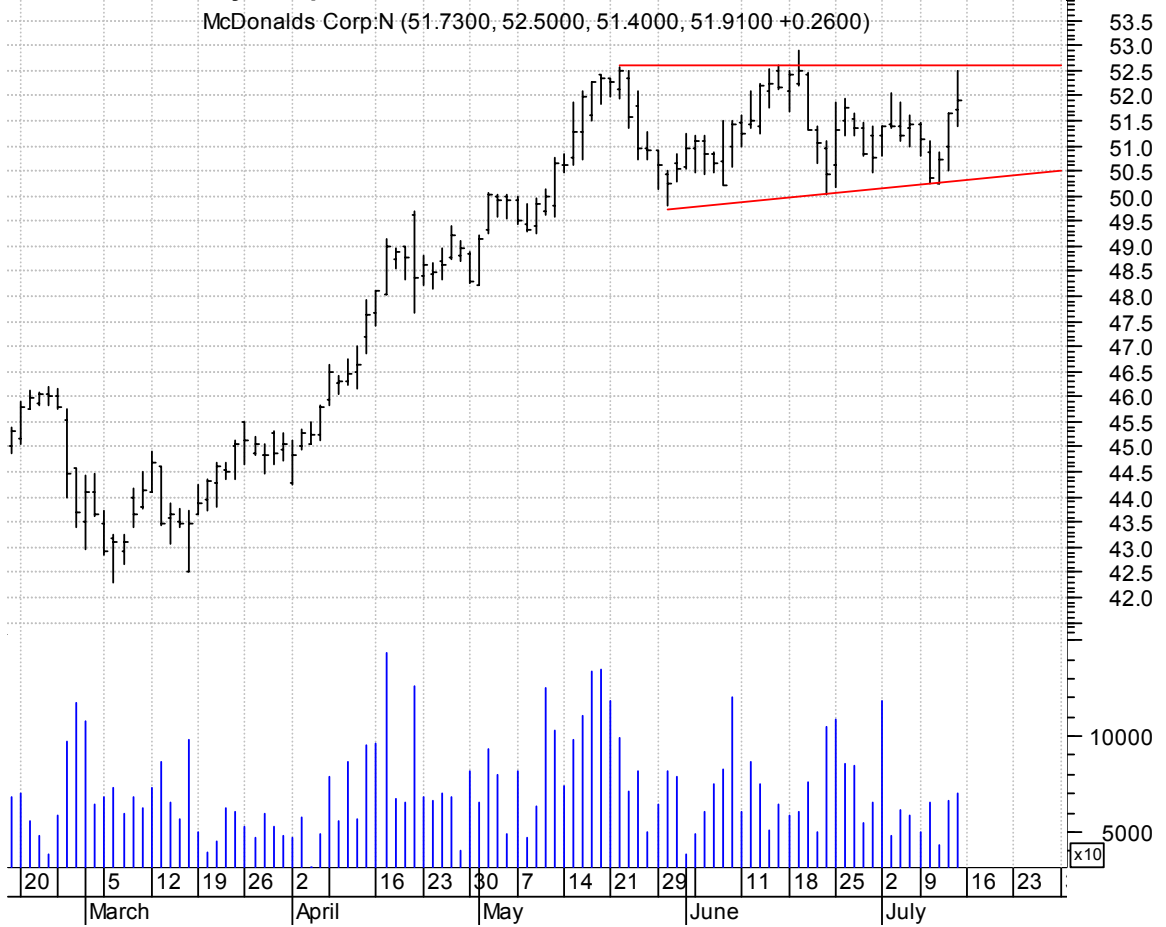




**LWSN symm. tri. / buy on upside brkout on increased volume**



**MCD asc. tri. / buy on upside brkout on increased volume**



**MEND symm. tri. preceded by 'pole-like' move / buy on upside brkout thru dotted red line on inc. vol.**

MICRUS ENDOVASCU (25.7700, 25.7800, 24.2700, 24.6100 -1.1100)



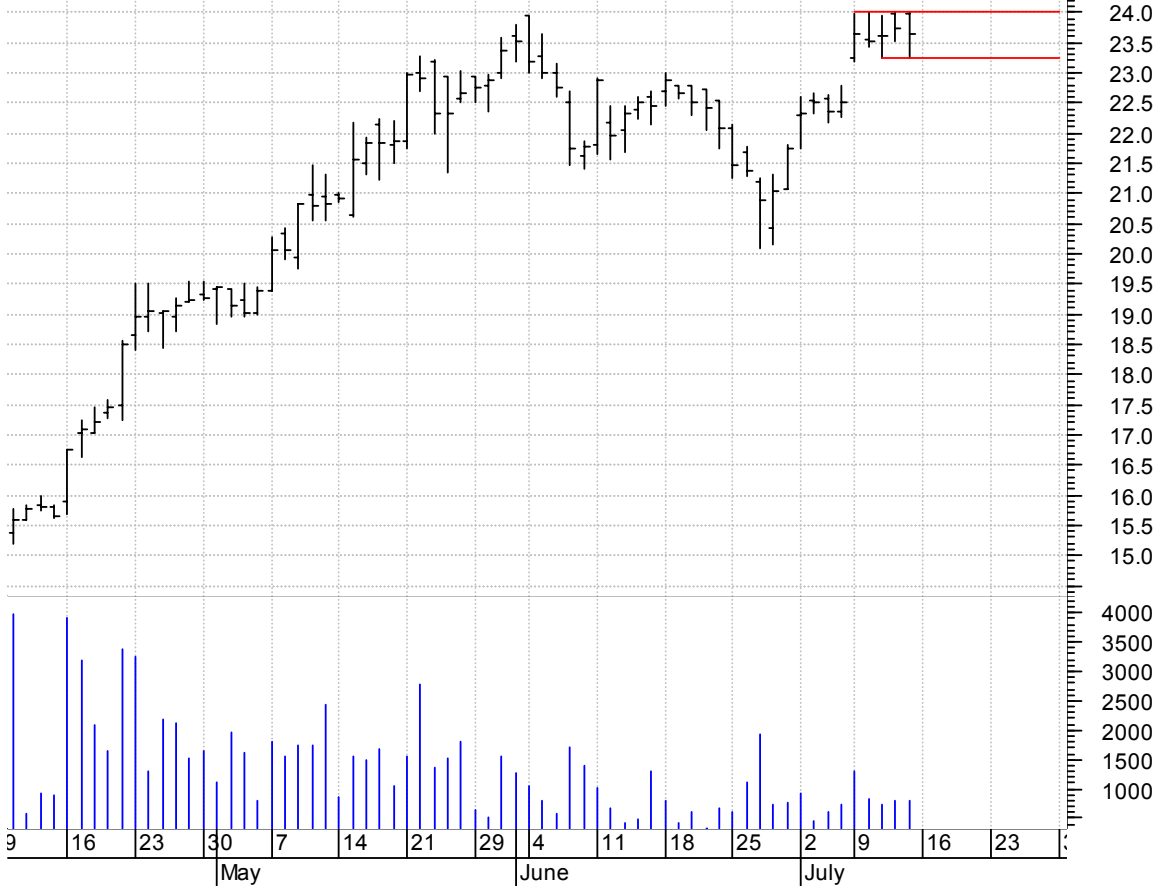
**MFLO sloppy rectangle preceded by 'pole-like' move / buy on upside brkout on increased volume**

Moldflow Cp:OTC (23.0100, 23.4500, 22.8000, 22.8700 -0.1900)



**ONAV rectangle preceded by 'pole-like' move / buy on upside brkout on increased volume**

Omega Navigation (23.9800, 24.0000, 23.2500, 23.6500 -0.0700)



**OYOG symm. tri. / buy on upside brkout on increased volume**

Oyo Geospace Cor (80.1000, 80.9600, 78.7800, 79.8000 -0.1400)



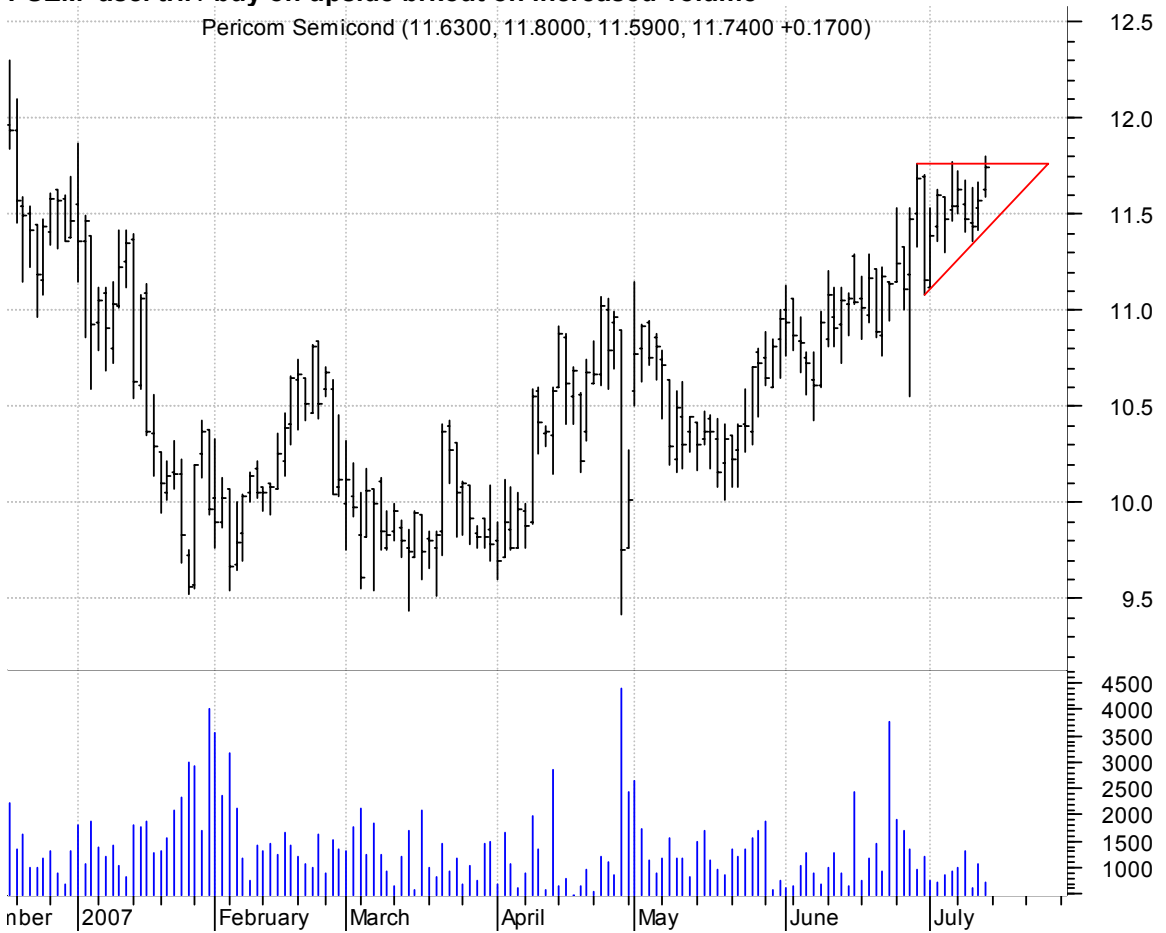
**PRGX bullish flagging / buy on upside breakout on increased volume**

PRG-Schultz Intl (15.4600, 15.9700, 15.3300, 15.7700 +0.2000)



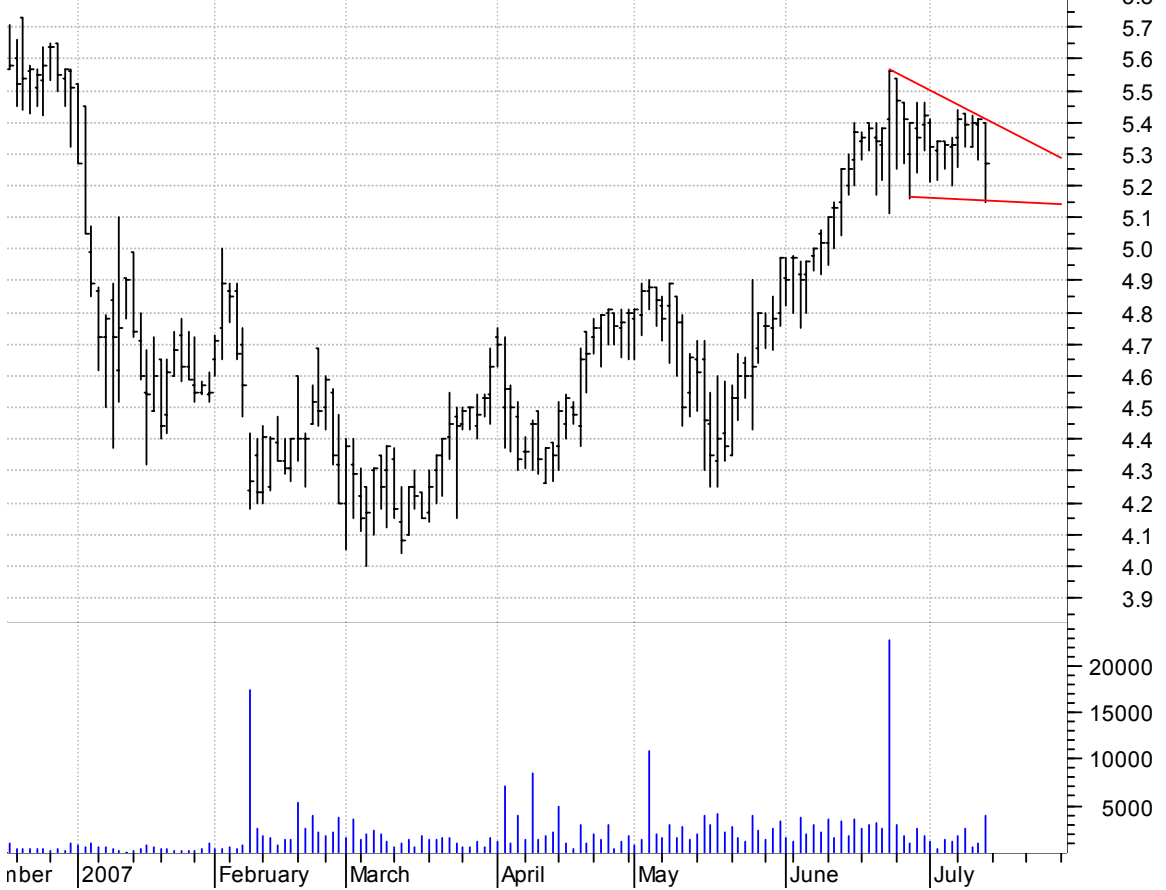
**PSEM asc. tri. / buy on upside breakout on increased volume**

Pericom Semicond (11.6300, 11.8000, 11.5900, 11.7400 +0.1700)



**RAME falling wedge / buy on upside brkout on increased volume**

TREMISIS ENERGY: (5.4000, 5.4000, 5.1500, 5.2700 -0.1400)



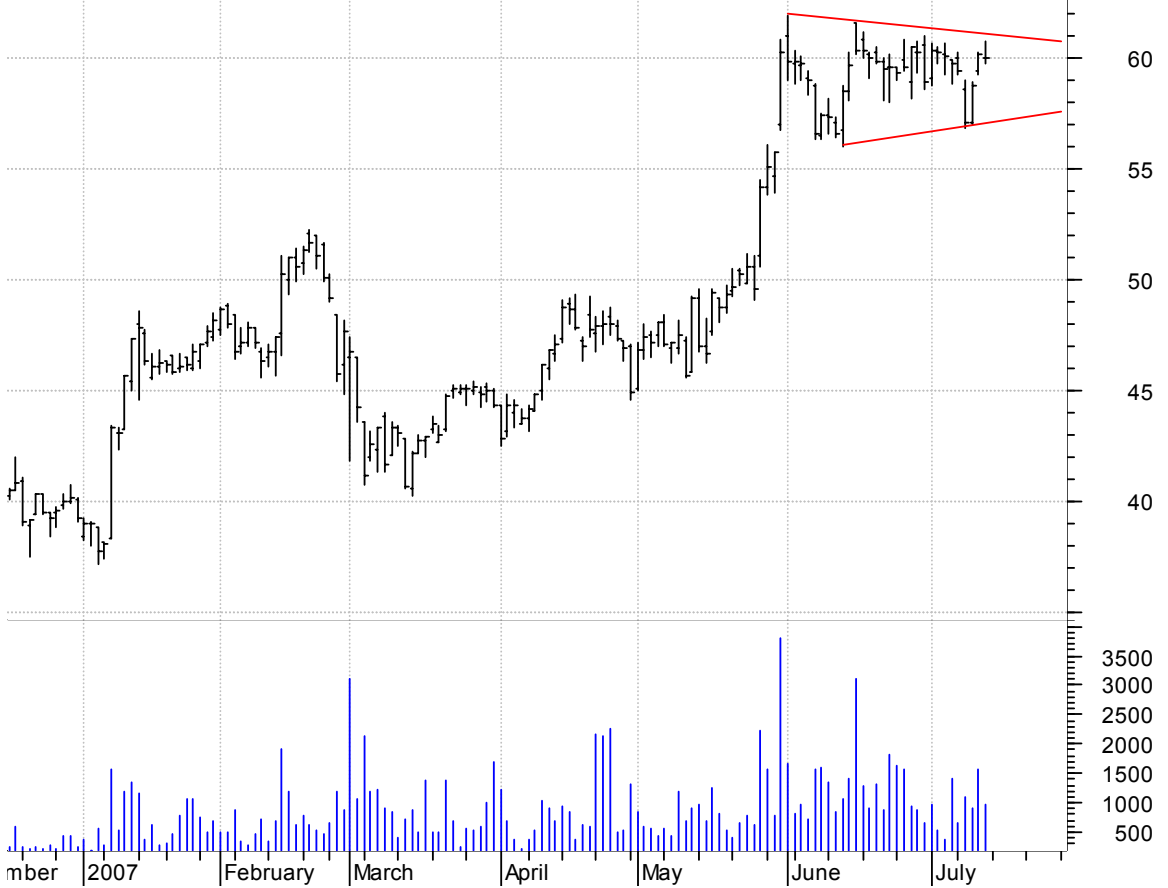
**ROLL symm. tri. / buy on upside brkout on increased volume**

RBC BEARINGS INC (41.9600, 41.9600, 41.5000, 41.7000 -0.2900)



**SF symm. tri. preceded by 'pole-like' move / buy on upside brkout on increased volume**

Stifel Financial (60.0000, 60.7800, 59.7400, 59.9700 -0.2300)



**SPN symm. tri. / buy on upside brkout on increased volume**

Superior Energy (40.0600, 40.6000, 39.7800, 40.5600 +0.1200)



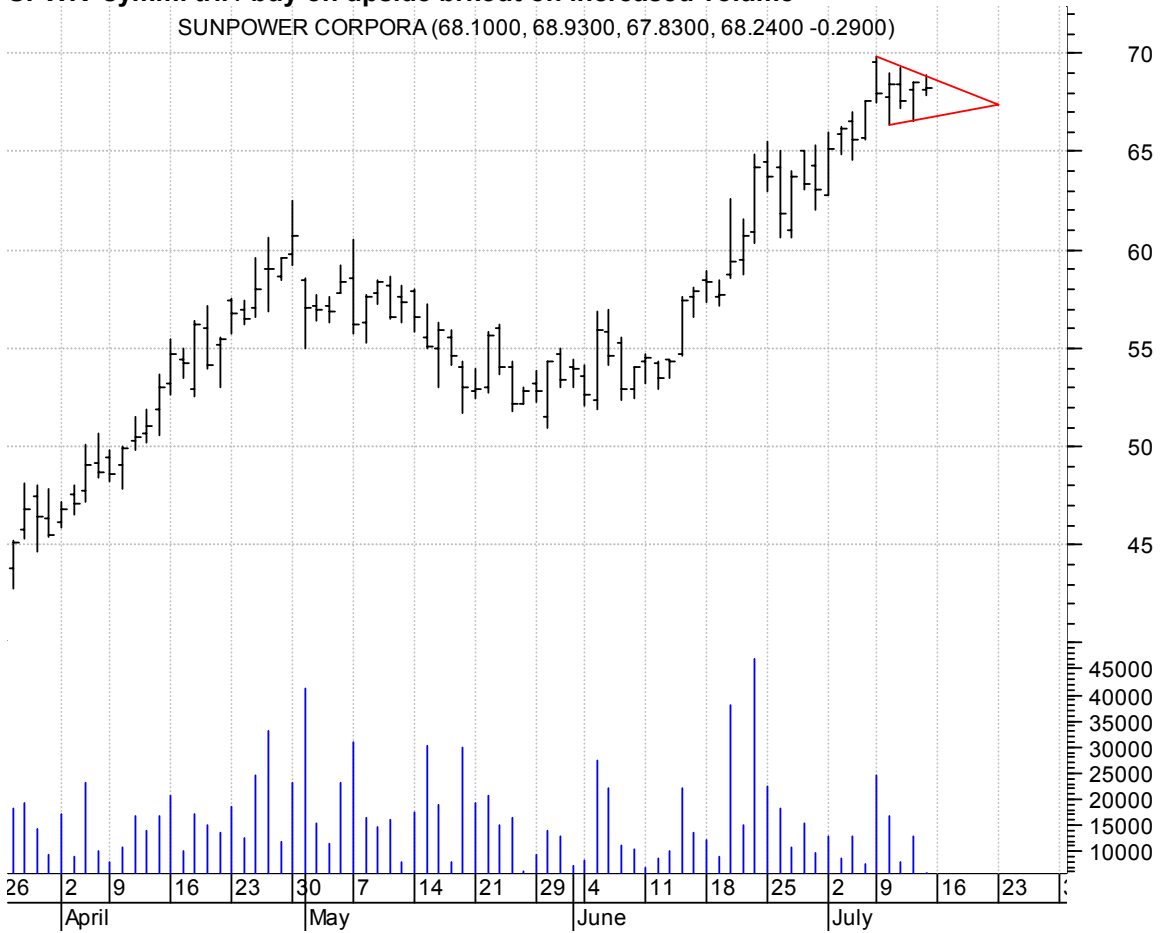
**SPSS symm. tri. / buy on upside breakout on increased volume**

SPSS Inc.OTC (45.9800, 46.0000, 45.1600, 45.6400 -0.5400)



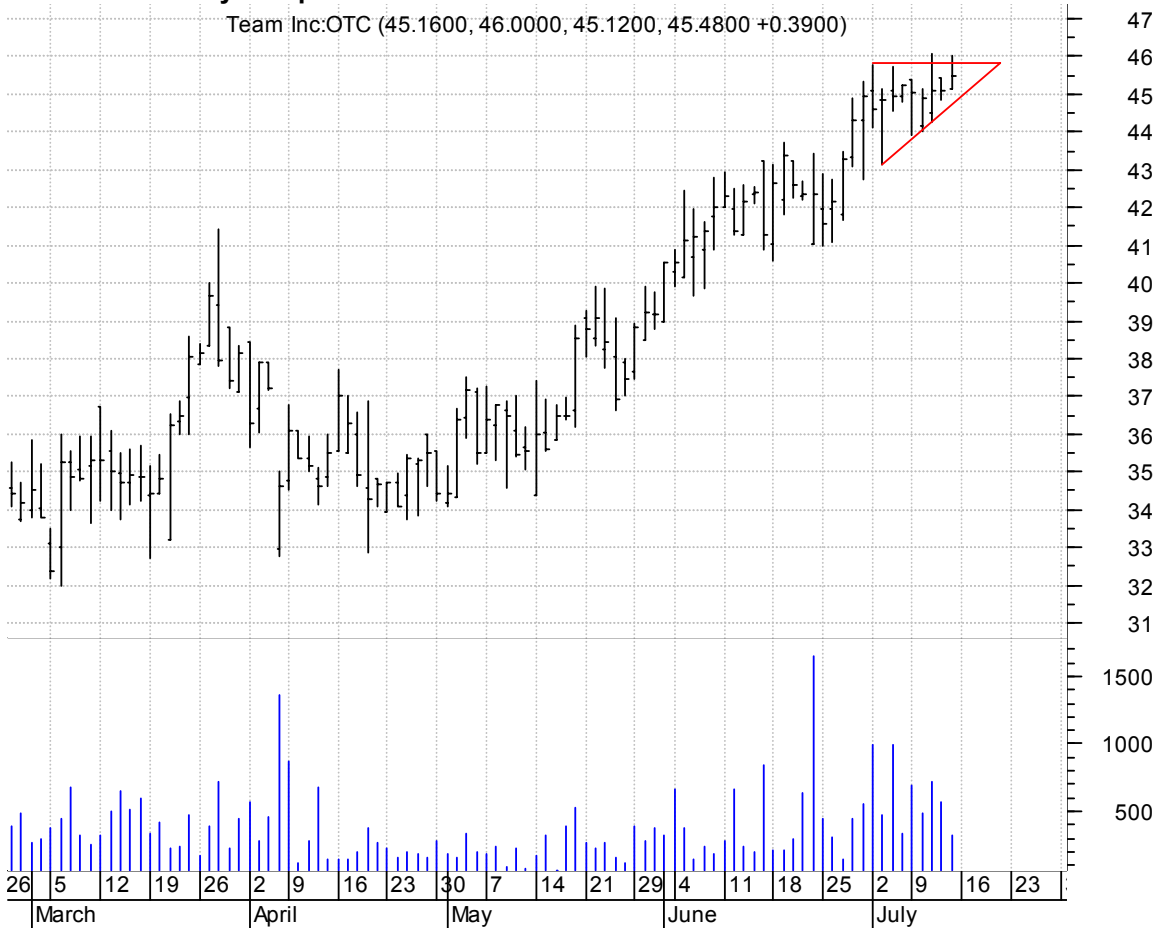
**SPWR symm. tri. / buy on upside breakout on increased volume**

SUNPOWER CORPORA (68.1000, 68.9300, 67.8300, 68.2400 -0.2900)



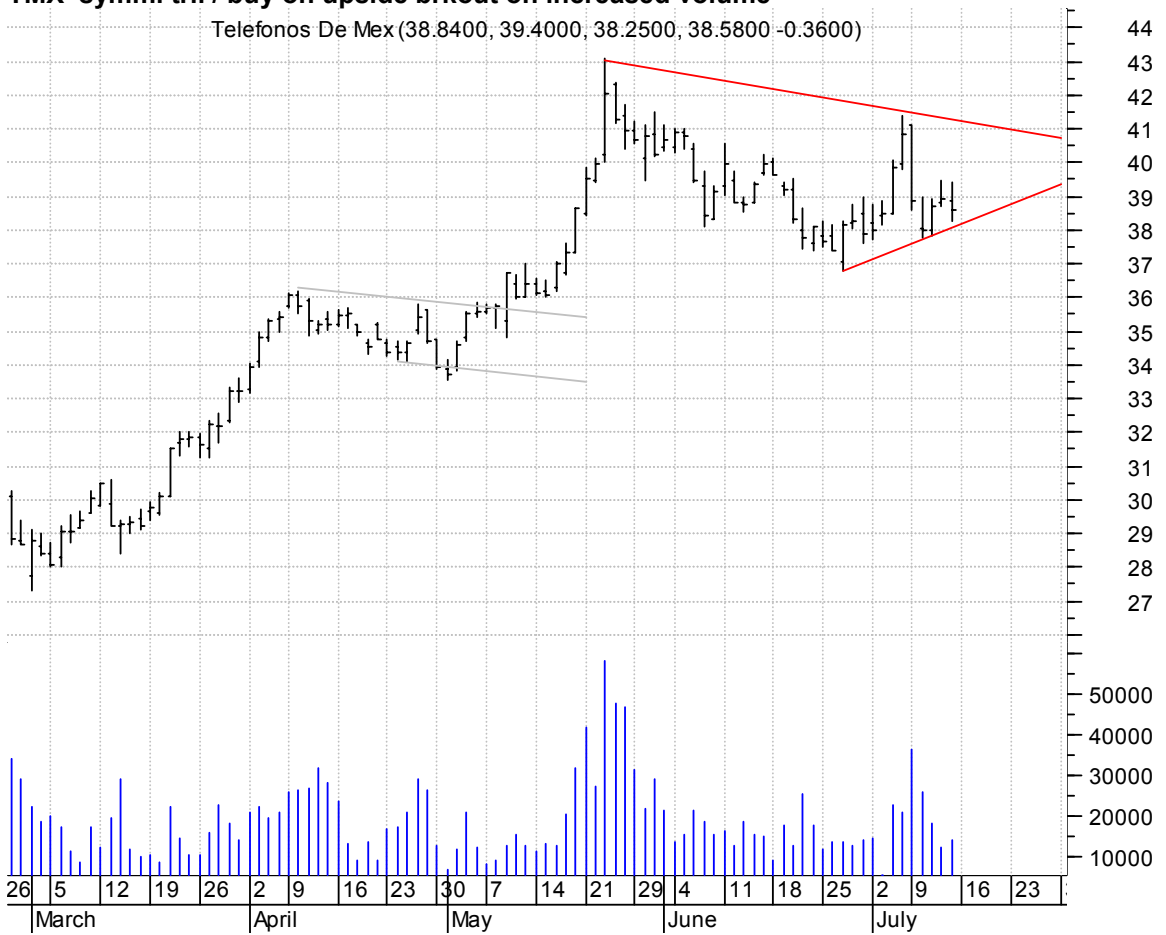
**TISI asc. tri. / buy on upside breakout on increased volume**

Team Inc:OTC (45.1600, 46.0000, 45.1200, 45.4800 +0.3900)



**TMX symm. tri. / buy on upside breakout on increased volume**

Telefonos De Mex (38.8400, 39.4000, 38.2500, 38.5800 -0.3600)





**VLCM bullish flagging / buy on upside brkout on increased volume**

VOLCOM INC:OTC (49.6300, 49.9600, 48.8000, 49.4600 +0.2400)



**VPRT symm. tri. / buy on upside brkout thru dotted red line on increased volume**

VISTAPRINT LIMIT (40.5700, 40.7100, 40.1100, 40.4800 -0.1800)



### VVUS bullish flagging / buy on upside brkout on increased volume

Vivus Inc:OTC (5.2800, 5.5000, 5.2800, 5.3800 +0.0800)



**chartpatterns.com**  
Chart Pattern Analysis for Timing the Markets

[KMatras@aol.com](mailto:KMatras@aol.com)