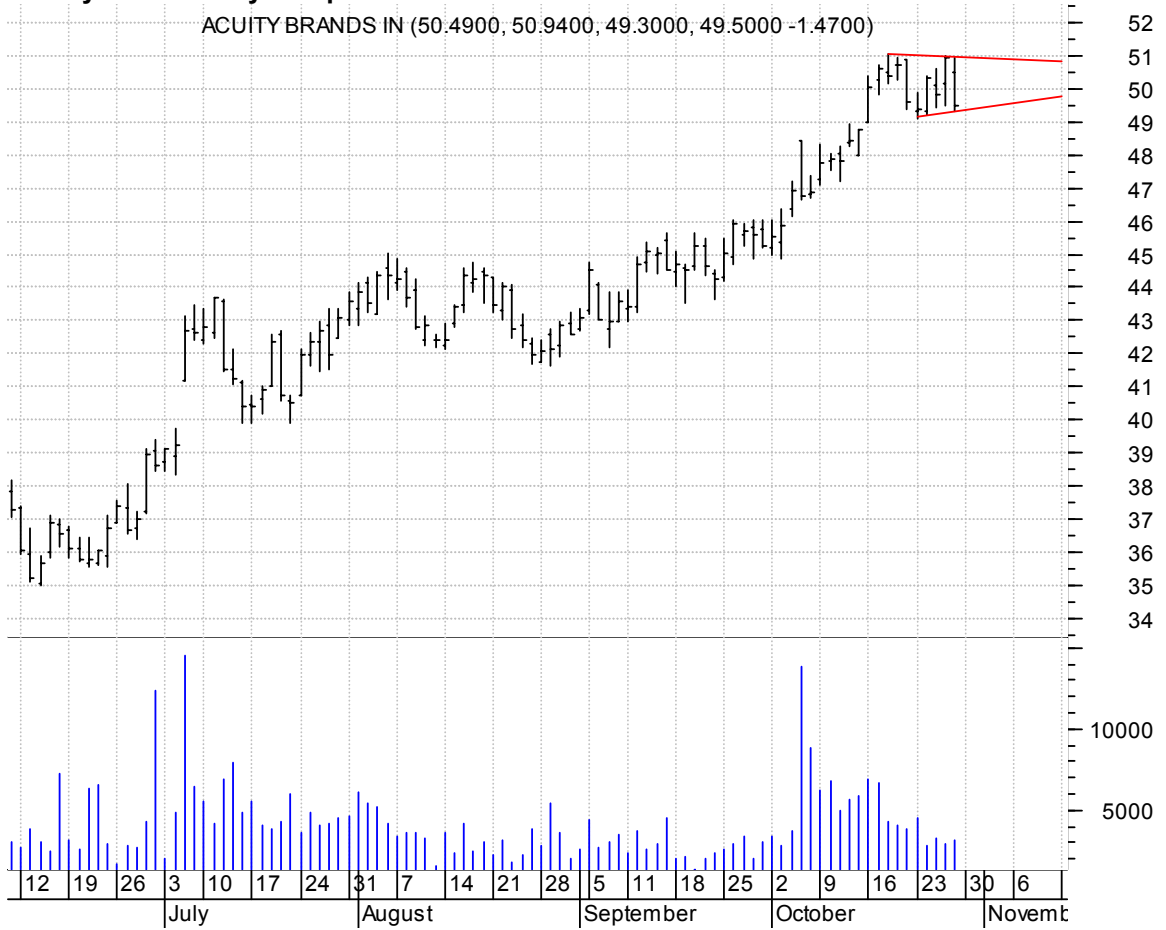


**AYI symm. tri. / buy on upside brkout on increased volume**

ACUITY BRANDS IN (50.4900, 50.9400, 49.3000, 49.5000 -1.4700)



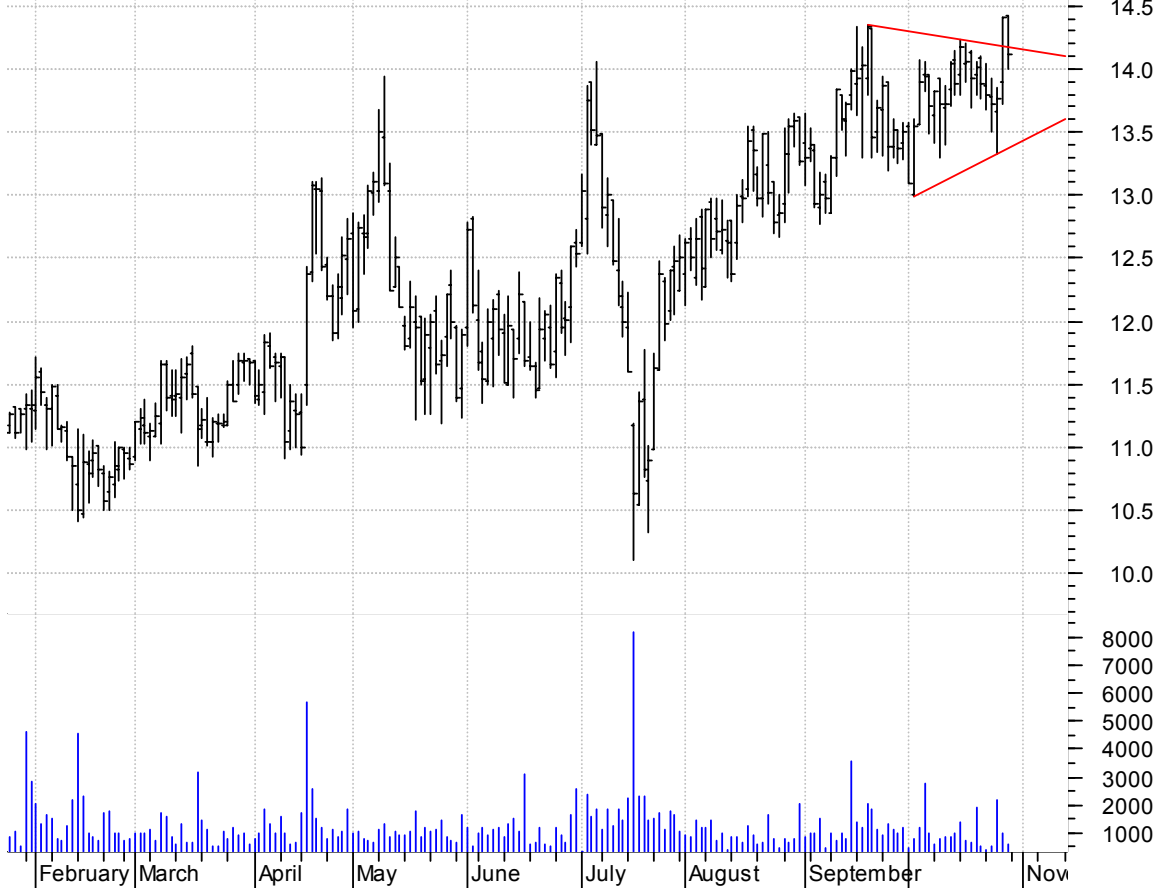
**CHDX symm. tri. / buy on upside brkout on increased volume**

US-China Industr (13.0700, 13.3700, 13.0300, 13.2000 +0.0100)



**DGII symm. tri. / buy on upside brkout on increased volume**

Digi Intl Inc:OT (14.4200, 14.4200, 14.0000, 14.1200 -0.2900)



**DLTR symm. tri. / buy on upside brkout on increased volume**

Dollar Tree Stor (30.8700, 31.0900, 30.6800, 30.7700 -0.2700)



### ERTS symm. tri. / buy on upside brkout on increased volume

Electronic Arts: (54.7700, 55.3300, 54.3400, 54.5100 -0.2100)



### FUL symm. tri. / buy on upside brkout on increased volume

Fuller H B Co:NY (24.9400, 25.0800, 24.3100, 24.3100 -0.7100)



**GENZ falling wedge / buy on upside brkout on increased volume**

Genzyme Cp:OTC (69.3100, 69.8100, 68.5700, 68.6900 -0.9800)



**HSIC symm. tri. / buy on upside brkout on increased volume**

Schein (Henry) I (51.3400, 51.3400, 50.7400, 51.0300 -0.3200)



**IBM symm. tri. preceded by 'pole-like' move / buy on upside brkout on increased volume**



**INTC symm. tri. / buy on upside brkout on increased volume**



**falling wedge preceded by 'pole-like' move / buy on upside breakout on increased volume**

Coca Cola Co:NYS (46.9600, 47.0200, 46.7600, 46.8700 -0.2700)



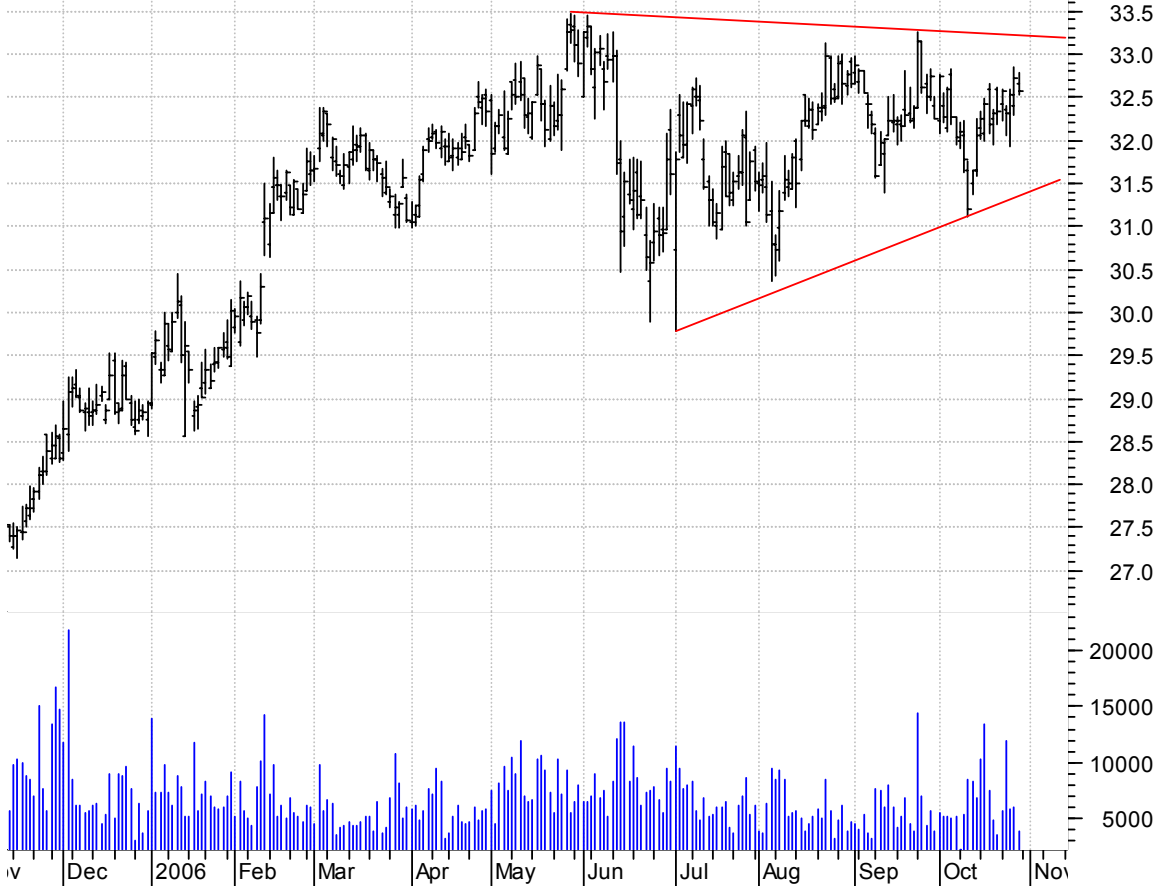
**LRCX symm. tri. / buy on upside breakout on increased volume**

Lam Research Cp: (51.2000, 51.2200, 48.5800, 48.7400 -2.5100)



**MFC symm. tri. / buy on upside breakout on increased volume**

Manulife Financi (32.6500, 32.7800, 32.5400, 32.5700 -0.1500)



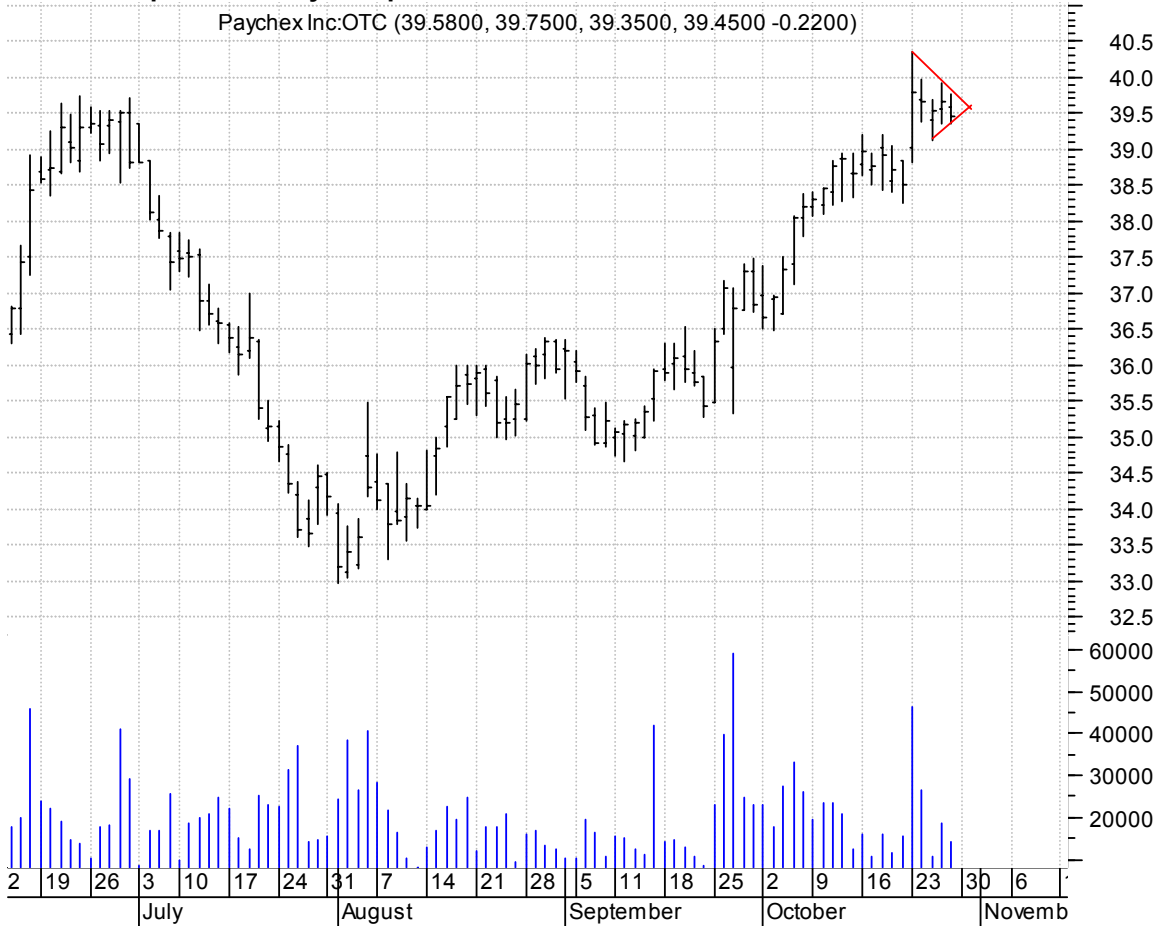
**OCN symm. tri. / buy on upside breakout thru dotted red line on increased volume**

Ocwen Financial (16.0300, 16.1800, 15.8700, 16.0000 -0.1000)



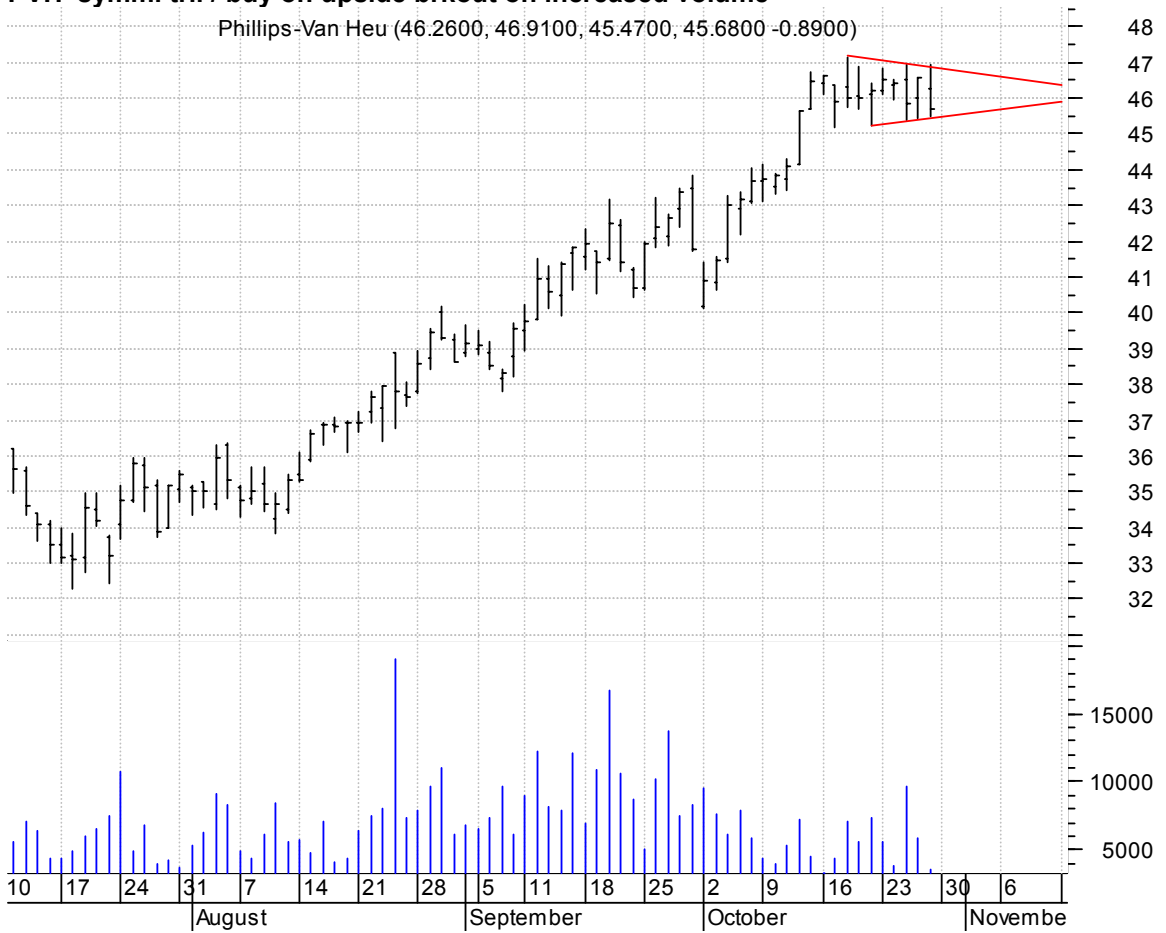
**PAYX bull pennant / buy on upside breakout on increased volume**

Paychex Inc:OTC (39.5800, 39.7500, 39.3500, 39.4500 -0.2200)



**PVH symm. tri. / buy on upside breakout on increased volume**

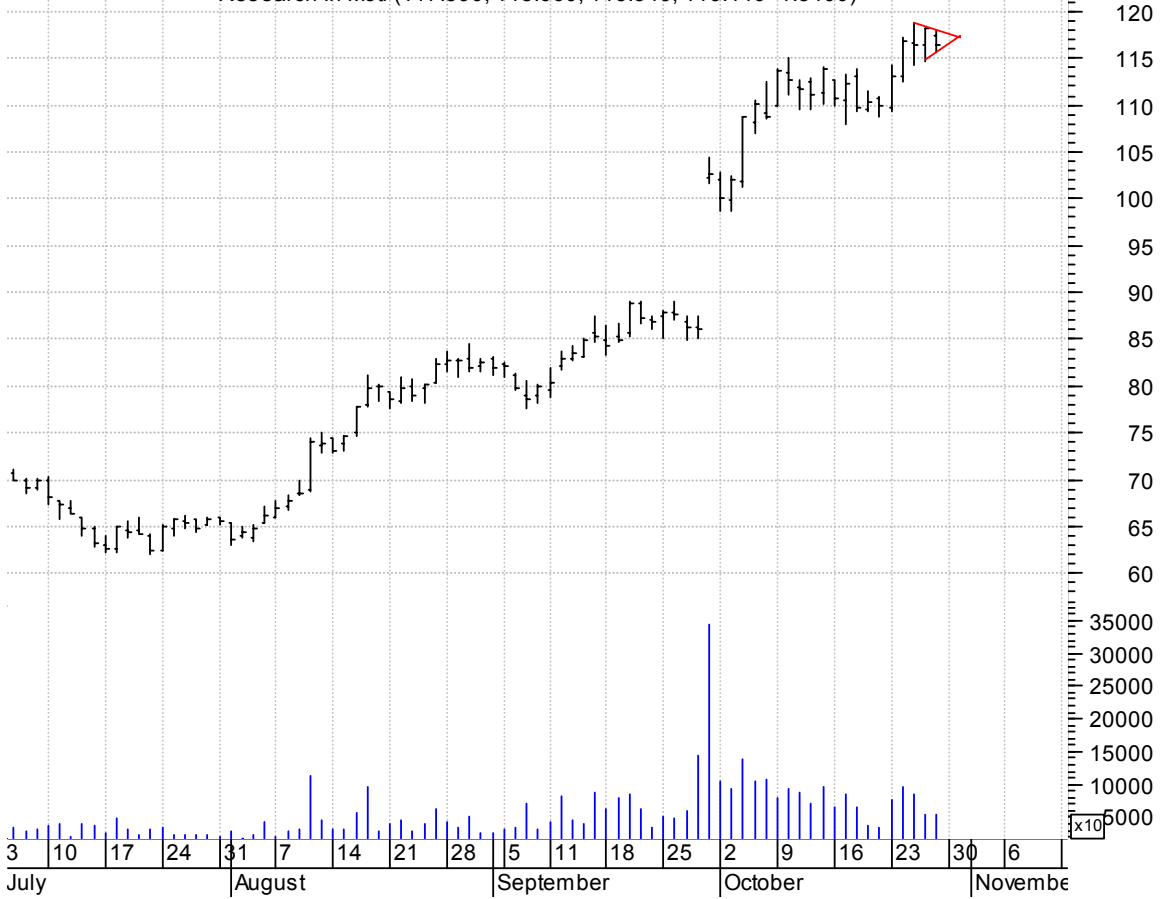
Phillips-Van Heu (46.2600, 46.9100, 45.4700, 45.6800 -0.8900)





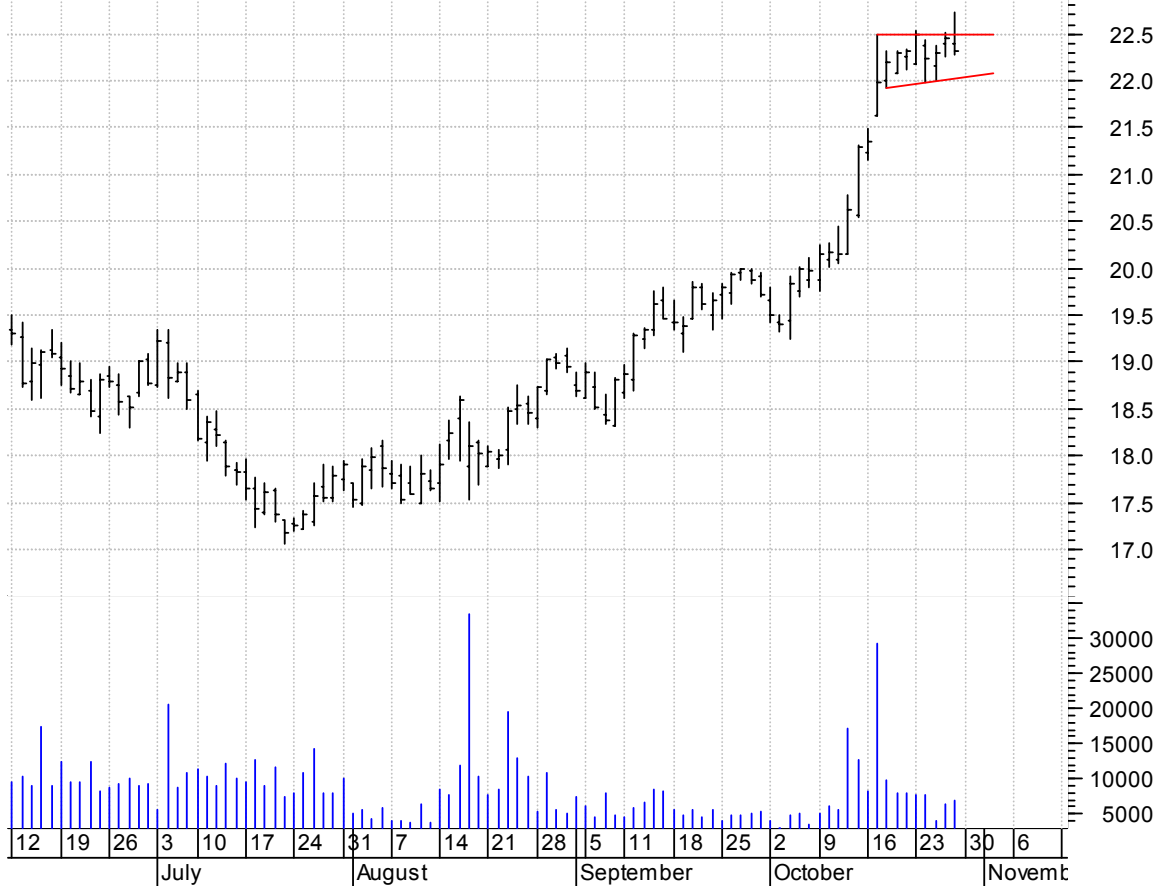
**RIMM symm. tri. (better seen on intraday chart) / buy on upside brkout on increased volume**

Research In Moti (117.390, 118.060, 115.540, 116.440 -1.8400)



**SNPS asc. tri. preceded by 'pole-like' move / buy on upside brkout on increased volume**

Synopsys Inc:OTC (22.4000, 22.7200, 22.2800, 22.3200 -0.1400)



**STEL symm. tri. / buy on upside brkout on increased volume**

Stellent Inc:OTC (11.5900, 11.6900, 11.4200, 11.4800 -0.1000)



**TEVA desc. tri. preceded by 'pole-like' move / sell on downside brkout on increased volume**

Teva Pharm Ind I (33.6200, 33.6300, 33.1900, 33.2500 -0.3700)



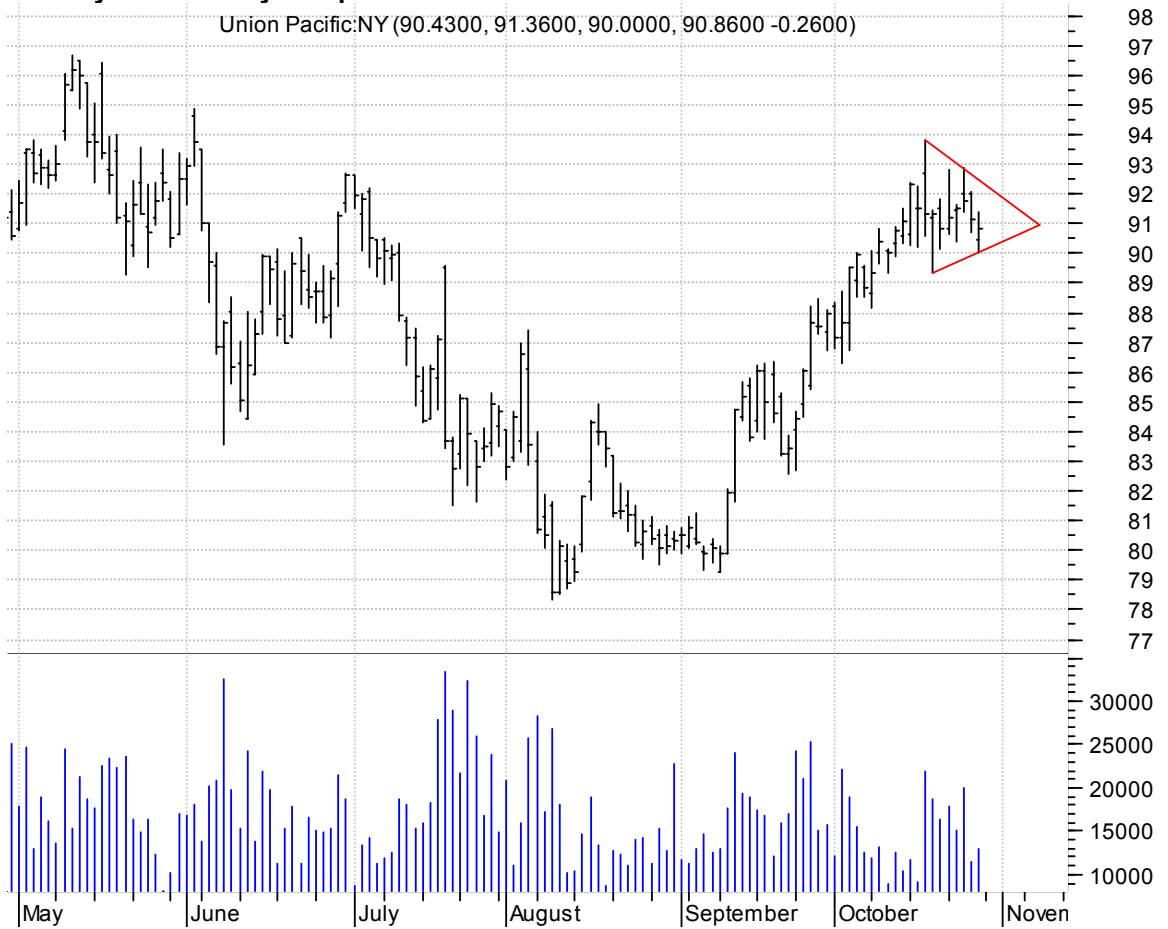
**TRIB bullish flagging / buy on upside breakout on increased volume**

Trinity Biotech (9.2500, 9.2500, 8.6700, 9.0500 -0.2000)



**UNP symm. tri. / buy on upside breakout on increased volume**

Union Pacific:NY (90.4300, 91.3600, 90.0000, 90.8600 -0.2600)



**chartpatterns.com**  
Chart Pattern Analysis for Timing the Markets

[KMatras@aol.com](mailto:KMatras@aol.com)