

ASTSF symm. tri. / buy on upside brkout on increased volume

ASE Test Inc:OTC (8.3400, 8.4000, 8.2200, 8.2400 -0.0700)



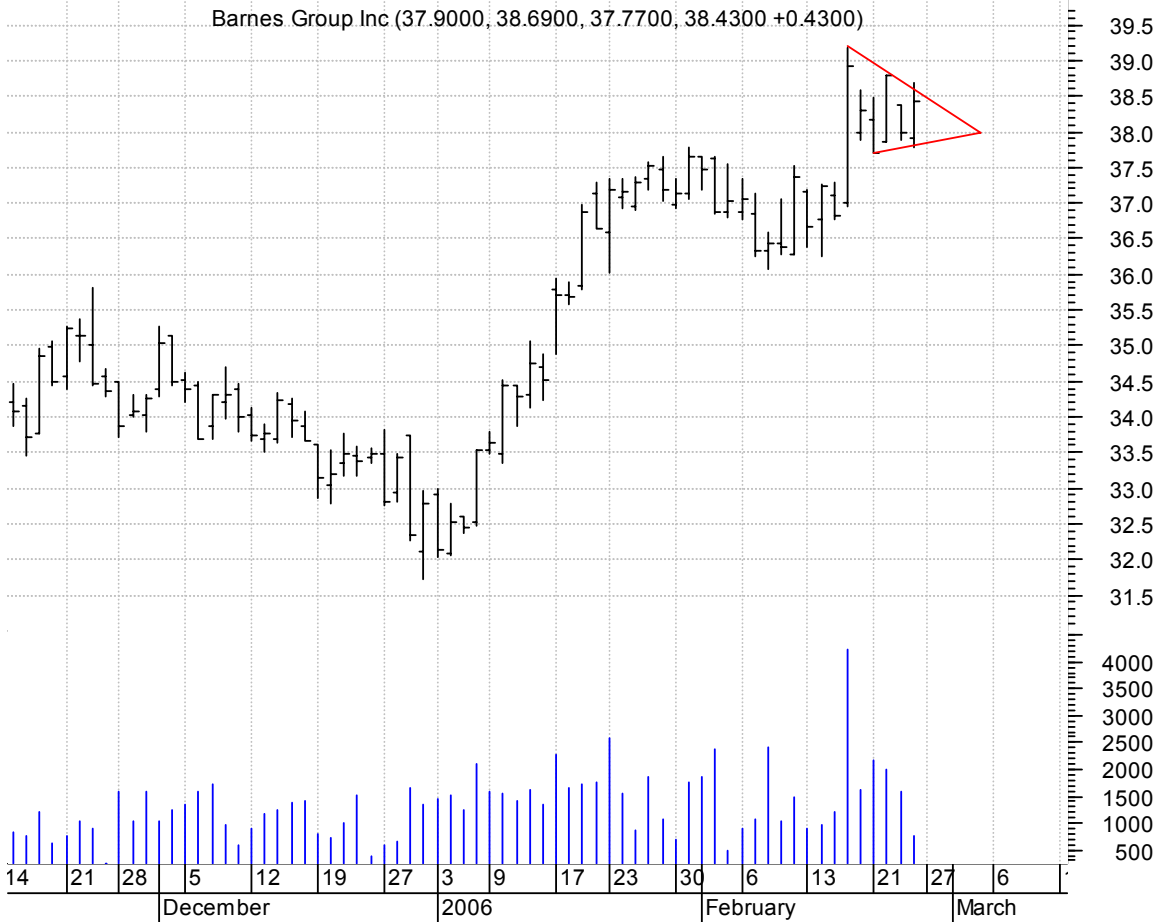
ATHR symm. tri. / buy on upside brkout on increased volume

ATHEROS COMMUN I (20.3700, 20.3900, 19.5500, 19.7400 -0.5500)



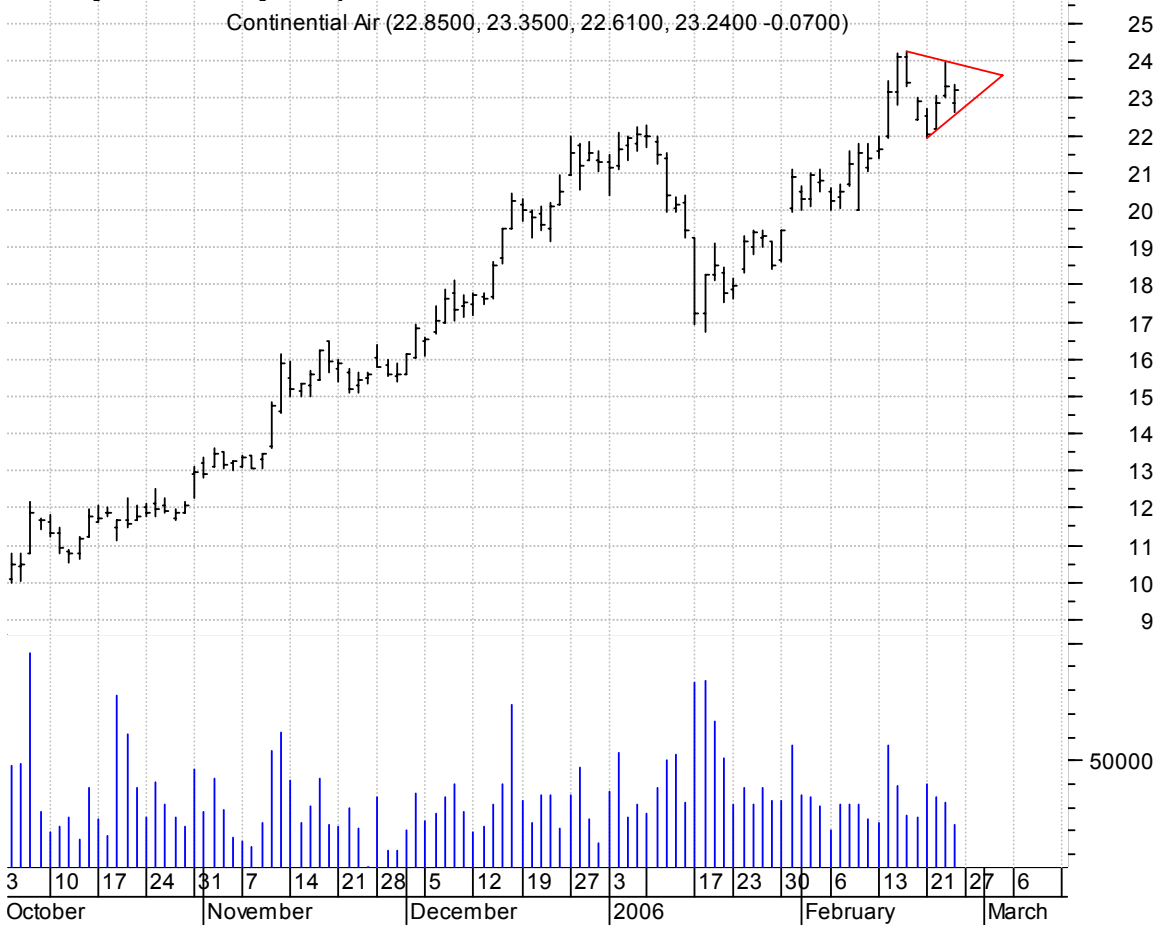
B symm. tri. preceded by 'pole-like' move / buy on upside brkout on increased volume

Barnes Group Inc (37.9000, 38.6900, 37.7700, 38.4300 +0.4300)



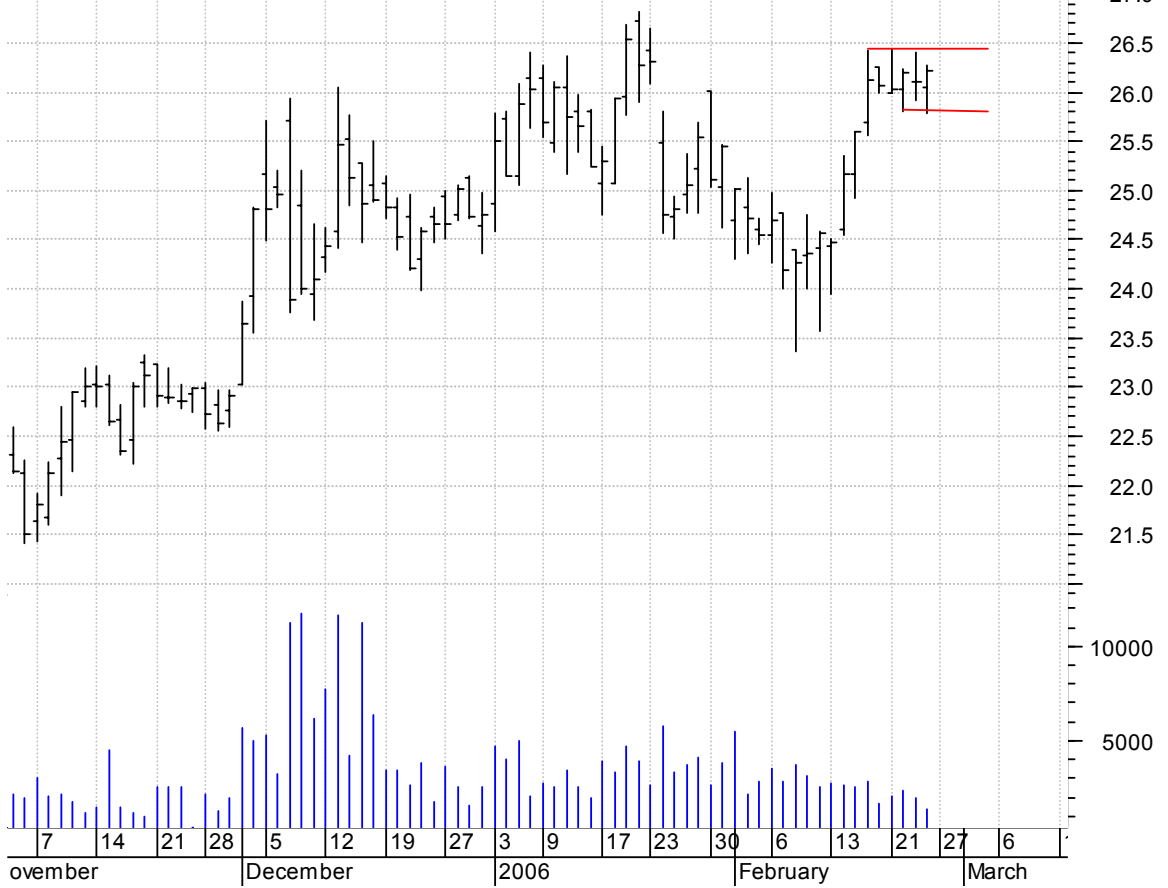
CAL symm. tri. / buy on upside brkout on increased volume

Continental Air (22.8500, 23.3500, 22.6100, 23.2400 -0.0700)



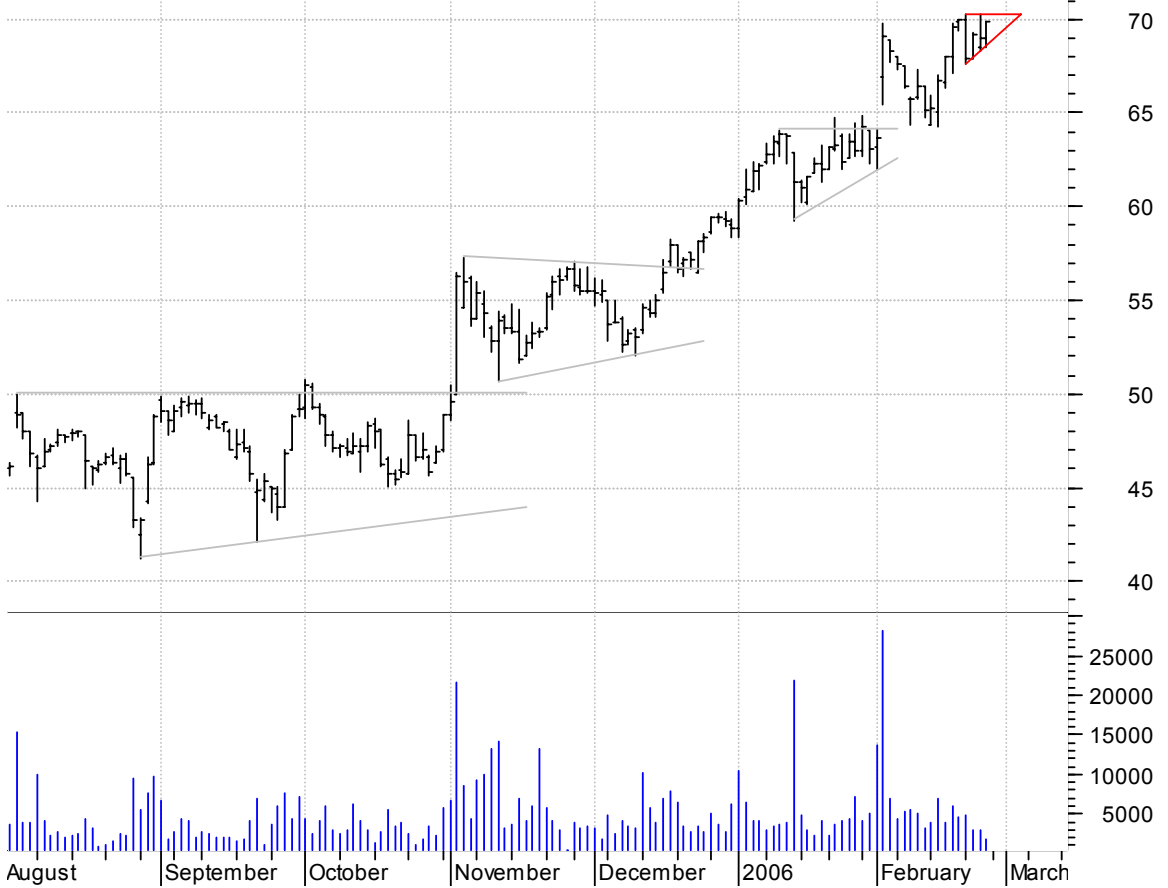
CASY rectangle preceded by 'polelike' move / buy on upside brkout on increased volume

Casey's General (26.0500, 26.2700, 25.7900, 26.2100 +0.1100)



CBG asc. tri. / buy on upside brkout on increased volume

CB RICHARD ELLIS (68.9800, 69.8500, 68.5300, 69.8300 +0.8500)



CELL asc. tri. preceded by 'pole-like' move / buy on upside brkout on increased volume

Brightpoint Inc: (28.6500, 29.1600, 28.2300, 28.8700 +0.1700)

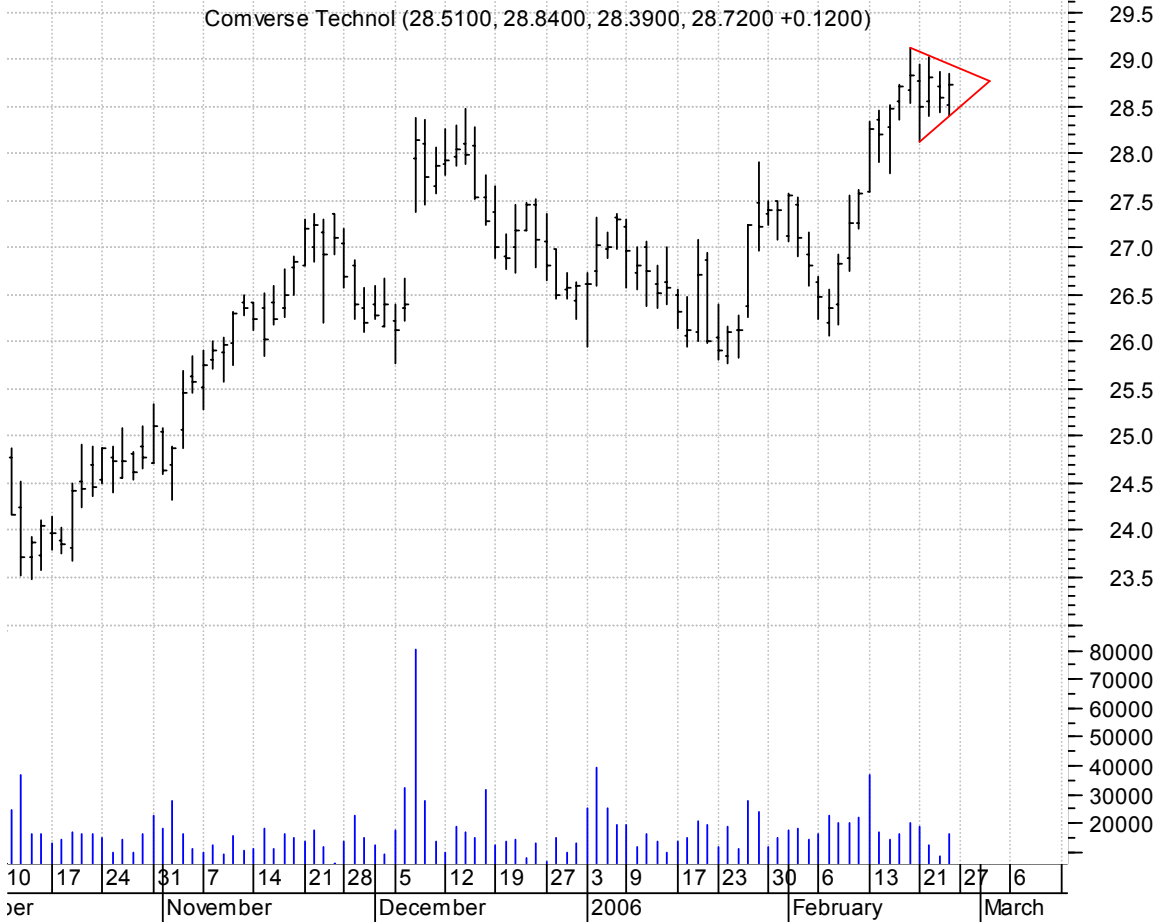


CLX symm. tri. preceded by 'pole-like' move / buy on upside brkout on increased volume

Clorox (The) Co: (60.6400, 61.7100, 60.2700, 61.5600 +0.7900)



CMVT symm. tri. preceded by 'pole-like' move / buy on upside brkout on increased volume



DLB bullish flagging / buy on upside brkout on increased volume



EMR symm. tri. preceded by 'pole-like' move / buy on upside brkout on increased volume

Emerson Electric (83.0000, 83.3800, 82.3600, 82.8000 -0.3600)



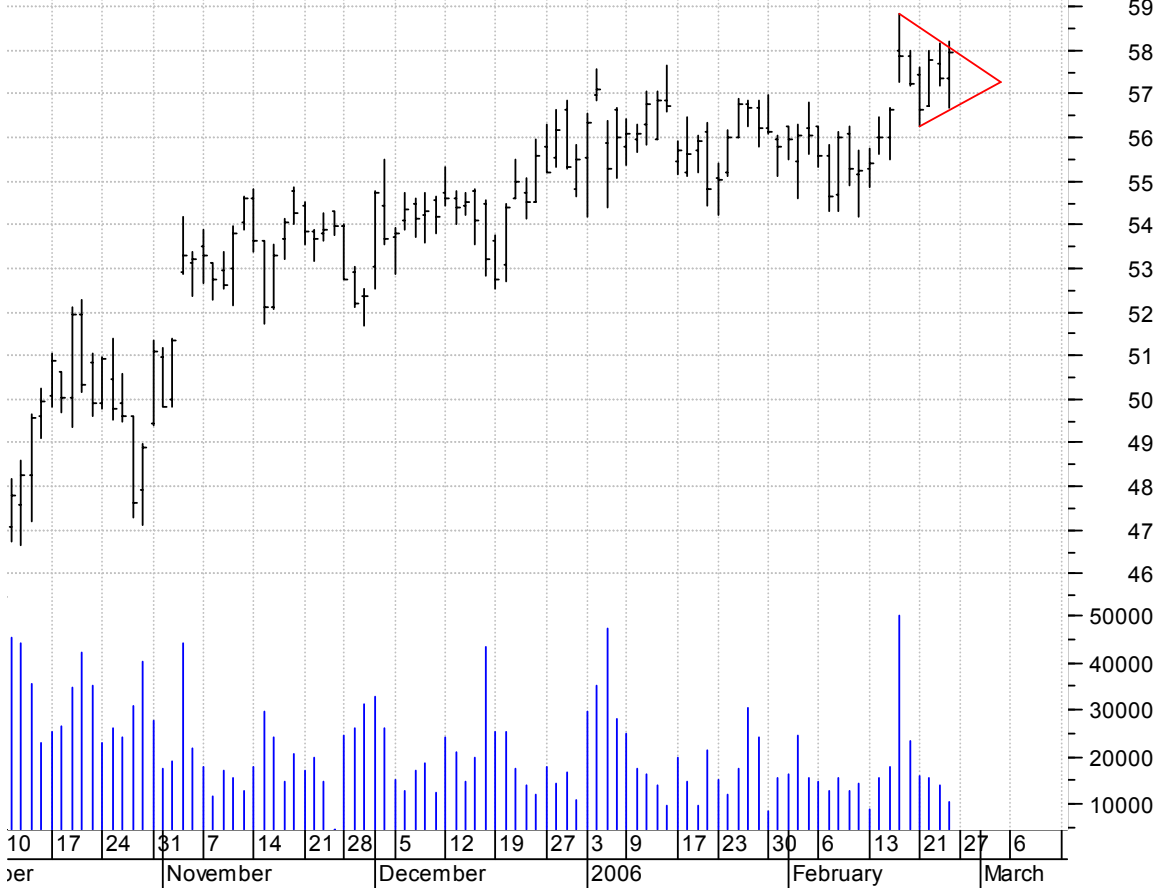
GILD sloppy asc. tri. / buy on upside brkout on increased volume

Gilead Science:O (61.4100, 61.9900, 60.2100, 61.6600 +0.3800)



JCP symm. tri. / buy on upside brkout on increased volume

Penney (JC) Co I (57.3400, 58.2000, 56.6600, 57.9500 +0.6100)



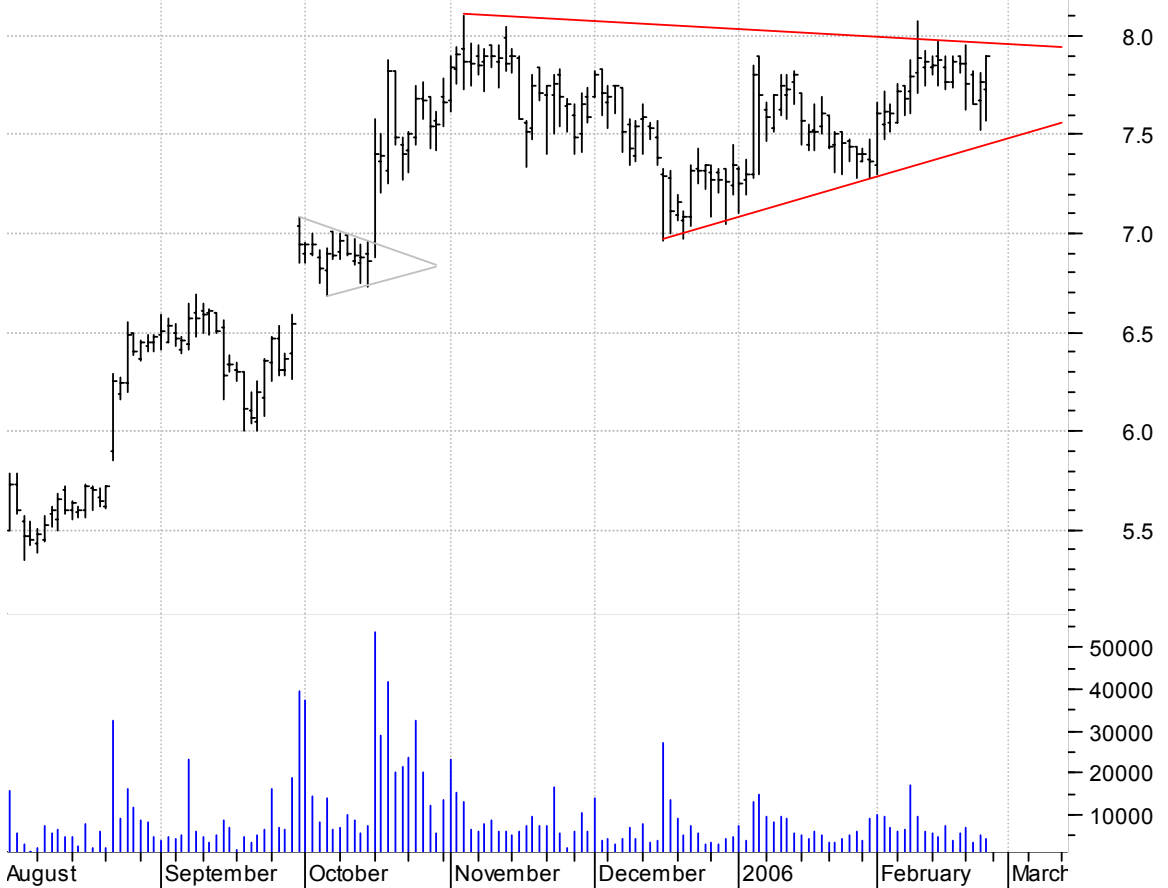
LI bull pennant (better seen on intraday chart) / buy on upside brkout on increased volume

LIDLAW INTL INC (28.1000, 28.2500, 27.9700, 28.1000 +0.0000)



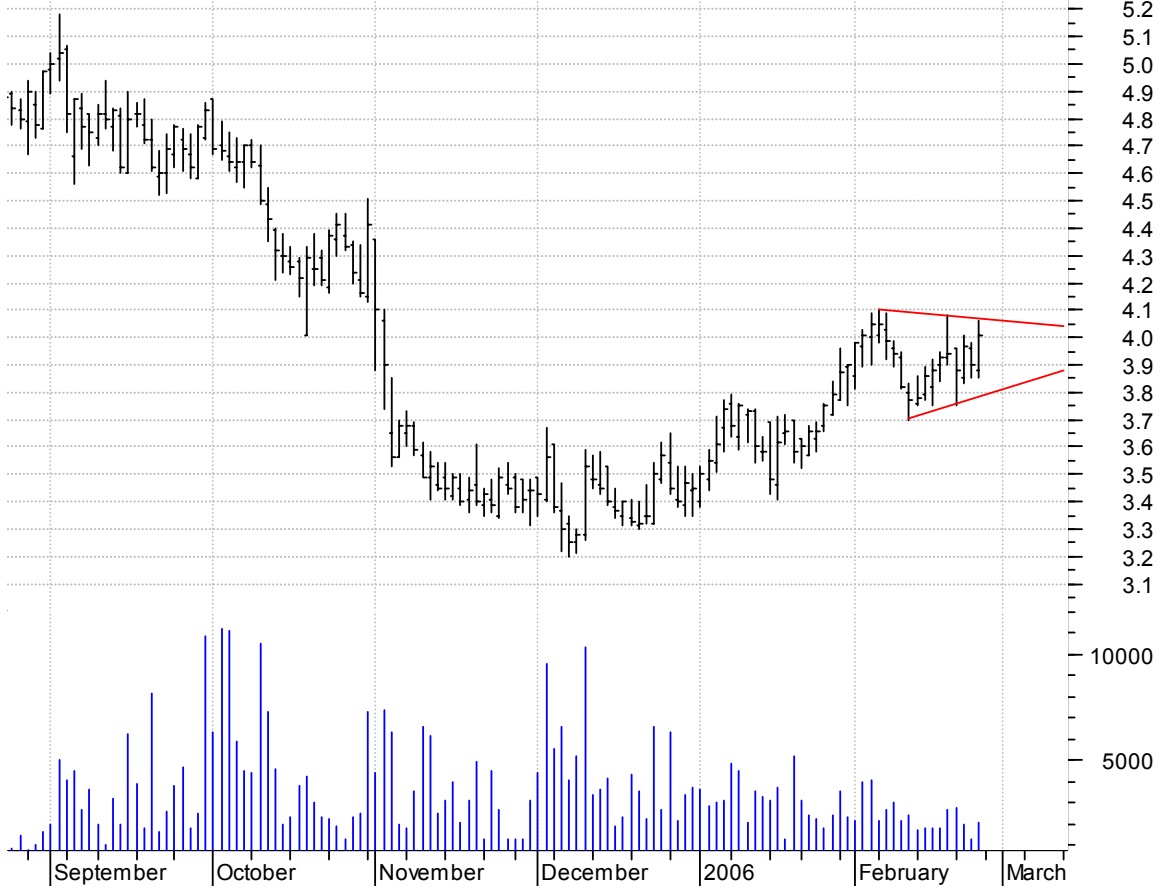
LWSN symm. tri. / buy on upside brkout on increased volume

LAWSON SOFTWARE (7.7300, 7.9000, 7.5700, 7.9000 +0.1300)



MCDT symm. tri. / buy on upside brkout on increased volume

MCDATA CP CL B:O (3.8800, 4.0600, 3.8500, 4.0100 +0.1100)



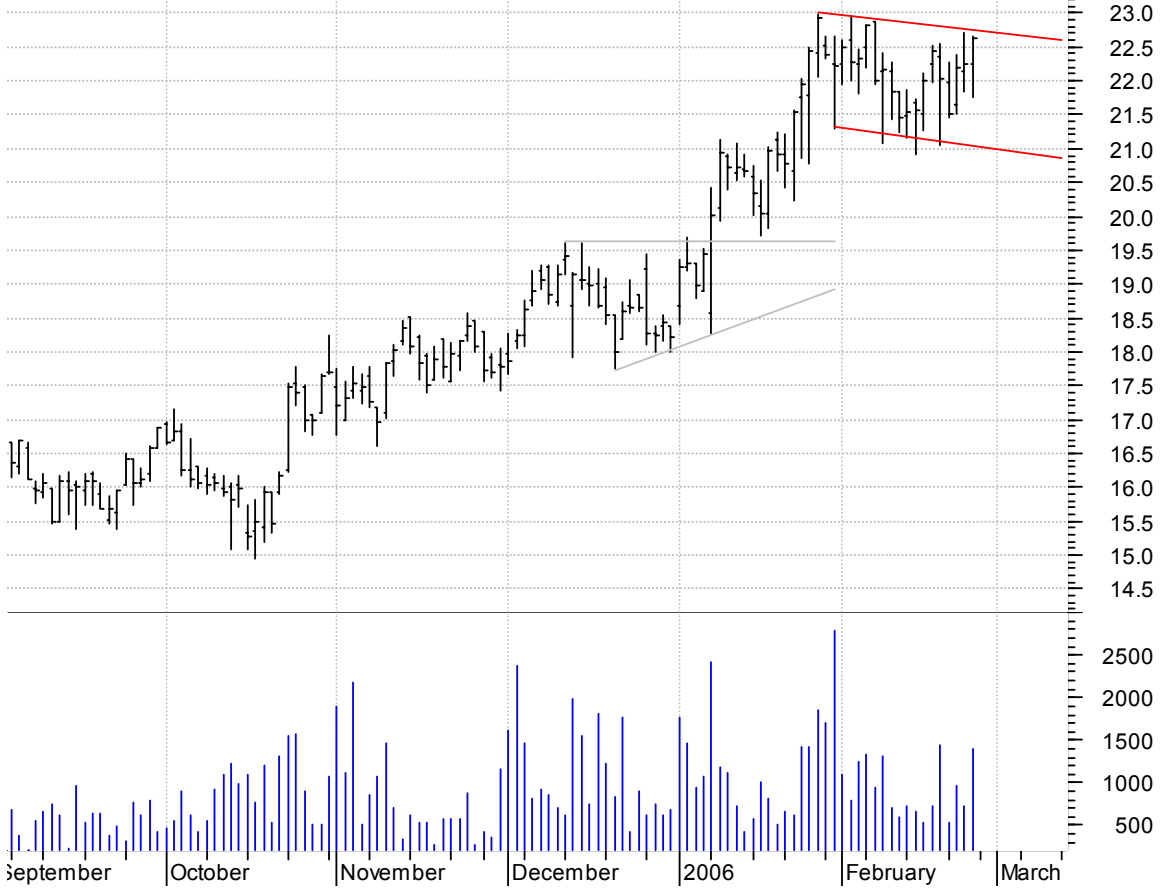
MFLX symm. tri. / buy on upside breakout on increased volume

MULTI-FINELINE E (50.5800, 53.5500, 50.5800, 52.5400 +2.2000)

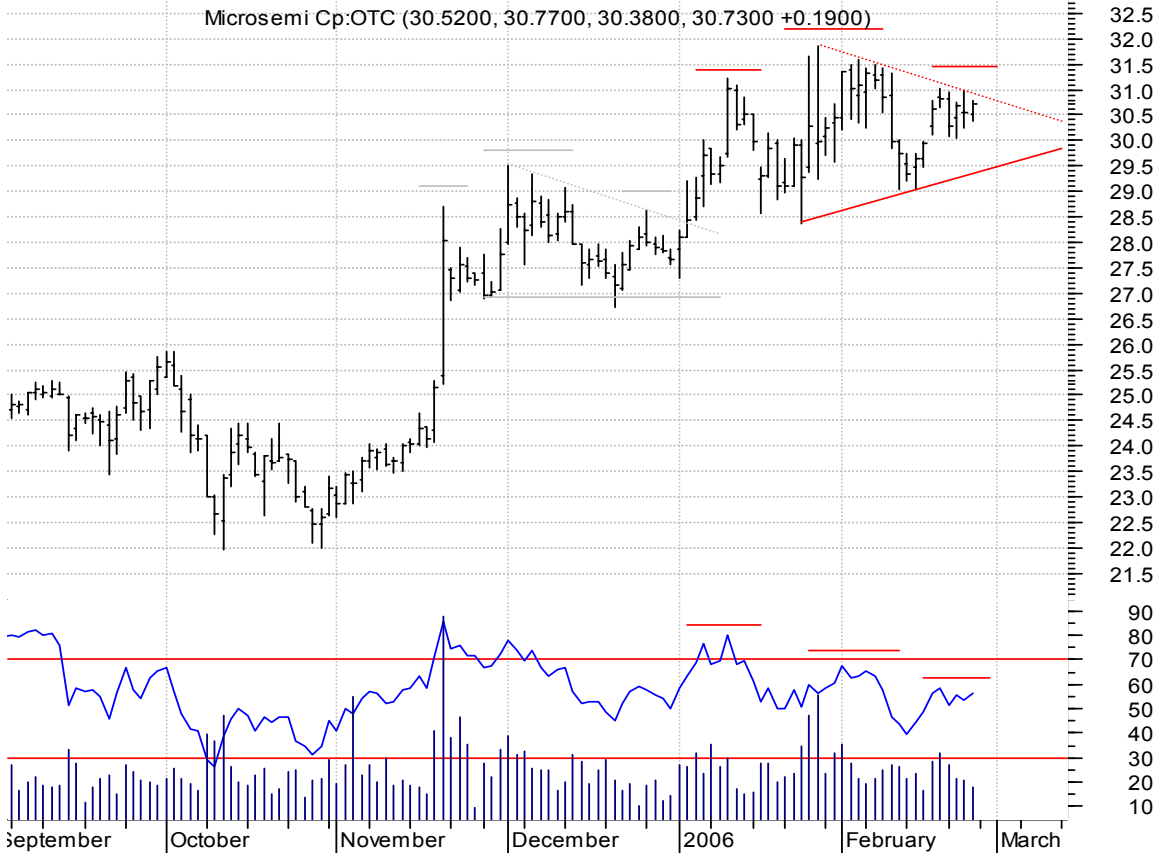


MRTN bullish flagging / buy on upside breakout on increased volume

Marten Transport (22.2500, 22.6700, 21.7600, 22.6300 +0.3900)



**MSCC h. & sh. / 1) sell on downside brkout on increased volume or
 2) buy on upside brkout thru dotted red line on increased volume
 [h. & sh. pattern failures often times make sharp upside brkouts]**



MTW rectangle / buy on upside brkout on increased volume



NTCT symm. tri. / buy on upside breakout thru dotted red line on increased volume

Netscout Systems (6.6200, 6.7500, 6.5000, 6.7400 +0.0800)

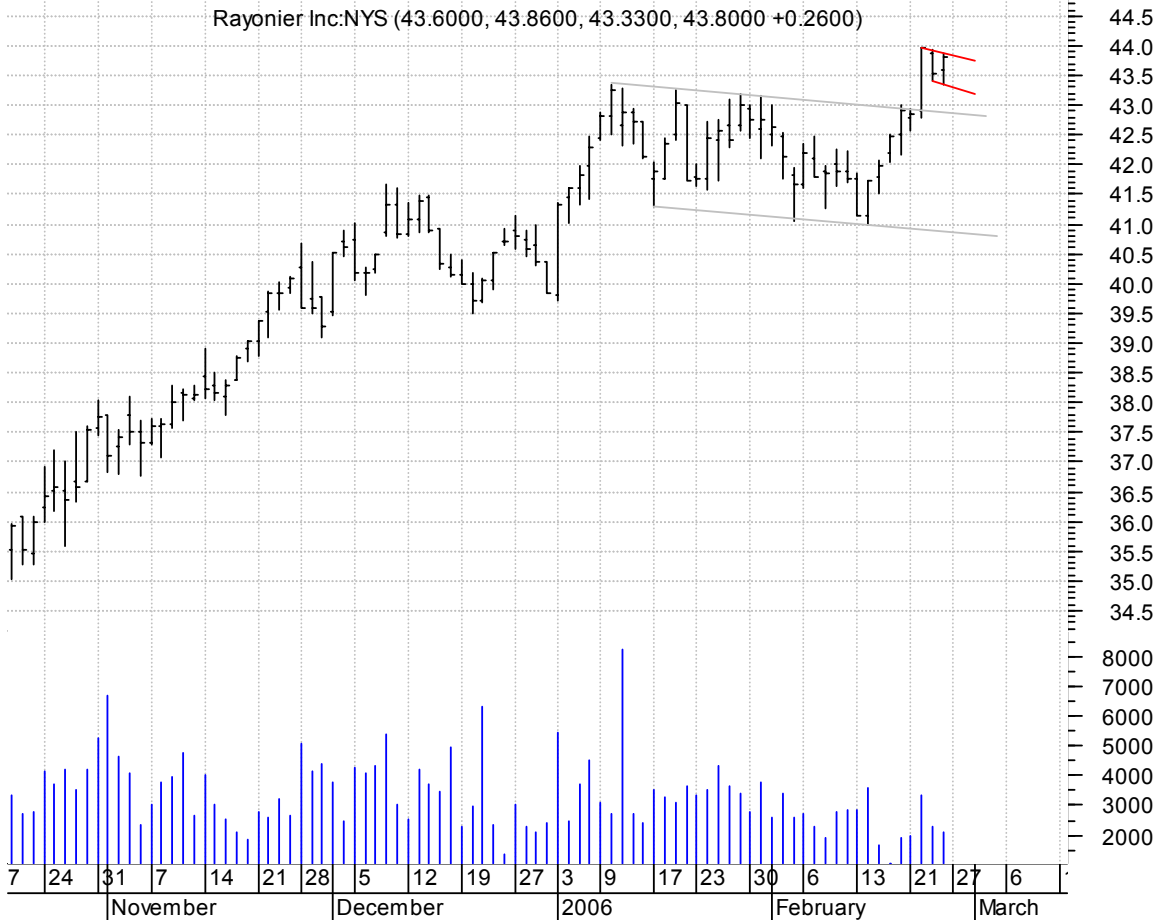


PVH sloppy asc. tri. / buy on upside breakout on increased volume

Phillips-Van Heu (36.6300, 36.8700, 36.1000, 36.8300 +0.0900)



RYN bullish flag (better seen on an intraday chart) / buy on upside brkout on increased volume



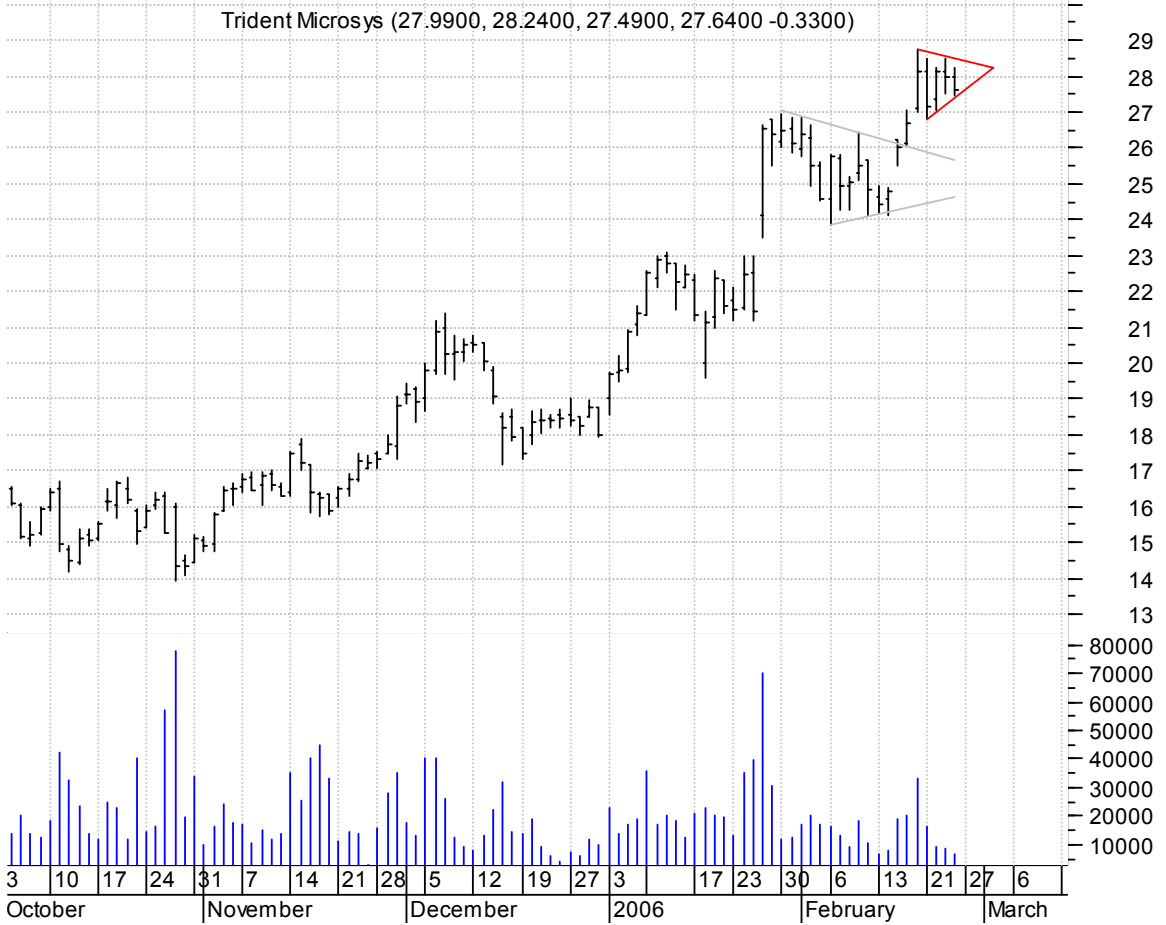
SCST symm. tri. preceded by 'pole-like' move / buy on upside brkout on increased volume



SNHY symm. tri. / buy on upside brkout on increased volume

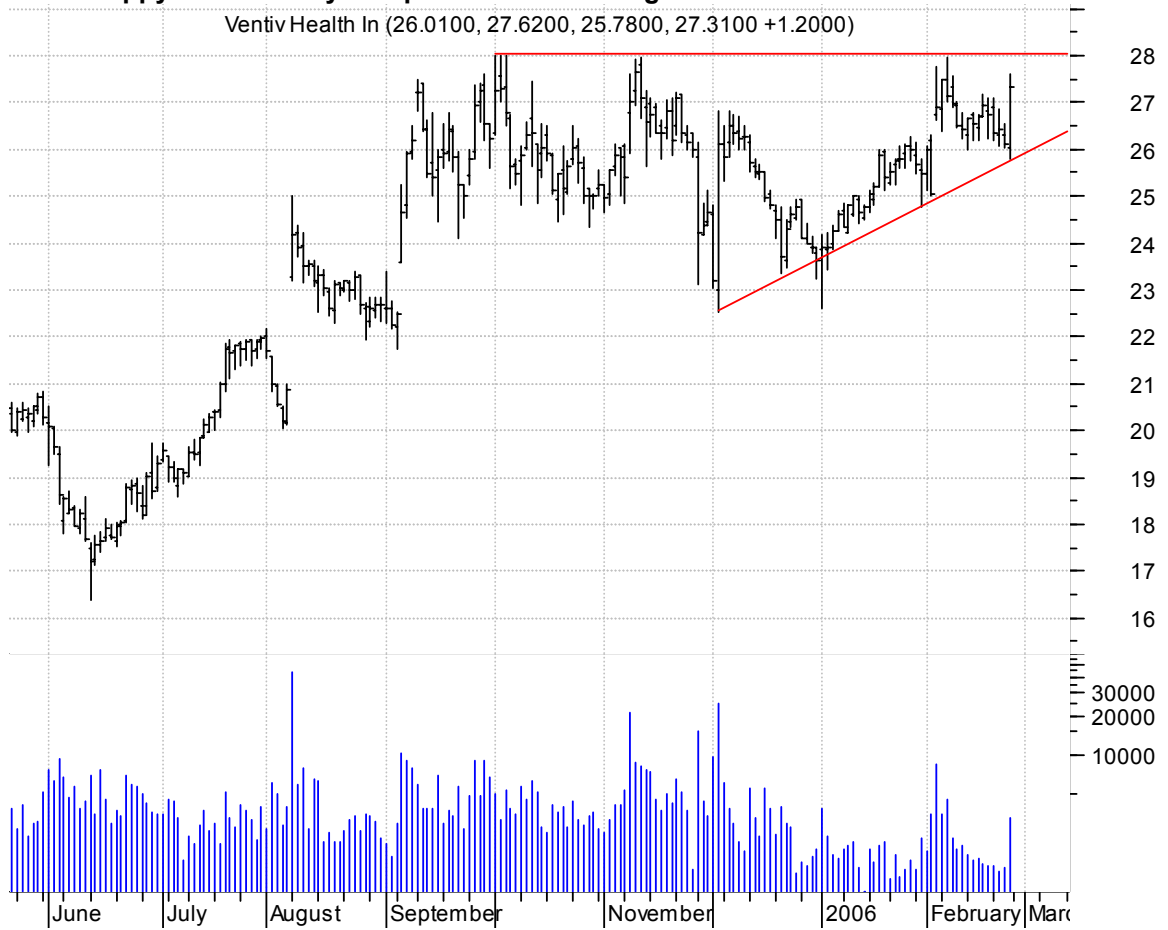


TRID symm. tri. preceded by 'pole-like' move / buy on upside brkout on increased volume



VTIV sloppy asc. tri. / buy on upside brkout on larger than normal volume

Ventiv Health In (26.0100, 27.6200, 25.7800, 27.3100 +1.2000)



chartpatterns.com

Chart Pattern Analysis for Timing the Markets

KMatras@aol.com