

**ALY symm. tri. / buy on upside brkout thru dotted red line on increased volume**

Allis Chalmers E (17.7000, 18.2400, 17.4100, 17.9500 +0.3500)

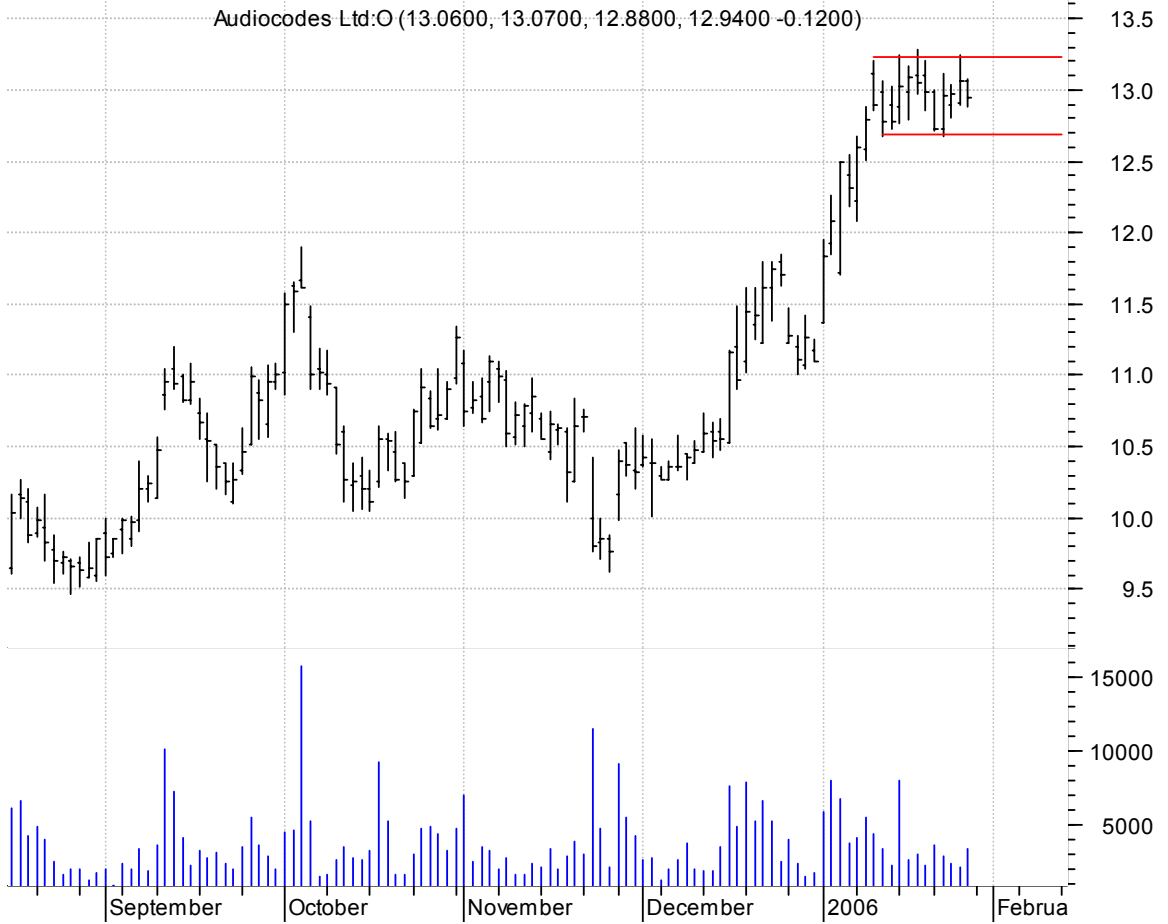


**AMT asc. tri. / buy on upside brkout on increased volume**

American Tower C (29.2300, 29.5000, 29.0500, 29.4100 +0.2300)



**AUDC rectangle / buy on upside brkout on increased volume**



**BIVN sloppy bullish flag / buy on upside brkout on larger than normal volume**



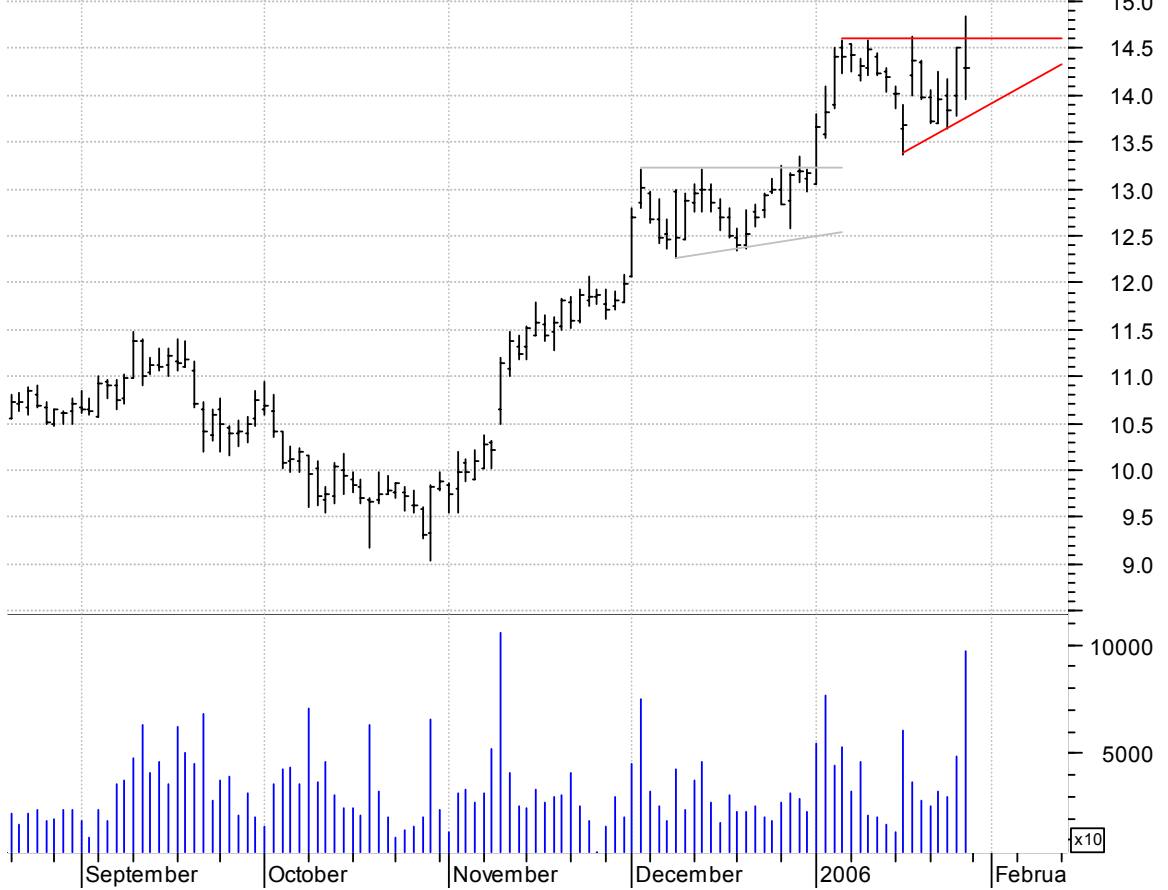
**GCOM symm. tri. / buy on upside breakout on increased volume**

Globecomm System (7.4500, 7.5500, 7.2200, 7.4900 +0.0500)



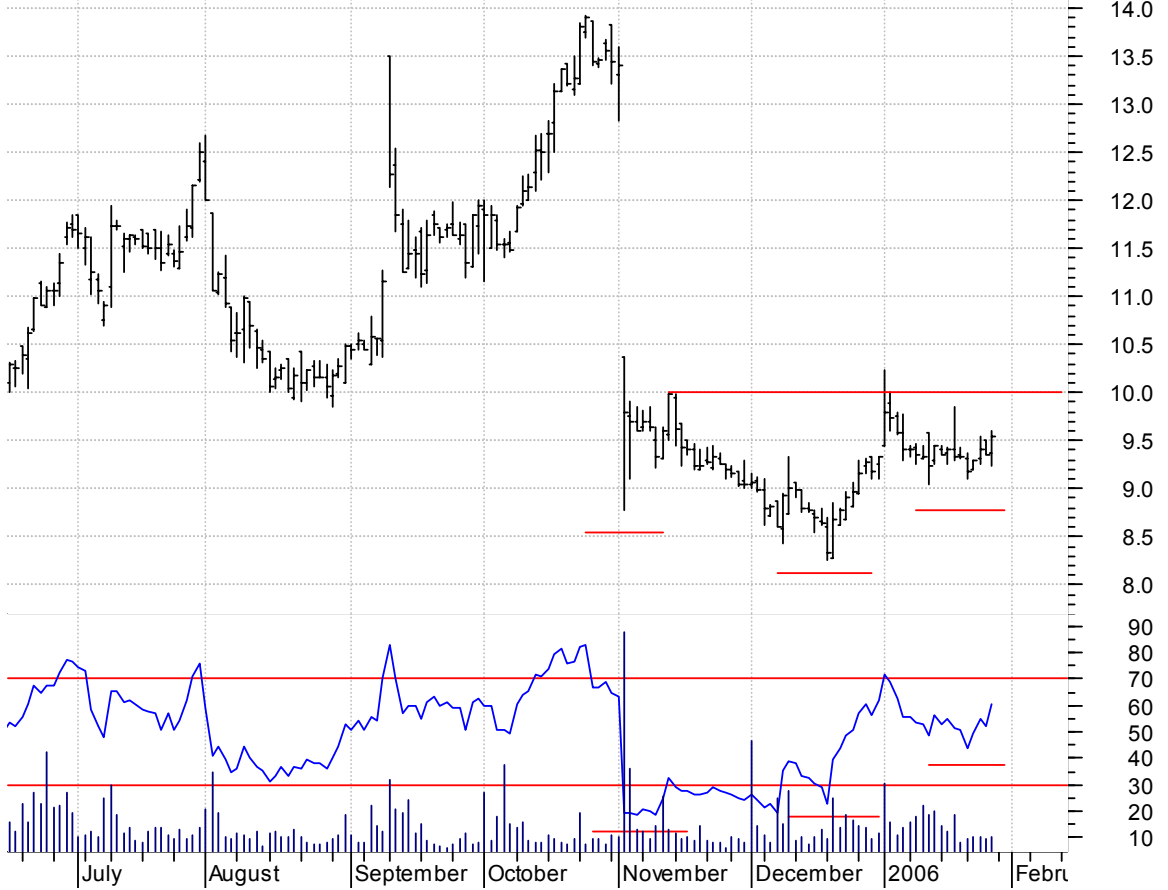
**IDTI asc. tri. / buy on upside breakout on larger than normal volume**

Integrated Devic (14.3000, 14.8400, 13.9500, 14.3000 -0.2100)



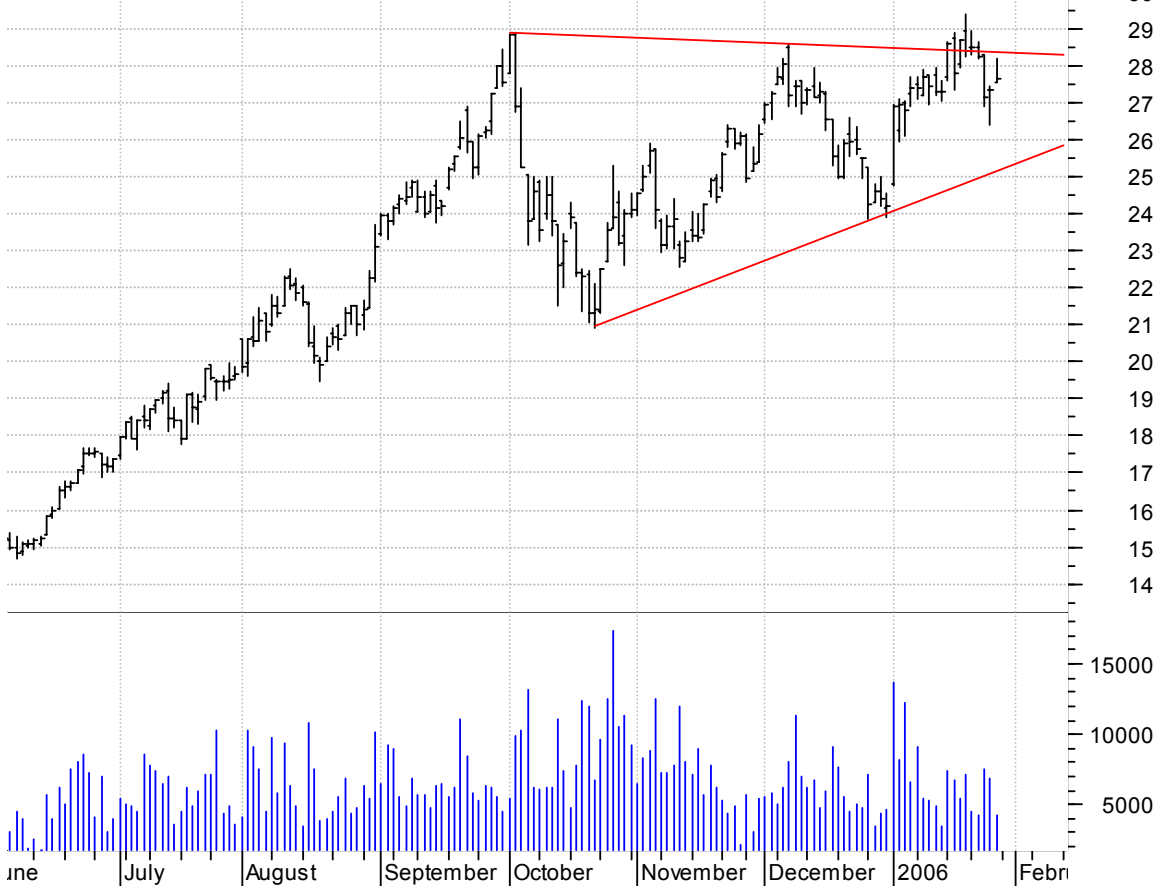
**INTX inv. h. & sh. / buy on upside breakout on increased volume**

INTERSECTIONS IN (9.3800, 9.6000, 9.2400, 9.5500 +0.2000)



**KCS symm. tri. / buy on upside breakout on increased volume**

KCS Energy Inc:N (27.5300, 28.1600, 27.5300, 27.6300 +0.2700)



**LI rectangle preceded by 'pole-like' move / buy on upside brkout on increased volume**

LIDLAW INTL INC (27.2800, 27.6500, 27.1000, 27.4900 +0.1400)



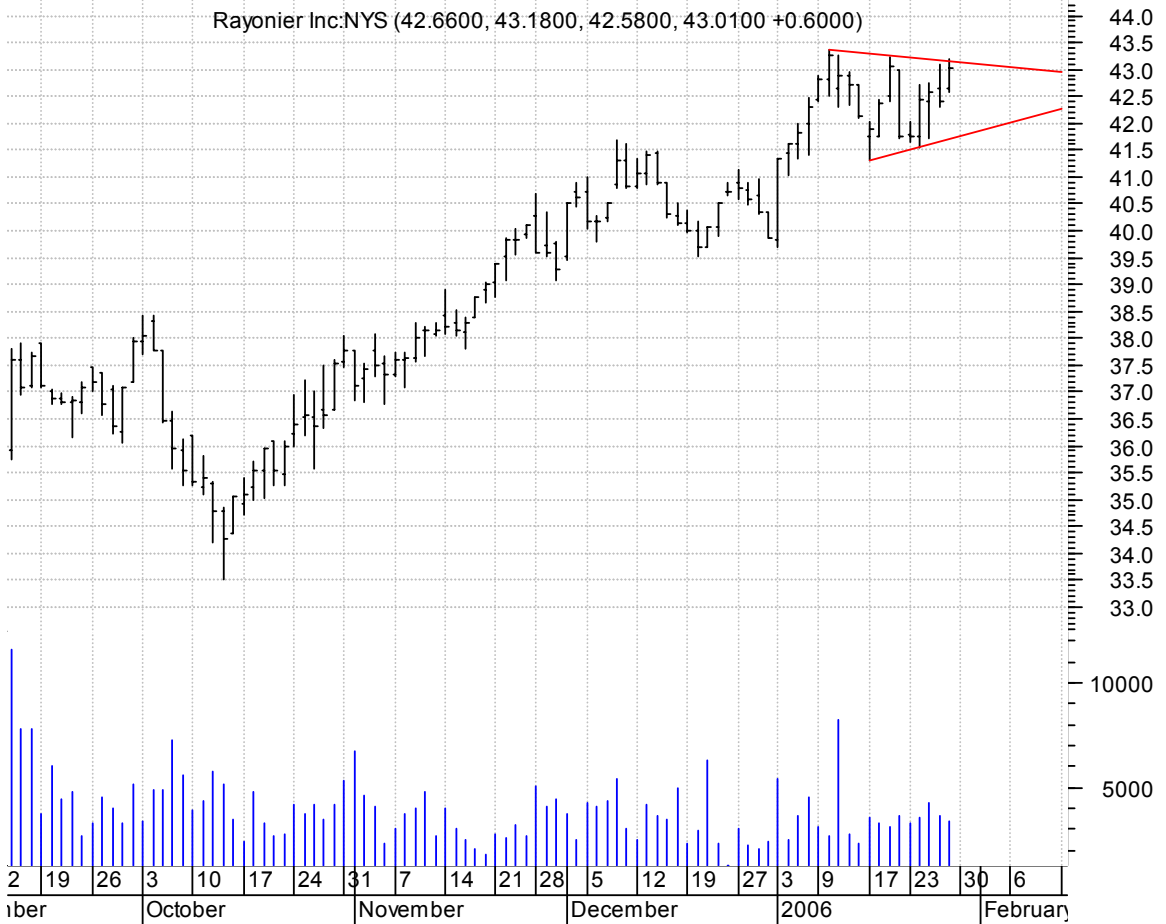
**NSS sloppy bullish flagging / buy on upside brkout on increased volume**

NS Group Inc:NYS (43.1000, 44.7900, 43.1000, 44.1000 +1.4300)



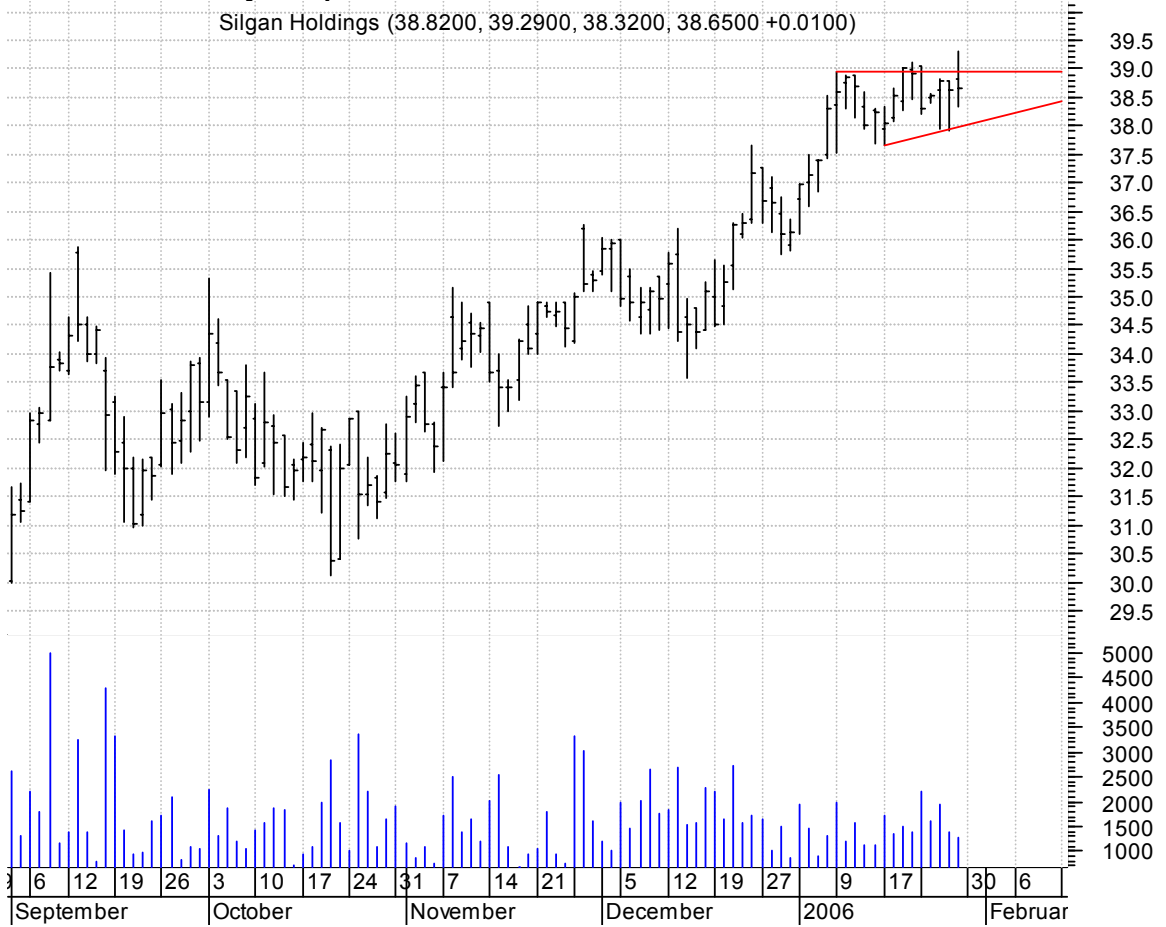
**RYN symm. tri. / buy on upside breakout on increased volume**

Rayonier Inc.:NYS (42.6600, 43.1800, 42.5800, 43.0100 +0.6000)

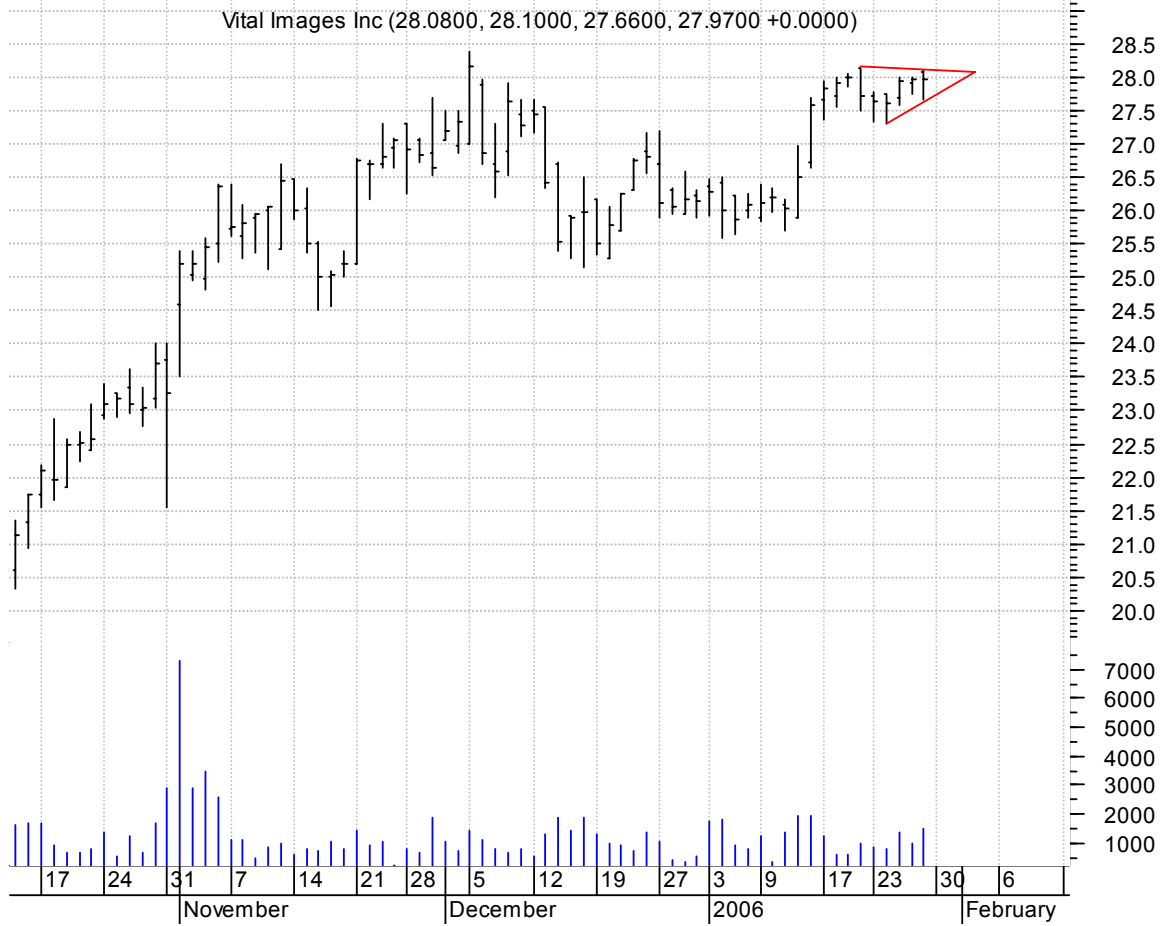


**SLGN asc. tri. / buy on upside breakout on increased volume**

Silgan Holdings (38.8200, 39.2900, 38.3200, 38.6500 +0.0100)



**VTAL symm. tri. / buy on upside brkout on increased volume**



**chartpatterns.com**  
Chart Pattern Analysis for Timing the Markets

[KMatras@aol.com](mailto:KMatras@aol.com)