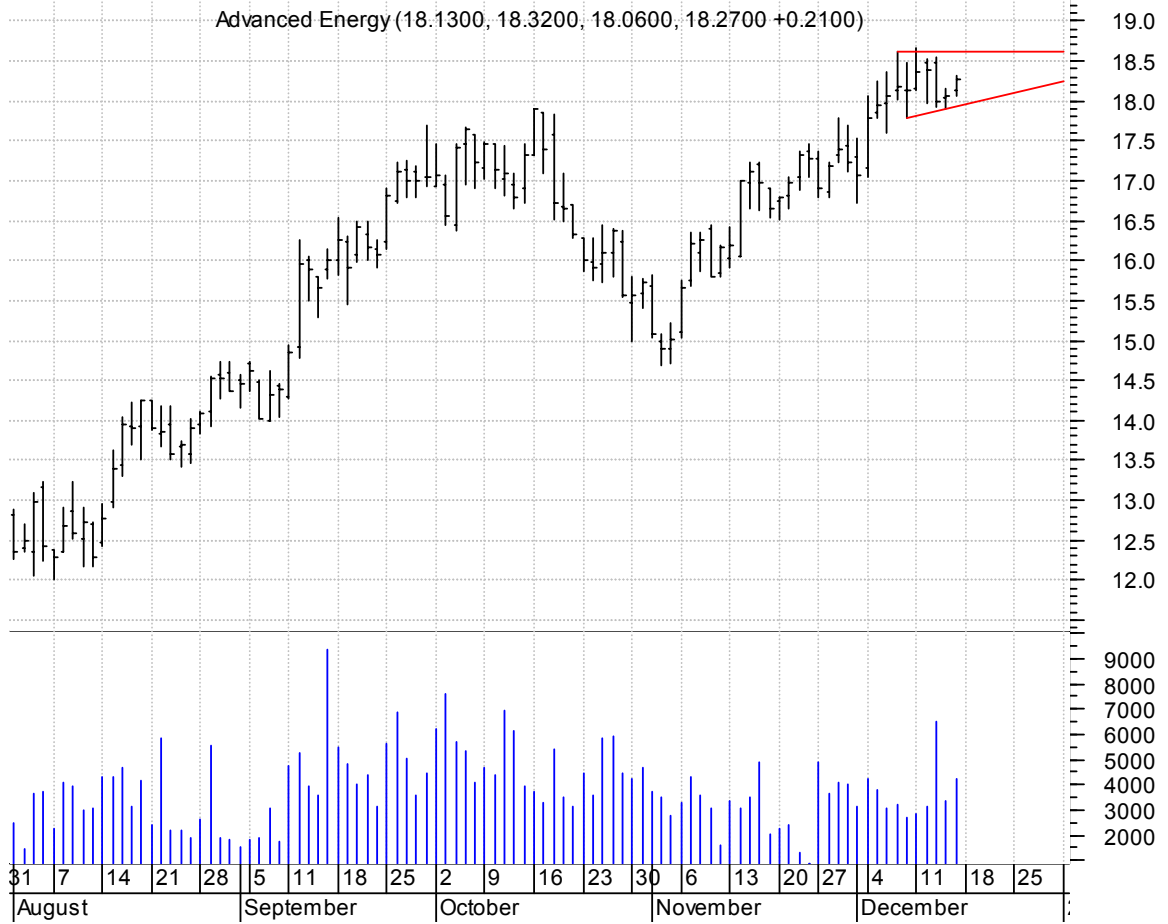


**AEIS asc. tri. / buy on upside brkout on increased volume**



**ALSK symm. tri. / buy on upside brkout on increased volume**



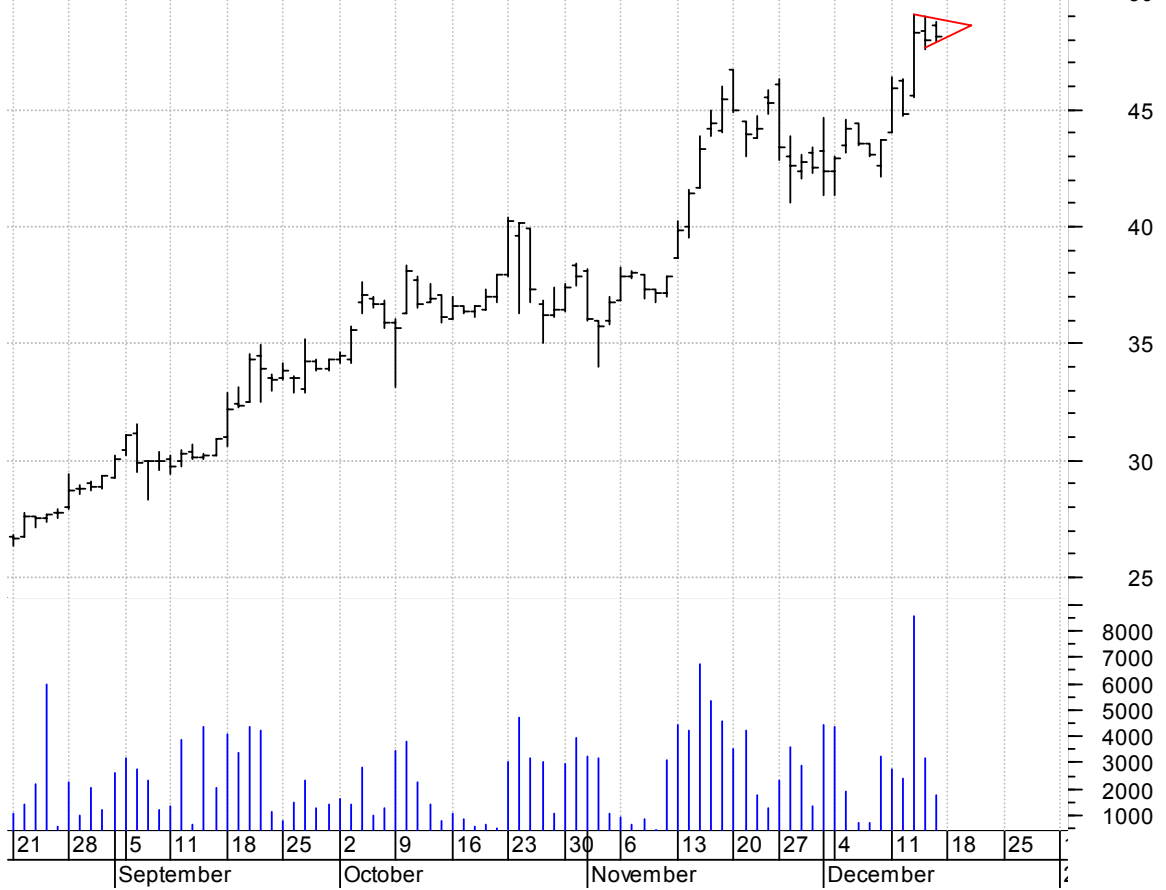
**BW symm. tri. / buy on upside breakout thru dotted red line on increased volume**

Brush Engineered (36.0000, 36.8200, 35.9100, 36.2000 +0.3000)



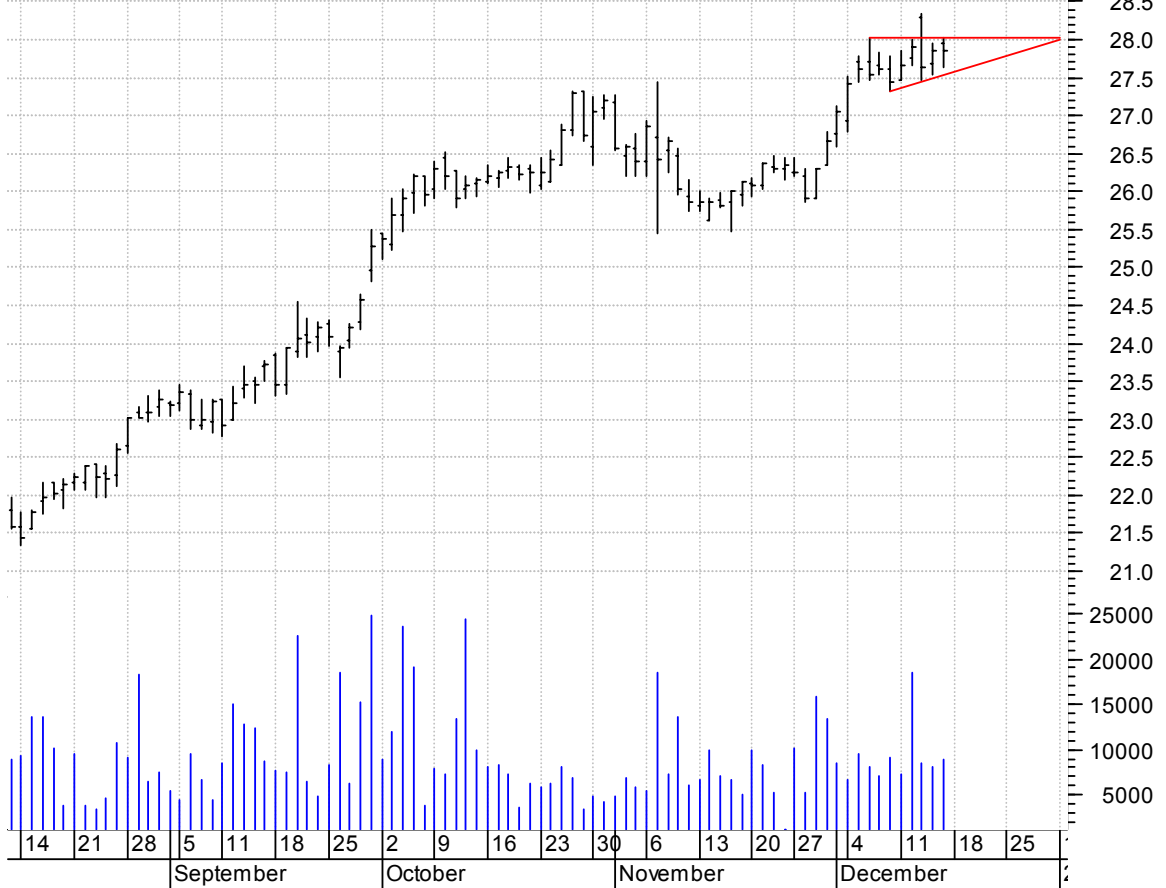
**CPA bull pennant (better seen on an intraday chart) / buy on upside breakout on increased volume**

COPA HOLDINGS S (48.6400, 48.7500, 47.9000, 48.1300 +0.1400)



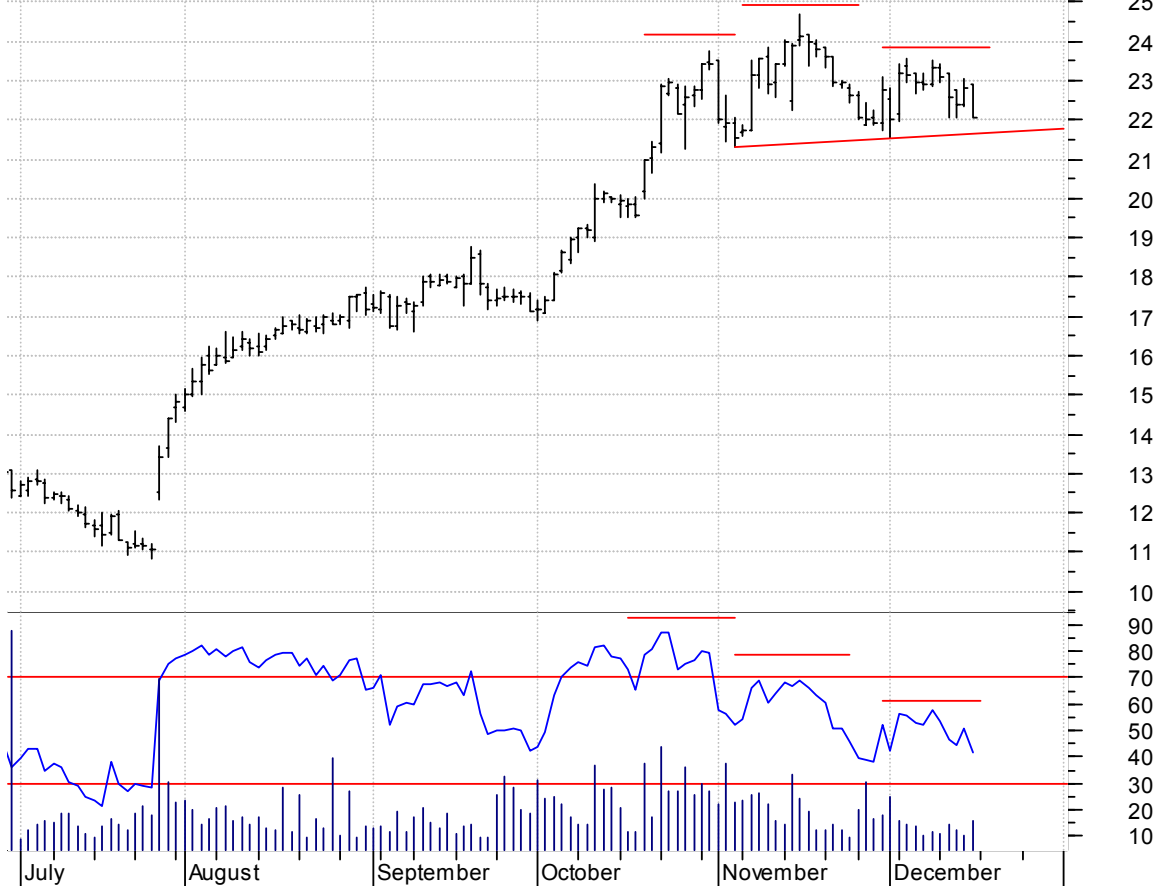
**CSE sloppy asc. tri. (discounting spike day) / buy on upside brkout on increased volume**

CAPITALSOURCE IN (27.9500, 28.0200, 27.6400, 27.8600 +0.0000)



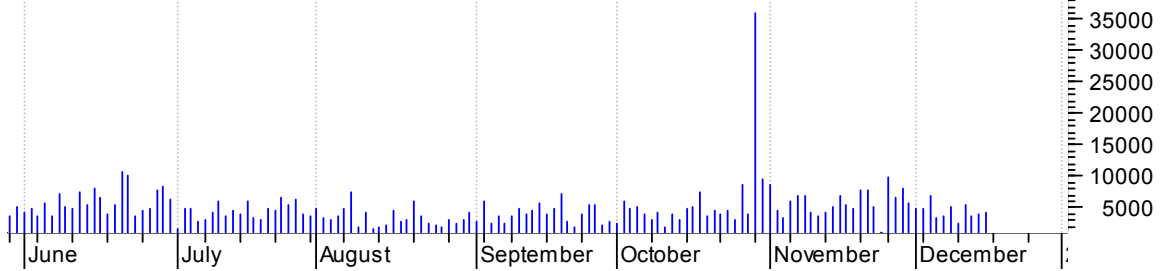
**CVNS h. & sh. / sell on downside brkout on increased volume**

Covansys Corp:OT (22.9000, 22.9000, 22.0400, 22.0500 -0.7400)



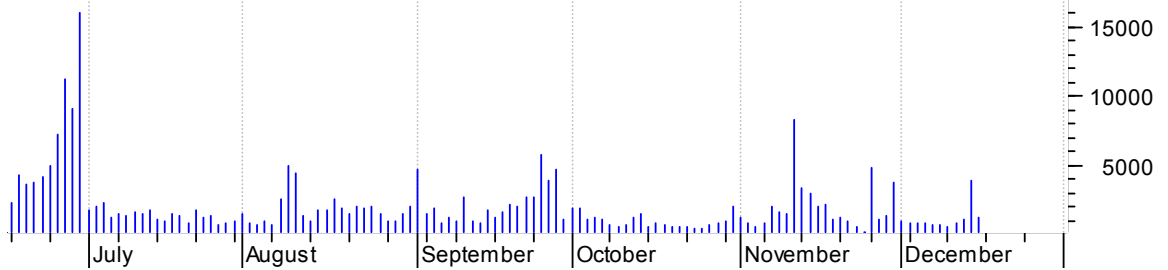
**DBD falling wedge preceded by 'pole-like' move / buy on upside brkout on increased volume**

Diebold Inc.NYSE (45.4500, 45.5300, 45.0200, 45.1800 -0.1200)

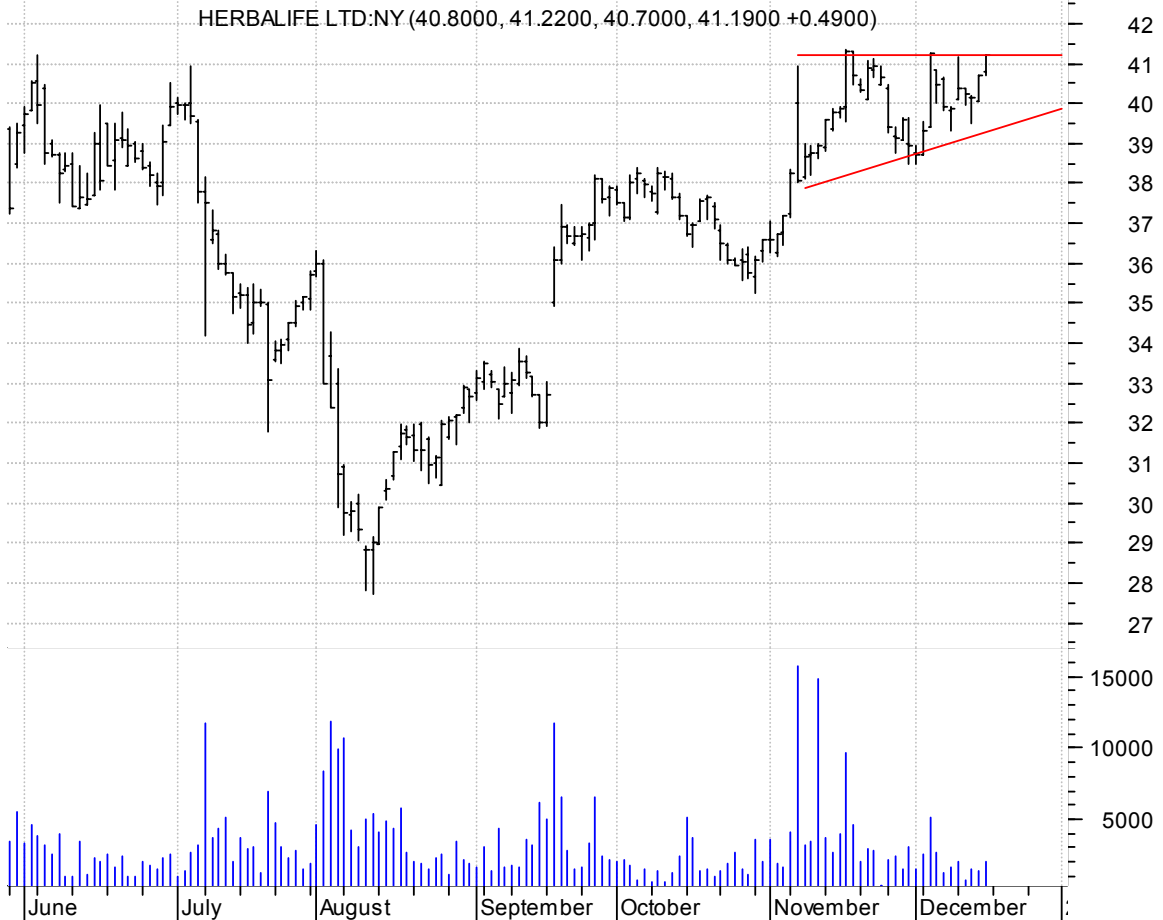


**FSYS symm. tri. / buy on upside brkout on increased volume**

Fuel Systems Sol (18.7600, 18.9300, 18.5000, 18.8100 +0.0400)



**HLF imperfect yet unmistakable asc. tri. / buy on upside breakout on increased volume**



**ISIS falling wedge preceded by 'pole-like' move / buy on upside breakout on increased volume**



**JOYG symm. tri. / buy on upside brkout on increased volume**

Joy Global Inc:O (44.7300, 45.0100, 43.4800, 44.2300 -0.3300)



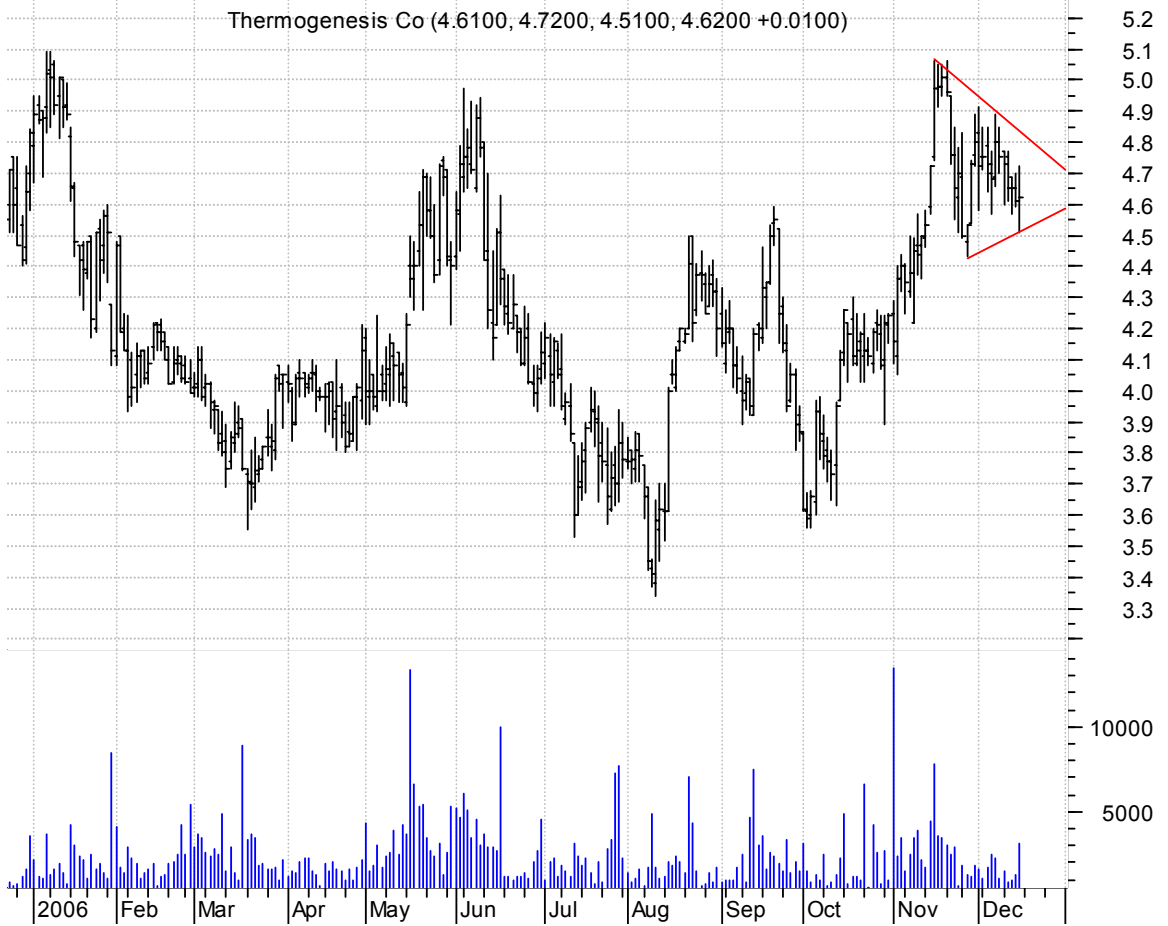
**KNOL bull pennant / buy on upside brkout on increased volume**

KNOLOGY INC:OTC (11.0500, 11.0500, 10.8600, 10.9300 -0.0900)



**KOOL symm. tri. / buy on upside brkout on increased volume**

Thermogenesis Co (4.6100, 4.7200, 4.5100, 4.6200 +0.0100)



**LHCG asc. tri. / buy on upside brkout on increased volume**

LHC GROUP INC:OT (28.9500, 29.1000, 28.4100, 28.5700 -0.2400)



**MM symm. tri. (better seen on an intraday chart) / buy on upside brkout on increased volume**



**MO asc. tri. / buy on upside brkout on increased volume**





**MRK symm. tri. / buy on upside breakout on increased volume**

Merck & Co Inc:N (43.7100, 44.1100, 43.4200, 44.0000 +0.4000)



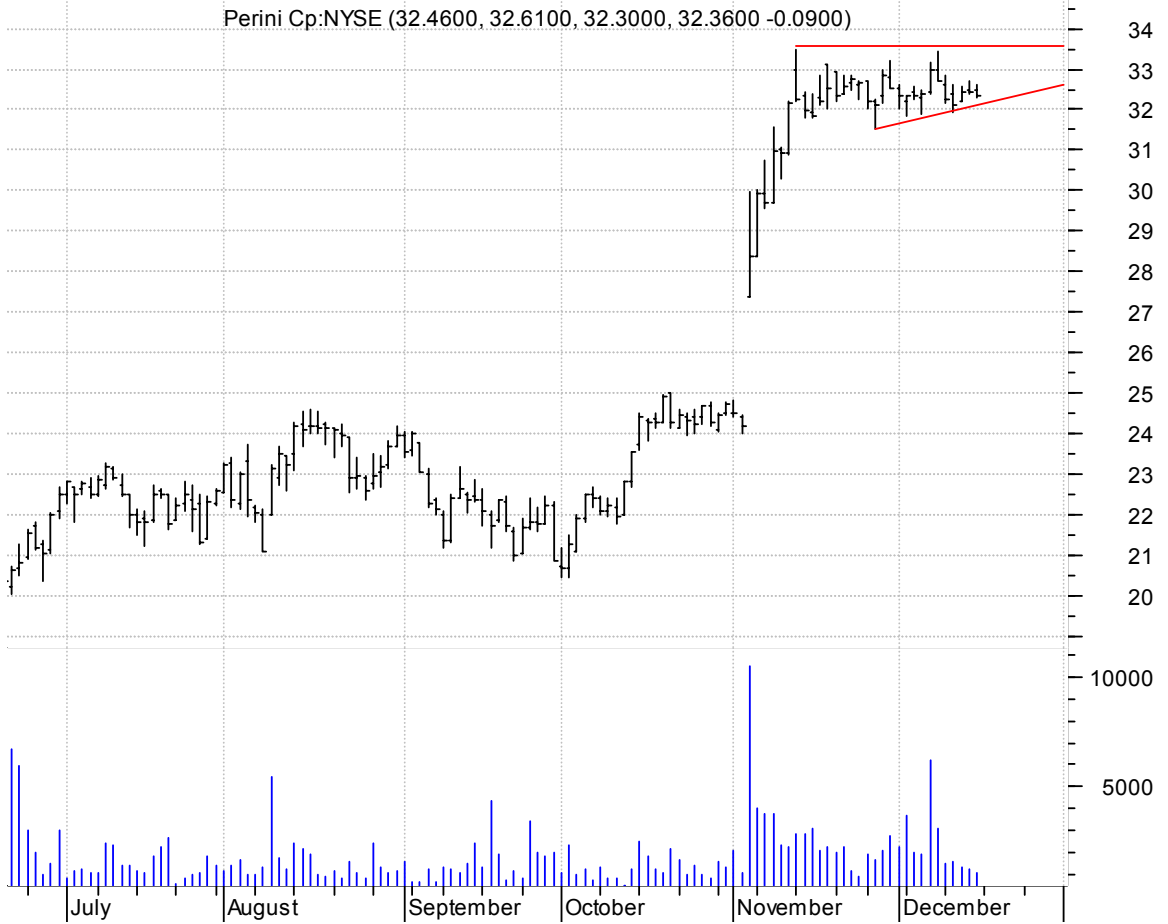
**NTG symm. tri. / buy on upside breakout on increased volume**

Natco Group Inc: (35.9300, 36.4700, 35.8500, 35.9400 +0.0100)



**PCR asc. tri. preceded by 'pole-like' move / buy on upside brkout on increased volume**

Perini Cp:NYSE (32.4600, 32.6100, 32.3000, 32.3600 -0.0900)



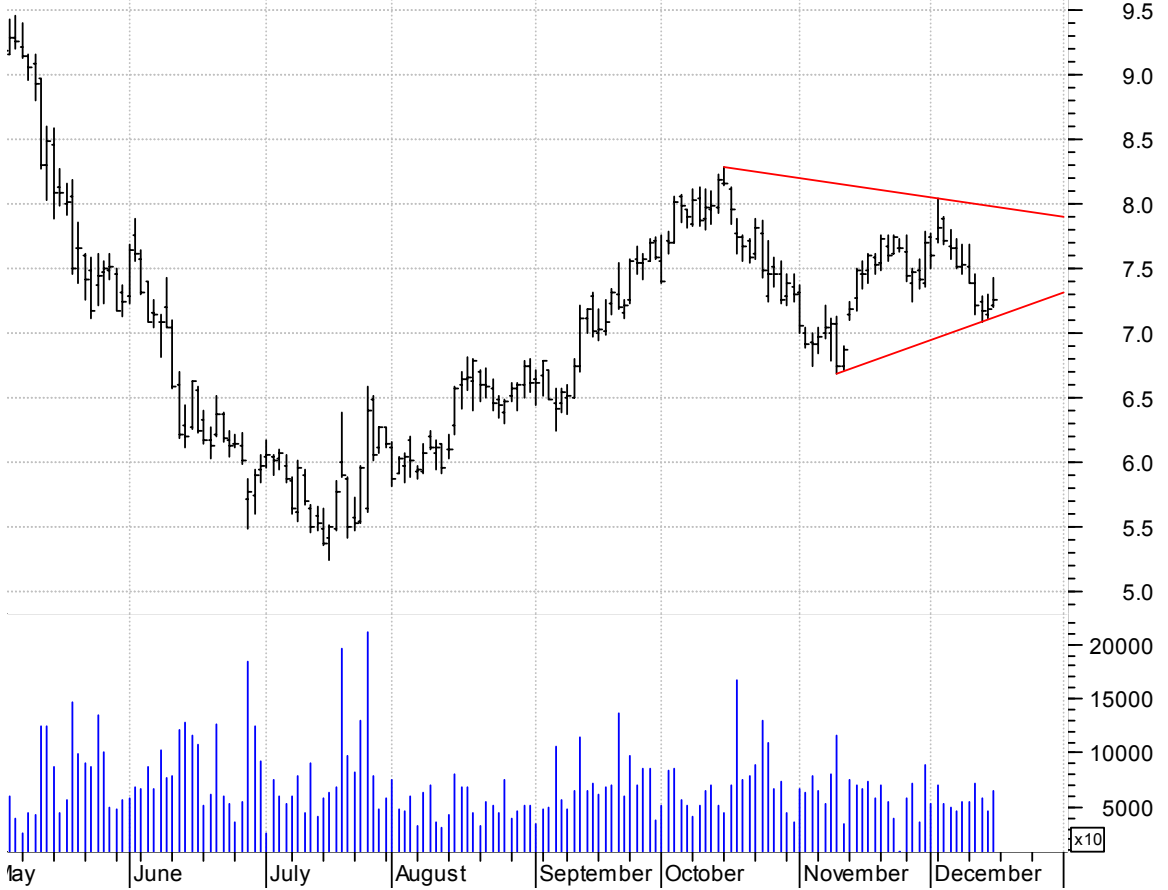
**PTMK symm. tri. / buy on upside brkout on larger than normal volume**

PATHMARK STORES (10.9500, 11.0100, 10.8500, 10.9200 +0.0200)



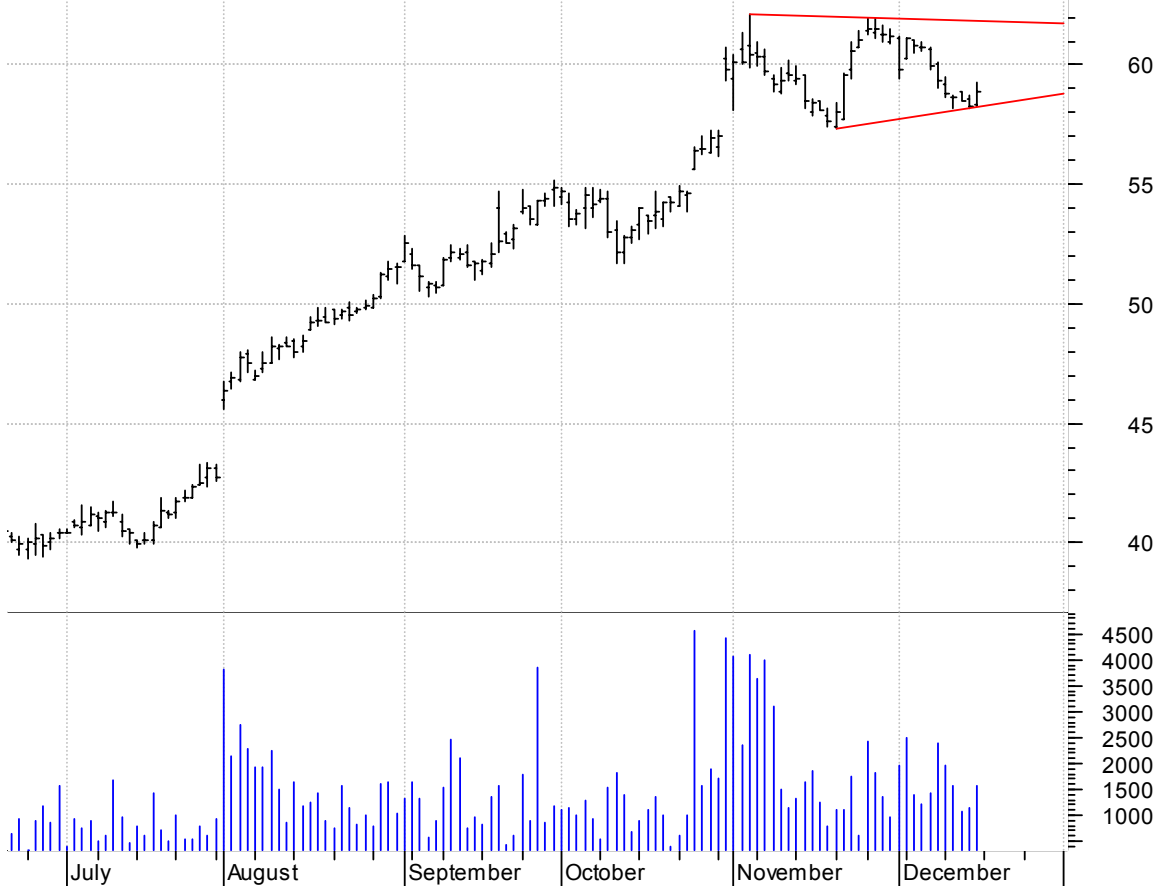
**RFMD symm. tri. / buy on upside brkout on increased volume**

RF Micro Devices (7.2100, 7.4300, 7.2000, 7.2600 +0.0800)



**RG symm. tri. / buy on upside brkout on larger than normal volume**

Rogers Communica (58.3700, 59.2600, 58.2700, 58.8600 +0.6100)



**ROLL symm. tri. / buy on upside brkout on increased volume**

RBC BEARINGS INC (28.5500, 29.0400, 28.5500, 28.9400 +0.3800)



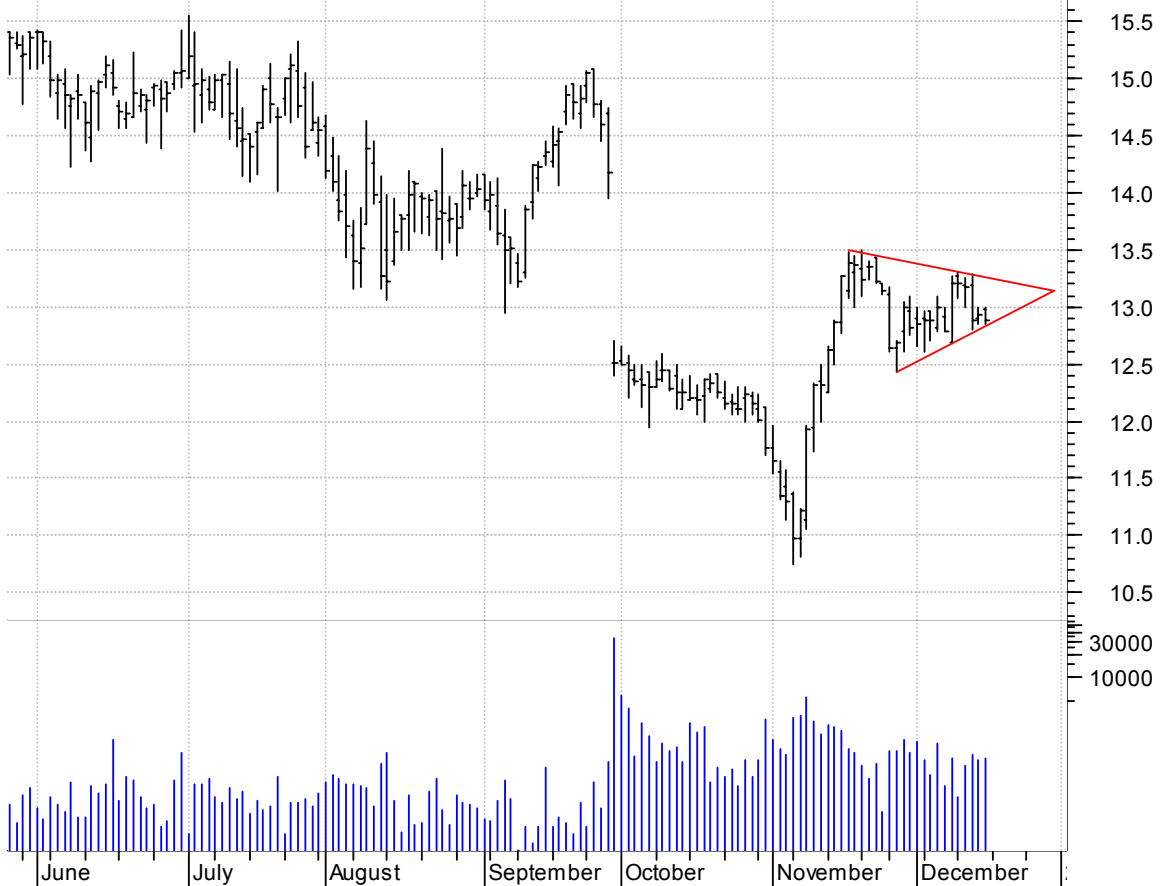
**SHLD symm. tri. / buy on upside brkout on increased volume**

Sears Holding:OT (176.700, 177.490, 174.300, 175.090 -0.8500)



**SMHG symm. tri. / buy on upside brkout on increased volume**

Snders Morris Ha (12.9800, 13.0000, 12.8500, 12.8900 -0.0400)

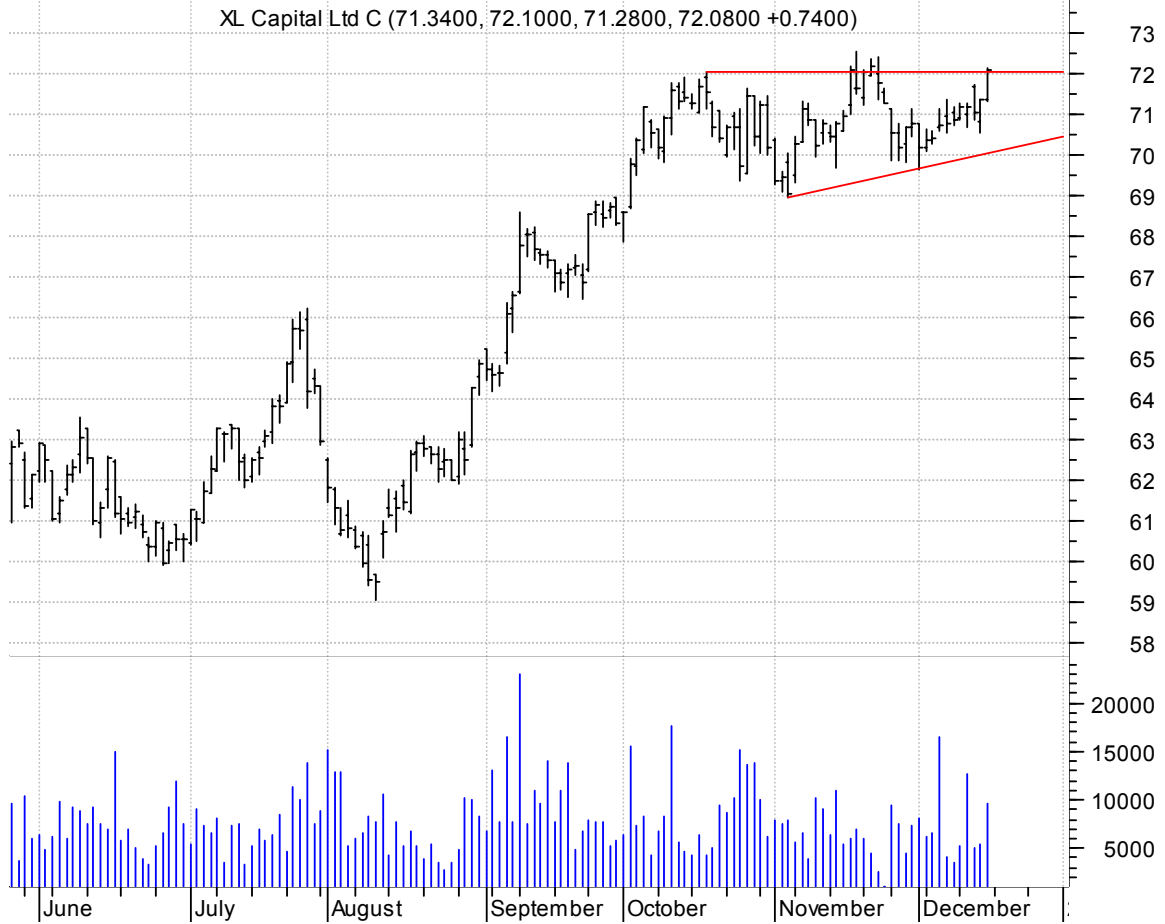


**WFR symm. tri. brkout / buy on upside brkout thru dotted red line on increased volume**

MEMC Electronic (42.9900, 43.8800, 42.9300, 43.5500 +0.7300)



**XL asc. tri. / buy on follow-thru brkout on larger than normal volume (use bottom of pattern as a failure)**



**chartpatterns.com**

Chart Pattern Analysis for Timing the Markets

[KMatras@aol.com](mailto:KMatras@aol.com)