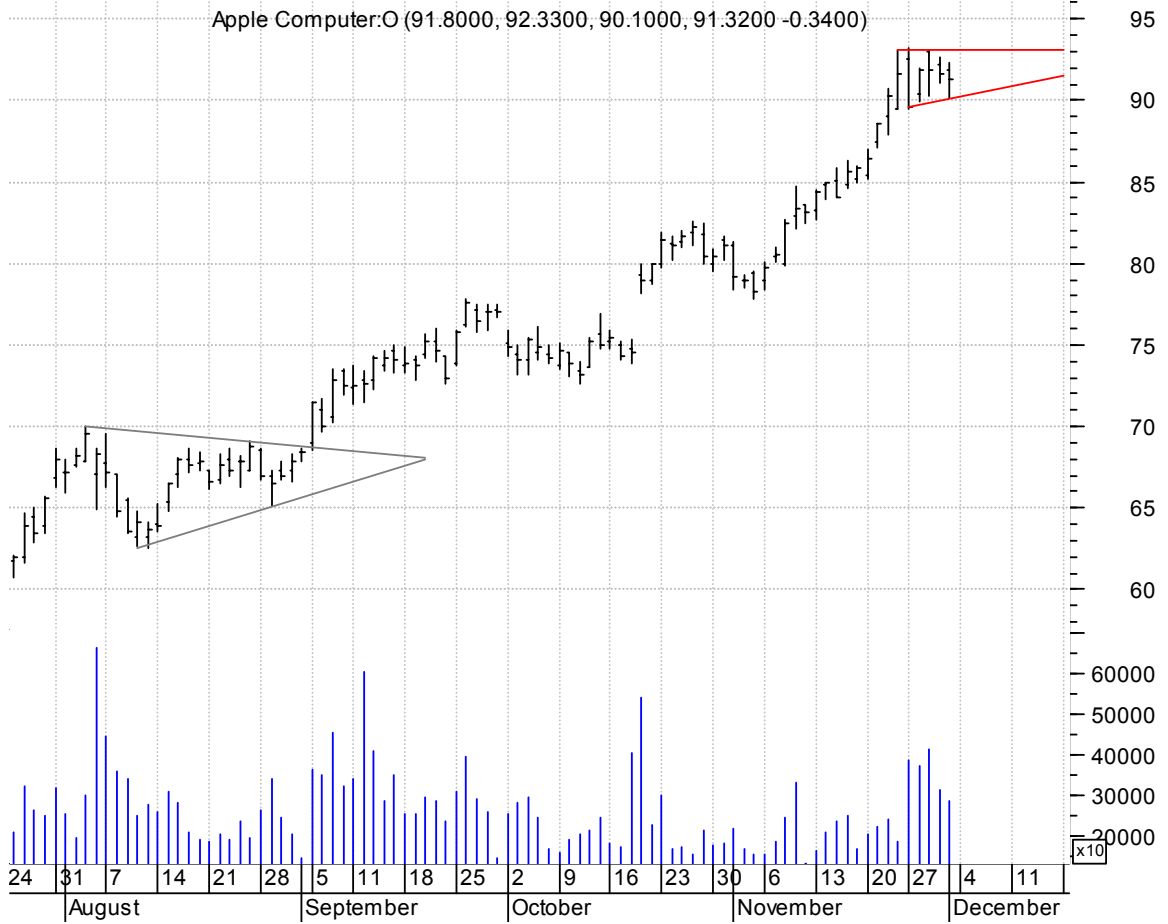


AAPL asc. tri. preceded by 'pole-like' move / buy on upside brkout on increased volume



ADVNB bull pennant / buy on upside bkout on increased volume



APH symm. tri. / buy on upside breakout on increased volume

Amphenol Cp:NYSE (68.6600, 68.8600, 66.9500, 68.0500 -0.0800)



BDC rectangle / buy on upside breakout on increased volume

Belden CDT:NYSE (39.6200, 39.7900, 38.6000, 39.2000 -0.6100)



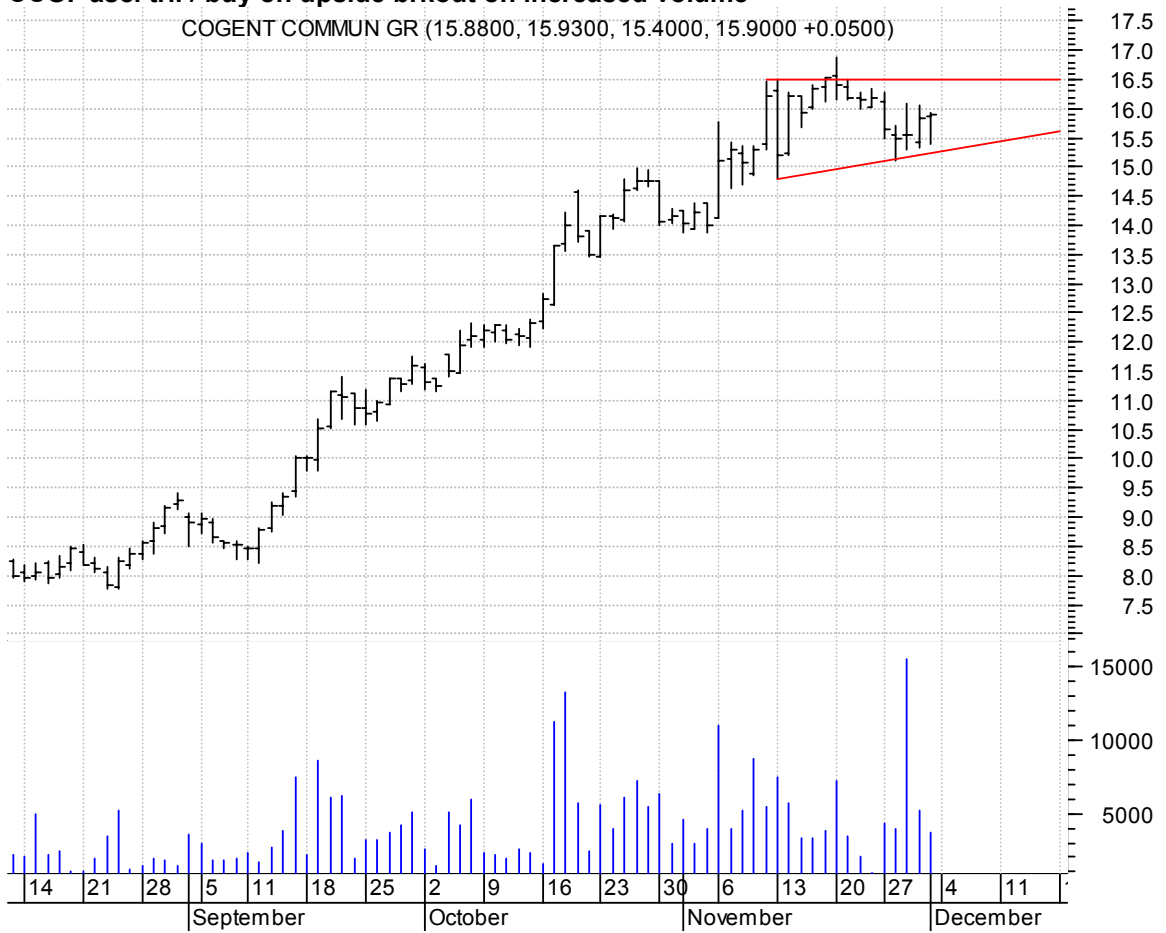
BRLI asc. tri. / buy on upside brkout on increased volume

Bio Reference La (24.4800, 24.7300, 24.2000, 24.5600 +0.1700)



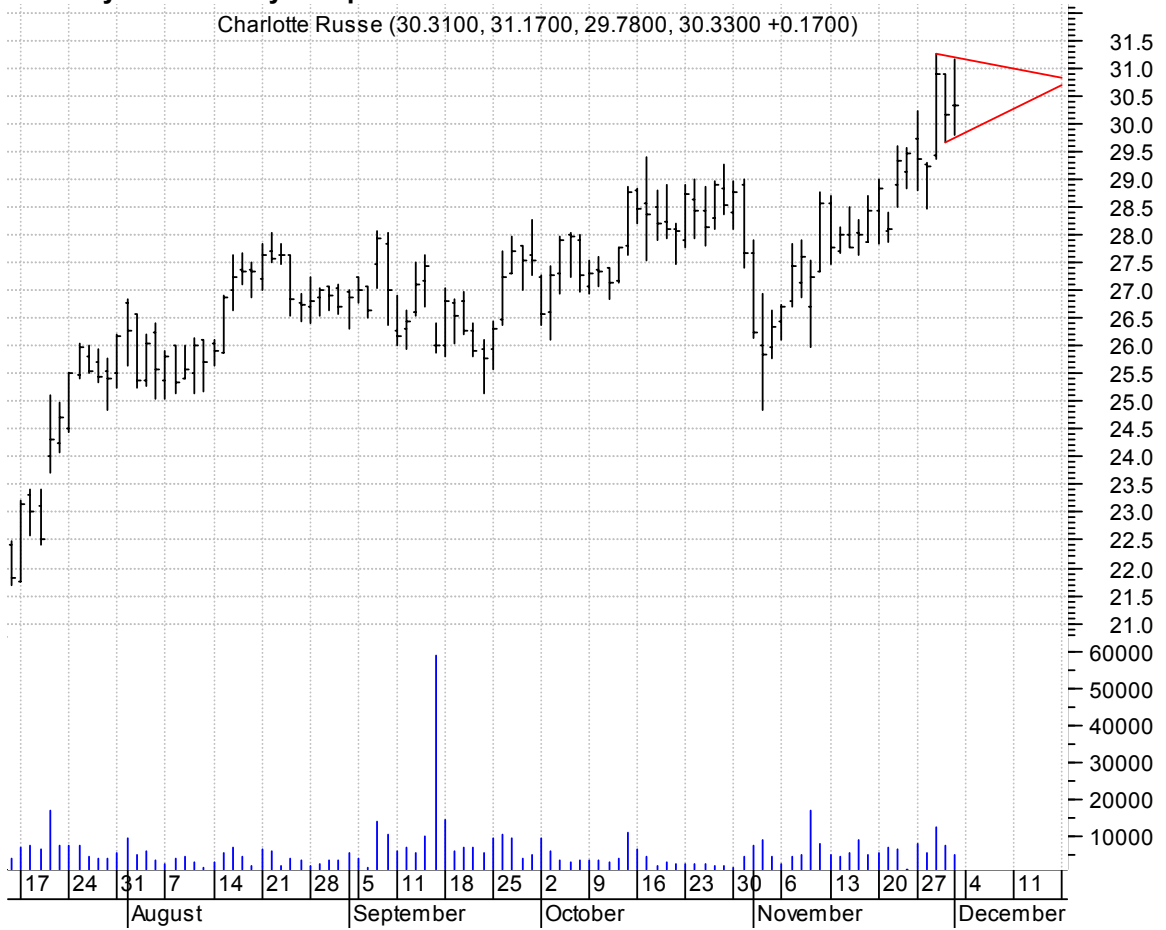
CCOI asc. tri. / buy on upside brkout on increased volume

COGENT COMMUN GR (15.8800, 15.9300, 15.4000, 15.9000 +0.0500)



CHIC symm. tri. / buy on upside brkout on increased volume

Charlotte Russe (30.3100, 31.1700, 29.7800, 30.3300 +0.1700)



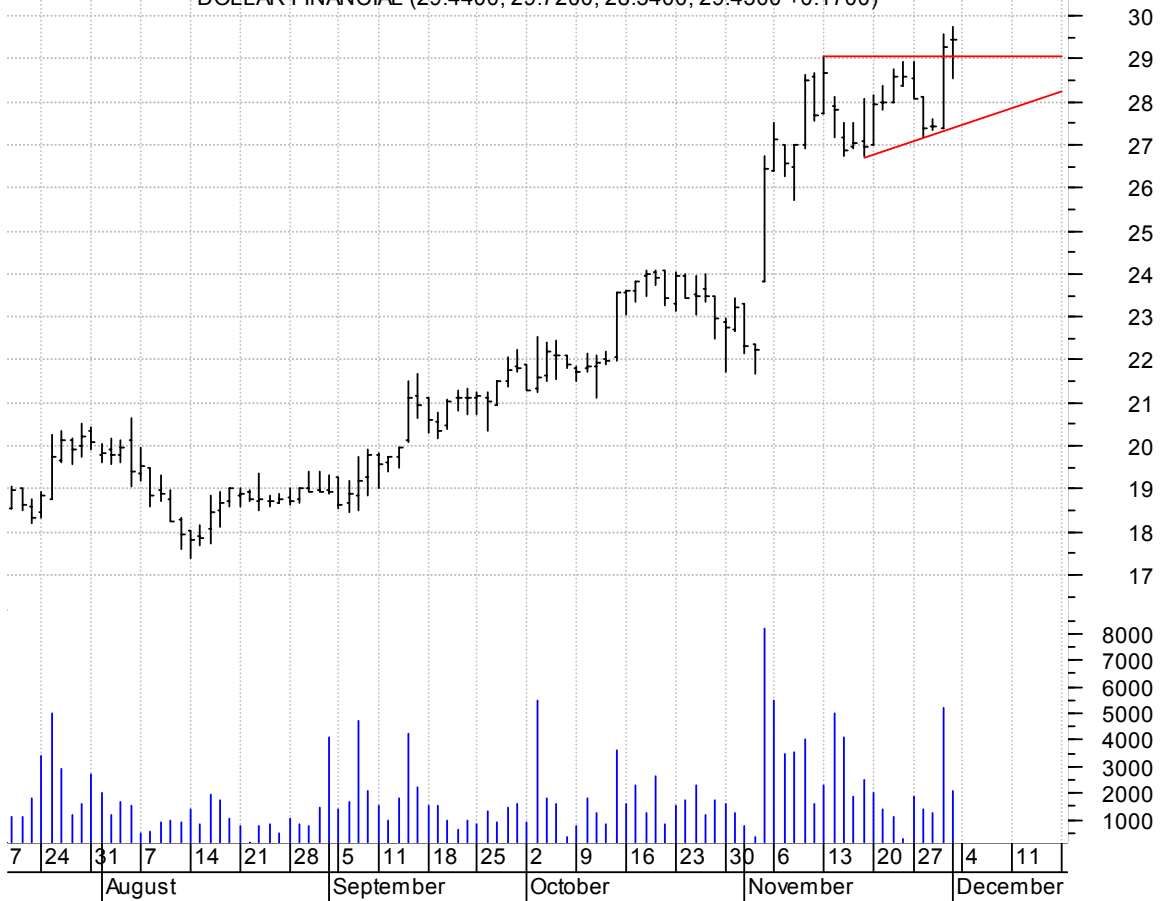
DCEL symm. tri. / buy on upside brkout on increased volume

Dobson Commun Cp (8.6800, 8.7800, 8.3300, 8.4600 -0.1900)



DLLR asc. tri. brkout (preceded by 'pole-like' move) / buy and use the asc. trendline as a failure point

DOLLAR FINANCIAL (29.4400, 29.7200, 28.5400, 29.4300 +0.1700)



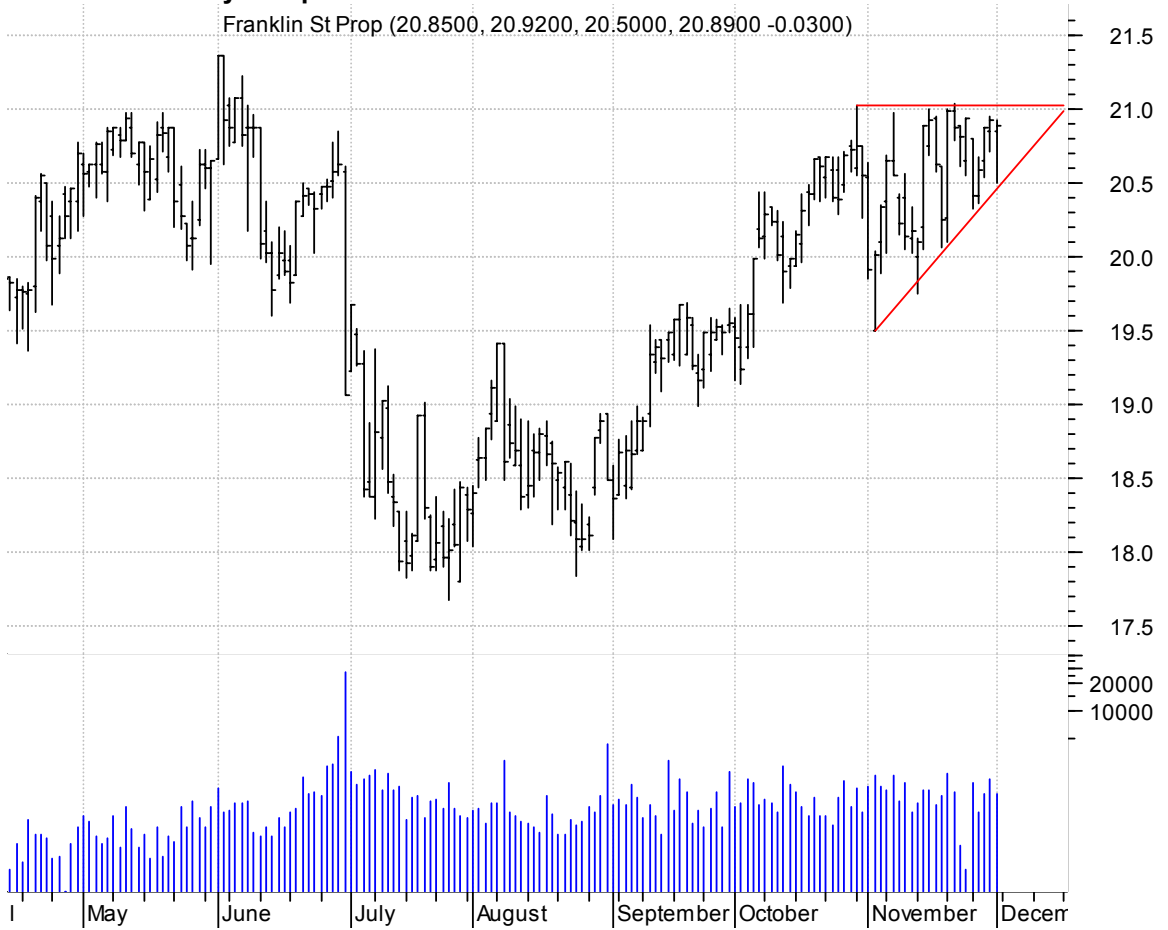
DTPI symm. tri. / buy on upside brkout on increased volume

Diamond Mgt & Te (11.0700, 11.2200, 10.9400, 10.9900 -0.1600)



FSP asc. tri. / buy on upside breakout on increased volume

Franklin St Prop (20.8500, 20.9200, 20.5000, 20.8900 -0.0300)



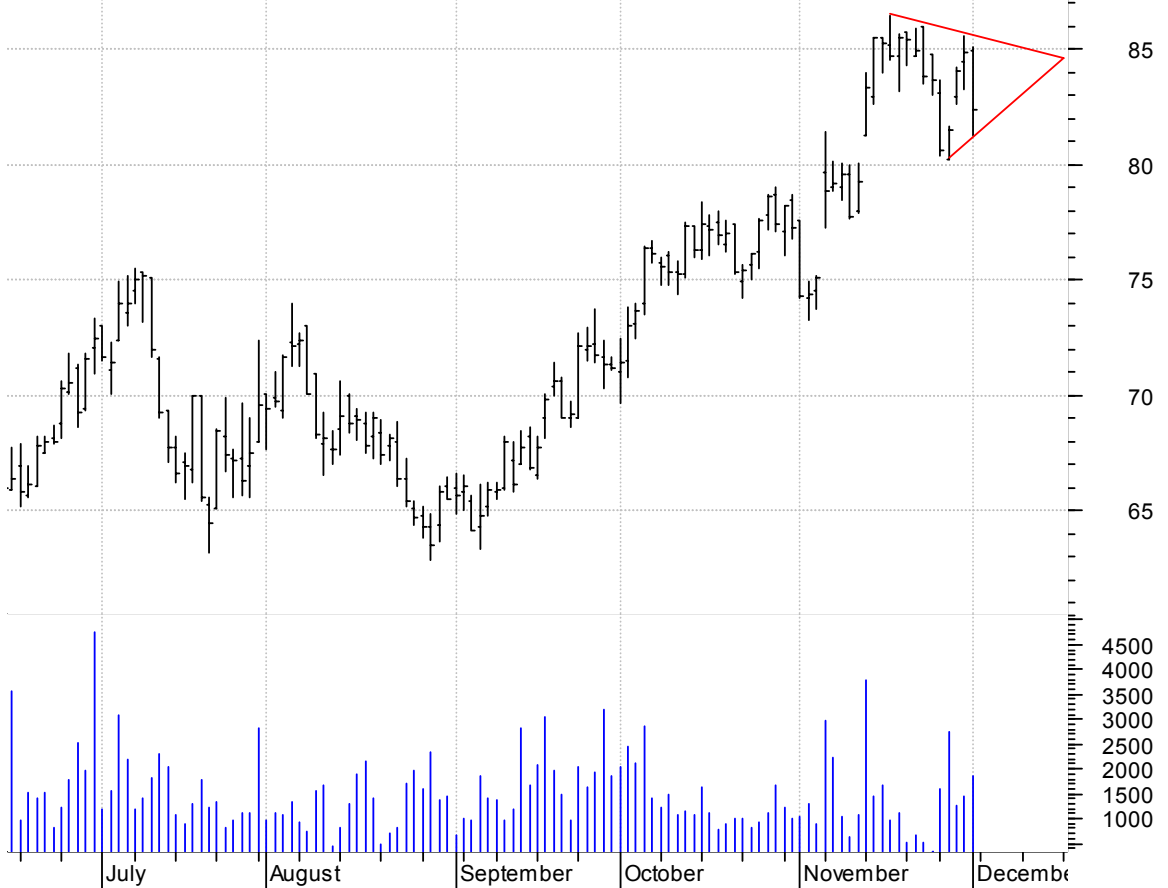
GCOM symm. tri. / buy on upside breakout on increased volume

Globecomm System (8.8300, 9.3000, 8.8300, 9.2900 +0.1000)



GLYT symm. tri. preceded by 'pole-like' move / buy on upside brkout on increased volume

Genlyte Group In (84.9400, 85.0500, 81.2800, 82.3400 -2.5200)



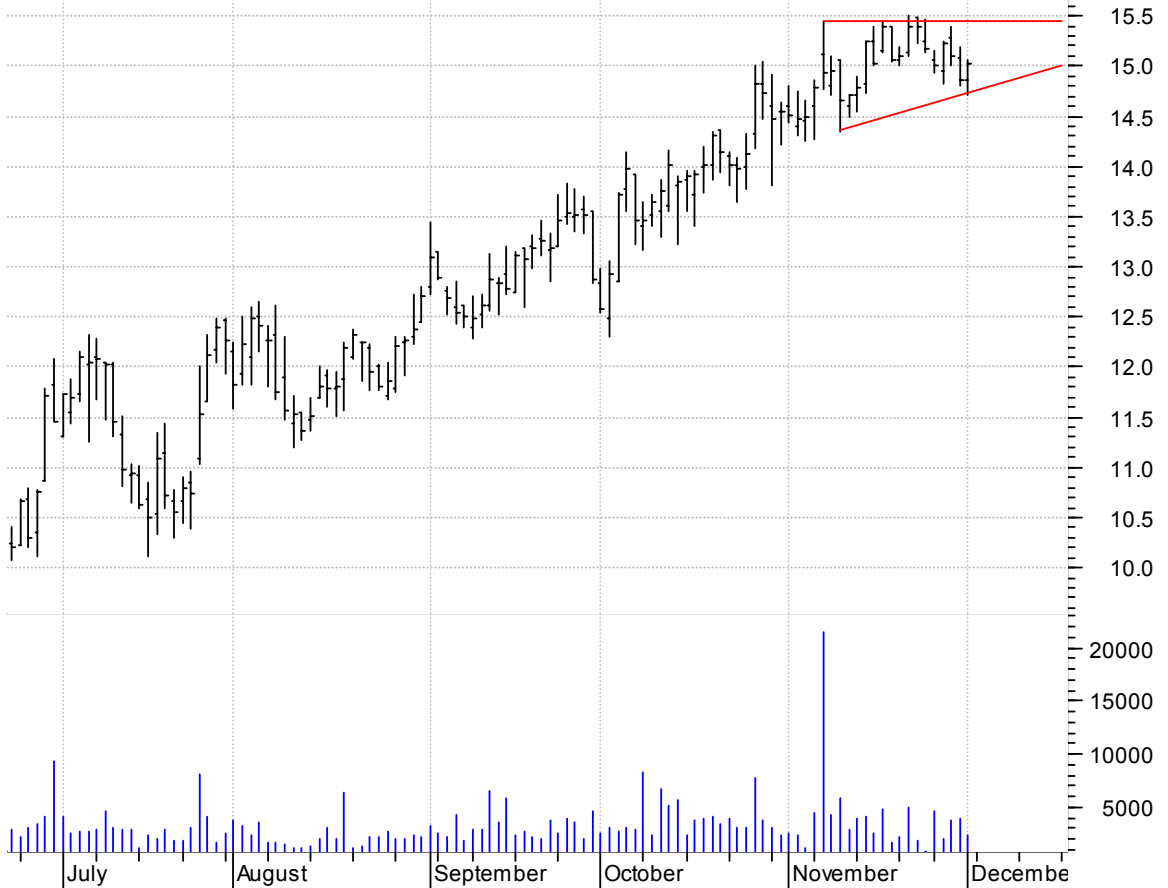
HURN symm. tri. preceded by 'pole-like' move / buy on upside brkout on increased volume

HURON CONSULTING (41.1000, 41.8400, 40.4400, 41.2600 +0.1200)



IFSIA asc. tri. / buy on upside breakout on increased volume

Interface Inc CI (14.8600, 15.0700, 14.7200, 15.0300 +0.1700)



LHCG symm. tri. preceded by 'pole-like' move / buy on upside breakout on increased volume

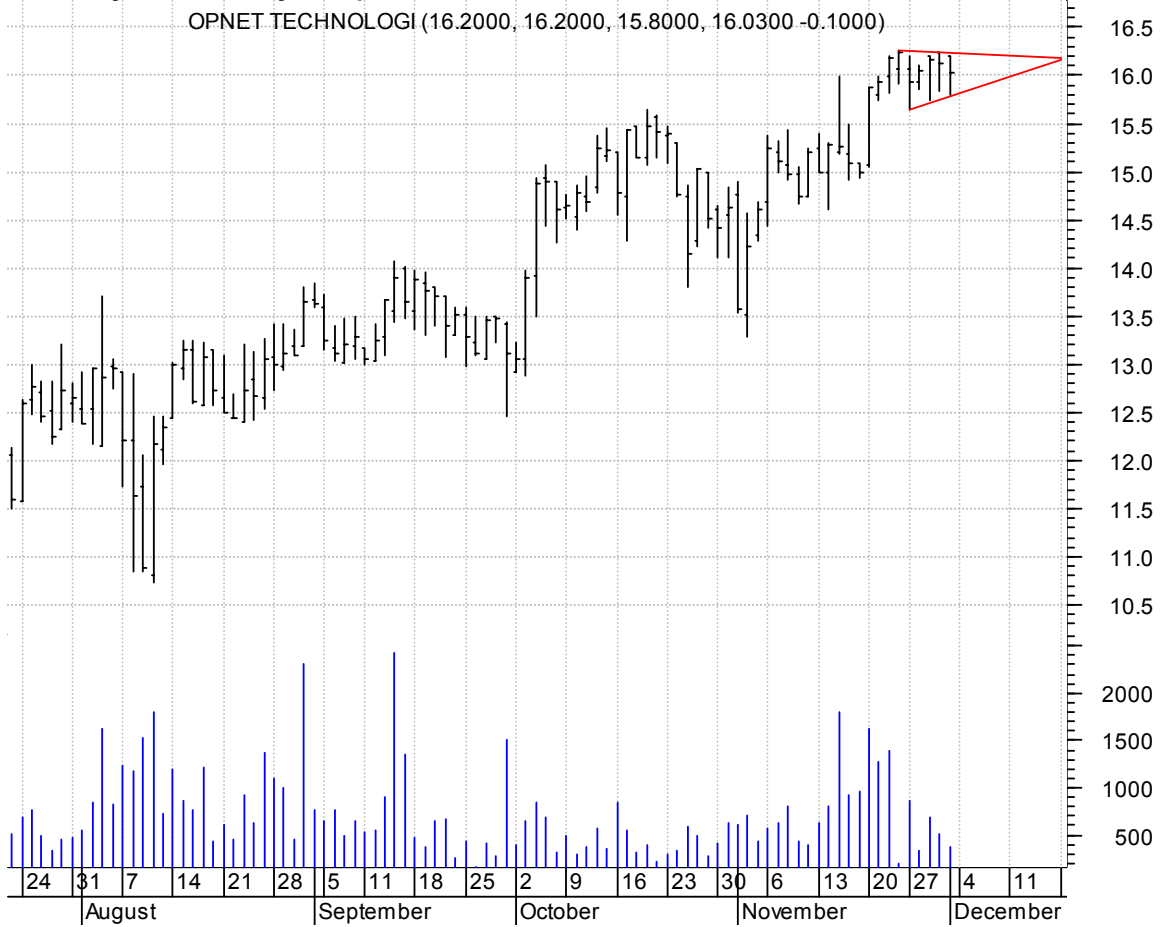
LHC GROUP INC.OT (27.3500, 27.5100, 26.8600, 27.0200 -0.6500)



MM symm. tri. preceded by 'pole-like' move / buy on upside brkout on larger than normal volume



OPNT symm. tri. / buy on upside brkout on increased volume



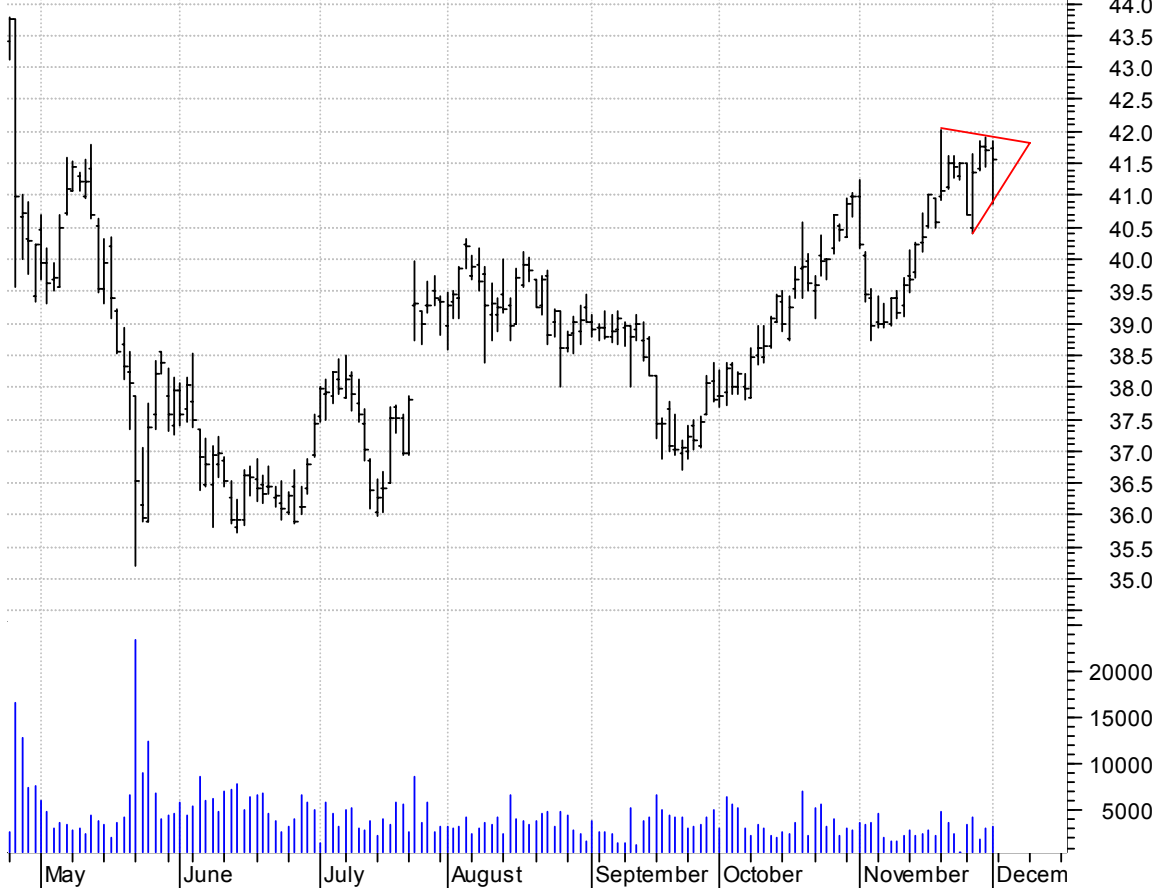
PCR symm. tri. preceded by 'pole-like' move / buy on upside brkout on increased volume

Perini Cp:NYSE (32.5400, 32.6300, 32.0000, 32.3600 -0.1600)



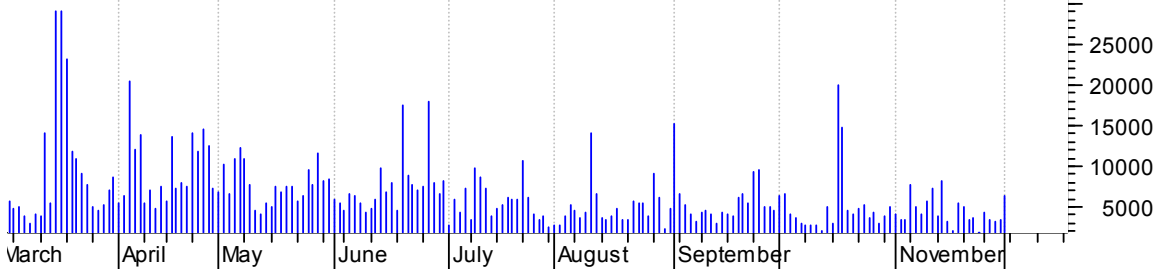
RYN symm. tri. / buy on upside brkout on increased volume

Rayonier Inc:NYS (41.7400, 41.8500, 40.8700, 41.5600 -0.1400)



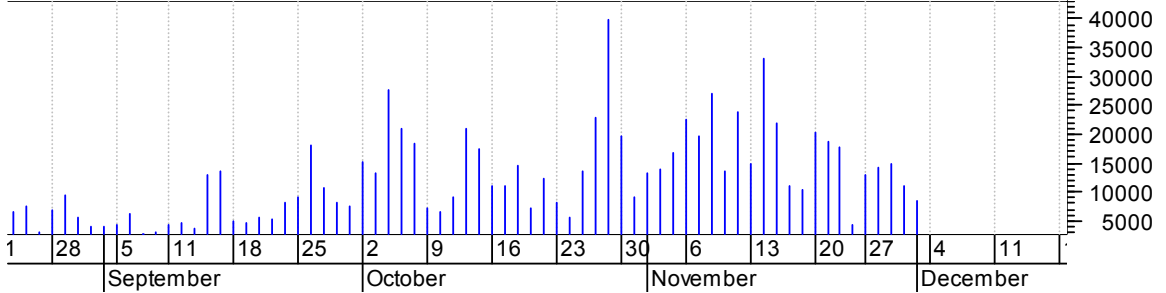
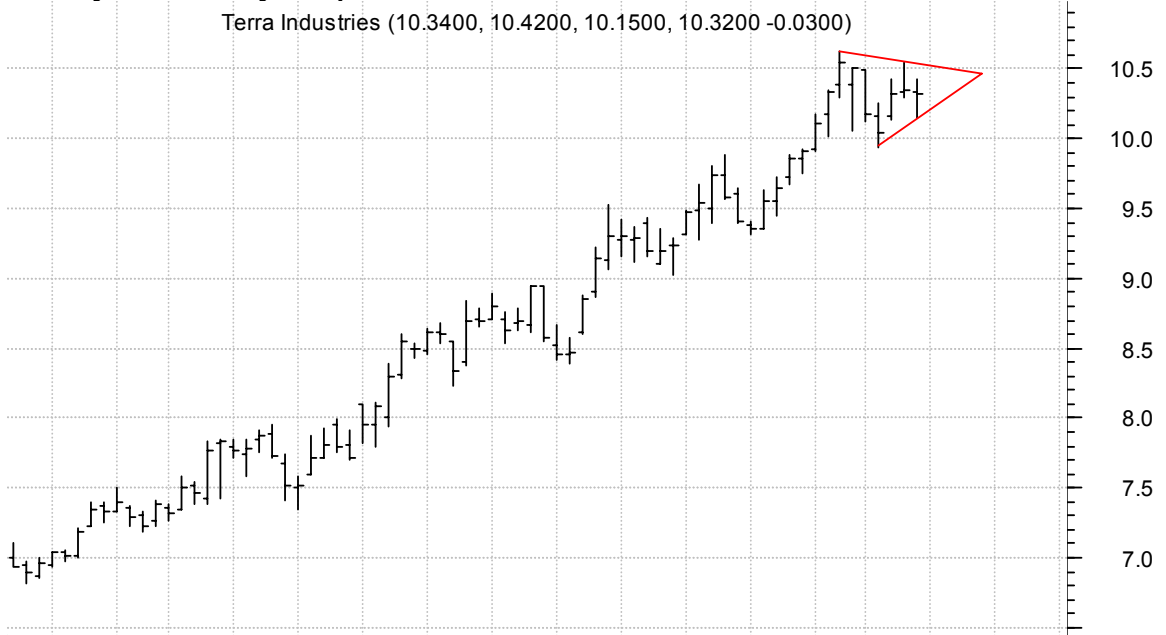
SSP symm. tri. / buy on upside breakout on increased volume

Scripps (E.W) Co (48.9800, 49.3300, 48.9200, 49.1100 +0.2500)



TRA symm. tri. / buy on upside breakout on increased volume

Terra Industries (10.3400, 10.4200, 10.1500, 10.3200 -0.0300)



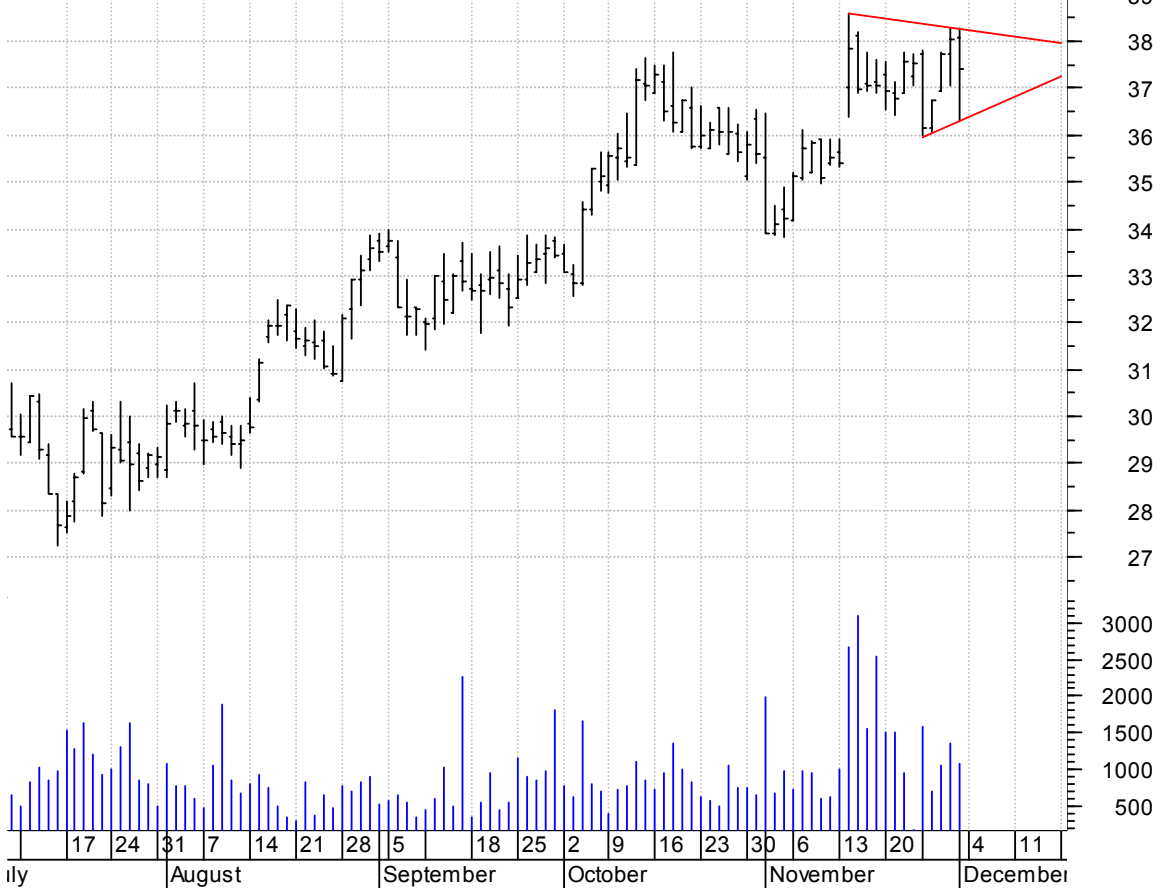
TTEC asc. tri. preceded by 'pole-like' move / buy on upside brkout on increased volume

Teletech Holding (22.5600, 22.6300, 22.0600, 22.3600 -0.2200)



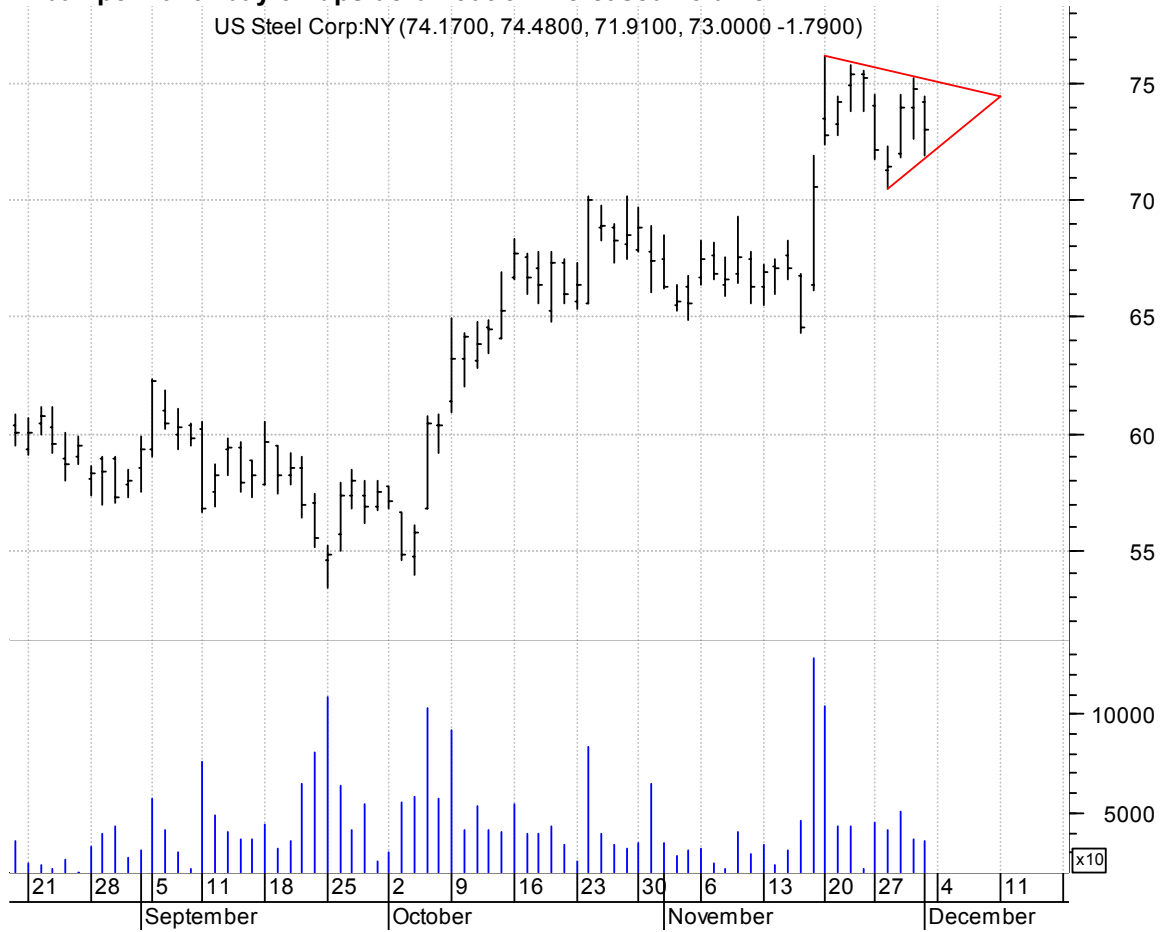
WGOV symm. tri. / buy on upside brkout on increased volume

Woodward Governo (38.0700, 38.2900, 36.3000, 37.4000 -0.6500)



X bull pennant / buy on upside brkout on increased volume

US Steel Corp:NY (74.1700, 74.4800, 71.9100, 73.0000 -1.7900)



chartpatterns.com

Chart Pattern Analysis for Timing the Markets

KMatras@aol.com