

**BEAV symm. tri. preceded by 'pole-like' move / buy on upside brkout on larger than normal volume**



**CCBL symm. tri. / buy on upside brkout on increased volume**



**DGII symm. tri. / buy on upside brkout on increased volume**

Digi Intl Inc:OT (14.0800, 14.1000, 13.7700, 13.8800 -0.1300)



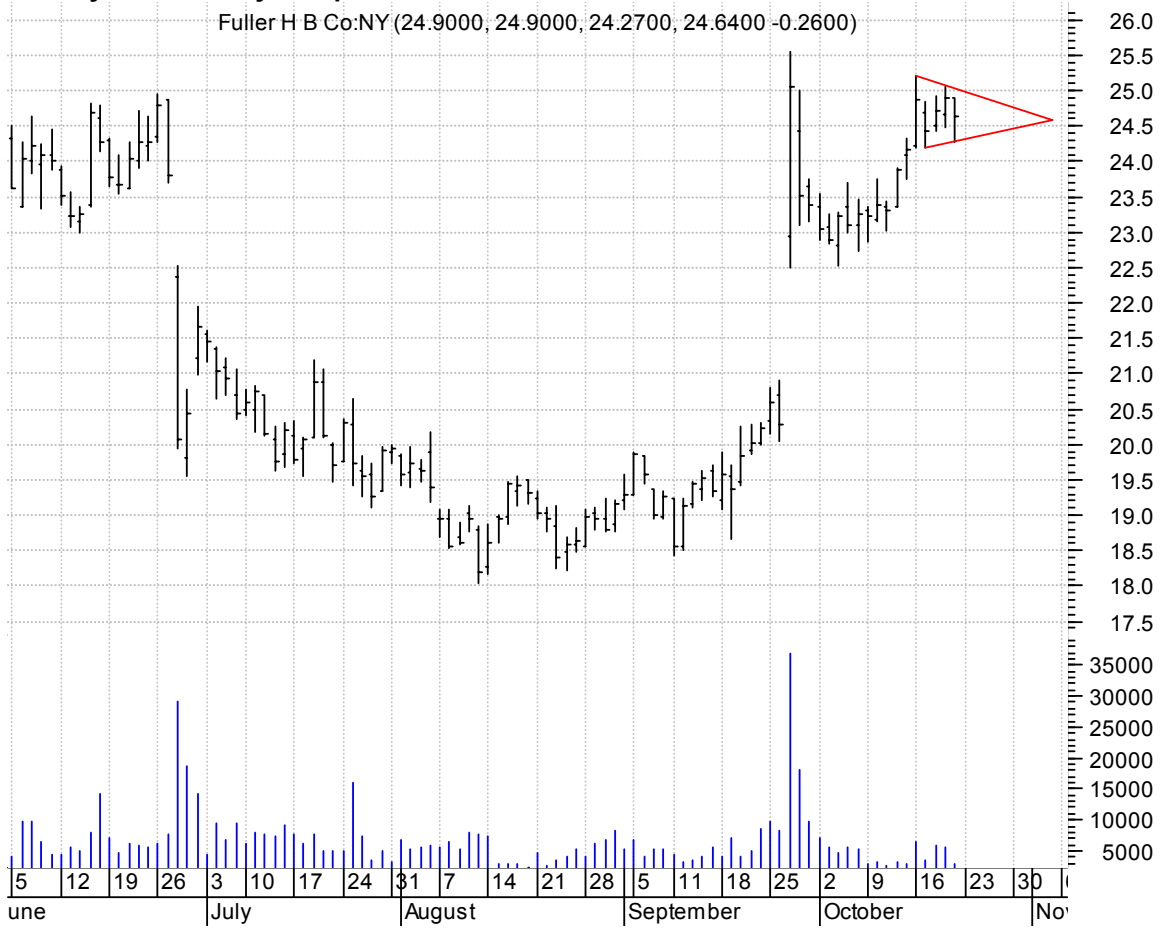
**FLA symm. tri. / buy on upside brkout on increased volume**

Florida East Coa (60.1600, 60.1600, 59.1600, 59.6000 -0.3100)



**FUL symm. tri. / buy on upside breakout on increased volume**

Fuller H B Co:NY (24.9000, 24.9000, 24.2700, 24.6400 -0.2600)



**GDI large falling wedge / buy on upside breakout on increased volume**

Gardner Denver I (35.0200, 35.2000, 34.0100, 35.0400 -0.5700)



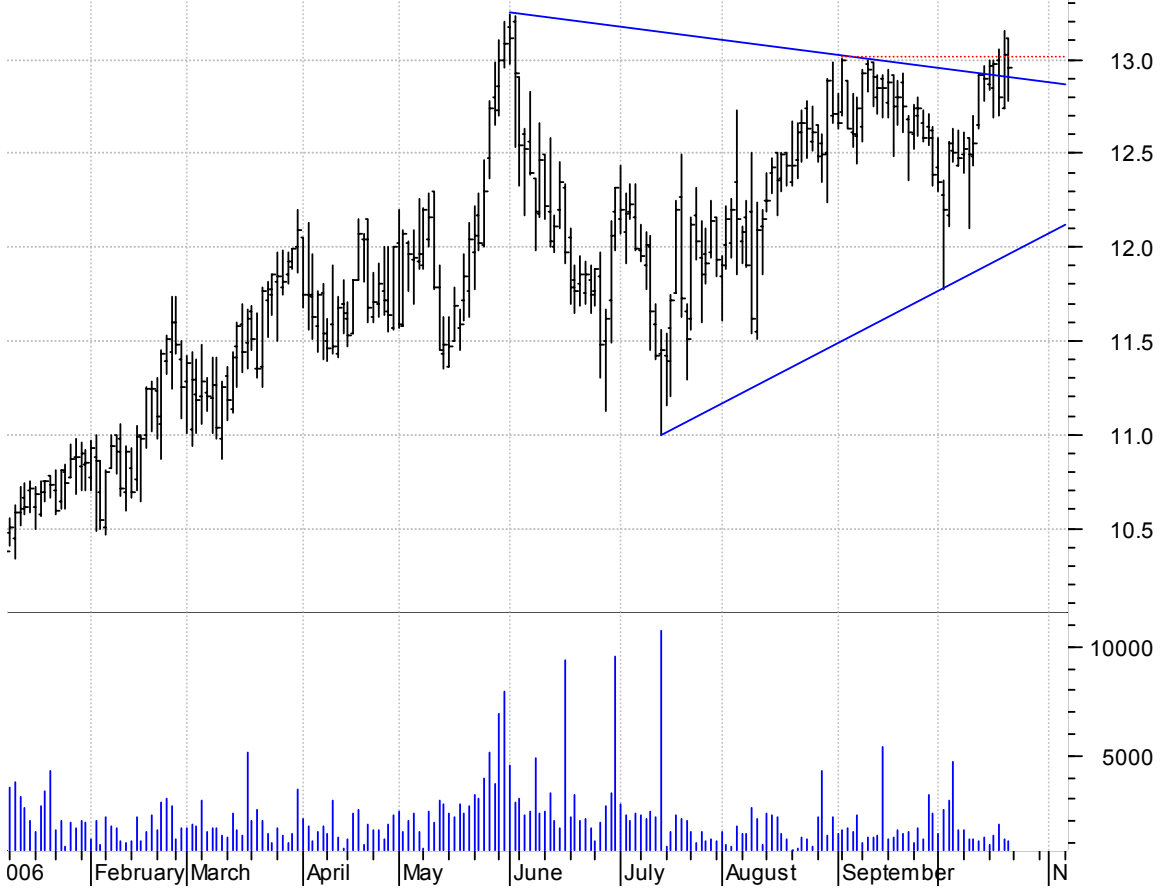
**GFIG asc. tri. / buy on upside breakout on increased volume**

GFI GROUP INC:OT (59.3000, 59.3100, 58.2000, 58.5500 -0.4900)



**GNCMA symm. tri. / buy on upside breakout thru dotted red line on increased volume**

General Communic (13.1100, 13.1100, 12.7800, 12.9600 -0.0700)



**GRB asc. tri. / buy on upside brkout on increased volume**

Gerber Scientifi (15.3100, 15.3100, 14.7500, 15.0400 -0.2700)



**LAYN symm. tri. preceded by 'pole-like' move / buy on upside brkout on increased volume**

Layne Christense (30.3900, 30.4800, 29.7100, 29.9200 -0.3900)



**LBY symm. tri / buy on upside brkout thru dotted red line on increased volume**

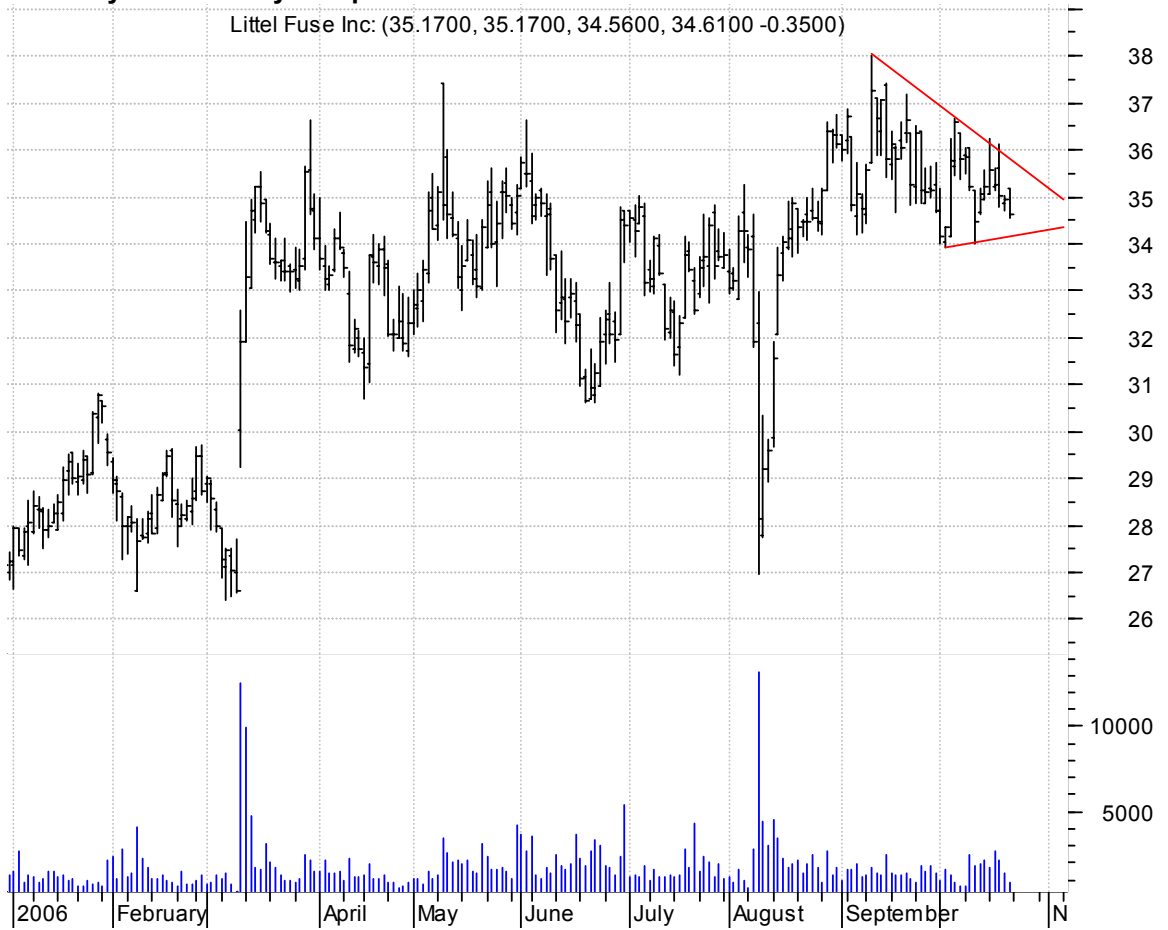


**LFL symm. tri. / buy on upside brkout on increased volume**



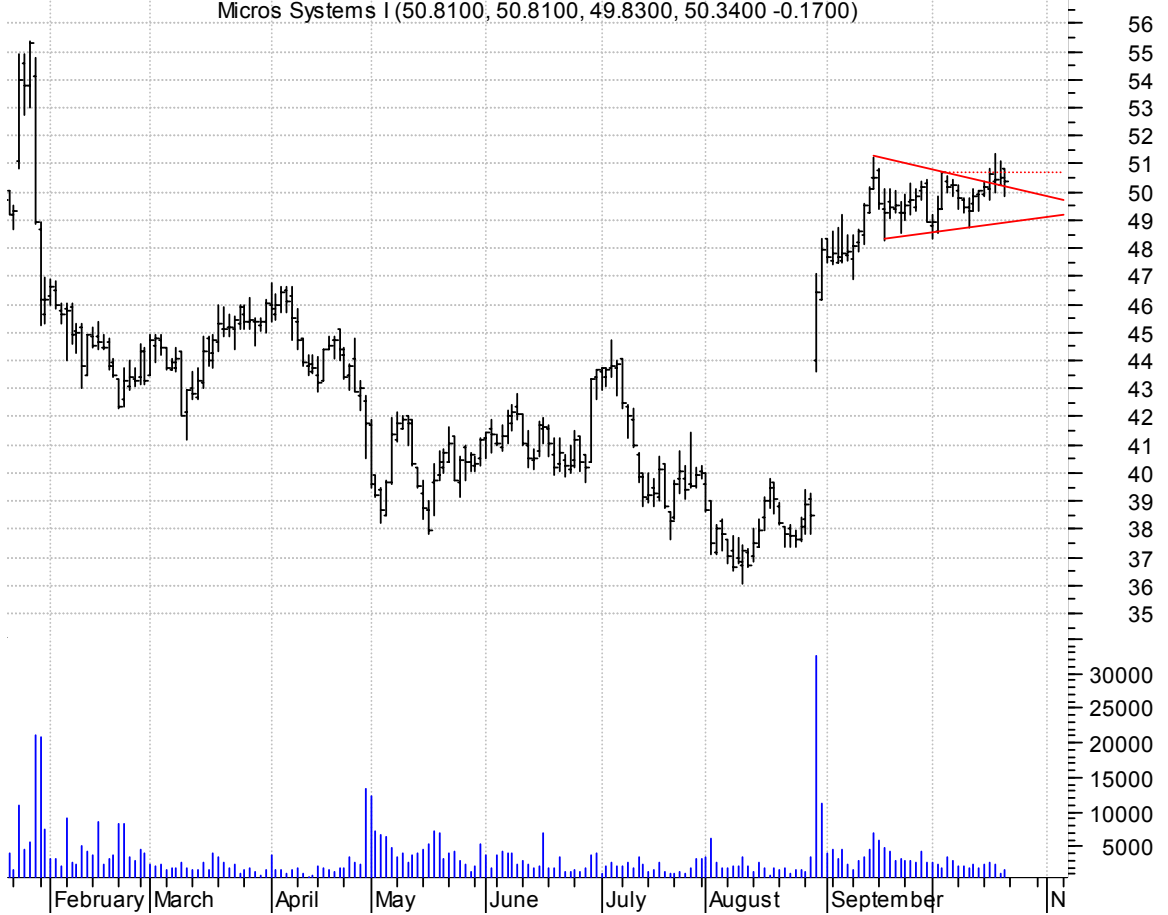
**LFUS symm. tri. / buy on upside breakout on increased volume**

Littel Fuse Inc: (35.1700, 35.1700, 34.5600, 34.6100 -0.3500)



**MCRS symm. tri. preceded by 'pole-like' move / buy on upside breakout on increased volume**

Micros Systems I (50.8100, 50.8100, 49.8300, 50.3400 -0.1700)



**MCS asc. tri. / buy on upside brkout on increased volume**

Marcus Cp:NYSE (24.2200, 24.2200, 23.7200, 24.0200 -0.1500)



**MLHR bullish flagging / buy on upside brkout on increased volume**

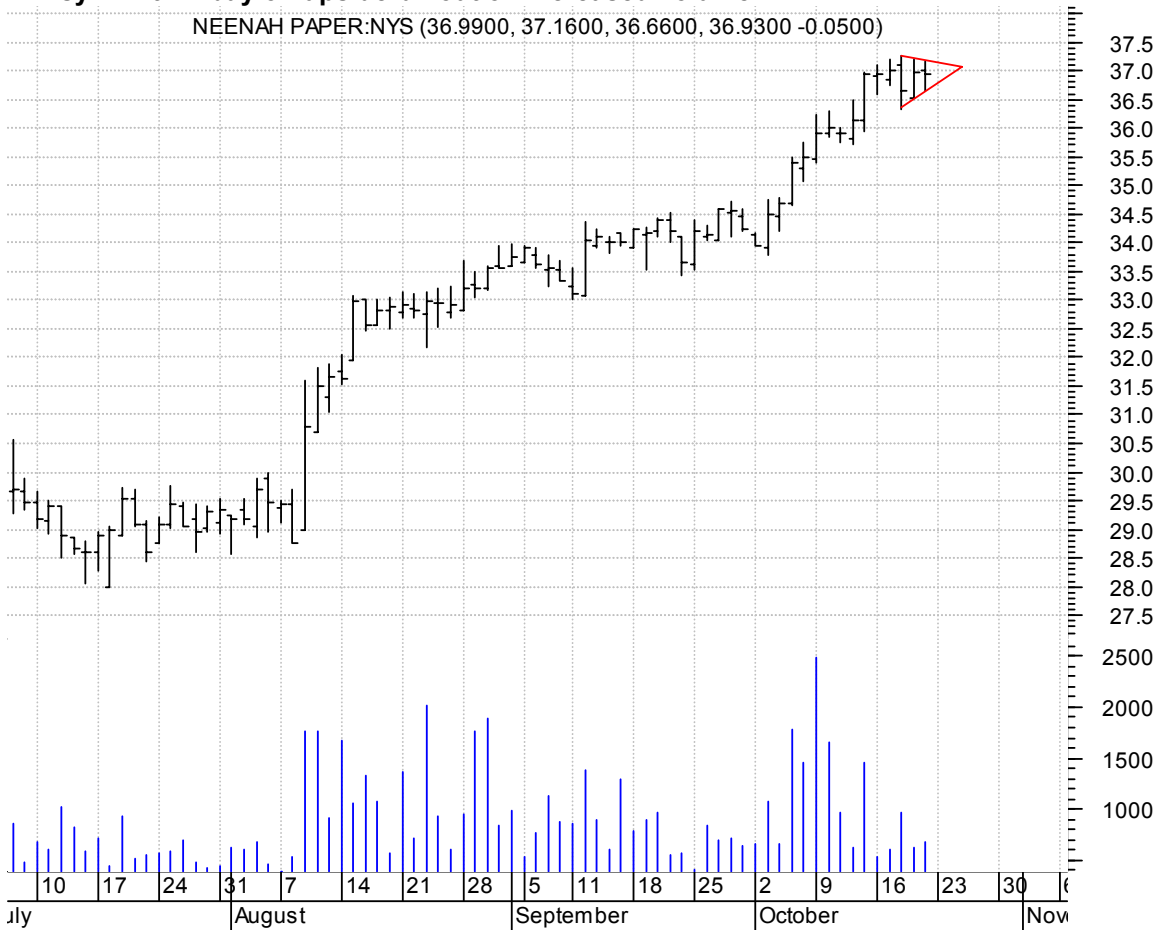
Herman Miller In (33.7800, 33.7800, 32.7300, 33.4200 -0.1800)





**NP symm. tri. / buy on upside brkout on increased volume**

NEENAH PAPER:NYS (36.9900, 37.1600, 36.6600, 36.9300 -0.0500)



**OCN symm. tri. / buy on upside brkout on increased volume**

Ocwen Financial (15.5600, 15.6500, 15.4800, 15.5600 +0.0800)



**OLN asc. tri. / buy on upside breakout on increased volume**

Olin Corp:NYSE (17.5100, 17.5800, 17.1000, 17.2600 -0.1600)



**ORA big bullish flagging pattern / buy on upside breakout on increased volume**

ORMAT TECHNOLOGI (36.7000, 37.5000, 36.6000, 37.4400 +0.8200)



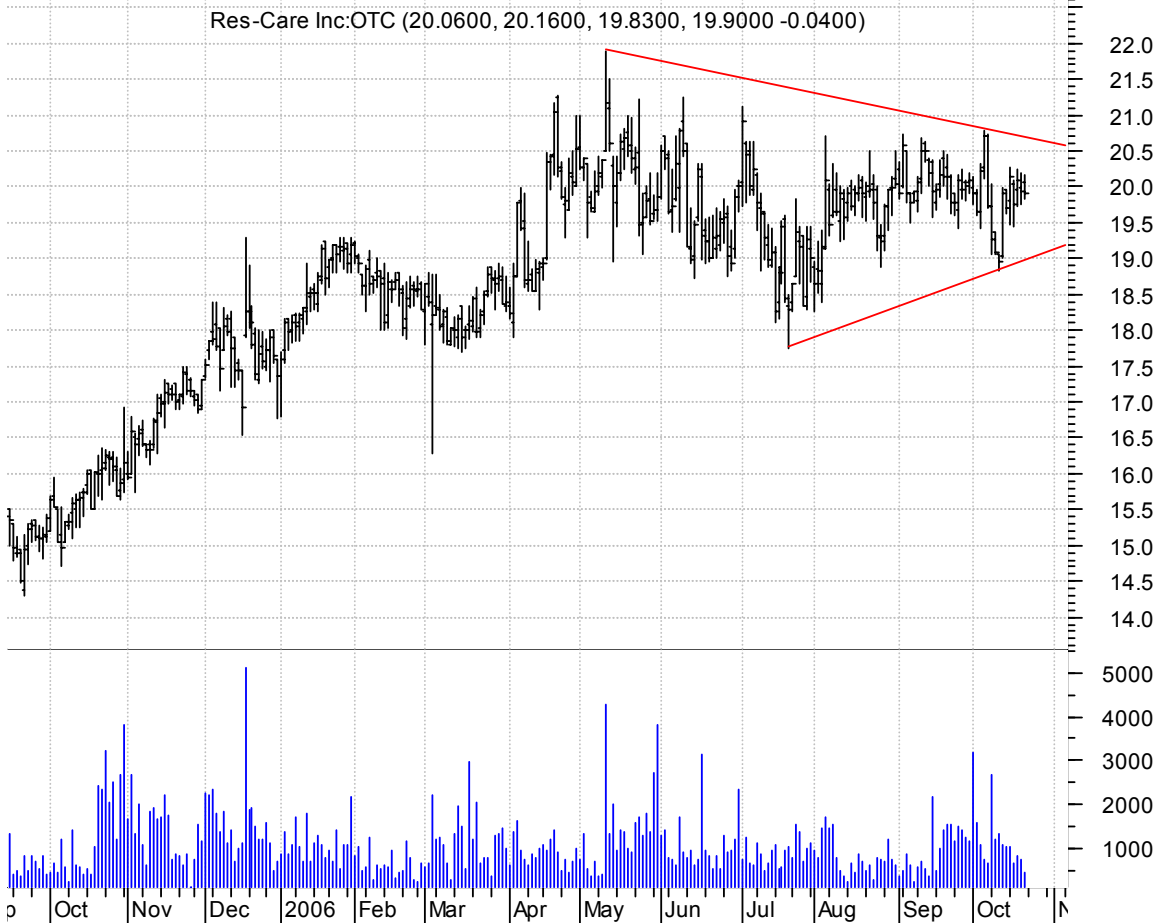
**PAY asc. tri. preceded by 'pole-like' move / buy on upside brkout on increased volume**

VeriFone Holding (28.4000, 28.6800, 28.2200, 28.5100 +0.1600)



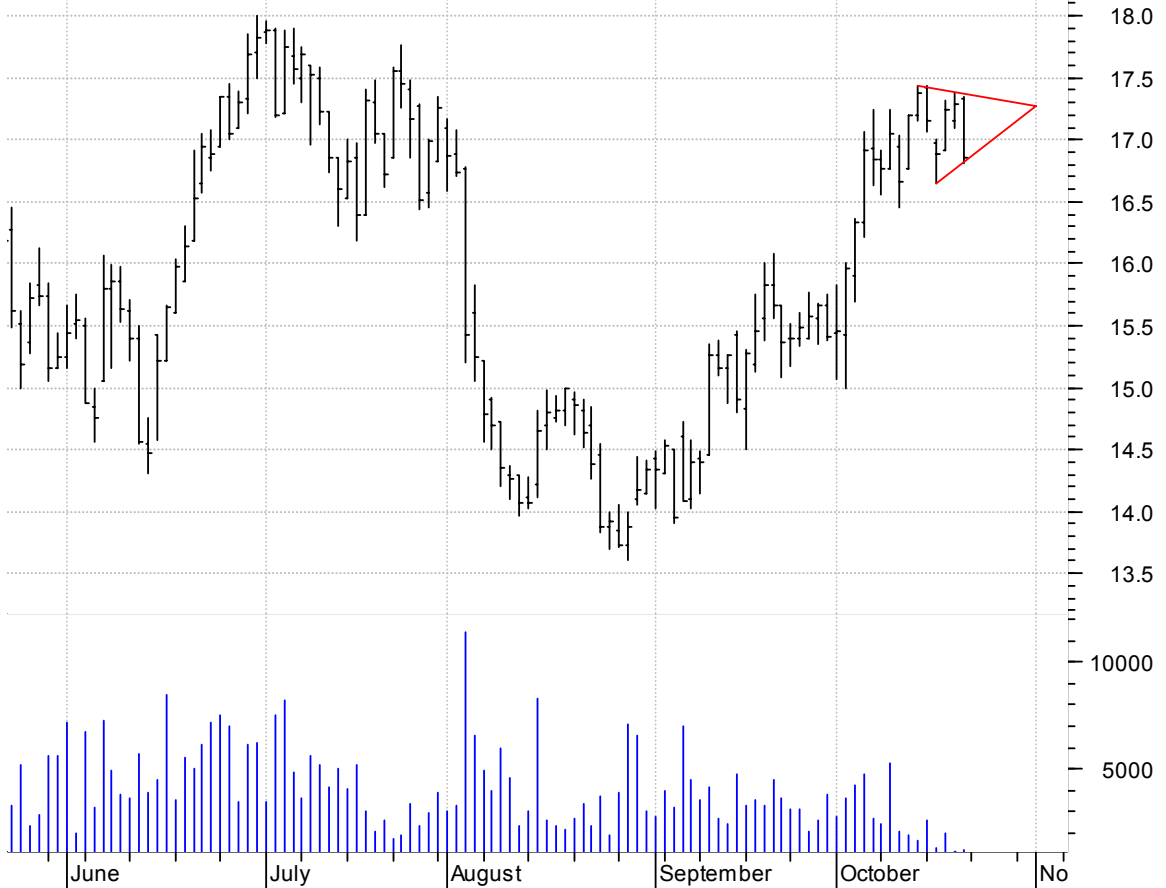
**RSCR symm. tri. / buy on upside brkout on increased volume**

Res-Care Inc:OTC (20.0600, 20.1600, 19.8300, 19.9000 -0.0400)



**RVI symm. tri. / buy on upside brkout on increased volume**

Retail Ventures: (17.3300, 17.3500, 16.8100, 16.8500 -0.4400)



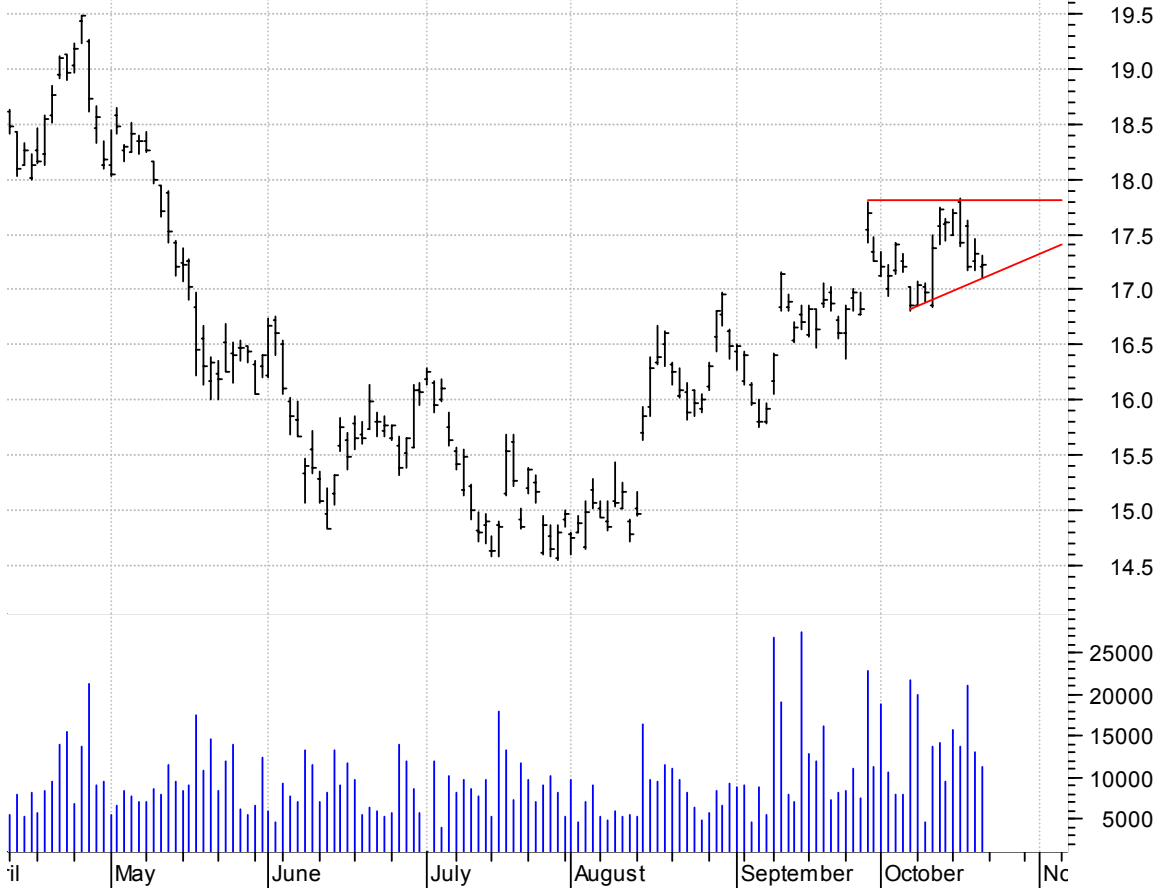
**SCVL symm. tri. / buy on upside brkout on increased volume**

Shoe Carnival In (28.0600, 28.1800, 27.3100, 27.9700 +0.1300)



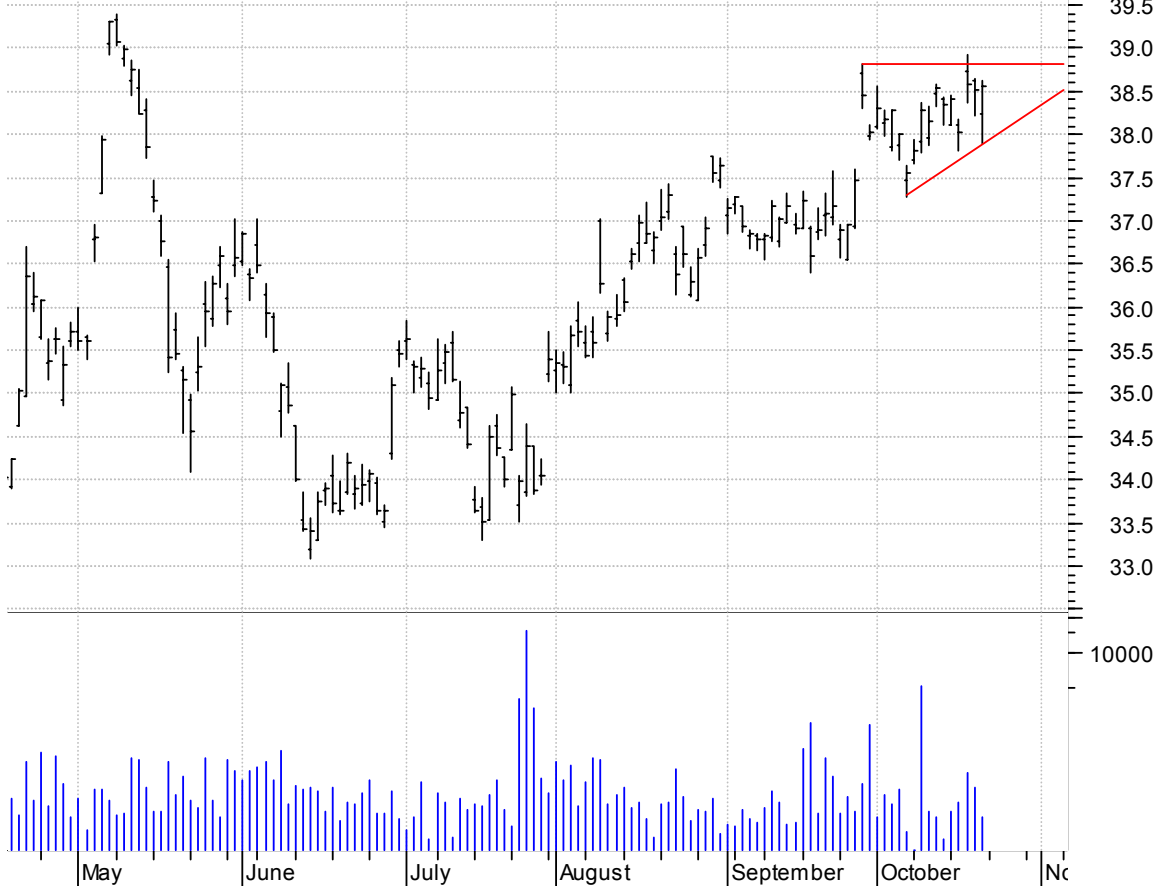
**STM asc. tri. / buy on upside brkout on increased volume**

STMmicroelectroni (17.2000, 17.3100, 17.1100, 17.2200 -0.1000)



**TP asc. tri. / buy on upside brkout on increased volume**

TPG N.V. ADS:NYS (38.2500, 38.6200, 37.9000, 38.5500 +0.0400)



**TRIB falling wedge preceded by 'pole-like' move / buy on upside brkout on increased volume**

Trinity Biotech (8.9300, 9.1500, 8.6600, 8.8000 -0.3300)



**TU h. & sh. / sell on downside brkout on increased volume**

TELUS CP NON VTG (54.2700, 54.4800, 53.8000, 53.9900 +0.1000)



**VRX symm. tri. / buy on upside brkout on increased volume**



**WRLD bullish flagging / buy on upside brkout on increased volume**



### WTS bullish pennant / buy on upside breakout on increased volume



**chartpatterns.com**  
Chart Pattern Analysis for Timing the Markets

[KMatras@aol.com](mailto:KMatras@aol.com)