

ACGL symm. tri. / buy on upside breakout on increased volume

Arch Capital Gro (59.2100, 59.2100, 58.2300, 58.5800 -0.5100)



AGE symm. tri. (discounting spike day) / buy on upside breakout on increased volume

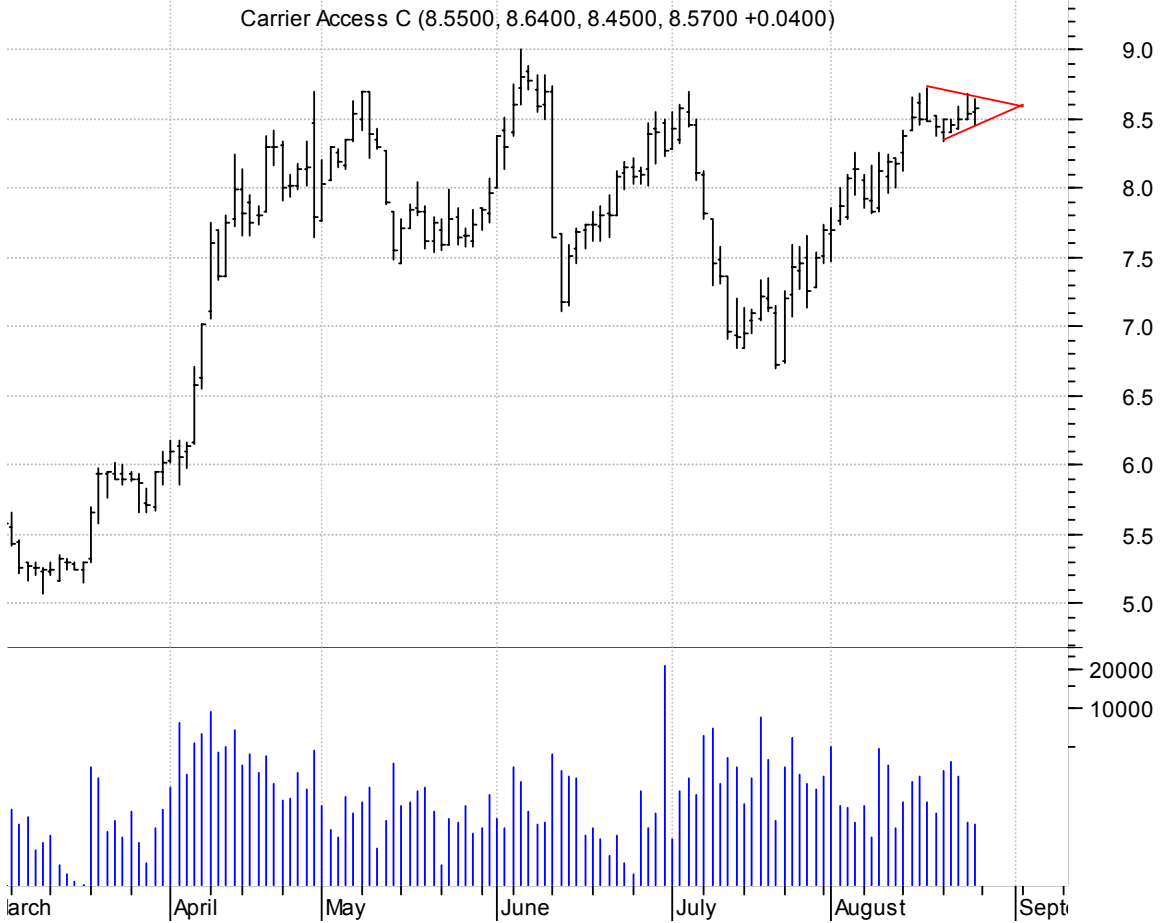
Edwards A G:NYSE (52.2000, 52.7800, 51.8500, 52.7500 +0.3000)



AXE symm. tri. preceded by 'pole-like' move / buy on upside breakout on increased volume

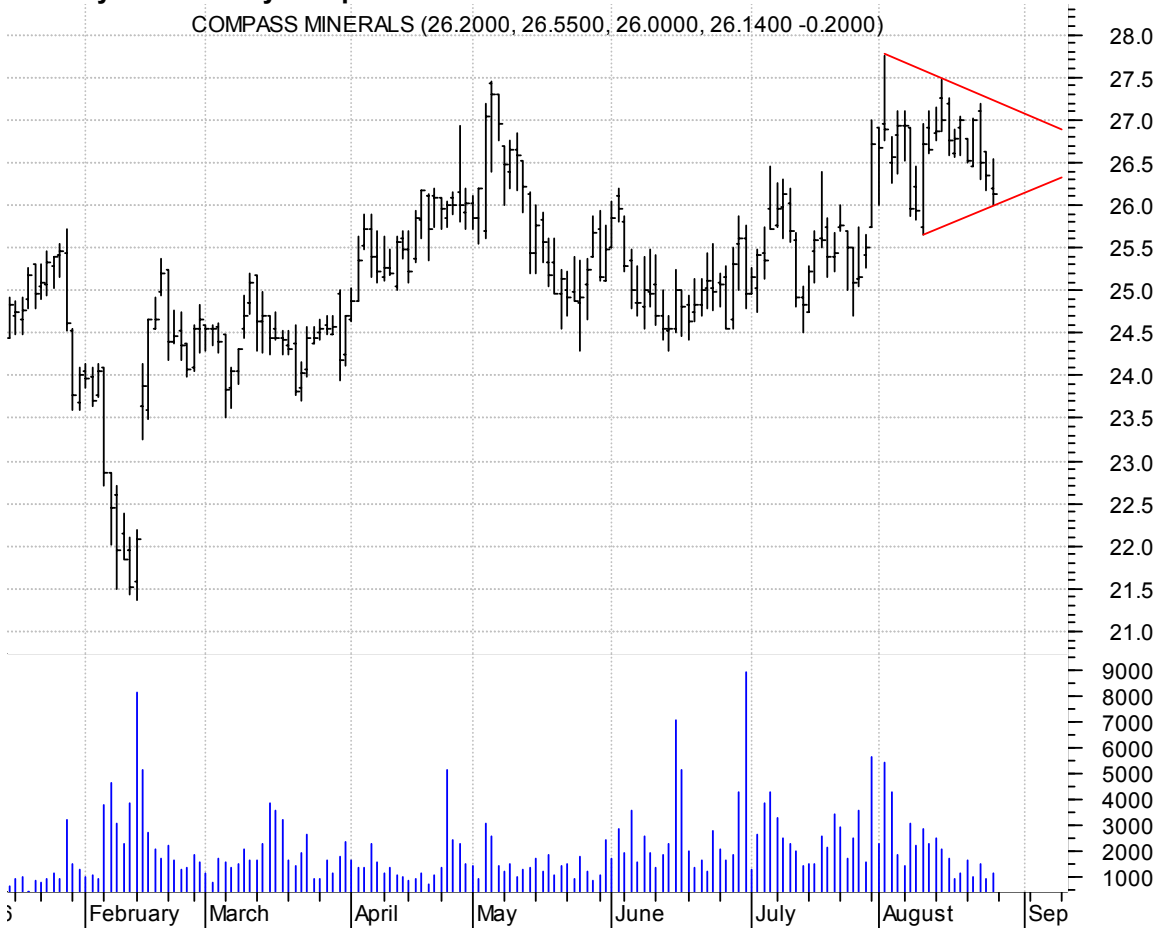


CACS symm. tri. / buy on upside breakout on increased volume



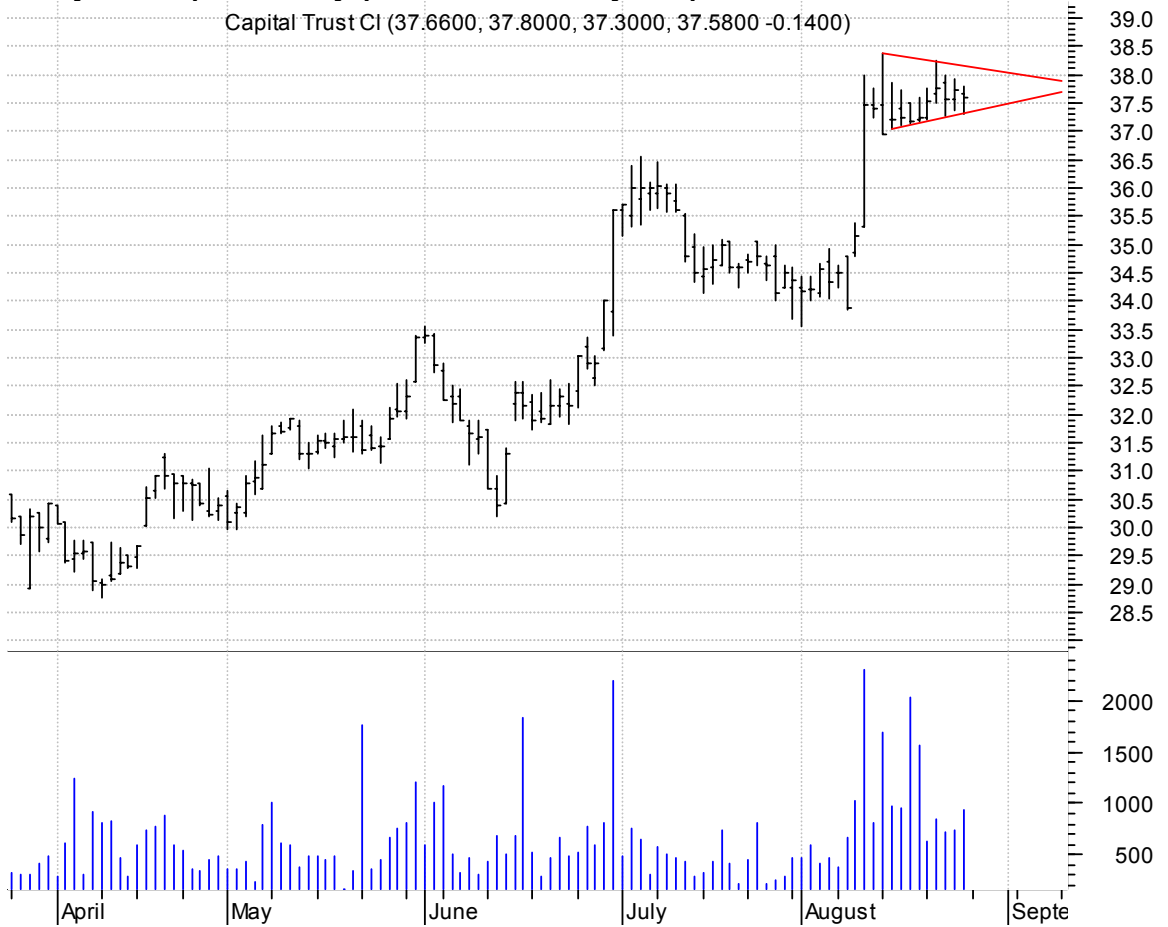
CMP symm. tri. / buy on upside breakout on increased volume

COMPASS MINERALS (26.2000, 26.5500, 26.0000, 26.1400 -0.2000)



CT symm. tri. preceded by 'pole-like' move / buy on upside breakout on increased volume

Capital Trust Cl (37.6600, 37.8000, 37.3000, 37.5800 -0.1400)



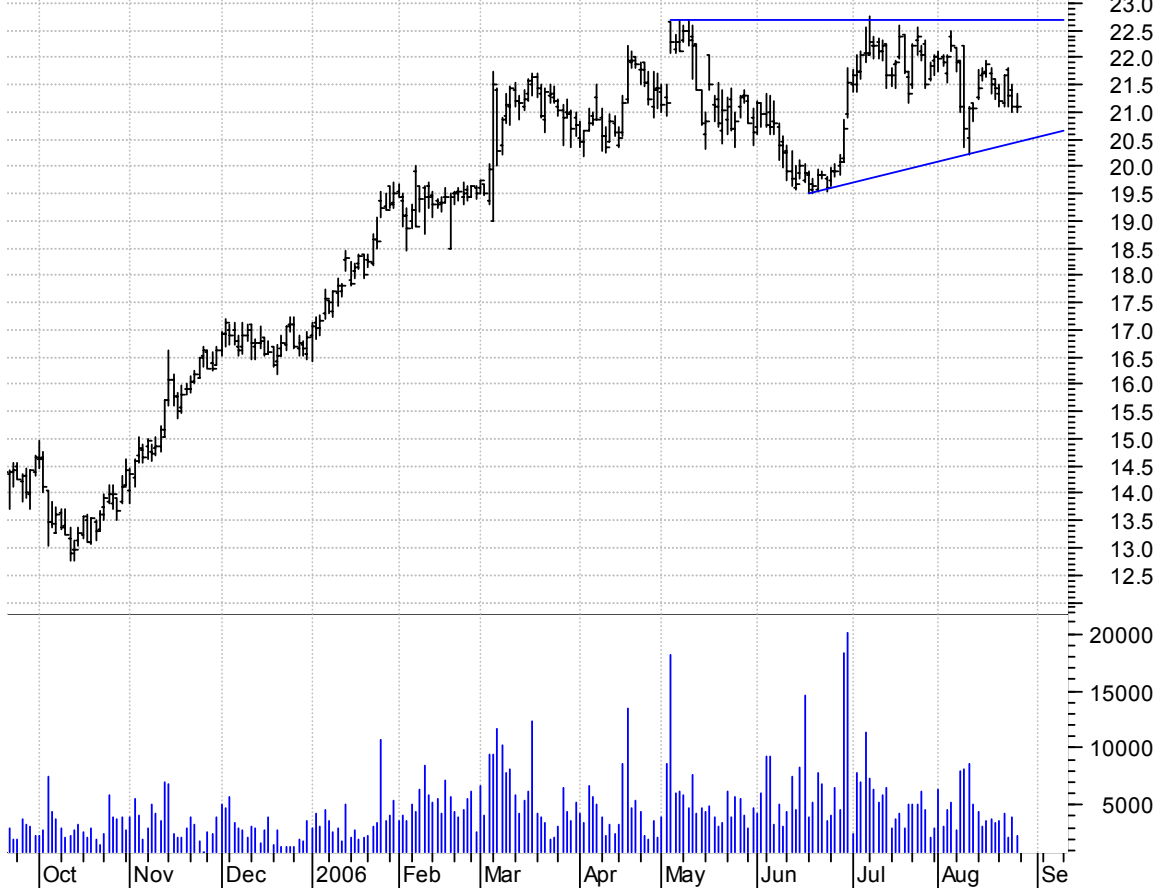
DRQ symm. tri. / buy on upside breakout on increased volume

Dril-Quip Inc:NY (79.1900, 80.6600, 78.5200, 79.7900 +1.5400)

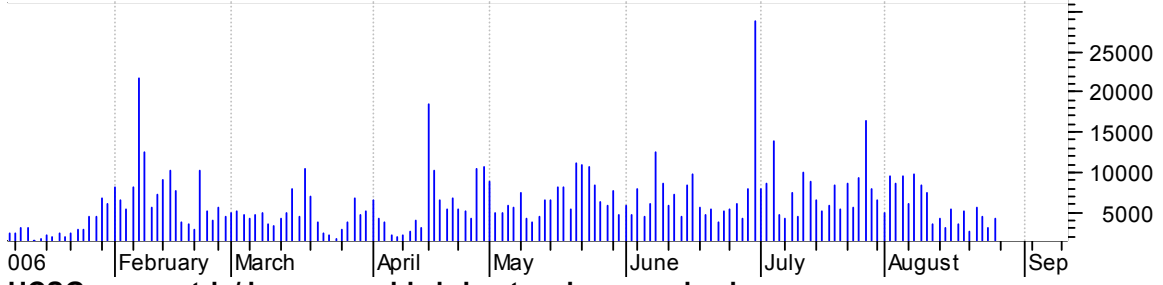


FCH asc. tri. / buy on upside breakout on increased volume

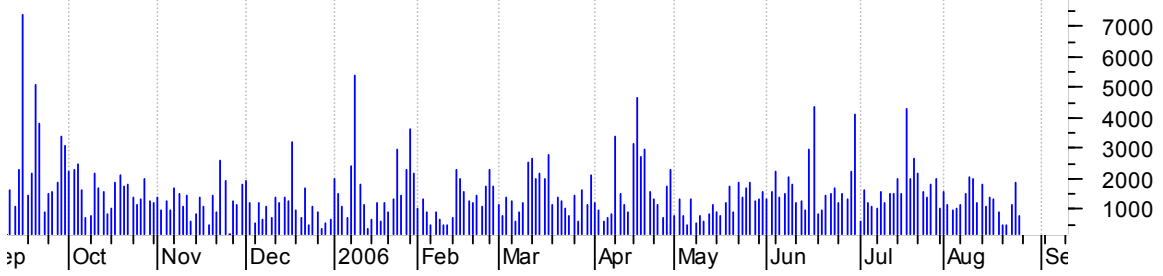
Felcor Lodging T (21.1000, 21.3300, 20.9900, 21.1000 +0.000)



GDI symm. tri. in a larger falling wedge / buy on upside brkout of symm. tri. on increased volume



HCSG symm. tri. / buy on upside brkout on increased volume



HLX bullish flagging / buy on upside on increased volume

Helix Energy Sol (37.9000, 38.6200, 37.8700, 38.5100 +1.0600)



HSC symm. tri. preceded by 'pole-like' move / buy on upside breakout on increased volume

Harsco Corp:NYSE (77.9000, 79.5500, 77.8500, 79.1500 +0.8500)



LMNX asc. tri. / buy on upside brkout on increased volume

LuminexCp:OTC (17.0900, 17.4800, 17.0200, 17.4700 +0.2700)



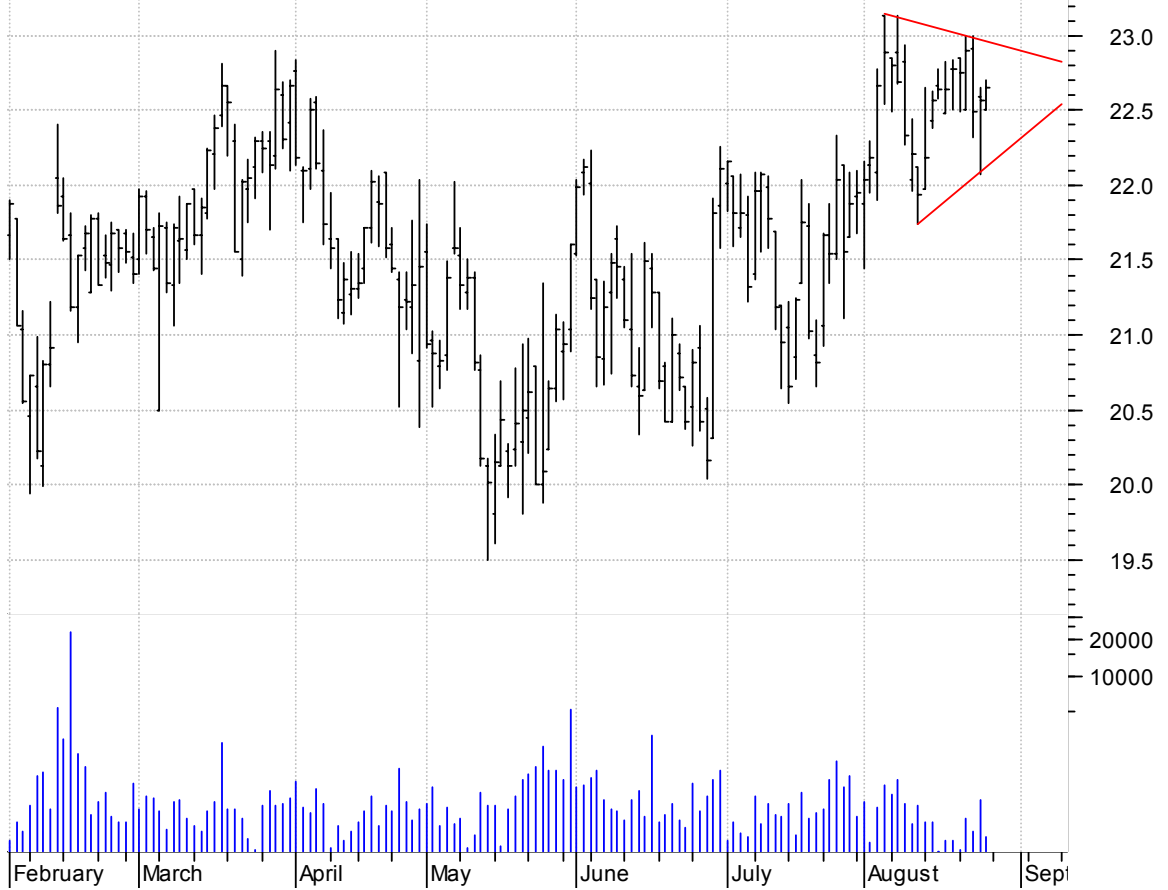
LNET rectangle preceded by 'pole-like' move / buy on upside brkout on increased volume

Lodgenet Enterta (18.9200, 19.3200, 18.9100, 19.2500 +0.2800)



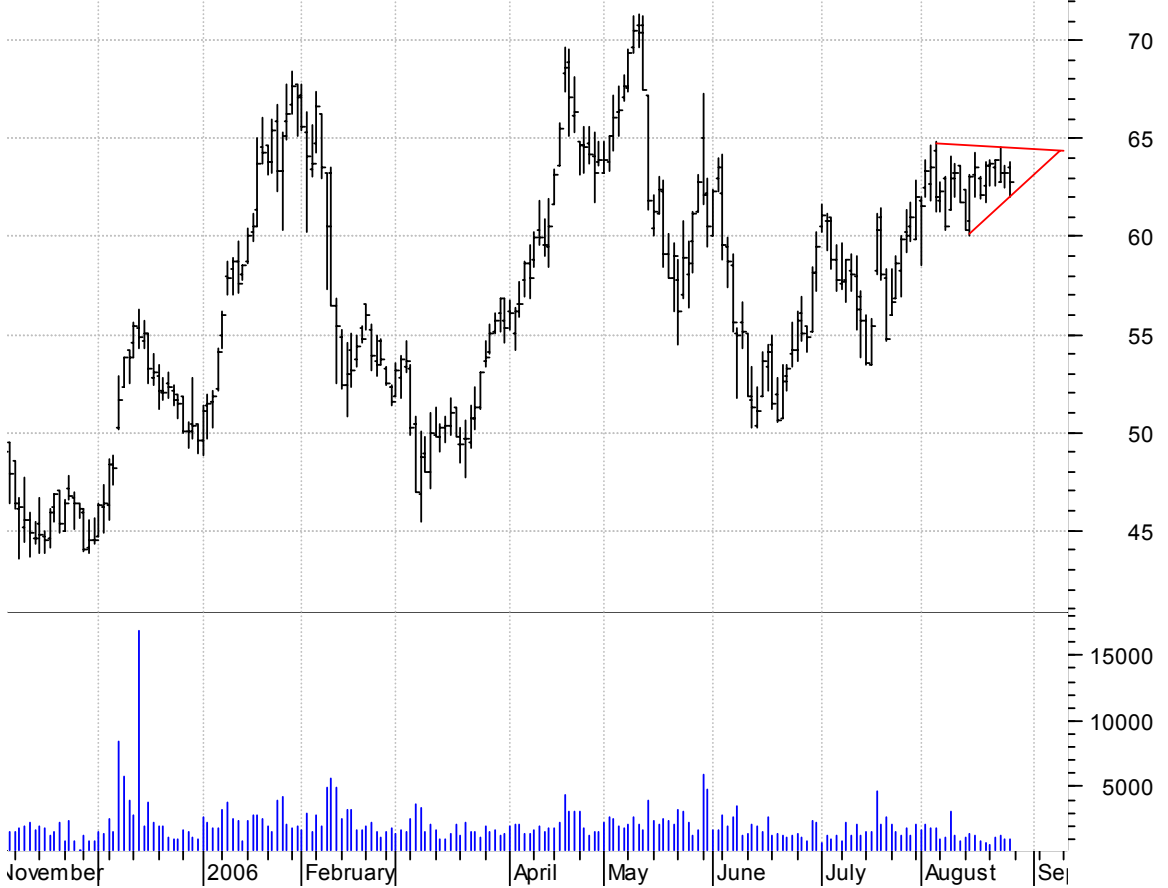
LTC symm. tri. / buy on upside breakout on increased volume

LTC Properties I (22.5000, 22.7000, 22.5000, 22.6500 +0.0900)



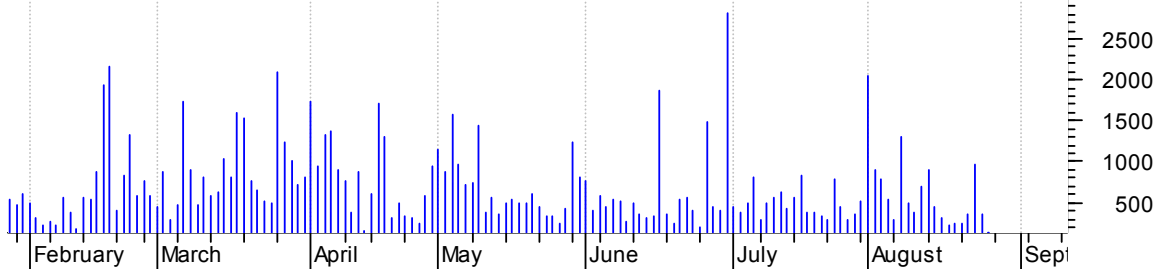
LUFK symm. tri. / buy on upside breakout on increased volume

Lufkin Industrie (63.5400, 63.8500, 62.0000, 62.7800 -0.4200)



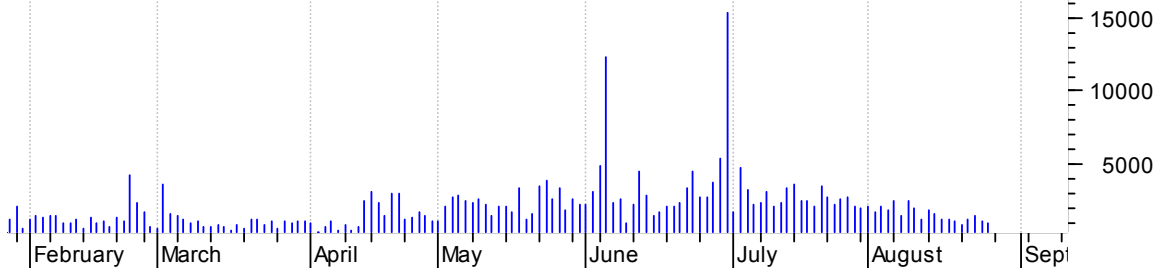
NAVG symm. tri. / buy on upside brkout on increased volume

Navigators Group (44.4600, 44.8000, 44.0600, 44.2400 -0.2200)



NTG symm. tri. / buy on upside brkout on increased volume

Natco Group Inc: (36.4900, 37.0400, 36.0700, 36.4100 -0.0300)



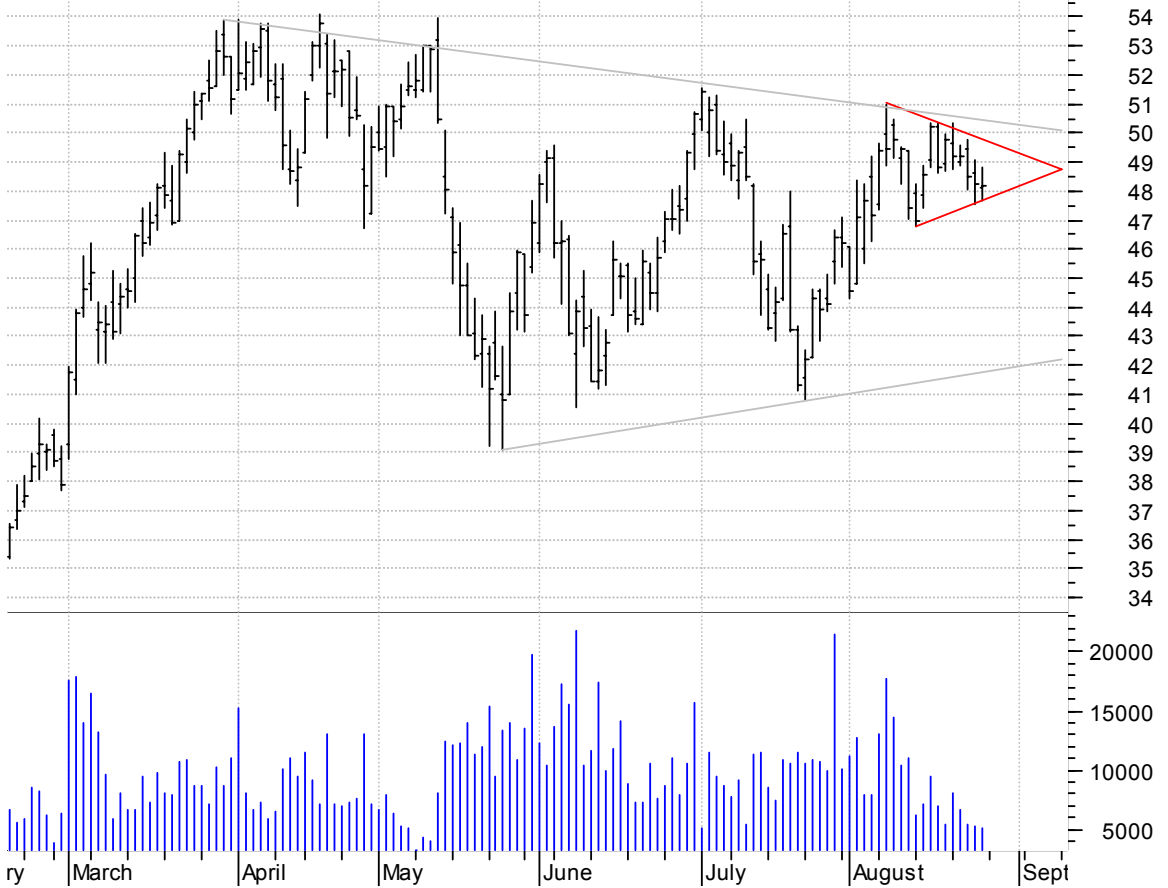
ORB symm. tri. preceded by 'pole-like' move / buy on upside brkout on increased volume

Orbital Sciences (17.7500, 17.9600, 17.3100, 17.3600 -0.4900)



OS smaller symm. tri. in a larger symm. tri. / buy on upside brkout of smaller symm. tri. on inc. vol.

Oregon Steel Mil (48.1000, 48.8300, 47.6800, 48.1900 -0.0500)



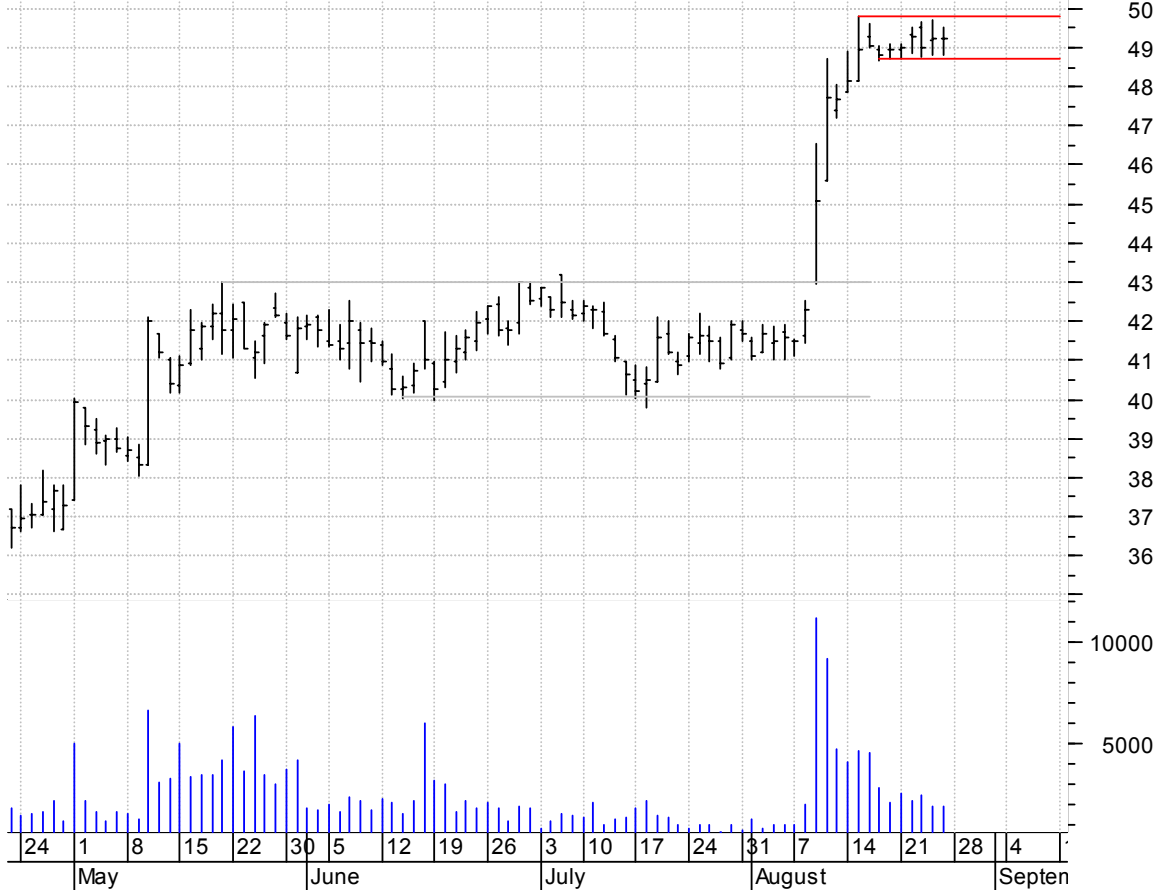
PWR symm. tri. / buy on upside brkout on increased volume

Quanta Services (17.0000, 17.2400, 16.8800, 17.1600 +0.1400)

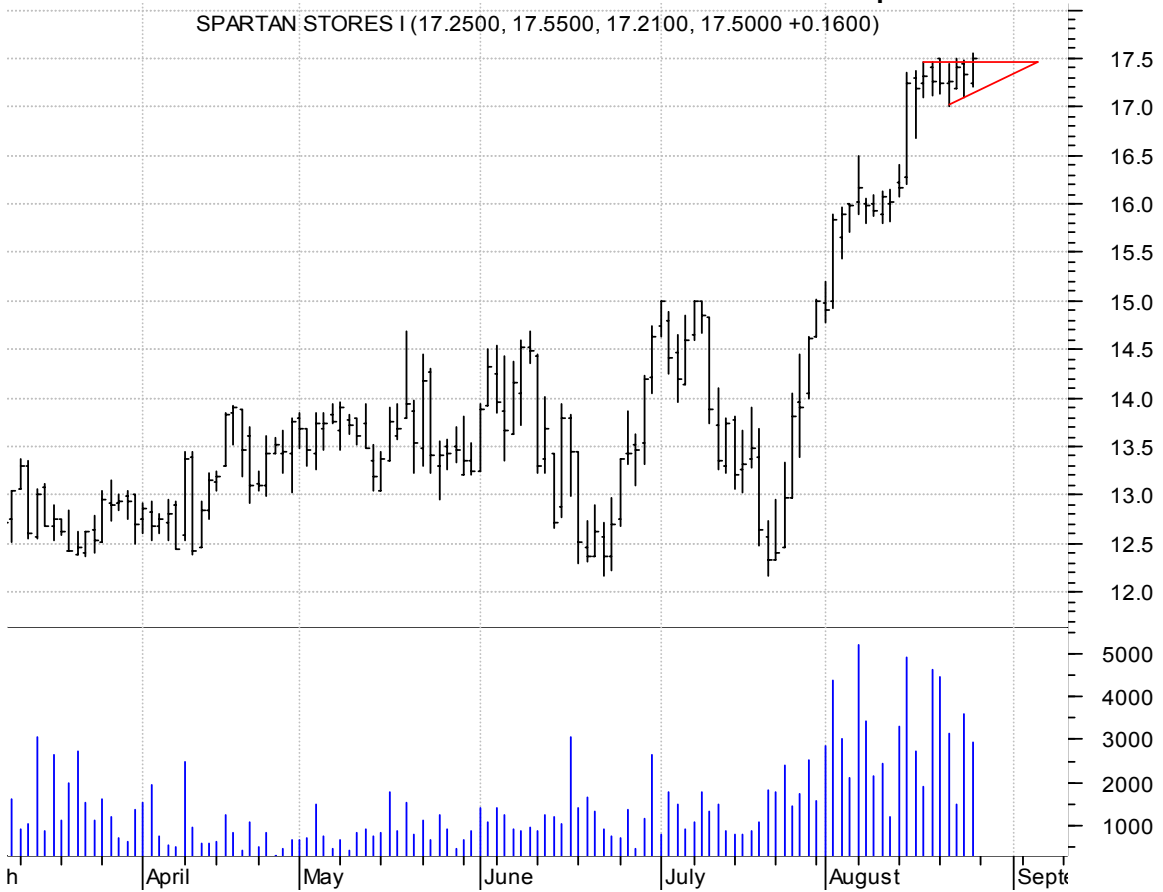


RAH rectangle preceded by 'pole-like' move / buy on upside brkout on increased volume

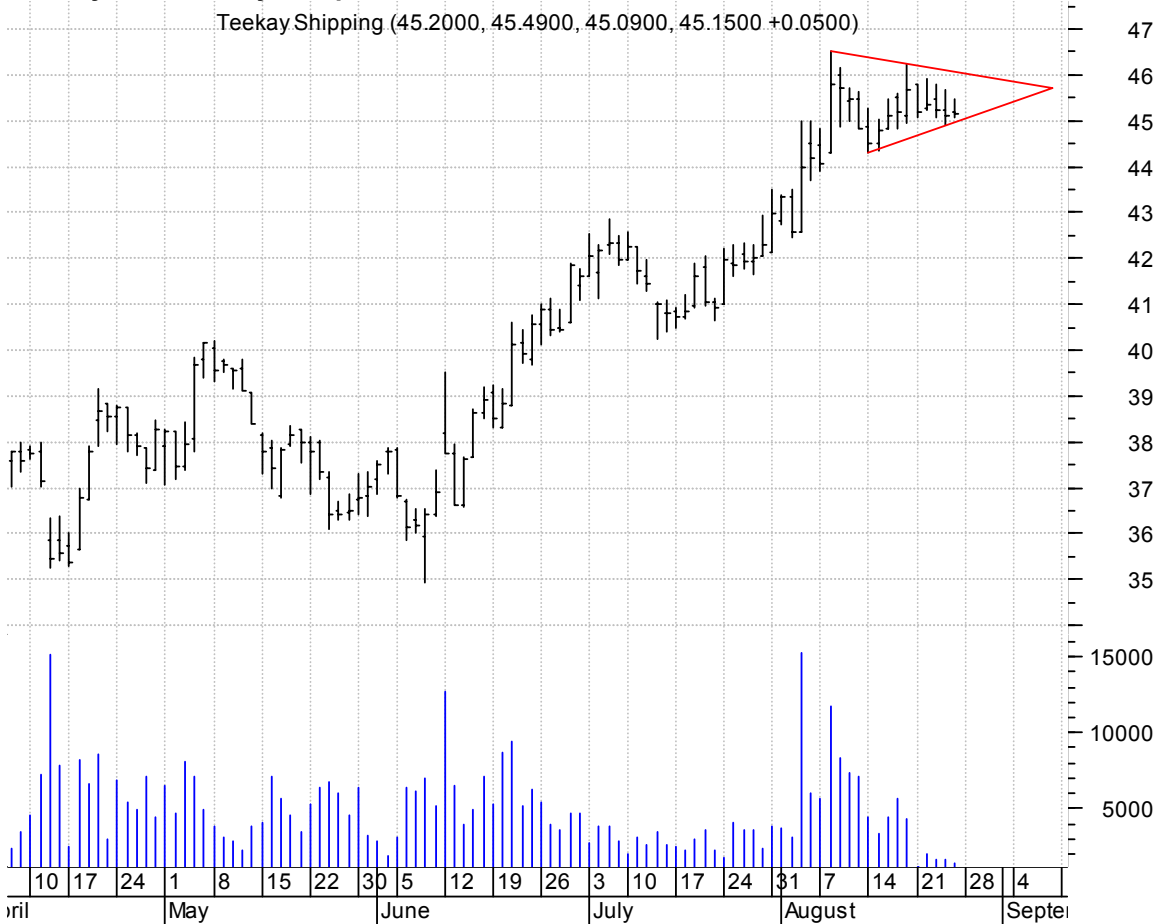
Ralcorp Holdings (49.2200, 49.5200, 48.8000, 49.2200 -0.0100)



SPTN asc. tri. preceded by 'pole-like' move and brkout / buy and use bottom of pattern (asc. trendline) as a failure point

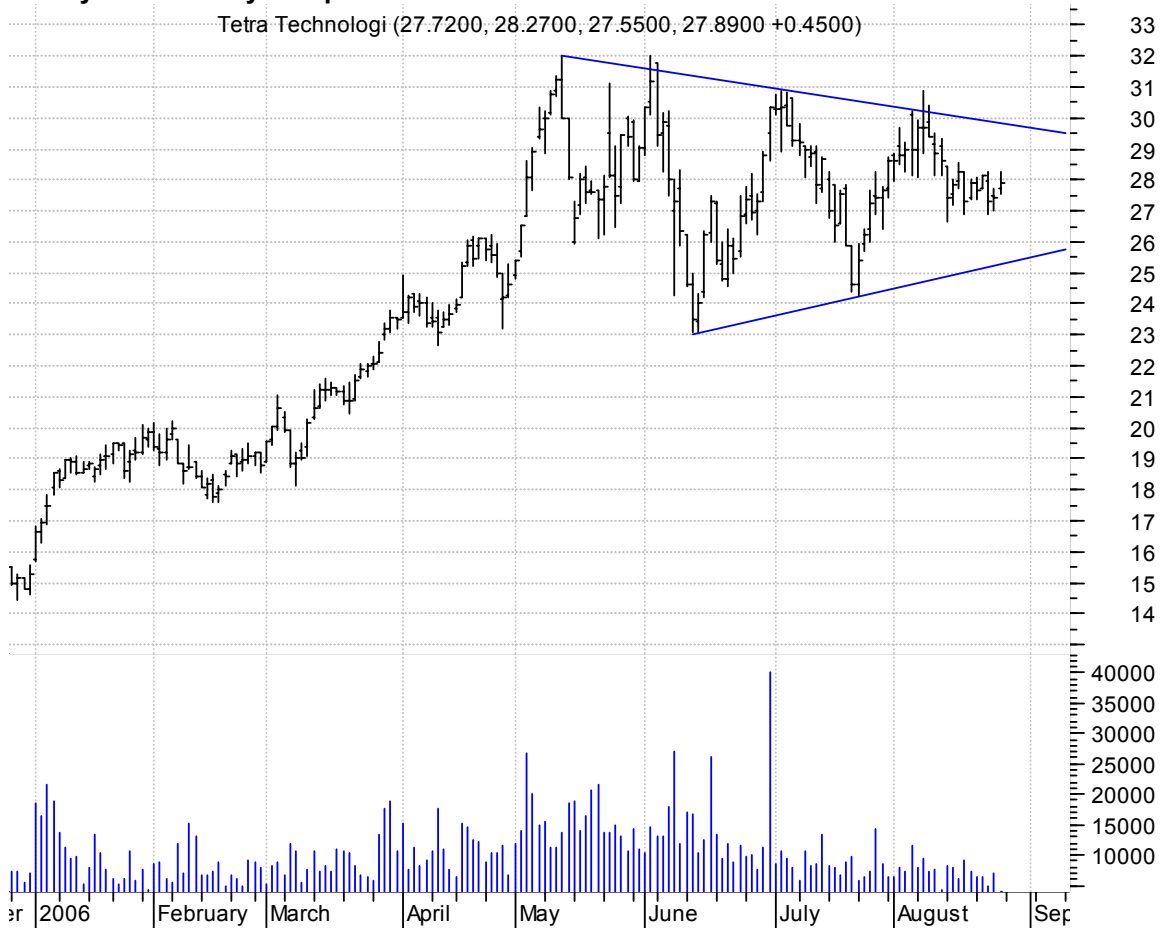


TKY symm. tri. / buy on upside brkout on increased volume



TTI symm. tri. / buy on upside brkout on increased volume

Tetra Technologi (27.7200, 28.2700, 27.5500, 27.8900 +0.4500)



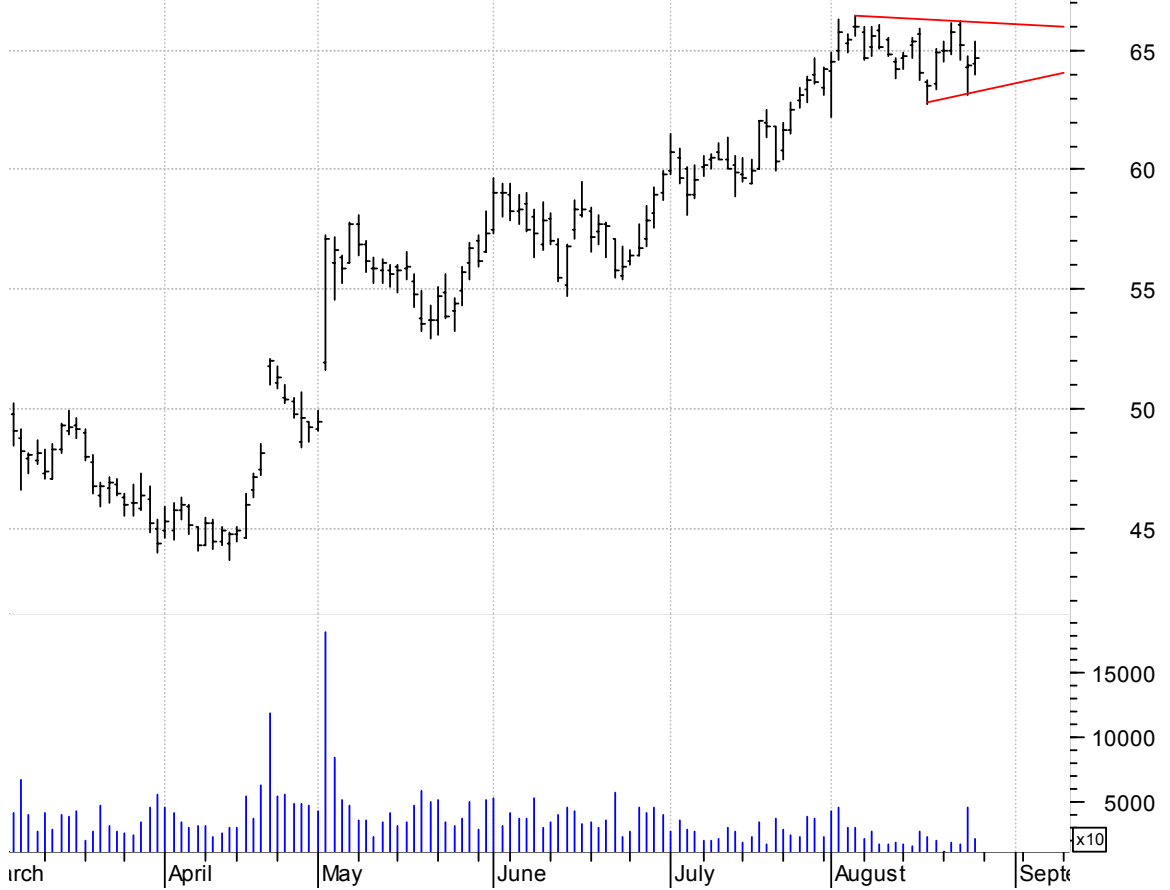
TTIL symm. tri. / buy on upside brkout on increased volume

TTI Team Telecom (4.6800, 4.8000, 4.6300, 4.7100 +0.0100)



TXU symm. tri. / buy on upside brkout on increased volume

TXU Corp:NYSE (64.4500, 65.3400, 64.0000, 64.6400 +0.2900)



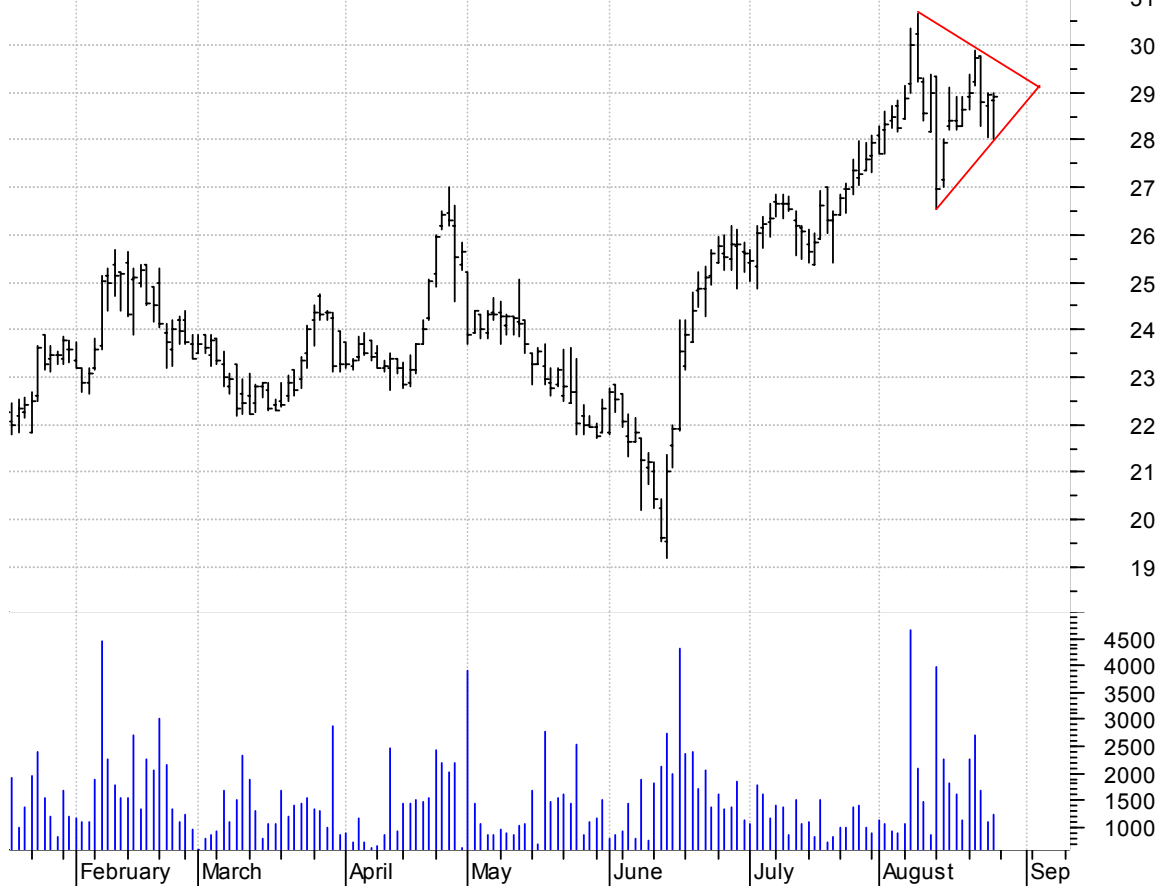
VDSI symm. tri. / buy on upside brkout on increased volume

Vasco Data Secur (8.6500, 8.8900, 8.6500, 8.8000 +0.1400)



VLCCF symm. tri. / buy on upside brkout on increased volume

Knightsbridge Ta (28.8200, 29.0000, 28.0300, 28.9000 -0.0300)



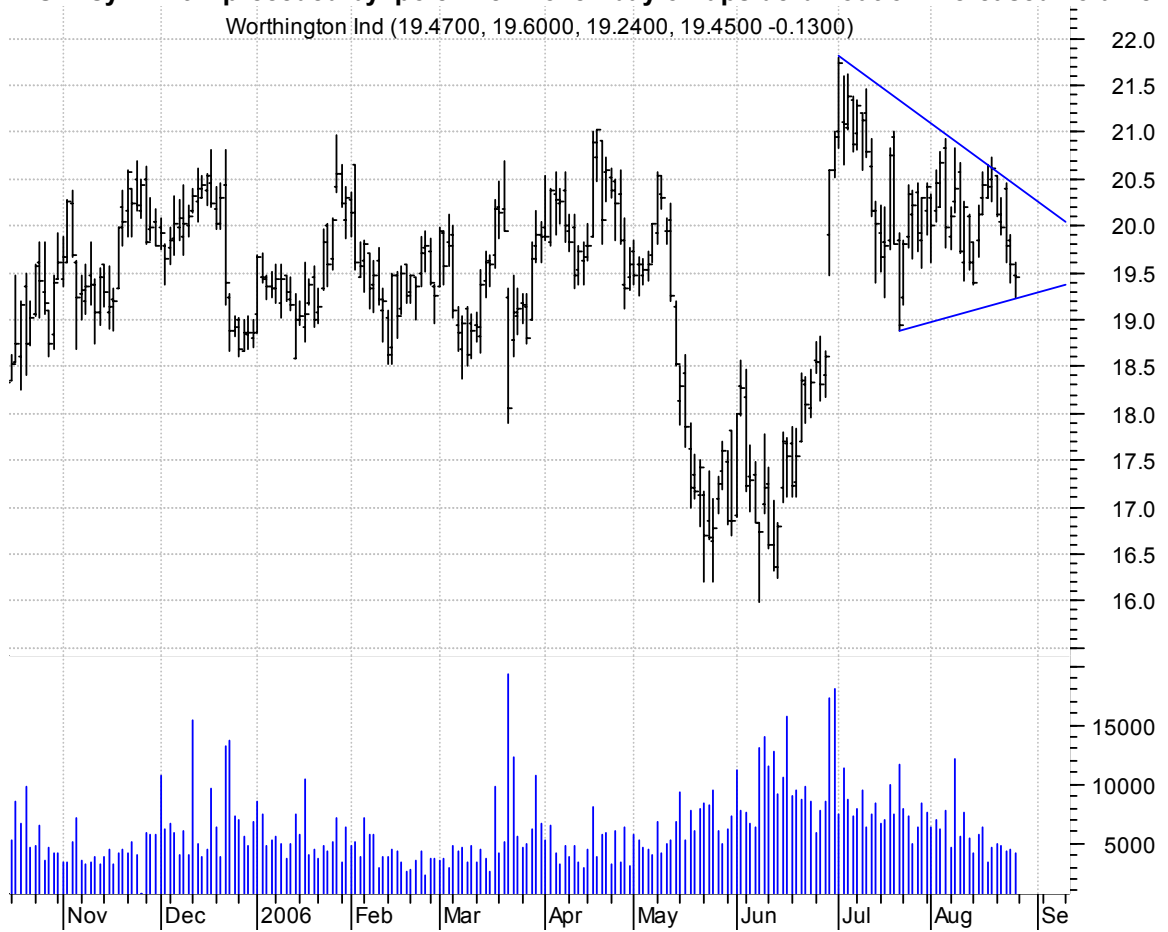
VLO symm. tri. / buy on upside brkout on increased volume

Valero Energy Co (62.9500, 63.7000, 62.2100, 62.4000 -0.1700)



WOR symm. tri. preceded by 'pole-like' move / buy on upside brkout on increased volume

Worthington Ind (19.4700, 19.6000, 19.2400, 19.4500 -0.1300)



chartpatterns.com
Chart Pattern Analysis for Timing the Markets

KMatras@aol.com