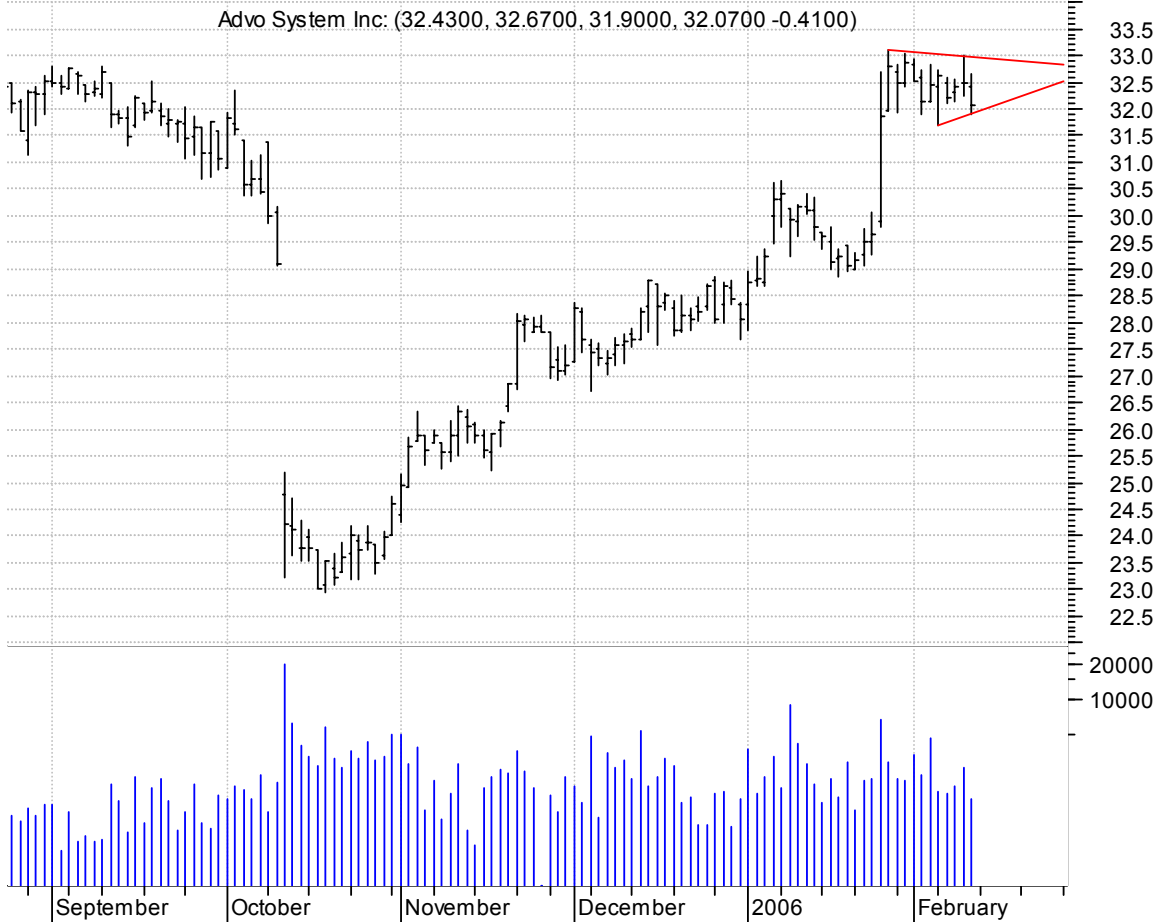


**AD symm. tri. preceded by 'pole-like' move / buy on upside brkout on increased volume**

Advo System Inc: (32.4300, 32.6700, 31.9000, 32.0700 -0.4100)



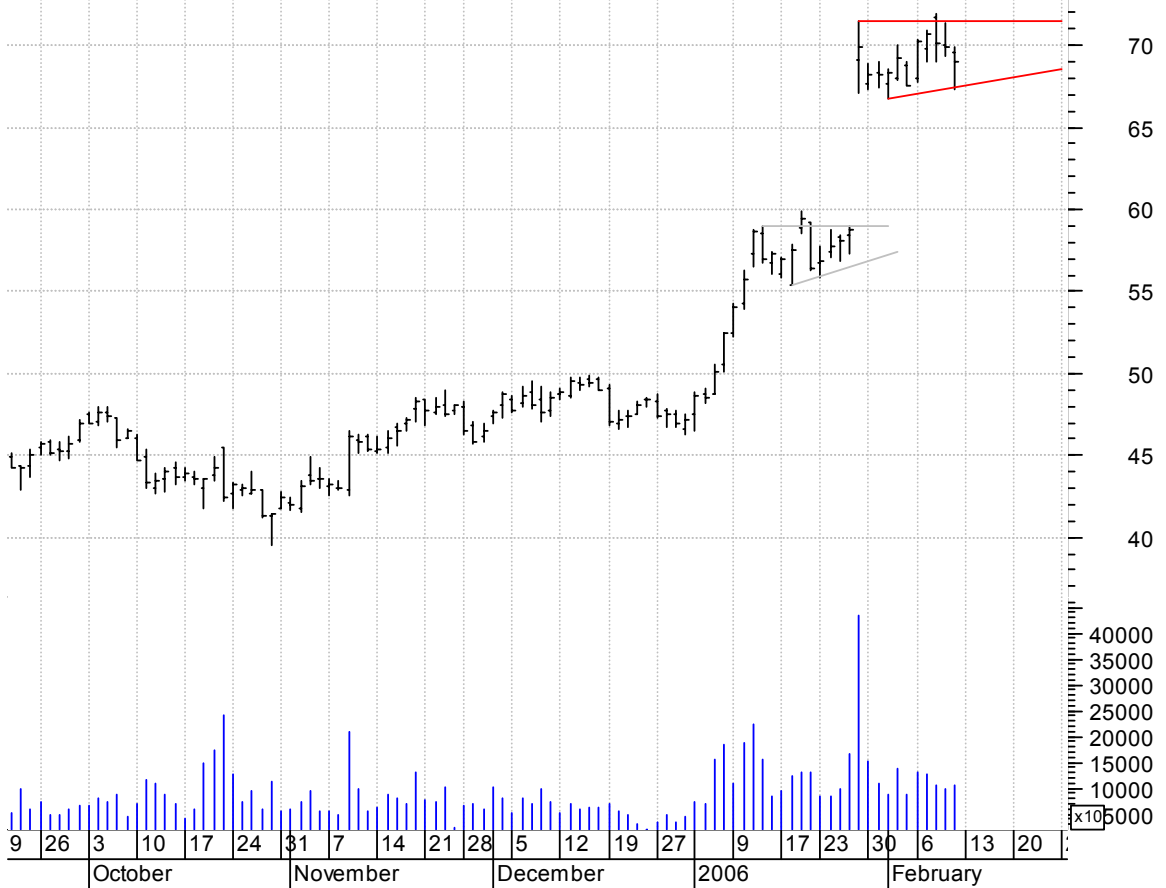
**AXP symm. tri. / buy on upside brkout on increased volume**

Amer Express:NYS (53.1400, 53.4400, 52.7200, 53.0000 -0.0400)



**BRCM sloppy asc. tri. preceded by 'pole-like' move / buy on upside breakout on increased volume**

Broadcom Corp CI (69.6100, 69.8500, 67.3200, 69.0100 -0.8600)



**DLB symm. tri. preceded by 'pole-like' move / buy on upside breakout on increased volume**

DOLBY LABORATORI (20.2000, 20.3500, 20.1400, 20.3500 +0.1300)



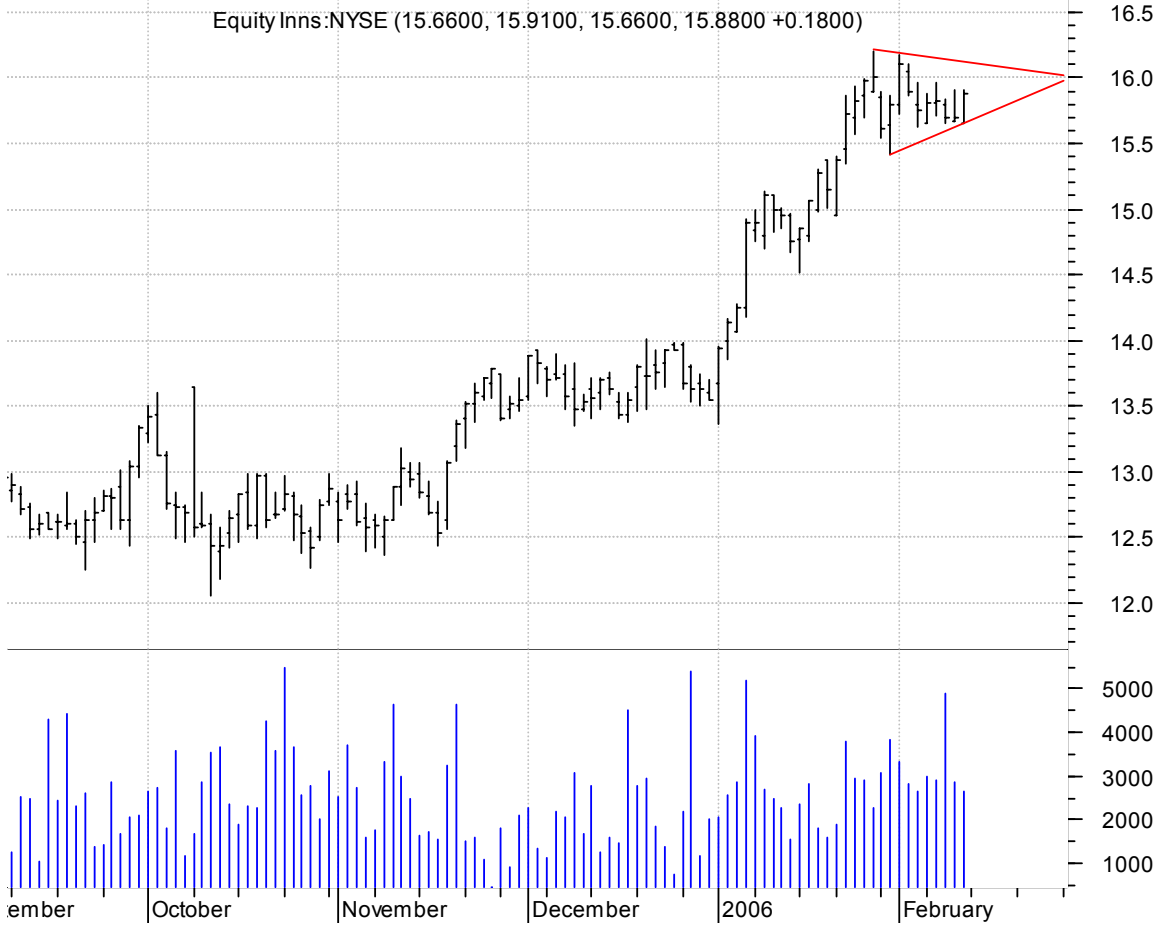
**ELMG symm. tri. / buy on upside breakout on larger than normal volume**

Electromagnetic (17.4500, 18.4400, 17.3500, 17.9000 +1.2000)



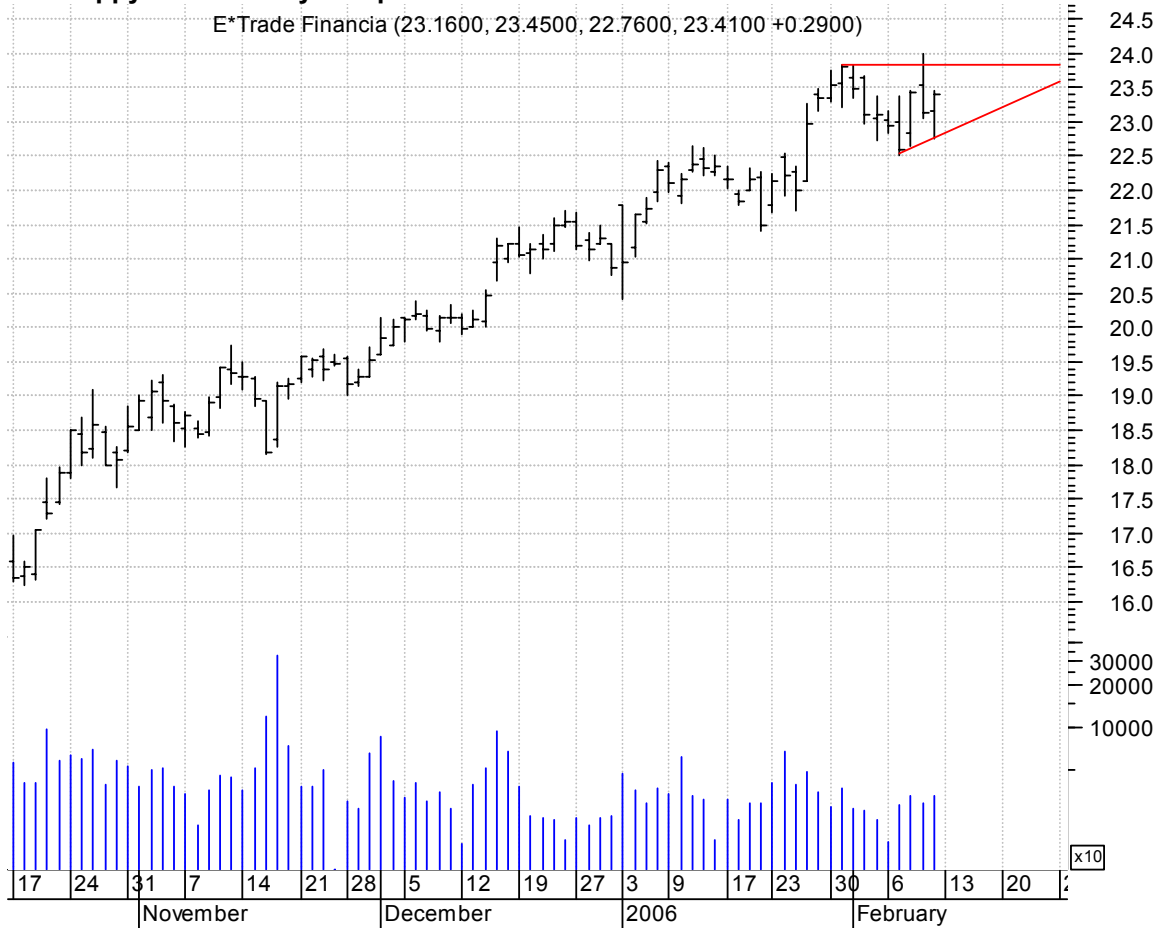
**ENN symm. tri. / buy on upside breakout on increased volume**

Equity Inns:NYSE (15.6600, 15.9100, 15.6600, 15.8800 +0.1800)



**ET sloppy asc. tri. / buy on upside brkout on increased volume**

E\*Trade Financia (23.1600, 23.4500, 22.7600, 23.4100 +0.2900)



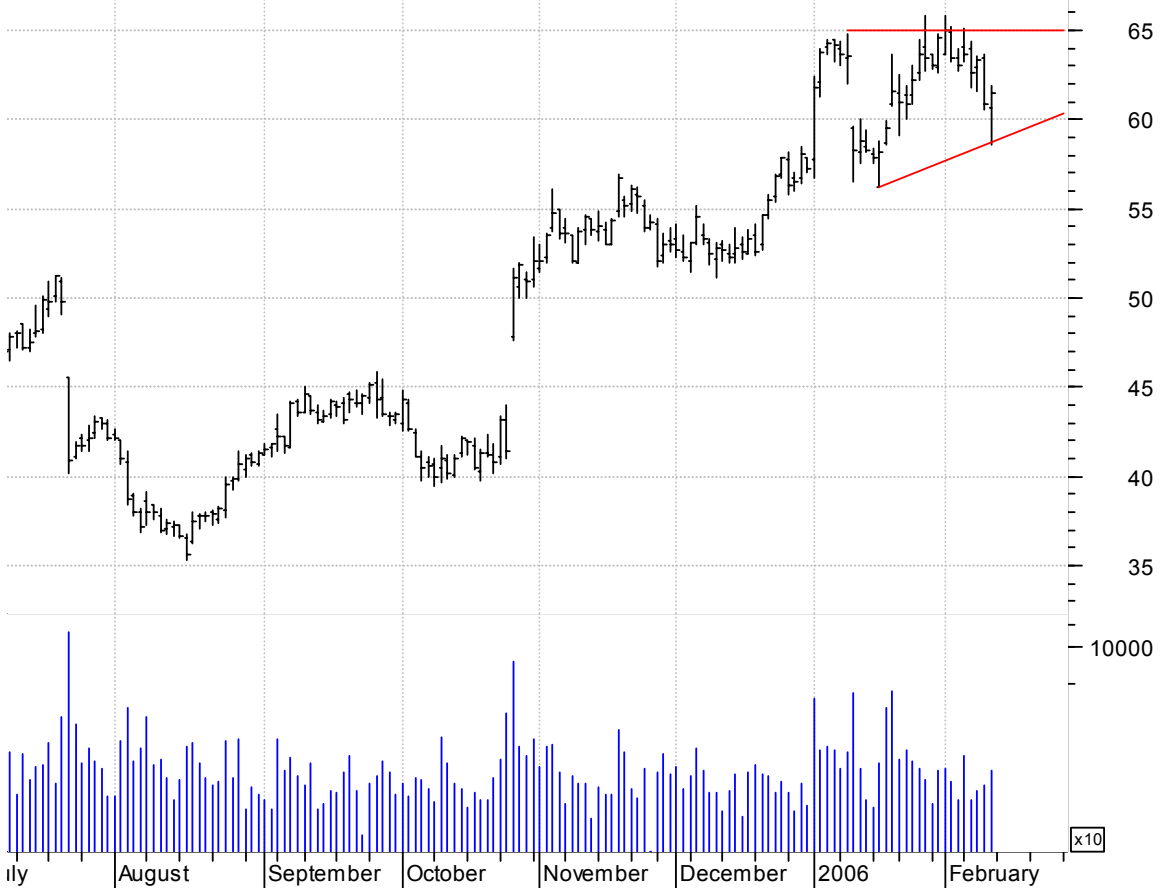
**EZPW sloppy bullish flag / buy on upside brkout on increased volume**

Ezcorp Inc:OTC (21.3800, 21.5800, 20.1200, 21.5300 +0.2100)



**FFIV sloppy asc. tri. / buy on upside brkout on larger than normal volume**

F5 Network Inc:O (60.6300, 61.9100, 58.6000, 61.4400 +0.5600)



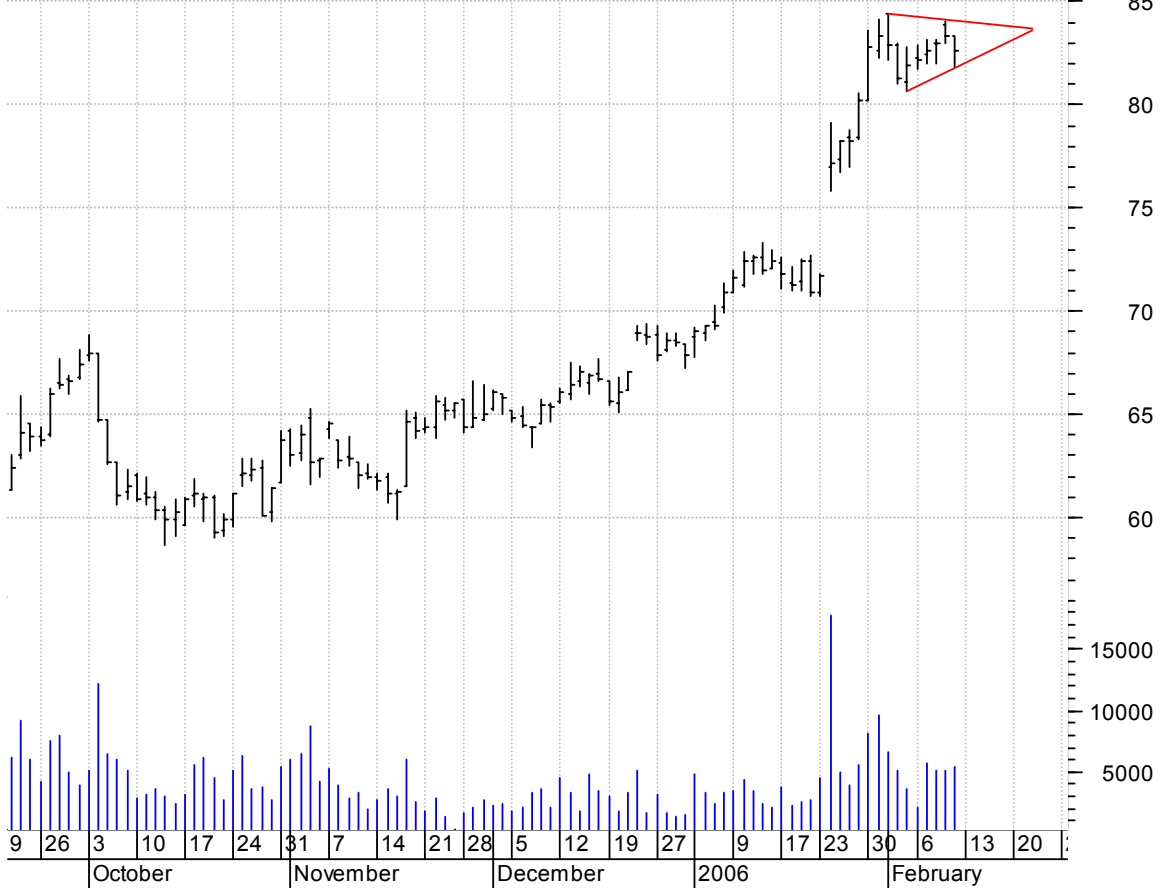
**IDTI sloppy asc. tri. / buy on upside brkout on increased volume**

Integrated Devic (14.6600, 14.7400, 14.1900, 14.5400 -0.1900)



**JEC symm. tri. / buy on upside breakout on increased volume**

Jacobs Engineeri (83.3000, 83.3000, 81.8000, 82.6200 -0.6800)



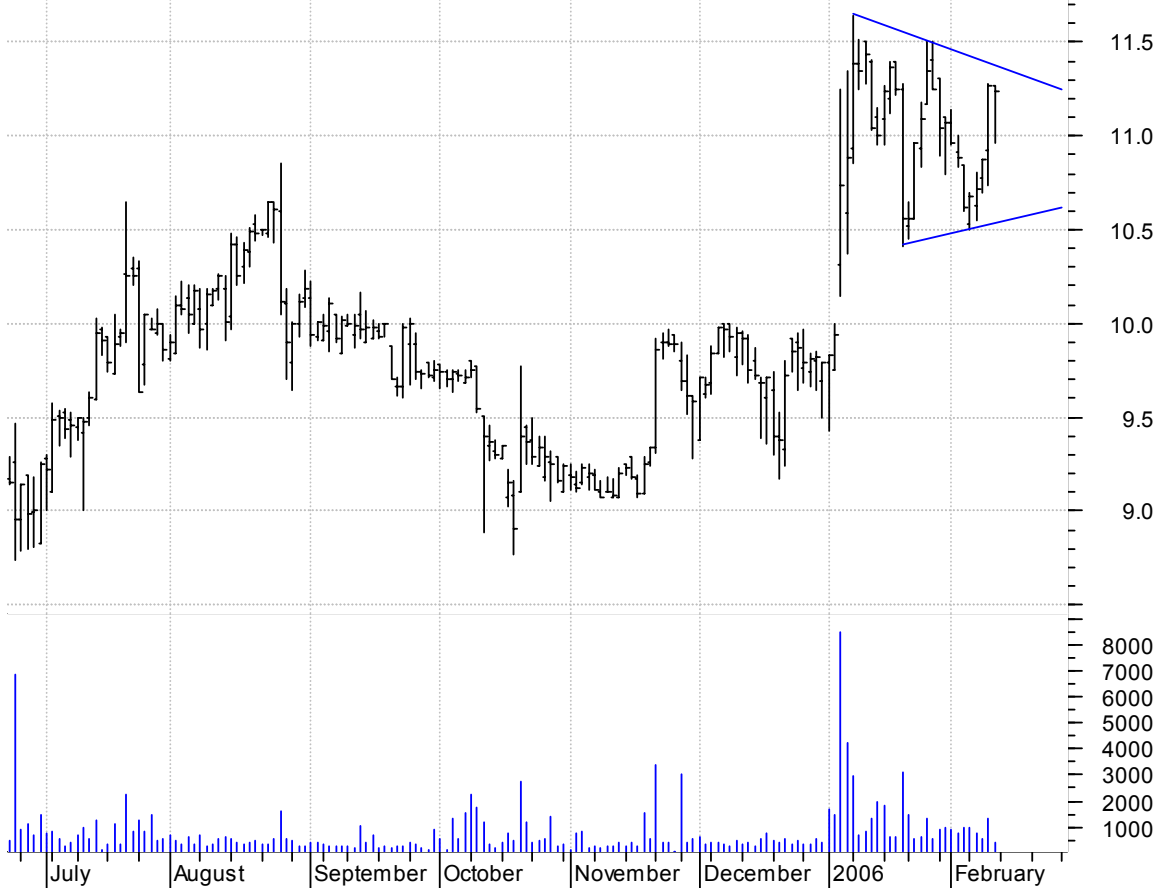
**KOMG bullish flagging / buy on upside breakout on increased volume**

KOMAG INC.:OTC (46.3400, 46.7200, 44.4100, 46.6000 +0.2100)



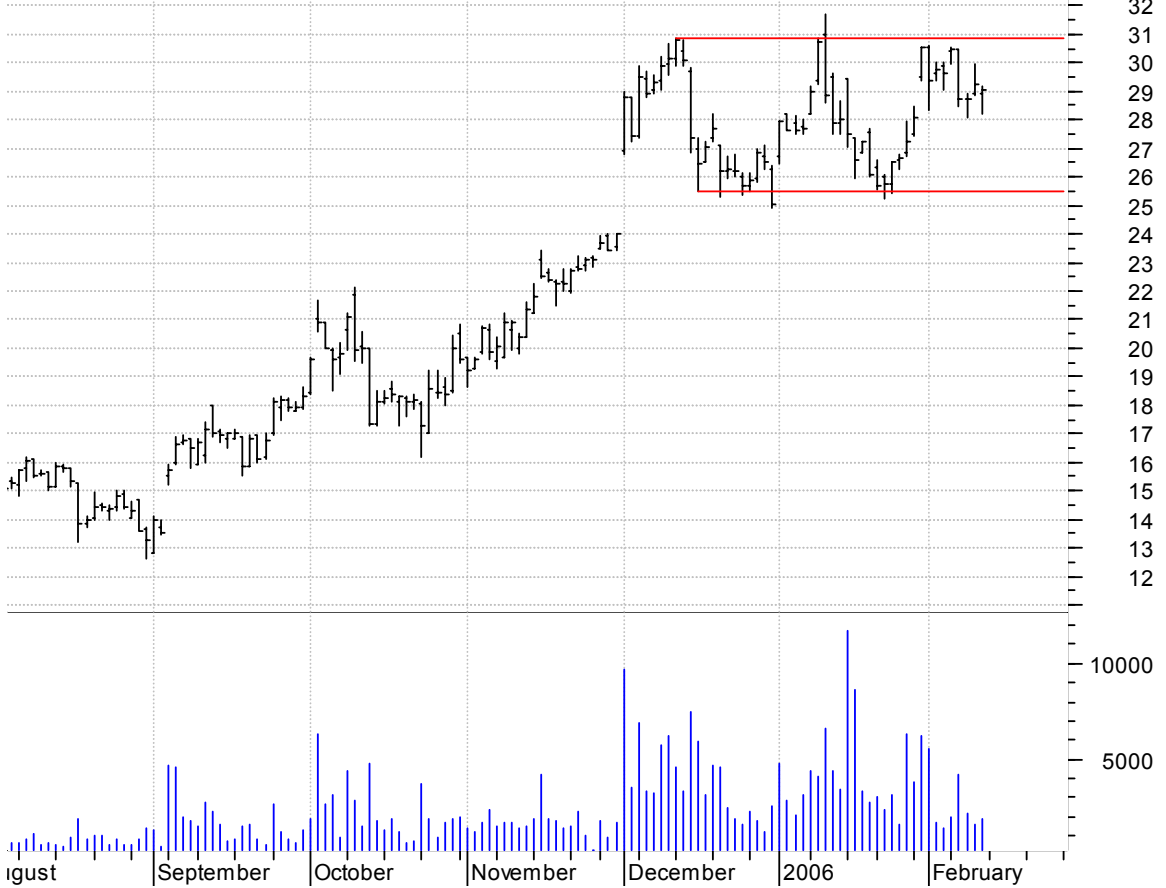
**KVHI symm. tri. / buy on upside breakout on increased volume**

KVH Industries:O (11.2700, 11.2700, 10.9600, 11.2400 -0.0300)



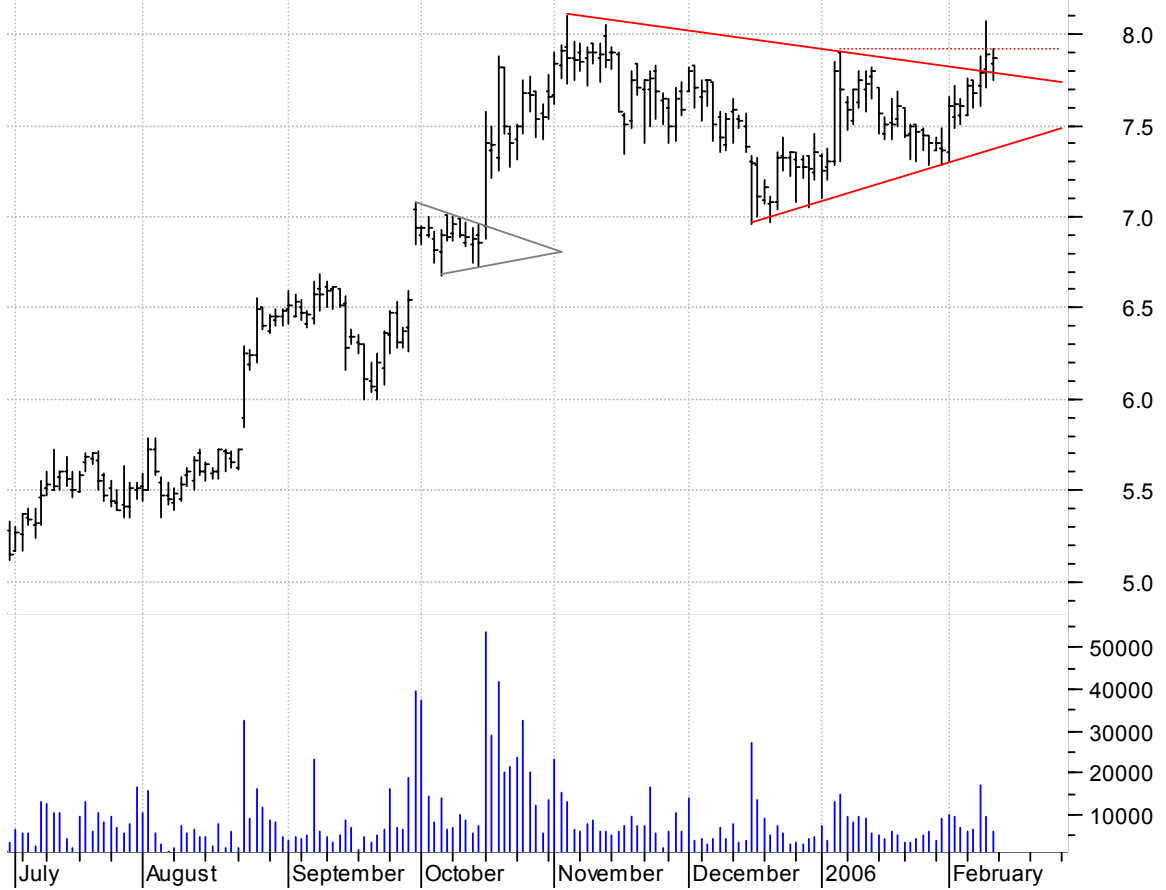
**LMS rectangle / buy on upside breakout on increased volume**

Lamson & Session (28.9500, 29.2000, 28.1800, 29.0300 -0.2100)



**LWSN symm. tri. / buy on upside brkout thru dotted red line on increased volume**

LAWSON SOFTWARE (7.8400, 7.9200, 7.7500, 7.8700 -0.0200)



**OSK sloppy asc. tri. preceded by 'pole-like' move / buy on upside brkout on increased volume**

Oshkosh Truck Cp (53.9100, 54.5000, 53.4500, 54.5000 +0.4900)





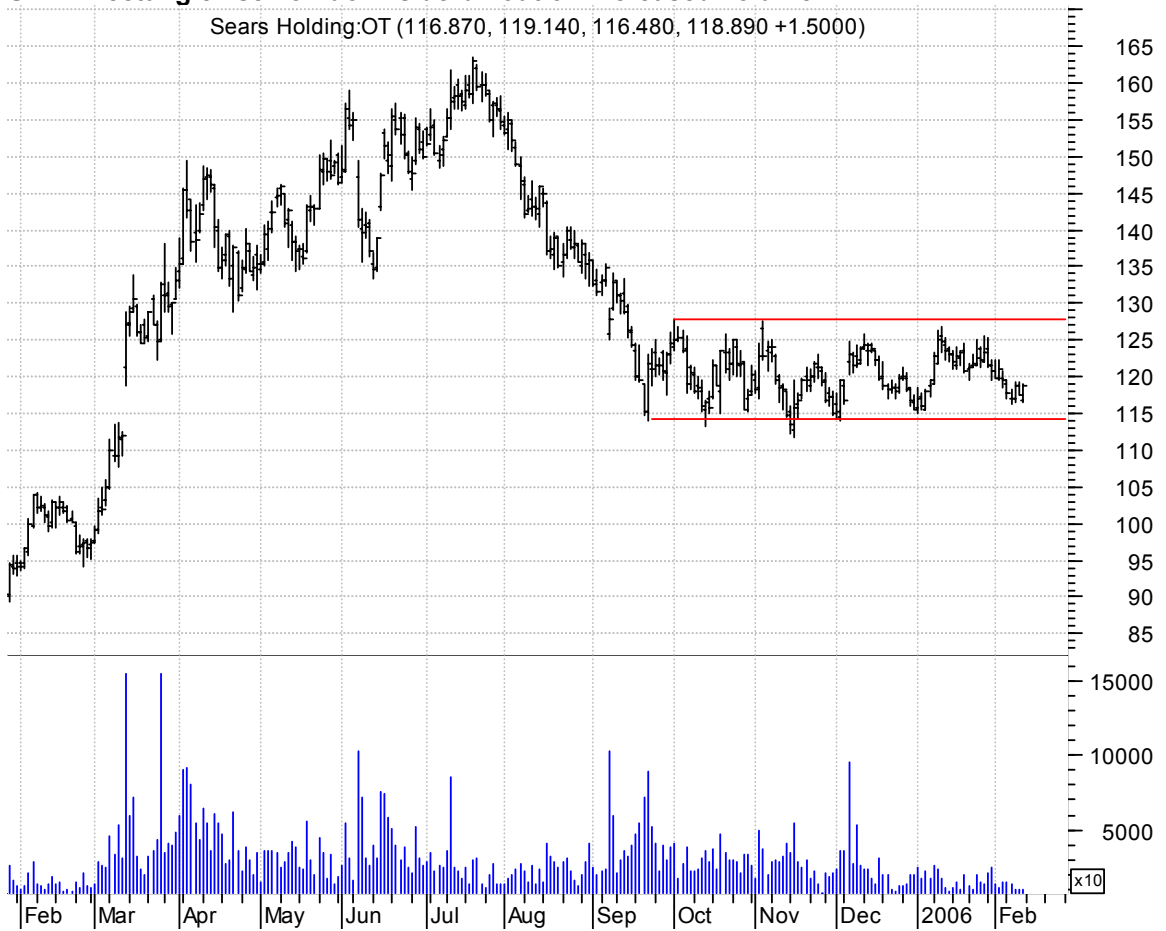
**PWAV sloppy asc. tri. / buy on upside brkout on increased volume**

Powerwave Techno (14.5300, 14.5700, 14.0200, 14.3500 -0.2600)



**SHLD rectangle / sell on downside brkout on increased volume**

Sears Holding:OT (116.870, 119.140, 116.480, 118.890 +1.5000)



**SIRF bullish flag / buy on upside on increased volume**

SIRF TECHNOLOGY (36.4500, 37.2700, 35.1200, 36.7900 +0.4200)



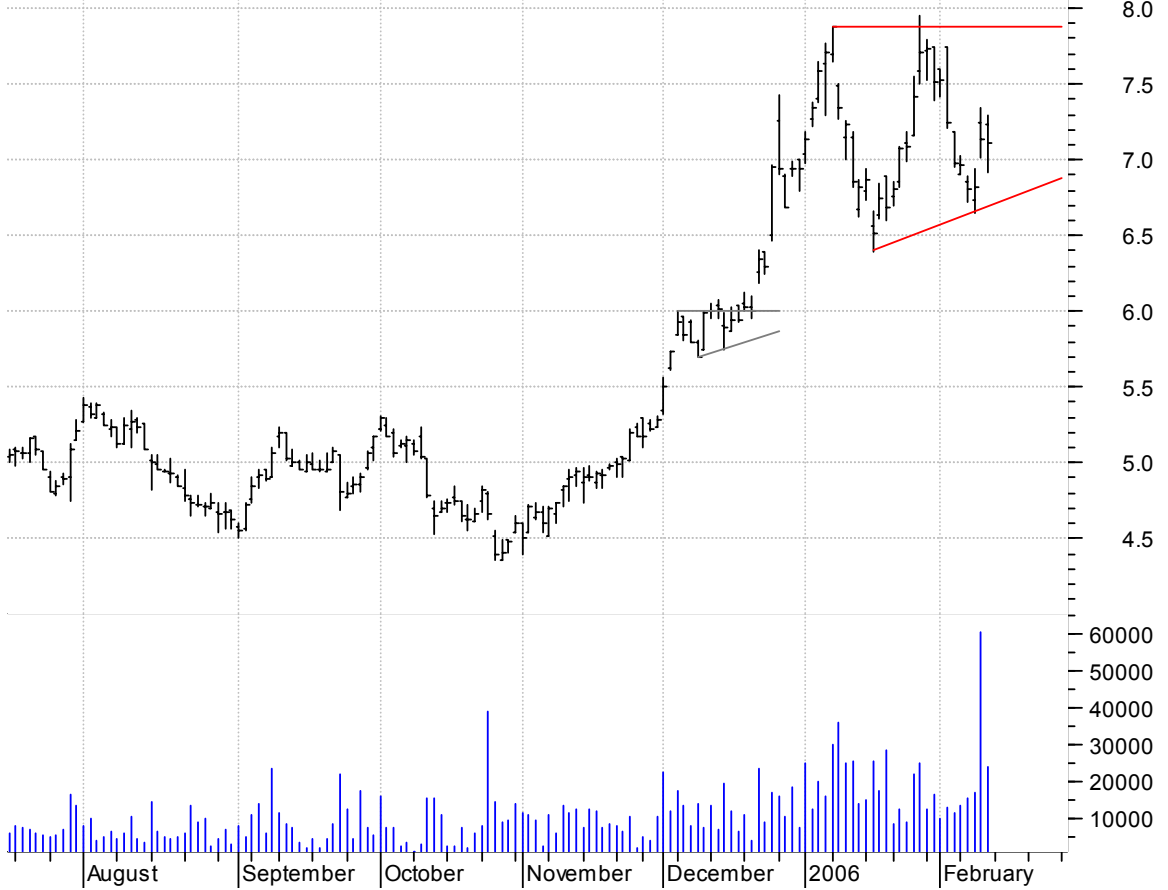
**SNHY symm. tri. / buy on upside brkout on increased volume**

Sun Hydraulics C (22.3000, 22.5800, 21.8000, 21.8600 -0.5300)



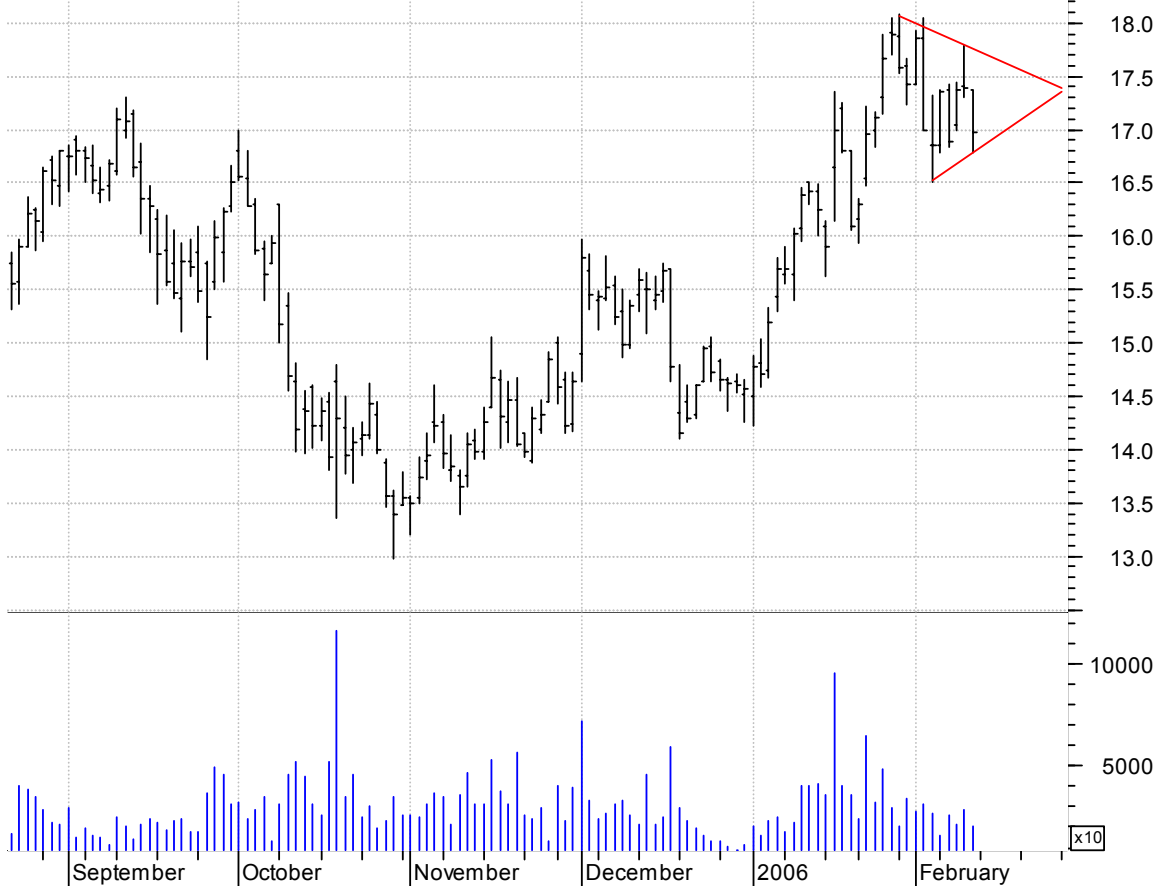
**SPIL asc. tri. / buy on upside breakout on increased volume**

Siliconware Prec (7.2300, 7.3000, 6.9200, 7.1100 -0.0300)



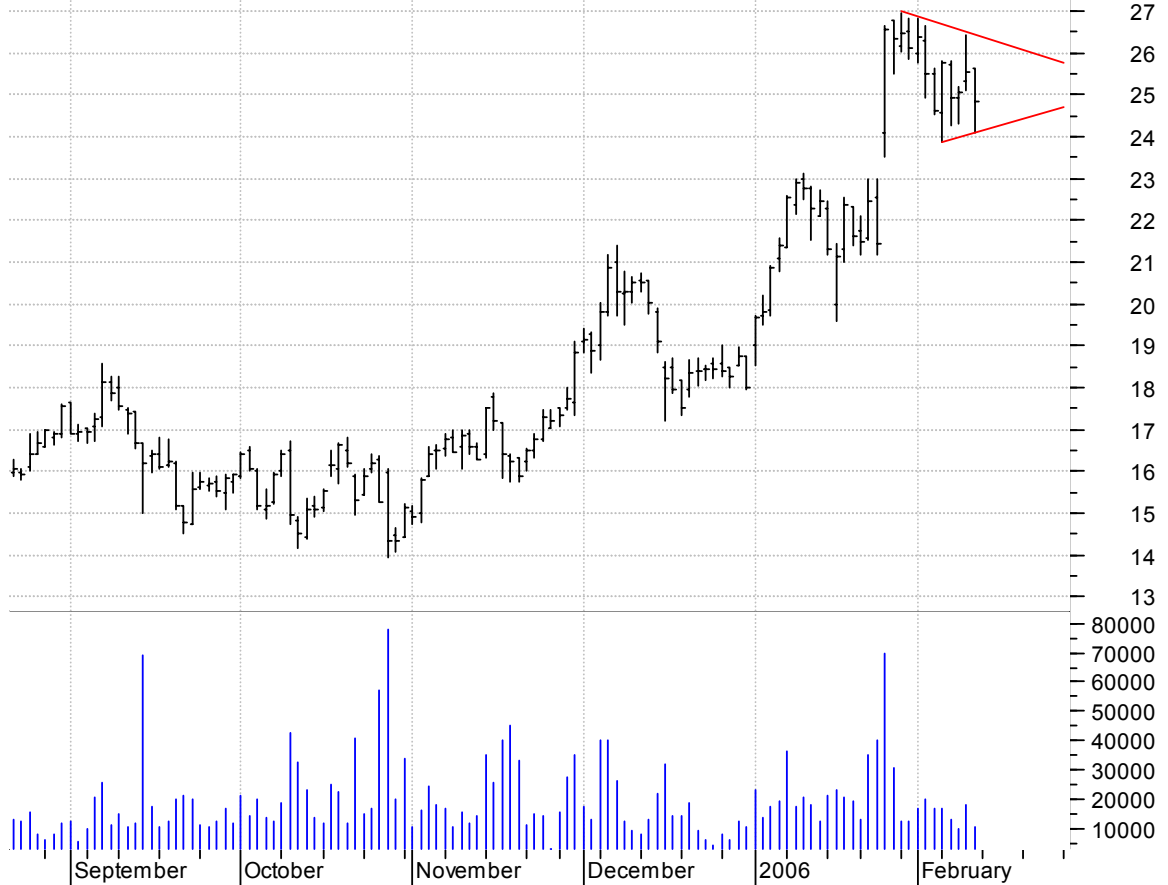
**TER symm. tri. / buy on upside breakout on increased volume**

Teradyne Inc.:NYS (17.3800, 17.3800, 16.7800, 16.9700 -0.4200)



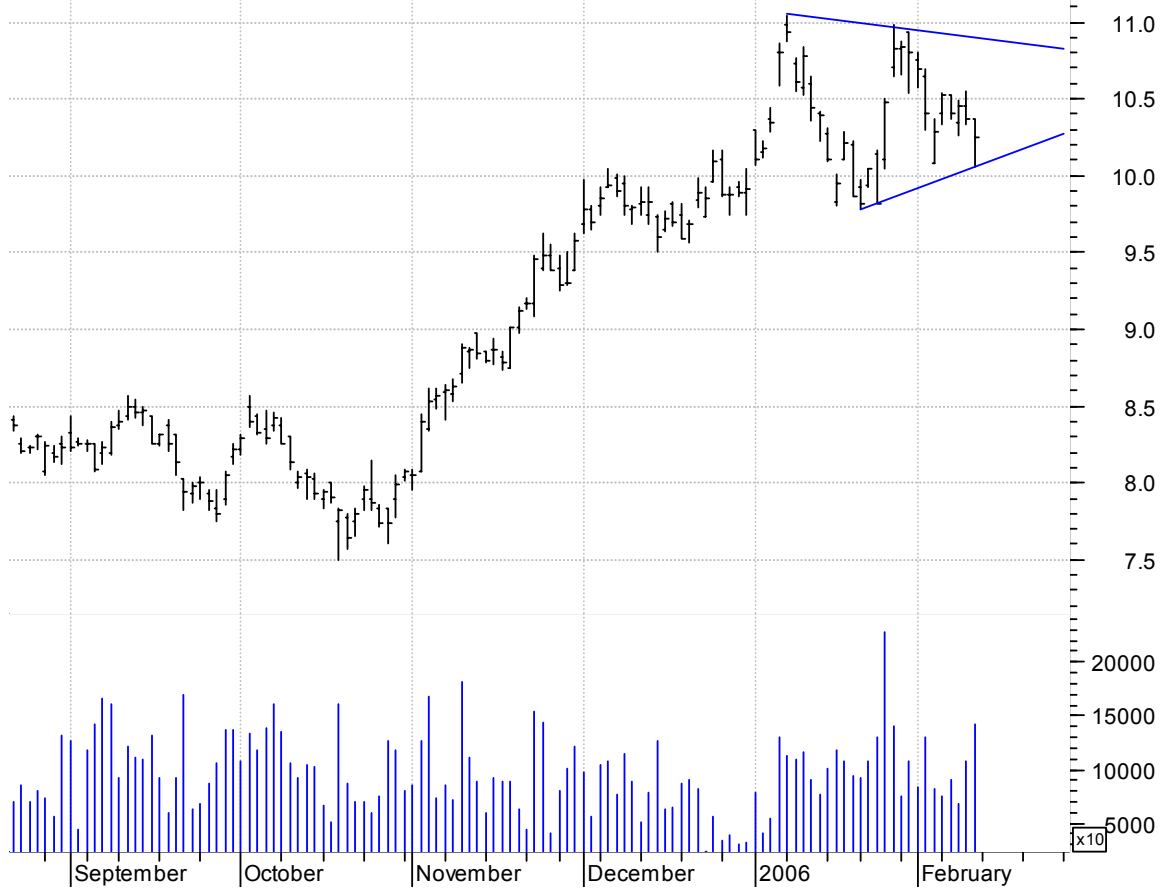
**TRID symm. tri. preceded by 'pole-like' move / buy on upside brkout on increased volume**

Trident Microsys (25.6400, 25.6400, 24.1000, 24.8500 -0.6800)



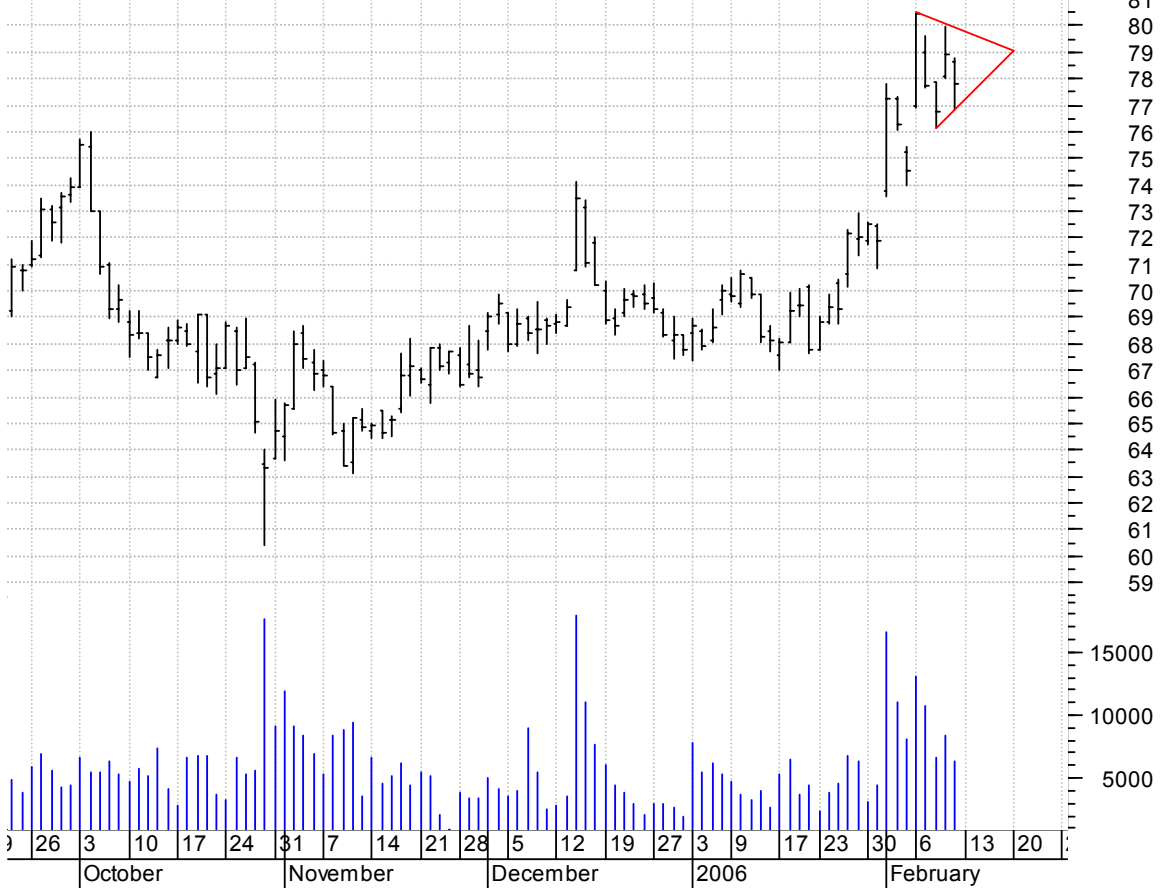
**TSM symm. tri. / buy on upside brkout on larger than normal volume**

Taiwan Semicondu (10.3700, 10.3700, 10.0600, 10.2500 -0.1200)



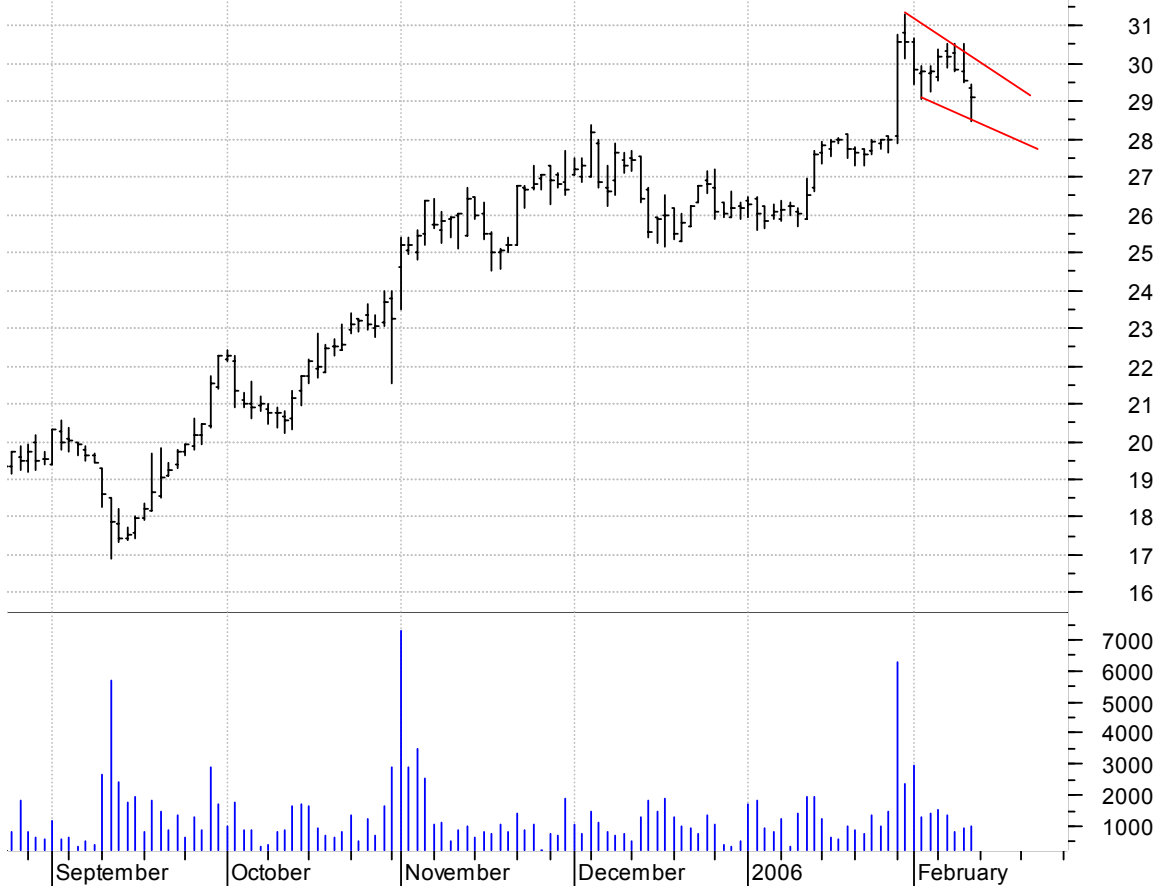
**VMC symm. tri. preceded by 'pole-like' move / buy on upside brkout on increased volume**

Vulcan Materials (78.6500, 78.7600, 76.8300, 77.7800 -1.1700)



**VTAL falling wedge / buy on upside brkout on increased volume**

Vital Images Inc (29.3600, 29.4400, 28.4800, 29.0800 -0.4800)



### WCC falling wedge preceded by 'pole-like' move / buy on upside brkout on increased volume



### WITS symm. tri. / buy on upside brkout on increased volume



## ZRAN asc. tri. / buy on upside brkout on increased volume



**chartpatterns.com**

Chart Pattern Analysis for Timing the Markets

[KMatras@aol.com](mailto:KMatras@aol.com)