

**ACGL symm. tri. / buy on upside brkout on increased volume**

Arch Capital Gro (59.1800, 59.3000, 58.8500, 58.8500 -0.3300)



**ACLI symm. tri. / buy on upside brkout on increased volume**

AMERICAN COMML L (55.8800, 56.1300, 54.9800, 56.0400 +0.5400)



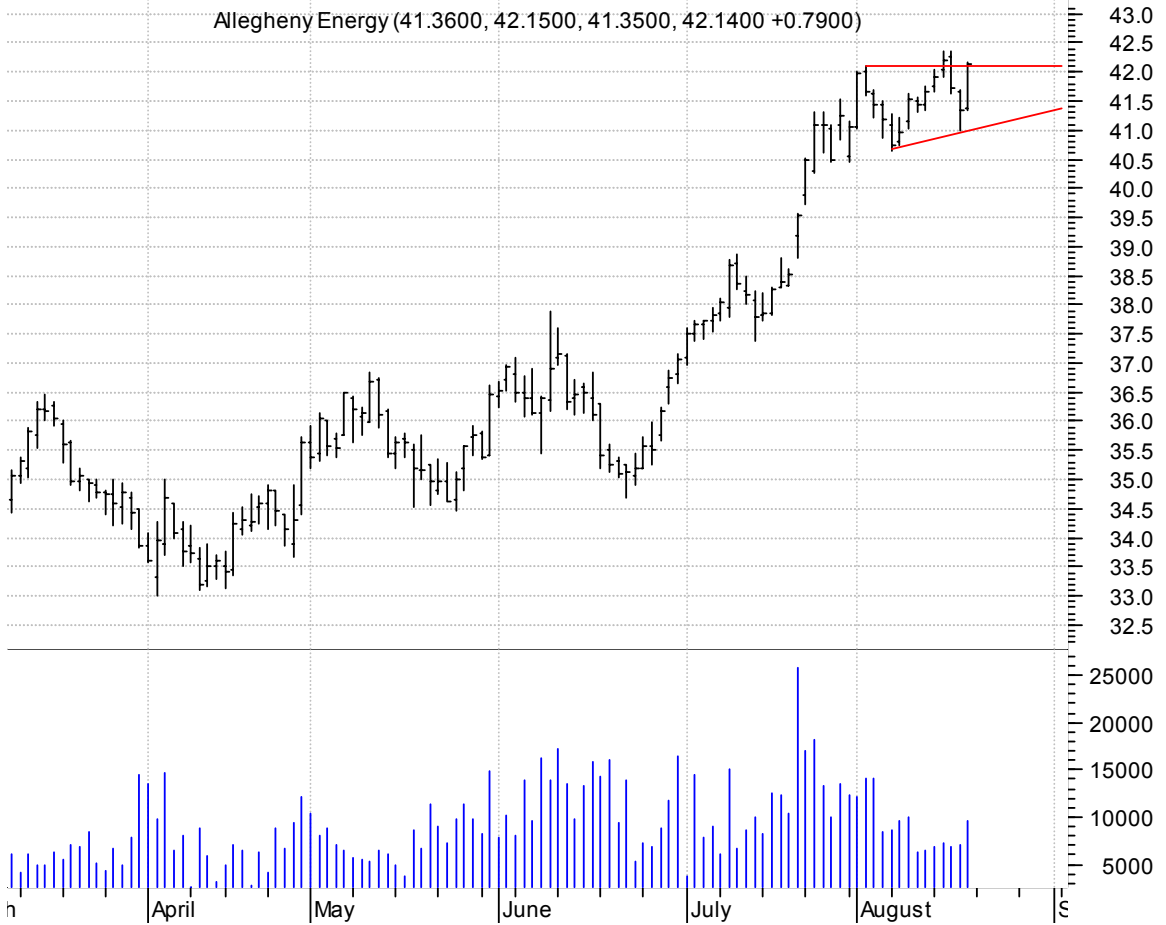
**ASH symm. tri. (discounting spike day) / buy on upside brkout on increased volume**

Ashland Oil Inc: (65.3200, 66.5400, 65.2800, 66.3500 +1.0300)



**AYE asc. tri. brkout / buy and use bottom of pattern (asc. trendline) as a failure point**

Allegheny Energy (41.3600, 42.1500, 41.3500, 42.1400 +0.7900)



**AZPN symm. tri. / buy on upside brkout on increased volume**

Aspen Technology (12.7800, 12.7800, 12.1200, 12.4900 -0.2300)

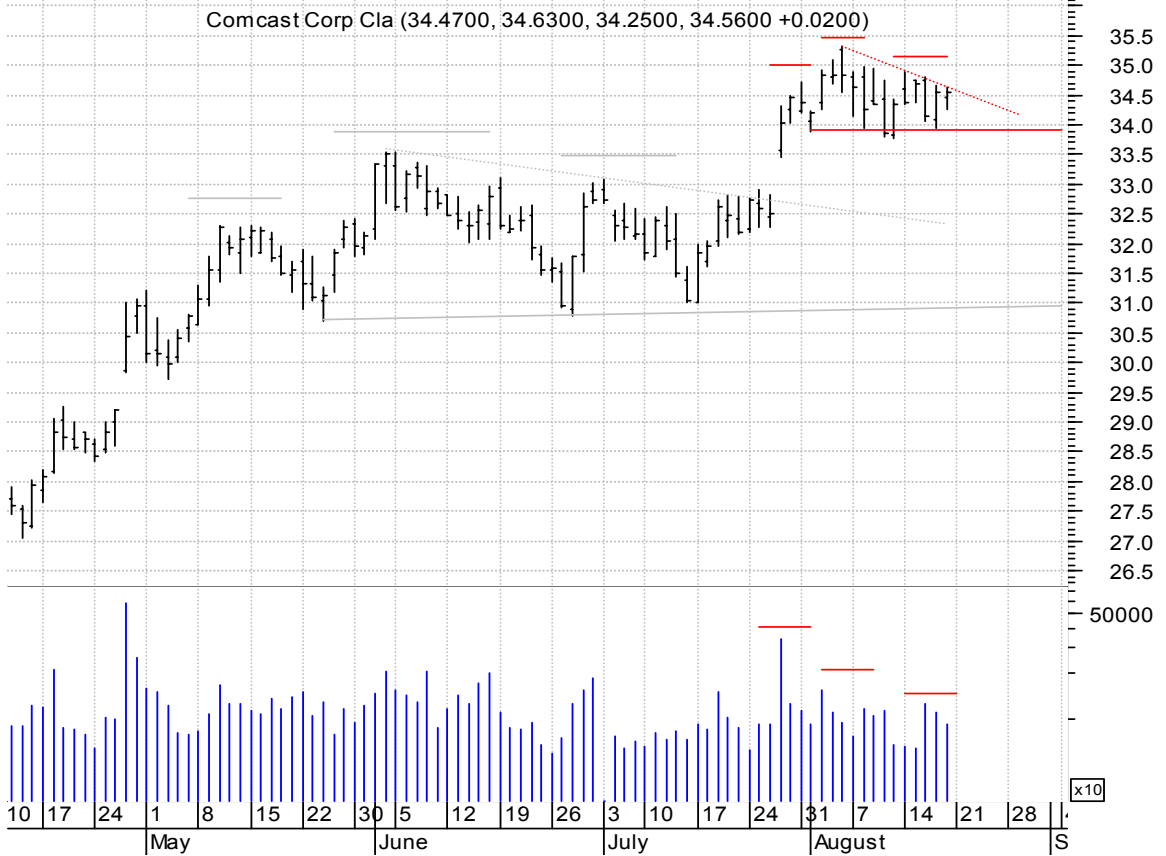


**BRLI symm. tri. / buy on upside brkout on increased volume**

Bio Reference La (22.0100, 22.0500, 21.7000, 21.8800 -0.1000)

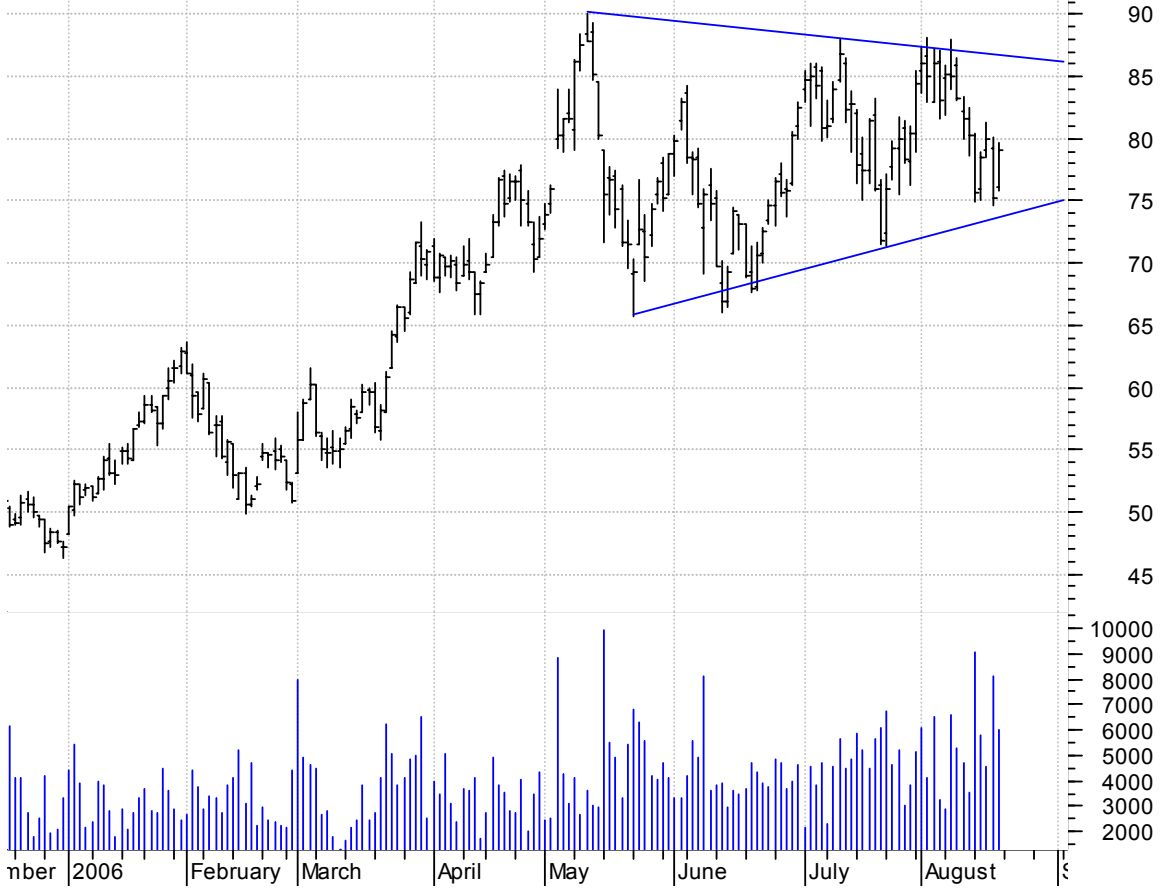


**CMCSA h. & sh. / 1) sell on downside brkout on increased volume or buy on upside brkout thru dotted red line on increased volume [h. & sh. failures often times brkout sharply to the upside]**



**DRQ symm. tri. / buy on upside brkout on increased volume**

Dril-Quip Inc:NY (76.0800, 79.6100, 75.7500, 79.1400 +3.9000)



**FARO asc. tri. preceded by 'pole-like' move / buy on upside brkout on increased volume**

Faro Technologie (17.8000, 17.8000, 17.3600, 17.4800 -0.3400)



**FCH asc. tri. / buy on upside brkout on increased volume**

Felcor Lodging T (21.6200, 21.6200, 21.2200, 21.4300 -0.0800)



**FTI symm. tri. / buy on upside brkout on increased volume**

FMC TECHNOLOGIES (60.8000, 62.2800, 60.2000, 61.9800 +1.4300)



### GDI falling wedge / buy on upside breakout on increased volume

Gardner Denver I (37.9200, 37.9500, 36.7900, 37.0000 -0.8900)



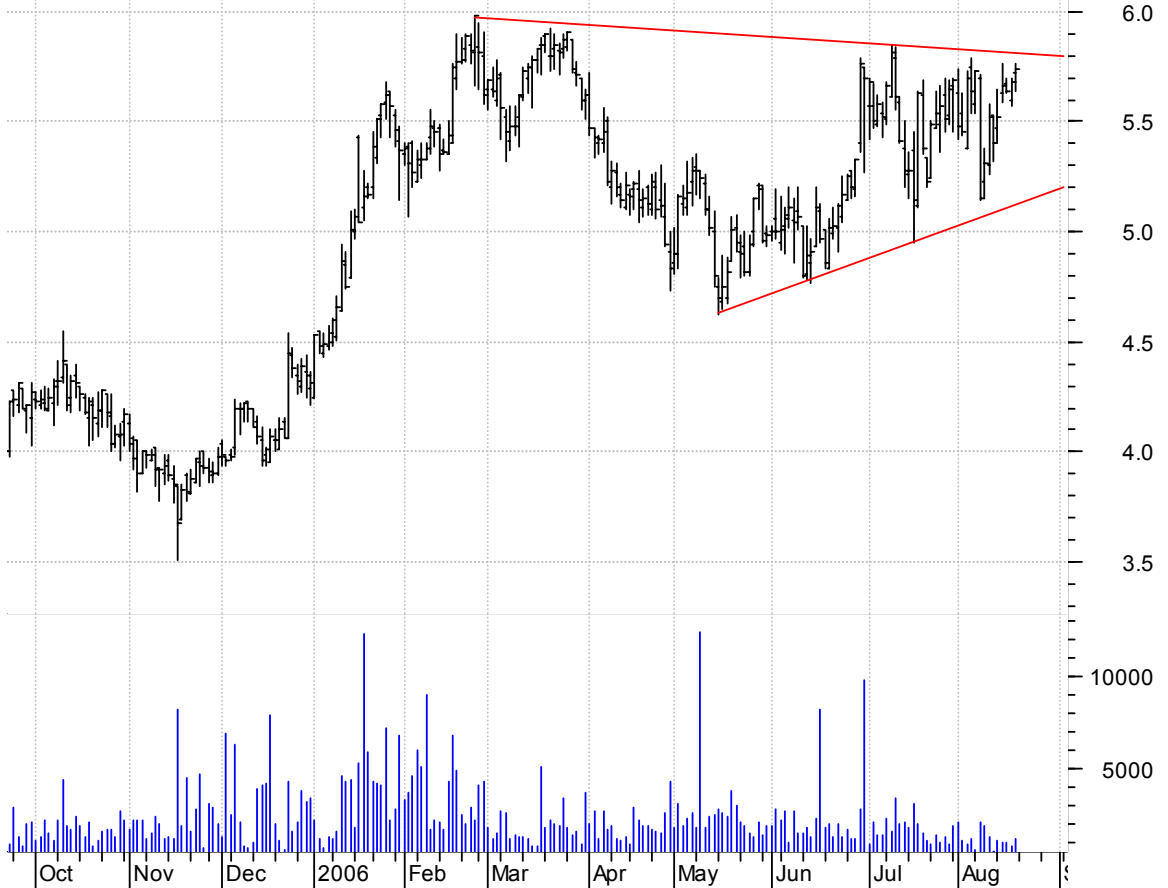
### HCSG symm. tri. / buy on upside breakout on increased volume

Health Care Serv (21.4700, 21.4700, 20.9100, 21.2300 -0.1300)



**HPOL symm. tri. / buy on upside brkout on increased volume**

Harris Interacti (5.7200, 5.7600, 5.6400, 5.7400 +0.0600)



**IMA bull pennant / buy on upside brkout on increased volume**

Inverness Medica (33.0000, 34.0000, 32.8800, 33.9800 +1.2300)





**LMNX asc. tri. / buy on upside brkout on increased volume**

Luminex Cp:OTC (17.5600, 17.6000, 17.0800, 17.3900 -0.0500)



**MOV symm. tri. (discounting spike days) / buy on upside brkout on increased volume**

Movado Group Inc (23.3700, 23.4100, 22.9200, 23.2300 +0.0200)



**NP bull pennant / buy on upside breakout on increased volume**

NEENAH PAPER:NYS (32.8300, 33.0500, 32.5100, 32.8700 +0.0500)



**NTG symm. tri. / buy on upside breakout on increased volume**

Natco Group Inc: (36.6500, 37.2000, 36.1800, 36.9900 +0.3800)



**OMX sloppy asc. tri. / buy on upside brkout on increased volume**

OfficeMax Inc:NY (45.0000, 45.0000, 43.0900, 44.0700 -0.9300)

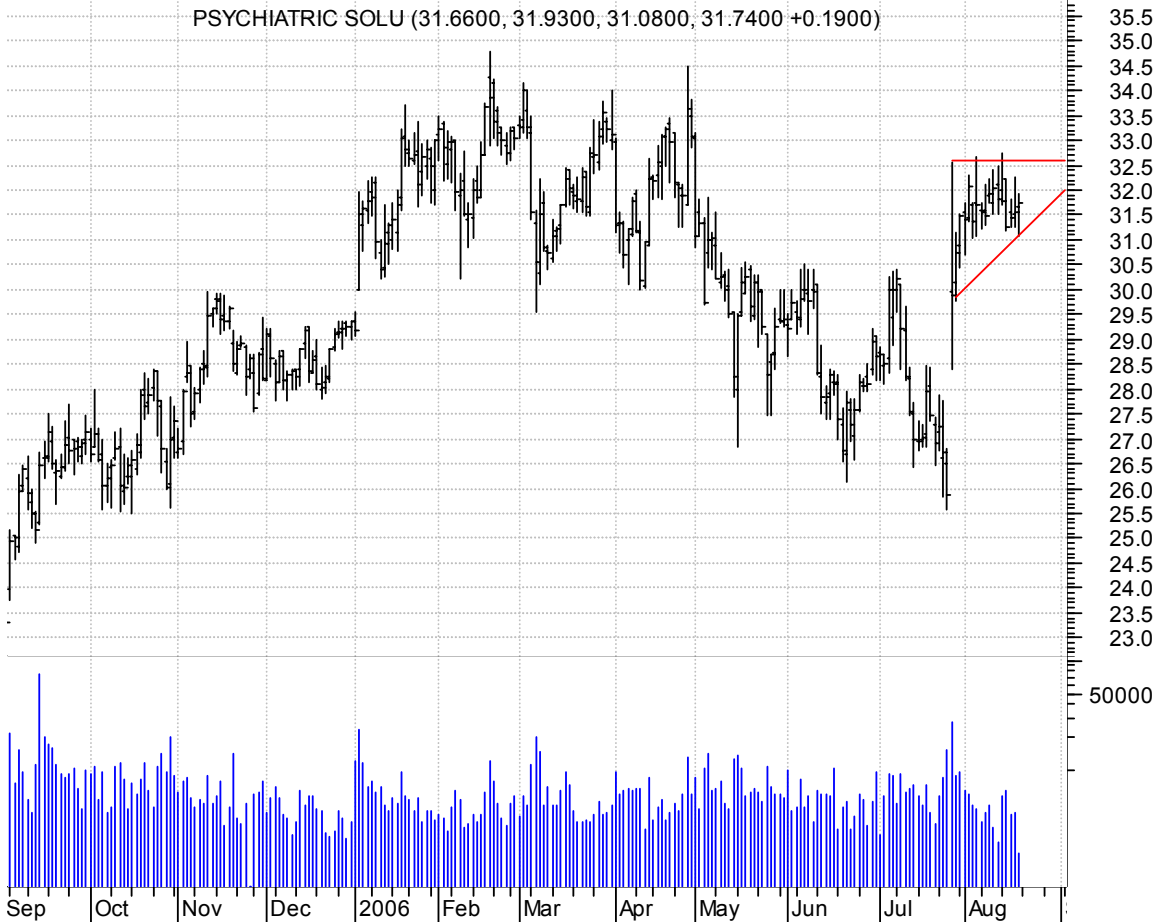


**OS symm. tri. / buy on upside brkout on increased volume**

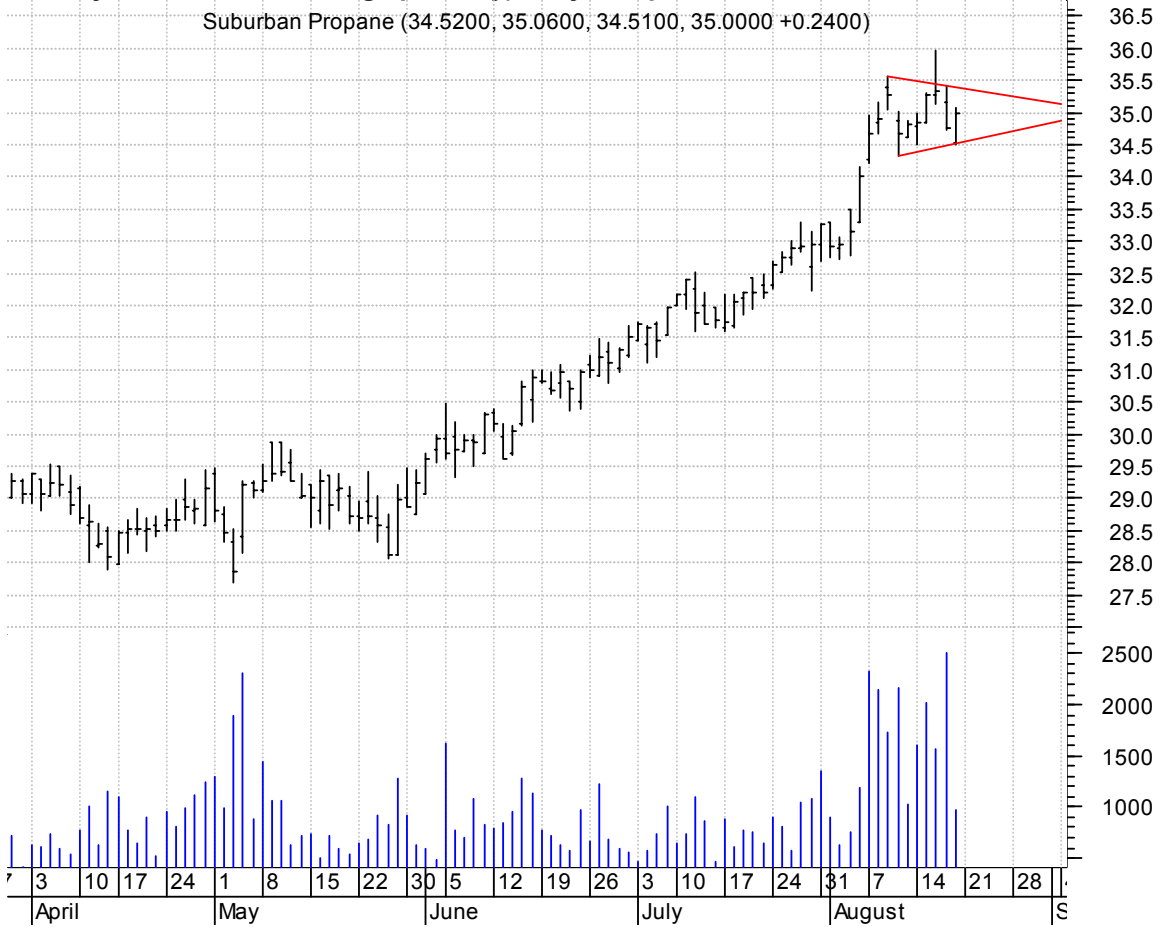
Oregon Steel Mil (48.9500, 49.9900, 48.6600, 49.7600 +0.9600)



**PSYS / asc. tri. preceded by 'pole-like' move / buy on upside brkout on increased volume**

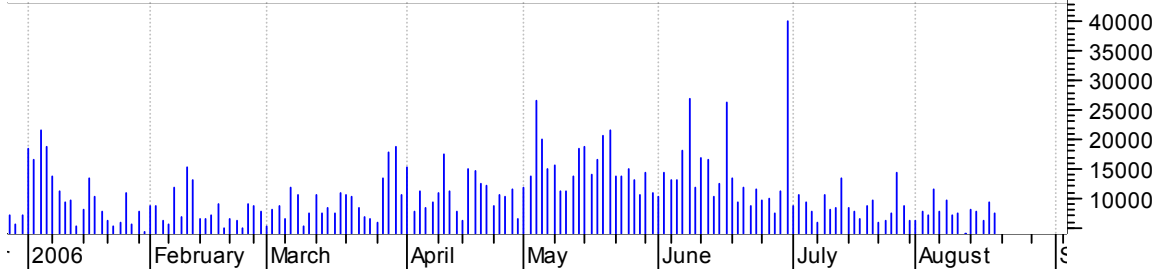


**SPH symm. tri. / discounting spike day) / buy on upside brkout on increased volume**



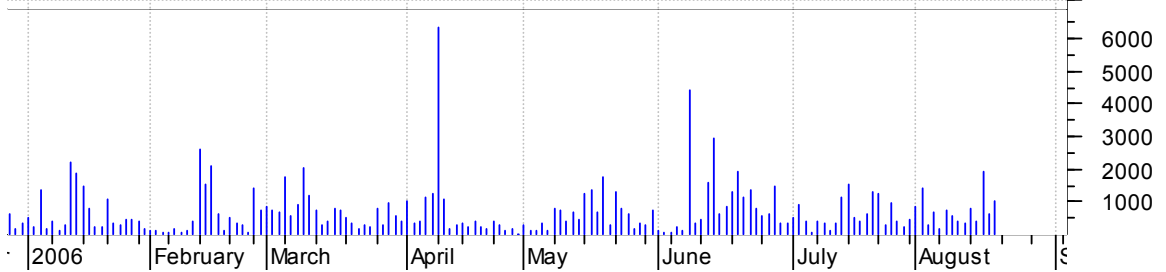
**TTI symm. tri. / buy on upside brkout on increased volume**

Tetra Technologi (27.4000, 28.0500, 27.3500, 27.9300 +0.6300)



**TTIL symm. tri. / buy on upside brkout on increased volume**

TTI Team Telecom (4.6000, 4.7600, 4.5600, 4.7300 +0.0600)



**TXCO bull pennant / buy on upside brkout on increased volume**

Exploration Co o (12.1200, 12.1800, 11.9500, 12.0900 +0.0300)



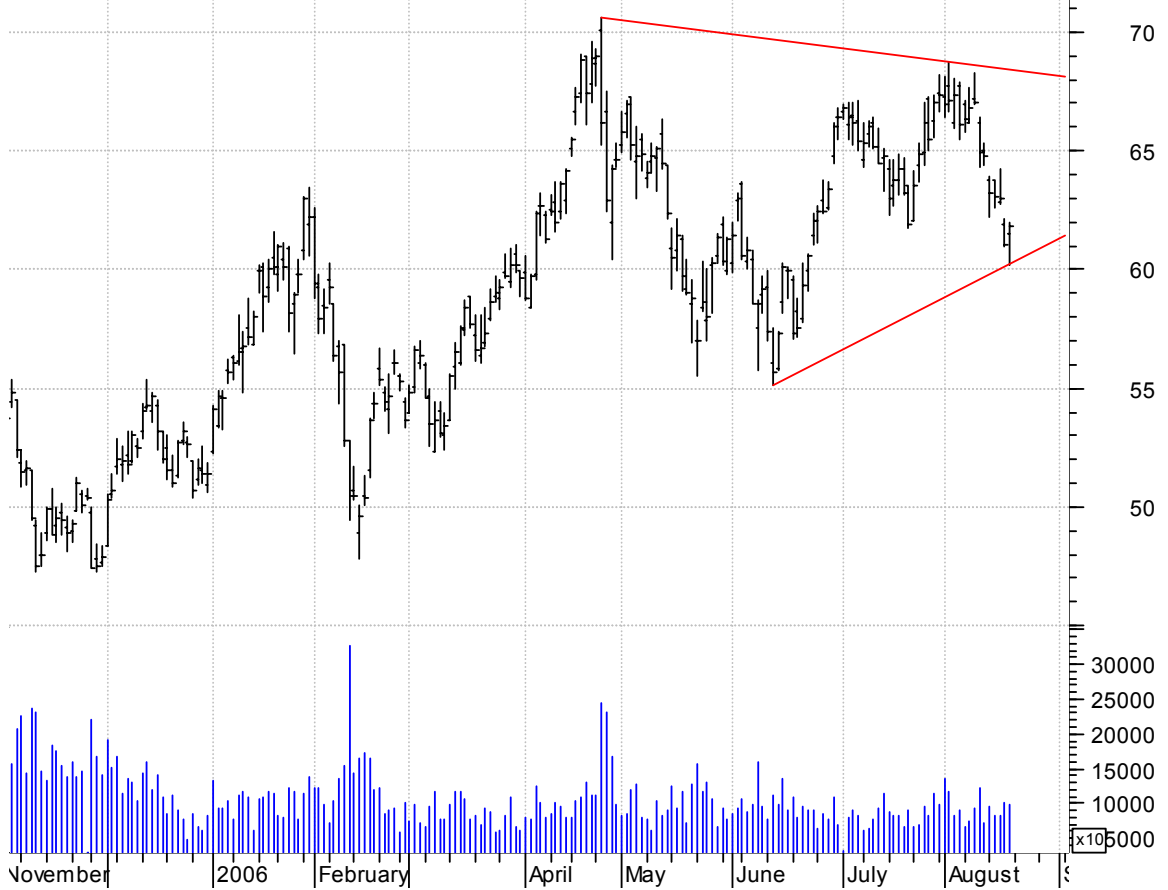
**UCTT symm. tri. / buy on upside brkout on increased volume**

Ultra Clean Hid: (9.0000, 9.4300, 8.9400, 9.3500 -0.0400)



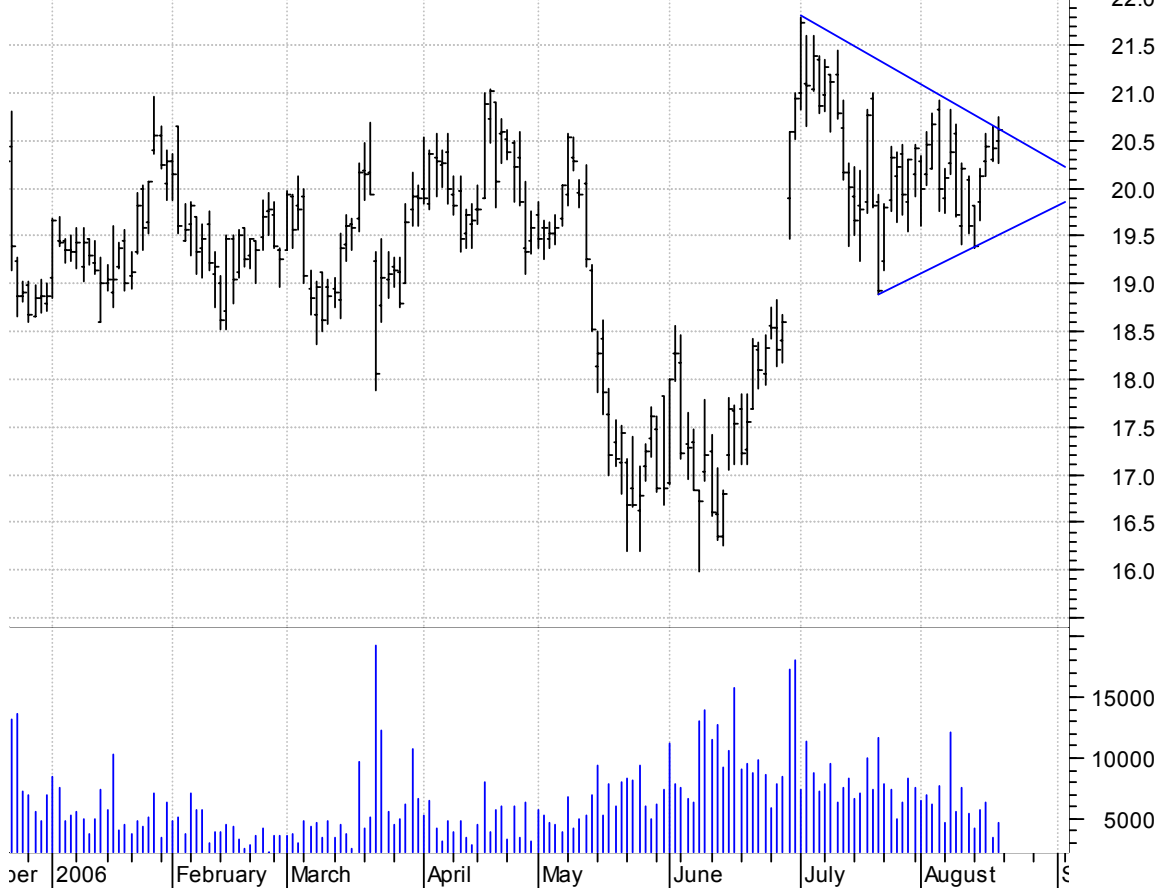
**VLO symm. tri. / buy on upside breakout on increased volume**

Valero Energy Co (61.4900, 61.9900, 60.1800, 61.8400 +0.8100)



**WOR symm. tri. preceded by 'pole-like' move / buy on upside breakout on increased volume**

Worthington Ind (20.5000, 20.7400, 20.2600, 20.6100 +0.1900)



**chartpatterns.com**  
Chart Pattern Analysis for Timing the Markets

[KMatras@aol.com](mailto:KMatras@aol.com)