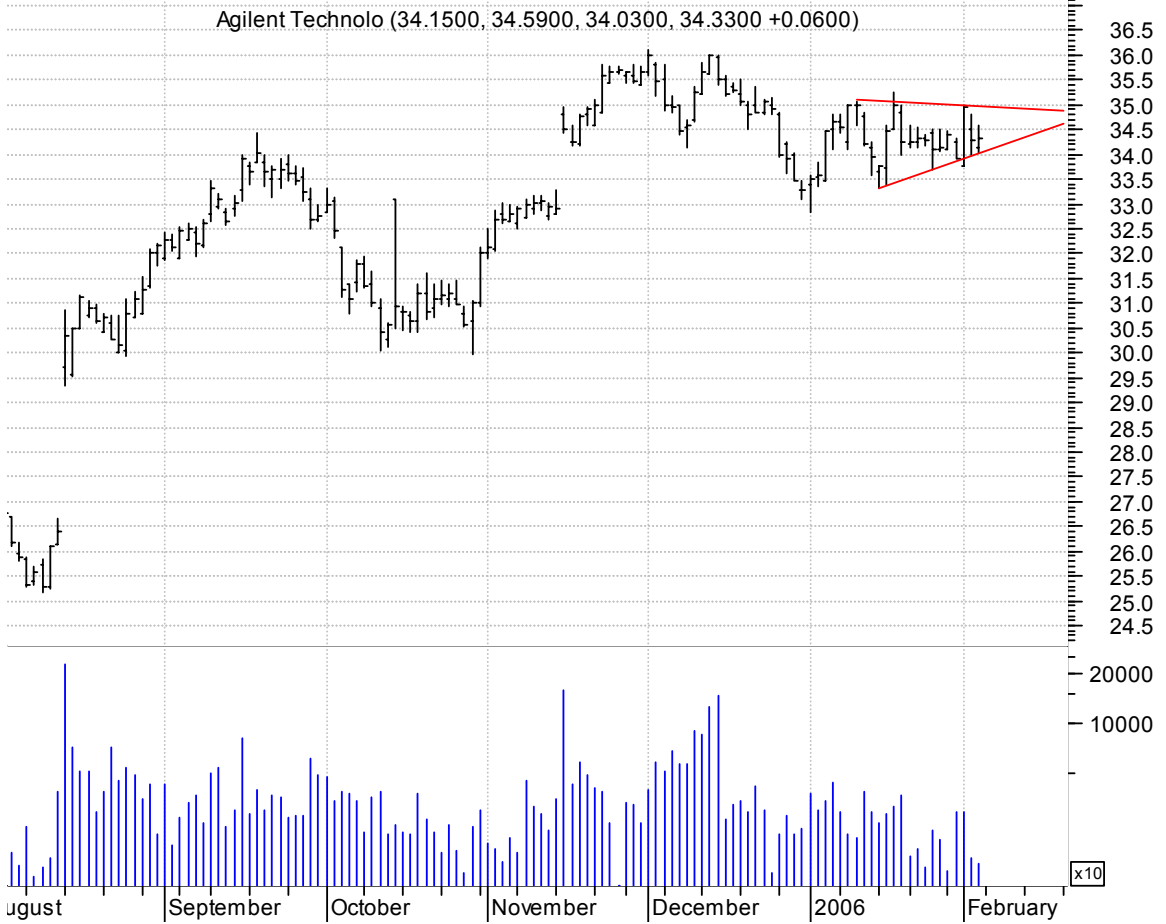
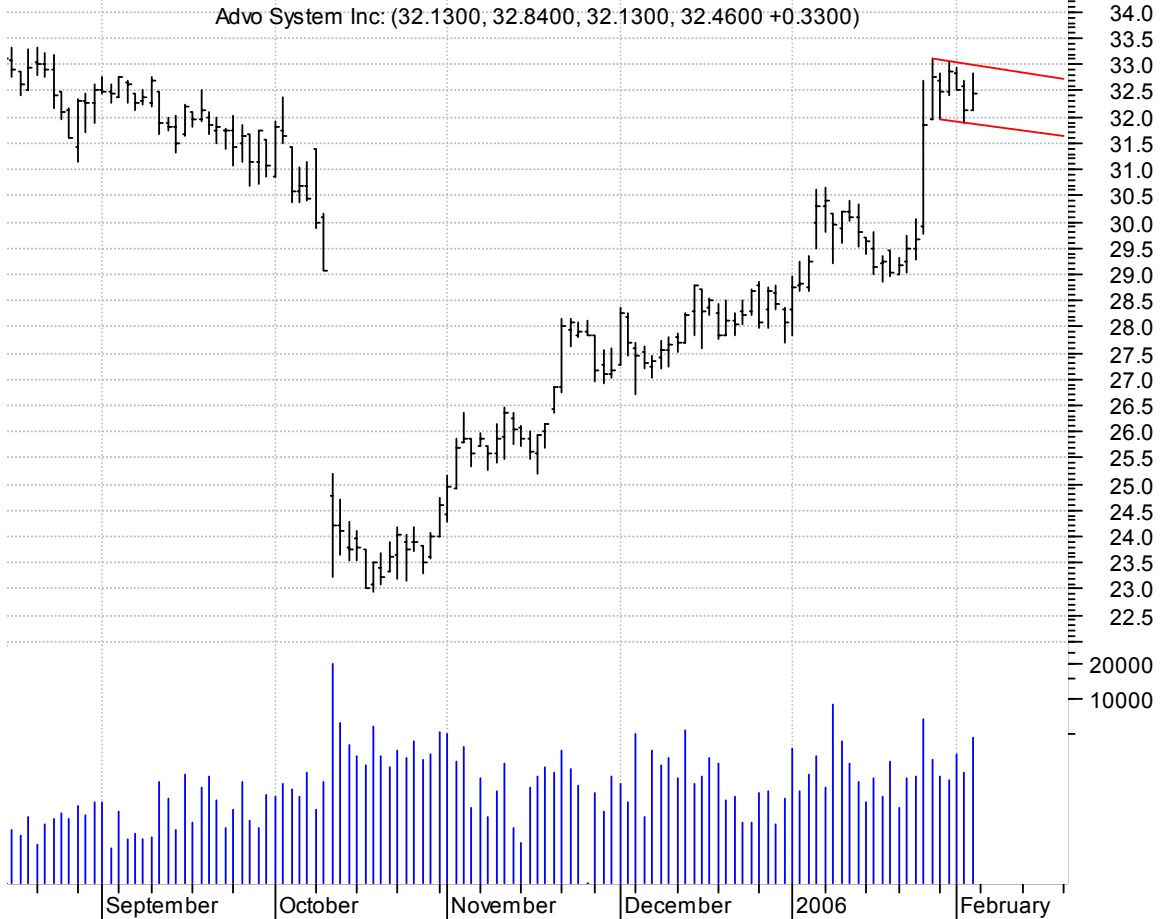


**A sloppy symm. tri. / buy on upside breakout on increased volume**



**AD bull flag / buy on upside breakout on larger than normal volume**



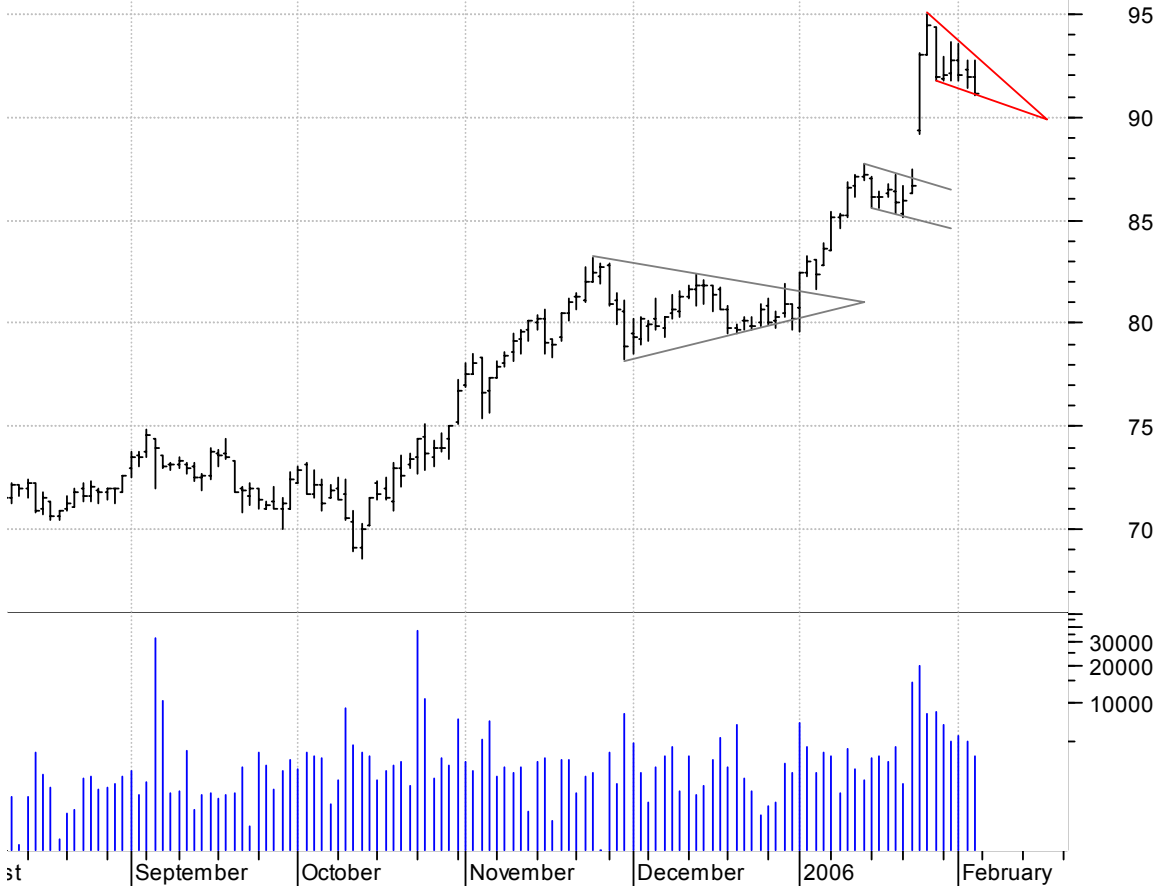
**ALKS symm. tri. preceded by 'pole-like' move / buy on upside brkout on increased volume**

Alkermes:OTC (23.3500, 23.4300, 22.8100, 23.1300 -0.2900)



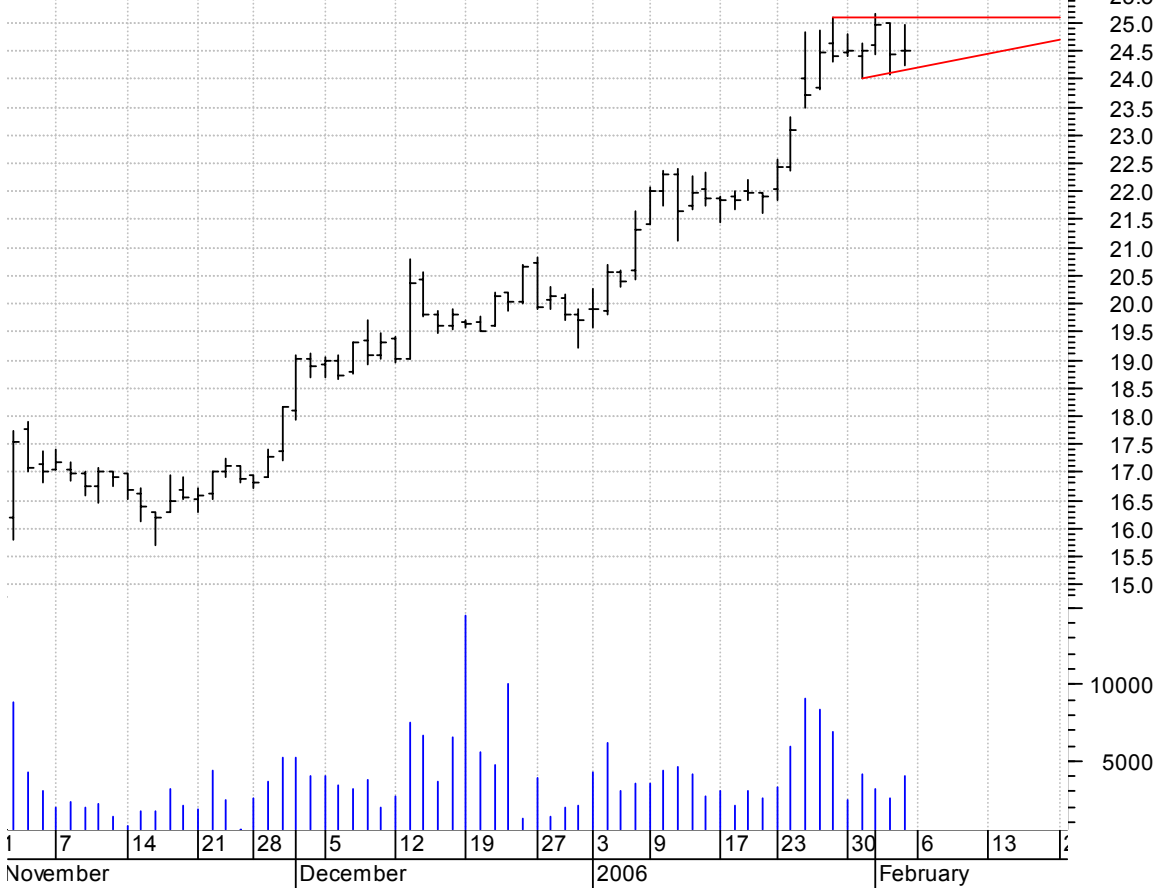
**AMG falling wedge preceded by 'pole-like' move / buy on upside brkout on increased volume**

Affiliated Manag (91.9200, 92.7700, 91.0600, 91.1600 -0.7600)



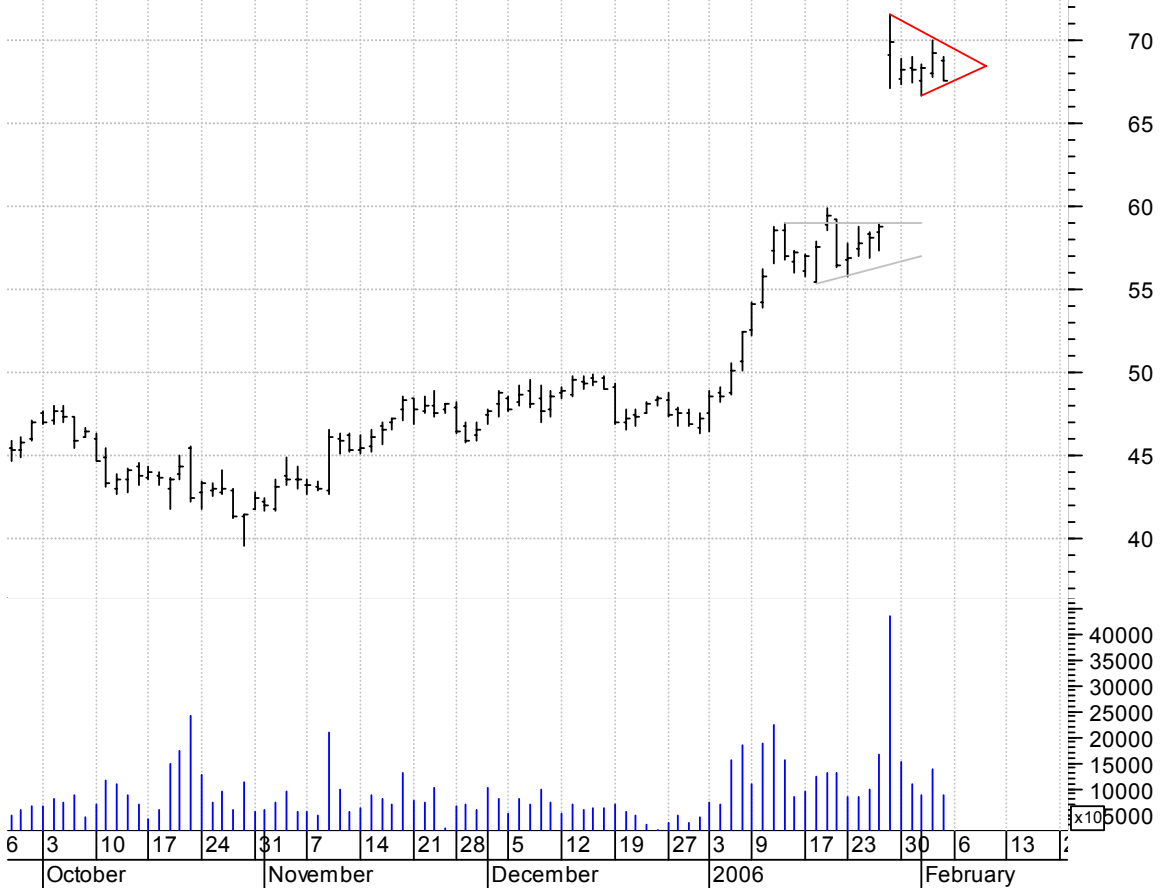
**BGC asc. tri. preceded by 'pole-like' move / buy on upside brkout on increased volume**

General Cable Co (24.5200, 24.9700, 24.2500, 24.4900 +0.0600)



**BRCM bull pennant / buy on upside brkout on increased volume**

Broadcom Corp Cl (68.7500, 69.0000, 67.5300, 67.5800 -1.6400)



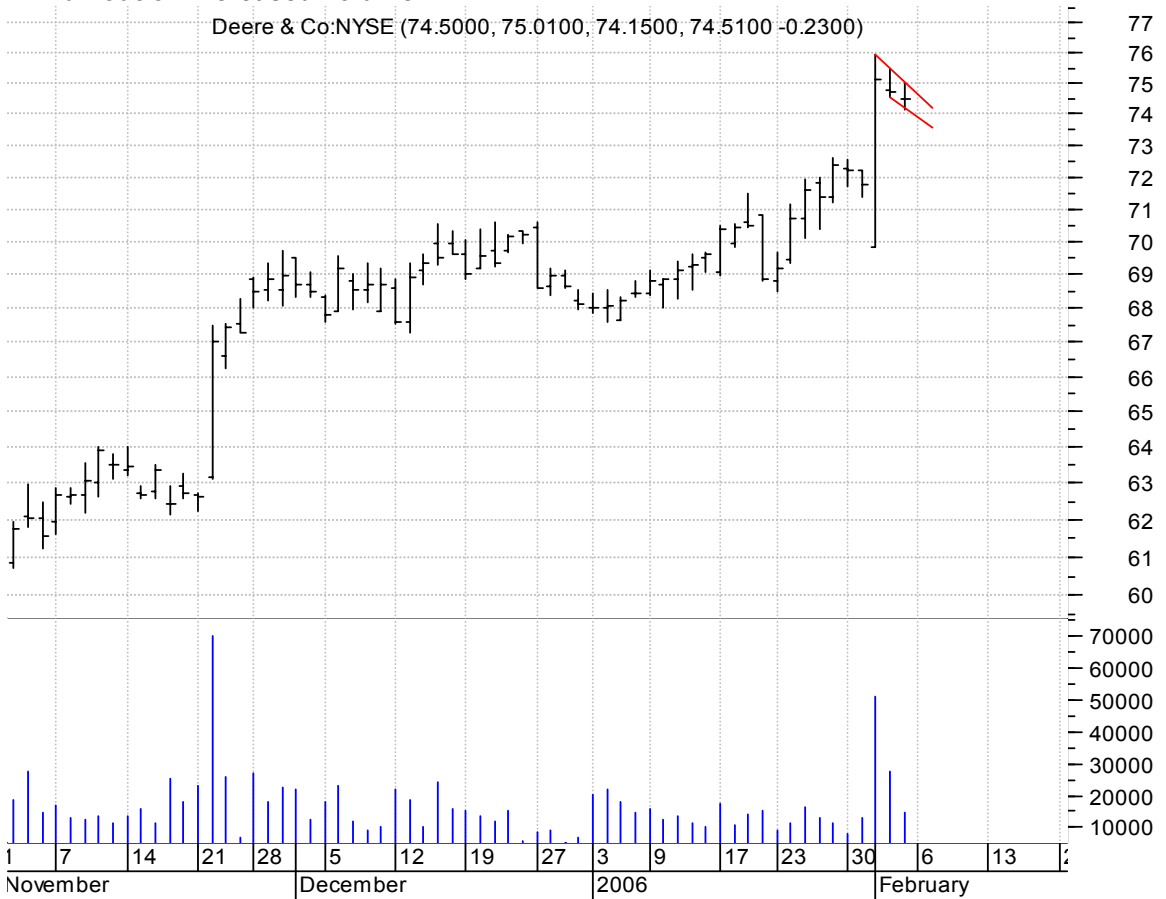
**DDS symm. tri. / buy on upside brkout on increased volume**

Dillard Inc:NYSE (25.9000, 26.1000, 25.6100, 25.6700 -0.2900)



**DE falling wedge preceded by 'pole-like' move (easier seen on an intraday chart) / buy on upside brkout on increased volume**

Deere & Co:NYSE (74.5000, 75.0100, 74.1500, 74.5100 -0.2300)



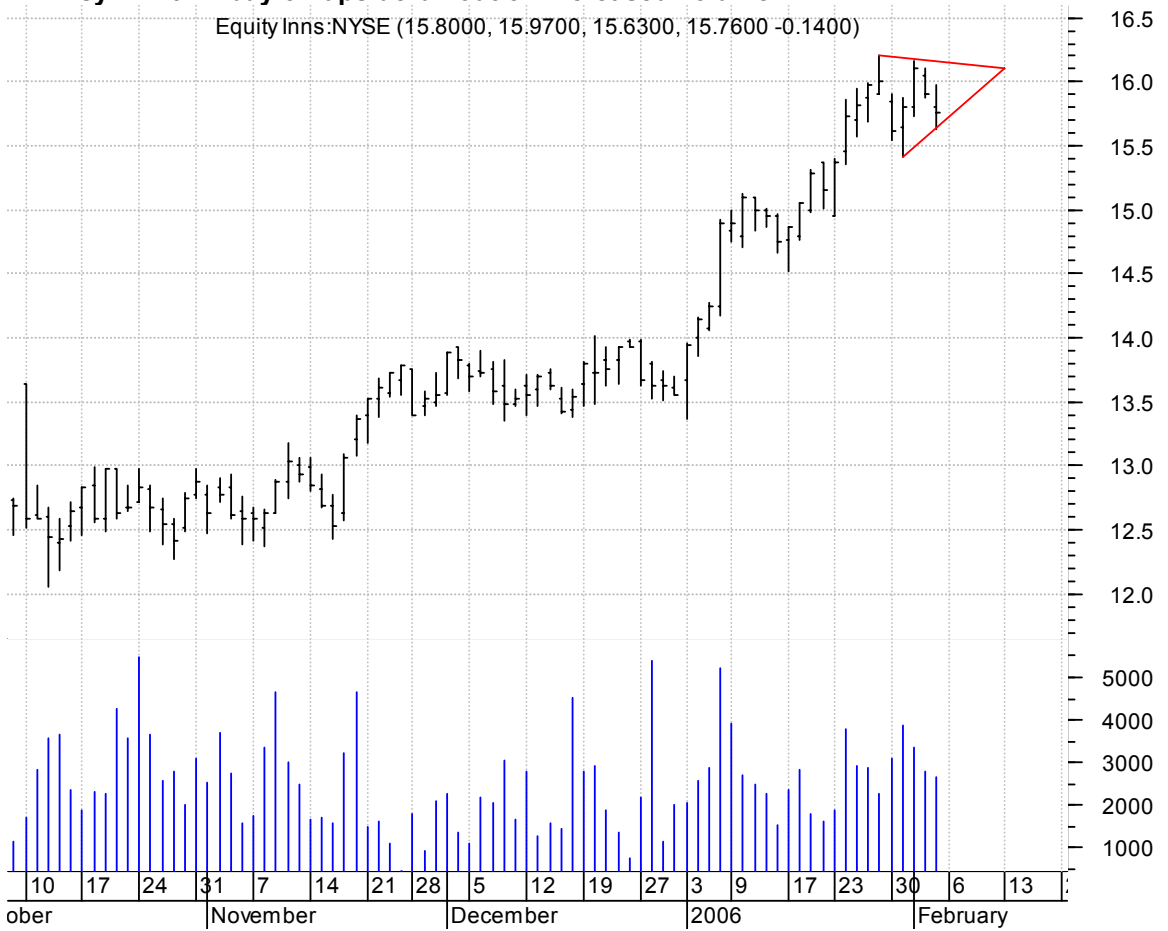
**DESC sloppy symm. tri. (discounting spike day) / buy on upside brkout on increased volume**

Distr Energy Sys (9.9500, 10.2000, 9.7000, 10.0900 +0.1700)



**ENN symm. tri. / buy on upside brkout on increased volume**

Equity Inns:NYSE (15.8000, 15.9700, 15.6300, 15.7600 -0.1400)



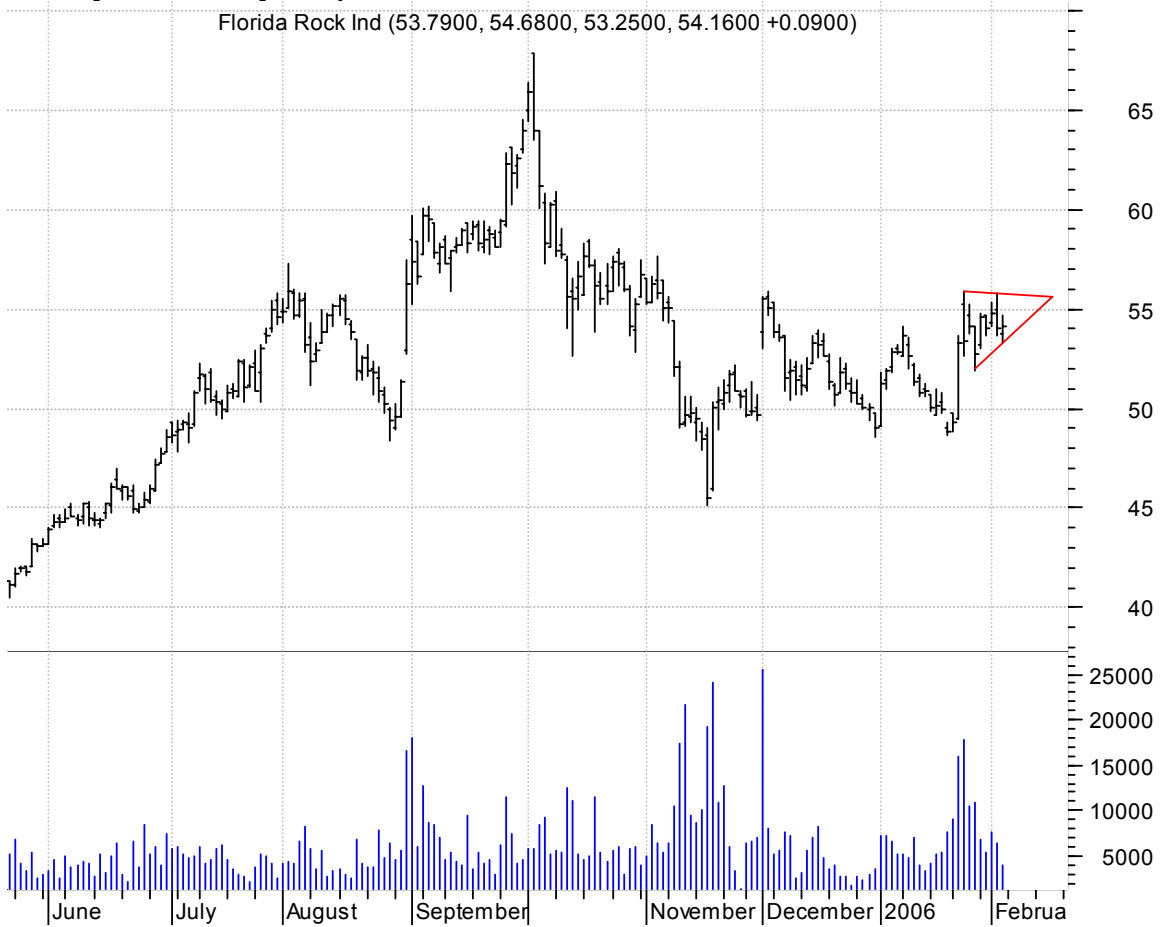
**EZPW falling wedge preceded by 'pole-like' move / buy on upside brkout on increased volume**

Ezcorp Inc:OTC (20.3000, 21.1900, 20.1800, 20.8900 +0.6200)



**FRK symm. tri. / buy on upside brkout on increased volume**

Florida Rock Ind (53.7900, 54.6800, 53.2500, 54.1600 +0.0900)



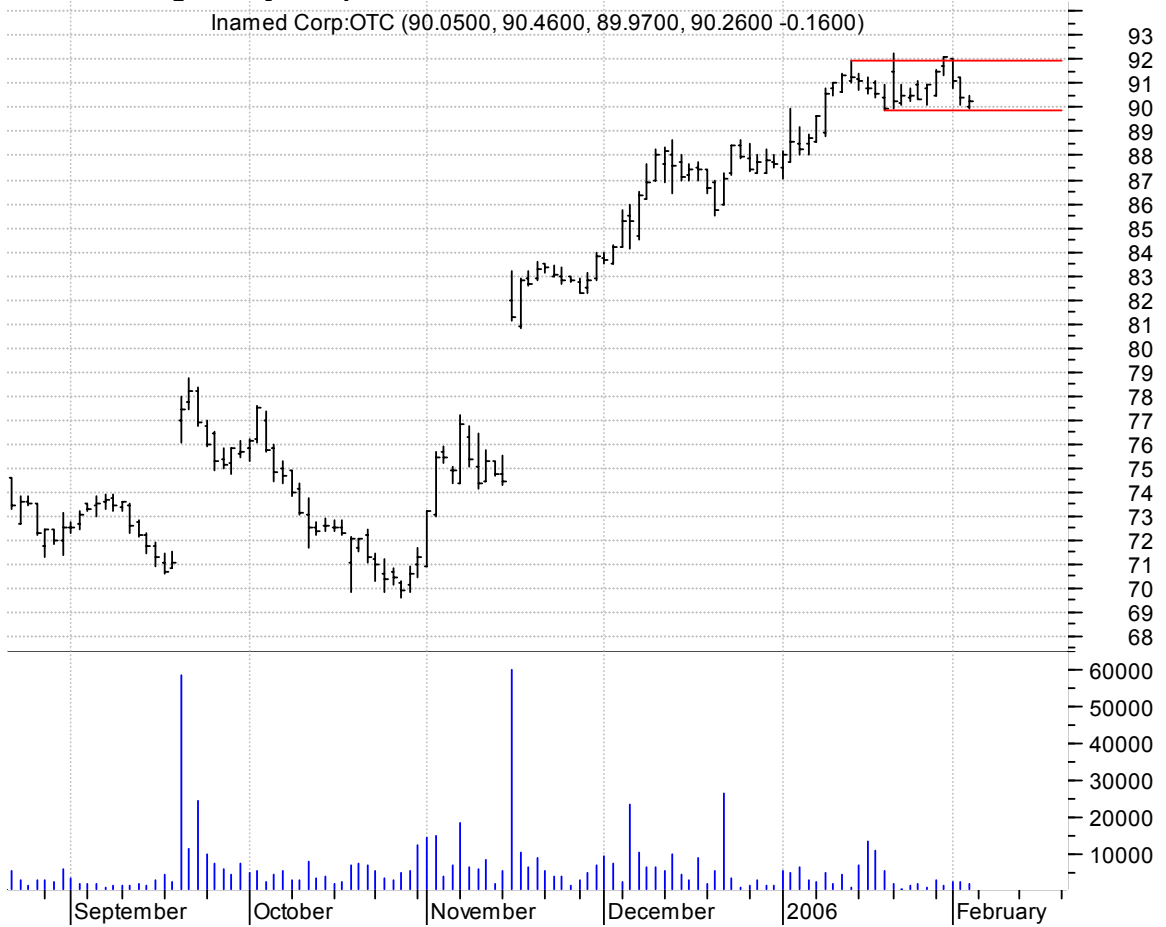
**IDTI sloppy asc. tri. / buy on upside brkout on larger than normal volume**

Integrated Devic (13.6200, 14.2900, 13.5100, 14.0200 +0.3000)



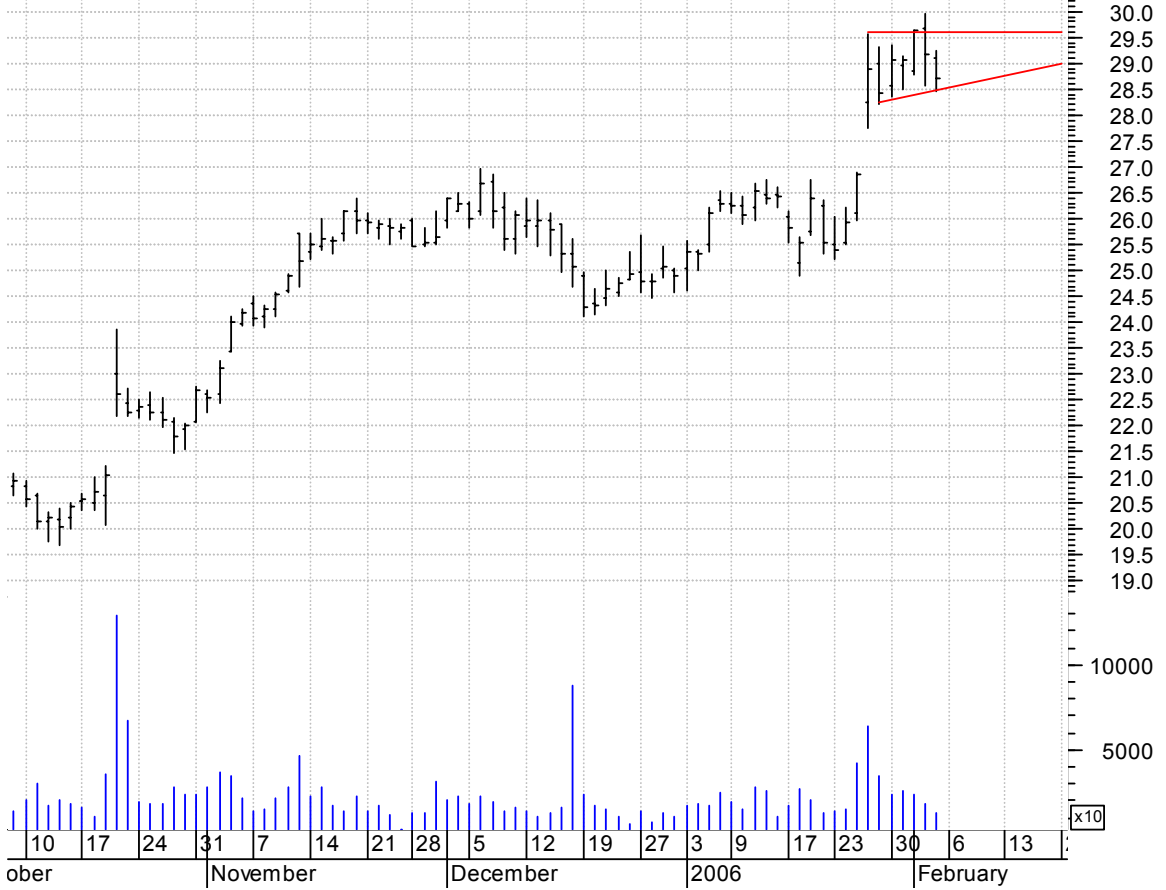
**IMDC rectangle / buy on upside brkout on increased volume**

Inamed Corp:OTC (90.0500, 90.4600, 89.9700, 90.2600 -0.1600)



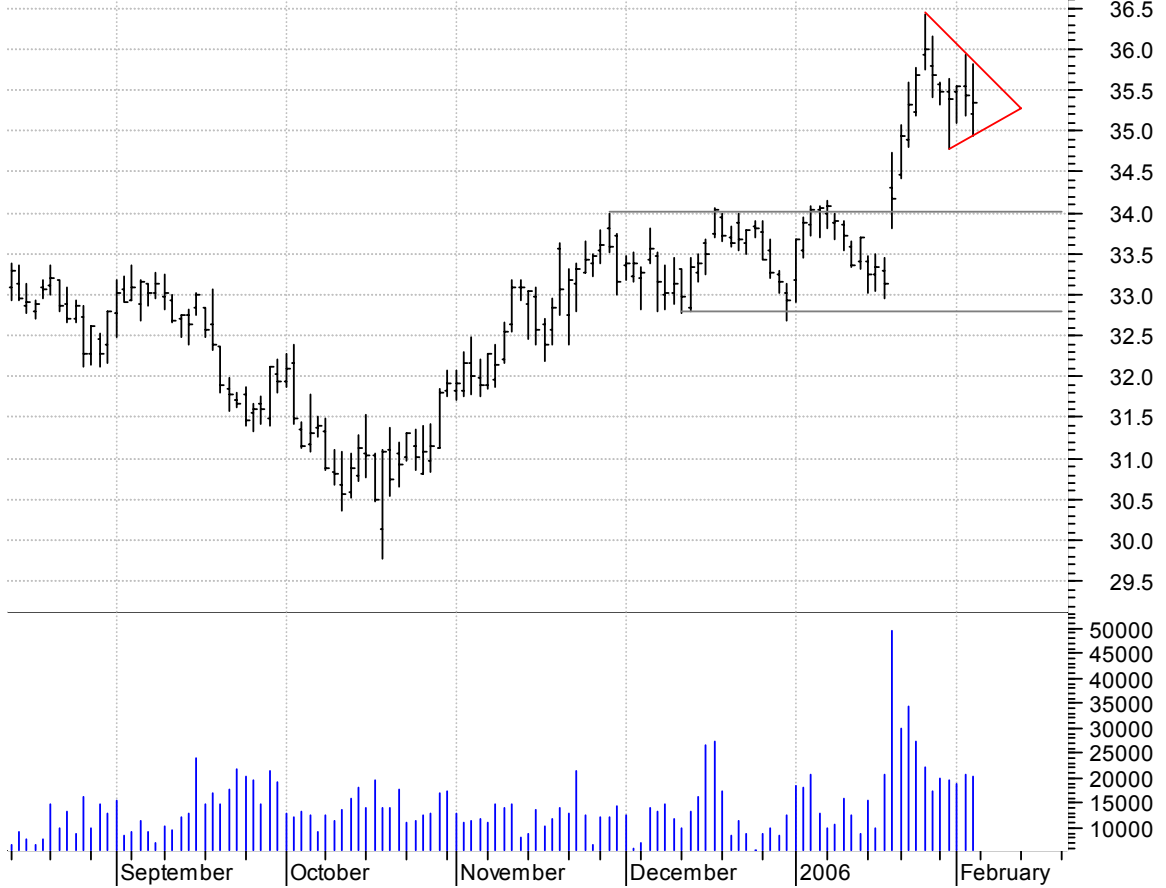
**ISIL sloppy asc. tri. preceded by 'pole-like' move / buy on upside brkout on increased volume**

Intersil Cp:OTC (29.1100, 29.2600, 28.4600, 28.7100 -0.4700)



**KEY symm. tri. preceded by 'pole-like' move / buy on upside brkout on increased volume**

Key Corp:NYSE (35.2000, 35.8100, 34.9300, 35.3400 -0.1000)





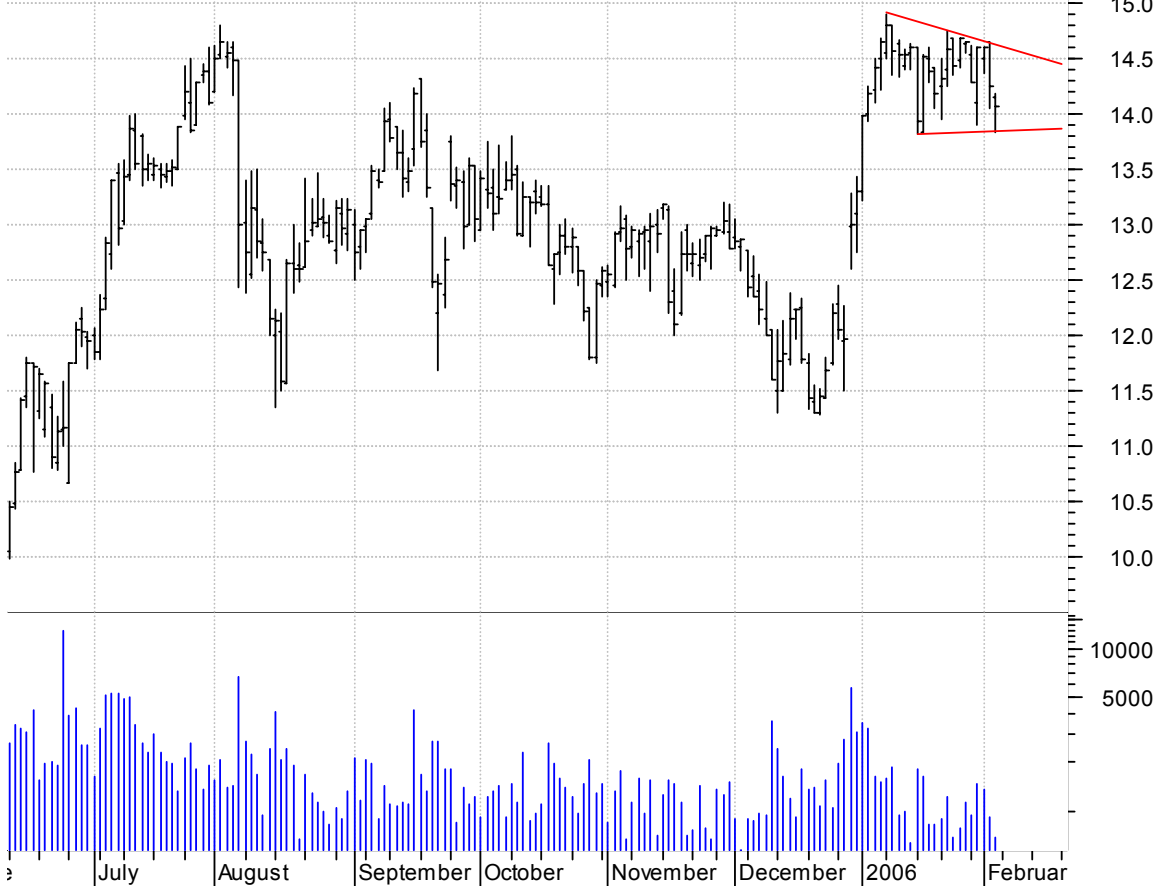
**KVHI symm. tri. / buy on upside breakout on increased volume**

KVH Industries:O (10.8400, 10.8400, 10.6000, 10.6200 -0.2600)

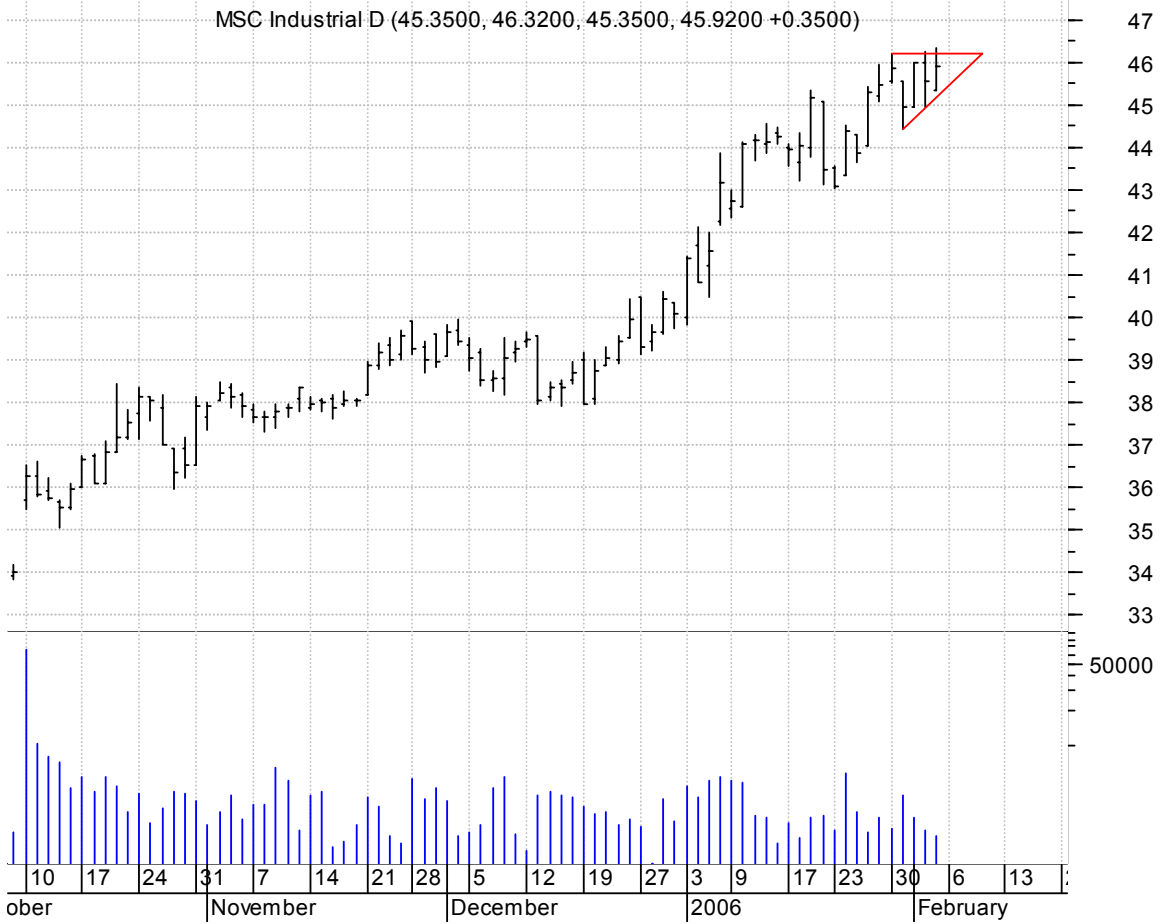


**LUB symm. tri. preceded by 'pole-like' move / buy on upside breakout on increased volume**

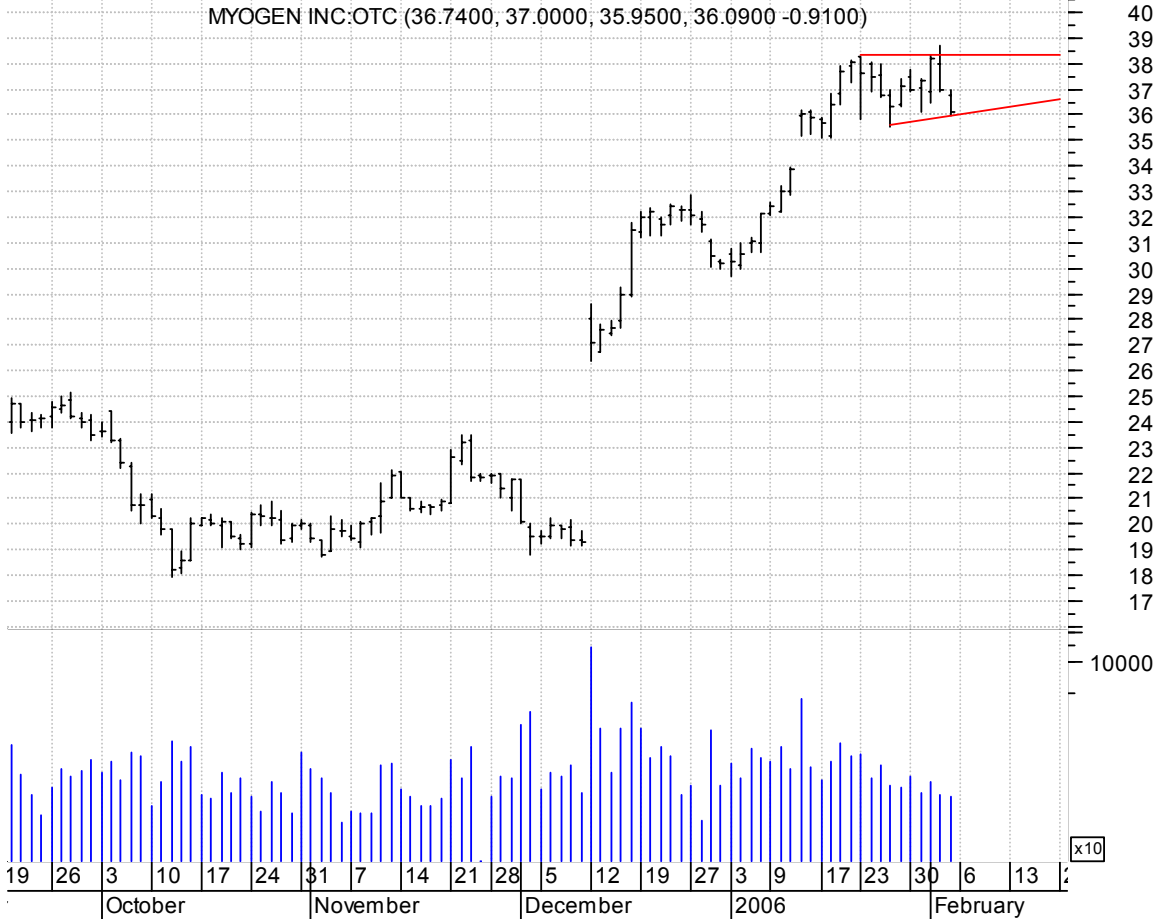
Luby's Inc:NYSE (14.1500, 14.1800, 13.8400, 14.0700 -0.1800)



**MSM asc. tri. / buy on upside brkout on increased volume**

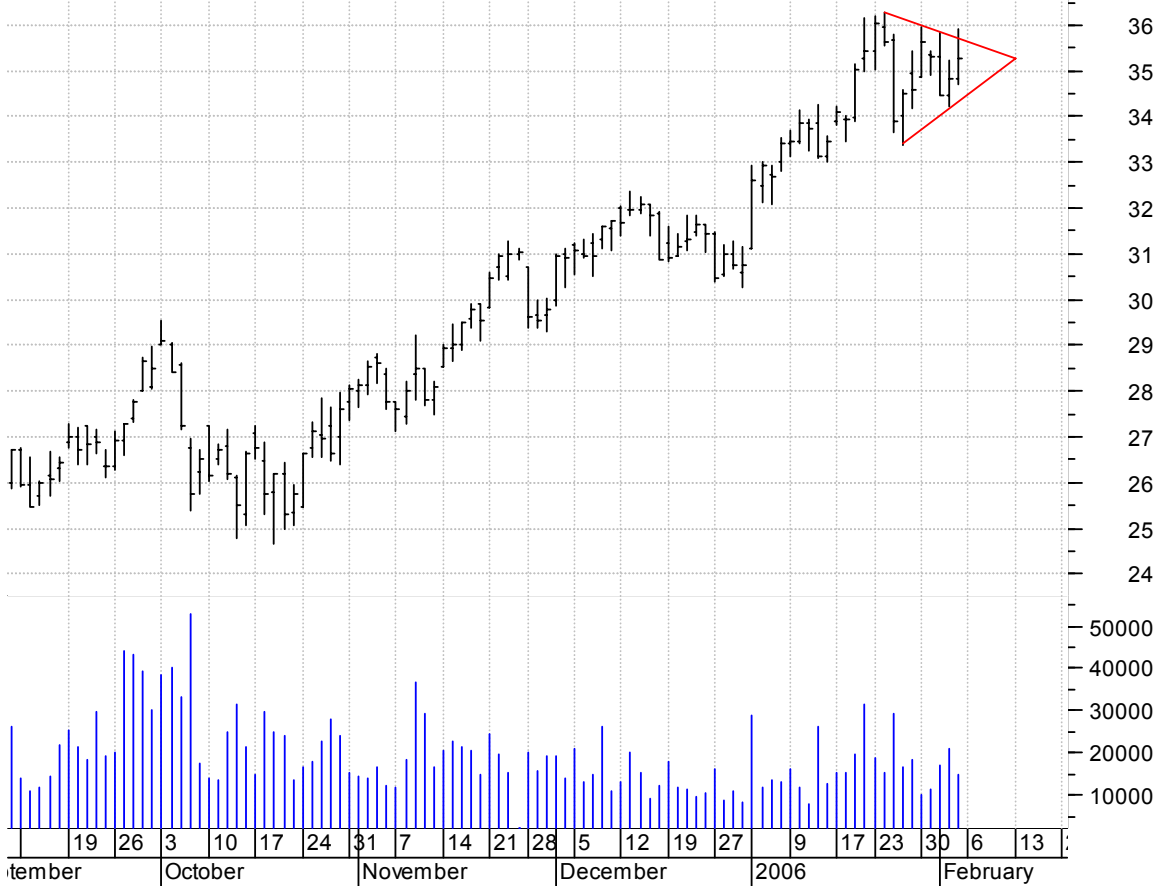


**MYOG sloppy asc. tri. preceded by 'pole-like' move / buy on upside brkout on increased volume**



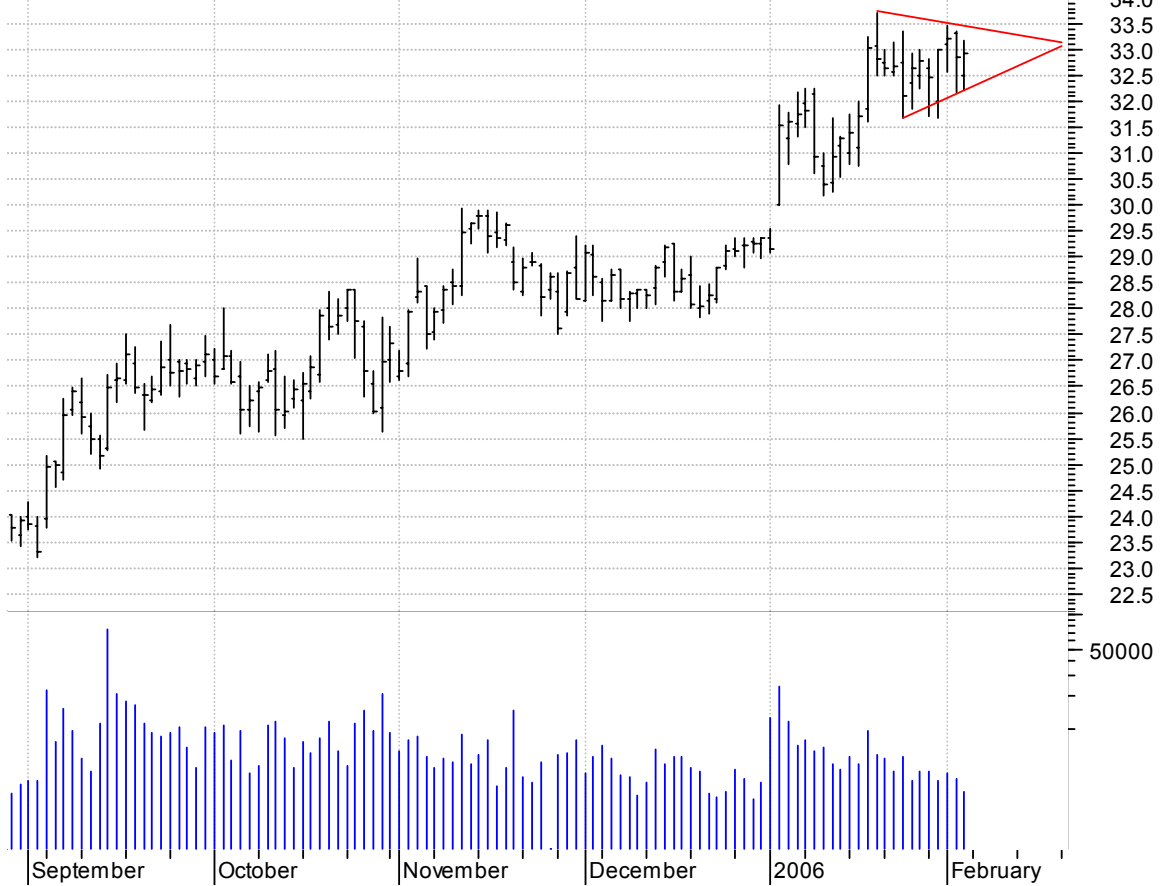
**PDE symm. tri. / buy on upside brkout on increased volume**

Pride Intl Inc:N (34.8100, 35.9200, 34.7000, 35.2900 +0.4800)



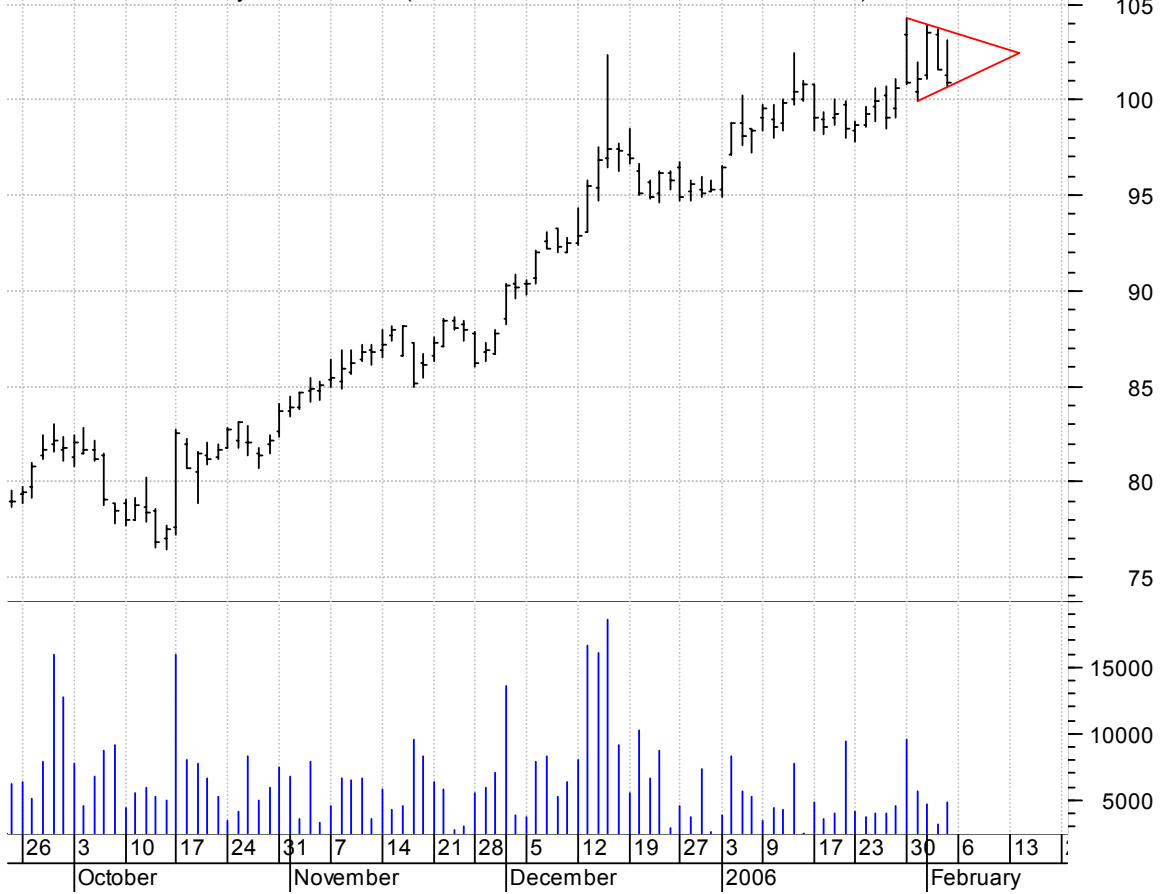
**PSYS sloppy symm. tri. / buy on upside brkout on increased volume**

PSYCHIATRIC SOLU (32.5100, 33.1800, 32.2300, 32.9500 +0.1000)



**RAI symm. tri. / buy on upside breakout on increased volume**

Reynolds American (101.300, 103.100, 100.700, 100.870 -0.7600)



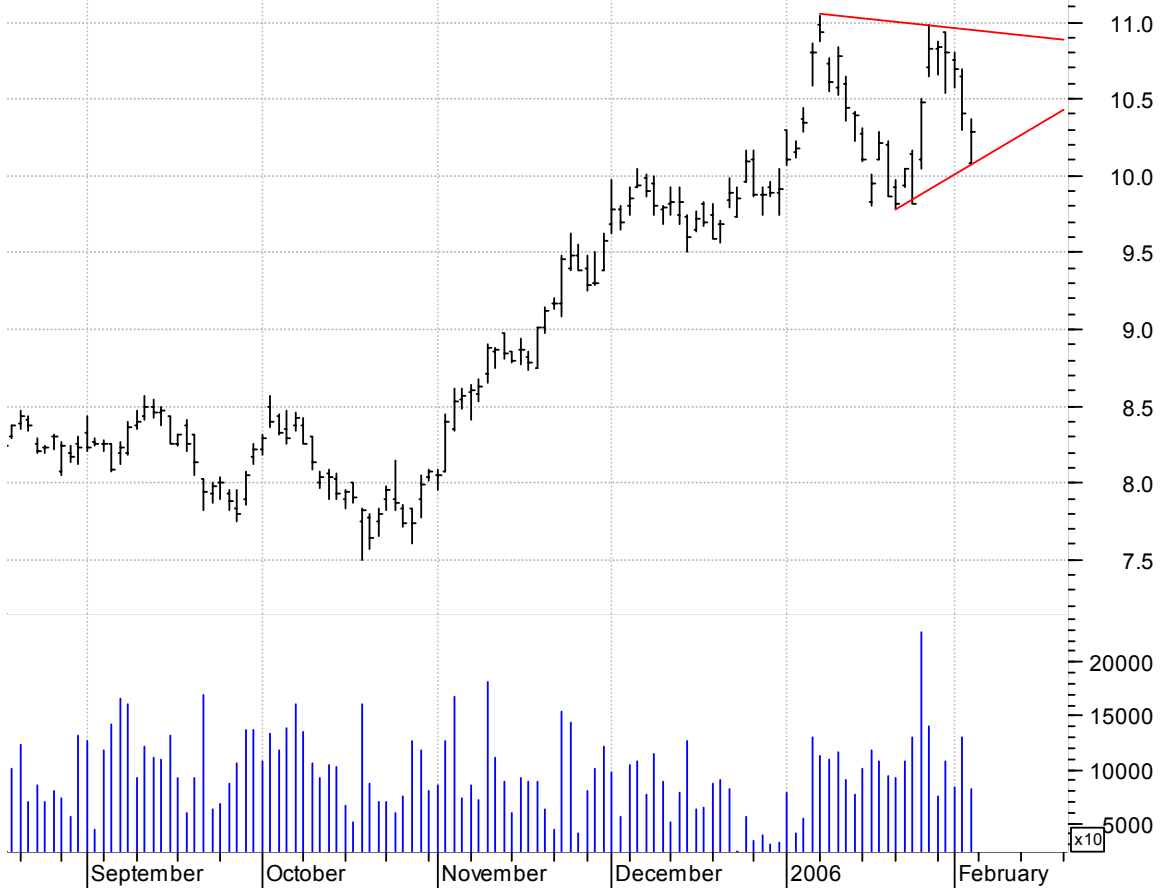
**RFMD sloppy symm. tri. (discounting spike day) preceded by 'pole-like' move / buy on upside breakout on increased volume**

RF Micro Devices (7.2700, 7.3500, 7.1500, 7.2800 +0.0200)



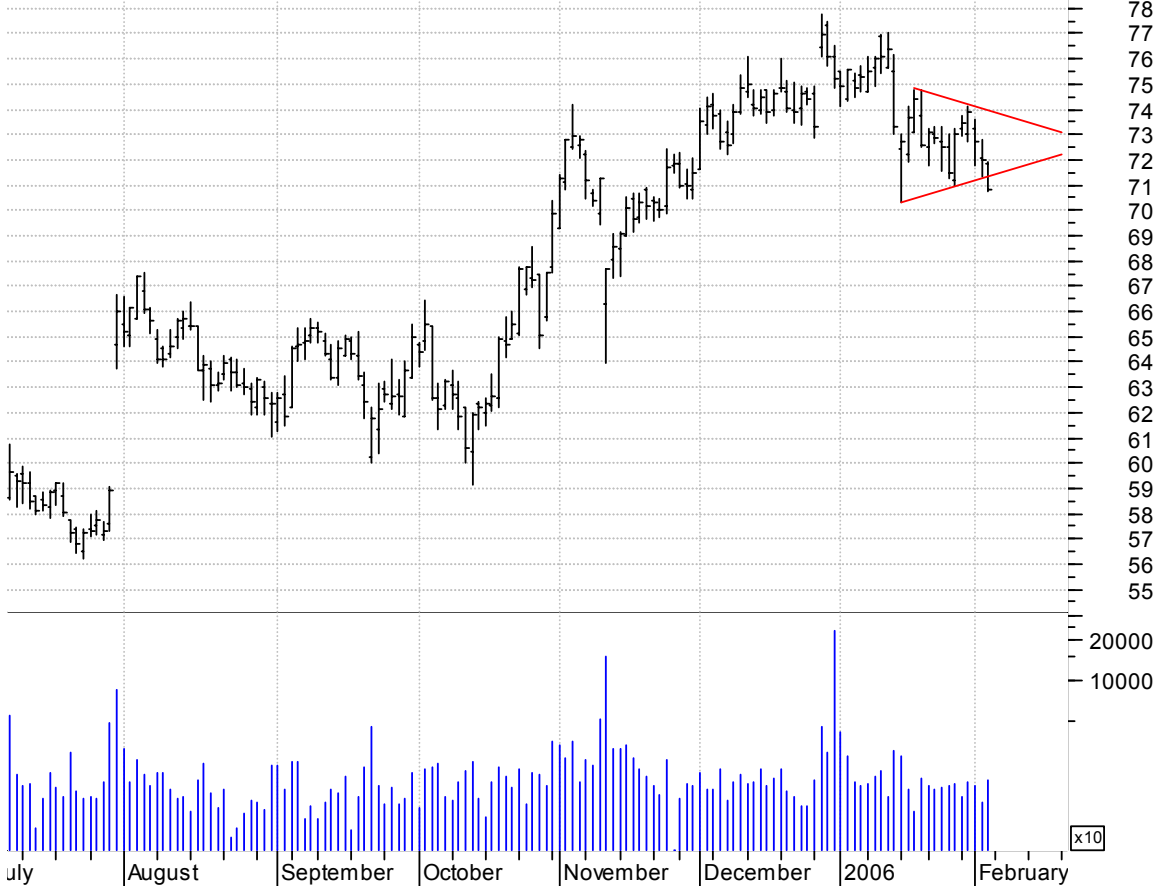
**TSM symm. tri. / buy on upside brkout on increased volume**

Taiwan Semicondu (10.0800, 10.3700, 10.0800, 10.2800 -0.1200)



**WFMI symm. tri. brkout / sell and use bottom of pattern as failure point**

Whole Food Marke (71.8400, 71.9500, 70.7500, 70.8400 -1.1500)



**WIBC symm. tri. / buy on upside brkout on increased volume**



**WTI falling wedge preceded by 'pole-like' move / buy on upside brkout on increased volume**



**chartpatterns.com**  
Chart Pattern Analysis for Timing the Markets

[KMatras@aol.com](mailto:KMatras@aol.com)