

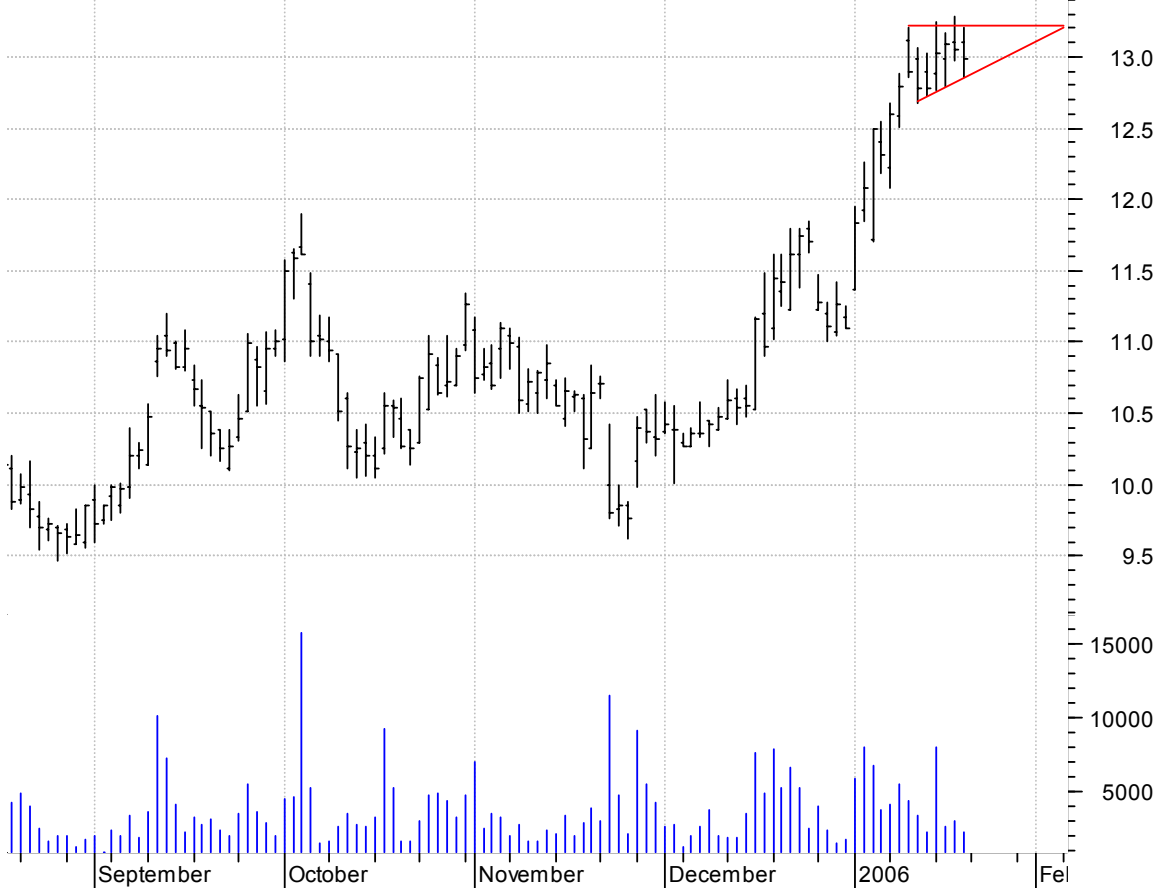
ACPW symm. tri. / buy on upside brkout on increased volume

ACTIVE POWER INC (4.1100, 4.3000, 4.1100, 4.1700 -0.1100)



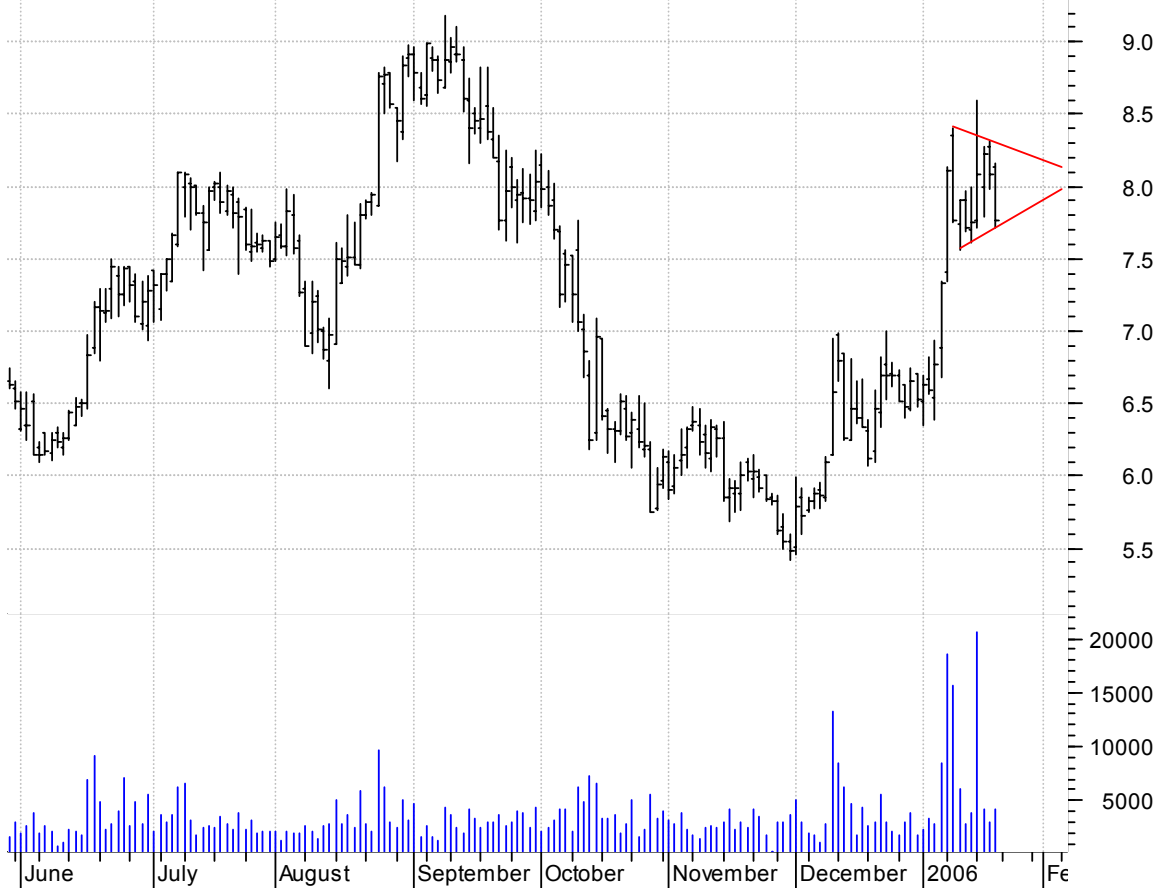
AUDC asc. tri. / buy on upside brkout on increased volume

Audiocodes Ltd:O (13.1000, 13.2000, 12.8500, 12.9900 -0.0600)



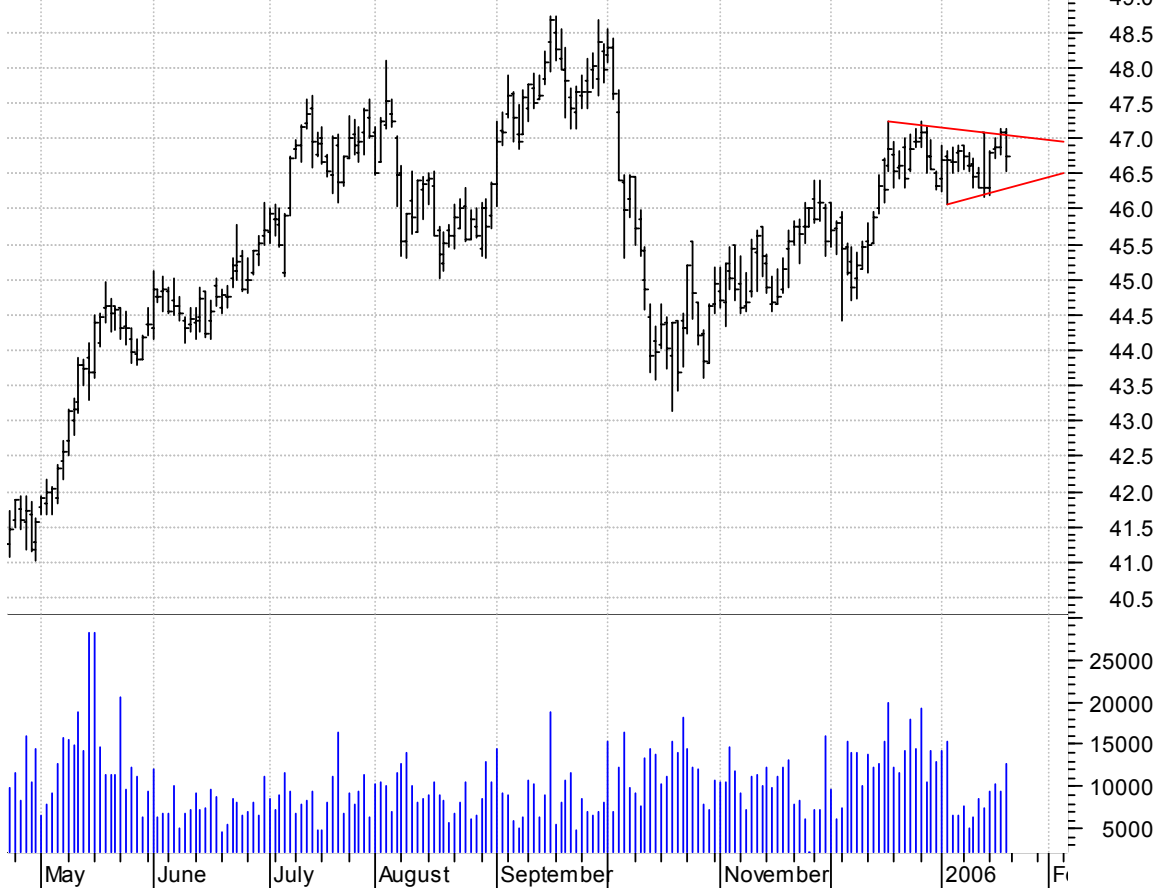
BIVN sloppy symm. tri. preceded by 'pole-like' move / buy on upside brkout on increased volume

Bioenvision Inc. (8.1300, 8.1600, 7.7200, 7.7600 -0.3200)



ED symm. tri. / buy on upside brkout on larger than normal volume

Consolidated Edi (47.0900, 47.1400, 46.5300, 46.7300 -0.3600)



ESRX symm. tri. / buy on upside brkout on increased volume

Express Scripts (88.7000, 89.9800, 86.1000, 86.1000 -2.9100)



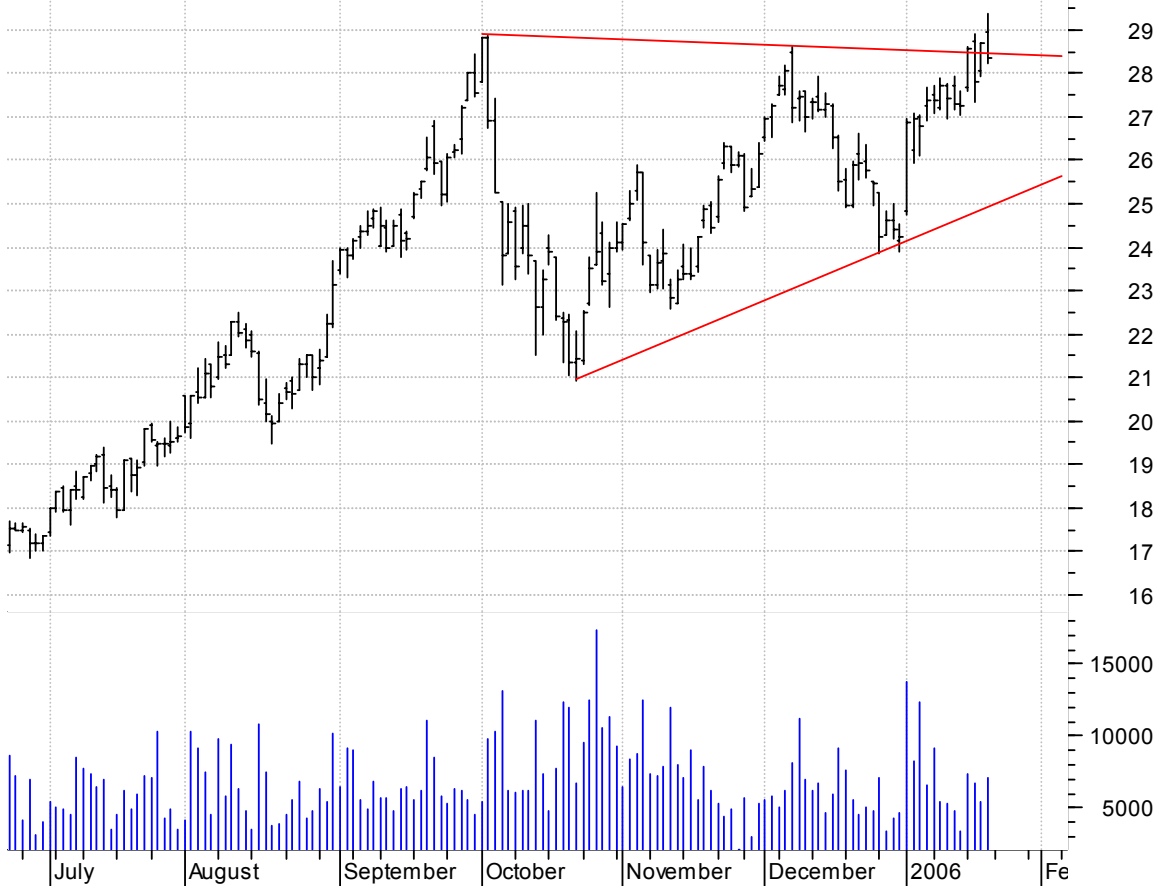
INMD symm. tri. / buy on upside brkout on increased volume

Integrared Ameri (12.8100, 13.6600, 12.5300, 13.6400 +0.5600)



KCS symm. tri. / buy on upside breakout on increased volume

KCS Energy Inc:N (28.9500, 29.3700, 28.2500, 28.3600 -0.3300)



LI asc. tri. preceded by 'pole-like' move / buy on upside breakout on increased volume

LAILAW INTL INC (27.5600, 27.5600, 26.9600, 26.9700 -0.3400)



LPX symm. tri. / buy on upside brkout on increased volume

Louisiana-Pacifi (27.3600, 27.4600, 26.9300, 26.9300 -0.5000)



LWSN falling wedge / buy on upside brkout on increased volume

LAWSON SOFTWARE (7.5400, 7.6900, 7.5000, 7.6100 +0.1000)



PETS symm. tri. / buy on upside brkout on increased volume

Petmed Express I (14.3700, 14.6800, 14.2400, 14.4800 +0.000)



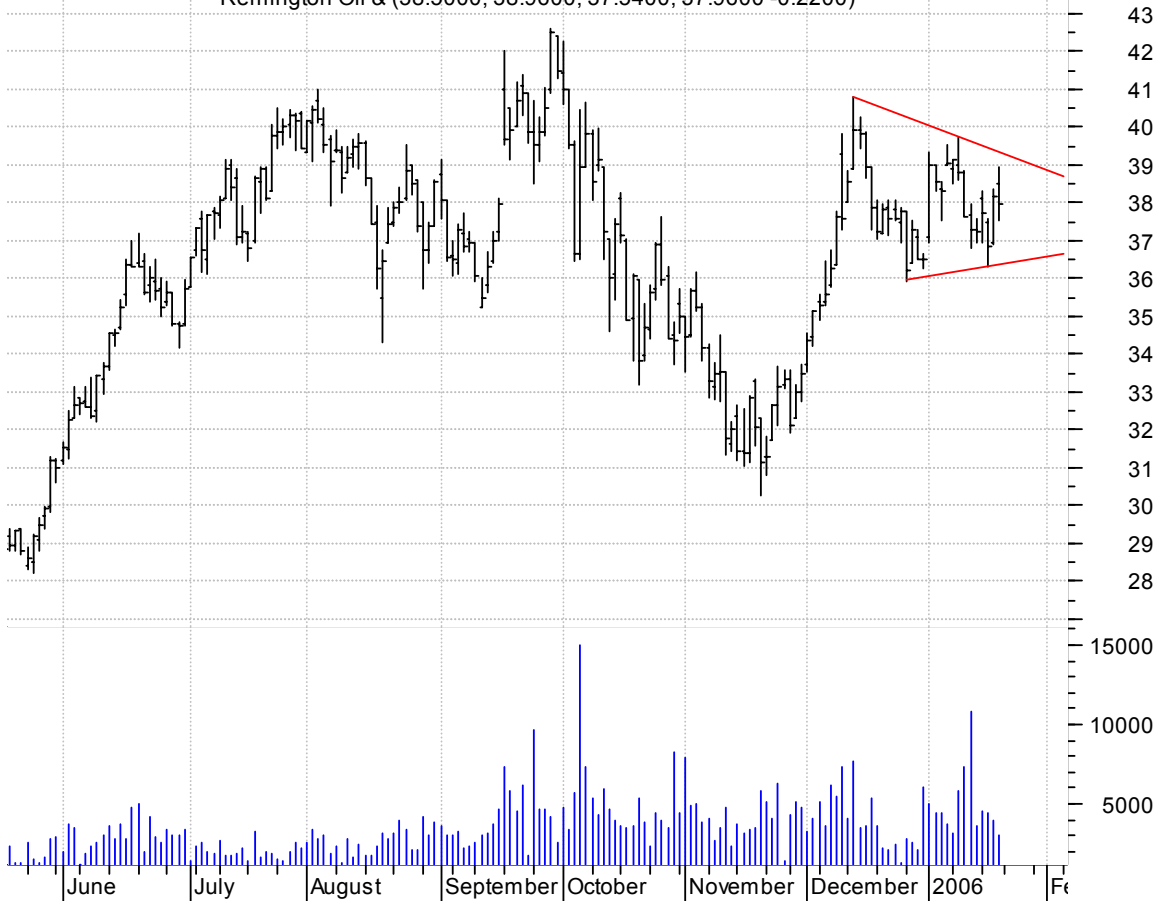
PHH symm. tri. / buy on upside brkout on increased volume

Phh Cor:NYSE (29.0500, 29.0500, 28.5000, 28.7500 -0.2500)



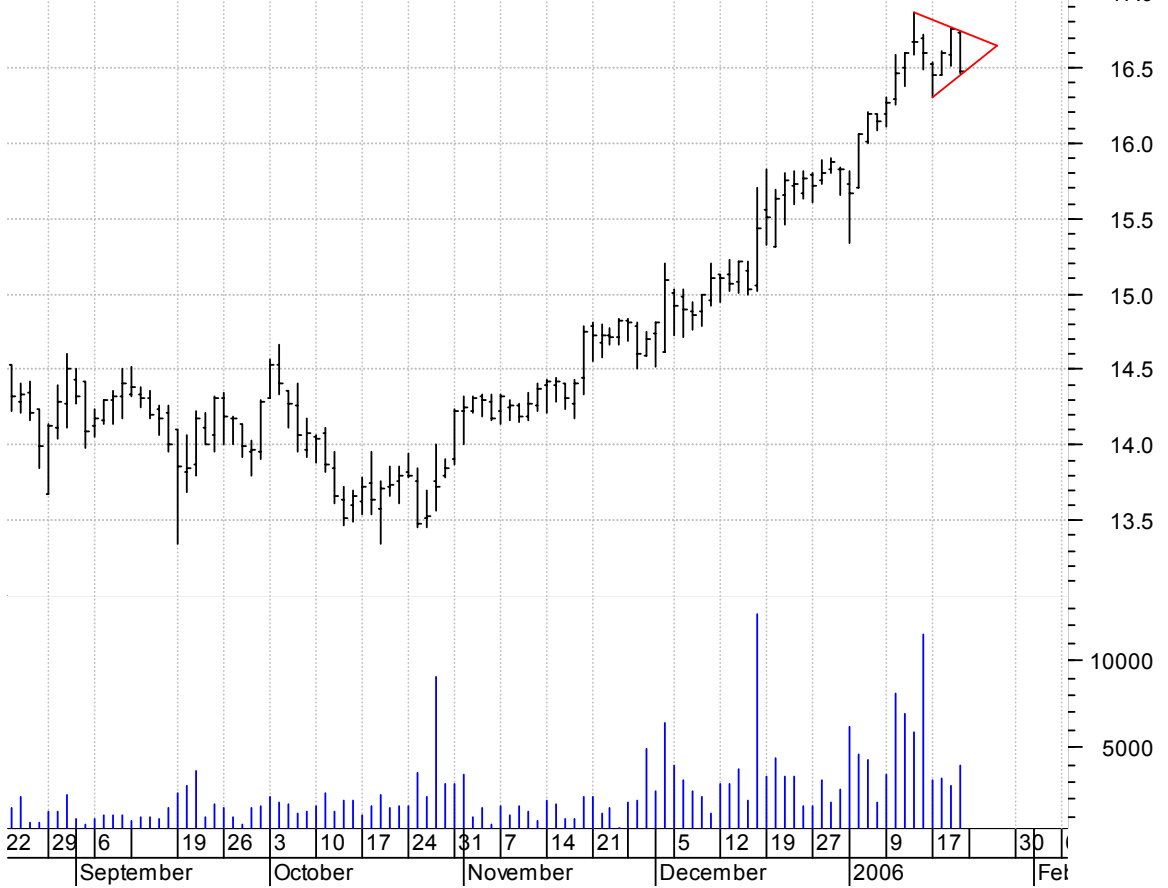
REM symm. tri. / buy on upside breakout on increased volume

Remington Oil & (38.5000, 38.9600, 37.5400, 37.9600 -0.2200)



SCS symm. tri. / buy on upside breakout on increased volume

Steelcase Inc CI (16.7300, 16.7400, 16.4600, 16.4800 -0.2700)



SKX sloppy symm. tri. preceded by 'pole-like' move / buy on upside brkout on increased volume



UPCS symm. tri. / buy on upside brkout on increased volume



WAB symm. tri. / buy on upside breakout on increased volume



chartpatterns.com
Chart Pattern Analysis for Timing the Markets

KMatras@aol.com