

**AAPL h. & sh. 'failure' / buy on upside brkout thru dotted red line on larger than normal volume**



**BLUD sloppy asc. tri. (discounting spike day) / buy on upside brkout on larger than normal volume**



**BWLD asc. tri. / buy on upside breakout on increased volume**

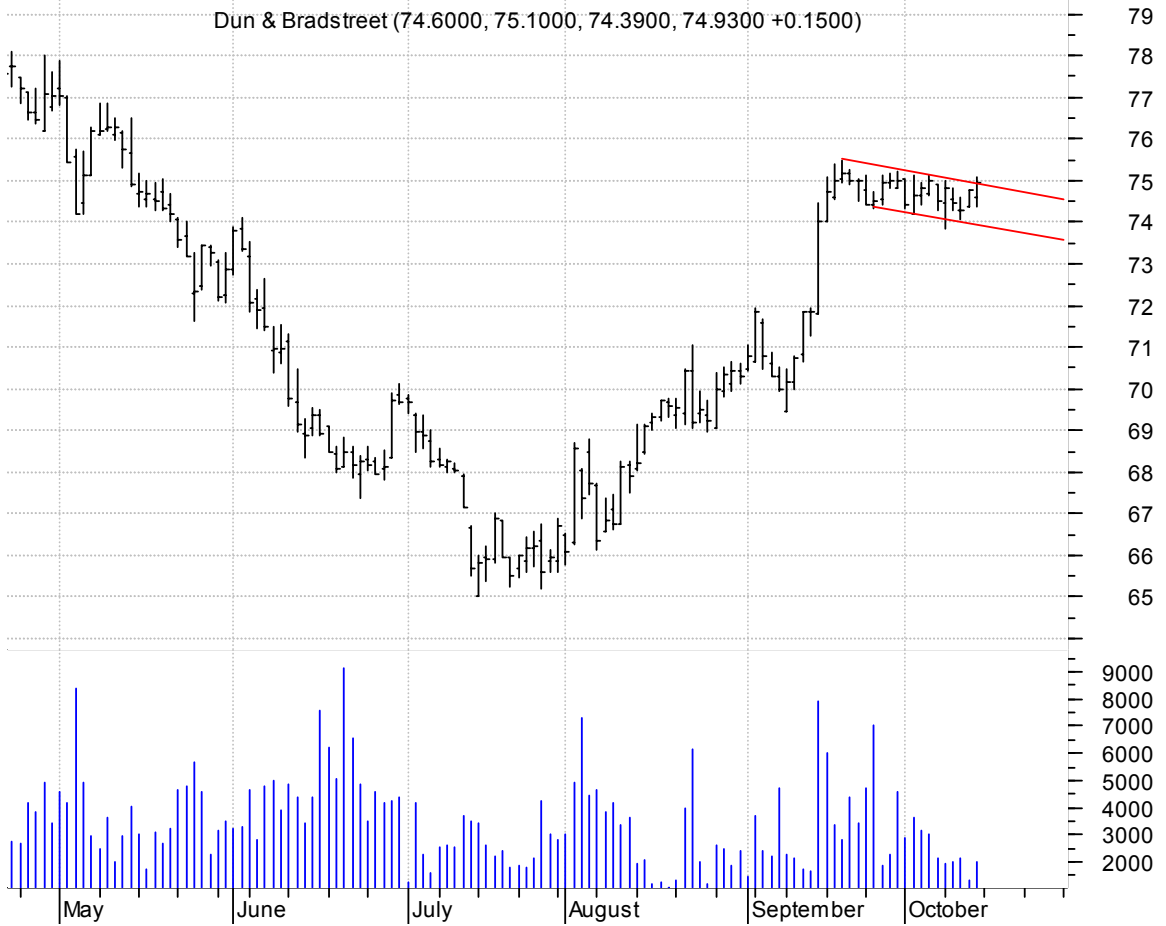


**CWTR asc. tri. / buy on upside breakout on increased volume**



**DNB elongated bullish flag / buy on upside brkout on increased volume**

Dun & Bradstreet (74.6000, 75.1000, 74.3900, 74.9300 +0.1500)

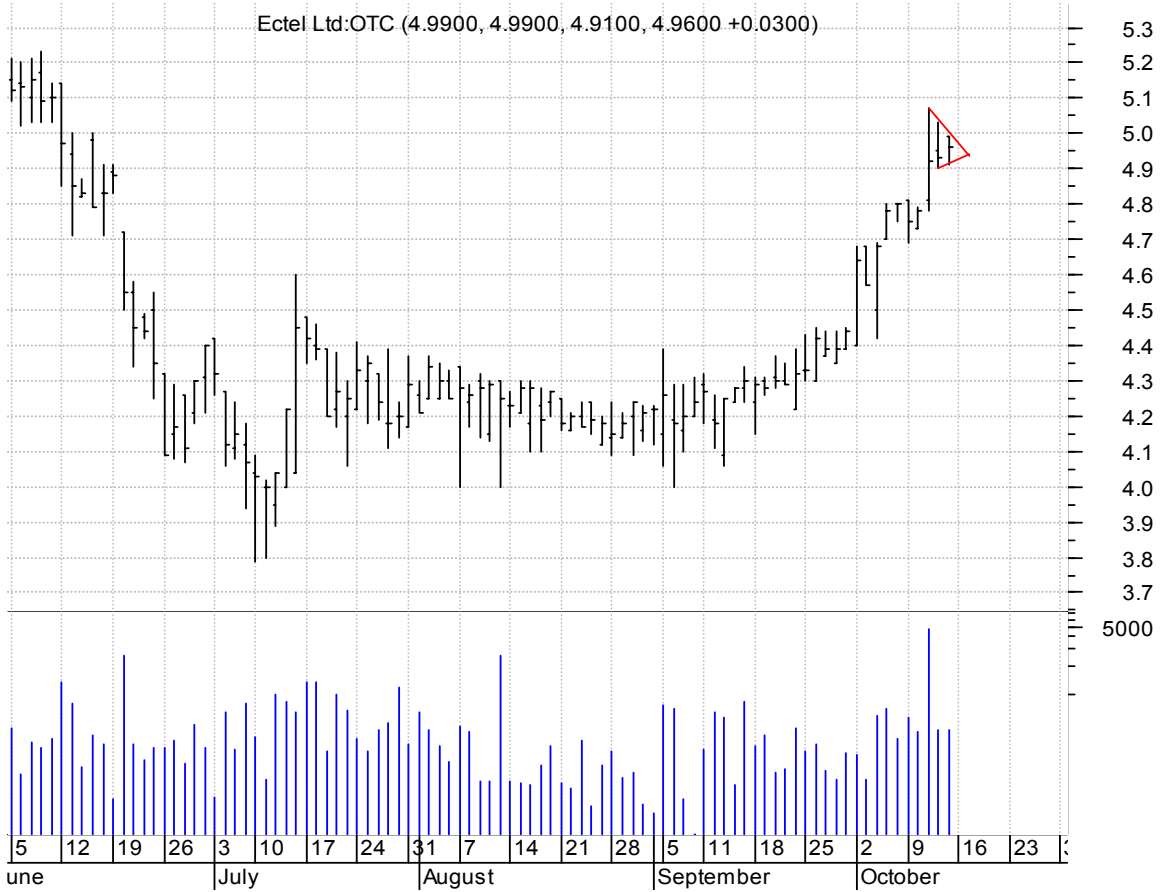


**DOX symm. tri. / buy on upside brkout on larger than normal volume**

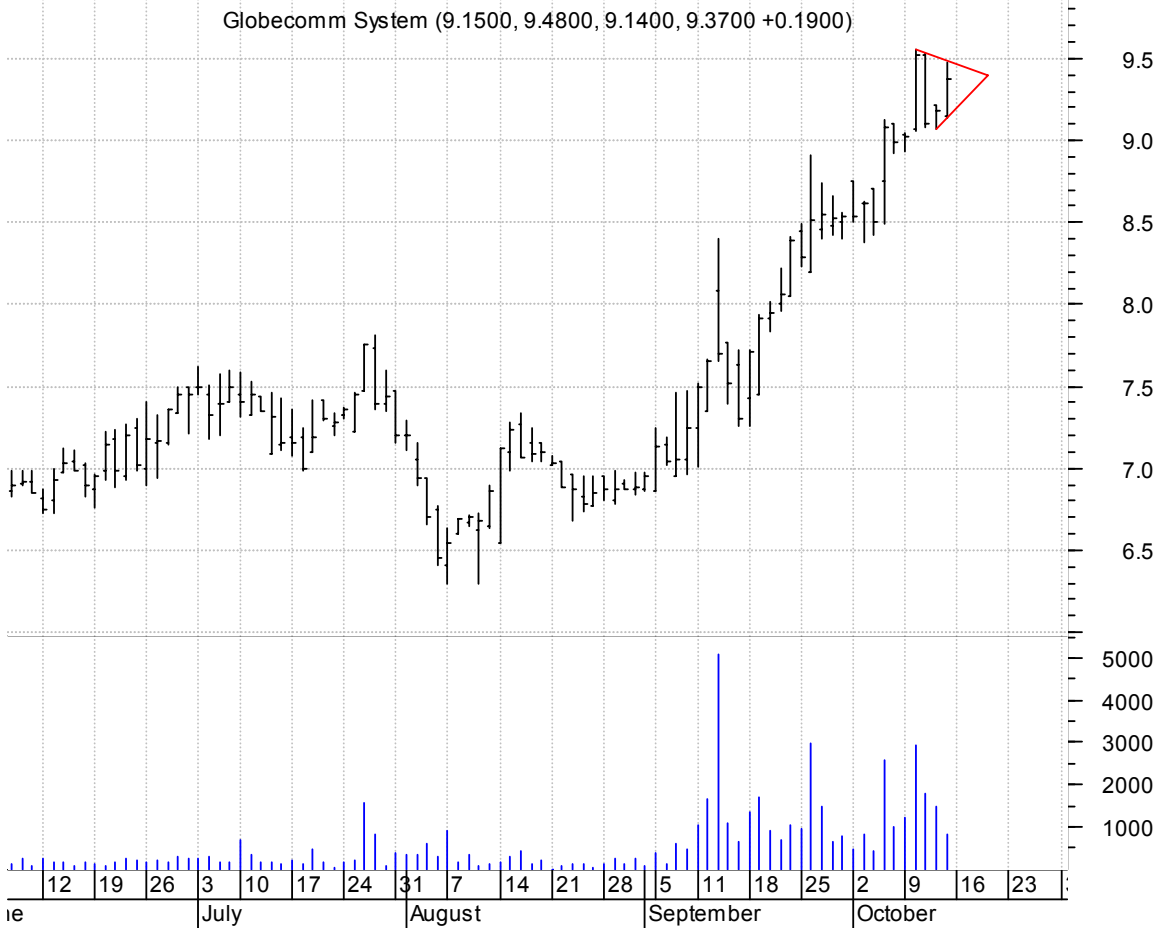
Amdocs Ltd.:NYSE (39.8500, 40.1100, 39.8200, 40.0200 +0.1800)



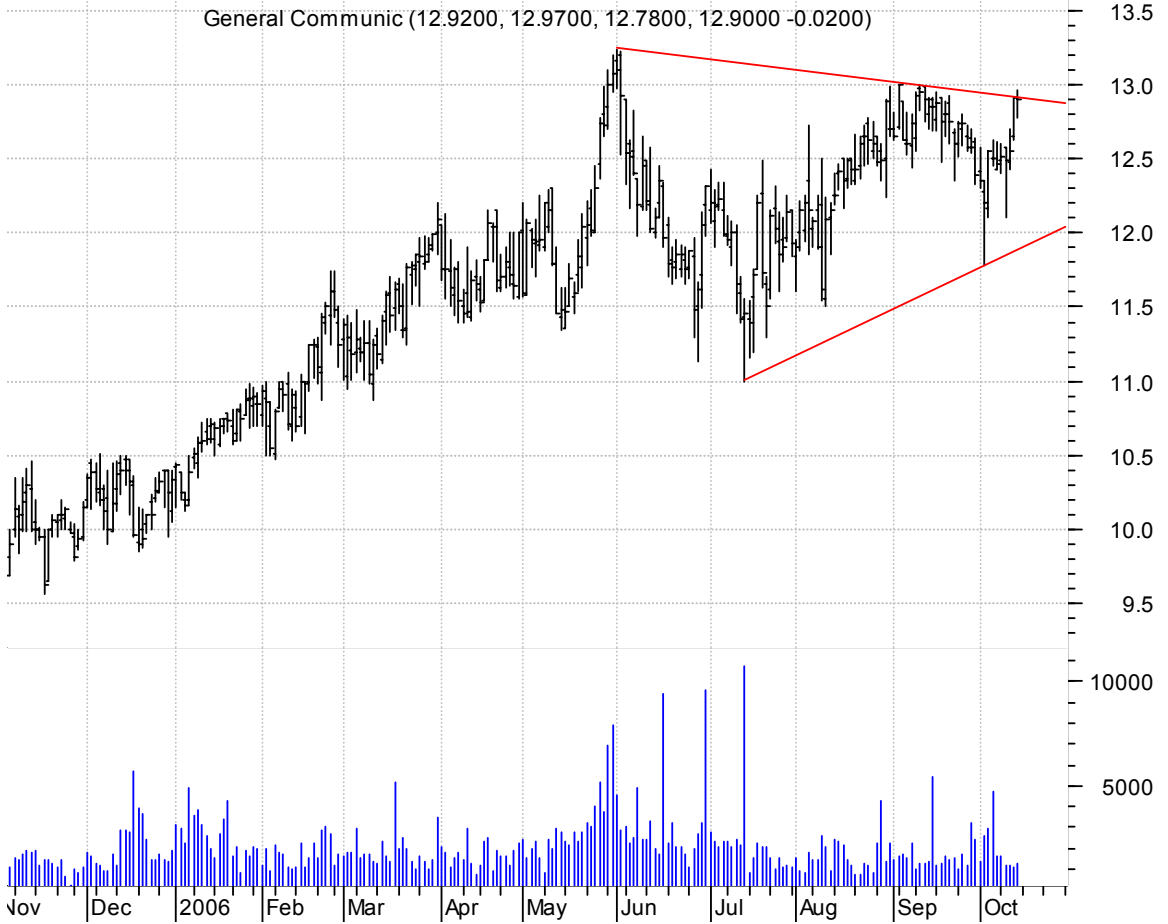
**ECTX symm. tri. preceded by 'pole-like' move (easier seen on intraday chart) / buy on upside brkout on increased volume**



**GCOM symm. tri. (better seen on intraday chart) / buy on upside brkout on increased volume**



**GNCMA symm. tri. / buy on upside breakout on increased volume**

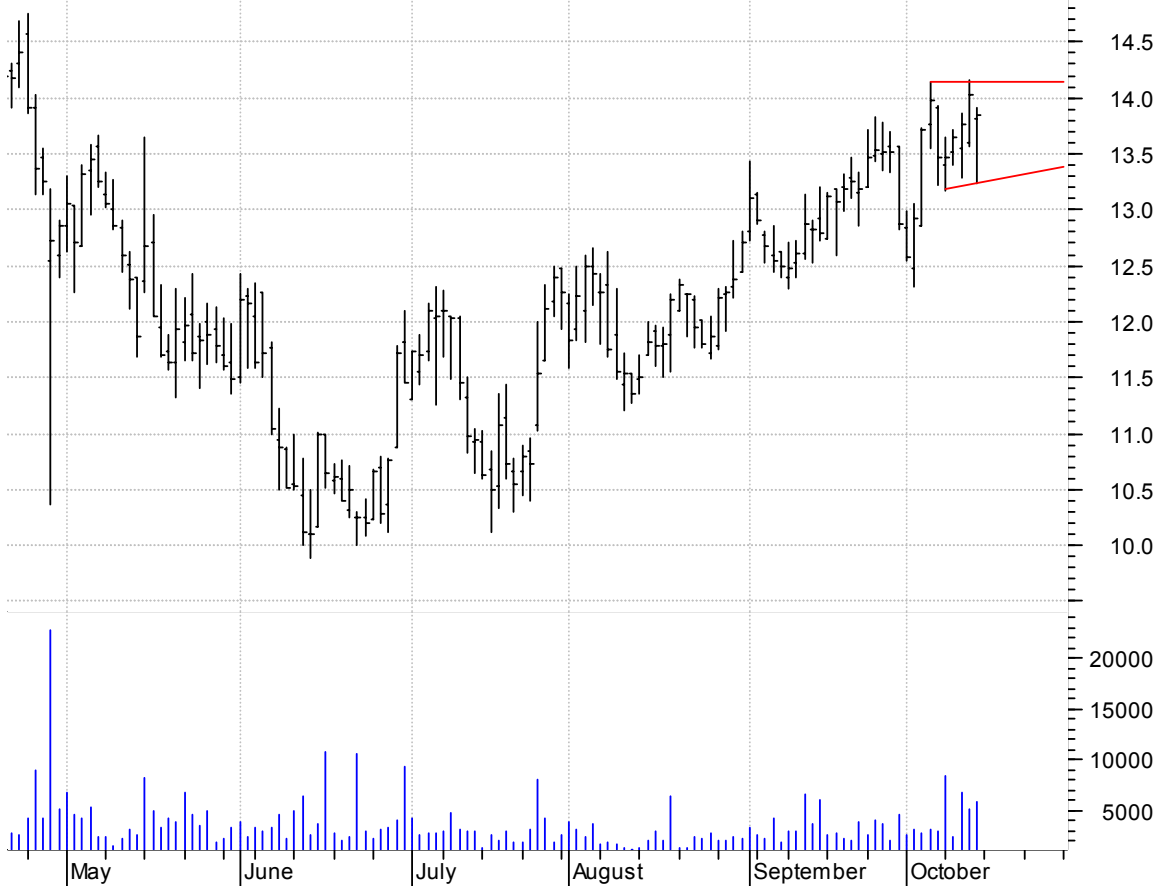


**HPY symm. tri. / buy on upside breakout on increased volume**



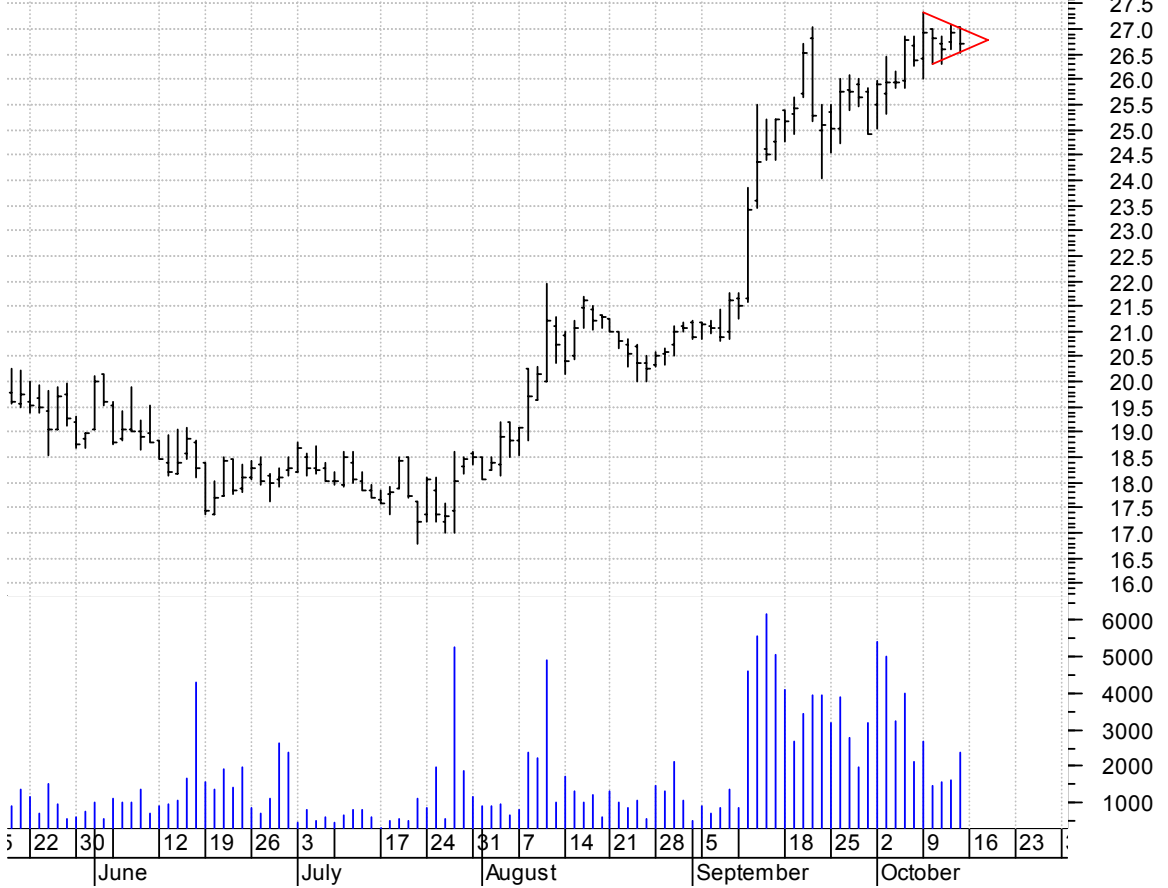
**IFSIA asc. tri. / buy on upside breakout on increased volume**

Interface Inc CI (13.8100, 13.9100, 13.2300, 13.8500 -0.1700)



**IVI symm. tri. (better seen on intraday chart) / buy on upside breakout on increased volume**

II-VI Inc:OTC (27.0300, 27.0300, 26.5200, 26.7200 -0.2100)



**ISIS symm. tri. preceded by 'pole-like' move / by on upside brkout on increased volume**



**KNOT sloppy falling wedge preceded by 'pole-like' move / buy on upside brkout on increased volume**



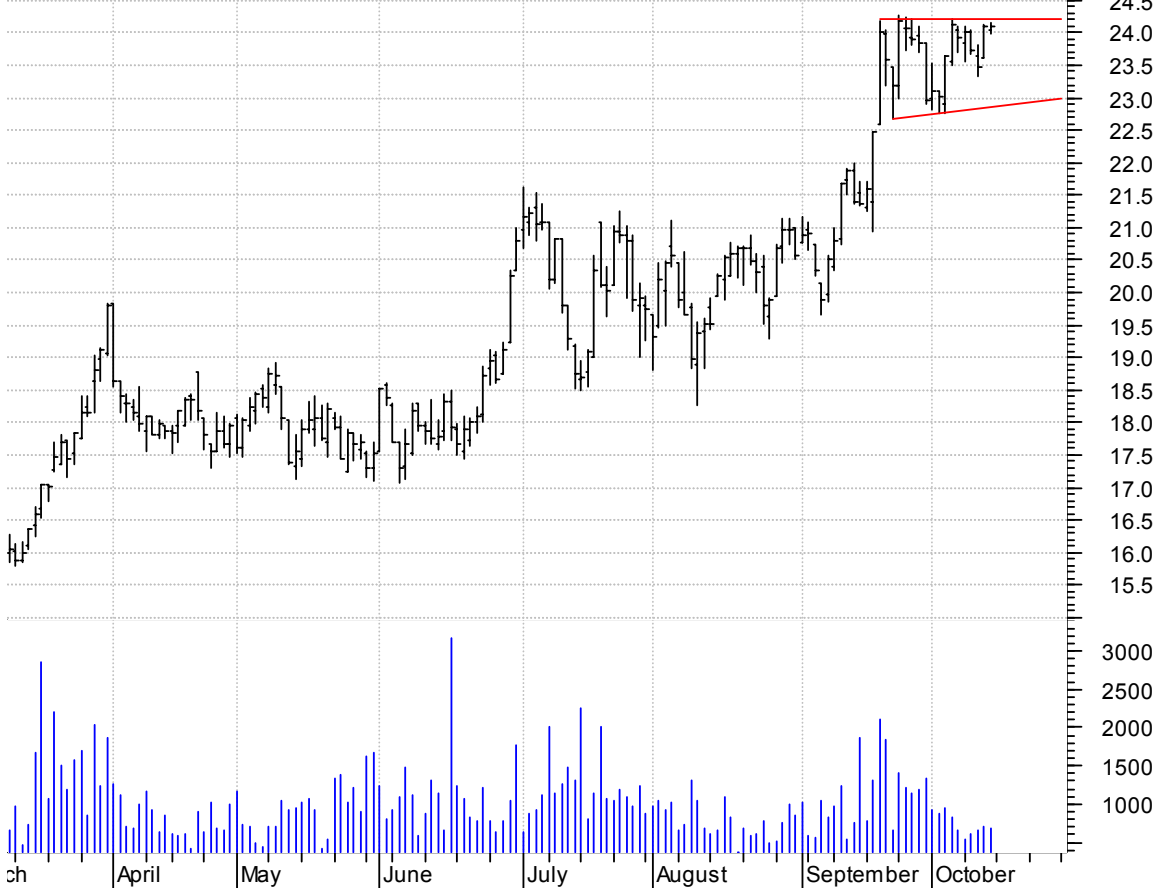
**LBY symm. tri. / buy on upside breakout on increased volume**

Libbey Inc:NYSE (10.8200, 11.0000, 10.6900, 10.8600 +0.0400)



**MCS asc. tri. / buy on upside breakout on increased volume**

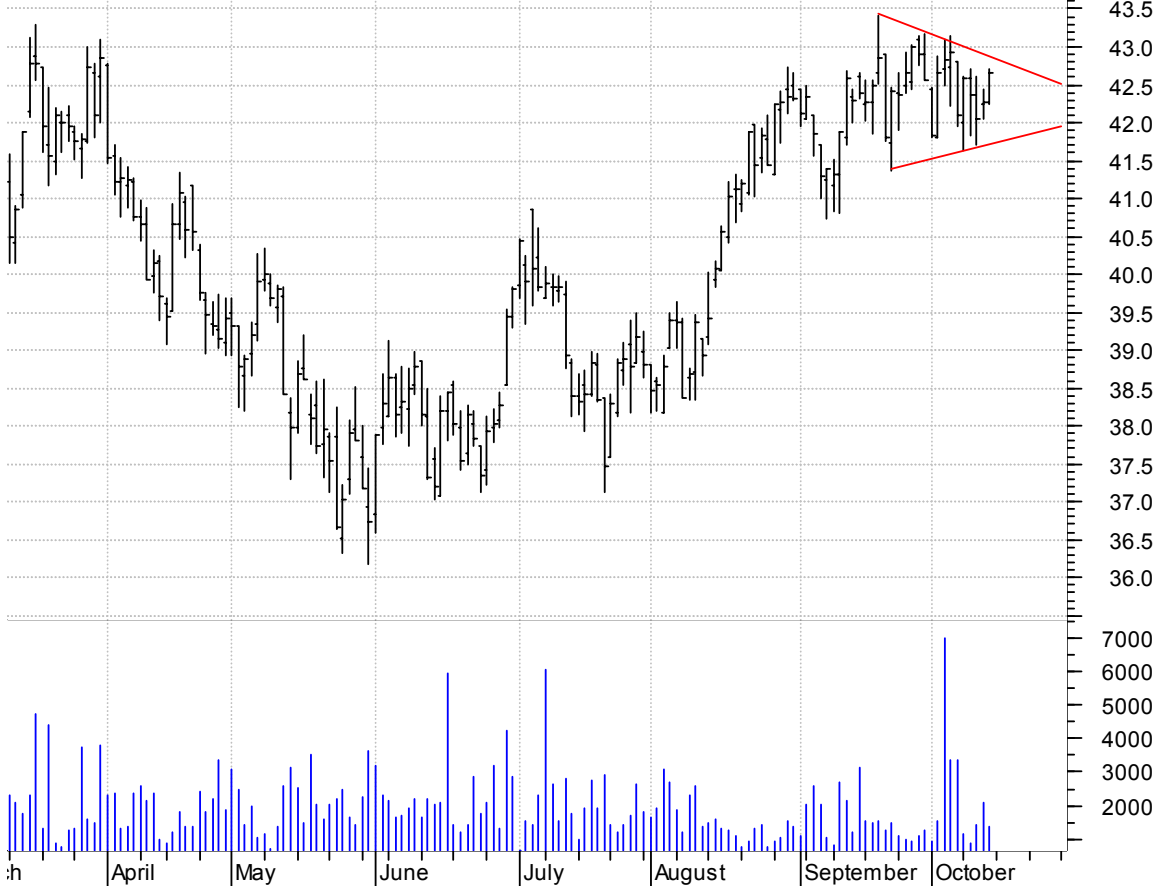
Marcus Cp:NYSE (24.0500, 24.1500, 23.9800, 24.1000 +0.000)





**PEI symm. tri. / buy on upside breakout on increased volume**

Penn Real Estate (42.2700, 42.7000, 42.2500, 42.6500 +0.3800)



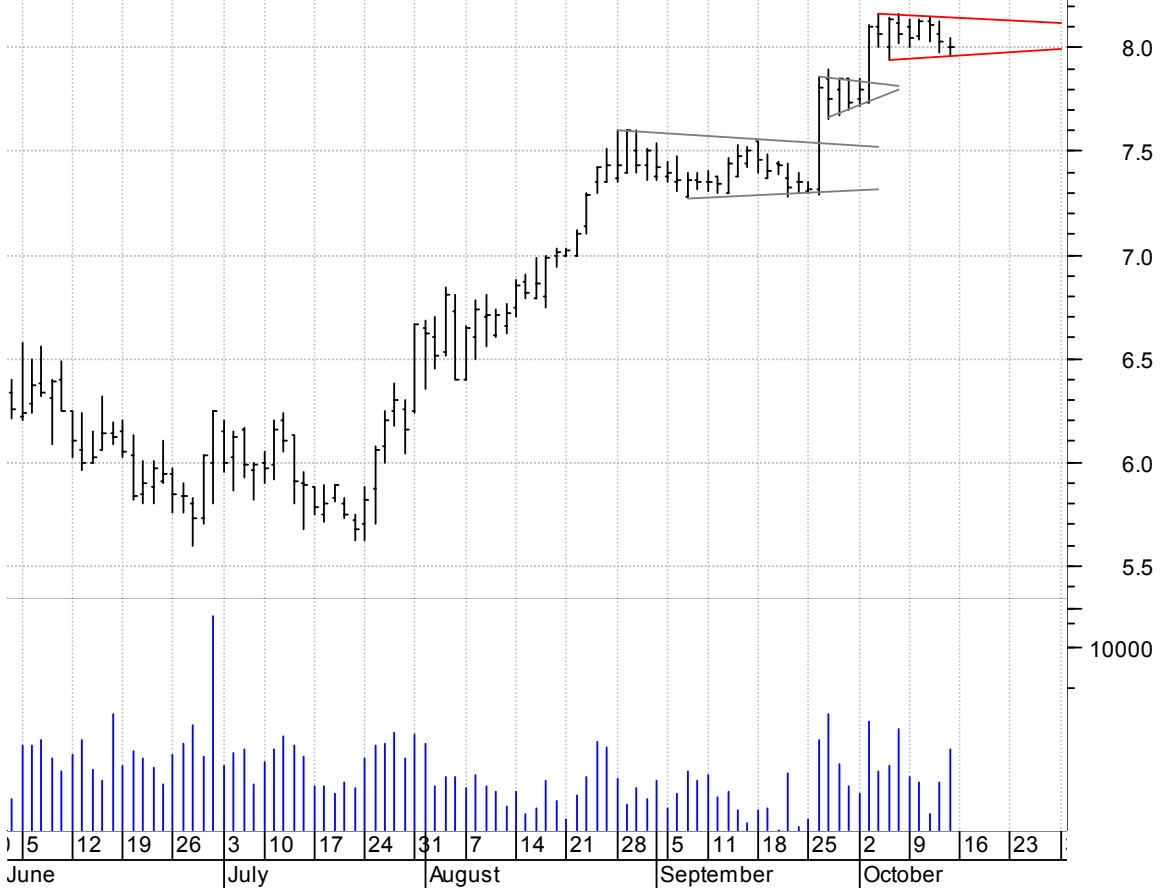
**QSII symm. tri. / buy on upside breakout on increased volume**

Quality Systems (39.4300, 40.7900, 39.3600, 40.3800 +0.8600)



**RGR symm. tri. preceded by 'pole-like' moves / buy on upside brkout on increased volume**

Sturm Ruger & Co (8.0000, 8.0500, 7.9600, 8.0000 -0.0300)



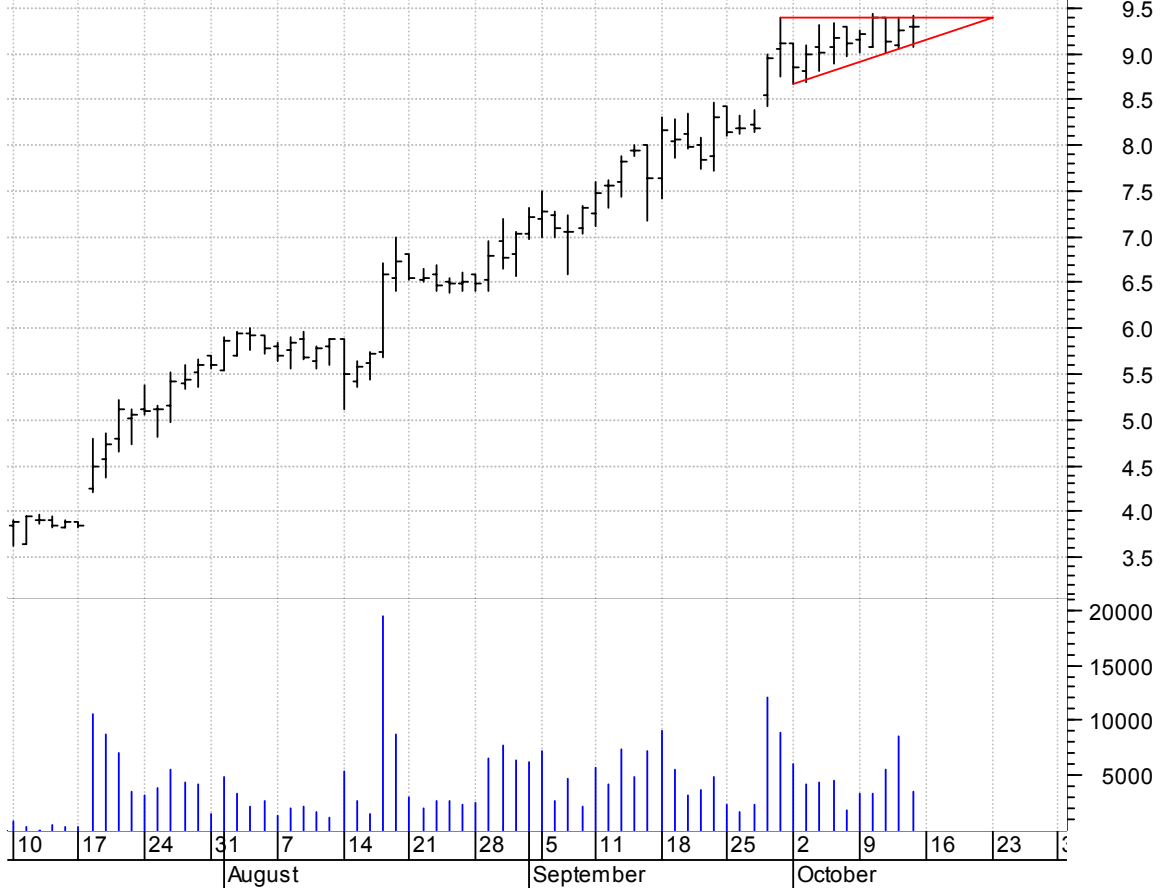
**SMSI bullish pennant / buy on upside brkout on increased volume**

Smith Micro Soft (16.9000, 16.9000, 16.3600, 16.5100 -0.4300)



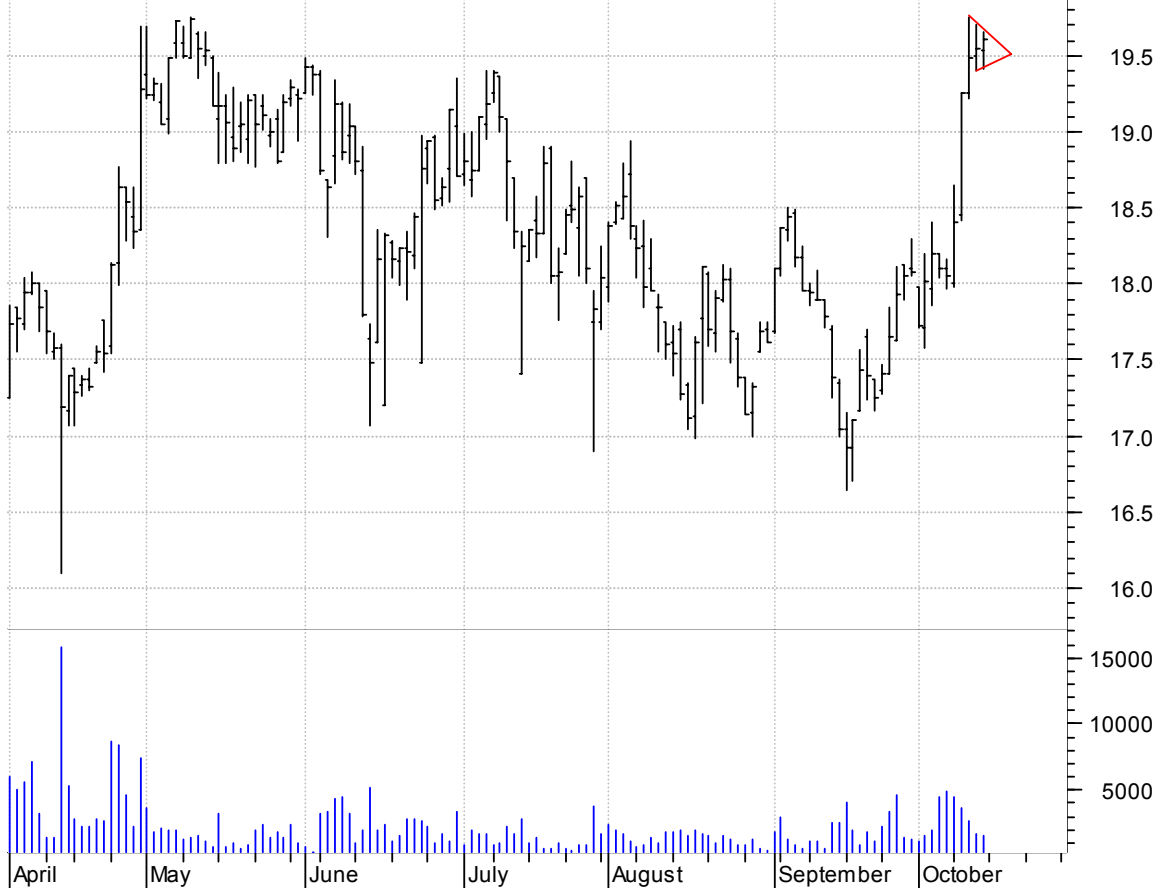
**STEC asc. tri. / buy on upside brkout on increased volume**

SIMPLE TECHNOLOG (9.3000, 9.4200, 9.0800, 9.2900 +0.0300)



**TWI bull pennant / buy on upside brkout on increased volume**

Titan Internatio (19.5400, 19.6500, 19.4100, 19.6100 +0.0600)



**WW asc. tri. / buy on upside breakout on increased volume**



**chartpatterns.com**

Chart Pattern Analysis for Timing the Markets

[KMatras@aol.com](mailto:KMatras@aol.com)