

**ACLI symm. tri. / buy on upside brkout on increased volume**



**BKUNA symm. tri. / buy on upside brkout on increased volume**



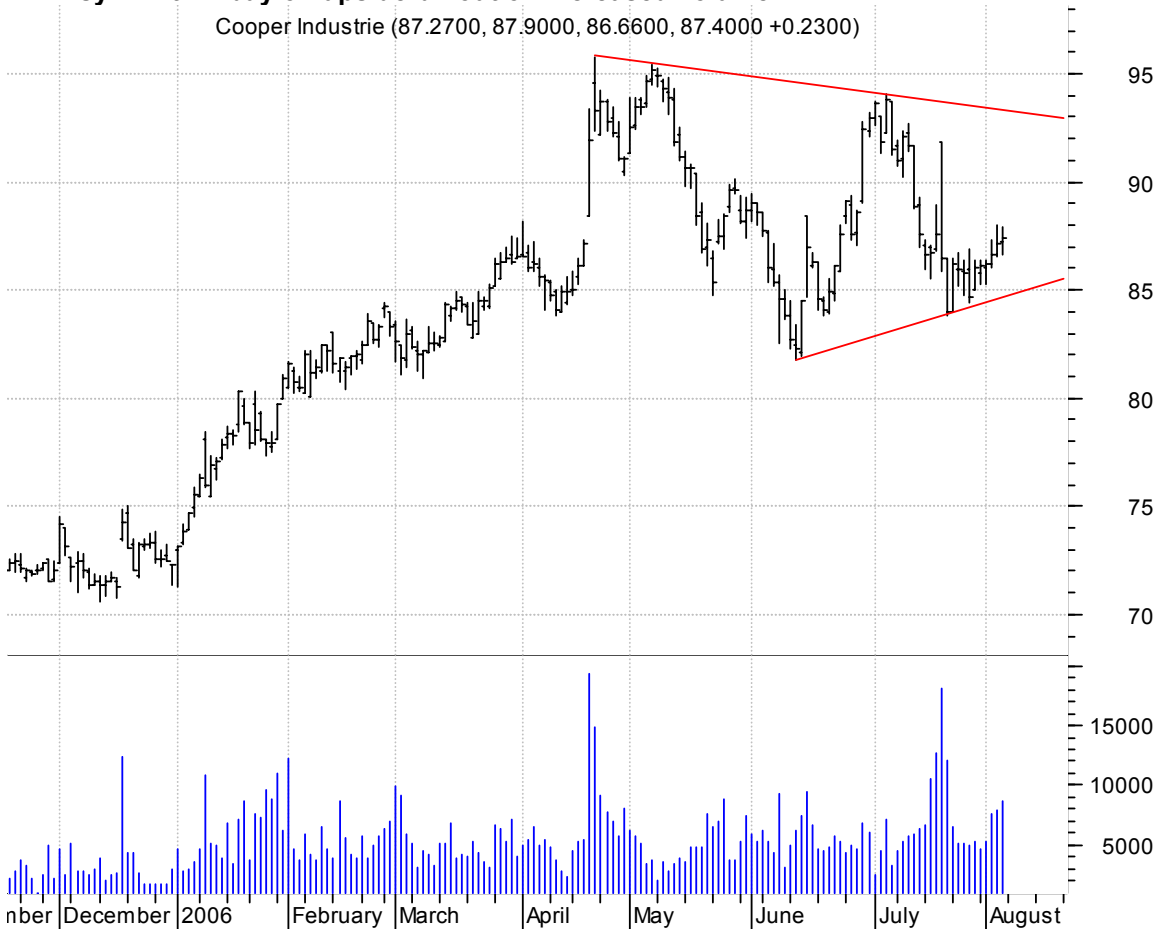
**BW symm. tri. / buy on upside brkout on increased volume**

Brush Engineered (23.2000, 23.2700, 22.2700, 22.7000 -0.2500)



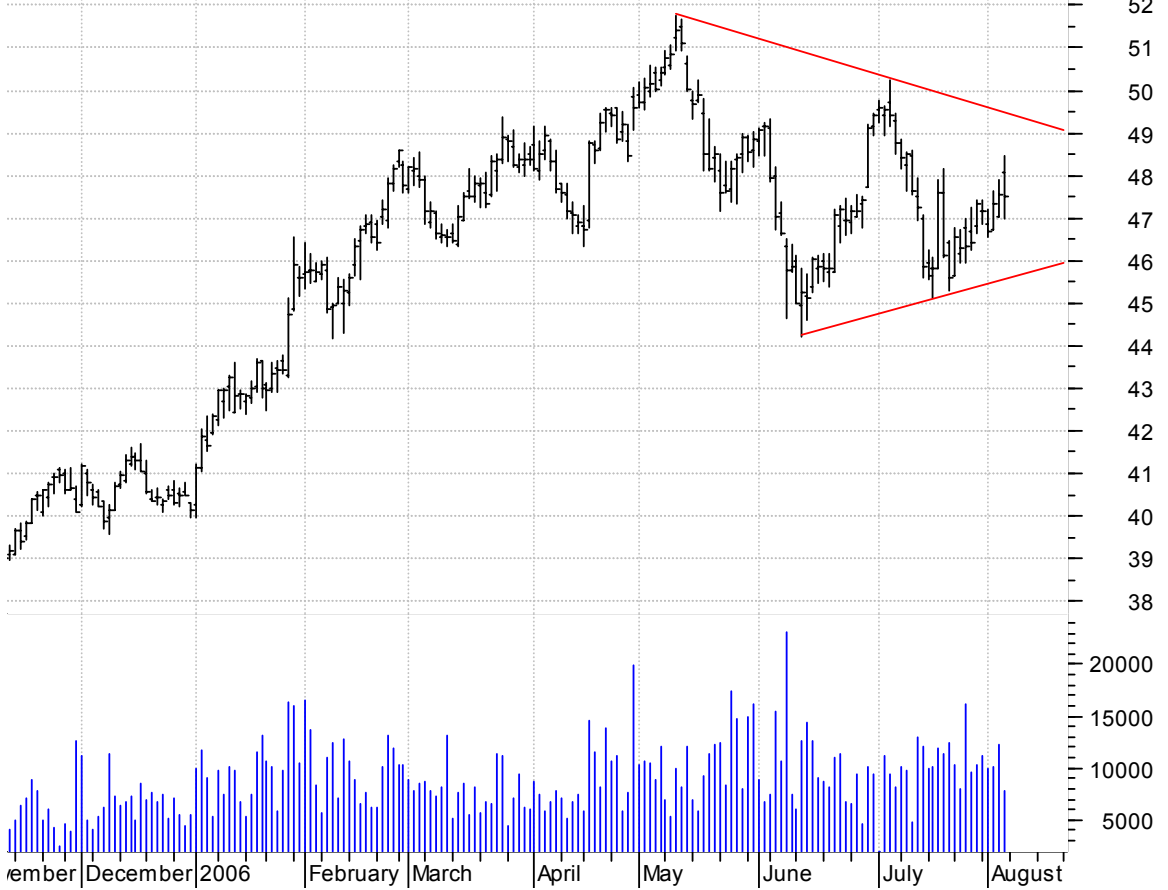
**CBE symm. tri. / buy on upside brkout on increased volume**

Cooper Industrie (87.2700, 87.9000, 86.6600, 87.4000 +0.2300)



**DOV symm. tri. / buy on upside brkout on increased volume**

Dover Cp:NYSE (48.0500, 48.4700, 47.0000, 47.5100 -0.0400)



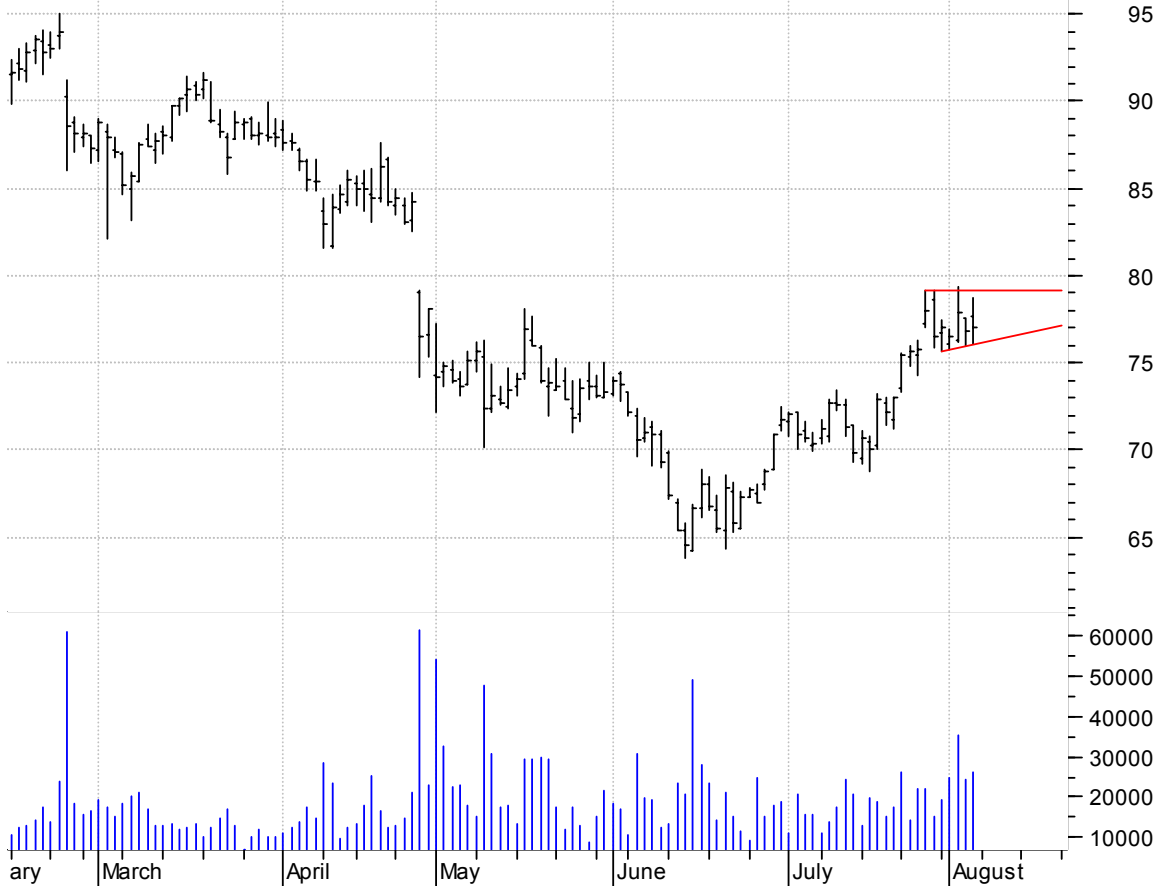
**DRQ symm. tri. / buy on upside brkout on increased volume**

Dril-Quip Inc:NY (86.2000, 87.1200, 81.6500, 83.1300 -2.8700)



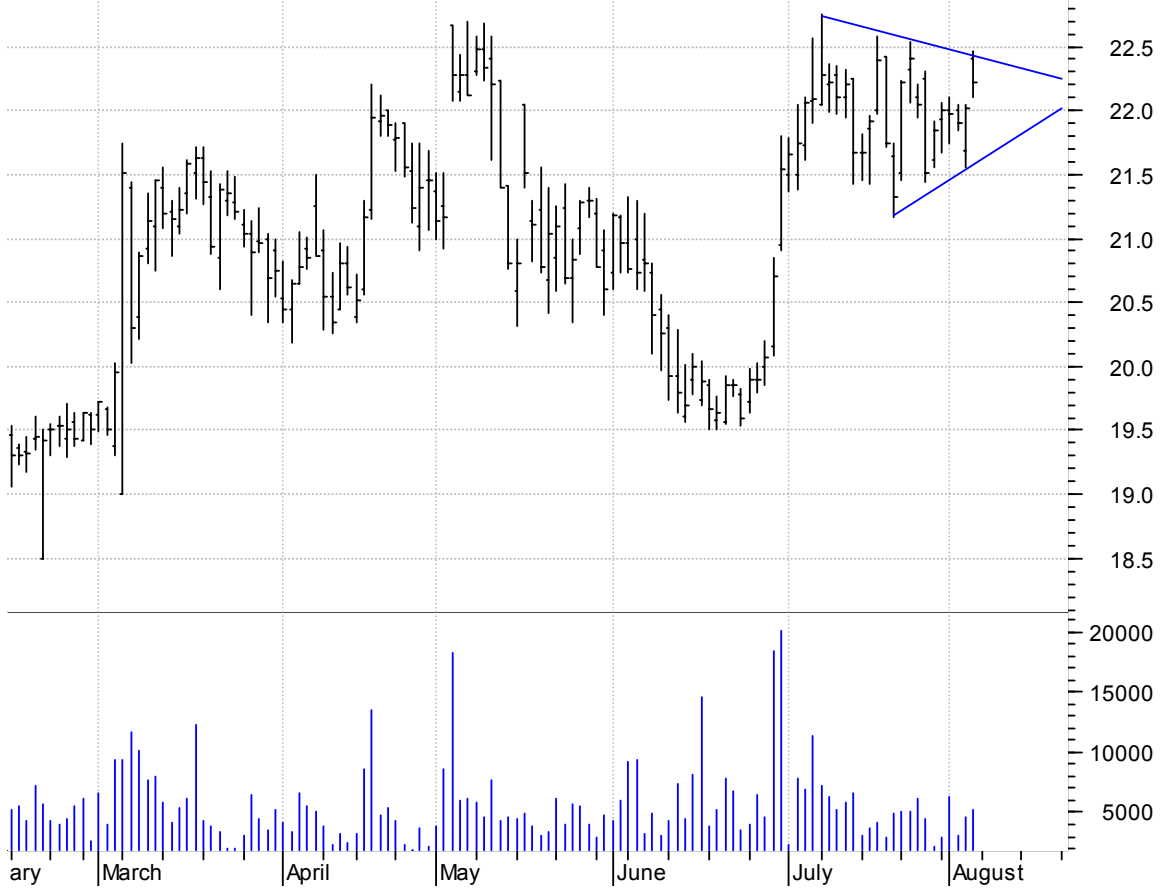
**ESRX symm. tri. / buy on upside breakout on increased volume**

Express Scripts (77.7100, 78.7300, 76.1000, 77.0000 +0.2100)



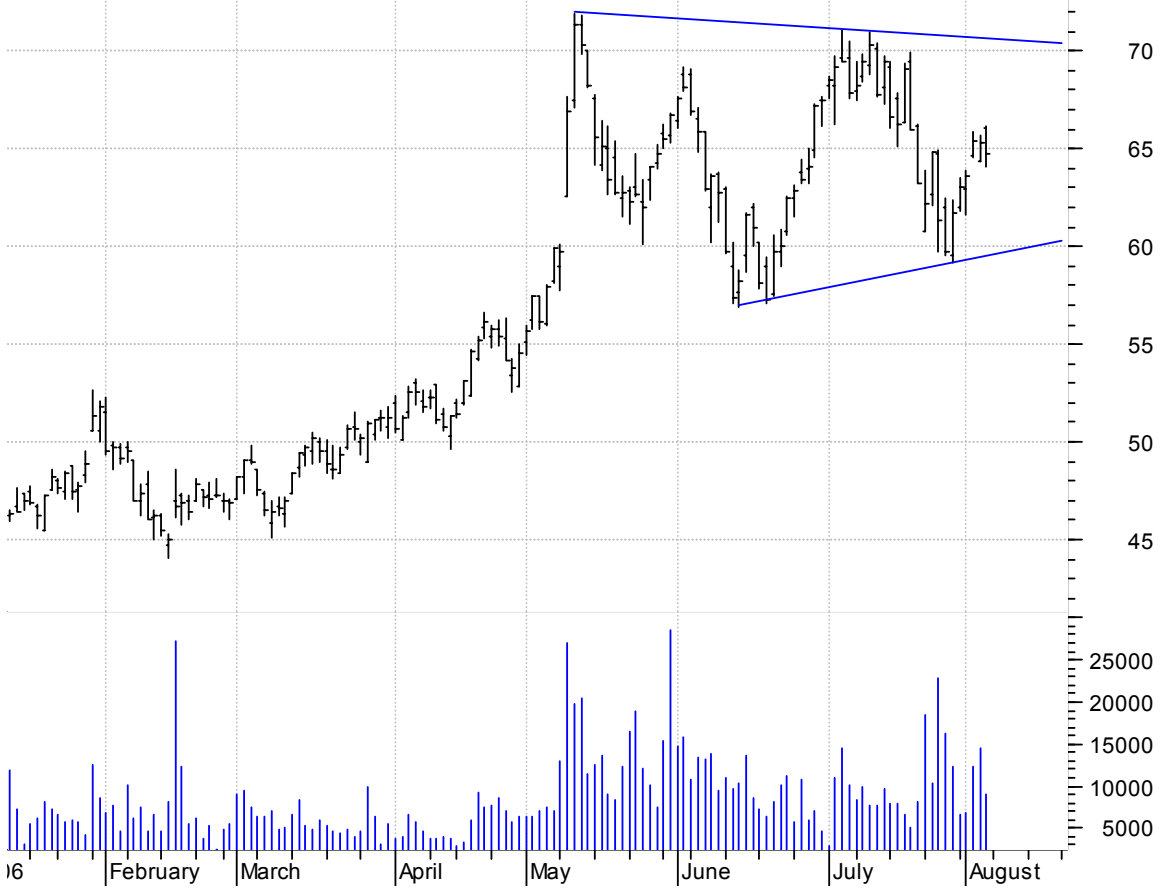
**FCH symm. tri. preceded by 'pole-like' move / buy on upside breakout on increased volume**

Felcor Lodging T (22.4000, 22.4700, 22.1100, 22.2200 +0.2000)



**FTI symm. tri. / buy on upside brkout on increased volume**

FMC TECHNOLOGIES (66.1000, 66.1900, 64.0600, 64.7600 -0.5700)



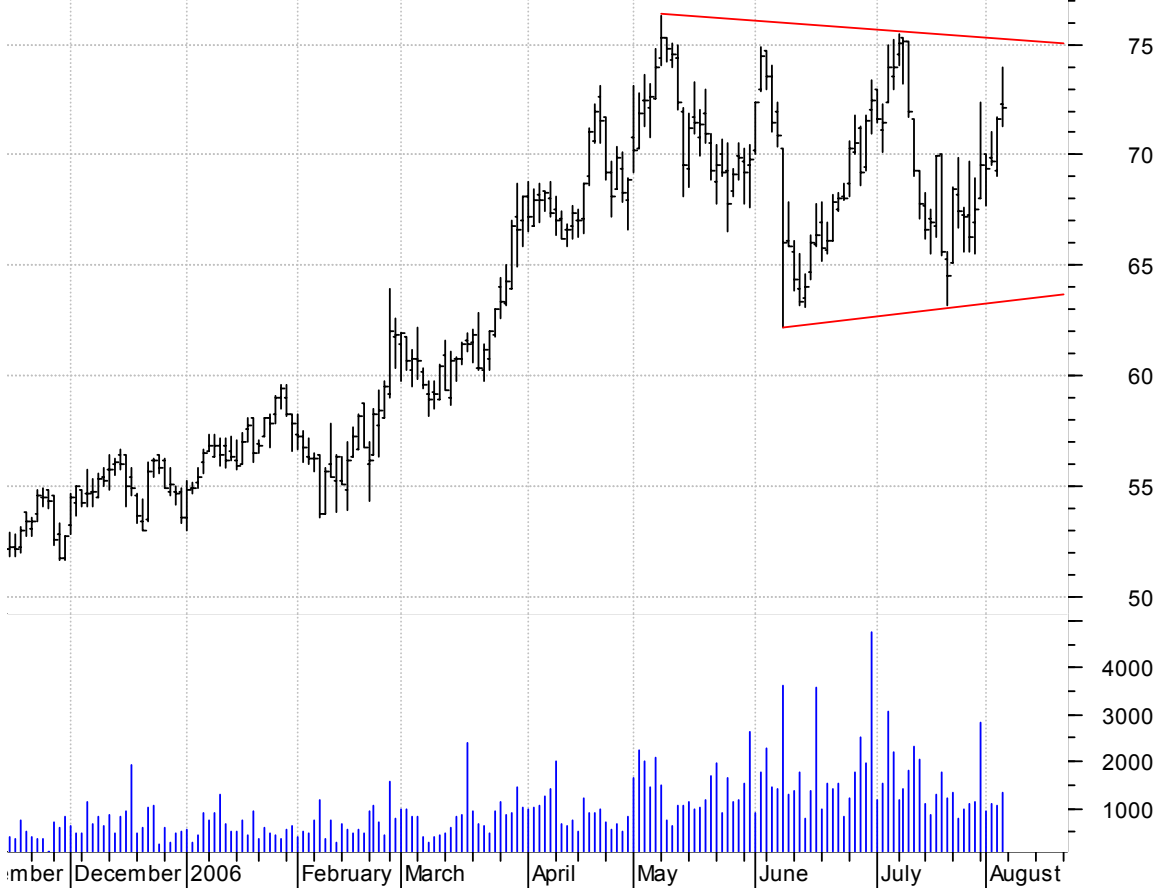
**GDJ falling wedge / buy on upside brkout on increased volume**

Gardner Denver I (36.9700, 37.6700, 35.6100, 36.3300 -0.0100)



**GLYT symm. tri. / buy on upside breakout on increased volume**

Genlyte Group In (72.3200, 73.9700, 71.2600, 72.1000 +0.4500)



**HLX symm. tri. preceded by 'pole-like' move / buy on upside breakout on increased volume**

Helix Energy Sol (38.9500, 39.1300, 37.1900, 37.6300 -0.9500)



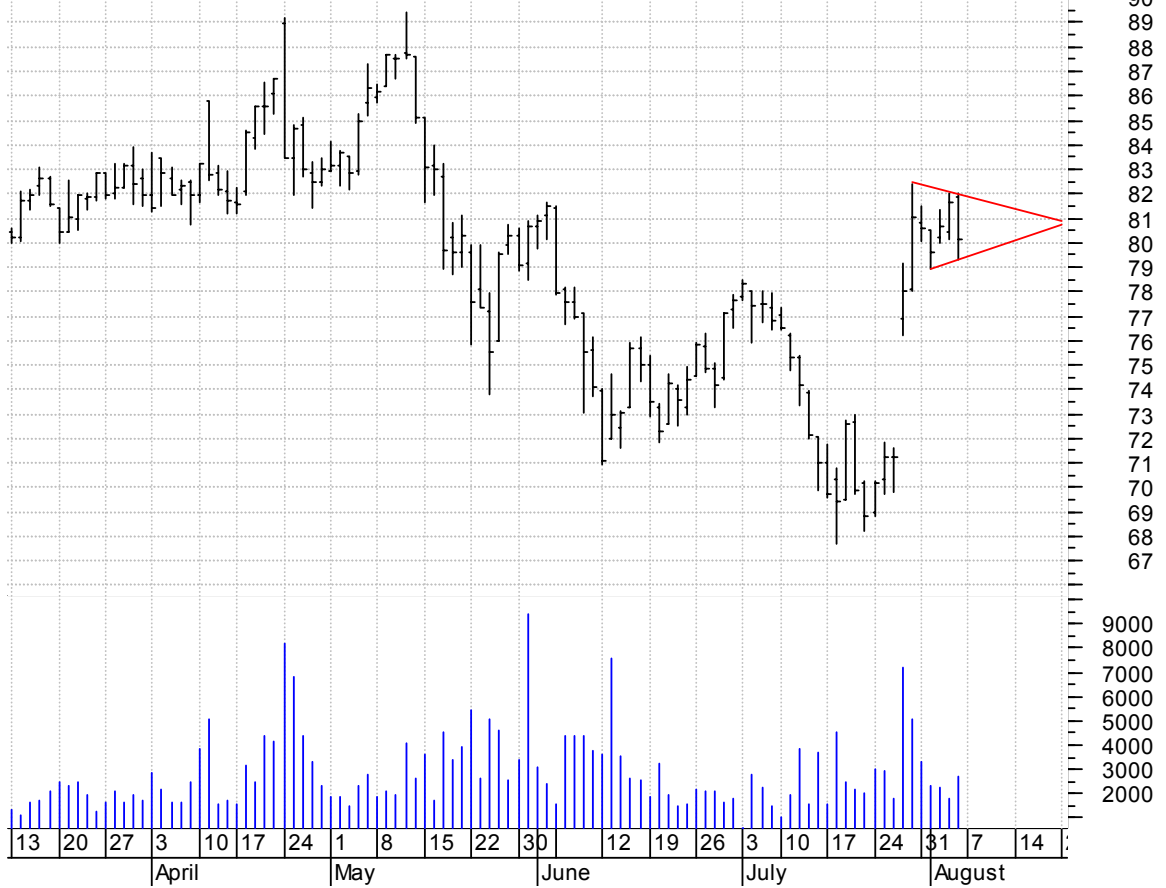
**HRS symm. tri. preceded by 'pole-like' move / buy on upside brkout on increased volume**

Harris Corp (The) (45.0800, 45.2500, 43.9900, 44.4200 -0.8800)



**HSC symm. tri. preceded by 'pole-like' move / buy on upside brkout on increased volume**

Harsco Corp:NYSE (81.8600, 82.0000, 79.3300, 80.1300 -1.5300)



**ICLR bull pennant / buy on upside breakout on increased volume**



**IPCR falling wedge preceded by 'pole-like' move / buy on upside breakout thru dotted red line on increased volume**





**LMNX asc. tri. / buy on upside brkout on increased volume**

Luminex Cp:OTC (17.4900, 17.6600, 16.9900, 17.0900 -0.2300)



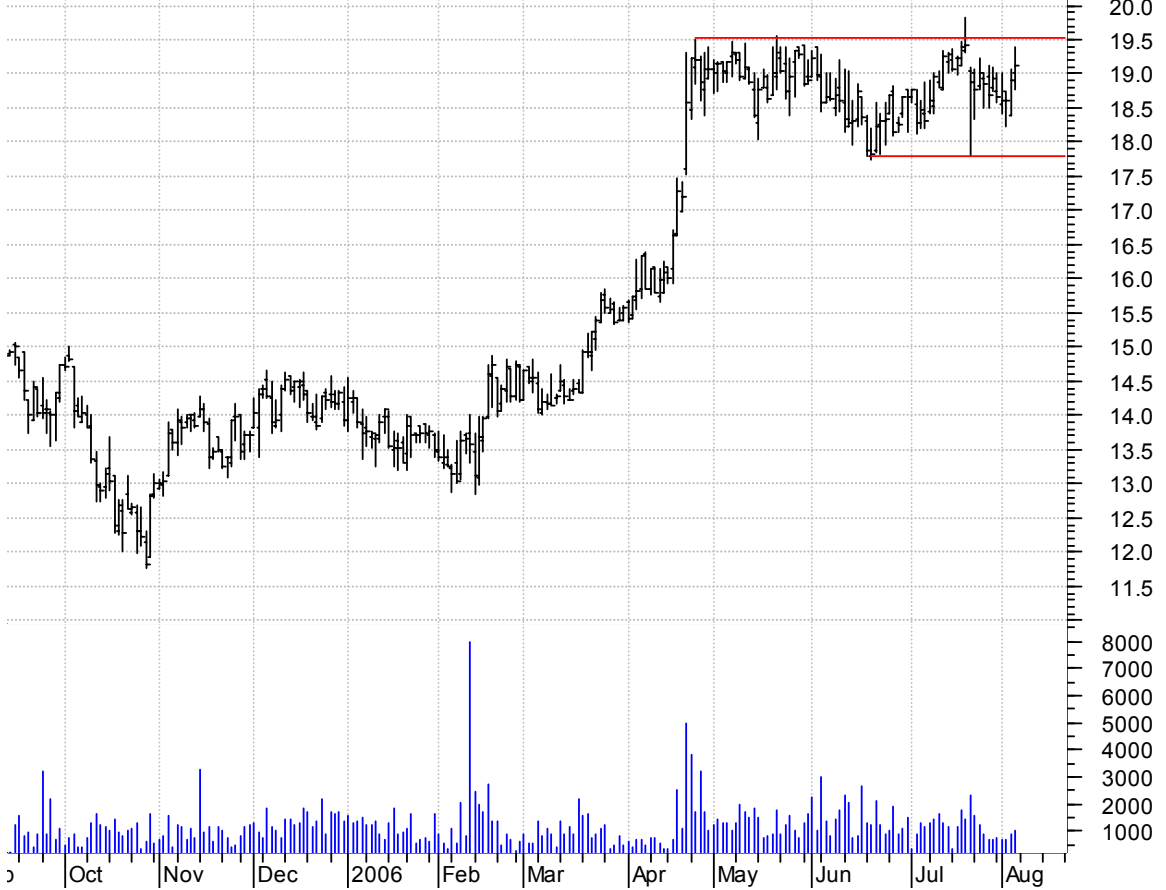
**LMS sloppy bullish flagging / buy on upside brkout on increased volume**

Lamson & Session (28.7500, 29.2700, 27.2200, 27.5300 -0.9900)



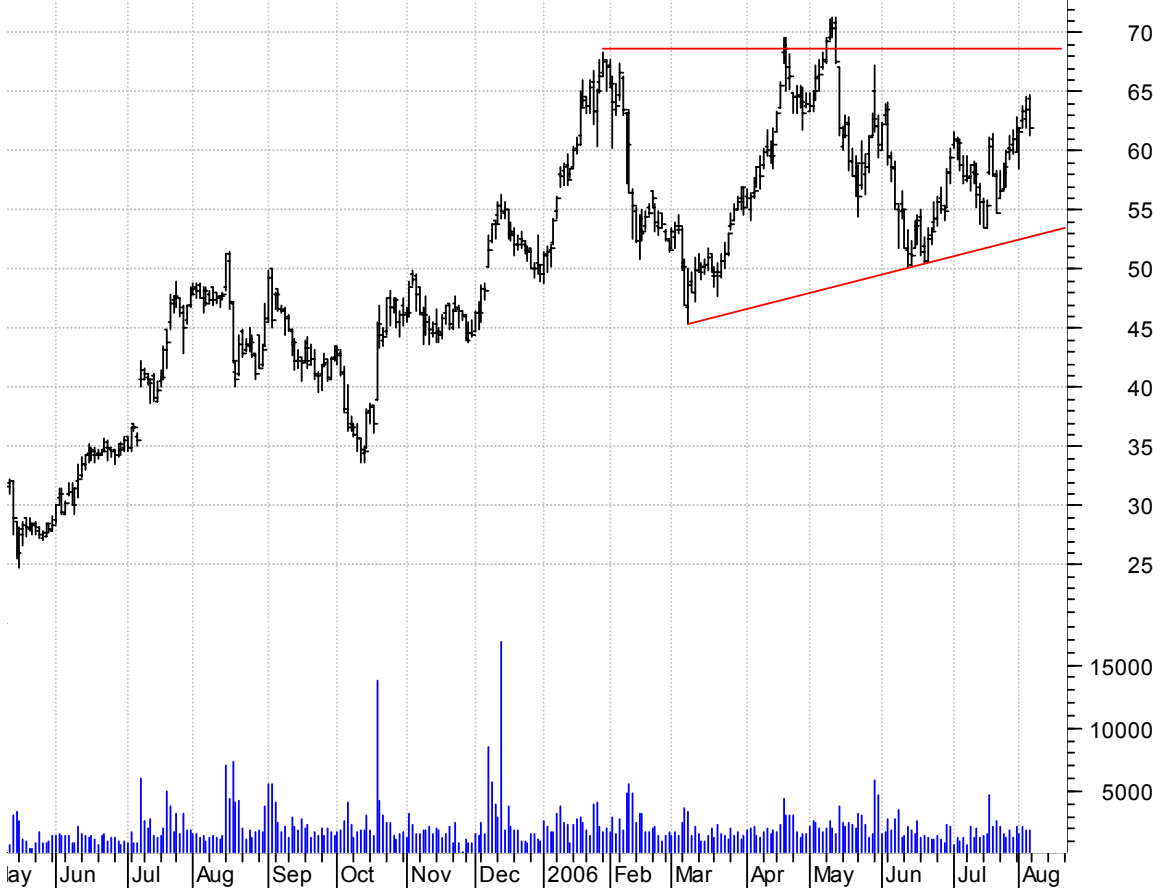
**LNET rectangle preceded by 'pole-like' move / buy on upside brkout on increased volume**

Lodgenet Enterta (19.0000, 19.3900, 18.7800, 19.1200 +0.2200)



**LUFK sloppy asc. tri. / buy on upside brkout on increased volume**

Lufkin Industrie (64.3900, 64.8100, 61.2400, 62.0000 -1.5500)



**MEK symm. tri. / buy on upside breakout on increased volume**



**OIL symm. tri. / buy on upside breakout on increased volume**



**ORB bullish flagging / buy on upside brkout on increased volume**

Orbital Sciences (17.8400, 17.8600, 17.1200, 17.5100 -0.1500)



**OS symm. tri. / buy on upside brkout on increased volume**

Oregon Steel Mil (48.5000, 49.1700, 46.2900, 47.1900 -0.5100)



**SHOO bullish pennant / buy on upside brkout on increased volume**

Madden (Scott) L (34.1200, 34.5000, 33.2700, 33.7900 +0.0300)



**TEX symm. tri. / buy on upside brkout on increased volume**

Terex Cp:NYSE (47.1000, 47.9500, 44.9800, 45.5400 -0.6600)



**TRMA symm. tri. / buy on upside brkout on increased volume**

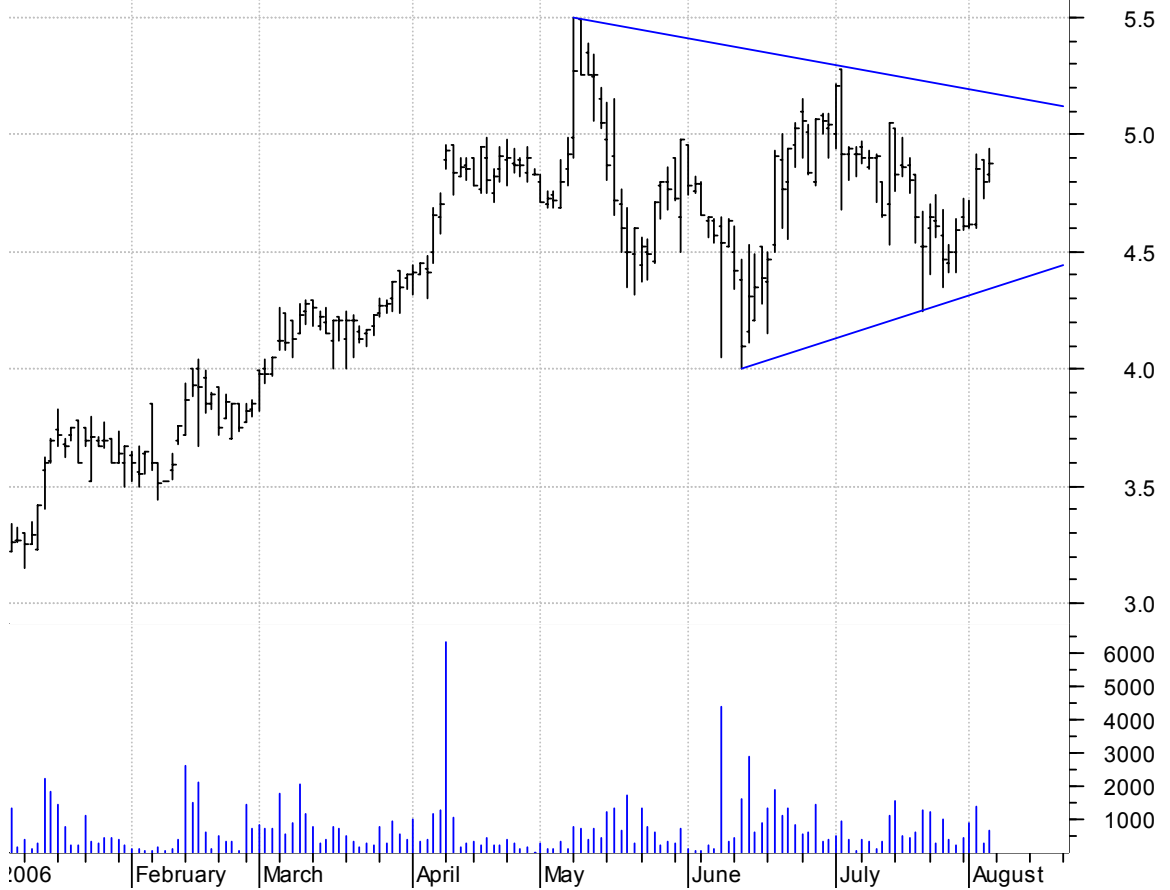


**TTI symm. tri. / buy on upside brkout on increased volume**



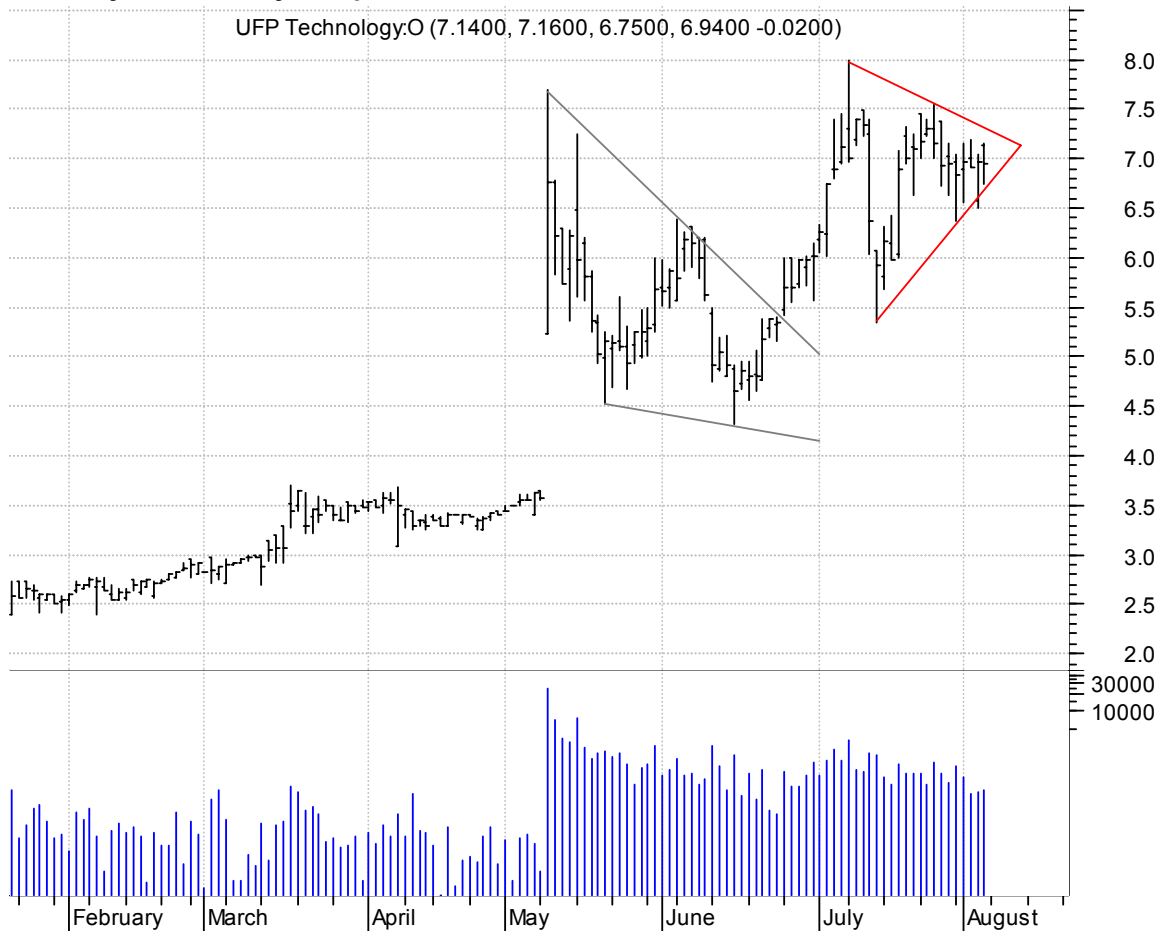
**TTIL symm. tri. / buy on upside brkout on increased volume**

TTI Team Telecom (4.8300, 4.9400, 4.8000, 4.8800 +0.0800)



**UFPT symm. tri. / buy on upside brkout on increased volume**

UFP Technology:O (7.1400, 7.1600, 6.7500, 6.9400 -0.0200)



**WHQ asc. tri. / buy on upside breakout on increased volume**



**WOR symm. tri. preceded by 'pole-like' move / buy on upside breakout on increased volume**





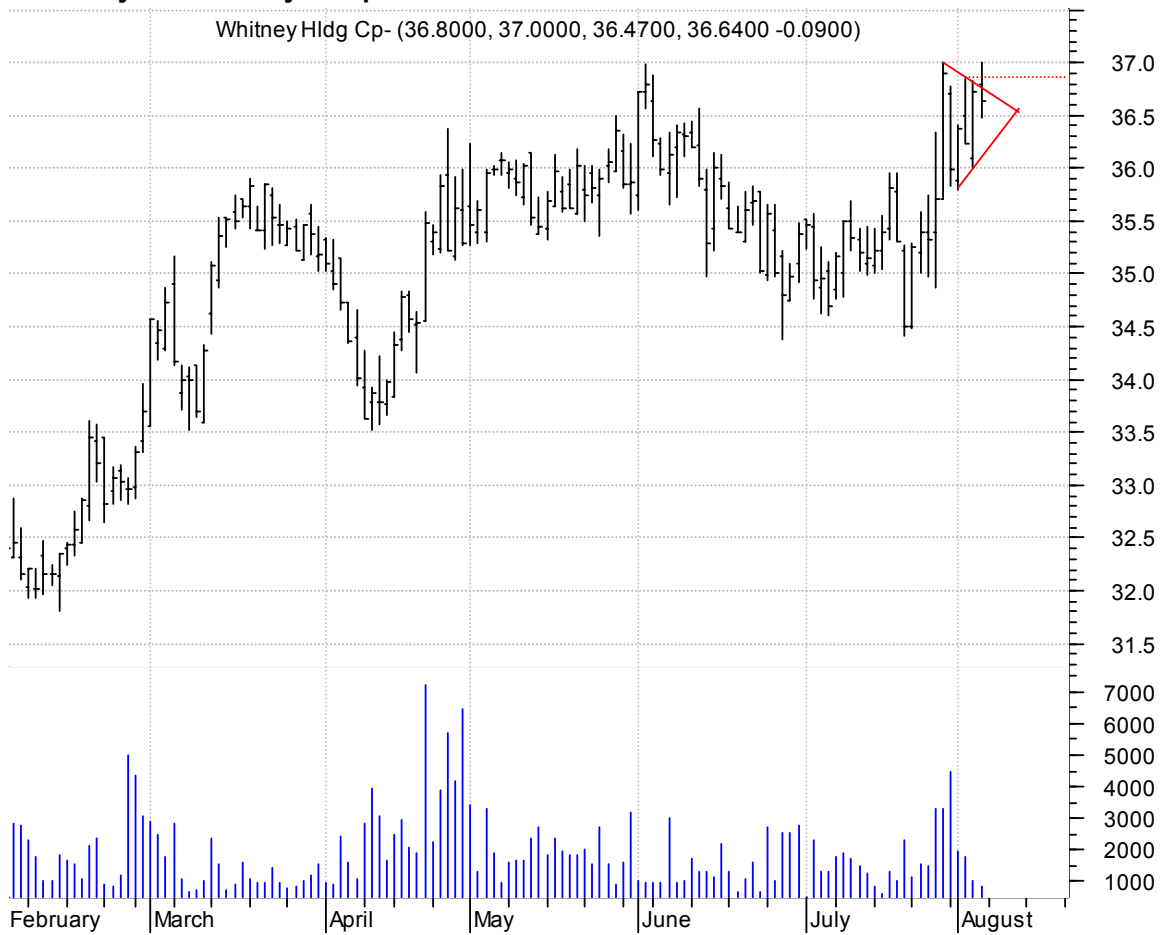
**WRES symm. tri. / buy on upside breakout on increased volume**

WARREN RESOURCES (14.6400, 14.6700, 13.4900, 13.7700 -0.5100)



**WTNY symm. tri. / buy on upside breakout thru dotted red line on increased volume**

Whitney Hldg Cp- (36.8000, 37.0000, 36.4700, 36.6400 -0.0900)



**chartpatterns.com**  
Chart Pattern Analysis for Timing the Markets

[KMatras@aol.com](mailto:KMatras@aol.com)