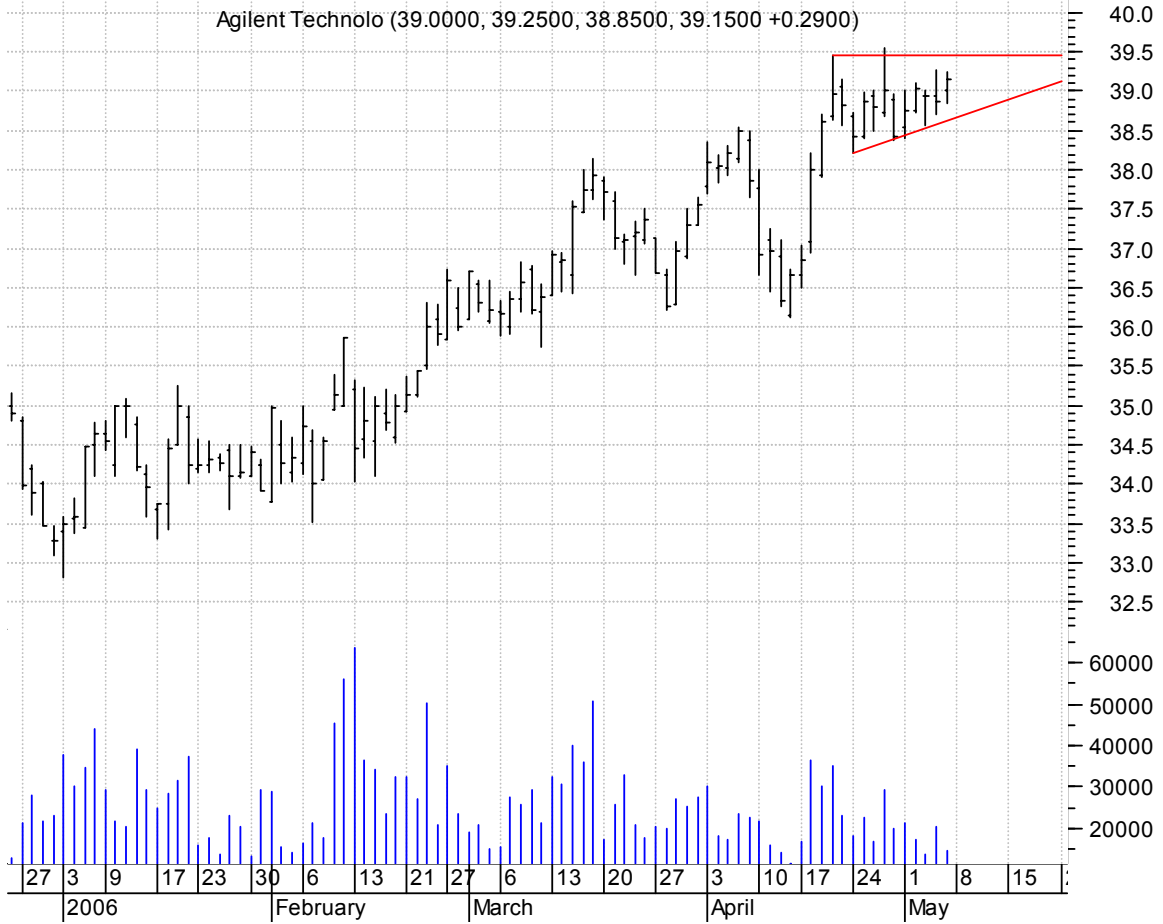


A sloppy asc. tri. / buy on upside brkout on increased volume



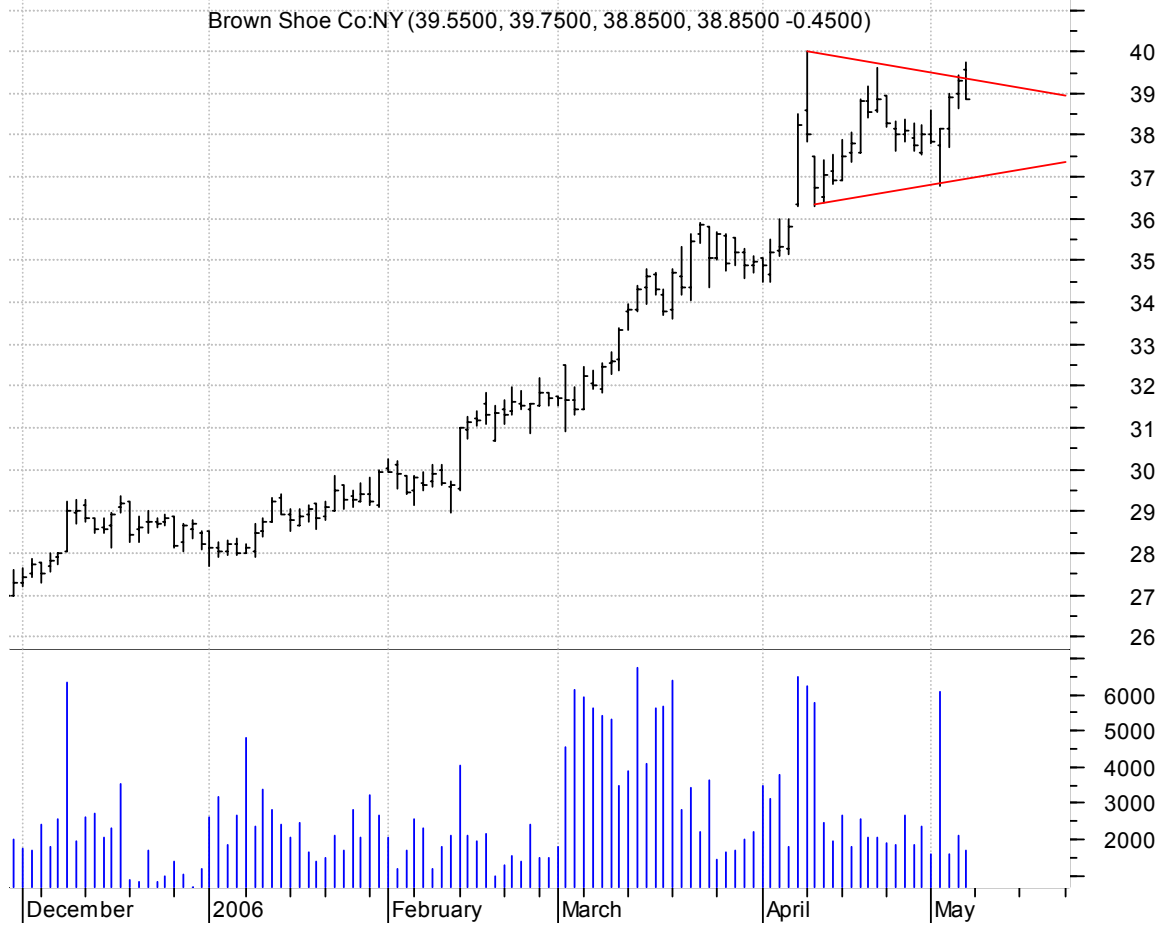
AHC symm. tri. / buy on upside brkout on increased volume



AUDC falling wedge preceded by 'pole-like' move / buy on upside brkout on increased volume

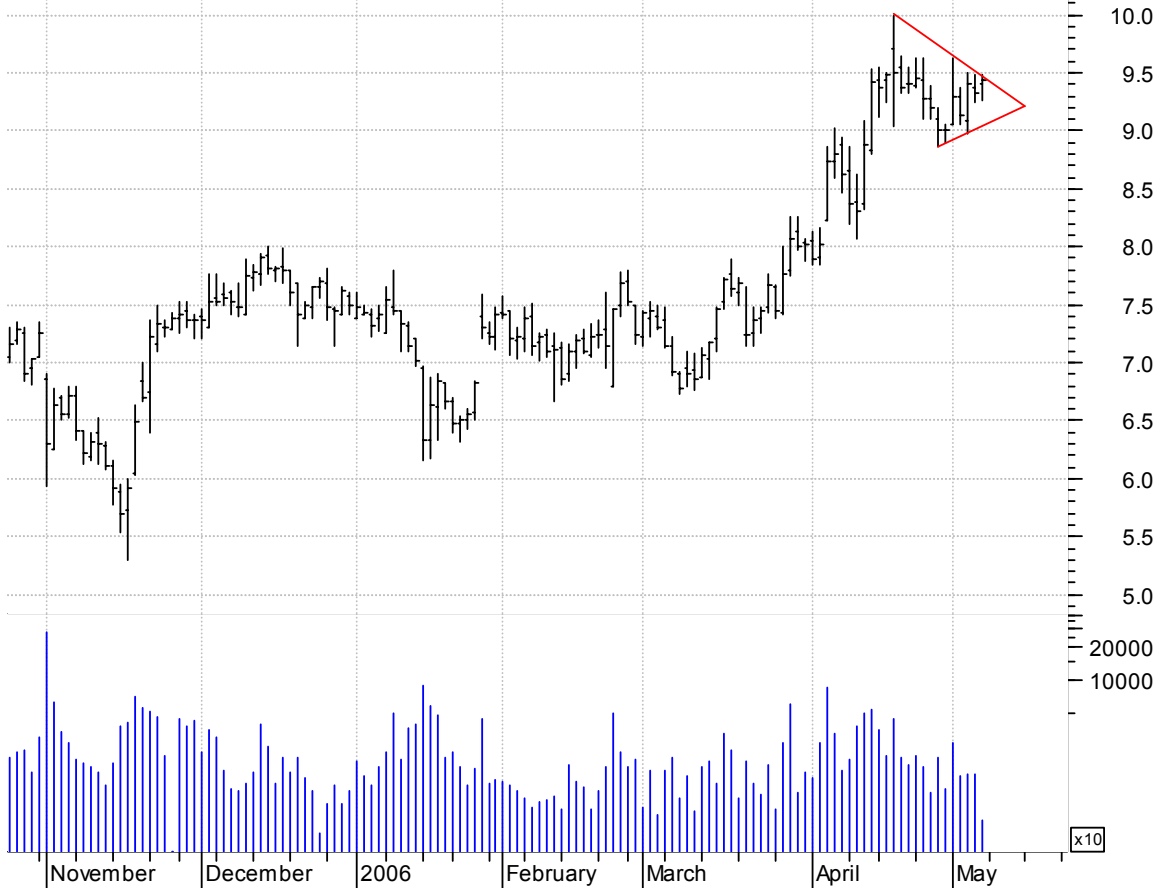


BWS symm. tri. / buy on upside brkout on increased volume



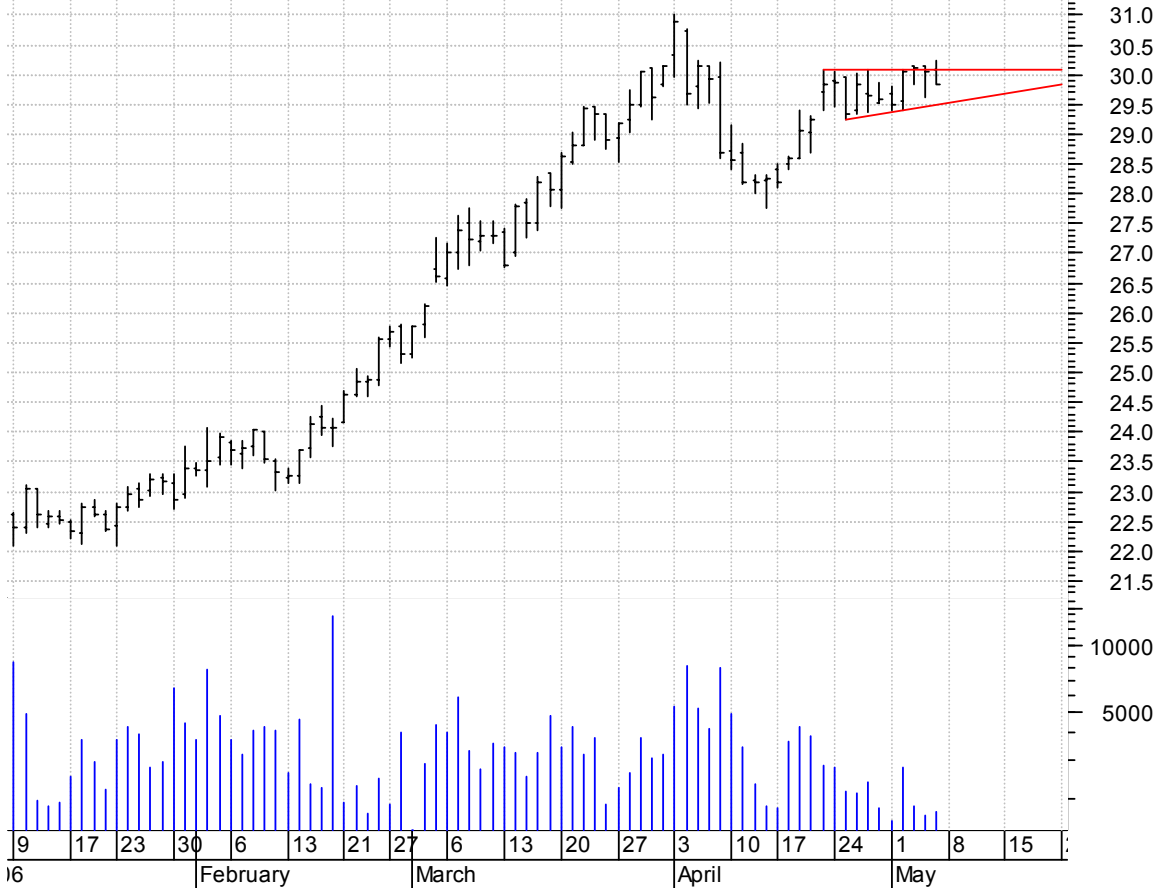
DCEL symm. tri. / buy on upside brkout on increased volume

Dobson Commun Cp (9.4000, 9.4800, 9.2600, 9.4300 +0.1100)



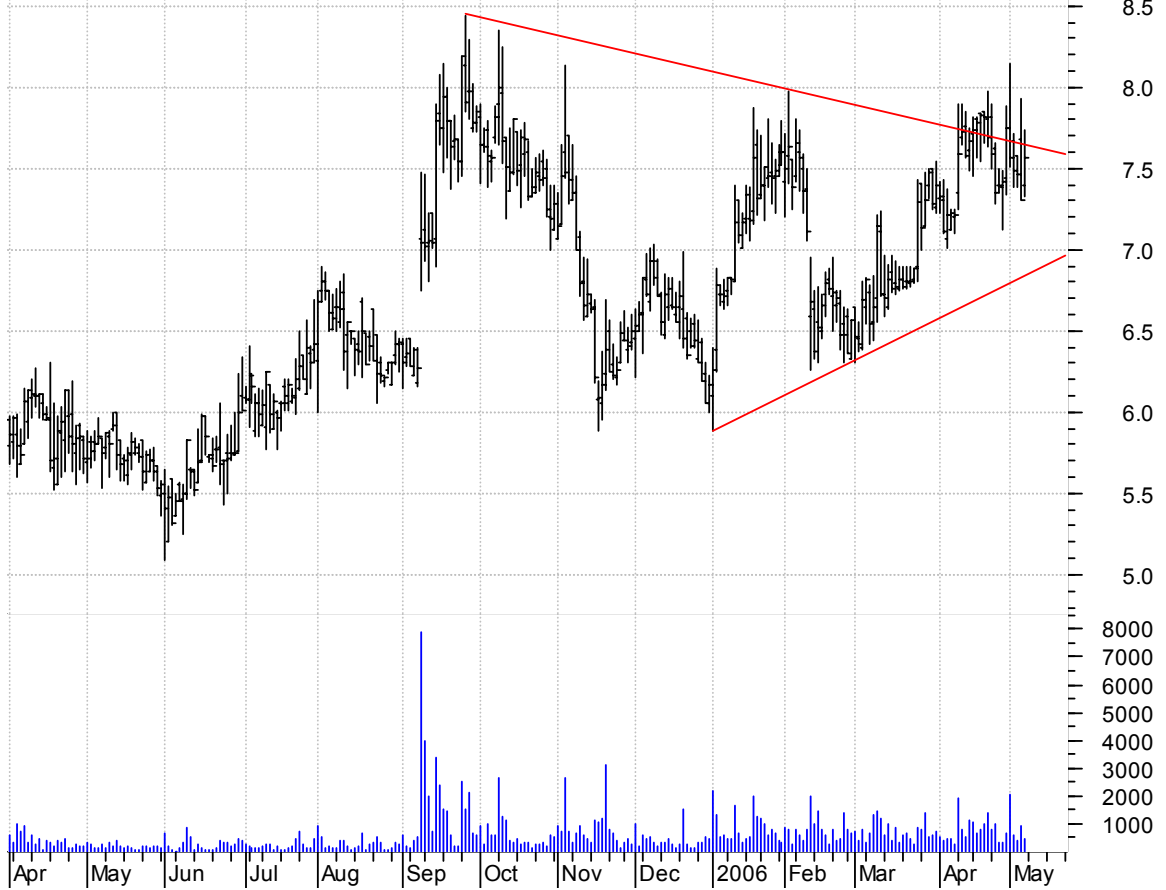
DLP asc. tri. / buy on upside brkout on increased volume

Delta & Pine Lan (30.0800, 30.2300, 29.8500, 29.8500 -0.1900)



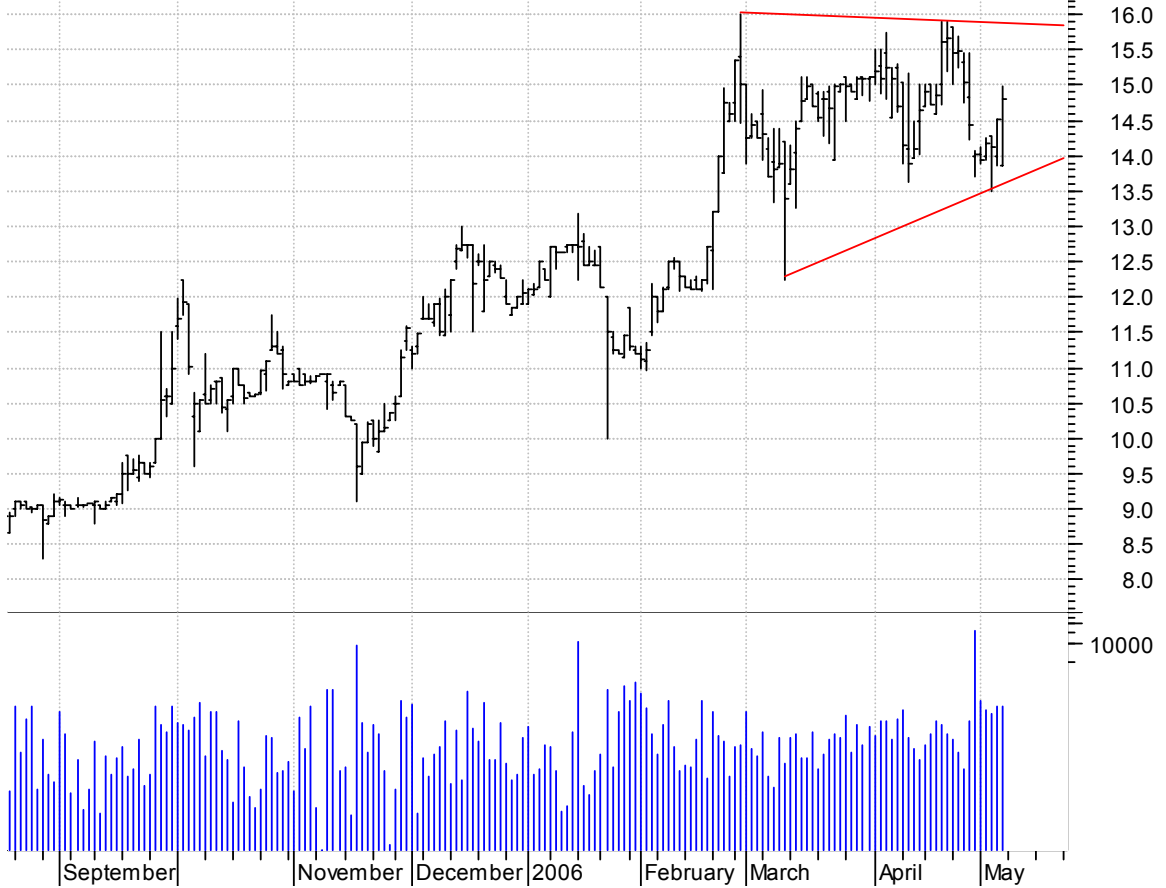
GCOM symm. tri. / buy on upside breakout on increased volume

Globecomm System (7.3900, 7.7400, 7.3300, 7.5600 +0.2500)



GPOR asc. tri. / buy on upside breakout on increased volume

Gulfport Energy: (13.8700, 14.9900, 13.8700, 14.8000 +0.2900)



HITT bull pennant / buy on upside brkout on increased volume

HITTITE MICROWAV (38.3600, 38.5400, 37.6200, 38.0300 -0.4000)



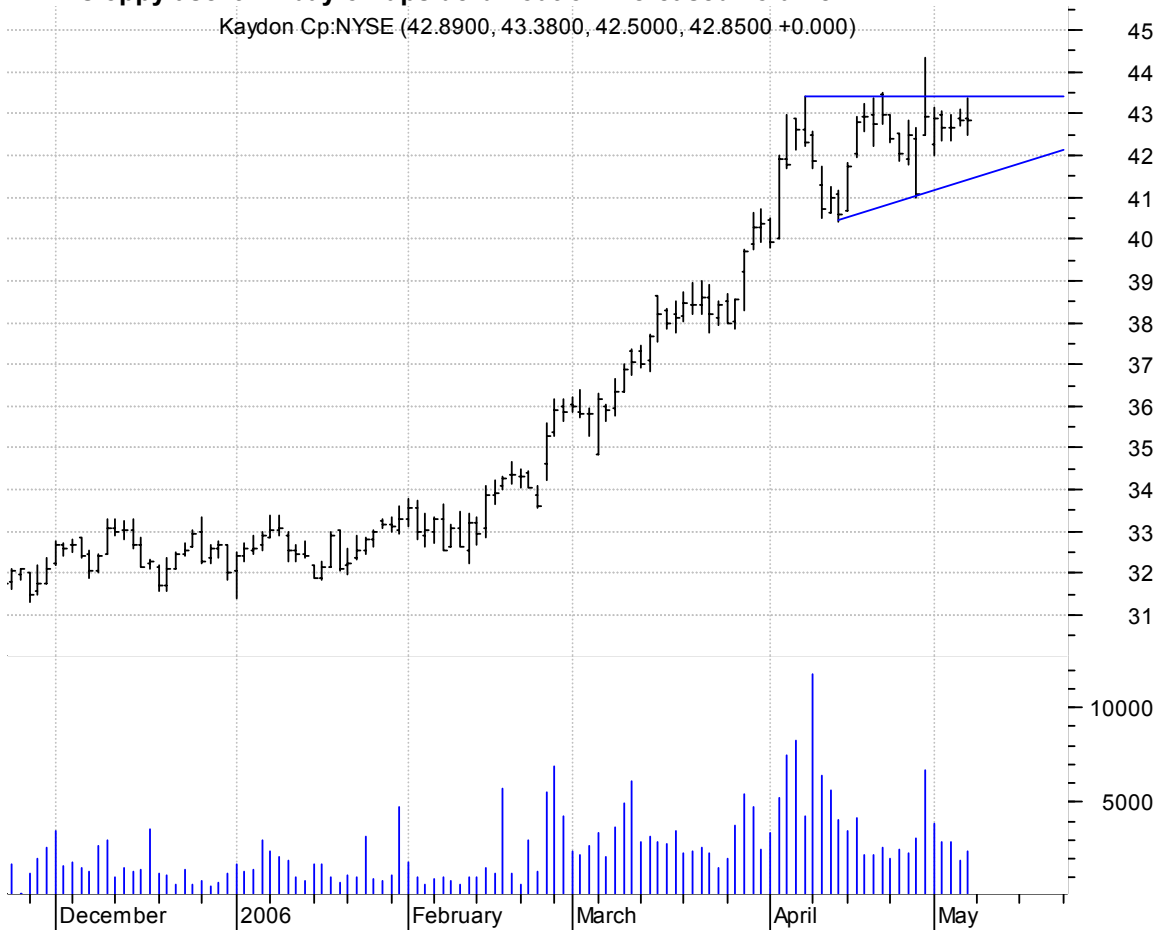
HPQ asc. tri. / buy on upside brkout on increased volume

Hewlett-Packard (33.4700, 33.9000, 33.2100, 33.8700 +0.5800)



KDN sloppy asc. tri. / buy on upside brkout on increased volume

Kaydon Cp:NYSE (42.8900, 43.3800, 42.5000, 42.8500 +0.000)



MAN rectangle preceded by 'pole-like' move / buy on upside brkout on increased volume

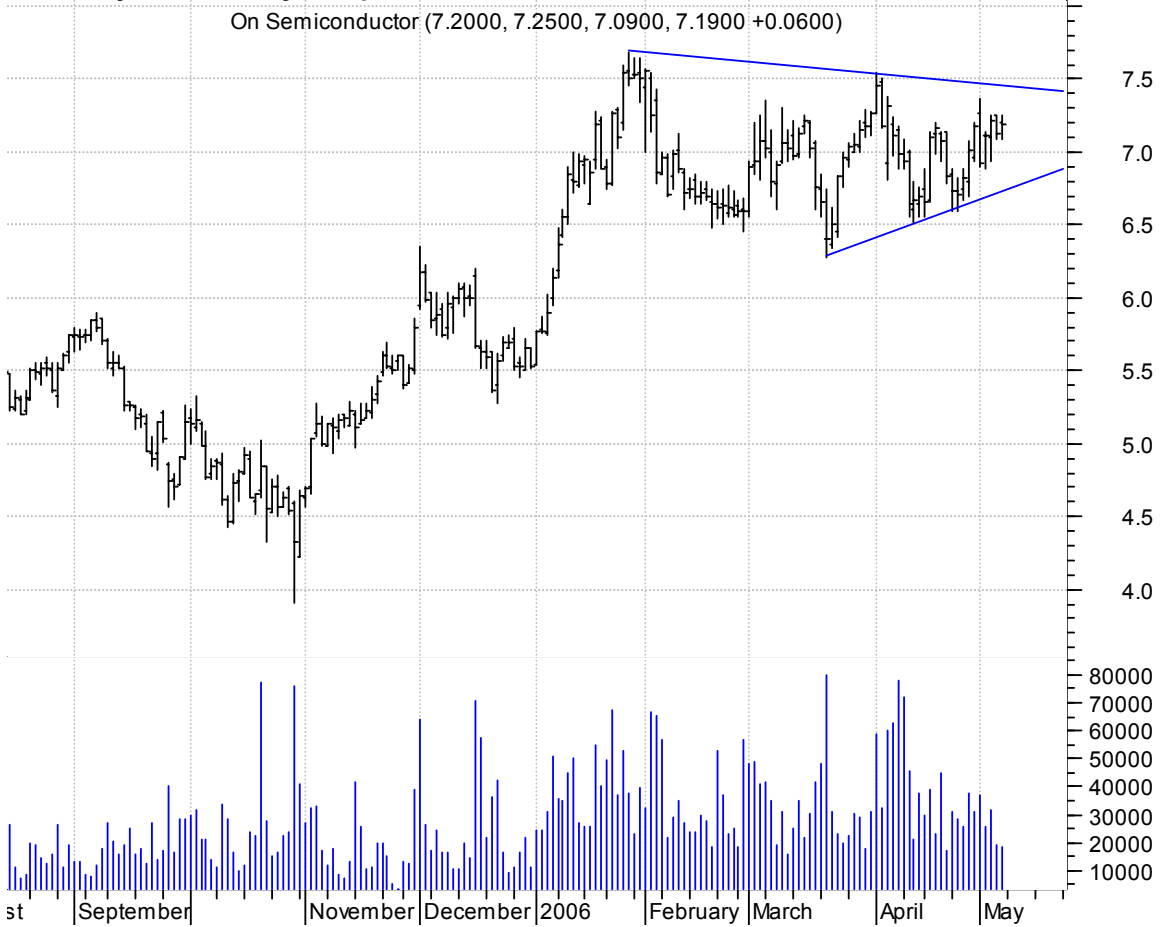
Manpower Inc:NYSE (66.2500, 66.4100, 65.8000, 66.0000 -0.0300)



NTRI bull flag / buy on upside brkout on increased volume

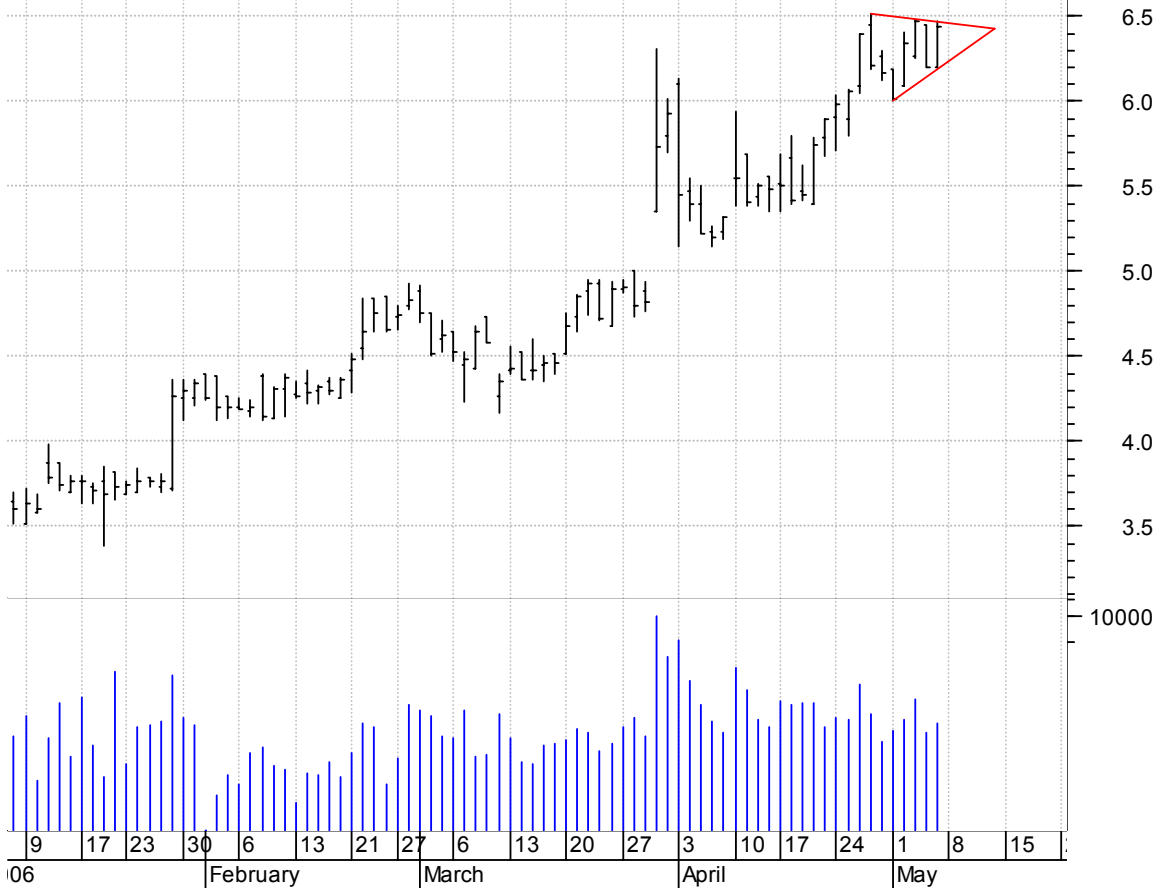


ONNN symm. tri. / buy on upside brkout on increased volume



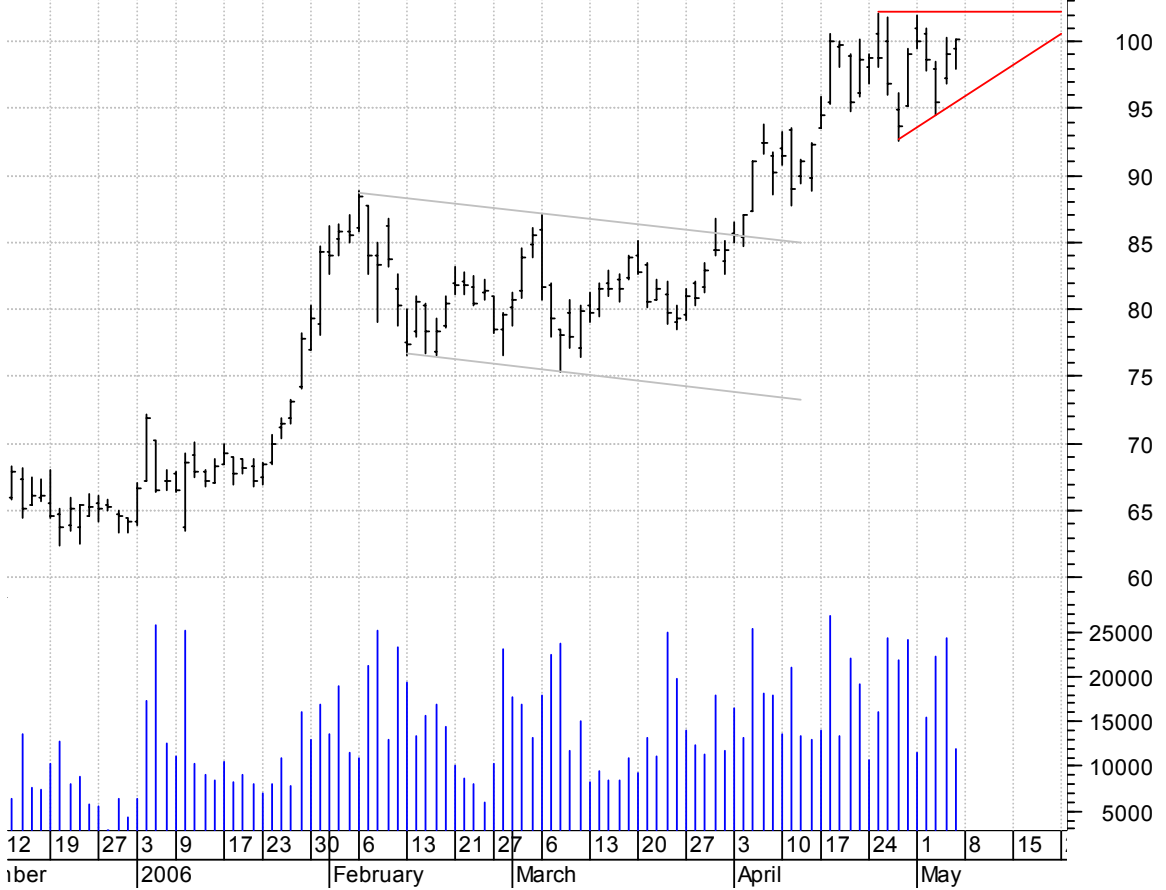
PCOP symm. tri. / buy on upside breakout on increased volume

PHARMA COPEIA DRU (6.2000, 6.4700, 6.2000, 6.4400 +0.2400)



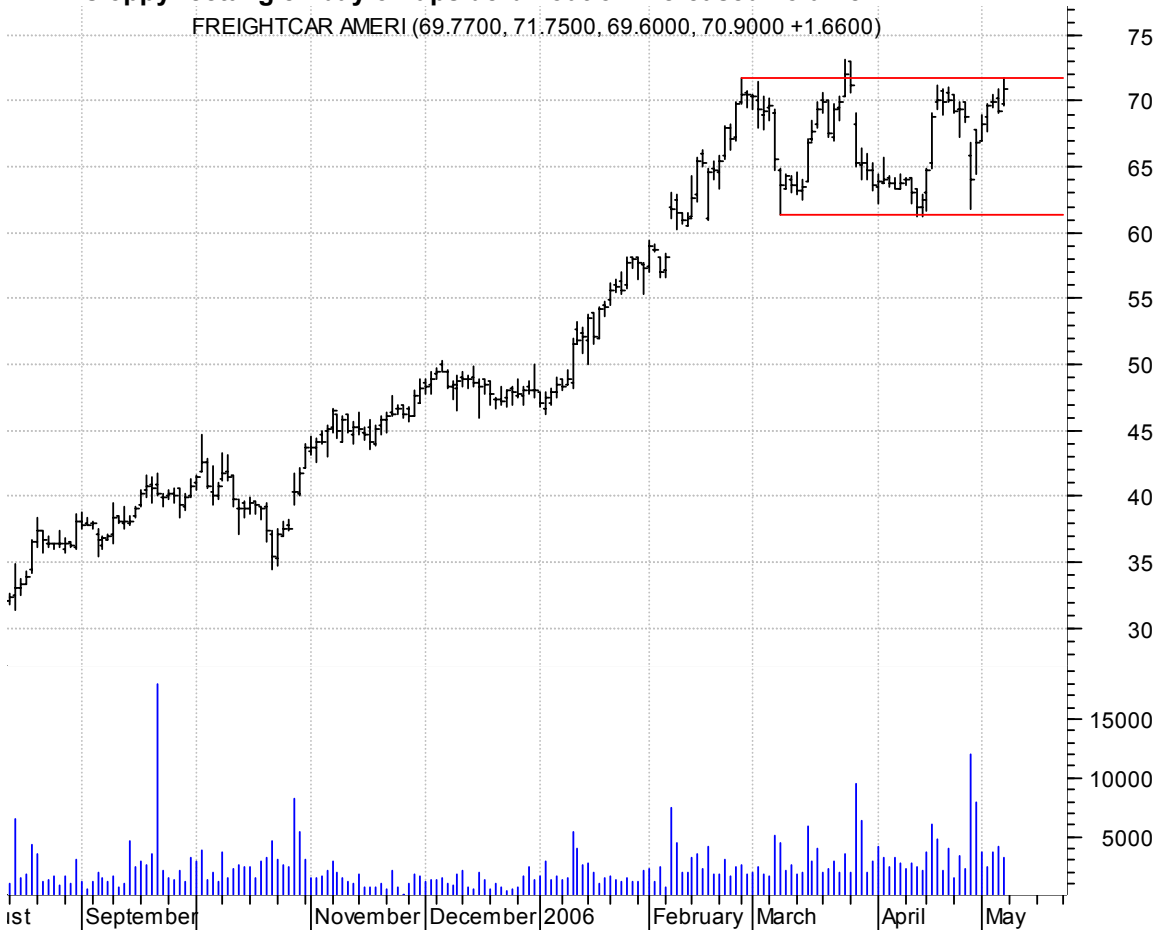
PCU asc. tri. / buy on upside breakout on increased volume

Southern Copper (99.5000, 100.160, 98.0000, 100.100 +1.0500)



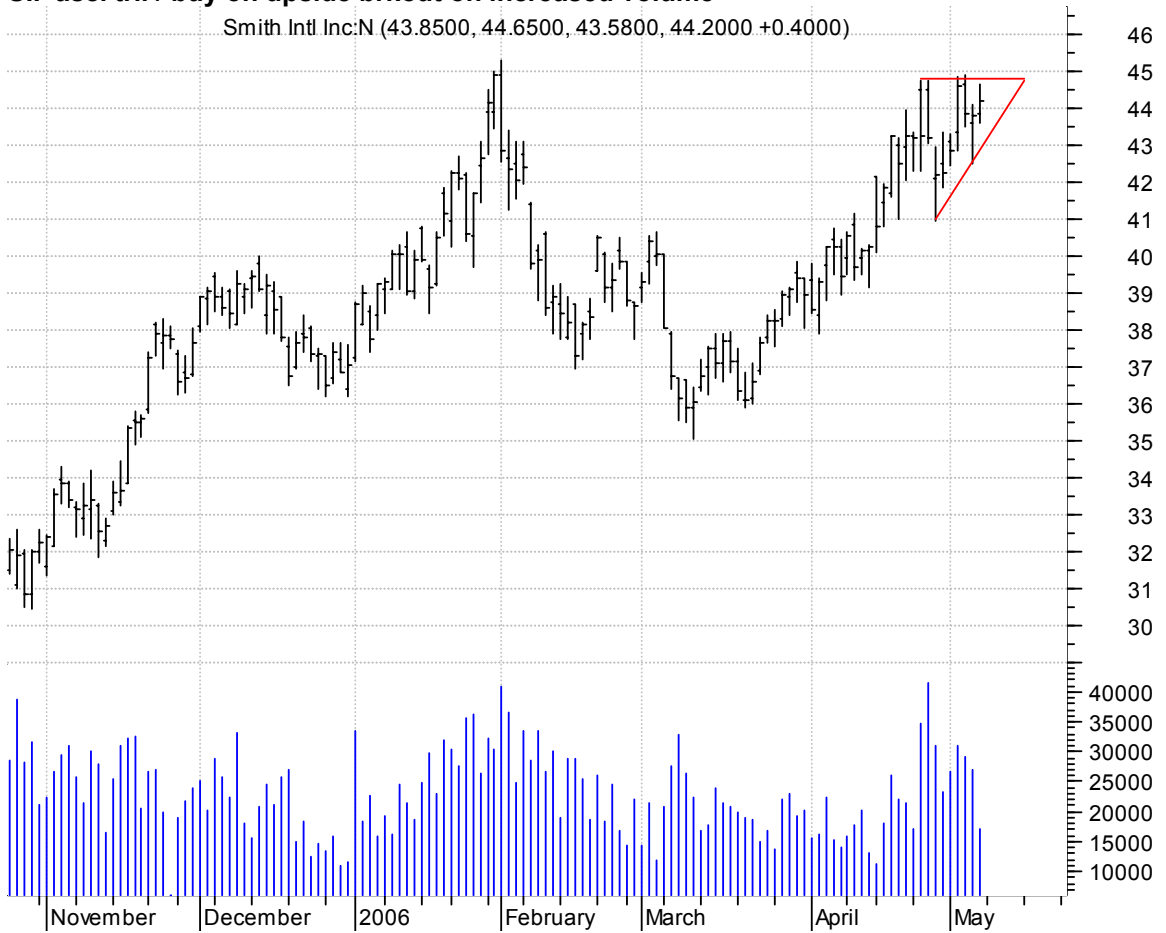
RAIL sloppy rectangle / buy on upside breakout on increased volume

FREIGHTCAR AMERI (69.7700, 71.7500, 69.6000, 70.9000 +1.6600)



SII asc. tri. / buy on upside breakout on increased volume

Smith Intl Inc:N (43.8500, 44.6500, 43.5800, 44.2000 +0.4000)



SLW sloppy asc. tri. / buy on upside brkout on increased volume

Silver Wheaton:A (10.6600, 10.8800, 10.5300, 10.7100 +0.0100)



SWIR bull pennant / buy on upside brkout on increased volume

Sierra Wireless (18.9900, 19.0200, 18.6200, 18.9600 +0.1400)



TGA falling wedge / buy on upside breakout on increased volume

Transglobal Ener (5.9500, 6.0200, 5.8100, 5.8200 -0.0300)

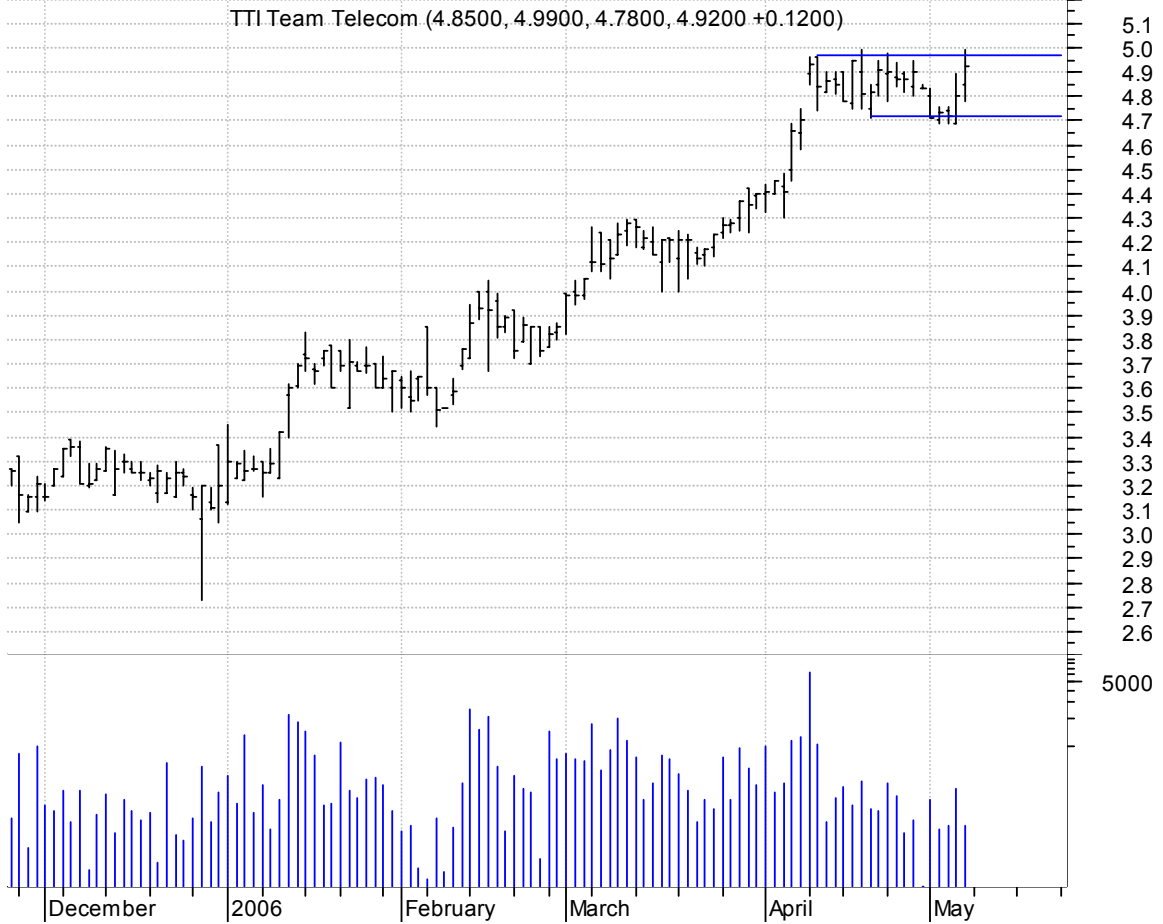


TIN asc. tri. / buy on upside breakout on increased volume

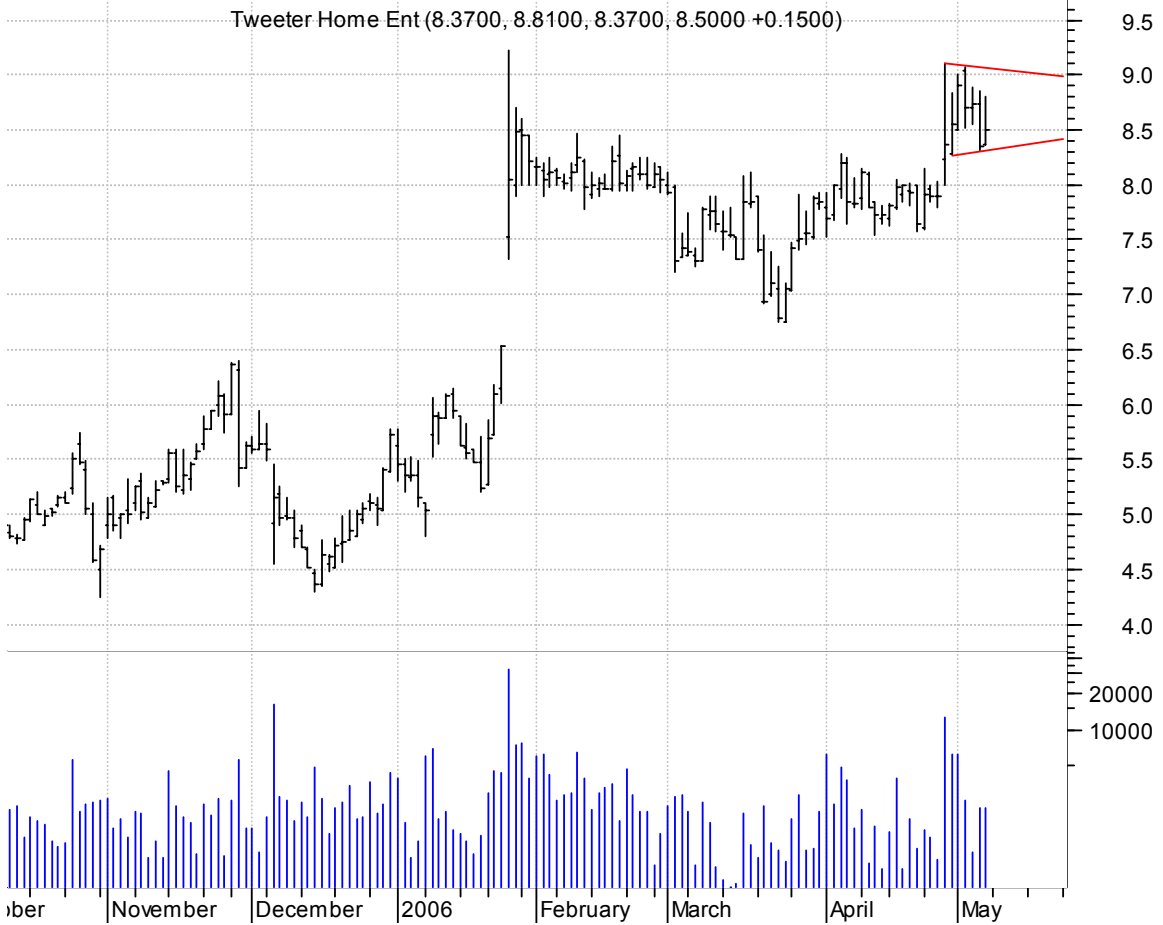
Temple-Inland In (46.9700, 47.4500, 46.9100, 47.1500 +0.4300)



TTIL rectangle / buy on upside breakout on increased volume



TWTR symm. tri. / buy on upside breakout on increased volume



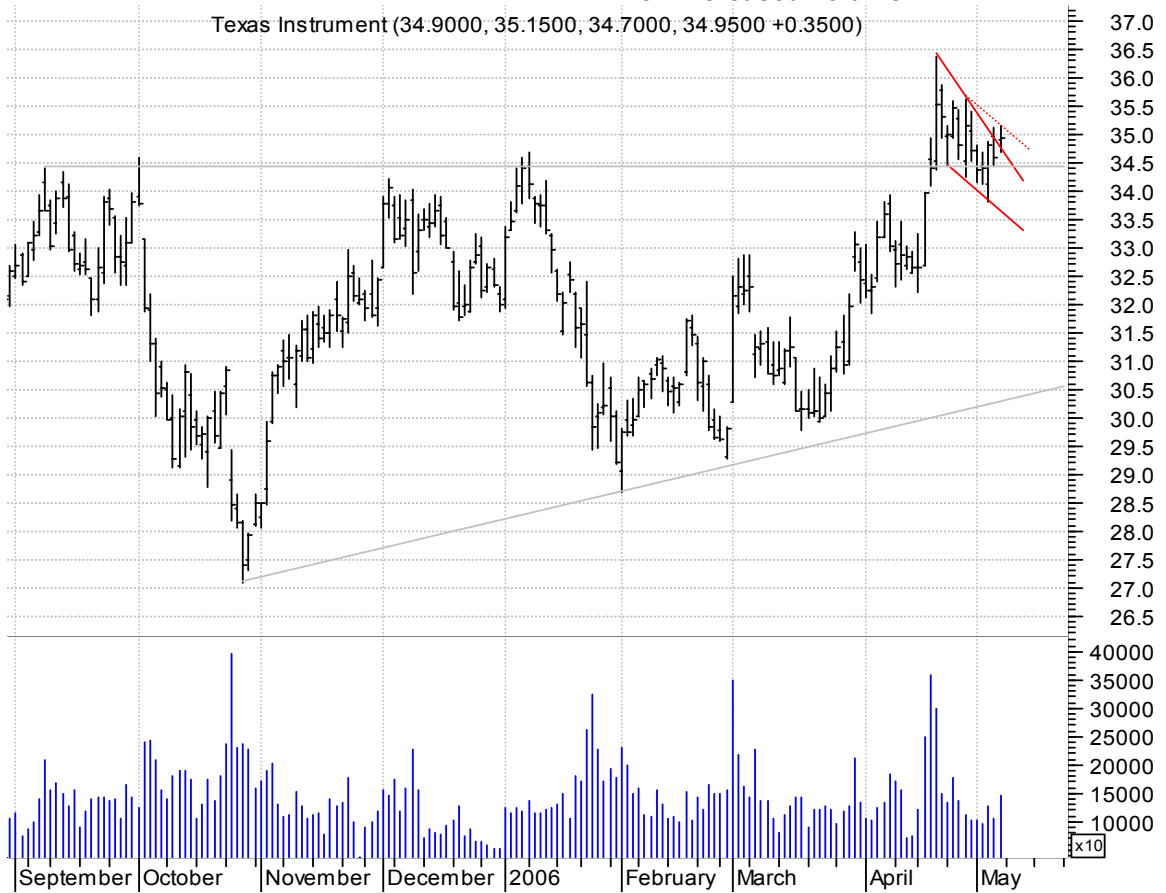
TXCO symm. tri. / buy on upside brkout on increased volume

Exploration Co o (12.2400, 12.2600, 11.4300, 11.7400 -0.3300)



TXN falling wedge preceded by 'pole-like' move / buy on upside brkout thru dotted red line on increased volume

Texas Instrument (34.9000, 35.1500, 34.7000, 34.9500 +0.3500)



WLSC sloppy asc. tri. / buy on upside brkout on increased volume



WTNY symm. tri. / buy on upside brkout thru dotted red line on increased volume



chartpatterns.com
Chart Pattern Analysis for Timing the Markets

KMatras@aol.com