

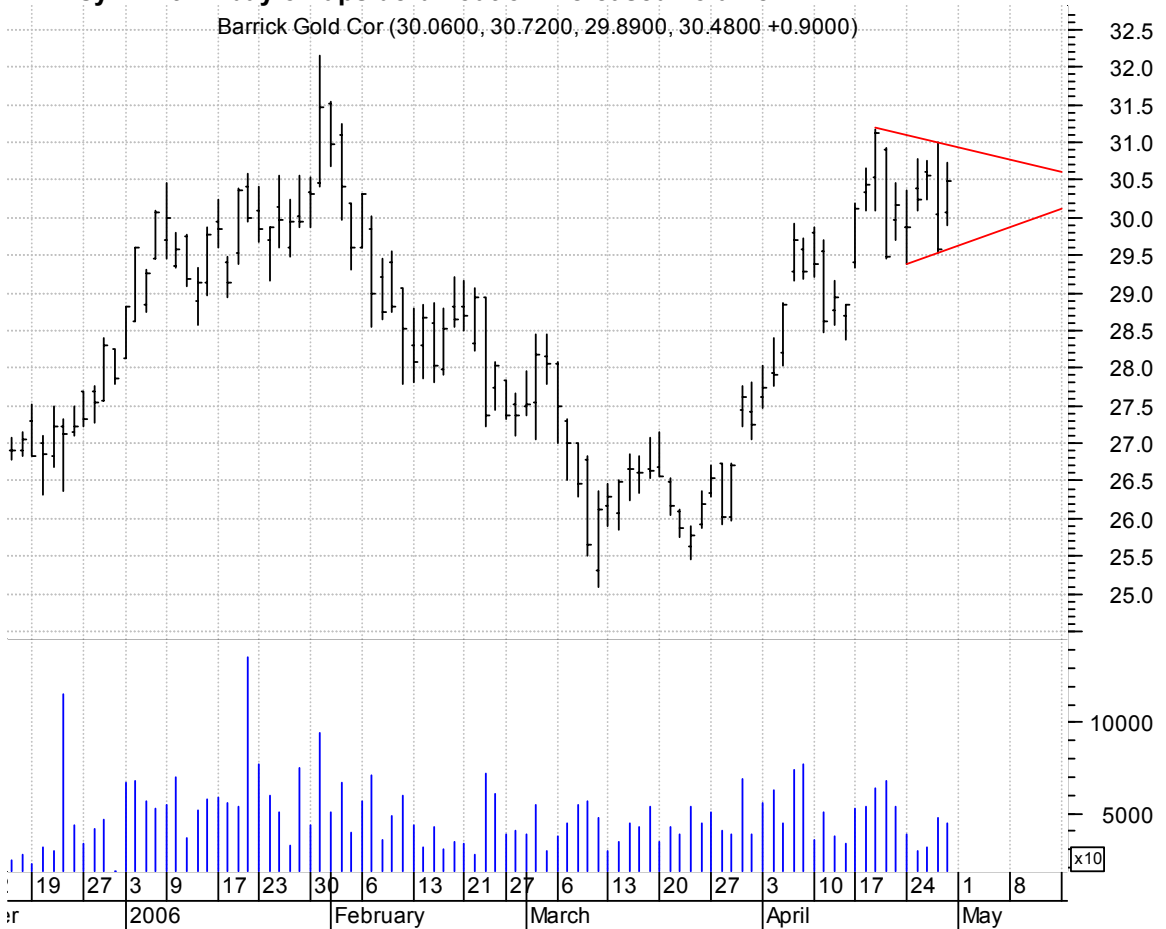
ABCO sloppy asc. tri. / buy on upside brkout on increased volume

ADVISORY BOARD C (55.2800, 56.2000, 54.7600, 56.1200 +0.8000)



ABX symm. tri. / buy on upside brkout on increased volume

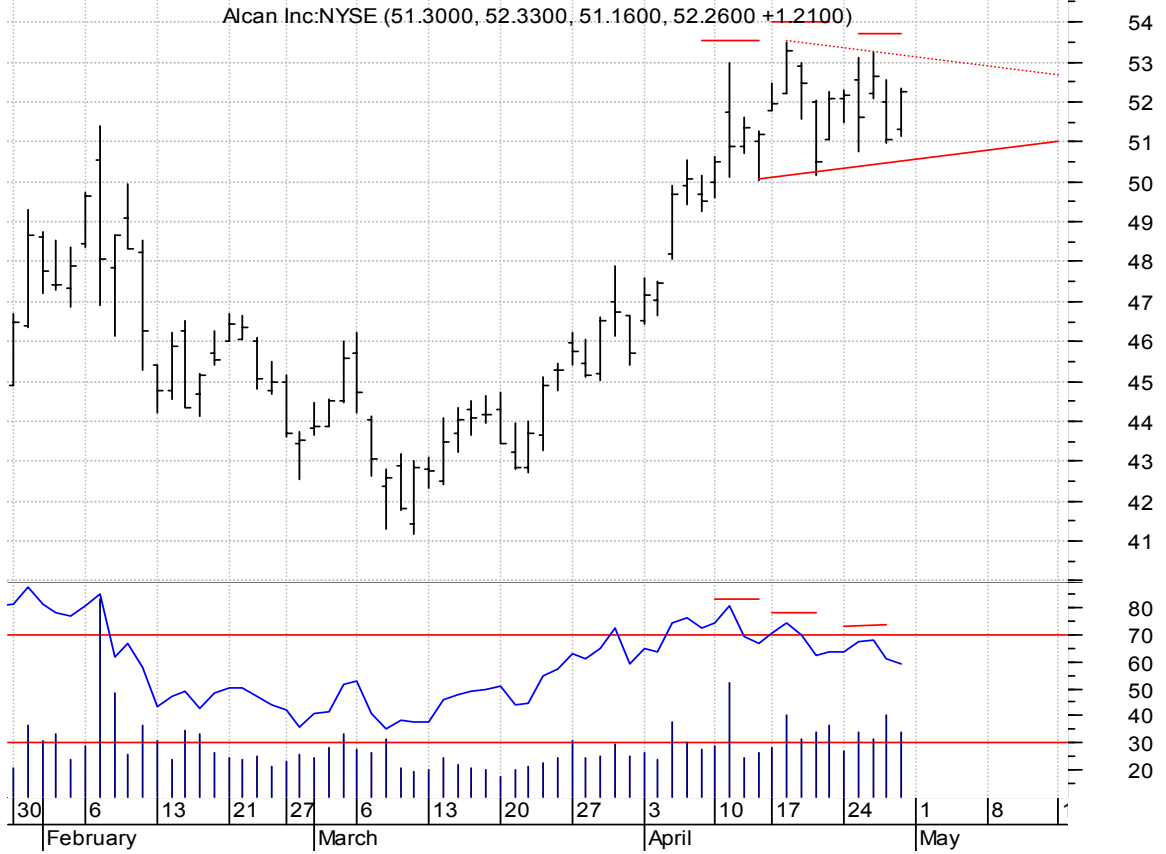
Barrick Gold Cor (30.0600, 30.7200, 29.8900, 30.4800 +0.9000)



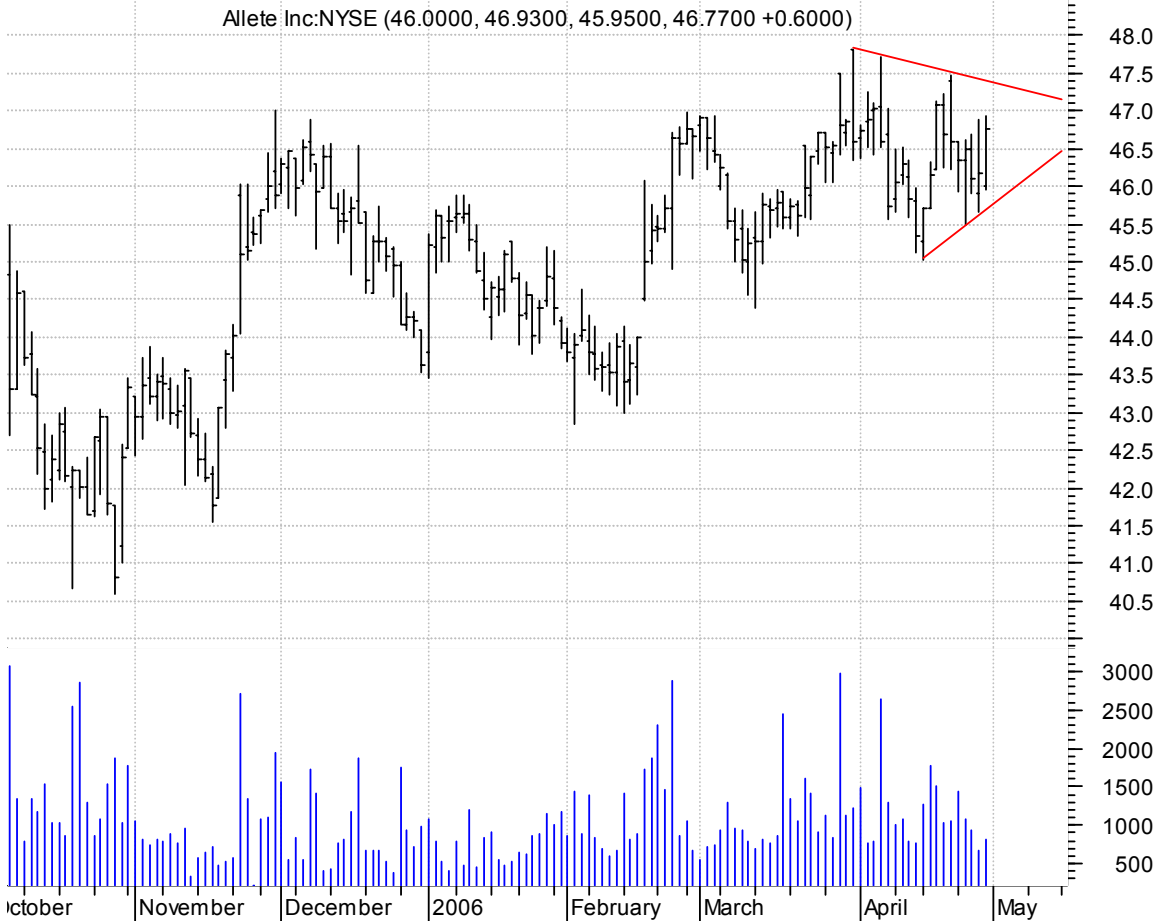
AL h. & sh. / 1) sell on downside brkout on increased volume or

2) buy on upside brkout on increased volume

[h. & sh. reversal pattern failure often times brkout sharply to the upside]



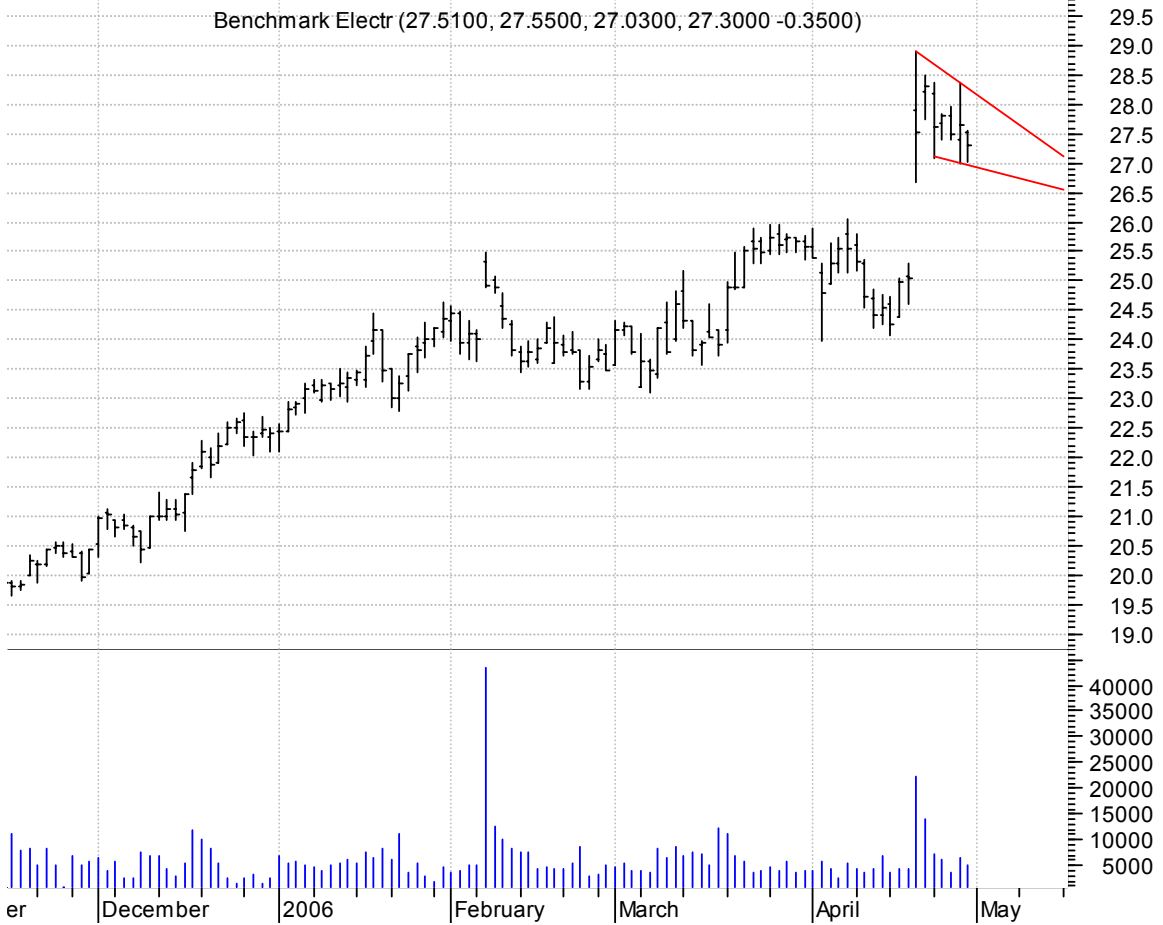
ALE symm. tri. / buy on upside brkout on increased volume



ARP symm. tri. / buy on upside breakout on increased volume



BHE falling wedge preceded by 'pole-like' move / buy on upside breakout on increased volume



BWS symm. tri. / buy on upside brkout on increased volume

Brown Shoe Co:NY (37.6000, 38.2500, 37.5500, 38.0300 +0.2800)



CMC symm. tri. / buy on upside brkout on increased volume

Commercial Metal (52.4100, 54.6200, 52.4100, 54.4000 +2.3600)



CRNT asc. tri. / buy on upside breakout on increased volume

Ceragon Networks (5.2500, 5.4000, 5.0900, 5.3900 +0.1400)



FCS bull pennant / buy on upside breakout on increased volume

Fairchild Semico (20.5600, 20.8500, 20.3200, 20.6700 +0.1100)



GEHL sloppy bull flag / buy on upside brkout on increased volume

Gehl Co:OTC (37.6100, 38.9400, 35.2800, 35.8800 -4.4000)



HLT symm. tri. brkout (& retracement) preceded by 'pole-like' move / buy on upside brkout thru dotted red line on increased volume

Hilton Hotels Co (27.0500, 27.2800, 26.7900, 26.9400 -0.0500)



IVAC symm. tri. / buy on upside brkout on increased volume



JLL asc. tri. (better seen on an intraday chart) / buy on upside brkout on increased volume



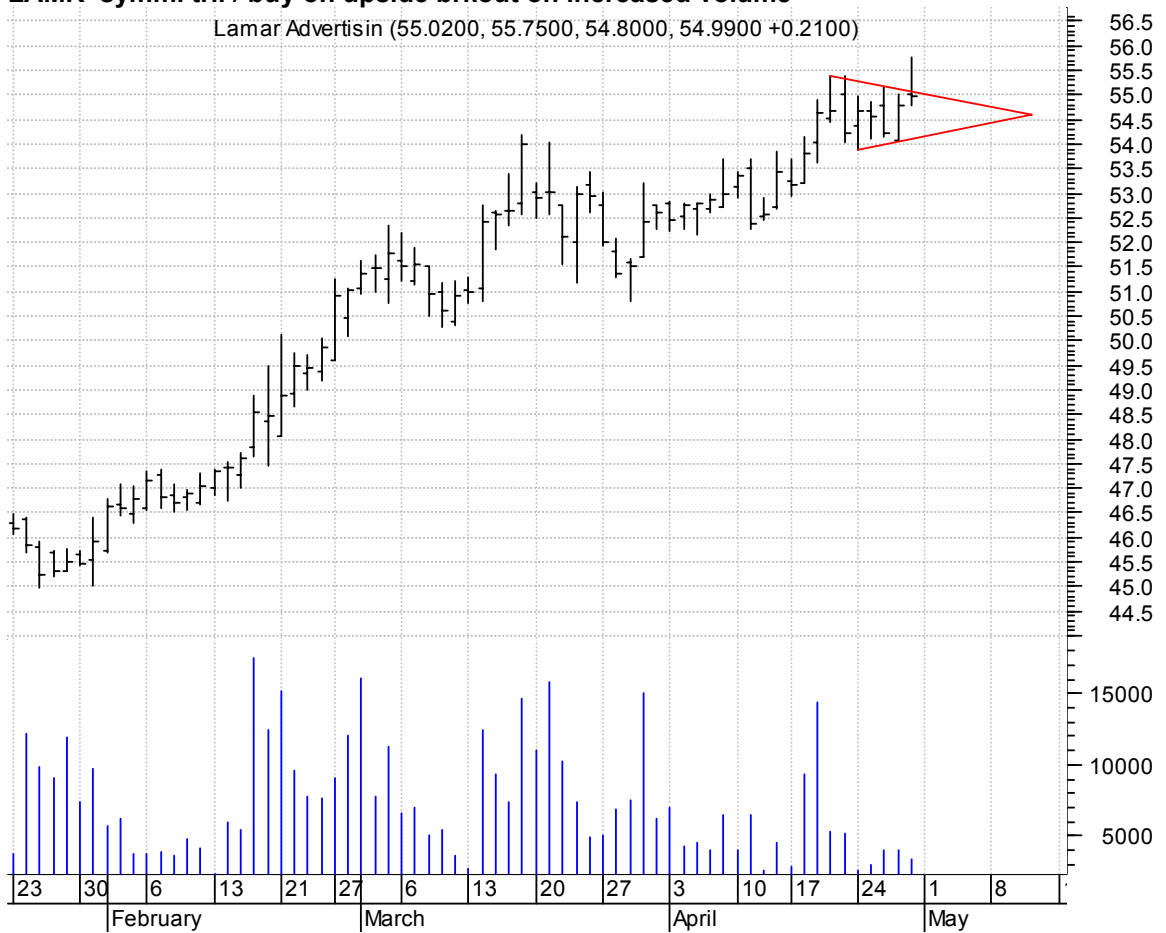
KDN asc. tri. / buy on upside breakout on larger than normal volume

Kaydon Cp.:NYSE (42.5000, 44.3300, 42.5000, 42.9400 +1.8800)



LAMR symm. tri. / buy on upside breakout on increased volume

Lamar Advertisin (55.0200, 55.7500, 54.8000, 54.9900 +0.2100)



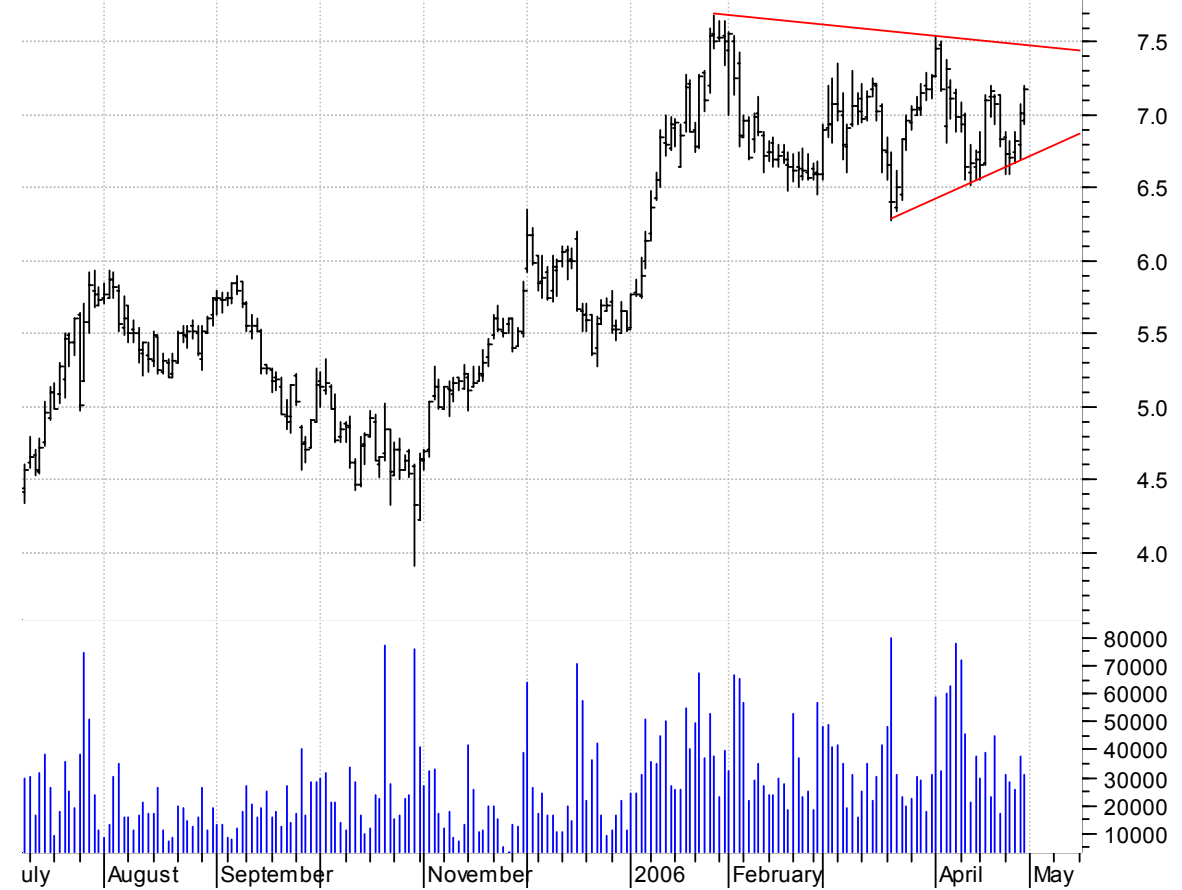
MSM symm. tri. preceded by 'pole-like' move / buy on upside breakout on increased volume

MSC Industrial D (51.4000, 52.1900, 51.4000, 51.8600 -0.4400)



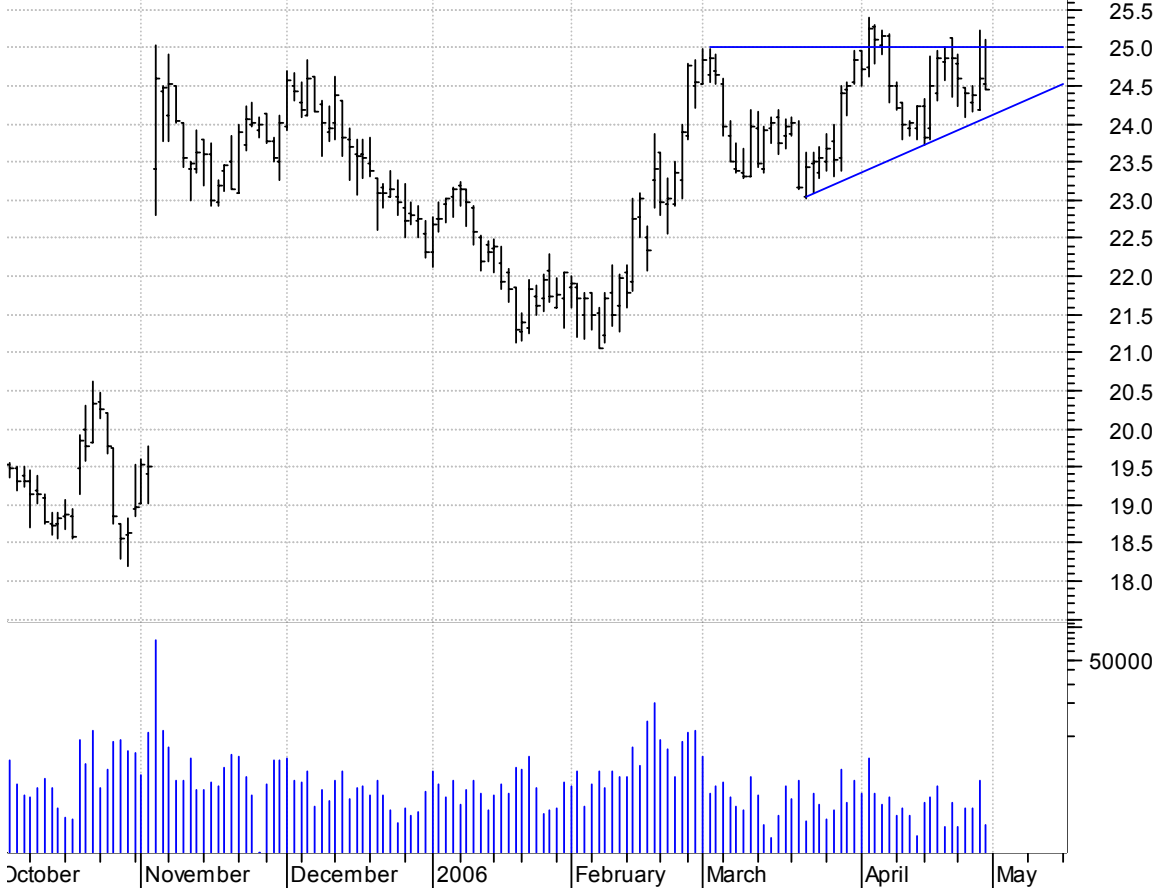
ONNN symm. tri. / buy on upside breakout on increased volume

On Semiconductor (6.9600, 7.2000, 6.9300, 7.1700 +0.1600)



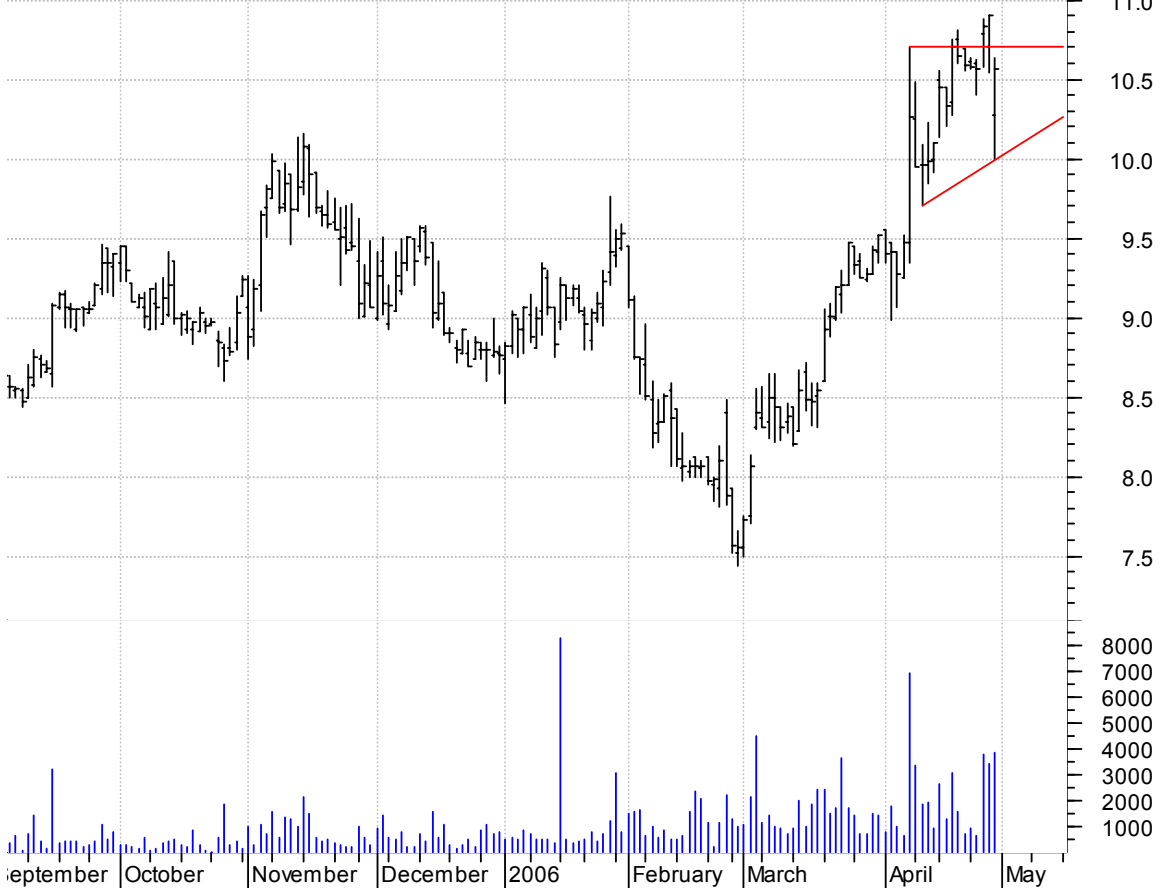
PCLN sloppy asc. tri. / buy on upside brkout on increased volume

Priceline.com nc (24.5100, 25.1000, 24.4400, 24.4400 -0.1600)

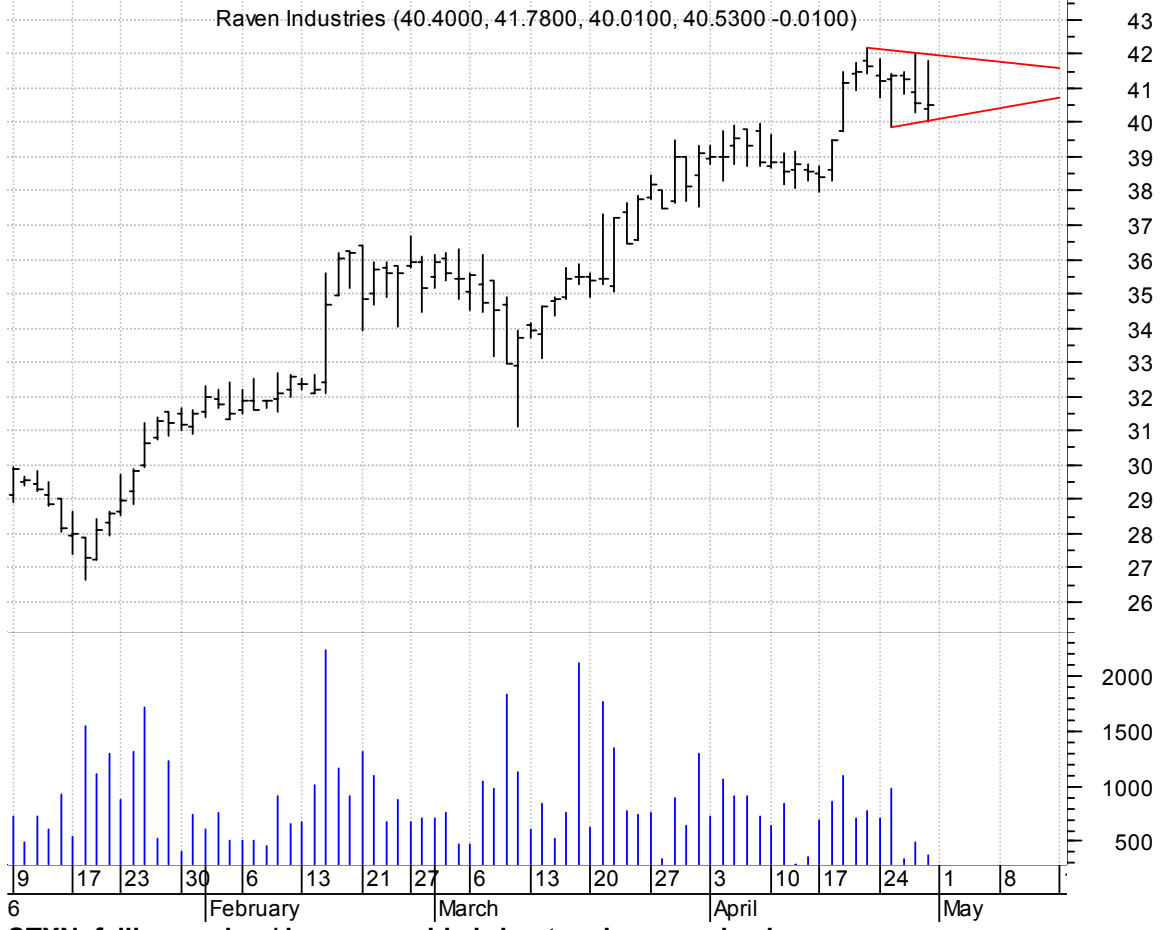


PCTI sloppy asc. tri. preceded by 'pole-like' move / buy on upside brkout on larger than normal volume

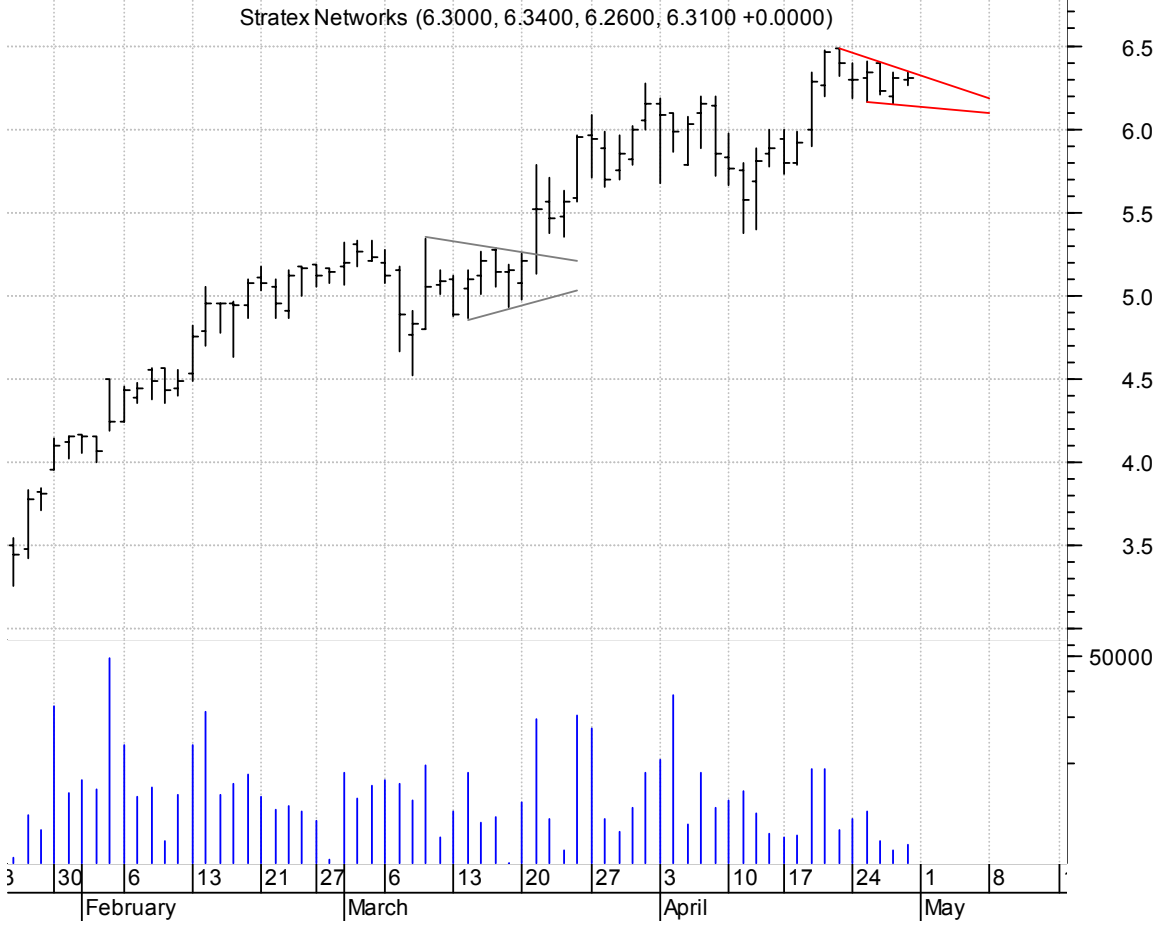
PC-Tel Inc:OTC (10.2800, 10.6400, 9.9900, 10.5600 -0.3400)



RAVN symm. tri. / buy on upside breakout on increased volume

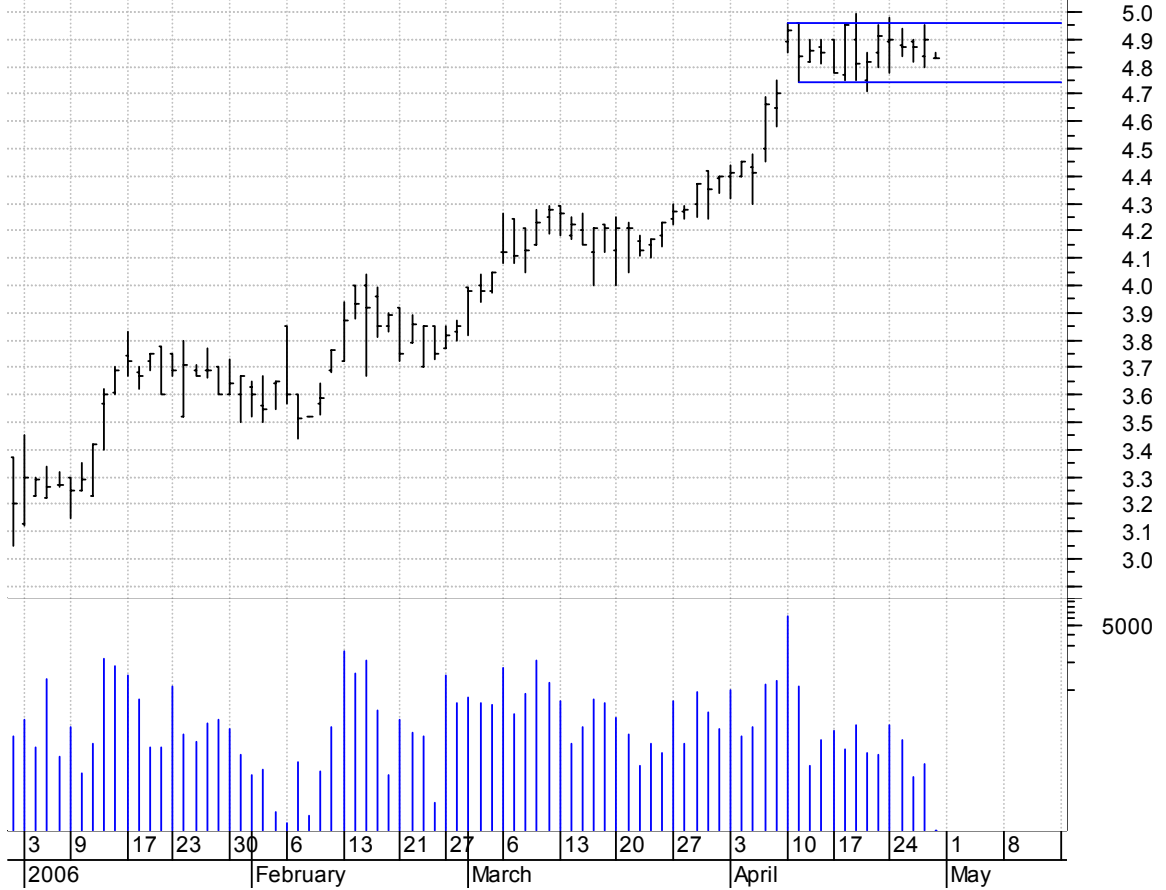


STXN falling wedge / buy on upside breakout on increased volume



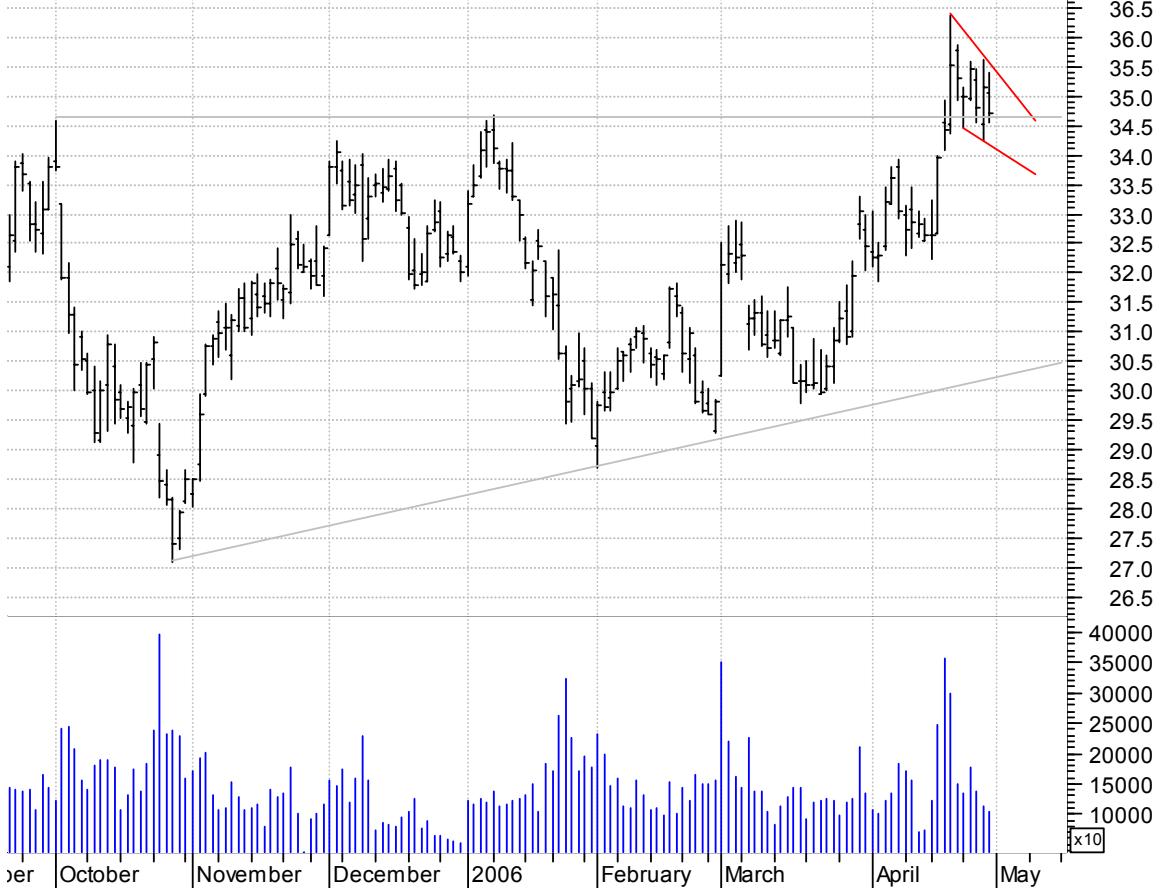
TTIL rectangle / buy on upside breakout on increased volume

TTI Team Telecom (4.8300, 4.8500, 4.8300, 4.8300 -0.0700)



TXN falling wedge preceded by 'pole-like' move / buy on upside breakout on increased volume

Texas Instrument (35.0700, 35.3900, 34.5400, 34.7100 -0.4300)



VOL symm. tri. / buy on upside brkout on increased volume



chartpatterns.com
Chart Pattern Analysis for Timing the Markets

KMatras@aol.com