

**AB symm. tri. brkout / buy and use bottom of pattern (asc. trendline) as failure point**

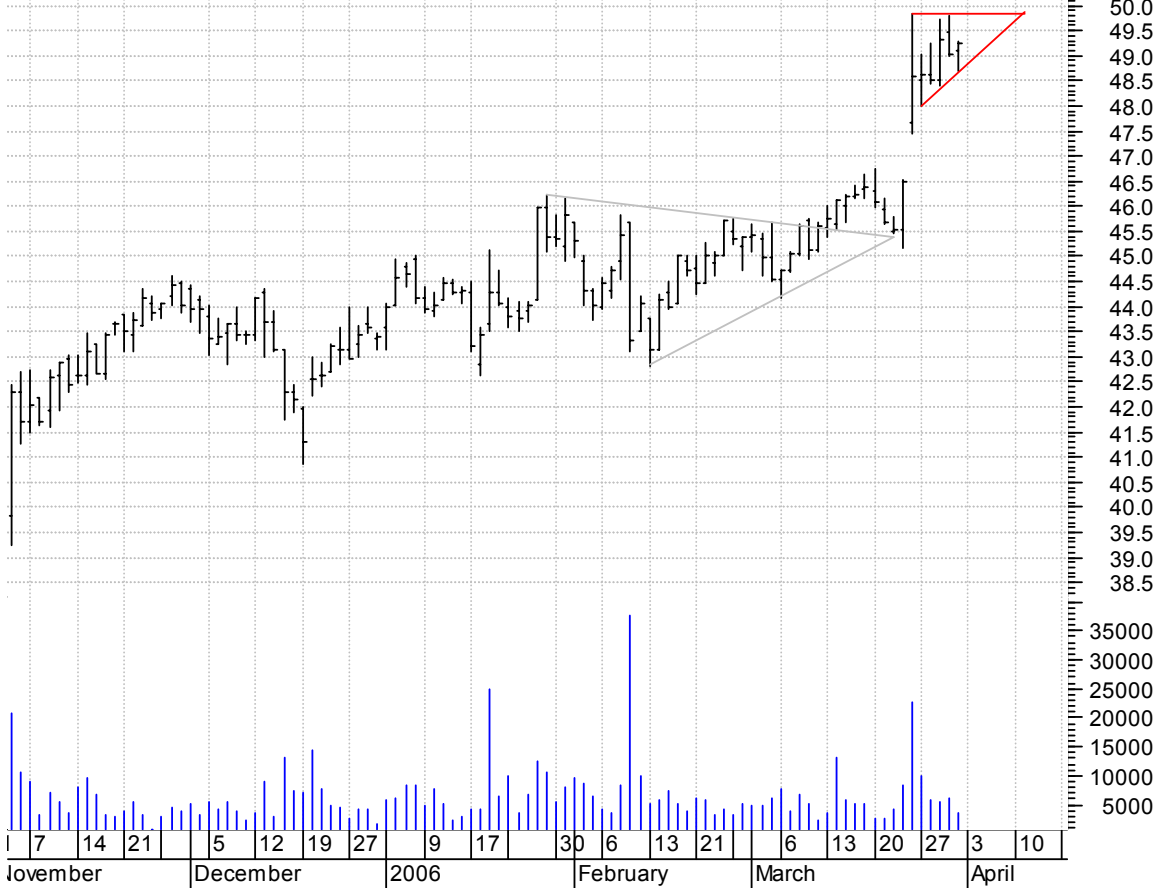


**ABCO bullish flag / buy on upside brkout thru dotted red line on increased volume**



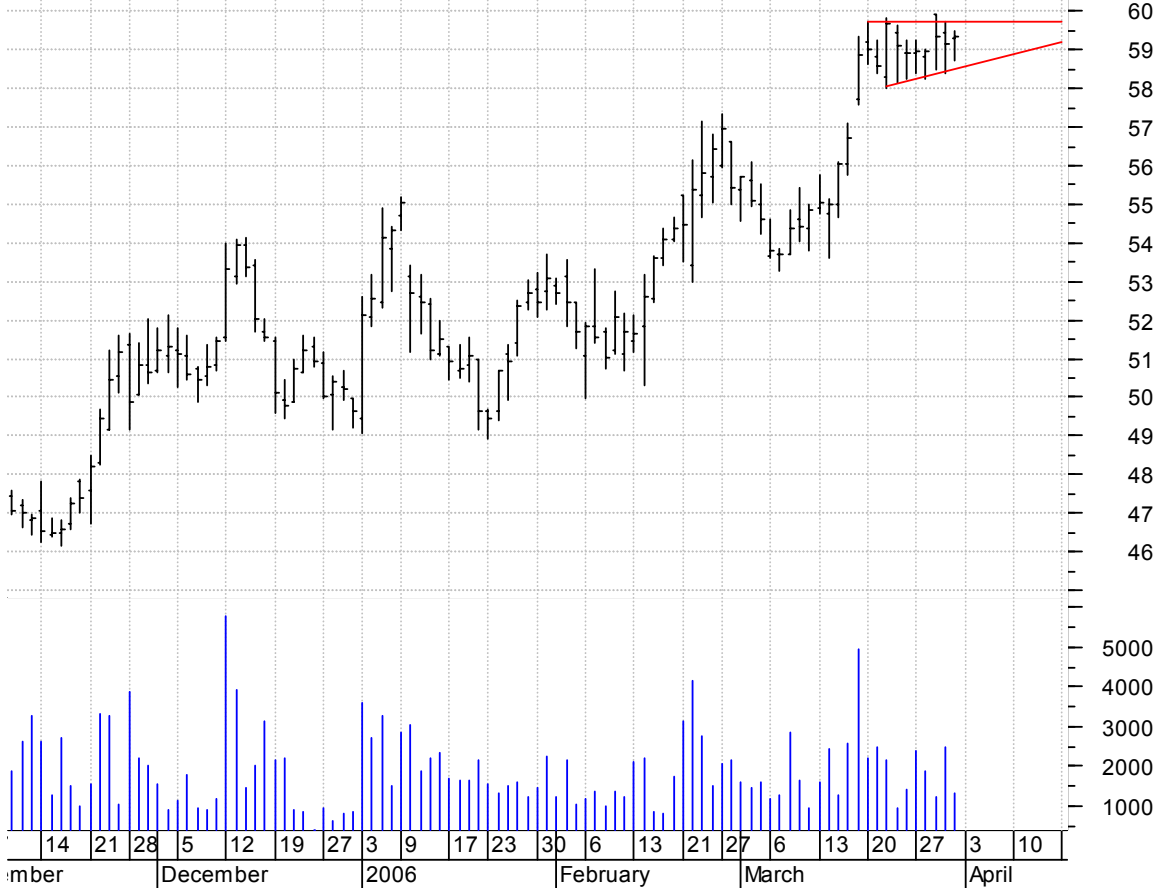
**AIZ asc. tri. preceded by 'pole-like' move / buy on upside brkout on increased volume**

ASSURANT INC.:NYS (49.1100, 49.3000, 48.7100, 49.2500 +0.2200)



**CHE asc. tri. preceded by 'pole-like' move / buy on upside brkout on increased volume**

Chemed:NYSE (59.2800, 59.5000, 58.7500, 59.3400 +0.1700)



**CHRS symm. tri. preceded by 'pole-like' move / buy on upside brkout on increased volume**

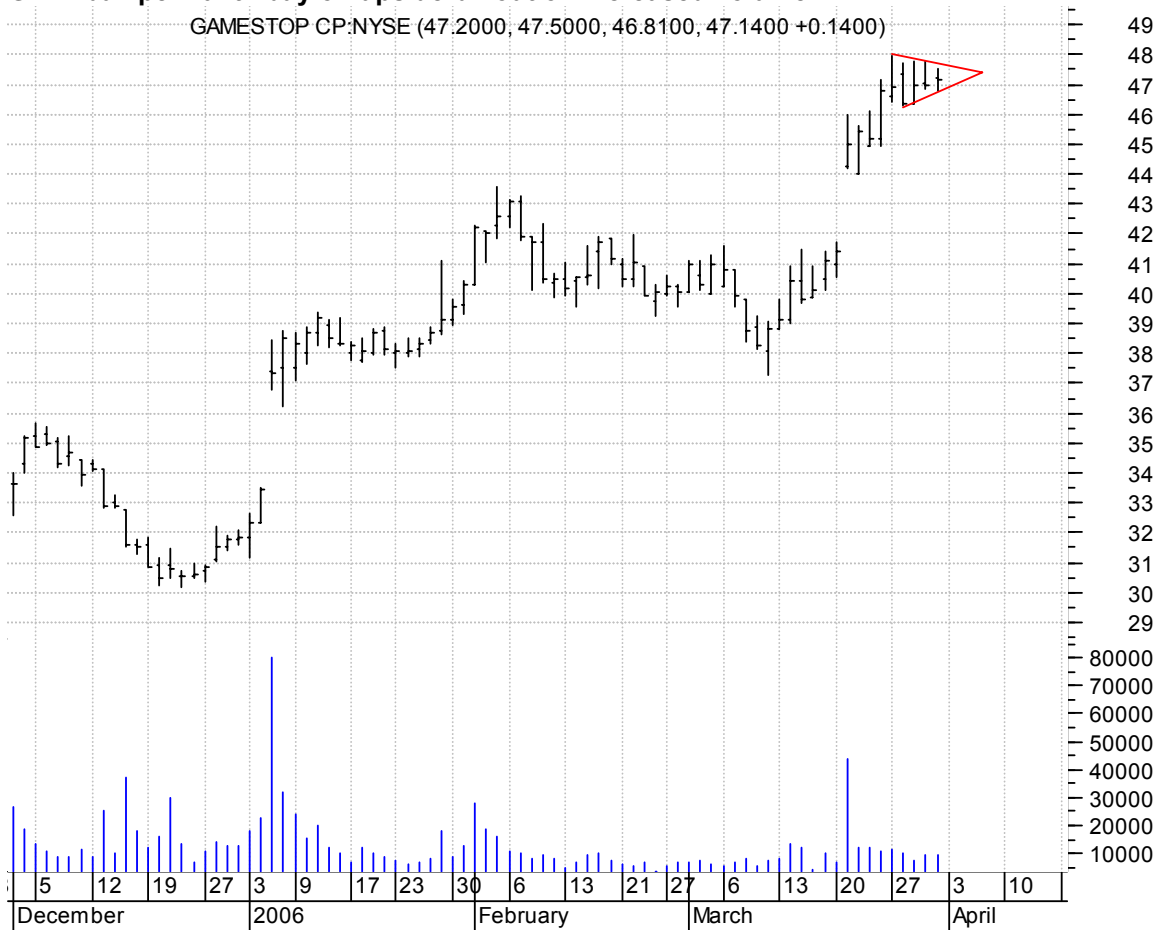


**FNSR asc. tri. preceded by 'pole-like' move / buy on upside brkout on increased volume**



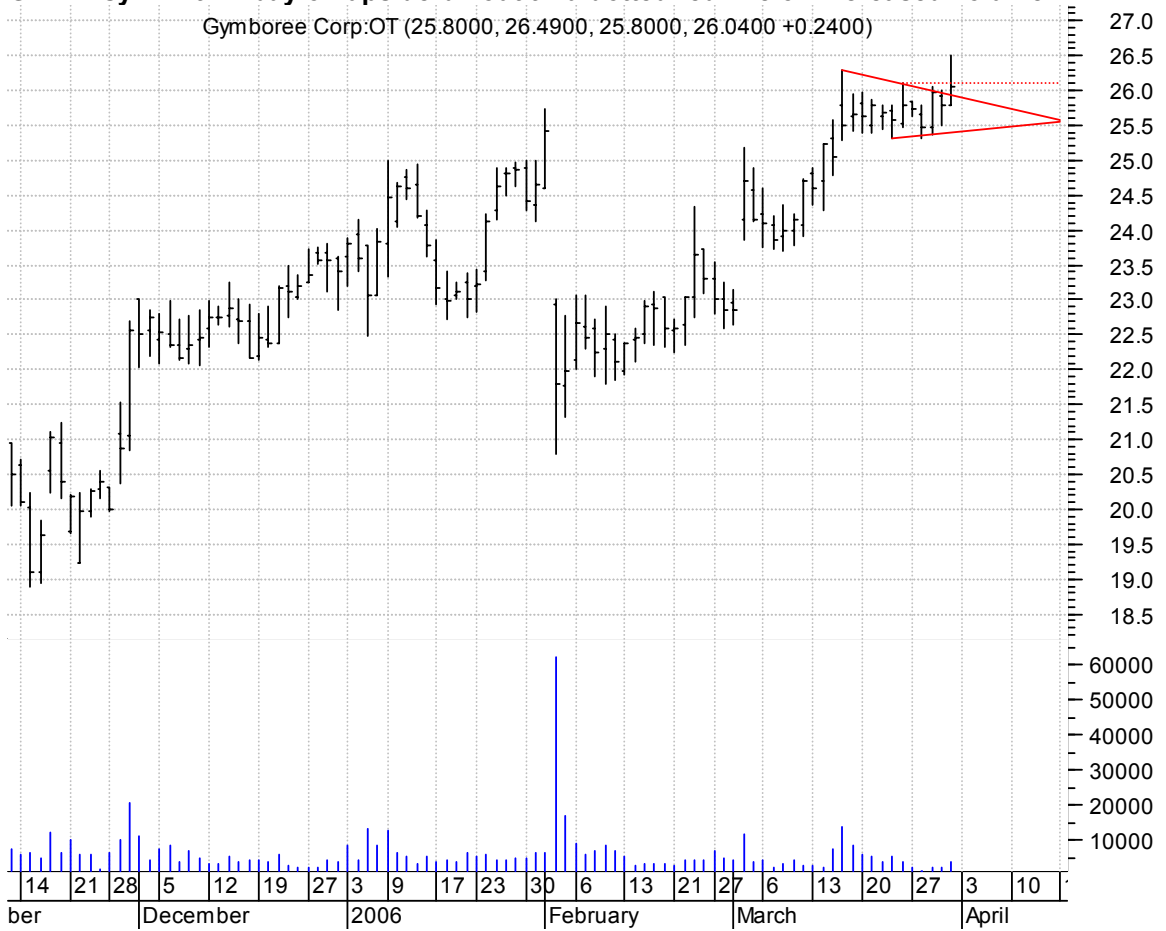
**GME bull pennant / buy on upside brkout on increased volume**

GAMESTOP CP:NYSE (47.2000, 47.5000, 46.8100, 47.1400 +0.1400)



**GYMB symm. tri. / buy on upside brkout thru dotted red line on increased volume**

Gymboree Corp:OT (25.8000, 26.4900, 25.8000, 26.0400 +0.2400)



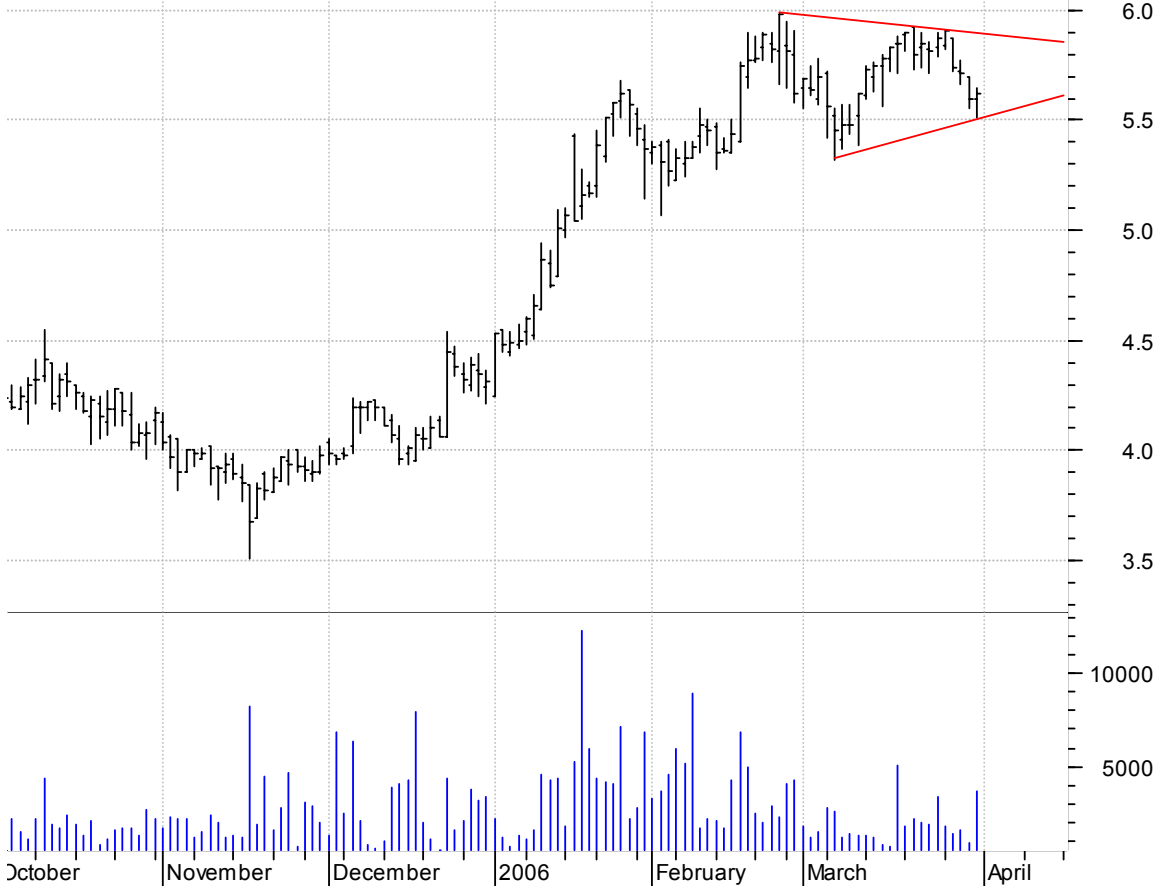
**HNZ symm. tri. preceded by 'pole-like' move / buy on upside brkout on increased volume**

Heinz H.J.:NYSE (37.6500, 37.9600, 37.5900, 37.9200 +0.3000)



**HPOL symm. tri. / buy on upside brkout on increased volume**

Harris Interacti (5.6000, 5.6500, 5.5100, 5.6200 +0.0200)



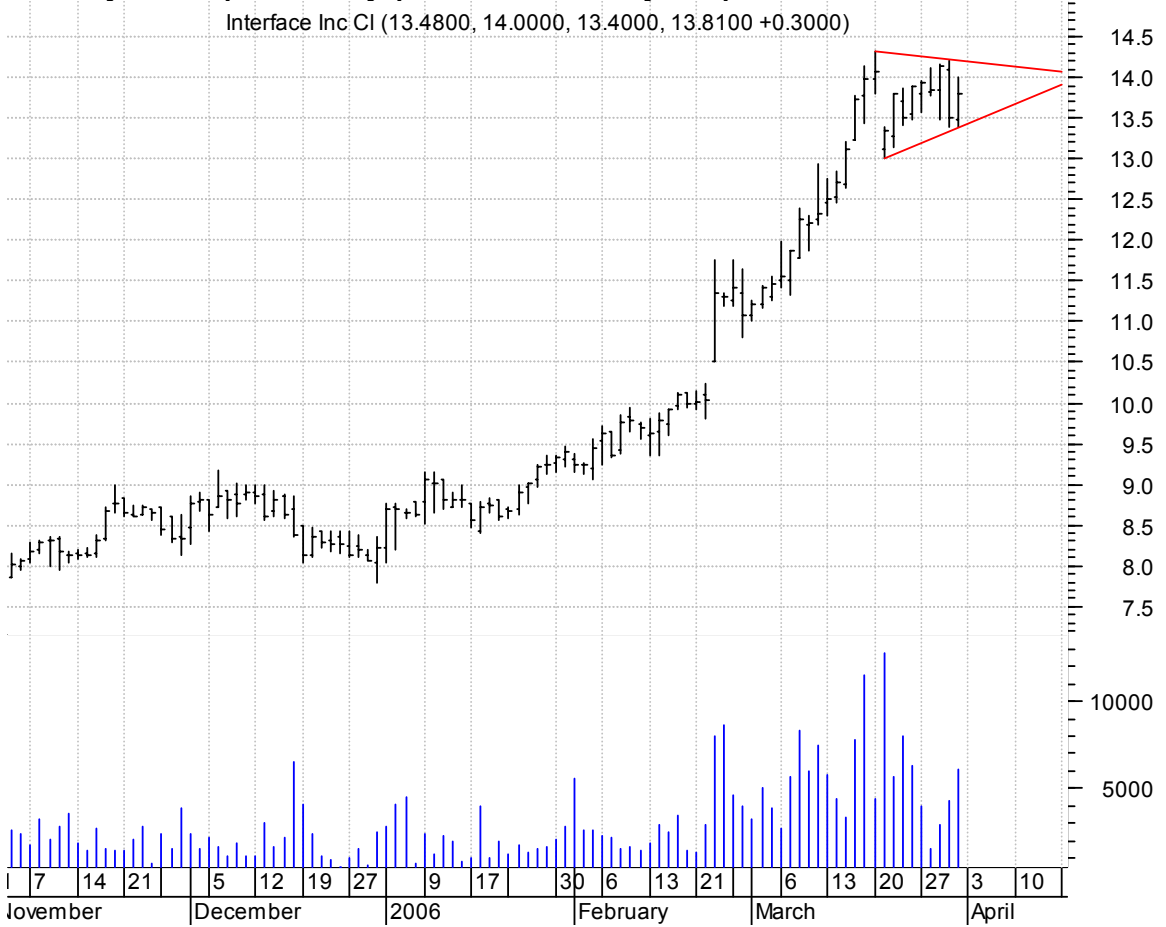
**HPQ symm. tri. / buy on upside brkout on increased volume**

Hewlett-Packard (32.5800, 33.2100, 32.5600, 32.9000 +0.3300)



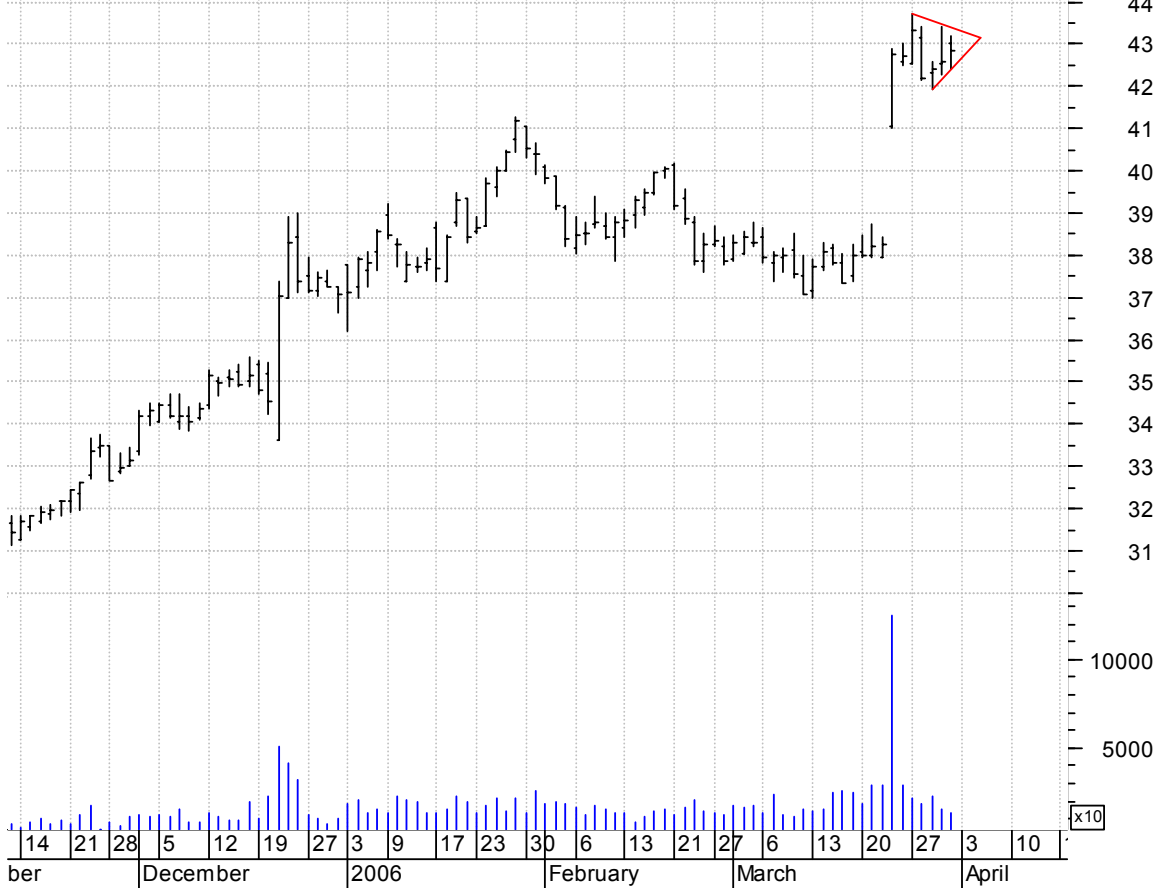
**IFSIA symm. tri. preceded by 'pole-like' move / buy on upside brkout on increased volume**

Interface Inc CI (13.4800, 14.0000, 13.4000, 13.8100 +0.3000)



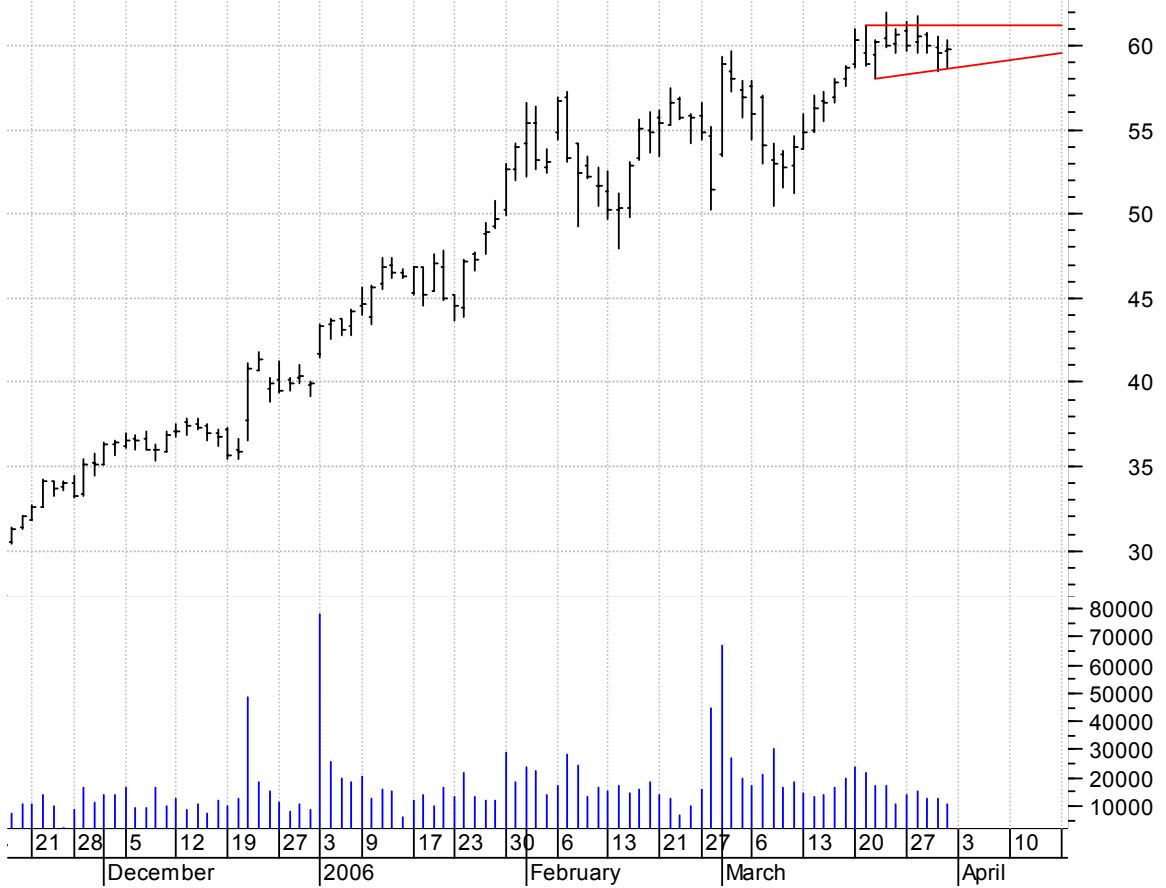
**JBL bull pennant / buy on upside brkout on increased volume**

Jabil Circuit In (43.0000, 43.1900, 42.4300, 42.8600 +0.2900)

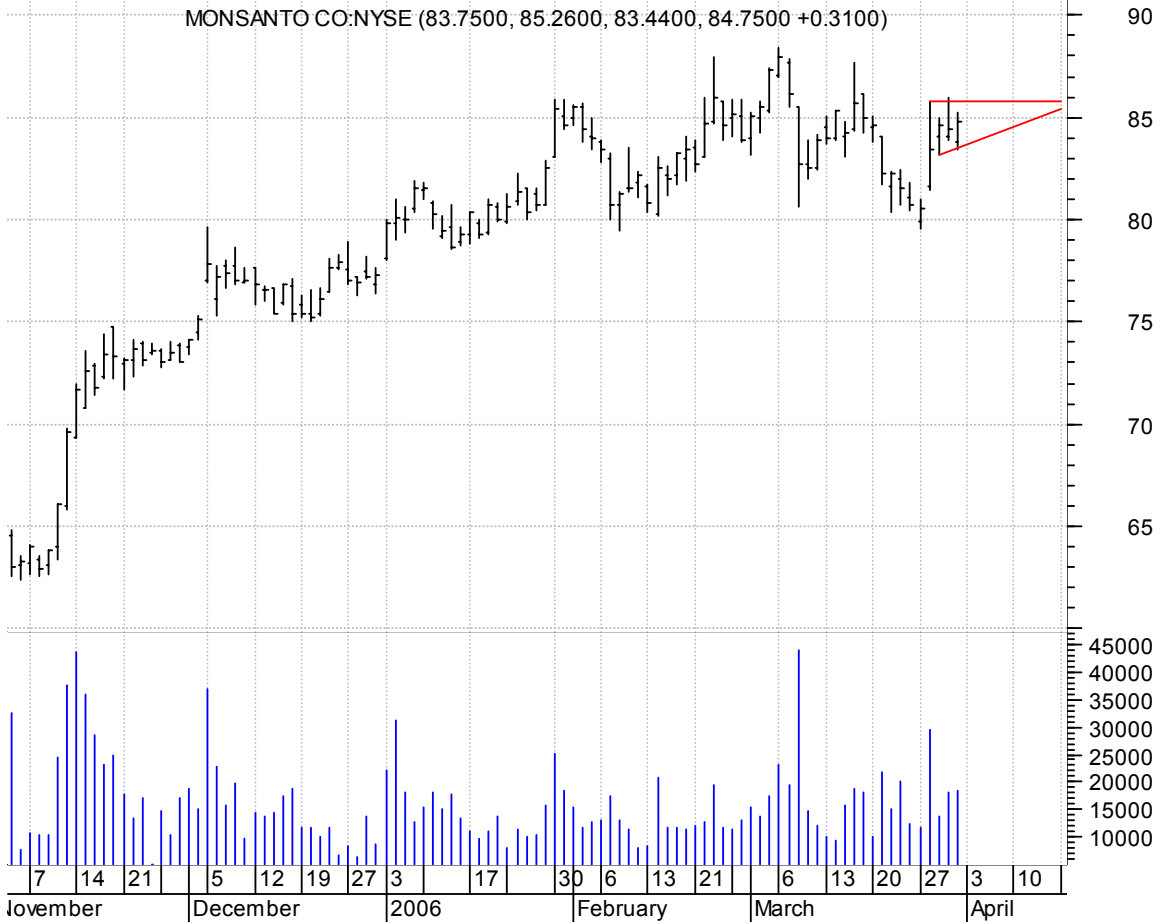


**JOYG sloppy asc. tri. / buy on upside brkout on increased volume**

Joy Global:OTC (59.6500, 60.3400, 58.6900, 59.7700 +0.2600)



**MON asc. tri. / buy on upside breakout on increased volume**



**MSTR symm. tri. / buy on upside breakout on increased volume**





**MW symm. tri. preceded by 'pole-like' move / buy on upside breakout on increased volume**

Mens Warehouse I (35.6300, 36.0300, 35.5200, 35.9400 +0.5100)



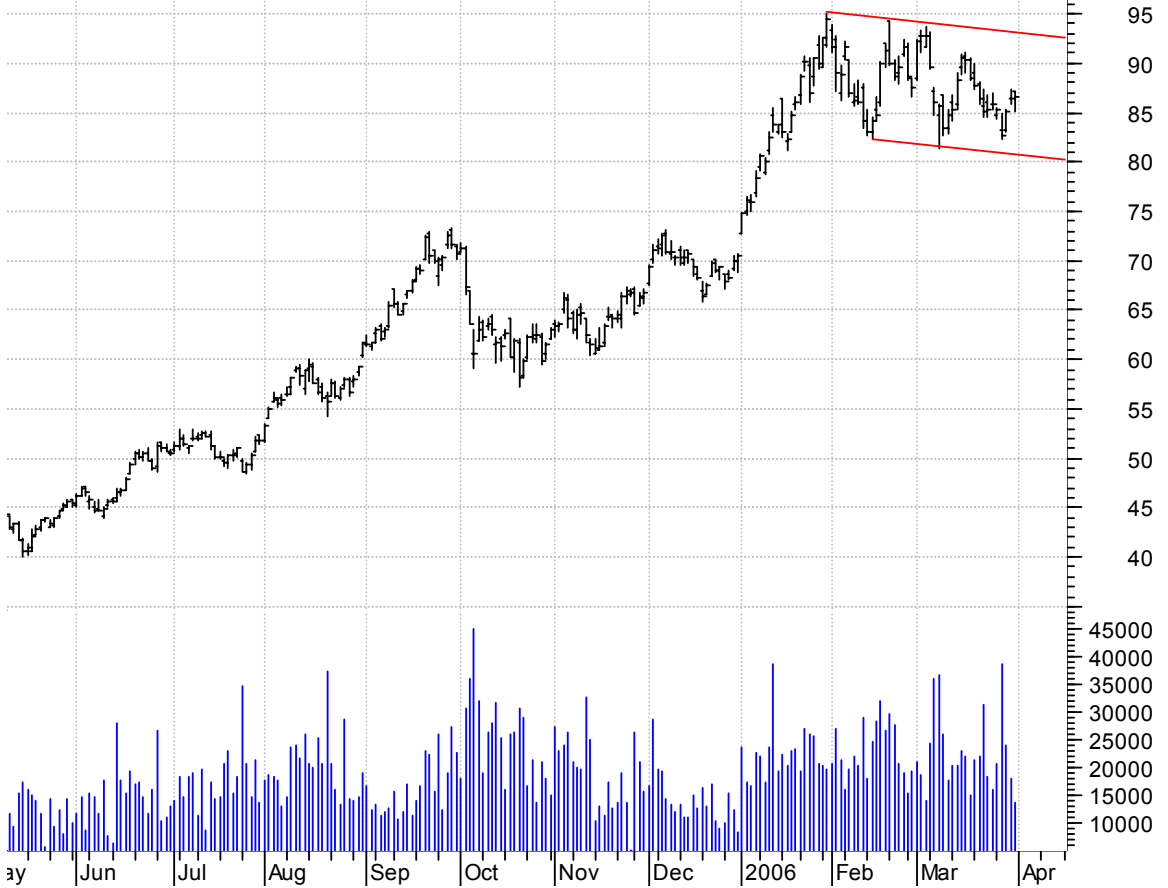
**PACR symm. tri. / buy on upside breakout on increased volume**

PACER INTL INC:O (32.4000, 32.7600, 32.0300, 32.6800 +0.4700)



**PBR bullish flag / buy on upside breakout on increased volume**

Petroleo Brasil (87.1500, 87.1500, 85.1800, 86.6700 +0.3100)



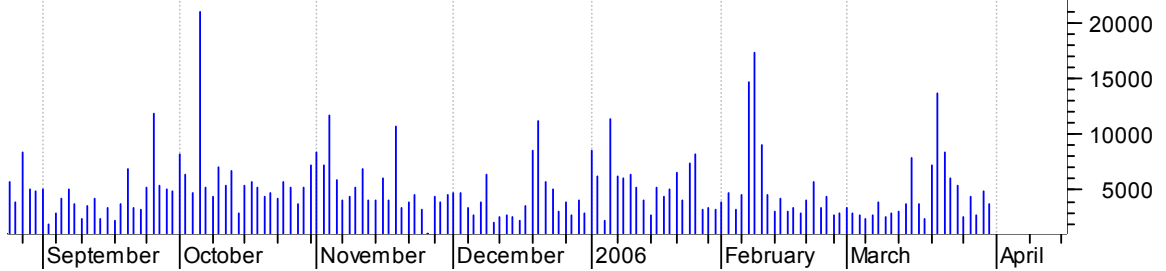
**PTIE symm. tri. preceded by 'pole-like' move / buy on upside breakout on increased volume**

Pain Therapeutic (10.7600, 11.0600, 10.7000, 10.8700 +0.1000)



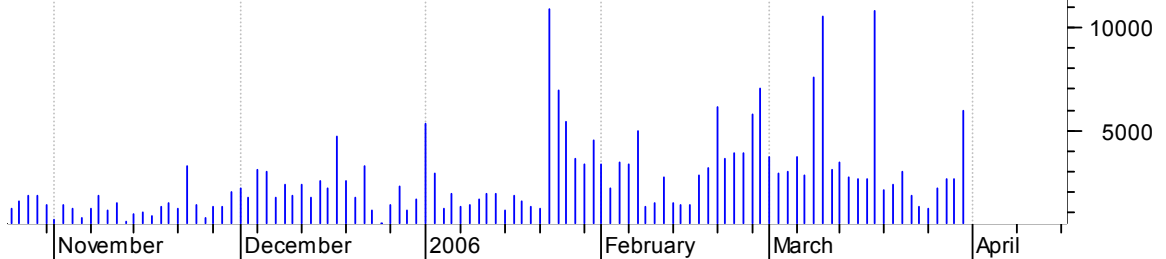
**RMD bull pennant / buy on upside brkout (thru dotted red line) on increased volume**

Resmed Inc:NYSE (43.4800, 44.2000, 43.2900, 43.9800 +0.5000)



**SBIB asc. tri. brkout / buy and use bottom of pattern (asc. trendline) as failure**

Sterling Bancsha (17.9800, 18.0500, 17.7700, 18.0500 +0.1100)



**SCVL asc. tri. / buy on upside breakout on increased volume**



**SIFY symm. tri. preceded by 'pole-like' move / buy on upside breakout on increased volume**



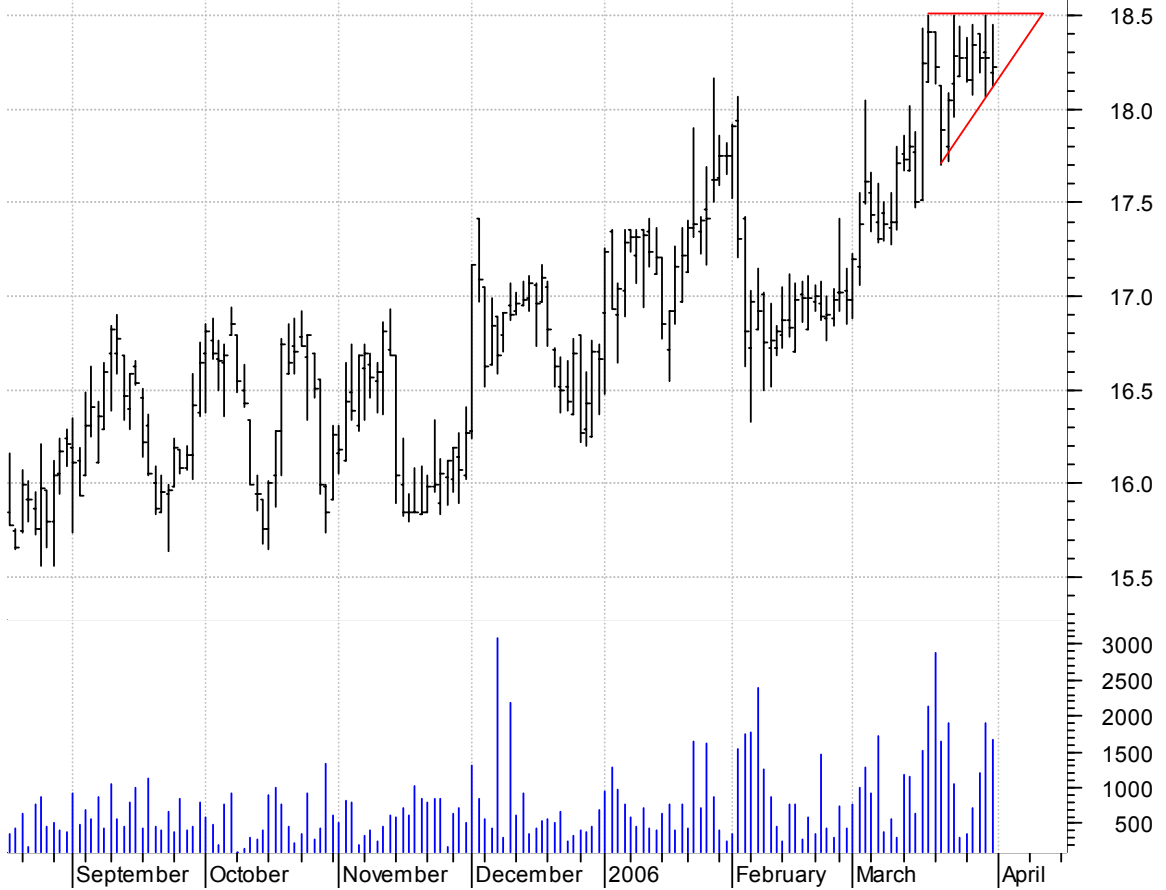
**TEK bullish pennant / buy on upside brkout on increased volume**

Tektronix Inc:NYSE (35.3200, 35.7100, 35.2300, 35.7100 +0.5500)



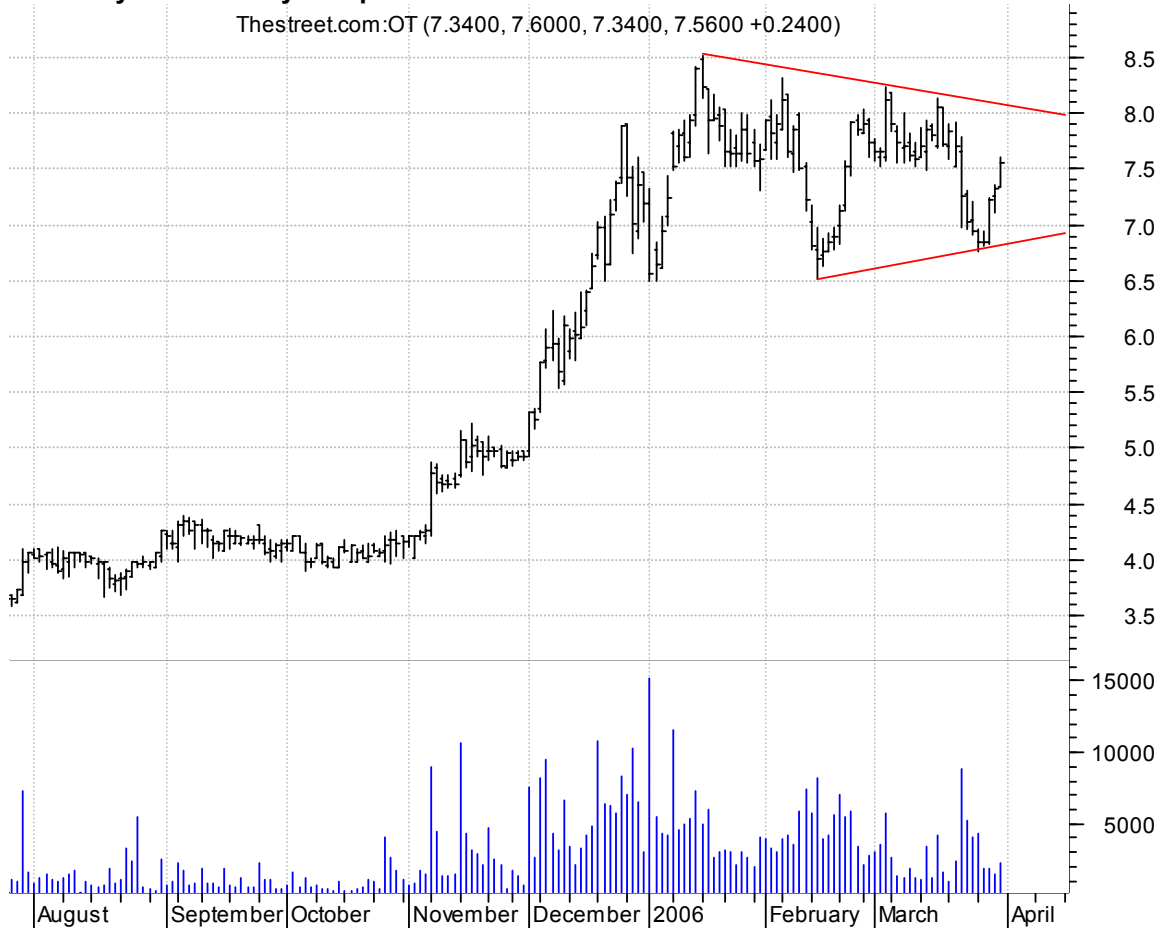
**TRY asc. tri. / buy on upside brkout on increased volume**

Triarc Cos:NYSE (18.2000, 18.4500, 18.1300, 18.2300 -0.0500)



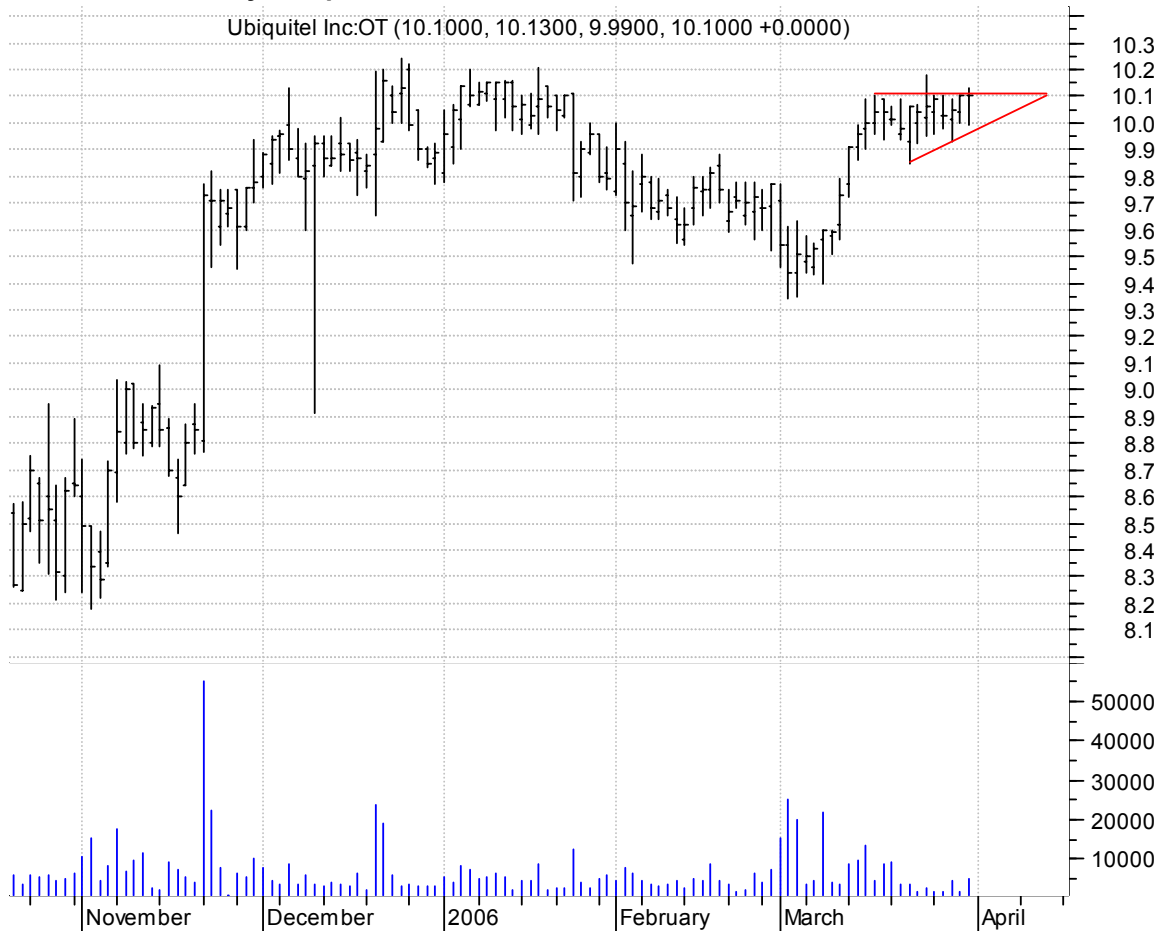
**TSCM symm. tri. / buy on upside brkout on increased volume**

Thestreet.com:OT (7.3400, 7.6000, 7.3400, 7.5600 +0.2400)



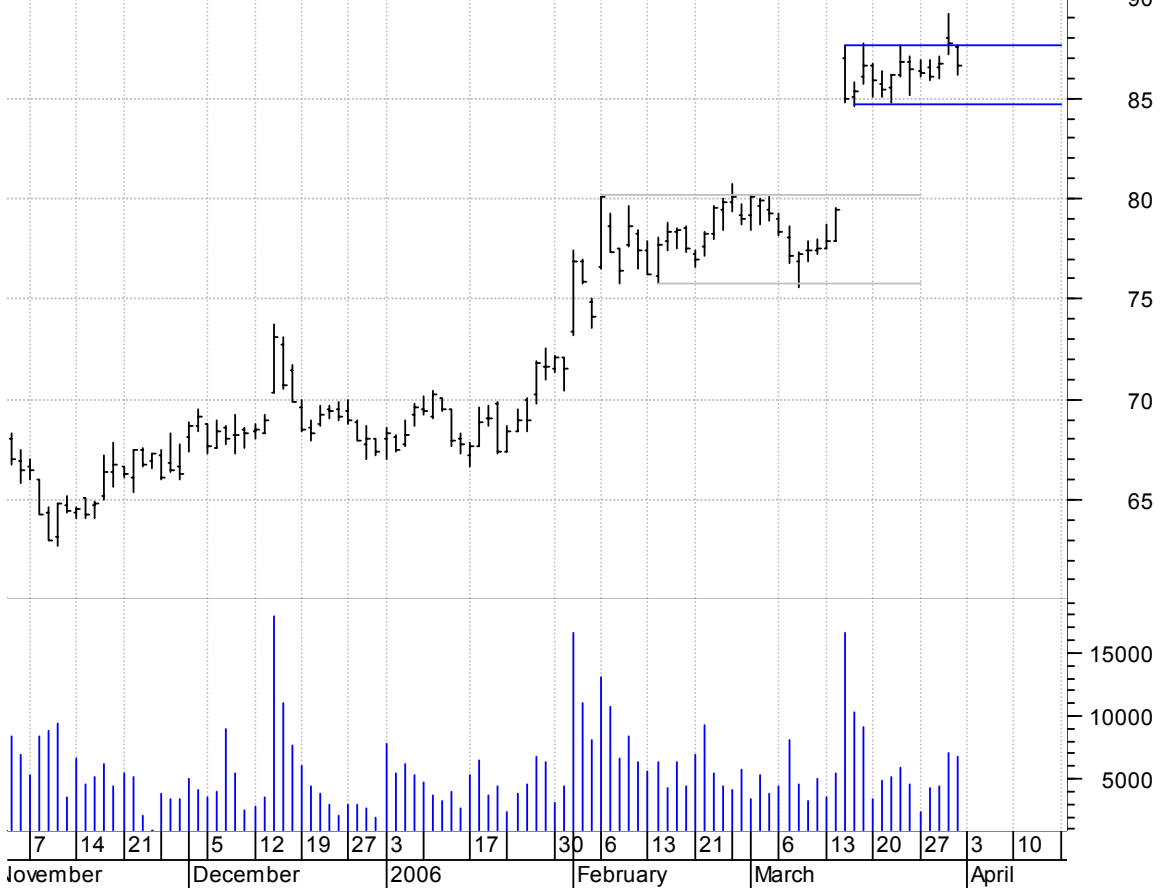
**UPCS asc. tri. / buy on upside brkout on increased volume**

Ubiquitel Inc:OT (10.1000, 10.1300, 9.9900, 10.1000 +0.0000)



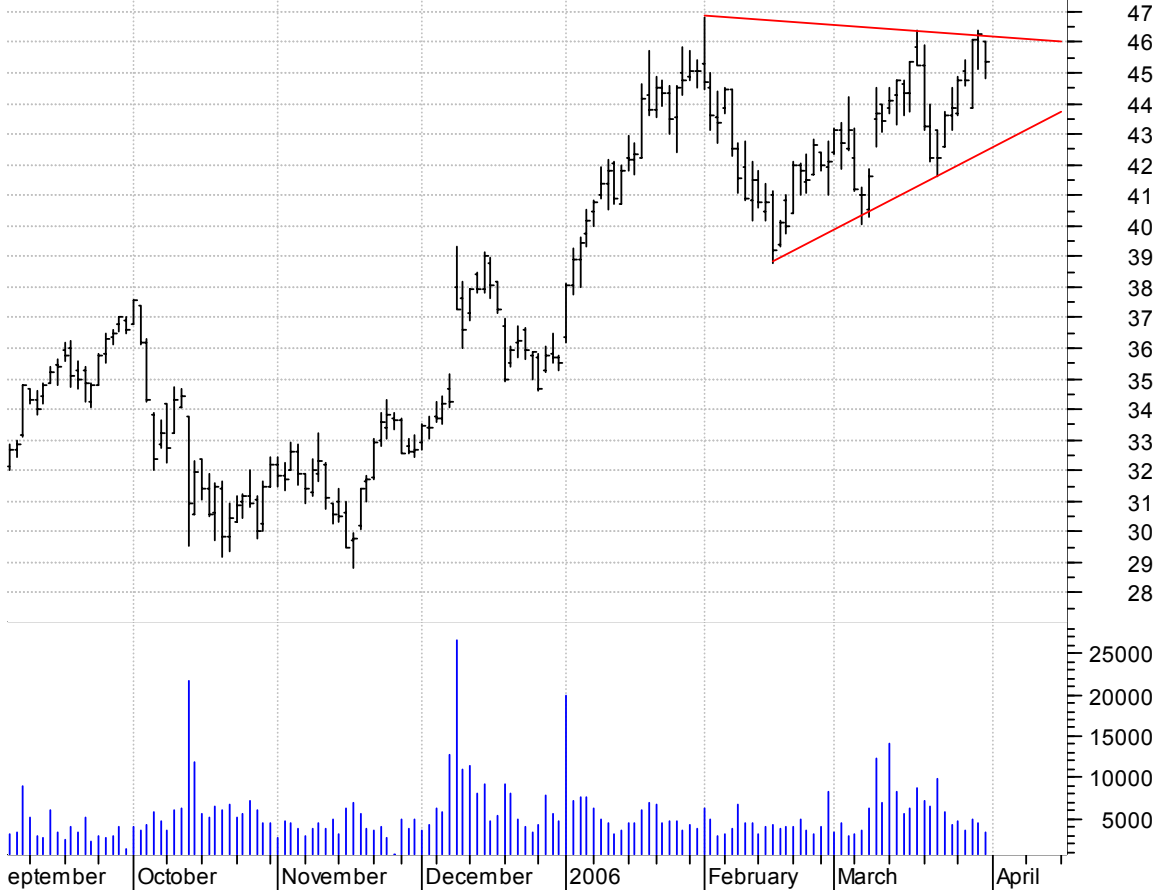
**VMC rectangle preceded by 'pole-like' move / buy on upside brkout on increased volume**

Vulcan Materials (87.5500, 87.6700, 86.2000, 86.6500 -1.1100)



**VTS symm. tri. / buy on upside brkout on increased volume**

Veritas DGC Inc: (46.0100, 46.0100, 44.8000, 45.3900 -0.8700)



### XOM symm. tri. / buy on upside brkout on increased volume



### XRX symm. tri. / buy on upside brkout on increased volume





**chartpatterns.com**  
Chart Pattern Analysis for Timing the Markets

[KMatras@aol.com](mailto:KMatras@aol.com)