

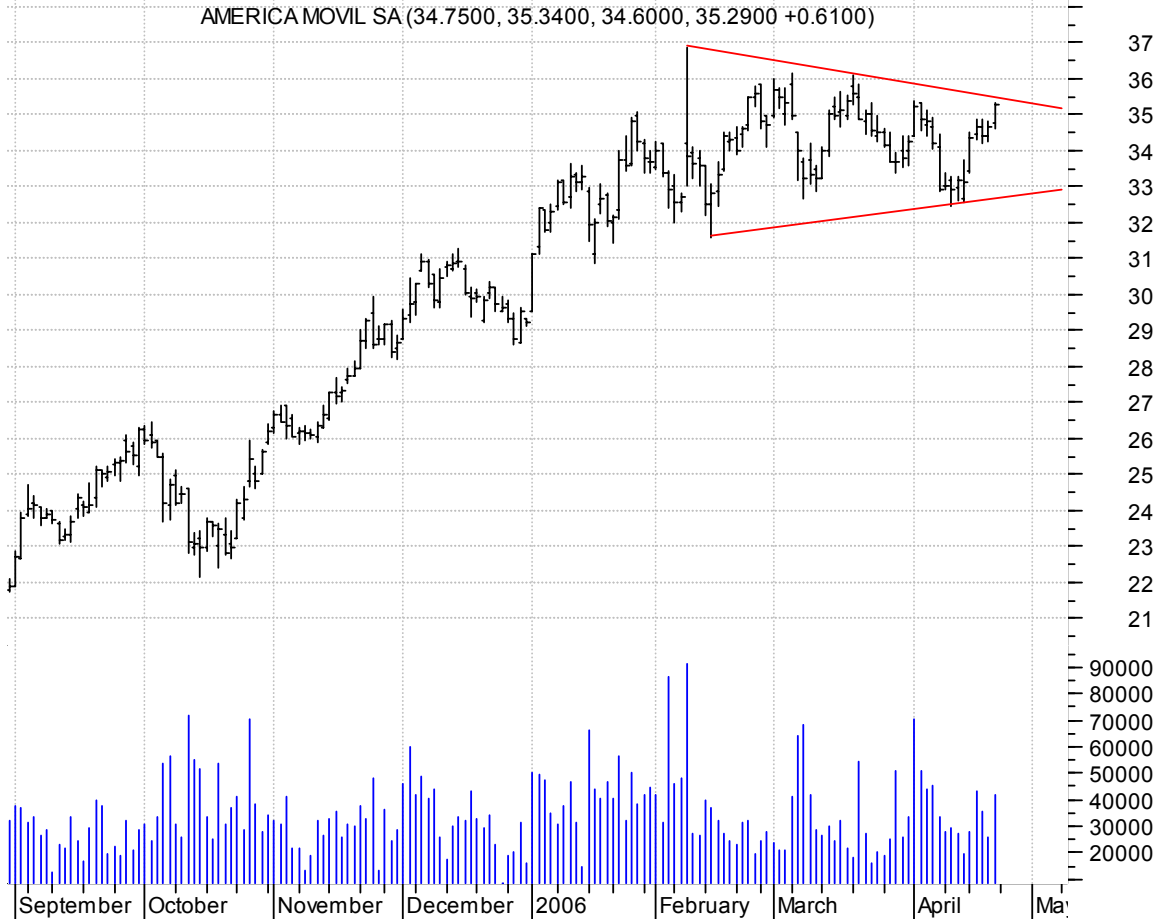
AKN symm. tri. / buy on upside brkout on increased volume

AKORN INC:AMEX (5.1000, 5.3700, 5.0800, 5.1700 +0.1200)



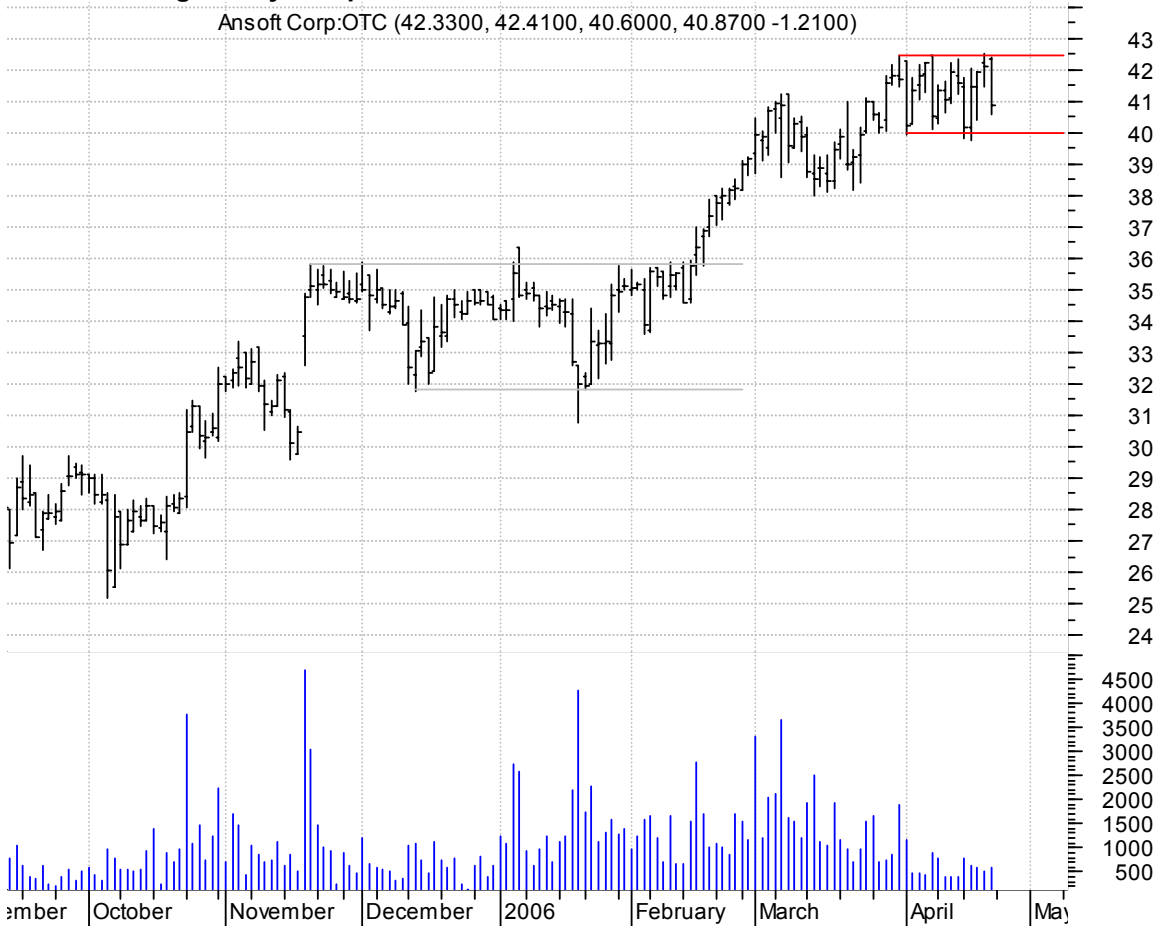
AMX symm. tri. / buy on upside brkout on increased volume

AMERICA MOVIL SA (34.7500, 35.3400, 34.6000, 35.2900 +0.6100)



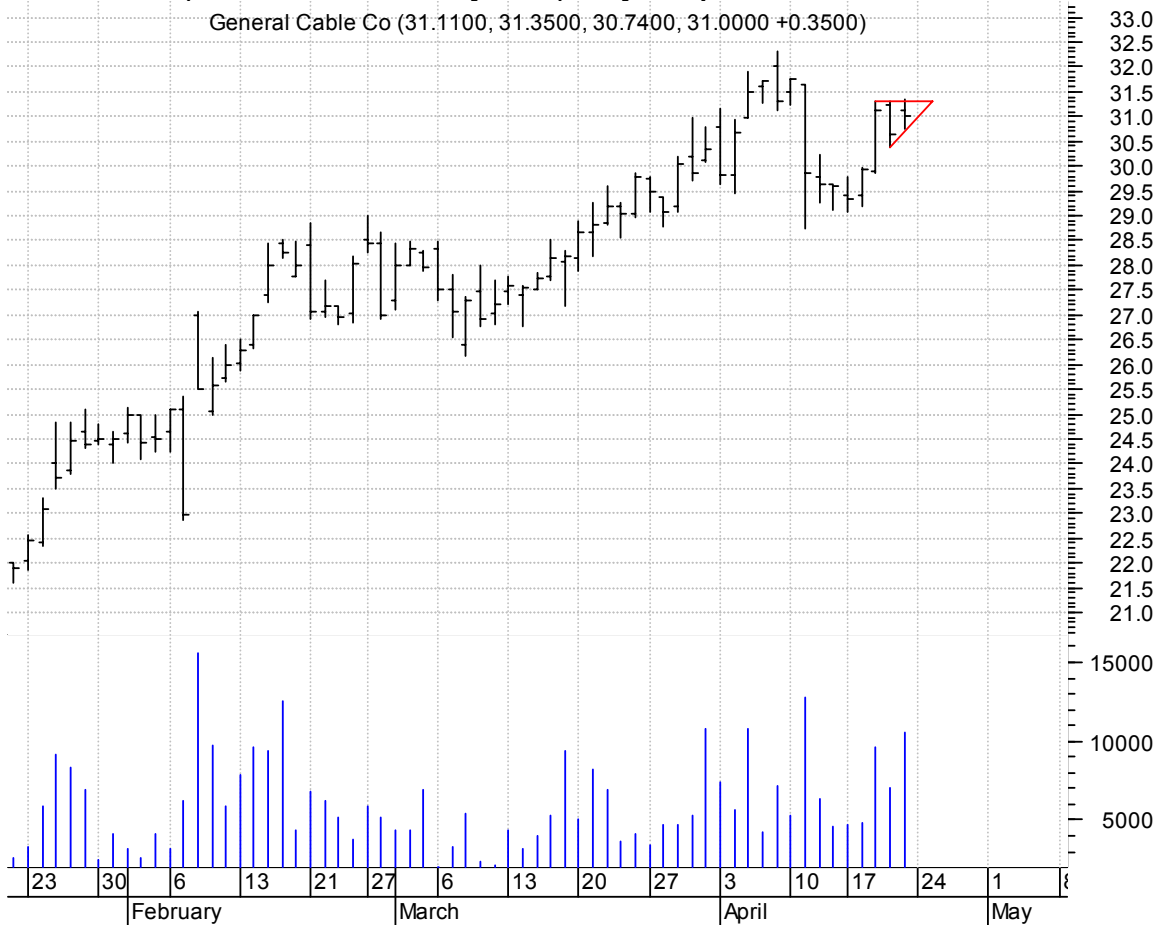
ANST rectangle / buy on upside breakout on increased volume

Ansoft Corp.OTC (42.3300, 42.4100, 40.6000, 40.8700 -1.2100)



BGC asc. tri. (better seen on intraday chart) / buy on upside breakout on increased volume

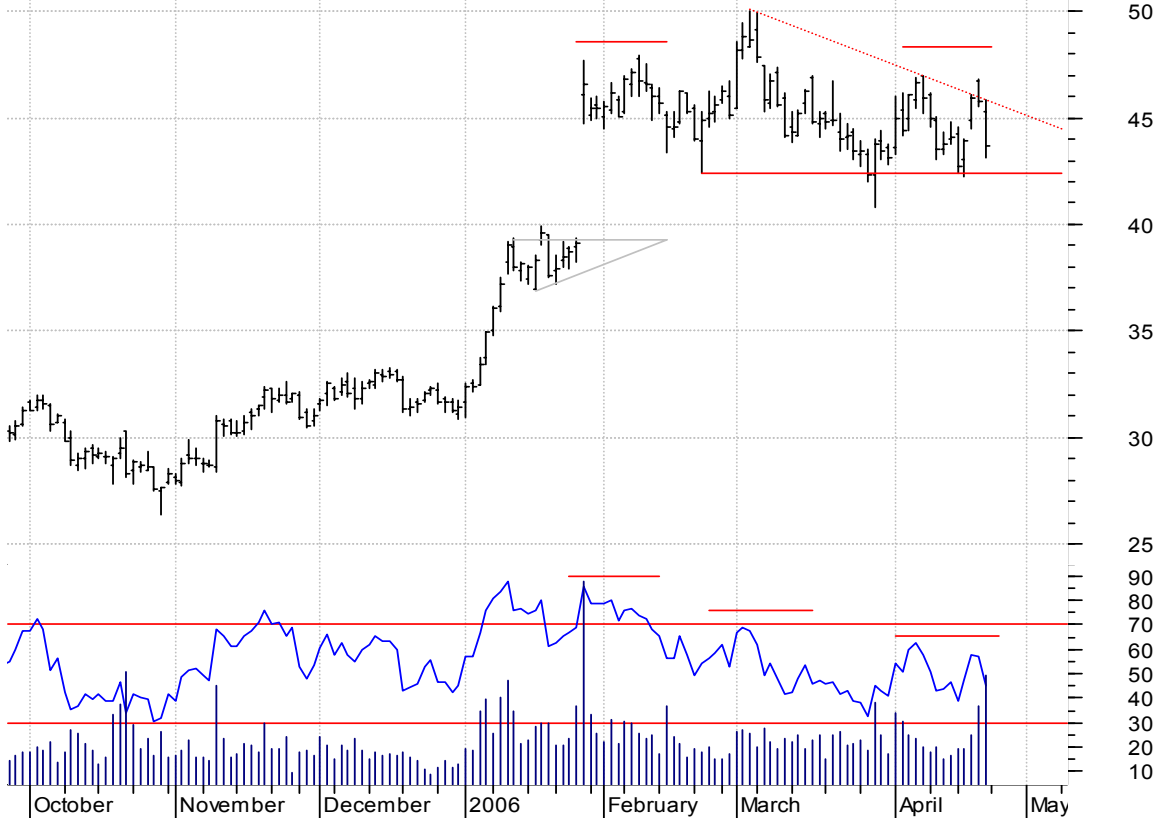
General Cable Co (31.1100, 31.3500, 30.7400, 31.0000 +0.3500)



**BRCM h. & sh. / 1) sell on downside brkout on increased volume or
2) buy on upside brkout on increased volume**

[h. & sh. reversal pattern failure often times brkout sharply to the upside]

Broadcom Corp CI (45.2900, 45.8800, 43.1600, 43.6500 -2.1200)



CLMS symm. tri. / buy on upside brkout on increased volume

CALAMOS ASSET MG (41.7100, 42.1400, 41.4100, 41.5600 -0.1900)



DTLK symm. tri. preceded by 'pole-like' move / buy on upside brkout on increased volume

Datalink Corp:OT (5.9000, 6.0000, 5.7500, 5.9100 +0.1000)



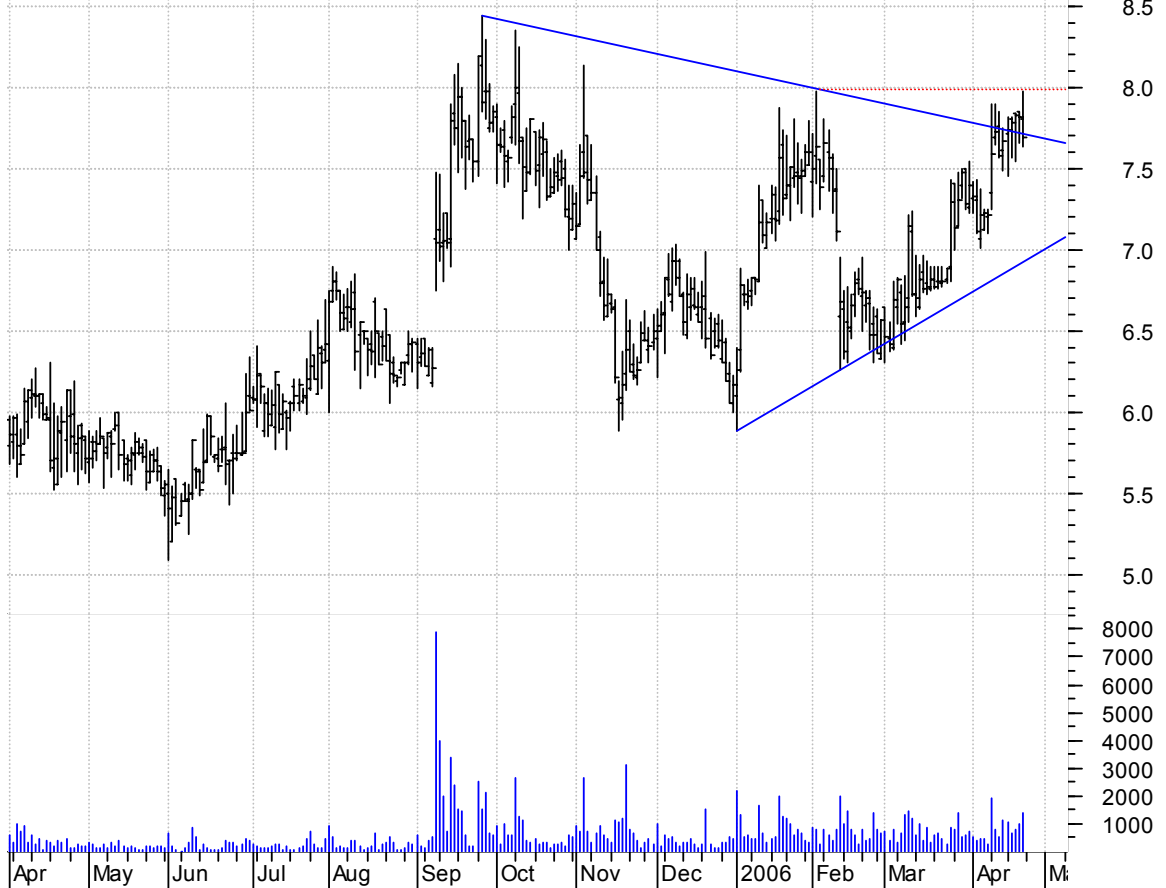
GCO symm. tri. / buy on upside brkout thru dotted red line on increased volume

Genesco Inc:NYSE (42.6000, 42.6000, 40.9700, 41.5500 -0.5500)



GCOM symm. tri. / buy on upside breakout thru dotted red line on increased volume

Globecomm System (7.8000, 7.9800, 7.6300, 7.6900 -0.1200)



GEHL symm. tri. preceded by 'pole-like' move / buy on upside breakout on increased volume

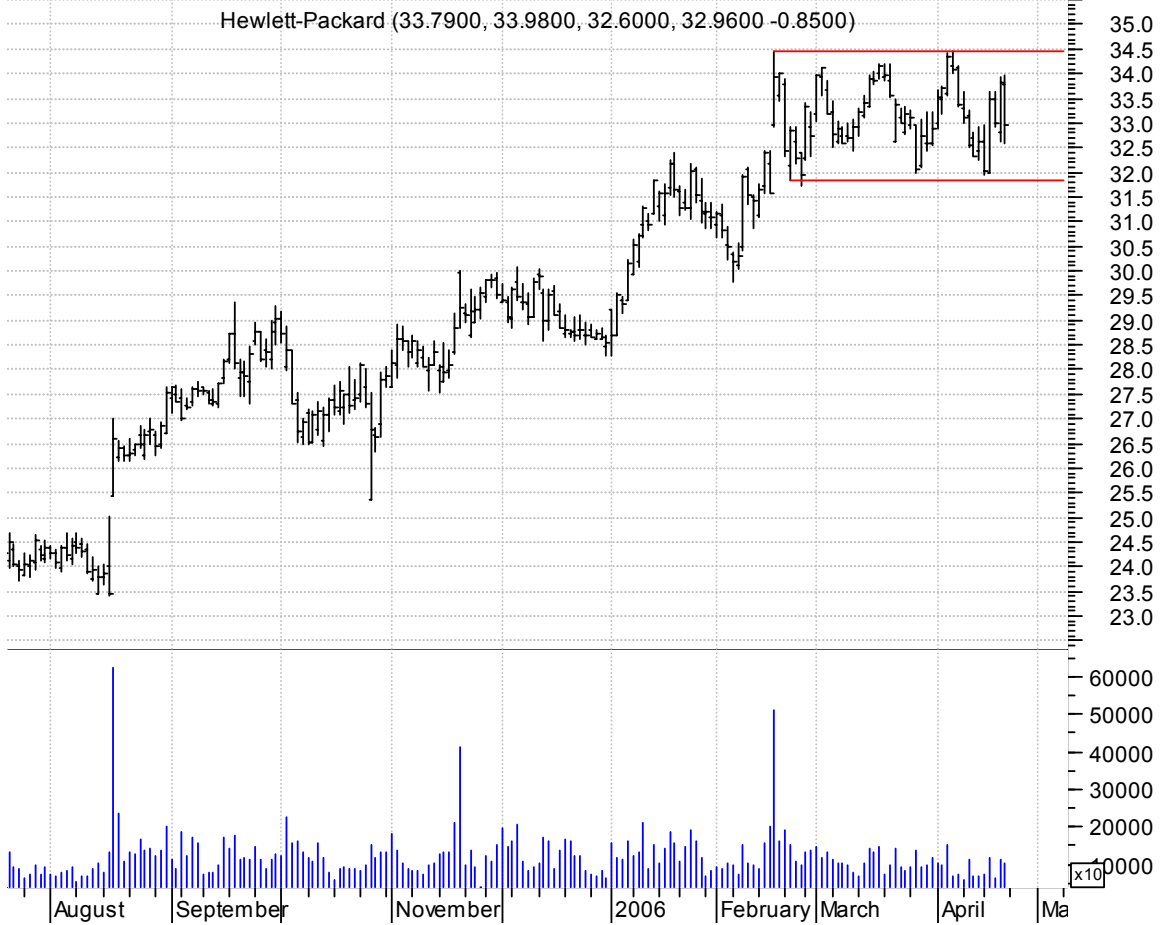
Gehl Co:OTC (38.9800, 39.5600, 38.7800, 39.0500 +0.1300)



GRP bull pennant (better seen on an intraday chart) / buy on upside brkout on increased volume



HPQ rectangle / buy on upside brkout on increased volume



ICTG symm. tri. / buy on upside brkout on increased volume



ILSE symm. tri. / buy on upside brkout on increased volume



IMOS symm. tri. / buy on upside breakout on increased volume



IRIX symm. tri. preceded by 'pole-like' move / buy on upside breakout on increased volume



IVAC symm. tri. / buy on upside brkout on increased volume

Intevac Inc:OTC (28.8000, 28.8000, 26.7400, 26.8900 -1.6600)

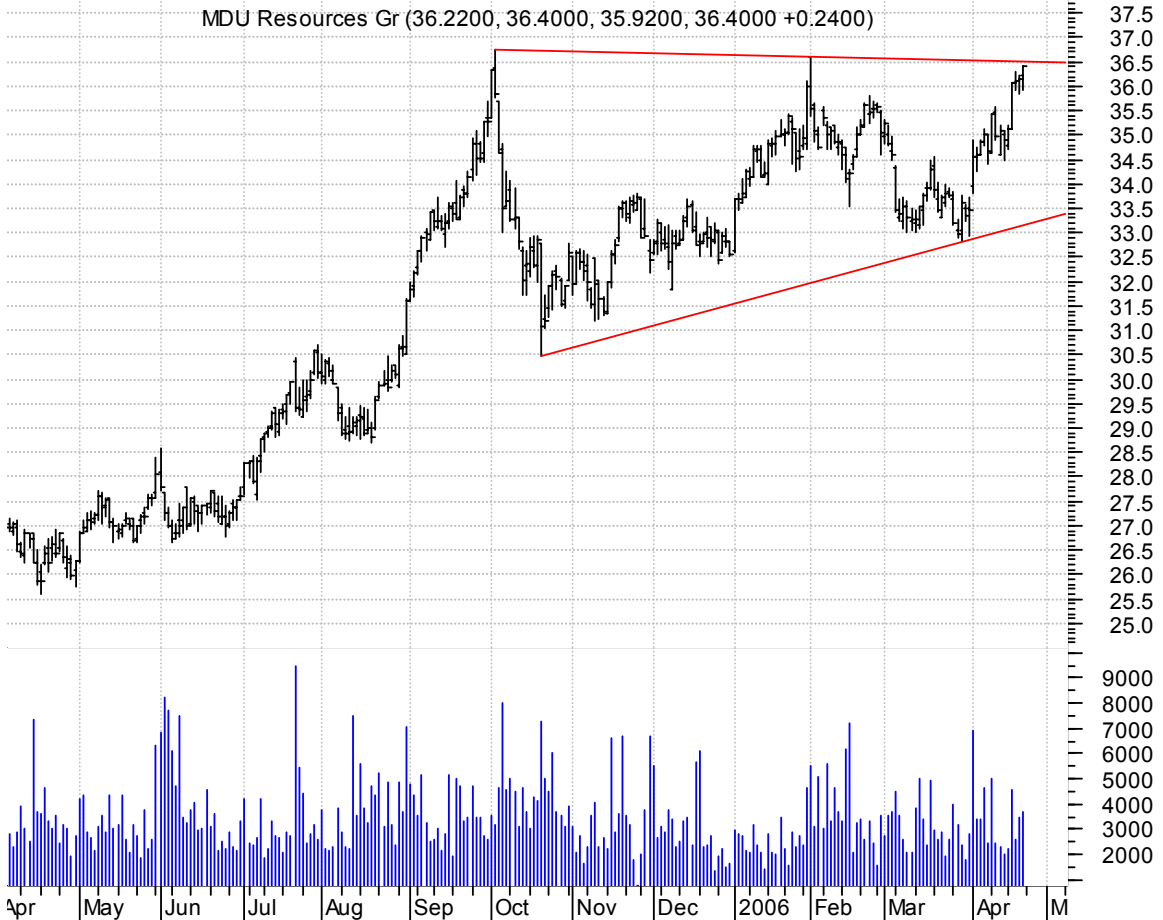


KEYW symm. tri. / buy on upside brkout thru dotted red line on increased volume

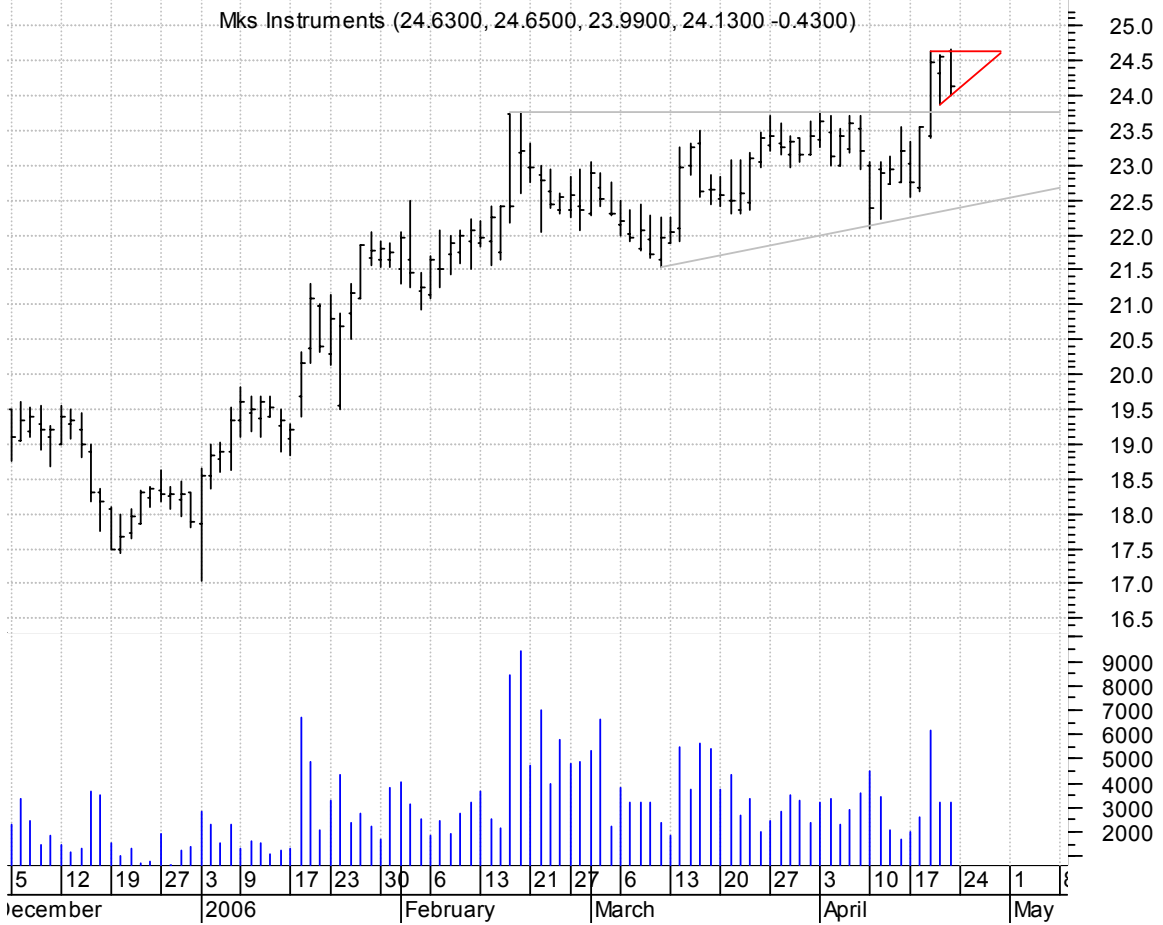
Essex Cp:OTC (22.4100, 22.4800, 22.0900, 22.4100 +0.1100)



MDU symm. tri. / buy on upside brkout on increased volume

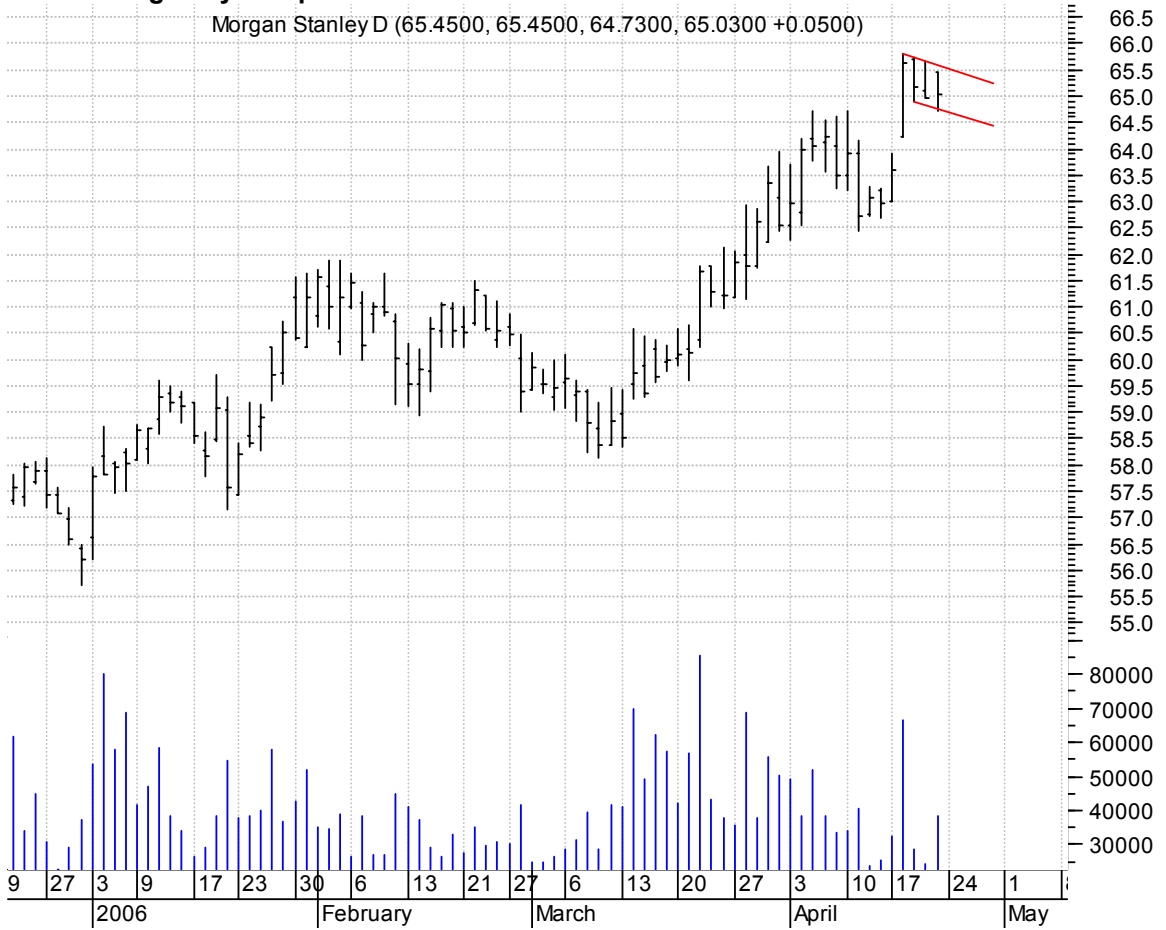


MKSI small asc. tri. (red -- better seen on intraday chart) / buy on upside brkout on increased volume



MS bull flag / buy on upside breakout on increased volume

Morgan Stanley D (65.4500, 65.4500, 64.7300, 65.0300 +0.0500)

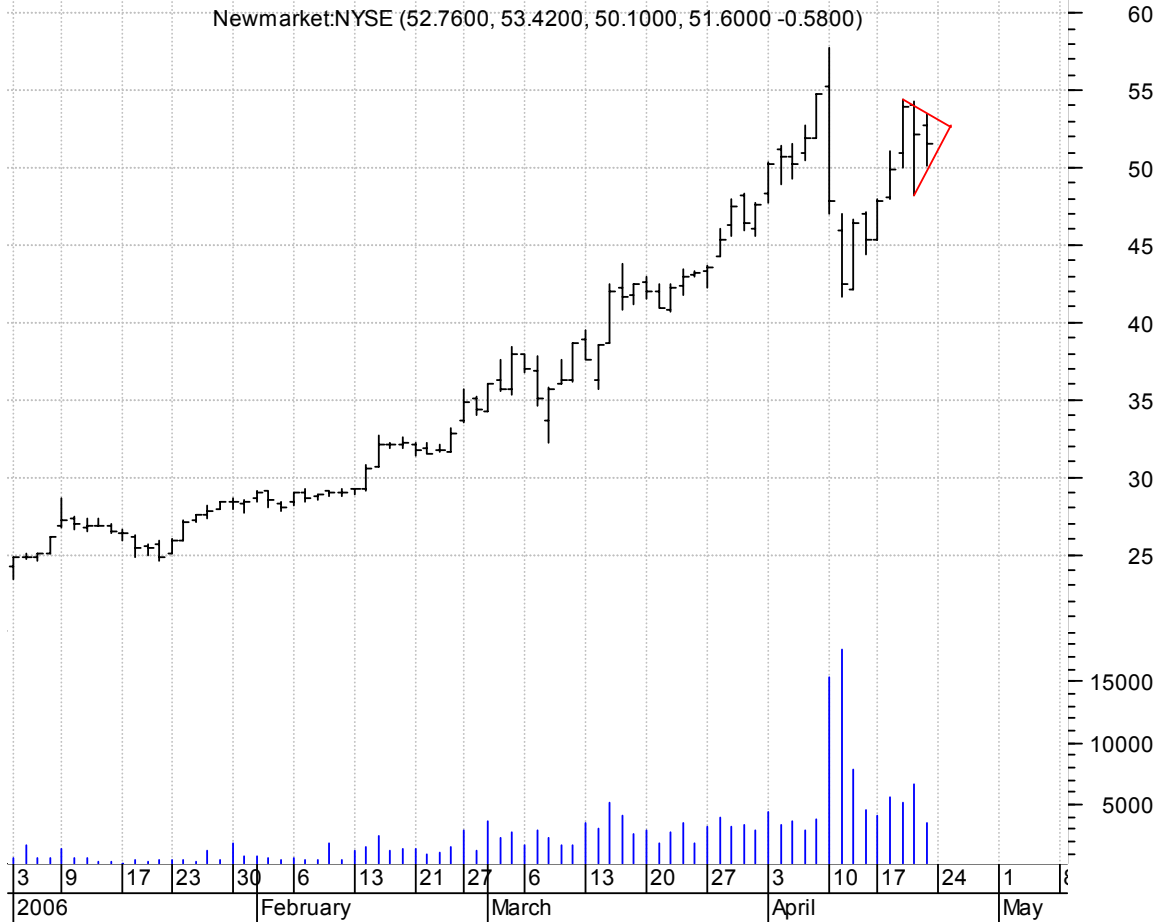


MTN asc. tri. / buy on upside breakout on increased volume

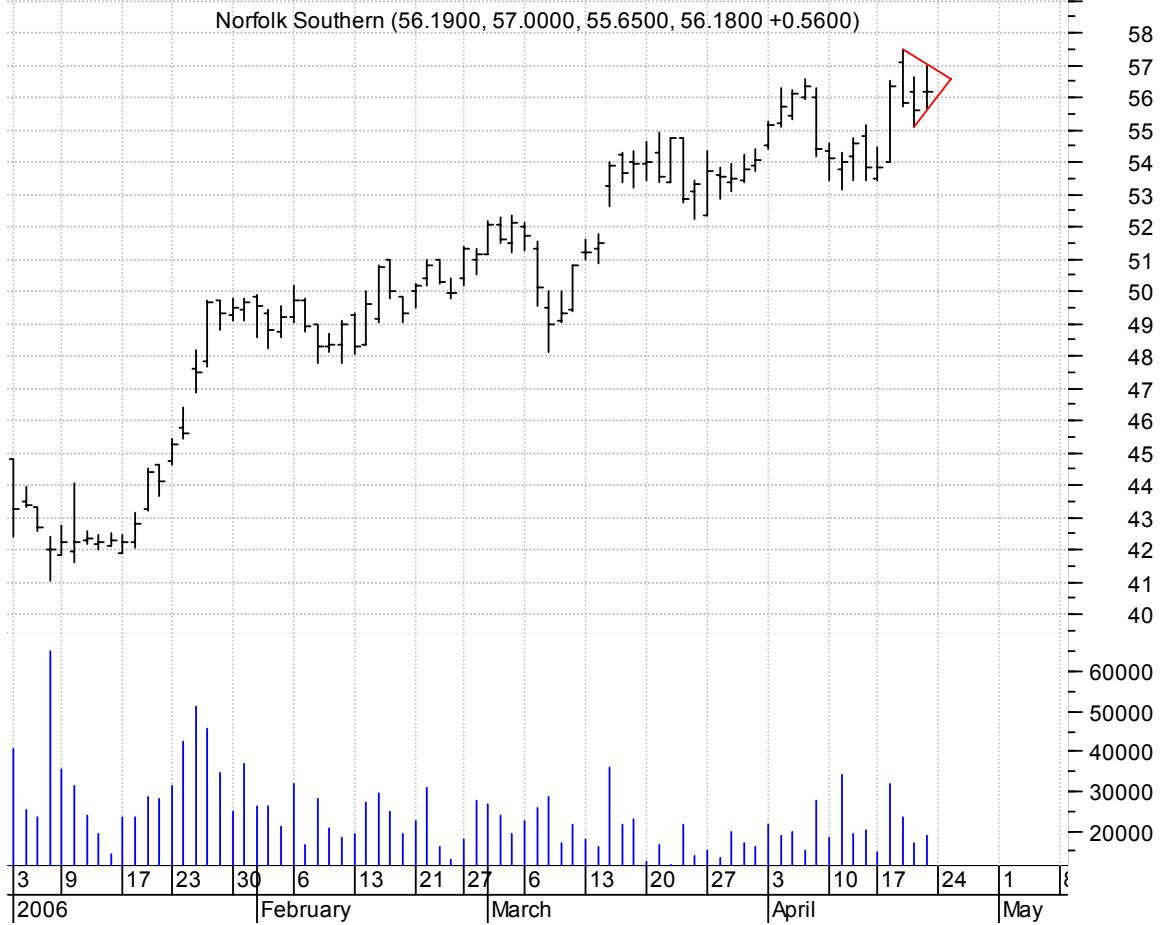
Vail Resorts Inc (39.0000, 39.0000, 38.4500, 38.7500 -0.0200)



NEU symm. tri. (better seen on intraday chart) / buy on upside brkout on increased volume

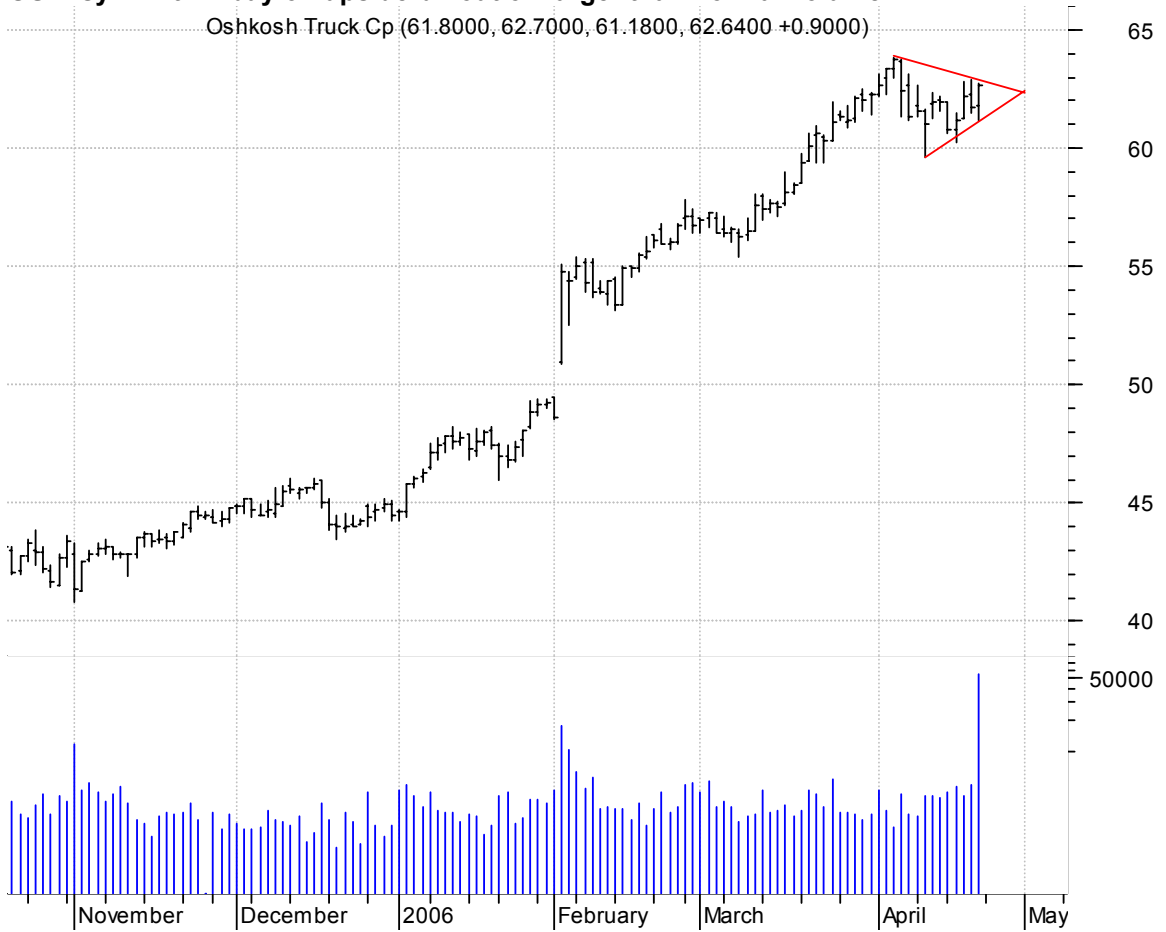


NSC symm. tri. (better seen on intraday chart) / buy on upside brkout on increased volume



OSK symm. tri. / buy on upside brkout on larger than normal volume

Oshkosh Truck Cp (61.8000, 62.7000, 61.1800, 62.6400 +0.9000)



PCLN sloppy asc. tri. / buy on upside brkout on increased volume

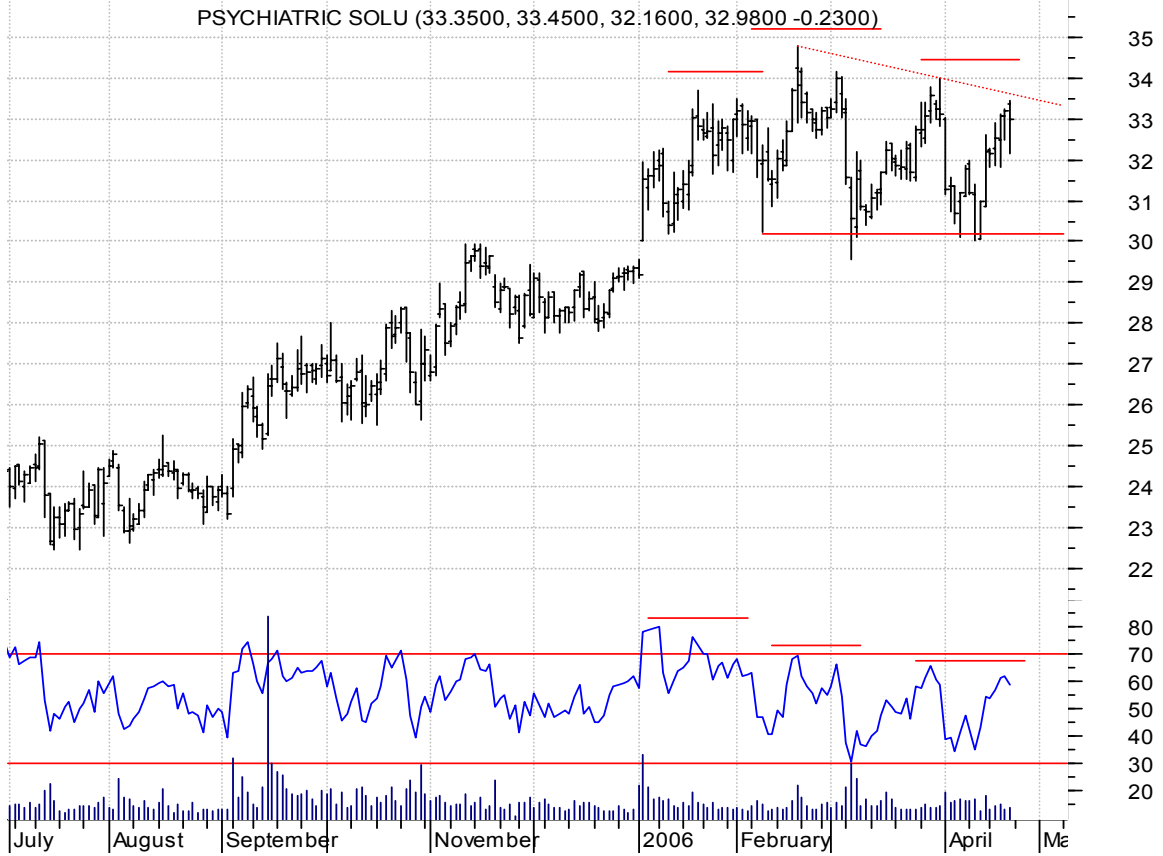
Priceline.com nc (25.1300, 25.1300, 24.3600, 24.8500 -0.0100)



PSYS h. & sh. / 1) sell on downside brkout on increased volume or

2) buy on upside brkout on increased volume

[h. & sh. reversal pattern failure often times brkout sharply to the upside]



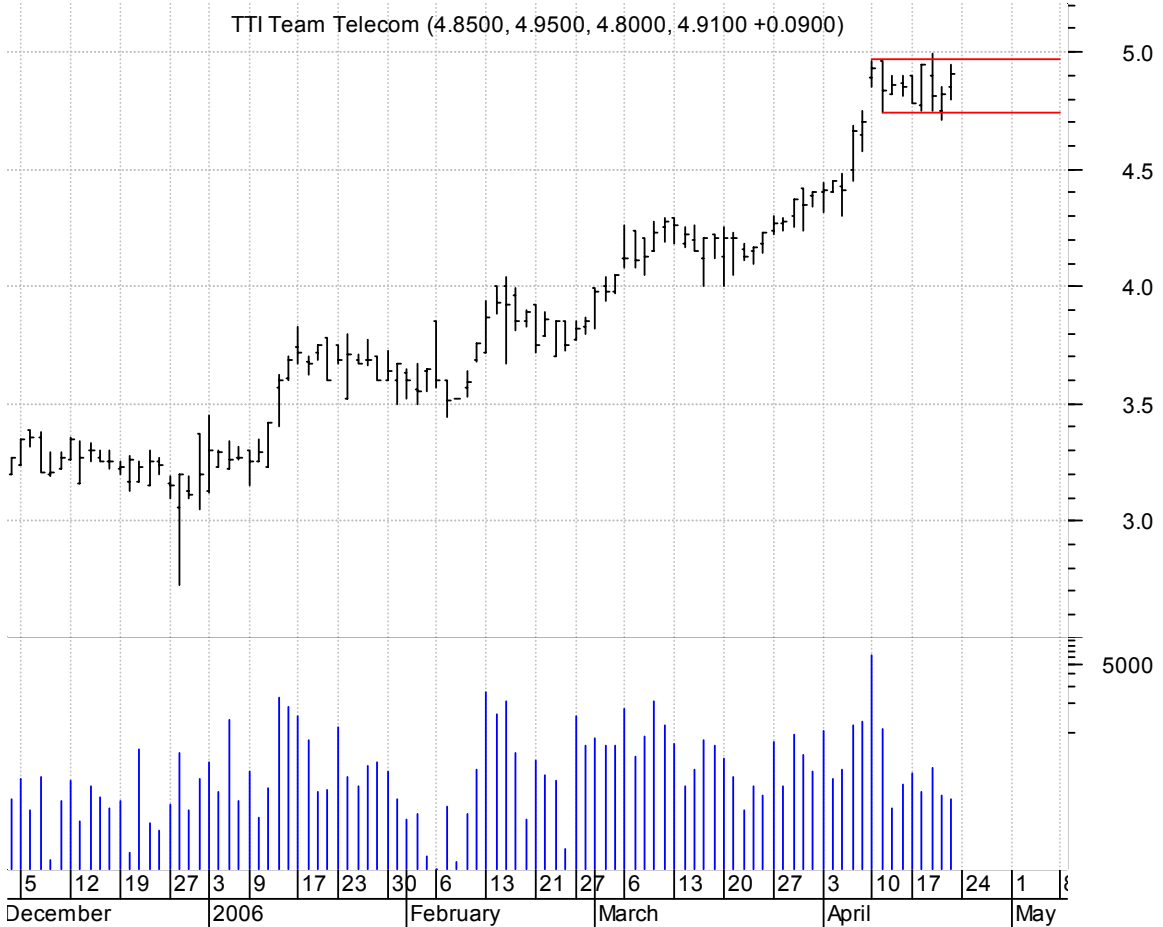
QCOM asc. tri. / buy on upside brkout on increased volume



RS symm. tri. / buy on upside breakout on increased volume



TTIL rectangle / buy on upside breakout on increased volume



chartpatterns.com
Chart Pattern Analysis for Timing the Markets

KMatras@aol.com