

**AIZ sloppy asc. tri. preceded by 'pole-like' move / buy on upside brkout on increased volume**



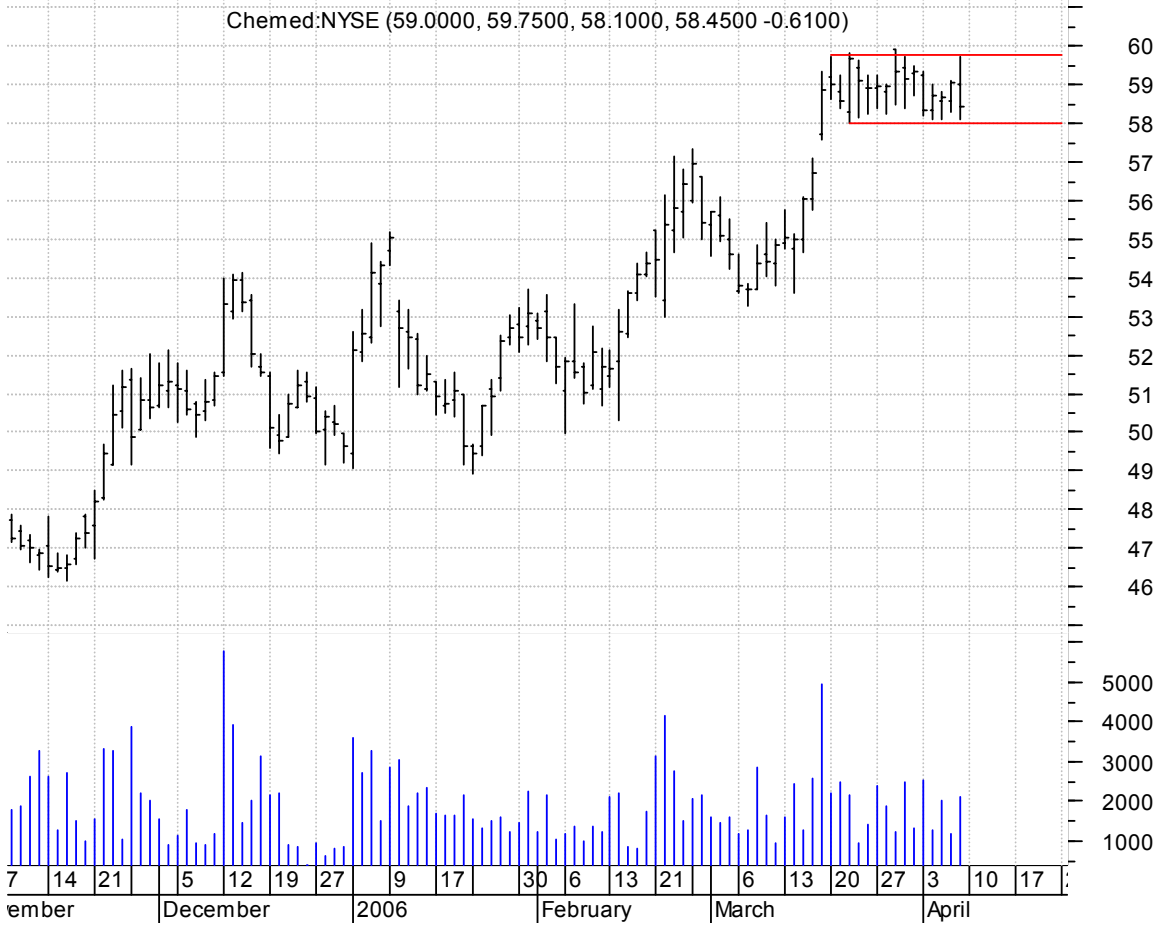
**ARRS symm. tri. / buy on upside brkout on increased volume**



**BECN symm. tri. / buy on upside brkout on increased volume**



**CHE rectangle preceded by 'pole-like' move / buy on upside brkout on increased volume**



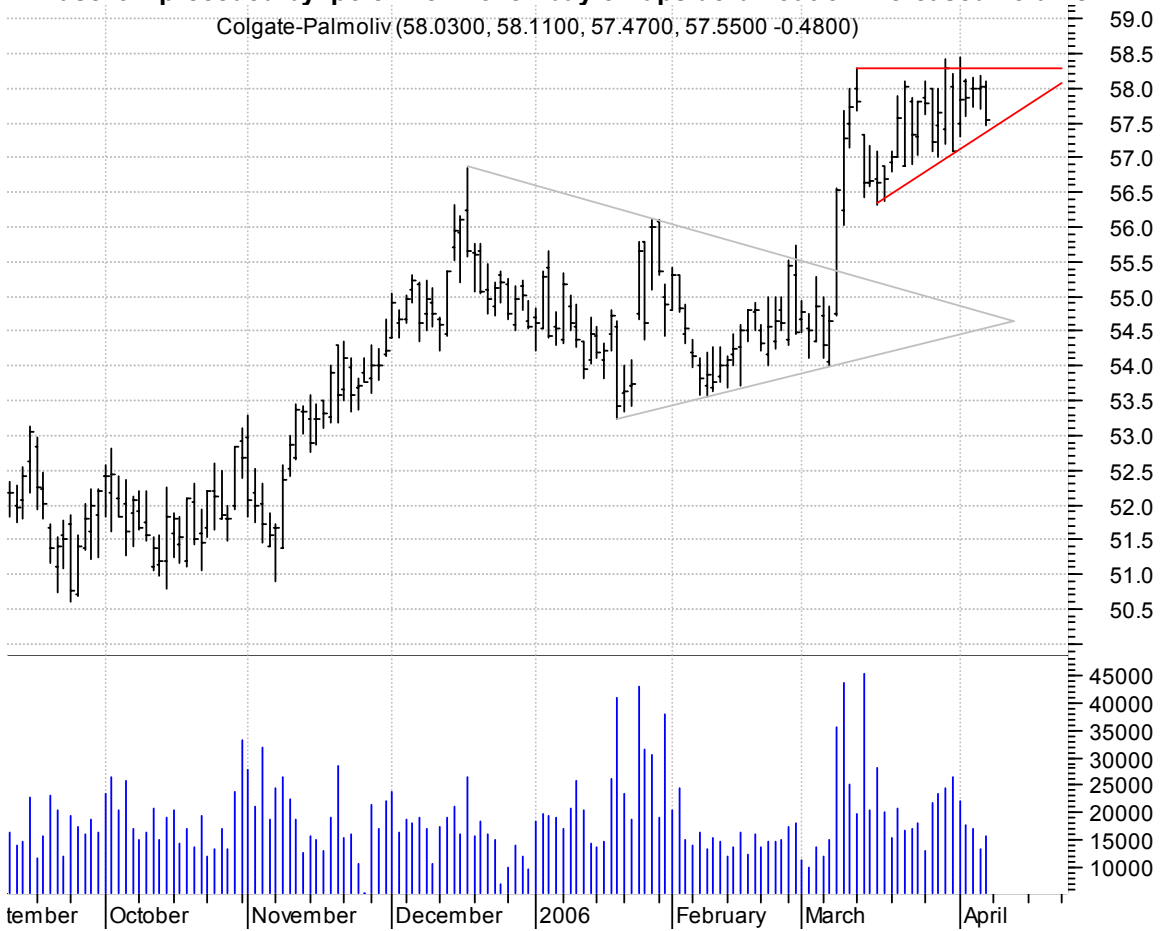
**CHRS bullish flag / buy on upside brkout on increased volume**

Charming Shoppes (14.8300, 14.9200, 14.4900, 14.6300 -0.1200)



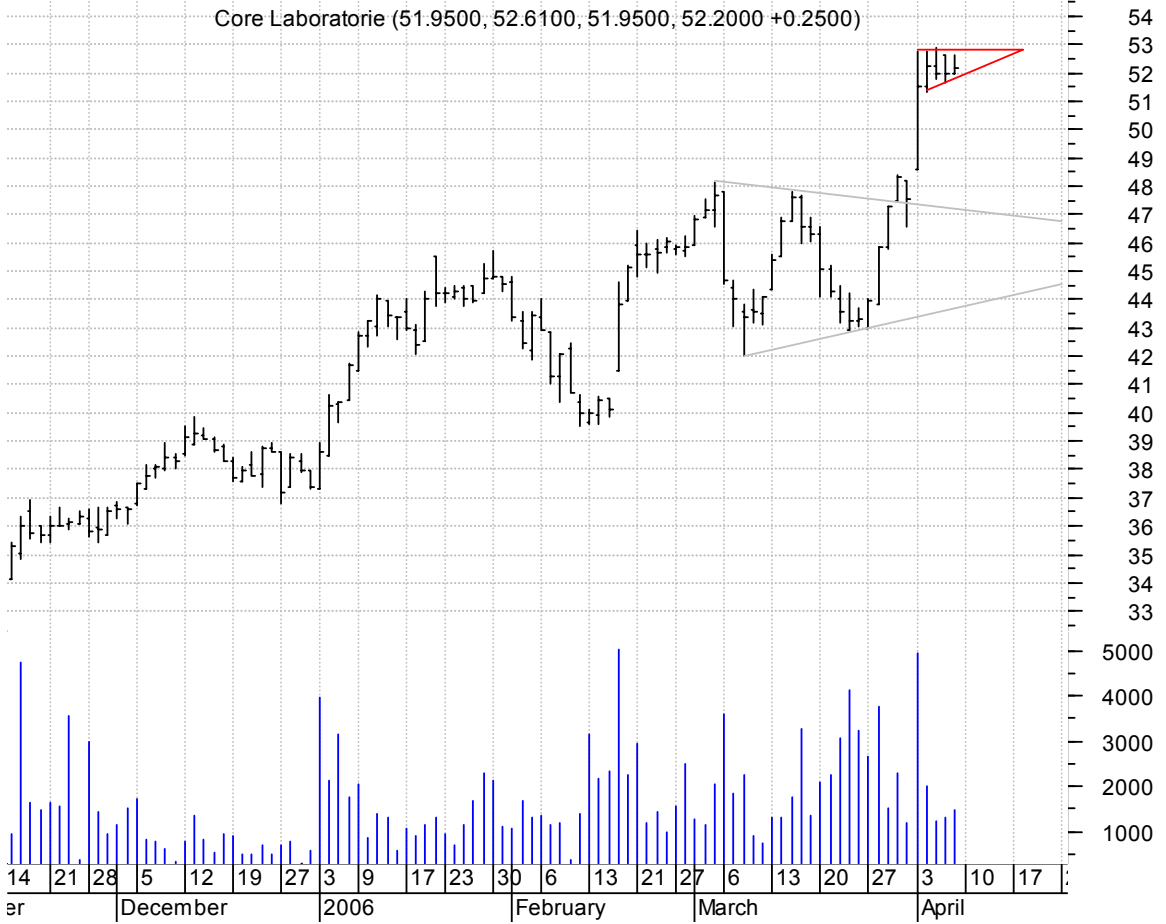
**CL asc. tri. preceded by 'pole-like' move / buy on upside brkout on increased volume**

Colgate-Palmoliv (58.0300, 58.1100, 57.4700, 57.5500 -0.4800)



**CLB asc. tri. preceded by 'pole-like' move / buy on upside brkout on increased volume**

Core Laboratorie (51.9500, 52.6100, 51.9500, 52.2000 +0.2500)

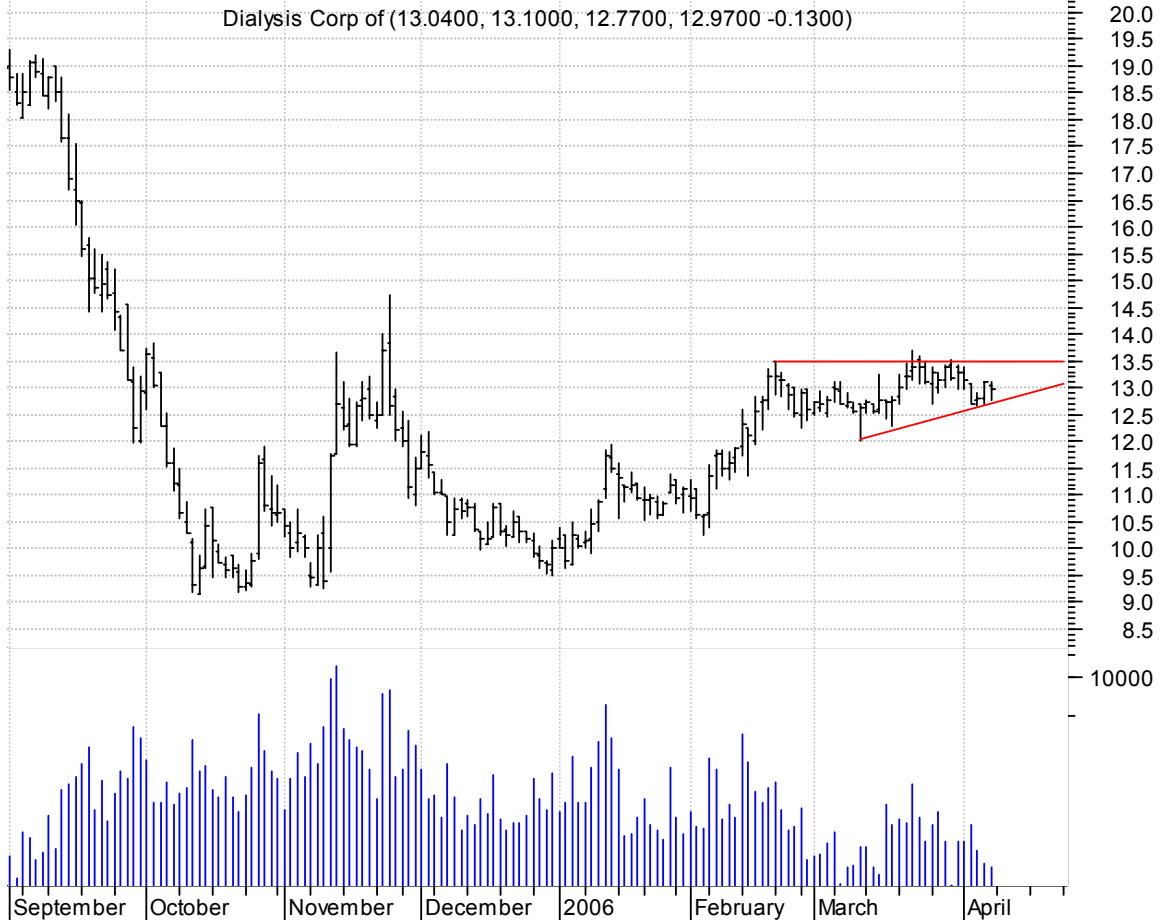


**CRYP symm. tri. / buy on upside brkout thru dotted red line on increased volume**

Cryptologic Inc: (26.8500, 27.0600, 25.8900, 26.1600 -0.4400)



**DCAI asc, tri. / buy on upside brkout on increased volume**

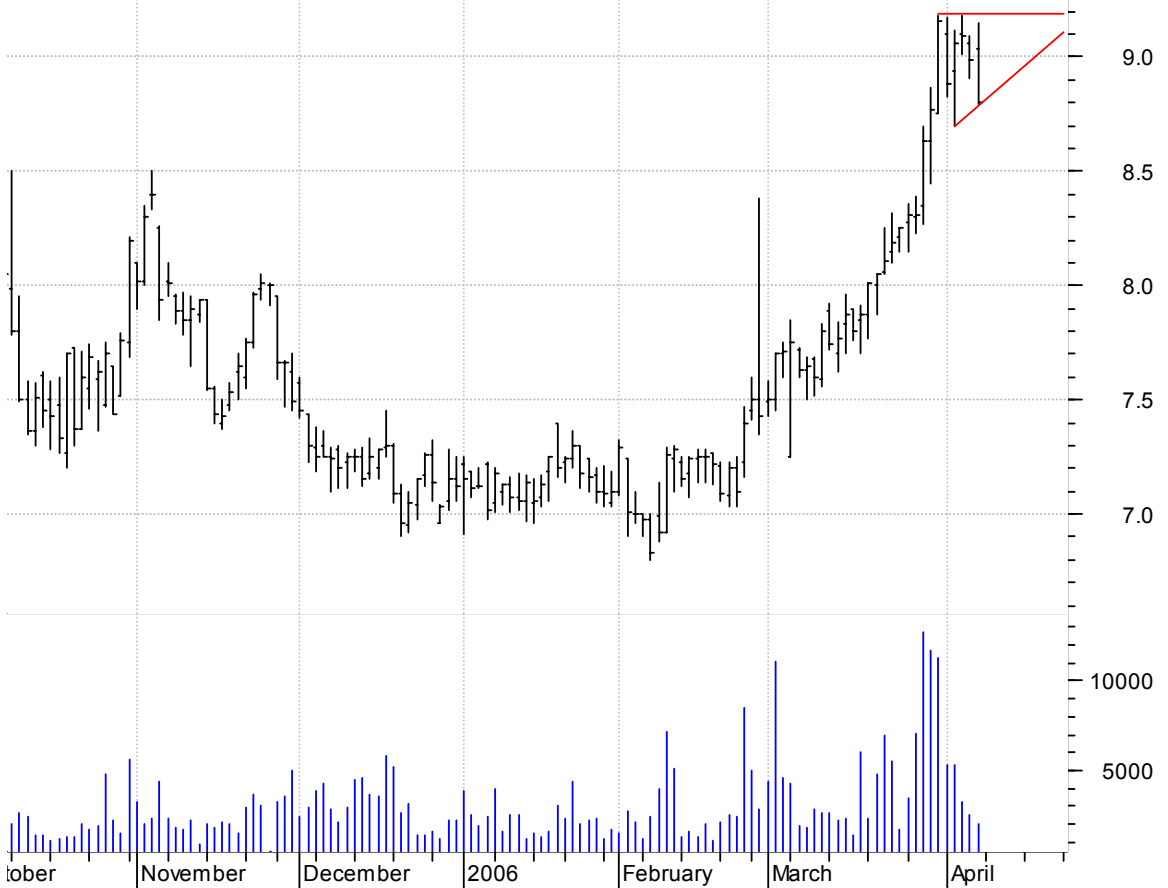


**ESCH asc, tri. preceded by 'pole-like' move / buy on upside brkout on increased volume**



**EVC asc. tri. preceded by 'pole-like' move / buy on upside brkout on increased volume**

Entravision Comm (9.0400, 9.1500, 8.7900, 8.8000 -0.1900)



**FNSR bullish flagging / buy on upside brkout on increased volume**

Finisar Cp:OTC (4.9000; 4.9900; 4.7100; 4.7700 -0.1400)



**GCOM symm. tri. / buy on upside brkout on increased volume**

Globecomm System (7.2000, 7.2500, 7.1000, 7.2100 -0.0100)



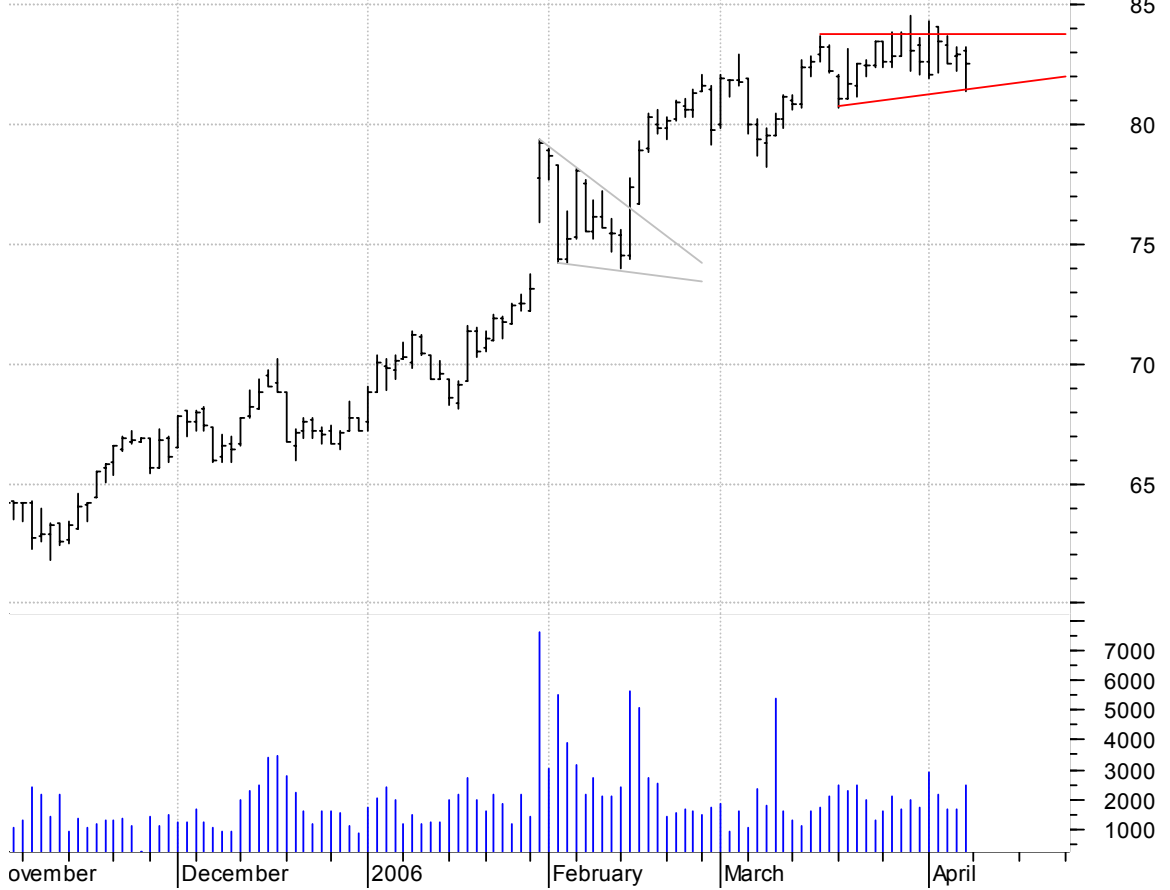
**HPQ symm. tri. / buy on upside brkout on increased volume**

Hewlett-Packard (34.1100, 34.1700, 33.3300, 33.3700 -0.7300)



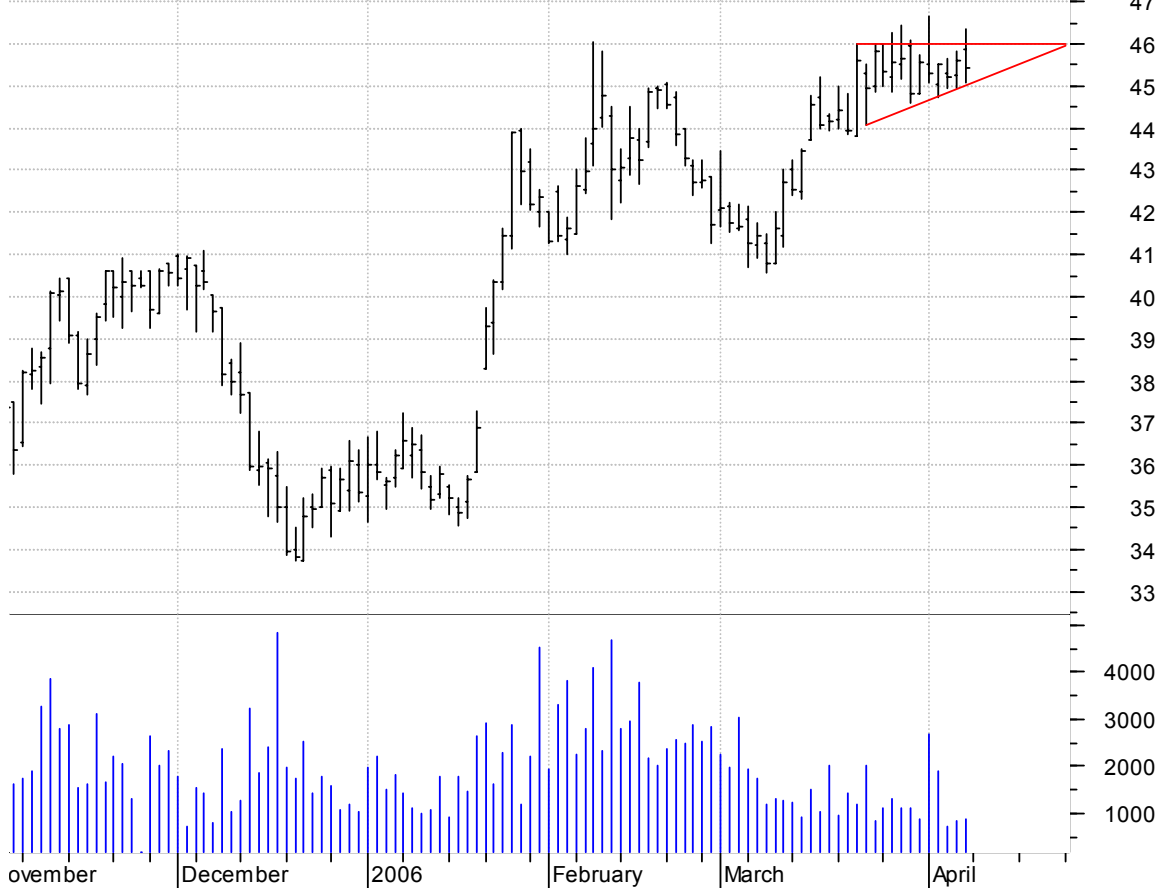
**HSC sloppy asc. tri. / buy on upside brkout on increased volume**

Harsco Corp:NYSE (83.1200, 83.2200, 81.4000, 82.5600 -0.4100)



**HBG sloppy asc. tri. / buy on upside brkout on increased volume**

Hub Group Inc CI (45.8900, 46.3700, 45.0900, 45.4300 -0.1700)





**HYTM sloppy falling wedge preceded by 'pole-like' move / buy on upside brkout on increased volume**

HYTHIAM INC:OTC (8.4900, 8.8000, 8.3400, 8.7400 +0.4000)



**ICTG symm. tri. / buy on upside brkout on increased volume**

ICT Group Inc:OT (24.5000, 25.5000, 24.5000, 25.2000 +0.4900)



**ININ sloppy asc. tri. / buy on upside brkout on increased volume**

Interactive Inte (9.8000, 9.9500, 9.6500, 9.6700 -0.0500)



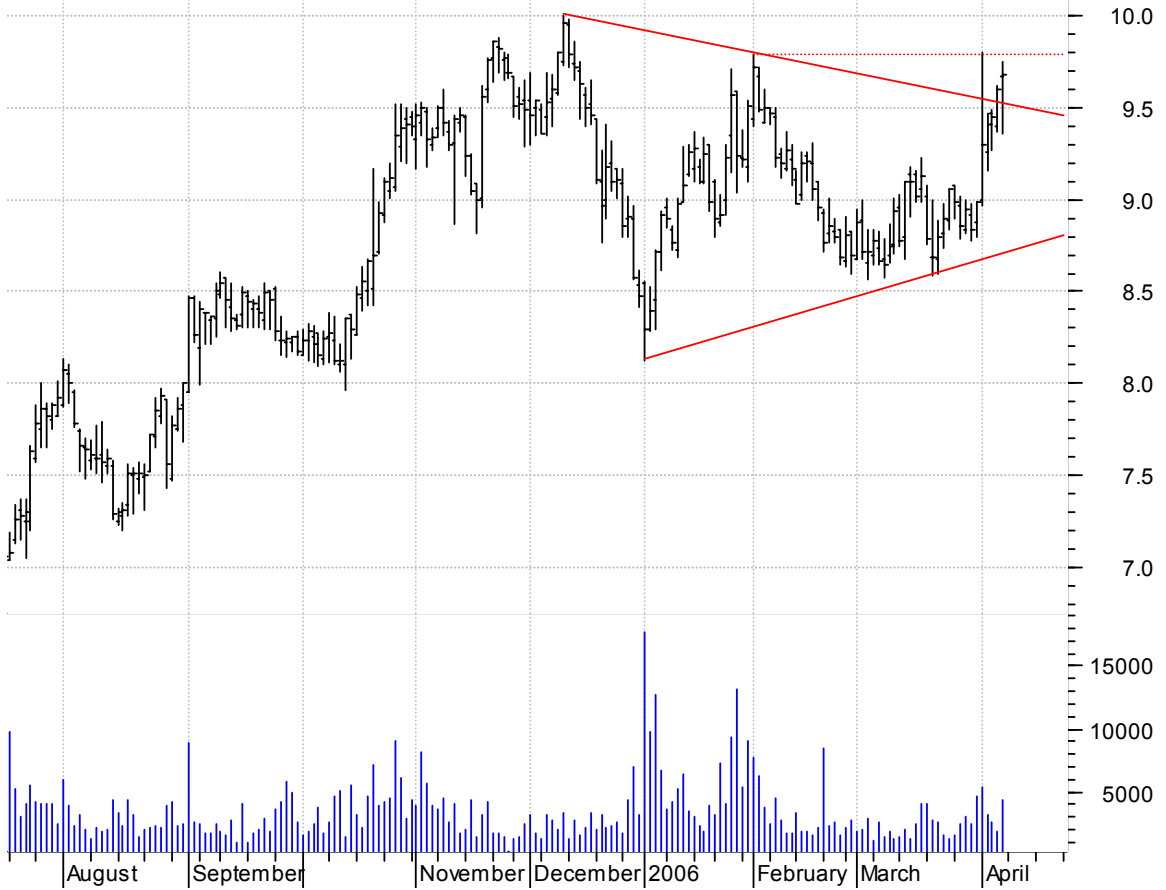
**IR symm. tri. / buy on upside brkout on increased volume**

Ingersoll-Rand C (43.2500, 43.5000, 42.2800, 42.7900 -0.2100)



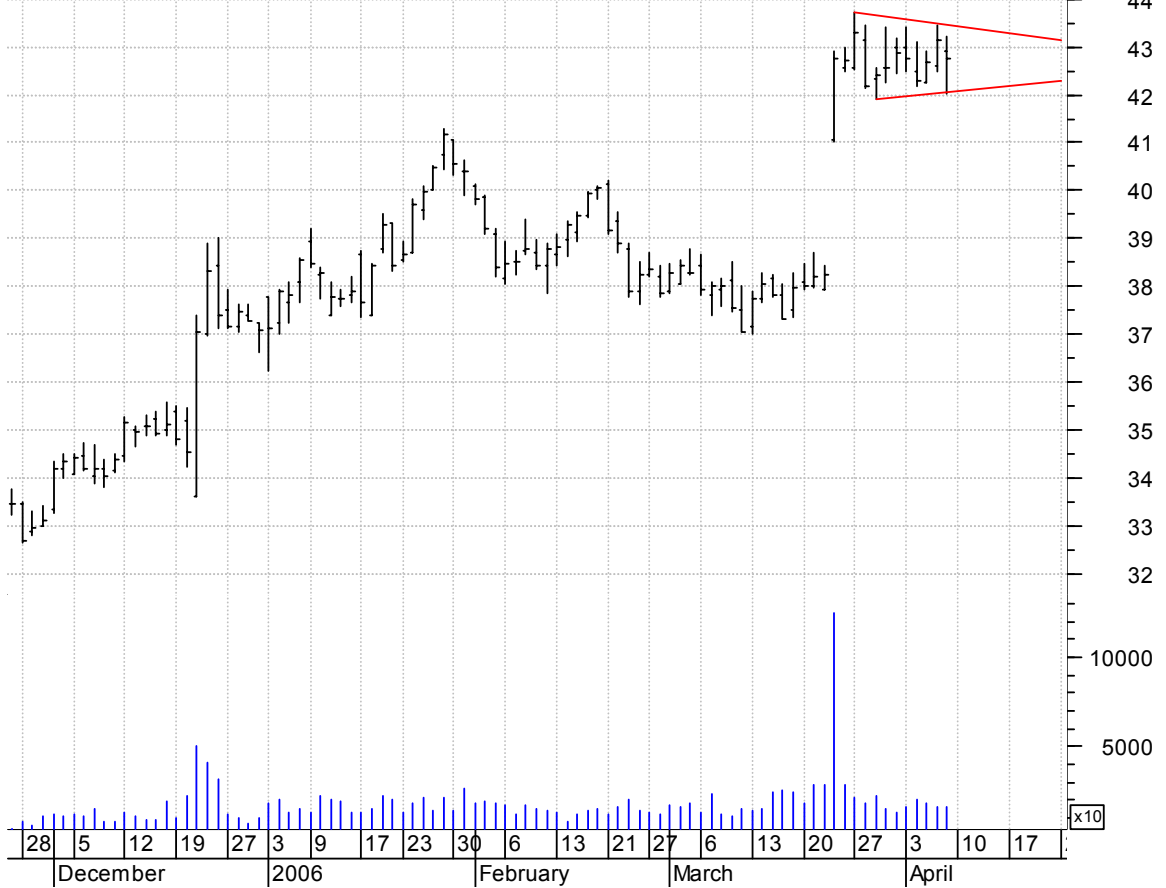
**IWOV symm. tri. / buy on upside brkout thru dotted red line on increased volume**

Interwoven Inc:O (9.6700, 9.7500, 9.3600, 9.6800 +0.0800)



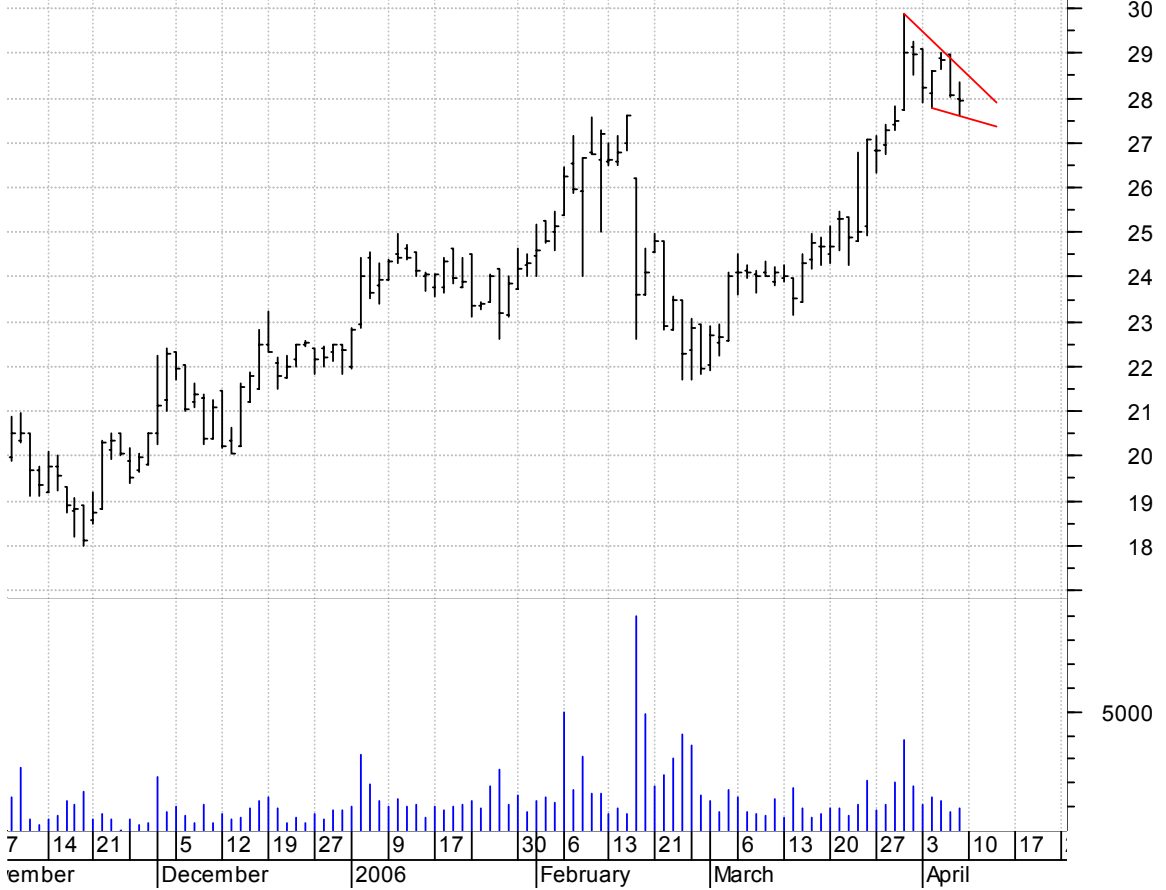
**JBL symm. tri. preceded by 'pole-like' move / buy on upside brkout on increased volume**

Jabil Circuit In (42.8900, 43.2300, 42.0400, 42.7500 -0.3900)



**LDSH falling wedge / buy on upside brkout on increased volume**

Ladish Co:OTC (28.0000, 28.3600, 27.6100, 27.9400 -0.1300)



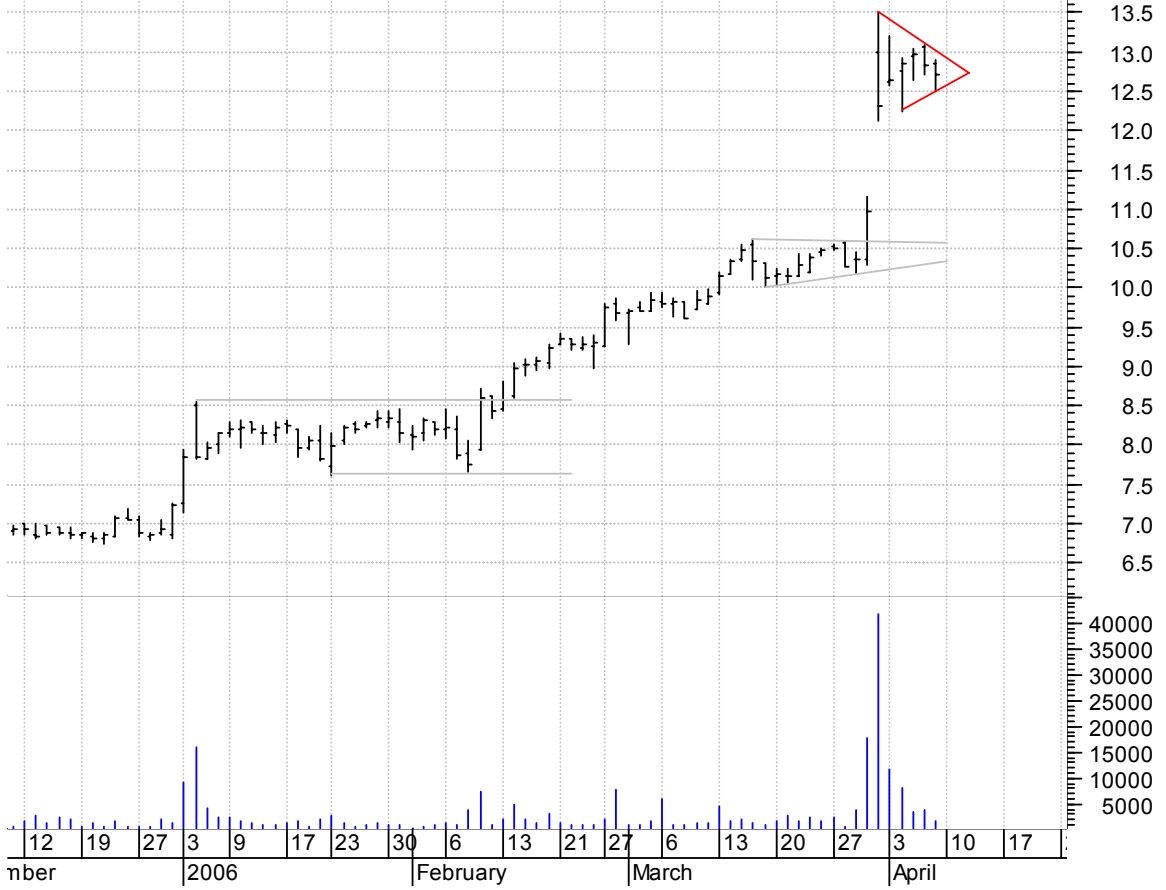
**LRW symm. tri. / buy on upside brkout on increased volume**

Labor Ready Inc: (24.9200, 25.1500, 24.8100, 25.0100 +0.1100)



**MERX bull pennant / buy on upside brkout on increased volume**

Merix Corp:OTC (12.8500, 12.8900, 12.5000, 12.7100 -0.1200)



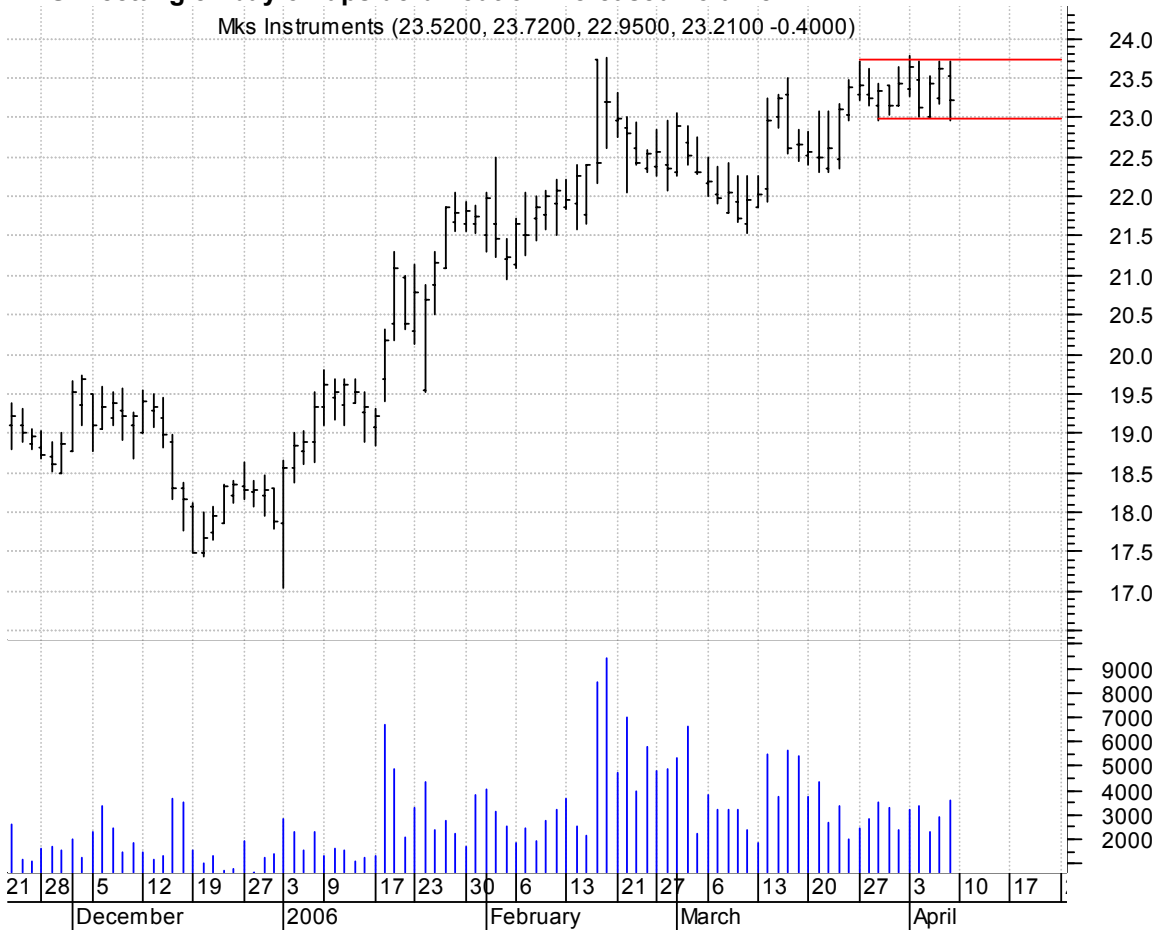
**MHO symm. tri. / buy on upside brkout on increased volume**

MI Homes Inc:NY (47.0000, 47.6100, 46.5800, 47.2500 -0.0300)



### MKSI rectangle / buy on upside brkout on increased volume

Mks Instruments (23.5200, 23.7200, 22.9500, 23.2100 -0.4000)



### MPS symm. tri. / buy on upside brkout on increased volume

MPS Group Inc:NY (15.8400, 16.1600, 15.6100, 16.1600 +0.3900)



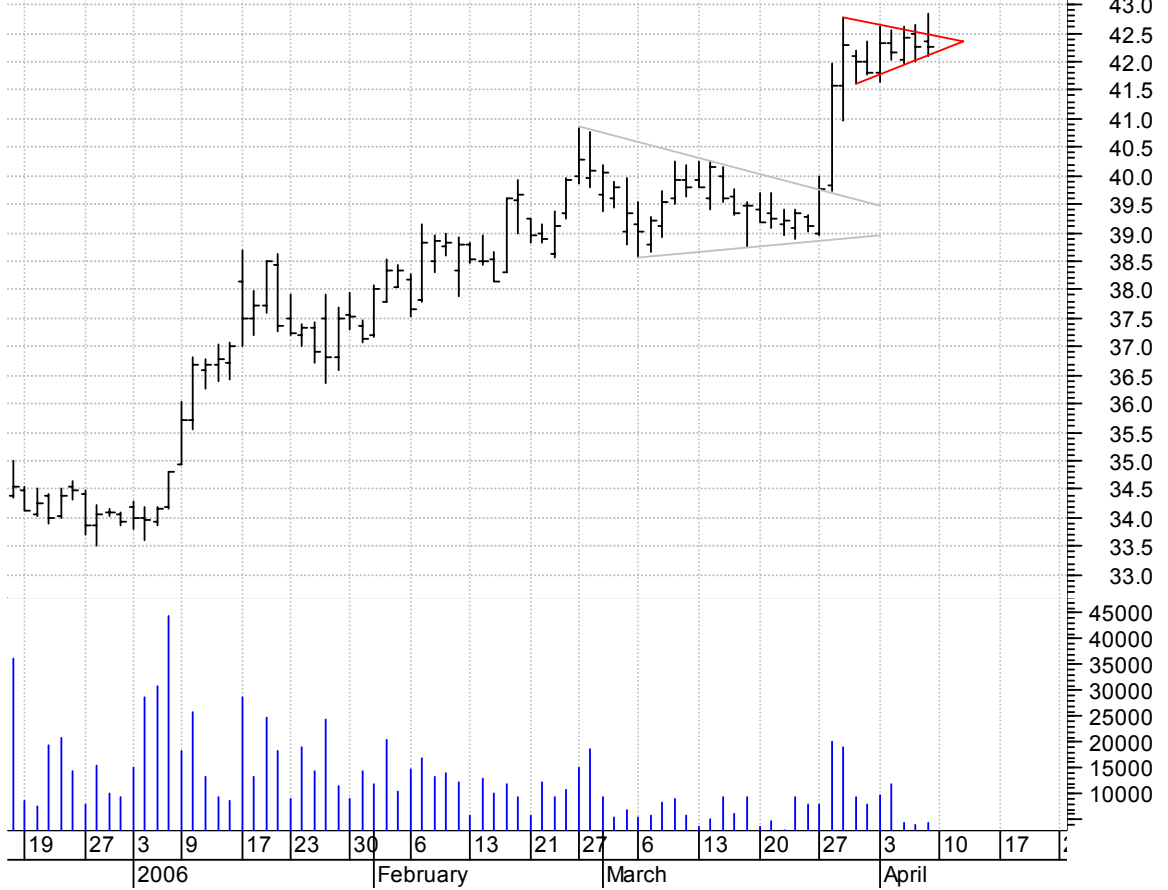
**MTW asc. tri. preceded by 'pole-like' move / buy on upside brkout on increased volume**

Manitowoc Inc:NY (95.2800, 96.0000, 92.7000, 93.3500 -1.6300)



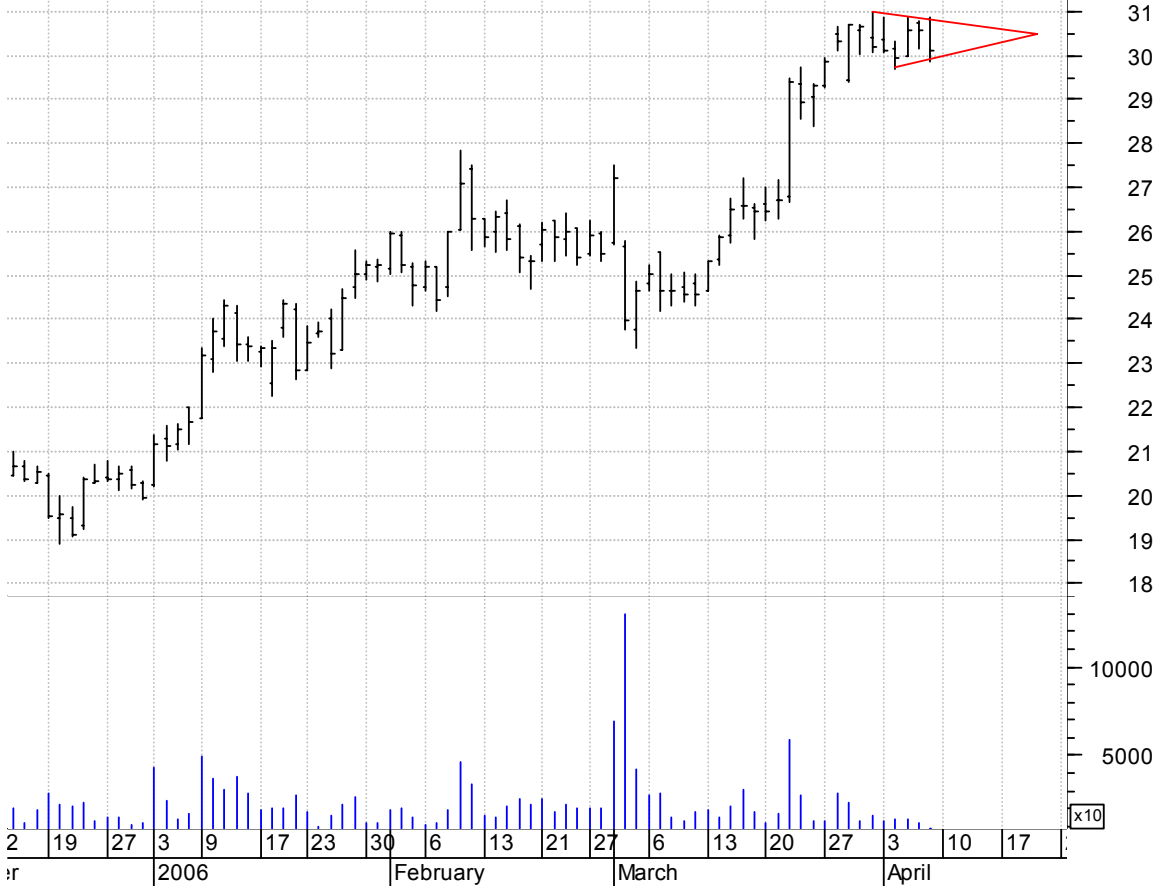
**NCR symm. tri. preceded by 'pole-like' move / buy on upside brkout on increased volume**

NCR Inc:NYSE (42.3500, 42.8300, 42.1000, 42.2500 -0.0200)



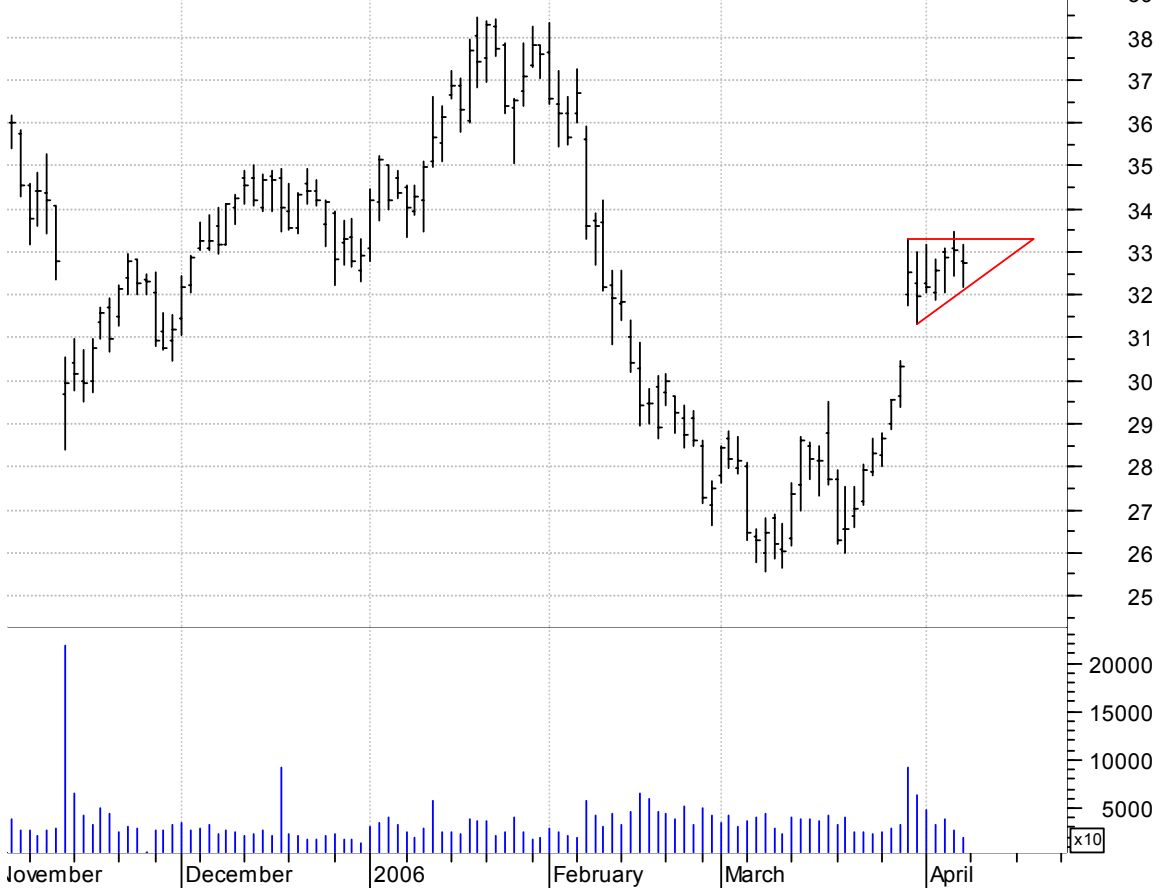
**OVTI symm. tri. / buy on upside breakout on increased volume**

OmniVision Techn (30.8300, 30.8800, 29.8500, 30.1000 -0.4900)



**PTEN asc. tri. preceded by 'pole-like' move / buy on upside breakout on increased volume**

Patterson-UTI En (32.8000, 33.1900, 32.1700, 32.7600 -0.2800)





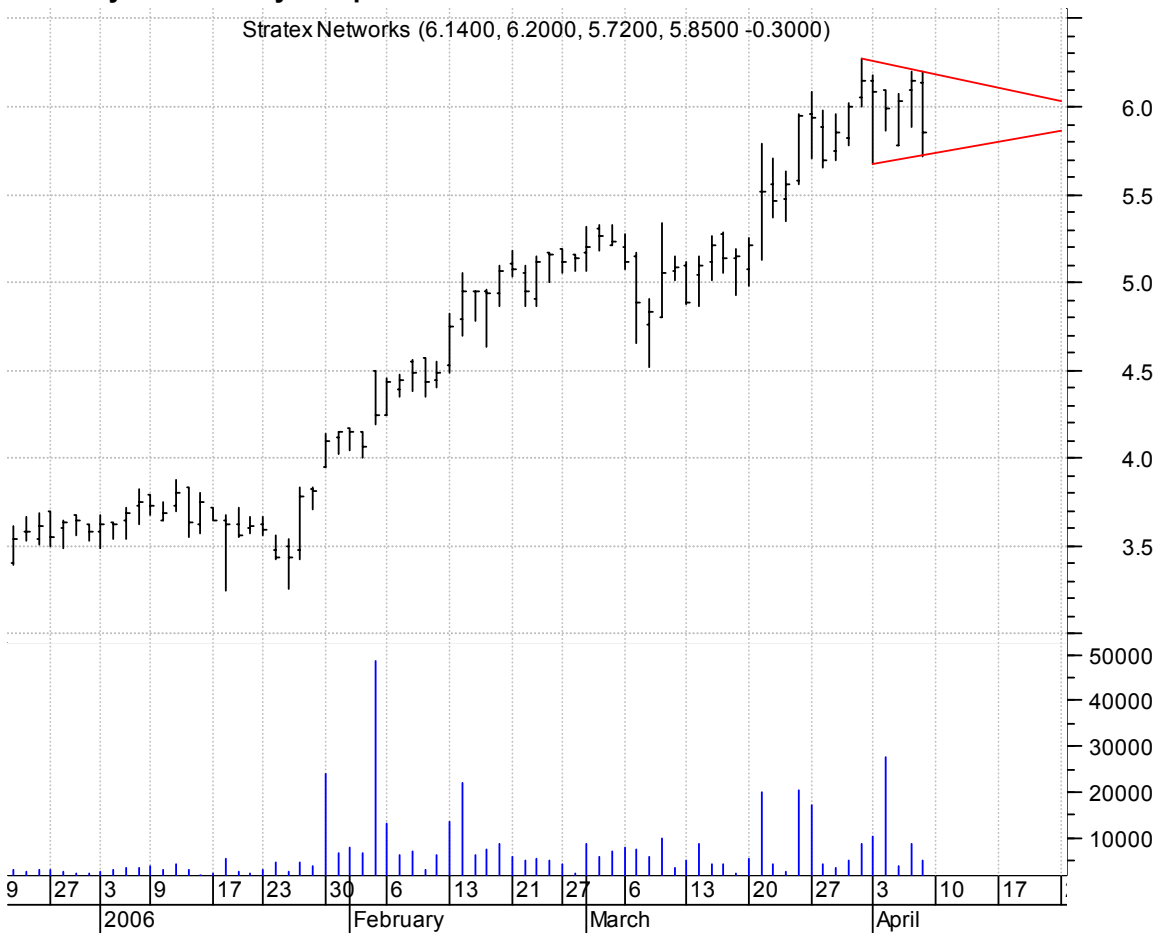
**RMD falling wedge preceded by 'pole-like' move / buy on upside brkout on increased volume**

Resmed Inc:NYSE (42.9000, 43.7800, 42.5200, 42.9600 -0.2200)



**STXN symm. tri. / buy on upside brkout on increased volume**

Stratex Networks (6.1400, 6.2000, 5.7200, 5.8500 -0.3000)



**TI symm. tri. / buy on upside brkout on increased volume**

TELECOMITALIA:N (29.5400, 29.6300, 29.1200, 29.2200 -0.4500)

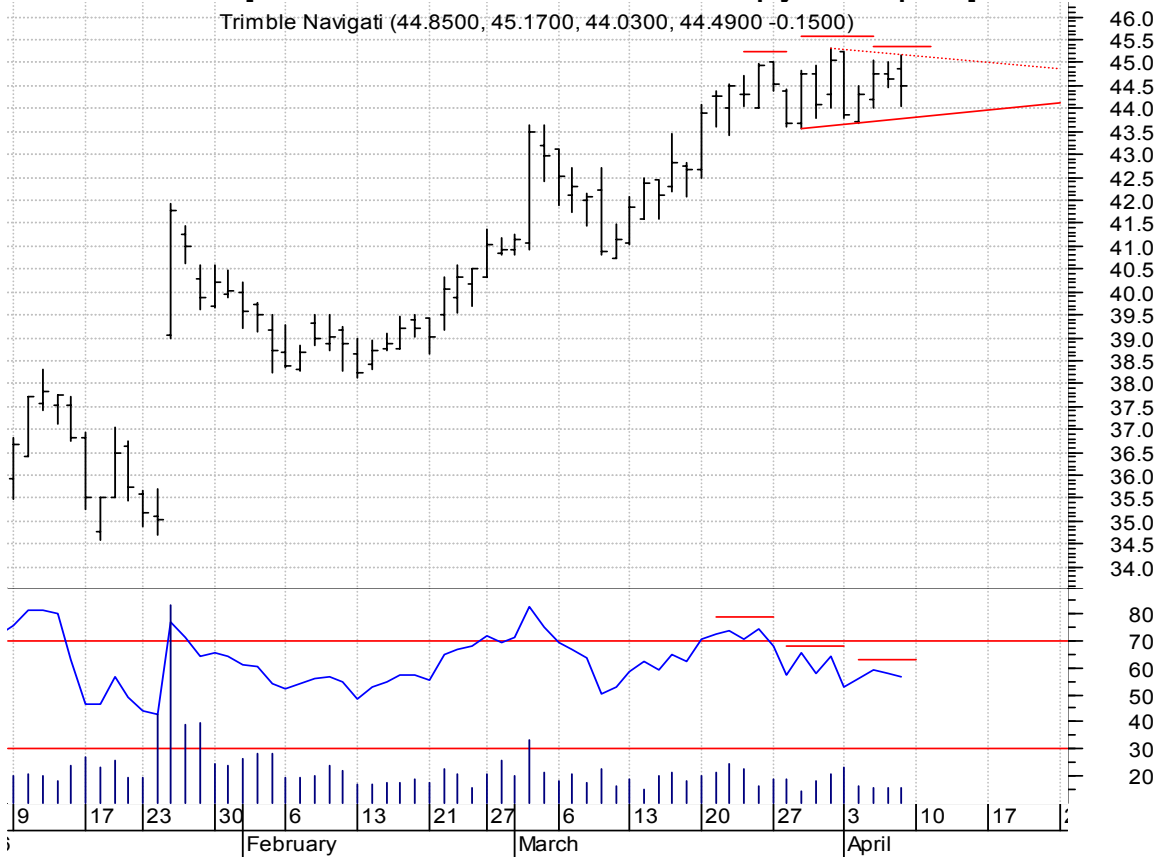


**TRA asc. tri. / buy on upside brkout on increased volume**

Terra Industries (7.2400, 7.3200, 7.1000, 7.1700 -0.0500)



**TRMB h. & sh. / 1) sell on downside brkout on increased volume or  
 2) buy on upside brkout thru dotted red line on increased volume  
 [h. & sh. failures often times brkout sharply to the upside]**



**VTS small symm. tri. at the brkout point of a larger symm. tri. / buy on upside brkout of both on increased volume**



**WITS rectangle / buy on upside breakout on increased volume**



**ZOLT symm. tri. / buy on upside breakout on increased volume**



**chartpatterns.com**  
Chart Pattern Analysis for Timing the Markets

[KMatras@aol.com](mailto:KMatras@aol.com)