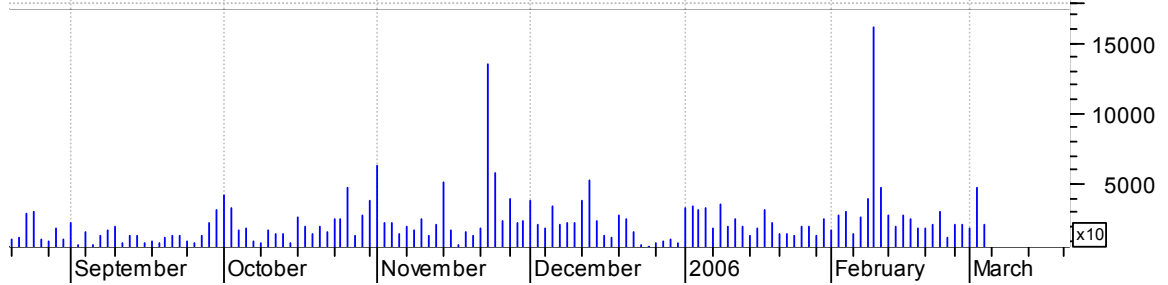


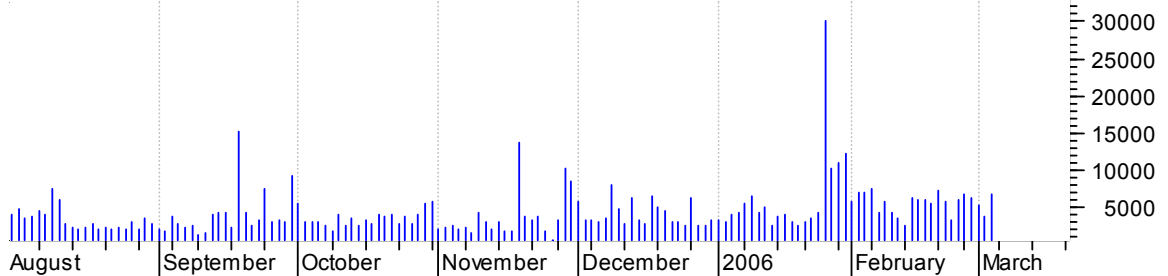
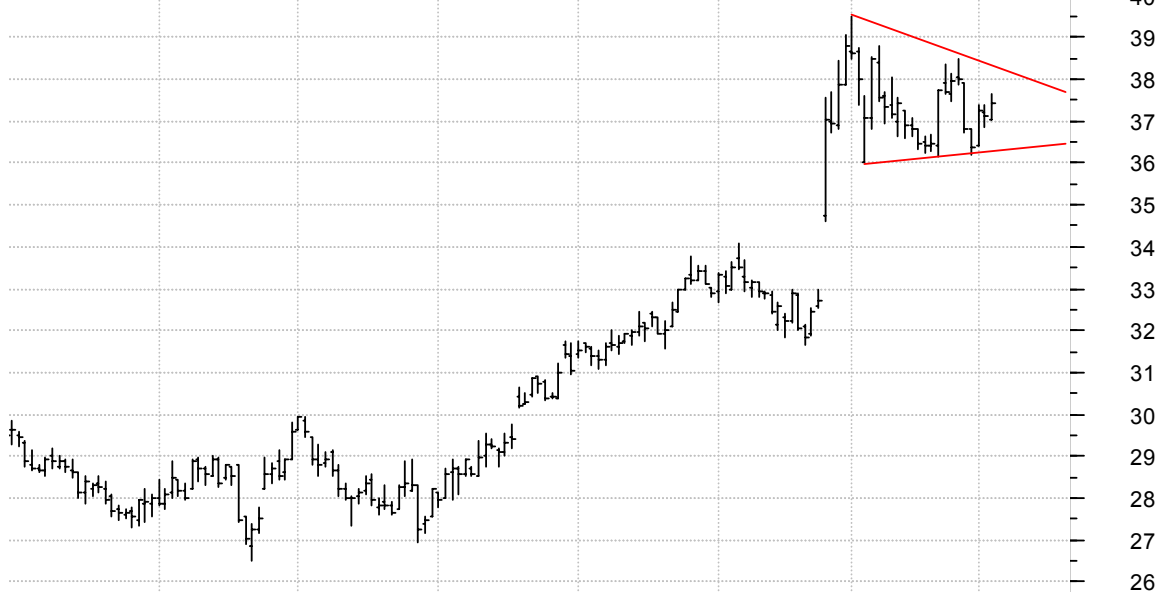
AKAM symm. tri. preceded by 'pole-like' move / buy on upside brkout on increased volume

Akamai Technolog (26.3000, 26.3400, 25.7800, 26.1100 +0.0200)



ARG symm. tri. preceded by 'pole-like' move / buy on upside brkout on increased volume

Airgas Inc:NYSE (37.0400, 37.6600, 37.0400, 37.4100 +0.2700)



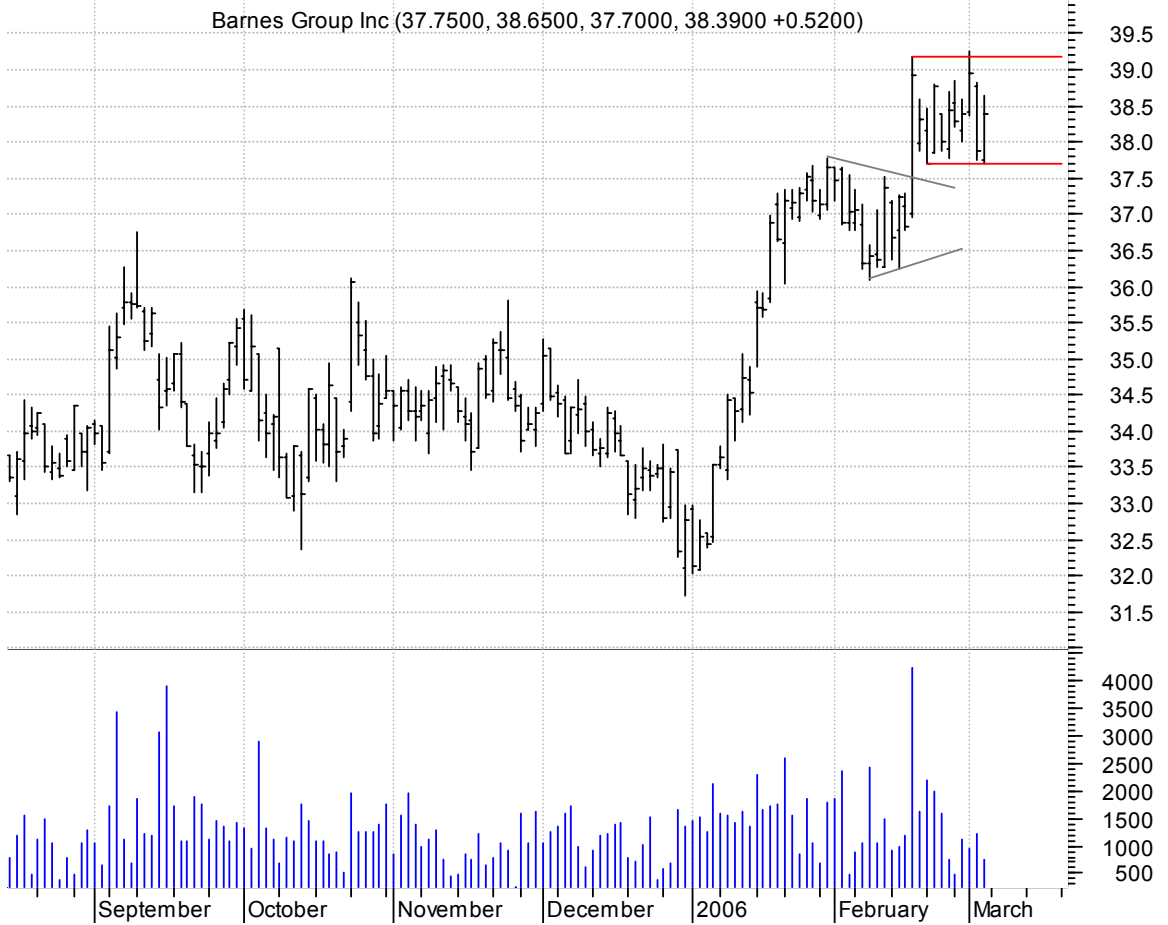
AXE asc. tri. / buy on upside breakout on increased volume

Anixter Intl:NYS (45.8000, 46.7700, 45.2300, 45.6300 -0.3700)



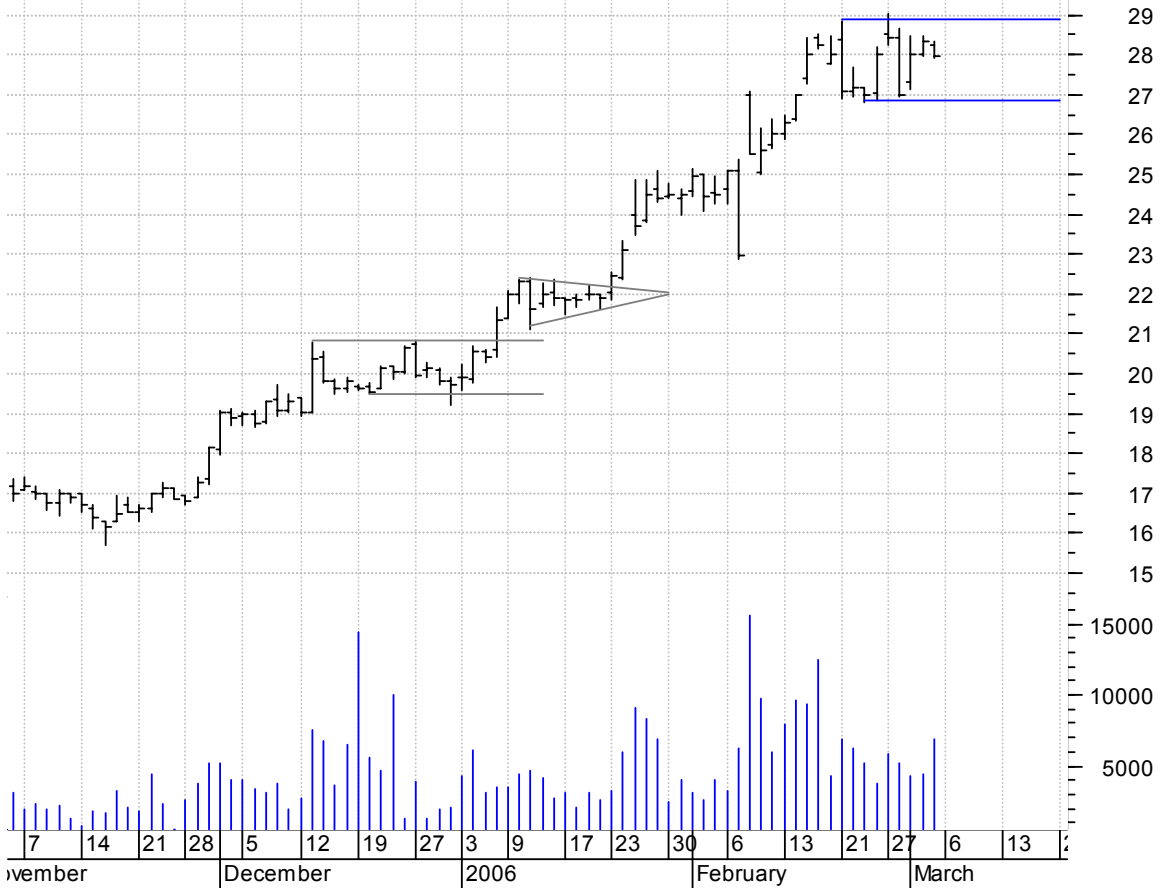
B rectangle / buy on upside breakout on increased volume

Barnes Group Inc (37.7500, 38.6500, 37.7000, 38.3900 +0.5200)



BGC rectangle / buy on upside breakout on larger than normal volume

General Cable Co (28.2600, 28.3100, 27.9000, 27.9700 -0.3800)



CCI symm. tri. / buy on upside breakout on increased volume

Crown Castle Int (30.8300, 31.2300, 30.5200, 30.7500 -0.0800)



CRUS symm. tri. / buy on upside brkout on increased volume



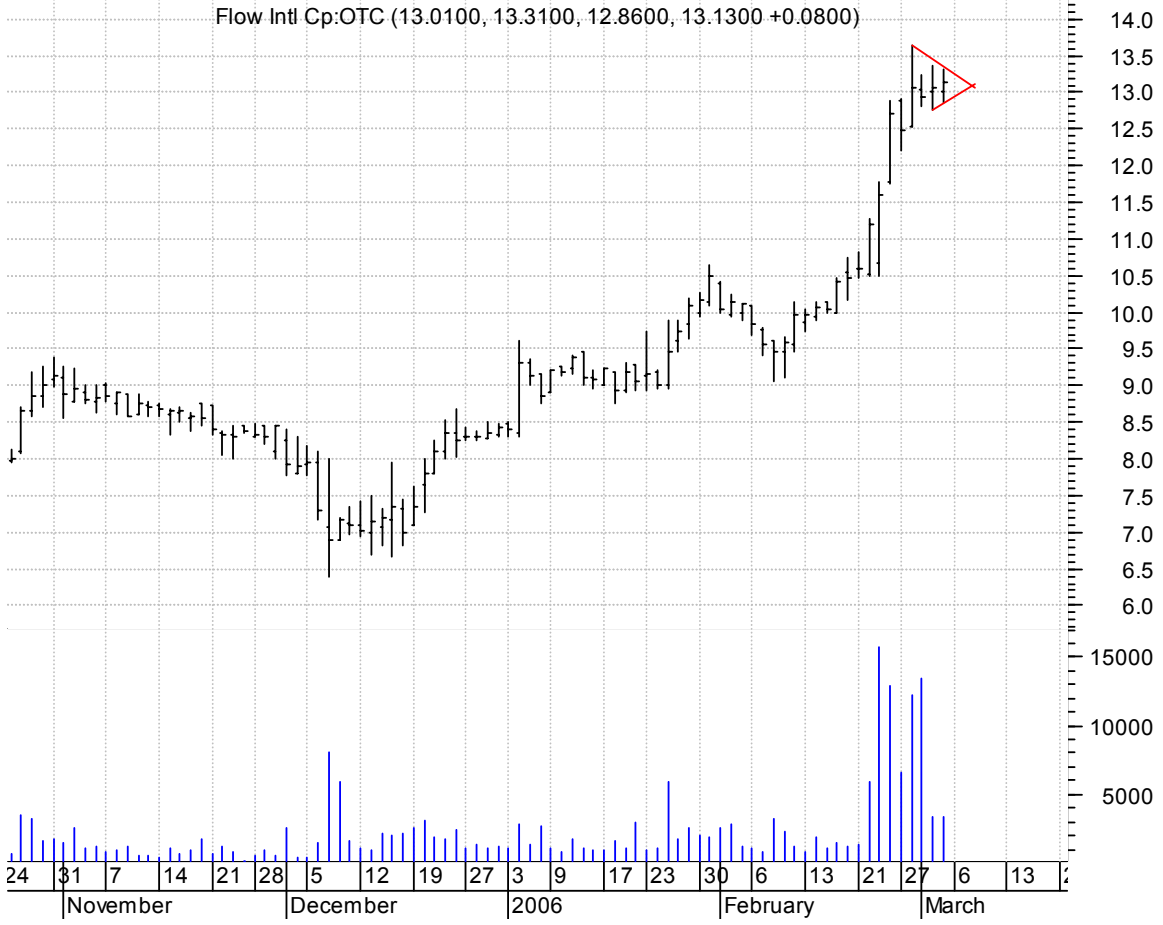
DTV sloppy asc. tri. preceded by 'pole-like' move / buy on upside brkout on increased volume



EMR sloppy symm. tri. preceded by 'pole-like' move / buy on upside brkout on increased volume

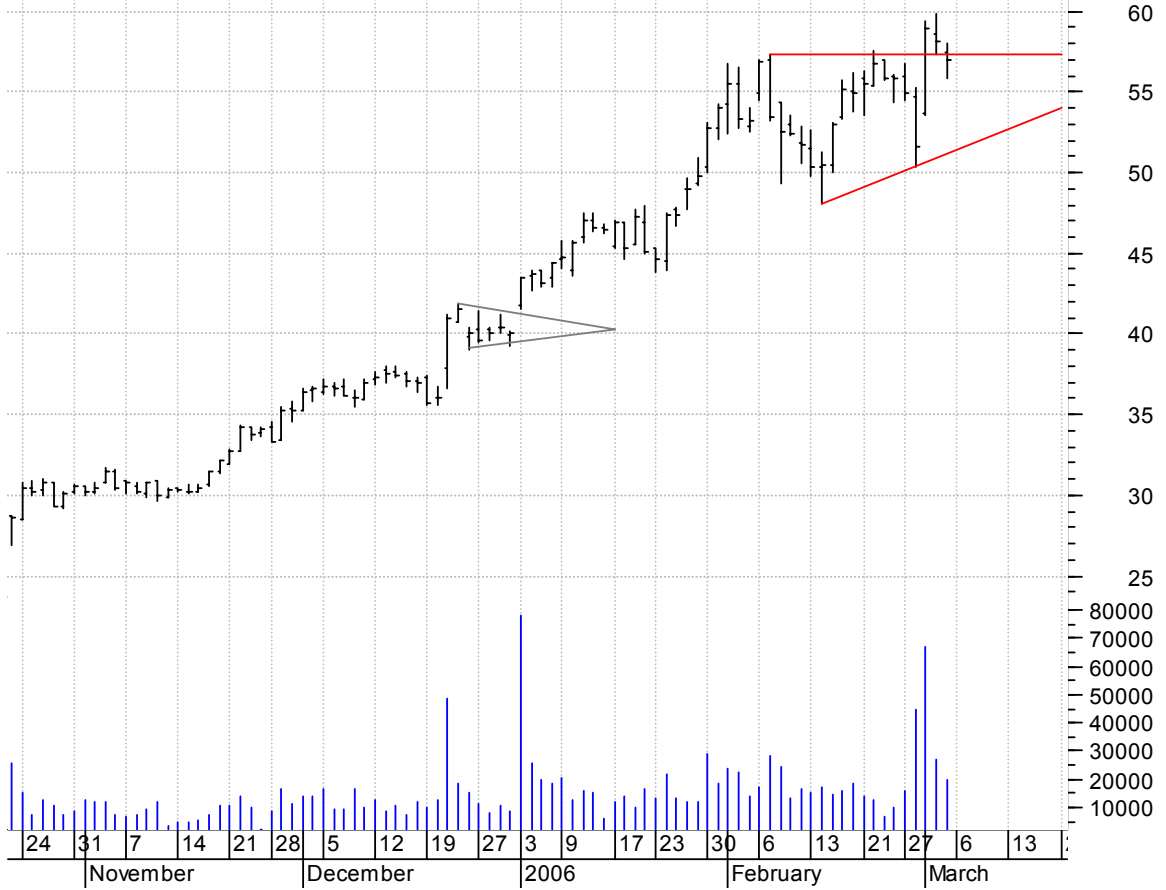


FLOW bull pennant / buy on upside brkout on increased volume



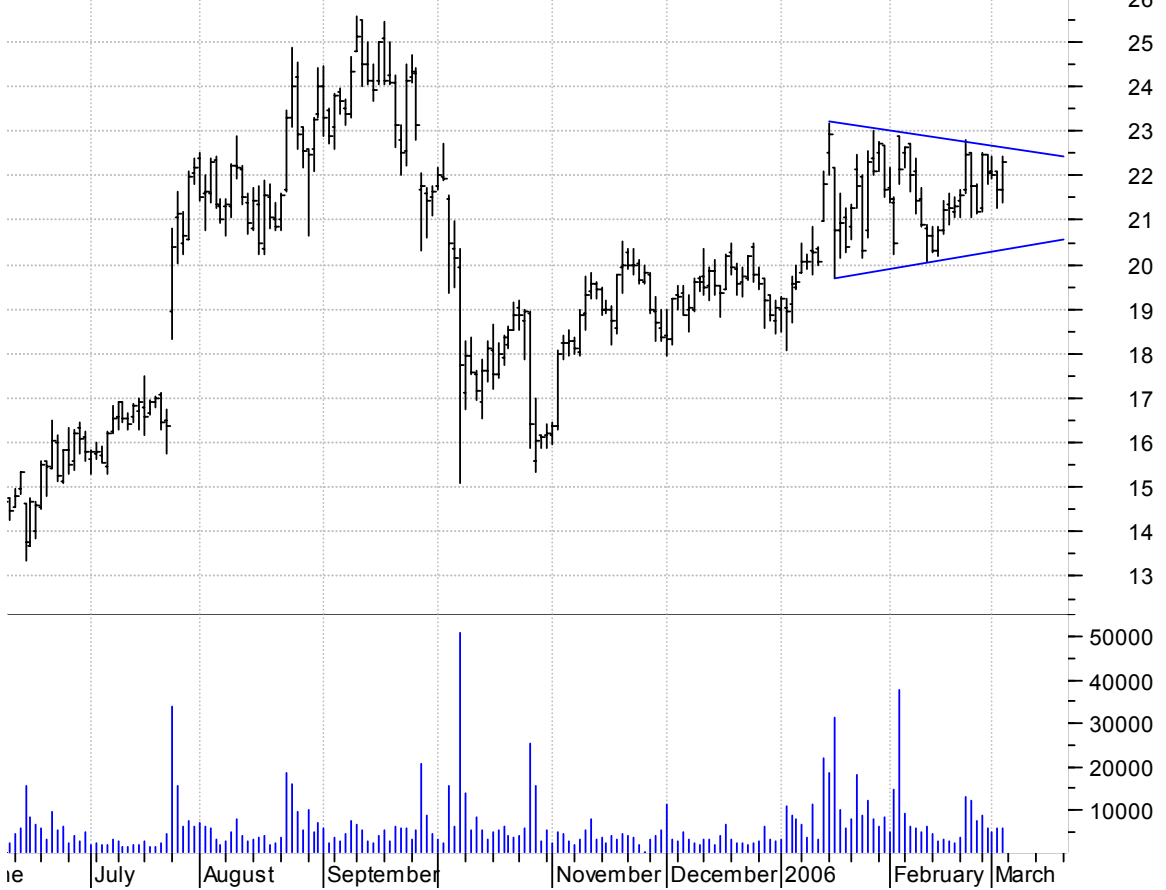
JOYG asc. tri. and retracement / buy on upside breakout once again on larger than normal volume

Joy Global:OTC (57.4700, 58.0100, 55.8800, 57.0200 -1.1000)



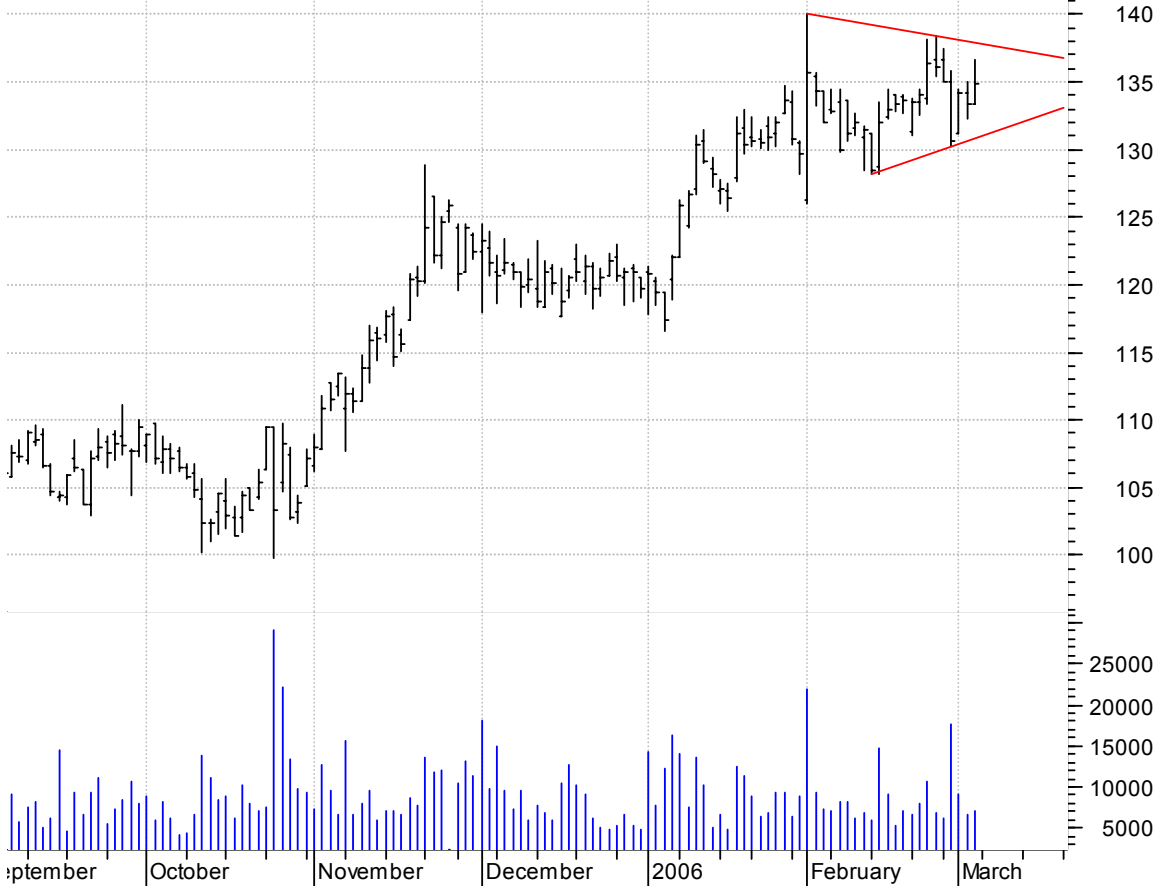
LIFC symm. tri. / buy on upside breakout on increased volume

Lifecell Cp:OTC (21.6700, 22.4400, 21.4100, 22.3200 +0.6500)



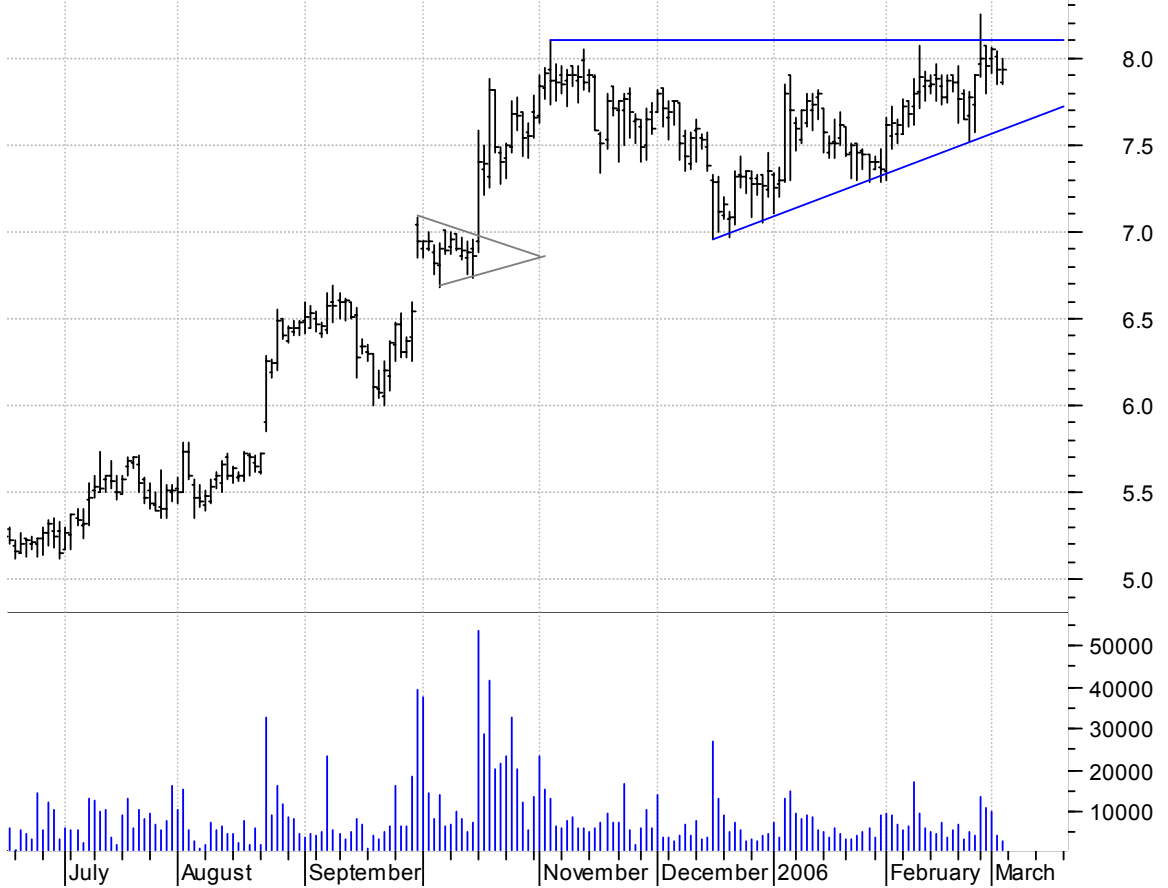
LM symm. tri. / buy on upside brkout on increased volume

Legg Mason Inc:N (133.330, 136.650, 133.290, 134.800 +1.4700)



LWSN symm. tri. / buy on upside brkout on increased volume

LAWSON SOFTWARE (7.8600, 8.0000, 7.8500, 7.9300 +0.0000)



MNST symm. tri. / buy on upside brkout on increased volume



MOLX asc. tri. preceded by 'pole-like' move / buy on upside brkout on increased volume



MSTR sloppy asc. tri. / buy on upside brkout on increased volume

Microstrategy In (97.9600, 100.800, 97.3600, 99.9800 +1.5300)



NTES bull pennant / buy on upside brkout on increased volume

Netease.com Inc (87.6500, 87.7400, 86.0200, 86.3700 -1.6500)



OII symm. tri. / buy on upside breakout on increased volume

Oceanering Intl (55.9100, 57.1900, 55.9100, 56.3800 +0.3600)

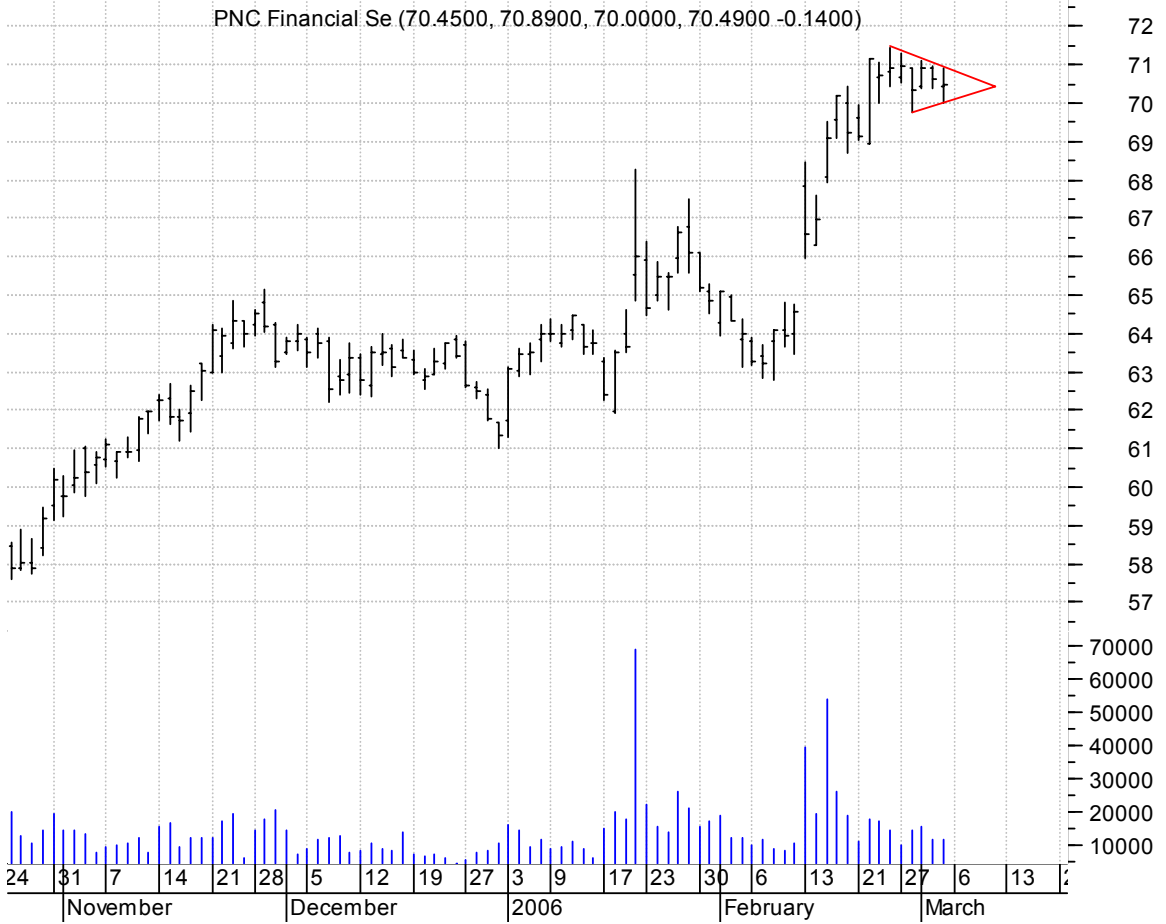


OPLK symm. tri. / buy on upside breakout thru dotted red line on larger than normal volume

OPLINK COMMUN IN (17.3000, 18.2000, 16.8700, 17.1500 -0.2200)



PNC symm. tri. preceded by 'pole-like' move / buy on upside brkout on increased volume



PPDI asc. tri. / buy on upside brkout on increased volume



PSTI symm. tri. / buy on upside brkout on increased volume

Per-se Tech Inc: (25.7300, 26.1400, 25.1700, 25.7100 -0.1800)



PSYS symm. tri. / buy on upside brkout on increased volume

PSYCHIATRIC SOLU (33.6000, 34.0200, 33.0500, 33.2500 -0.7600)



RADN symm. tri. / buy on upside breakout on increased volume

Radyne:OTC (14.0200, 14.4500, 13.9200, 14.2100 +0.2400)



RVSN symm. tri. / buy on upside breakout on increased volume

Radvision Ltd:OT (20.3000, 20.4900, 19.8800, 20.0500 -0.2900)



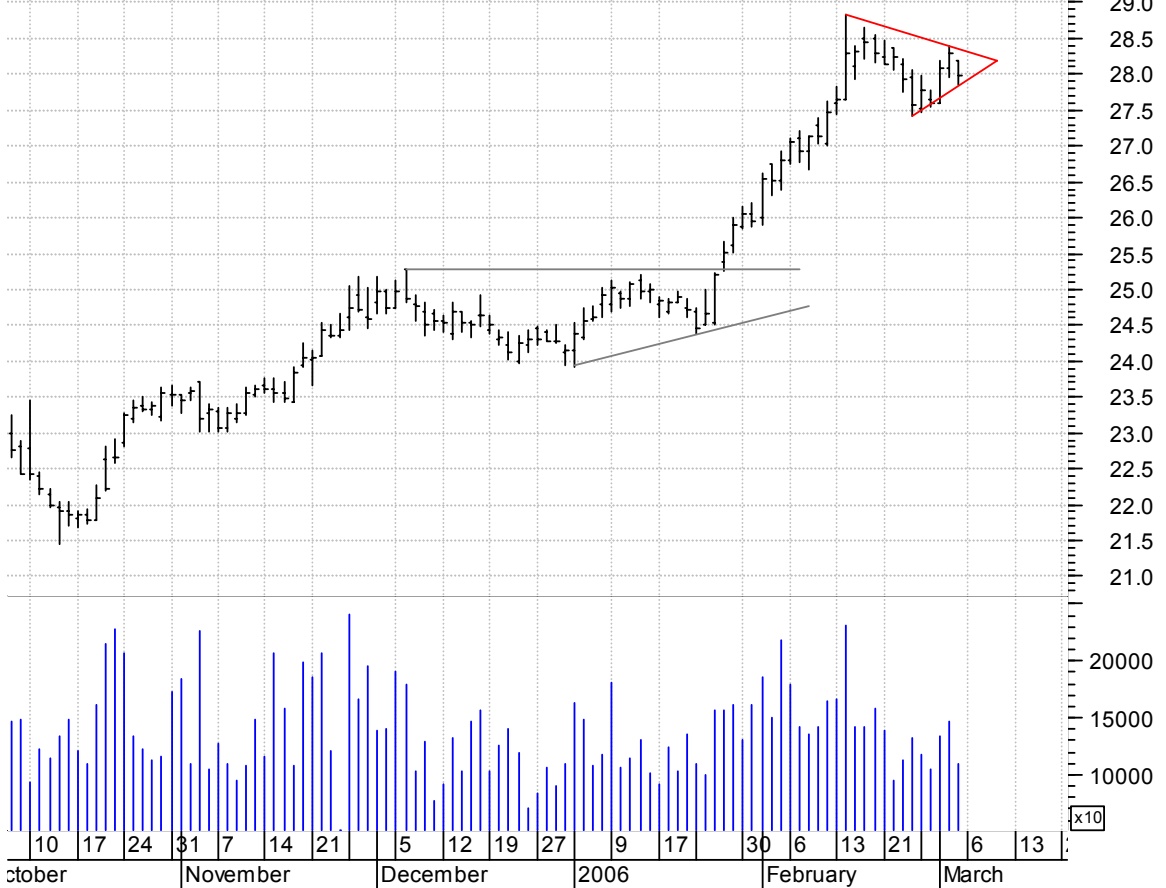
SMDI asc. tri. / buy on upside breakout on increased volume

Sirenza Microdev (7.9000, 7.9000, 7.5000, 7.7000 -0.2000)



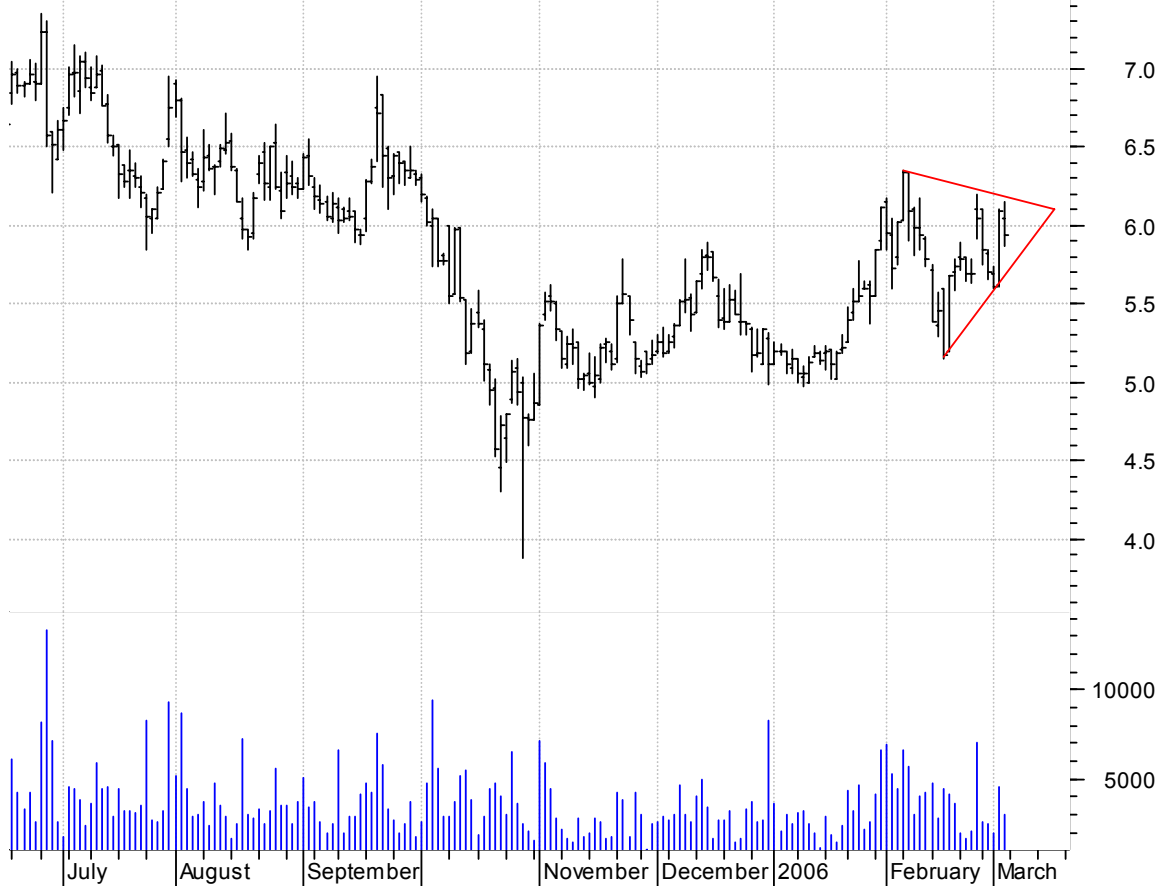
T symm. tri. preceded by 'pole-like' move / buy on upside breakout on increased volume

AT&T:NYSE (28.1900, 28.2000, 27.8500, 27.9900 -0.2900)



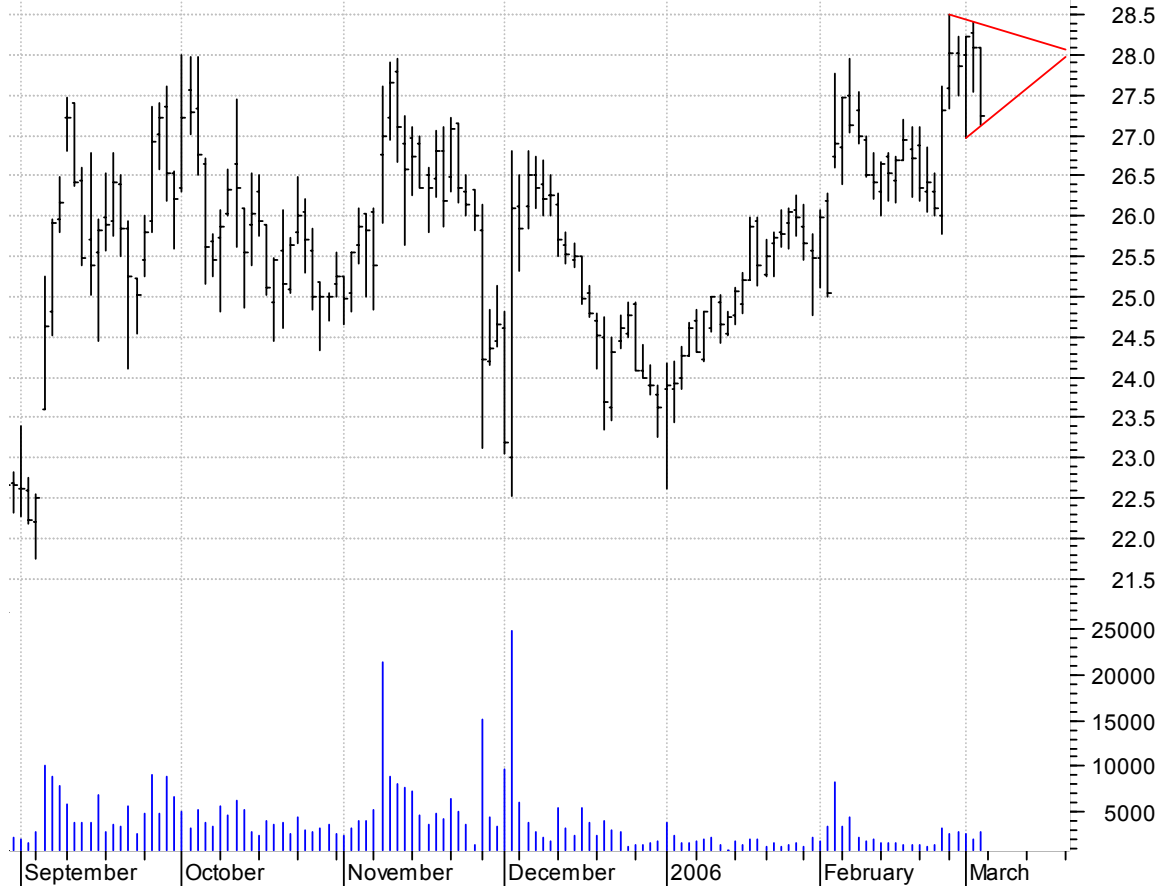
TGA symm. tri. / buy on upside brkout on increased volume

Transglobal Ener (6.0400, 6.1500, 5.8700, 5.9400 -0.1500)



VTIV symm. tri. / buy on upside brkout on increased volume

Ventiv Health In (28.1000, 28.1000, 27.1300, 27.2500 -0.8400)



chartpatterns.com
Chart Pattern Analysis for Timing the Markets

KMatras@aol.com