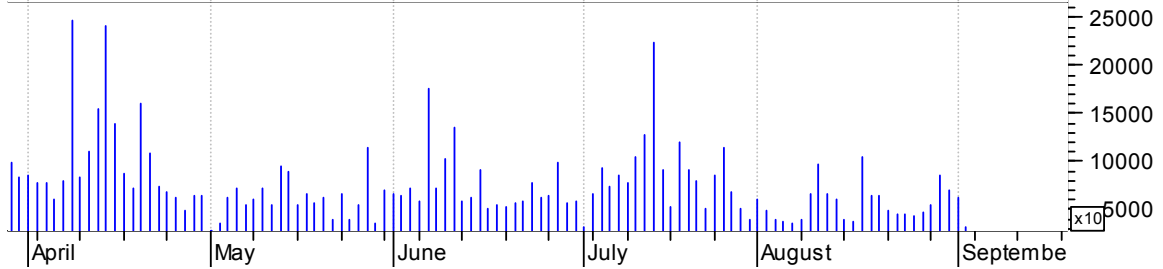


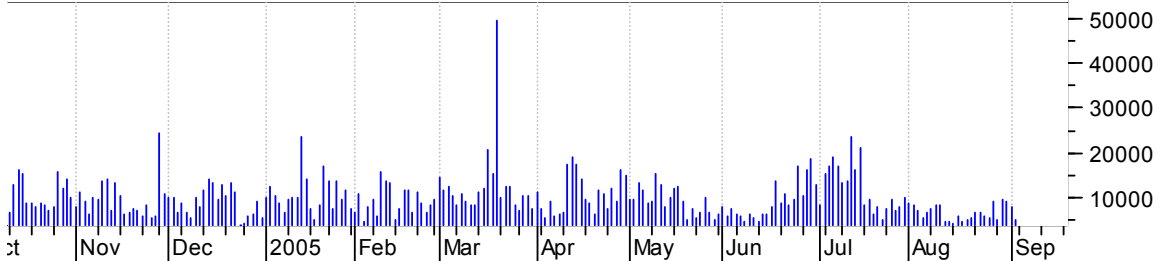
**AMD symm. tri. / buy on upside brkout on increased volume**

Advanced Micro D (21.0400, 21.1000, 20.8700, 20.9000 +0.0200)



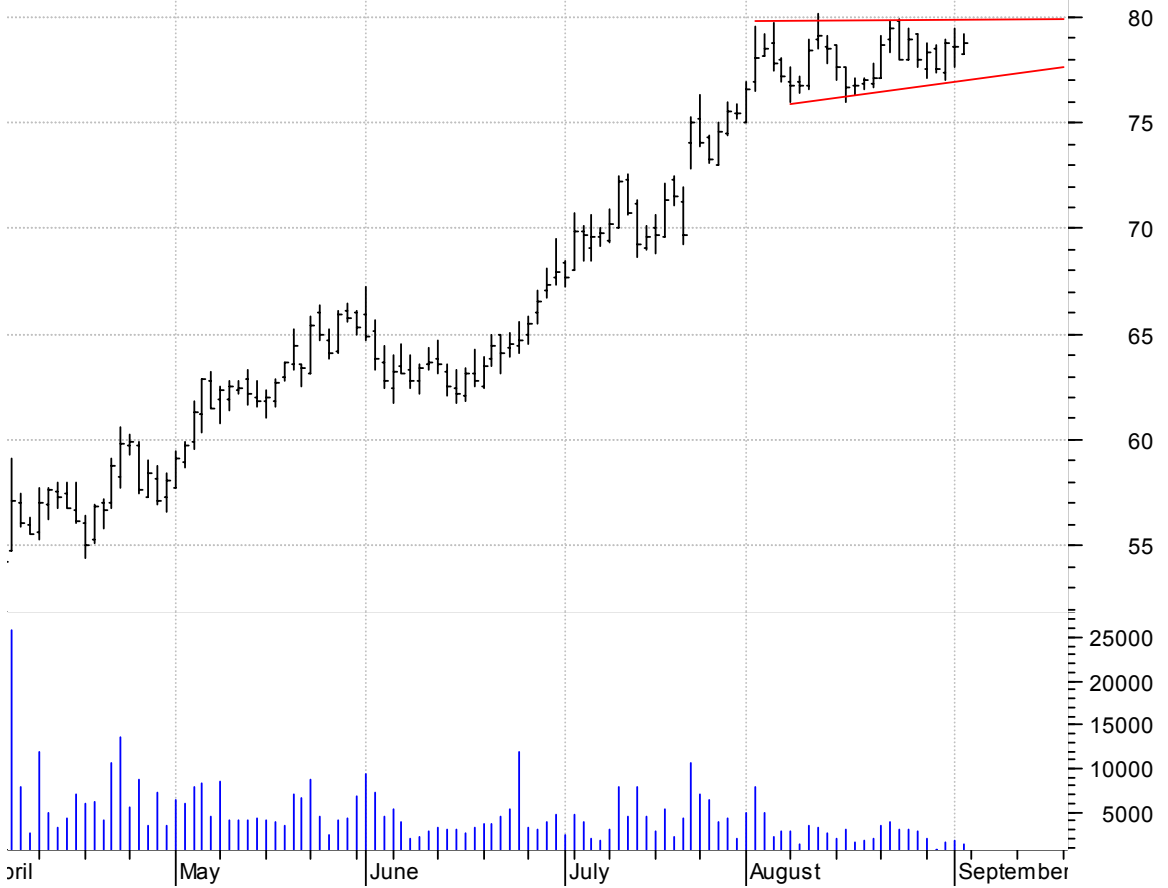
**BEN falling wedge preceded by 'pole-like' move / buy on upside brkout on increased volume**

Franklin Res Inc (81.4700, 81.9000, 80.7300, 81.4500 +0.2300)



**CERN sloppy asc. tri. / buy on upside brkout on increased volume**

Cerner Cp:OTC (78.2200, 79.2500, 78.2200, 78.8000 +0.2200)



**CMI bullish flag / buy on upside brkout on increased volume**

Cummins Engines: (86.7300, 86.8100, 85.7000, 86.1700 -0.2700)



**CNI symm. tri. preceded by 'pole-like' move / buy on upside brkout on increased volume**

Canadian Nationa (65.5400, 66.6700, 65.4000, 66.2200 -0.0200)



**CRUS sloppy asc. tri. preceded by 'pole-like' move / buy on upside brkout on increased volume**

Cirrus Logic Inc (7.4800, 7.6000, 7.2900, 7.5300 +0.0200)



**IEX symm. tri. / buy on upside brkout on increased volume**

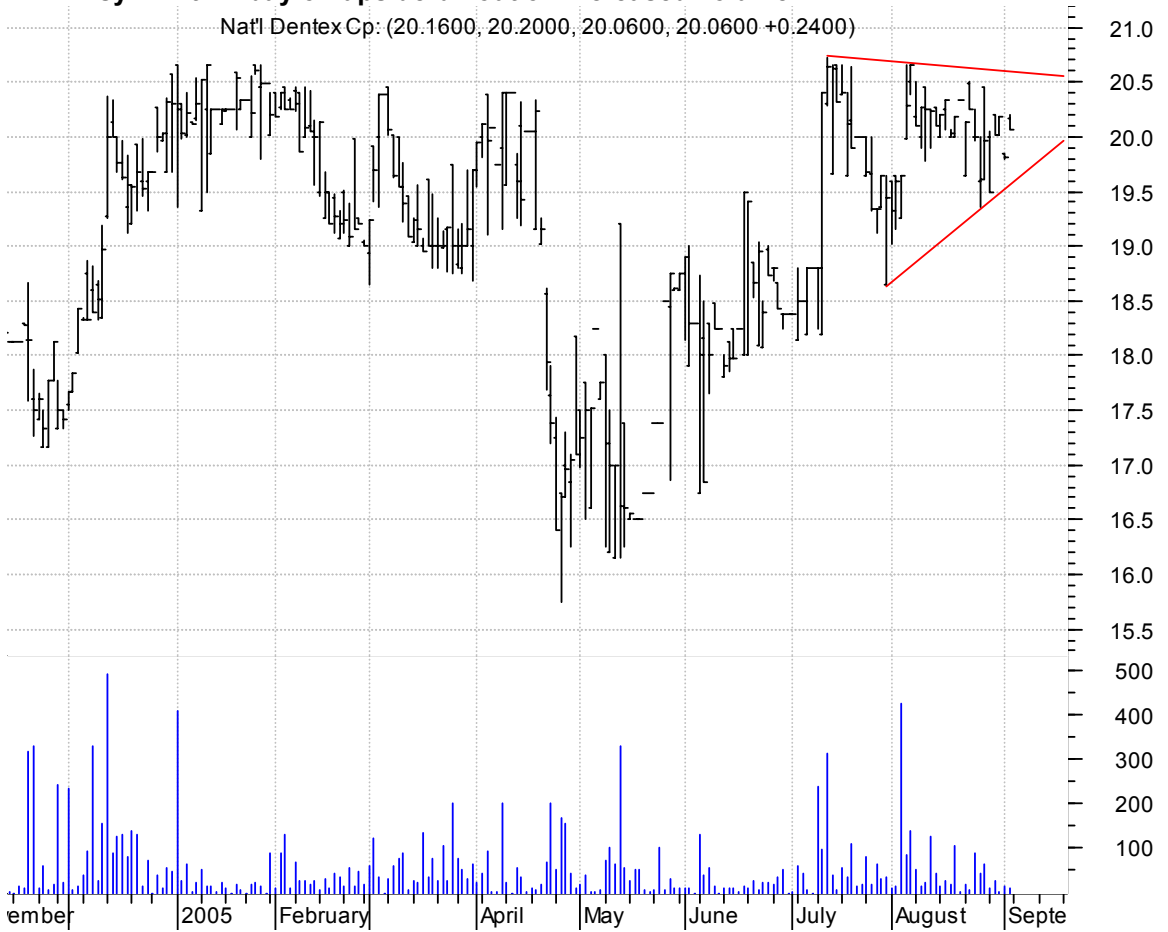


**MIRKQ bullish flag / buy on upside brkout on increased volume**



**NADX symm. tri. / buy on upside brkout on increased volume**

Nat'l Dentex Cp: (20.1600, 20.2000, 20.0600, 20.0600 +0.2400)



**PARL sloppy symm. tri. / buy on upside brkout on increased volume**

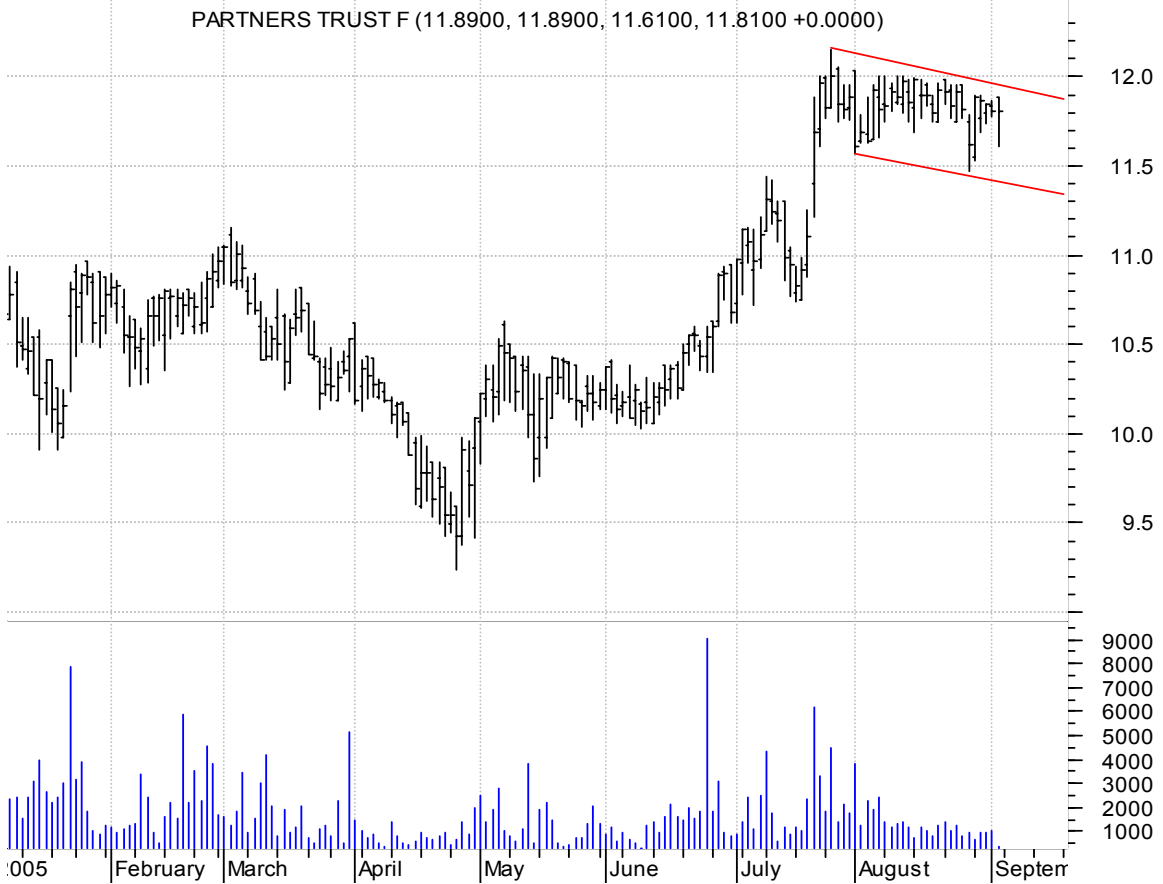
Parlux Fragrance (31.5700, 32.3900, 31.4800, 31.6900 +0.0500)



**PDC h. & sh. / 1) sell on downside brkout (solid red line -- neckline) on increased volume or  
 2) buy on upside brkout (dotted red line -- pattern failure) on increased volume  
 [h. & sh. pattern failures will often times make sharp upside breakouts]**

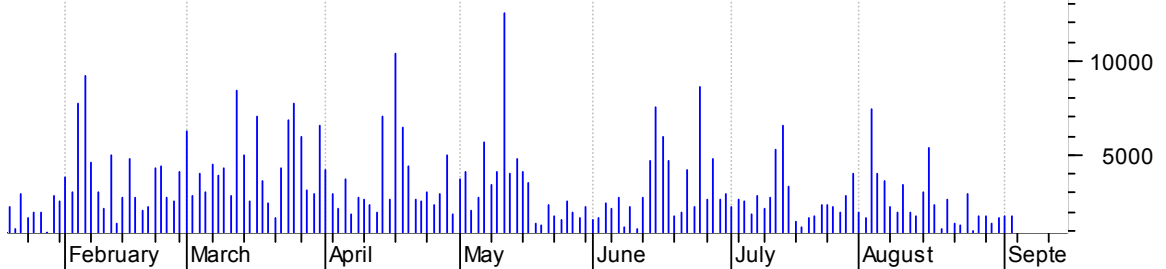


**PRTR bullish flagging / buy on upside brkout on increased volume**



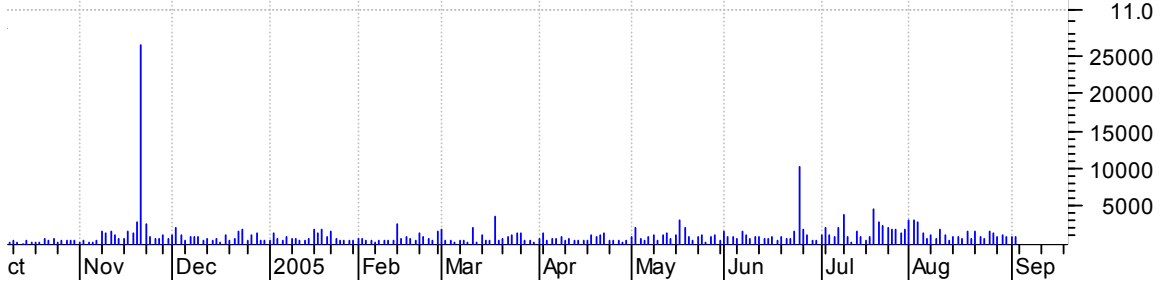
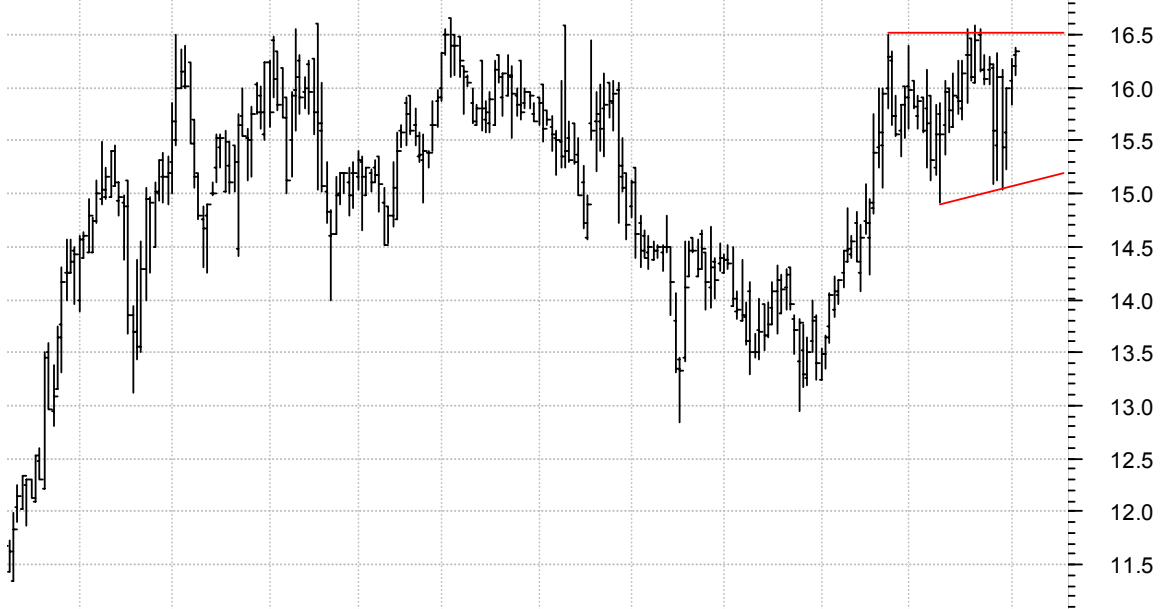
**PSYS sloppy symm. tri. / buy on upside breakout on increased volume**

PSYCHIATRIC SOLU (47.6300, 47.9800, 46.4100, 46.6200 -1.0800)



**RUSHA asc. tri. / buy on upside breakout on increased volume**

RUSH ENTERPRISES (16.3000, 16.3700, 16.1200, 16.3400 +0.1400)



**SUPG falling wedge preceded by 'pole-like' move / buy on upside breakout on larger than normal volume**



**VPHM asc. tri. / buy on upside breakout on increased volume**





**chartpatterns.com**  
Chart Pattern Analysis for Timing the Markets

[KMatras@aol.com](mailto:KMatras@aol.com)