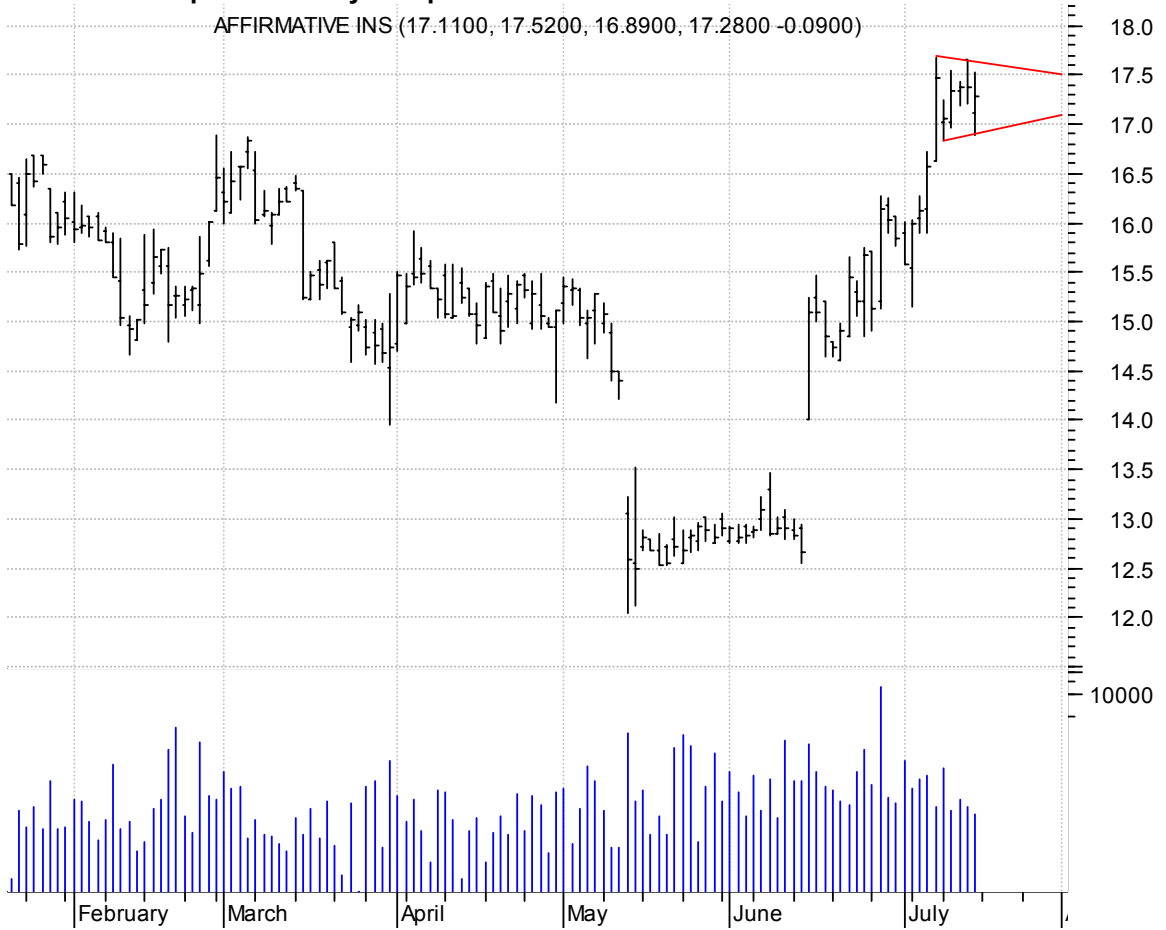


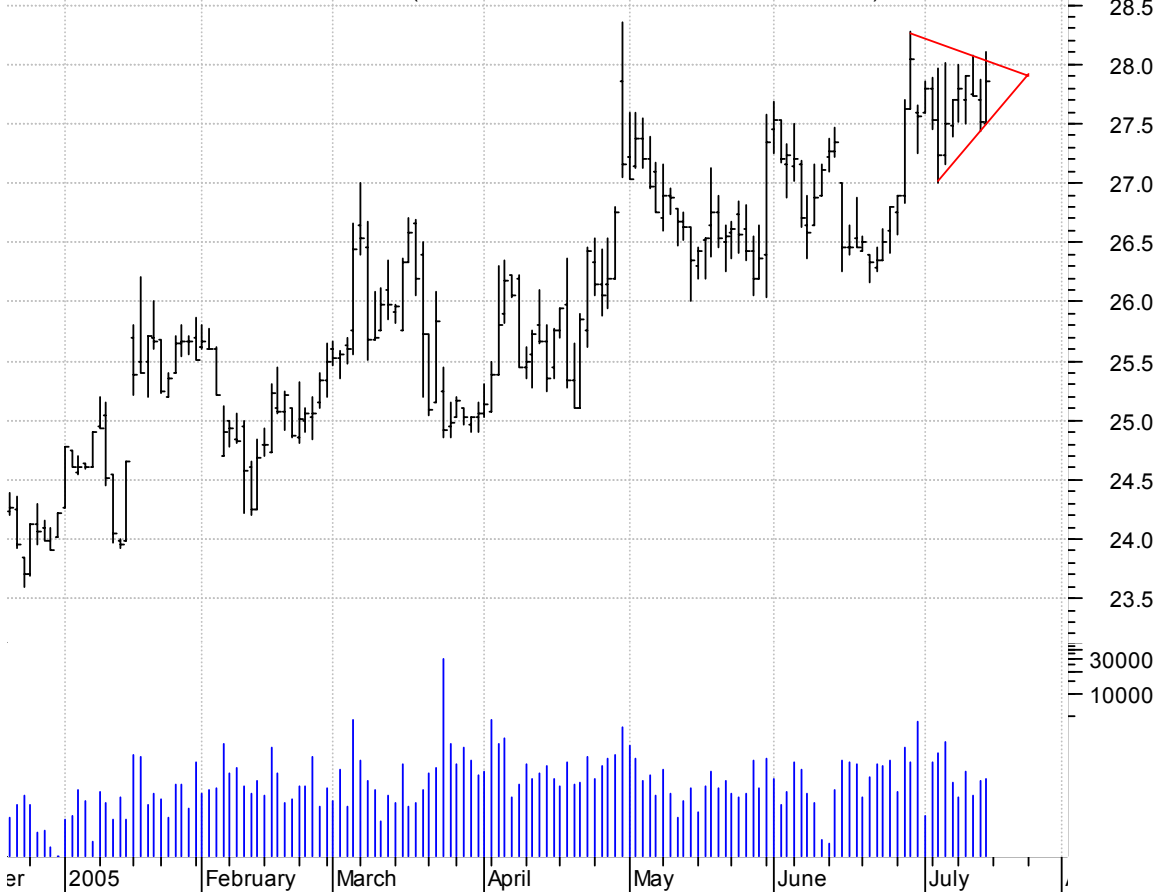
**AFFM bullish pennant / buy on upside breakout on increased volume**

AFFIRMATIVE INS (17.1100, 17.5200, 16.8900, 17.2800 -0.0900)



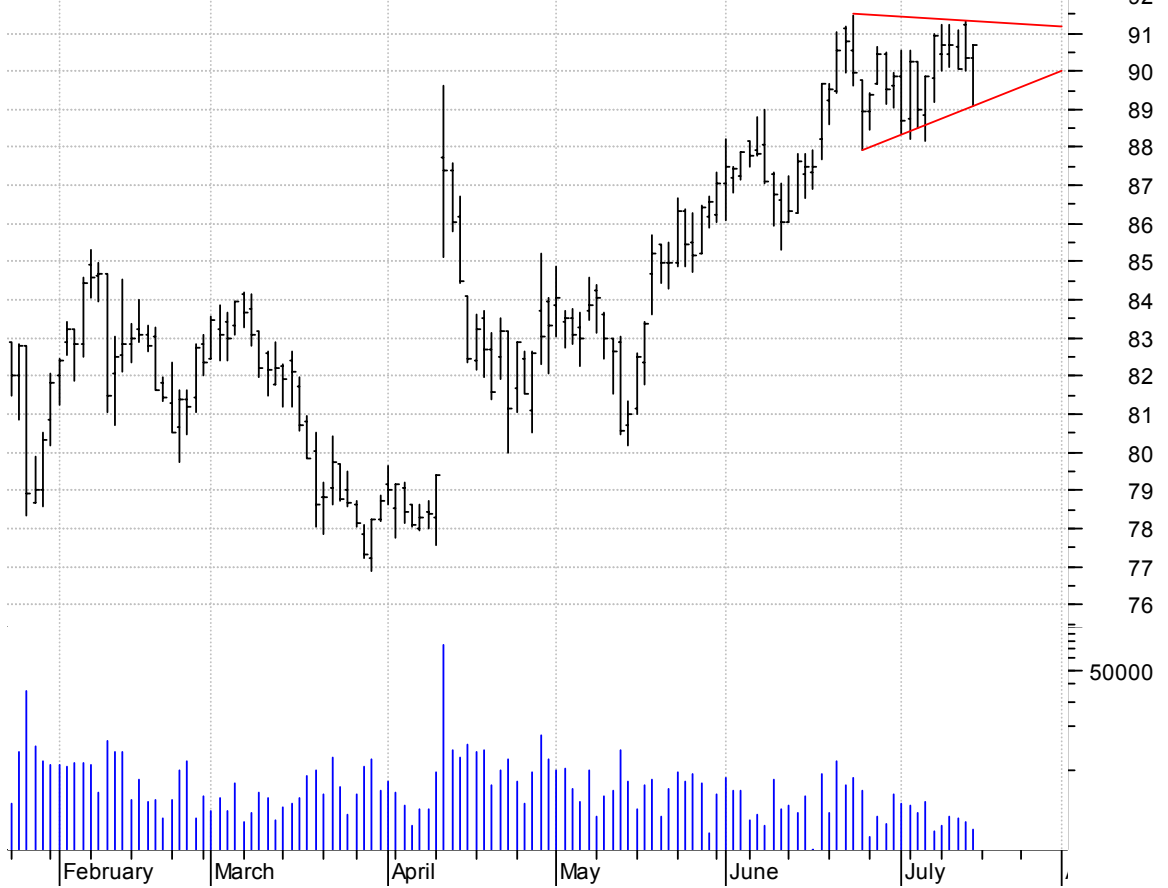
**AHL symm. tri. / buy on upside breakout on increased volume**

ASPEN INSURANCE (27.5000, 28.1000, 27.5000, 27.8600 +0.3400)



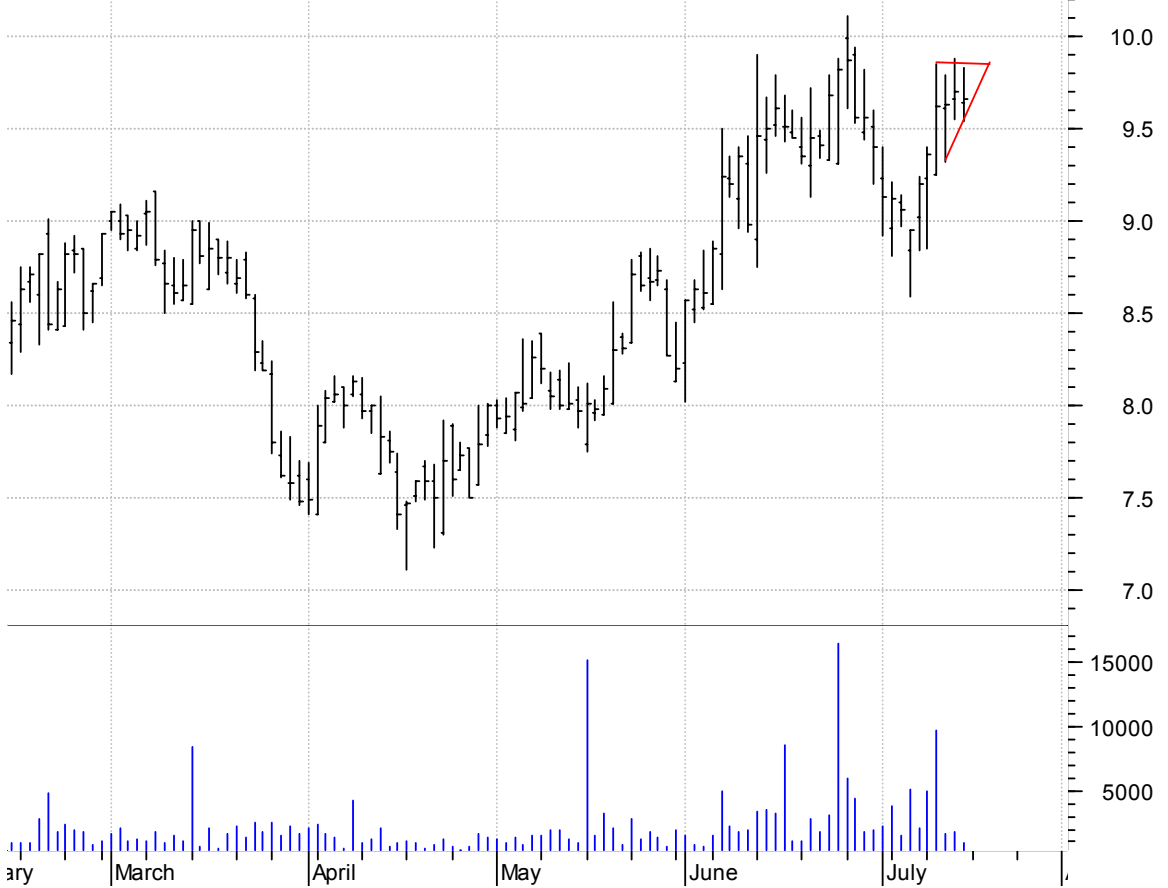
**BDK symm. tri. / buy on upside brkout on increased volume**

Black & Decker M (90.3400, 90.7100, 89.1000, 90.7100 +0.3700)



**BELM asc. tri. / buy on upside brkout on increased volume**

Bell Microproduc (9.6400, 9.8300, 9.5400, 9.6600 -0.0400)



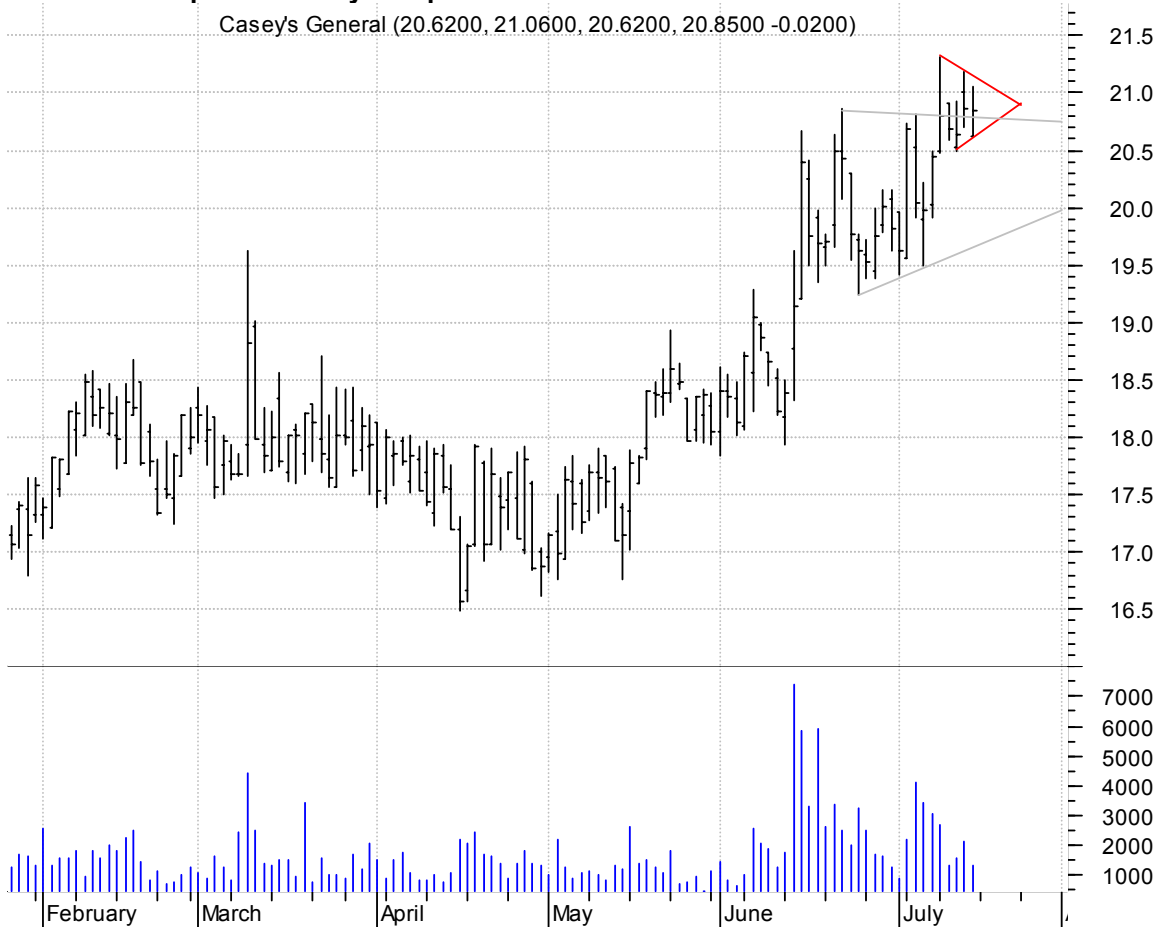
**BG asc. tri. / buy on upside breakout on increased volume**

BUNGE LTD:NYSE (64.6100, 65.3500, 64.6100, 65.0500 +0.1400)



**CASY bullish pennant / buy on upside breakout on increased volume**

Casey's General (20.6200, 21.0600, 20.6200, 20.8500 -0.0200)



**CEG symm. tri. / buy on upside brkout on increased volume**

Constellation En (57.8300, 58.0900, 57.8300, 58.0100 -0.0700)



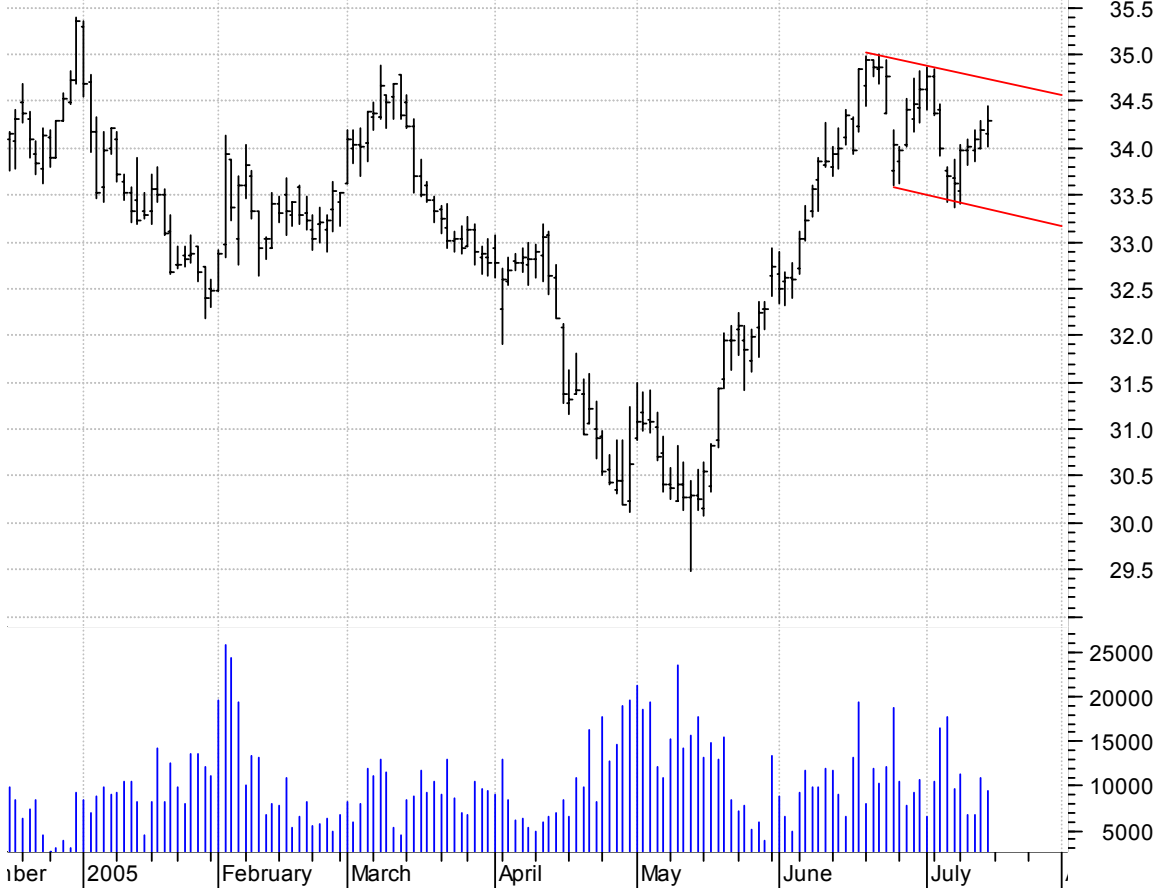
**CSH symm. tri. / buy on upside brkout on increased volume**

Cash America Int (19.9000, 20.2300, 19.8400, 20.0900 +0.1900)



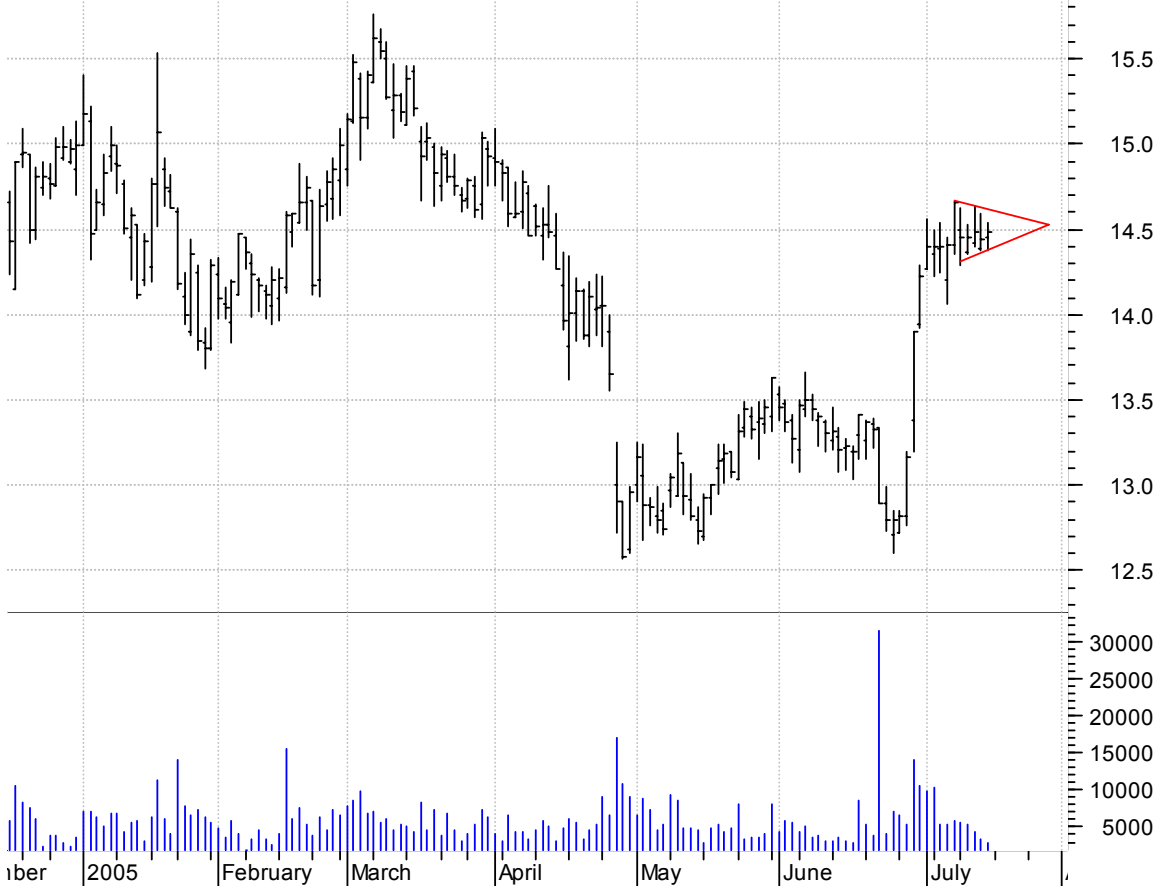
**CTL bullish flagging / buy on upside breakout on increased volume**

CenturyTel Inc:N (34.1500, 34.4500, 34.0100, 34.2900 +0.0900)



**CVG bullish pennant / buy on upside breakout on increased volume**

Convergys Corp:N (14.4500, 14.5400, 14.3800, 14.4800 +0.0400)



**CVX symm. tri. / buy on upside brkout on increased volume**

Chevron:NYSE (56.8200, 56.9600, 56.1200, 56.6700 -0.1500)



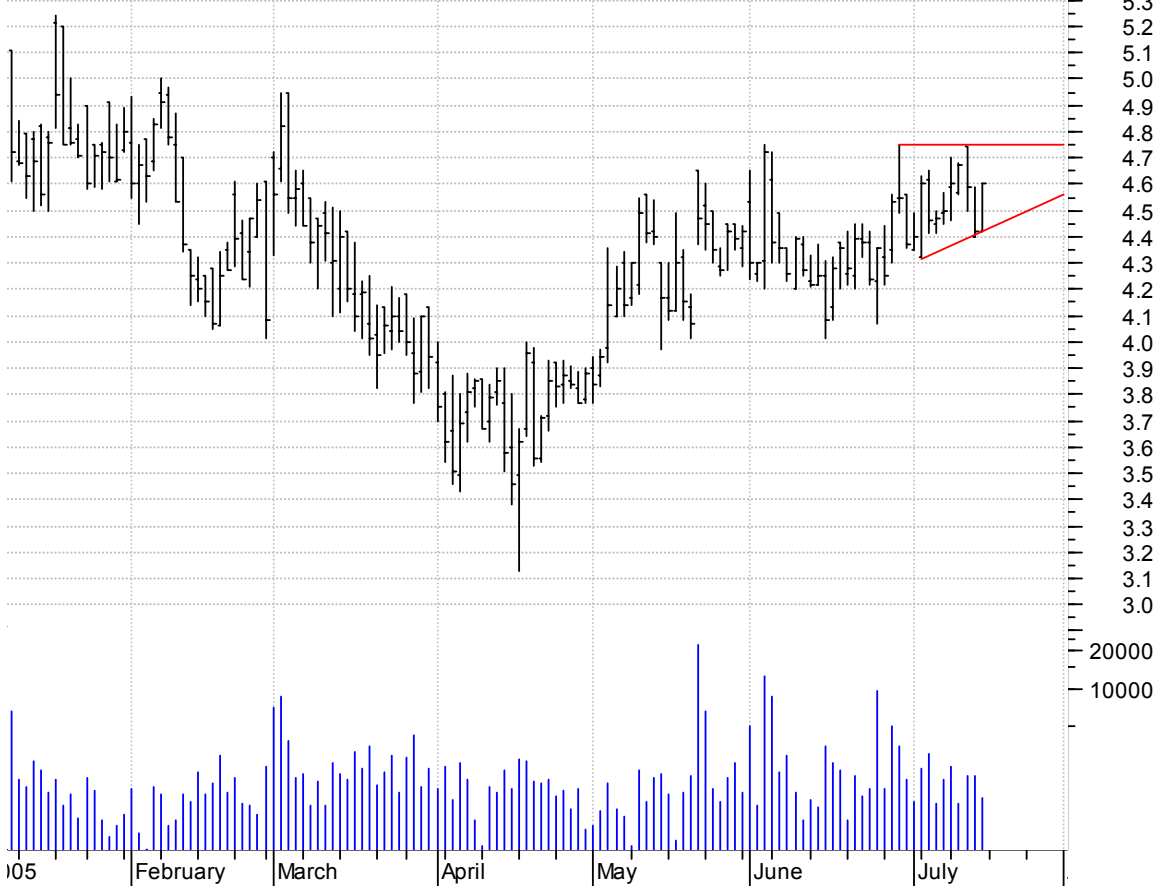
**CYBS symm. tri. / buy on upside brkout on increased volume**

Cybersource Corp (7.2000, 7.5100, 7.1900, 7.4700 +0.1700)



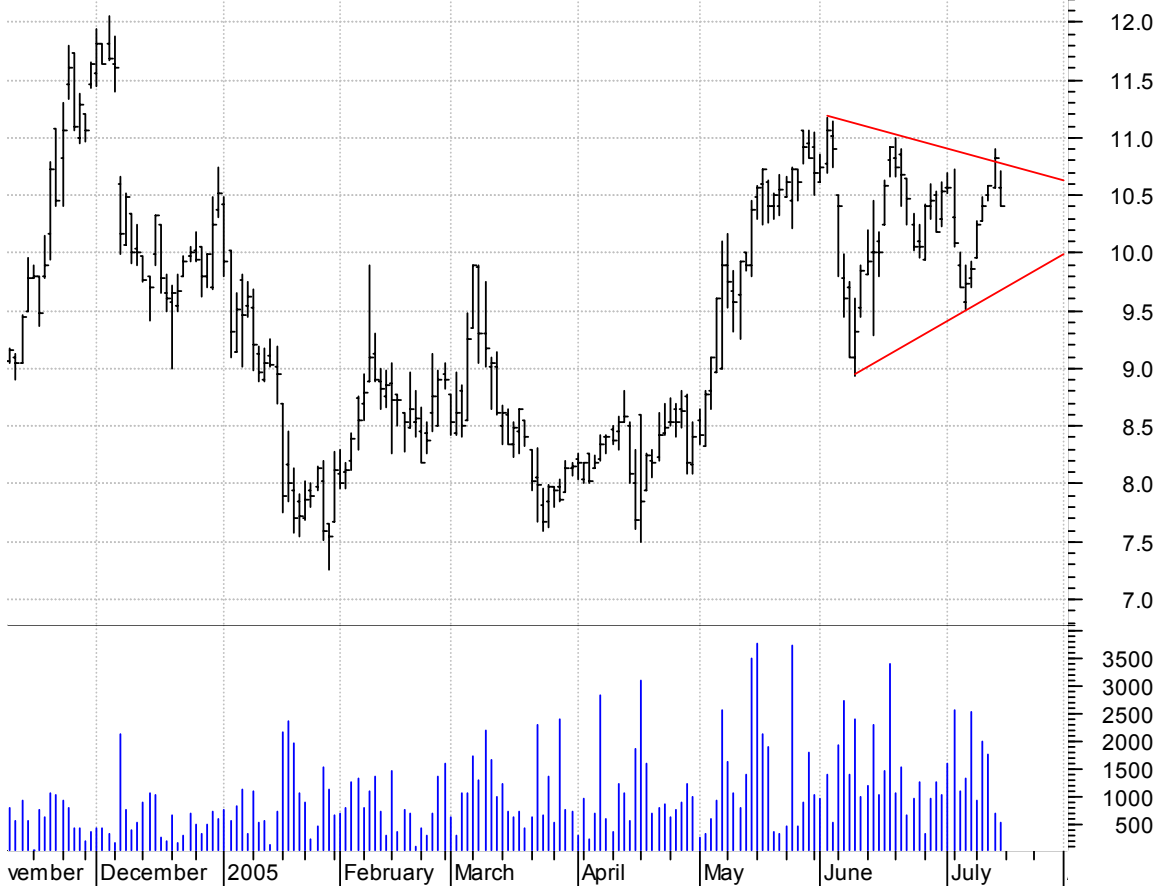
**DEPO asc. tri. / buy on upside breakout on increased volume**

Depomed Inc:OTC (4.4200, 4.6000, 4.4200, 4.6000 +0.1800)



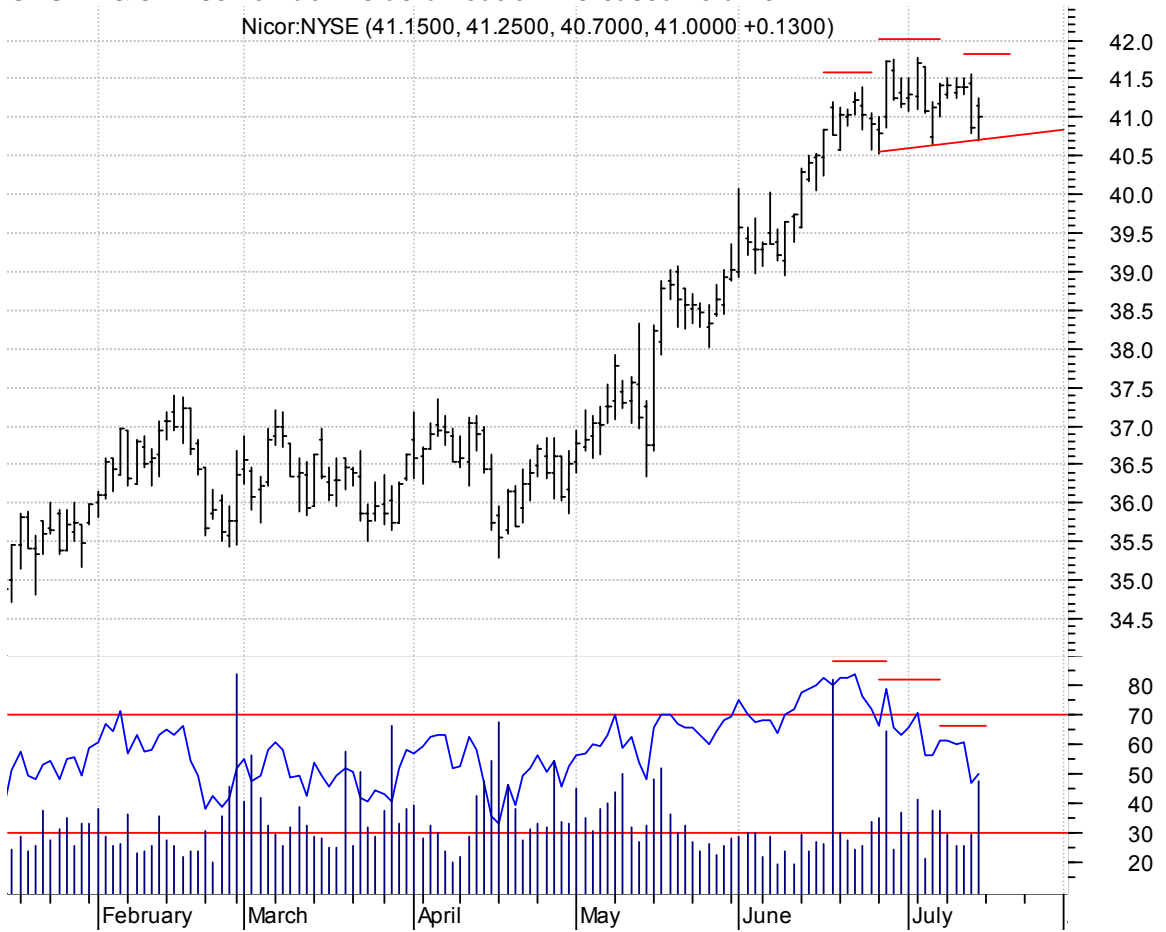
**EMT symm. tri. / buy on upside breakout on increased volume**

Embratel SAADS: (10.5700, 10.7100, 10.4000, 10.4100 -0.4100)



### GAS h. & sh. / sell on downside brkout on increased volume

Nicor:NYSE (41.1500, 41.2500, 40.7000, 41.0000 +0.1300)



### GMRK bullish flagging / buy on upside brkout on increased volume

Gulfmark Offshor (28.2100, 28.2100, 27.2200, 27.4800 -0.5700)





**GW symm. tri. / buy on upside breakout on increased volume**

Grey Wolf Inc:AM (7.4800, 7.6300, 7.4800, 7.5400 +0.1200)



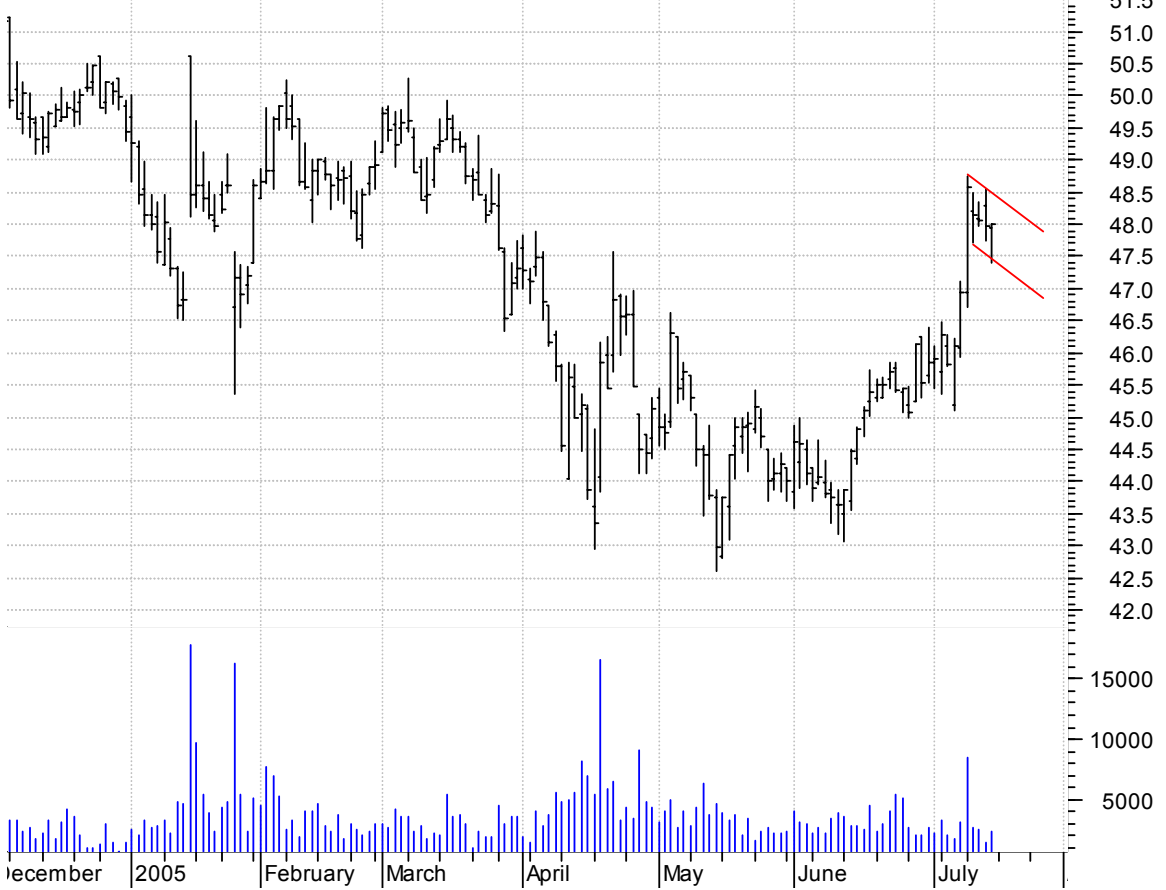
**JOYG symm. tri. / buy on upside breakout on increased volume**

Joy Global:OTC (35.2300, 36.0000, 35.0000, 35.8300 +0.4200)



### KMT bullish flag / buy on upside brkout on increased volume

Kennametal Inc:N (47.9300, 48.0000, 47.3900, 48.0000 +0.0200)



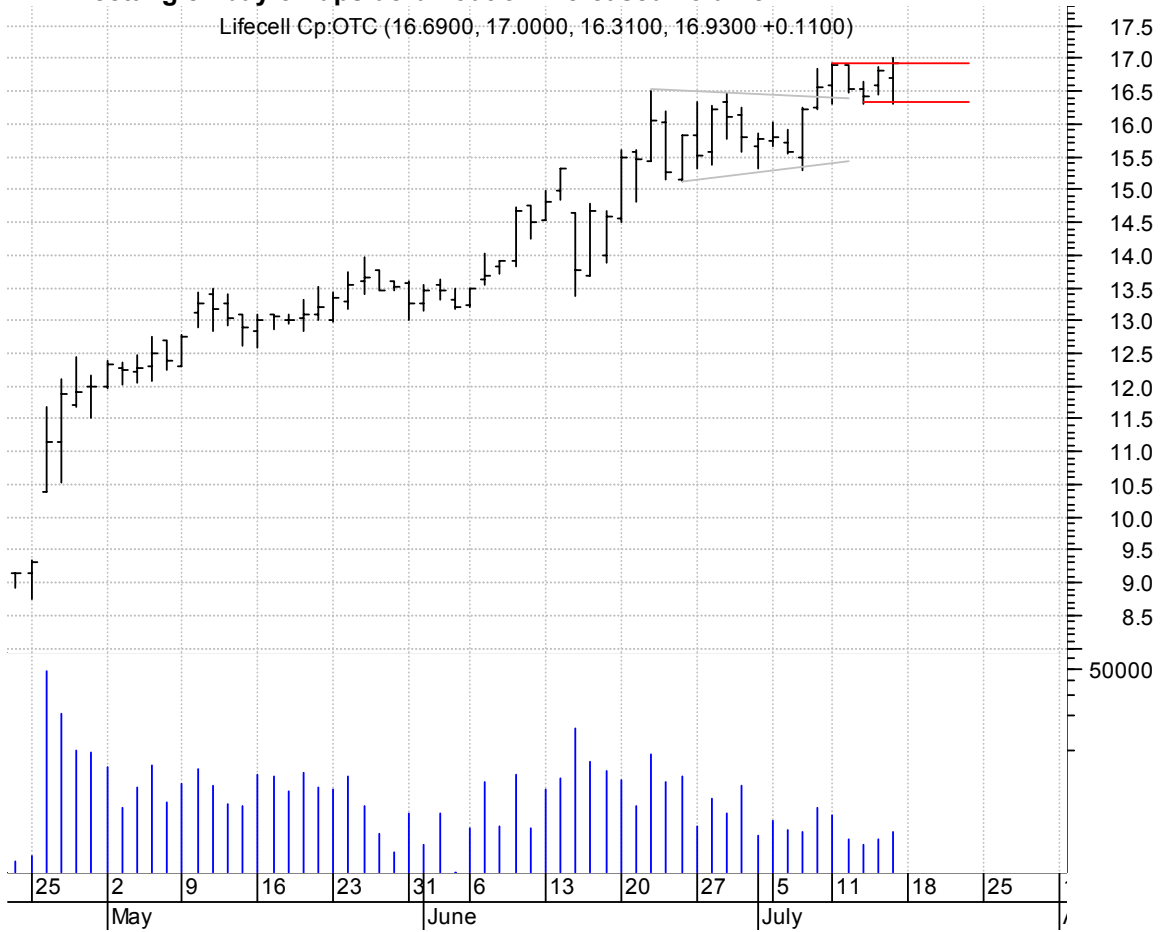
### LAYN symm. tri. / buy on upside brkout on increased volume

Layne Christense (19.5200, 20.0000, 19.5200, 19.9200 +0.1800)



**LIFC rectangle / buy on upside brkout on increased volume**

Lifecell Cp:OTC (16.6900, 17.0000, 16.3100, 16.9300 +0.1100)



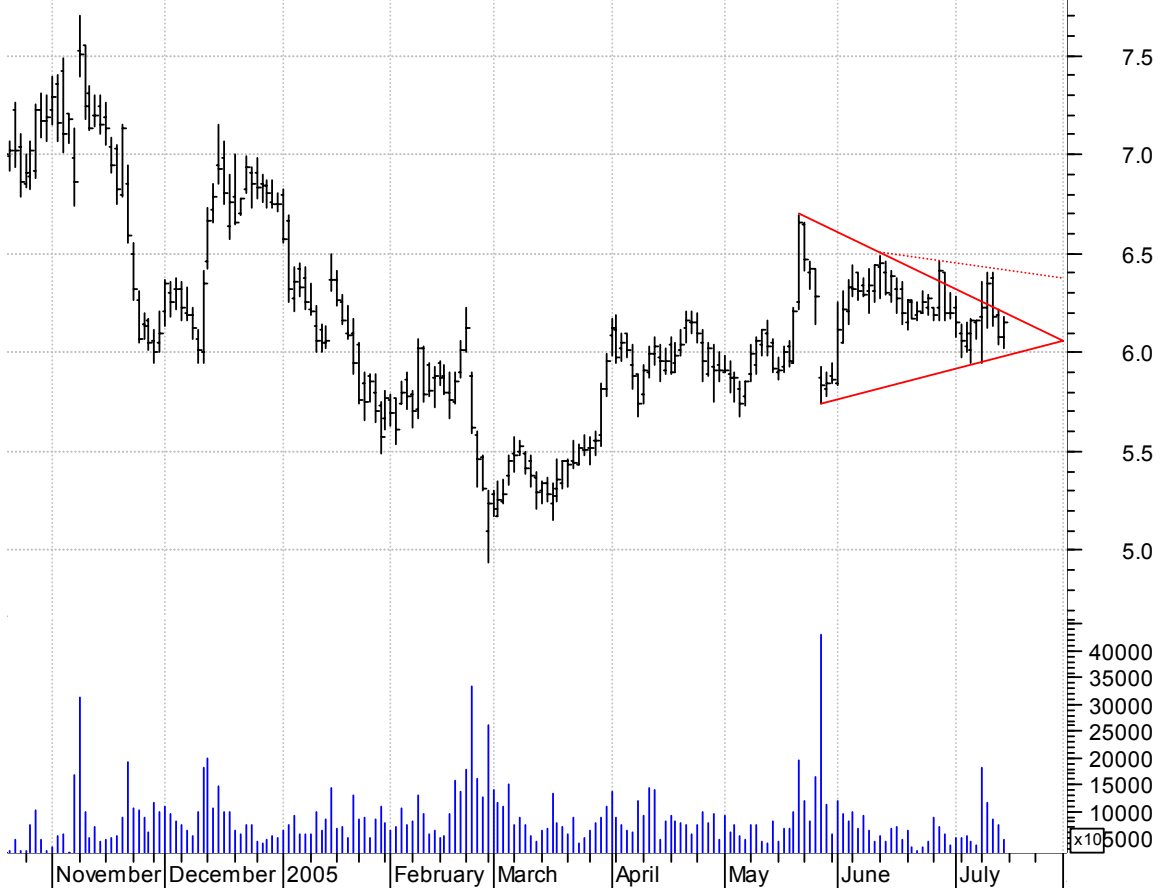
**MDR symm. tri. / buy on upside brkout on increased volume**

McDermott Intl I (21.9100, 22.1800, 21.8500, 22.0700 +0.000)



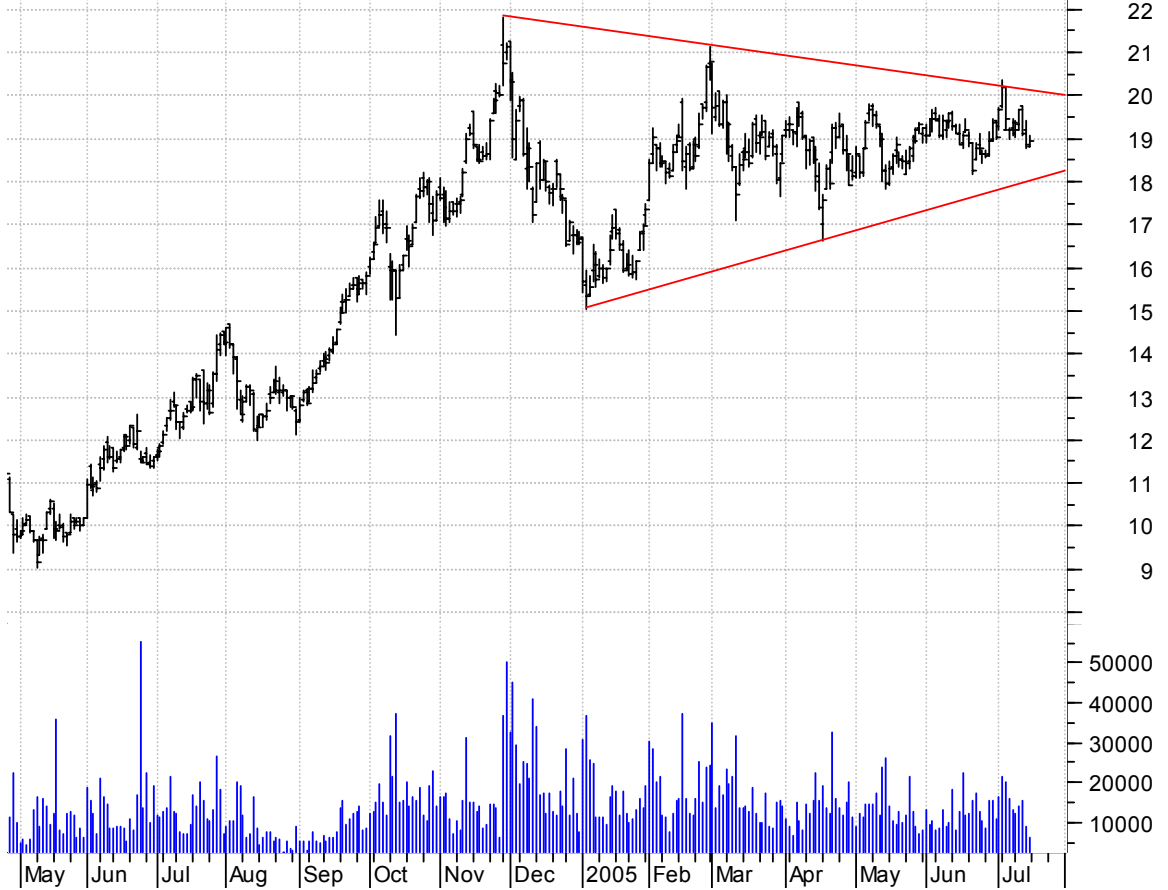
**NOVL symm. tri. / buy on upside brkout thru dotted red line on increased volume**

Novell Inc:OTC (6.0800, 6.1800, 6.0200, 6.1500 +0.0700)



**OMM symm. tri. / buy on upside brkout on increased volume**

OMI Corp:NYSE (18.8100, 19.0600, 18.8000, 18.9500 +0.0800)



**PCG symm. tri. / buy on upside breakout on increased volume**

PG & E Corp:NYSE (37.2000, 37.4000, 37.1200, 37.2900 -0.0900)

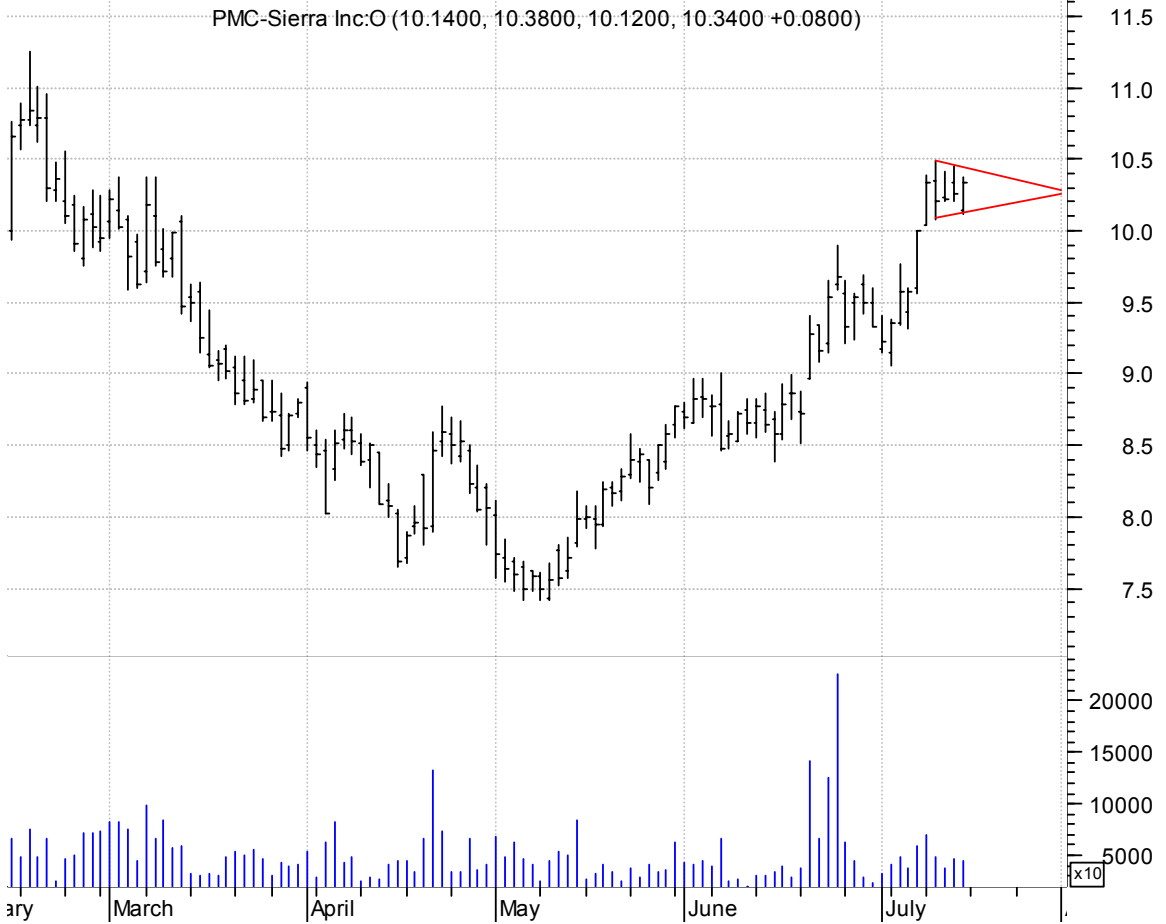


**PDC sloppy bullish flagging / buy on upside breakout on increased volume**

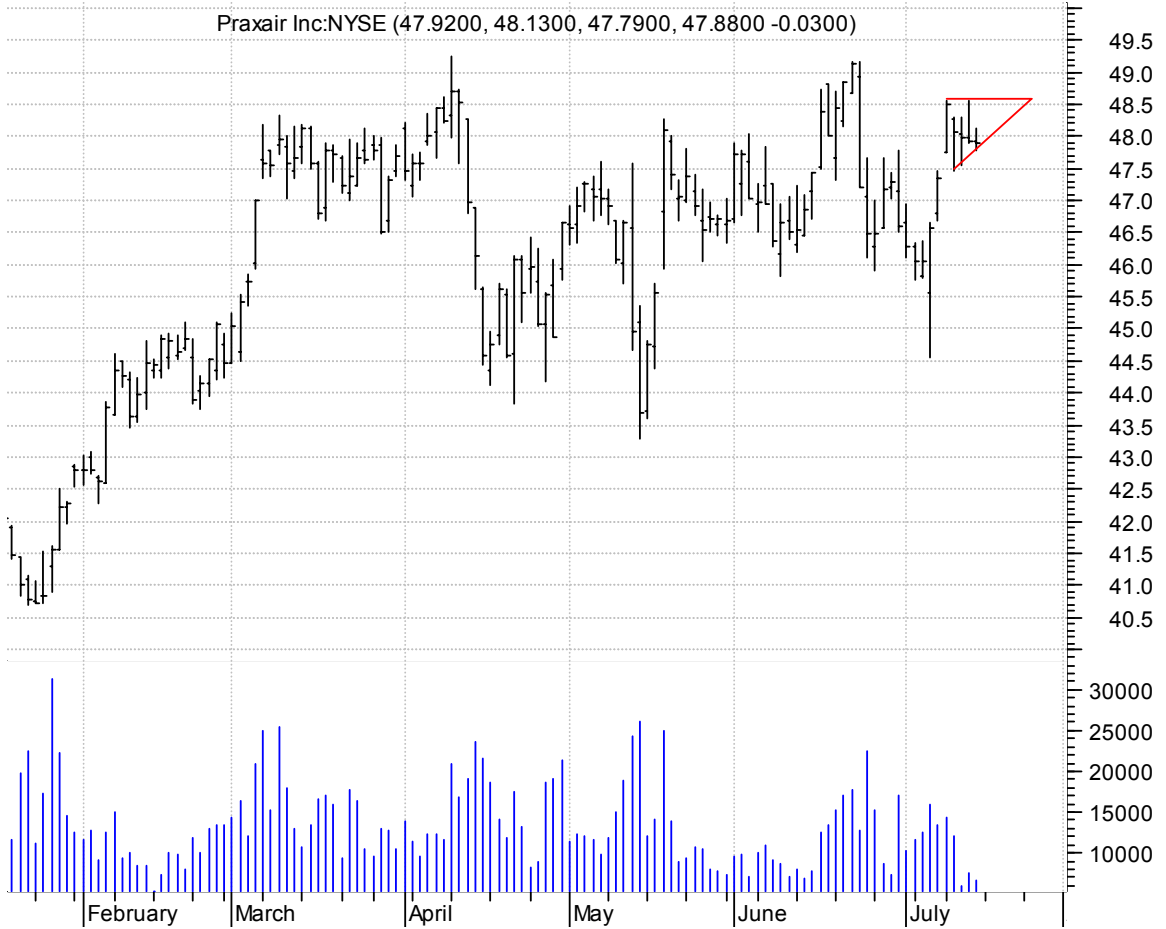
Pioneer Drilling (14.6100, 14.9500, 14.5200, 14.8700 +0.2600)



**PMCS bullish pennant / buy on upside breakout on increased volume**

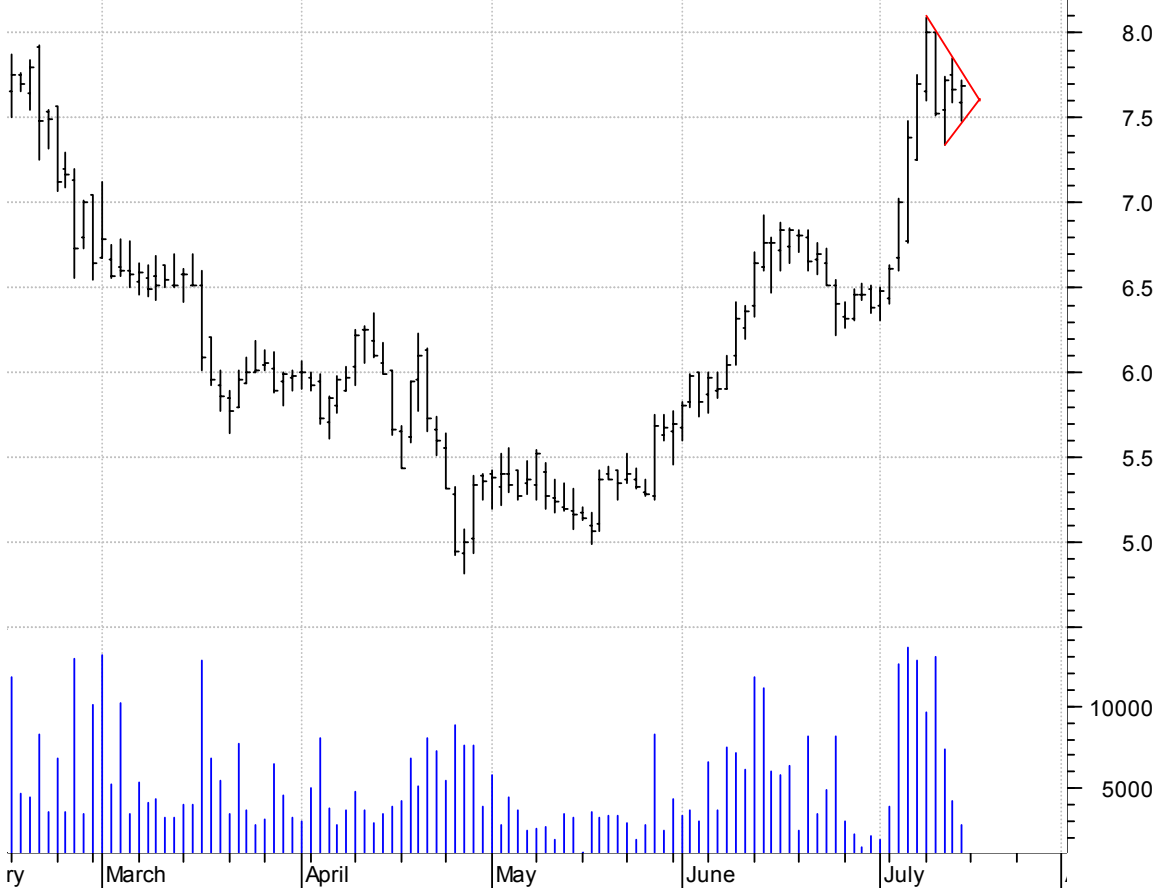


**PX asc. tri. preceded by 'pole-like' move / buy on upside breakout on increased volume**



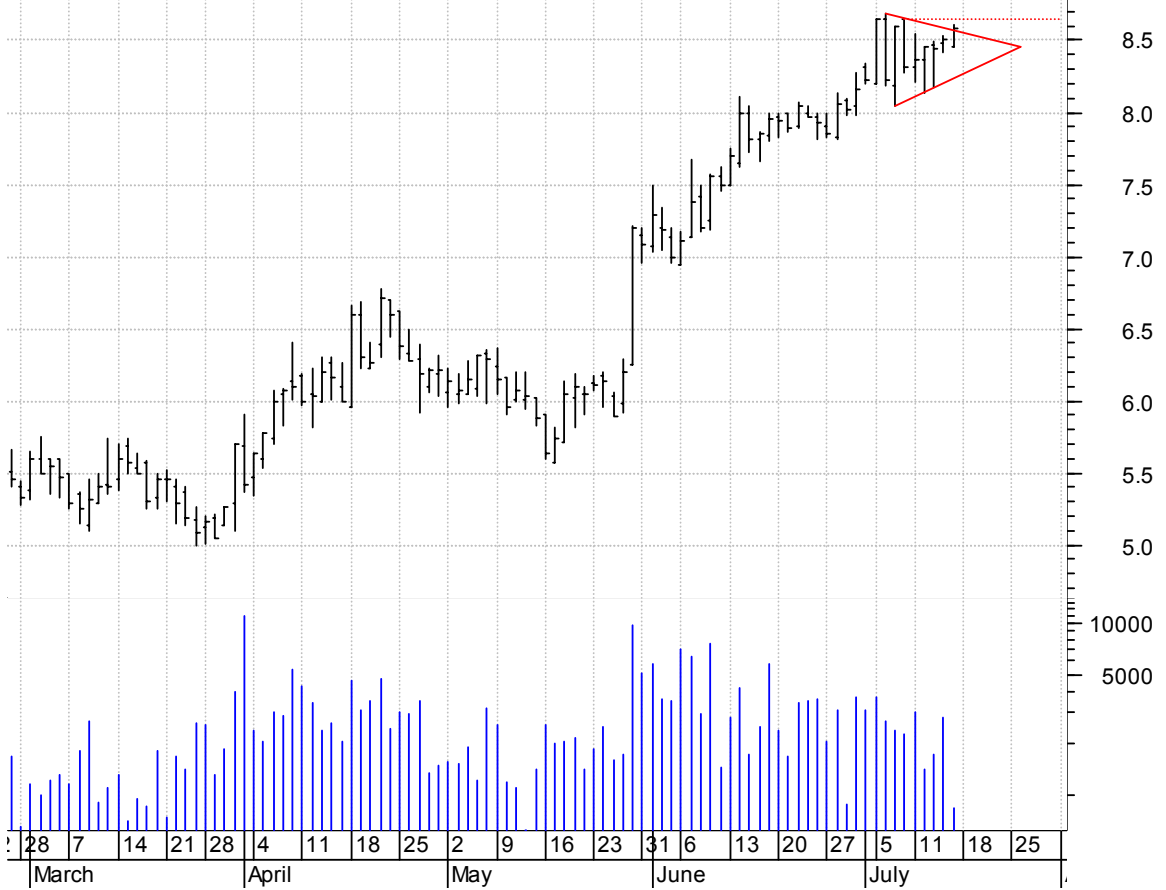
**RBAK bull pennant / buy on upside brkout on increased volume**

Redback Networks (7.5900, 7.7200, 7.4800, 7.6900 +0.0200)

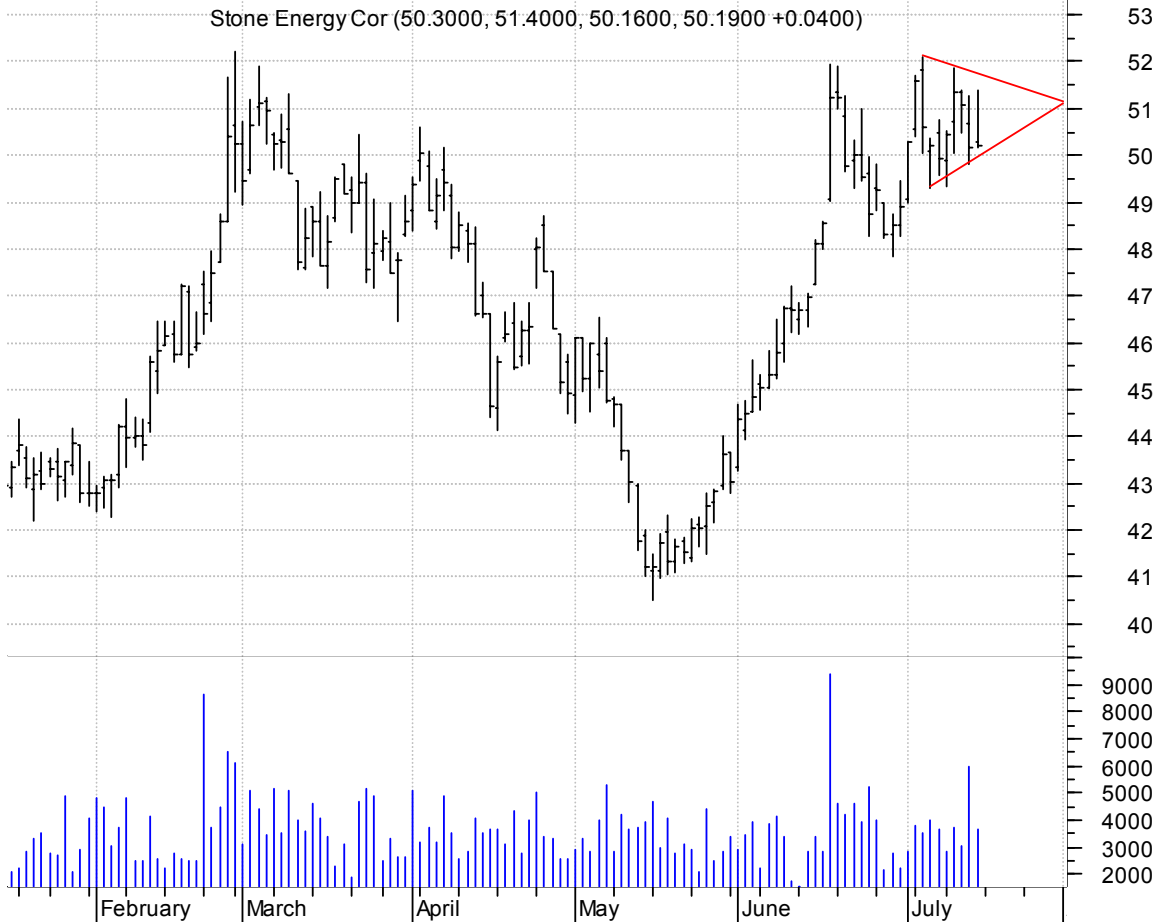


**RSTO symm. tri. / buy on upside brkout thru dotted red line on increased volume**

Restoration Hard (8.4500, 8.6100, 8.4500, 8.5800 +0.0800)



**SGY symm. tri. / buy on upside brkout on increased volume**



**SKE bullish flagging / buy on upside brkout on increased volume**





**SKX asc. tri. / buy on upside brkout on increased volume**

Skechers USA Inc (14.2500, 14.5900, 14.0800, 14.5500 +0.2600)

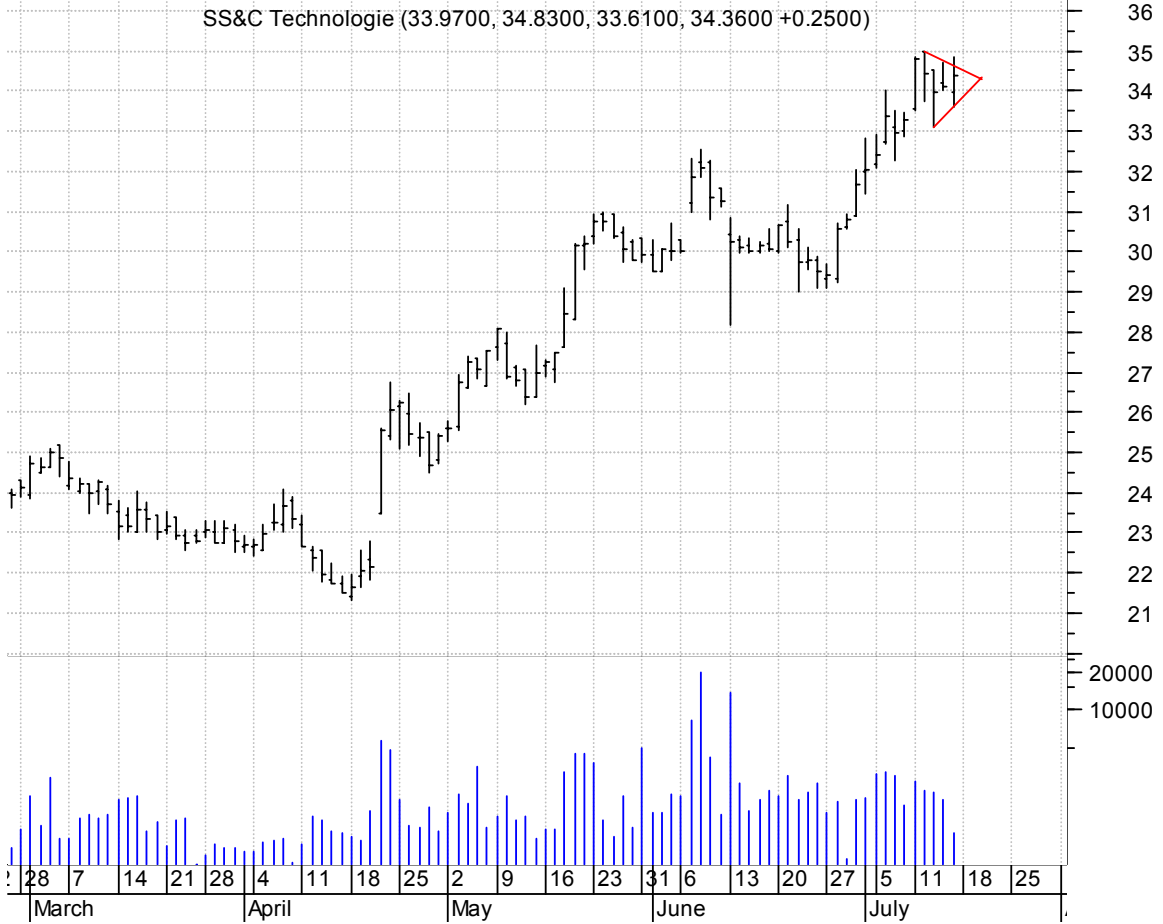


**SMSC asc. tri. preceded by 'pole-like' move / buy on upside brkout on increased volume**

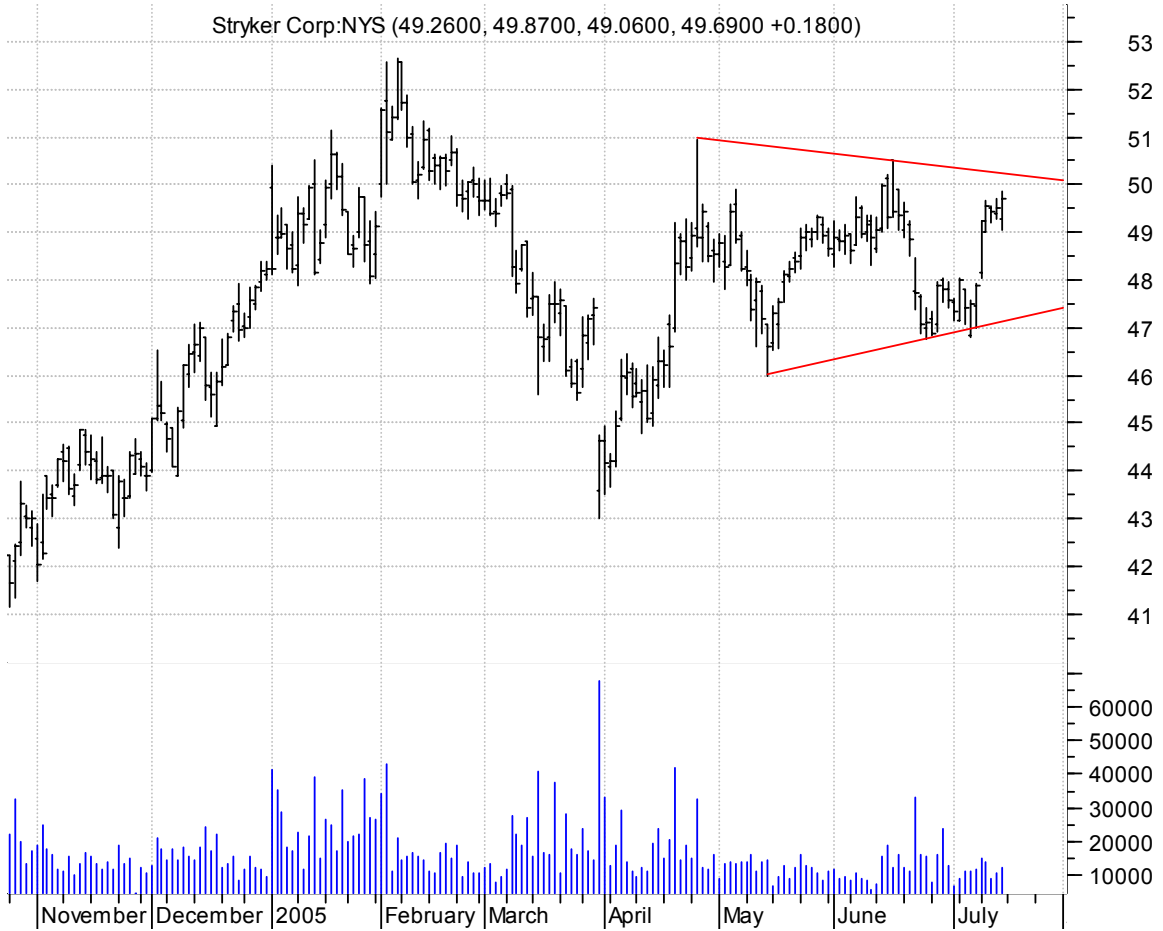
Standard Microsry (24.6300, 24.9900, 24.0200, 24.6800 -0.1400)



**SSNC symm. tri. preceded by 'pole-like' move / buy on upside breakout on increased volume**



**SYK symm. tri. / buy on upside breakout on increased volume**



### WLSN symm. tri. / buy on upside breakout on increased volume



### XOM symm. tri. / buy on upside breakout on increased volume



**chartpatterns.com**  
Chart Pattern Analysis for Timing the Markets

[KMatras@aol.com](mailto:KMatras@aol.com)