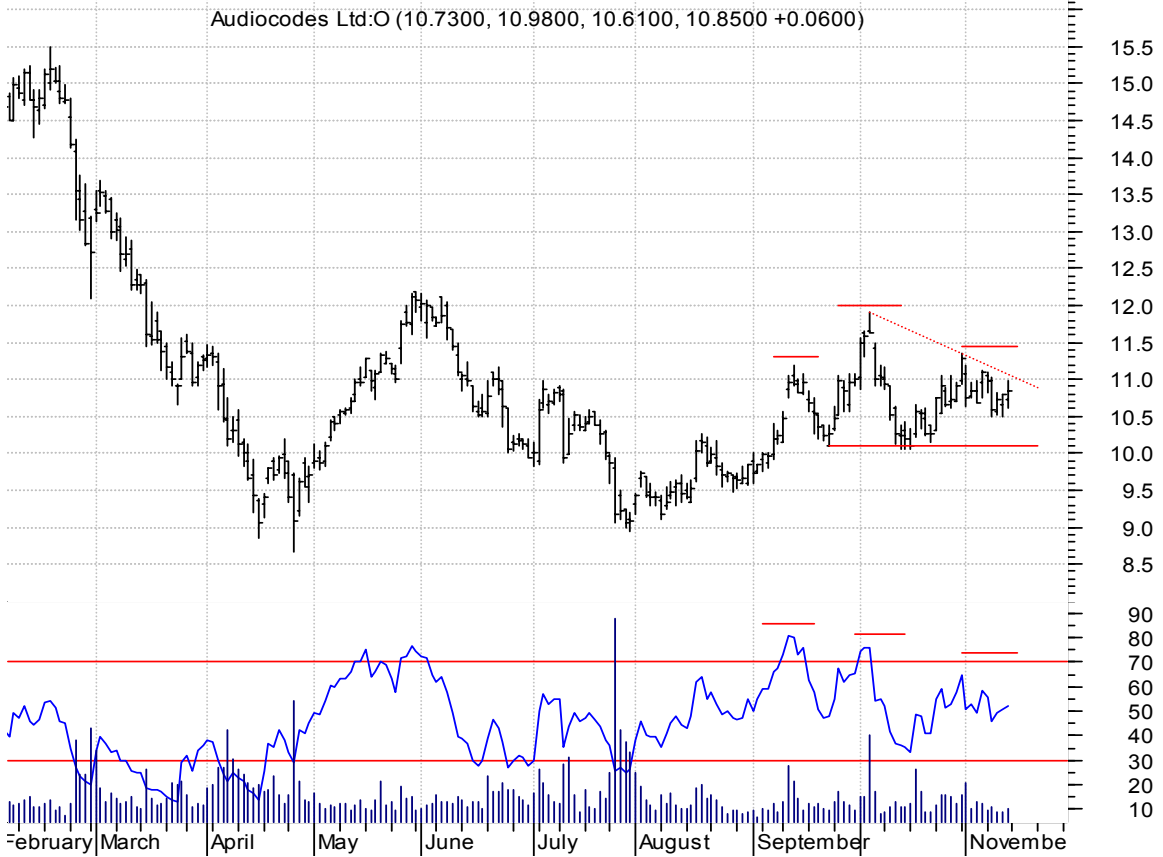


ADBE symm. tri. / buy on upside brkout on increased volume

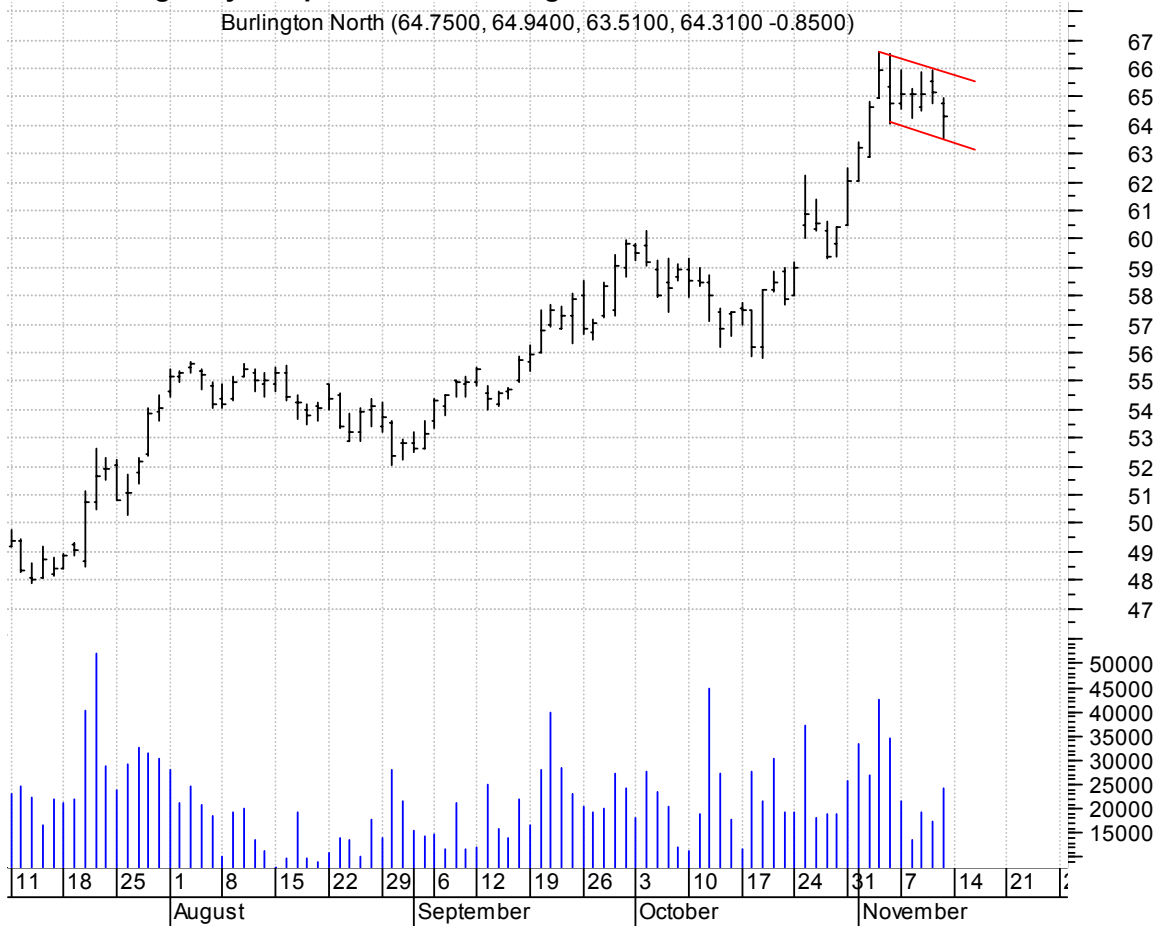


AUDC h. & sh. / you would typically sell on a downside brkout (but don't since it's such a cheap stock), instead, buy on upside brkout (dotted red line -- pattern failure) on increased volume [h. & sh. pattern failures will often make sharp upside brkouts]



BNI bull flag / buy on upside breakout on larger than normal volume

Burlington North (64.7500, 64.9400, 63.5100, 64.3100 -0.8500)

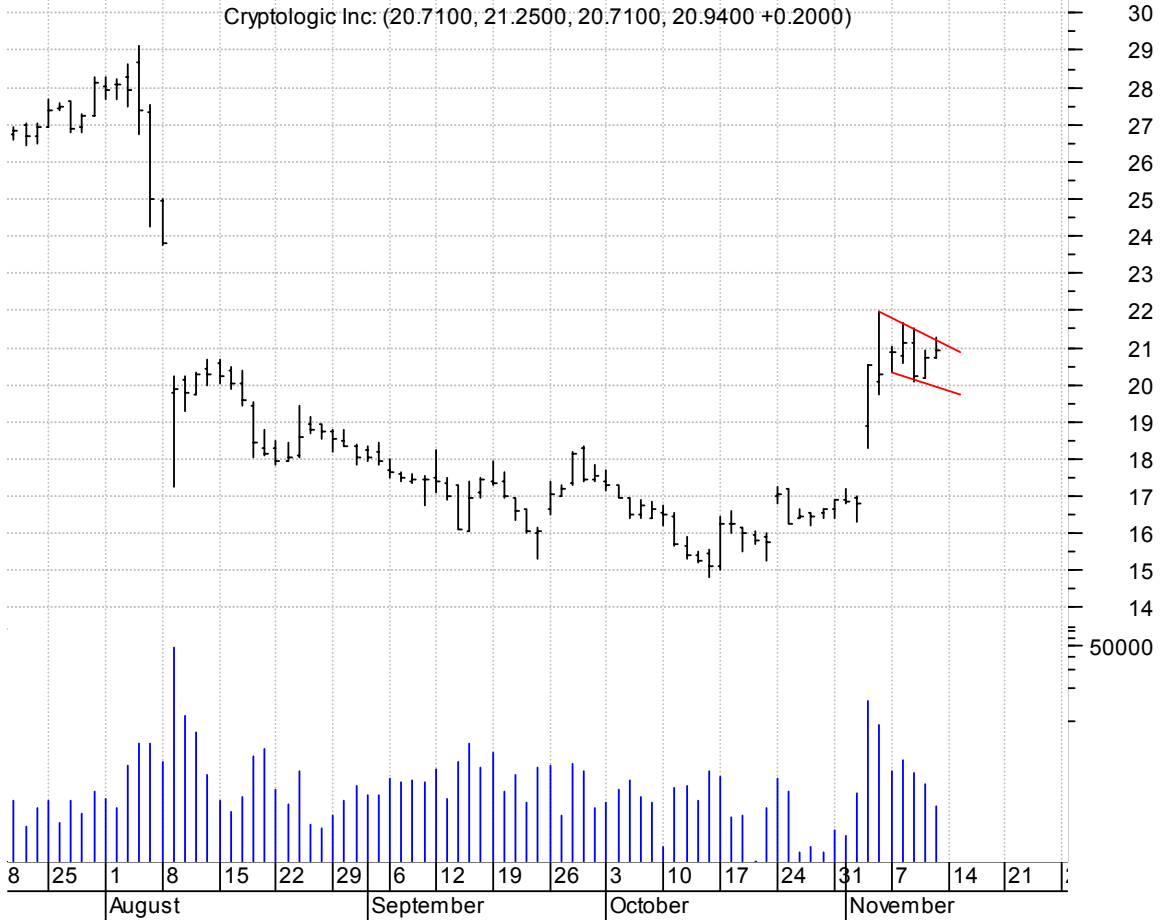


CLB symm. tri. preceded by 'pole-like' move / buy on upside breakout on increased volume

Core Laboratorie (33.9500, 34.5500, 33.8000, 34.4900 +0.4000)



CRYP falling wedge preceded by 'pole-like' move / buy on upside brkout on increased volume

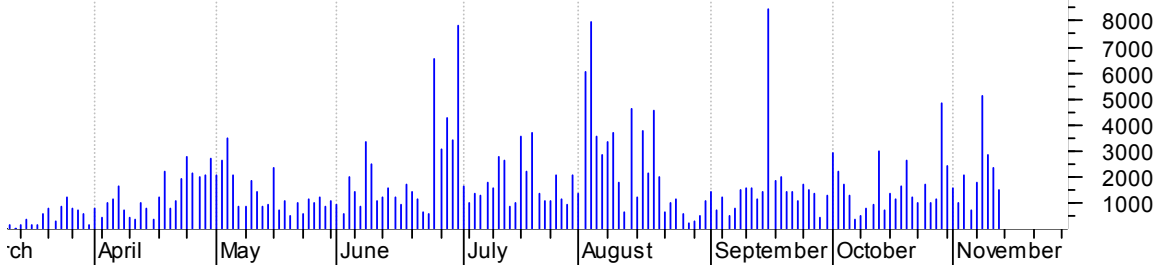


CSX rectangle / buy on upside brkout on increased volume



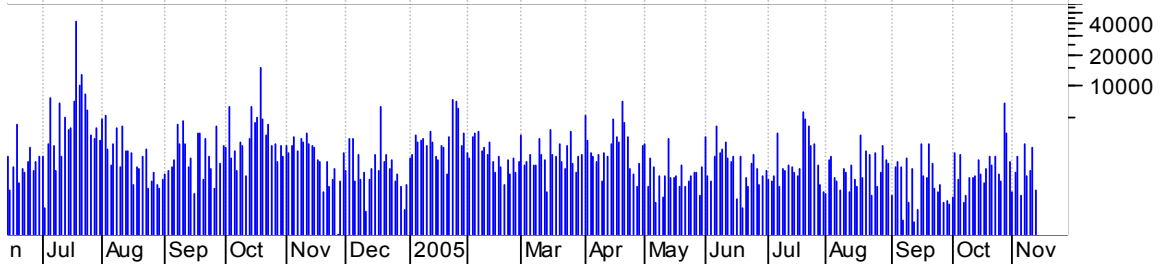
CTHR symm. tri. / buy on upside brkout thru dotted red line on increased volume

Charles & Colvar (25.7700, 26.4900, 25.2800, 26.0800 +0.2800)



DSPG sloppy asc. tri. (discounting spike day) (better seen on wkly chart) / buy on upside brkout on increased volume

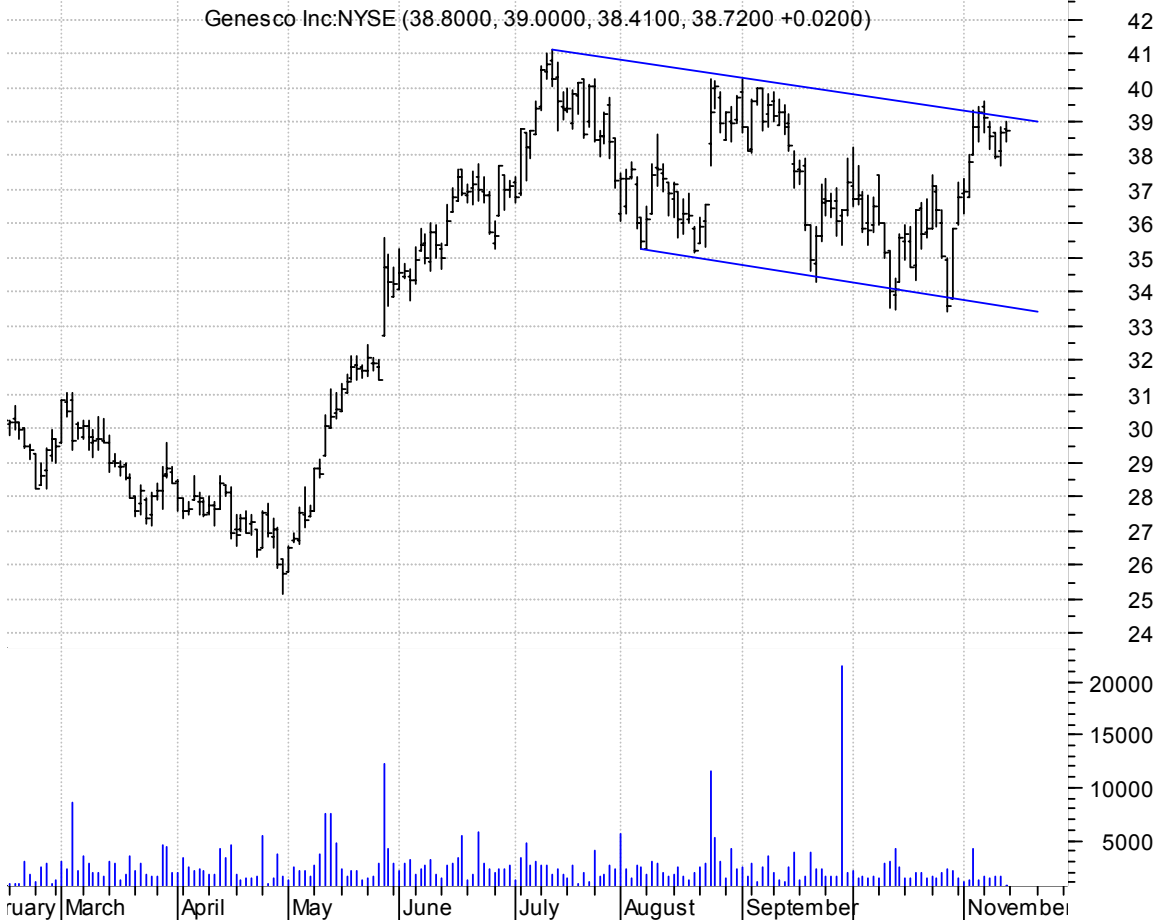
DSP Group Inc:OT (26.3600, 26.5000, 26.0100, 26.1400 -0.2500)



EMKR h. & sh. / you would typically sell on a downside brkout (but don't since it's such a cheap stock), instead, buy on upside brkout (dotted red line -- pattern failure) on increased volume [h. & sh. pattern failures will often make sharp upside brkouts]

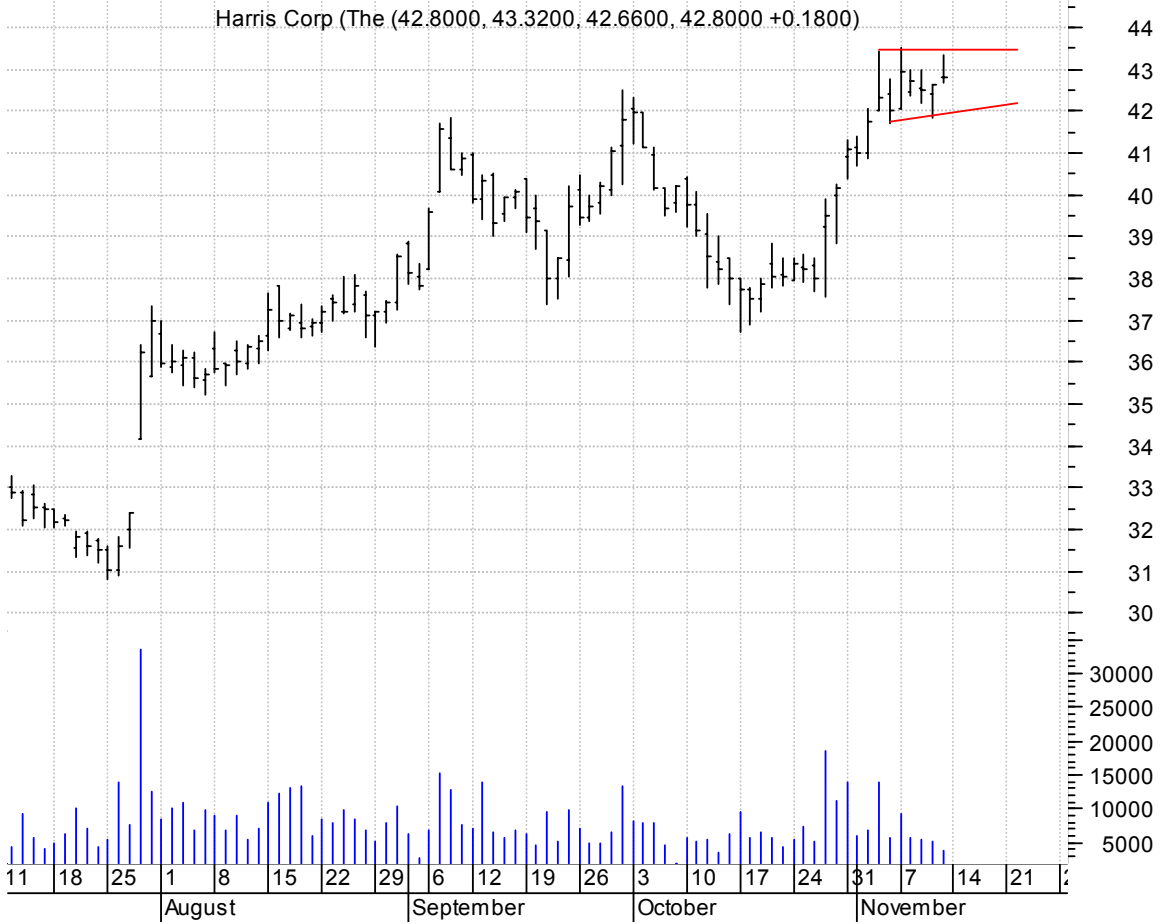


GCO big bull flag (better seen on a wkly chart) / buy on upside brkout on increased volume



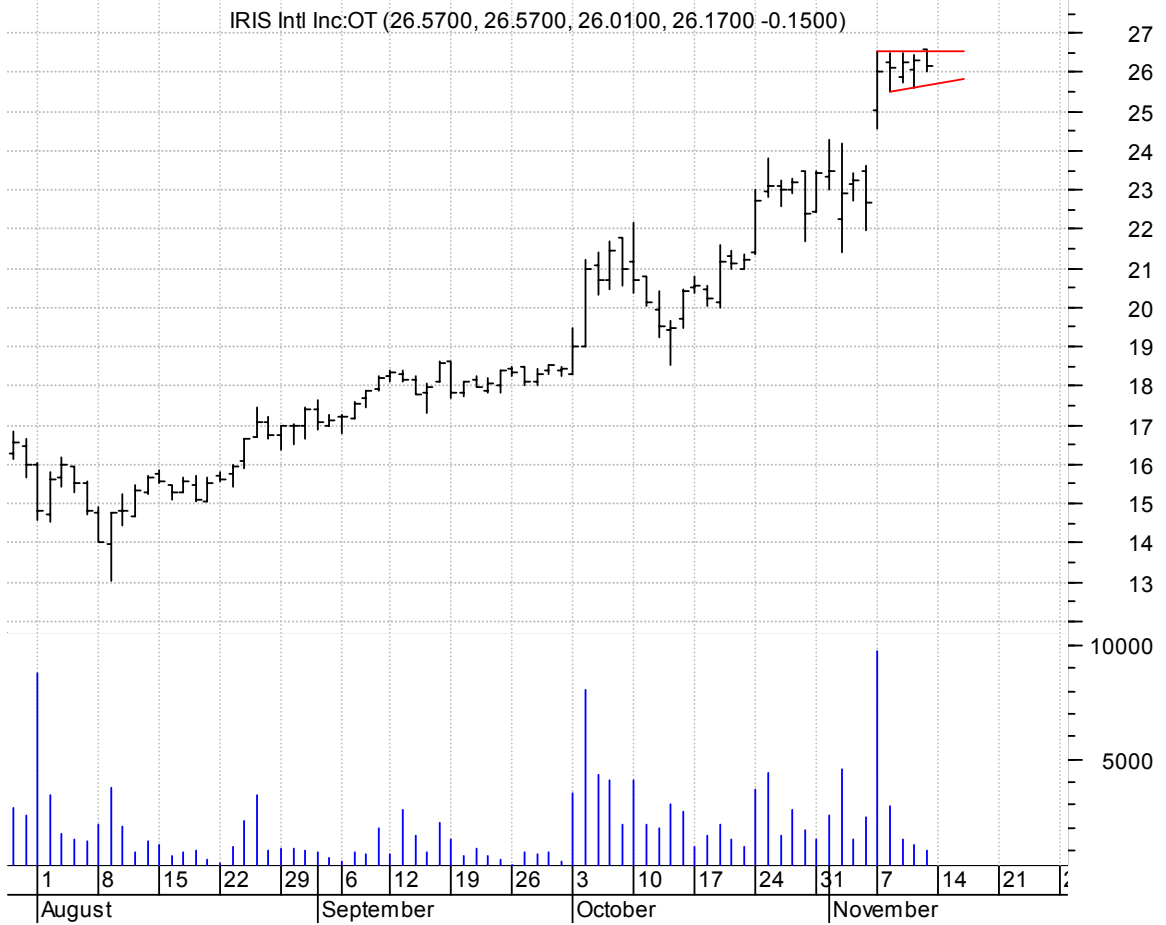
HRS asc. tri. preceded by 'pole-like' move / buy on upside brkout on increased volume

Harris Corp (The (42.8000, 43.3200, 42.6600, 42.8000 +0.1800)



IRIS asc. tri. preceded by 'pole-like' move / buy on upside brkout on increased volume

IRIS Intl Inc:OT (26.5700, 26.5700, 26.0100, 26.1700 -0.1500)



LECO symm. tri. / buy on upside brkout on increased volume

Lincoln Electric (40.2800, 40.6500, 40.1200, 40.3200 +0.000)

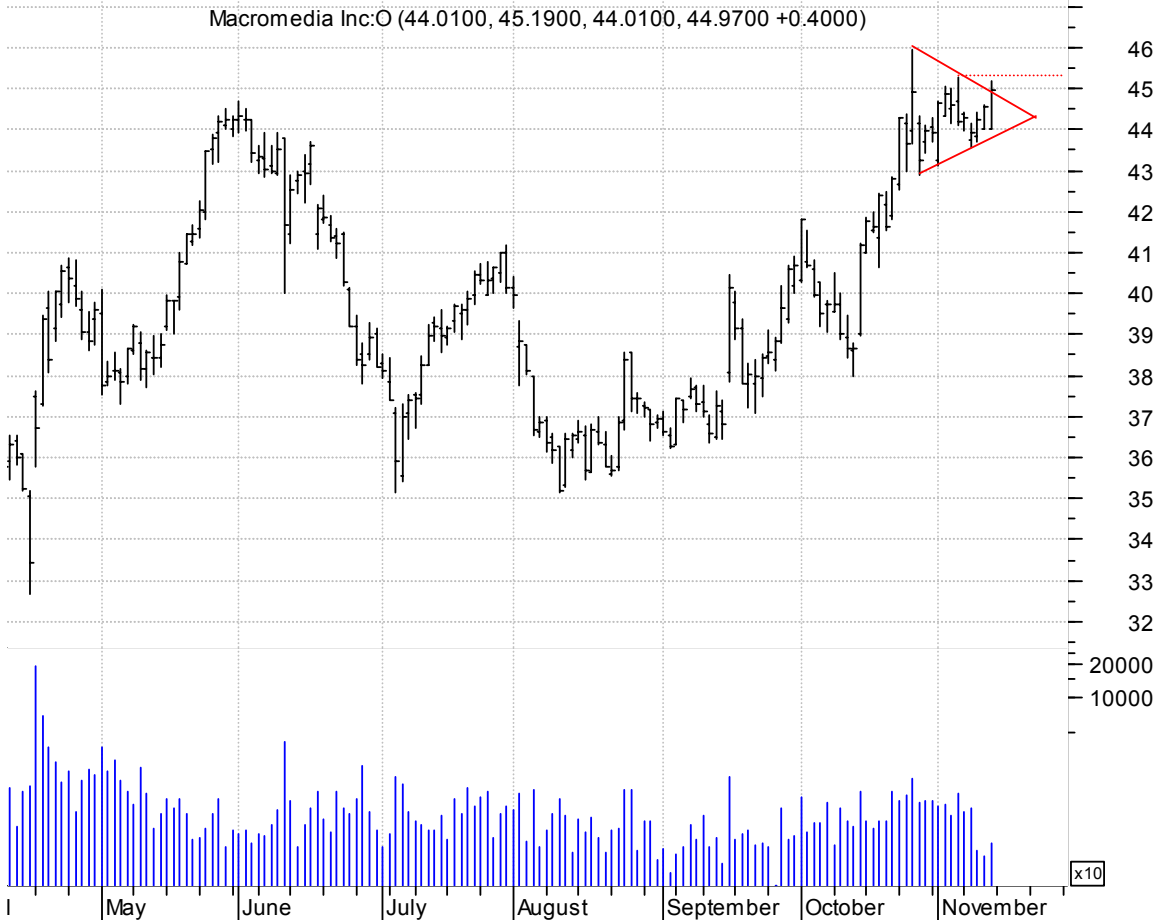


LEXR sloppy asc. tri. / buy on upside brkout on increased volume

LEXAR MEDIA INC: (7.5800, 7.8300, 7.5700, 7.6400 +0.0800)



MACR symm. tri. preceded by 'pole-like' move / buy on upside brkout thru dotted red line on inc. vol.



MINI symm. tri. / buy on upside brkout thru dotted red line on increased volume



MO symm. tri. / buy on upside brkout on increased volume

Altria Group:NYS (74.6800, 74.8500, 74.2700, 74.8500 +0.3400)



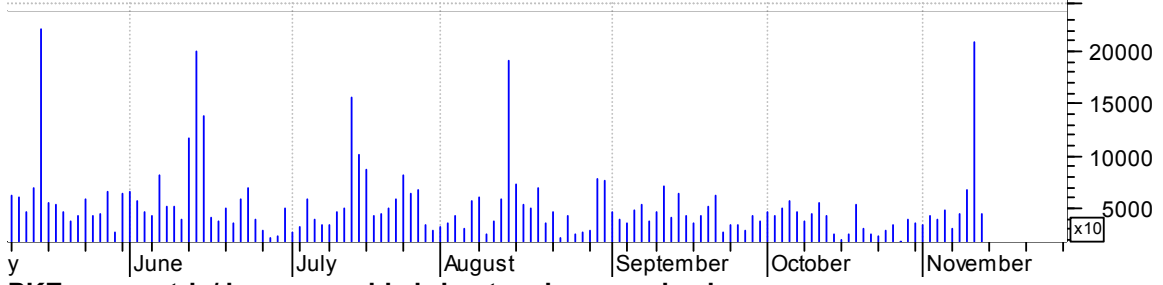
MSSR symm. tri. / buy on upside brkout on increased volume

McCormick & Schm (22.2200, 22.2200, 21.2900, 21.5200 -0.7800)



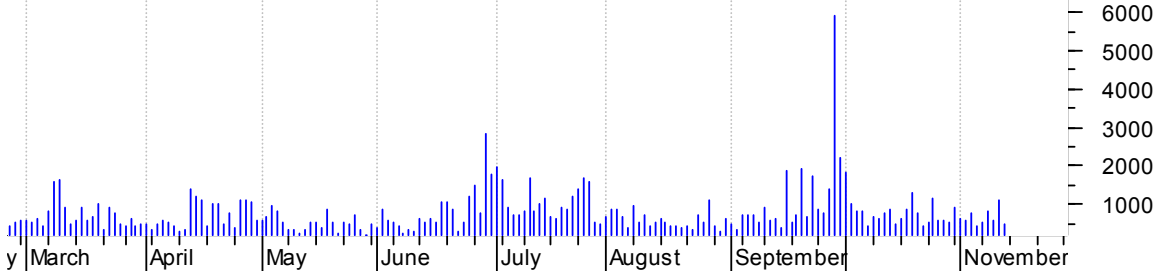
NVDA sloppy asc. tri. (discounting spike day) / buy on upside brkout thru dotted red line on inc. vol.

Nvidia Corp:OTC (33.7800, 34.4400, 33.6300, 34.0400 +0.5500)

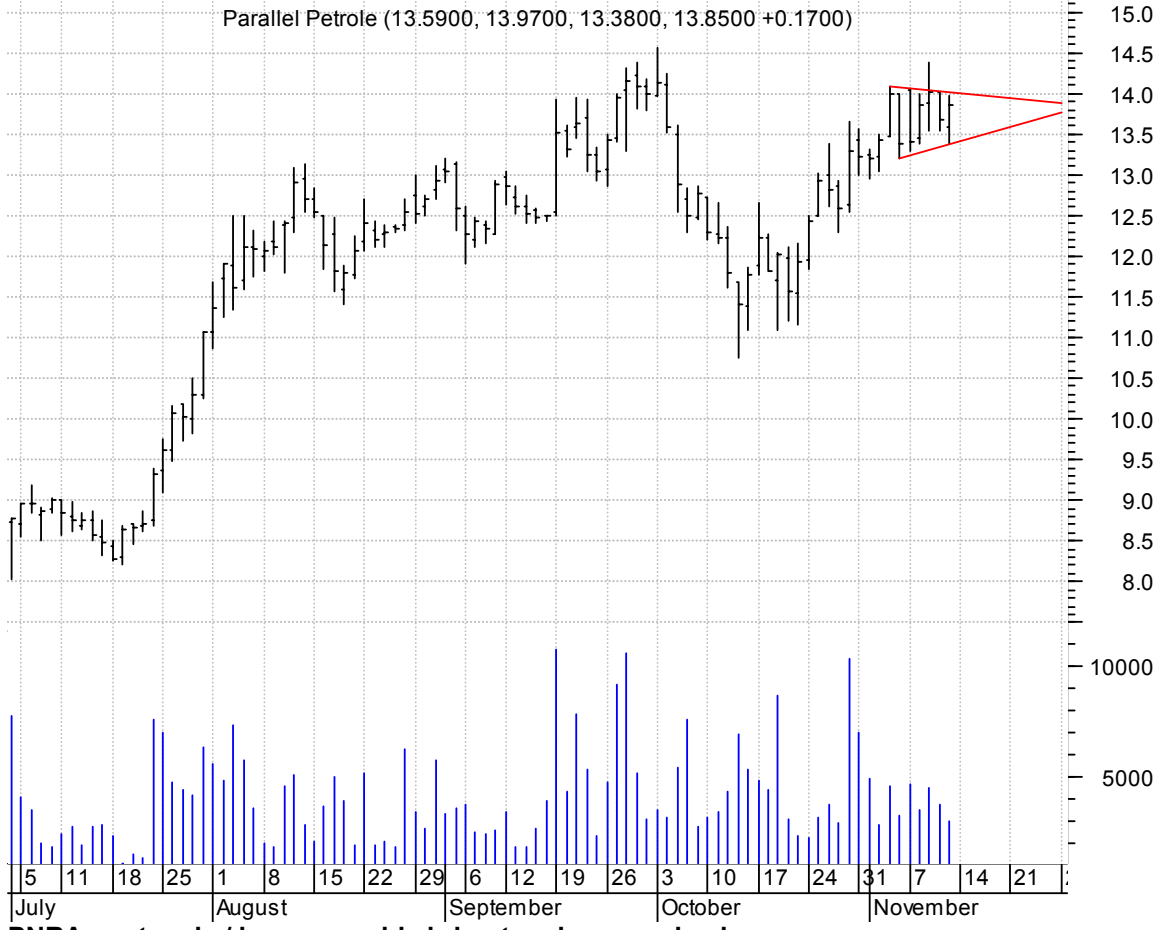


PKE symm. tri. / buy on upside brkout on increased volume

Park Electrochem (25.8000, 25.9500, 25.4900, 25.6400 -0.1400)



PLLL sloppy symm. tri. (discounting spike day) / buy on upside breakout on increased volume

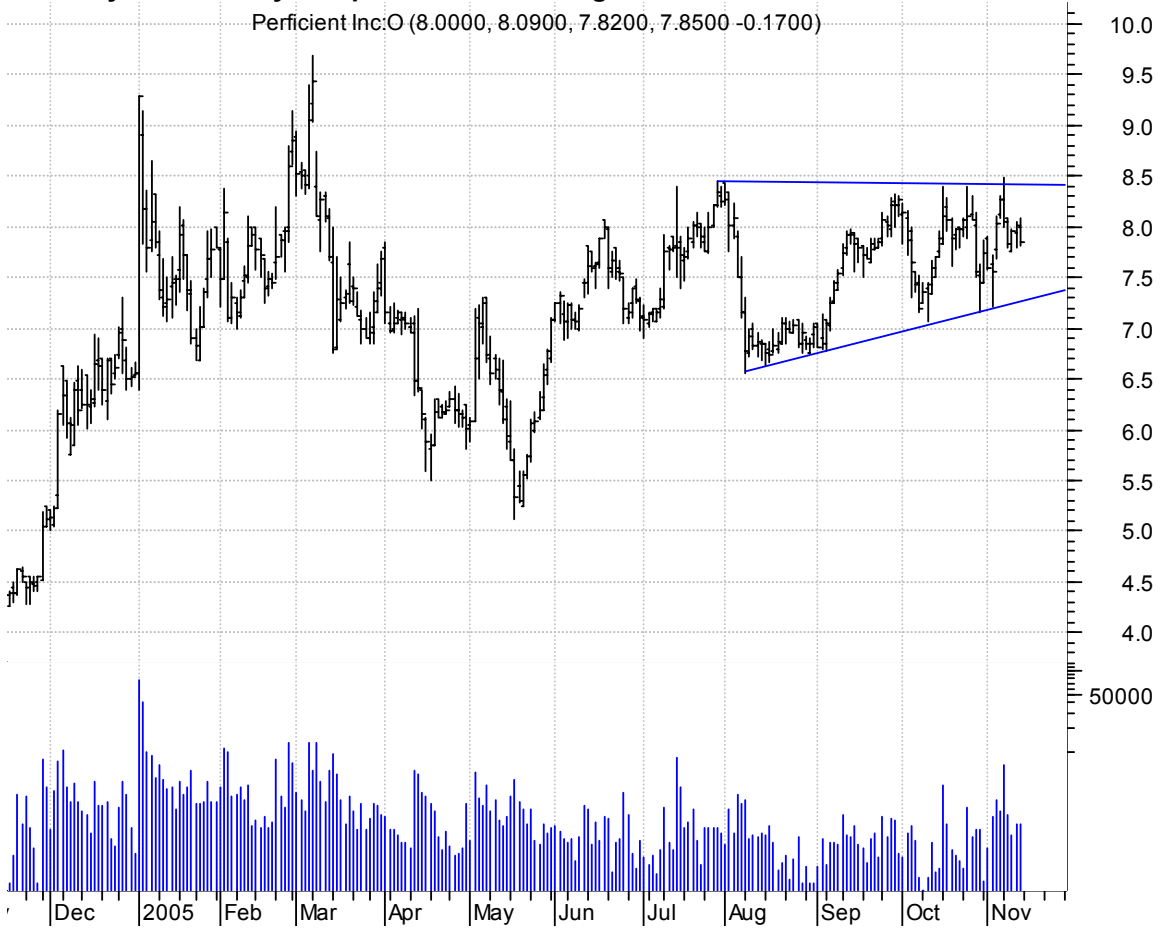


PNRA rectangle / buy on upside breakout on increased volume



PRFT symm. tri. / buy on upside brkout on larger than normal volume

Perficient Inc:O (8.0000, 8.0900, 7.8200, 7.8500 -0.1700)

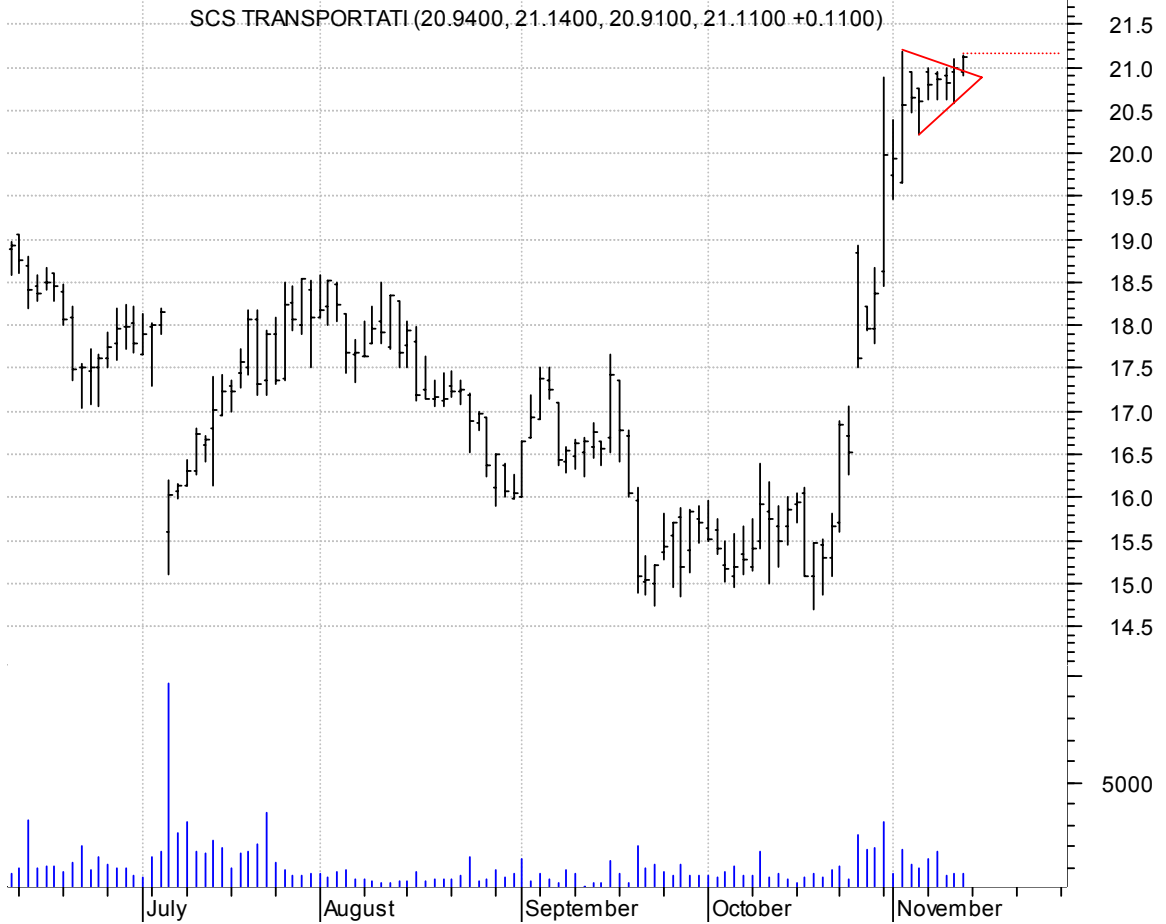


RNWK bull pennant / buy on upside brkout on increased volume

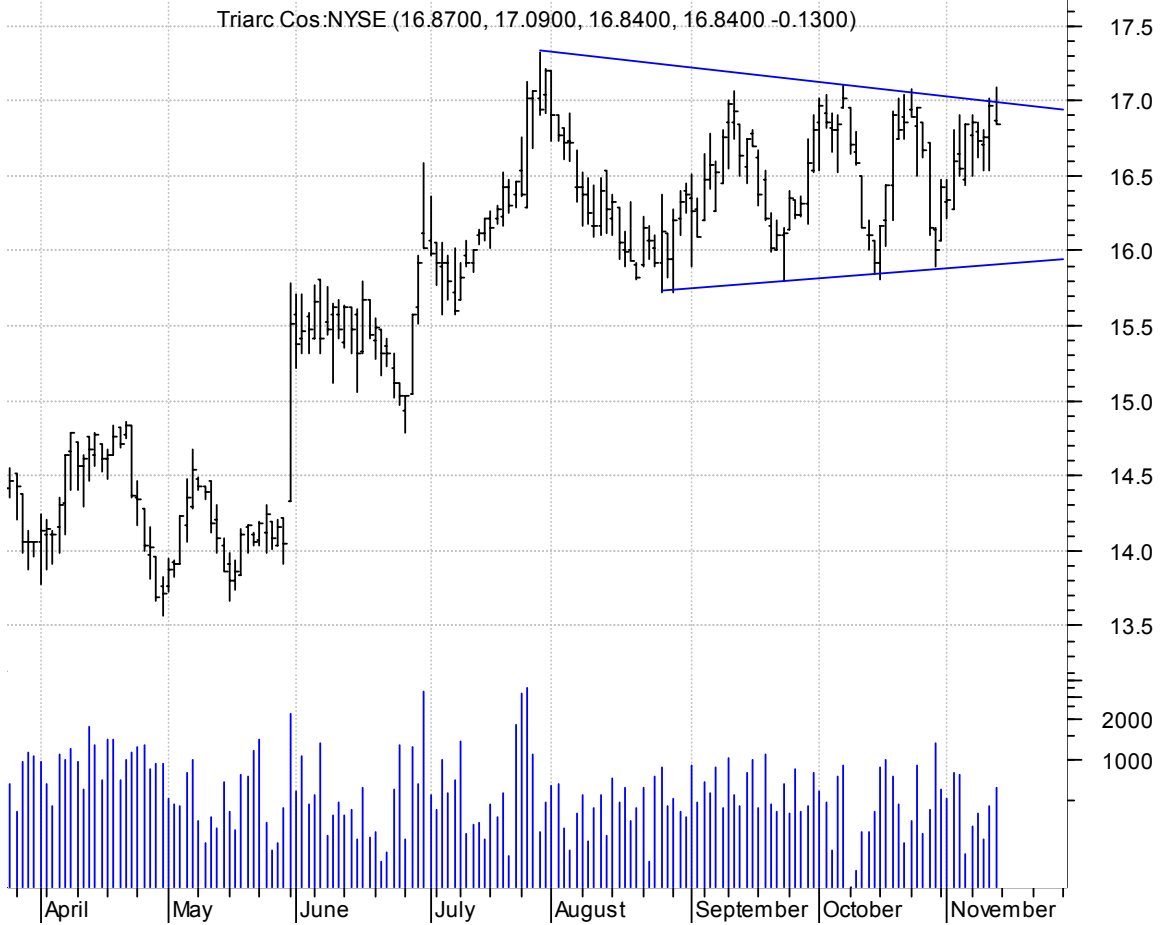
Realnetworks Inc (7.9300, 8.1100, 7.8700, 8.0400 +0.0600)



SCST bull pennant / buy on upside follow-thru (dotted red line) on increased volume



TRY symm. tri. / buy on upside breakout on larger than normal volume



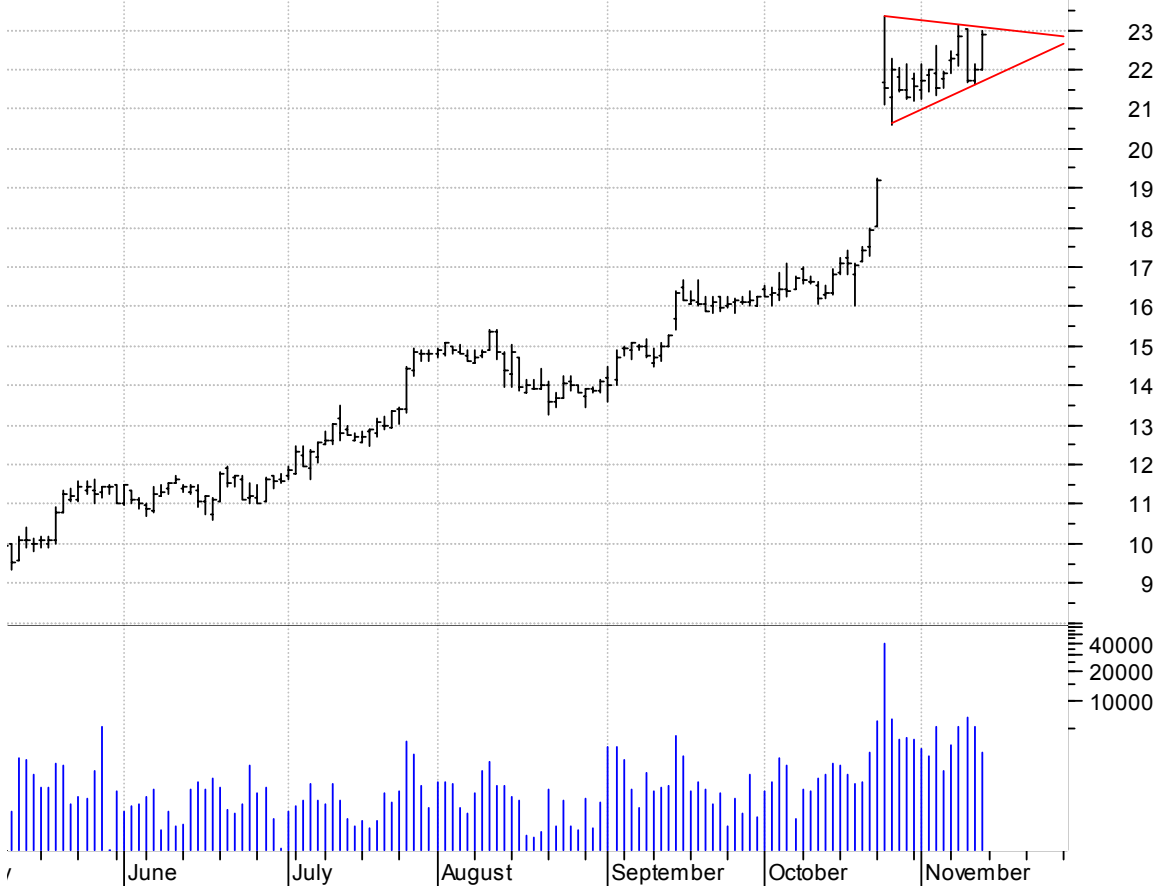
UPL symm. tri. / buy on upside breakout on increased volume

ULTRAPETROLEUM (48.7900, 50.9700, 48.5000, 50.9000 +2.2000)



WIRE bull pennant / buy on upside breakout on larger than normal volume

Encore Wire Corp (21.9800, 22.9900, 21.9800, 22.8900 +0.9000)



chartpatterns.com
Chart Pattern Analysis for Timing the Markets

KMatras@aol.com