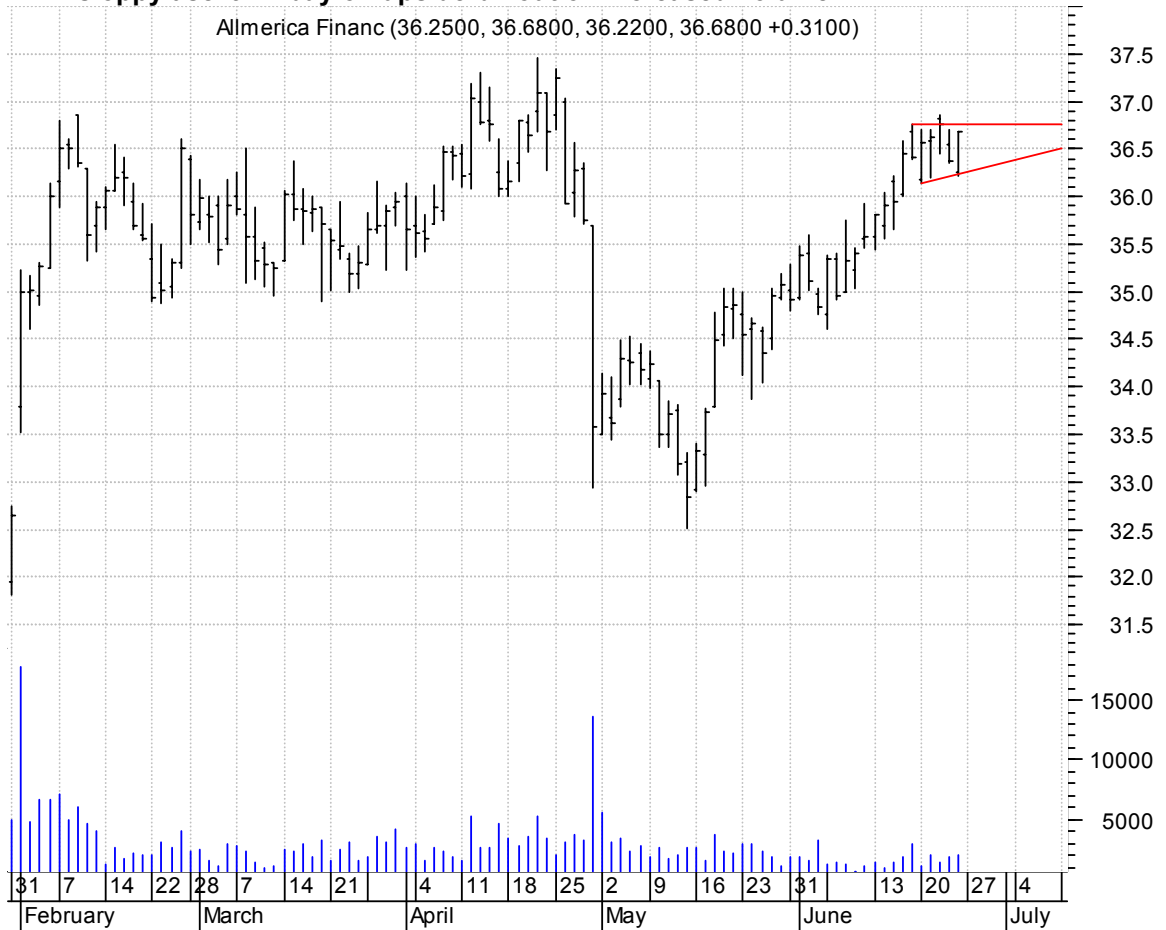


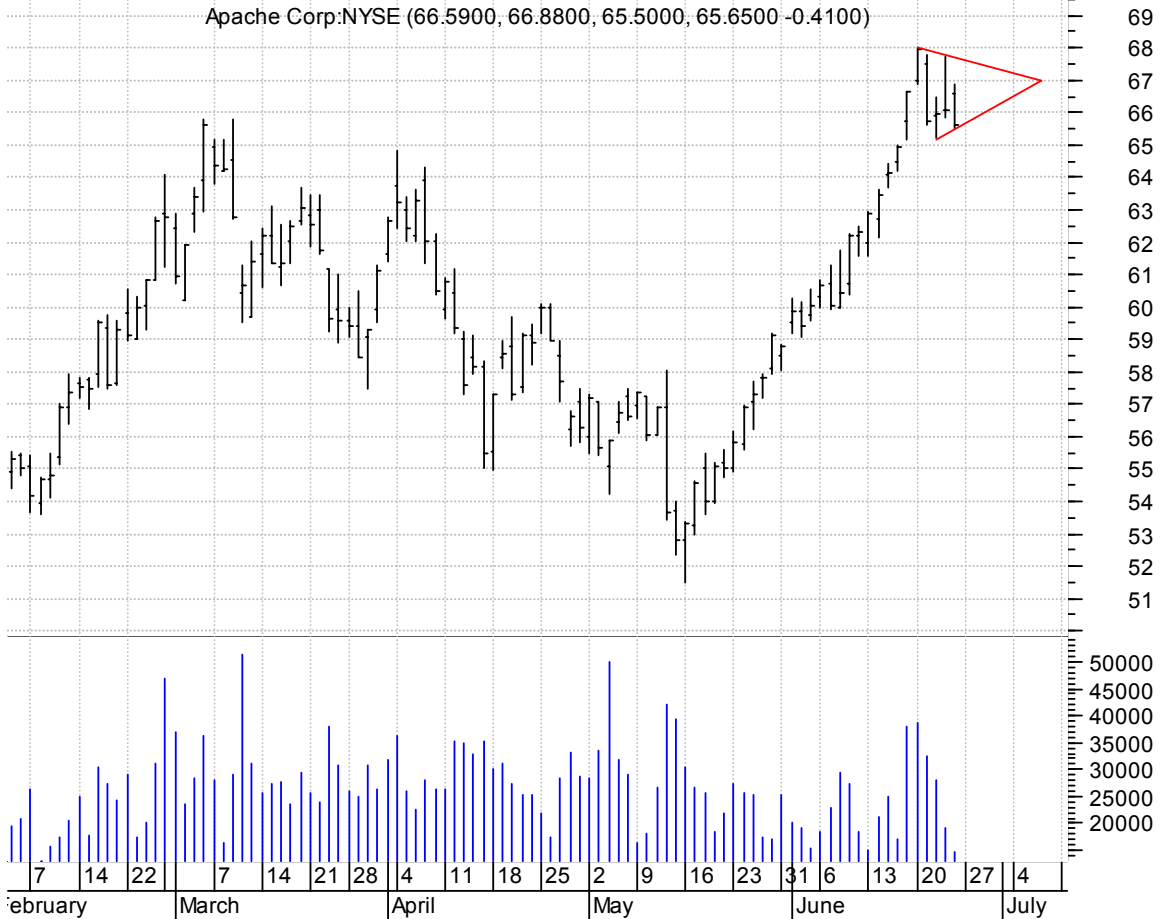
AFC sloppy asc. tri. / buy on upside brkout on increased volume

Allmerica Financ (36.2500, 36.6800, 36.2200, 36.6800 +0.3100)



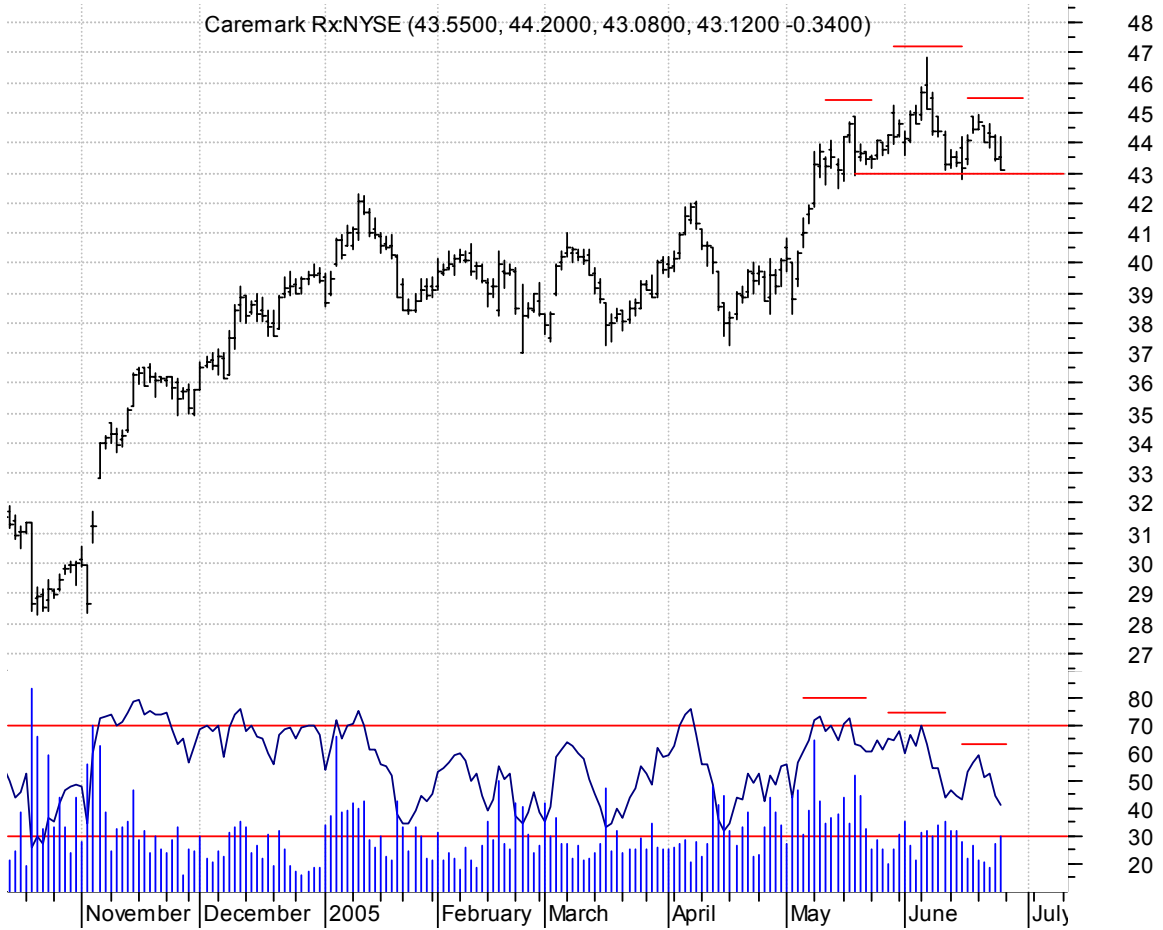
APA symm. tri. preceded by 'pole-like' move / buy on upside brkout on increased volume

Apache Corp:NYSE (66.5900, 66.8800, 65.5000, 65.6500 -0.4100)



CMX h. & sh. / sell on downside brkout on increased volume

Caremark Rx:NYSE (43.5500, 44.2000, 43.0800, 43.1200 -0.3400)



EGOV falling wedge / buy on upside brkout on larger than normal volume

NIC Inc:OTC (4.5300, 4.6500, 4.4900, 4.6000 +0.0500)



ENG symm. tri. / buy on upside brkout on increased volume

Englobal Corp:AM (3.3600, 3.4000, 3.2500, 3.3900 -0.0800)



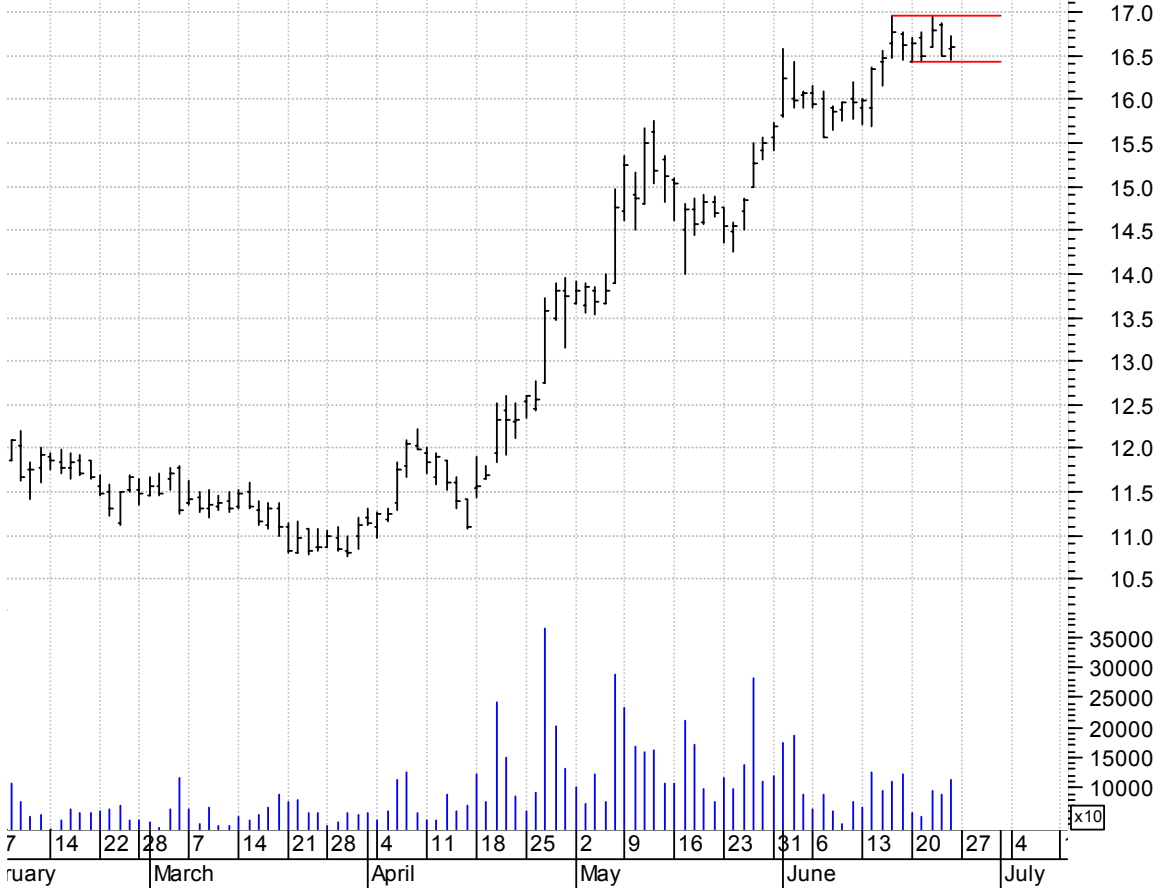
GIL symm. tri. / buy on upside brkout on increased volume

Gildan Activewea (25.2600, 25.5500, 25.1200, 25.3900 +0.0900)



GLW rectangle / buy on upside breakout on increased volume

Corning Inc:NYSE (16.5700, 16.7200, 16.4500, 16.6000 +0.1100)

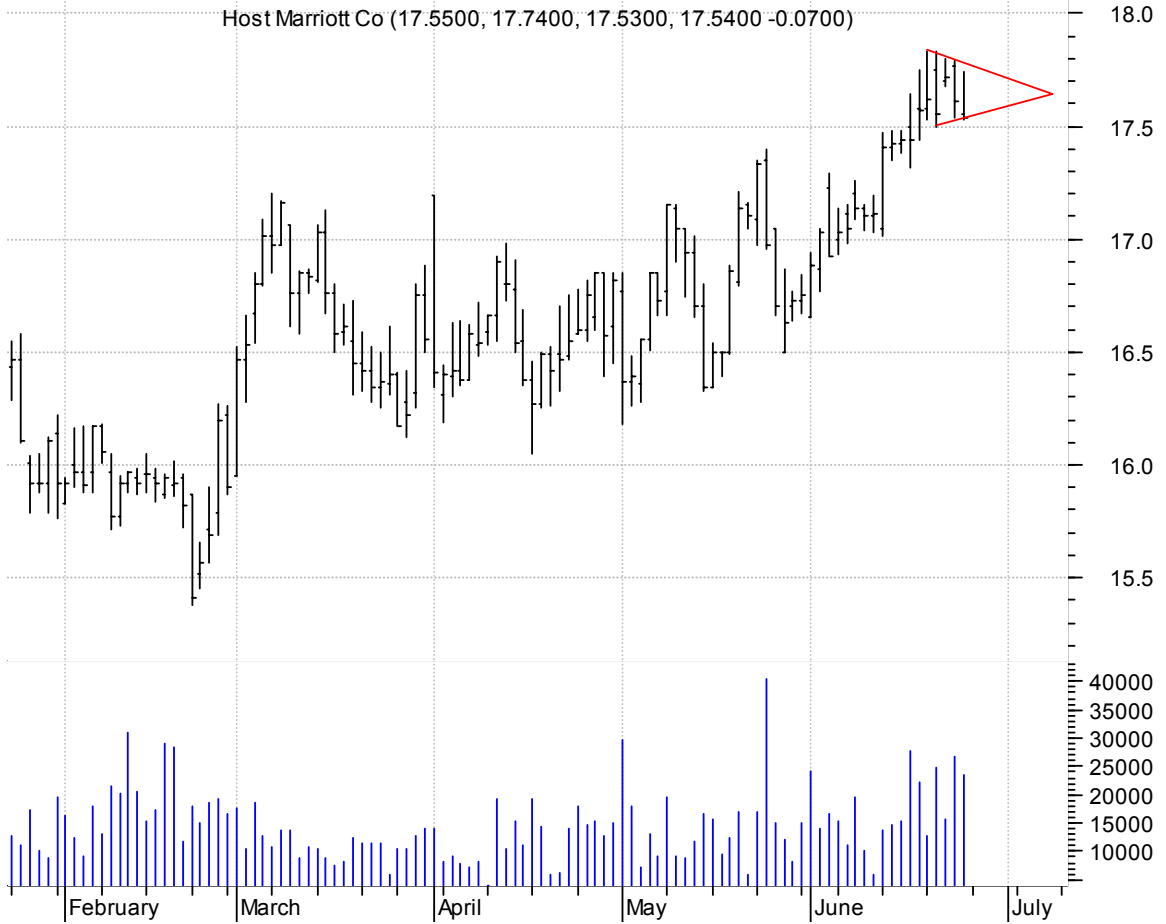


HCSG symm. tri. / buy on upside breakout on increased volume

Health Care Serv (20.5400, 20.6200, 19.7900, 19.9300 -0.4500)



HMT symm. tri. / buy on upside breakout on increased volume

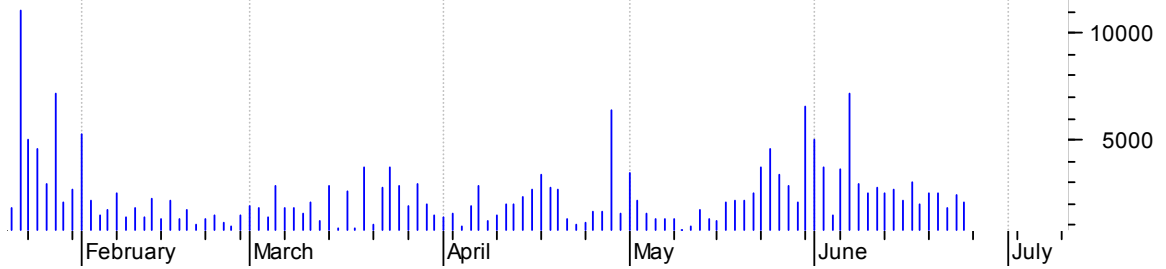


IBM symm. tri. preceded by 'pole-like' move / sell on downside breakout on decent volume



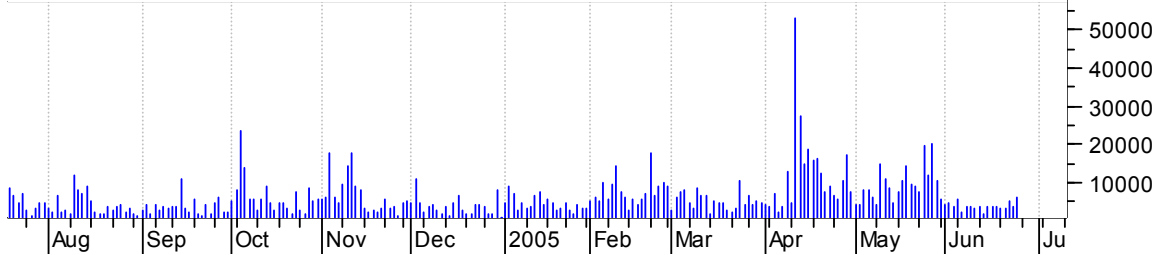
INGR asc. tri. preceded by 'pole-like' move / buy on upside brkout on increased volume

Intergraph Corp: (34.3700, 34.5400, 34.1500, 34.1900 -0.2700)



MDR symm. tri. / buy on upside brkout on increased volume

McDermott Intl I (20.4500, 20.5300, 19.8700, 20.1800 -0.3700)



MMM symm. tri. (preceded by 'pole-like' move) brkout / sell and use top of pattern (desc. trendline) as a failure point

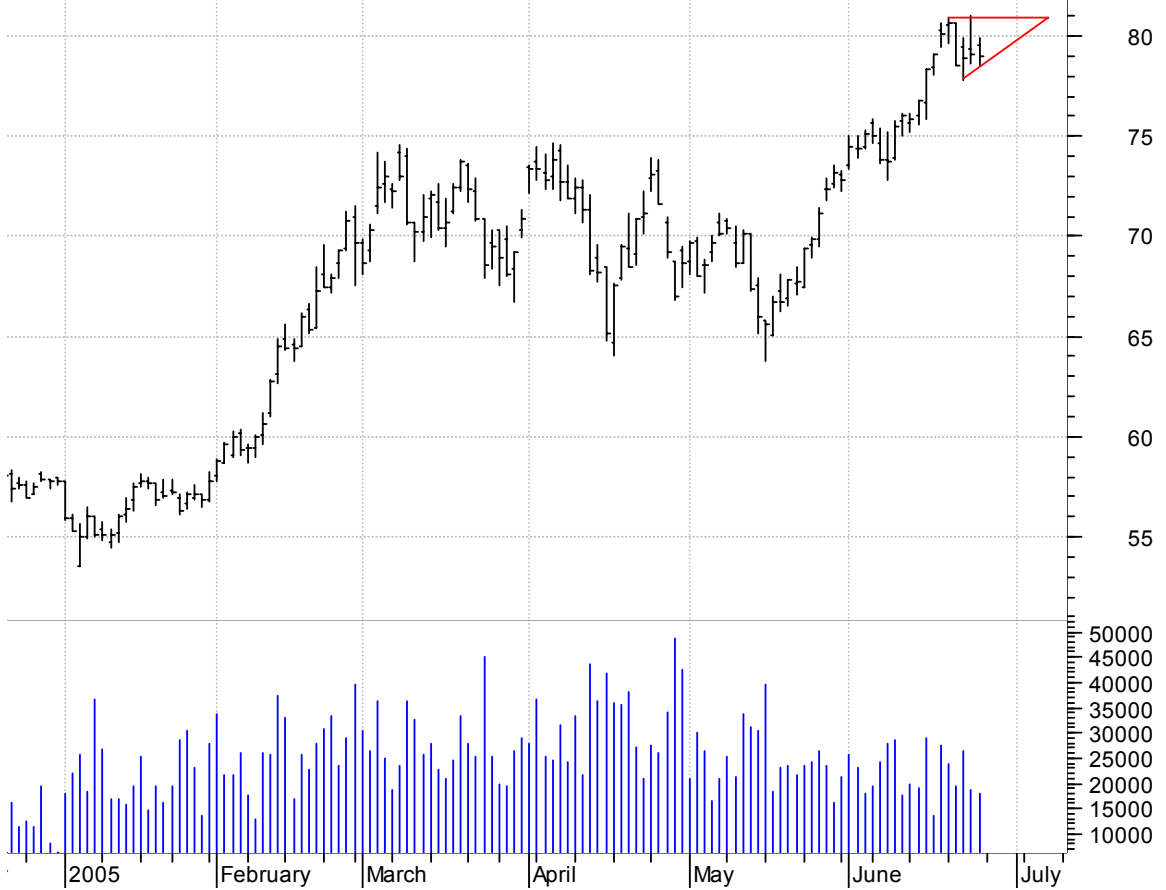


NTAP symm. tri. / buy on upside brkout on increased volume



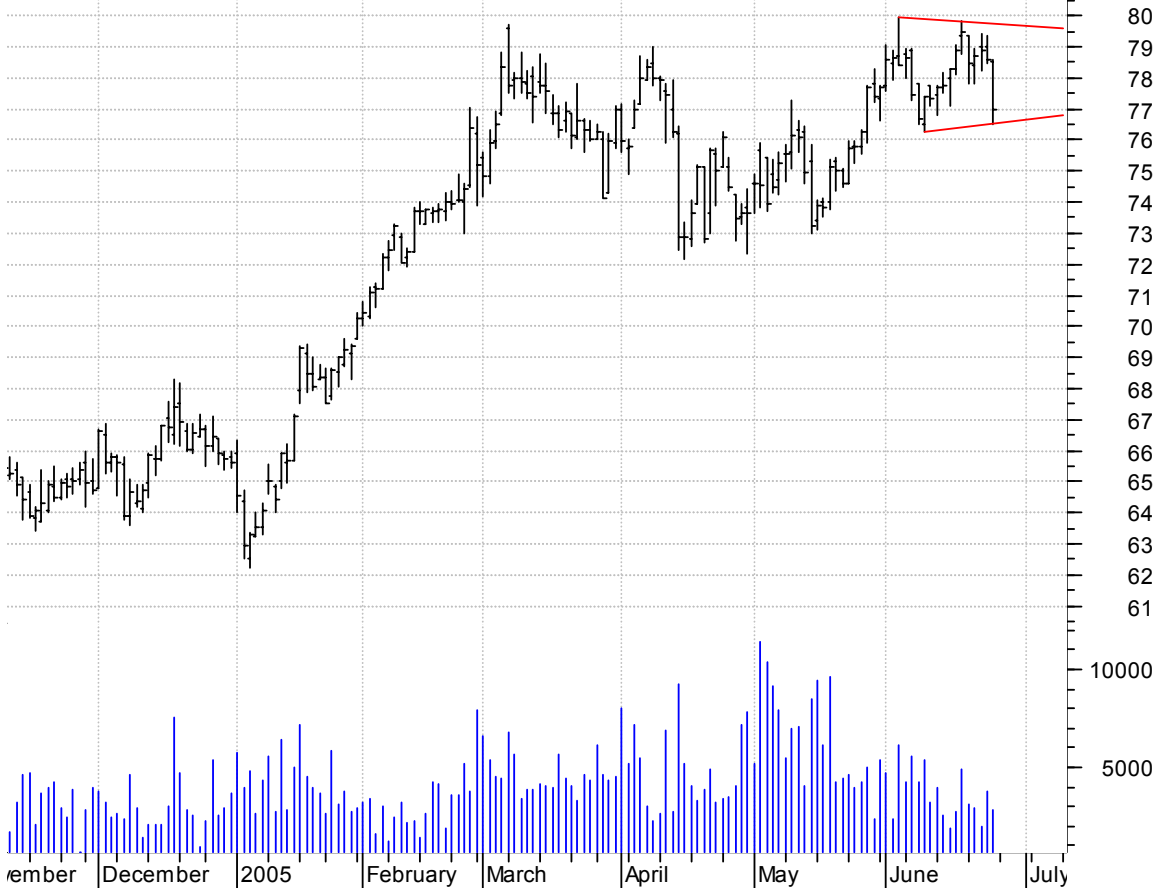
OXY asc. tri. / buy on upside brkout on increased volume

Occidental Petro (79.5000, 79.9100, 78.5000, 78.9600 -0.1500)



PCP symm. tri. / buy on upside brkout on increased volume

Precision Castpa (78.5000, 78.6000, 76.5000, 76.9900 -1.6000)



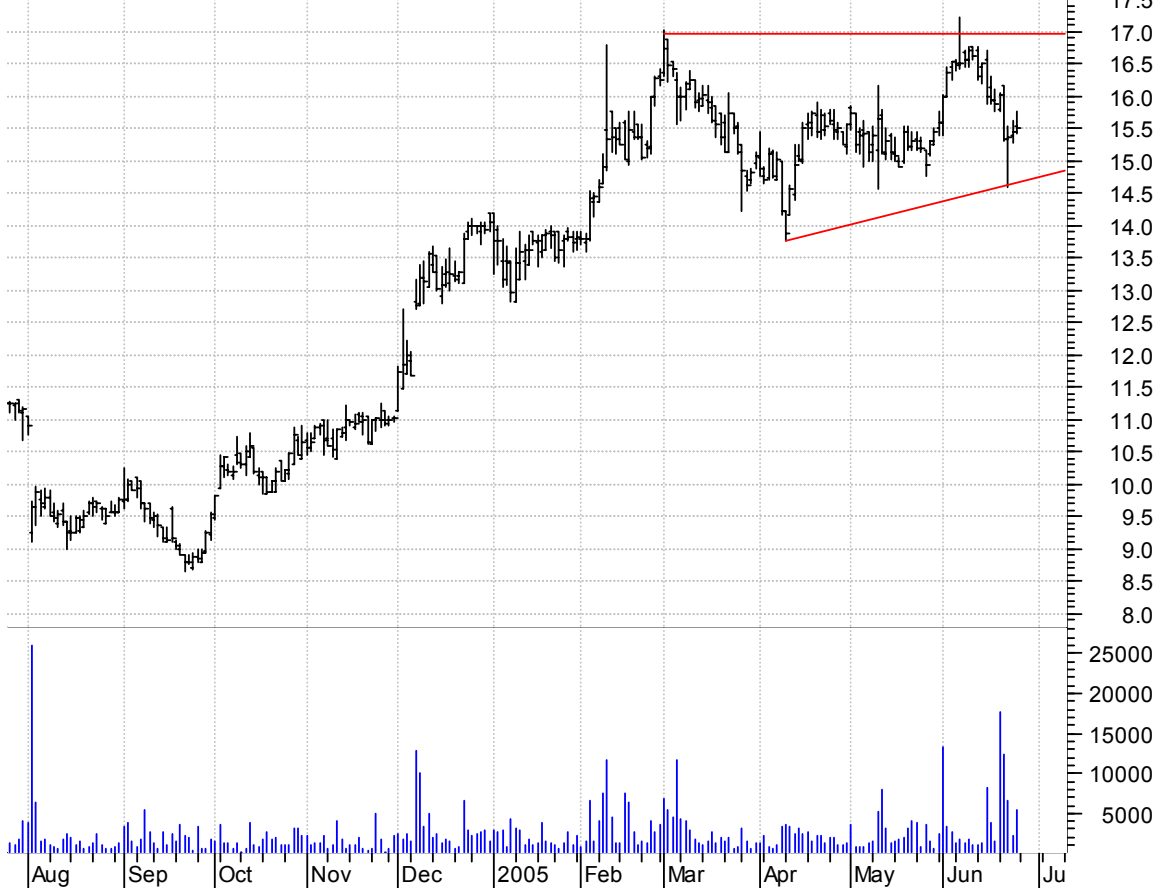
RURL sloppy symm. tri. preceded by 'pole-like' move / buy on upside brkout on increased volume

Rural Netco Corp (7.6000, 7.6000, 7.1200, 7.1500 -0.0700)



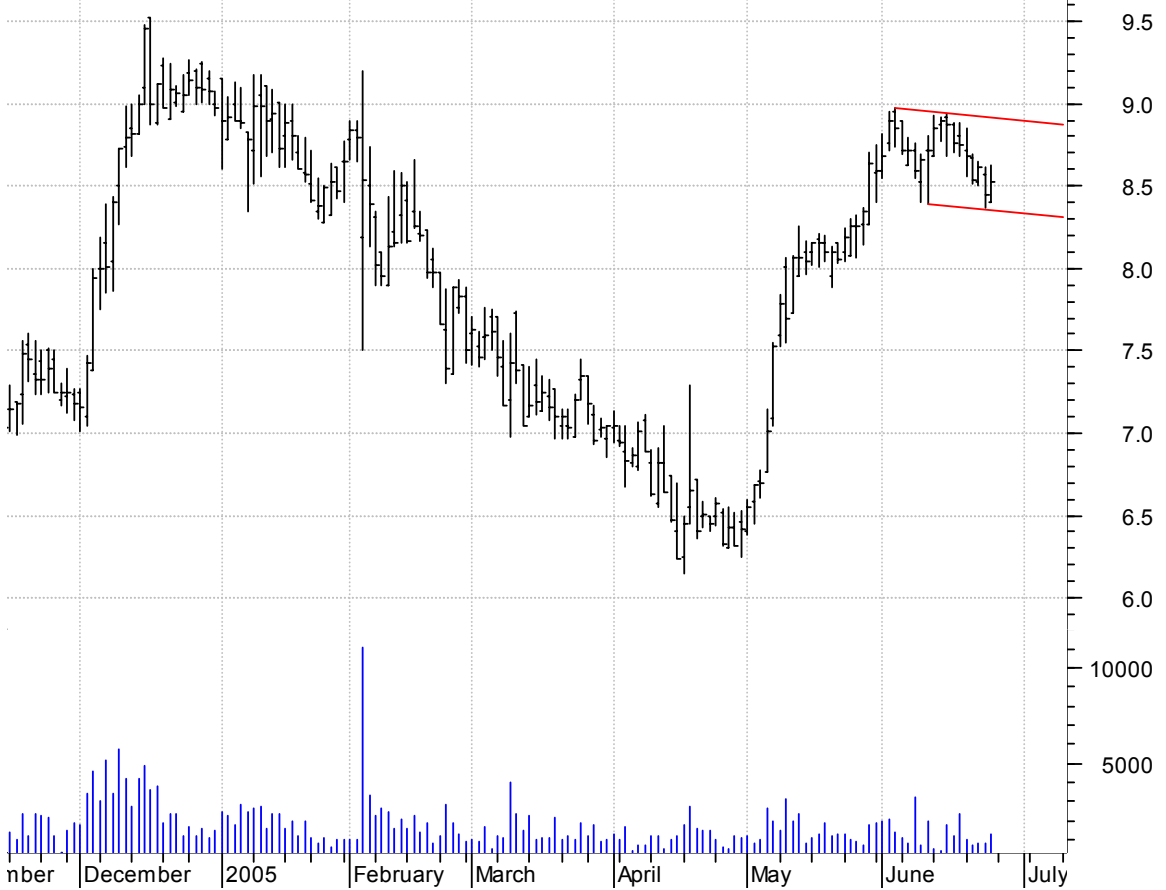
SNRR asc. tri. / buy on upside brkout on larger than normal volume

SUNTERRA CORP:OT (15.5300, 15.7700, 15.4100, 15.5100 +0.0600)



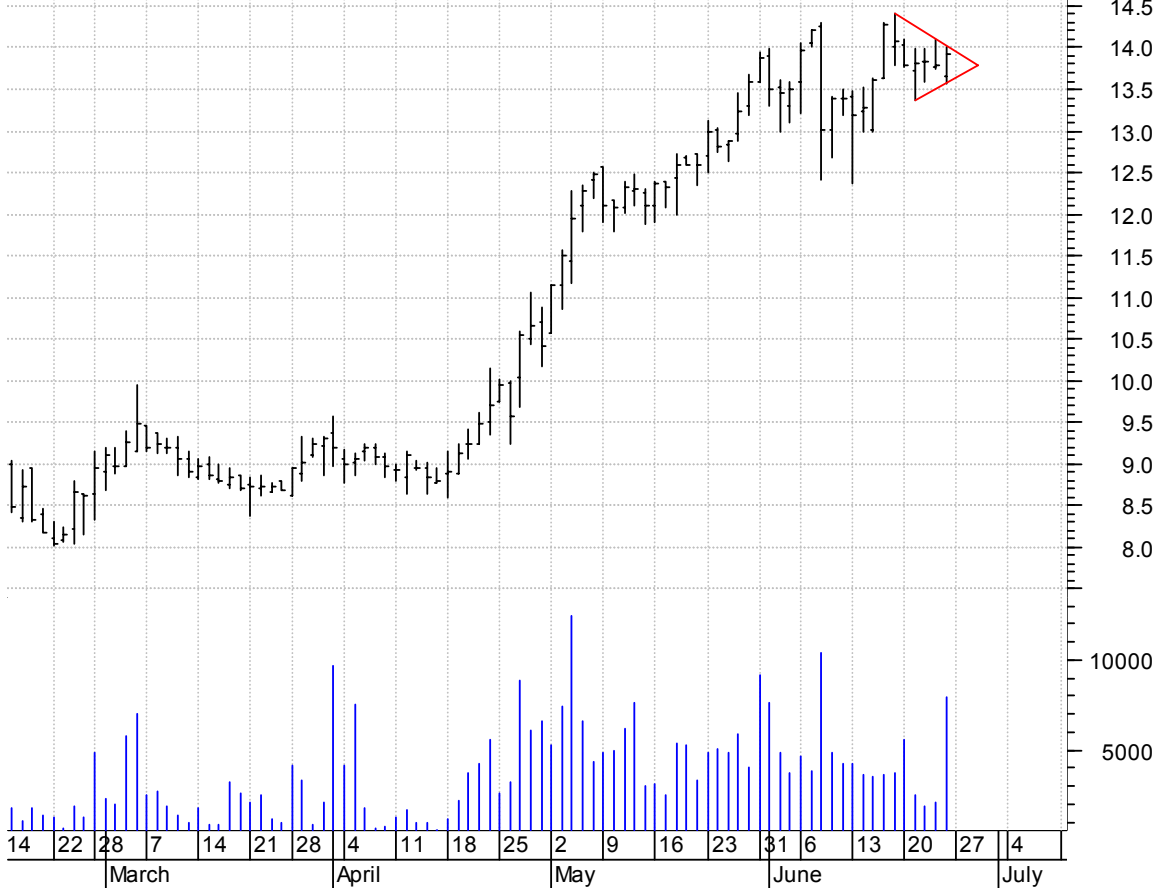
TPTH bullish flagging / buy on upside breakout on increased volume

Tripath Imaging (8.4000, 8.6300, 8.4000, 8.5300 +0.0800)



TZIX symm. tri. / buy on upside breakout on increased volume

The Trizetto Grp (13.6600, 14.0000, 13.5600, 13.9200 +0.1300)



chartpatterns.com
Chart Pattern Analysis for Timing the Markets

KMatras@aol.com