

# ATI bullish flagging / buy on upside breakout on larger than normal volume

Allegheny Techno (22.9700, 23.5000, 22.7400, 23.1400 +0.2900)



**ATMI sloppy asc. tri. (discounting spike days) preceded by 'pole-like' move / buy on upside breakout on increased volume**

Advanced Technol (27.2500, 28.2200, 27.1300, 27.7000 +0.3600)



# BCII sloppy asc. tri. / buy on upside brkout on increased volume

Bone Care Intl I (28.2700, 29.0500, 27.7000, 29.0400 +0.7300)



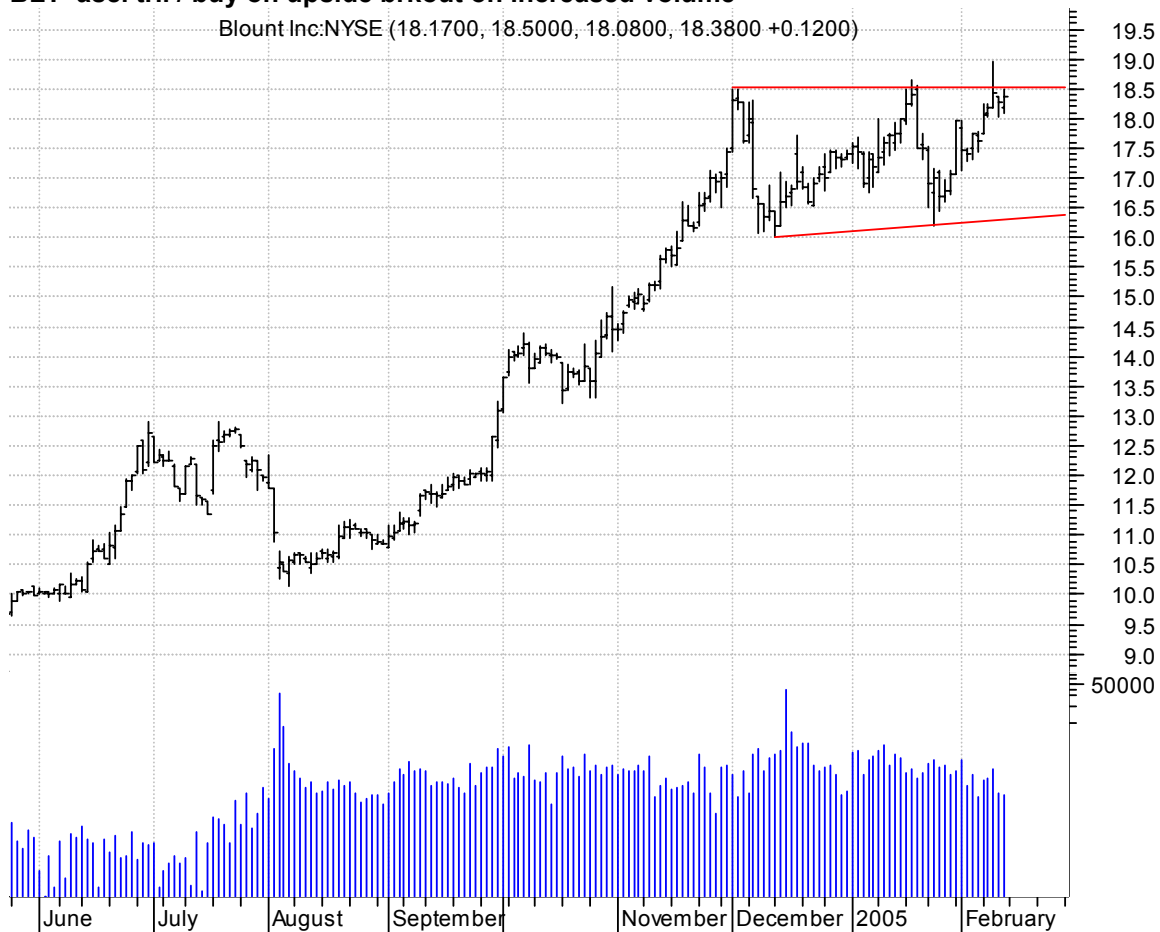
# BEAV asc. tri. / buy on upside brkout on increased volume

BE Aerospace Inc (10.4000, 10.9300, 10.2200, 10.7700 +0.2500)



**BLT asc. tri. / buy on upside brkout on increased volume**

Blount Inc:NYSE (18.1700, 18.5000, 18.0800, 18.3800 +0.1200)

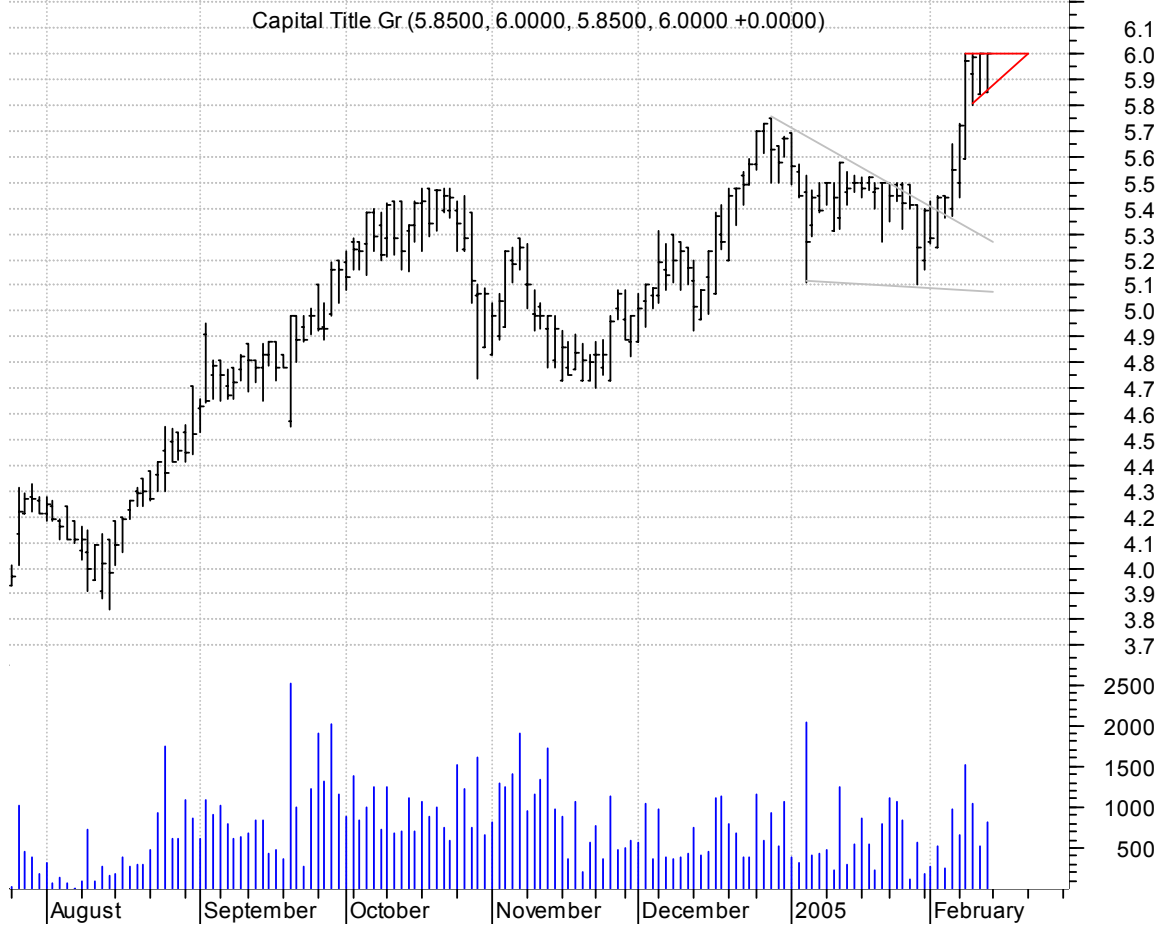


**CMRG symm. tri. / buy on upside brkout on increased volume**

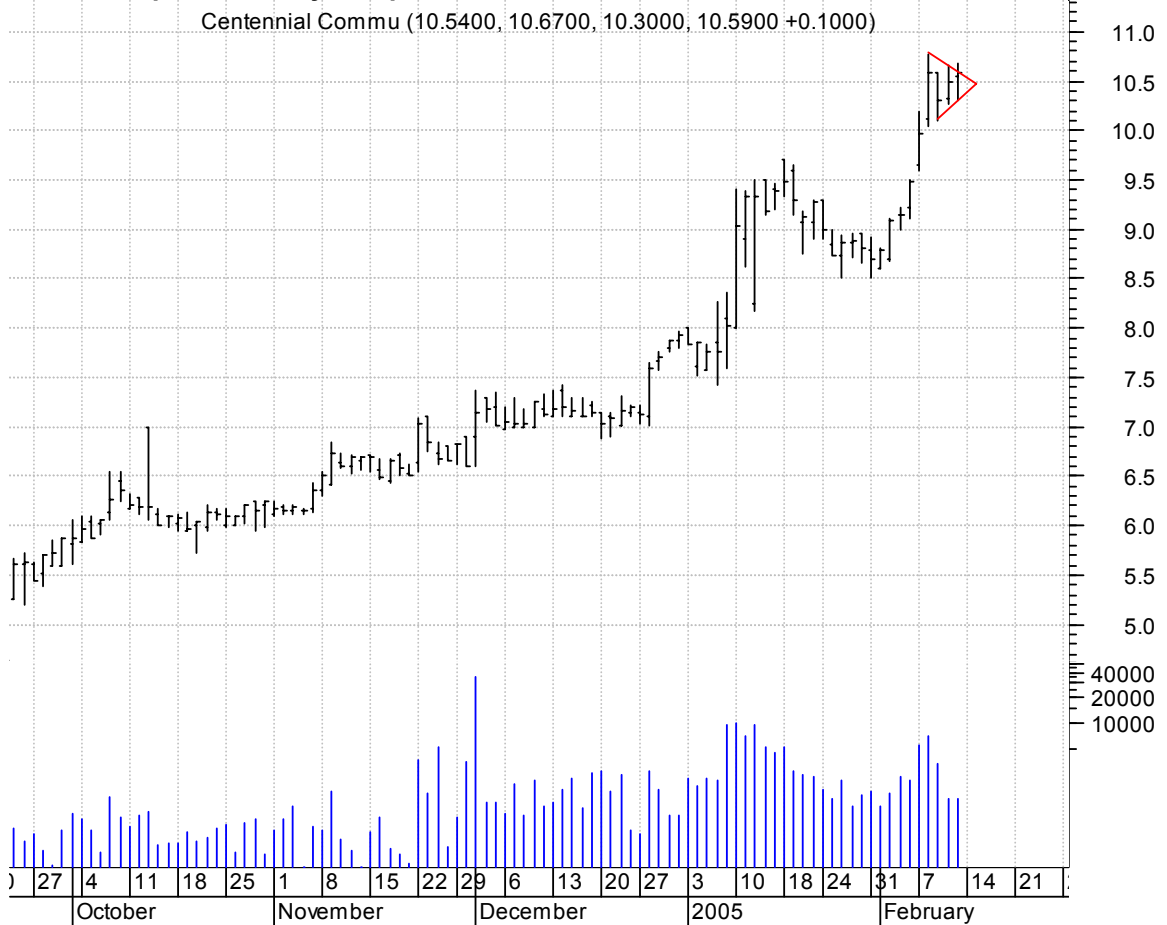
Casual Male Rtl: (5.2500, 5.4800, 5.1800, 5.3000 +0.0600)



# CTGI asc. tri. preceded by 'pole-like' move / buy on upside brkout on increased volume



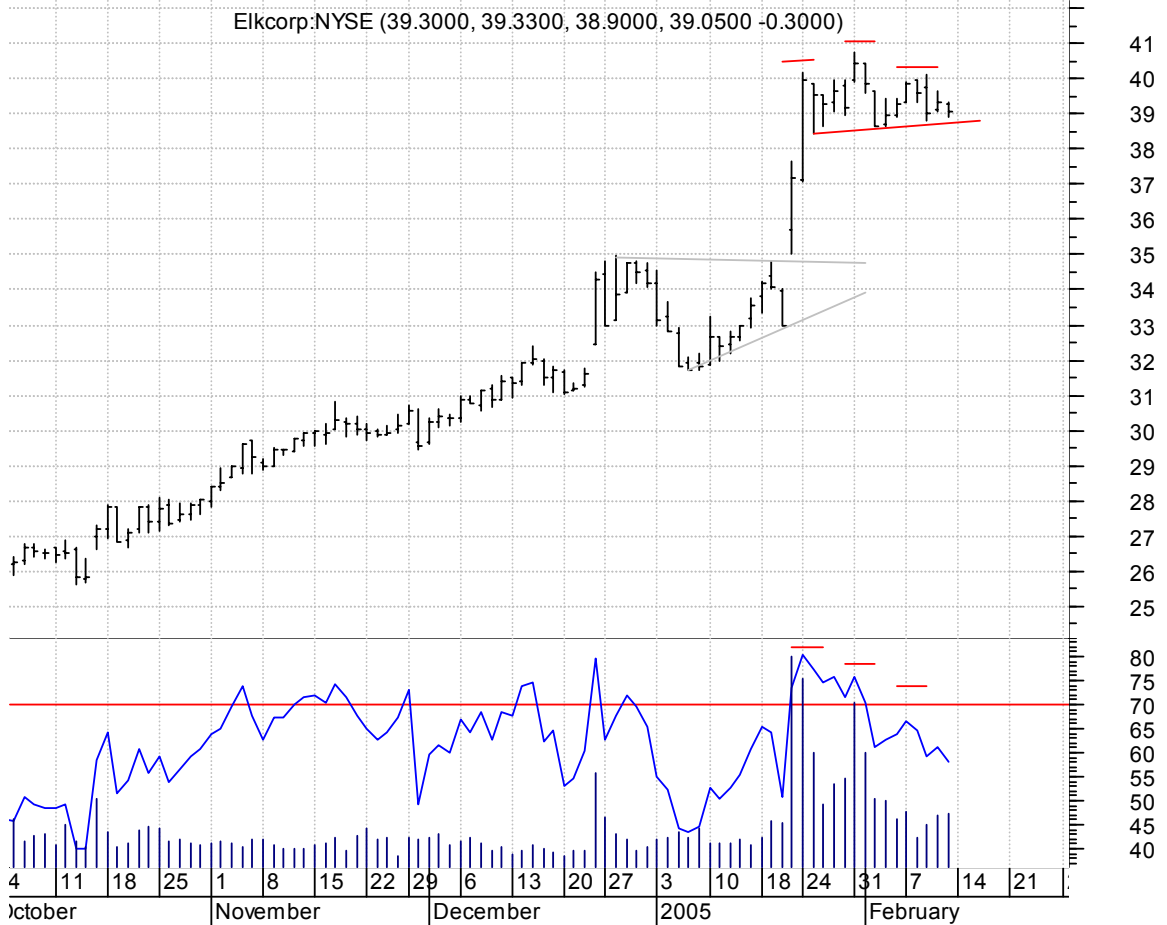
## CYCL bull pennant / buy on upside brkout on increased volume



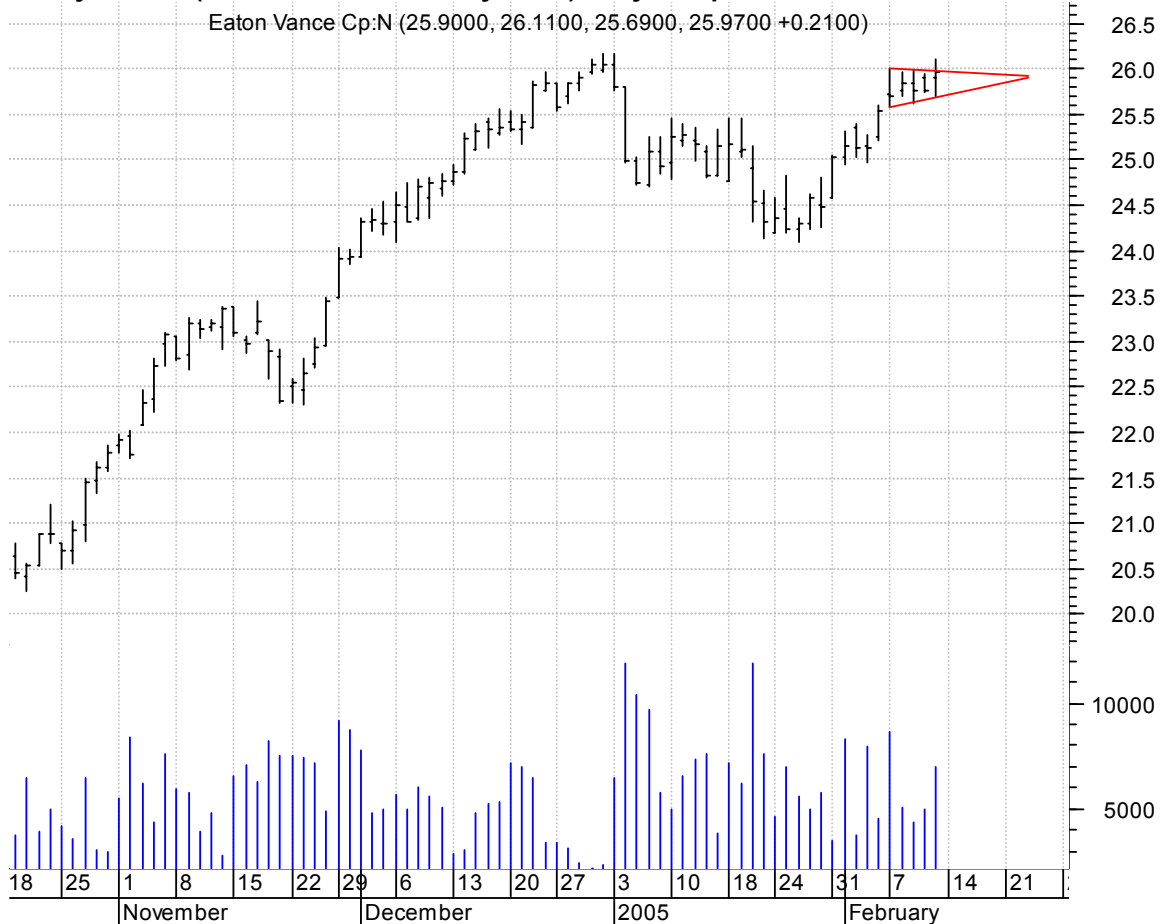
# **DADE symm. tri. / buy on upside brkout on increased volume**



# **ELK h. & sh. / sell on downside brkout on increased volume**



**EV symm. tri. (better seen on intraday chart) / buy on upside brkout on increased volume**



**EXAS rectangle / buy on upside brkout on larger than normal volume**



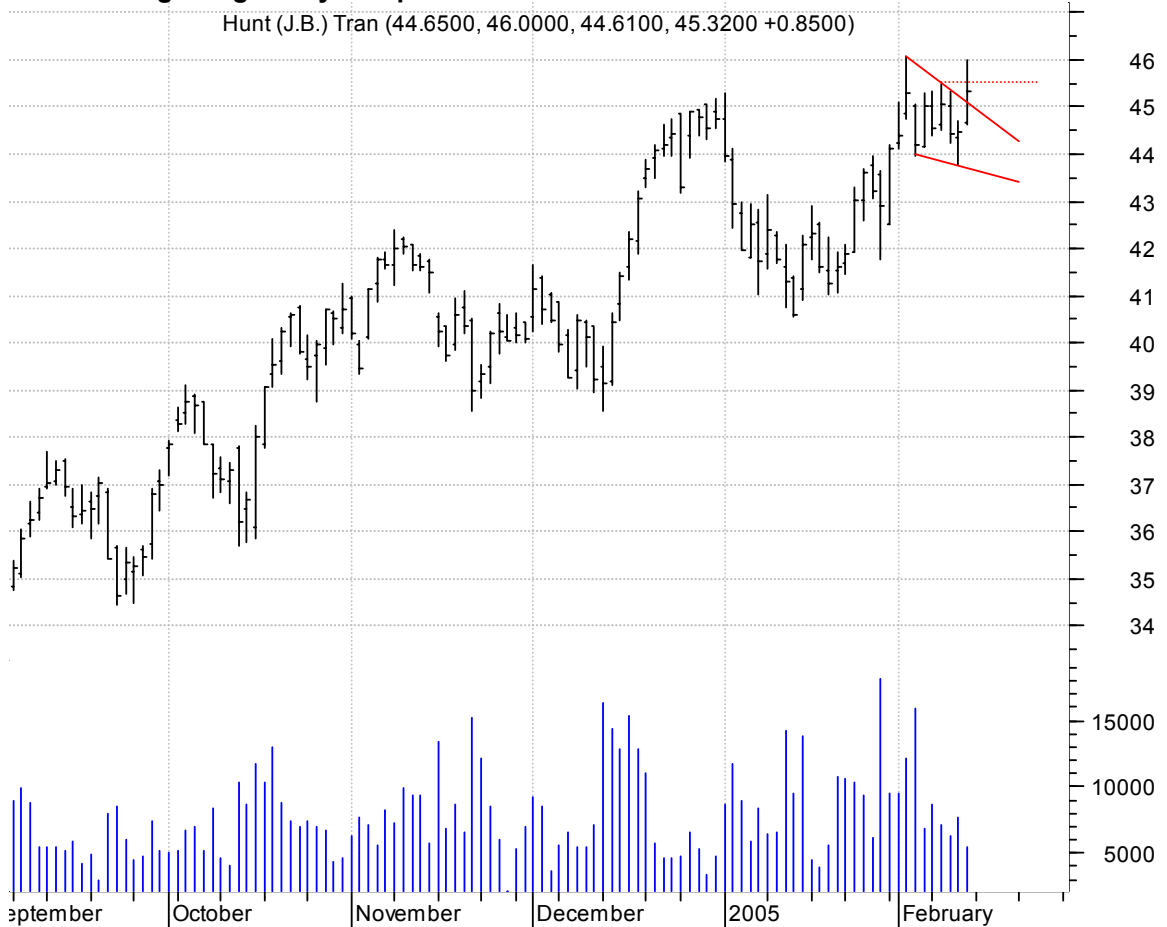
# **FOSL symm. tri. / buy on upside brkout on increased volume**

Fossil Inc:OTC (28.2200, 28.2800, 27.6500, 28.0500 -0.0600)

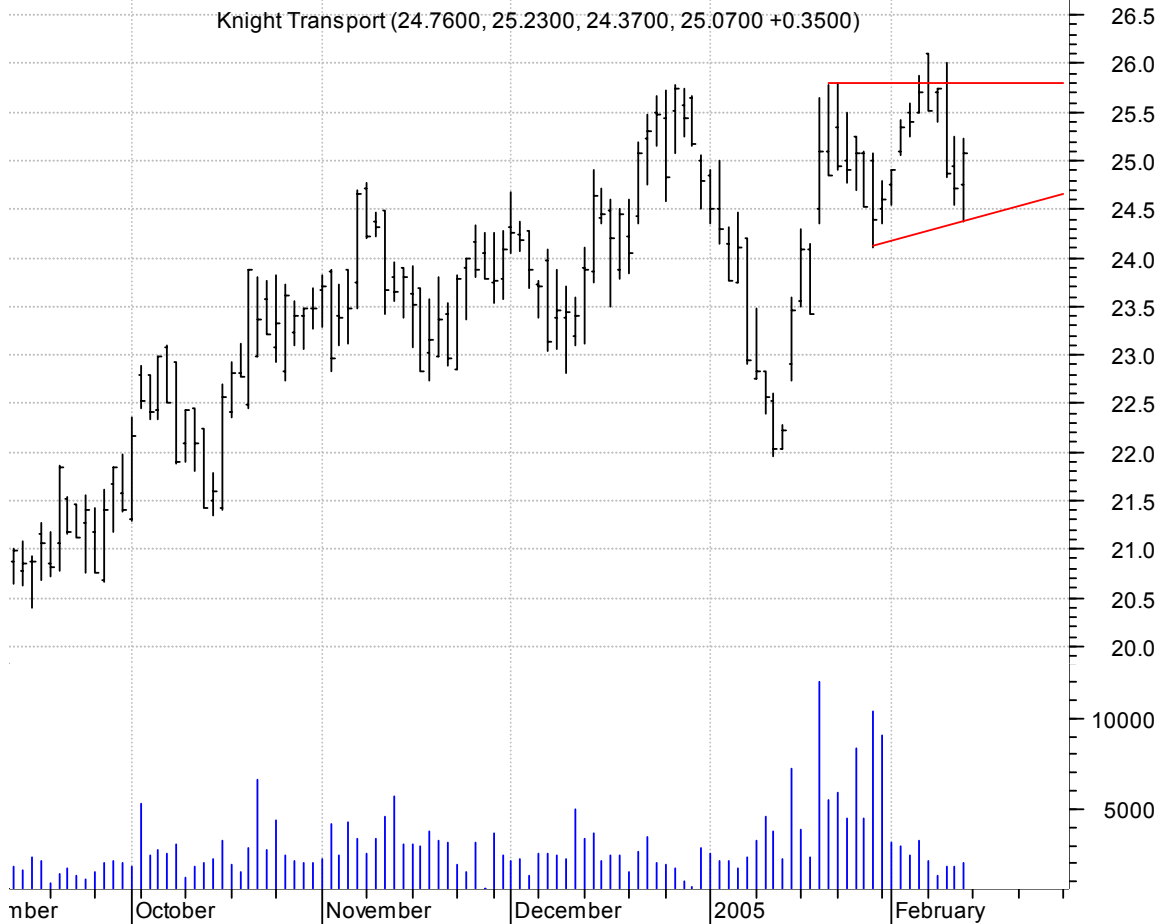


# **JBHT falling wedge / buy on upside brkout thru dotted red line on increased volume**

Hunt (J.B.) Tran (44.6500, 46.0000, 44.6100, 45.3200 +0.8500)



# KNX sloppy asc. tri. / buy on upside brkout on increased volume



# KRON asc. tri. preceded by 'pole-like' move / buy on upside brkout on increased volume





# **KSWS asc. tri. / buy on upside breakout on increased volume**



# **LI symm. tri. / buy on upside breakout on increased volume**



# **NCX symm. tri. / buy on upside brkout on increased volume**



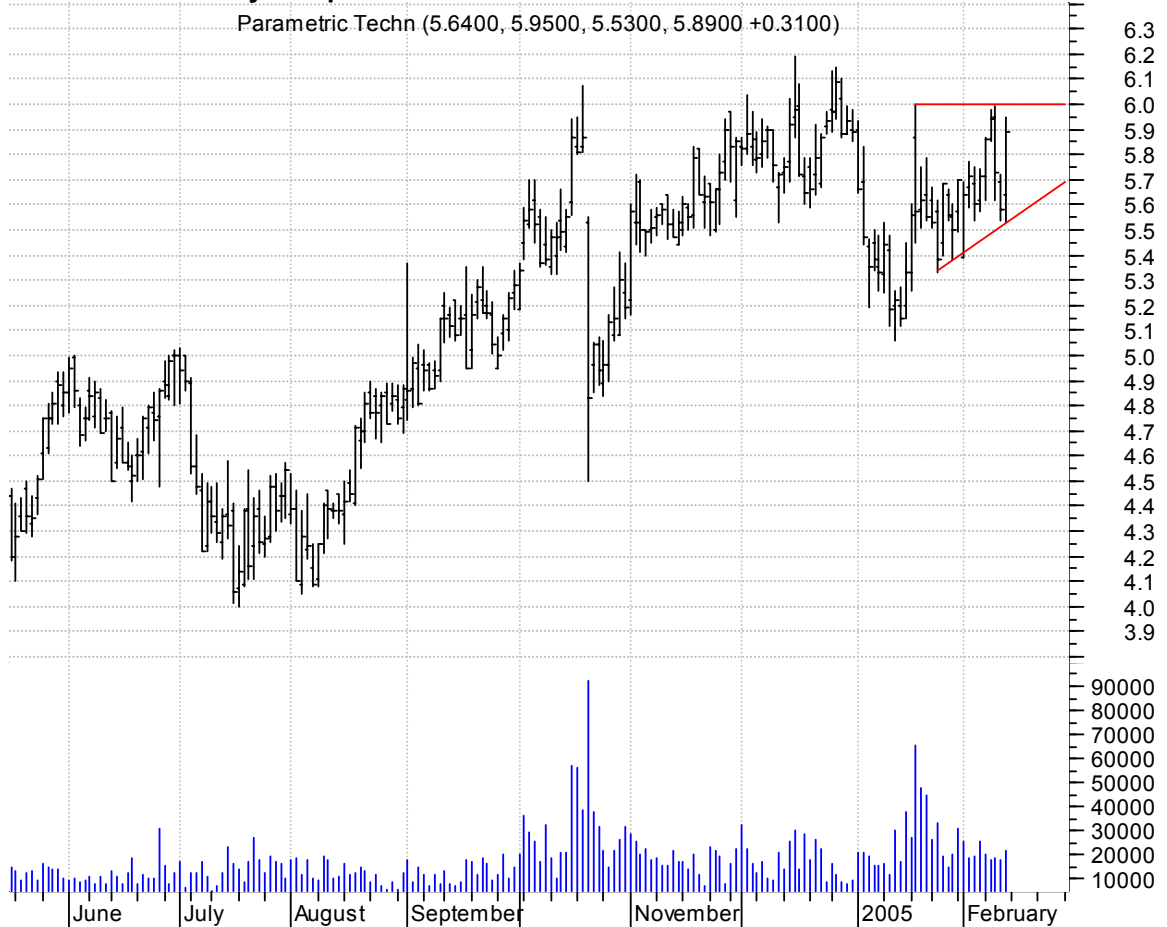
# **NUE symm. tri. / buy on upside brkout on increased volume**



# **OPTN symm. tri. / buy on upside brkout on larger than normal volume**



# **PMTC asc. tri. / buy on upside brkout on increased volume**



**PRFT symm. tri. / buy on upside brkout on increased volume**

Perficient Inc:O (7.9900, 7.9900, 7.8100, 7.9300 +0.1200)



**RETK rectangle / buy on upside brkout on increased volume**

Retek Inc:OTC (6.1200, 6.2200, 6.0100, 6.0900 -0.0300)



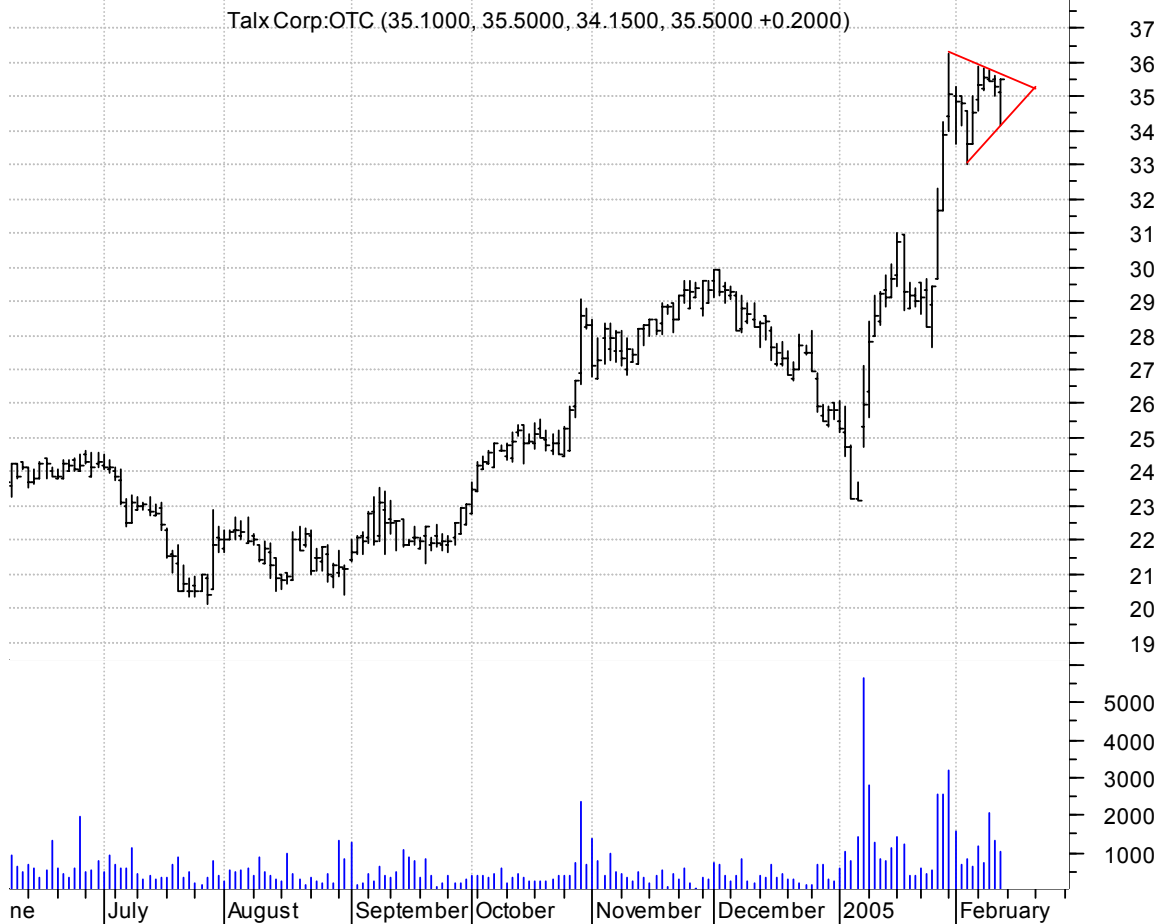
# **ROV asc. tri. / buy on upside brkout on increased volume**



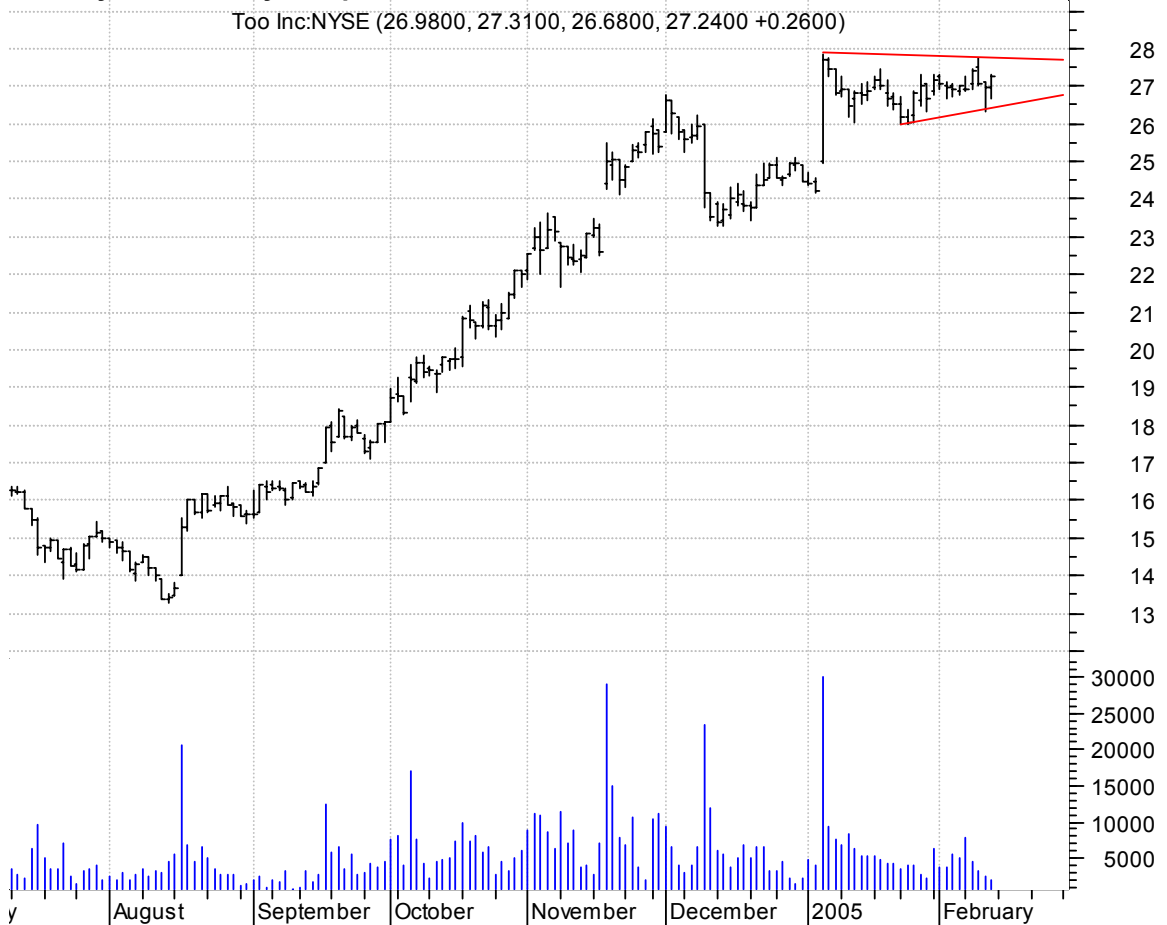
# **SYXI sloppy symm. tri. (discounting spike day) / buy on upside brkout on larger than normal volume**



# **TALX bull pennant / buy on upside brkout on increased volume**

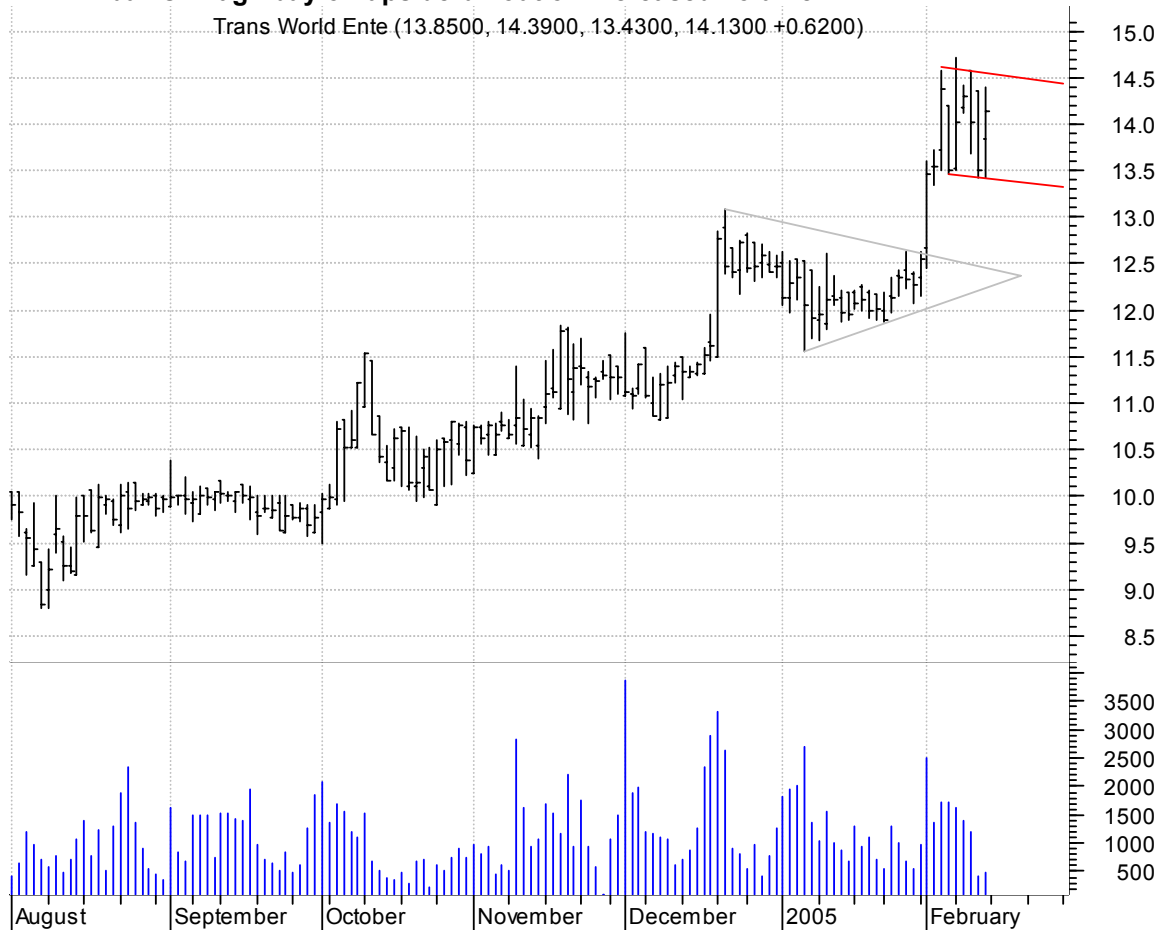


# **TOO symm. tri. / buy on upside brkout on increased volume**



# **TWMC bullish flag / buy on upside brkout on increased volume**

Trans World Ente (13.8500, 14.3900, 13.4300, 14.1300 +0.6200)



# **TXI asc. tri. / buy on upside brkout on increased volume**

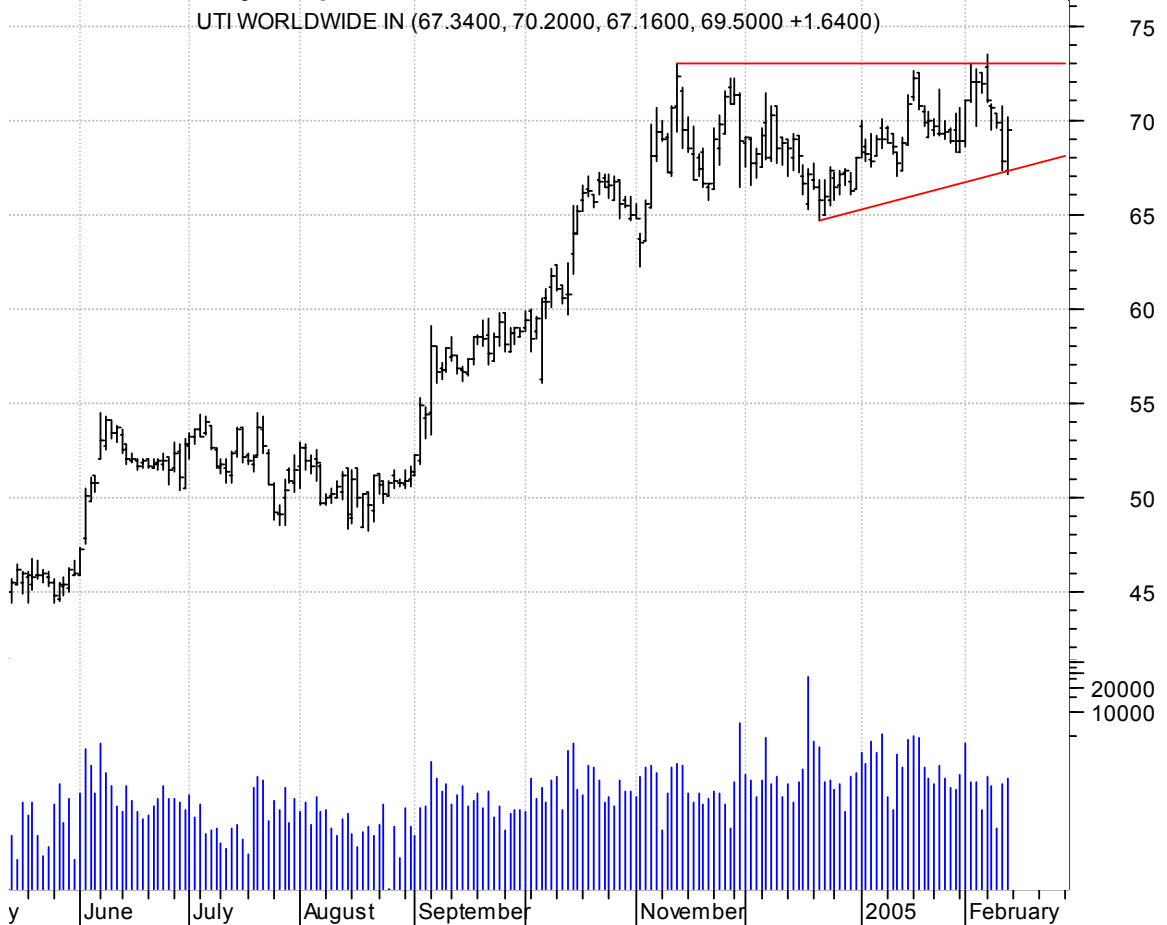
Texas Industries (63.4500, 64.0700, 62.3500, 63.8500 +0.3500)



# **UTHR symm. tri. preceded by 'pole-like' move / buy on upside brkout on increased volume**



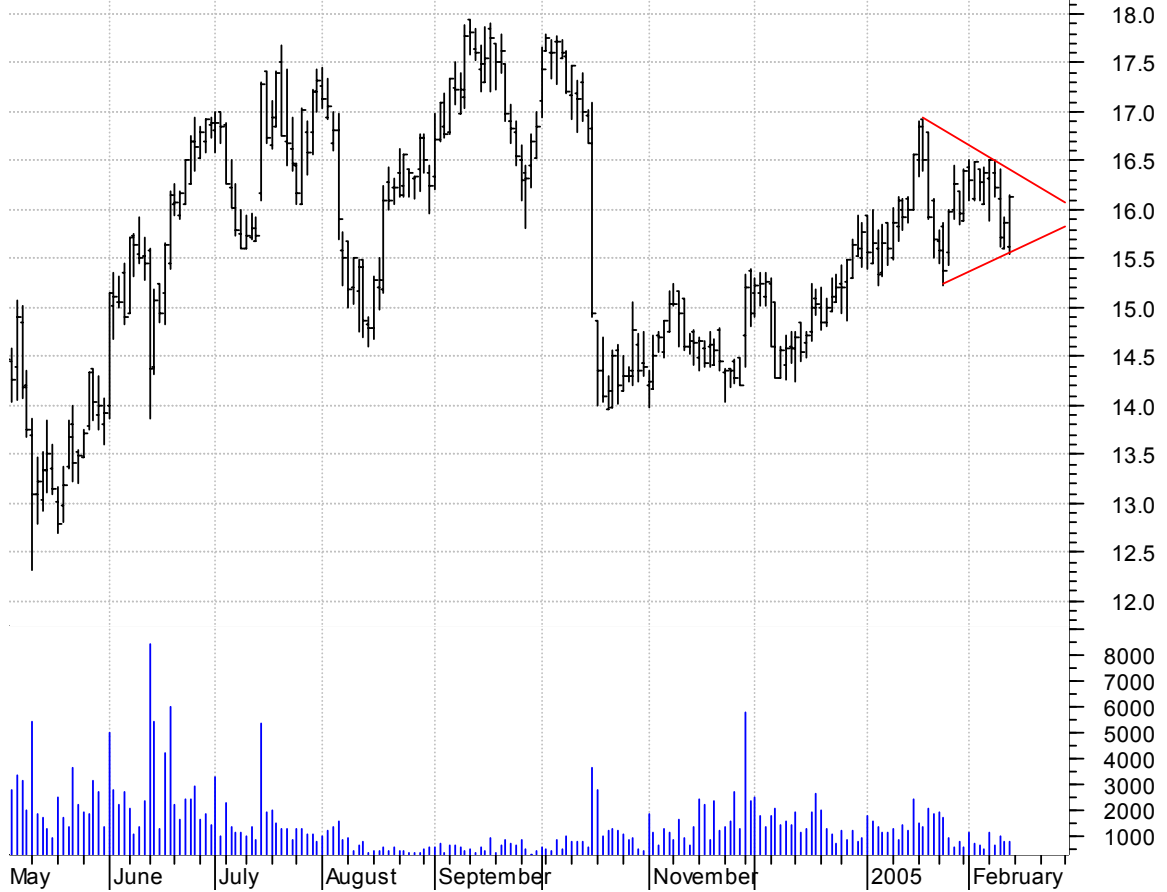
## **UTIW asc. tri. / buy on upside brkout on increased volume**





# VOXX symm. tri. / buy on upside brkout on increased volume

Audiovox Corp CI (15.6200, 16.1500, 15.5500, 16.1300 +0.2600)



# X sloppy asc. tri. (discounting spike day) / buy on upside brkout on increased volume

US Steel Corp:NY (52.9300, 53.2400, 51.9000, 52.8100 +0.5300)



**YELL sloppy asc. tri. (discounting spike days) preceded by 'pole-like' move / buy on upside brkout on increased volume**



**chartpatterns.com**

Chart Pattern Analysis for Timing the Markets

[KMatras@aol.com](mailto:KMatras@aol.com)