

**ARD falling wedge preceded by 'pole-like' move / buy on upside brkout on increased volume**



**BEV falling wedge / buy on upside brkout on increased volume**



**BN bull flag / buy on upside brkout on increased volume**

Banta Cp:NYSE (48.5000, 48.5000, 47.4000, 48.0000 -0.5000)



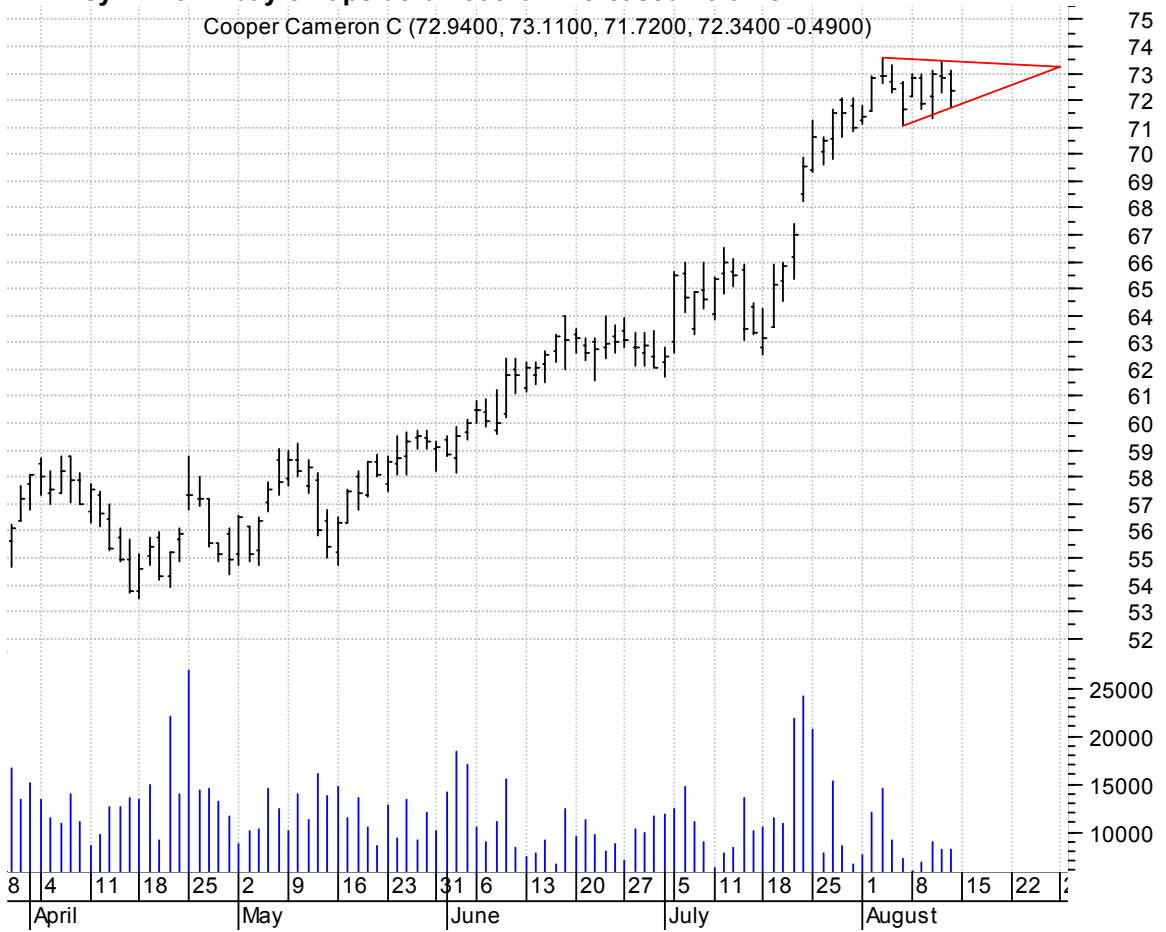
**BNI symm. tri. preceded by 'pole-like' move / buy on upside brkout on increased volume**

Burlington North (55.0800, 55.5000, 54.6700, 55.2000 -0.0200)



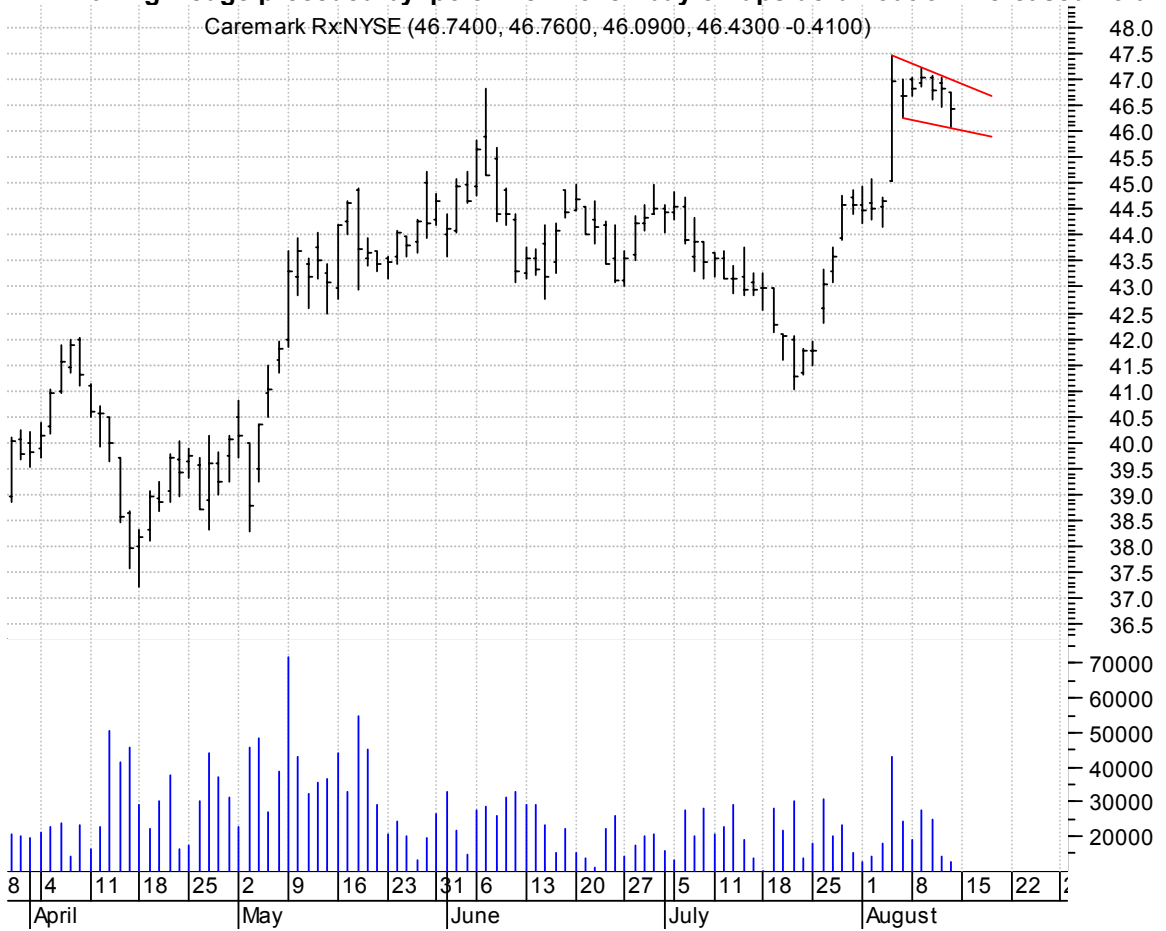
**CAM symm. tri. / buy on upside breakout on increased volume**

Cooper Cameron C (72.9400, 73.1100, 71.7200, 72.3400 -0.4900)



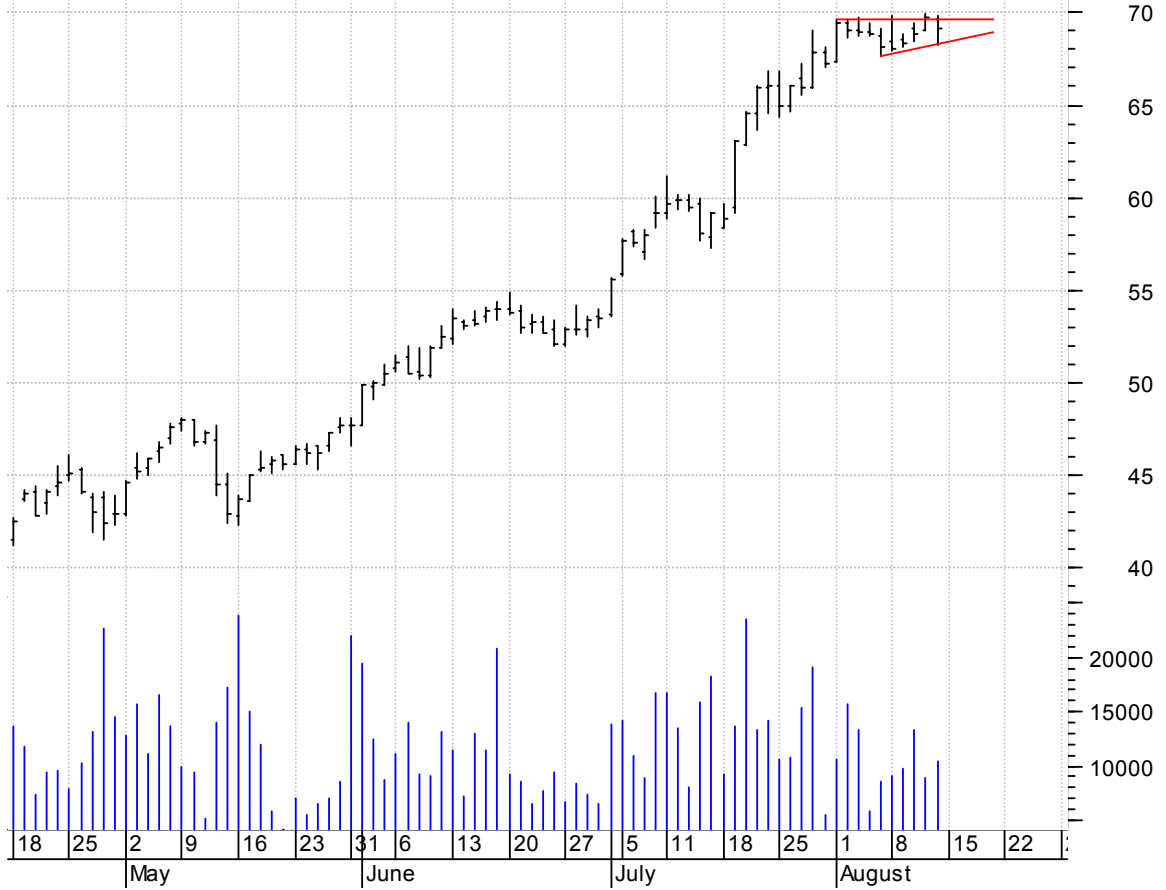
**CMX falling wedge preceded by 'pole-like' move / buy on upside breakout on increased volume**

Caremark RxNYSE (46.7400, 46.7600, 46.0900, 46.4300 -0.4100)



**CNX sloppy asc. tri. / buy on upside breakout on increased volume**

CONSOL Energy In (69.6000, 69.8200, 68.2000, 69.1300 -0.5700)



**GLW falling wedge / buy on upside breakout on increased volume**

Corning Inc.NYSE (19.3000, 19.4400, 19.1400, 19.3400 -0.1900)



**GNSS symm. tri. preceded by 'pole-like' move / buy on upside brkout on increased volume**

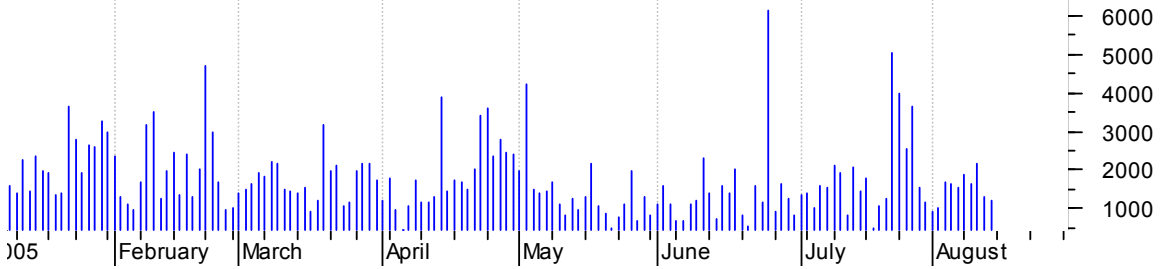
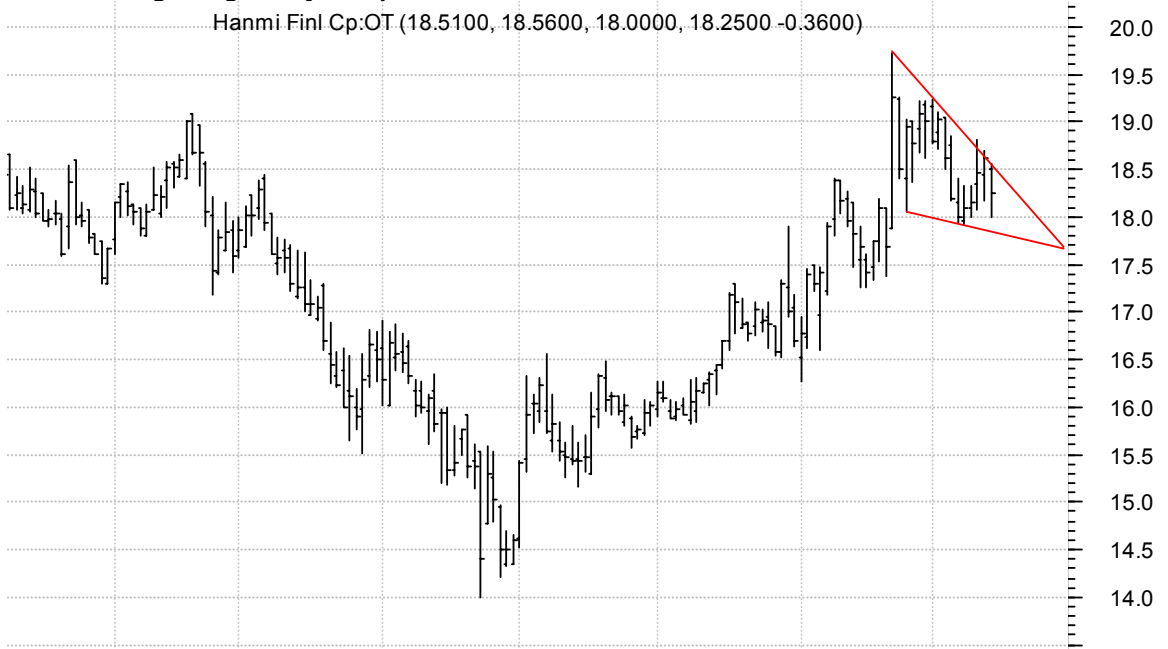


**GYI falling wedge preceded by 'pole-like' move / buy on upside brkout on increased volume**



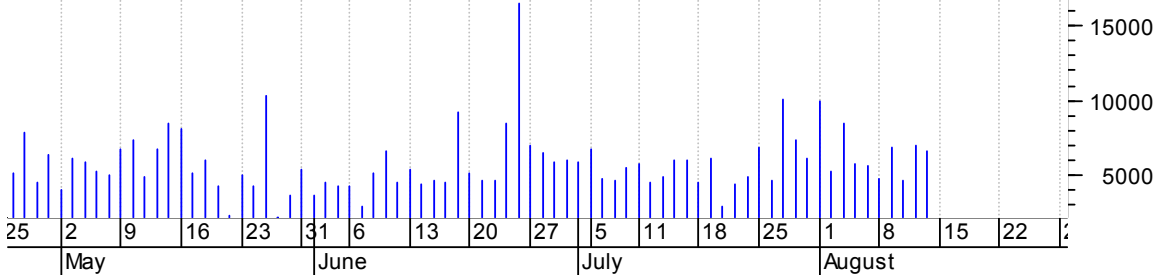
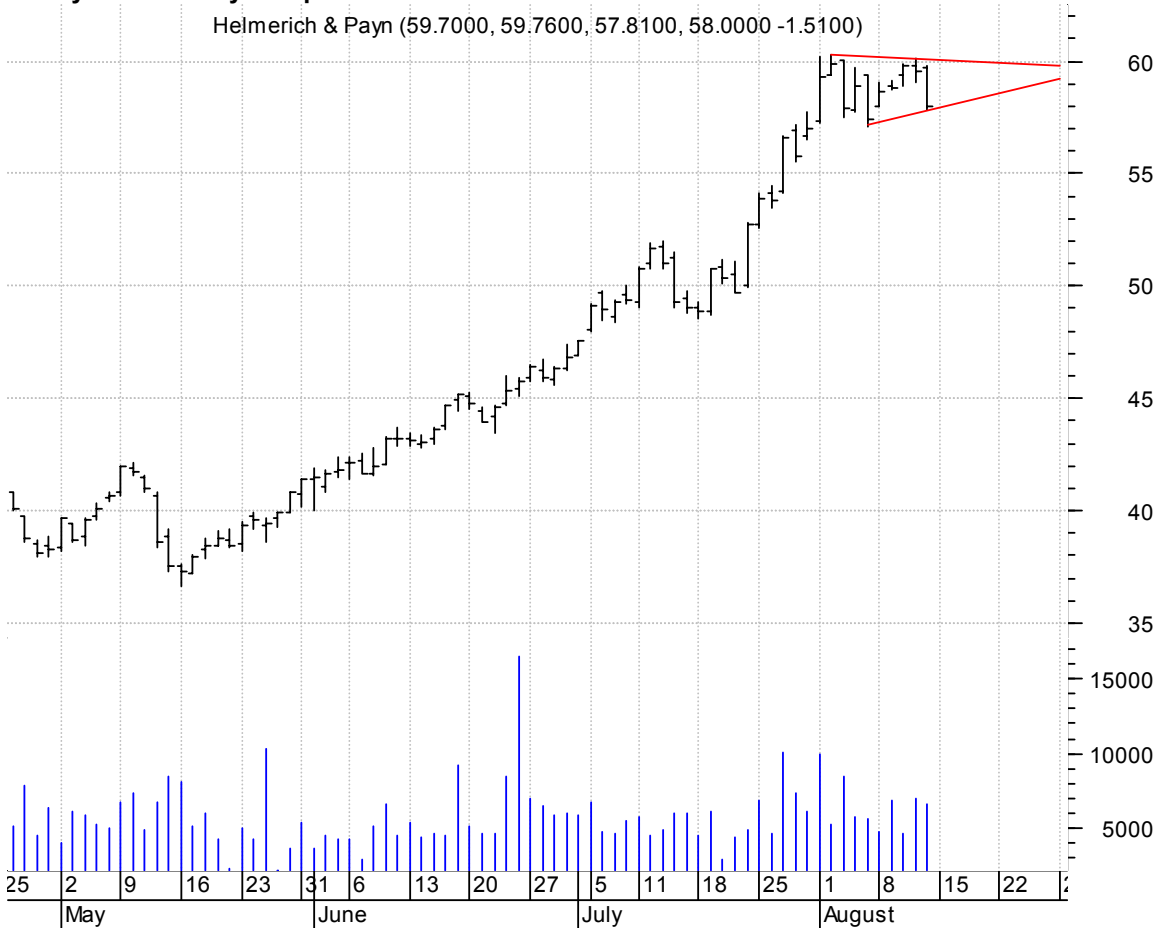
**HAFC falling wedge / buy on upside breakout on increased volume**

Hanmi Finl Cp:OT (18.5100, 18.5600, 18.0000, 18.2500 -0.3600)



**HP symm. tri. / buy on upside breakout on increased volume**

Helmerich & Payn (59.7000, 59.7600, 57.8100, 58.0000 -1.5100)



**HUBG symm. tri. preceded by 'pole-like' move / buy on upside brkout on increased volume**

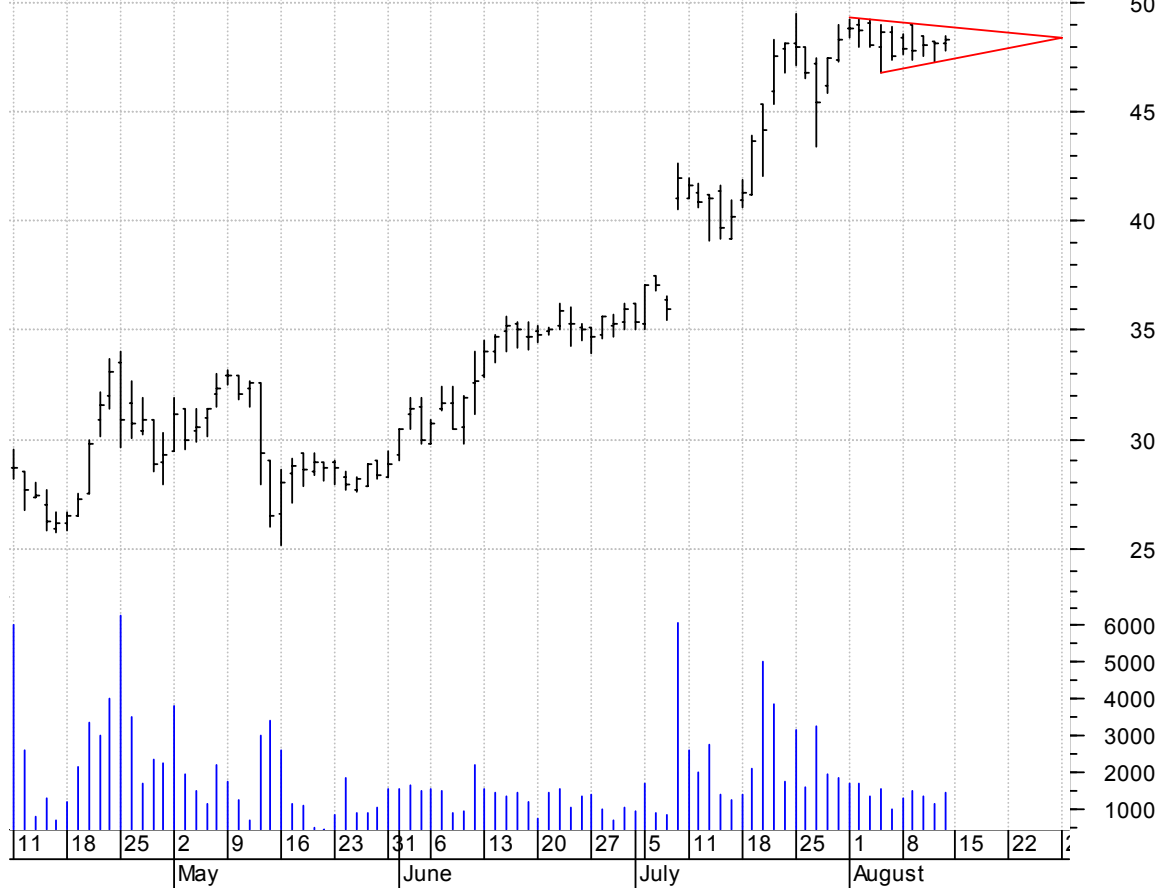


**IFSIA falling wedge preceded by 'pole-like' move / buy on upside brkout on increased volume**



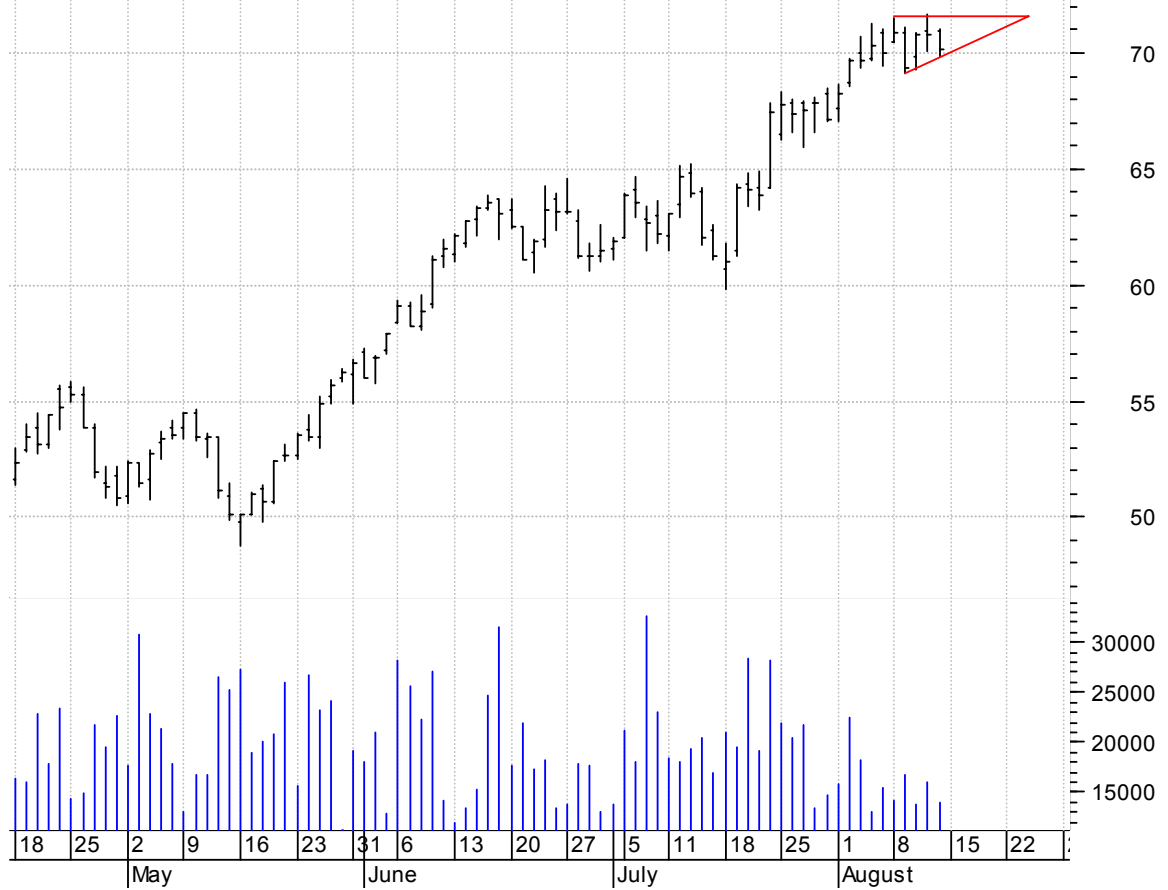
**LUFK symm. tri. / buy on upside brkout on increased volume**

Lufkin Industrie (48.1000, 48.5000, 47.8400, 48.3100 +0.2100)



**NE asc. tri. / buy on upside brkout on increased volume**

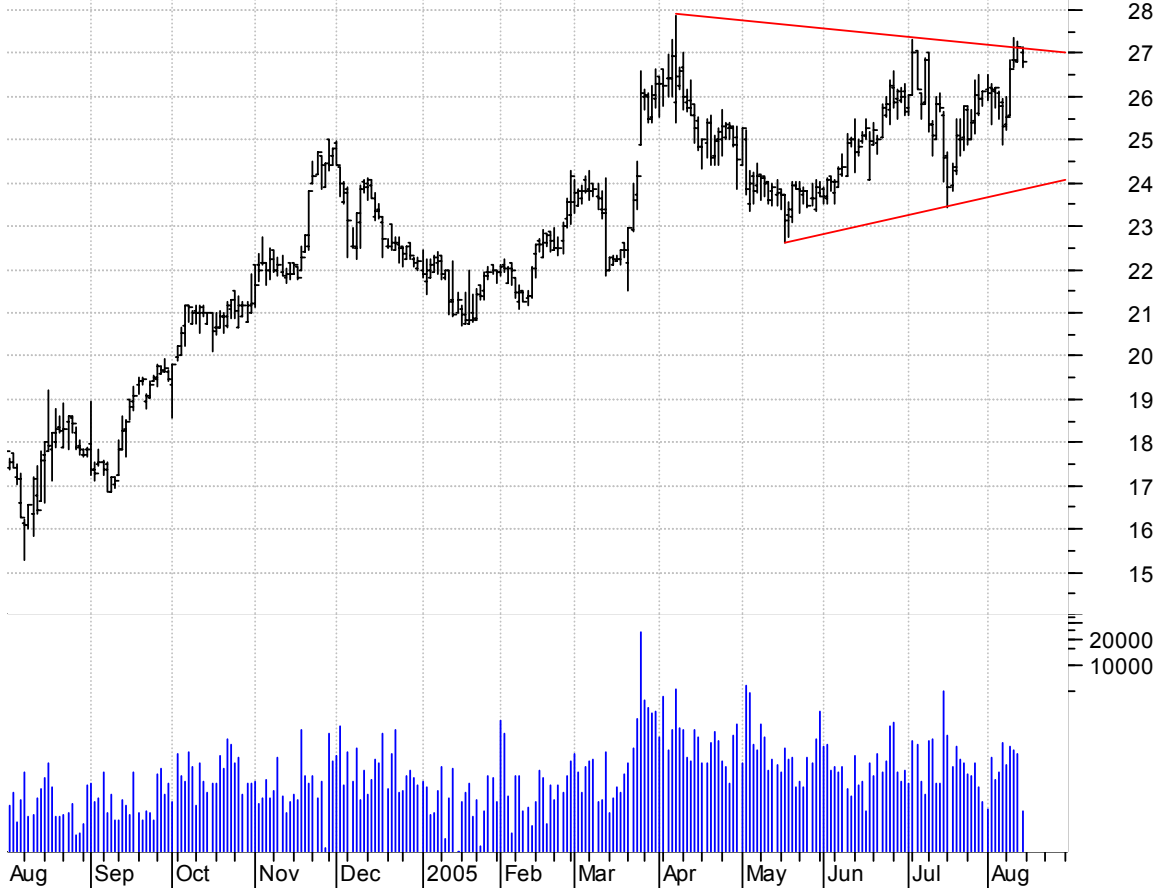
Noble Drilling C (70.9500, 71.0500, 69.8300, 70.2000 -0.5800)





**NUCO symm. tri. / buy on upside brkout on increased volume**

Nuco2 Inc:OTC (27.0300, 27.1500, 26.6800, 26.8200 -0.3300)



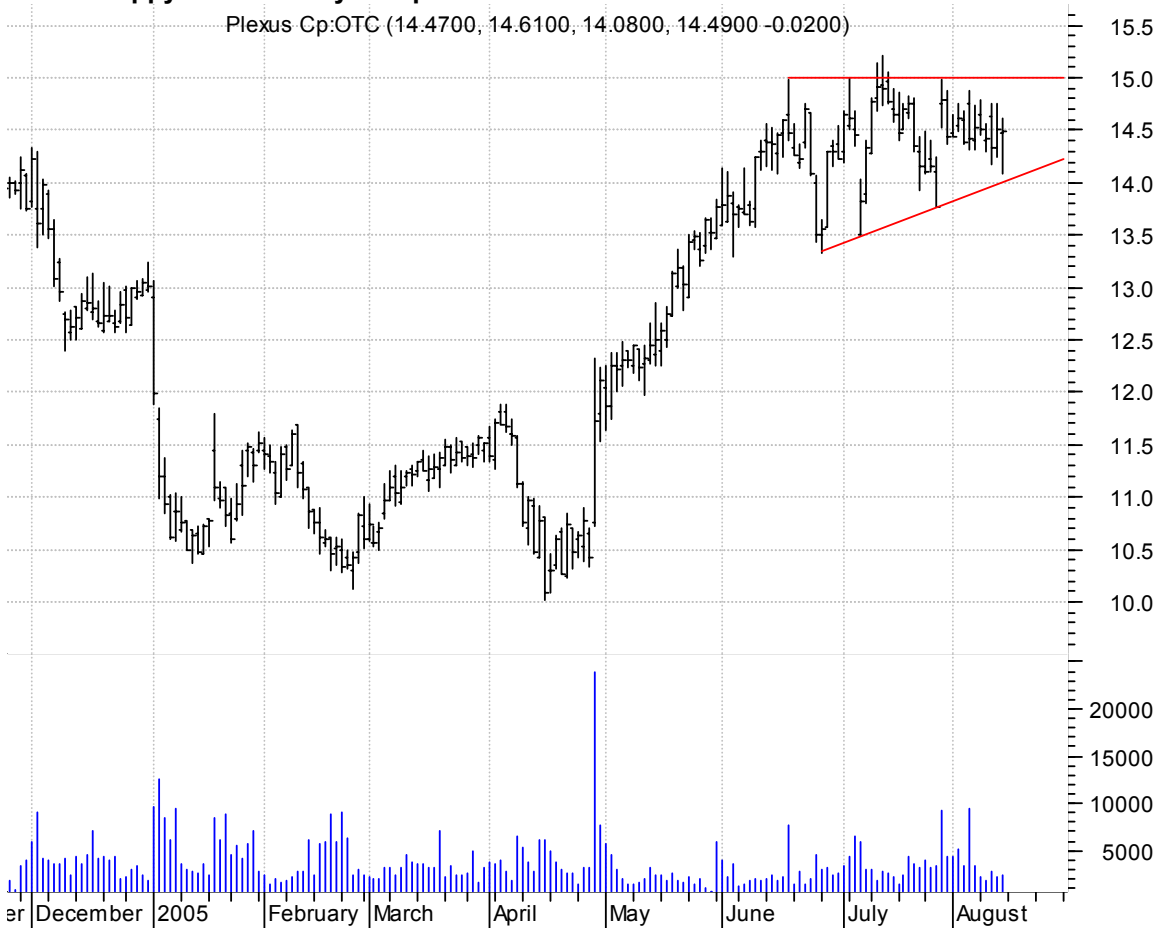
**PDC symm. tri. / buy on upside brkout on increased volume**

Pioneer Drilling (16.2000, 16.3500, 15.4500, 16.1300 +0.0300)



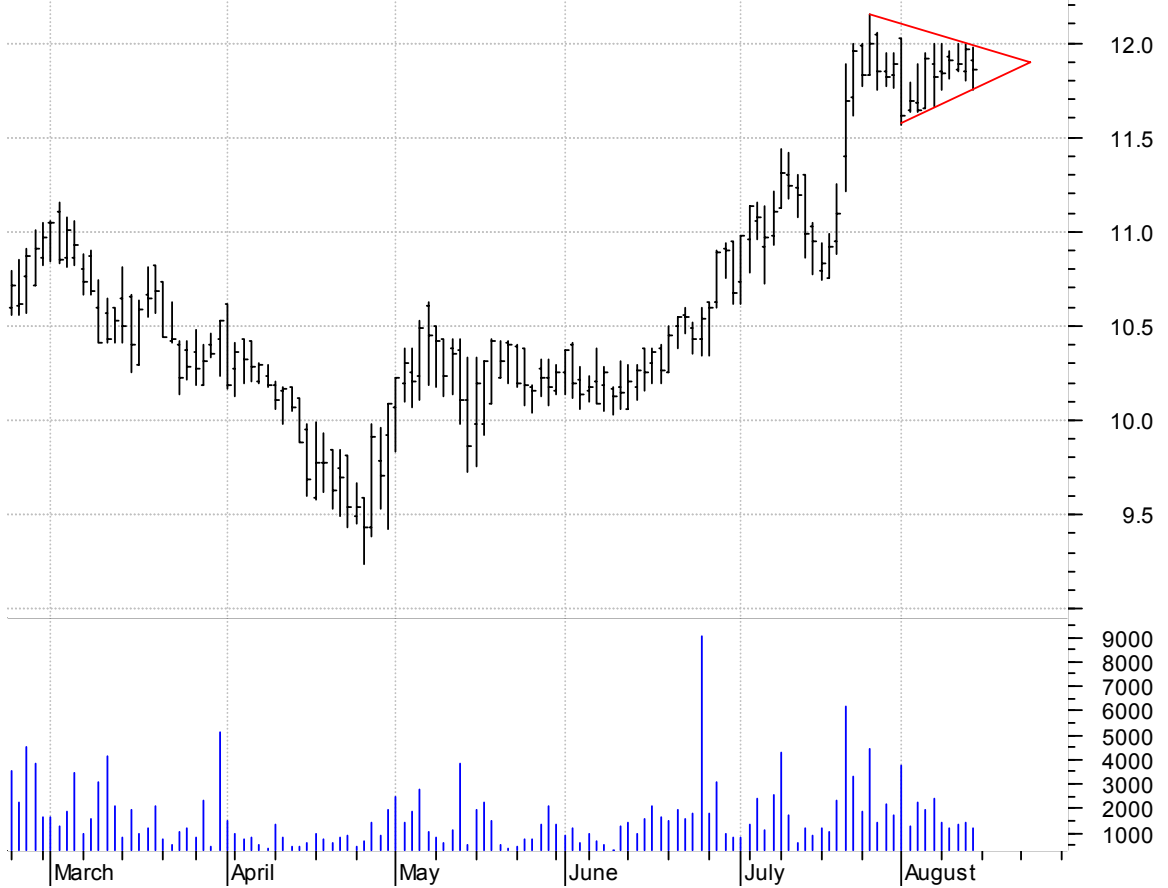
**PLXS sloppy asc. tri. / buy on upside breakout on increased volume**

Plexus Cp:OTC (14.4700, 14.6100, 14.0800, 14.4900 -0.0200)

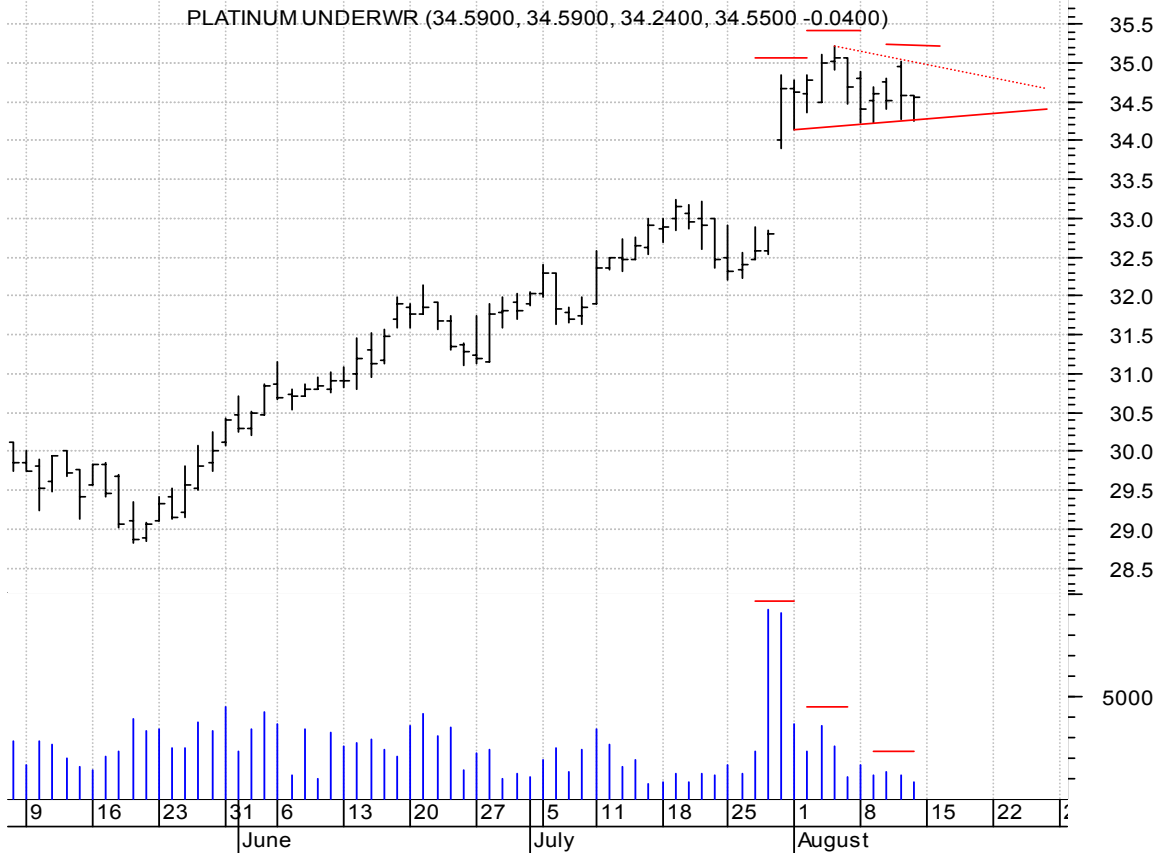


**PRTR symm. tri. preceded by 'pole-like' move / buy on upside breakout on increased volume**

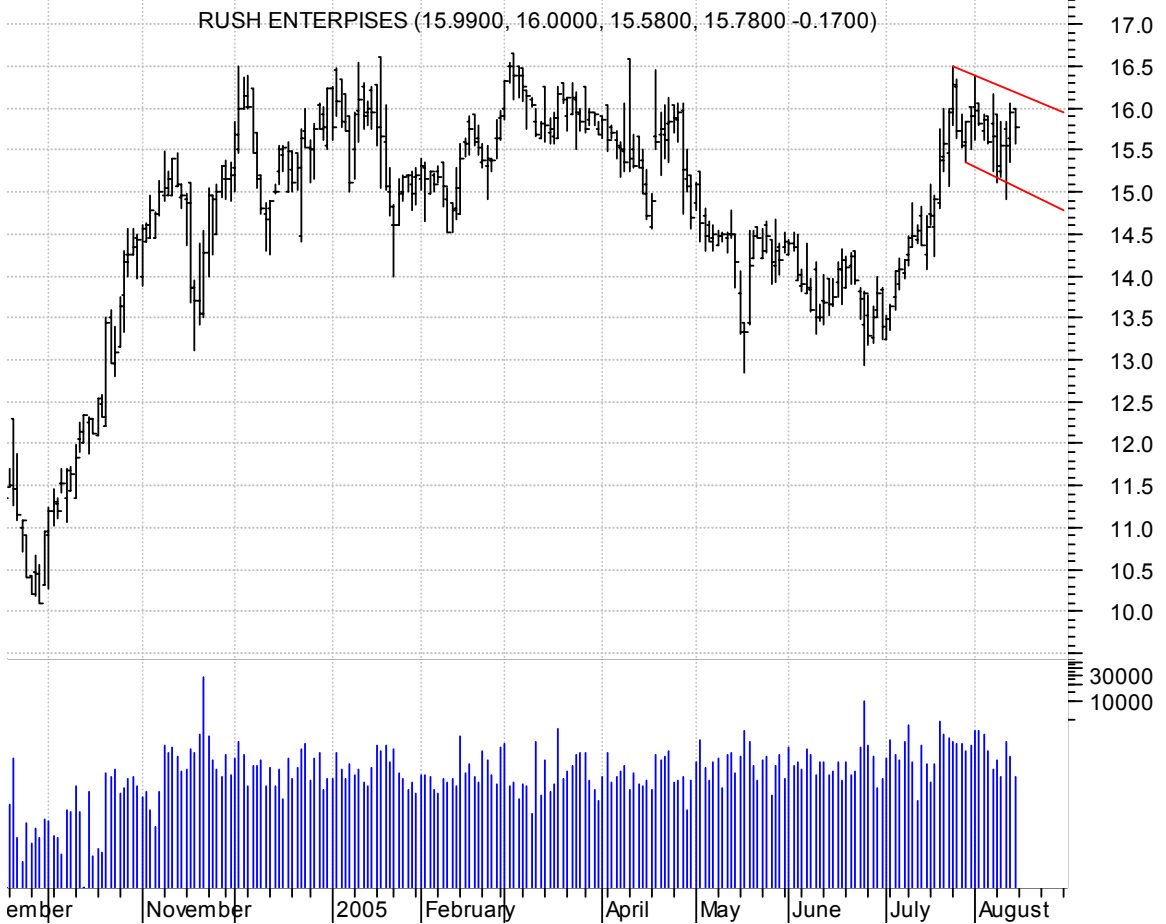
PARTNERS TRUST F (11.9100, 11.9800, 11.7500, 11.8600 -0.1100)



**PTP h. & sh. / 1) sell on downside brkout (solid red line -- neckline) on increased volume or  
 2) buy on upside brkout (pattern failure) on increased volume [h. & sh. pattern failures will often times make sharp upside breakouts]**



**RUSHA sloppy bullish flagging / buy on upside brkout on increased volume**



**USAP symm. tri. preceded by 'pole-like' move / buy on upside brkout on increased volume**

Univ Stainless & (16.5500, 16.7600, 16.0100, 16.2100 -0.1800)

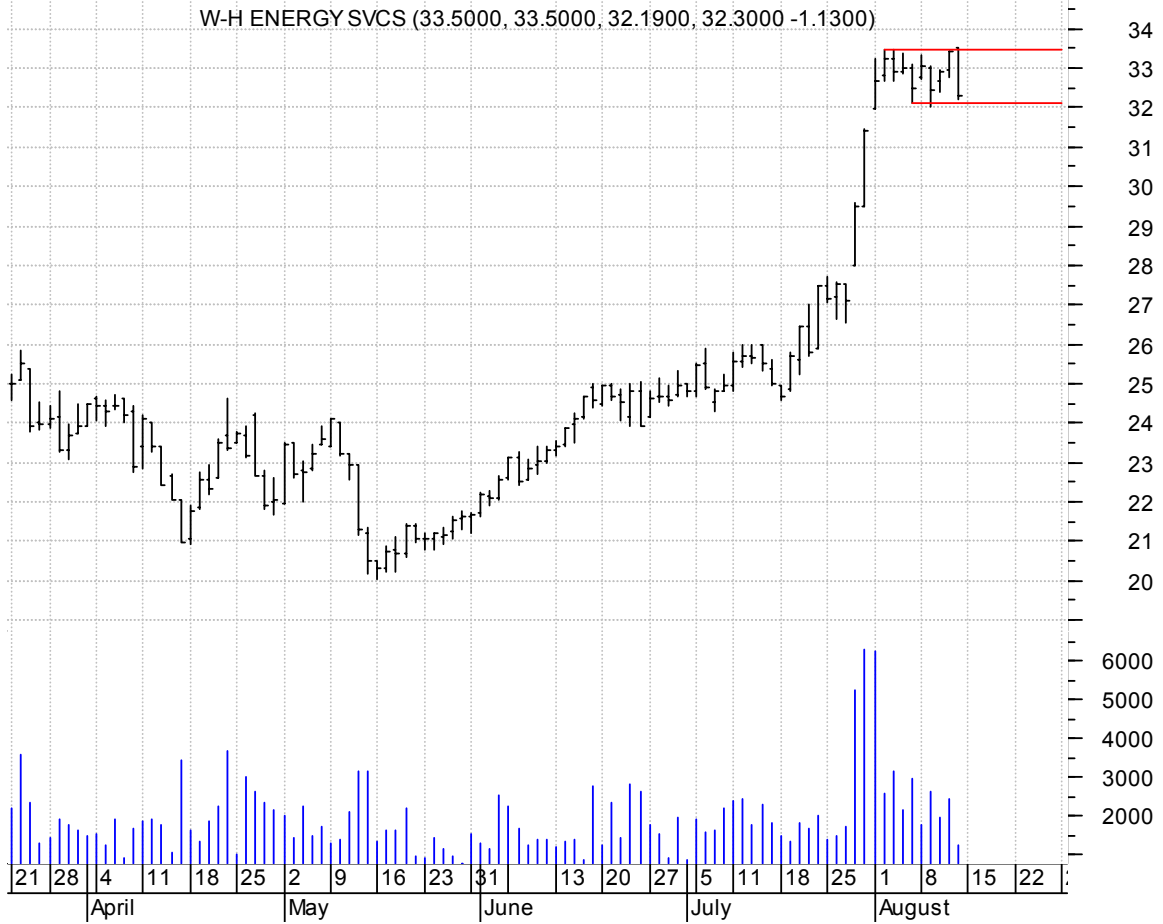


**VSAT symm. tri. / buy on upside brkout on increased volume**

Viasat Inc:OTC (23.1100, 23.2000, 22.6800, 23.0000 -0.1800)



**WHQ sloppy rectangle preceded by 'pole-like' move / buy on upside brkout on increased volume**



**WLSN sloppy asc. tri. / buy on upside brkout on increased volume**



**chartpatterns.com**  
Chart Pattern Analysis for Timing the Markets

[KMatras@aol.com](mailto:KMatras@aol.com)