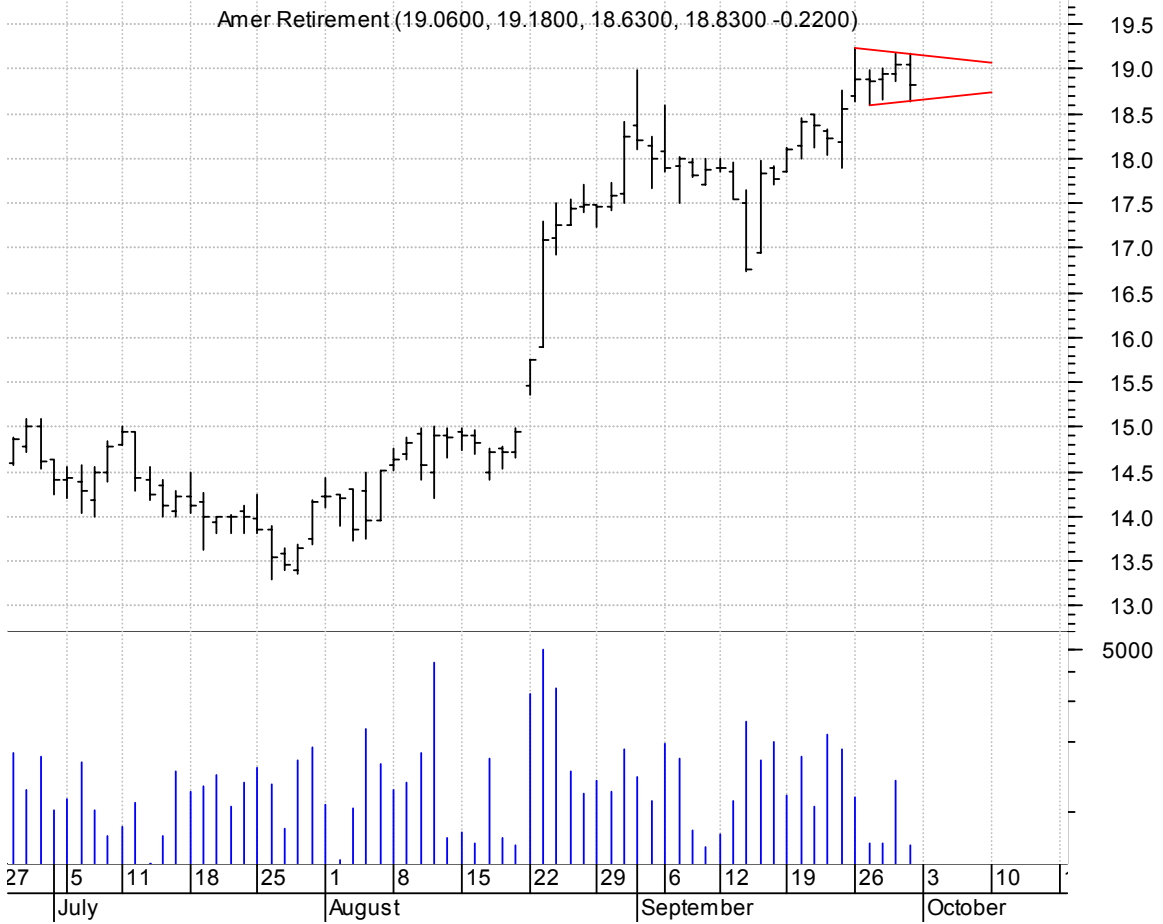


**ACR symm. tri. / buy on upside brkout on increased volume**



**ANEN sloppy symm. tri. (discounting spike day) / buy on upside brkout on increased volume**



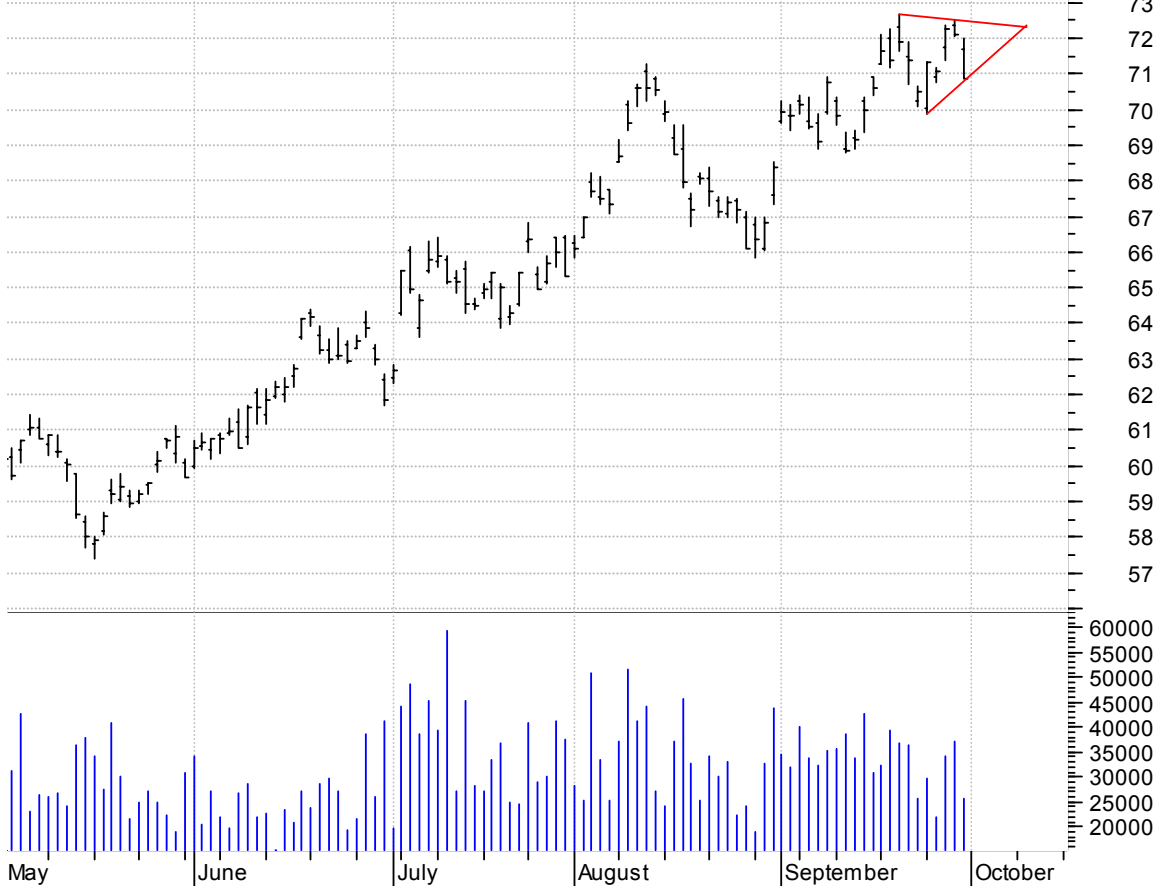
**BGC symm. tri. / buy on upside brkout on increased volume**

General Cable Co (16.7200, 16.8500, 16.6600, 16.8000 +0.1500)



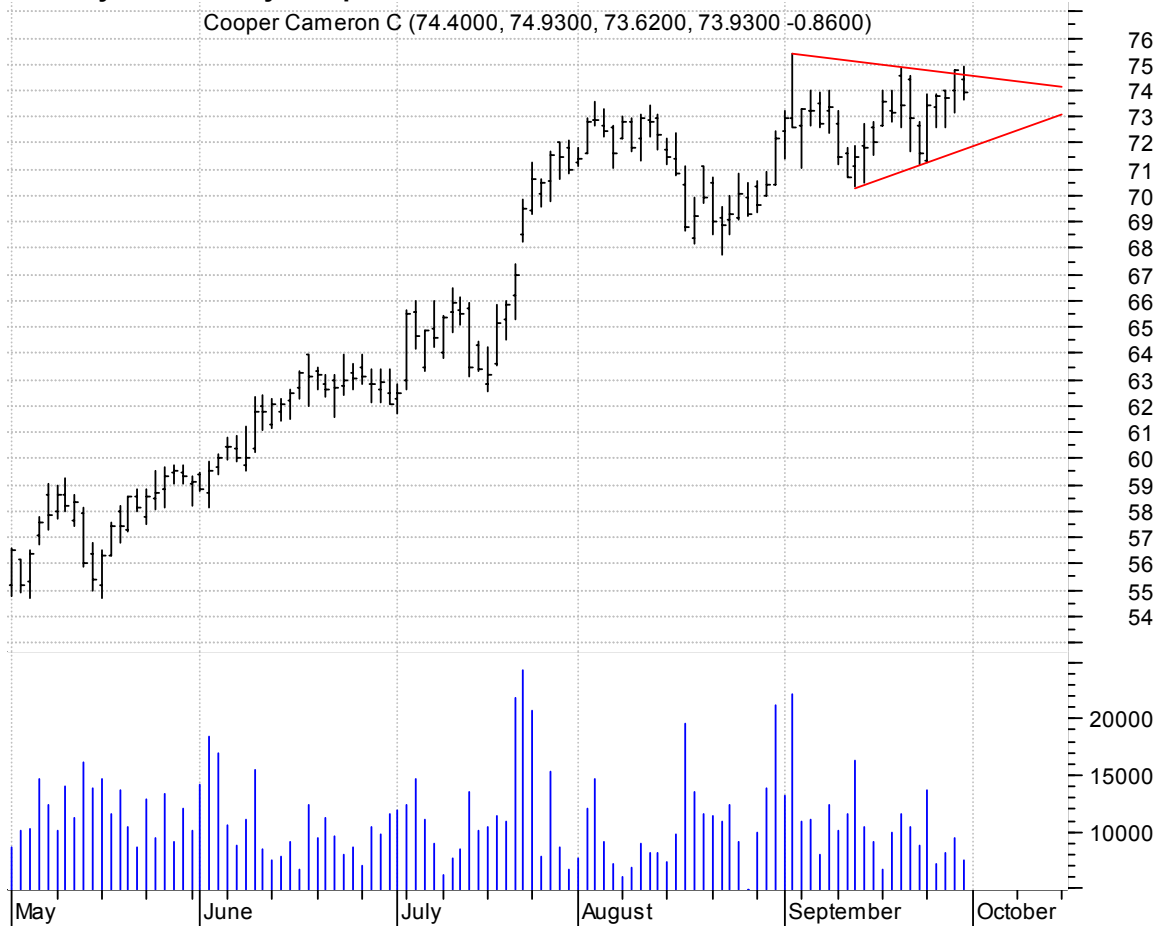
**BP symm. tri. / buy on upside brkout on increased volume**

BP Plc:NYSE (71.7000, 72.0000, 70.8500, 70.8500 -1.2600)



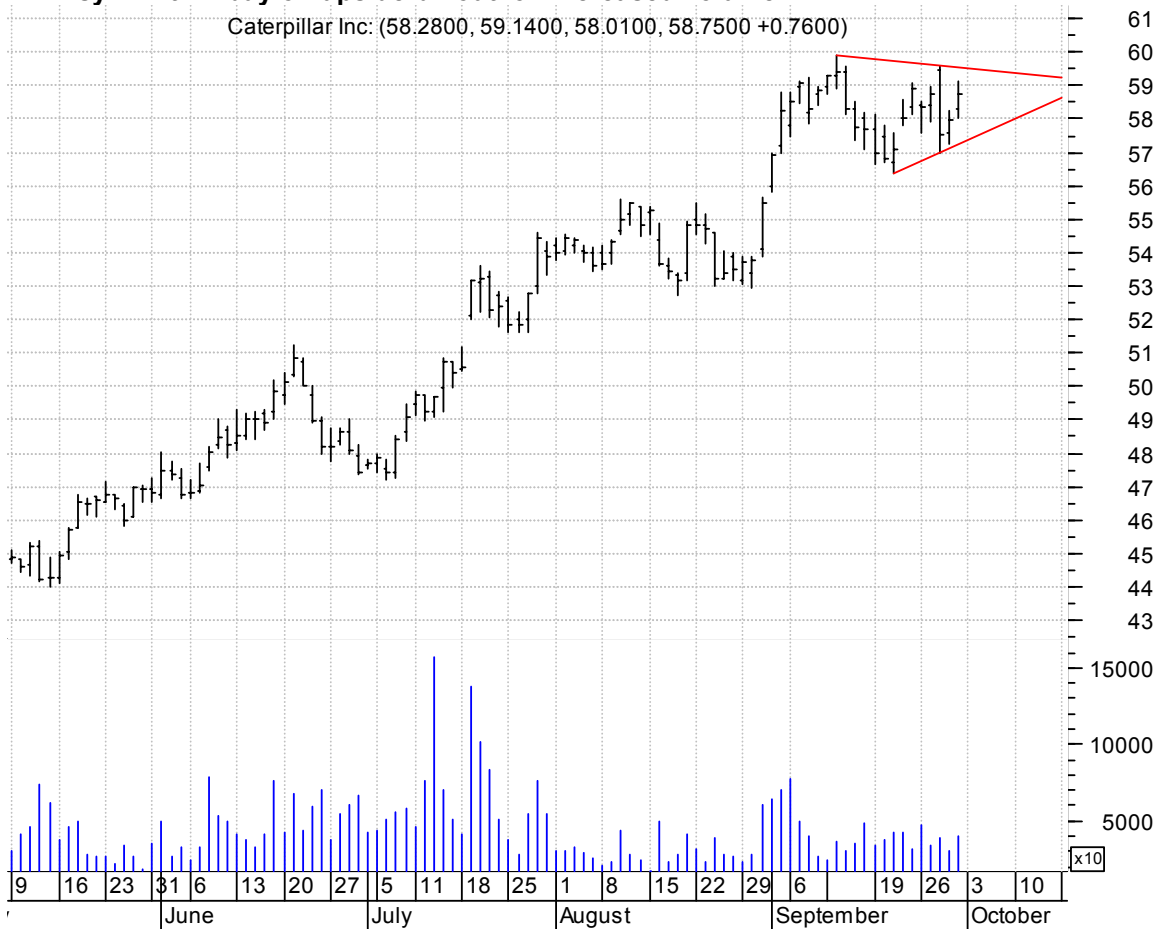
**CAM symm. tri. / buy on upside brkout on increased volume**

Cooper Cameron C (74.4000, 74.9300, 73.6200, 73.9300 -0.8600)



**CAT symm. tri. / buy on upside brkout on increased volume**

Caterpillar Inc: (58.2800, 59.1400, 58.0100, 58.7500 +0.7600)



**CBI symm. tri. / buy on upside breakout on increased volume**

Chicago Bridge & (30.7500, 31.5600, 30.5300, 31.0900 +0.2800)

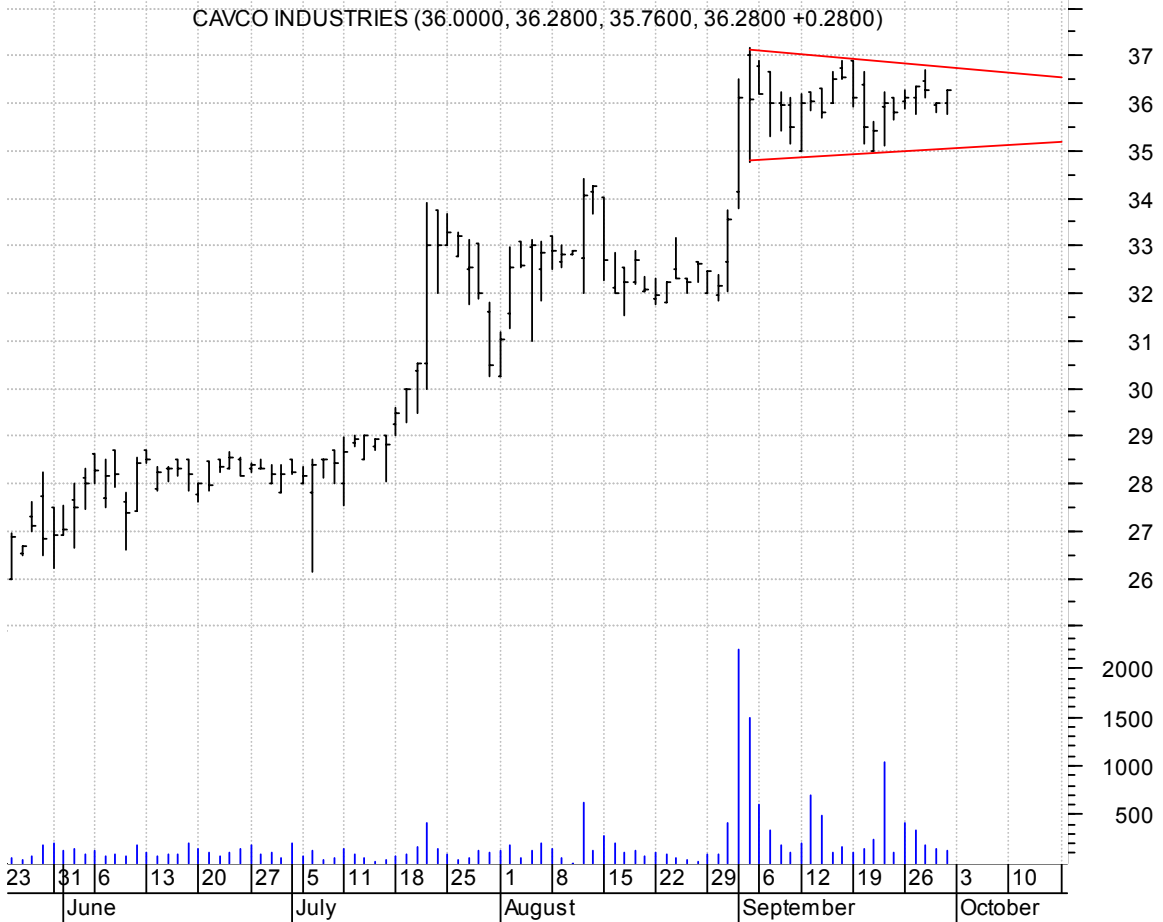


**COL asc. tri. / buy on upside breakout on increased volume**

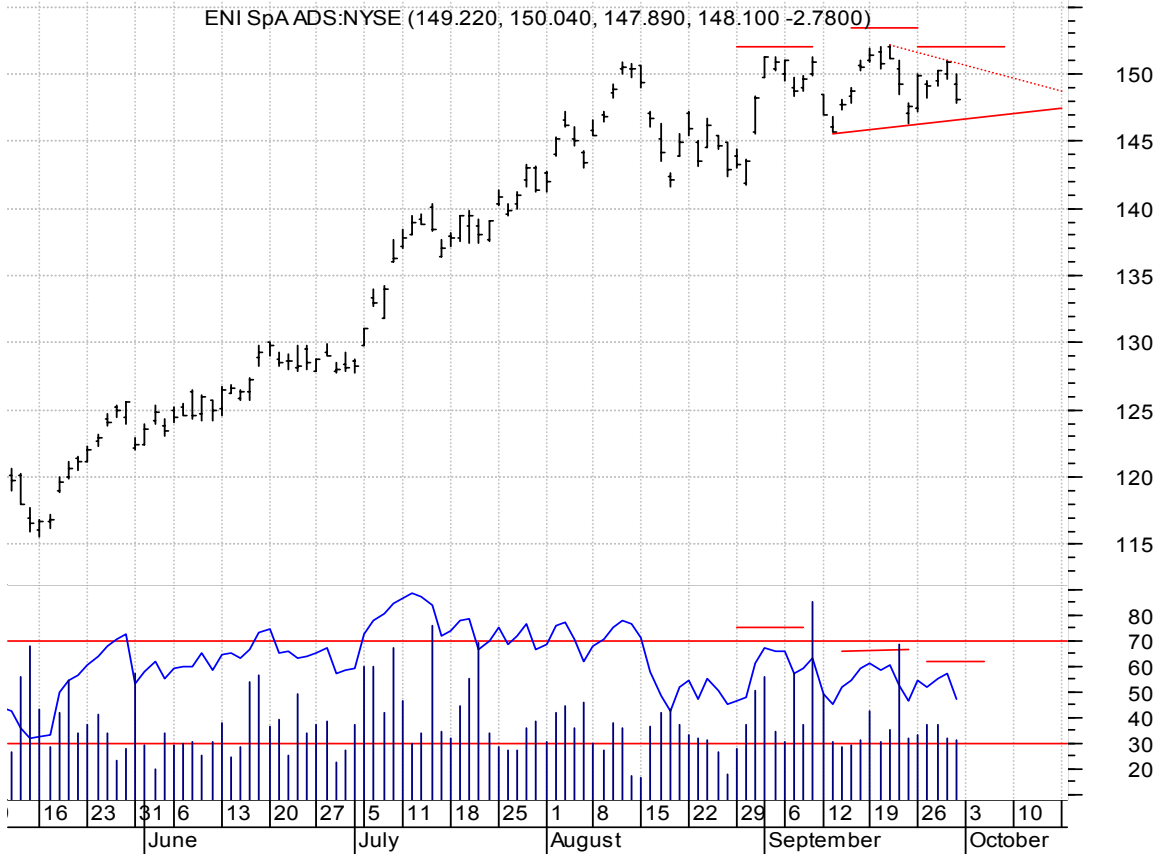
ROCKWELL COLLINS (47.8200, 48.4700, 47.6300, 48.3200 +0.4400)



**CVCO symm. tri. / buy on upside brkout on increased volume**



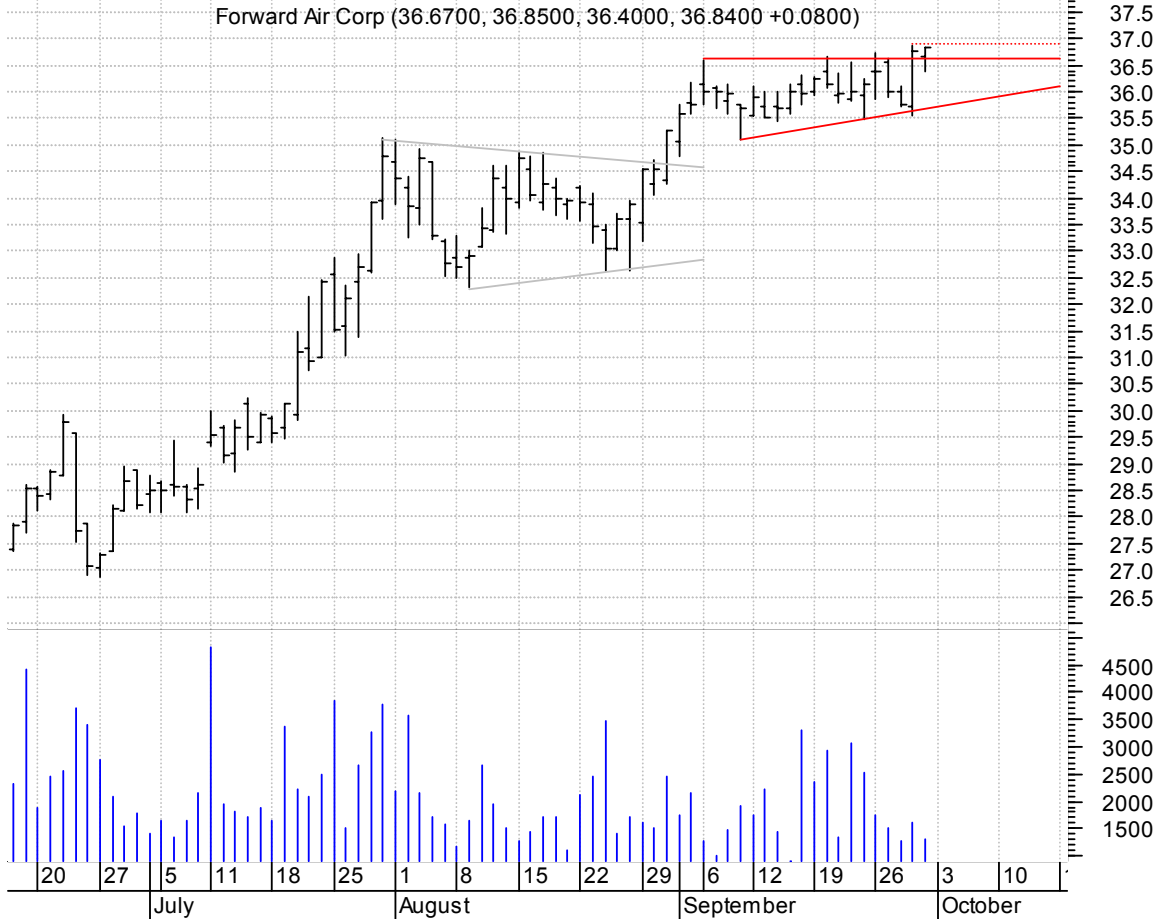
**E h. & sh. / 1) sell on downside brkout (solid red line -- neckline) on increased volume or  
2) buy on upside brkout (dotted red line -- pattern failure) on increased volume  
[h. & sh. pattern failures will often times make sharp upside breakouts]**



**ELK symm. tri. preceded by 'pole-like' move / buy on upside brkout on increased volume**

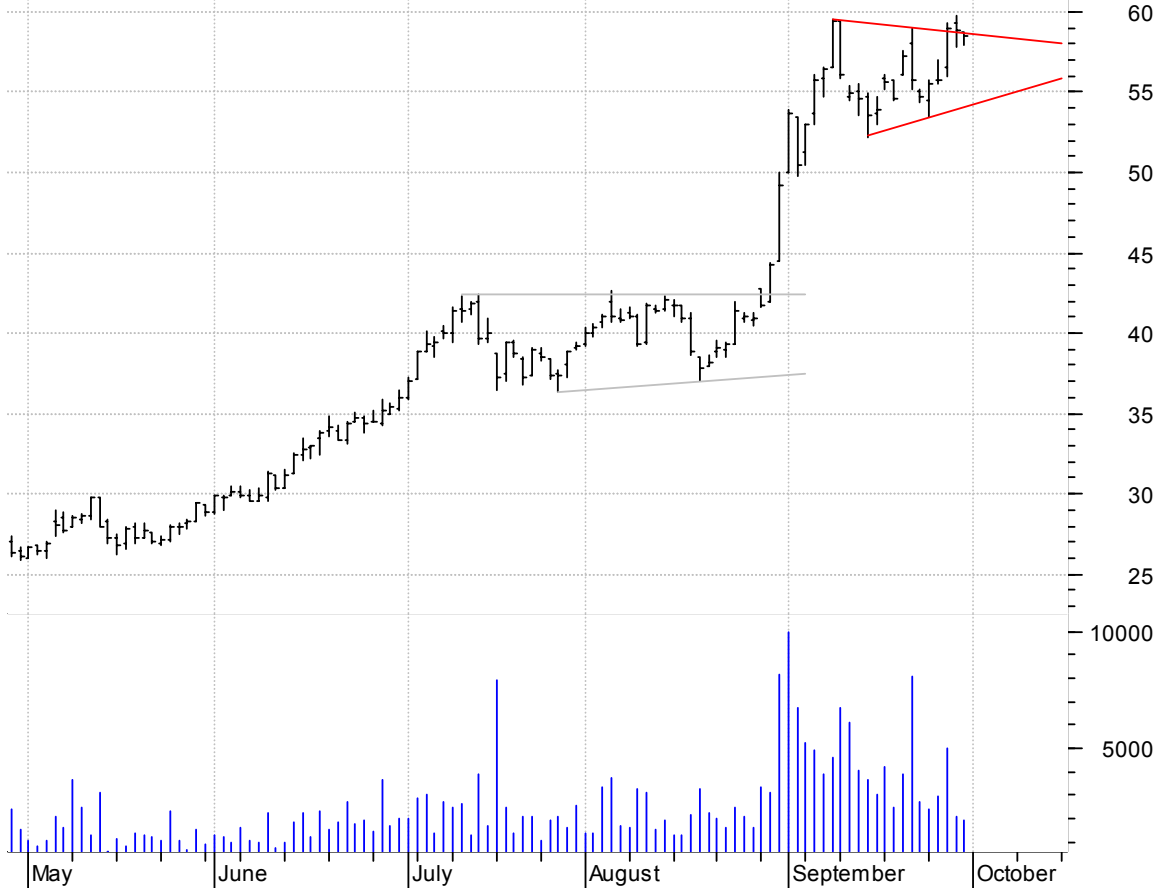


**FWRD asc. tri. brkout / buy on upside follow-thru (dotted red line on) increased volume**



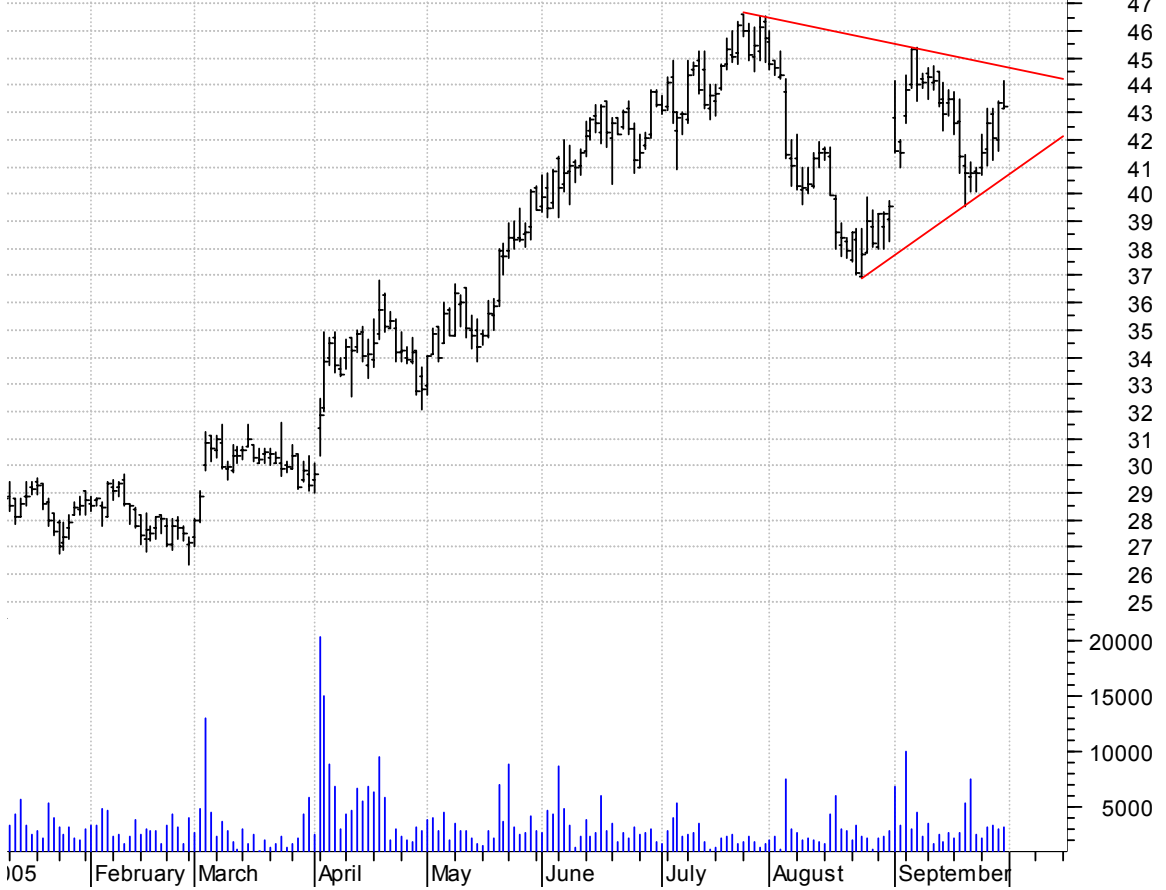
**GI symm. tri. preceded by 'pole-like' move / buy on upside brkout on increased volume**

Giant Industries (58.7500, 58.7800, 57.9800, 58.5400 -0.3300)

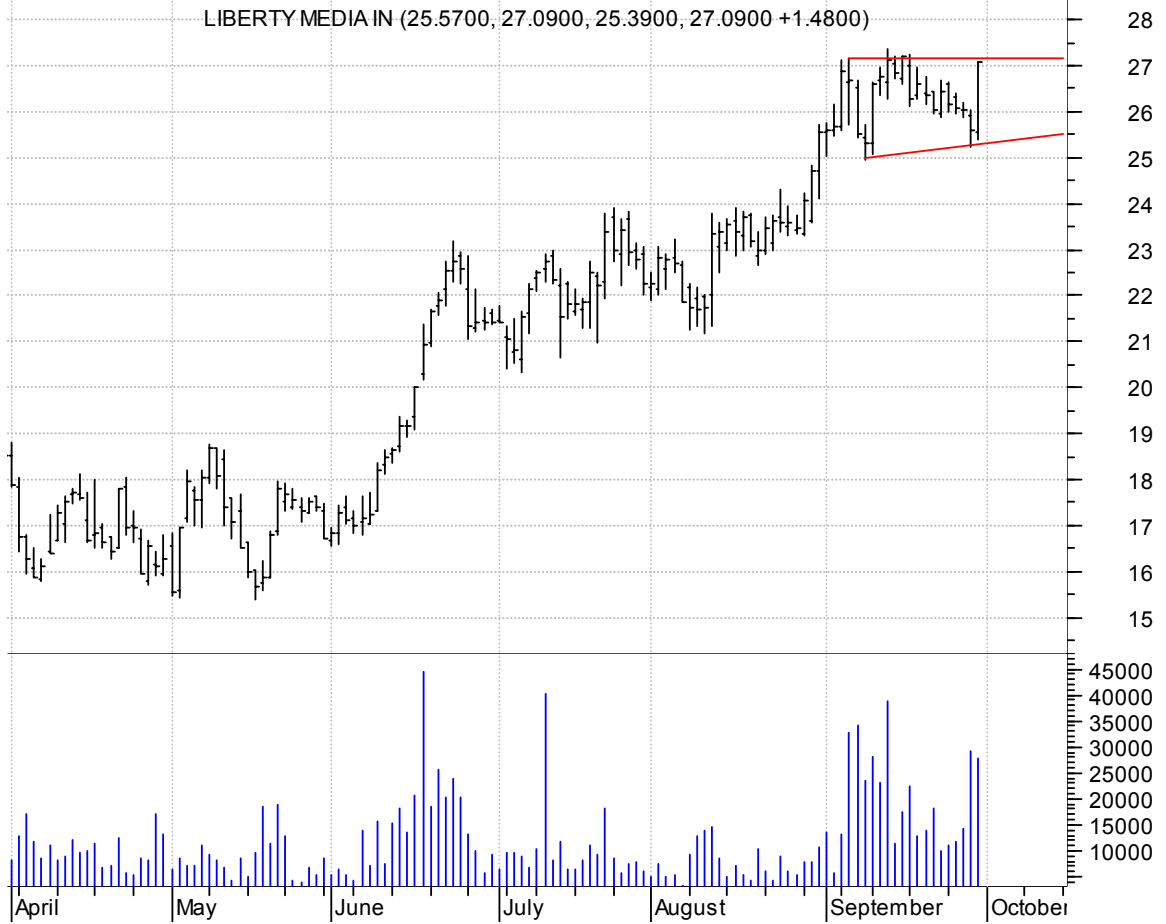


**JOSB symm. tri. / buy on upside brkout on increased volume**

J A Bank Clothie (43.1600, 44.1500, 43.1200, 43.2200 -0.1200)



**LBTYA asc. tri. / buy on upside brkout on increased volume**



**LDSH symm. tri. / buy on upside brkout on increased volume**





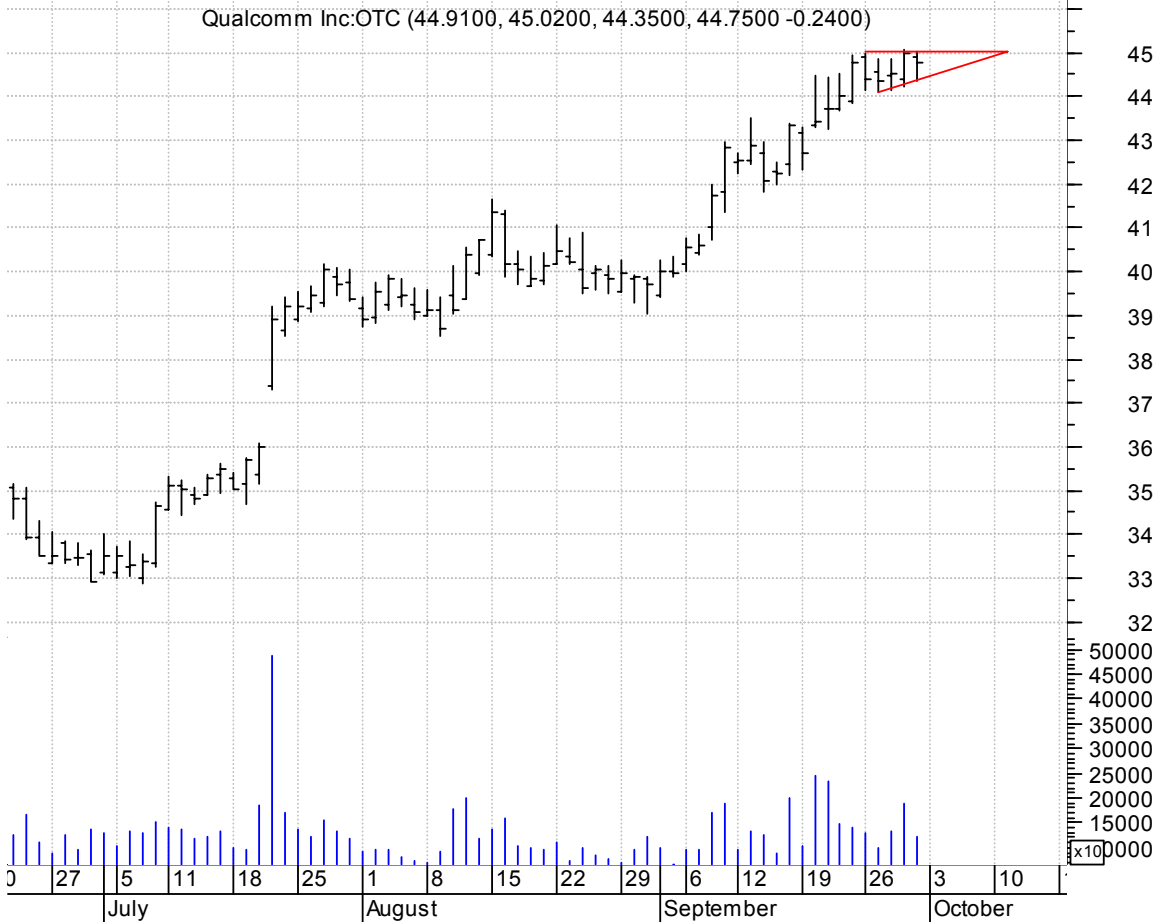
**MIVA asc. tri. / buy on upside brkout on increased volume**



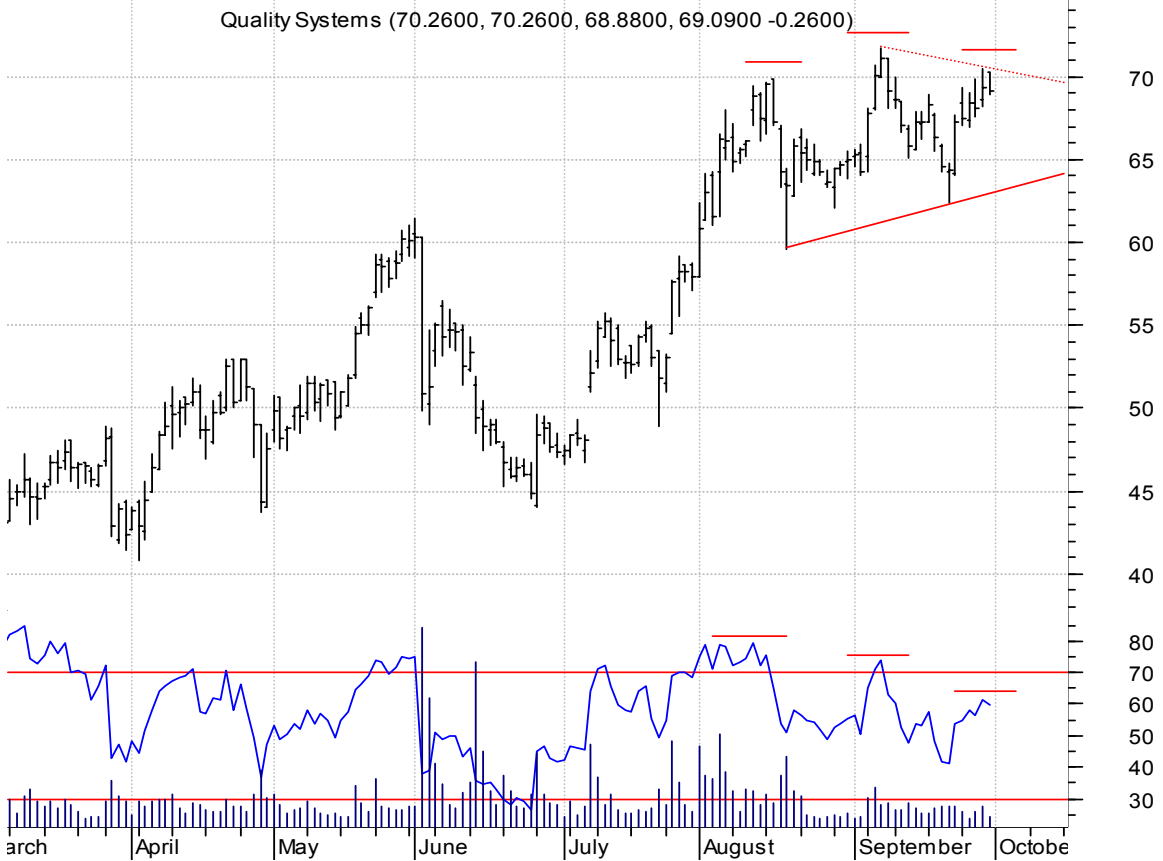
**MYS bull pennant / buy on upside brkout on increased volume**



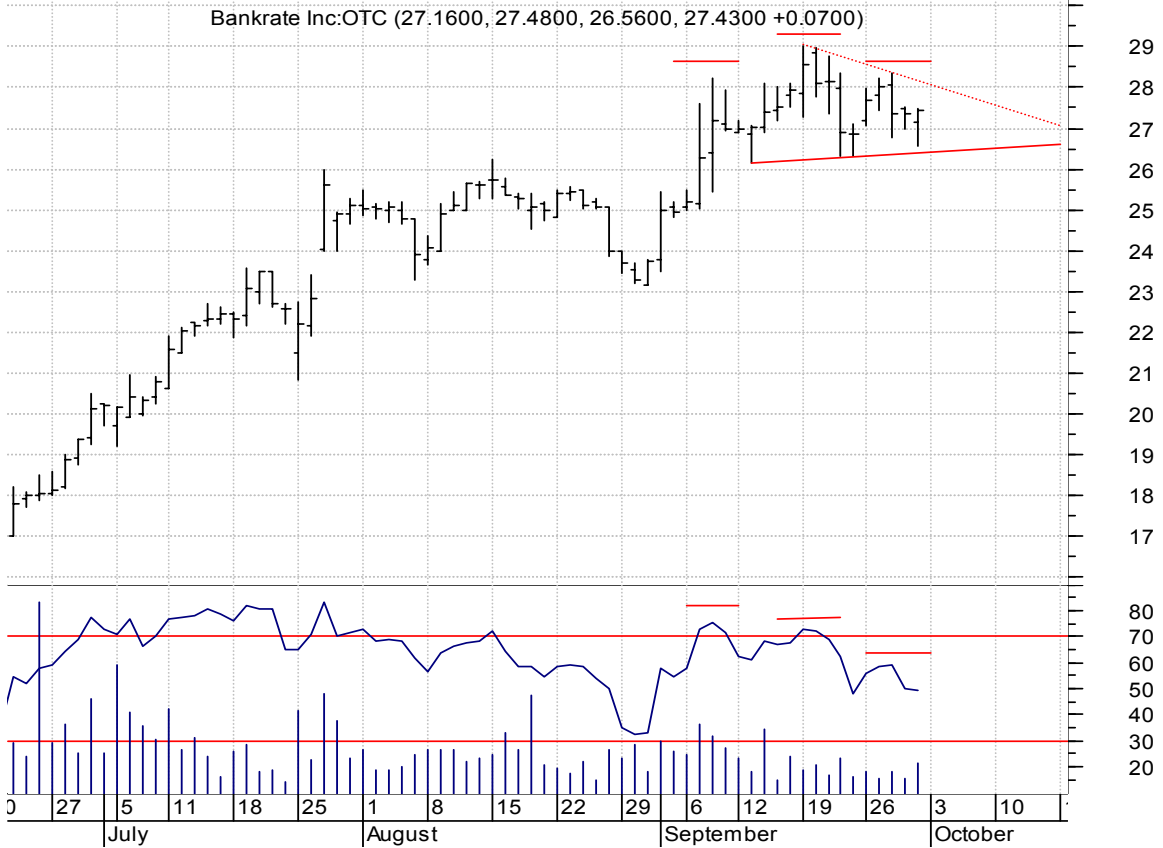
**QCOM asc. tri. / buy on upside breakout on increased volume**



**QSII h. & sh. / 1) sell on downside breakout (solid red line -- neckline) on increased volume or  
 2) buy on upside breakout (dotted red line -- pattern failure) on increased volume  
 [h. & sh. pattern failures will often times make sharp upside breakouts]**



**RATE h. & sh. / 1) sell on downside brkout (solid red line -- neckline) on increased volume or  
 2) buy on upside brkout (dotted red line -- pattern failure) on increased volume  
 [h. & sh. pattern failures will often times make sharp upside breakouts]**

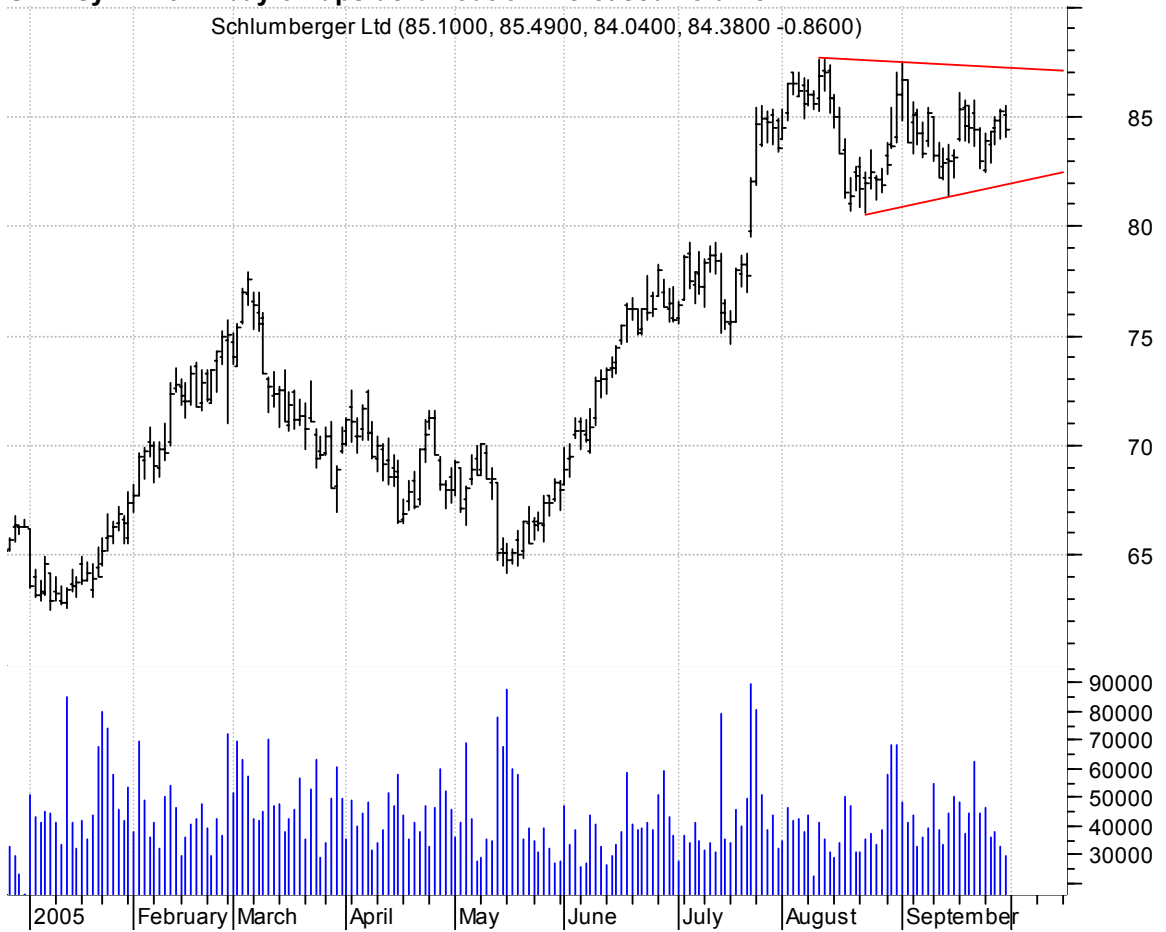


**RMIX symm. tri. / buy on upside brkout on increased volume**



**SLB symm. tri. / buy on upside brkout on increased volume**

Schlumberger Ltd (85.1000, 85.4900, 84.0400, 84.3800 -0.8600)



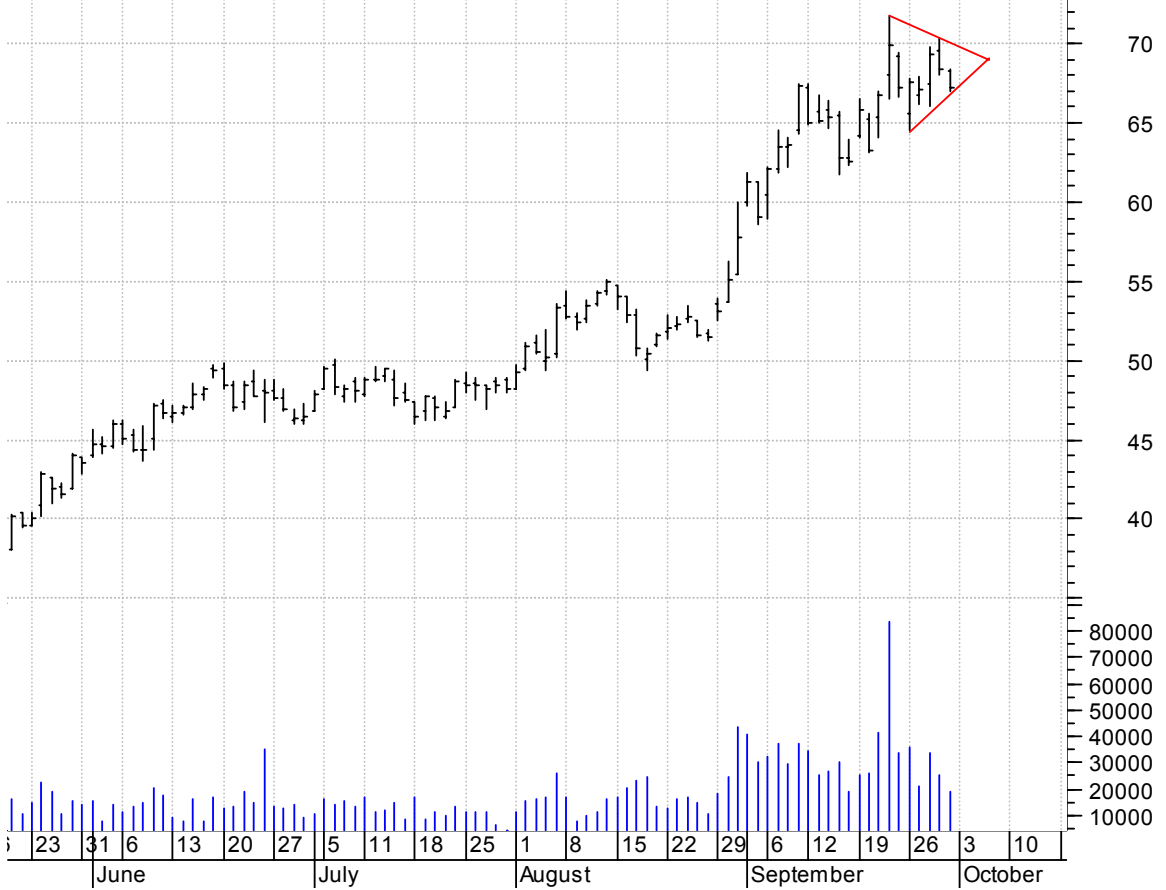
**SPIL symm. tri. brkout / buy on upside brkout thru dotted red line on increased volume**

Siliconware Prec (5.1000, 5.1800, 5.0100, 5.1800 +0.1200)



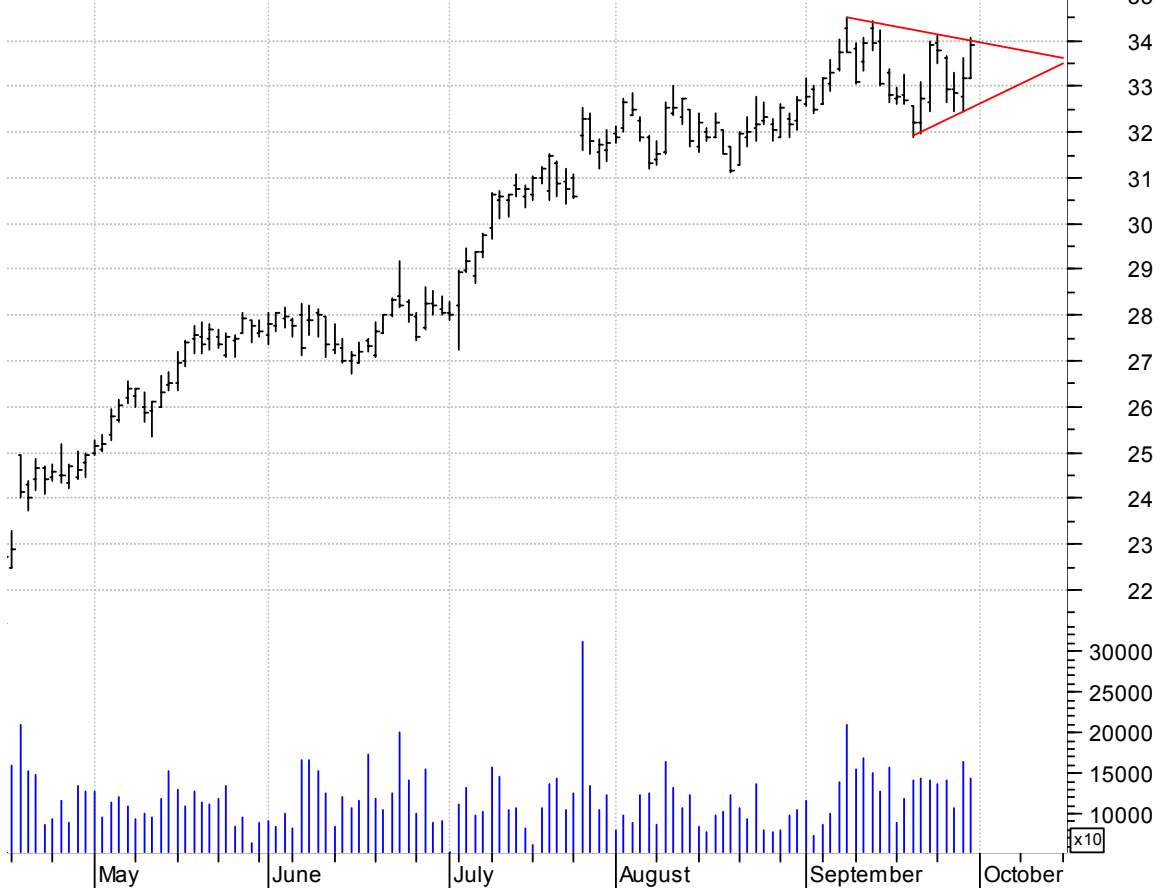
**TSO symm. tri. / buy on upside breakout on increased volume**

Tesoro Corp:NYSE (68.2900, 68.3500, 66.9500, 67.2400 -1.1100)

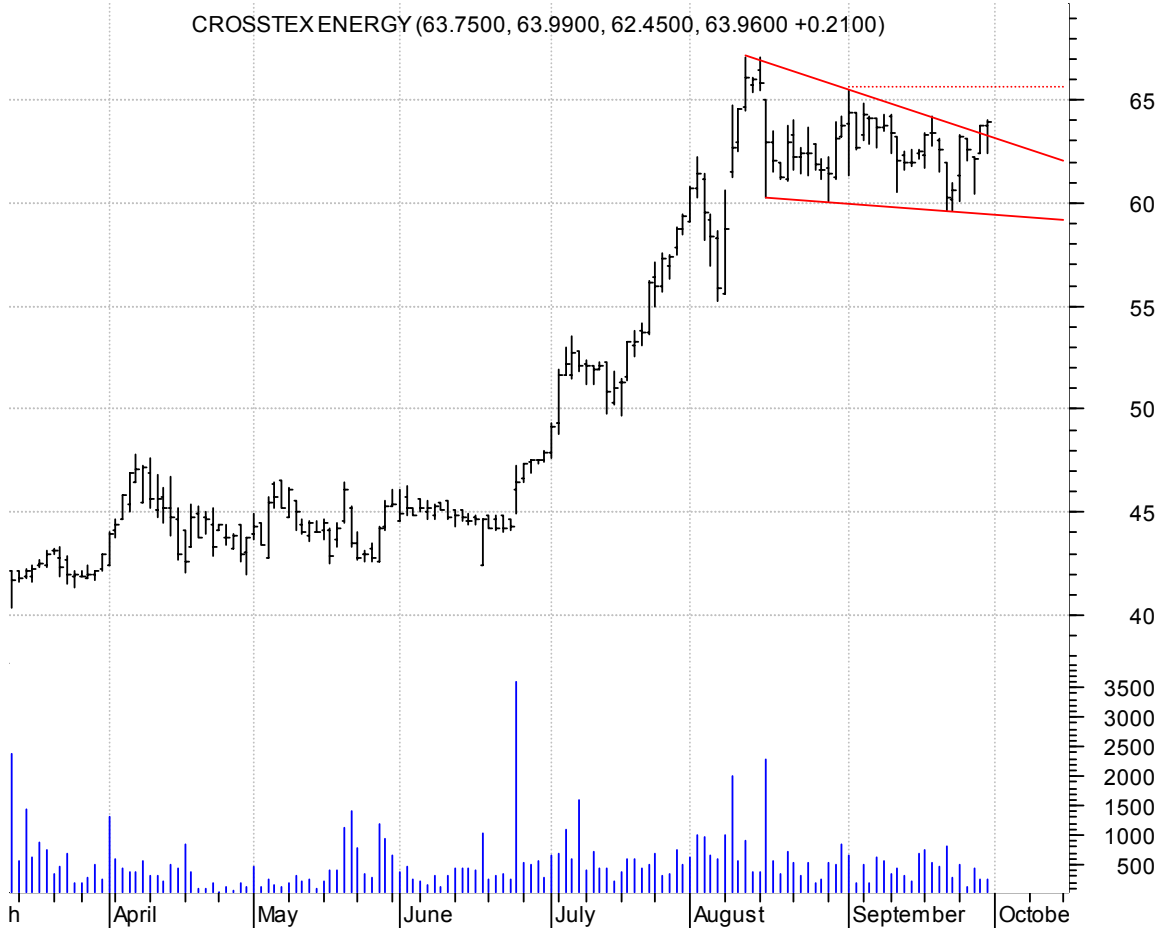


**TXN symm. tri. / buy on upside breakout on increased volume**

Texas Instrument (33.1800, 34.0500, 33.1800, 33.9000 +0.7200)



**XTXI falling wedge preceded by 'pole-like' move / buy on upside brkout thru dotted red line on increased volume**



**chartpatterns.com**

Chart Pattern Analysis for Timing the Markets

[KMatras@aol.com](mailto:KMatras@aol.com)