

**AMMD symm. tri. / buy on upside brkout on increased volume**



**ASEI falling wedge preceded by 'pole-like' move / buy on upside brkout on increased volume**



**ASTSF bull pennant / buy on upside brkout on increased volume**

ASE Test Inc:OTC (7.3800, 7.5000, 7.3200, 7.4500 +0.0000)



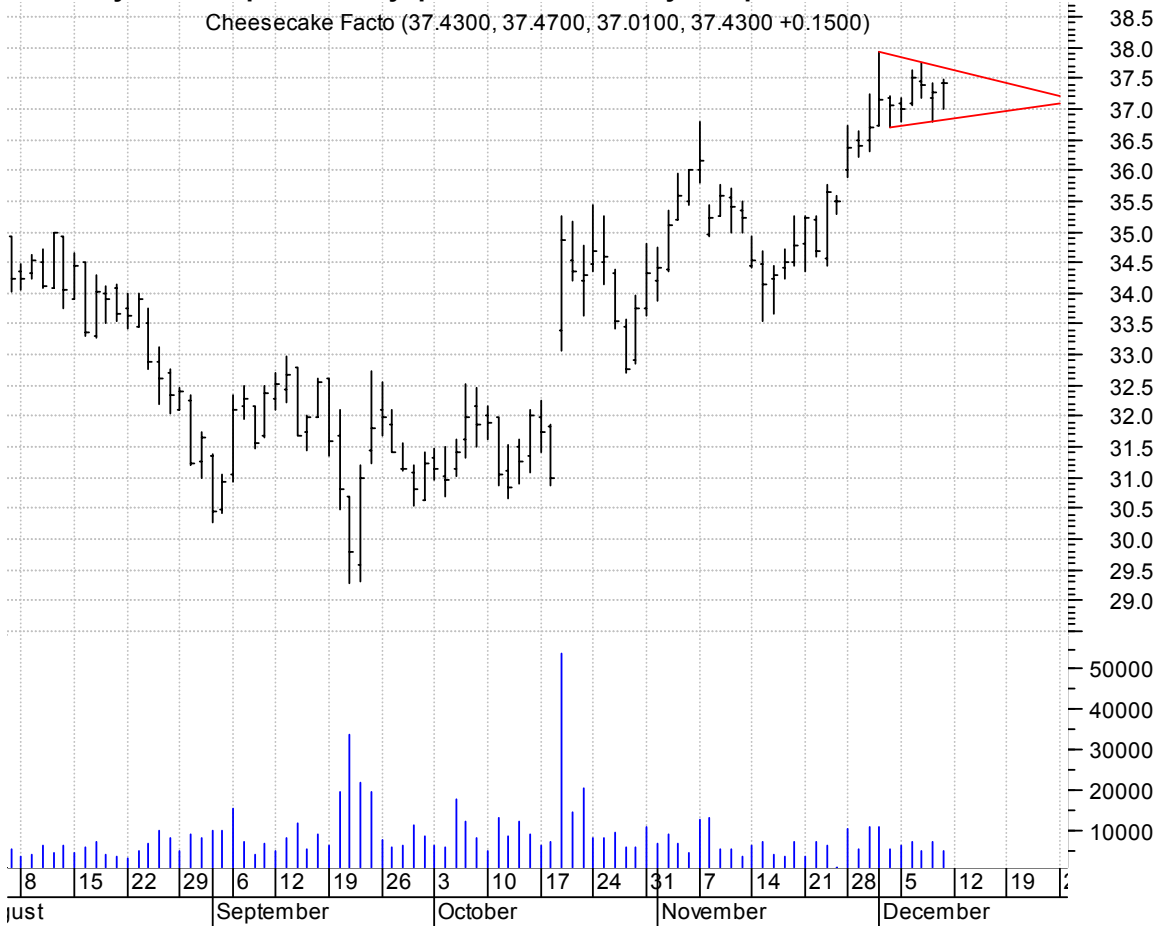
**BABY asc. tri. preceded by 'pole-like' move / buy on upside brkout on increased volume**

NATUS MEDICAL IN (17.7500, 17.7500, 17.3500, 17.5000 -0.1500)



**CAKE symm. tri. / preceded by 'pole-like' move / buy on upside brkout on increased volume**

Cheesecake Facto (37.4300, 37.4700, 37.0100, 37.4300 +0.1500)



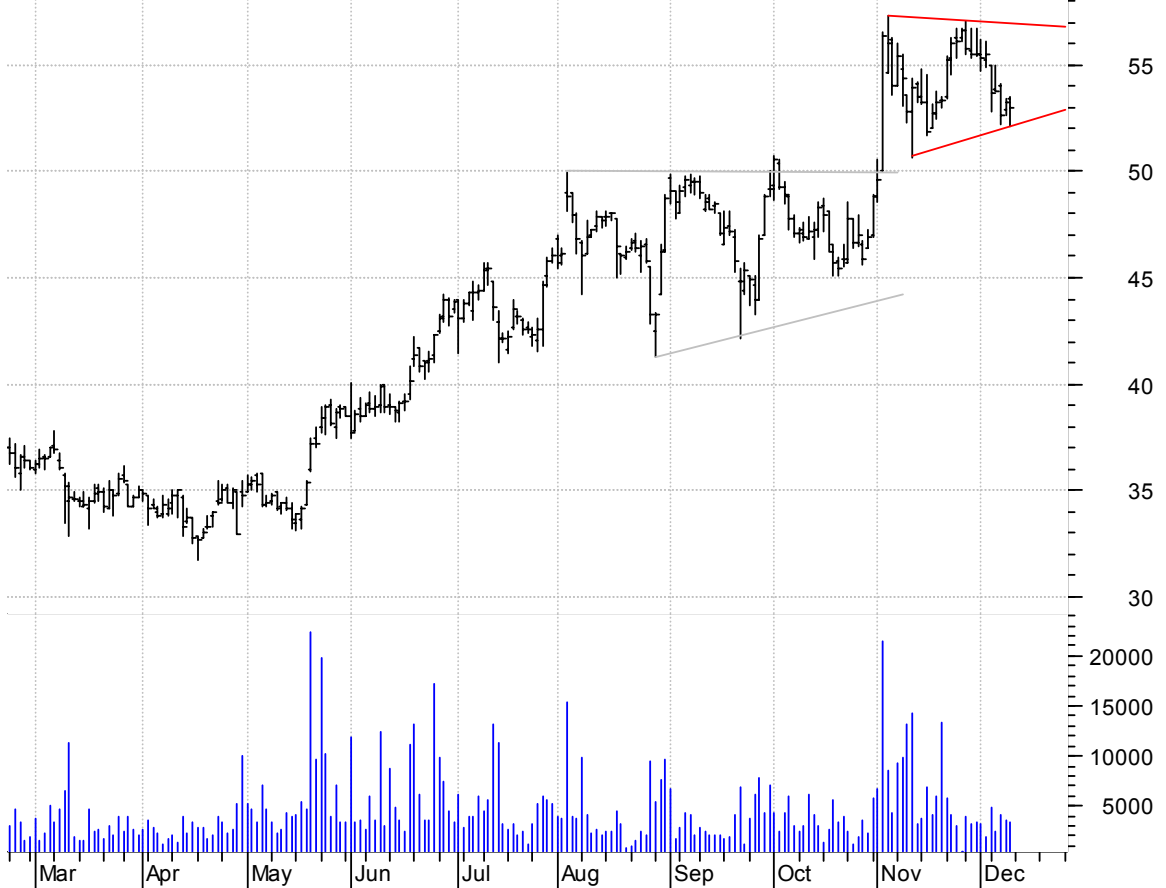
**CALP sloppy falling wedge / buy on upside brkout on increased volume**

Caliper Life Sci (7.1600, 7.2100, 7.0100, 7.1700 +0.0600)



**CBG symm. tri. preceded by 'pole-like' move / buy on upside brkout on increased volume**

CB RICHARD ELLIS (53.4000, 53.5300, 52.0700, 53.0100 -0.2500)



**CHE sloppy asc. tri. / buy on upside brkout on increased volume**

Chemed.NYSE (50.9100, 51.6100, 50.7500, 51.5000 +0.6500)



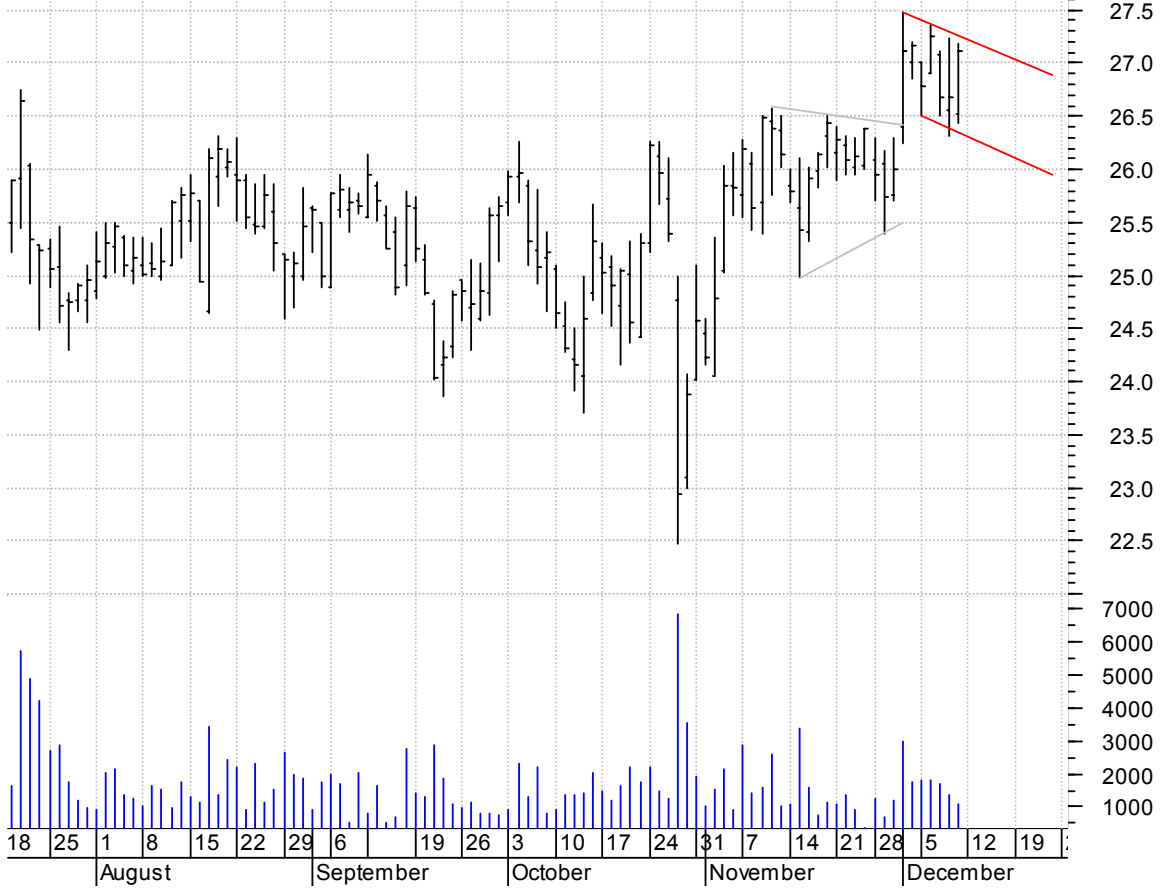
**CRI symm. tri. / buy on upside brkout on increased volume**

CARTERS INC:NYSE (63.3000, 63.4000, 59.7700, 61.2500 -1.7700)



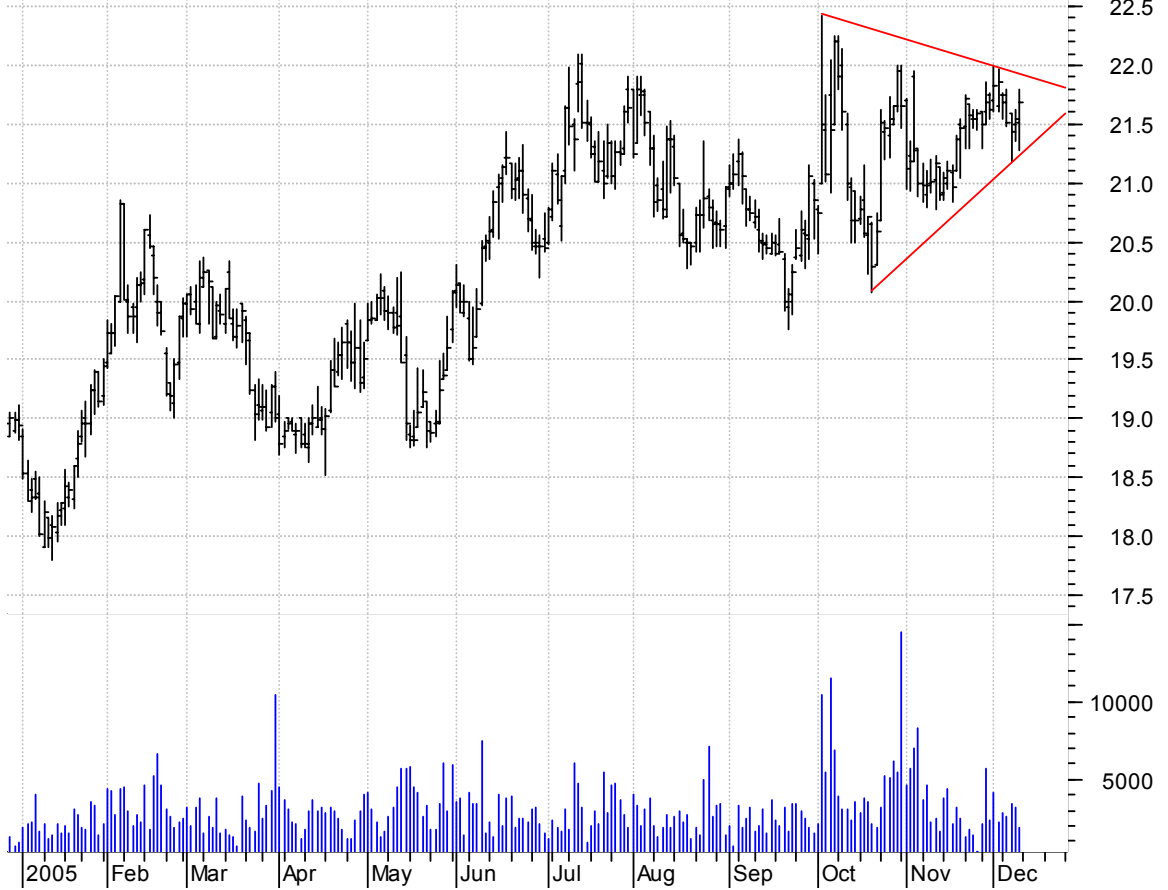
**DSPG bullish flag / buy on upside brkout on increased volume**

DSP Group Inc:OT (26.5300, 27.1900, 26.4300, 27.1100 +0.4400)



**EE symm. tri. / buy on upside breakout on increased volume**

El Paso Electric (21.5200, 21.7900, 21.2800, 21.6800 +0.1300)



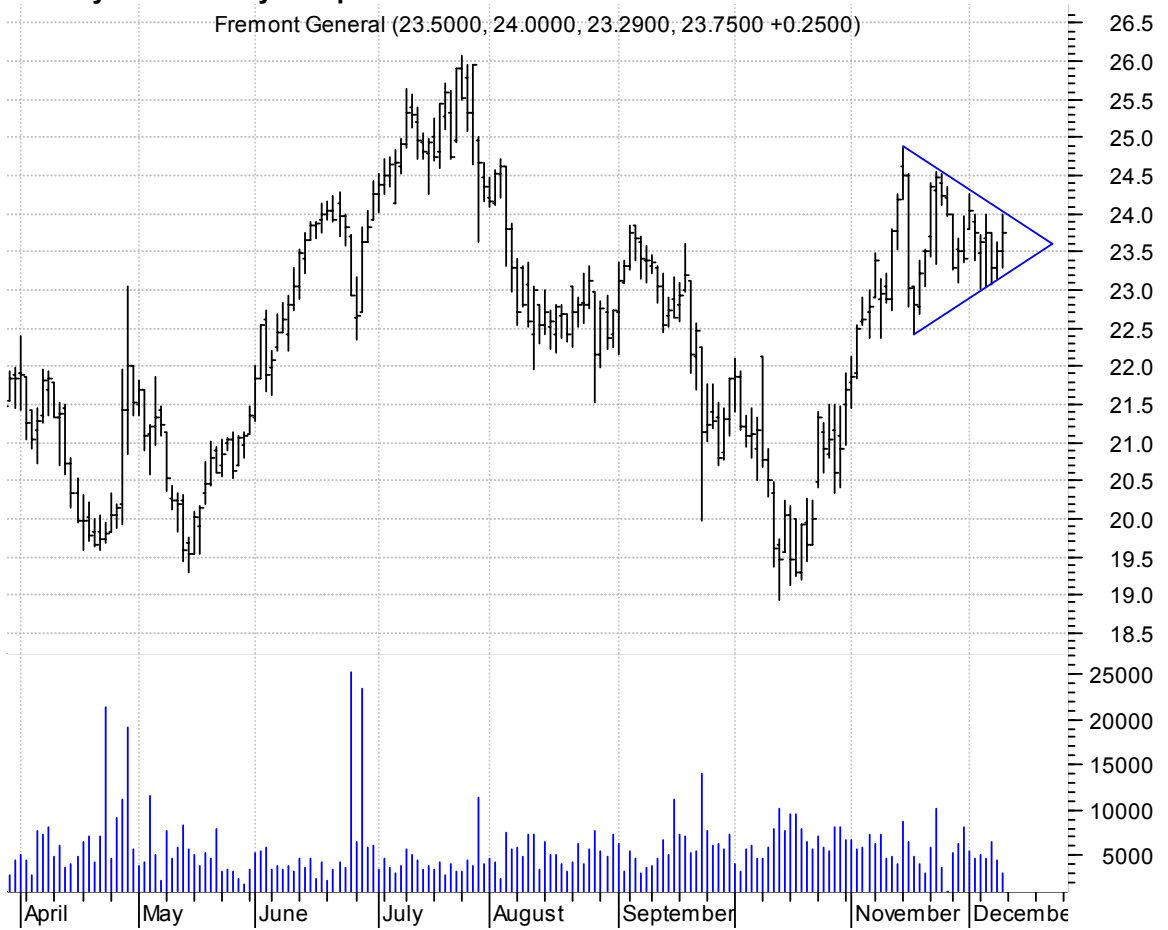
**ESI asc. tri. preceded by 'pole-like' move / buy on upside breakout on increased volume**

ITT Educational (61.2800, 61.4400, 60.5400, 61.0600 -0.2000)



**FMT symm. tri. / buy on upside brkout on increased volume**

Fremont General (23.5000, 24.0000, 23.2900, 23.7500 +0.2500)



**HOC asc. tri. / buy on upside brkout on increased volume**

Holly Cp:NYSE (63.2000, 63.2000, 61.7400, 62.2800 -1.1200)



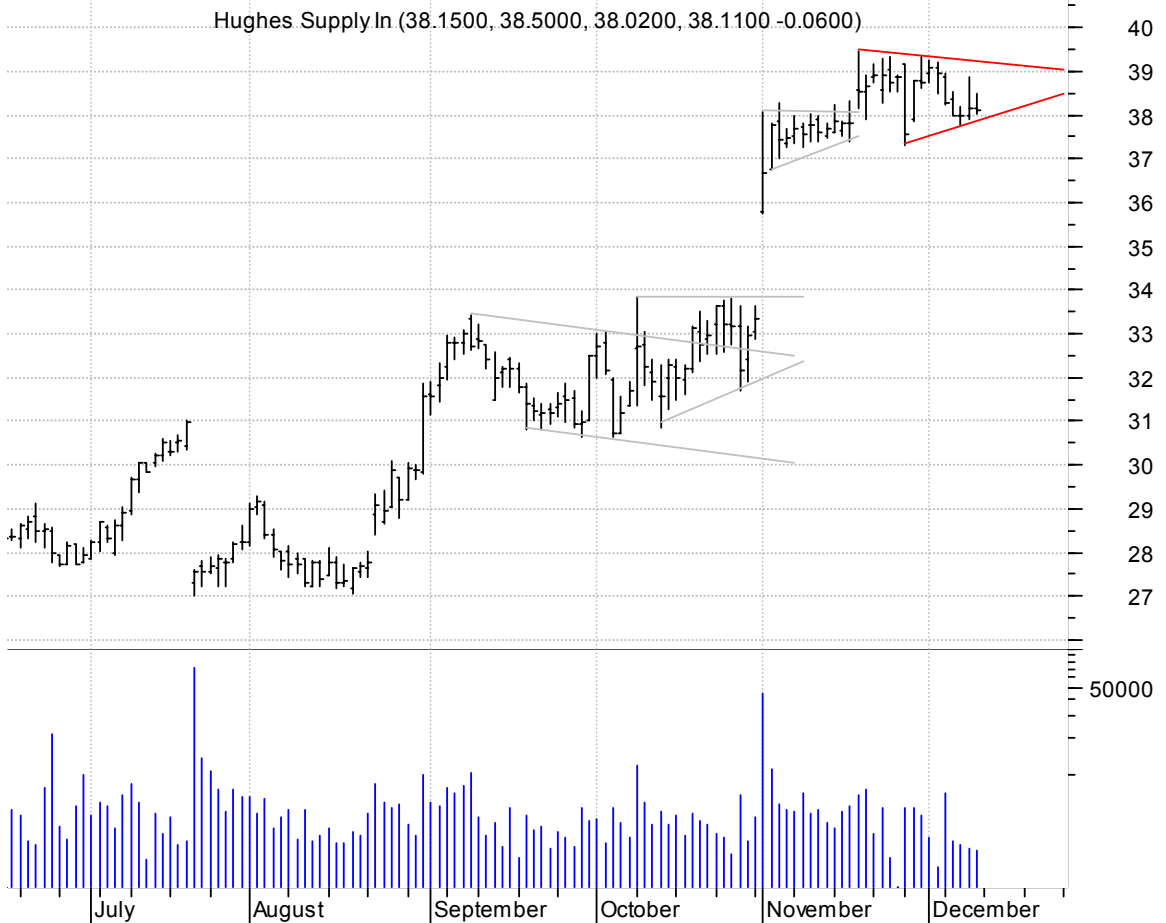
**HSII asc. tri. / buy on upside brkout on increased volume**

Heidrick & Strug (33.4700, 33.5500, 33.1500, 33.3800 +0.1400)



**HUG symm. tri. preceded by 'pole-like' move / buy on upside brkout on increased volume**

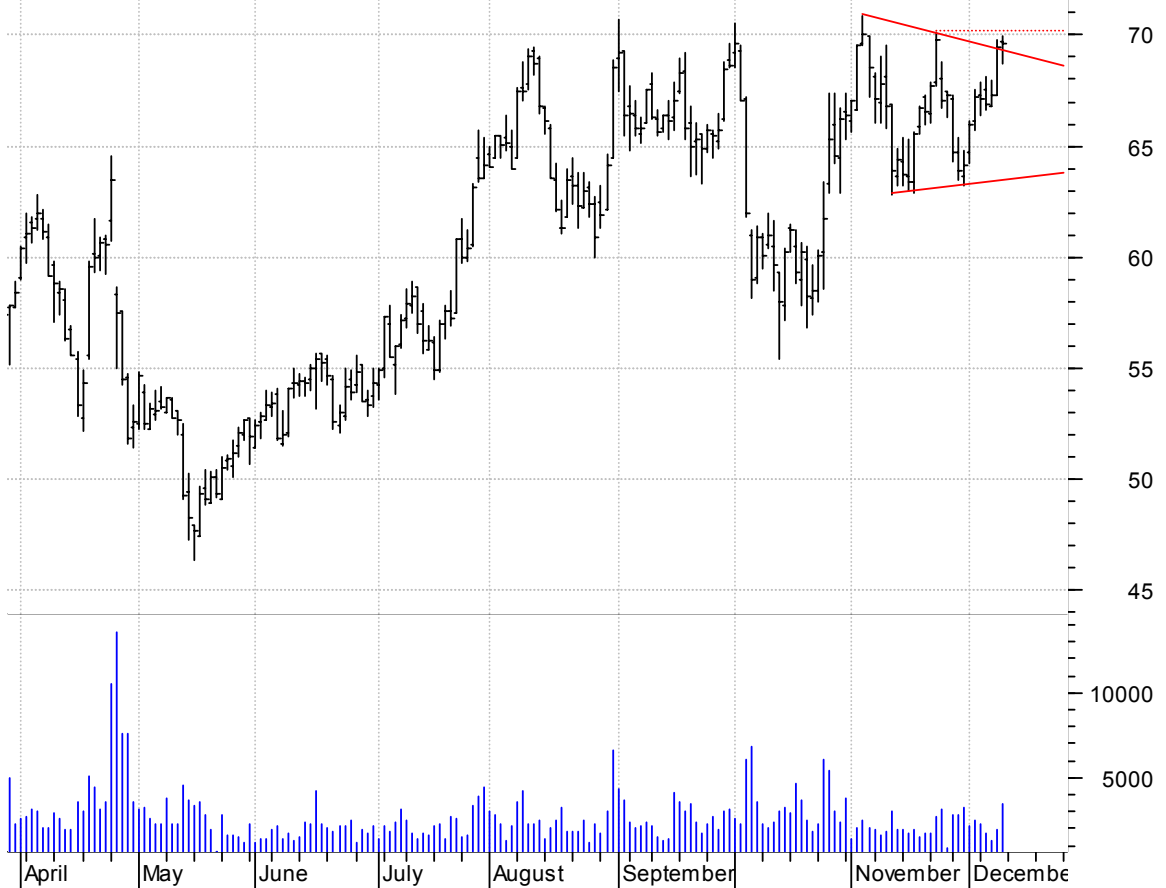
Hughes Supply In (38.1500, 38.5000, 38.0200, 38.1100 -0.0600)





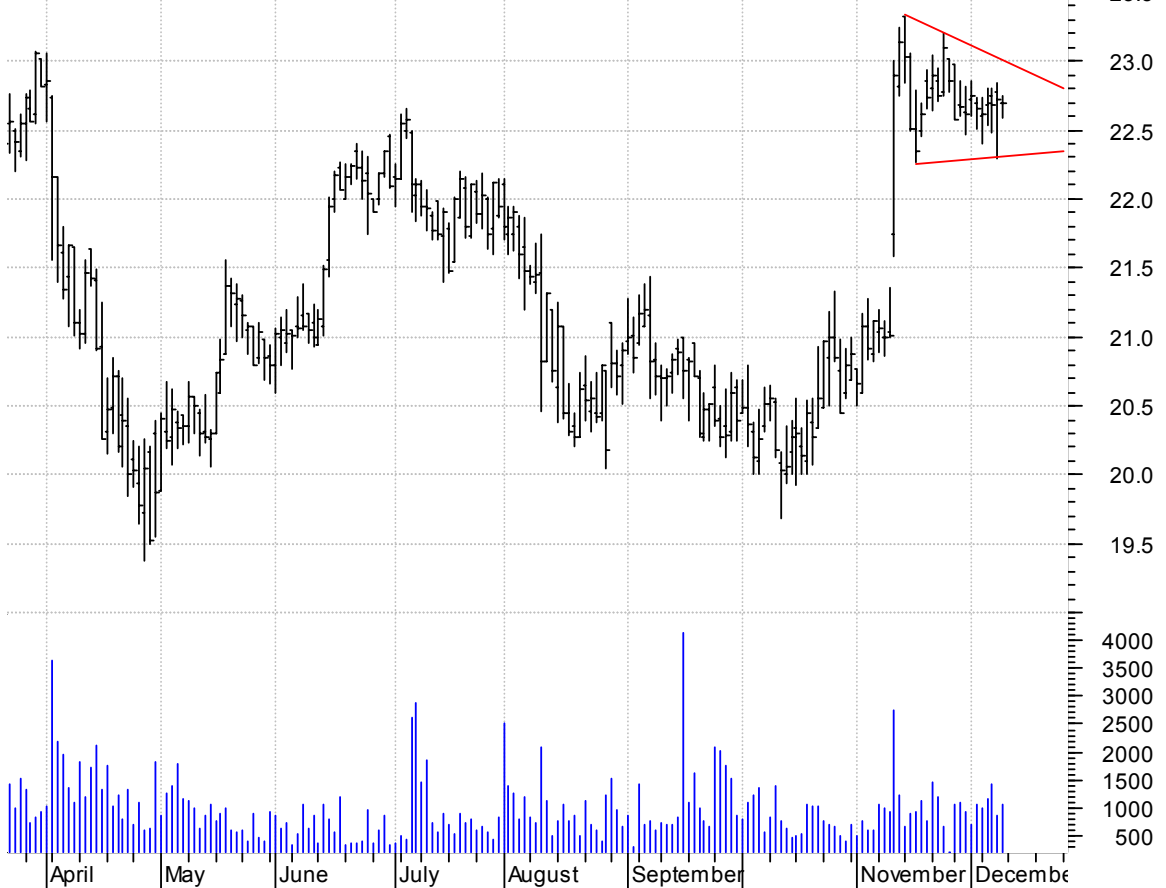
**HYDL symm. tri. breakout / buy on upside follow-thru (dotted red line) on larger than normal volume**

HYDRILL CO:OTC (69.7300, 69.9400, 68.6700, 69.6000 +0.1600)



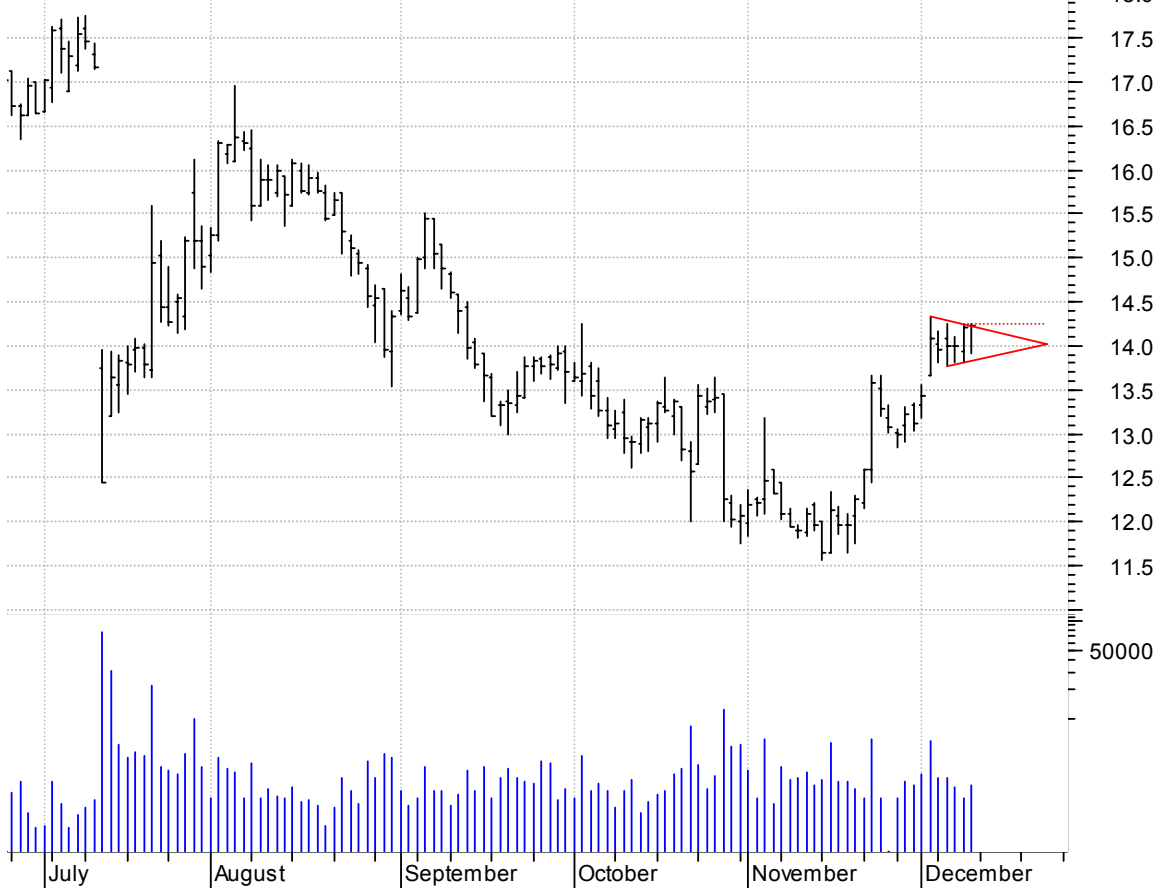
**IFC symm. tri. preceded by 'pole-like' move / buy on upside breakout on increased volume**

Irwin Financial (22.7000, 22.7500, 22.5900, 22.6900 -0.0300)



**IFLO symm. tri. / buy on upside brkout (dotted red line) on larger than normal volume**

I-flow Corp:OTC (14.2400, 14.2500, 13.9100, 14.2400 +0.0400)



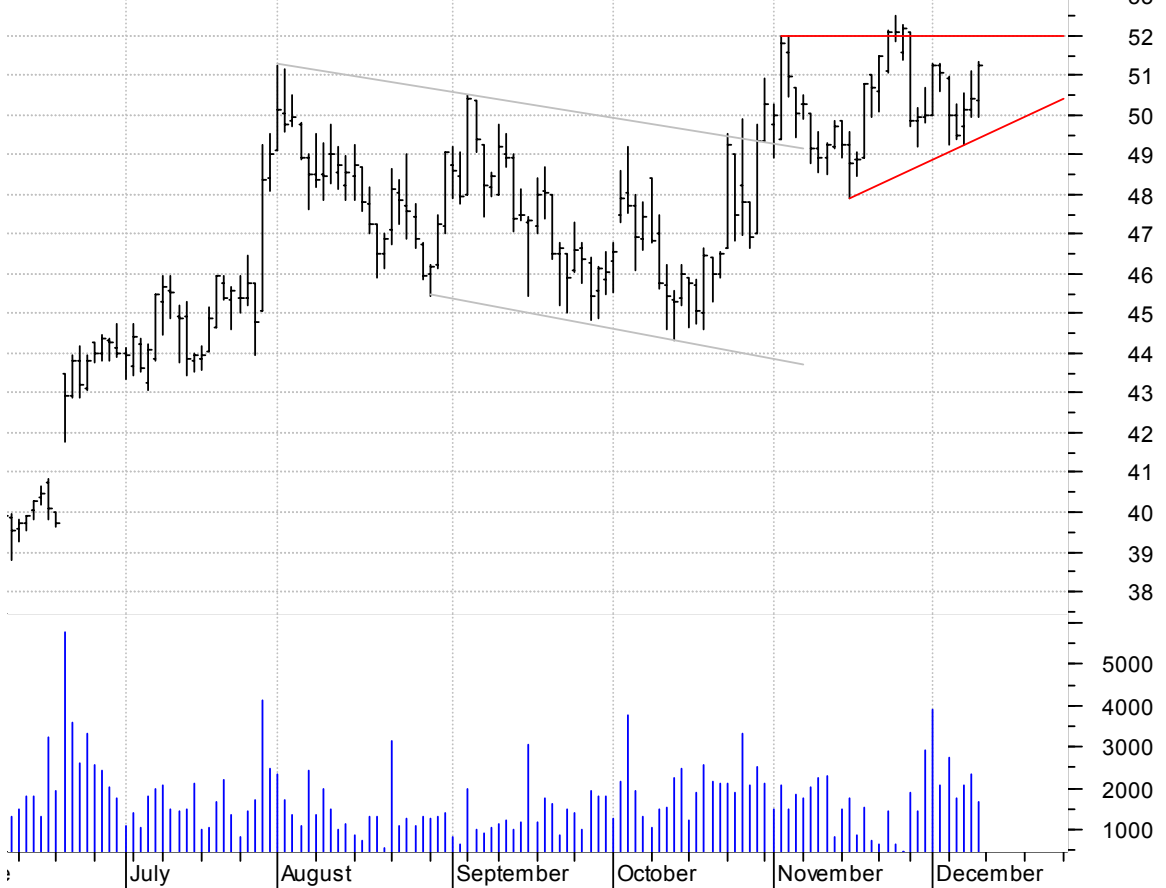
**ISRG sloppy asc. tri. preceded by 'pole-like' move / buy on upside brkout on increased volume**

Intuitive Surgic (112.020, 116.890, 112.000, 116.490 +4.5900)



**JLL sloppy asc. tri. / buy on upside breakout on larger than normal volume**

Jones Lang Lasal (50.3500, 51.3400, 49.9600, 51.2500 +0.8300)



**KFRC bullish flagging / buy on upside breakout on increased volume**

Kforce Inc:OTC (12.3300, 12.3500, 11.9100, 12.2200 -0.0200)



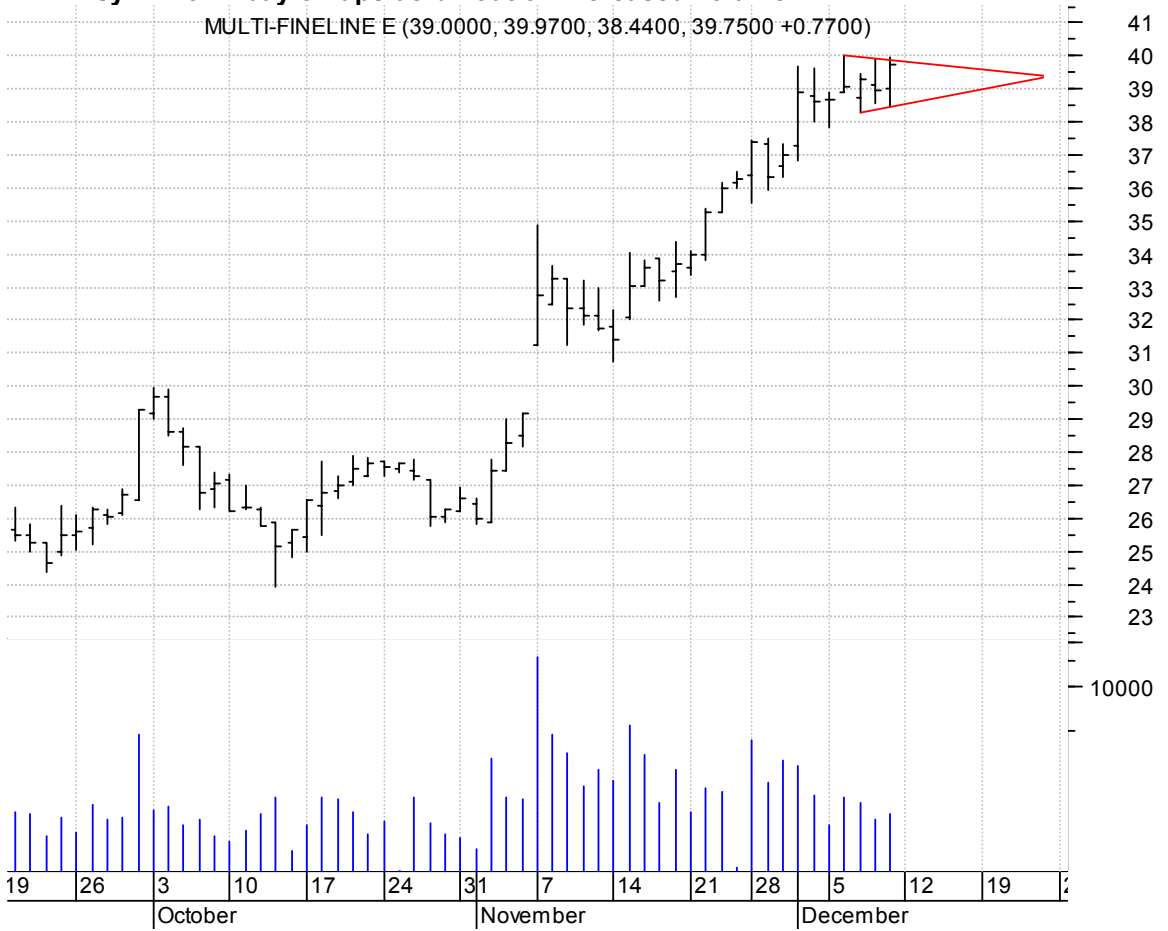
**LECO symm. tri. / buy on upside breakout on increased volume**

Lincoln Electric (40.4900, 41.3200, 40.4400, 41.1200 +0.6000)



**MFLX symm. tri. / buy on upside breakout on increased volume**

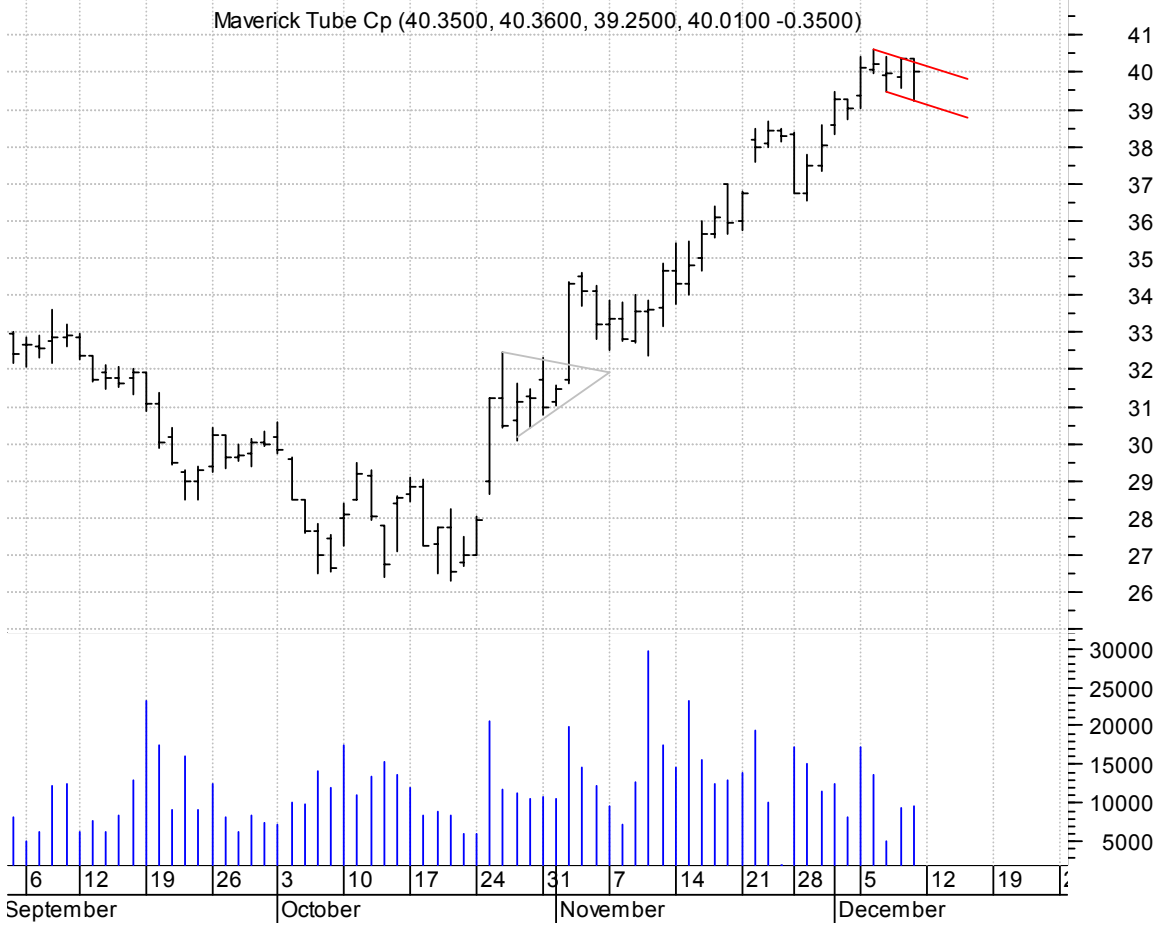
MULTI-FINELINE E (39.0000, 39.9700, 38.4400, 39.7500 +0.7700)



**MSCC symm. tri. preceded by 'pole-like' move / buy on upside breakout on increased volume**

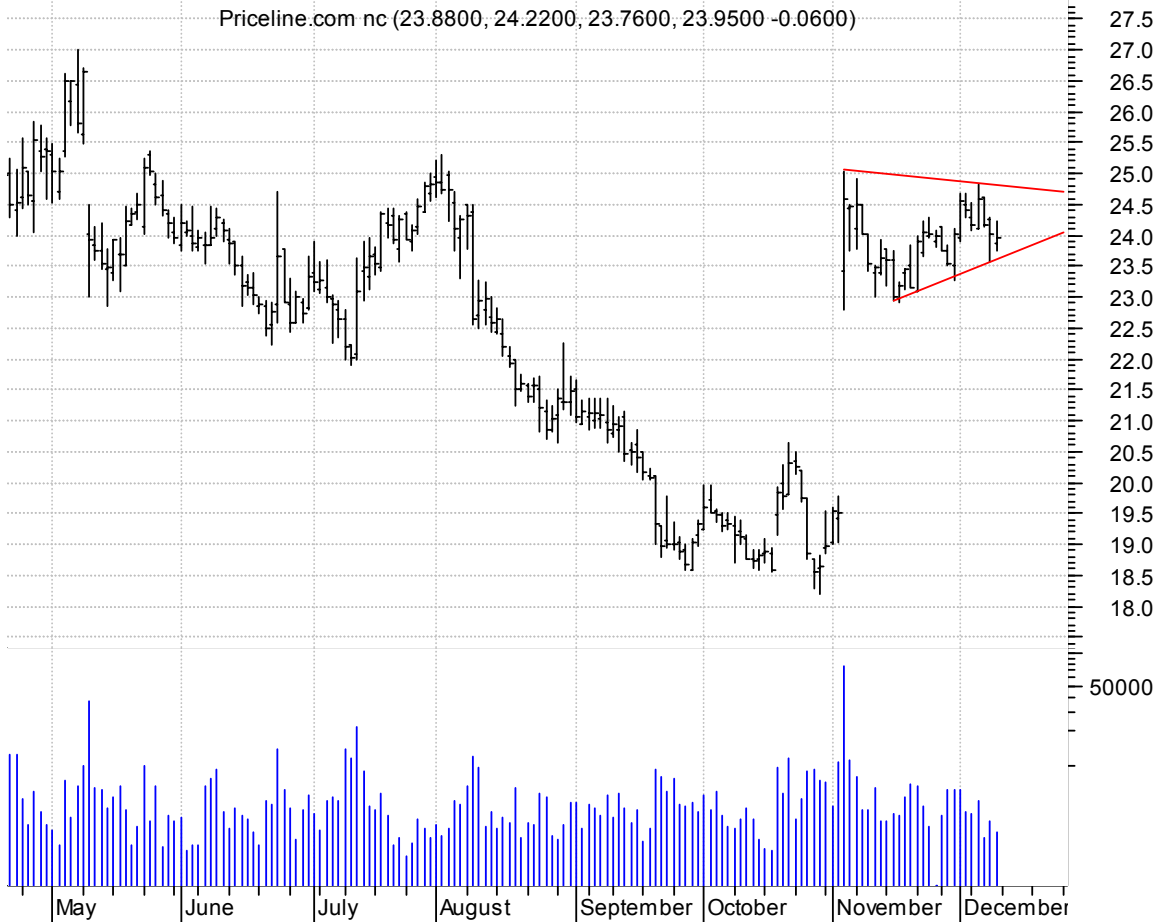


**MVK bullish flag / buy on upside breakout on increased volume**



**PCLN symm. tri. preceded by 'pole-like' move / buy on upside brkout on increased volume**

Priceline.com nc (23.8800, 24.2200, 23.7600, 23.9500 -0.0600)

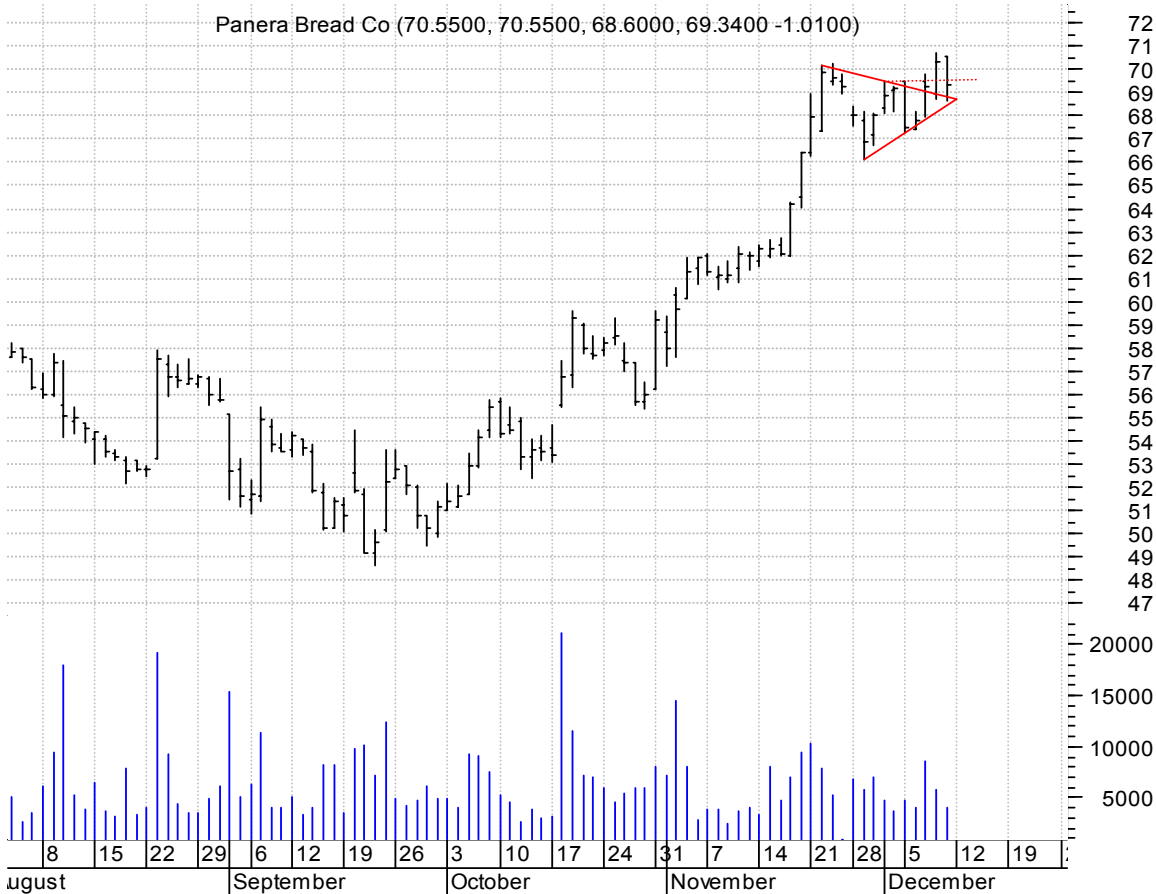


**PCP asc. tri. / buy on upside brkout on increased volume**

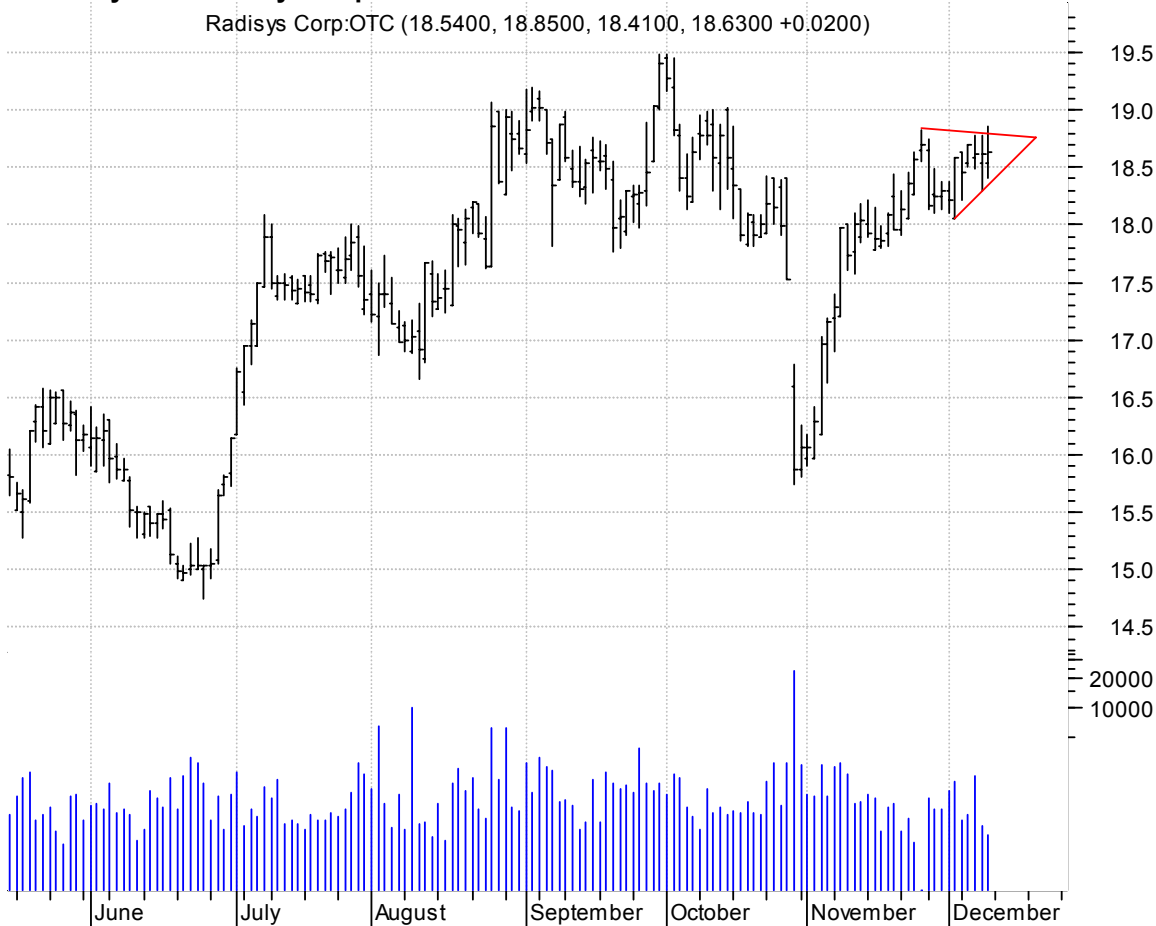
Precision Castpa (51.7700, 51.9300, 50.9800, 51.0000 -0.4700)



**PNRA symm. tri. (preceded by pole-like' move) brkout and retracement / buy on upside brkout thru dotted red line on increased volume**



**RSYS symm. tri. / buy on upside brkout on increased volume**



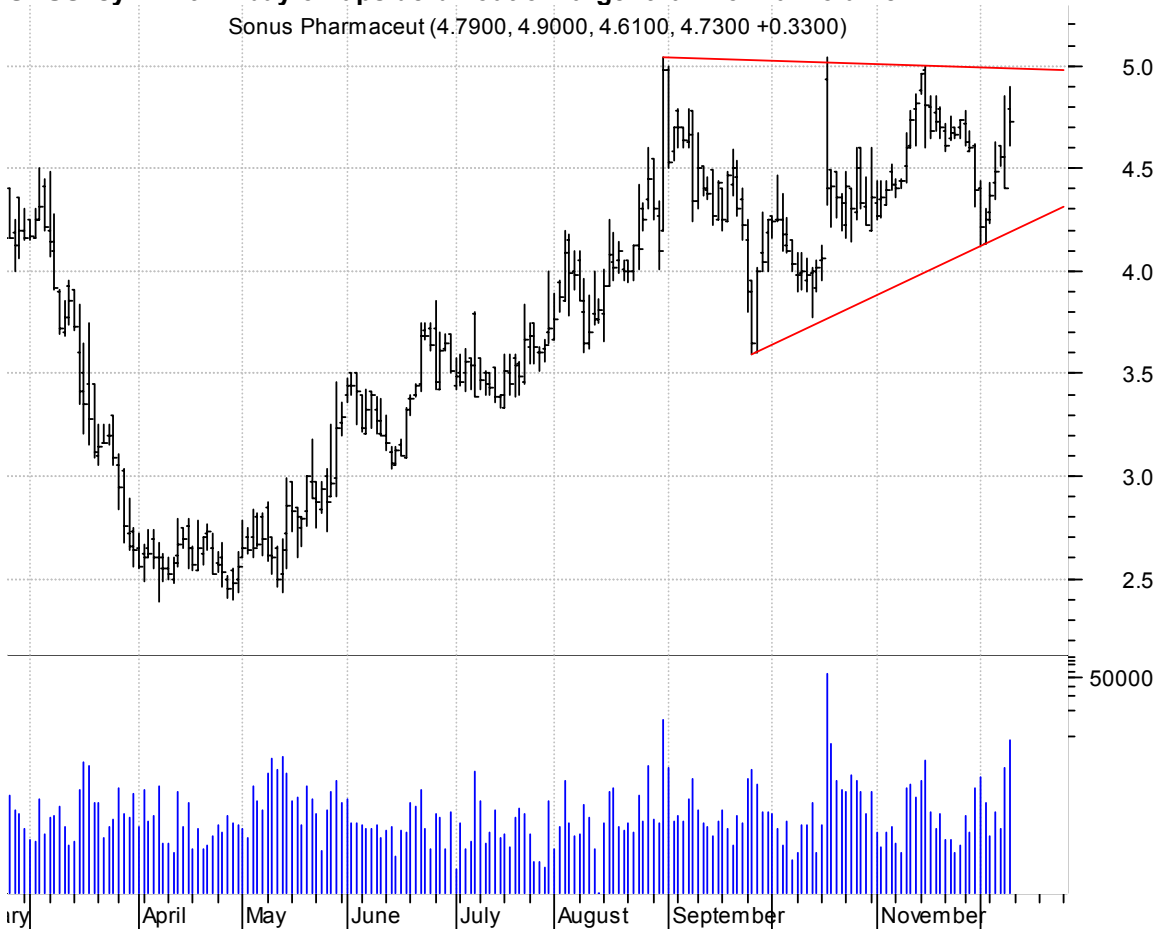
**SMSC bull flag / buy on upside breakout on increased volume**

Standard Microsy (32.6900, 32.7500, 31.8200, 32.6500 +0.1800)



**SNUS symm. tri. / buy on upside breakout on larger than normal volume**

Sonus Pharmaceut (4.7900, 4.9000, 4.6100, 4.7300 +0.3300)





**TOO symm. tri. / buy on upside brkout on increased volume**

Too Inc.:NYSE (31.9100, 31.9100, 31.1600, 31.4800 -0.3100)



**TRN symm. tri. / buy on upside brkout on increased volume**

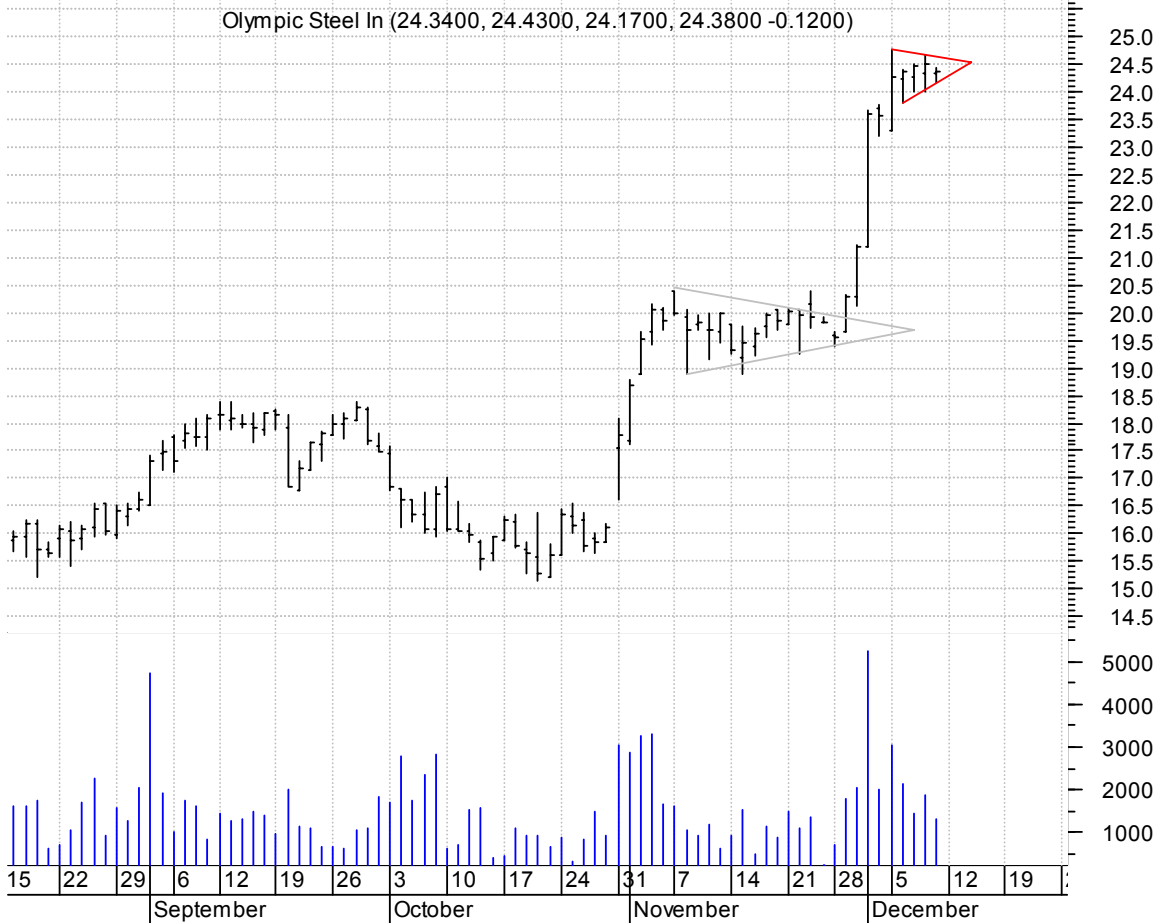
Trinity Industri (43.9800, 44.4400, 43.7300, 44.2500 +0.2500)



**UPL symm. tri. preceded by 'pole-like' move / buy on upside breakout on increased volume**



**ZEUS bull pennant / buy on upside breakout on increased volume**



**chartpatterns.com**  
Chart Pattern Analysis for Timing the Markets

[KMatras@aol.com](mailto:KMatras@aol.com)