

**AAUK symm. tri. / buy on upside breakout on larger than normal volume**

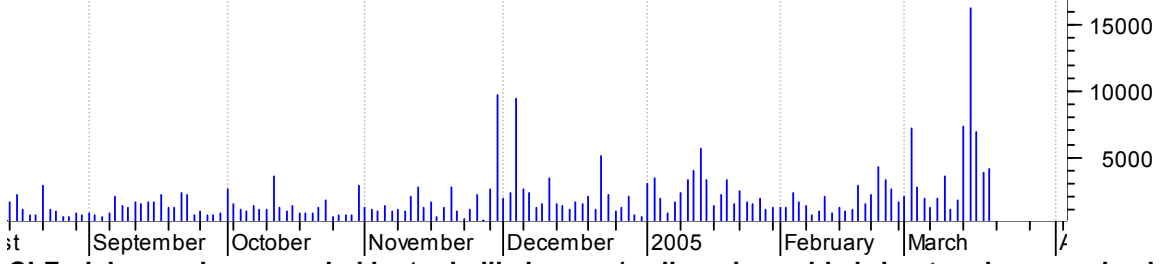
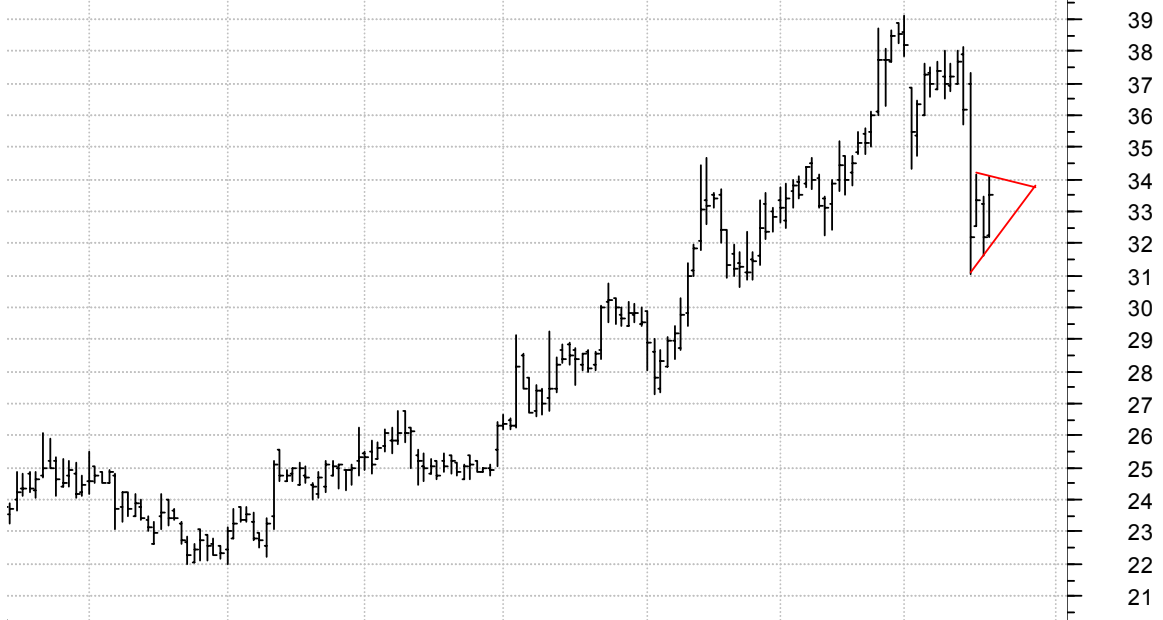


**BLL symm. tri. / buy on upside breakout on increased volume**



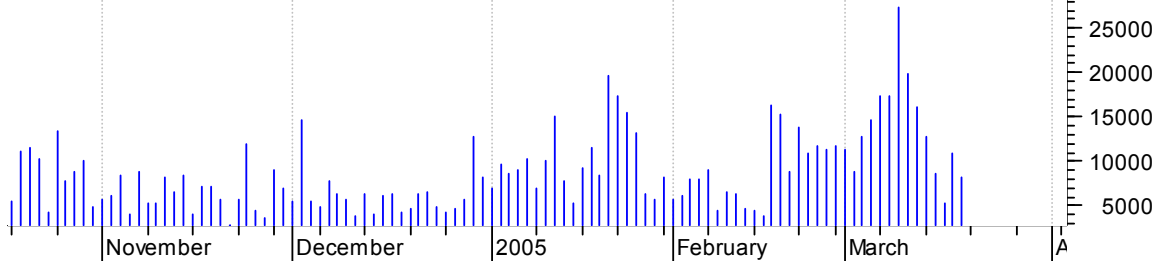
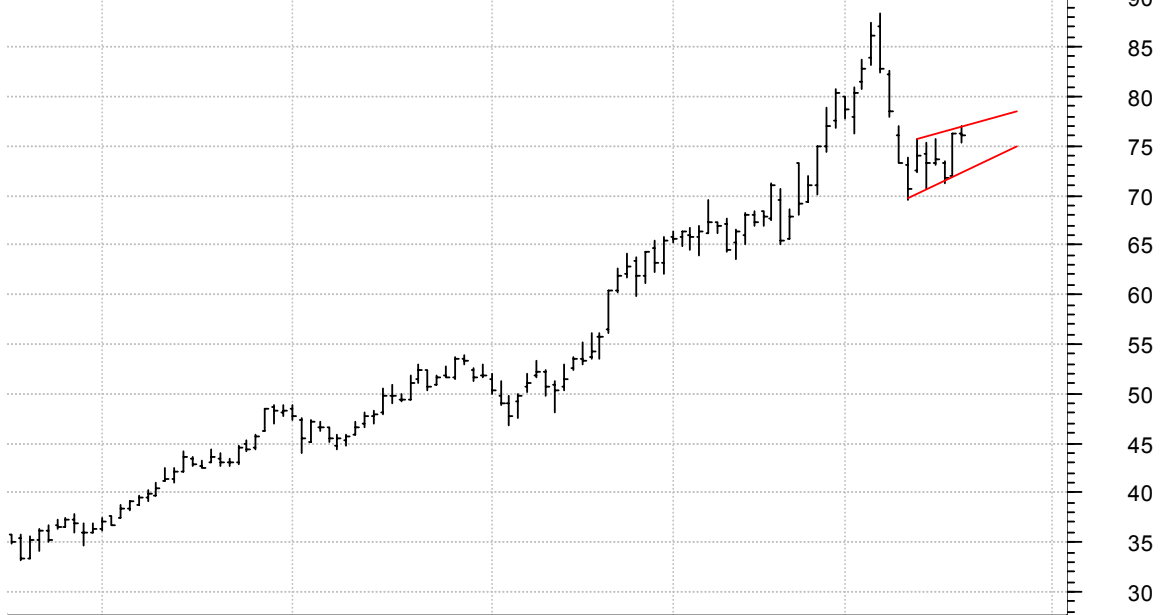
**CEDC bearish pennant / sell on downside brkout on increased volume**

Central European (32.2700, 34.0900, 32.2000, 33.5200 +1.3100)



**CLF rising wedge preceded by 'pole-like' move / sell on downside brkout on increased volume**

Cleveland-Cliffs (76.3400, 76.9500, 75.3200, 76.0600 -0.1400)



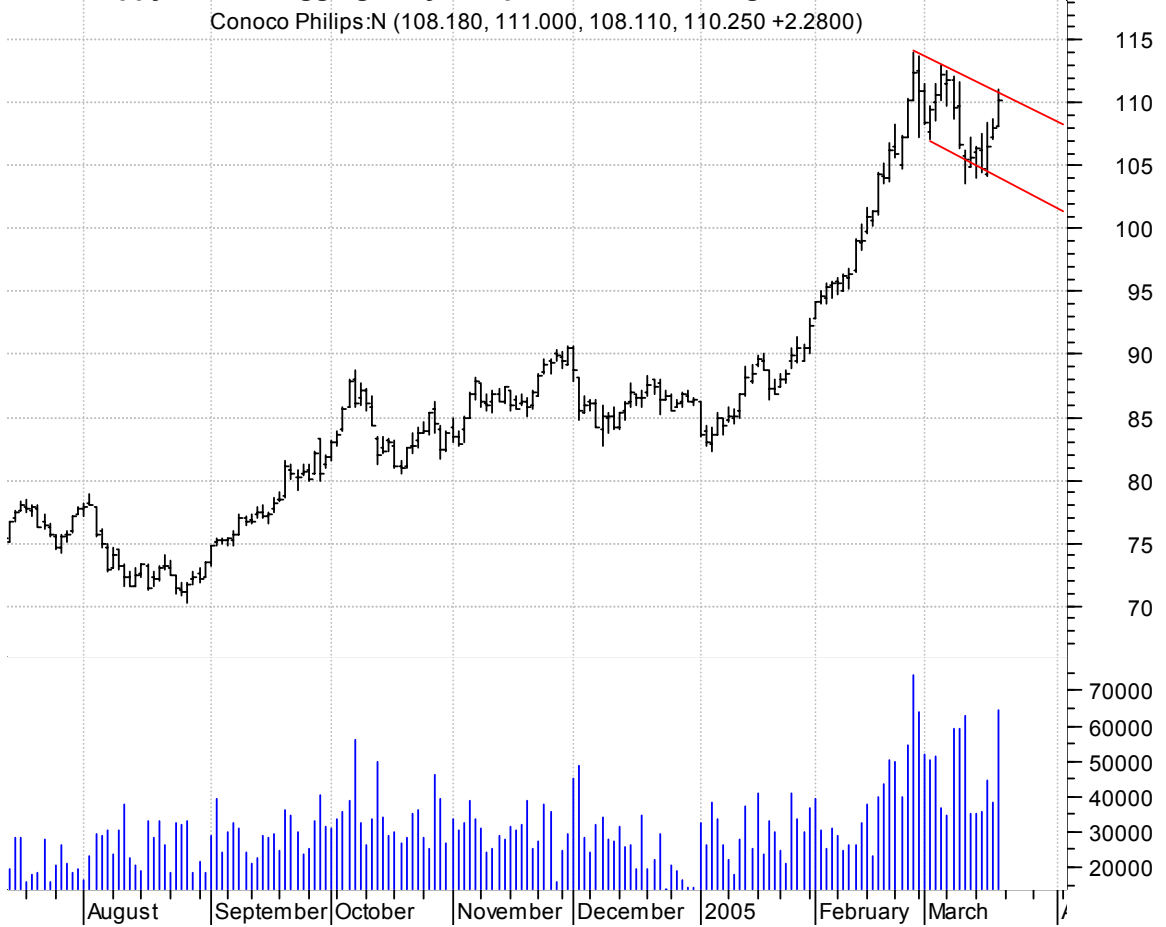
**CMCO symm. tri. / buy on upside brkout on increased volume**

Columbus McKinnon (12.1000, 12.9700, 12.1000, 12.8000 +0.5500)



**COP sloppy bullish flagging / buy on upside brkout on larger than normal volume**

Conoco Philips:N (108.180, 111.000, 108.110, 110.250 +2.2800)



**CVC symm. tri. / buy on upside breakout on increased volume**

Cablevision Sys (29.7400, 29.9400, 29.2300, 29.7200 +0.0300)



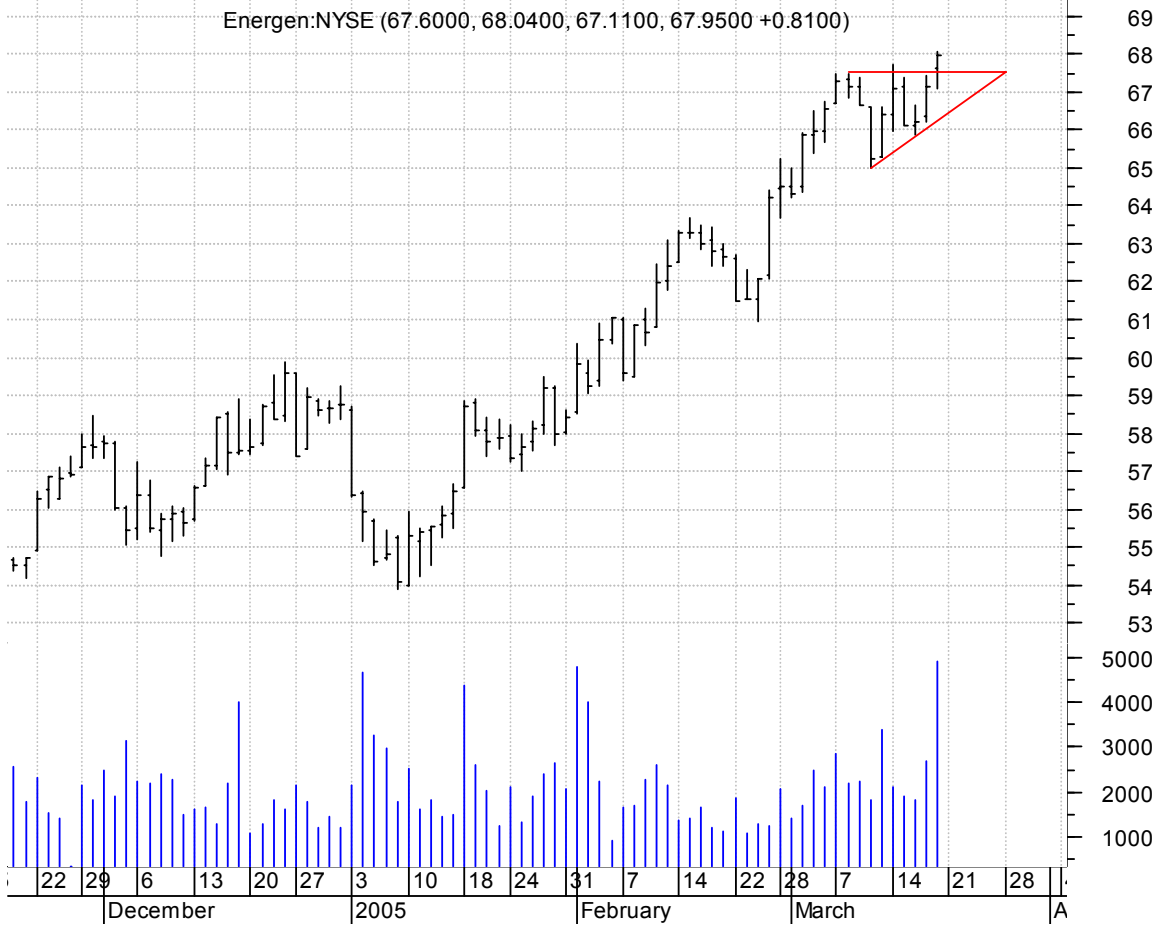
**DHI falling wedge / buy on upside breakout on increased volume**

Horton DR Inc.NY (30.6000, 30.9300, 30.1200, 30.1900 -0.0900)



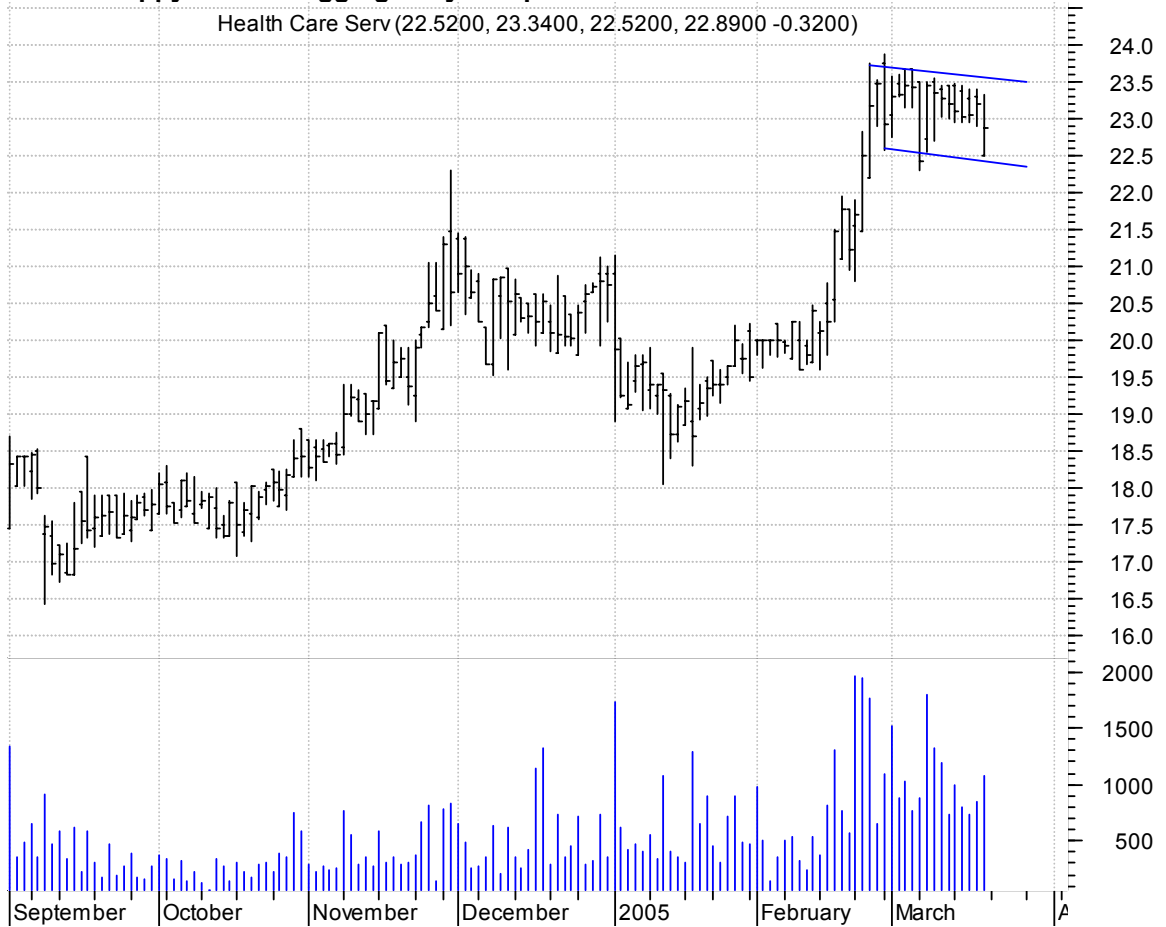
**EGN asc. tri. brkout / buy and use bottom of pattern (asc. trendline) as failure point**

Energen:NYSE (67.6000, 68.0400, 67.1100, 67.9500 +0.8100)



**HCSG sloppy bullish flagging / buy on upside brkout on increased volume**

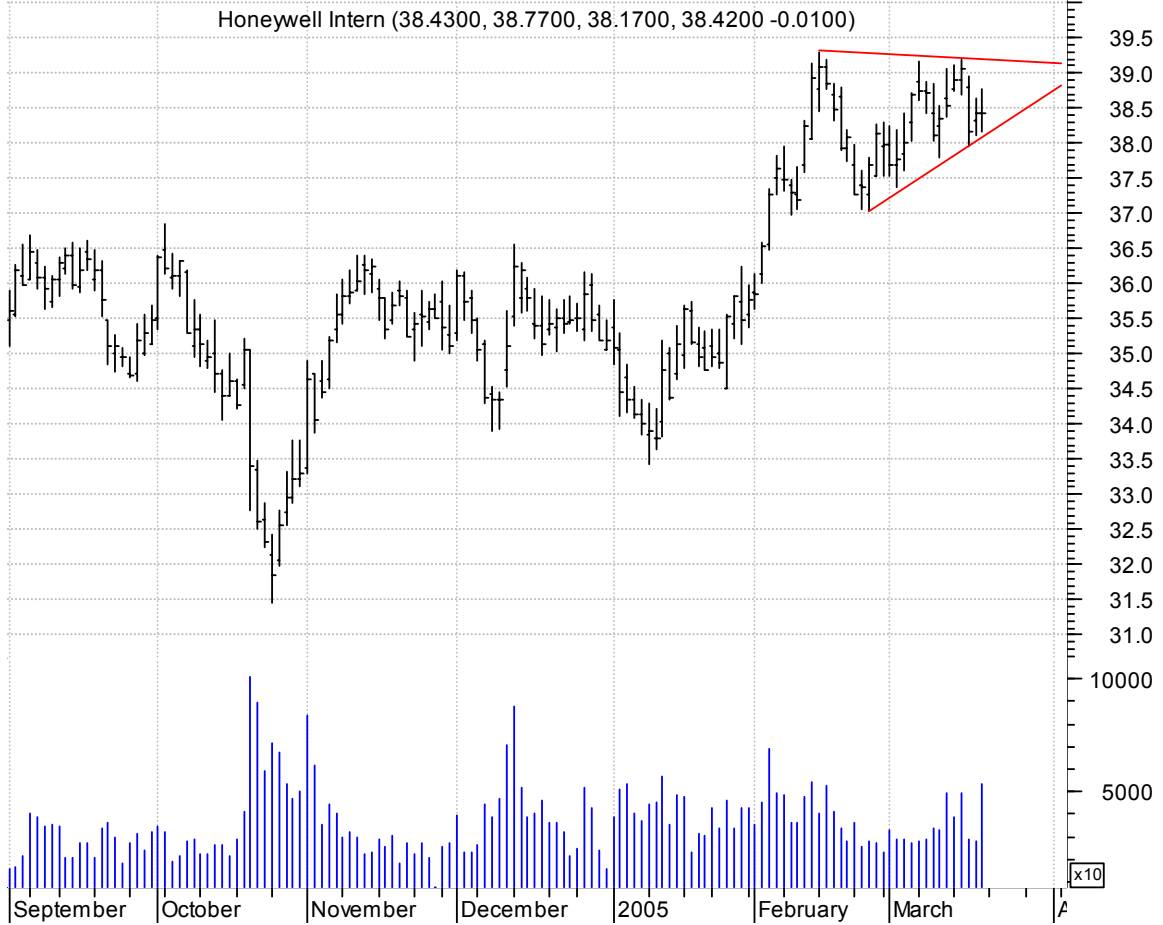
Health Care Serv (22.5200, 23.3400, 22.5200, 22.8900 -0.3200)



**HLTH sloppy asc. tri. preceded by 'pole-like' move / buy on upside brkout on increased volume**



**HON symm. tri. / buy on upside brkout on larger than normal volume**



**HUBG symm. tri. / buy on upside brkout thru dotted red line on increased volume**



**IEX falling wedge / buy on upside brkout on larger than normal volume**



**ISCA symm. tri. / buy on upside brkout on increased volume**

Intl Speedway Co (54.3100, 54.9800, 54.0600, 54.5700 +0.1200)



**JADE symm. tri. / buy on upside brkout on increased volume**

LJ Intl Inc:OTC (3.2400, 3.3300, 3.2200, 3.3200 +0.0800)





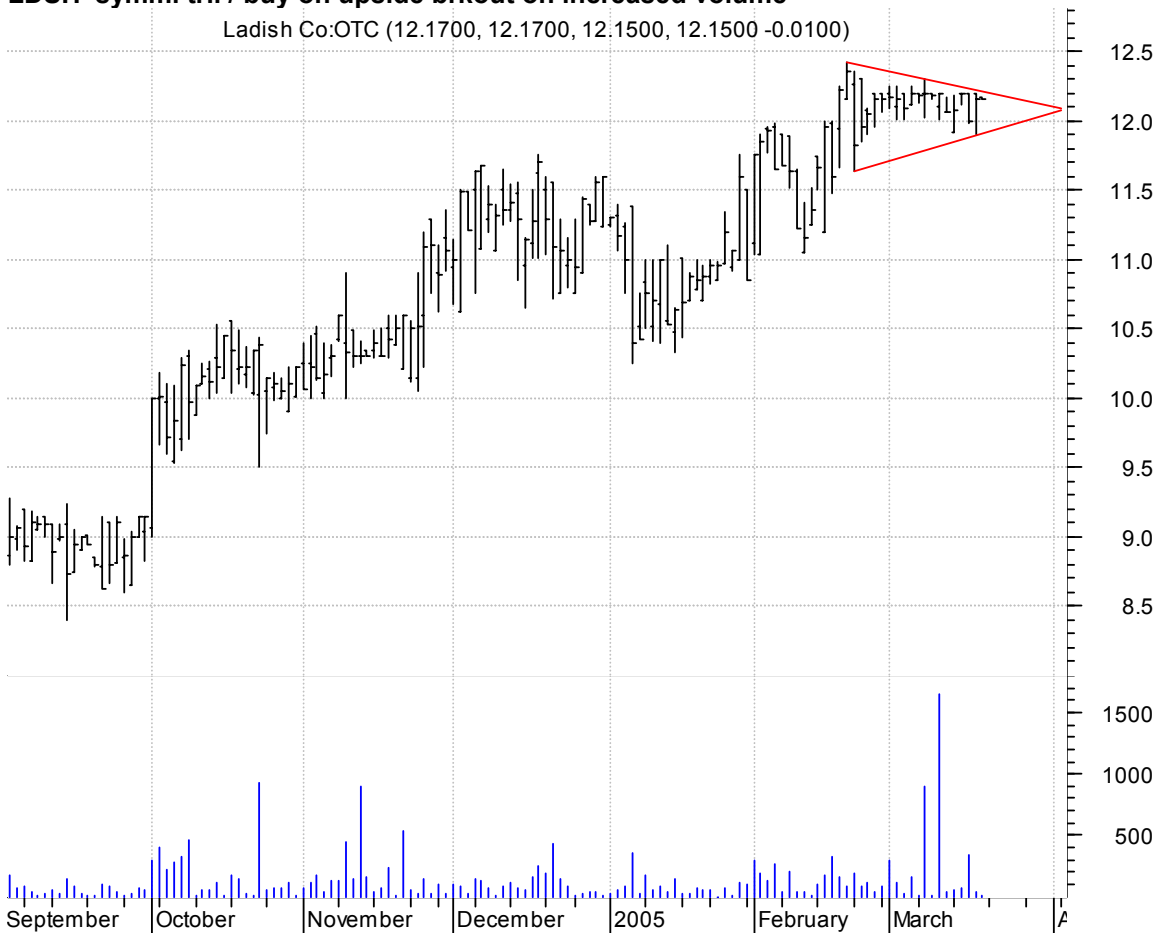
**JOYG symm. tri. / sell on downside brkout on increased volume**

Joy Global:OTC (36.2300, 36.8000, 35.8600, 36.3900 -0.2400)



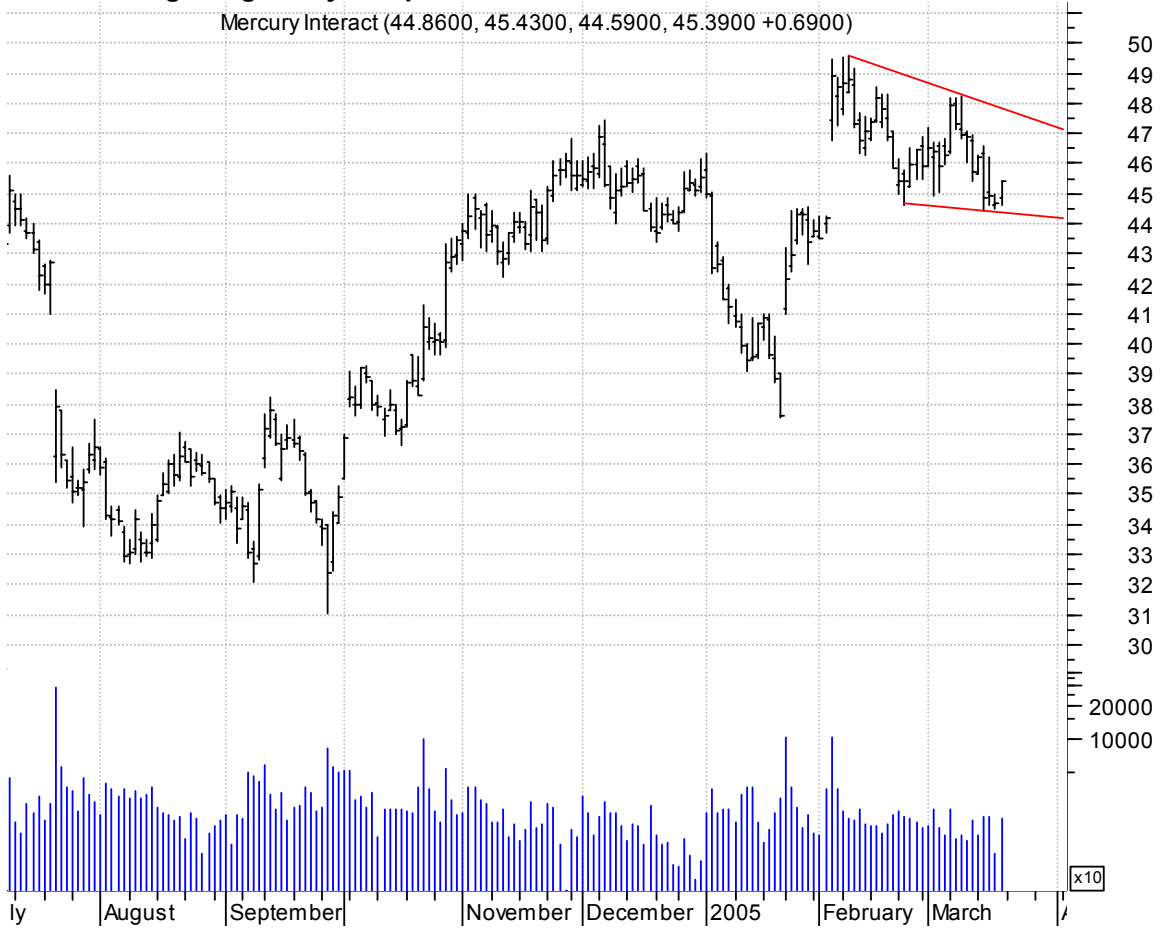
**LDSH symm. tri. / buy on upside brkout on increased volume**

Ladish Co:OTC (12.1700, 12.1700, 12.1500, 12.1500 -0.0100)



**MERQ falling wedge / buy on upside brkout on increased volume**

Mercury Interact (44.8600, 45.4300, 44.5900, 45.3900 +0.6900)



**MICU bullish flagging / buy on upside brkout on increased volume**

Vicuron Pharm.:OT (17.0100, 17.2500, 16.8300, 17.2500 +0.1200)



**NUT symm. tri. / buy on upside brkout on increased volume**

ML Macademia Or (6.1200, 6.1900, 6.0600, 6.1500 +0.0300)



**OPTN symm. tri. / buy on upside brkout on increased volume**

Option Care:OTC (19.8500, 20.0000, 19.6800, 19.9200 +0.1100)



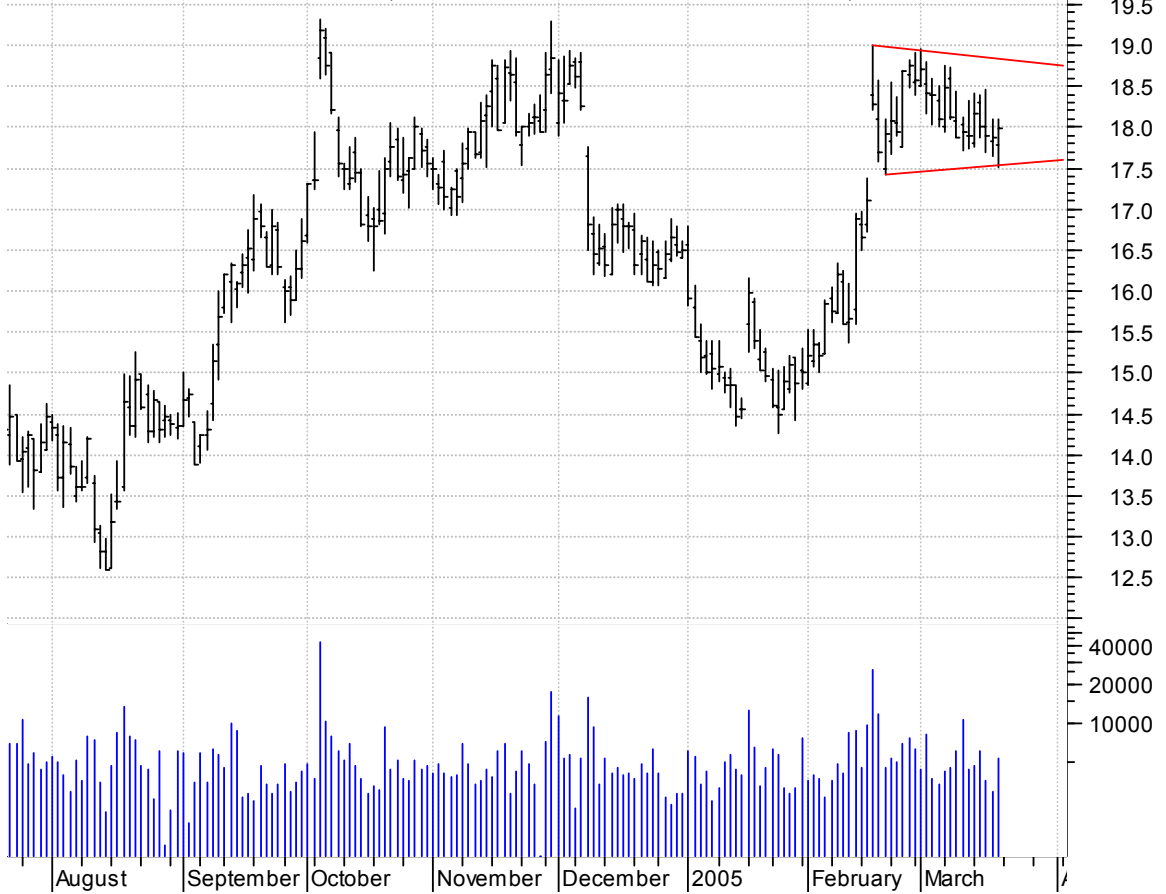
**OSG symm. tri. preceded by 'pole-like' move / buy on upside brkout on increased volume**

Overseas Shiphld (64.7000, 64.7000, 62.8200, 63.2800 -1.0700)

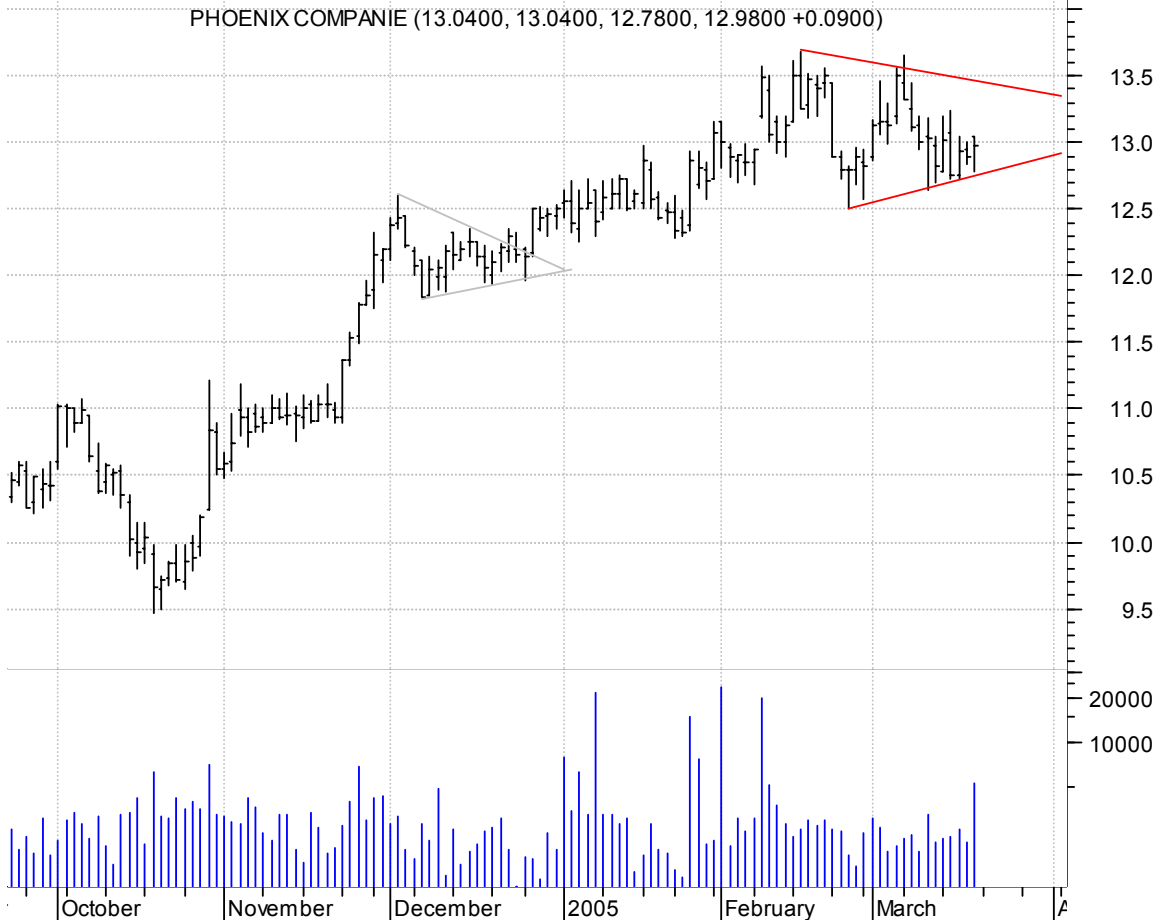


**PLAB symm. tri. preceded by 'pole-like' move / buy on upside brkout on increased volume**

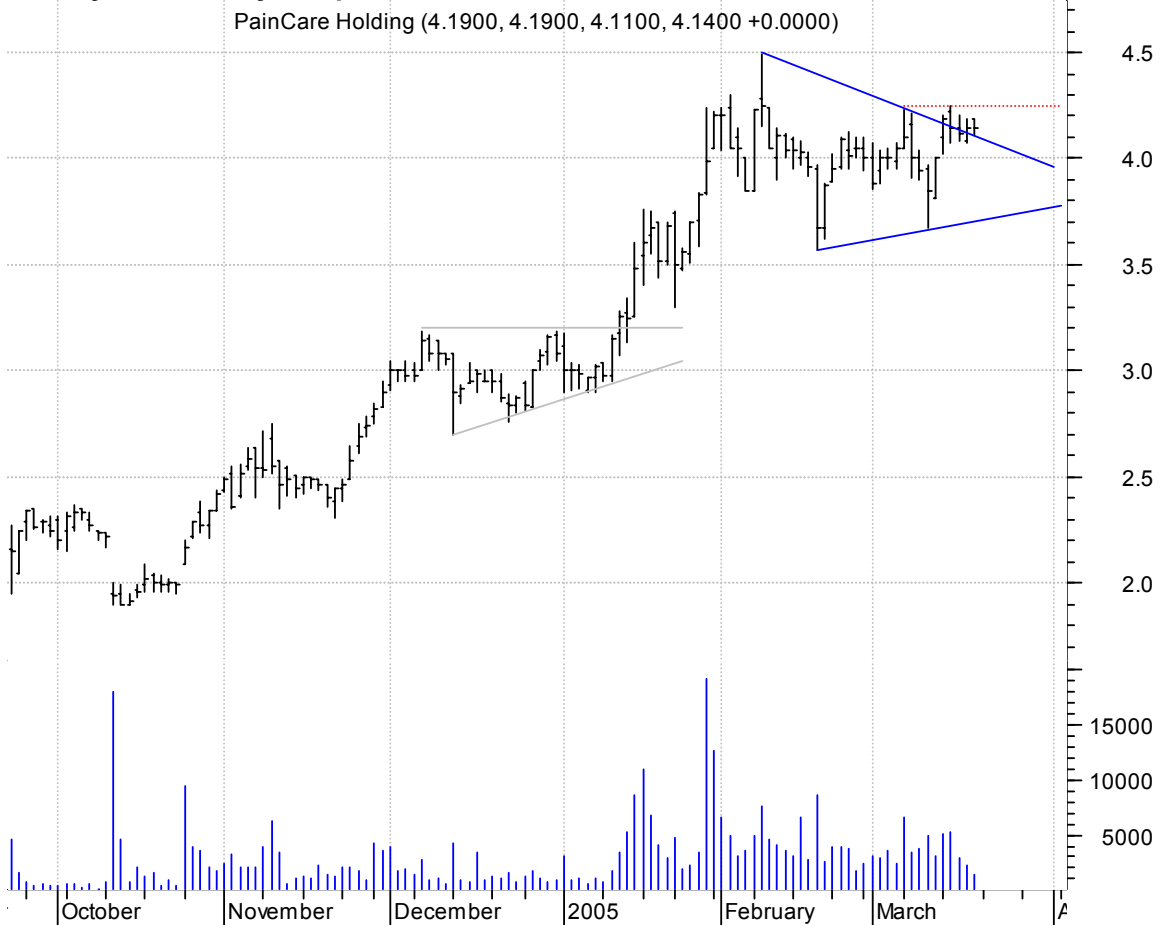
Photronics Inc (17.7900, 18.0900, 17.5100, 17.9800 +0.1100)



**PNX sloppy symm. tri. / buy on upside breakout on larger than normal volume**



**PRZ symm. tri. / buy on upside breakout thru dotted red line on increased volume**



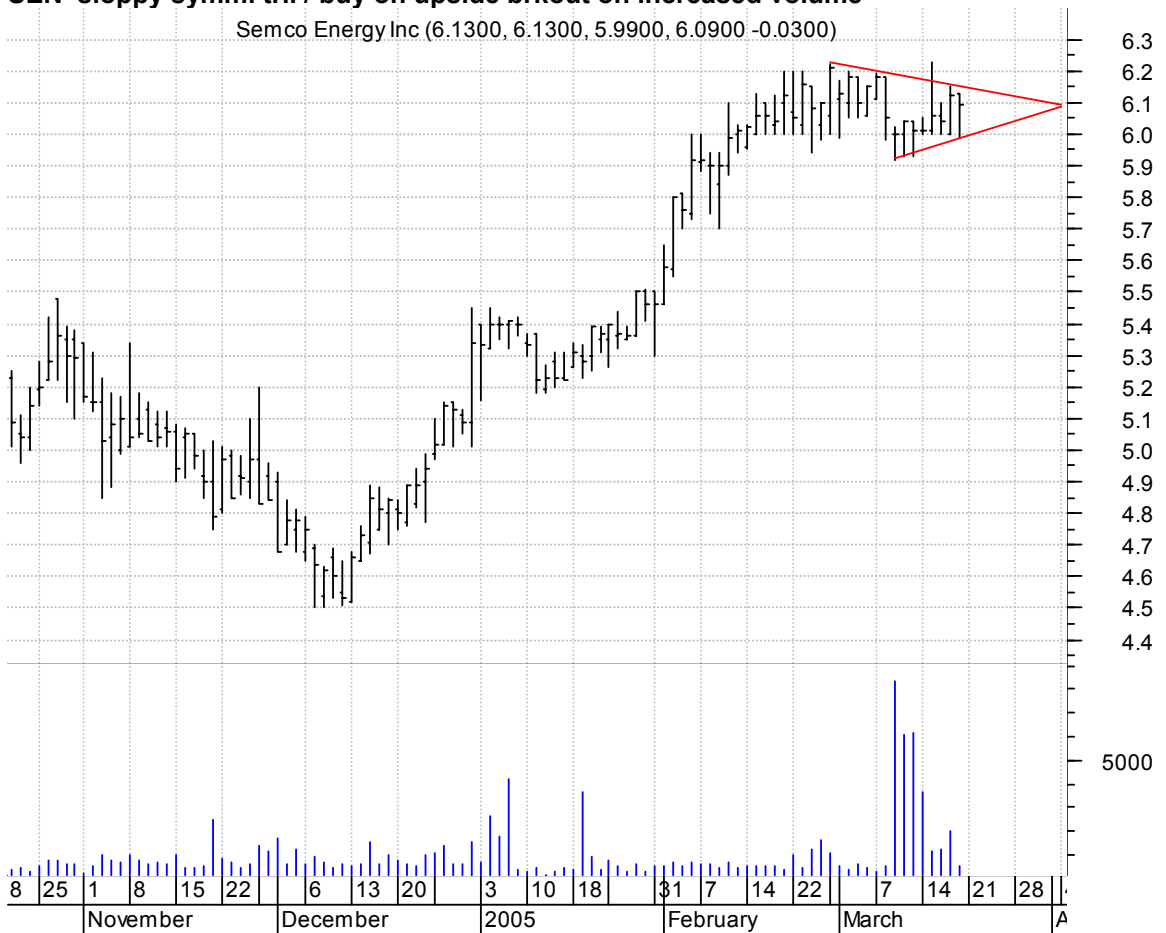
**PVH sloppy symm. tri. / buy on upside breakout on increased volume**

Phillips-Van Heu (27.6500, 28.0500, 27.6500, 27.9500 -0.0500)



**SEN sloppy symm. tri. / buy on upside breakout on increased volume**

Semco Energy Inc (6.1300, 6.1300, 5.9900, 6.0900 -0.0300)



**SKYF symm. tri. / buy on upside brkout on increased volume**

Sky Financial Gr (27.9500, 28.0400, 27.8400, 27.9300 -0.1200)



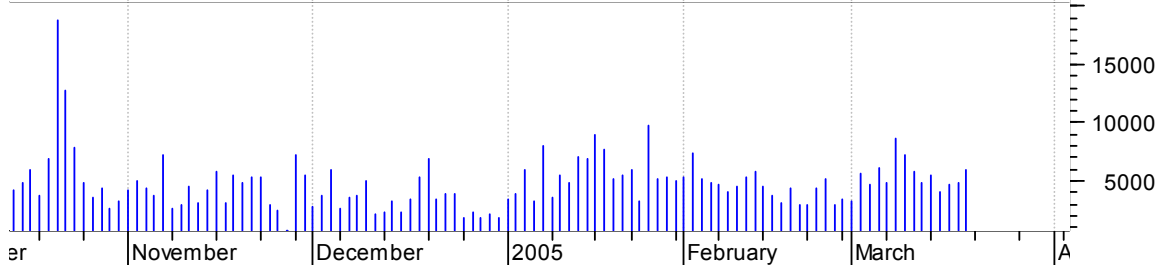
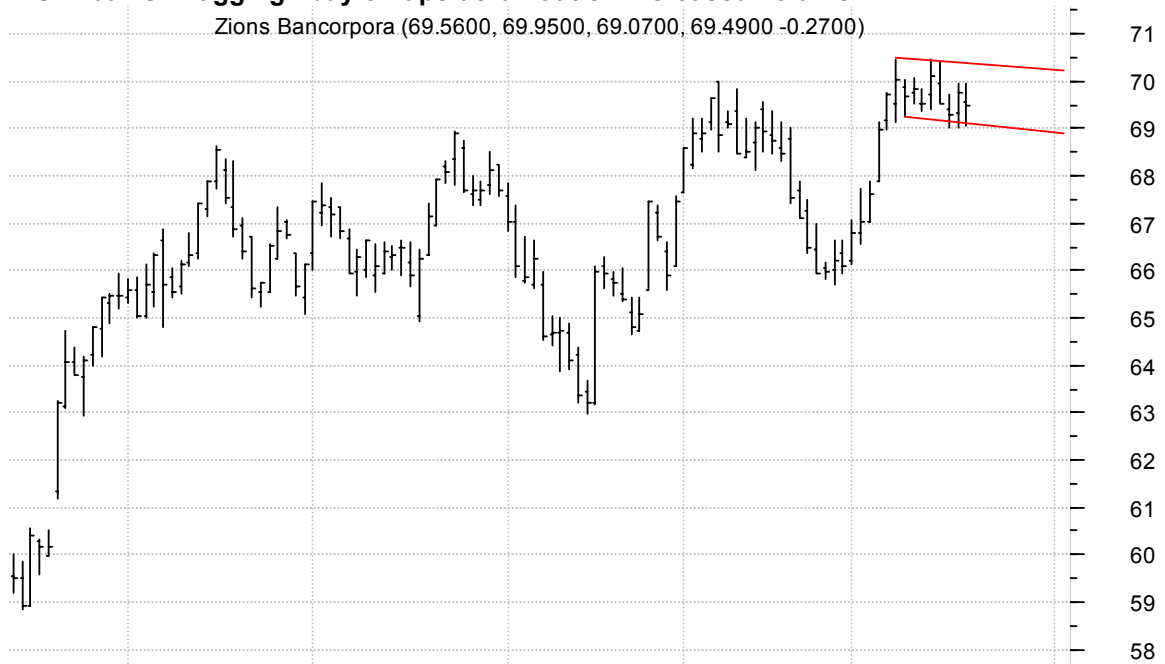
**XTO bullish flagging / buy on upside brkout on increased volume**

XTO Energy Inc:N (33.5000, 34.0500, 33.4100, 33.9000 +0.5000)



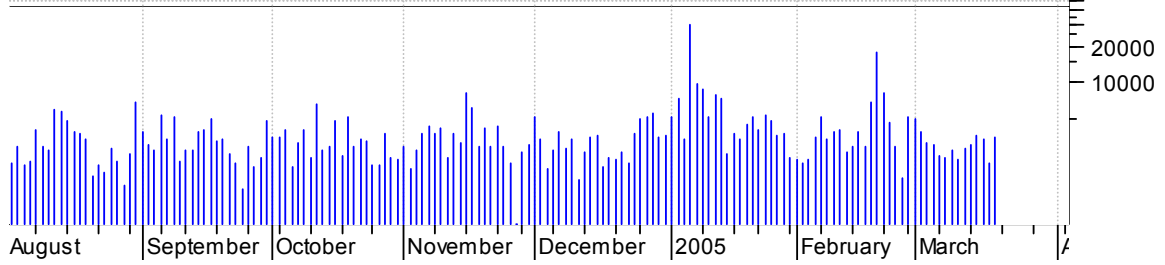
**ZION bullish flagging / buy on upside breakout on increased volume**

Zions Bancorpora (69.5600, 69.9500, 69.0700, 69.4900 -0.2700)



**ZLC falling wedge preceded by 'pole-like' move / buy on upside breakout on increased volume**

Zale Corp:NYSE (30.1500, 30.2000, 29.4600, 29.5400 -0.3700)





**chartpatterns.com**  
Chart Pattern Analysis for Timing the Markets

[KMatras@aol.com](mailto:KMatras@aol.com)